



MIDWEST WIRELINE

MICRORESISTIVITY

Company Satchell Creek Petroleum, LLC

Well Bellerive A #2-29

Field

County Graham

State Kansas

Location:

API #: 15-065-24284-00-00

Other Services

NE SE NW  
745 FNL & 1327 FEL

SEC 29 TWP 10S RGE 25W

CNL/CDL  
DIL

Permanent Datum Ground Level Elevation 2522  
Log Measured From Kelly Bushing  
Drilling Measured From Kelly Bushing

Elevation  
K.B. 2529  
D.F.  
G.L. 2522

Date	10/10/2023	
Run Number	One	
Depth Driller	4100	
Depth Logger	4101	
Bottom Logged Interval	4100	
Top Log Interval	200	
Casing Driller	8:625 @ 222	
Casing Logger	222	
Bit Size	7.875	
Type Fluid in Hole	Chemical	
Salinity, ppm CL	2000	
Density / Viscosity	9.3	56
pH / Fluid Loss	10.0	5.8
Source of Sample	Flowline	
Rm @ Meas. Temp	0.80 @	74
Rmt @ Meas. Temp	0.60 @	74
Rmc @ Meas. Temp	1.08 @	74
Source of Rmf / Rmc	Charts	
Rm @ BHT	0.51 @	117
Operating Rig Time	4 Hours	
Max Rec. Temp. F	117	
Equipment Number	P-24	
Location	Hays	
Recorded By	Justin Trout	
Witnessed By	Sean Deenihan	

<<< Fold Here >>>

All interpretations are opinions based on inferences from electrical or other measurements and Midwest Wireline LLC cannot and does not guarantee the accuracy or correctness of any interpretation, and Midwest Wireline LLC will not be liable or responsible for any loss, costs, damages, or expenses incurred or sustained by anyone resulting from any interpretation made by any of our officers, agents or employees.

Comments

N/A DENOTES NOT AVAILABLE OR NON-APPLICABLE.

St. Peter, Ks, S to Rd C  
2.25 W, S into

Log Measured From: Kelly Bushing 7 Ft. Above Permanent Datum

THANK YOU FOR USING MIDWEST WIRELINE LLC  
785-625-3858

Your Midwest Wireline Crew

Engineer: Justin Trout  
Operator:  
Operator:  
Operator:

This Log Record Was Witnessed By

Primary Witness: Sean Deenihan  
Secondary Witness:  
Secondary Witness:  
Secondary Witness:

Sensor	Offset (ft)	Schematic	Description	Length (ft)	O.D. (in)	Weight (lb)	
GR	40.75		GR-M&W (107)	3.00	3.50	50.00	
CNLSC CNSSC	37.65 36.90		CNT-M&W (207)	5.00	3.50	100.00	
				MWLith-STEP LITHO (704-10) Long Litho Mandrel	8.92	5.00	250.00
LCAL	28.21						
LLW8N	28.21						
LLW7N	28.21						
LLW6N	28.21						
LLW5N	28.21						
LLW4N	28.21						
LLW3N	28.21						
LLW2N	28.21			ML-PSIML (401)	7.58	4.00	65.00
LLW1N	28.21						
LSLOCK	27.96						
LLLOCK	27.96						
PELTMPR	27.96						
LSHVNG	27.96						
LLHVNG	27.96						
LSW8N	27.71						
LSW7N	27.71						
LSW6N	27.71						
LSW5N	27.71						
LSW4N	27.71						
LSW3N	27.71						
LSW2N	27.71						
LSW1N	27.71						
MCAL	19.58		DIL-M&W (507)	18.25	3.50	220.00	
MI	19.58						
MN	19.58						
RLL3F	15.50						
RLL3	15.50						
CILD	8.33						
CILM	4.50						
SP	0.20						

Dataset: satchell creek\_bellerive a #2-29.db: field/well/STKML/pass3.1  
 Total length: 42.75 ft  
 Total weight: 685.00 lb  
 O.D.: 5.00 in

# Log Variables

DatabaseC:\ProgramData\Warrior\Data\satchell creek\_bellerive a #2-29.db  
 Dataset field/well/STKML/pass3.1/\_vars\_

## Top - Bottom

BOREID in 7.875	BOTTEMP degF 117	CASEOD in 5.5	CASETHCK in 0	FLUIDDEN g/cc 1	MATRXDEN g/cc 2.71	NPORSEL Limestone	PERFS No
SNDERR mmho/m 0	SNDERRM mmho/m -5	SPSHIFT mV 158	SRFTEMP degF 74	SZCOR Off	TDEPTH ft 4101		

## Variable Description

BOREID : Borehole I.D.  
 BOTTEMP : Bottom Hole Temperature  
 CASEOD : Casing O.D.  
 CASETHCK : Casing Thickness  
 FLUIDDEN : Fluid Density  
 MATRXDEN : Matrix Density  
 NPORSEL : Neutron Porosity Curve Select

PERFS : Perforation Flag  
 SNDERR : Deep Sonde Error Correction  
 SNDERRM : Medium Sonde Error Correction  
 SPSHIFT : S.P. Baseline Offset  
 SRFTEMP : Surface Temperature  
 SZCOR : CN Size Cor. ?  
 TDEPTH : Total Depth



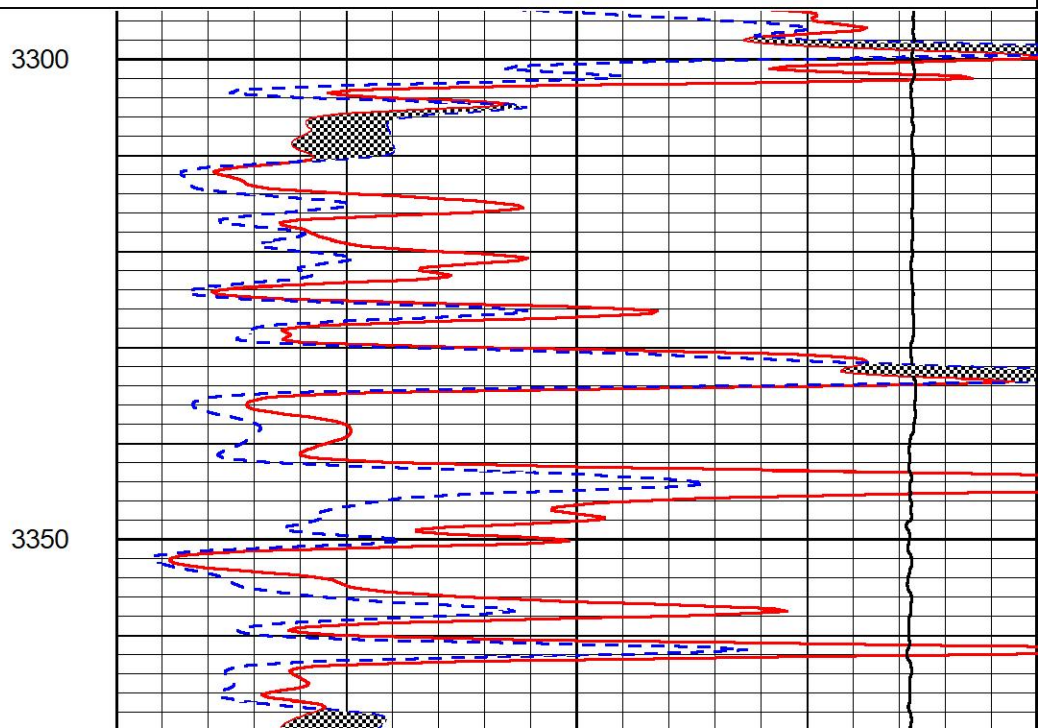
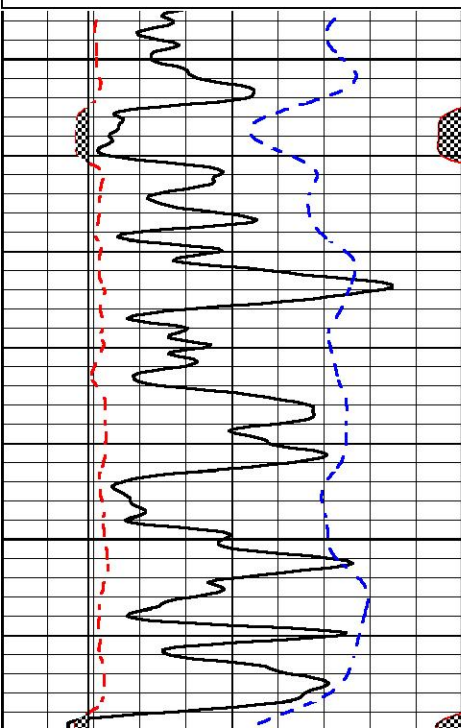
## DETAIL SECTION

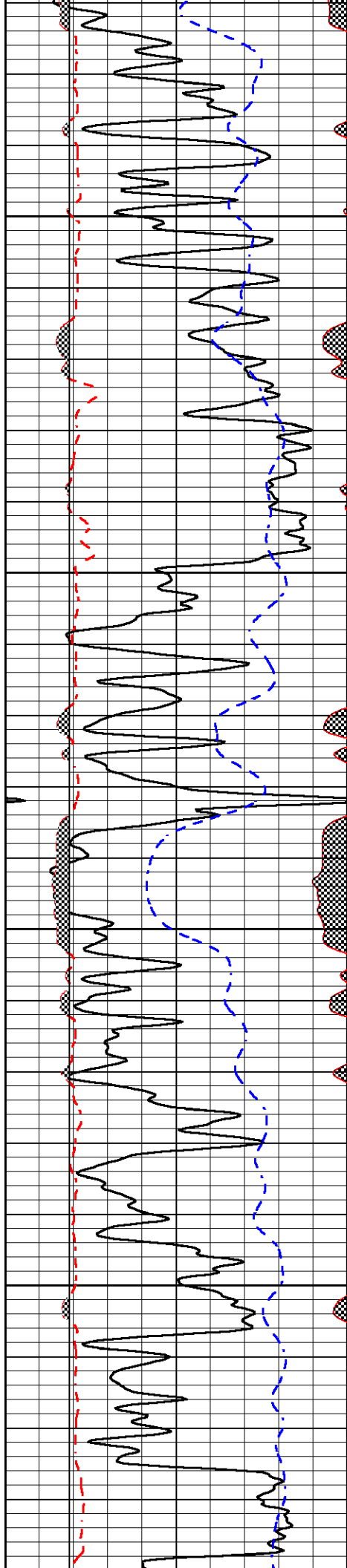
### MAIN PASS

Database File satchell creek\_bellerive a #2-29.db  
 Dataset Pathname STKML/pass3.1  
 Presentation Format \_micro  
 Dataset Creation Tue Oct 10 17:48:18 2023  
 Charted by Depth in Feet scaled 1:240

0	GR (GAPI)	150
6	Caliper (in)	16
2.875	mcal (in)	7.875
-200	sp (mV)	0

0	Micro Inverse 1 X 1 (Ohm-m)	40
0	Micro Normal 2" (Ohm-m)	40
10000	Line Weight (lb)	0



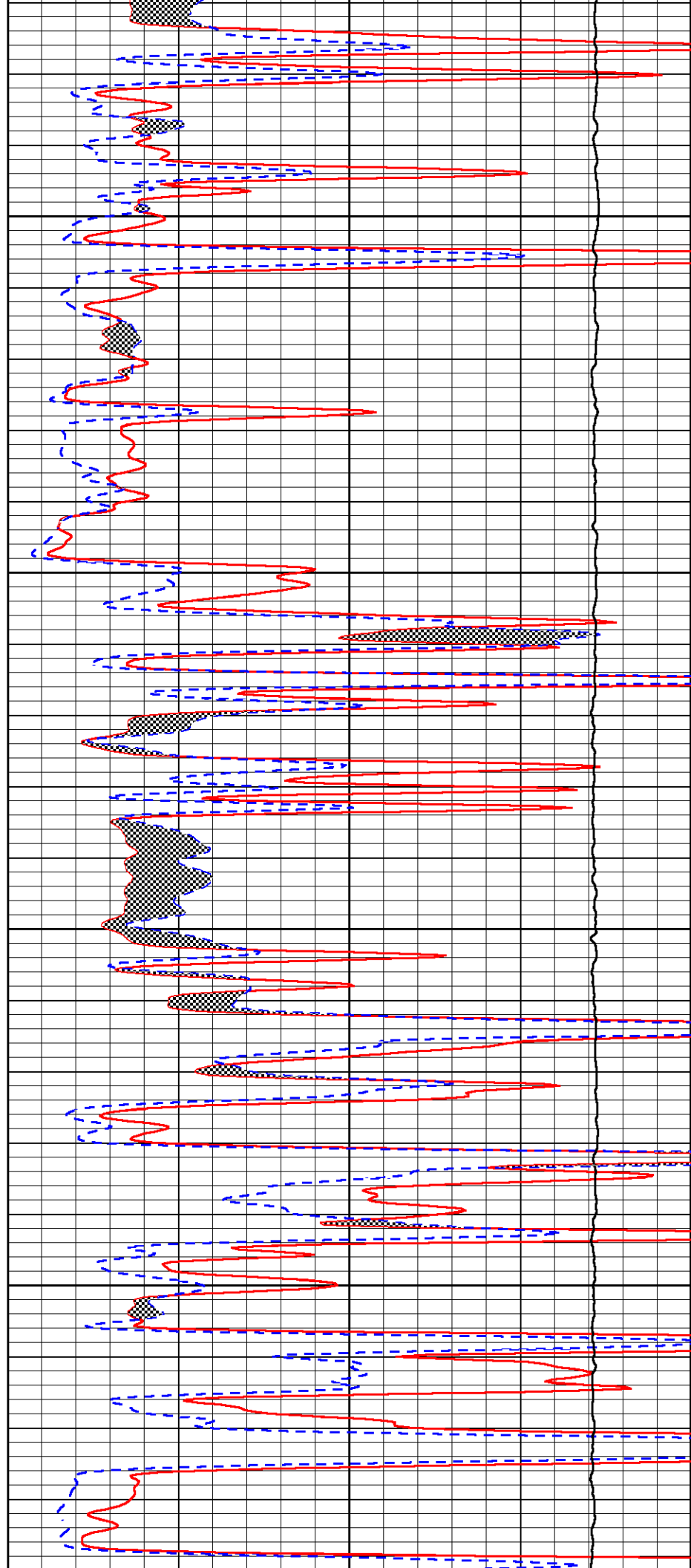


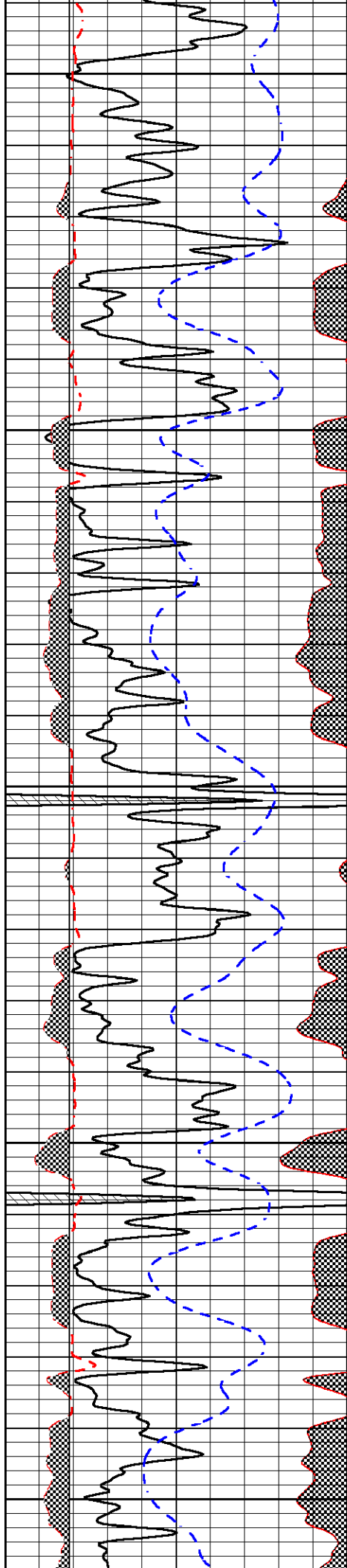
3400

3450

3500

3550





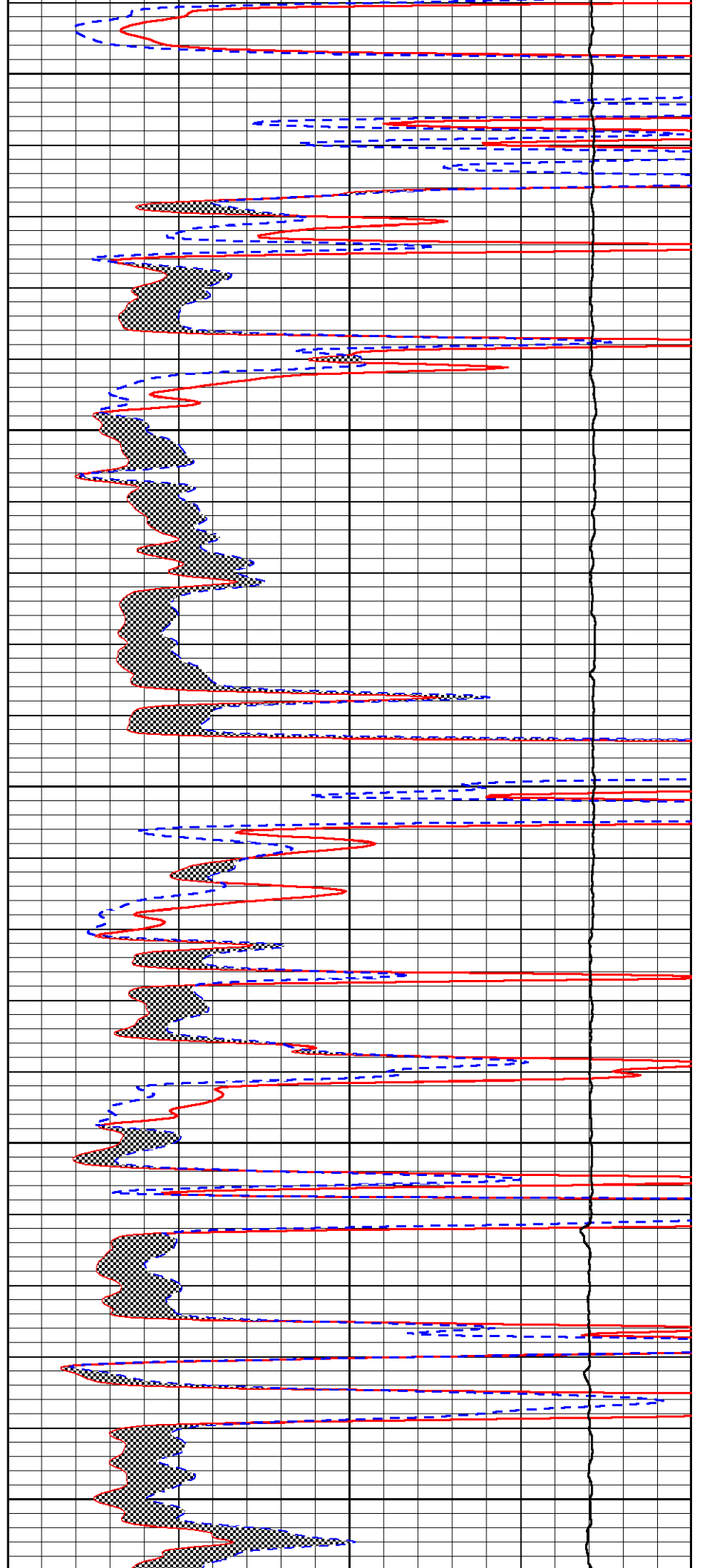
3600

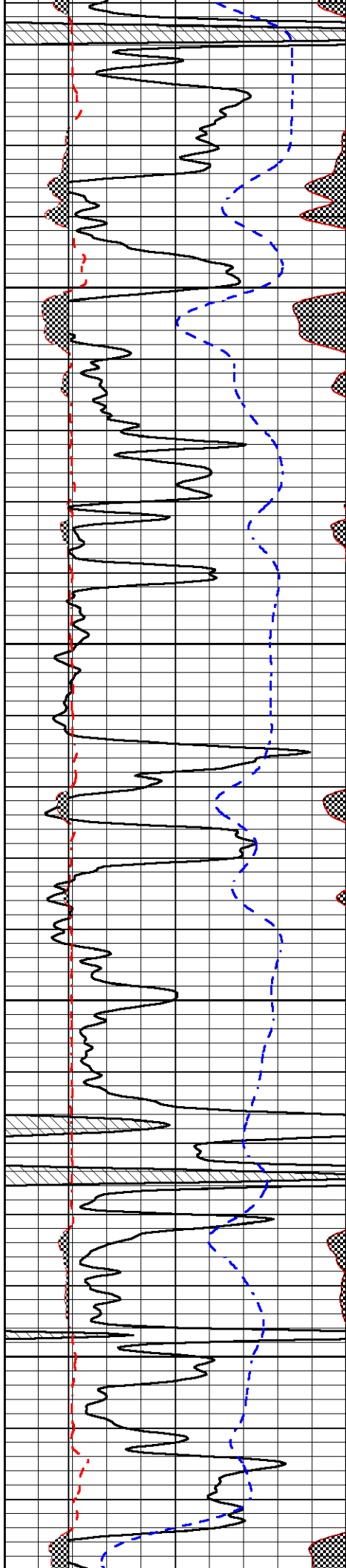
3650

3700

3750

3800



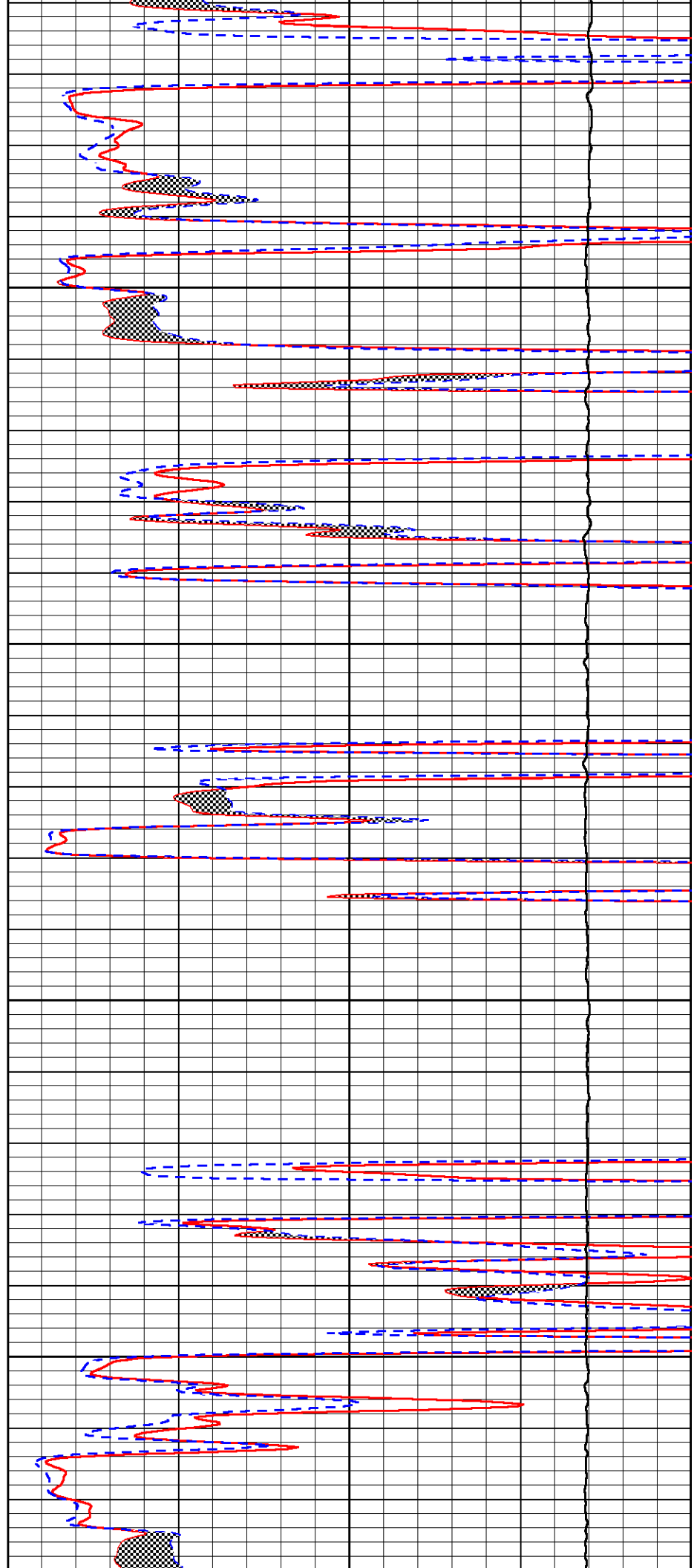


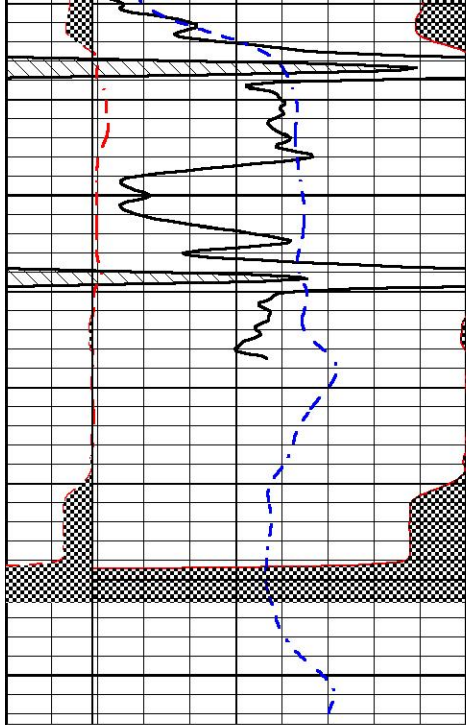
3850

3900

3950

4000

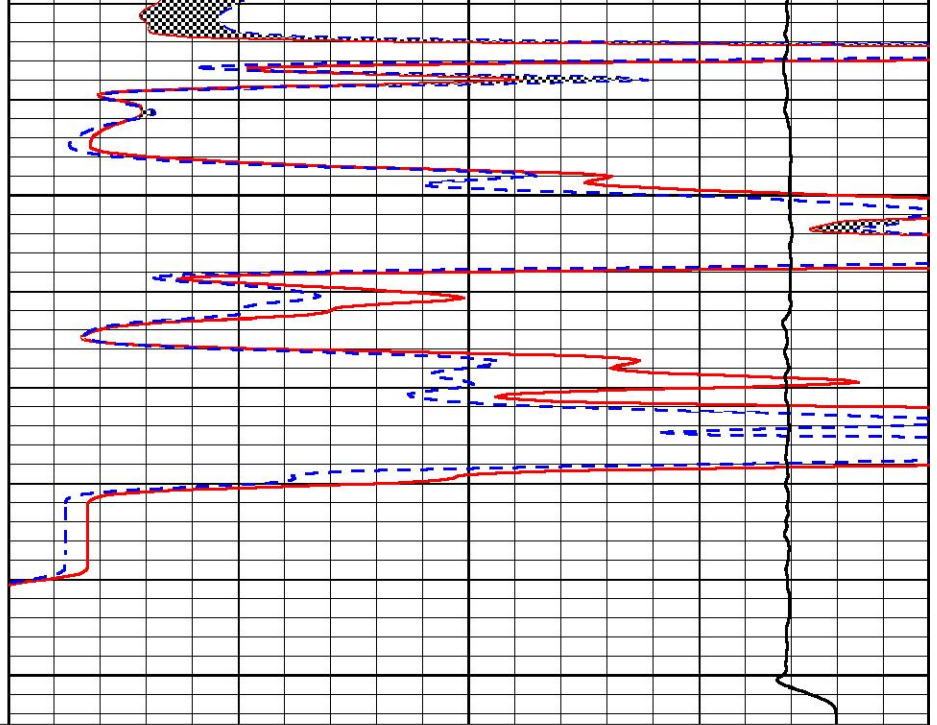




0	GR (GAPI)	150
6	Caliper (in)	16
2.875	mcal (in)	7.875
-200	sp (mV)	0

4050

4100



0	Micro Inverse 1 X 1 (Ohm-m)	40
0	Micro Normal 2" (Ohm-m)	40
10000	Line Weight (lb)	0



MIDWEST WIRELINE

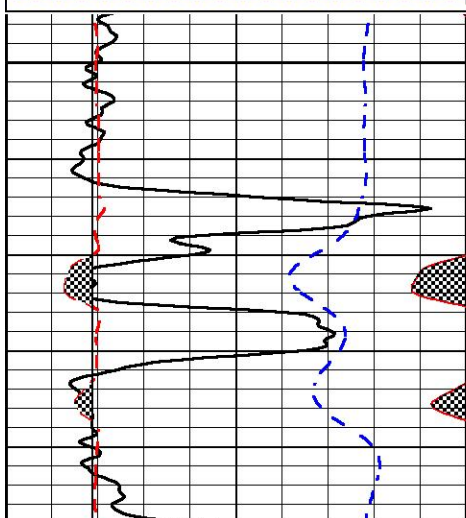
## REPEAT SECTION

### REPEAT PASS

Database File satchell creek\_bellerive a #2-29.db  
 Dataset Pathname STKML/pass2.1  
 Presentation Format \_micro  
 Dataset Creation Tue Oct 10 17:20:55 2023  
 Charted by Depth in Feet scaled 1:240

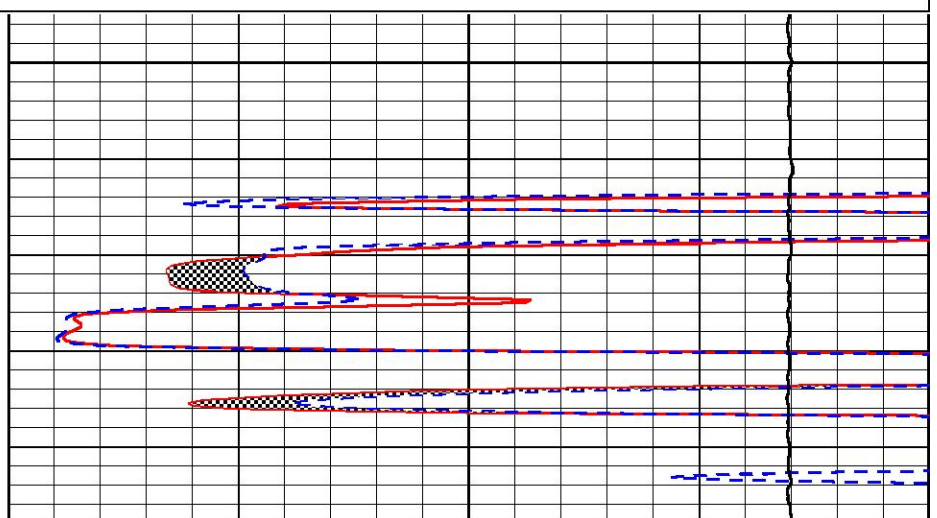
0	GR (GAPI)	150
6	Caliper (in)	16
2.875	mcal (in)	7.875
-200	sp (mV)	0

0	Micro Inverse 1 X 1 (Ohm-m)	40
0	Micro Normal 2" (Ohm-m)	40
10000	Line Weight (lb)	0



3900

3950





Loop:	Air	Loop	Air	Loop		m	b
Deep	68.570	638.100	0.000	255.800	mmho/m	0.500	-37.000
Medium	184.288	716.191	0.000	255.800	mmho/m	0.450	-79.000

Microlog Calibration Report

Serial-Model: 401-PSIML  
 Performed: Mon Sep 25 22:02:56 2023

	Readings		References			Results	
	Zero	Cal	Zero	Cal		m	b
Normal	0.0000	1.0000	0.0000	1.0000	Ohm-m	21000.0000	-1.0000
Inverse	0.0000	1.0000	0.0000	1.0000	Ohm-m	21000.0000	-0.7500
Caliper	1.0052	1.0858	5.0000	16.5000	in	142.7190	-138.7800

LITHODENSITY Calibration Report

Serial Number: 704-10  
 Tool Model: STEP LITHO  
 Performed: Fri Jun 23 15:26:01 2023

Source:

	Win1	Win2	Win3	Win4	Win5	Win6	Win7	Win8	
Background:									
SS:	51	54	202	252	21	70	42	1	cps
LS:	85	96	363	462	53	147	97	3	cps
Aluminum:									
SS:	870	1018	2321	2004	37	71	43	2	cps
LS:	1057	1828	3315	1570	61	147	91	5	cps
Magnesium:									
SS:	1459	1669	3829	2914	42	70	46	3	cps
LS:	4526	7550	13047	4982	98	135	93	13	cps
Aluminum+Iron:									
SS:	553	719	1939	1750	37	72	45	2	cps
LS:	613	1297	2812	1404	60	146	96	4	cps
		Density			PE				
		Actual	Calibrated		Actual	Calibrated	Quality		
Background:									
SS:							0.245		
LS:							0.205		
Aluminum:									
SS:		2.6000	2.6000	g/cc			0.240		
LS:		2.6000	2.6000	g/cc			0.236		
Magnesium:									
SS:		1.6800	1.6800	g/cc	2.5700	2.5700	0.210		
LS:		1.6800	1.6800	g/cc	2.5700	2.5700	0.184		
Aluminum+Iron:									
SS:						6.1800	0.228		
LS:						6.1800	0.206		

Before Survey  
 Performed: Wed Feb 9 13:15:42 2022

SS:	0	0	0	0	0	0	0	0	cps
LS:	1370	1580	3705	3037	48	80	50	4	cps

After Survey  
 Performed: Wed Feb 9 13:16:02 2022

SS:	0	0	0	0	0	0	0	0	cps
LS:	1400	1600	3800	3100	60	100	70	6	cps

Caliper:	Reference:	Reading:
Small Ring:	6.0 in	0.2
Large Ring:	15.0 in	0.8
Gain:	16.161	
Offset:	1.230	

**Compensated Neutron Calibration Report**

Serial Number:	207
Tool Model:	M&W

**CALIBRATION**

Detector	Readings	Target	Normalization
Short Space	6240.00 cps	1000.00 cps	1.6025
Long Space	460.00 cps	1000.00 cps	1.9500

**PRE-SURVEY VERIFICATION**

	Detector	Readings	Measured	Target
1)	Short Space	cps		
	Long Space	cps	pu	pu
2)	Short Space	cps		
	Long Space	cps	pu	
3)	Short Space	cps		
	Long Space	cps	pu	

**POST-SURVEY VERIFICATION**

	Detector	Readings	Measured	Target
1)	Short Space	cps		
	Long Space	cps	pu	pu
2)	Short Space	cps		
	Long Space	cps	pu	pu
3)	Short Space	cps		
	Long Space	cps	pu	pu

**Gamma Ray Calibration Report**

Serial Number:	107	
Tool Model:	M&W	
Performed:	Fri Dec 3 15:10:46 2021	
Calibrator Value:	500.0	GAPI
Background Reading:	24.0	cps
Calibrator Reading:	637.0	cps
Sensitivity:	0.5500	GAPI/cps



**MIDWEST WIRELINE**

<b>Company</b>	Satchell Creek Petroleum, LLC
<b>Well</b>	Bellerive A #2-29
<b>Field</b>	
<b>County</b>	Graham
<b>State</b>	Kansas

