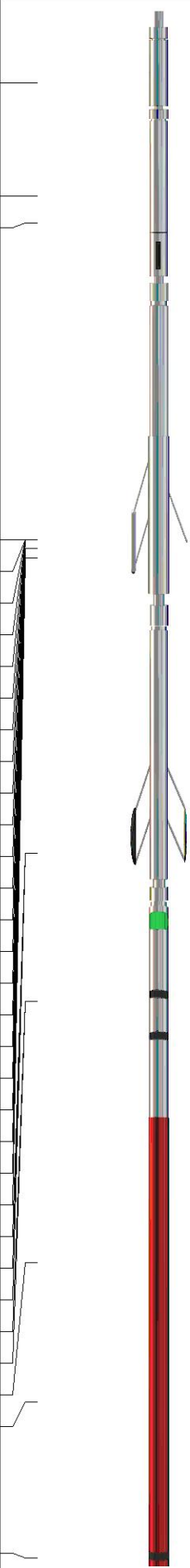


Sensor	Offset (ft)	Schematic	Description	Length (ft)	O.D. (in)	Weight (lb)	
GR	40.75		GR-M&W (107)	3.00	3.50	50.00	
CNLSC CNSSC	37.65 36.90		CNT-M&W (207)	5.00	3.50	100.00	
				MWLith-STEP LITHO (704-10) Long Litho Mandrel	8.92	5.00	250.00
LCAL	28.21						
LLW8N	28.21						
LLW7N	28.21						
LLW6N	28.21						
LLW5N	28.21						
LLW4N	28.21						
LLW3N	28.21						
LLW2N	28.21			ML-PSIML (401)	7.58	4.00	65.00
LLW1N	28.21						
LSLOCK	27.96						
LLLOCK	27.96						
PELTMPR	27.96						
LSHVNG	27.96						
LLHVNG	27.96						
LSW8N	27.71						
LSW7N	27.71						
LSW6N	27.71						
LSW5N	27.71						
LSW4N	27.71						
LSW3N	27.71						
LSW2N	27.71						
LSW1N	27.71						
MCAL	19.58		DIL-M&W (507)	18.25	3.50	220.00	
MI	19.58						
MN	19.58						
RLL3F	15.50						
RLL3	15.50						
CILD	8.33						
CILM	4.50						
SP	0.20						

Dataset: satchell creek_bellerive a #2-29.db: field/well/STKML/pass3.1
 Total length: 42.75 ft
 Total weight: 685.00 lb
 O.D.: 5.00 in

Log Variables

DatabaseC:\ProgramData\Warrrior\Data\satchell creek_bellerive a #2-29.db
 Dataset field/well/STKML/pass3.1/_vars_

Top - Bottom

BOREID in 7.875	BOTTEMP degF 117	CASEOD in 5.5	CASETHCK in 0	FLUIDDEN g/cc 1	MATRXDEN g/cc 2.71	NPORSEL Limestone	PERFS No
SNDERR mmho/m 0	SNDERRM mmho/m -5	SPSHIFT mV 158	SRFTEMP degF 74	SZCOR Off	TDEPTH ft 4101		

Variable Description

BOREID : Borehole I.D.
 BOTTEMP : Bottom Hole Temperature
 CASEOD : Casing O.D.
 CASETHCK : Casing Thickness
 FLUIDDEN : Fluid Density
 MATRXDEN : Matrix Density
 NPORSEL : Neutron Porosity Curve Select

PERFS : Perforation Flag
 SNDERR : Deep Sonde Error Correction
 SNDERRM : Medium Sonde Error Correction
 SPSHIFT : S.P. Baseline Offset
 SRFTEMP : Surface Temperature
 SZCOR : CN Size Cor. ?
 TDEPTH : Total Depth

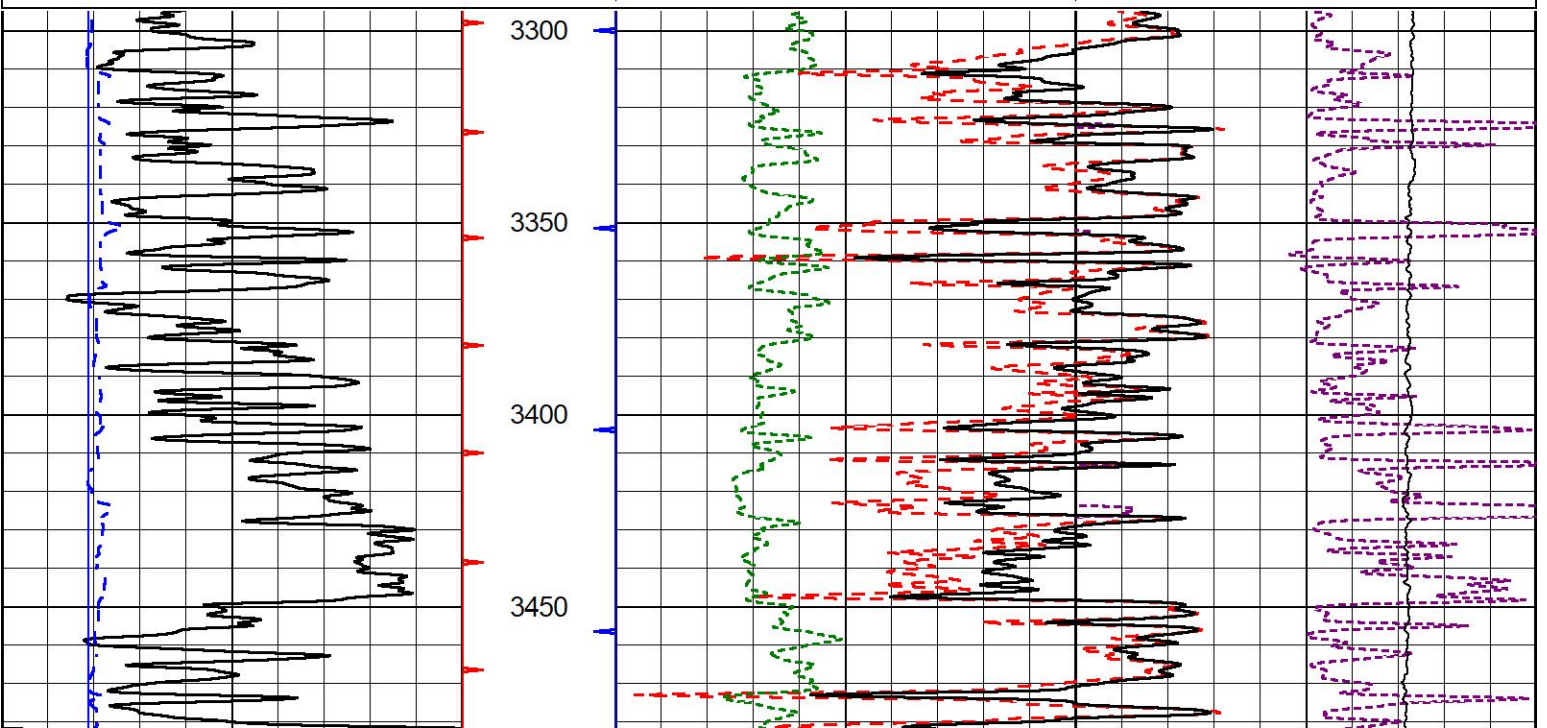


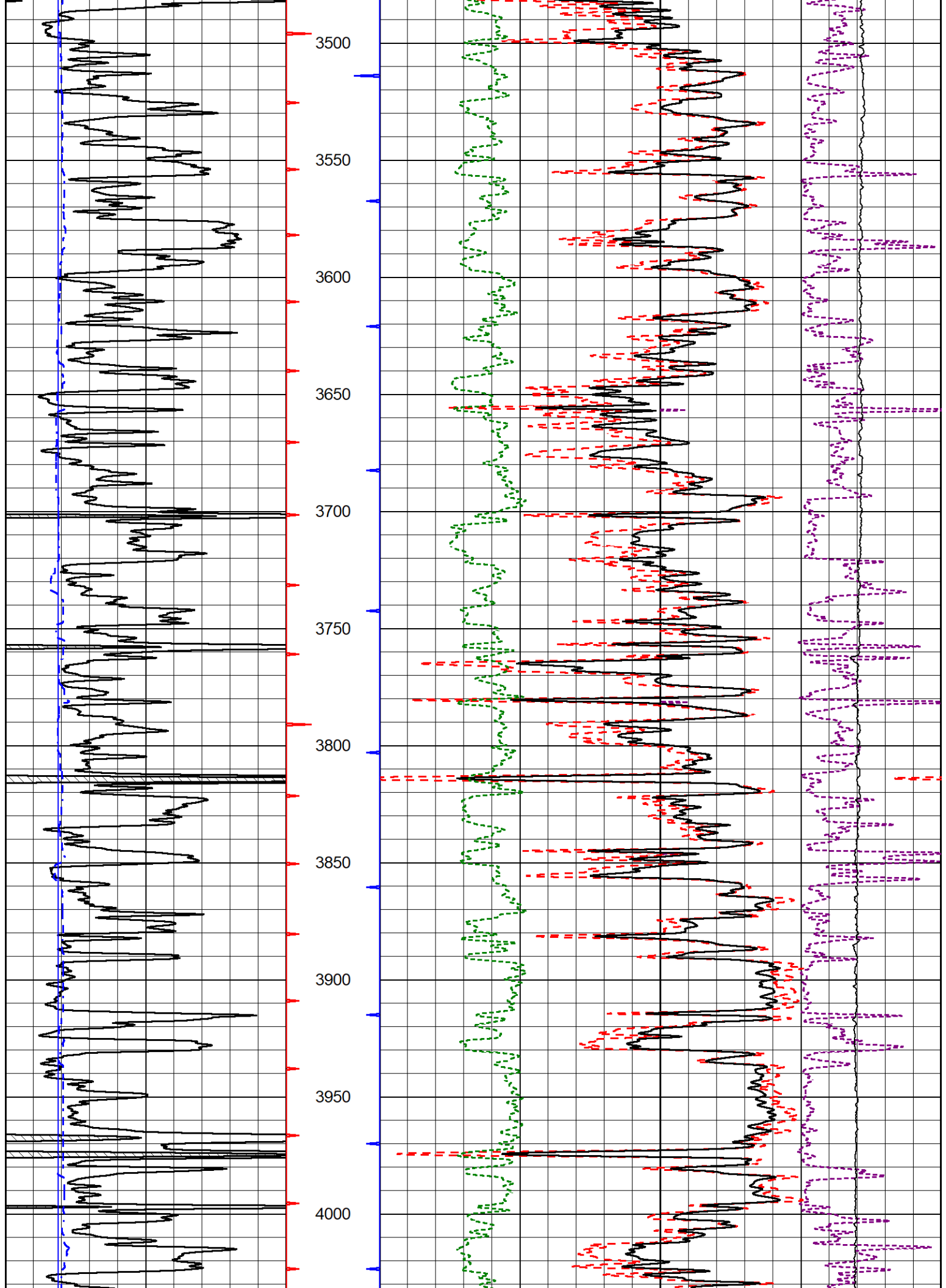
2" SCALE BULK DENSITY

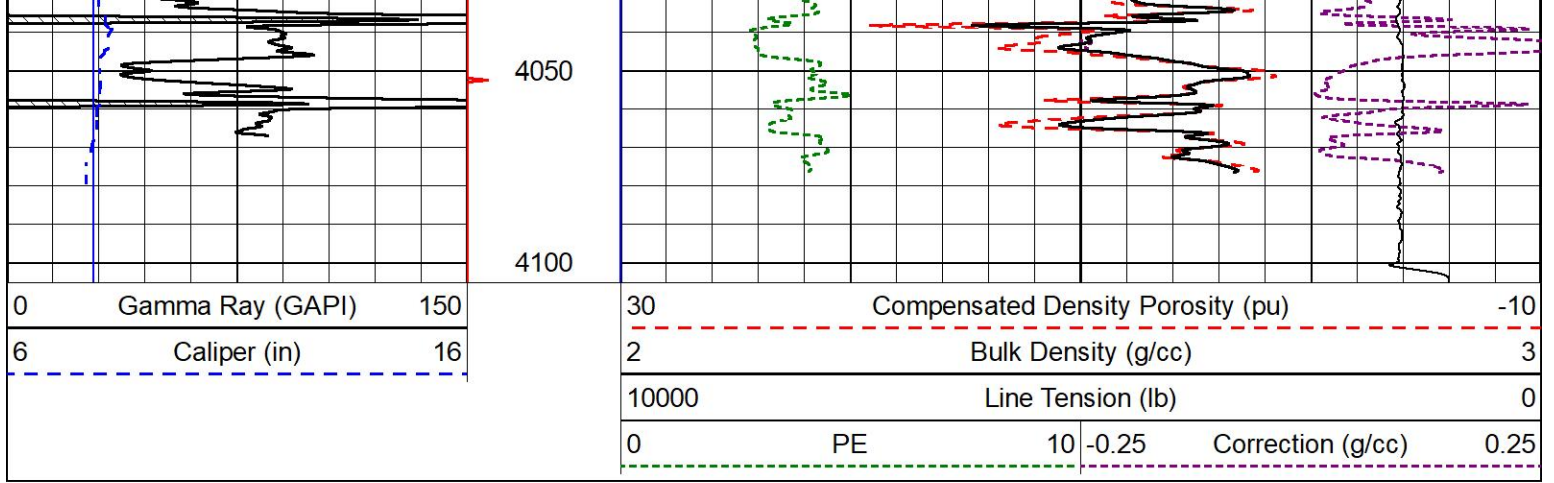
MAIN PASS

Database File satchell creek_bellerive a #2-29.db
 Dataset Pathname STKML/pass3.3
 Presentation Format _cdlpe
 Dataset Creation Tue Oct 10 17:13:00 2023
 Charted by Depth in Feet scaled 1:600

0	Gamma Ray (GAPI)	150	30	Compensated Density Porosity (pu)	-10
6	Caliper (in)	16	2	Bulk Density (g/cc)	3
			10000	Line Tension (lb)	0
			0	PE	10 -0.25
				Correction (g/cc)	0.25



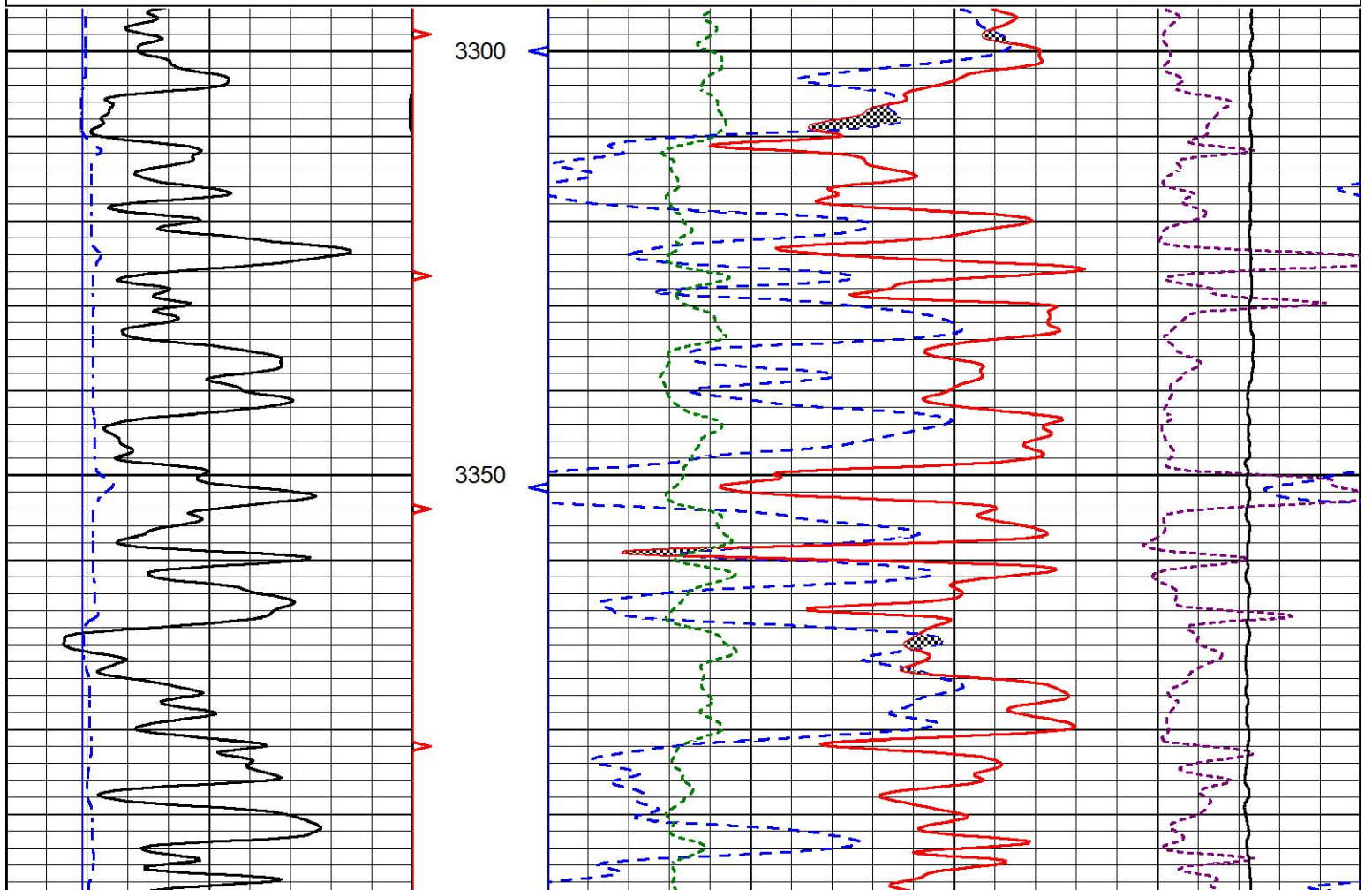
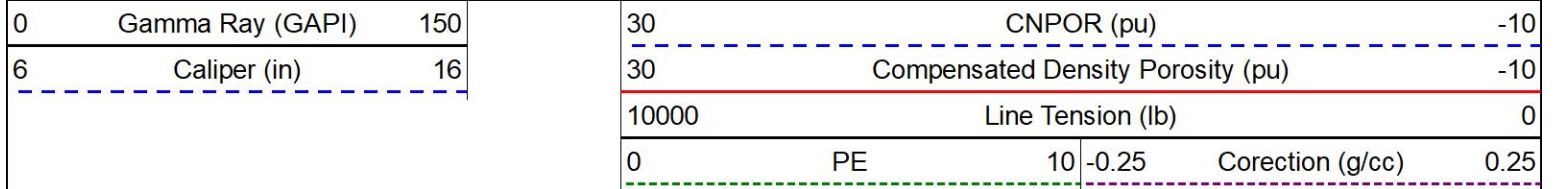


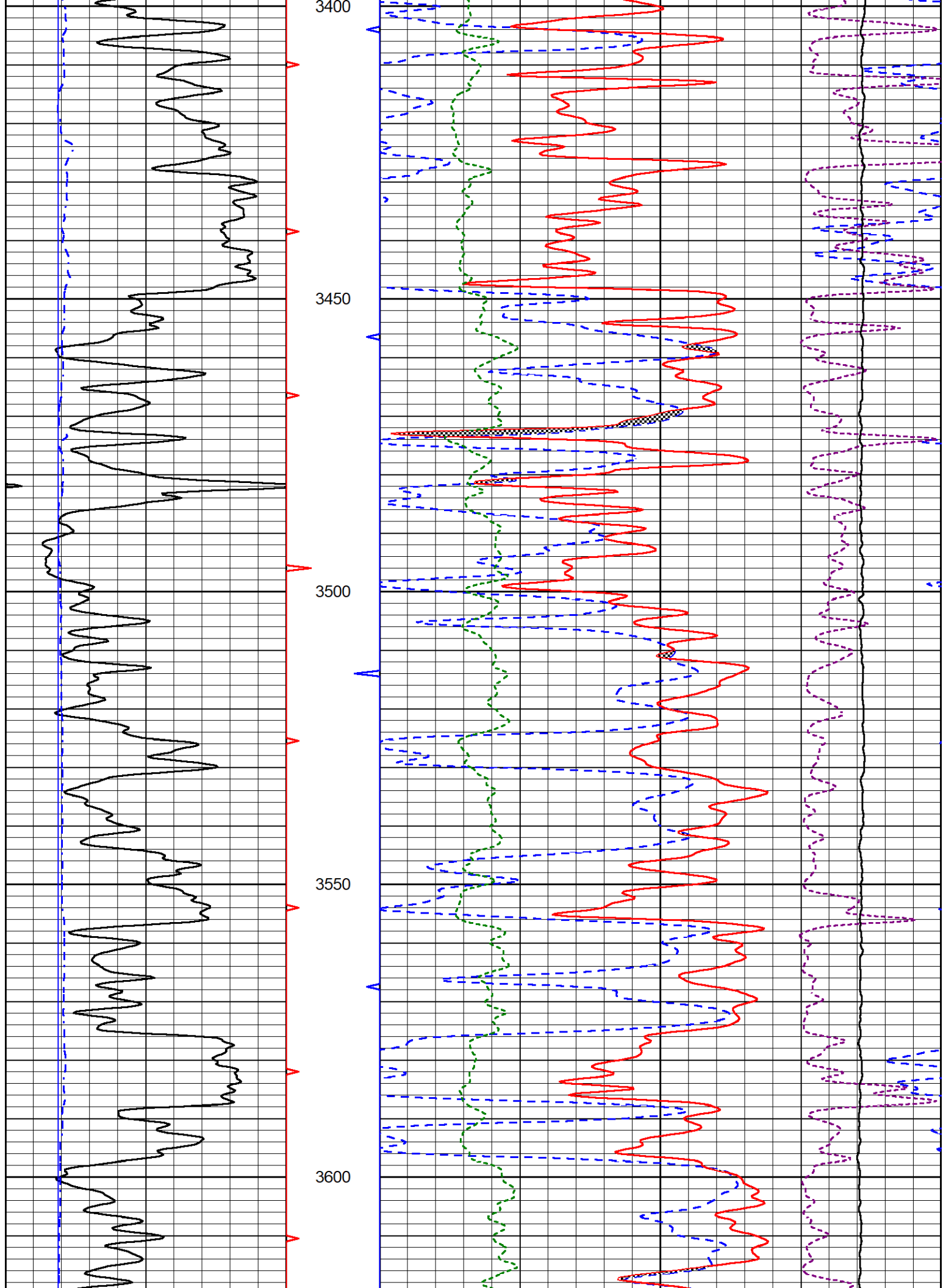


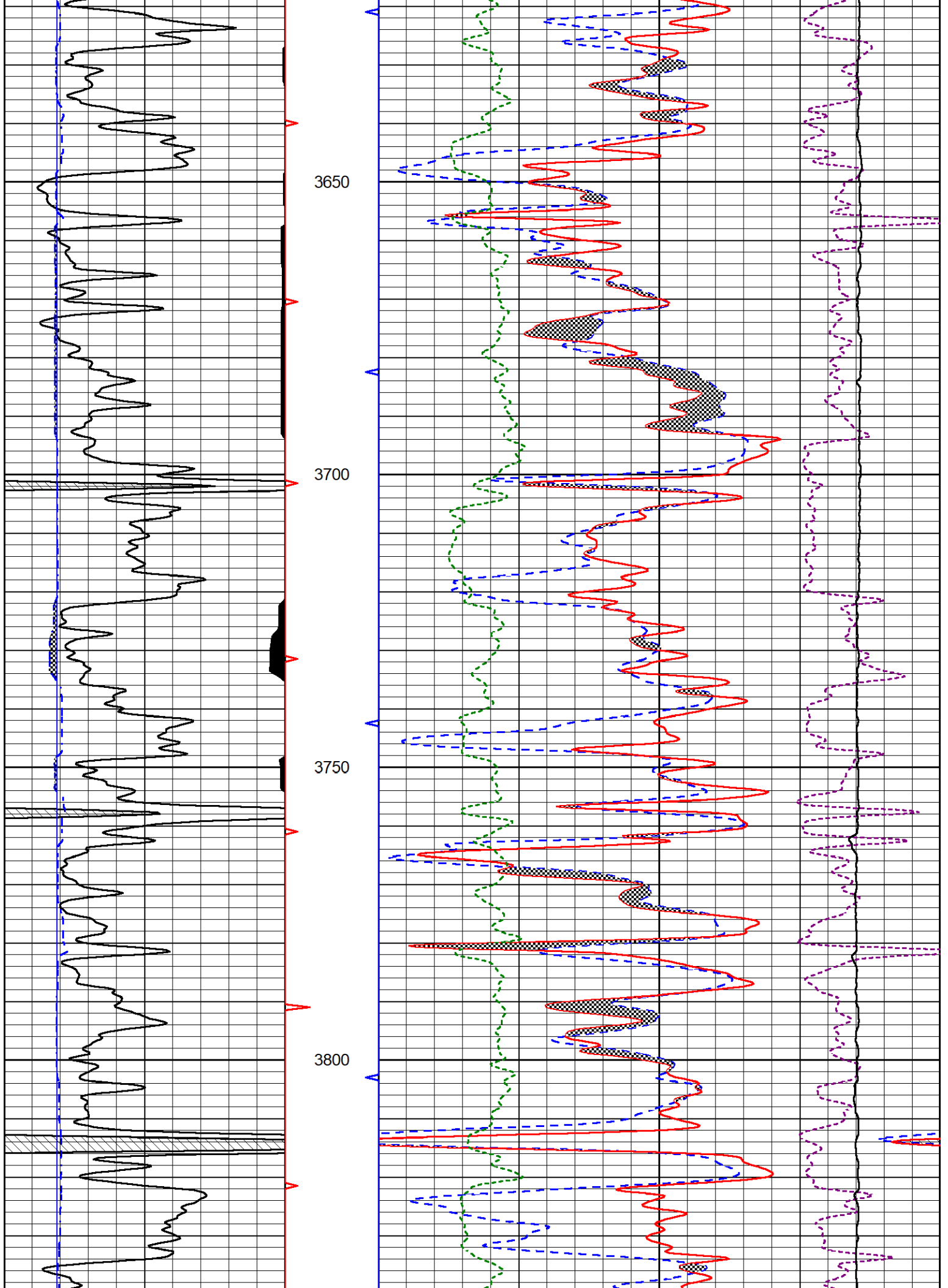
DETAIL SECTION

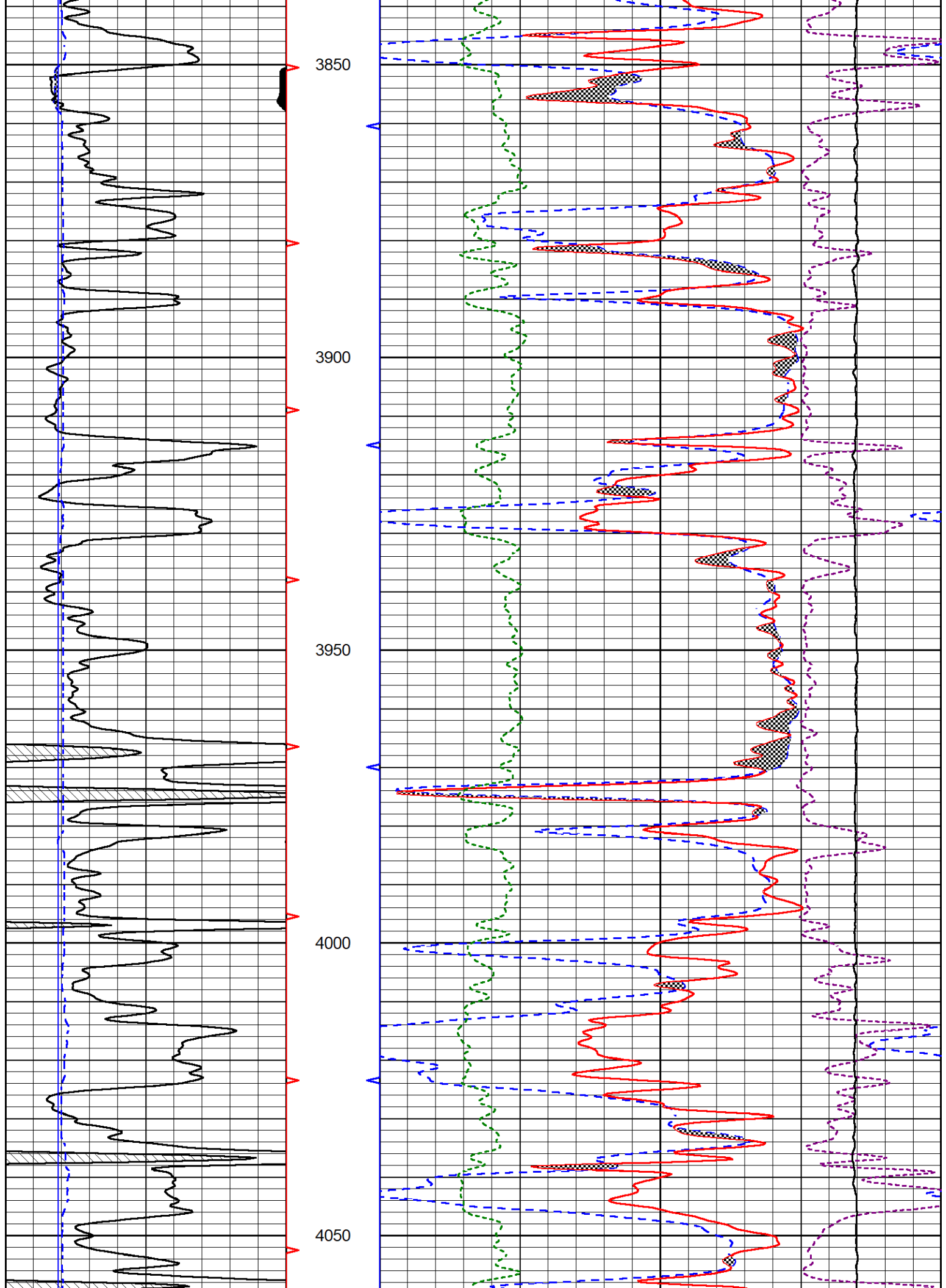
MAIN PASS

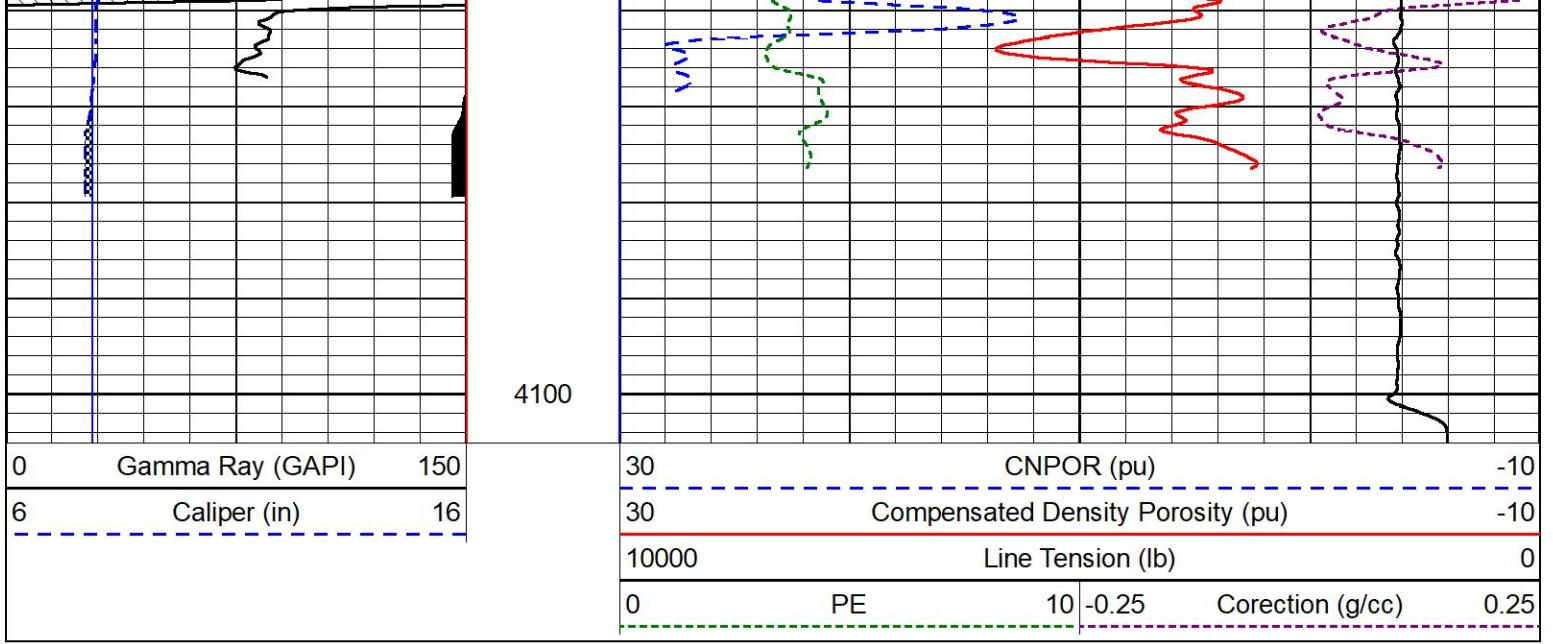
Database File satchell creek_bellerive a #2-29.db
 Dataset Pathname STKML/pass3.1
 Presentation Format _CNDLS~4
 Dataset Creation Tue Oct 10 17:48:18 2023
 Charted by Depth in Feet scaled 1:240









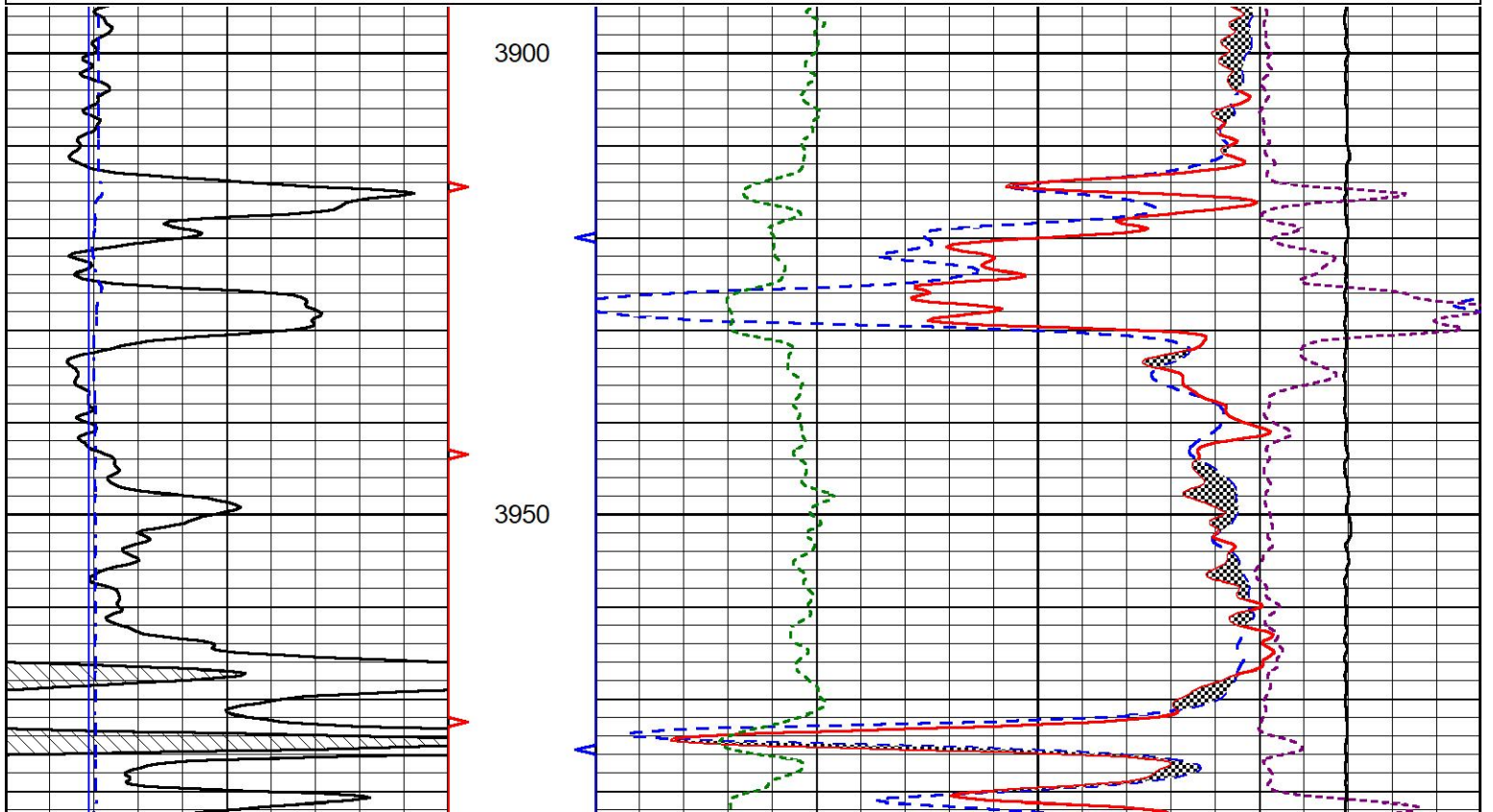
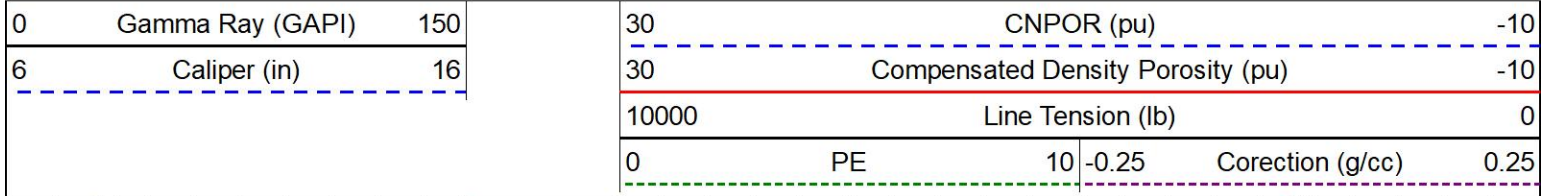


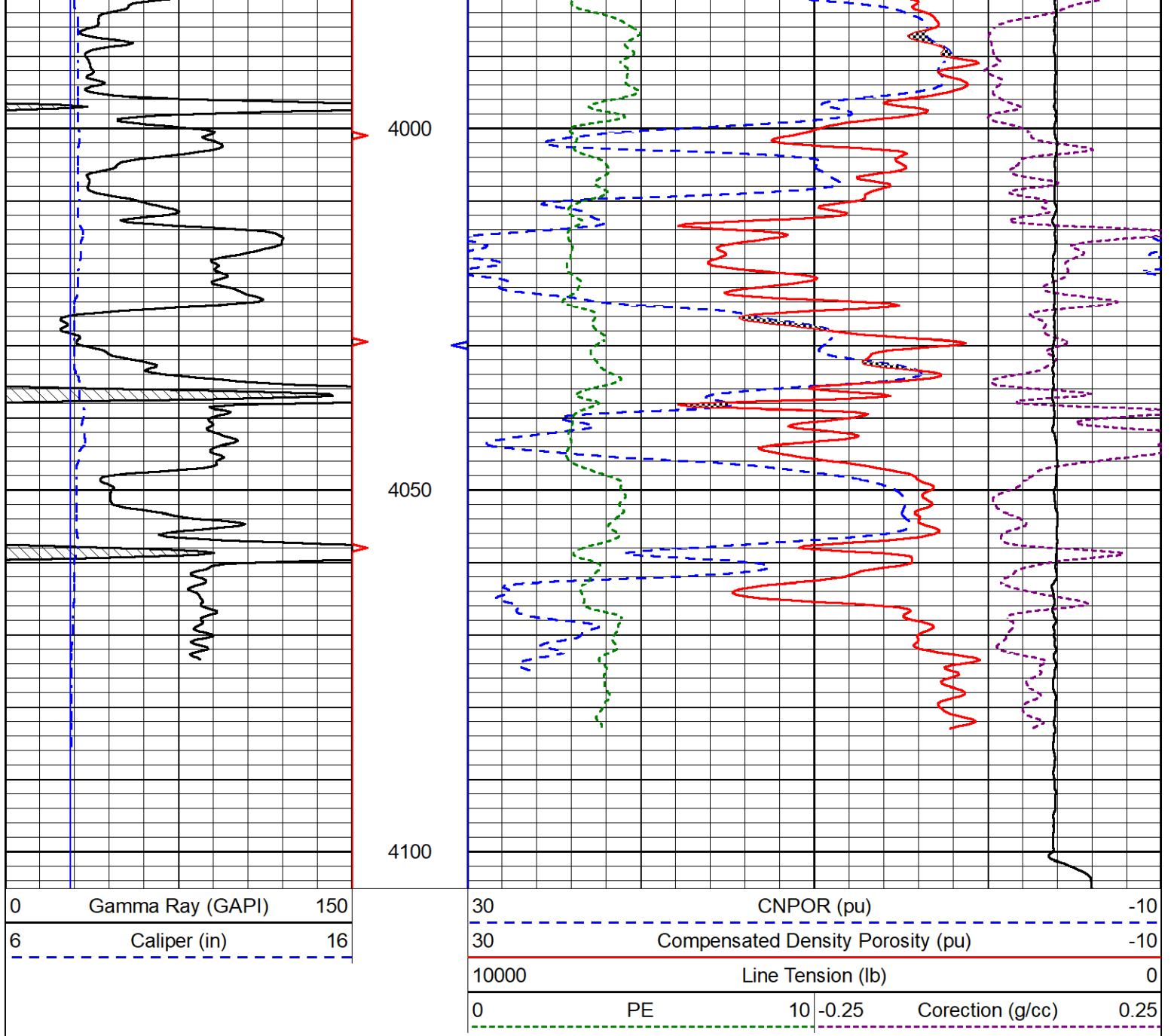
MIDWEST WIRELINE

REPEAT SECTION

REPEAT PASS

Database File satchell creek_bellerive a #2-29.db
 Dataset Pathname STKML/pass2.1
 Presentation Format _CNDLS~4
 Dataset Creation Tue Oct 10 17:20:55 2023
 Charted by Depth in Feet scaled 1:240





Calibration Report

Database File satchell creek_bellerive a #2-29.db
 Dataset Pathname STKML/pass3.1
 Dataset Creation Tue Oct 10 17:48:18 2023

Dual Induction Calibration Report

Serial-Model: 507-M&W
 Surface Cal Performed:

Loop:	Readings		References			Results	
	Air	Loop	Air	Loop		m	b
Deep	68.570	638.100	0.000	255.800	mmho/m	0.500	-37.000
Medium	184.288	716.191	0.000	255.800	mmho/m	0.450	-79.000

Microlog Calibration Report

Serial Model: 401 PSIMI

	Readings		References			Results	
	Zero	Cal	Zero	Cal		m	b
Normal	0.0000	1.0000	0.0000	1.0000	Ohm-m	21000.0000	-1.0000
Inverse	0.0000	1.0000	0.0000	1.0000	Ohm-m	21000.0000	-0.7500
Caliper	1.0052	1.0858	5.0000	16.5000	in	142.7190	-138.7800

LITHODENSITY Calibration Report

Serial Number: 704-10
 Tool Model: STEP LITHO
 Performed: Fri Jun 23 15:26:01 2023

Source:

	Win1	Win2	Win3	Win4	Win5	Win6	Win7	Win8	
Background:									
SS:	51	54	202	252	21	70	42	1	cps
LS:	85	96	363	462	53	147	97	3	cps
Aluminum:									
SS:	870	1018	2321	2004	37	71	43	2	cps
LS:	1057	1828	3315	1570	61	147	91	5	cps
Magnesium:									
SS:	1459	1669	3829	2914	42	70	46	3	cps
LS:	4526	7550	13047	4982	98	135	93	13	cps
Aluminum+Iron:									
SS:	553	719	1939	1750	37	72	45	2	cps
LS:	613	1297	2812	1404	60	146	96	4	cps

	Density Actual	Calibrated	PE Actual	Calibrated	Quality
Background:					
SS:					0.245
LS:					0.205
Aluminum:					
SS:	2.6000	2.6000	g/cc		0.240
LS:	2.6000	2.6000	g/cc		0.236
Magnesium:					
SS:	1.6800	1.6800	g/cc	2.5700	2.5700
LS:	1.6800	1.6800	g/cc	2.5700	2.5700
Aluminum+Iron:					
SS:				6.1800	0.228
LS:				6.1800	0.206

Before Survey									
Performed:	Wed Feb 9	13:15:42	2022						
SS:	0	0	0	0	0	0	0	0	cps
LS:	1370	1580	3705	3037	48	80	50	4	cps
After Survey									
Performed:	Wed Feb 9	13:16:02	2022						
SS:	0	0	0	0	0	0	0	0	cps
LS:	1400	1600	3800	3100	60	100	70	6	cps

Caliper:	Reference:	Reading:
Small Ring:	6.0 in	0.2
Large Ring:	15.0 in	0.8
Gain:	16.161	
Offset:	1.230	

Serial Number: 207
Tool Model: M&W

CALIBRATION

Detector	Readings	Target	Normalization
Short Space	6240.00 cps	1000.00 cps	1.6025
Long Space	460.00 cps	1000.00 cps	1.9500

PRE-SURVEY VERIFICATION

Detector	Readings	Measured	Target
1) Short Space	cps		
Long Space	cps	pu	pu
2) Short Space	cps		
Long Space	cps	pu	
3) Short Space	cps		
Long Space	cps	pu	

POST-SURVEY VERIFICATION

Detector	Readings	Measured	Target
1) Short Space	cps		
Long Space	cps	pu	pu
2) Short Space	cps		
Long Space	cps	pu	pu
3) Short Space	cps		
Long Space	cps	pu	pu

Gamma Ray Calibration Report

Serial Number: 107
Tool Model: M&W
Performed: Fri Dec 3 15:10:46 2021

Calibrator Value: 500.0 GAPI

Background Reading: 24.0 cps
Calibrator Reading: 637.0 cps

Sensitivity: 0.5500 GAPI/cps



MIDWEST WIRELINE

Company Satchell Creek Petroleum, LLC
Well Bellerive A #2-29
Field
County Graham
State Kansas