



MIDWEST WIRELINE

# DUAL INDUCTION

Company Satchell Creek Petroleum, LLC

Well Bellerive A #2-29

Field

County Graham

State Kansas

Location:

API #: 15-065-24284-00-00

Other Services

NE SE NW  
745 FNL & 1327 FEL

SEC 29 TWP 10S RGE 25W

CNL/CDL  
MEL

Permanent Datum Ground Level Elevation 2522  
Log Measured From Kelly Bushing  
Drilling Measured From Kelly Bushing

Elevation  
K.B. 2529  
D.F.  
G.L. 2522

Date	10/10/2023	
Run Number	One	
Depth Driller	4100	
Depth Logger	4101	
Bottom Logged Interval	4100	
Top Log Interval	200	
Casing Driller	8:625 @ 222	
Casing Logger	222	
Bit Size	7.875	
Type Fluid in Hole	Chemical	
Salinity, ppm CL	2000	
Density / Viscosity	9.3	56
pH / Fluid Loss	10.0	5.8
Source of Sample	Flowline	
Rm @ Meas. Temp	0.80 @	74
Rmt @ Meas. Temp	0.60 @	74
Rmc @ Meas. Temp	1.08 @	74
Source of Rmf / Rmc	Charts	
Rm @ BHT	0.51 @	117
Operating Rig Time	4 Hours	
Max Rec. Temp. F	117	
Equipment Number	P-24	
Location	Hays	
Recorded By	Justin Trout	
Witnessed By	Sean Deenihan	

<<< Fold Here >>>

All interpretations are opinions based on inferences from electrical or other measurements and Midwest Wireline LLC cannot and does not guarantee the accuracy or correctness of any interpretation, and Midwest Wireline LLC will not be liable or responsible for any loss, costs, damages, or expenses incurred or sustained by anyone resulting from any interpretation made by any of our officers, agents or employees.

### Comments

N/A DENOTES NOT AVAILABLE OR NON-APPLICABLE.

St. Peter, Ks, S to Rd C  
2.25 W, S into

Log Measured From: Kelly Bushing 7 Ft. Above Permanent Datum

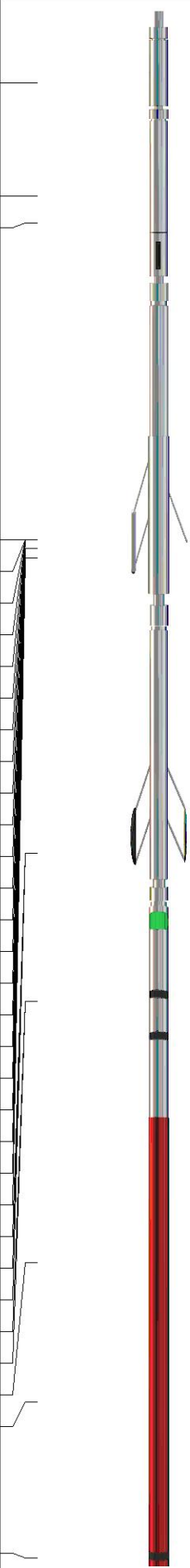
THANK YOU FOR USING MIDWEST WIRELINE LLC  
785-625-3858

### Your Midwest Wireline Crew

Engineer: Justin Trout  
Operator:  
Operator:  
Operator:

### This Log Record Was Witnessed By

Primary Witness: Sean Deenihan  
Secondary Witness:  
Secondary Witness:  
Secondary Witness:

Sensor	Offset (ft)	Schematic	Description	Length (ft)	O.D. (in)	Weight (lb)	
GR	40.75		GR-M&W (107)	3.00	3.50	50.00	
CNLSC CNSSC	37.65 36.90		CNT-M&W (207)	5.00	3.50	100.00	
				MWLith-STEP LITHO (704-10) Long Litho Mandrel	8.92	5.00	250.00
LCAL	28.21						
LLW8N	28.21						
LLW7N	28.21						
LLW6N	28.21						
LLW5N	28.21						
LLW4N	28.21						
LLW3N	28.21						
LLW2N	28.21			ML-PSIML (401)	7.58	4.00	65.00
LLW1N	28.21						
LSLOCK	27.96						
LLLOCK	27.96						
PELTMPR	27.96						
LSHVNG	27.96						
LLHVNG	27.96						
LSW8N	27.71						
LSW7N	27.71						
LSW6N	27.71						
LSW5N	27.71						
LSW4N	27.71						
LSW3N	27.71						
LSW2N	27.71						
LSW1N	27.71						
MCAL	19.58		DIL-M&W (507)	18.25	3.50	220.00	
MI	19.58						
MN	19.58						
RLL3F	15.50						
RLL3	15.50						
CILD	8.33						
CILM	4.50						
SP	0.20						

Dataset: satchell creek\_bellerive a #2-29.db: field/well/STKML/pass3.1  
 Total length: 42.75 ft  
 Total weight: 685.00 lb  
 O.D.: 5.00 in

# Log Variables

DatabaseC:\ProgramData\Warrion\Data\satchell creek\_bellerive a #2-29.db  
 Dataset field/well/STKML/pass3.1/\_vars\_

## Top - Bottom

BOREID in 7.875	BOTTEMP degF 117	CASEOD in 5.5	CASETHCK in 0	FLUIDDEN g/cc 1	MATRXDEN g/cc 2.71	NPORSEL Limestone	PERFS No
SNDERR mmho/m 0	SNDERRM mmho/m -5	SPSHIFT mV 158	SRFTEMP degF 74	SZCOR Off	TDEPTH ft 4101		

## Variable Description

BOREID : Borehole I.D.  
 BOTTEMP : Bottom Hole Temperature  
 CASEOD : Casing O.D.  
 CASETHCK : Casing Thickness  
 FLUIDDEN : Fluid Density  
 MATRXDEN : Matrix Density  
 NPORSEL : Neutron Porosity Curve Select

PERFS : Perforation Flag  
 SNDERR : Deep Sonde Error Correction  
 SNDERRM : Medium Sonde Error Correction  
 SPSHIFT : S.P. Baseline Offset  
 SRFTEMP : Surface Temperature  
 SZCOR : CN Size Cor. ?  
 TDEPTH : Total Depth

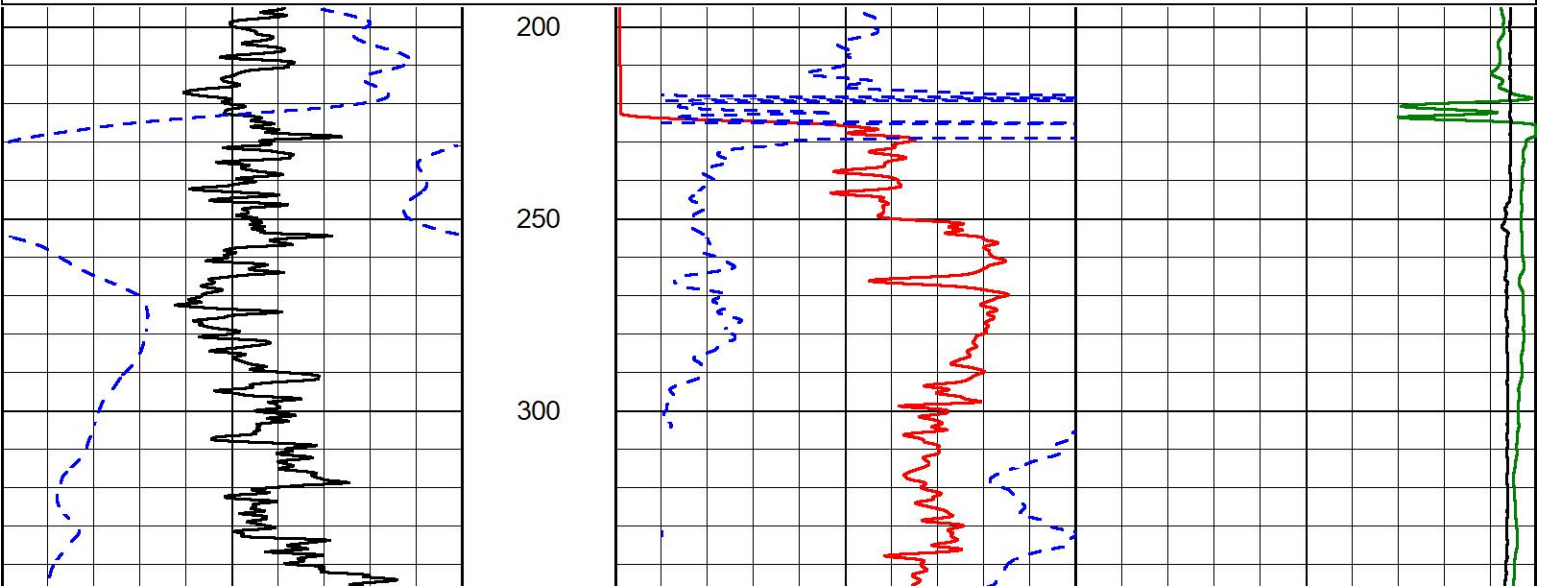


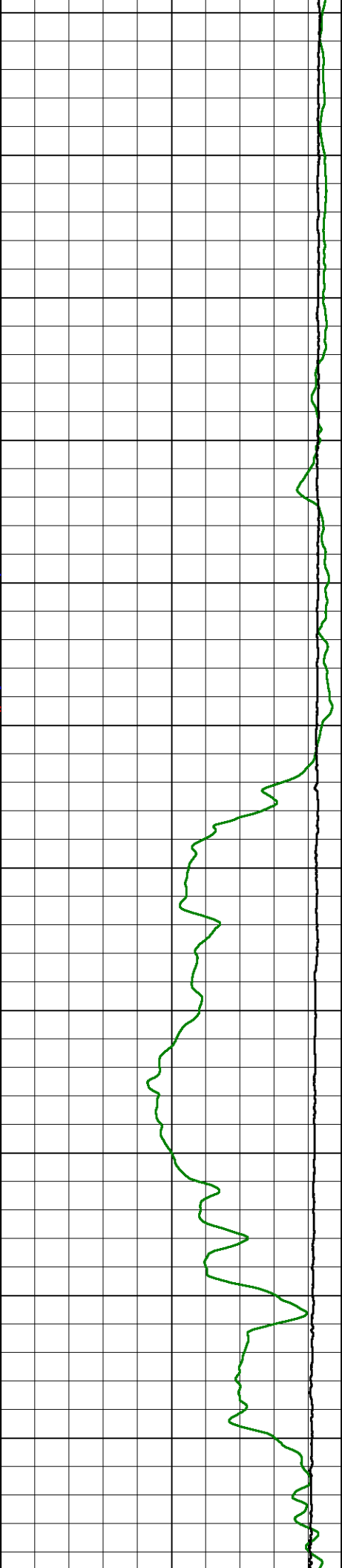
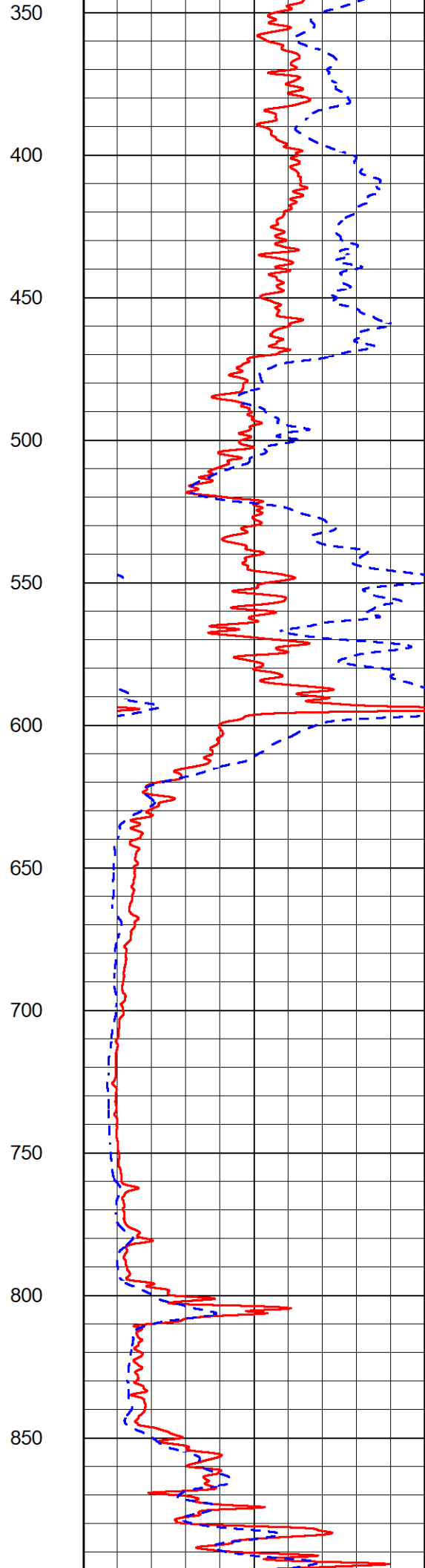
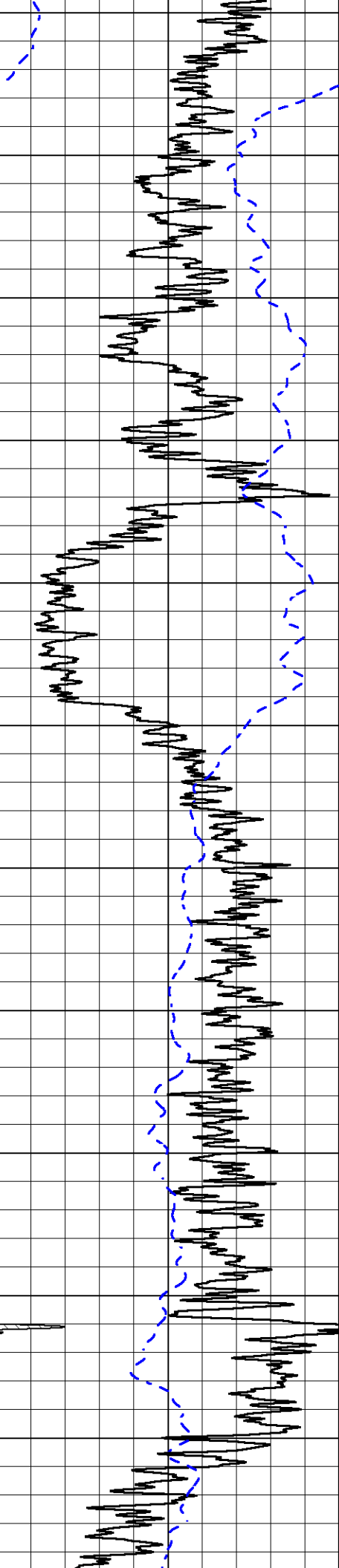
## 2" SCALE RESISTIVITY

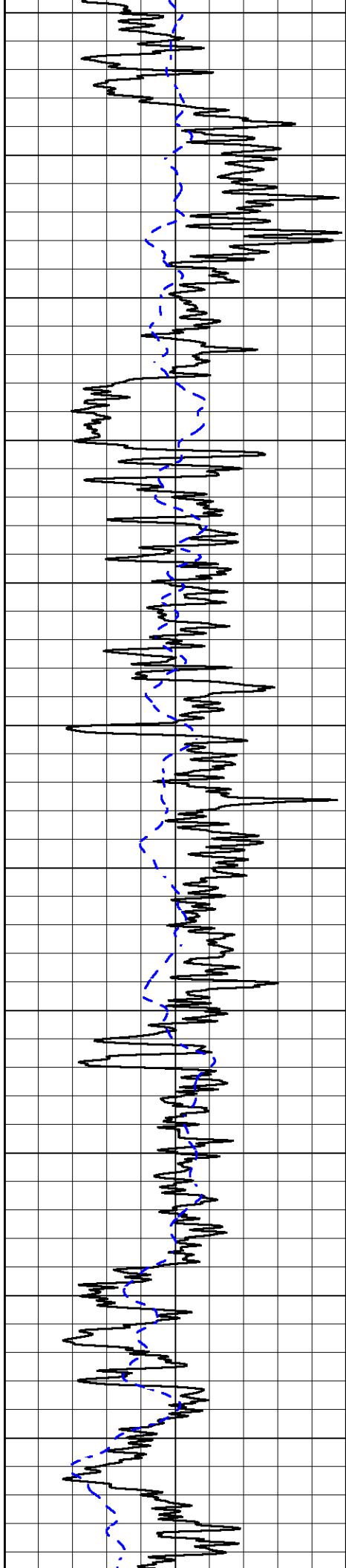
### MAIN PASS

Database File satchell creek\_bellerive a #2-29.db  
 Dataset Pathname STKML/pass3.2  
 Presentation Format \_dil2in  
 Dataset Creation Tue Oct 10 17:48:51 2023  
 Charted by Depth in Feet scaled 1:600

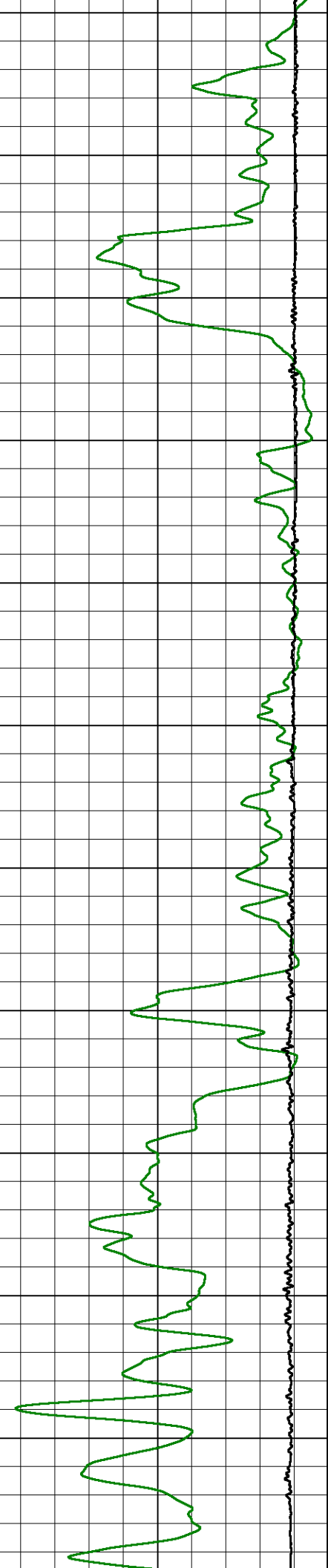
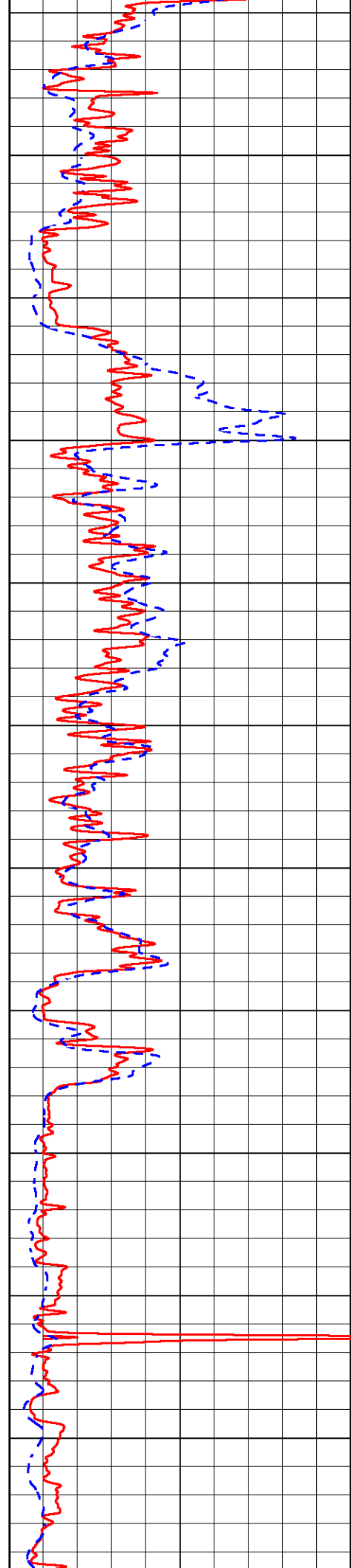
0	Gamma Ray (GAPI)	150	1000	Conductivity (mmho/m)	0
-200	SP (mV)	0	15000	Line Tension (lb)	0
			0	Shallow Resistivity (Ohm-m)	50
			0	Deep Resistivity (Ohm-m)	50
				Shallow Resistivity	
			50	(Ohm-m)	200
			50	Deep Resistivity (Ohm-m)	200

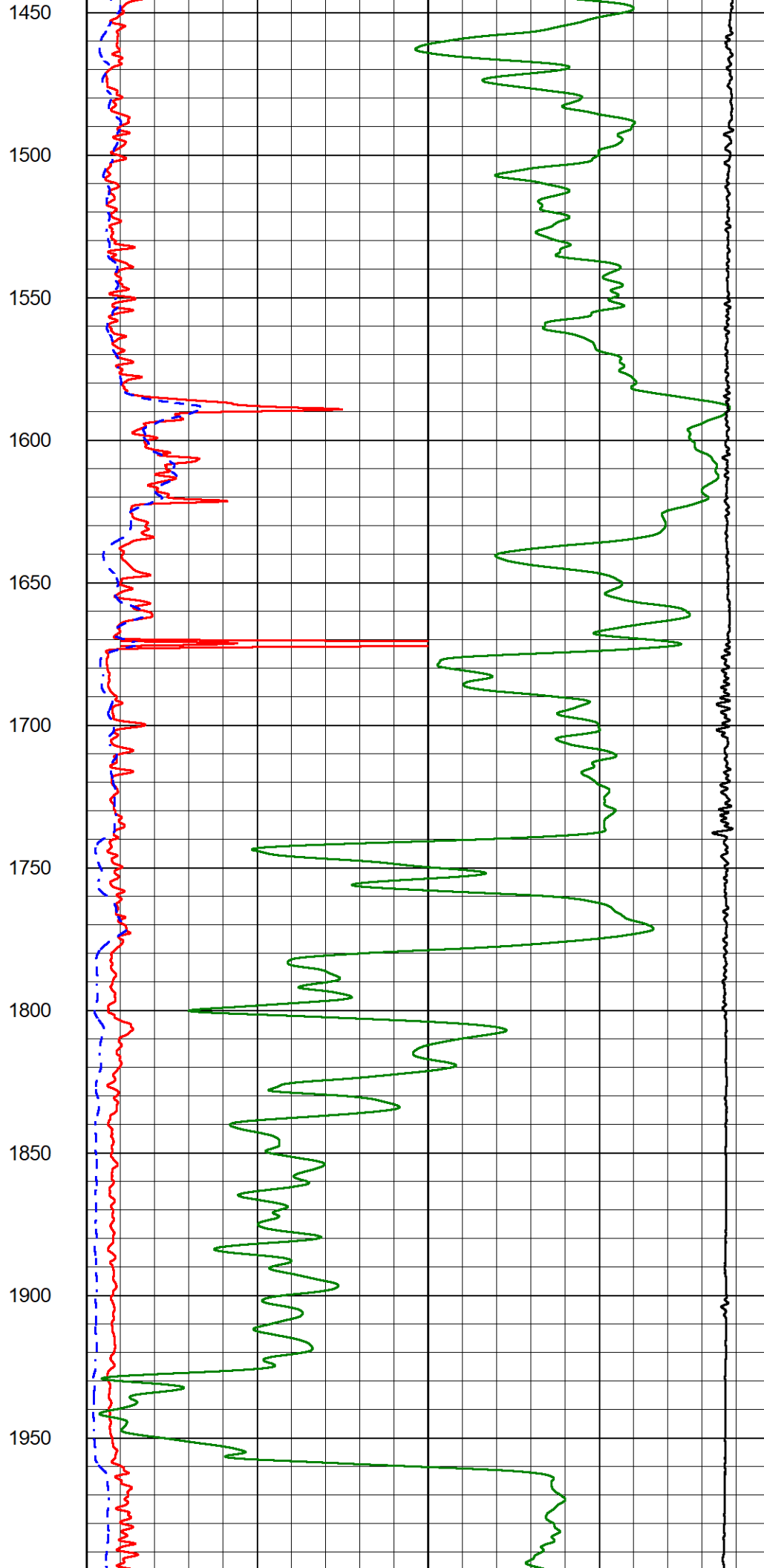
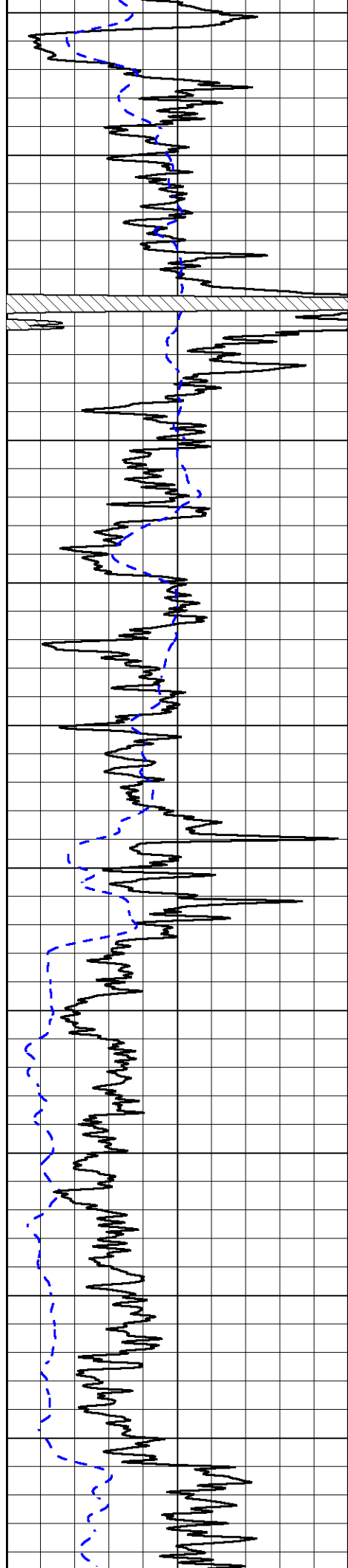


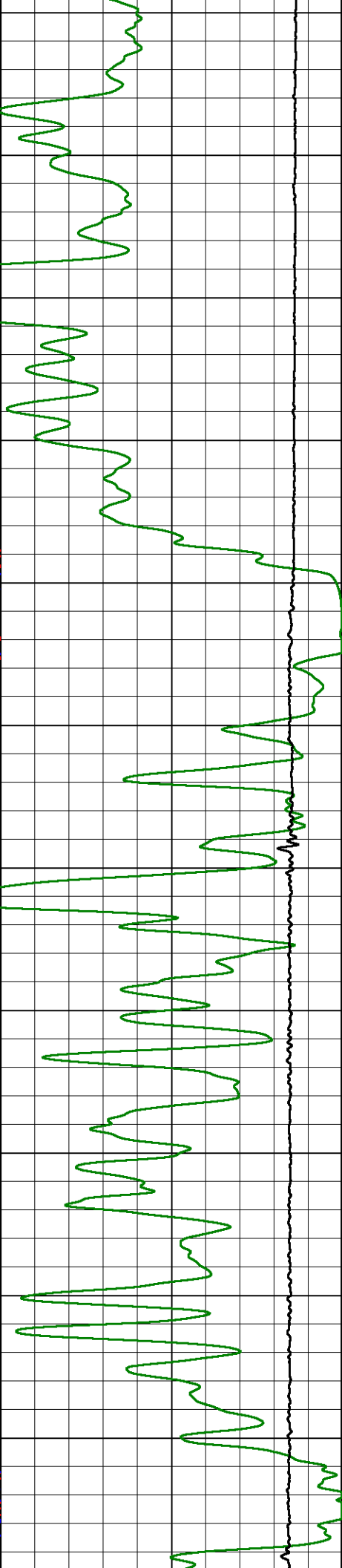
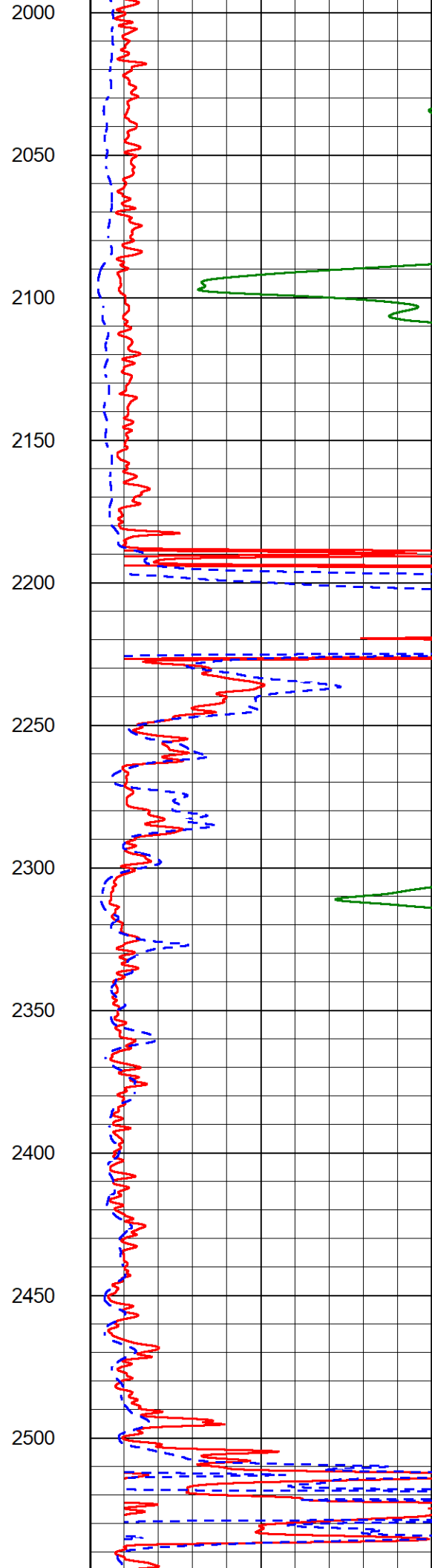
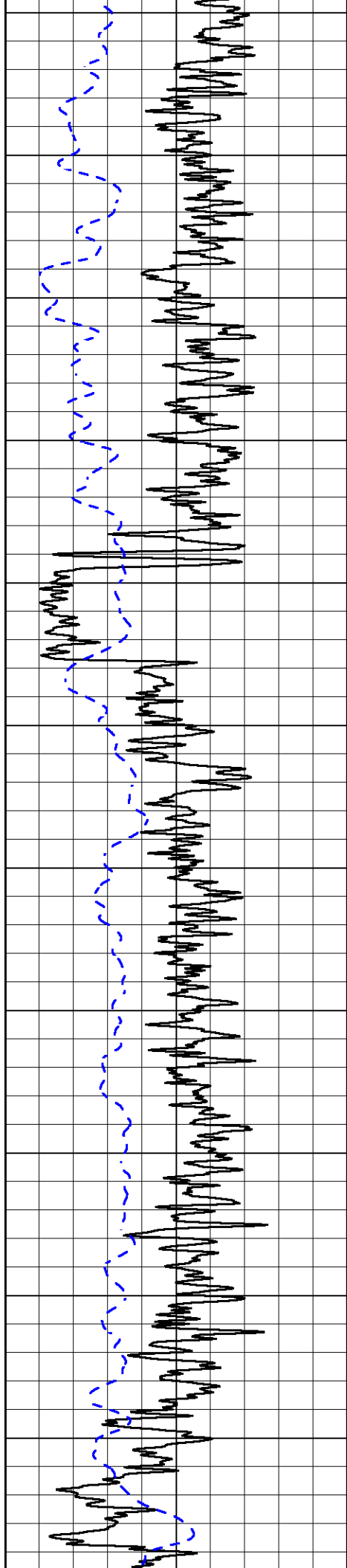


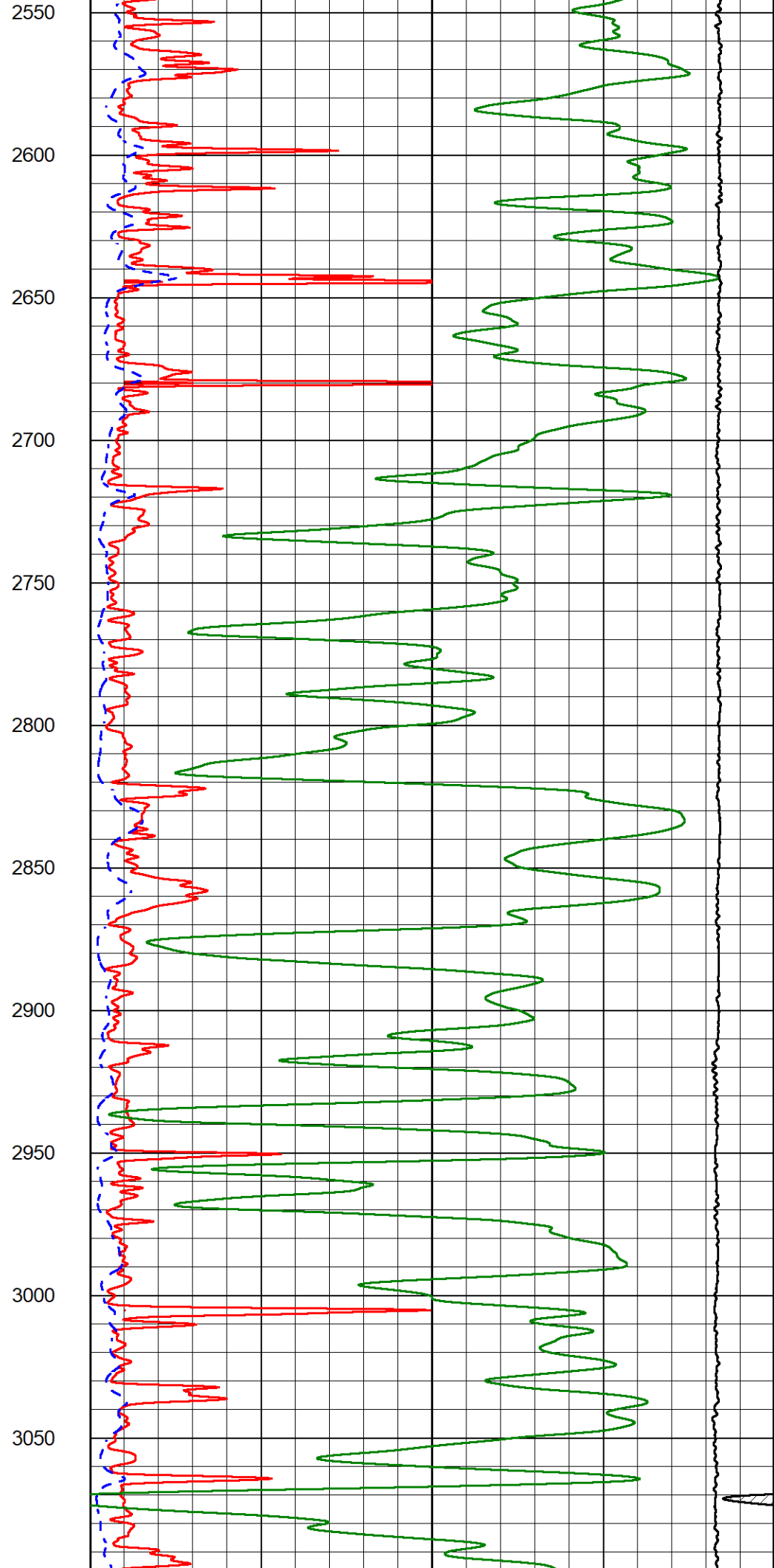
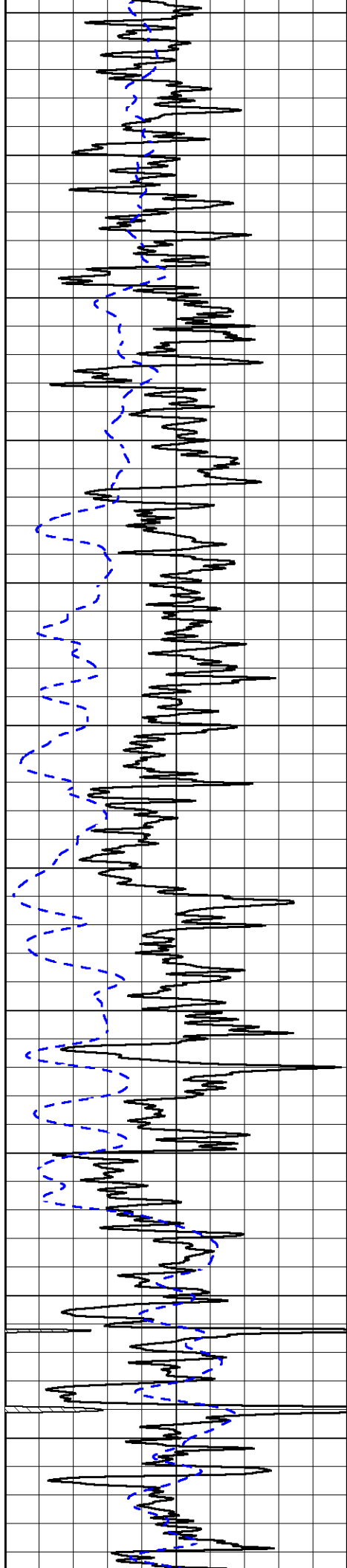


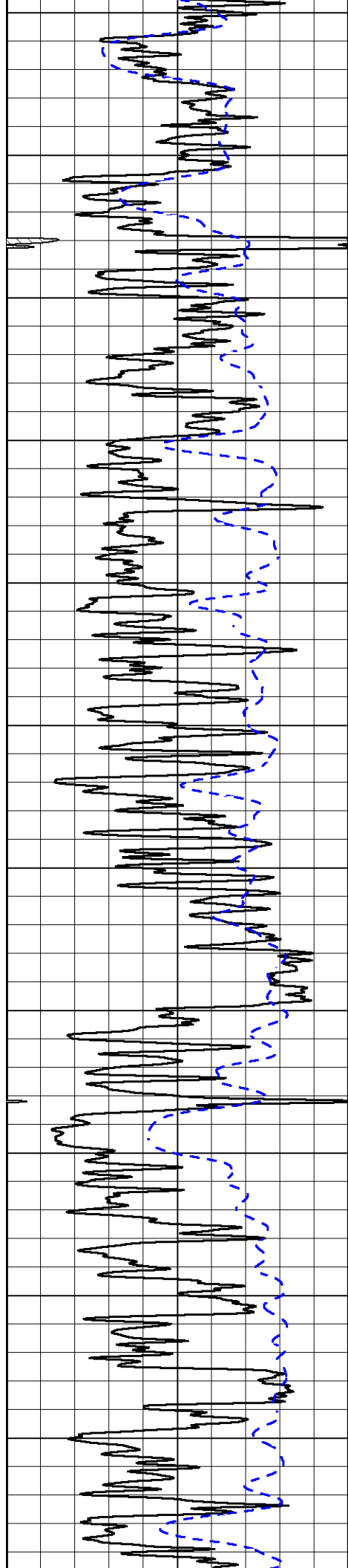
900  
950  
1000  
1050  
1100  
1150  
1200  
1250  
1300  
1350  
1400



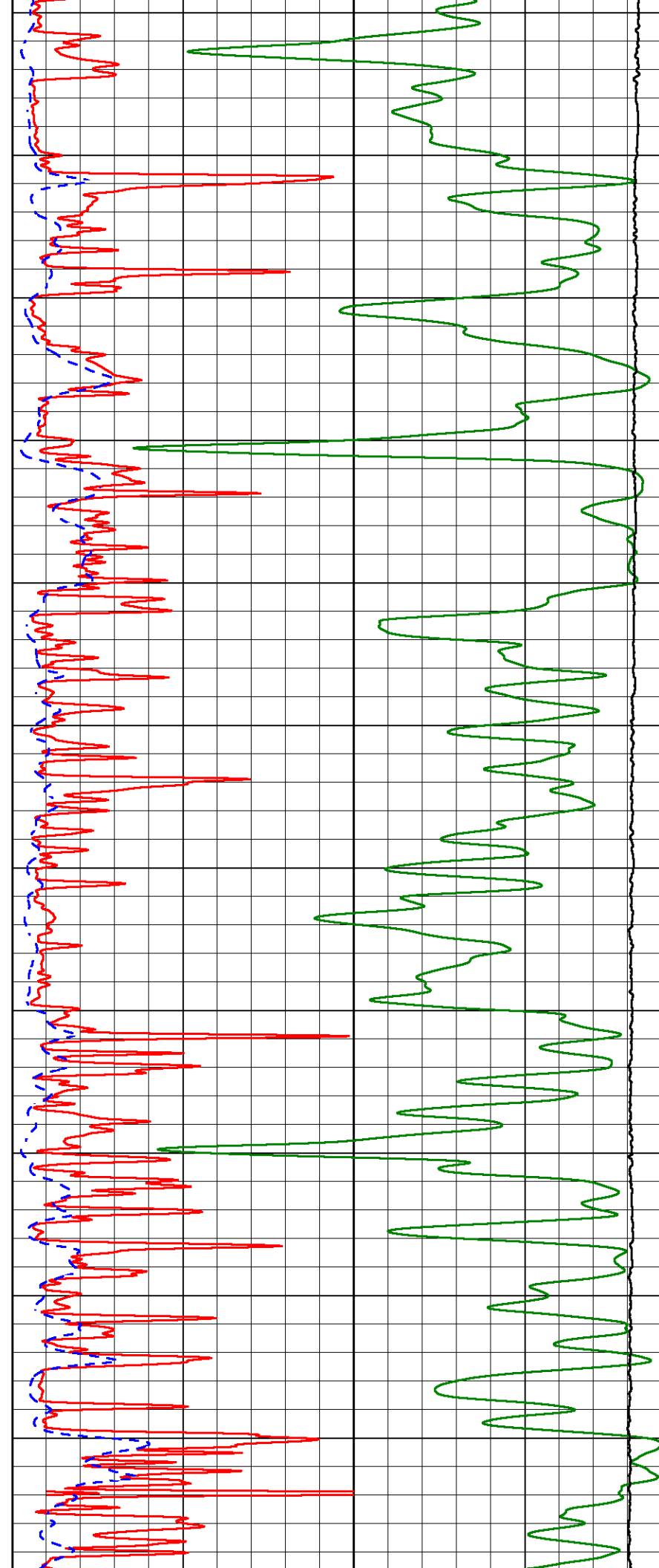


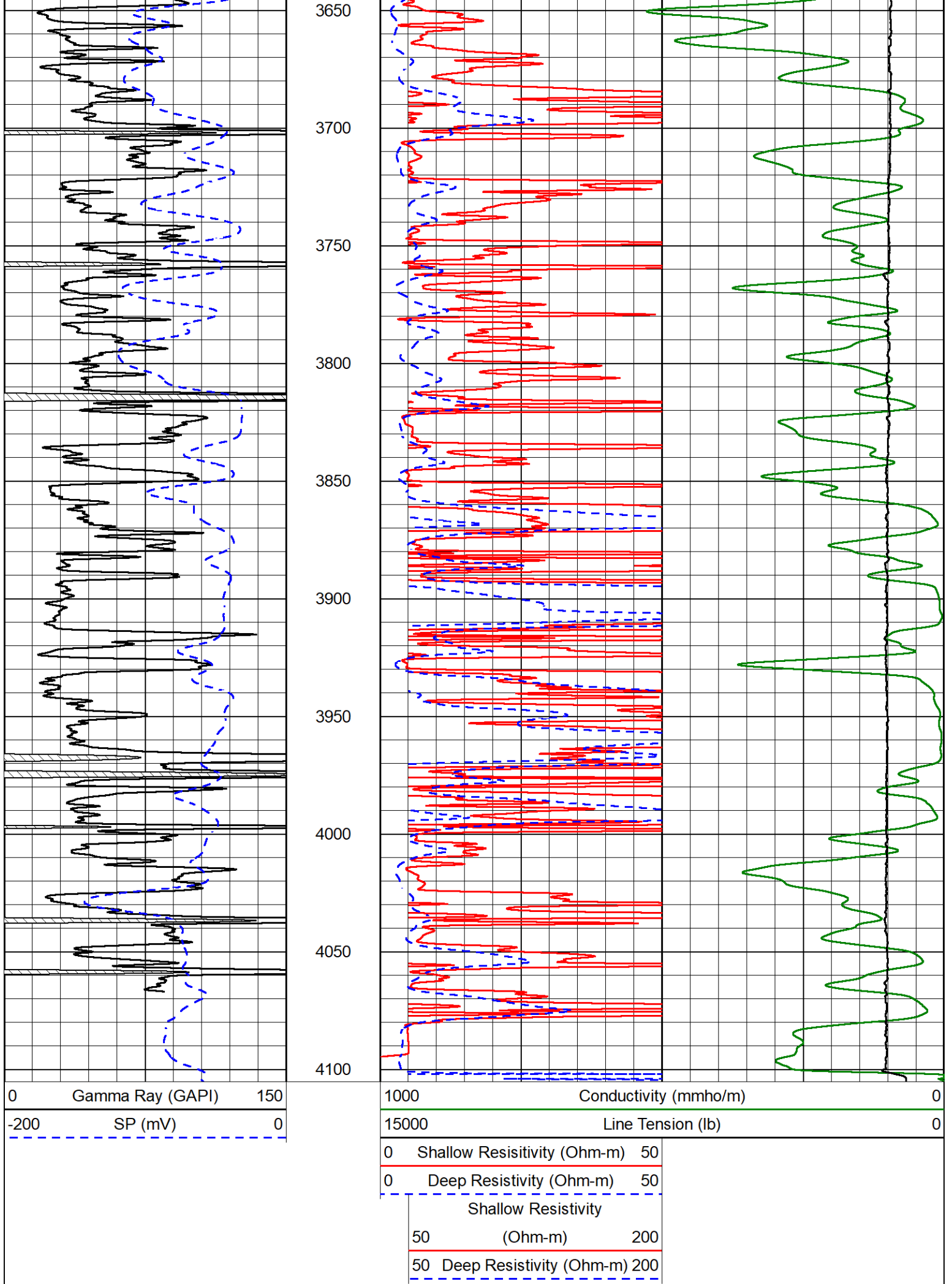






3100  
3150  
3200  
3250  
3300  
3350  
3400  
3450  
3500  
3550  
3600







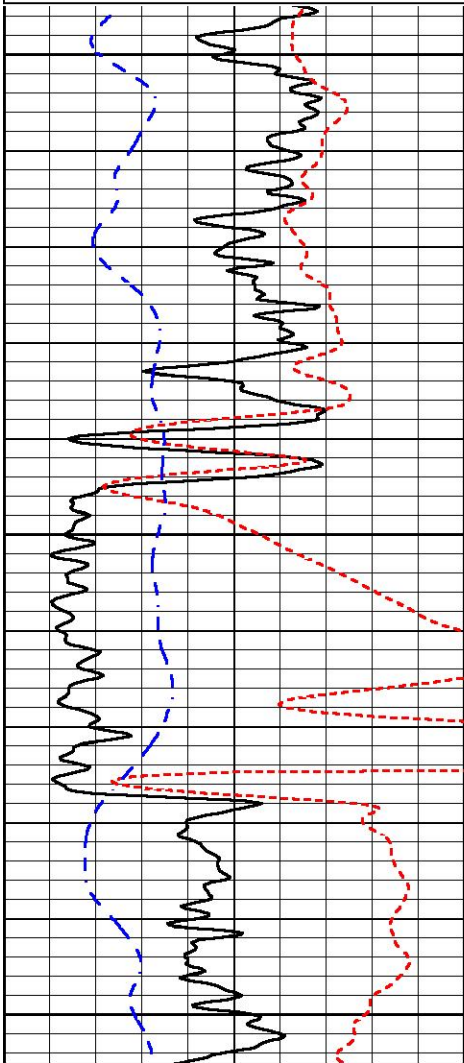
# ANHYDRITE SECTION

## MAIN PASS

Database File satchell creek\_bellerive a #2-29.db  
 Dataset Pathname STKML/pass3.4  
 Presentation Format \_dil  
 Dataset Creation Tue Oct 10 17:15:17 2023  
 Charted by Depth in Feet scaled 1:240

0	Gamma Ray (GAPI)	150
-160	RXORT	40
-200	SP (mV)	0

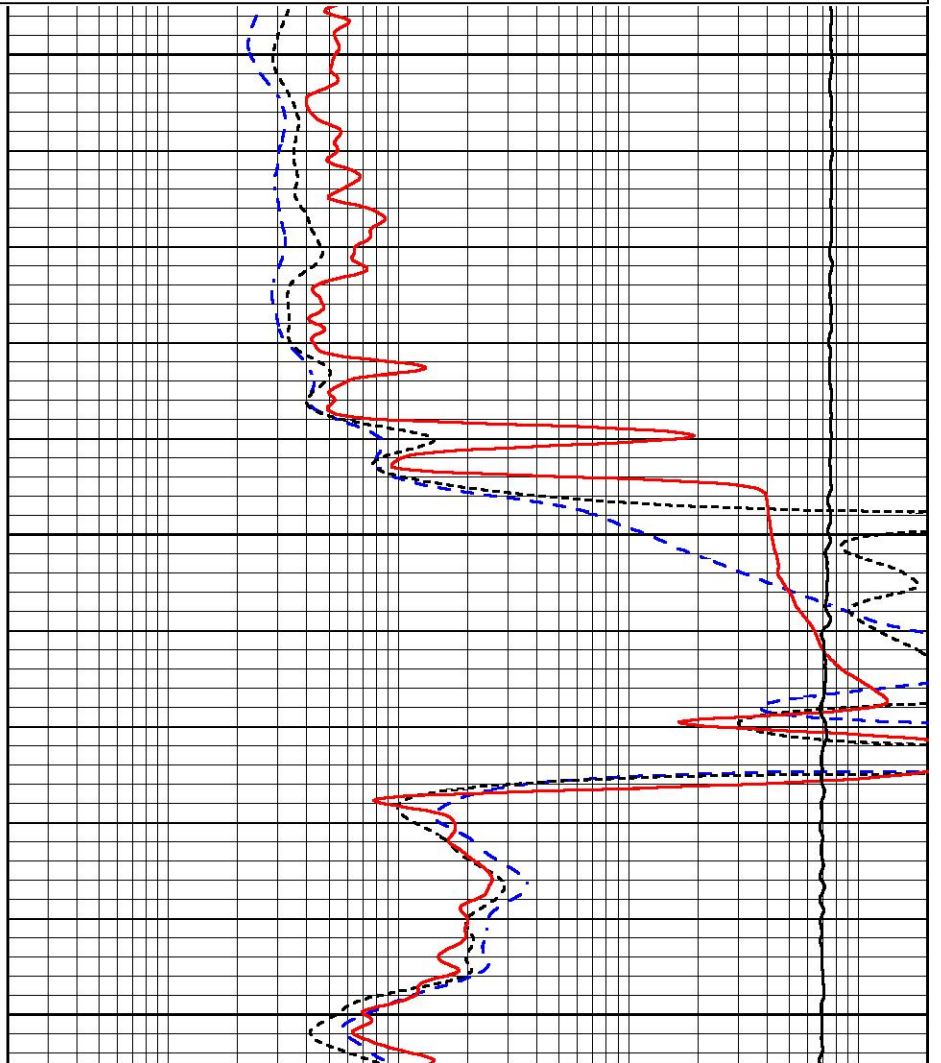
0.2	Deep Resistivity (Ohm-m)	2000
0.2	Medium Resistivity (Ohm-m)	2000
0.2	RLL3 (Ohm-m)	2000
10000	Line Tension (lb)	0



2150

2200

2250



0	Gamma Ray (GAPI)	150
-160	RXORT	40
-200	SP (mV)	0

0.2	Deep Resistivity (Ohm-m)	2000
0.2	Medium Resistivity (Ohm-m)	2000
0.2	RLL3 (Ohm-m)	2000
10000	Line Tension (lb)	0



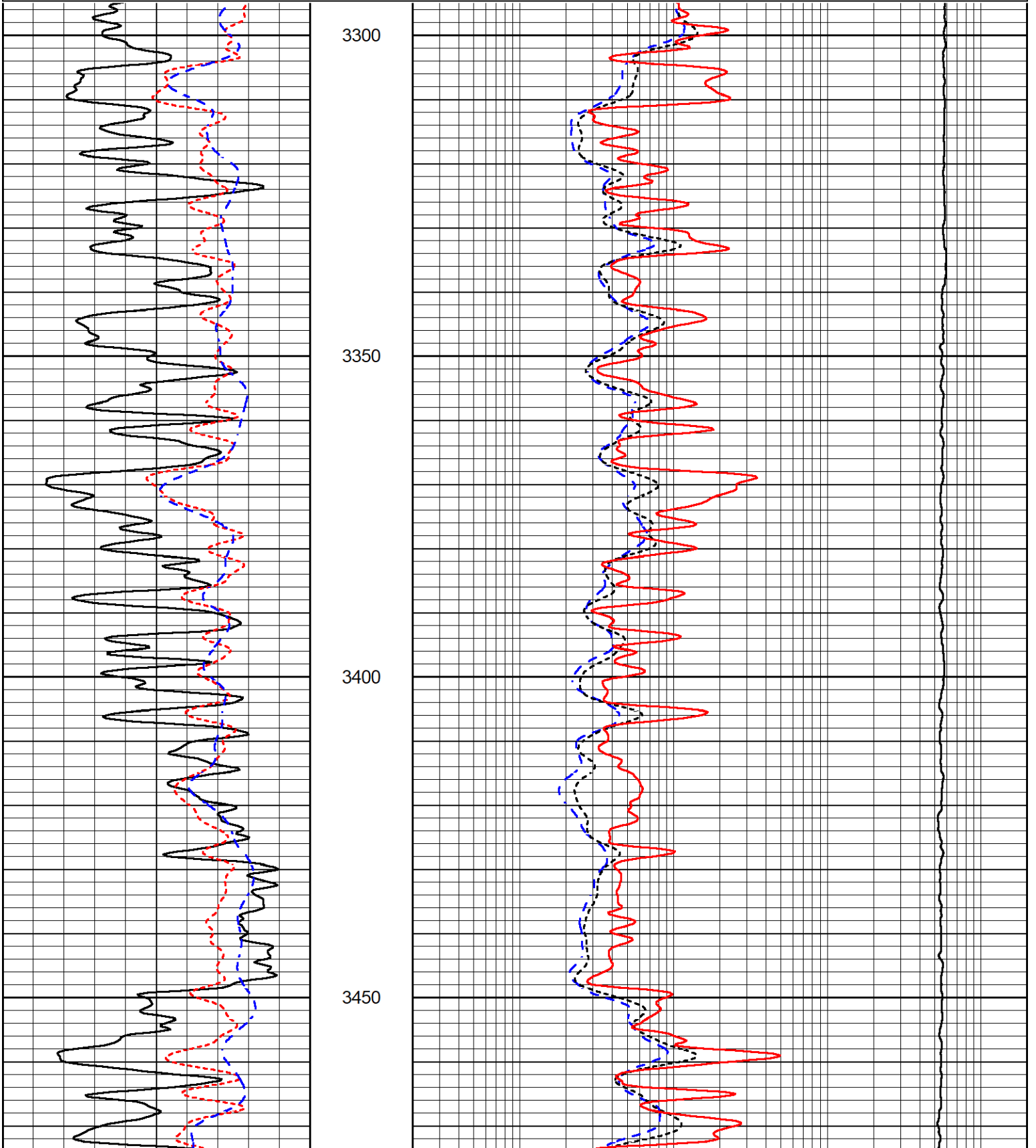
# DETAIL SECTION

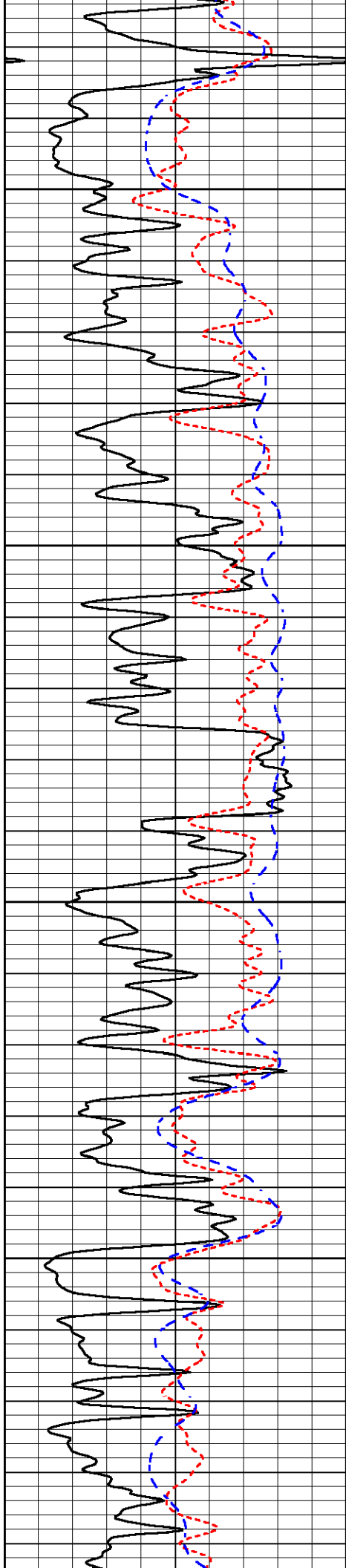
## MAIN PASS

Database File satchell creek\_bellerive a #2-29.db  
 Dataset Pathname STKML/pass3.1  
 Presentation Format \_dil  
 Dataset Creation Tue Oct 10 17:48:18 2023  
 Charted by Depth in Feet scaled 1:240

0	Gamma Ray (GAPI)	150
-160	RXORT	40
-200	SP (mV)	0

0.2	Deep Resistivity (Ohm-m)	2000
0.2	Medium Resistivity (Ohm-m)	2000
0.2	RLL3 (Ohm-m)	2000
10000	Line Tension (lb)	0



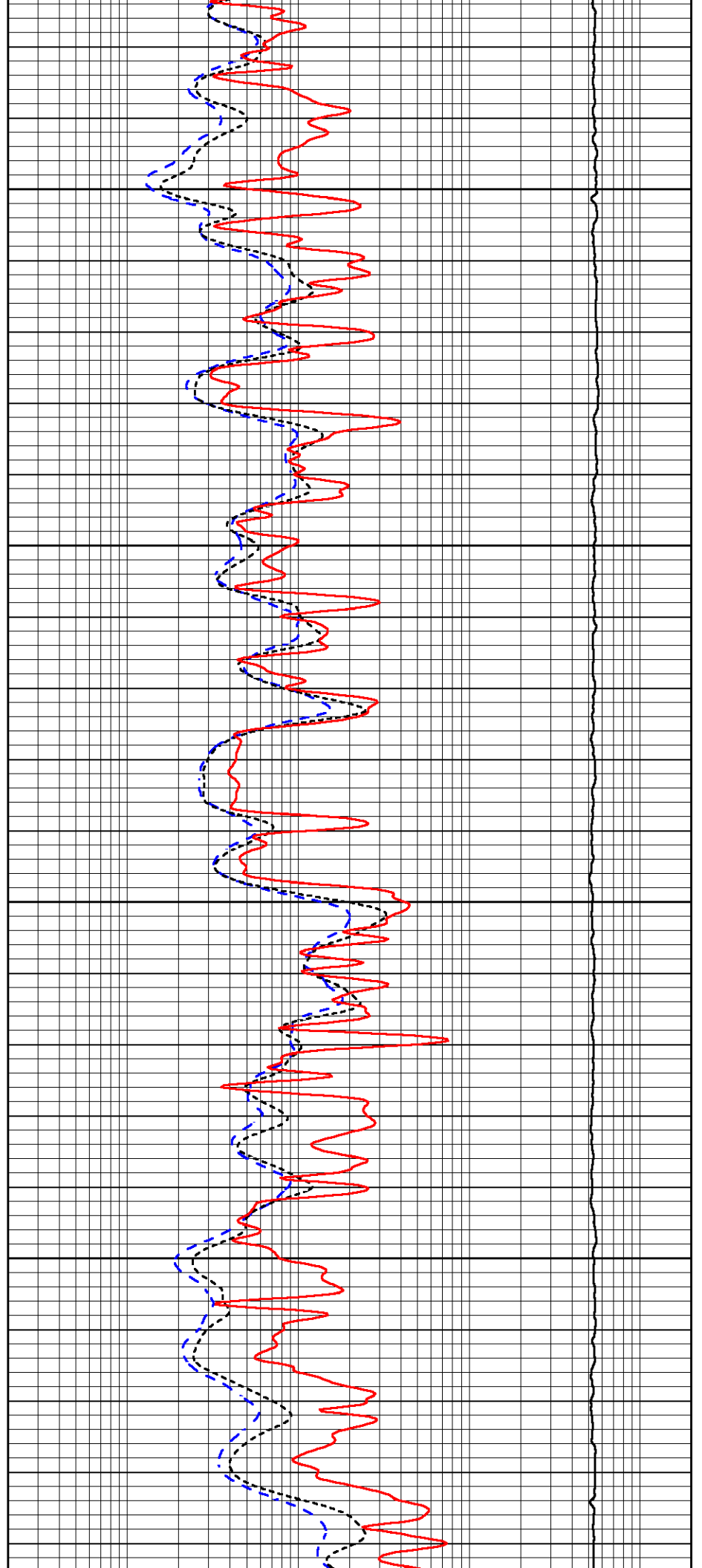


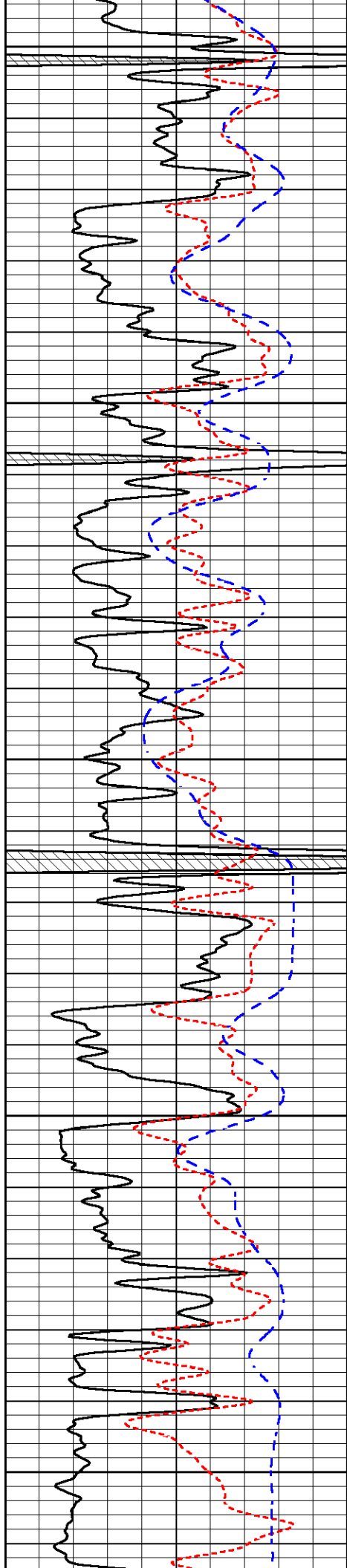
3500

3550

3600

3650





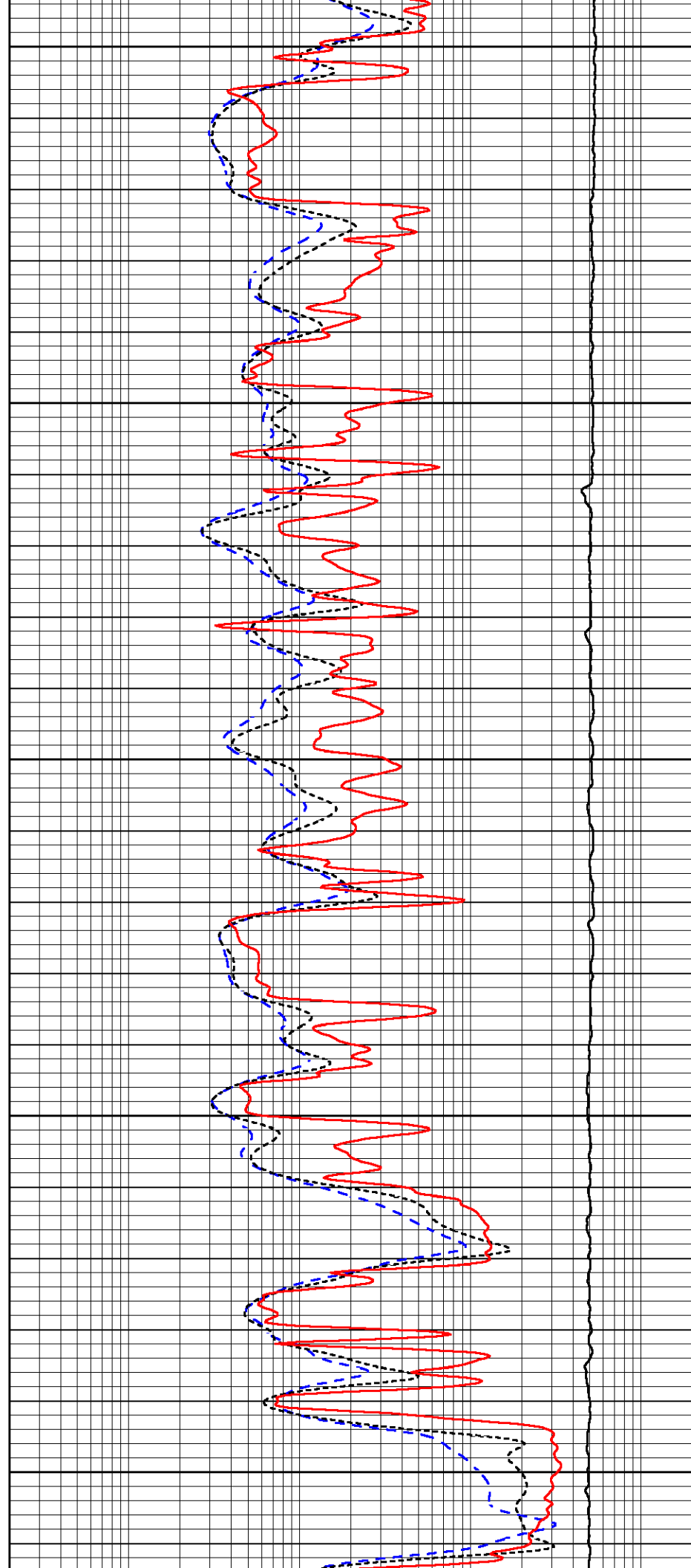
3700

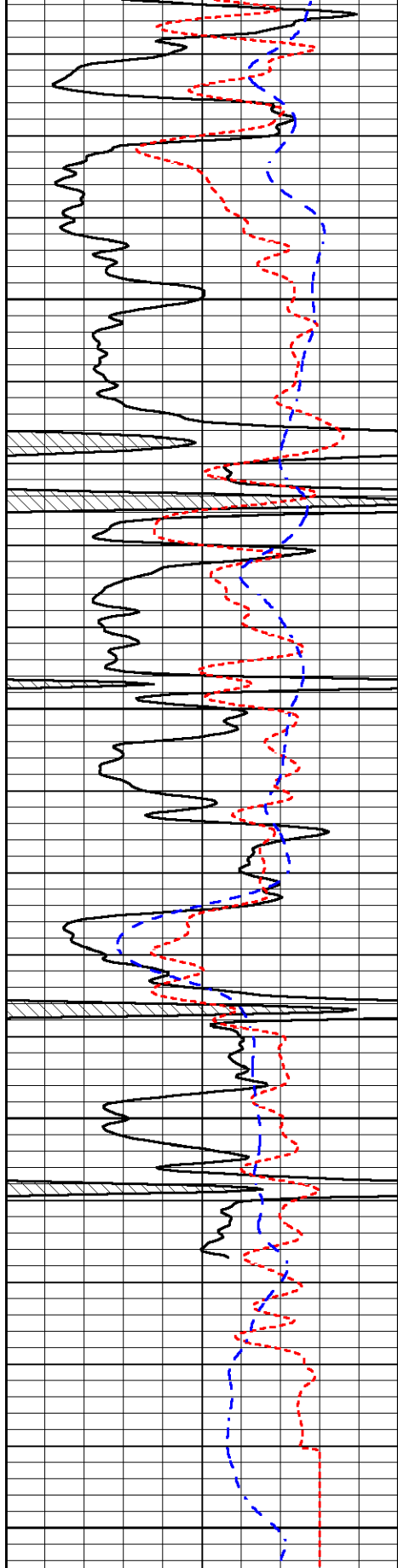
3750

3800

3850

3900





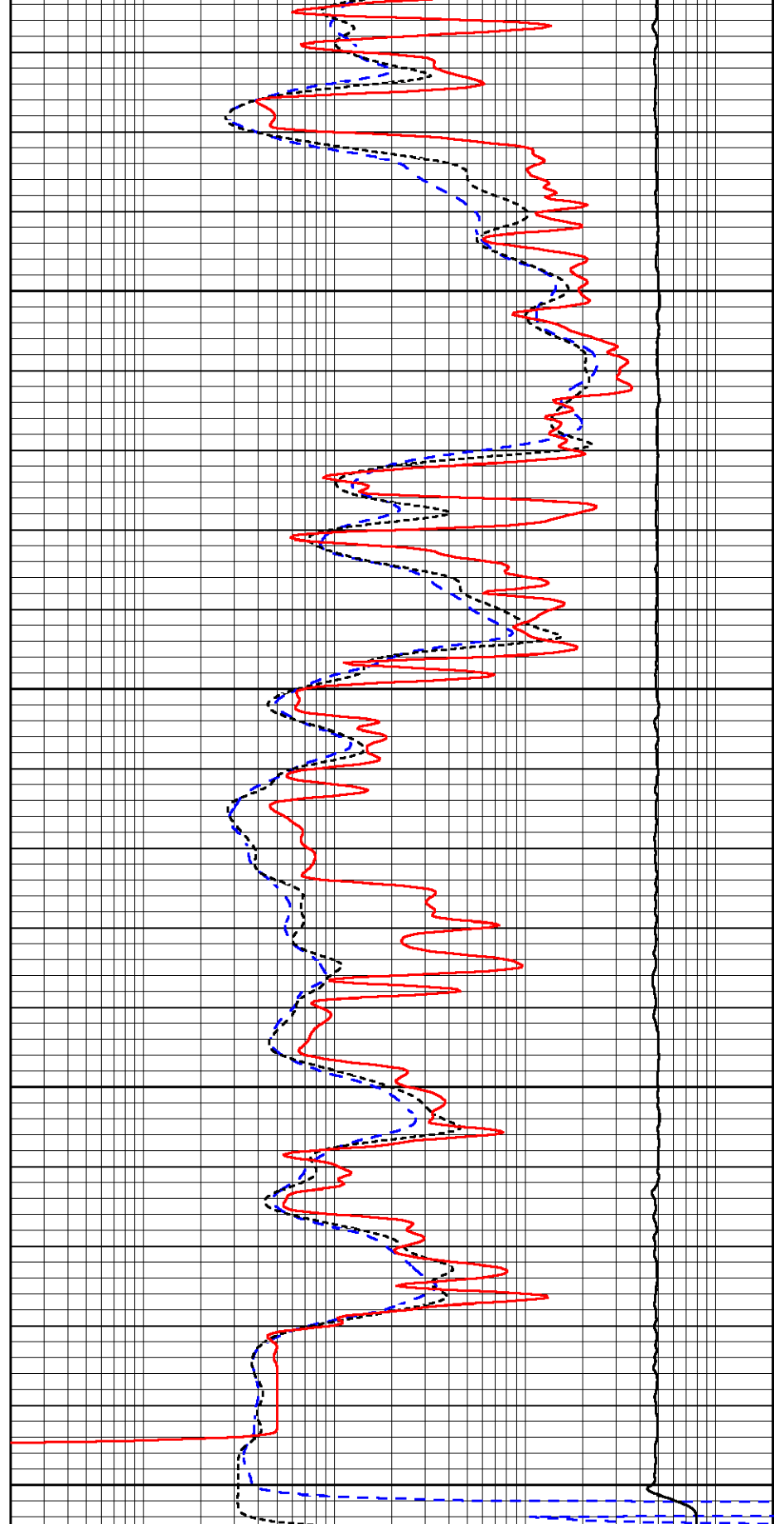
3950

4000

4050

4100

0	Gamma Ray (GAPI)	150
-160	RXORT	40
-200	SP (mV)	0



0.2	Deep Resistivity (Ohm-m)	2000
0.2	Medium Resistivity (Ohm-m)	2000
0.2	RLL3 (Ohm-m)	2000
10000	Line Tension (lb)	0



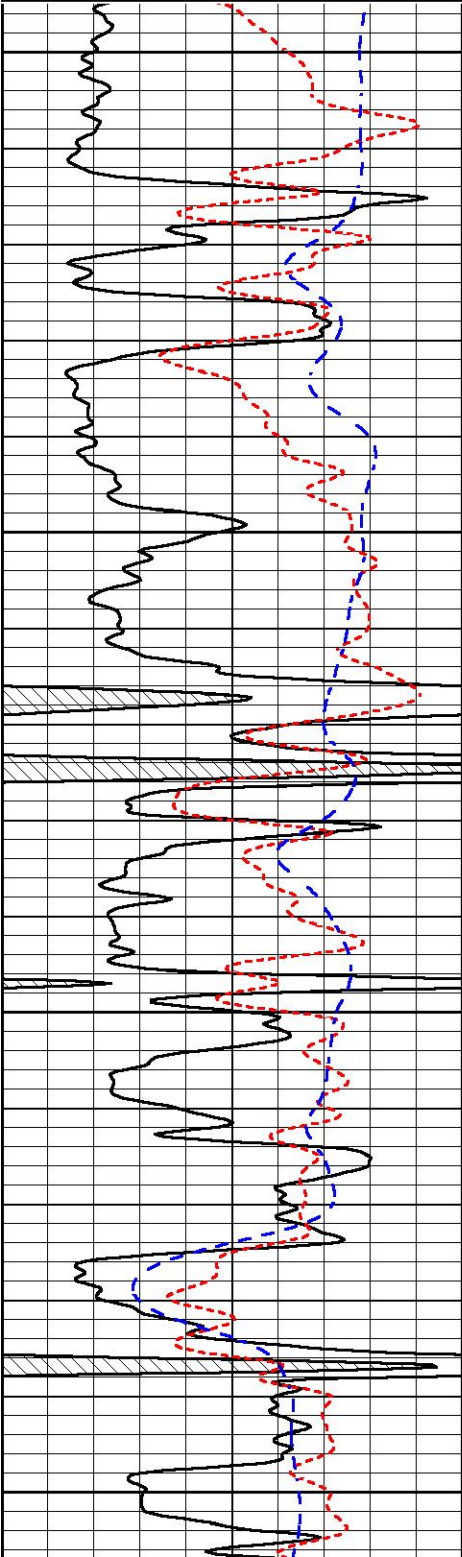
# REPEAT SECTION

## REPEAT PASS

Database File satchell creek\_bellerive a #2-29.db  
 Dataset Pathname STKML/pass2.1  
 Presentation Format \_dil  
 Dataset Creation Tue Oct 10 17:20:55 2023  
 Charted by Depth in Feet scaled 1:240

0	Gamma Ray (GAPI)	150
-160	RXORT	40
-200	SP (mV)	0

0.2	Deep Resistivity (Ohm-m)	2000
0.2	Medium Resistivity (Ohm-m)	2000
0.2	RLL3 (Ohm-m)	2000
10000	Line Tension (lb)	0

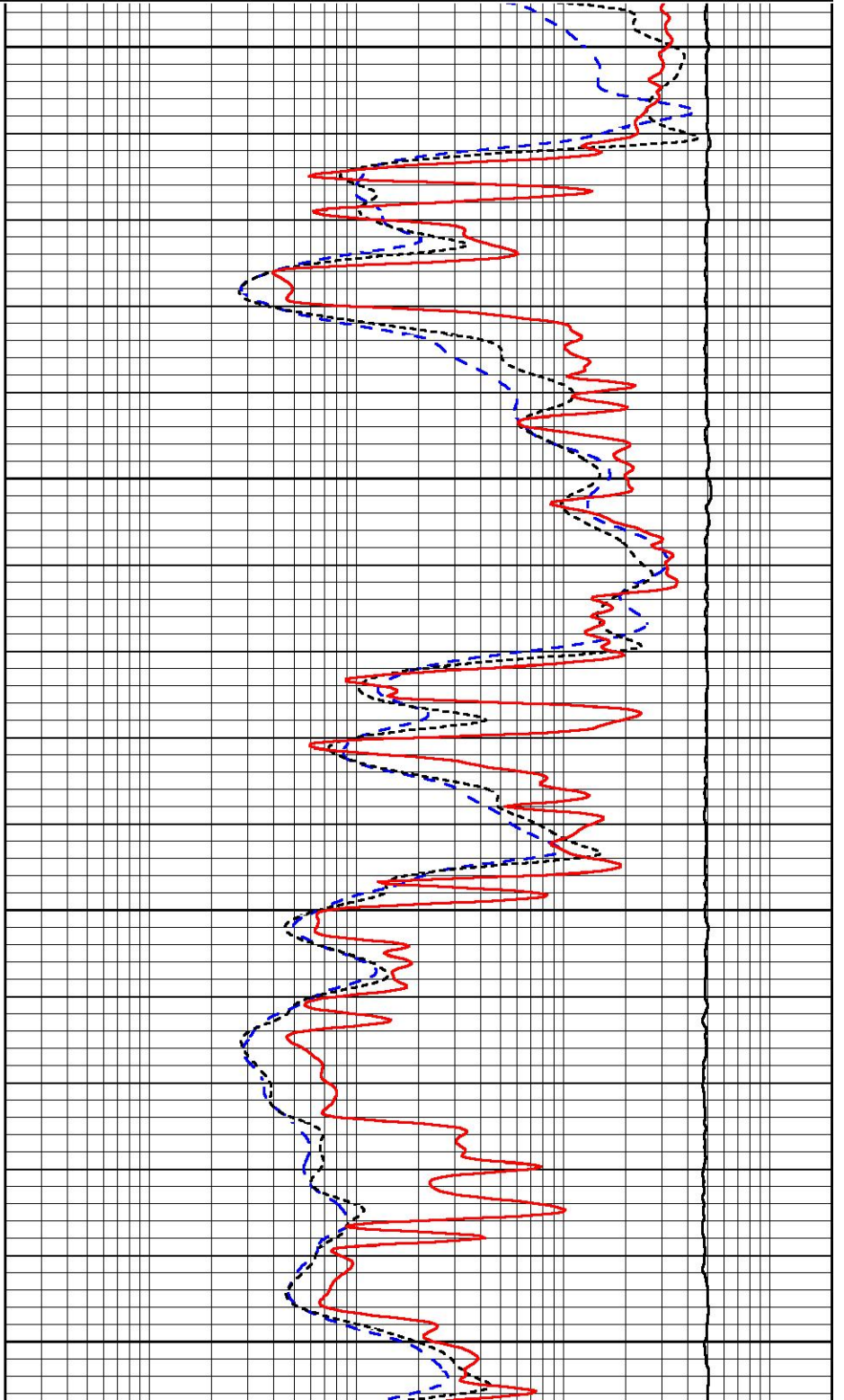


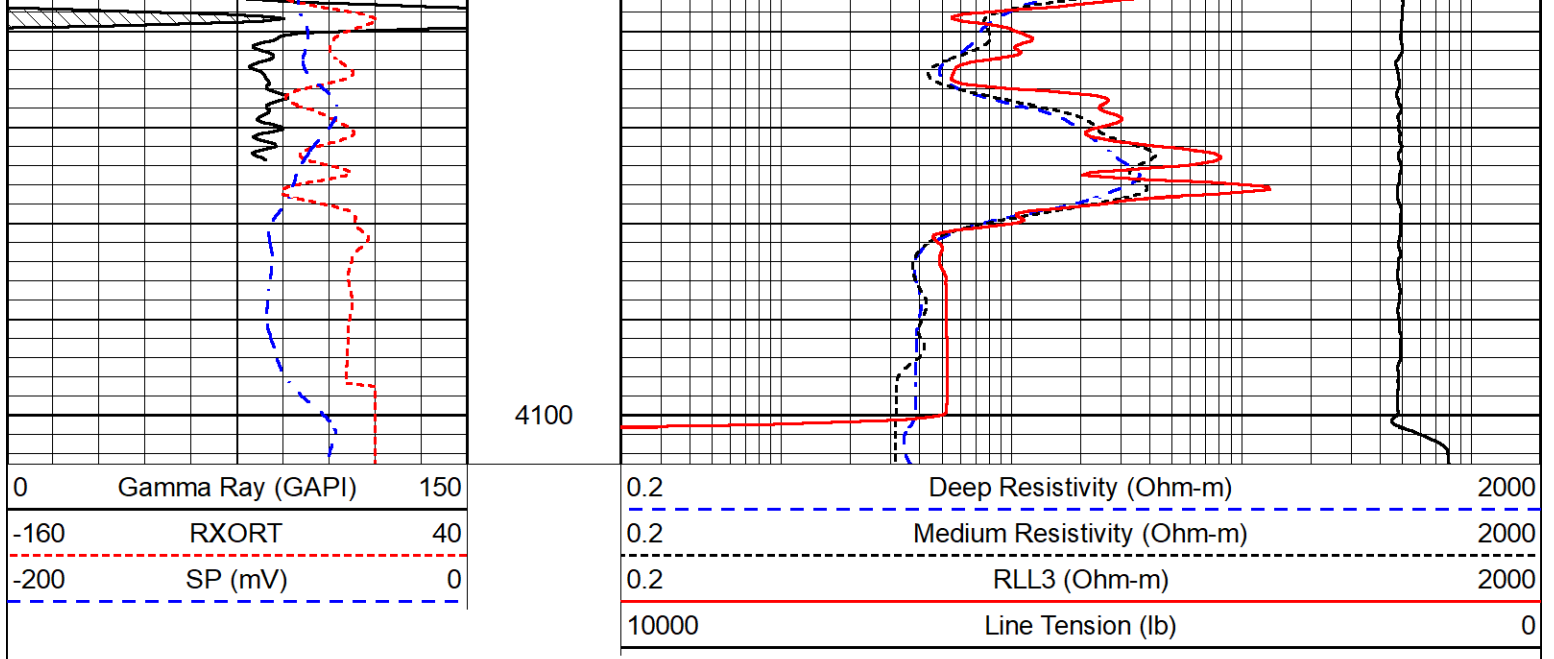
3900

3950

4000

4050





### Calibration Report

Database File satchell creek\_bellerive a #2-29.db  
 Dataset Pathname STKML/pass3.1  
 Dataset Creation Tue Oct 10 17:48:18 2023

### Dual Induction Calibration Report

Serial-Model: 507-M&W  
 Surface Cal Performed:

Loop:	Readings		References			Results	
	Air	Loop	Air	Loop		m	b
Deep	68.570	638.100	0.000	255.800	mmho/m	0.500	-37.000
Medium	184.288	716.191	0.000	255.800	mmho/m	0.450	-79.000

### Microlog Calibration Report

Serial-Model: 401-PSIML  
 Performed: Mon Sep 25 22:02:56 2023

	Readings		References			Results	
	Zero	Cal	Zero	Cal		m	b
Normal	0.0000	1.0000	0.0000	1.0000	Ohm-m	21000.0000	-1.0000
Inverse	0.0000	1.0000	0.0000	1.0000	Ohm-m	21000.0000	-0.7500
Caliper	1.0052	1.0858	5.0000	16.5000	in	142.7190	-138.7800

### LITHODENSITY Calibration Report

Serial Number: 704-10  
 Tool Model: STEP LITHO  
 Performed: Fri Jun 23 15:26:01 2023

Source:

	Win1	Win2	Win3	Win4	Win5	Win6	Win7	Win8	
Background:									
SS:	51	54	202	252	21	70	42	1	cps
LS:	85	96	363	462	53	147	97	3	cps

Aluminum:  
 SS: 870 1018 2321 2004 37 71 43 2 cps  
 LS: 1057 1828 3315 1570 61 147 91 5 cps

Magnesium:  
 SS: 1459 1669 3829 2914 42 70 46 3 cps  
 LS: 4526 7550 13047 4982 98 135 93 13 cps

Aluminum+Iron:  
 SS: 553 719 1939 1750 37 72 45 2 cps  
 LS: 613 1297 2812 1404 60 146 96 4 cps

	Density			PE				
	Actual	Calibrated		Actual	Calibrated	Quality		
Background:								
SS:						0.245		
LS:						0.205		
Aluminum:								
SS:	2.6000	2.6000	g/cc			0.240		
LS:	2.6000	2.6000	g/cc			0.236		
Magnesium:								
SS:	1.6800	1.6800	g/cc	2.5700	2.5700	0.210		
LS:	1.6800	1.6800	g/cc	2.5700	2.5700	0.184		
Aluminum+Iron:								
SS:						6.1800	0.228	
LS:						6.1800	0.206	

Before Survey  
 Performed: Wed Feb 9 13:15:42 2022

SS: 0 0 0 0 0 0 0 0 cps  
 LS: 1370 1580 3705 3037 48 80 50 4 cps

After Survey  
 Performed: Wed Feb 9 13:16:02 2022

SS: 0 0 0 0 0 0 0 0 cps  
 LS: 1400 1600 3800 3100 60 100 70 6 cps

Caliper:	Reference:	Reading:
Small Ring:	6.0 in	0.2
Large Ring:	15.0 in	0.8
Gain:	16.161	
Offset:	1.230	

Compensated Neutron Calibration Report

Serial Number: 207  
 Tool Model: M&W

CALIBRATION

Detector	Readings	Target	Normalization
Short Space	6240.00 cps	1000.00 cps	1.6025
Long Space	460.00 cps	1000.00 cps	1.9500

PRE-SURVEY VERIFICATION

	Detector	Readings	Measured	Target
1)	Short Space	cps		
	Long Space	cps	pu	pu
2)	Short Space	cps		
	Long Space	cps	pu	
3)	Short Space	cps		
	Long Space	cps	pu	

POST-SURVEY VERIFICATION

	Detector	Readings	Measured	Target
1)	Short Space Long Space	cps cps	pu	pu
2)	Short Space Long Space	cps cps	pu	pu
3)	Short Space Long Space	cps cps	pu	pu

Gamma Ray Calibration Report

Serial Number:	107	
Tool Model:	M&W	
Performed:	Fri Dec 3 15:10:46 2021	
Calibrator Value:	500.0	GAPI
Background Reading:	24.0	cps
Calibrator Reading:	637.0	cps
Sensitivity:	0.5500	GAPI/cps



Company	Satchell Creek Petroleum, LLC
Well	Bellerive A #2-29
Field	
County	Graham
State	Kansas