



MIDWEST WIRELINE

**DUAL INDUCTION
DUAL COMPENSATED POROSITY
MICRORESISTIVITY**

Company Satchell Creek Petroleum, LLC
Well Bellerive A #2-29
Field
County Graham
State Kansas

Company Satchell Creek Petroleum, LLC
Well Bellerive A #2-29
Field
County Graham State Kansas

Location: API #: 15-065-24284-00-00
NE SE NW
745 FNL & 1327 FEL
SEC 29 TWP 10S RGE 25W

Other Services
None
Elevation 2522
K.B. 2529
D.F.
G.L. 2522

Date	10/10/2023						
Run Number	One						
Type Log	CNL/CDL/ML/DIL						
Depth Driller	4100						
Depth Logger	4101						
Bottom Logged Interval	4100						
Top Logged Interval	200						
Type Fluid In Hole	Chemical						
Salinity, PPM CL	2000						
Density	9.3						
Level	Full						
Max. Rec. Temp. F	117						
Operating Rig Time	4 Hours						
Equipment -- Location	P-24 Hays						
Recorded By	Justin Trout						
Witnessed By	Sean Deenihan						
Borehole Record							
Run No.	Bit	From	To	Size	Wgt.	From	To
One	12.25	0	222	8.625	23	0	222
Two	7.875	222	4100				
Casing Record							

<<< Fold Here >>>

All interpretations are opinions based on inferences from electrical or other measurements and Midwest Wireline LLC cannot and does not guarantee the accuracy or correctness of any interpretation, and Midwest Wireline LLC will not be liable or responsible for any loss, costs, damages, or expenses incurred or sustained by anyone resulting from any interpretation made by any of our officers, agents or employees.

Comments

N/A DENOTES NOT AVAILABLE OR NON-APPLICABLE.

St. Peter, Ks, S to Rd C
2.25 W, S into

Log Measured From: Kelly Bushing 7 Ft. Above Permanent Datum

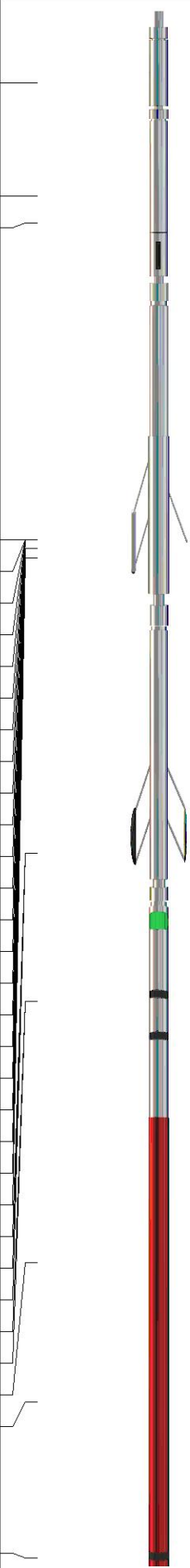
THANK YOU FOR USING MIDWEST WIRELINE LLC
785-625-3858

Your Midwest Wireline Crew

Engineer: Justin Trout
Operator:
Operator:
Operator:

This Log Record Was Witnessed By

Primary Witness: Sean Deenihan
Secondary Witness:
Secondary Witness:
Secondary Witness:

Sensor	Offset (ft)	Schematic	Description	Length (ft)	O.D. (in)	Weight (lb)	
GR	40.75		GR-M&W (107)	3.00	3.50	50.00	
CNLSC CNSSC	37.65 36.90		CNT-M&W (207)	5.00	3.50	100.00	
				MWLith-STEP LITHO (704-10) Long Litho Mandrel	8.92	5.00	250.00
LCAL	28.21						
LLW8N	28.21						
LLW7N	28.21						
LLW6N	28.21						
LLW5N	28.21						
LLW4N	28.21						
LLW3N	28.21						
LLW2N	28.21			ML-PSIML (401)	7.58	4.00	65.00
LLW1N	28.21						
LSLOCK	27.96						
LLLOCK	27.96						
PELTMPR	27.96						
LSHVNG	27.96						
LLHVNG	27.96						
LSW8N	27.71						
LSW7N	27.71						
LSW6N	27.71						
LSW5N	27.71						
LSW4N	27.71						
LSW3N	27.71						
LSW2N	27.71						
LSW1N	27.71						
MCAL	19.58		DIL-M&W (507)	18.25	3.50	220.00	
MI	19.58						
MN	19.58						
RLL3F	15.50						
RLL3	15.50						
CILD	8.33						
CILM	4.50						
SP	0.20						

Dataset: satchell creek_bellerive a #2-29.db: field/well/STKML/pass3.1
 Total length: 42.75 ft
 Total weight: 685.00 lb
 O.D.: 5.00 in

Log Variables

DatabaseC:\ProgramData\Warrion\Data\satchell creek_bellerive a #2-29.db
 Dataset field/well/STKML/pass3.1/_vars_

Top - Bottom

BOREID in 7.875	BOTTEMP degF 117	CASEOD in 5.5	CASETHCK in 0	FLUIDDEN g/cc 1	MATRXDEN g/cc 2.71	NPORSEL Limestone	PERFS No
SNDERR mmho/m 0	SNDERRM mmho/m -5	SPSHIFT mV 158	SRFTEMP degF 74	SZCOR Off	TDEPTH ft 4101		

Variable Description

BOREID : Borehole I.D.
 BOTTEMP : Bottom Hole Temperature
 CASEOD : Casing O.D.
 CASETHCK : Casing Thickness
 FLUIDDEN : Fluid Density
 MATRXDEN : Matrix Density
 NPORSEL : Neutron Porosity Curve Select

PERFS : Perforation Flag
 SNDERR : Deep Sonde Error Correction
 SNDERRM : Medium Sonde Error Correction
 SPSHIFT : S.P. Baseline Offset
 SRFTEMP : Surface Temperature
 SZCOR : CN Size Cor. ?
 TDEPTH : Total Depth

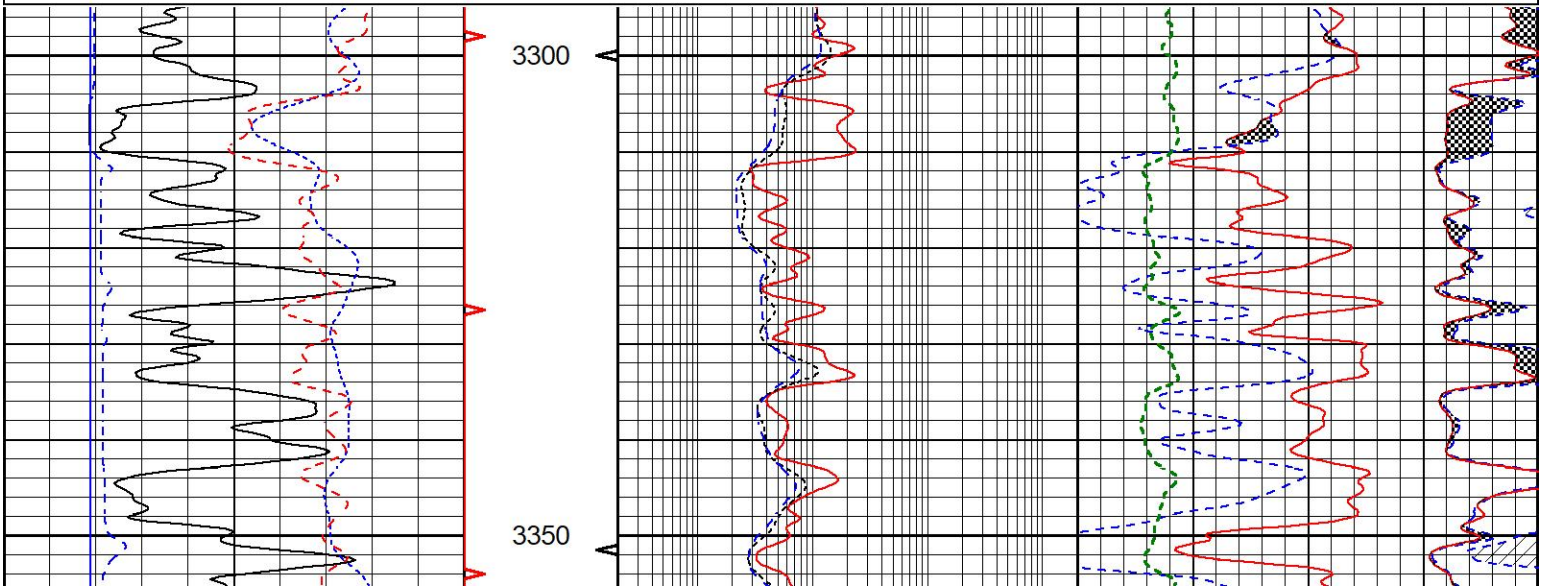


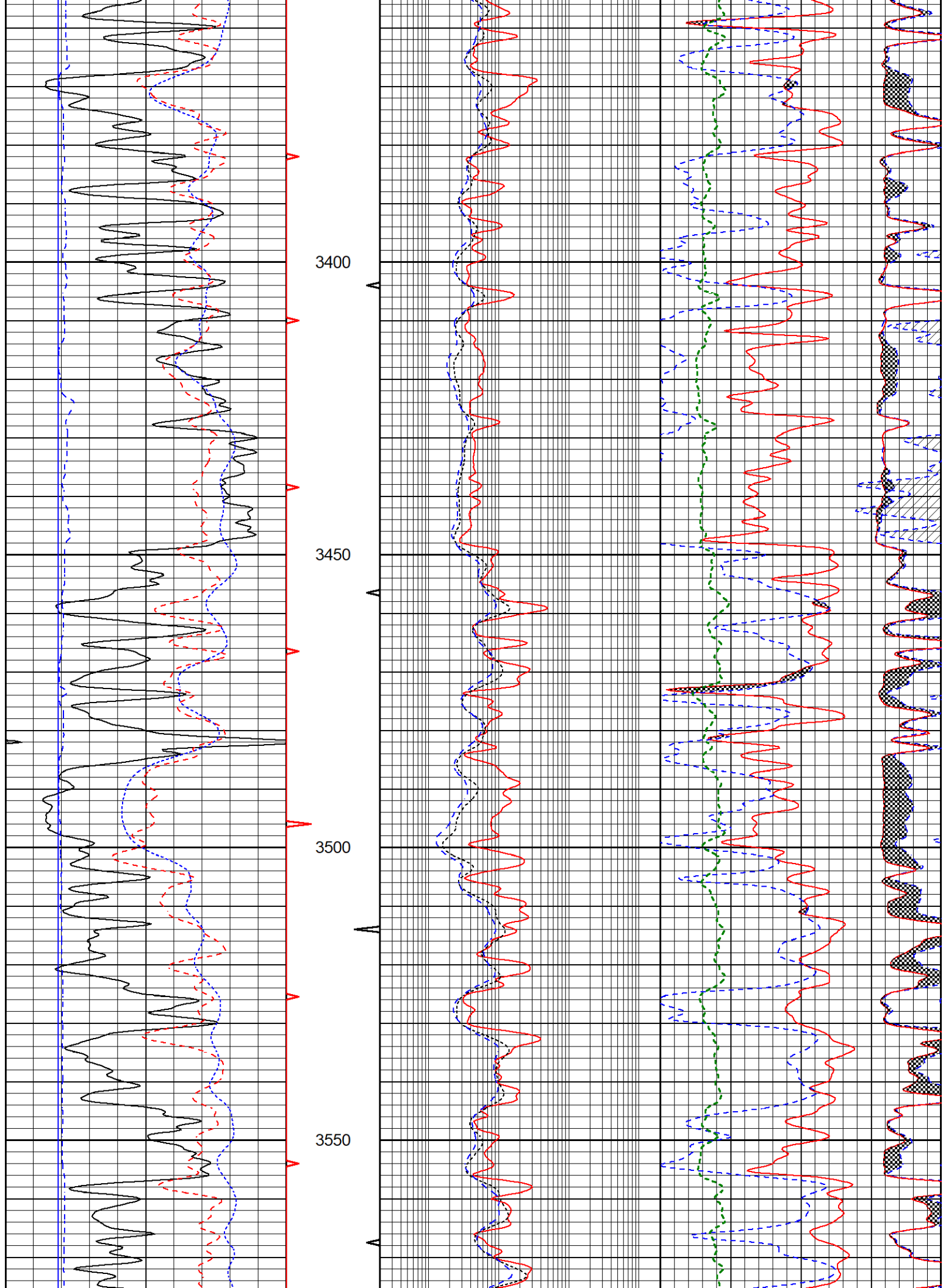
DETAIL SECTION

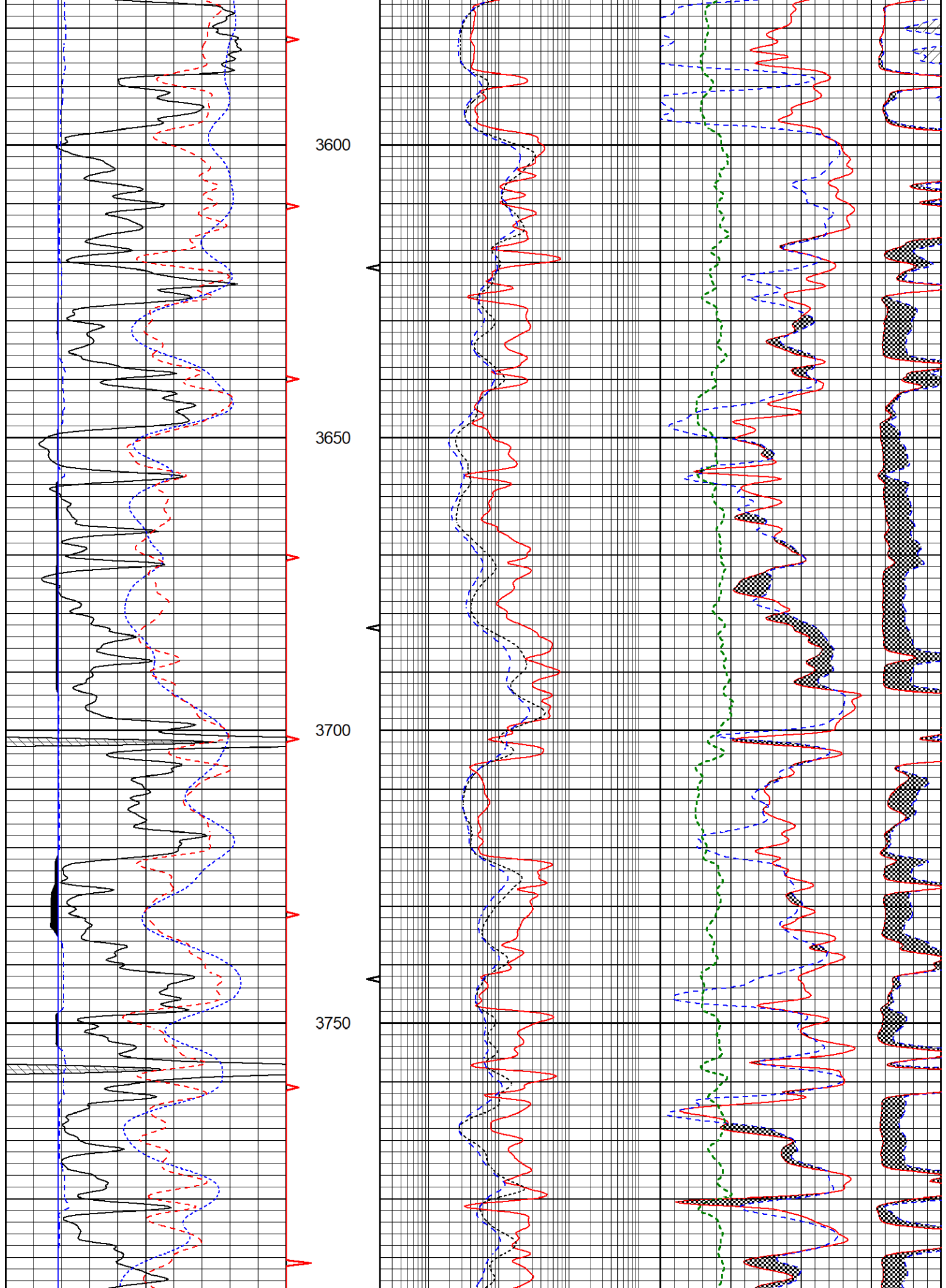
MAIN PASS

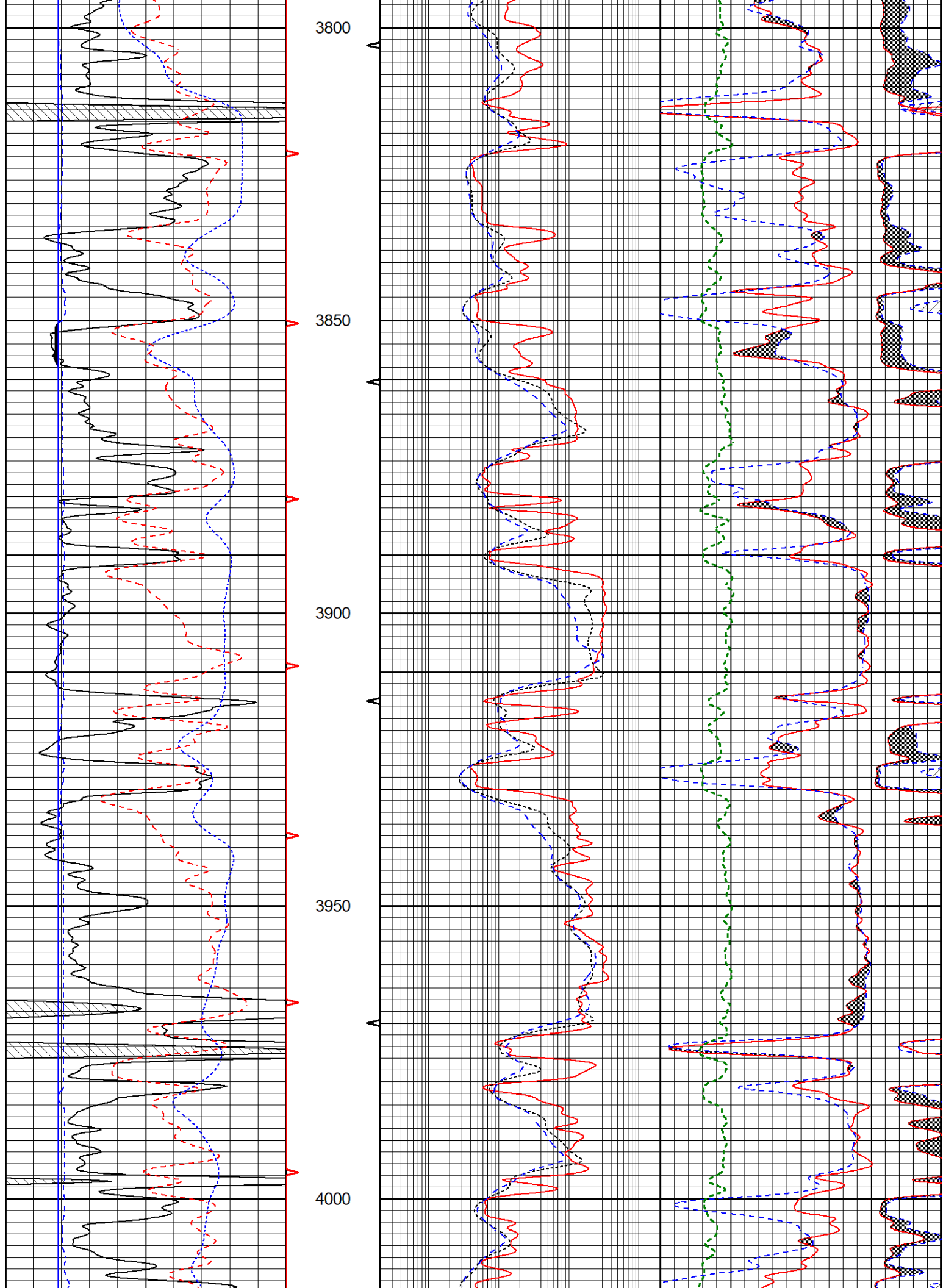
Database File satchell creek_bellerive a #2-29.db
 Dataset Pathname STKML/pass3.1
 Presentation Format SUBFF3~1
 Dataset Creation Tue Oct 10 17:48:18 2023
 Charted by Depth in Feet scaled 1:240

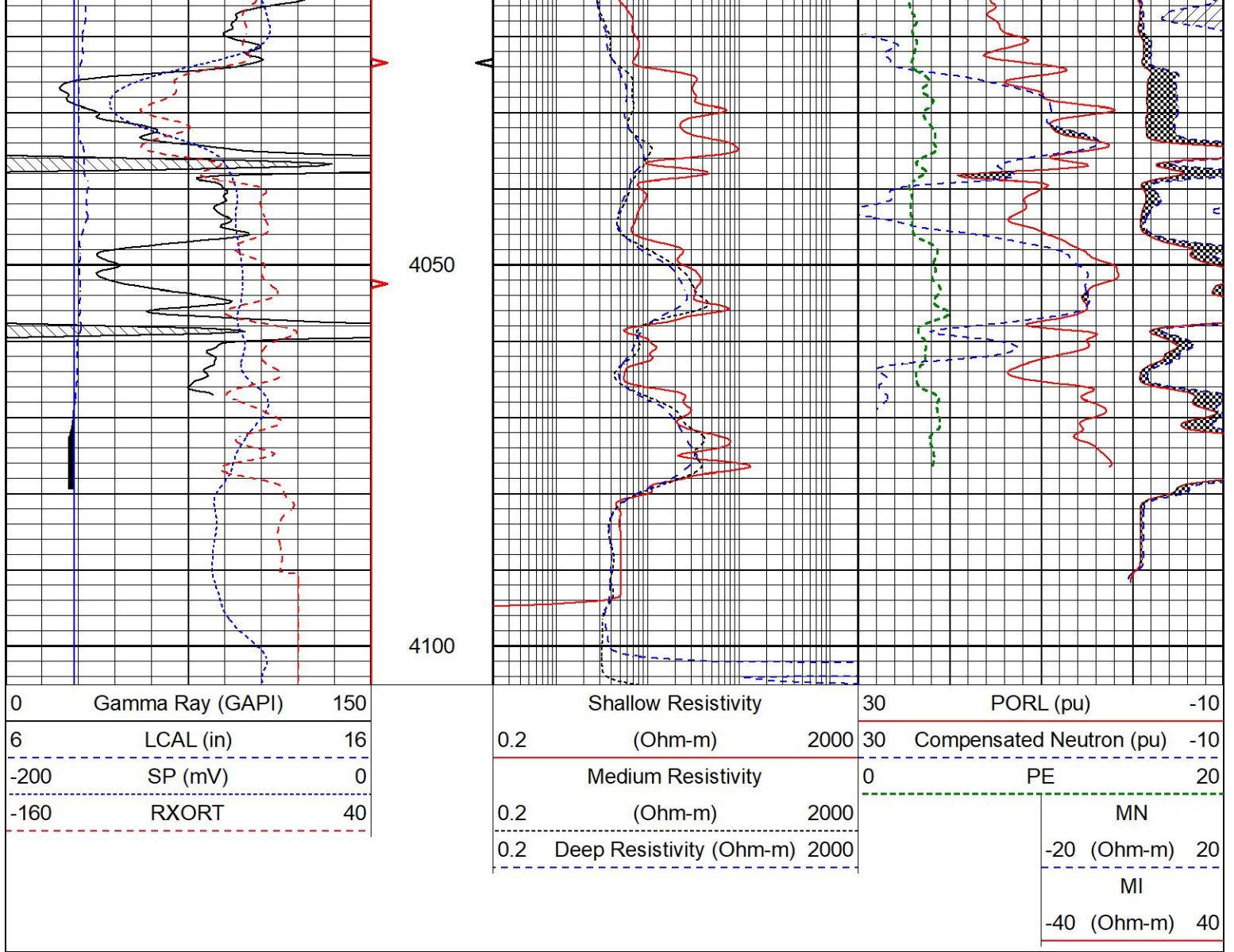
0	Gamma Ray (GAPI)	150	Shallow Resistivity	30	PORL (pu)	-10
6	LCAL (in)	16	0.2 (Ohm-m)	2000	30 Compensated Neutron (pu)	-10
-200	SP (mV)	0	Medium Resistivity	0	PE	20
-160	RXORT	40	0.2 (Ohm-m)	2000		
			0.2 Deep Resistivity (Ohm-m)	2000		
					MN	
					-20 (Ohm-m)	20
					MI	
					-40 (Ohm-m)	40







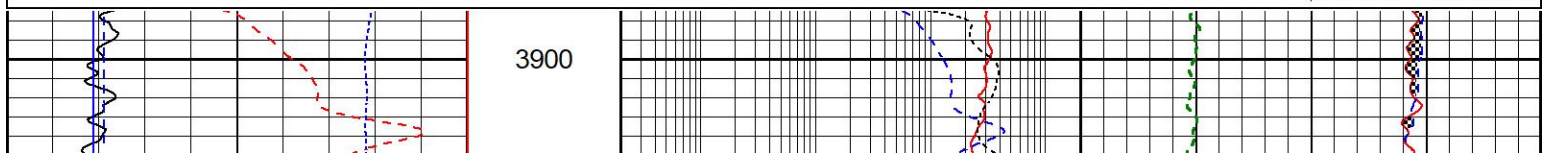
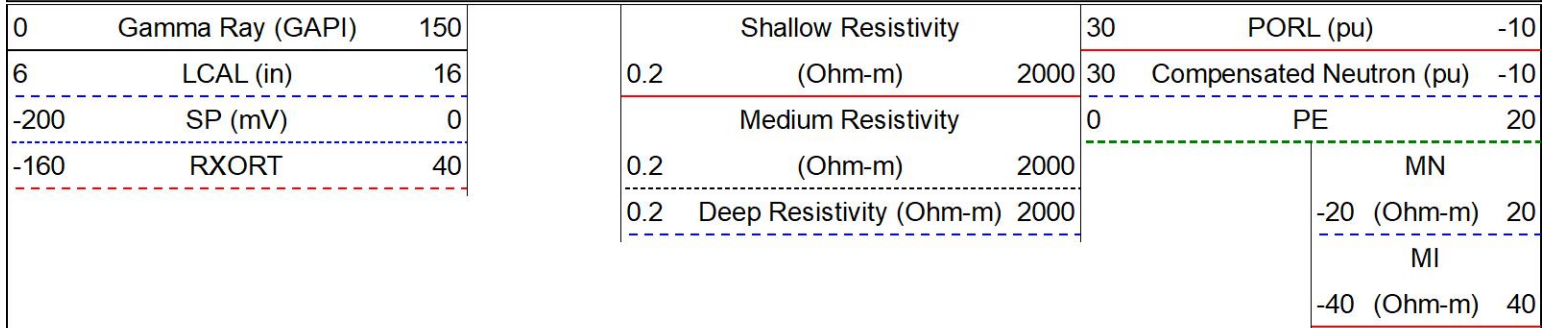


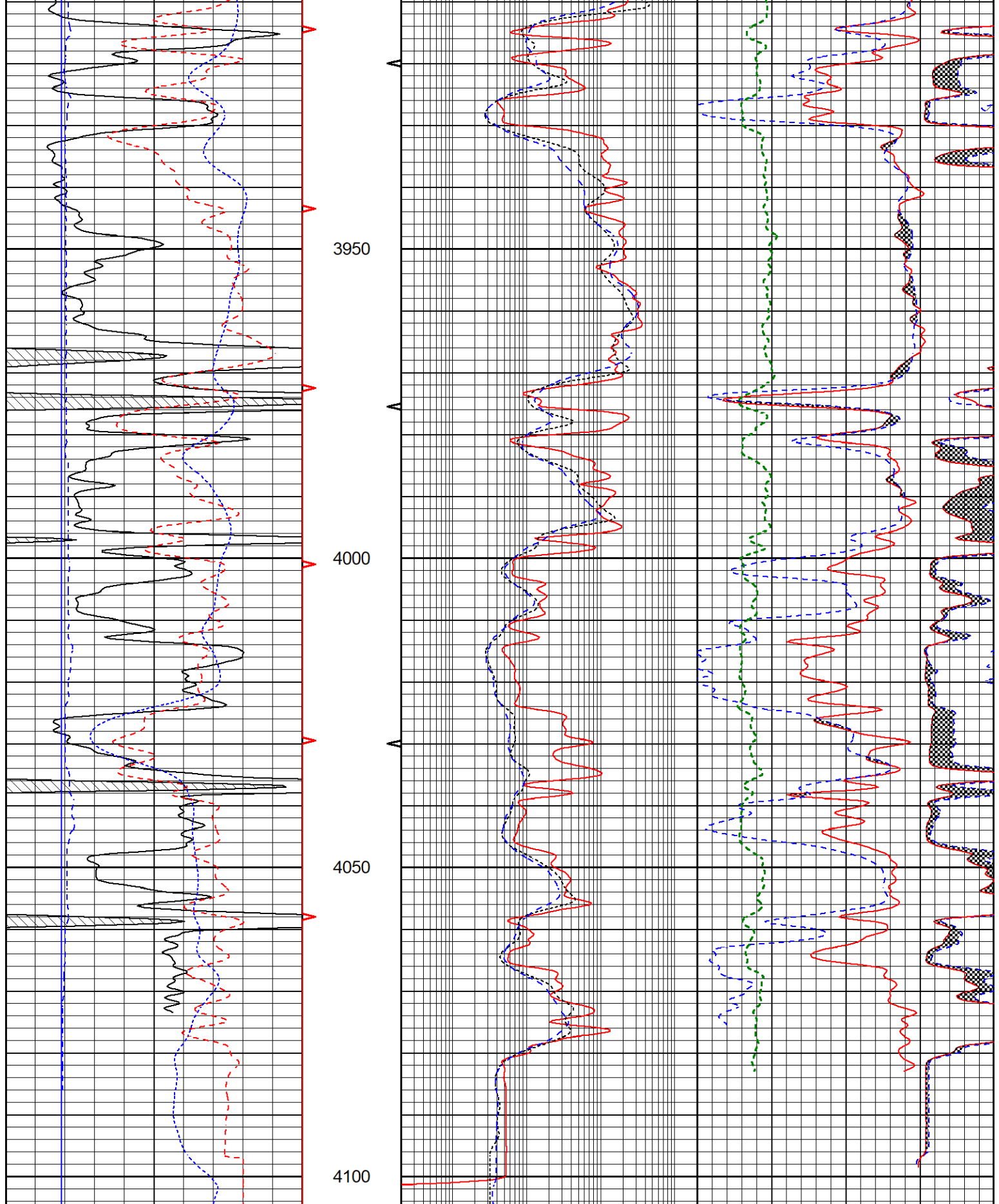


REPEAT SECTION

REPEAT PASS

Database File satchell creek_bellerive a #2-29.db
 Dataset Pathname STKML/pass2.1
 Presentation Format SUBFF3~1
 Dataset Creation Tue Oct 10 17:20:55 2023
 Charted by Depth in Feet scaled 1:240





0	Gamma Ray (GAPI)	150
6	LCAL (in)	16
-200	SP (mV)	0
-160	RXORT	40

0.2	Shallow Resistivity	2000
	(Ohm-m)	
0.2	Medium Resistivity	2000
	(Ohm-m)	
0.2	Deep Resistivity (Ohm-m)	2000

30	PORN (pu)	-10
30	Compensated Neutron (pu)	-10
0	PE	20
	MN	
-20	(Ohm-m)	20

SS: 2.6000 2.6000 g/cc 0.240
 LS: 2.6000 2.6000 g/cc 0.236
 Magnesium:
 SS: 1.6800 1.6800 g/cc 2.5700 2.5700 0.210
 LS: 1.6800 1.6800 g/cc 2.5700 2.5700 0.184
 Aluminum+Iron:
 SS: 6.1800 0.228
 LS: 6.1800 0.206

Before Survey
 Performed: Wed Feb 9 13:15:42 2022
 SS: 0 0 0 0 0 0 0 0 cps
 LS: 1370 1580 3705 3037 48 80 50 4 cps

 After Survey
 Performed: Wed Feb 9 13:16:02 2022
 SS: 0 0 0 0 0 0 0 0 cps
 LS: 1400 1600 3800 3100 60 100 70 6 cps

Caliper: Reference: Reading:
 Small Ring: 6.0 in 0.2
 Large Ring: 15.0 in 0.8
 Gain: 16.161
 Offset: 1.230

Compensated Neutron Calibration Report

Serial Number: 207
 Tool Model: M&W

CALIBRATION

Detector	Readings	Target	Normalization
Short Space	6240.00 cps	1000.00 cps	1.6025
Long Space	460.00 cps	1000.00 cps	1.9500

PRE-SURVEY VERIFICATION

	Detector	Readings	Measured	Target
1)	Short Space	cps		
	Long Space	cps	pu	pu
2)	Short Space	cps		
	Long Space	cps	pu	
3)	Short Space	cps		
	Long Space	cps	pu	

POST-SURVEY VERIFICATION

	Detector	Readings	Measured	Target
1)	Short Space	cps		
	Long Space	cps	pu	pu
2)	Short Space	cps		
	Long Space	cps	pu	pu
3)	Short Space	cps		
	Long Space	cps	pu	pu

Gamma Ray Calibration Report

Serial Number: 107
 Tool Model: M&W
 Performed: Fri Dec 3 15:10:46 2021

Performed:

11/20/2021 10:40

Calibrator Value:	500.0	GAPI
Background Reading:	24.0	cps
Calibrator Reading:	637.0	cps
Sensitivity:	0.5500	GAPI/cps



Company	Satchell Creek Petroleum, LLC
Well	Bellerive A #2-29
Field	
County	Graham
State	Kansas