

HALLIBURTON

ARRAY COMPENSATED TRUE RESISTIVITY LOG 5 INCH

COMPANY		MERIT ENERGY COMPANY, LLC	
WELL		WENU 604	
FIELD/BLOCK		EUBANK NORTH	
COUNTY		HASKELL	
STATE		KANSAS	
Permanent Datum	GL	Sect. 04	Twp. 28S
Log measured from	KB		Rge. 34SW
Drilling measured from	KB		Elev. 3076.3 ft
Date	28-Mar-22		D.F. 3087.3 ft
Run No.	ONE		G.L. 3076.3 ft
Depth - Driller	5637.0 ft		
Depth - Logger	5638.0 ft		
Bottom - Logged Interval	5636.0 ft		
Top - Logged Interval	1776.0 ft		
Casing - Driller	8.625 in	@	
Casing - Logger	1776.0 ft	@	
Bit Size	7.875 in	@	
Type Fluid in Hole	Water Based Mud		
Density	9.2 ppg	56.00	s/qt
PH	9.00 pH	6.0	optm
Source of Sample	MUD PIT		
Rm @ Meas. Temperature	1.48 ohmm	@	70.30 degF
Rmf @ Meas. Temperature	1.44 ohmm	@	70.30 degF
Rmc @ Meas. Temperature	0.91 ohmm	@	70.30 degF
Source Rmf	CALC		
Rm @ BHT	0.85 ohmm	@	127.1 degF
Time Since Circulation	03:24 hr		
Time on Bottom	28-Mar-22 14:35		
Max. Rec. Temperature	127.10 degF	@	5639.0 ft
Equipment	12128583	ALVARADO	
Recorded By	K. BIJERGA		M. ABUEL GASIM
Witnessed By	KRISTIN ROBINSON		

Fold here

Sales Order Number: 907759235		API No.: 1508122246000		PGM Version: WL INSITE R6.4.20 (Build 2)	
CHANGE IN MUD TYPE OR ADDITIONAL SAMPLE			RESISTIVITY SCALE CHANGES		
Date	Sample No.		Type Log	Depth	Scale Up Hole
Depth-Driller					Scale Down Hole
Type Fluid in Hole					
Density	Viscosity				
Ph	Fluid Loss				
Source of Sample			RESISTIVITY EQUIPMENT DATA		
Rm @ Meas. Temp	@	@	Run No.	Tool Type & No.	Pad Type
Rmf @ Meas. Temp.	@	@	ONE	ACRT	NONE
Rmc @ Meas. Temp.	@	@		10947895	
Source Rmf	Rmc				
Rm @ BHT	@	@			
Rmf @ BHT	@	@			
Rmc @ BHT	@	@			
EQUIPMENT DATA					
GAMMA		ACOUSTIC		DENSITY	
Run No.	ONE	Run No.		Run No.	
Serial No.	11172469	Serial No.		Serial No.	
Model No.	GTET	Model No.		Model No.	
Diameter	3.625"	No. of Cent.		Diameter	
Detector Model No.	GTET	Spacing		Log Type	
Type	SCINT			Source Type	
Length	8"	LSA [Y/N]		Serial No.	
Distance to Source	10'	FWDA [Y/N]		Strength	
LOGGING DATA					

GENERAL			GAMMA		ACOUSTIC		DENSITY		NEUTRON		
Run No.	Depth		Speed	Scale		Scale		Matrix	Scale		Matrix
	From	To	ft/min	L	R	L	R		L	R	
ONE	5638'	1776'	REC	0 gapi	150 gapi						

DIRECTIONAL INFORMATION

Maximum Deviation @ KOP @

Remarks: FIRST LOG ON WELL, POSITIVE DEPTH CONTROL APPLIED
 ANNULAR HOLE VOLUME CALCULATED FOR 5.5 INCH CASING
 LOGGING INTERVALS AND SERVICES ARE AS PER CUSTOMER REQUEST
 TOOLS RAN IN COMBINATION AS PER TOOLSTRING DIAGRAM
 CHLORIDES REPORTED AT 3,000
 LCM REPORTED AT 22 lb/bbl

CREW: C. HERRERA, B. EZEKWU

*****THANK YOU FOR CHOOSING HALLIBURTON ENERGY SERVICES*****

HALLIBURTON DOES NOT GUARANTEE THE ACCURACY OF ANY INTERPRETATION OF THE LOG DATA, CONVERSION OF LOG DATA TO PHYSICAL ROCK PARAMETERS OR RECOMMENDATIONS WHICH MAY BE GIVEN BY HALLIBURTON PERSONNEL OR WHICH APPEAR ON THE LOG OR IN ANY OTHER FORM. ANY USER OF SUCH DATA, INTERPRETATIONS, CONVERSIONS, OR RECOMMENDATIONS AGREES THAT HALLIBURTON IS NOT RESPONSIBLE EXCEPT WHERE DUE TO GROSS NEGLIGENCE OR WILLFUL MISCONDUCT, FOR ANY LOSS, DAMAGES, OR EXPENSES RESULTING FROM THE USE THEREOF.

HALLIBURTON



Plot Time: 28-Mar-22 17:05:14
 Plot Range: 1765 ft to 5649.67 ft
 Data: 03-28-MERITWell Based\DAQ-0001-004\
 Plot File: \\-LOCAL-103-28-MERIT\0001 RWCH-GTET-DSNT-SDLT-BSAT-ACRT\ACRT5\ACRT_5inch_main

5 INCH MAIN LOG

5 INCH MAIN LOG

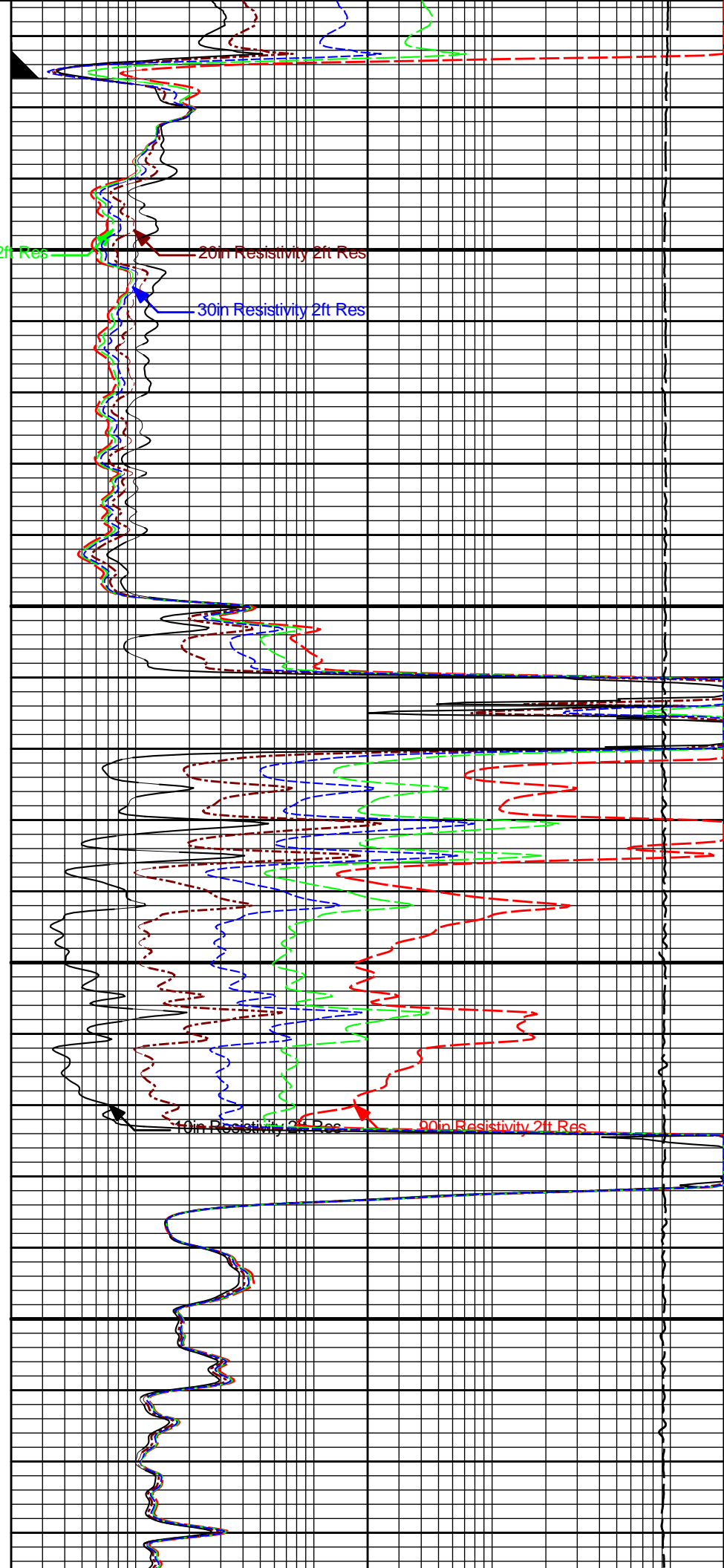
	0.2	10in Resistivity 2ft Res	2K
		ohmm	
	0.2	20in Resistivity 2ft Res	2000
		ohmm	
	0.2	30in Resistivity 2ft Res	2000
	ohm-metre		
0.2	60in Resistivity 2ft Res	2000	
	ohmm		
0.2	90in Resistivity 2ft Res	2K	
	ohmm		
SP			
-]20[+			
0	Gamma API	150	
	api		
		15K	Tension
			0
			pounds

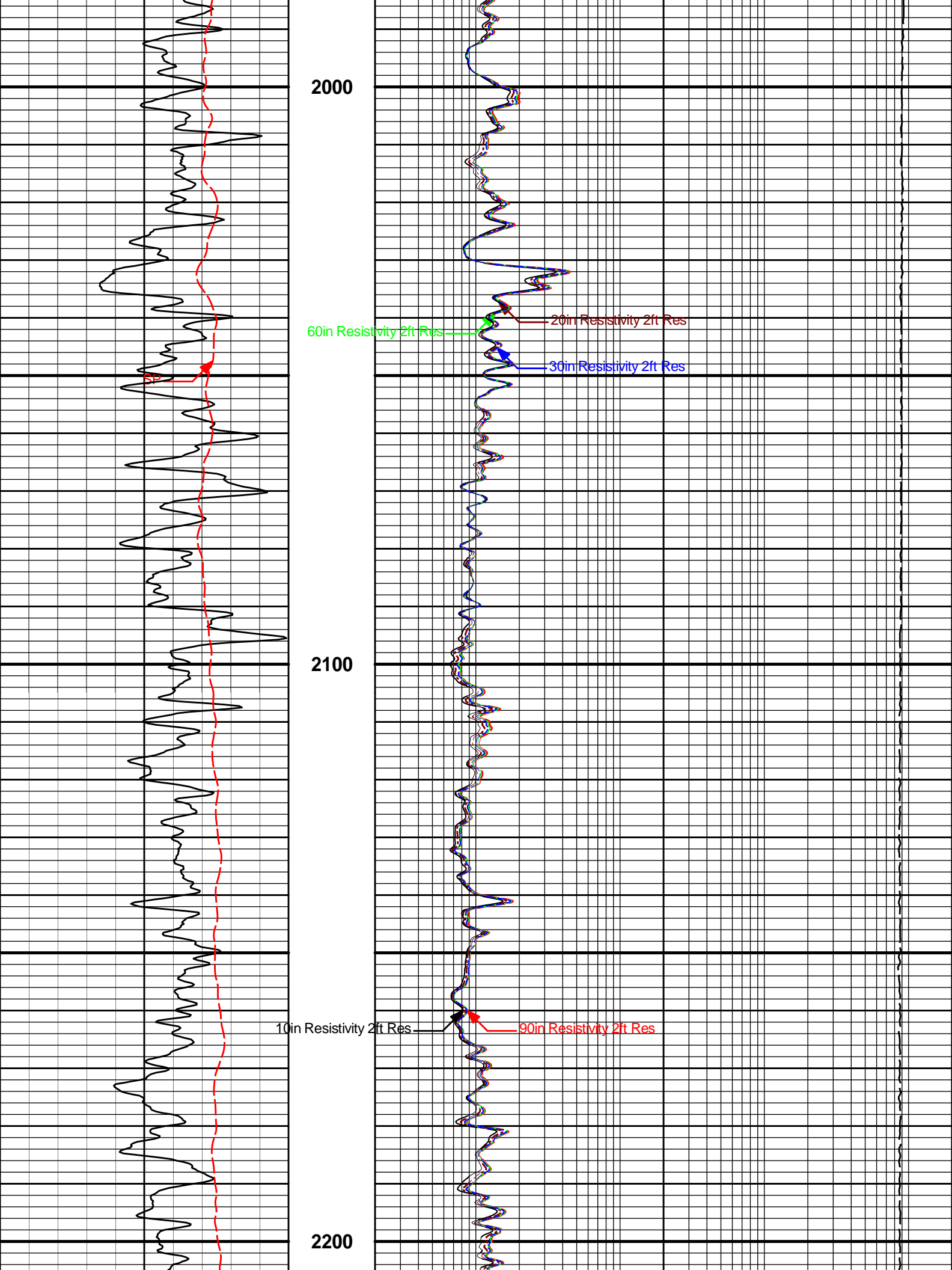


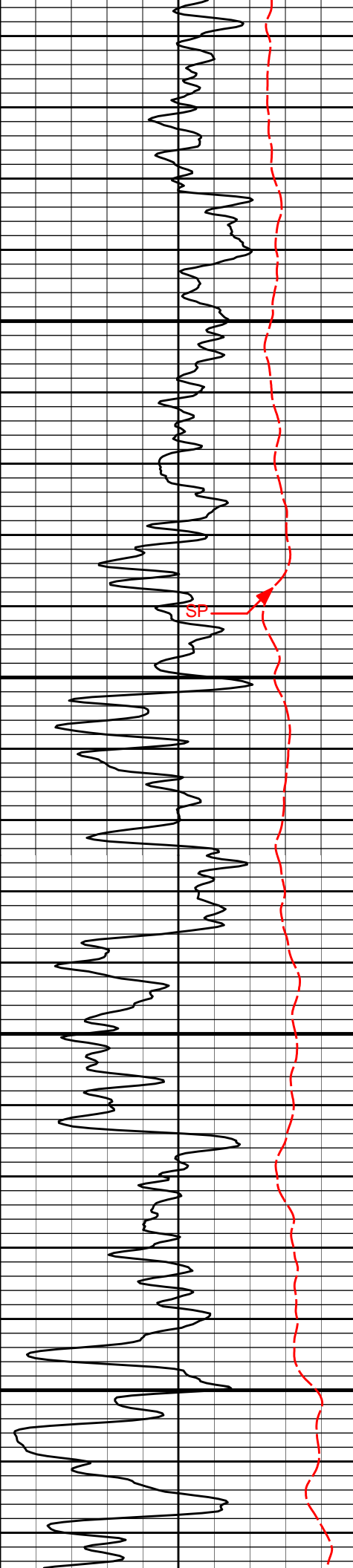
CSG

60in Resistivity 2ft Res

1900







2300

2400

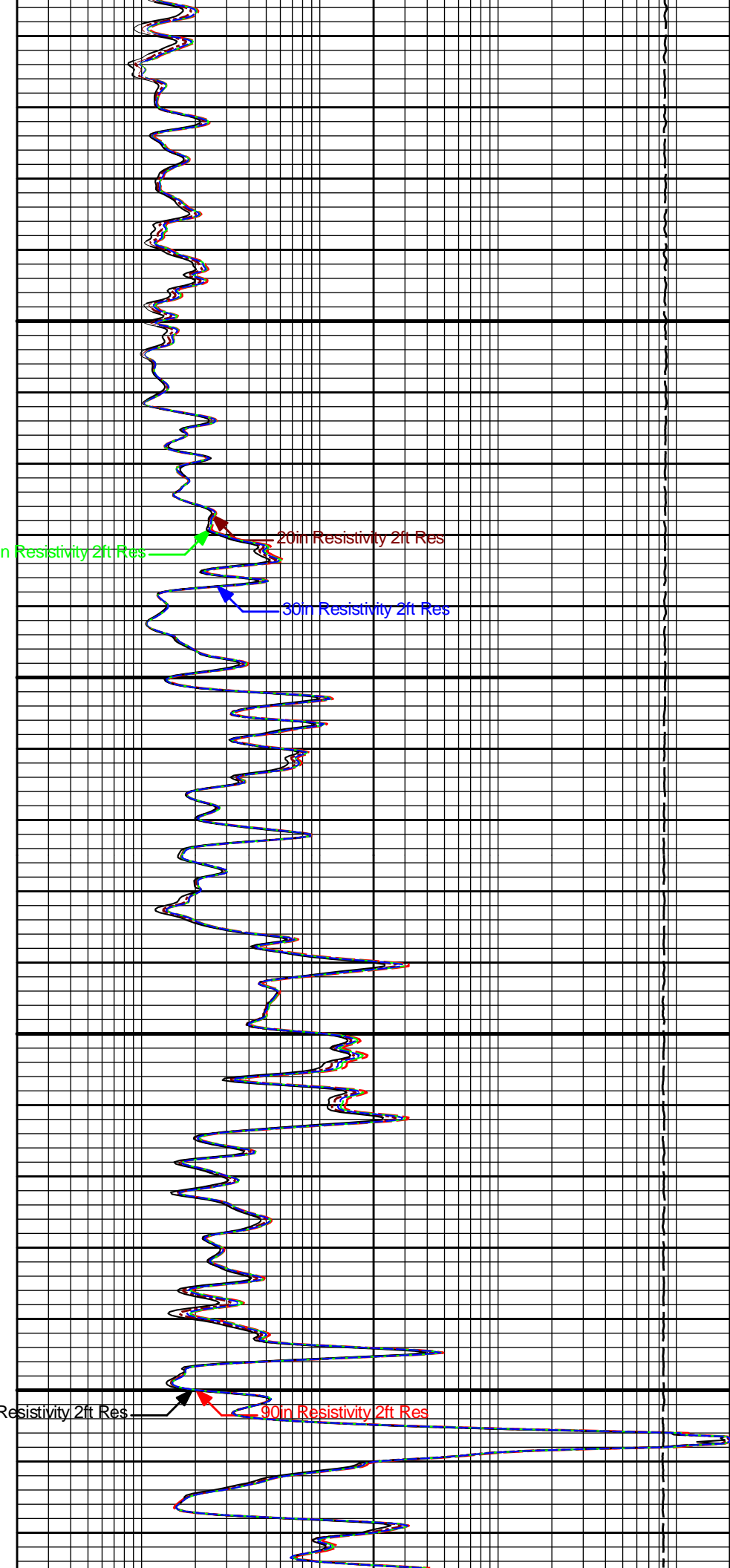
60in Resistivity 2ft Res

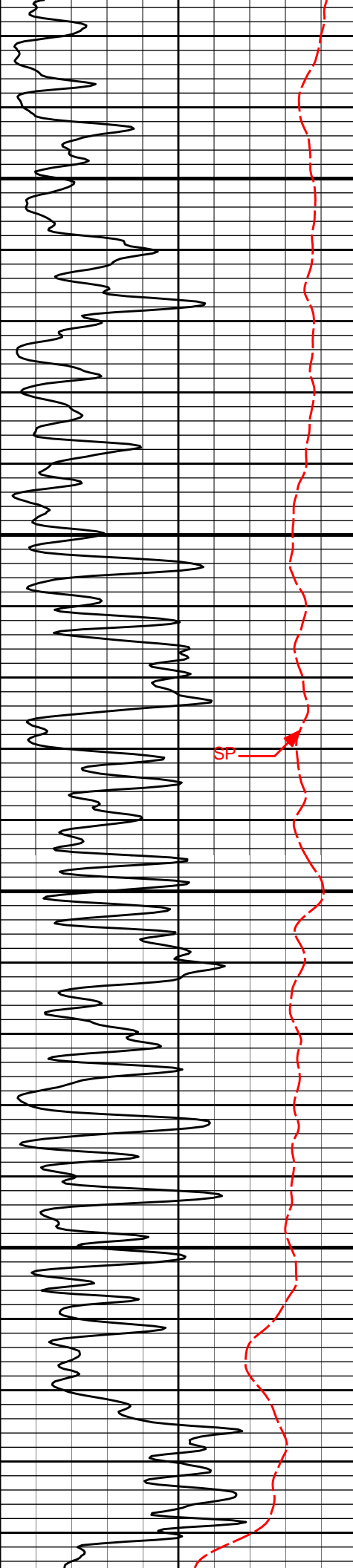
20in Resistivity 2ft Res

30in Resistivity 2ft Res

10in Resistivity 2ft Res

90in Resistivity 2ft Res





2500

2600

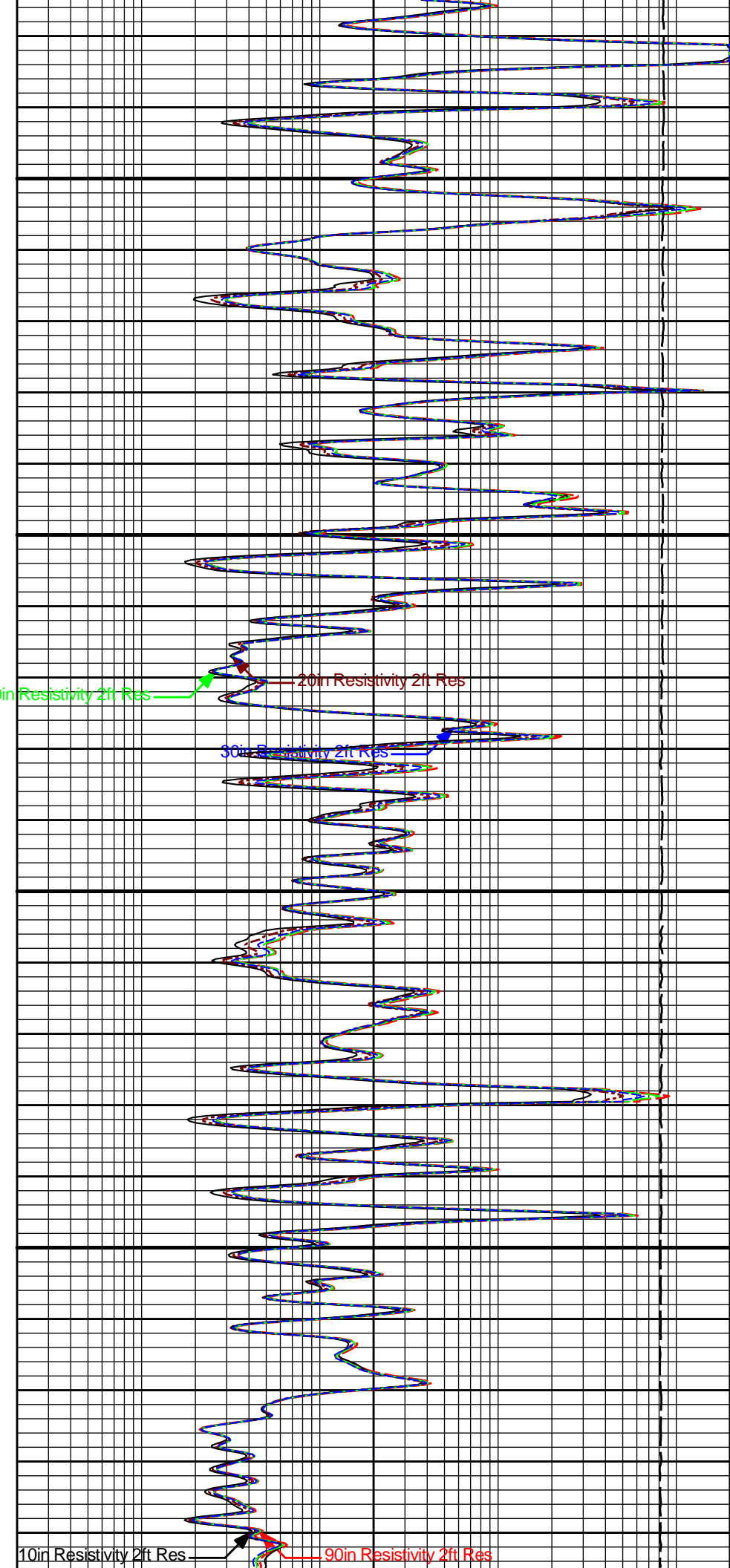
60in Resistivity 2ft Res

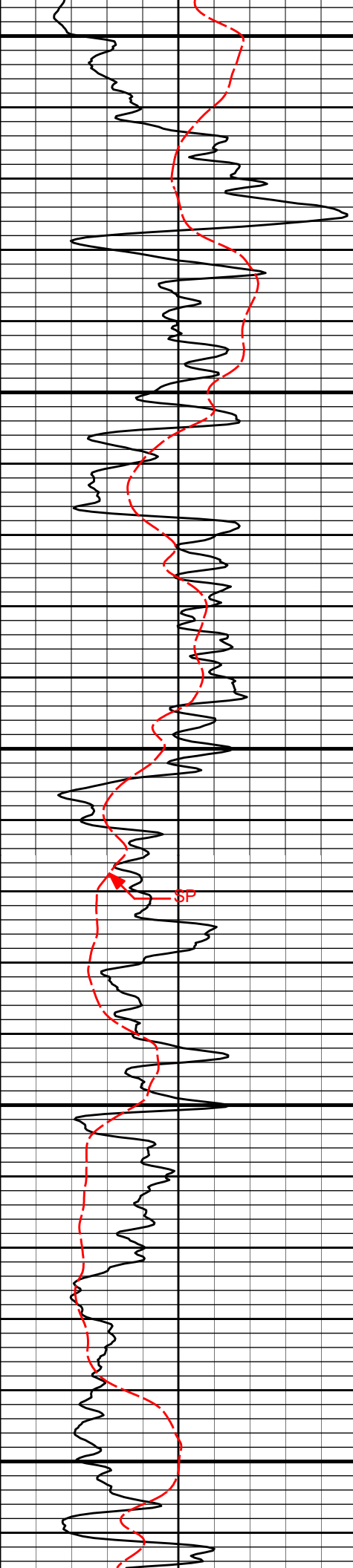
20in Resistivity 2ft Res

30in Resistivity 2ft Res

10in Resistivity 2ft Res

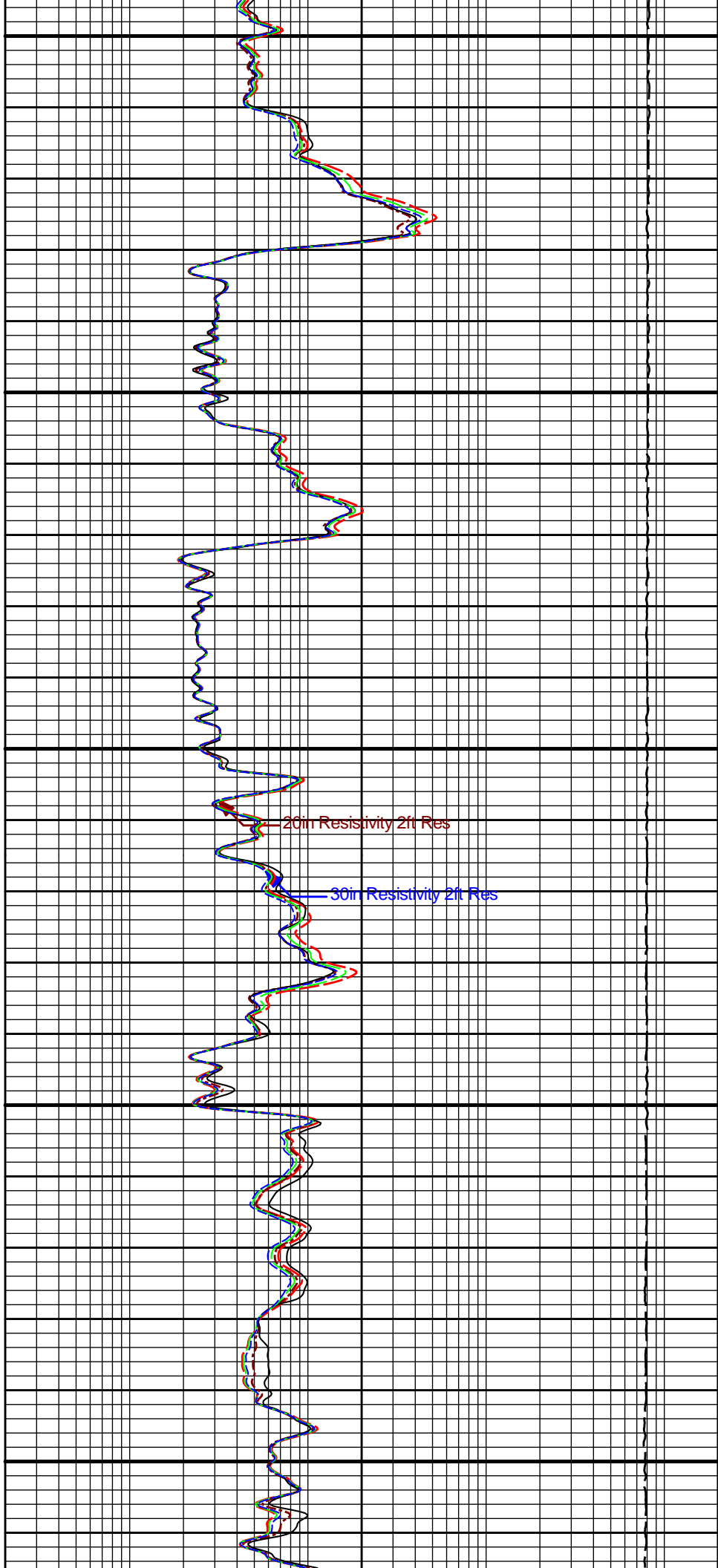
90in Resistivity 2ft Res





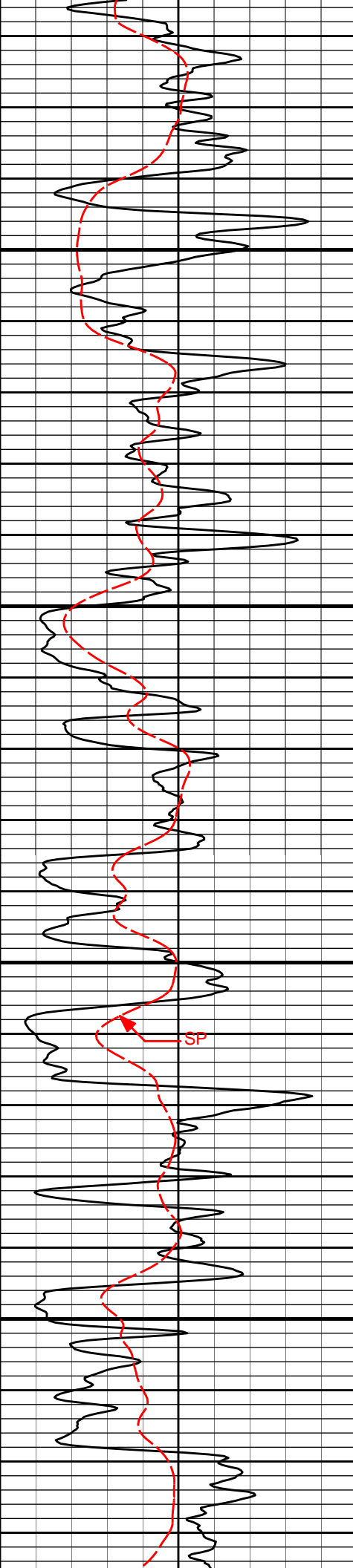
2700

2800



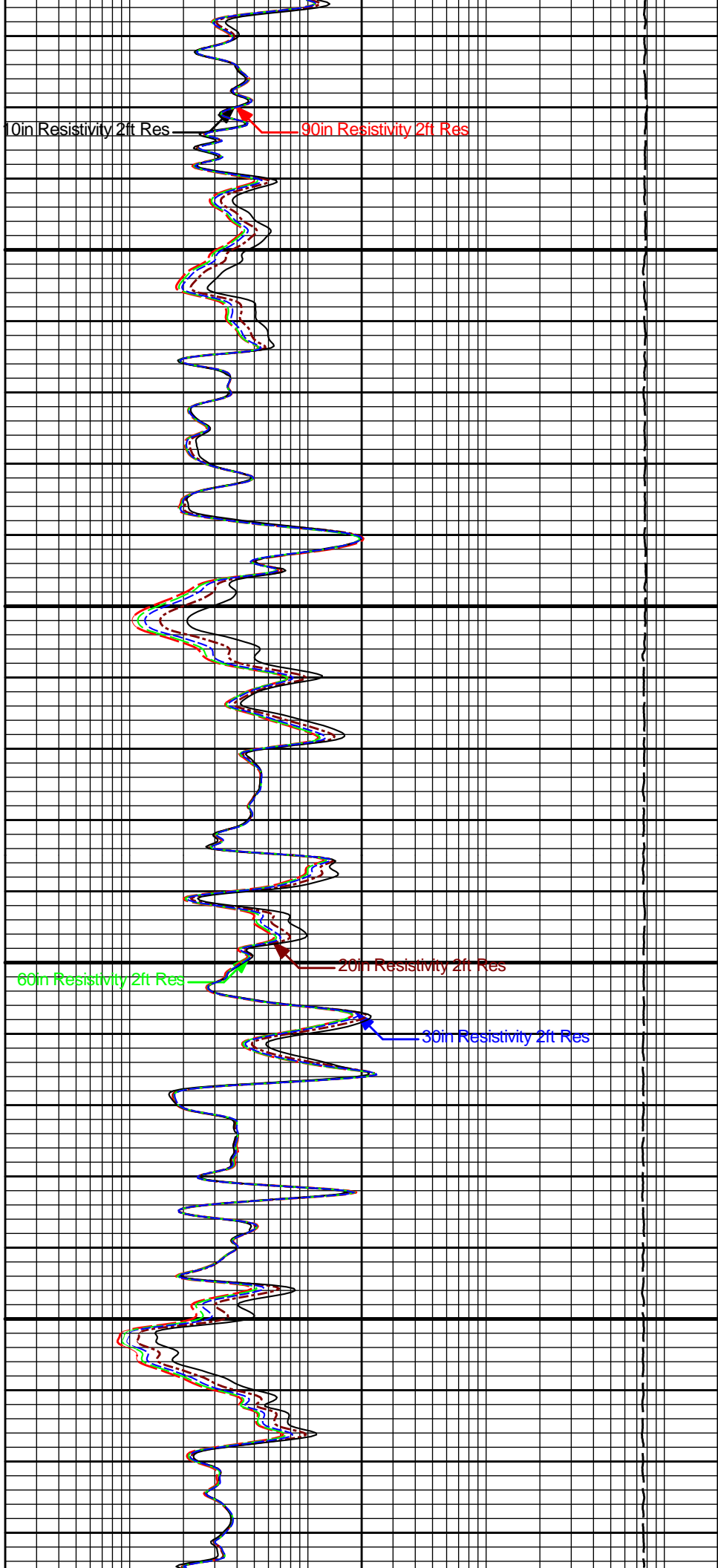
20in Resistivity 2ft Res

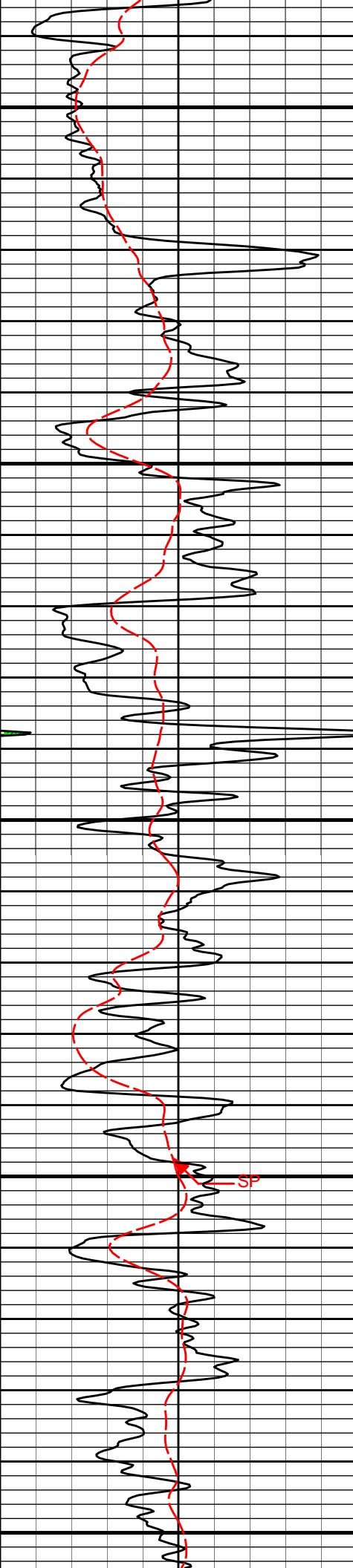
30in Resistivity 2ft Res



2900

3000

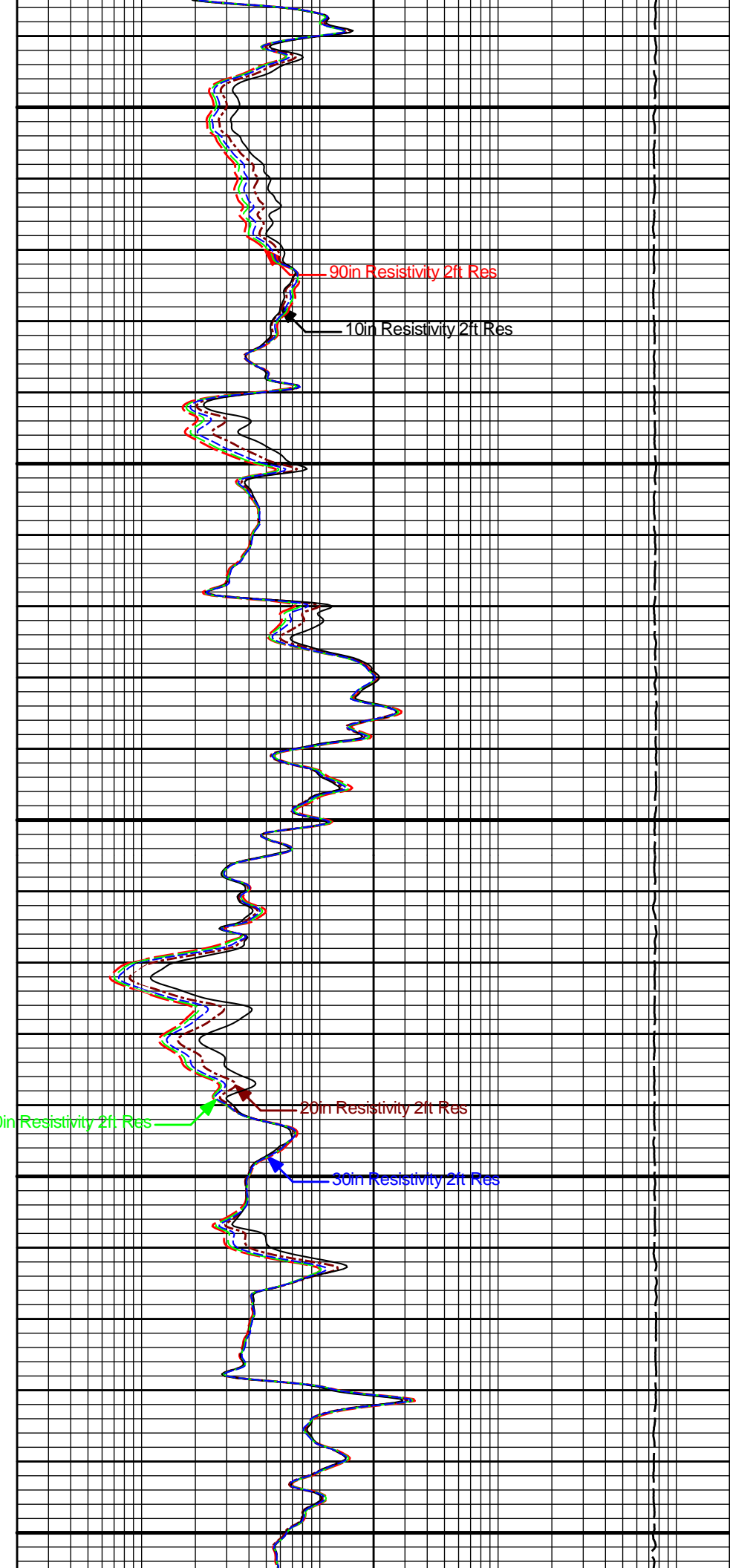




3100

3200

3300



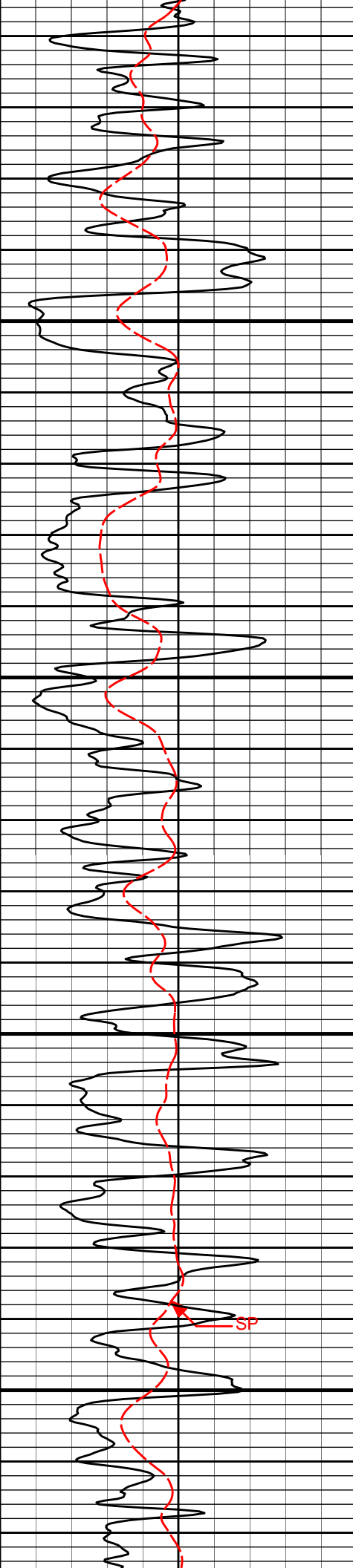
90in Resistivity 2ft Res

10in Resistivity 2ft Res

60in Resistivity 2ft Res

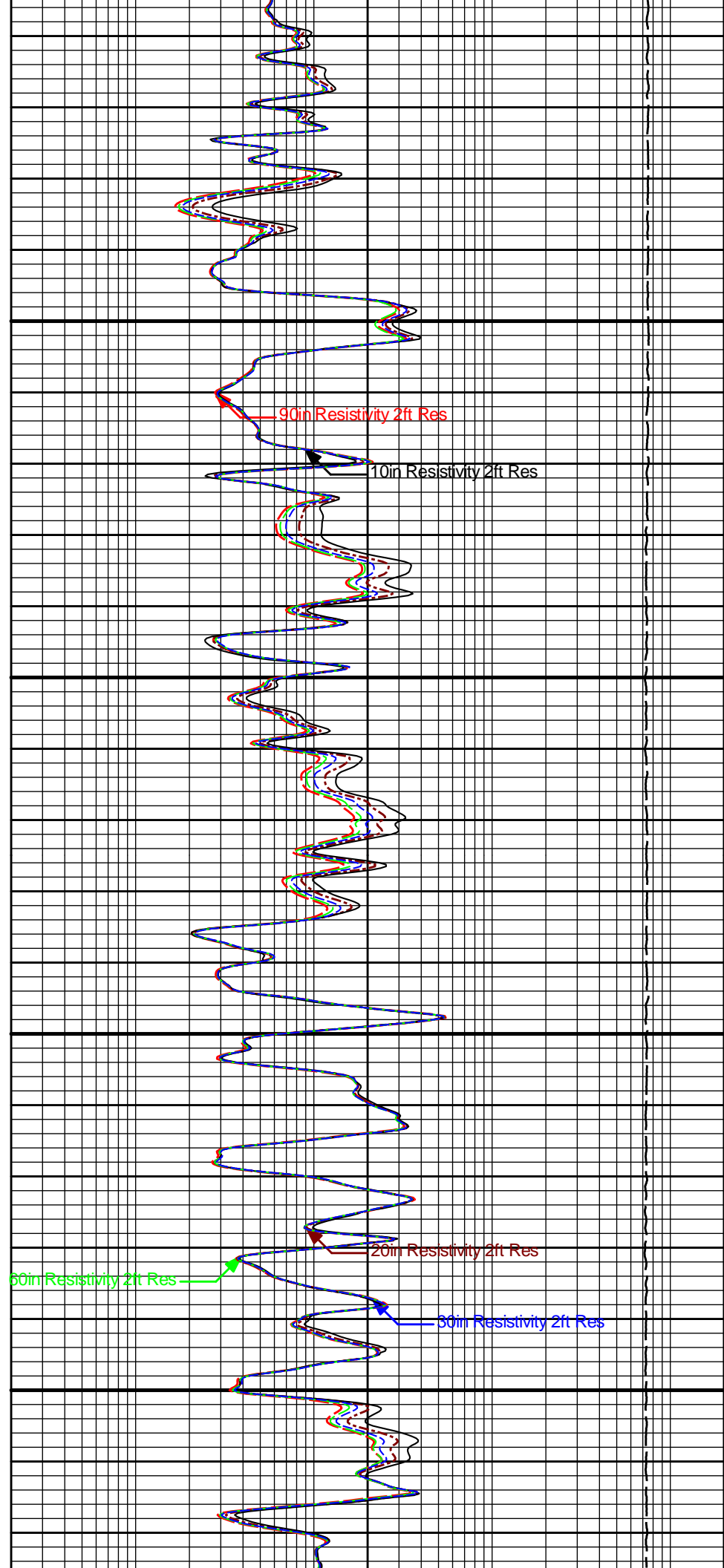
20in Resistivity 2ft Res

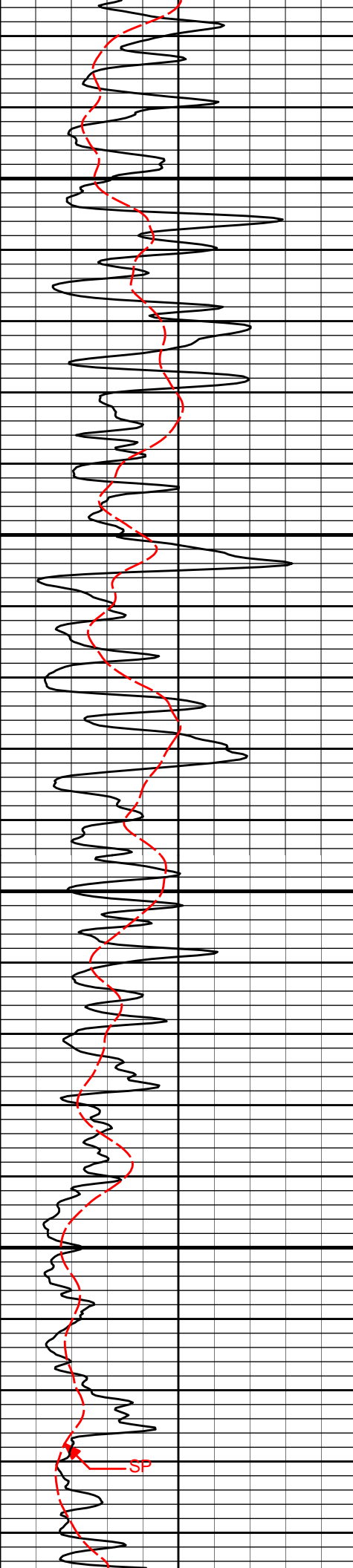
30in Resistivity 2ft Res



3400

3500

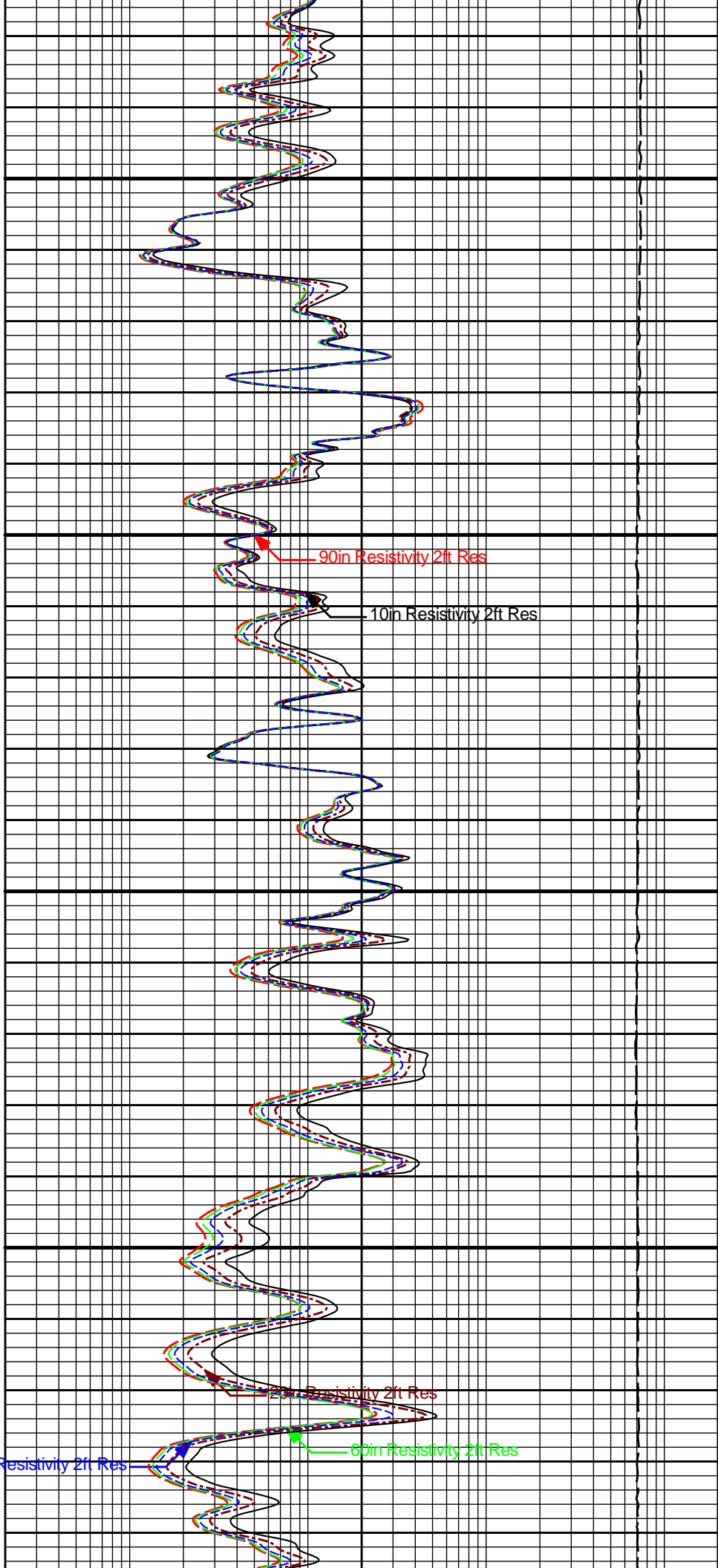




3600

3700

30in Resistivity 2ft Res

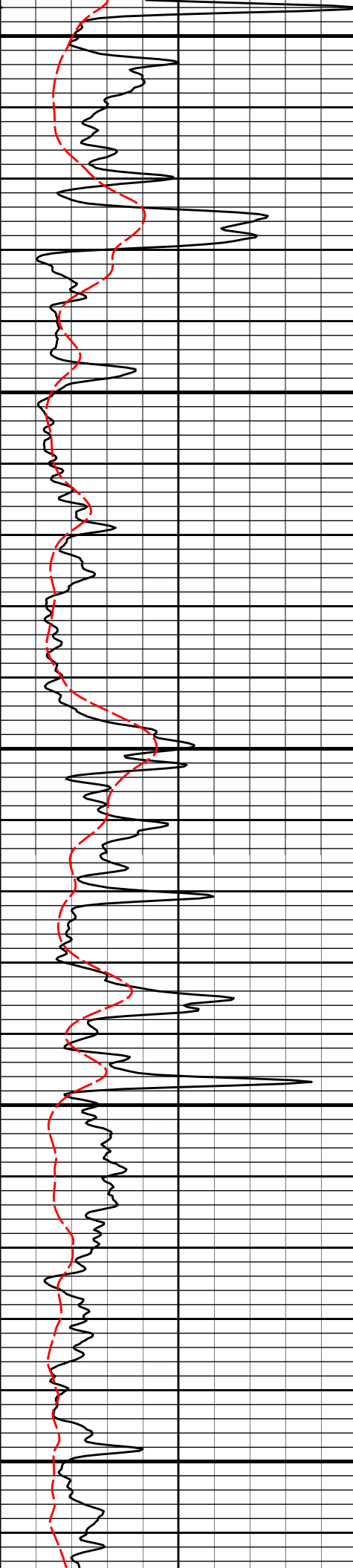


90in Resistivity 2ft Res

10in Resistivity 2ft Res

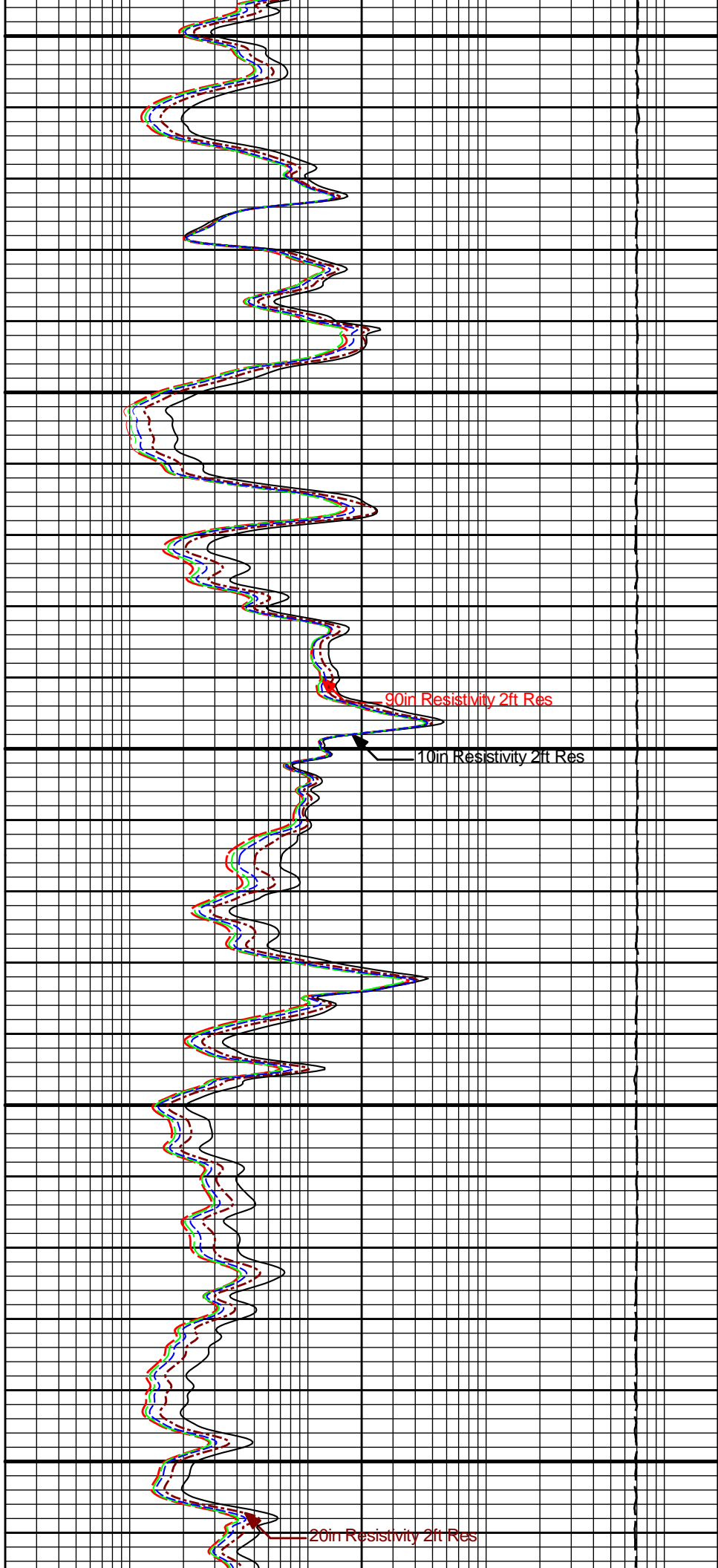
Resistivity 2ft Res

60in Resistivity 2ft Res



3800

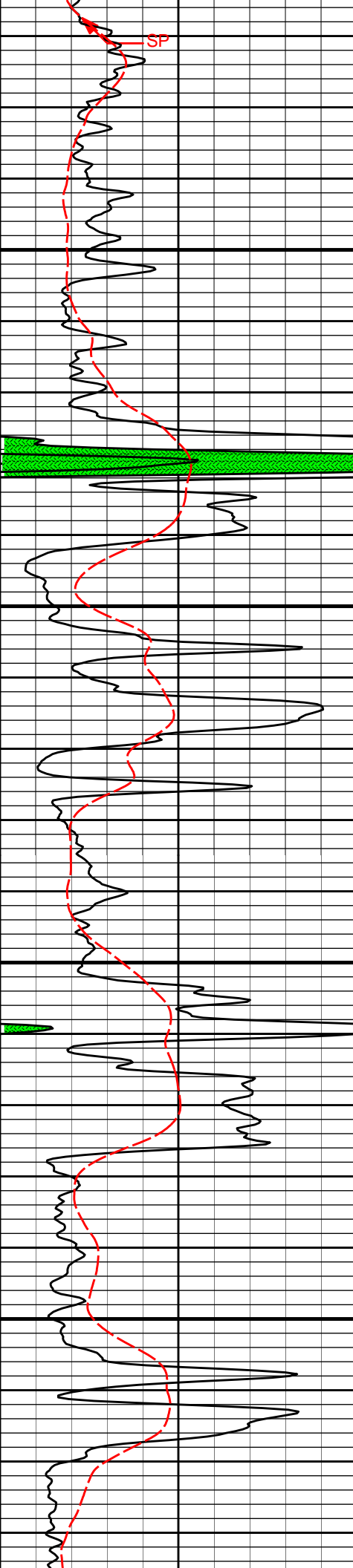
3900



90in Resistivity 2ft Res

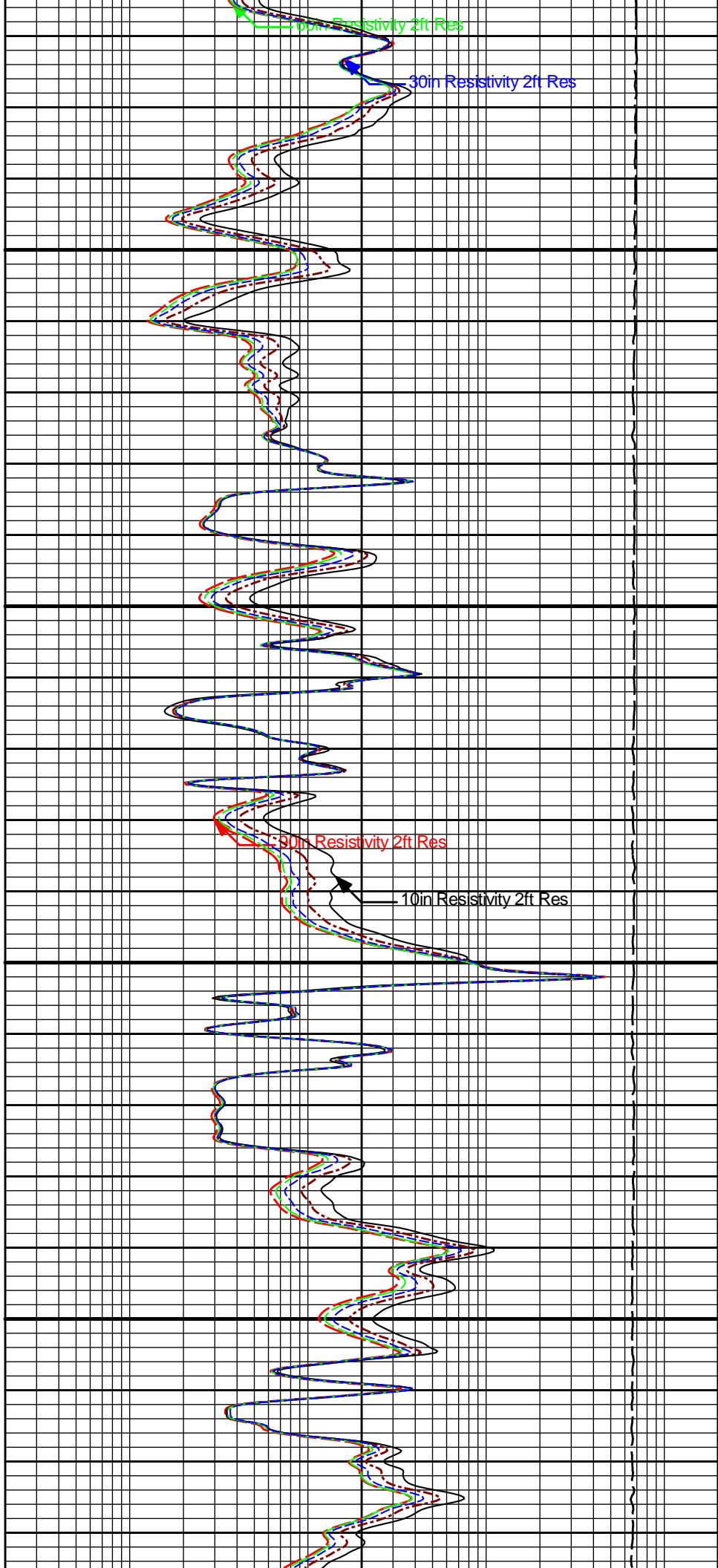
10in Resistivity 2ft Res

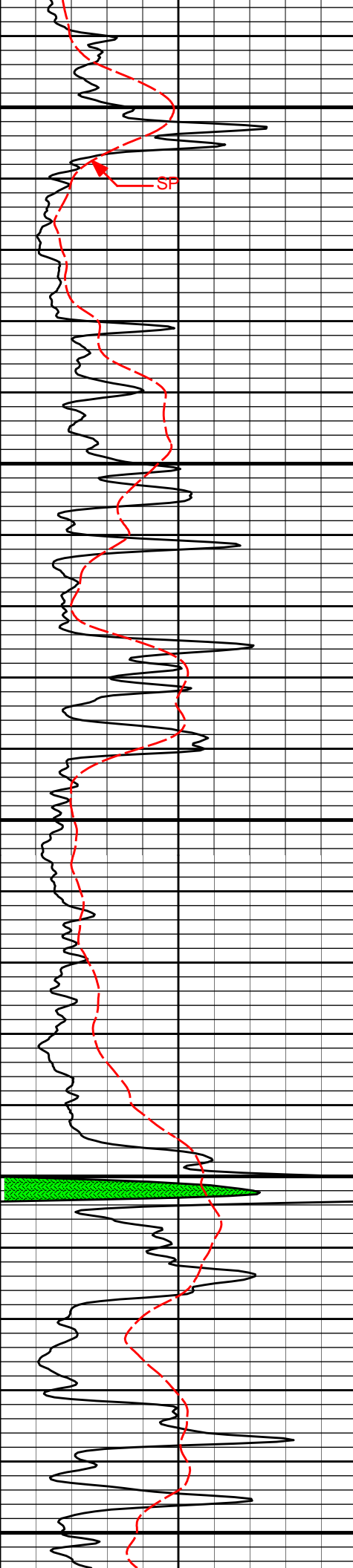
20in Resistivity 2ft Res



4000

4100





4200

20in Resistivity 2ft Res

60in Resistivity 2ft Res

30in Resistivity 2ft Res

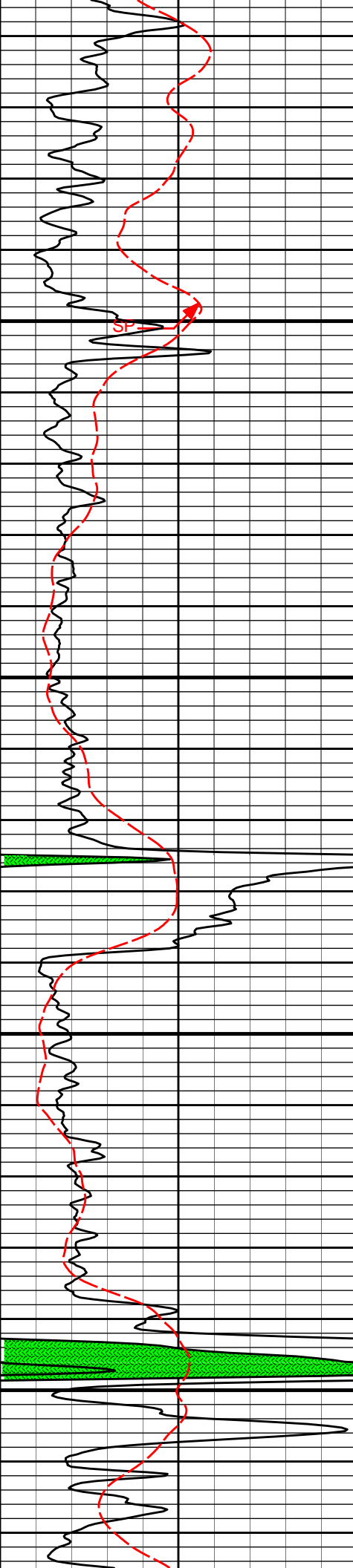
4300

90in Resistivity 2ft Res

10in Resistivity 2ft Res

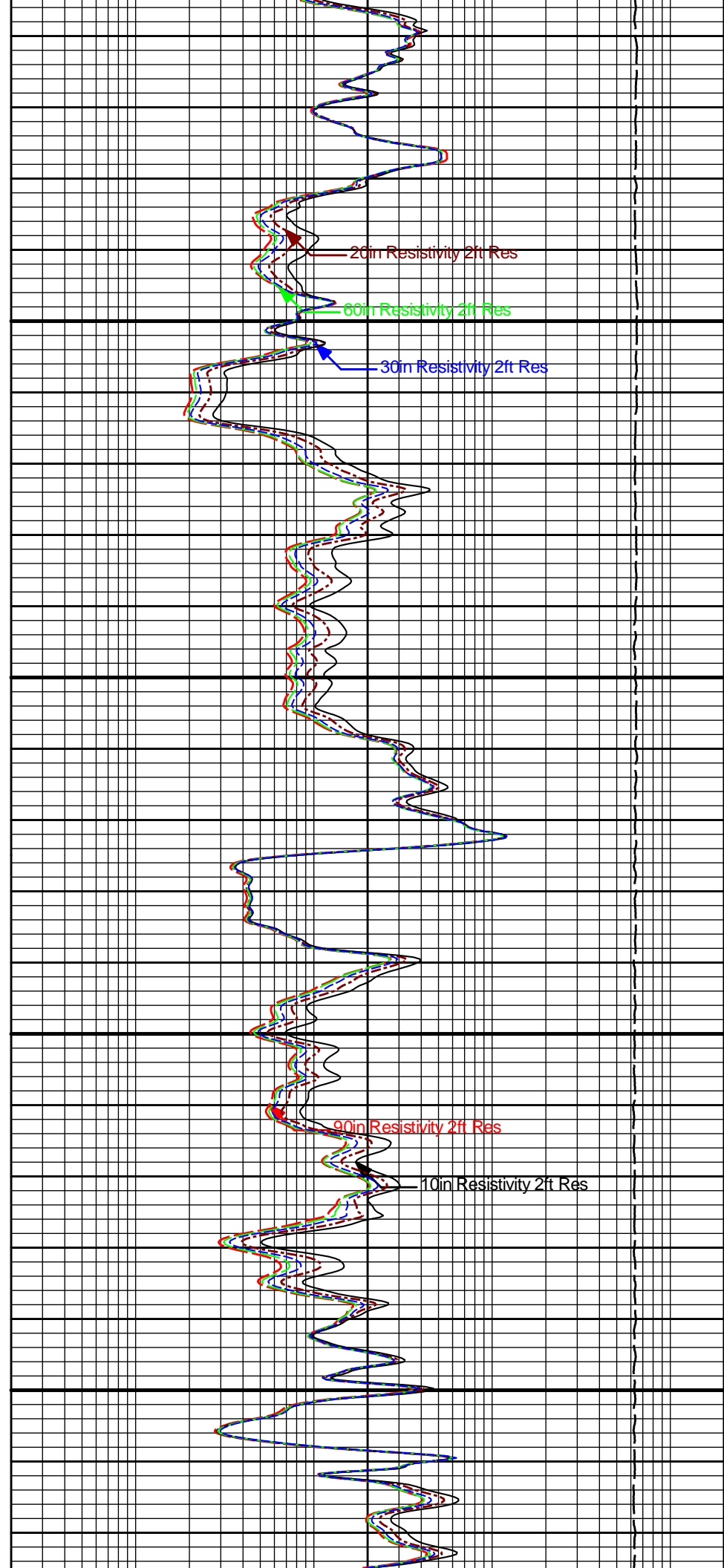
4400

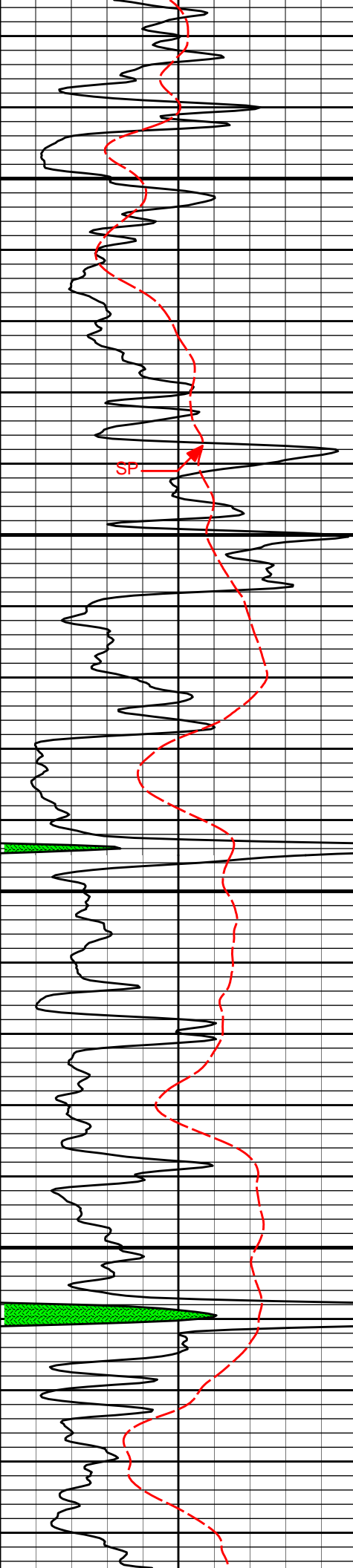




4500

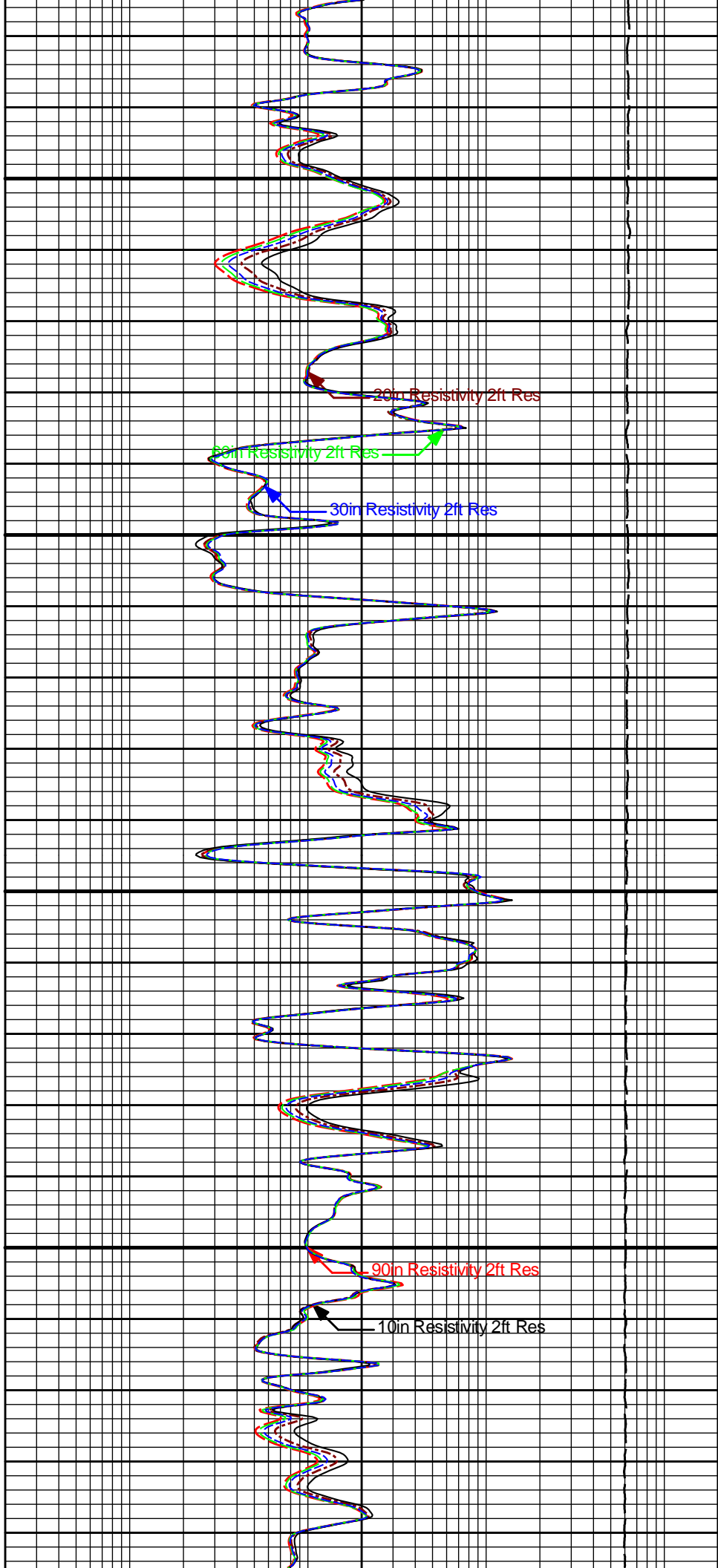
4600

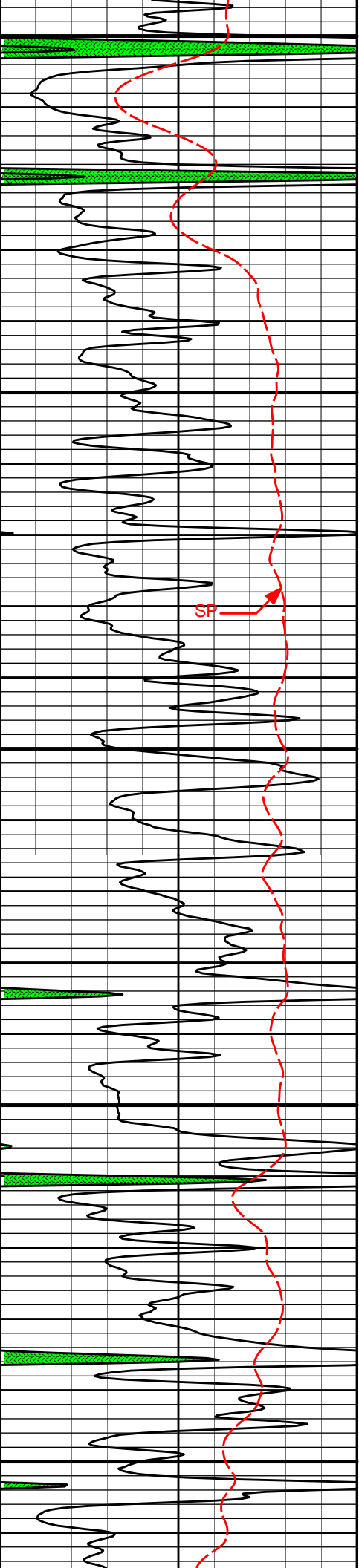




4700

4800

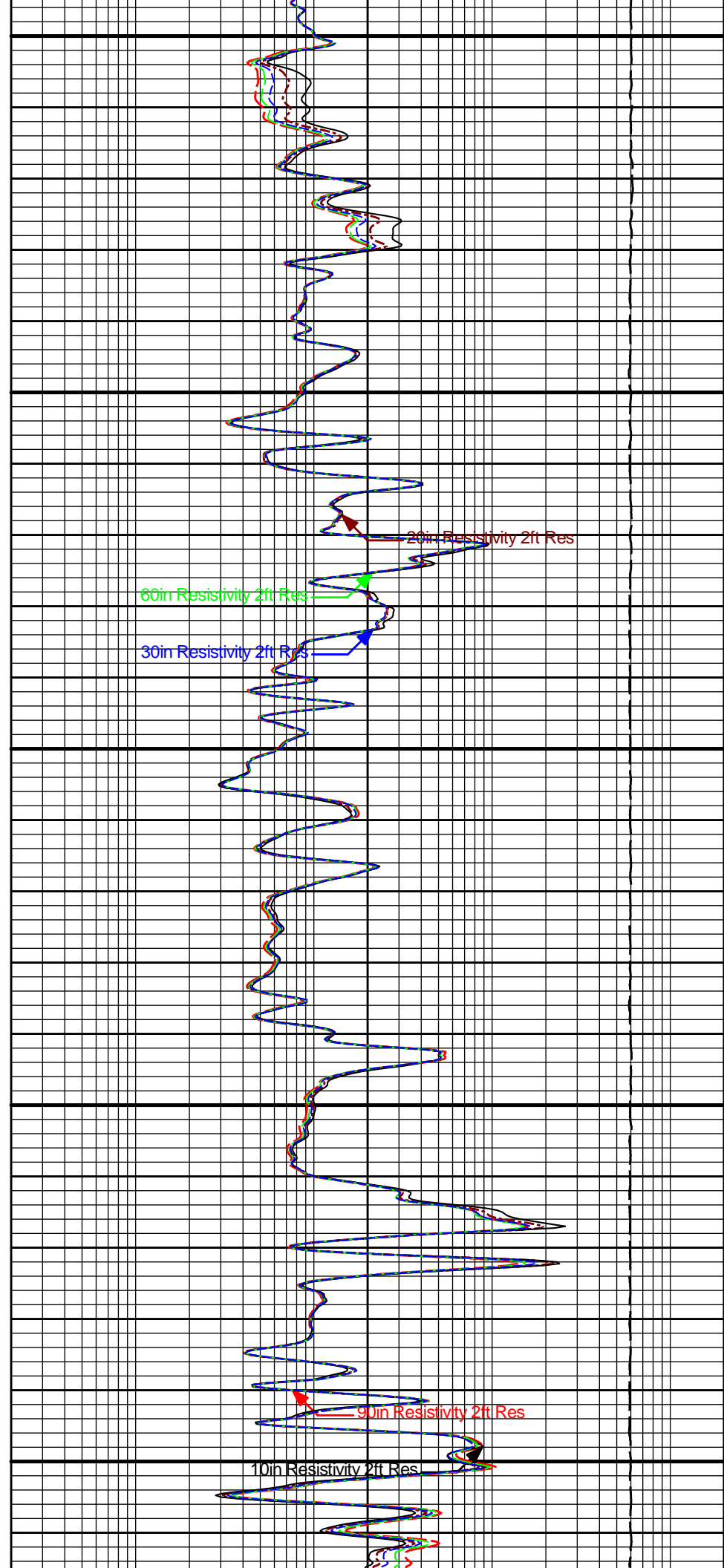




4900

SF

5000



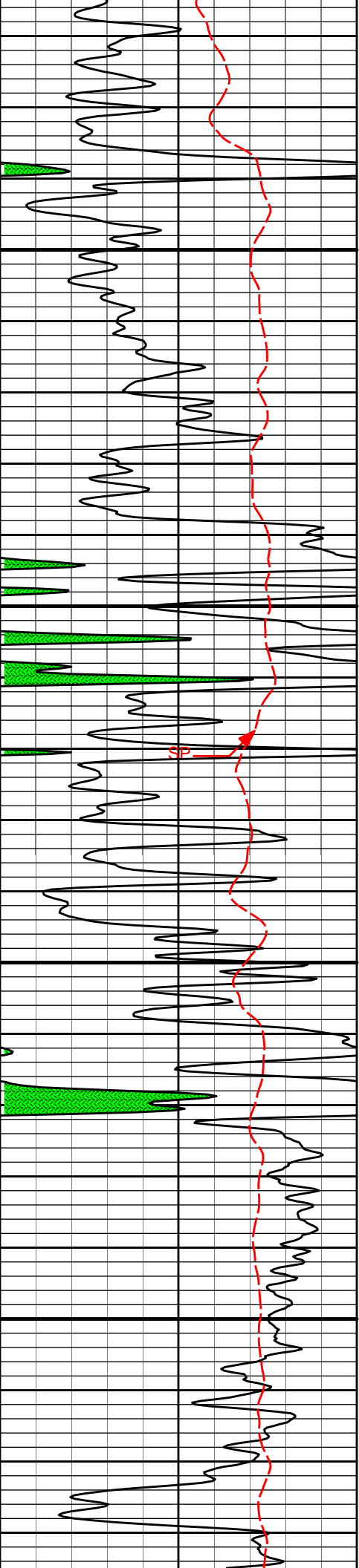
20in Resistivity 2ft Res

60in Resistivity 2ft Res

30in Resistivity 2ft Res

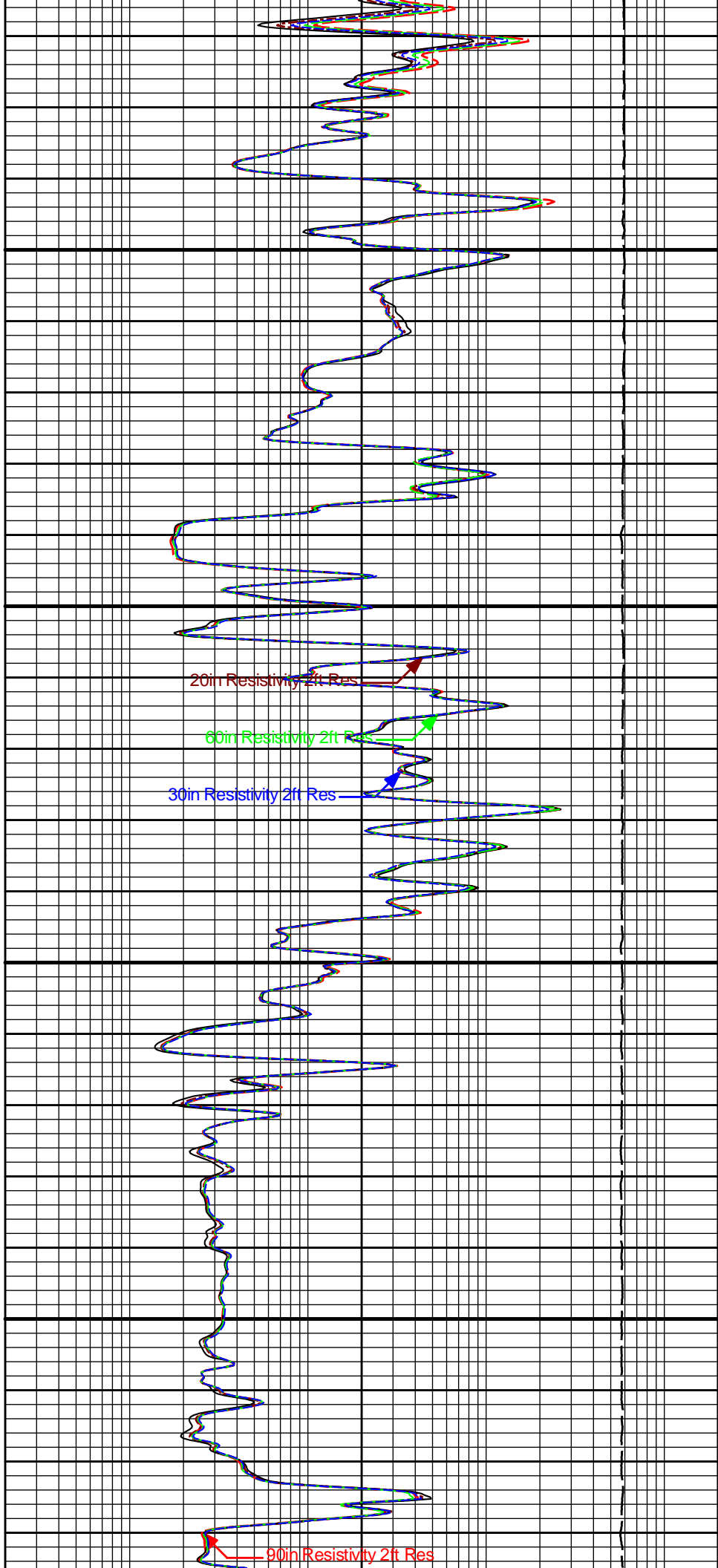
90in Resistivity 2ft Res

10in Resistivity 2ft Res



5100

5200

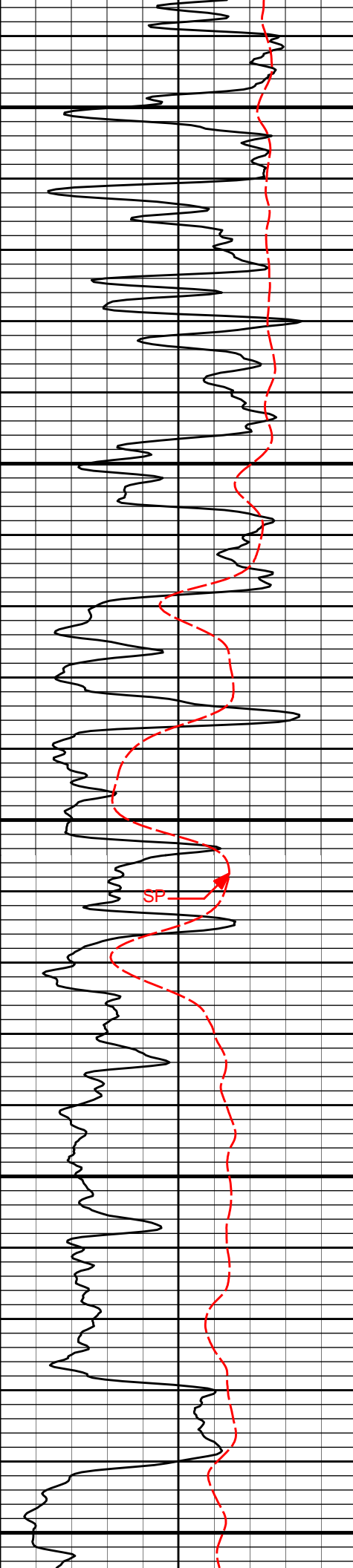


20in Resistivity 2ft Res

60in Resistivity 2ft Res

30in Resistivity 2ft Res

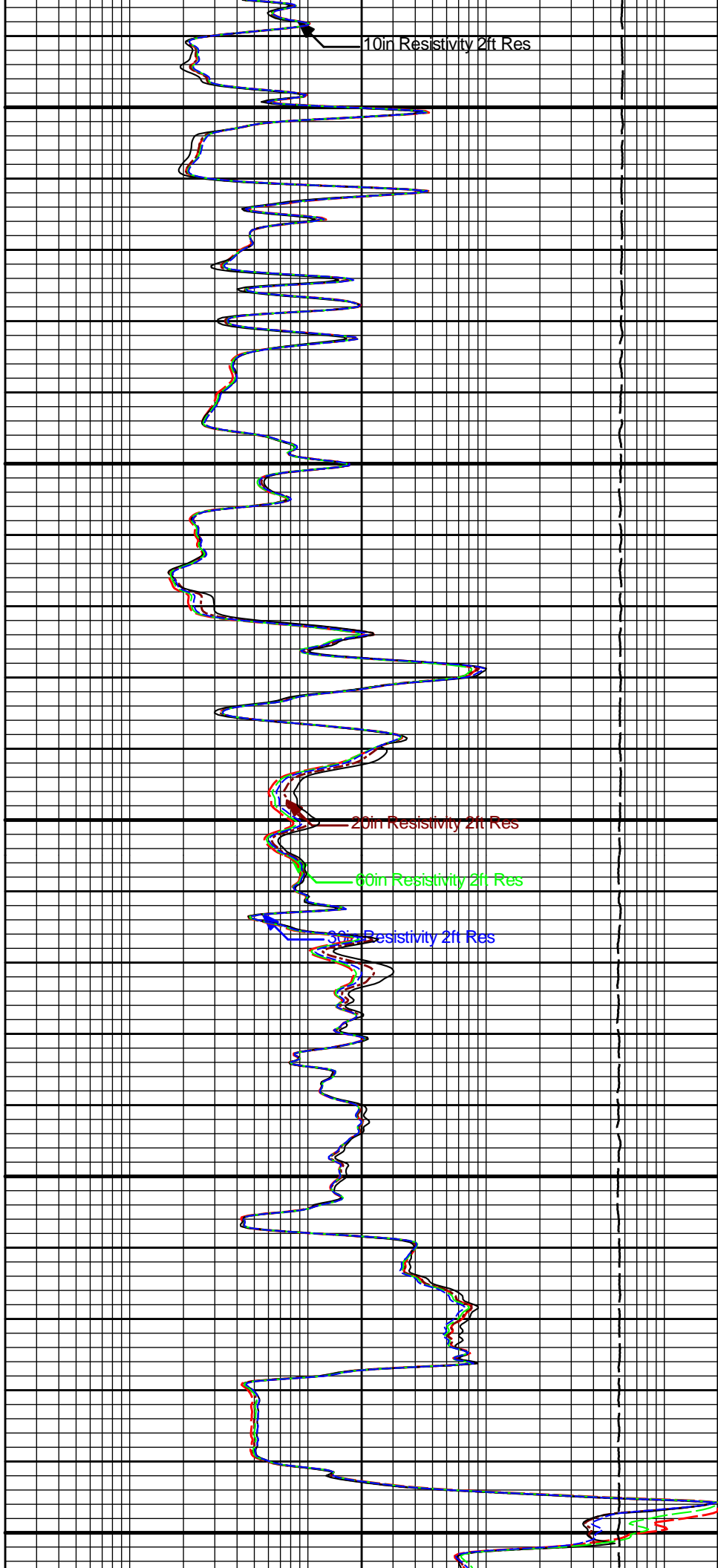
90in Resistivity 2ft Res

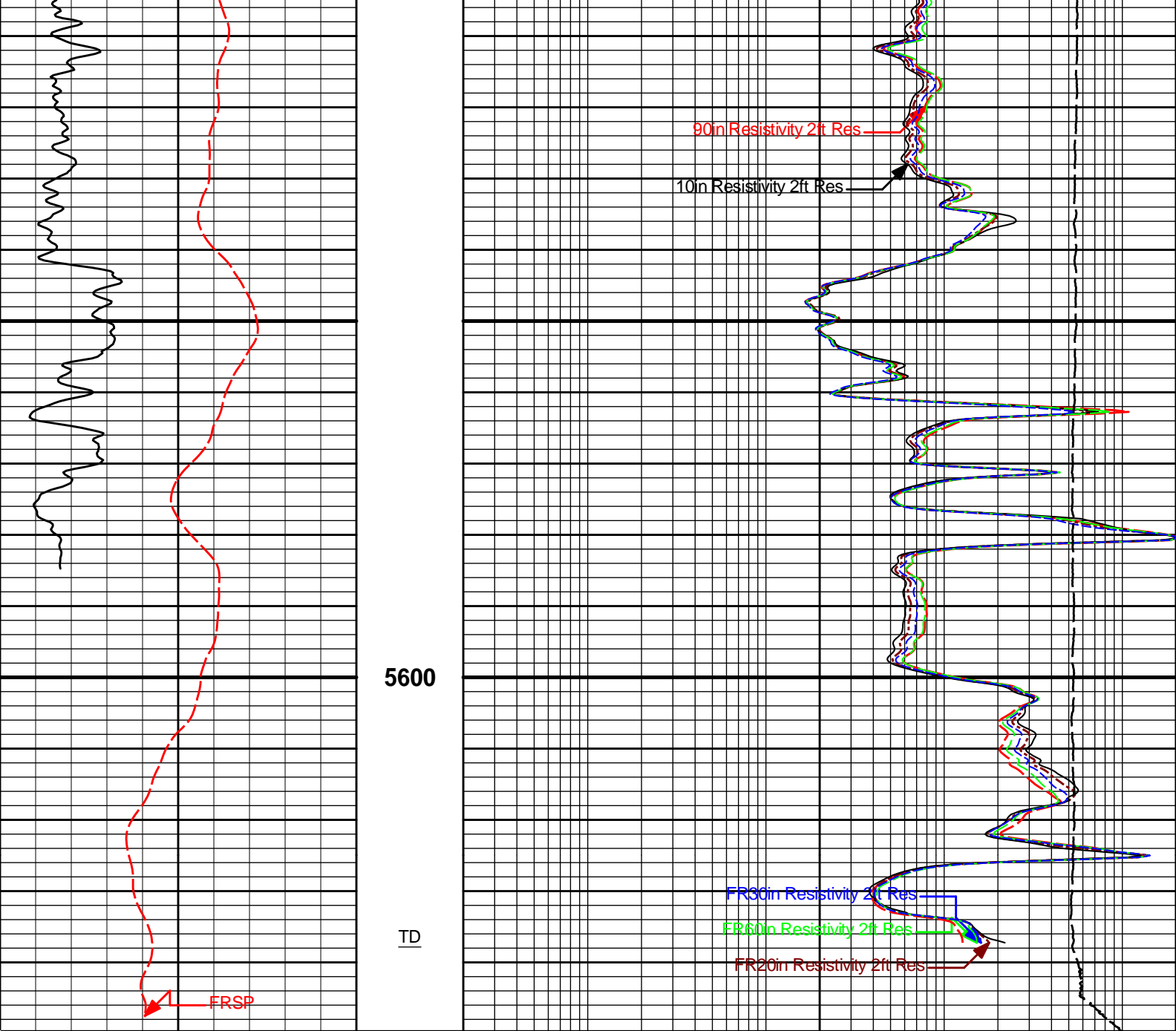


5300

5400

5500





0	Gamma API	150		15K	Tension	0
	api				pounds	
	SP		0.2	90in Resistivity 2ft Res		2K
	-]20[+			ohmm		
			0.2	60in Resistivity 2ft Res		2000
				ohmm		
			0.2	30in Resistivity 2ft Res		2000
				ohm-metre		
			0.2	20in Resistivity 2ft Res		2000
				ohmm		
			0.2	10in Resistivity 2ft Res		2K
				ohmm		

5 INCH MAIN LOG

5 INCH MAIN LOG

HALLIBURTON

Plot Time: 28-Mar-22 17:05:17

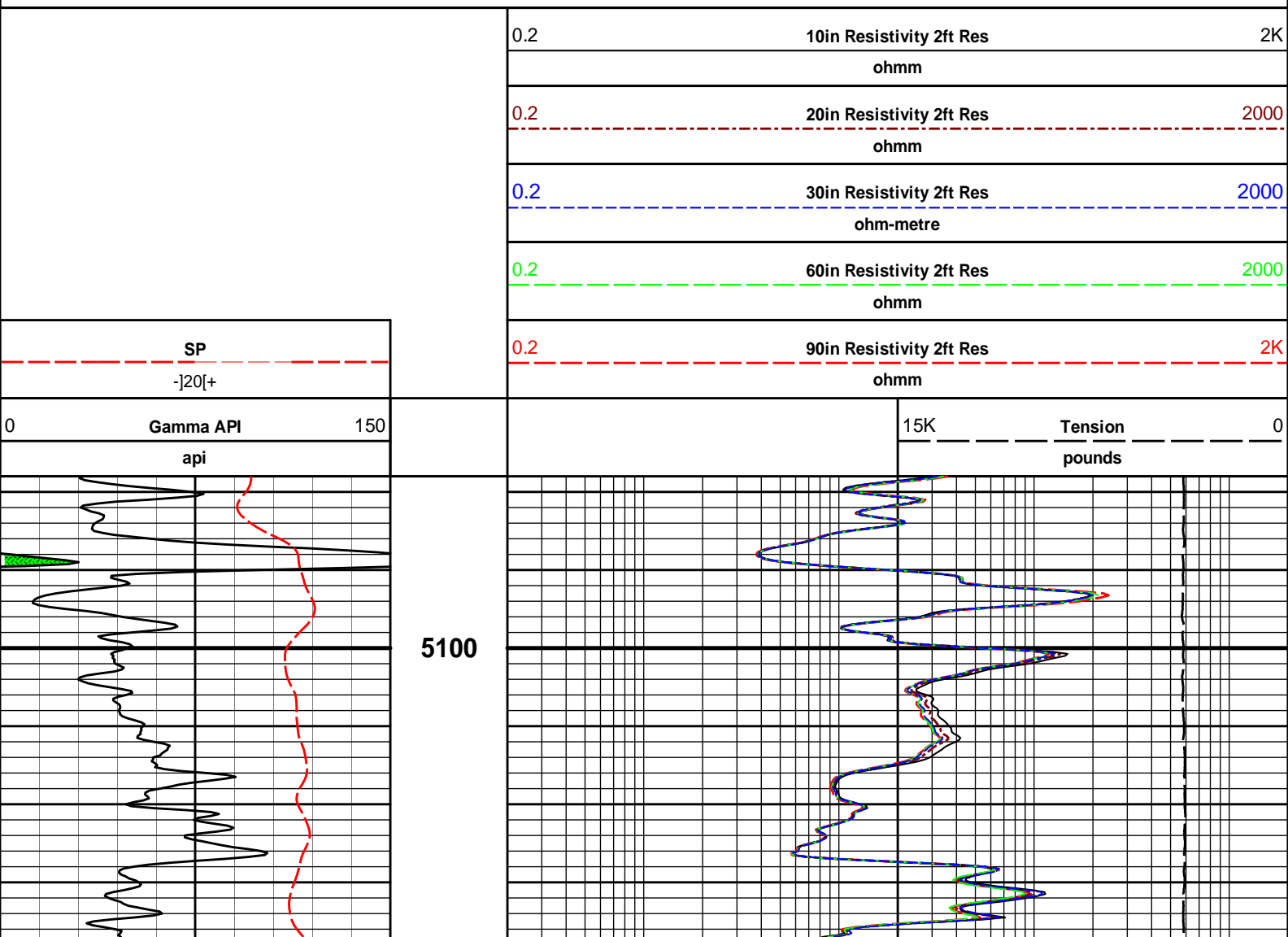
Plot Range: 5078 ft to 5649.33 ft

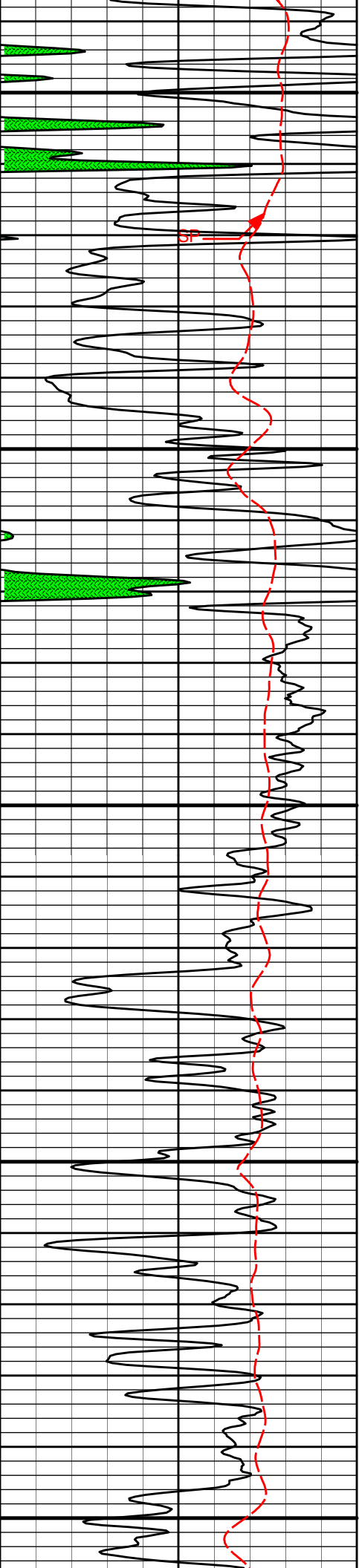
Data: 03-28-MERITWell Based\DAQ-0001-003\

Plot File: \\-LOCAL-03-28-MERIT\0001 RWCH-GTET-DSNT-SDLT-BSAT-ACRT\ACRT5\ACRT_5inch_repeat

REPEAT SECTION

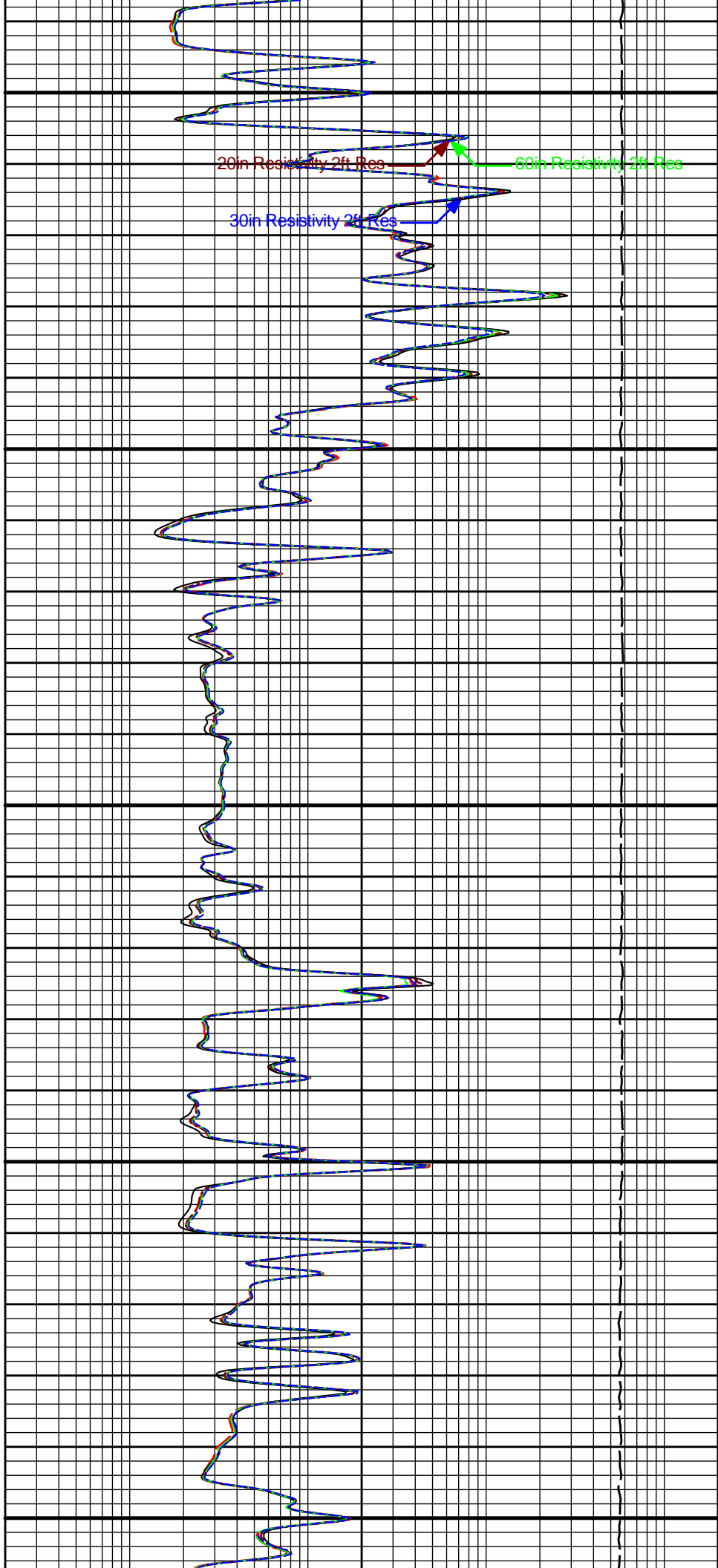
REPEAT SECTION





5200

5300



20in Resistivity 2ft Res

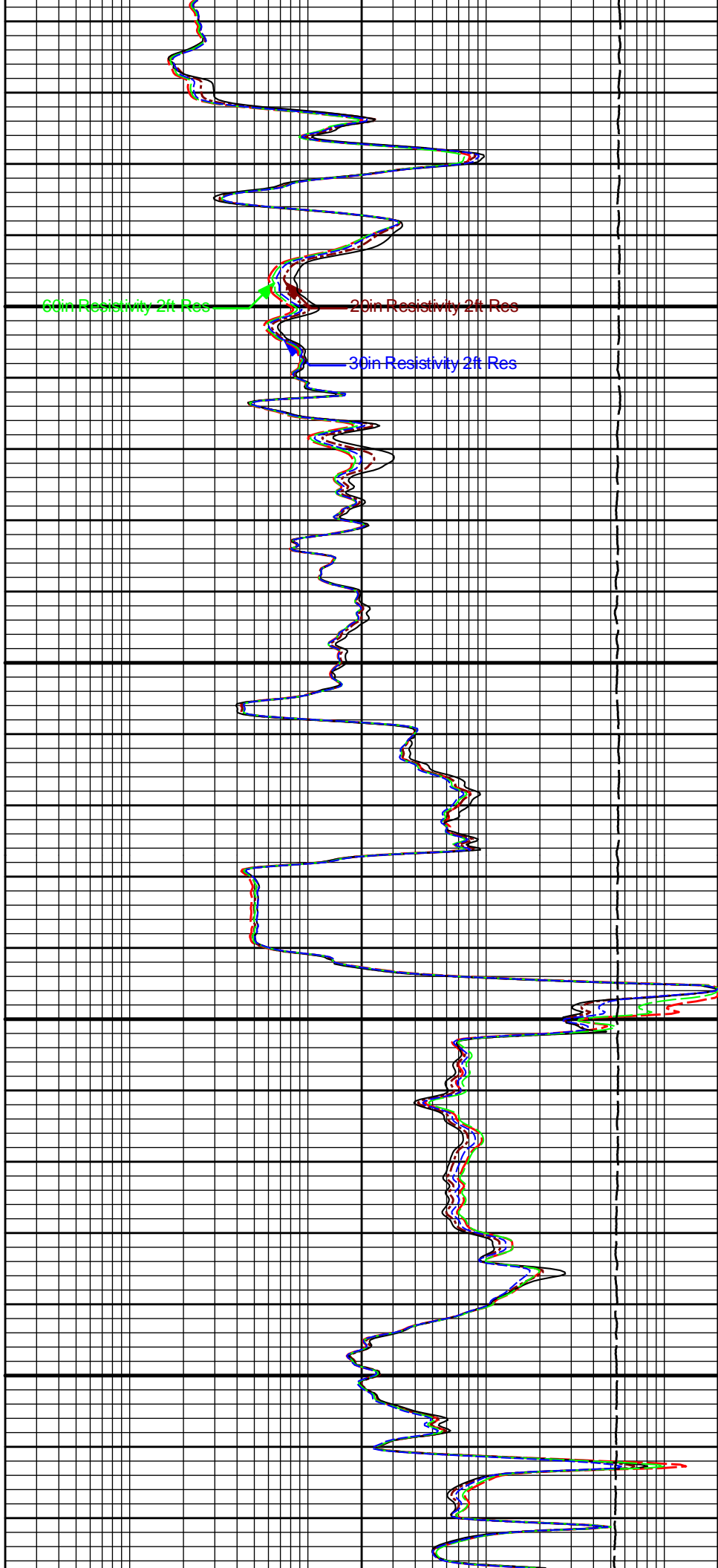
30in Resistivity 2ft Res

60in Resistivity 2ft Res



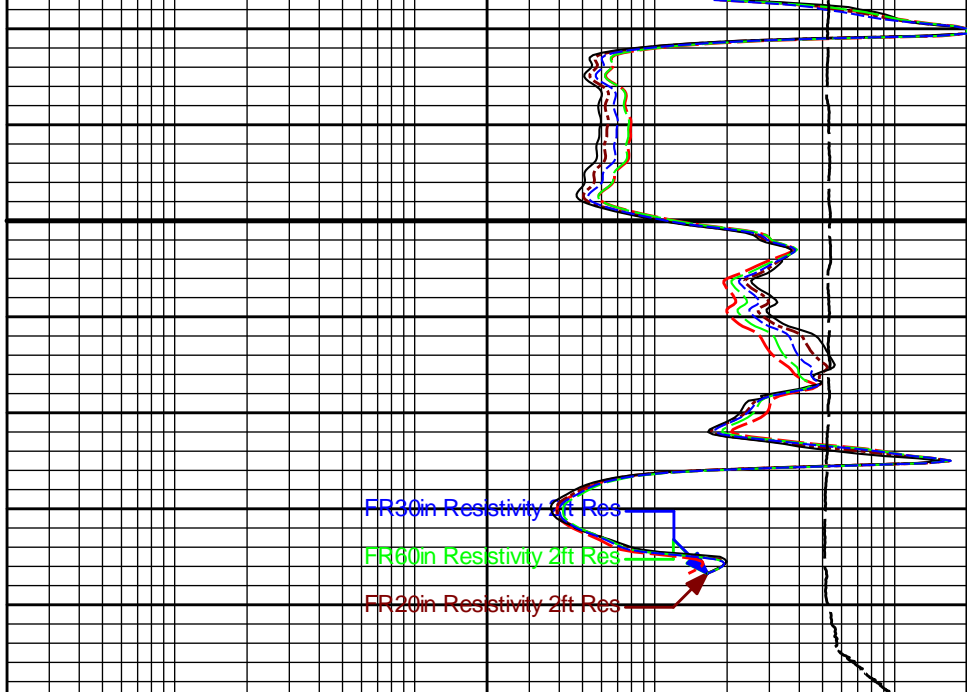
5400

5500





5600



0	Gamma API	150
	api	

15K	Tension	0
	pounds	

	SP	
	-]20[+	

0.2	90in Resistivity 2ft Res	2K
	ohmm	

0.2	60in Resistivity 2ft Res	2000
	ohmm	

0.2	30in Resistivity 2ft Res	2000
	ohm-metre	

0.2	20in Resistivity 2ft Res	2000
	ohmm	

0.2	10in Resistivity 2ft Res	2K
	ohmm	

HALLIBURTON

Plot Time: 28-Mar-22 17:05:18
 Plot Range: 5078 ft to 5649.33 ft
 Data: 03-28-MERIT\Well Based\DAQ-0001-003\
 Plot File: \\-LOCAL-103-28-MERIT\0001 RWCH-GTET-DSNT-SDLT-BSAT-ACRT\ACRT5\ACRT_5inch_repeat

REPEAT SECTION

REPEAT SECTION

HALLIBURTON

CALIBRATION REPORT

NATURAL GAMMA RAY TOOL SHOP CALIBRATION

Tool Name: GTET - 11172469

Reference Calibration Date: 14-Dec-21 17:47:25

Engineer: M. GALLION

Calibration Date: 07-Mar-22 15:48:15

Calibrator Source S/N: TB-768
 Calibrator API Reference:203.00 api
 Equivalent Calibrator API Reference:206.6 api

Measurement	Measured	Calibrated	Units
Background	16.9	17.2	api
Background + Calibrator	220.1	223.8	api
Calibrator	203.2	206.6	api

NATURAL GAMMA RAY TOOL FIELD CALIBRATION

Tool Name: GTET - 11172469 Reference Calibration Date: 07-Mar-22 15:48:15
Engineer: M. GALLION Calibration Date: 12-Mar-22 10:39:01
Software Version: WL INSITE R6.4.20 (Build 2) Calibration Version: 1

Calibrator Source S/N: TB-768
 Calibrator API Reference:203.00 api
 Equivalent Calibrator API Reference:206.6 api

Field Verification	Shop	Field	Units
Background	17.2	17.1	api
Background + Calibrator	223.8	221.4	api
Calibrator	206.6	204.3	api

Shop	Field	Difference	Tolerance
206.6	204.3	2.3	+/- 9.00

DUAL SPACED NEUTRON SHOP CALIBRATION

Tool Name: DSNT - 11019643 Reference Calibration Date: 20-Nov-21 07:01:22
Engineer: M. GALLION Calibration Date: 03-Mar-22 14:13:22
Software Version: WL INSITE R6.6.1 (Build 2) Calibration Version: 1

Logging Source S/N: DSN-313
 Tank Serial Number: 10585331
 Reference value assigned to Tank: 54.090
 Snow Block S/N: 7665
 Calibration Tank Water Temperature: 68 degF
 Min. Tool Housing Outside Diameter: 3.625 in

CALIBRATION CONSTANTS

Measurement	Prev. Value	New Value	Control Limit On New Value
Gain:	0.99248	0.98833	0.900 - 1.100

WATER TANK SUMMARY (Horizontal Water Tank)

Measurement	Current Reading (Previous Coef.)	Calibrated (New Coef.)	Change	Control Limit On Change
Porosity (decp):	0.2257	0.2244	0.0013	+/- 0.0020
Calibrated Ratio:	10.2239	10.1812	0.043	+/- 0.050

VERIFIER

Measurement	Value	Control Limit
Snow-Block Porosity (decp):	0.0842	0.02000 - 0.09000

PASS/FAIL SUMMARY

Background Check: Passed

	(Previous Coeff.)	(New Coeff.)	New Value	
PAD EXTENSION:				
Small Ring (in)	1.98	2.00	0.02	+/- 0.20
Medium Ring (in)	3.74	3.75	0.01	+/- 0.20
RING DIAMETER:				
Small Ring (in)	6.46	6.50	0.04	+/- 0.20
Medium Ring (in)	8.24	8.25	0.01	+/- 0.20
Large Ring (in)	15.00	15.00	0.00	+/- 0.20

PASS/FAIL SUMMARY

Calibration-Coefficients Range Check: Passed
 Ring-Measurement Check: Passed

PASS/FAIL SUMMARY

Calibration-Coefficients Range Check: Passed

SDLT CALIPER FIELD CALIBRATION

Tool Name: SDLT - 11014296

Reference Calibration Date: 03-Mar-22 17:07:15

Engineer: M. GALLION

Calibration Date: 03-Mar-22 17:08:43

Software Version: WL INSITE R6.6.1 (Build 2)

Calibration Version: 1

MEASURED CALIPER VALUES				
Measurement	Shop	Field	Change	Control Limit On New Value
Pad Extension	3.75	3.75	0.00	+/- 0.10
Ring Diameter	8.25	8.25	-0.00	+/- 0.15

PASS/FAIL SUMMARY

Pad Extension Check: Passed
 Diameter Check: Passed

SPECTRAL DENSITY SHOP CALIBRATION

Tool Name: SDLT Pad - 10763919

Reference Calibration Date: 27-Nov-21 18:58:04

Engineer: M. GALLION

Calibration Date: 03-Mar-22 14:57:18

Software Version: WL INSITE R6.6.1 (Build 2)

Calibration Version: 1

Logging Source S/N: 5381GW

Aluminum Block S/N: 10585329

Density: 2.595g/cc

Pe: 3.270

Magnesium Block S/N: 10585330

Density: 1.679g/cc

Pe: 2.580

DENSITY CALIBRATION SUMMARY

Measurement	Previous Value	New Value	Control Limit
Near Bar Gain	1.0635	1.0463	0.90 - 1.10
Near Dens Gain	1.0182	1.0224	0.90 - 1.10
Near Peak Gain	1.0153	1.0087	0.90 - 1.10
Near Lith Gain	0.9960	0.9946	0.90 - 1.10
Far Bar Gain	1.0131	1.0125	0.90 - 1.10
Far Dens Gain	0.9974	0.9983	0.90 - 1.10
Far Peak Gain	0.9909	0.9935	0.90 - 1.10
Far Lith Gain	0.9670	0.9594	0.90 - 1.10

Near Bar Offset	-0.4009	-0.2344	NONE
Near Dens Offset	0.0352	0.0040	NONE
Near Peak Offset	0.0554	0.1183	NONE
Near Lith Offset	0.1652	0.1750	NONE
Far Bar Offset	0.0380	0.0510	NONE
Far Dens Offset	0.1461	0.1396	NONE

Far Dens Offset	0.1401	0.1390	NONE
Far Peak Offset	0.1605	0.1304	NONE
Far Lith Offset	0.2829	0.3123	NONE
Near Bar Background	920.62	917.41	700 - 1450
Near Dens Background	302.56	301.92	230 - 480
Near Peak Background	133.05	132.96	100 - 210
Near Lith Background	164.13	163.11	125 - 260
Far Bar Background	622.74	619.39	450 - 900
Far Dens Background	243.73	242.74	175 - 345
Far Peak Background	97.27	95.52	70 - 140
Far Lith Background	100.58	101.28	75 - 145

CALIBRATION BLOCK SUMMARY				
Measurement	Current Reading (Previous Coef)	Calibrated (New Coef)	Change	Control Limit On Change
MAGNESIUM				
Density (g/cc)	1.672	1.679	0.008	+/- 0.015
Pe	2.496	2.545	0.049	+/- 0.150
ALUMINUM				
Density (g/cc)	2.583	2.595	0.012	+/- 0.01500
Pe	3.137	3.221	0.084	+/- 0.150

TOOL SUMMARY				
Measurement	Near Detector		Far Detector	
	Value	Control Limits	Value	Control Limits
QUALITY				
Background	0.0002	+/- 0.0110	-0.0003	+/- 0.0140
Magnesium Block	-0.0002	+/- 0.0110	-0.0015	+/- 0.0140
Aluminum Block	0.0004	+/- 0.0110	-0.0005	+/- 0.0140
Resolution	8.80	6.00 - 11.50	9.20	6.00 - 11.50
Internal Verifier(B+D+P+L)	1515	1200 - 2700	1059	800 - 1700

PASS/FAIL SUMMARY	
Background Quality Check:	Passed
Background Range Check:	Passed
Background Resolution Check:	Passed
Background Verification Check:	Passed
Magnesium Quality Check:	Passed
Aluminum Quality Check:	Passed
Gains Check:	Passed
Changes in Calibration Blocks:	Passed

SPECTRAL DENSITY FIELD CHECK

Tool Name: SDLT Pad - 10763919

Reference Calibration Date: 03-Mar-22 14:57:18

Engineer: M. GALLION

Calibration Date: 03-Mar-22 15:02:13

Software Version: WL INSITE R6.6.1 (Build 2)

Calibration Version: 1

Pad Temperature: 82.3 degF

DENSITY FIELD CALIBRATION SUMMARY				
Measurement	Shop	Field	Change	Control Limit +/-
Near (B+D+P+L) cps	1515.394	1519.413	4.019	15.681
Far (B+D+P+L) cps	1058.939	1053.560	-5.379	17.272

Near Resolution	8.80	8.85	0.050	0.50
Far Resolution	9.20	9.15	-0.050	1.00

PASS/FAIL SUMMARY

Bkg Quality Check:	Passed
Bkg Resolution Check:	Passed
Bkg Verification Check:	Passed

SPECTRAL DENSITY POST CHECK

Tool Name: SDLT Pad - 10763919	Reference Calibration Date: 03-Mar-22 15:02:13
Engineer: M. GALLION	Calibration Date: 03-Mar-22 15:05:26
Software Version: WL INSITE R6.6.1 (Build 2)	Calibration Version: 1

Pad Temperature: 82.3 degF

DENSITY POST CALIBRATION SUMMARY				
Measurement	Field	Post	Change	Control Limit +/-
Near (B+D+P+L) cps	1519.413	1511.939	-7.474	15.681
Far (B+D+P+L) cps	1053.560	1056.094	2.534	17.272
Near Resolution	8.85	8.73	-0.120	0.50
Far Resolution	9.15	9.19	0.040	1.00

PASS/FAIL SUMMARY

Bkg Quality Check:	Passed
Bkg Resolution Check:	Passed
Bkg Verification Check:	Passed

MICRO LOG SHOP CALIBRATION

Tool Name: Microlog Pad - 11014296	Reference Calibration Date: 21-Jan-22 15:19:35
Engineer: M. GALLION	Calibration Date: 03-Mar-22 17:13:27
Software Version: WL INSITE R6.6.1 (Build 2)	Calibration Version: 1
Host Tool Name: DSNT - 11019643	

CALIBRATION COEFFICIENT SUMMARY					
Measurement	Micro Log Normal		Micro Log Lateral		Units
	Measured	Calibrated	Measured	Calibrated	
Tool Zero	0.03	0.05	0.02	0.02	ohmm
Calibration Point #1	-0.00	0.02	0.02	0.02	ohmm
Calibration Point #2	19.90	20.00	20.05	20.00	ohmm
Internal Reference	19.83	19.93	20.04	19.99	ohmm

Measurement	Micro Log Normal Tool Value		Micro Log Lateral Tool Value		Units
Tool Zero		3.19		0.02	V
Calibration Point #1		-4.69		1.39	V
Calibration Point #2		5311.30		6943.48	V
Internal Reference		5292.64		6940.73	V

MICRO LOG FIELD CHECK

Tool Name: Microlog Pad - 11014296	Reference Calibration Date: 03-Mar-22 17:13:27
Engineer: M. GALLION	Calibration Date: 03-Mar-22 17:13:58
Software Version: WL INSITE R6.6.1 (Build 2)	Calibration Version: 1

Measurement	Micro Log Normal		Micro Log Lateral		Units
	Shop	Field	Shop	Field	
Tool Zero	0.05	0.00	0.00	0.00	V

Tool Zero	0.05	0.03	0.02	0.02	ohmm
Internal Reference	19.93	19.93	19.99	19.99	ohmm

Summary					
Signal	Shop	Field	Difference	Tolerance	
Microlog Normal	19.93	19.93	0.00	+/- 0.80	
Microlog Lateral	19.99	19.99	0.00	+/- 0.80	

ARRAY COMPENSATED TRUE RESISTIVITY SHOP CALIBRATION

Tool Name: ACRt Sonde - 10947895	Reference Calibration Date: 29-Nov-21 18:24:28
Engineer: J. CABANZO	Calibration Date: 10-Mar-22 12:20:29
Software Version: WL INSITE R6.6.1 (Build 2)	Calibration Version: 1
Host Tool Name: ACRt Instrument - 10937852	

TYPICAL GAIN RANGE									
Subarray	R12KHz			R36KHz			R72KHz		
	Lower	(mmho/m)	Upper	Lower	(mmho/m)	Upper	Lower	(mmho/m)	Upper
A1 (80")	0.95	1.0126	1.05	0.95	1.0107	1.05	0.95	1.0014	1.05
A2 (50")	0.95	1.0093	1.05	0.95	1.0069	1.05	0.95	0.9979	1.05
A3 (29")	0.95	1.0038	1.05	0.95	1.0018	1.05	0.95	0.9932	1.05
A4 (17")	0.95	1.0082	1.05	0.95	1.0027	1.05	0.95	0.9974	1.05
A5 (10")	N/A	N/A	N/A	0.95	0.9967	1.05	0.95	0.9917	1.05
A6 (6")	N/A	N/A	N/A	0.95	0.9813	1.05	0.95	0.9768	1.05

SONDE OFFSET						
Subarray	R12KHz		R36KHz		R72KHz	
	(mmho/m)		(mmho/m)		(mmho/m)	
A1 (80")	0.091		-3.205		-5.370	
A2 (50")	-1.993		-5.050		-7.471	
A3 (29")	-15.480		-5.635		-6.034	
A4 (17")	-103.132		-32.683		-26.370	
A5 (10")	N/A		-88.492		-43.615	
A6 (6")	N/A		294.356		148.105	

TRANSMITTER CURRENT GAIN			
Signal	Lower	R	Upper
12K	0.6	0.87	1.3
36K	1.0	1.88	2.0
72K	1.0	1.12	2.0

R-MUD VERIFICATION			
Signal	Lower (ohm-m)	Measured (ohm-m)	Upper (ohm-m)
Mud Cell	0.95	1.00	1.05

PASS/FAIL SUMMARY	
GAIN RANGE CHK	PASS
SONDE OFFSET CHK	PASS

TOOL OK TO LOG

CALIBRATION SUMMARY						
Sensor	Shop	Field	Post	Difference	Tolerance	Units
GTET-11172469						
Gamma Ray Calibrator	206.6	204.3	-----	2.3	+/- 9.00	api
DSNT-11019643						
Snow-Block Porosity	0.0842	0.0844	0.0847	-0.0003	+/- 0.0150	decp

SDLT-11014296

Pad Extension	3.75	3.75	-----	0.00	+/-0.10	in
Ring Diameter	8.25	8.25	-----	0.00	+/-0.15	in
SDLT Pad-10763919						
Near(B+D+P+L)	1515.394	1519.413	1511.939	7.474	+/-15.681	cps
Far(B+D+P+L)	1058.939	1053.560	1056.094	-2.534	+/-17.272	cps
Microlog Pad-11014296						
MicroLog Normal	19.93	19.93	-----	0.00	+/-0.80	ohmm
MicroLog Lateral	19.99	19.99	-----	0.00	+/-0.80	ohmm
ACRt Sonde-10947895						
Mud Cell	1.00	-----	-----	0	-----	ohm-m

Data: 03-28-MERIT0001 RWCH-GTET-DSNT-SDLT-BSAT-ACRT004 28-Mar-22 15:07 Up @5650.3f

Date: 28-Mar-22 15:44:26

HALLIBURTON**PARAMETERS REPORT**

Depth (ft)	Tool Name	Mnemonic	Description	Value	Units
TOP					
	SHARED	BS	Bit Size	7.875	in
	SHARED	UBS	Use Bit Size instead of Caliper for all applications.	No	
	SHARED	MDBS	Mud Base	Water	
	SHARED	MDWT	Borehole Fluid Weight	9.200	ppg
	SHARED	WAGT	Weighting Agent	Barite	
	SHARED	BSAL	Borehole salinity	0.00	ppm
	SHARED	FSAL	Formation Salinity NaCl	0.00	ppm
	SHARED	KPCT	Percent K in Mud by Weight?	0.00	%
	SHARED	RMUD	Mud Resistivity	2.000	ohmm
	SHARED	TRM	Temperature of Mud	75.0	degF
	SHARED	CSD	Logging Interval is Cased?	No	
	SHARED	ICOD	AHV Casing OD	5.500	in
	SHARED	CSTR	Compressive Strength	1000.00	psia
	SHARED	ST	Surface Temperature	75.0	degF
	SHARED	TD	Total Well Depth	10000.00	ft
	SHARED	BHT	Bottom Hole Temperature	200.0	degF
	SHARED	SVTM	Navigation and Survey Master Tool	NONE	
	SHARED	AZTM	High Res Z Accelerometer Master Tool	GTET	
	SHARED	TEMM	CBM Temperature Master Tool	GTET	
	SHARED	MSAL	Water-base mud filtrate salinity	0.00	ppm
	Rwa / CrossPlot	XPOK	Process Crossplot?	Yes	
	Rwa / CrossPlot	FCHO	Select Source of F	Automatic	
	Rwa / CrossPlot	AFAC	Archie A factor	0.6200	
	Rwa / CrossPlot	MFAC	Archie M factor	2.1500	
	Rwa / CrossPlot	RMFR	Rmf Reference	0.10	ohmm
	Rwa / CrossPlot	TMFR	Rmf Ref Temp	75.00	degF
	Rwa / CrossPlot	RWA	Resistivity of Formation Water	0.05	ohmm
	Rwa / CrossPlot	ADP	Use Air Porosity to calculate CrossplotPhi	No	
	Rwa / CrossPlot	BHSM	Borehole Size Source Tool	SDLT	

Rwa / CrossPlot	ROIN	Input for RO Calculation	Rwa	
GTET	ACOK	Do ACCZ Calculations?	Yes	
GTET	GROK	Process Gamma Ray?	Yes	
GTET	GEOK	Process Gamma Ray EVR?	No	
GTET	TPOS	Tool Position for Gamma Ray Tools.	Eccentered	
GTET	BHSM	Borehole Size Source Tool	SDLT	
DSNT	DNOK	Process DSN?	Yes	
DSNT	DEOK	Process DSN EVR?	No	
DSNT	NLIT	Neutron Lithology	Limestone	
DSNT	DNSO	DSN Standoff - 0.25 in (6.35 mm) Recommended	0.250	in
DSNT	DNTT	Temperature Correction Type	None	
DSNT	DPRS	DSN Pressure Correction Type	None	
DSNT	SHCO	View More Correction Options	No	
DSNT	UTVD	Use TVD for Gradient Corrections?	No	
DSNT	LHWT	Logging Horizontal Water Tank?	No	
DSNT	UCLA	Classic Neutron Parameter utilized?	No	
DSNT	BHSM	Borehole Size Source Tool	SDLT	
SDLT	CLOK	Process Caliper Outputs?	Yes	
SDLT Pad	DNOK	Process Density?	Yes	
SDLT Pad	DNOK	Process Density EVR?	No	
SDLT Pad	CB	Logging Calibration Blocks?	No	
SDLT Pad	SPVT	SDLT Pad Temperature Valid?	Yes	
SDLT Pad	DTWN	Disable temperature warning	No	
SDLT Pad	DMA	Formation Density Matrix	2.710	g/cc
SDLT Pad	DFL	Formation Density Fluid	1.000	g/cc
SDLT Pad	BHSM	Borehole Size Source Tool	SDLT	
Microlog Pad	MLOK	Process MicroLog Outputs?	Yes	
BSAT	MBOK	Compute BCAS Results?	Yes	
BSAT	FLLO	Frequency Filter Low Pass Value?	5000	Hz
BSAT	FLHI	Frequency Filter High Pass Value?	27000	Hz
BSAT	DTFL	Delta -T Pore Fluid	189.00	uspf
BSAT	DTMT	Delta -T Matrix Type	Limestone 47.6	
BSAT	DTSH	Delta -T Shale	100.00	uspf
BSAT	SPEQ	Acoustic Porosity Equation	Wylie	
ACRt Sonde	RTOK	Process ACRt?	Yes	
ACRt Sonde	MNSO	Minimum Tool Standoff	1.50	in
ACRt Sonde	TCS1	Temperature Correction Source	FP Lwr & FP Up	
ACRt Sonde	TPOS	Tool Position	Centered	
ACRt Sonde	RMOP	Rmud Source	Mud Cell	
ACRt Sonde	RMIN	Minimum Resistivity for MAP	0.20	ohmm
ACRt Sonde	RMAX	Maximum Resistivity for MAP	200.00	ohmm
ACRt Sonde	THQY	Threshold Quality	0.50	
ACRt Sonde	MRFX	Fixed mud resistivity	2000	ohmm
ACRt Sonde	BHSM	Borehole Size Source Tool	SDLT	
ACRt Sonde	MBFL	Apply Corkscrew Effect?	No	

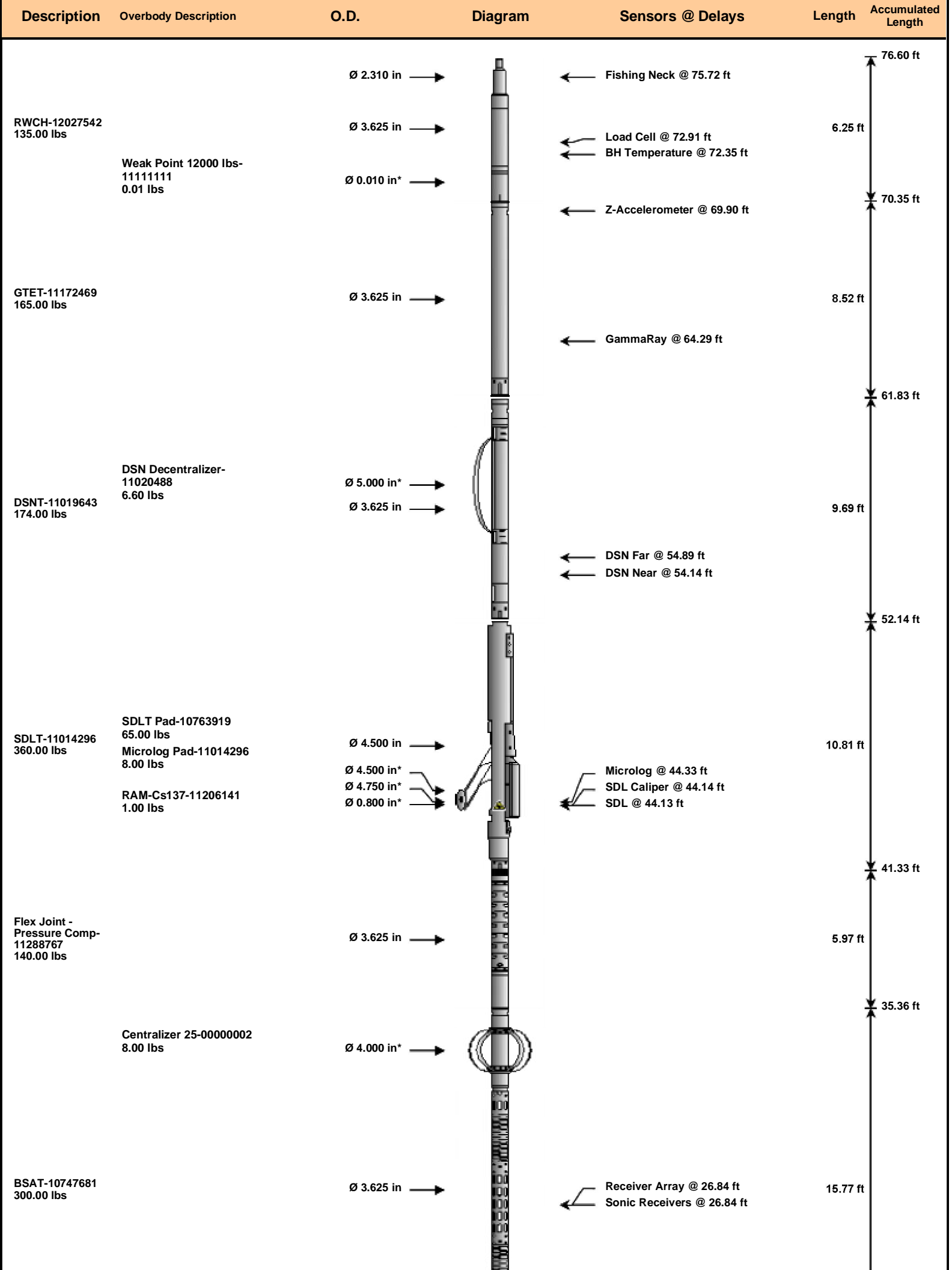
BOTTOM

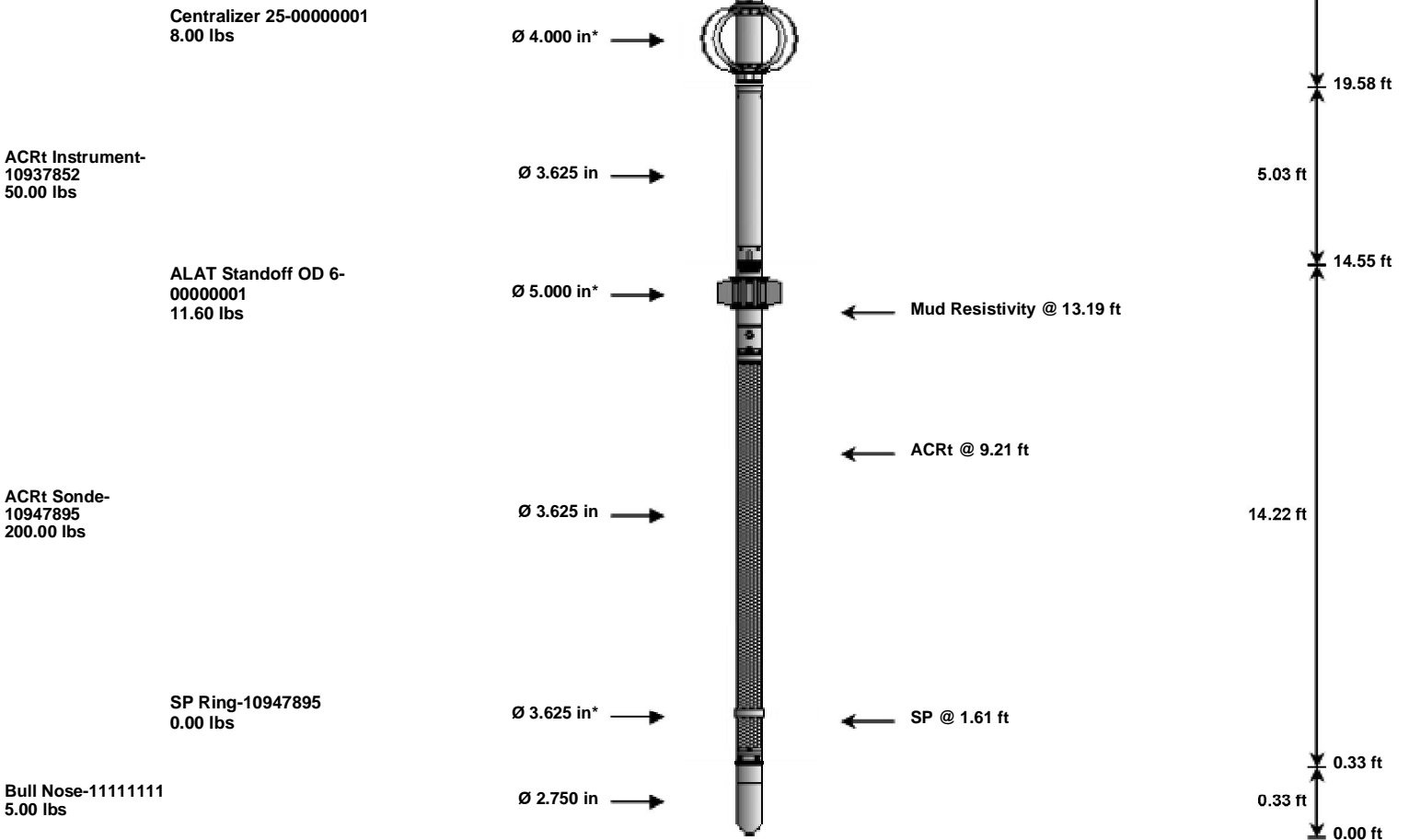
Data: 03-28-MERIT0001 RWCH-GTET-DSNT-SDLT-BSAT-ACRT004 28-Mar-22 15:07 Up @5650.3f

Date: 28-Mar-22 15:45:32

HALLIBURTON

TOOL STRING DIAGRAM REPORT





Mnemonic	Tool Name	Serial Number	Weight (lbs)	Length (ft)	Accumulated Length (ft)	Max. Log. Speed (fpm)
RWCH	Releasable Wireline Cable Head	12027542	135.00	6.25	70.35	300.00
WP12K	Weak Point 12000 lbs	11111111	0.01	0.01	* 71.15	300.00
GTET	Gamma Telemetry Tool	11172469	165.00	8.52	61.83	60.00
DSNT	Dual Spaced Neutron	11019643	174.00	9.69	52.14	60.00
DCNT	DSN Decentralizer	11020488	6.60	5.13	* 55.47	300.00
SDLT	Spectral Density Tool	11014296	360.00	10.81	41.33	60.00
SDLP	Density Insite Pad	10763919	65.00	2.55	* 43.54	60.00
Cs137	Logging Source, SDLT-I, 1.78 Ci - Cs137	11206141	1.00	0.80	* 43.77	300.00
MICP	Microlog Pad	11014296	8.00	1.00	* 43.83	60.00
FLEX	Flex Joint - Pressure Compensated	11288767	140.00	5.97	35.36	300.00
BSAT	Borehole Sonic Array Tool	10747681	300.00	15.77	19.58	60.00
OBCEN	Centralizer - 25 in. Overbody	00000001	8.00	2.08	* 19.87	300.00
OBCEN	Centralizer - 25 in. Overbody	00000002	8.00	2.08	* 32.48	300.00
ACRt	Array Compensated True Resistivity Instrument Section	10937852	50.00	5.03	14.55	120.00
ACRt	Array Compensated True Resistivity Sonde Section	10947895	200.00	14.22	0.33	120.00
SP	SP Ring	10947895	0.00	0.25	* 1.61	300.00
ALATS	Array Laterolog Tool OD 5 Standoff	00000001	11.60	1.00	* 13.21	60.00
BLNS	Bull Nose	11111111	5.00	0.33	0.00	300.00
Total			1,637.21	76.60		

* Not included in Total Length and Length Accumulation.

Data: 03-28-MERIT\0001 RWCH-GTET-DSNT-SDLT-BSAT-ACRT\004 28-Mar-22 15:07 Up @5650.3f Date: 28-Mar-22 15:45:58

COMPANY **MERIT ENERGY COMPANY, LLC**

WELL **WENU 604**

FIELD **EUBANK NORTH**

COUNTY

HASKELL

STATE

KANSAS

HALLIBURTON

ARRAY COMPENSATED
TRUE RESISTIVITY
LOG
5 INCH