

HALLIBURTON

ANNULAR HOLE VOLUME

5.5 INCH CASING

COMPANY		MERIT ENERGY COMPANY, LLC	
WELL		WENU 604	
FIELD/BLOCK		EUBANK NORTH	
COUNTY		HASKELL	
STATE		KANSAS	
Permanent Datum	GL	Sect. 04	Twp. 28S
Log measured from	KB		Rge. 34SW
Drilling measured from	KB		Elev. 3076.3 ft
Date	28-Mar-22		D.F. 3087.3 ft
Run No.	ONE		G.L. 3076.3 ft
Depth - Driller	5637.0 ft		
Depth - Logger	5638.0 ft		
Bottom - Logged Interval	5594.0 ft		
Top - Logged Interval	1776.0 ft		
Casing - Driller	8.625 in	@	
Casing - Logger	1776.0 ft	@	
Bit Size	7.875 in	@	
Type Fluid in Hole	Water Based Mud		
Density	9.2 ppg	56.00 s/qt	
PH	9.00 pH	6.0 optm	
Source of Sample	MUD PIT		
Rm @ Meas. Temperature	1.48 ohmm	@ 70.30 degF	@
Rmf @ Meas. Temperature	1.44 ohmm	@ 70.30 degF	@
Rmc @ Meas. Temperature	0.91 ohmm	@ 70.30 degF	@
Source Rmf	CALC	CALC	
Rm @ BHT	0.85 ohmm	@ 127.1 degF	@
Time Since Circulation	03:24 hr		
Time on Bottom	28-Mar-22 14:35		
Max. Rec. Temperature	127.10 degF	@ 5639.0 ft	@
Equipment	12128583	ALVARADO	
Recorded By	K. BIJERGA	M. ABUEL GASIM	
Witnessed By	KRISTIN ROBINSON		

Fold here

Sales Order Number: 907759235		API No.: 1508122246000		PGM Version: WL INSITE R6.4.20 (Build 2)	
CHANGE IN MUD TYPE OR ADDITIONAL SAMPLE			RESISTIVITY SCALE CHANGES		
Date	Sample No.		Type Log	Depth	Scale Up Hole
Depth-Driller					Scale Down Hole
Type Fluid in Hole					
Density	Viscosity				
Ph	Fluid Loss				
Source of Sample			RESISTIVITY EQUIPMENT DATA		
Rm @ Meas. Temp	@	@	Run No.	Tool Type & No.	Pad Type
Rmf @ Meas. Temp.	@	@	ONE	ACRT	NONE
Rmc @ Meas. Temp.	@	@		10947895	
Source Rmf	Rmc				
Rm @ BHT	@	@			
Rmf @ BHT	@	@			
Rmc @ BHT	@	@			
EQUIPMENT DATA					
GAMMA		ACOUSTIC		DENSITY	
Run No.	ONE	Run No.		Run No.	
Serial No.	11172469	Serial No.		Serial No.	
Model No.	GTET	Model No.		Model No.	
Diameter	3.625"	No. of Cent.		Diameter	
Detector Model No.	GTET	Spacing		Log Type	
Type	SCINT			Source Type	
Length	8"	LSA [Y/N]		Serial No.	
Distance to Source	10'	FWDA [Y/N]		Strength	
LOGGING DATA					

GENERAL			GAMMA		ACOUSTIC		DENSITY			NEUTRON				
Run No.	Depth		Speed	Scale		Scale		Matrix	Scale		Matrix	Scale		Matrix
	From	To	ft/min	L	R	L	R		L	R		L	R	
ONE	5638'	1776'	REC	0 gapi	150 gapi									

DIRECTIONAL INFORMATION

Maximum Deviation	@	KOP	@
-------------------	---	-----	---

Remarks: FIRST LOG ON WELL, POSITIVE DEPTH CONTROL APPLIED
 ANNULAR HOLE VOLUME CALCULATED FOR 5.5 INCH CASING
 LOGGING INTERVALS AND SERVICES ARE AS PER CUSTOMER REQUEST
 TOOLS RAN IN COMBINATION AS PER TOOLSTRING DIAGRAM
 CHLORIDES REPORTED AT 3,000
 LCM REPORTED AT 22 lb/bbl

CREW: C. HERRERA, B. EZEKWU

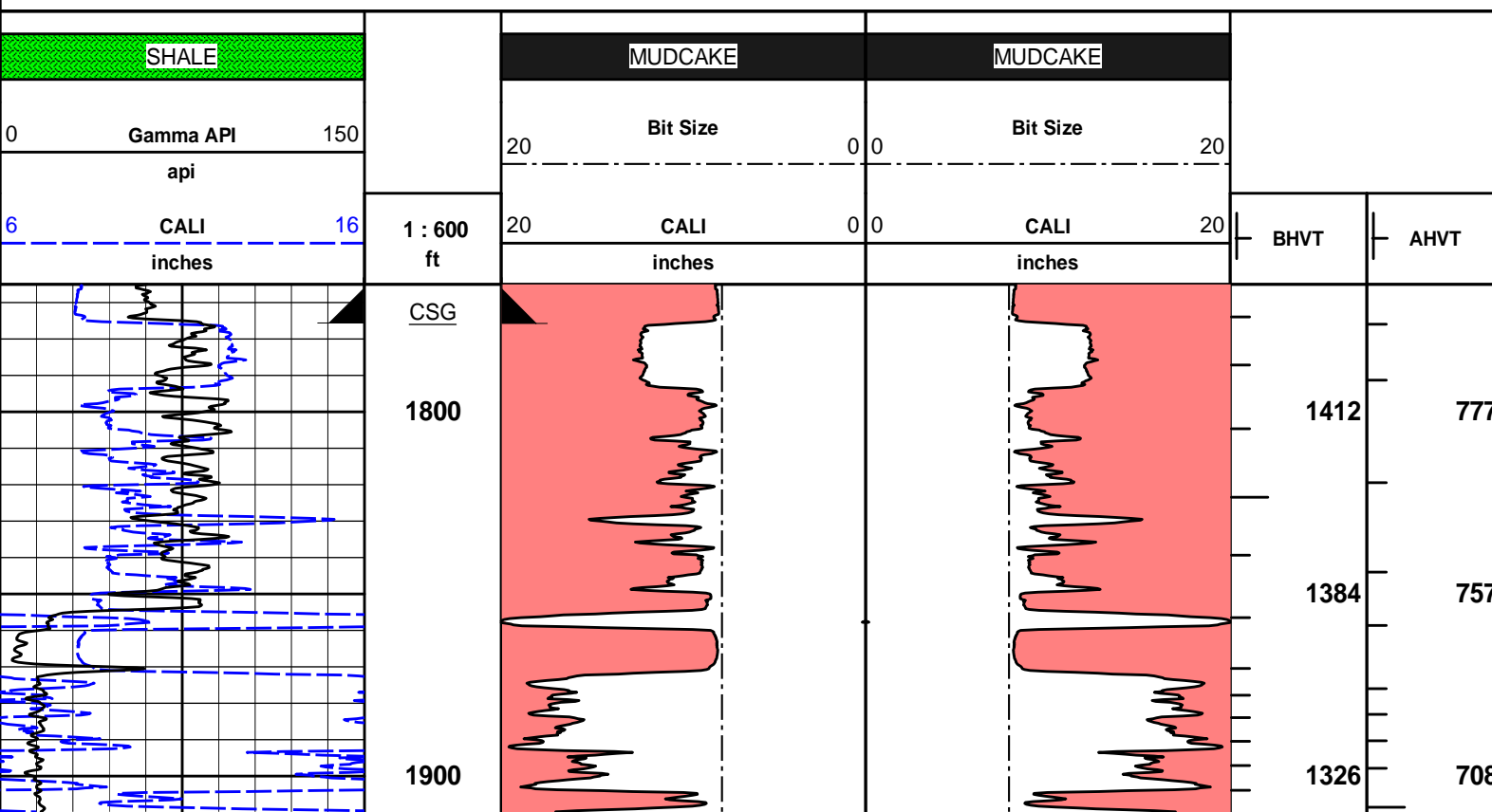
*****THANK YOU FOR CHOOSING HALLIBURTON ENERGY SERVICES*****

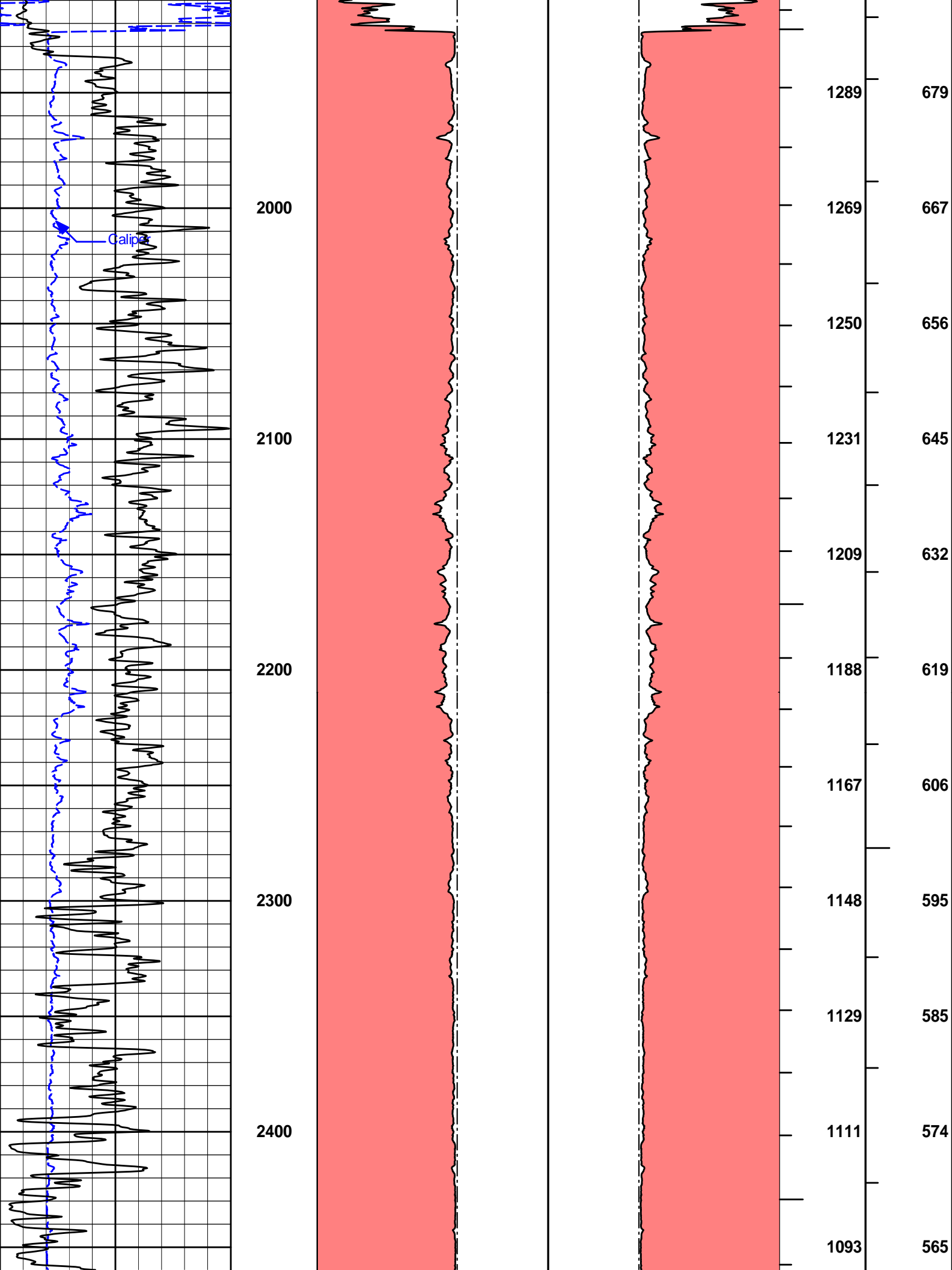
HALLIBURTON DOES NOT GUARANTEE THE ACCURACY OF ANY INTERPRETATION OF THE LOG DATA, CONVERSION OF LOG DATA TO PHYSICAL ROCK PARAMETERS OR RECOMMENDATIONS WHICH MAY BE GIVEN BY HALLIBURTON PERSONNEL OR WHICH APPEAR ON THE LOG OR IN ANY OTHER FORM. ANY USER OF SUCH DATA, INTERPRETATIONS, CONVERSIONS, OR RECOMMENDATIONS AGREES THAT HALLIBURTON IS NOT RESPONSIBLE EXCEPT WHERE DUE TO GROSS NEGLIGENCE OR WILLFUL MISCONDUCT, FOR ANY LOSS, DAMAGES, OR EXPENSES RESULTING FROM THE USE THEREOF.

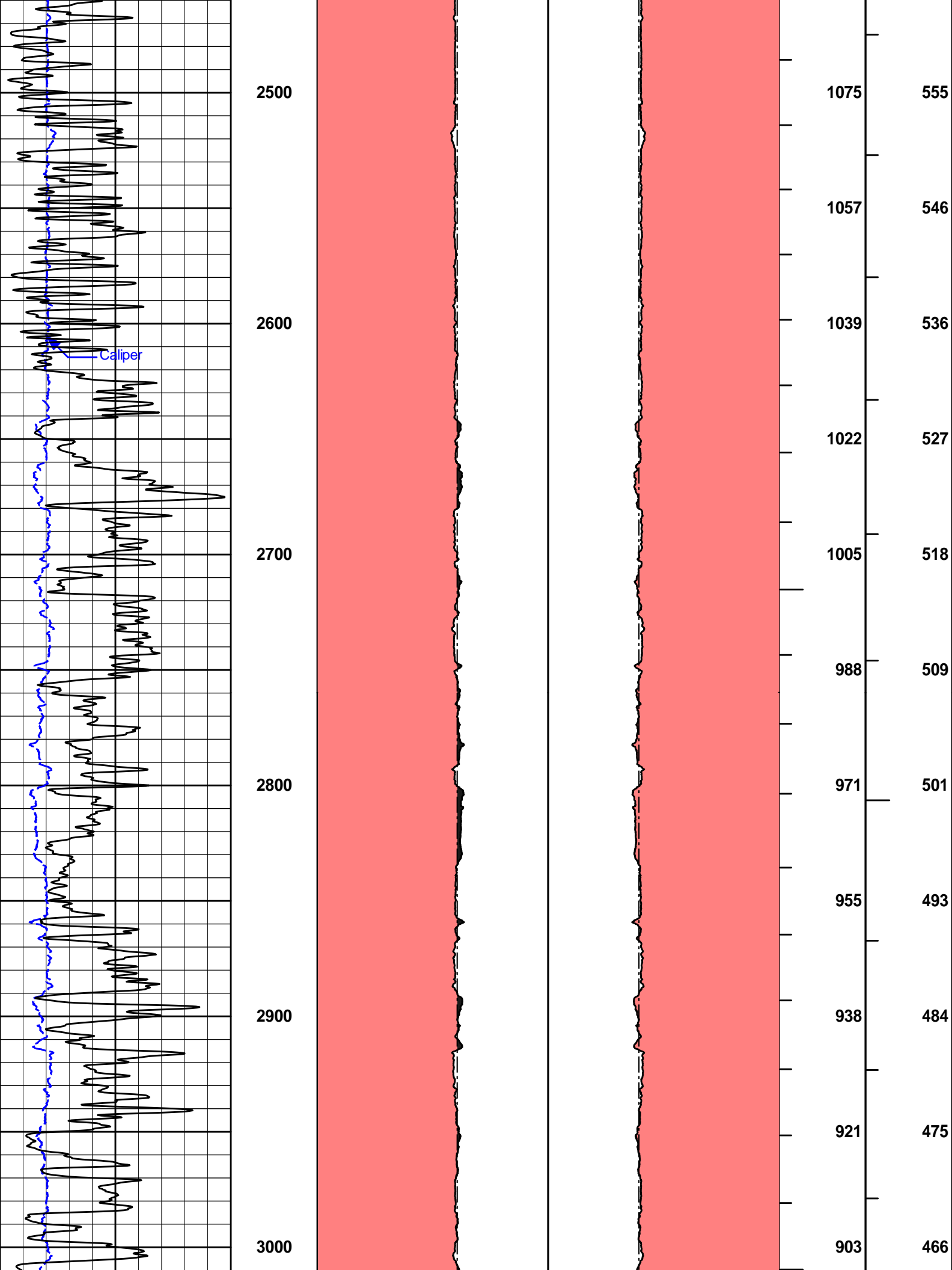
HALLIBURTON

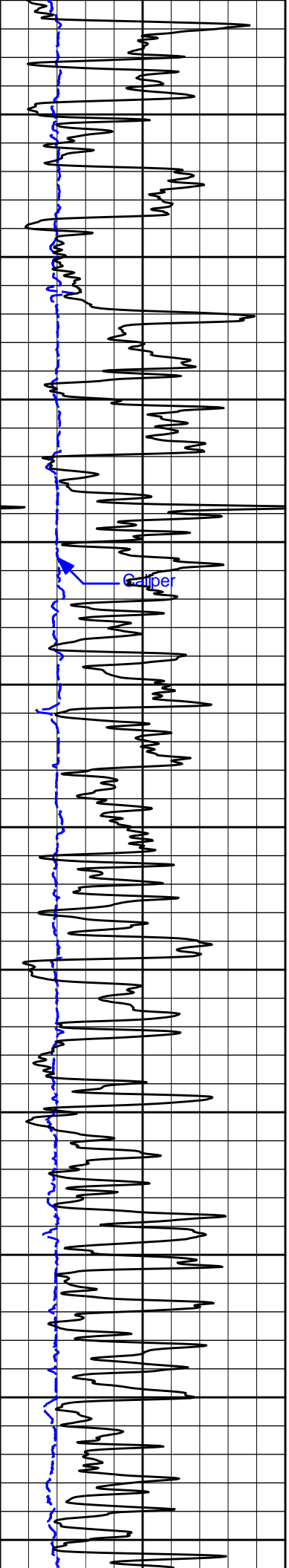
HALLIBURTON	Plot Time: 28-Mar-22 16:58:58
	Plot Range: 1765 ft to 5649.67 ft
	Data: 03-28-MERITWell Based\DAQ-0001-004\
	Plot File: \\LOCAL-103_01_MERIT\0001 RWCH-GTET-DSNT-SDLT-BSAT-ACRT\AHV\AHV Plot_INSITE_IQ

ANNULAR HOLE VOLUME PLOT









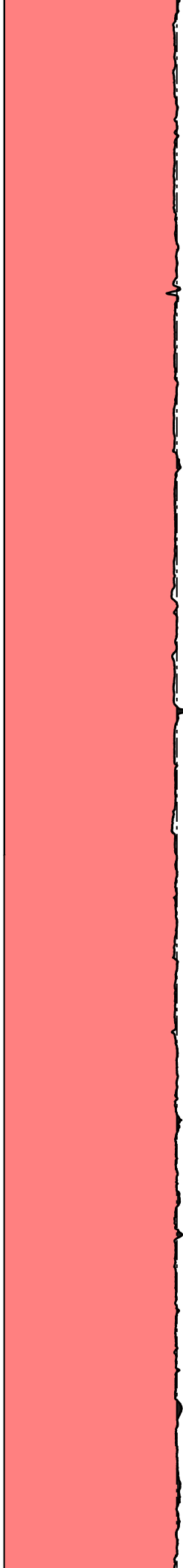
3100

3200

3300

3400

3500



886

869

851

834

816

799

782

764

747

730

714

457

448

439

430

420

411

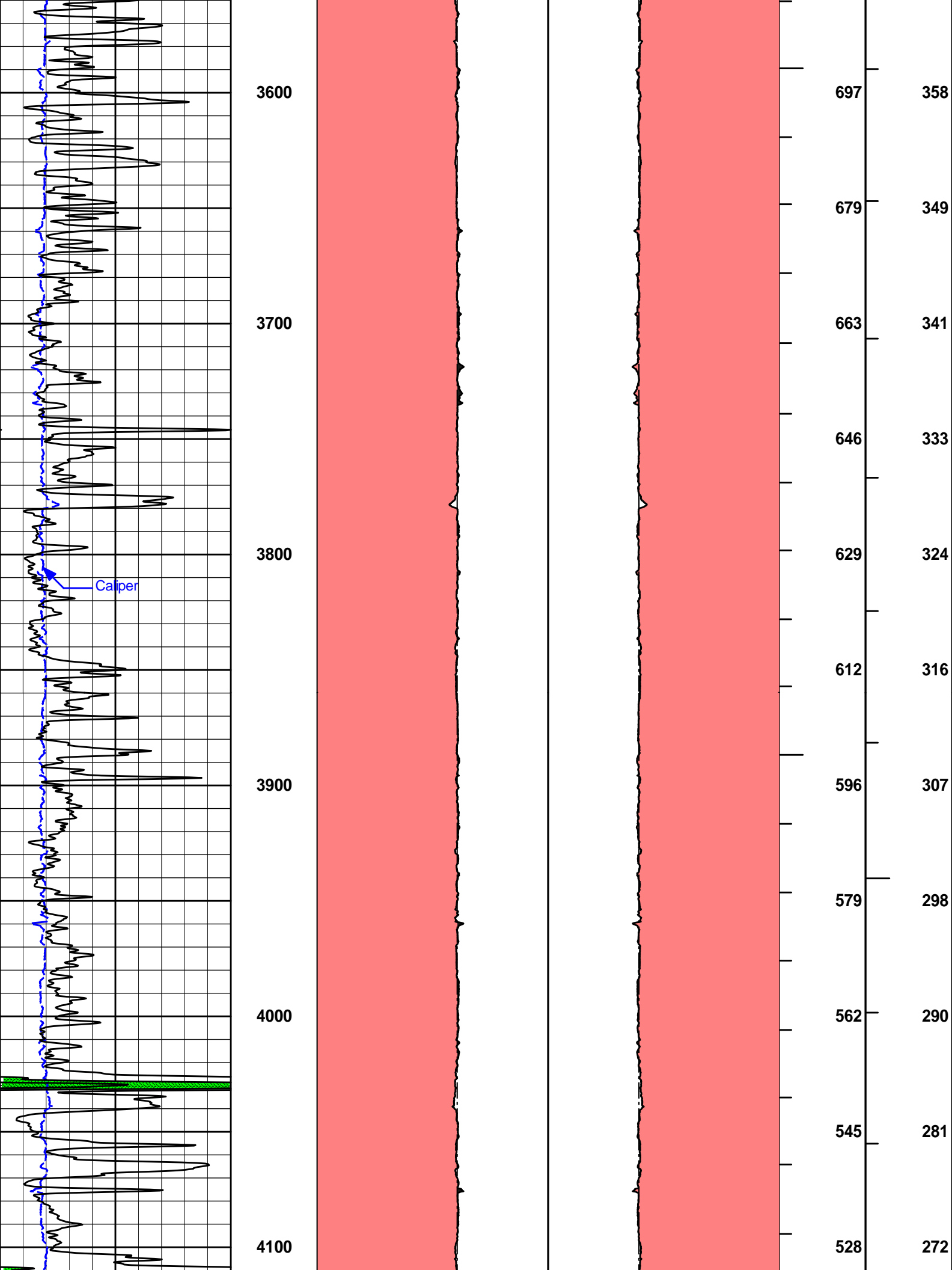
402

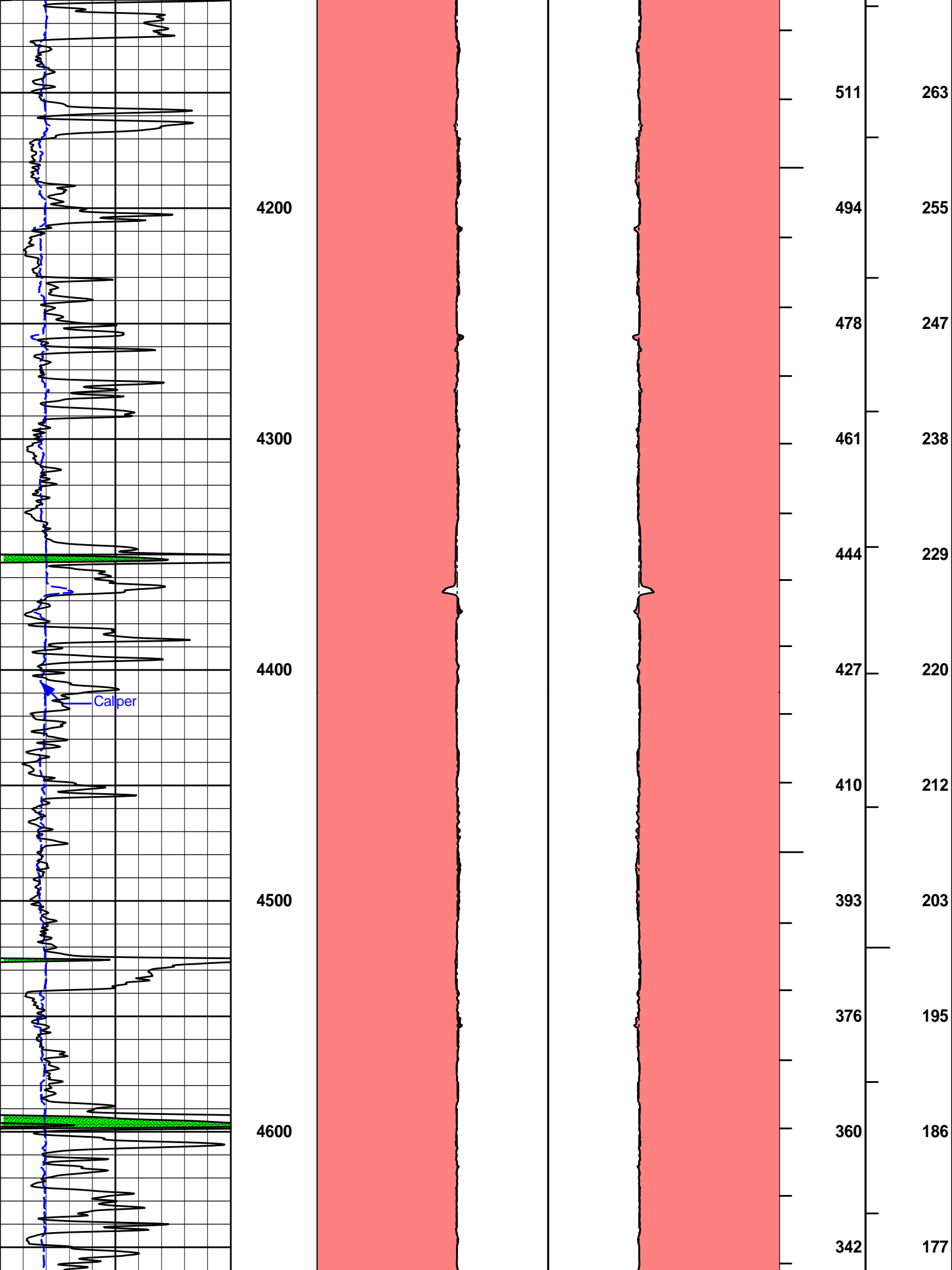
393

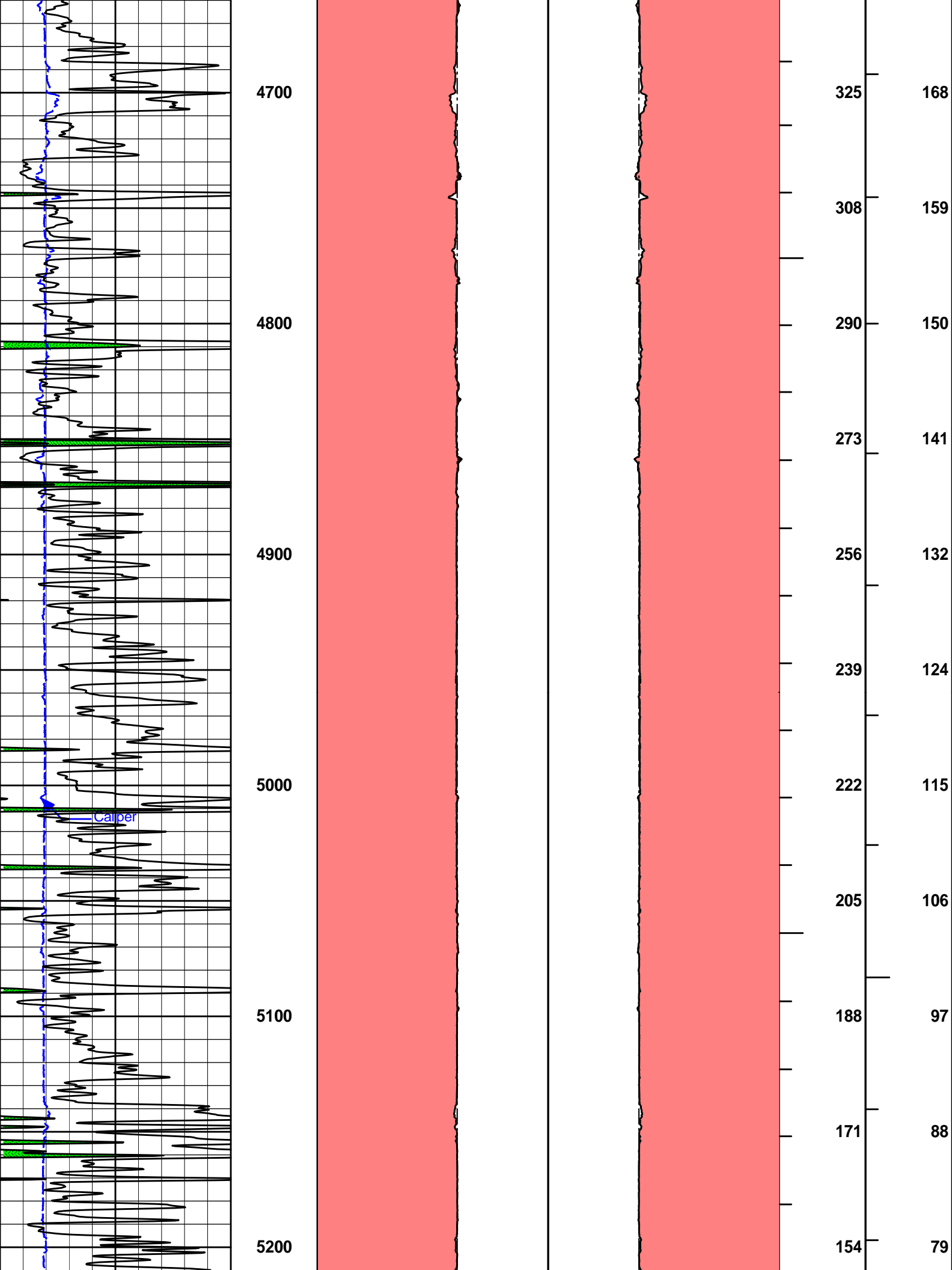
384

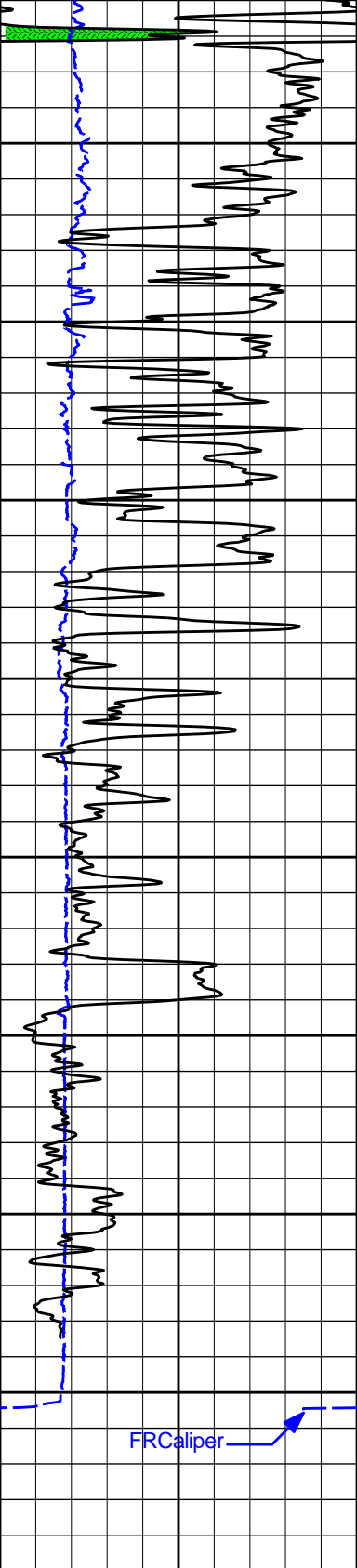
375

367









5300

5400

5500

5600

TD

136
117
100
83
67
50
33
17

70
60
51
42
34
25
17
8

FRCaliper

6	CALI	16
	inches	
0	Gamma API	150
	api	
SHALE		

1 : 600	ft
---------	----

20	CALI	0	0
	inches		
20	Bit Size	0	0
MUDCAKE			

20	CALI	20
	inches	
20	Bit Size	20
MUDCAKE		

BHVT	AHVT
------	------

HALLIBURTON

Plot Time: 28-Mar-22 16:59:01
 Plot Range: 1765 ft to 5649.67 ft
 Data: 03-28-MERIT\Well Based\DAQ-0001-004\
 Plot File: \\-LOCAL-03_01_MERIT0001 RWCH-GTET-DSNT-SDLT-BSAT-ACRT\AHV\AHV Plot_INSITE_IQ

ANNULAR HOLE VOLUME PLOT

HALLIBURTON

TOOL STRING DIAGRAM REPORT

Description	Overbody Description	O.D.	Diagram	Sensors @ Delays	Length	Accumulated Length
		Ø 2.310 in		Fishing Neck @ 75.72 ft	76.60 ft	76.60 ft
RWCH-12027542 135.00 lbs	Weak Point 12000 lbs- 111111111 0.01 lbs	Ø 3.625 in		Load Cell @ 72.91 ft BH Temperature @ 72.35 ft	6.25 ft	70.35 ft
		Ø 0.010 in*		Z-Accelerometer @ 69.90 ft		70.35 ft
GTET-11172469 165.00 lbs		Ø 3.625 in		GammaRay @ 64.29 ft	8.52 ft	61.83 ft
DSNT-11019643 174.00 lbs	DSN Decentralizer- 11020488 6.60 lbs	Ø 5.000 in* Ø 3.625 in		DSN Far @ 54.89 ft DSN Near @ 54.14 ft	9.69 ft	52.14 ft
SDLT-11014296 360.00 lbs	SDLT Pad-10763919 65.00 lbs Microlog Pad-11014296 8.00 lbs RAM-Cs137-11206141 1.00 lbs	Ø 4.500 in Ø 4.500 in* Ø 4.750 in* Ø 0.800 in*		Microlog @ 44.33 ft SDL Caliper @ 44.14 ft SDL @ 44.13 ft	10.81 ft	41.33 ft
Flex Joint - Pressure Comp- 11288767 140.00 lbs		Ø 3.625 in			5.97 ft	35.36 ft
	Centralizer 25-00000002 8.00 lbs	Ø 4.000 in*				35.36 ft

BSAT-10747681
300.00 lbs

Ø 3.625 in →

Receiver Array @ 26.84 ft
Sonic Receivers @ 26.84 ft

15.77 ft

Centralizer 25-00000001
8.00 lbs

Ø 4.000 in* →

19.58 ft

ACRt Instrument-
10937852
50.00 lbs

Ø 3.625 in →

5.03 ft

ALAT Standoff OD 6-
00000001
11.60 lbs

Ø 5.000 in* →

Mud Resistivity @ 13.19 ft

14.55 ft

ACRt Sonde-
10947895
200.00 lbs

Ø 3.625 in →

ACRt @ 9.21 ft

14.22 ft

SP Ring-10947895
0.00 lbs

Ø 3.625 in* →

SP @ 1.61 ft

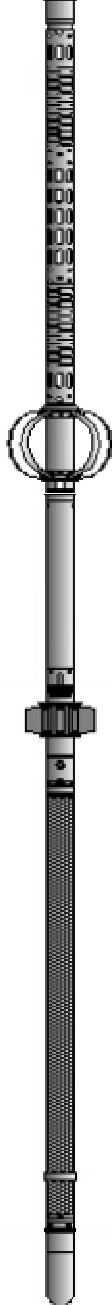
0.33 ft

Bull Nose-11111111
5.00 lbs

Ø 2.750 in →

0.33 ft

0.00 ft



Mnemonic	Tool Name	Serial Number	Weight (lbs)	Length (ft)	Accumulated Length (ft)	Max. Log. Speed (fpm)
RWCH	Releasable Wireline Cable Head	12027542	135.00	6.25	70.35	300.00
WP12K	Weak Point 12000 lbs	11111111	0.01	0.01	* 71.15	300.00
GTET	Gamma Telemetry Tool	11172469	165.00	8.52	61.83	60.00
DSNT	Dual Spaced Neutron	11019643	174.00	9.69	52.14	60.00
DCNT	DSN Decentralizer	11020488	6.60	5.13	* 55.47	300.00
SDLT	Spectral Density Tool	11014296	360.00	10.81	41.33	60.00
SDLP	Density Insite Pad	10763919	65.00	2.55	* 43.54	60.00
Cs137	Logging Source, SDLT-I, 1.78 Ci - Cs137	11206141	1.00	0.80	* 43.77	300.00
MICP	Microlog Pad	11014296	8.00	1.00	* 43.83	60.00
FLEX	Flex Joint - Pressure Compensated	11288767	140.00	5.97	35.36	300.00
BSAT	Borehole Sonic Array Tool	10747681	300.00	15.77	19.58	60.00
OBCEN	Centralizer - 25 in. Overbody	00000001	8.00	2.08	* 19.87	300.00
OBCEN	Centralizer - 25 in. Overbody	00000002	8.00	2.08	* 32.48	300.00
ACRt	Array Compensated True Resistivity Instrument Section	10937852	50.00	5.03	14.55	120.00
ACRt	Array Compensated True Resistivity Sonde Section	10947895	200.00	14.22	0.33	120.00
SP	SP Ring	10947895	0.00	0.25	* 1.61	300.00
ALATS	Array Laterolog Tool OD 5 Standoff	00000001	11.60	1.00	* 13.21	60.00
BLNS	Bull Nose	11111111	5.00	0.33	0.00	300.00

Total **1,637.21** **76.60**

* Not included in Total Length and Length Accumulation.

COMPANY	MERIT ENERGY COMPANY, LLC		
WELL	WENU 604		
FIELD	EUBANK NORTH		
COUNTY	HASKELL	STATE	KANSAS
HALLIBURTON		ANNULAR HOLE VOLUME 5.5 INCH CASING	