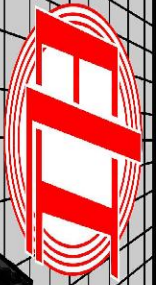


MICRO LOG



Company DOUBLE D'S LLC.  
 Well STEPHENS #1  
 Field WALLACE  
 County ELLIS State KANSAS

Location: 2290' FNL & 2110' FEL  
 NE-SW-SW-NE  
 API #: 15-051-27032-0000  
 SEC 33 TWP 15S RGE 20W  
 Permanent Datum GROUND LEVEL Elevation 2246  
 Log Measured From KELLY BUSHING 8' A.G.L.  
 Drilling Measured From KELLY BUSHING  
 Other Services CDL/CNL DIL  
 Elevation K.B. 2254 D.F. 2252 G.L. 2246

Date	4/19/22	
Run Number	TWO	
Depth Driller	4035	
Depth Logger	4038	
Bottom Logged Interval	4036	
Top Log Interval	3000	
Casing Driller	8 5/8"@224'	
Casing Logger	224	
Bit Size	7 7/8"	
Type Fluid in Hole	CHEMICAL MUD	CHLORIDES 7,100 PPM
Density / Viscosity	9.2/50	
pH / Fluid Loss	10.0/7.2	
Source of Sample	FLOWLINE	
Rm @ Meas. Temp	0.410@72F	
Rmf @ Meas. Temp	.308@72F	
Rmc @ Meas. Temp	.492@72F	
Source of Rmf / Rmc	MEASUREMENT	
Rm @ BHT	.254@116F	
Time Circulation Stopped	4 HOURS	
Time Logger on Bottom	9:30 A.M.	
Maximum Recorded Temperature	116F	
Equipment Number	922339	
Location	HAYS, KANSAS	
Recorded By	JEFF LUEBBERS	COLE ROBBEN
Witnessed By	JASON ALM	

<<< Fold Here >>>

All interpretations are opinions based on inferences from electrical or other measurements and we cannot and do not guarantee the accuracy or correctness of any interpretation, and we shall not, except in the case of gross or willful negligence on our part, be liable or responsible for any loss, costs, damages, or expenses incurred or sustained by anyone resulting from any interpretation made by any of our officers, agents or employees. These interpretations are also subject to our general terms and conditions set out in our current Price Schedule.

15-051-27032-0000 Comments

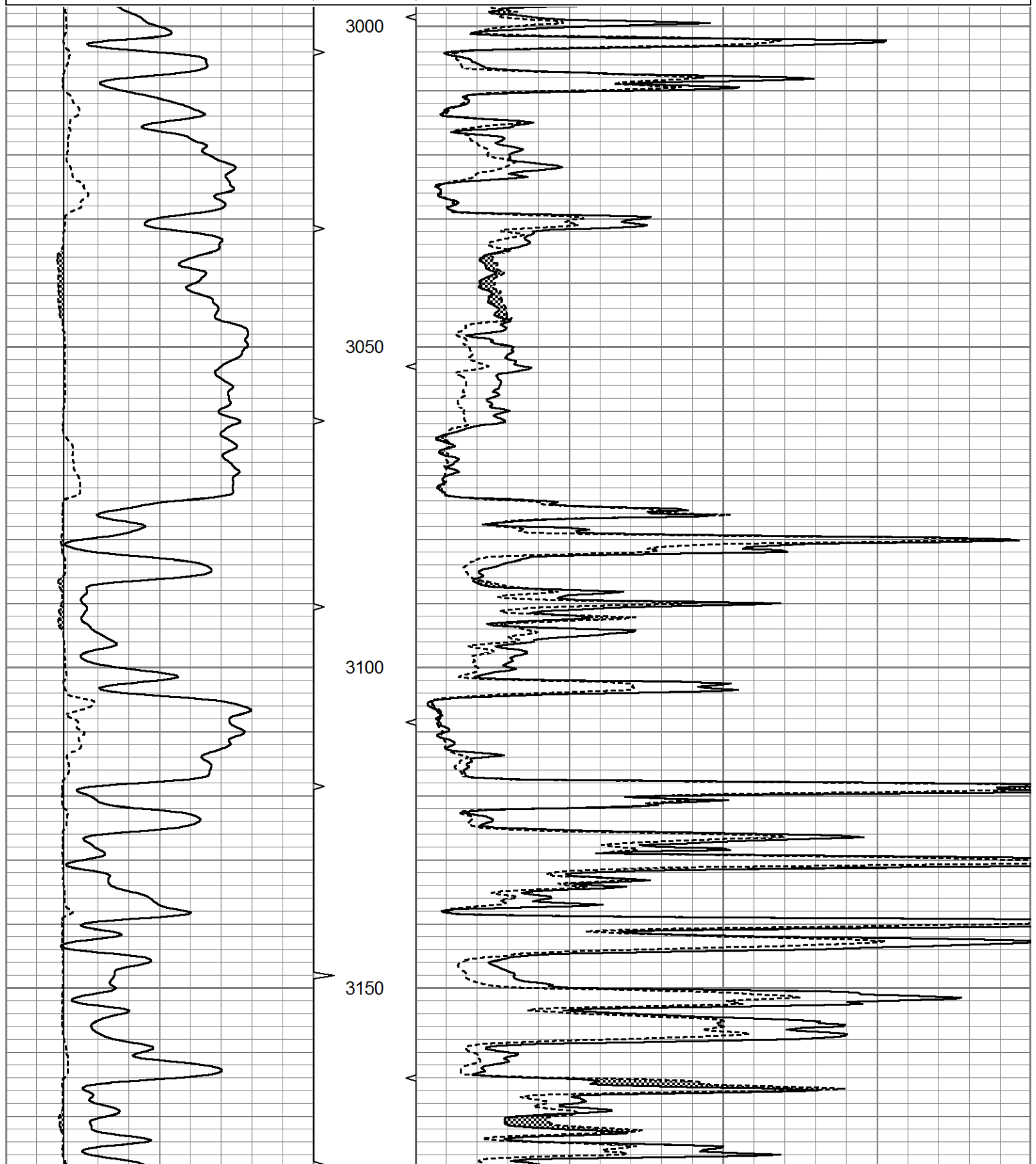
THANK YOU FOR USING ELI WIRELINE HAYS, KANSAS (785) 628-6395  
 DIRECTIONS  
 ELLIS, KS. S ON BLACKTOP TO CO LINE, 1 E, 1/2 N, W INTO

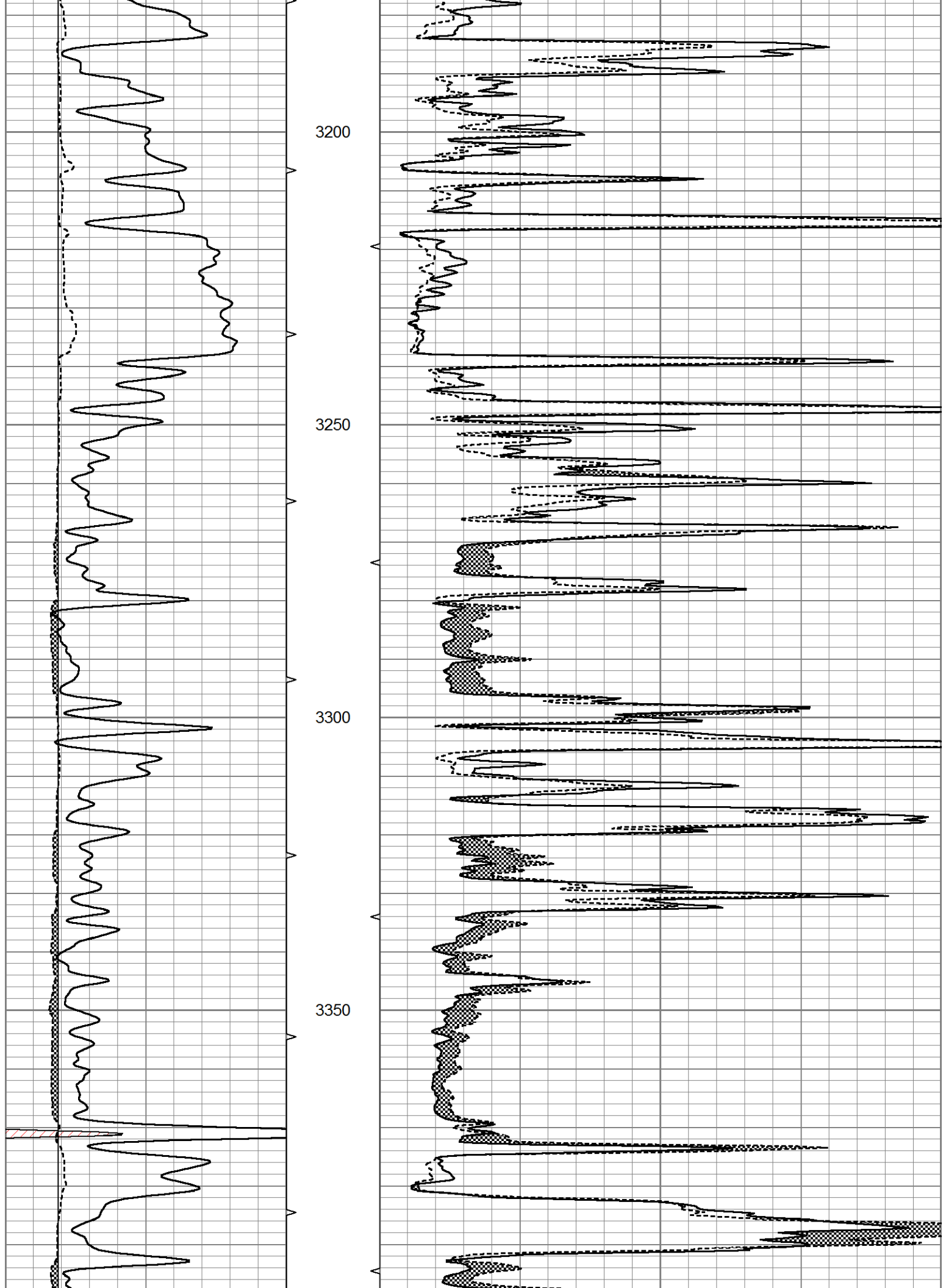


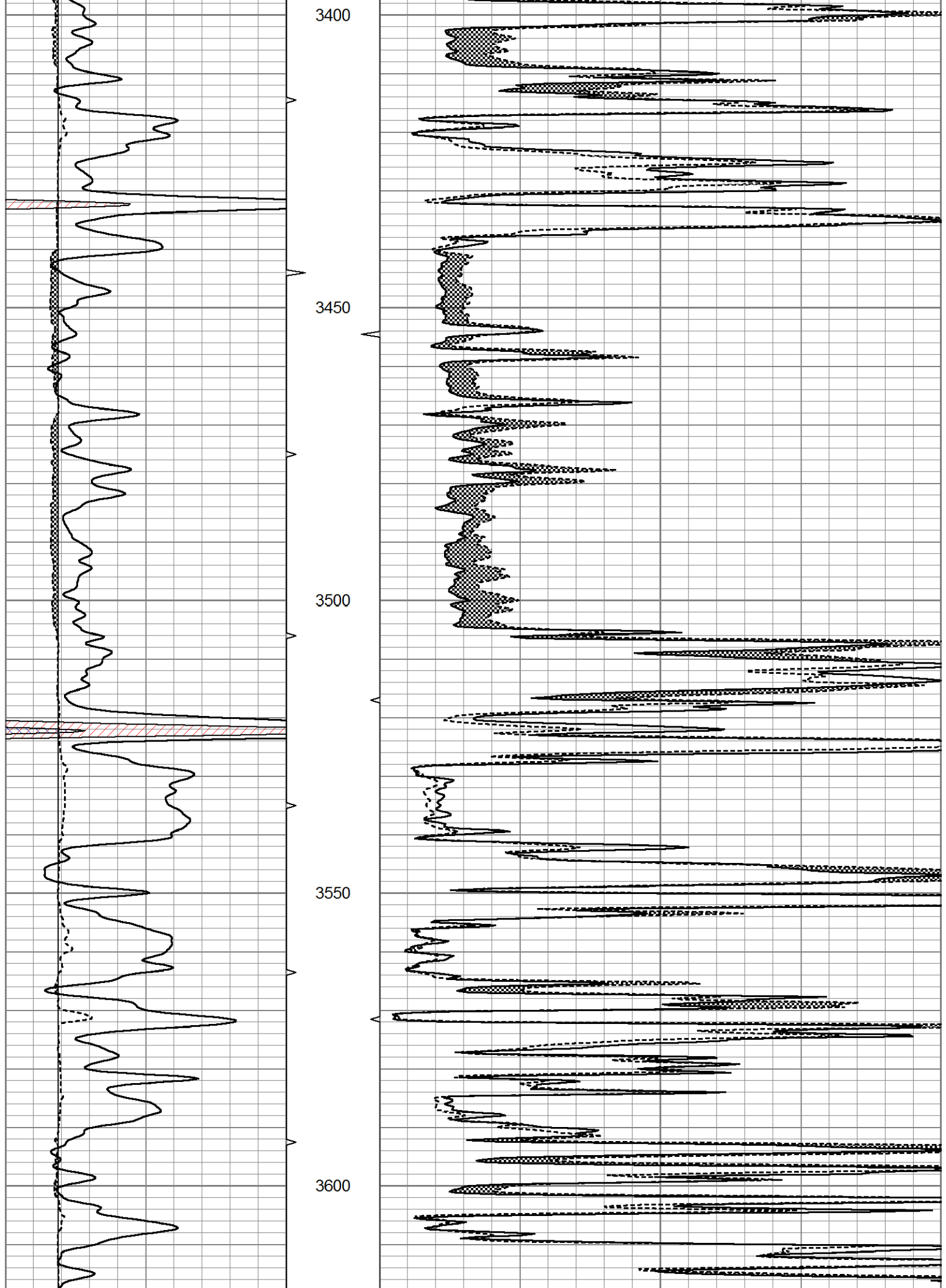
MAIN SECTION

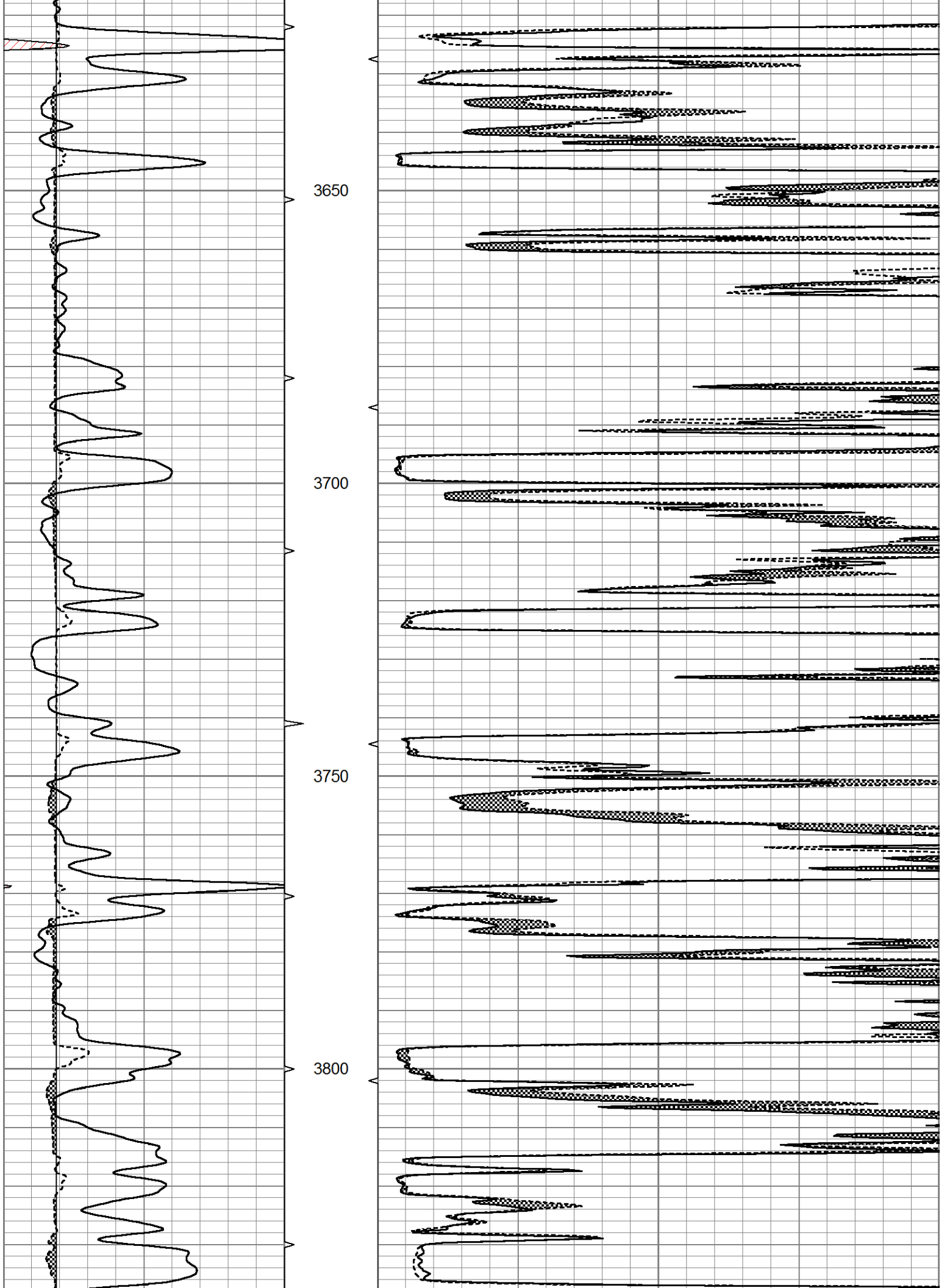
Database File 6330ddn.db  
 Dataset Pathname pass6.1  
 Presentation Format micro  
 Dataset Creation Tue Apr 19 10:15:47 2022  
 Charted by Depth in Feet scaled 1:240

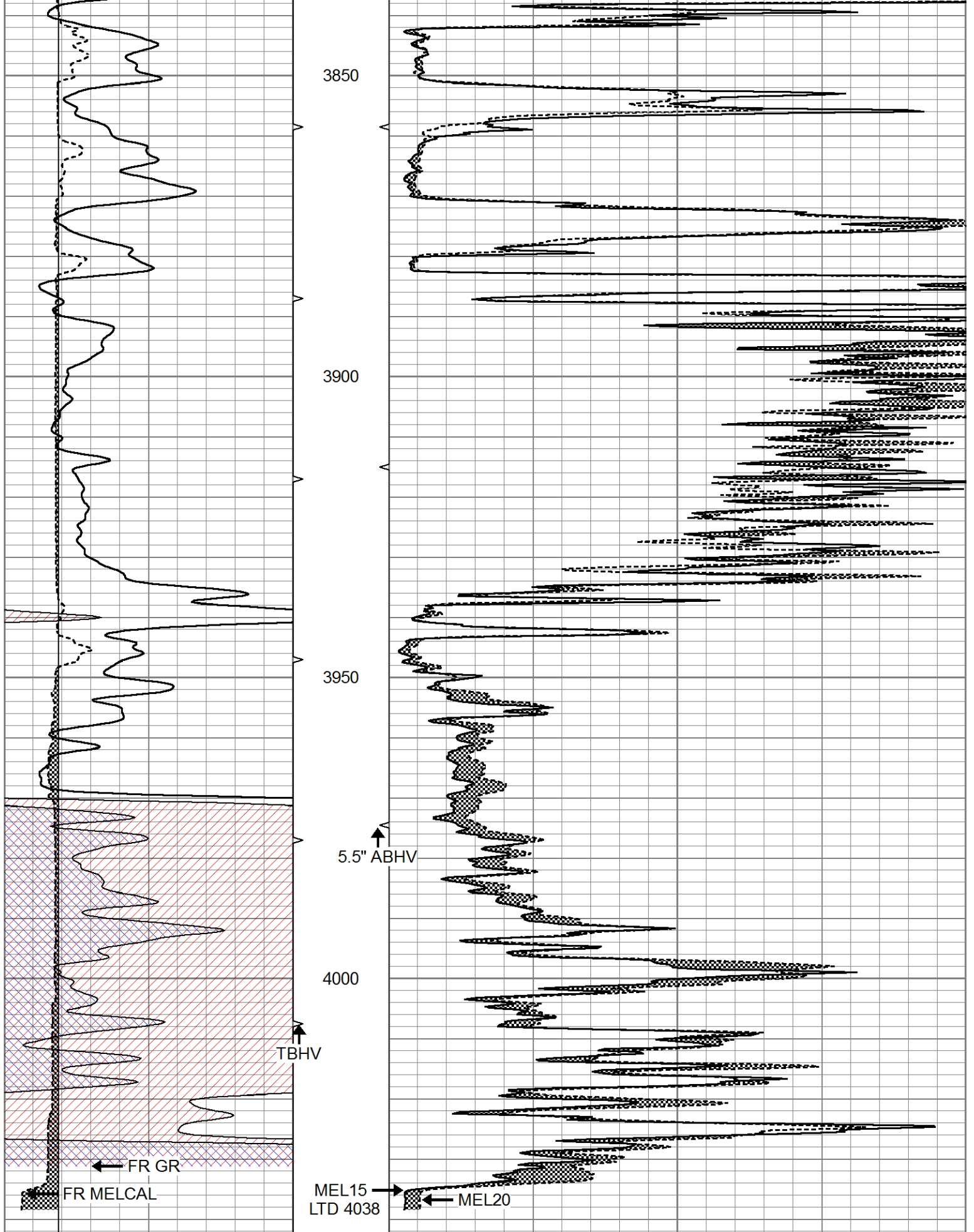
0	GR (GAPI)	150	ABHV	0	MEL20 (Ohm-m)	40
6	MELCAL (in)	16	10 (ft3)	0	MEL15 (Ohm-m)	40
			ABHV			
			0 (ft3)	10		











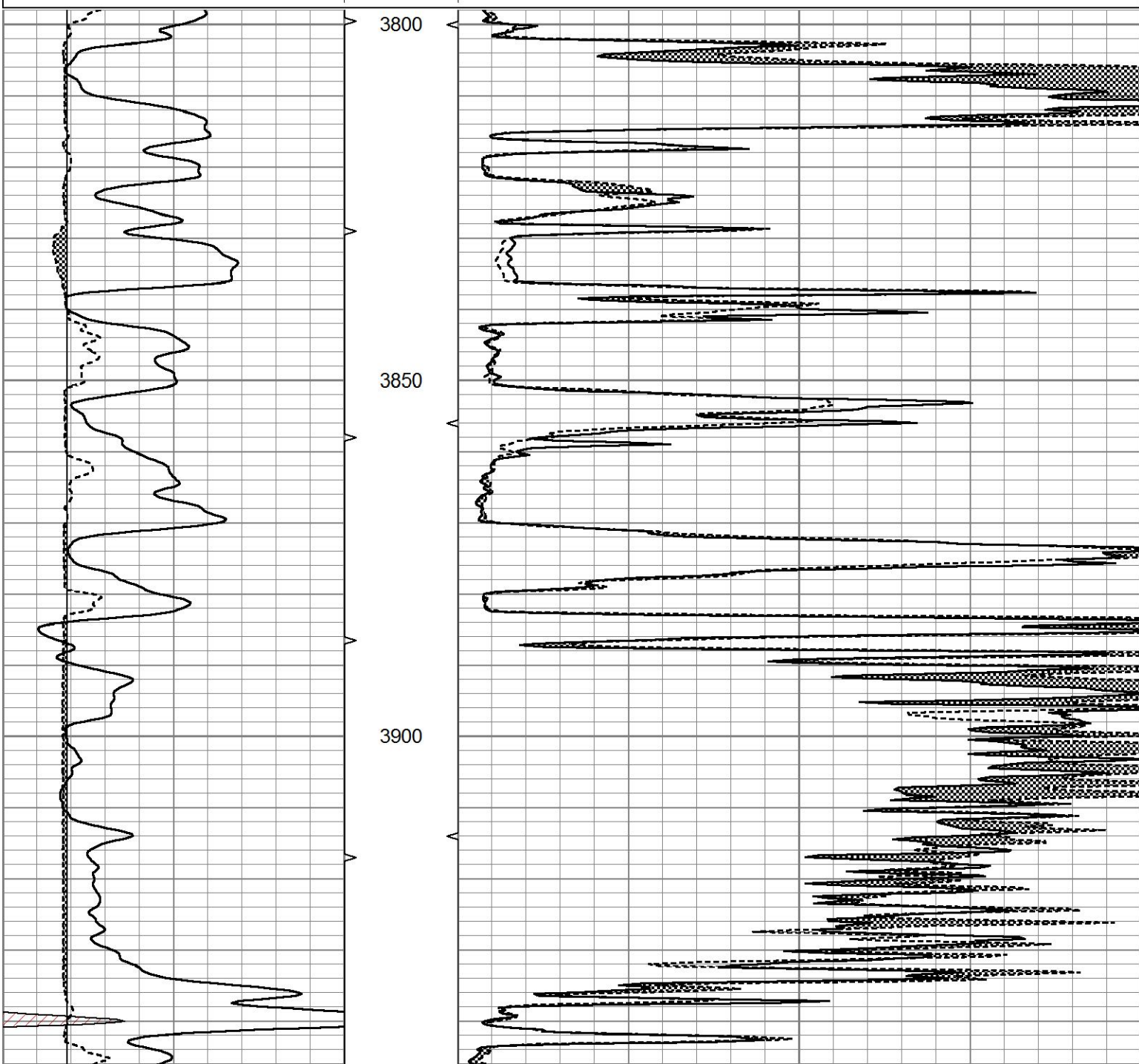
0	GR (GAPI)	150	ABHV	0	MEL20 (Ohm-m)	40
6	MELCAL (in)	16	10 (ft3)	0	MEL15 (Ohm-m)	40
			ABHV			

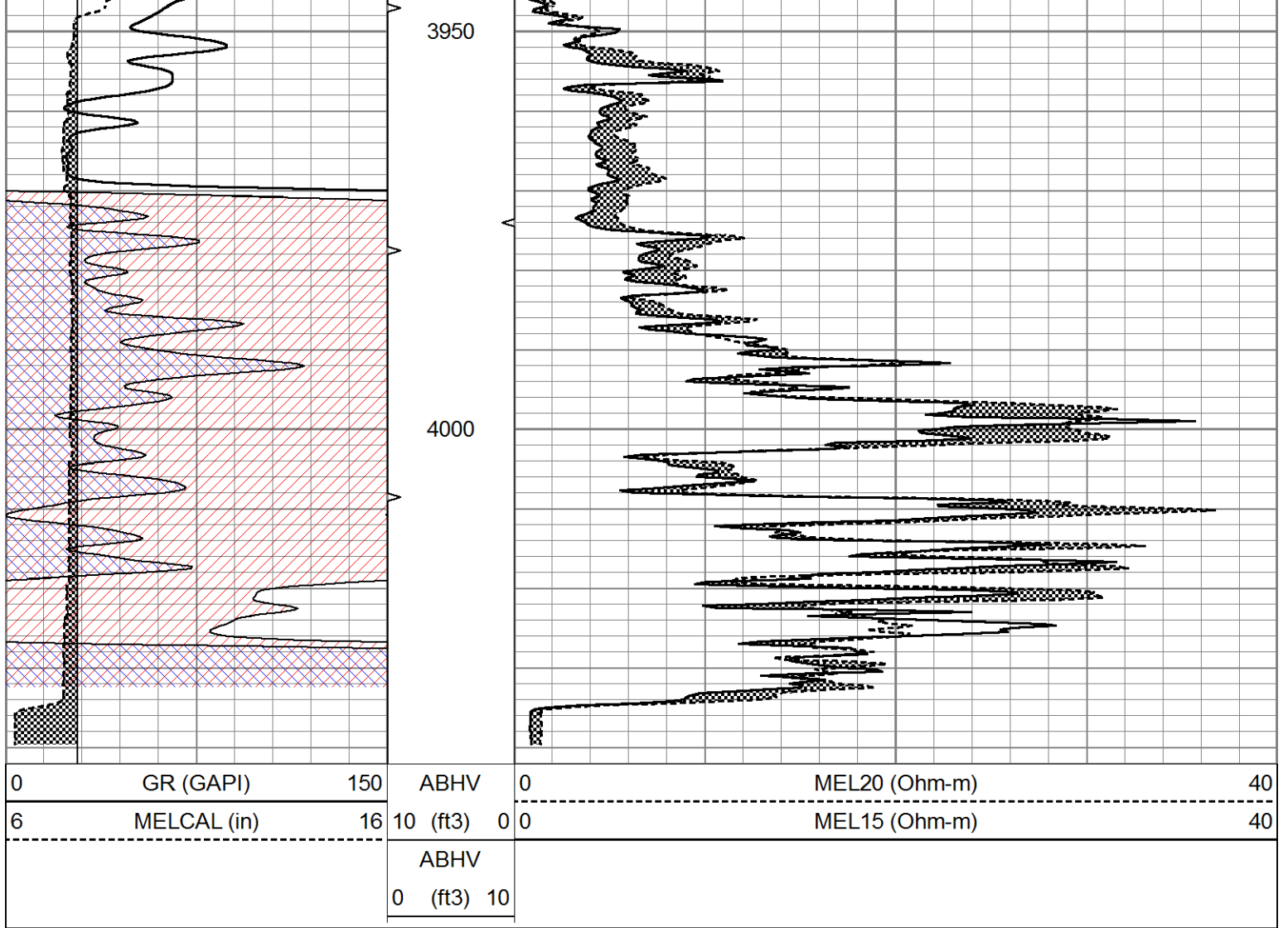


# REPEAT SECTION

Database File 6330ddn.db  
 Dataset Pathname pass5.2  
 Presentation Format micro  
 Dataset Creation Tue Apr 19 10:09:41 2022  
 Charted by Depth in Feet scaled 1:240

0	GR (GAPI)	150	ABHV	0	MEL20 (Ohm-m)	40
6	MELCAL (in)	16	10 (ft3)	0 0	MEL15 (Ohm-m)	40
			ABHV			
			0 (ft3) 10			





### Calibration Report

Database File     6330ddn.db  
 Dataset Pathname     pass6.1  
 Dataset Creation     Tue Apr 19 10:15:47 2022

#### MICRO Calibration Report

Serial Number:     070911  
 Tool Model:     ProbeN  
 Performed:     Sun Apr 03 07:43:56 2022

Caliper Calibration:     Gain=4.706     Offset=2.118

	Low Cal	High Cal
References	8.000	16.000
Readings	1.250	2.950

1.5" Calibration:     Gain=35.000     Offset=0.000

	Low Cal	High Cal
References	0.000	20.000
Readings	0.001	1.291

2" Calibration:     Gain=42.000     Offset=0.000

	Low Cal	High Cal
References	0.000	20.000
Readings	0.003	1.103

#### Gamma Ray Calibration Report

Serial Number: 070558  
Tool Model: OPEN\_GR  
Performed: Tue Mar 22 20:25:25 2022

Calibrator Value: 1.0 GAPI

Background Reading: 0.0 cps  
Calibrator Reading: 1.0 cps

Sensitivity: 0.3000 GAPI/cps