



**COMPENSATED
DENSITY / NEUTRON
LOG**

Company **DOUBLE D'S LLC.**
Well **STEPHENS #1**
Field **WALLACE**
County **ELLIS** State **KANSAS**

Location: **2290' FNL & 2110' FEL
NE-SW-SW-NE** API #: **15-051-27032-0000**
Permanent Datum **GROUND LEVEL** Elevation **2246**
Log Measured From **KELLY BUSHING 8' A.G.L.**
Drilling Measured From **KELLY BUSHING**

SEC 33 TWP 15S RGE 20W

Other Services
DILMEL

Elevation
K.B. 2254
D.F. 2252
G.L. 2246

Date	4/19/22
Run Number	ONE
Depth Driller	4035
Depth Logger	4038
Bottom Logged Interval	4014
Top Log Interval	3000
Casing Driller	8 5/8"@224'
Casing Logger	224
Bit Size	7 7/8"
Type Fluid in Hole	CHEMICAL MUD
Density / Viscosity	9.2/50
pH / Fluid Loss	10.0/7.2
Source of Sample	FLOWLINE
Rm @ Meas. Temp	0.410@72F
Rmf @ Meas. Temp	.308@72F
Rmc @ Meas. Temp	.492@72F
Source of Rmf / Rmc	MEASUREMENT
Rm @ BHT	.254@116F
Time Circulation Stopped	2 HOURS
Time Logger on Bottom	7:30 A.M.
Maximum Recorded Temperature	116F
Equipment Number	922339
Location	HAYS, KANSAS
Recorded By	JEFF LUEBBERS
Witnessed By	JASON ALM
	COLE ROBBEN

<<< Fold Here >>>

All interpretations are opinions based on inferences from electrical or other measurements and we cannot and do not guarantee the accuracy or correctness of any interpretation, and we shall not, except in the case of gross or willful negligence on our part, be liable or responsible for any loss, costs, damages, or expenses incurred or sustained by anyone resulting from any interpretation made by any of our officers, agents or employees. These interpretations are also subject to our general terms and conditions set out in our current Price Schedule.

15-051-27032-0000 Comments

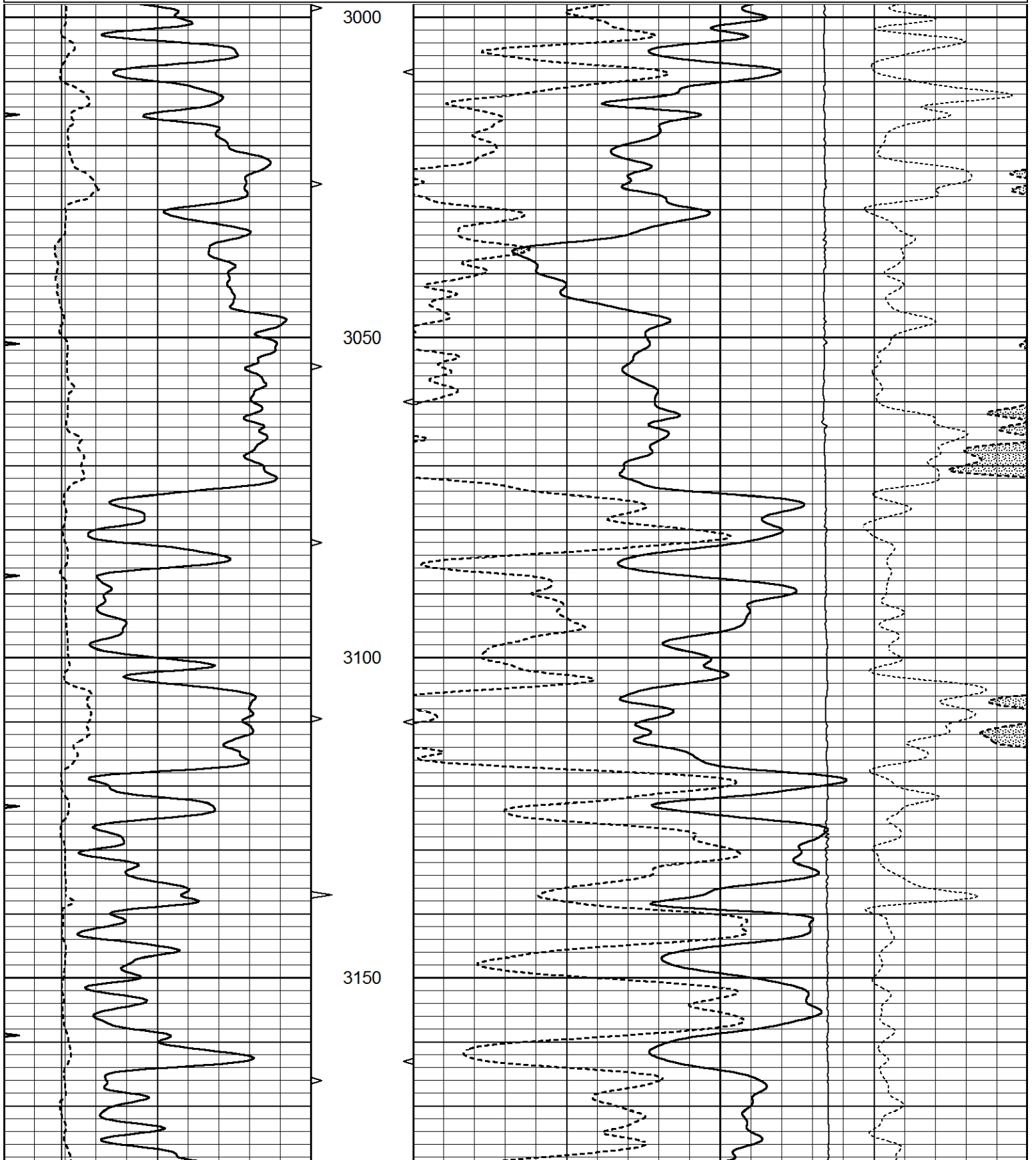
THANK YOU FOR USING ELI WIRELINE HAYS, KANSAS (785) 628-6395
DIRECTIONS
ELLIS, KS. S ON BLACKTOP TO CO LINE, 1 E, 1/2 N, W INTO

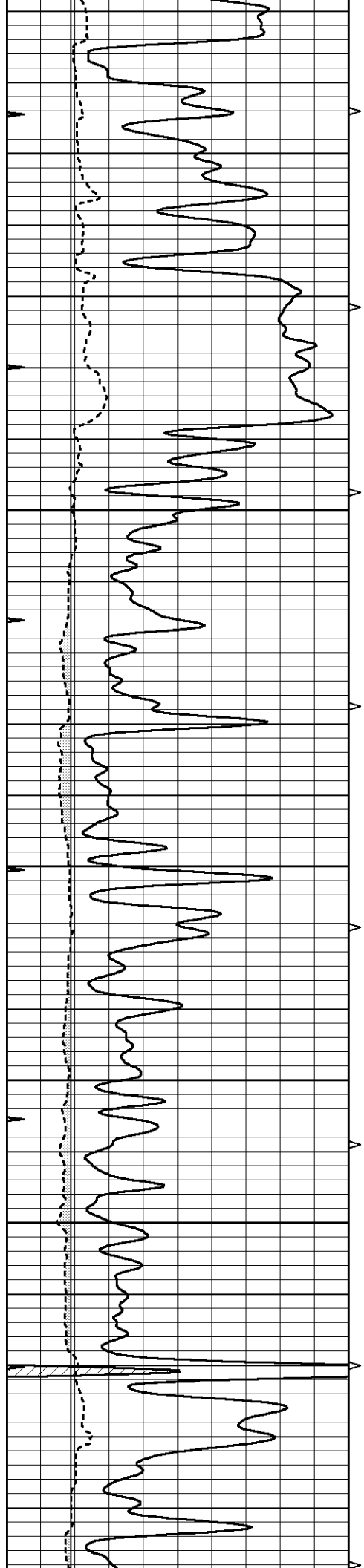


MAIN SECTION

Database File 6330ddn.db
 Dataset Pathname pass3.1M
 Presentation Format den_neu
 Dataset Creation Tue Apr 19 08:50:11 2022
 Charted by Depth in Feet scaled 1:240

0	GAMMA RAY (GAPI)	150	ABHV	30	COMPENSATED DENSITY (pu)	-10	
6	DCAL (in)	16	10 (ft3)	0	COMPENSATED NEUTRON (pu)	-10	
0	MINMK	20	TBHV		-0.25 CORRECTION (g/cc)	0.25	
			0 (ft3)	10	0	LTEN (lb)	5000



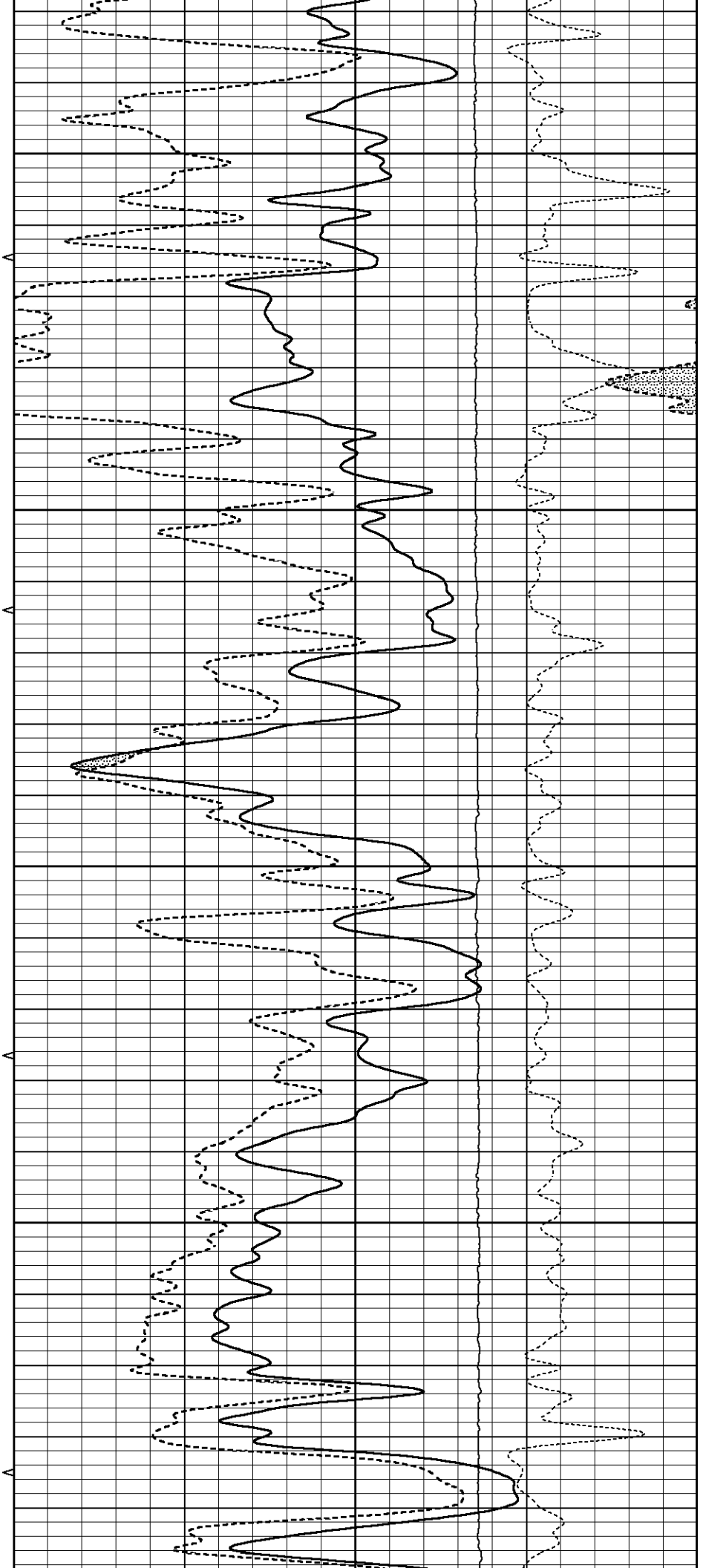


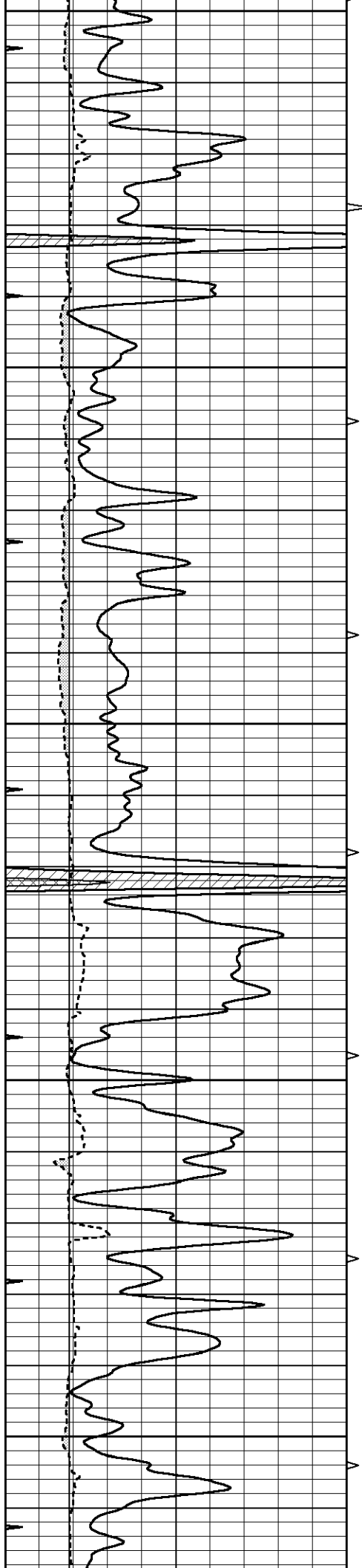
3200

3250

3300

3350





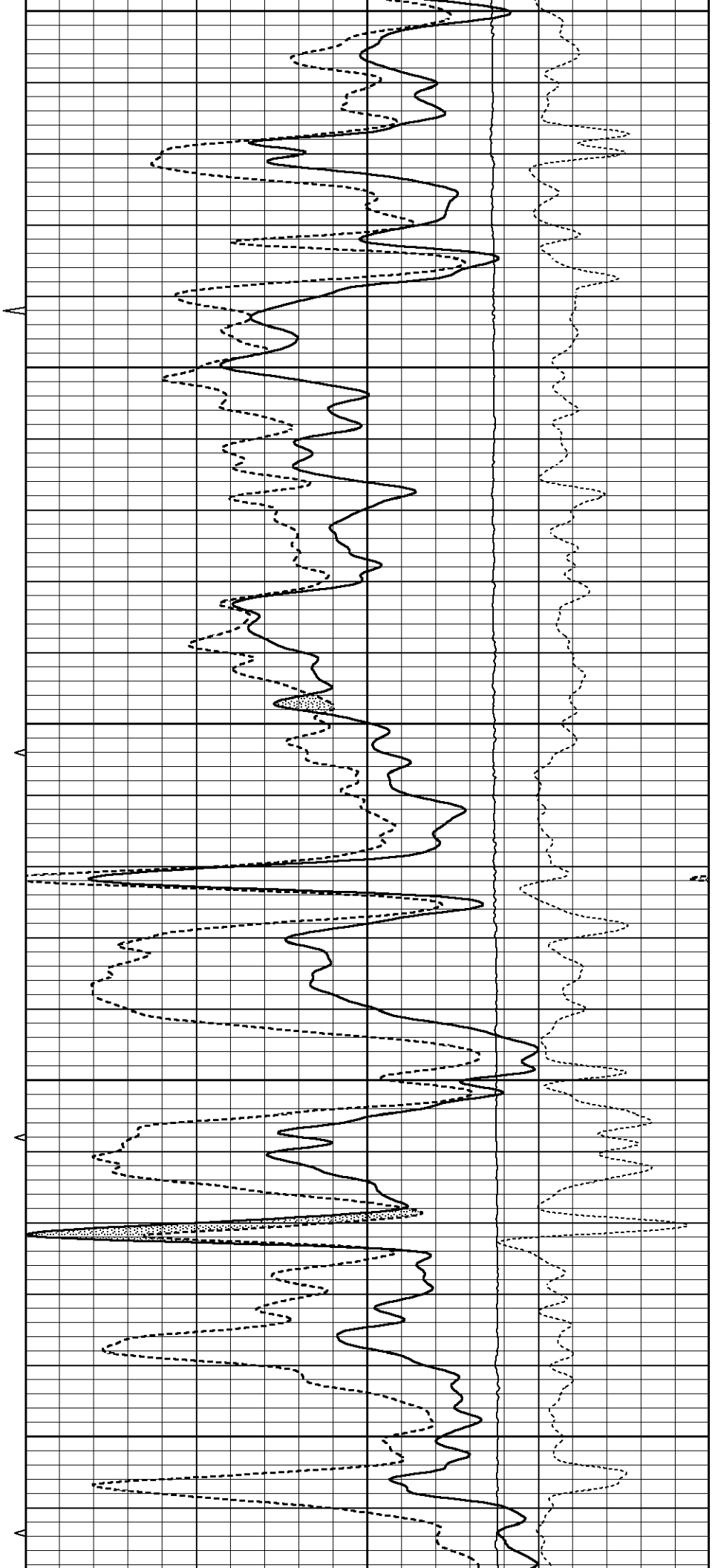
3400

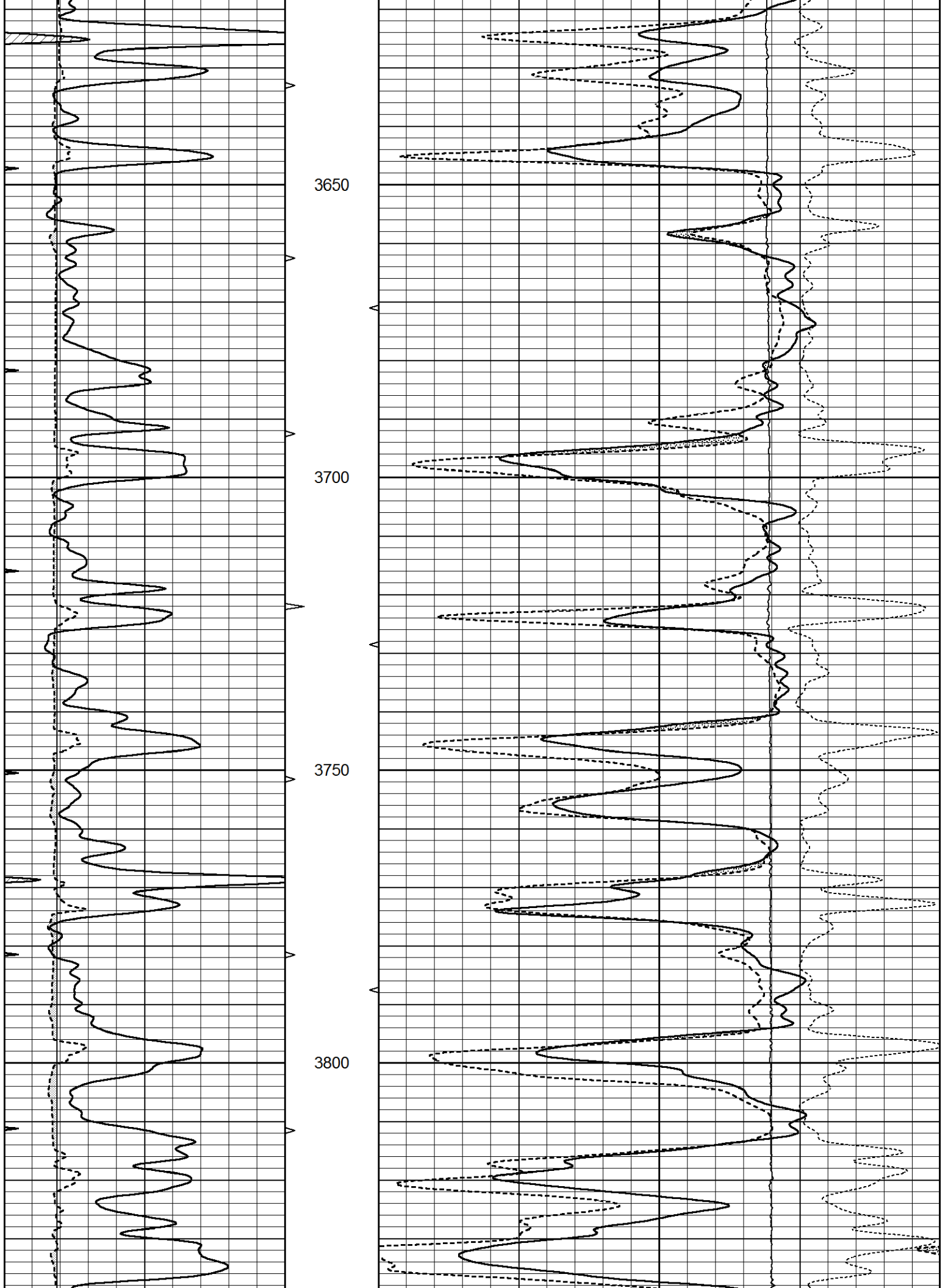
3450

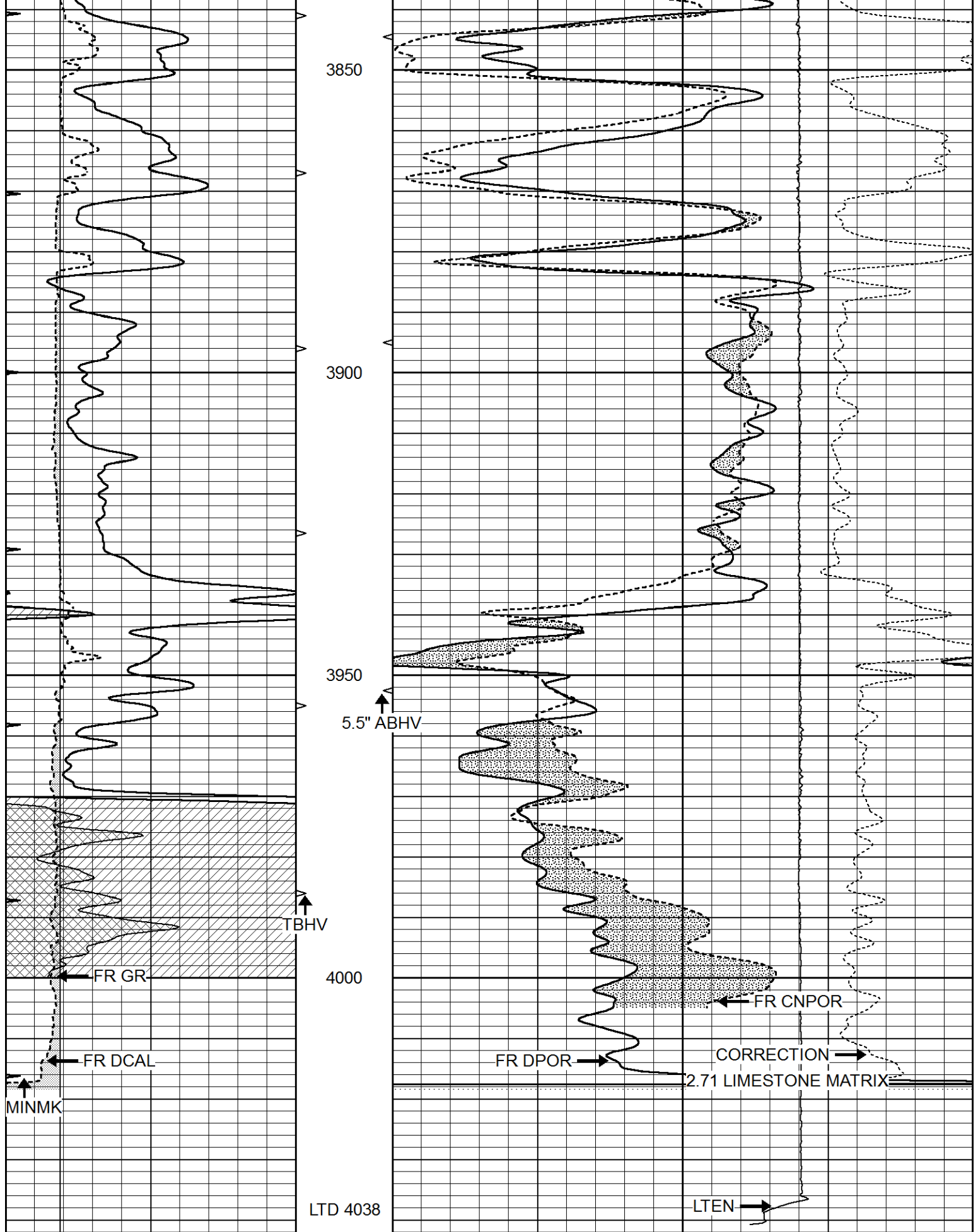
3500

3550

3600







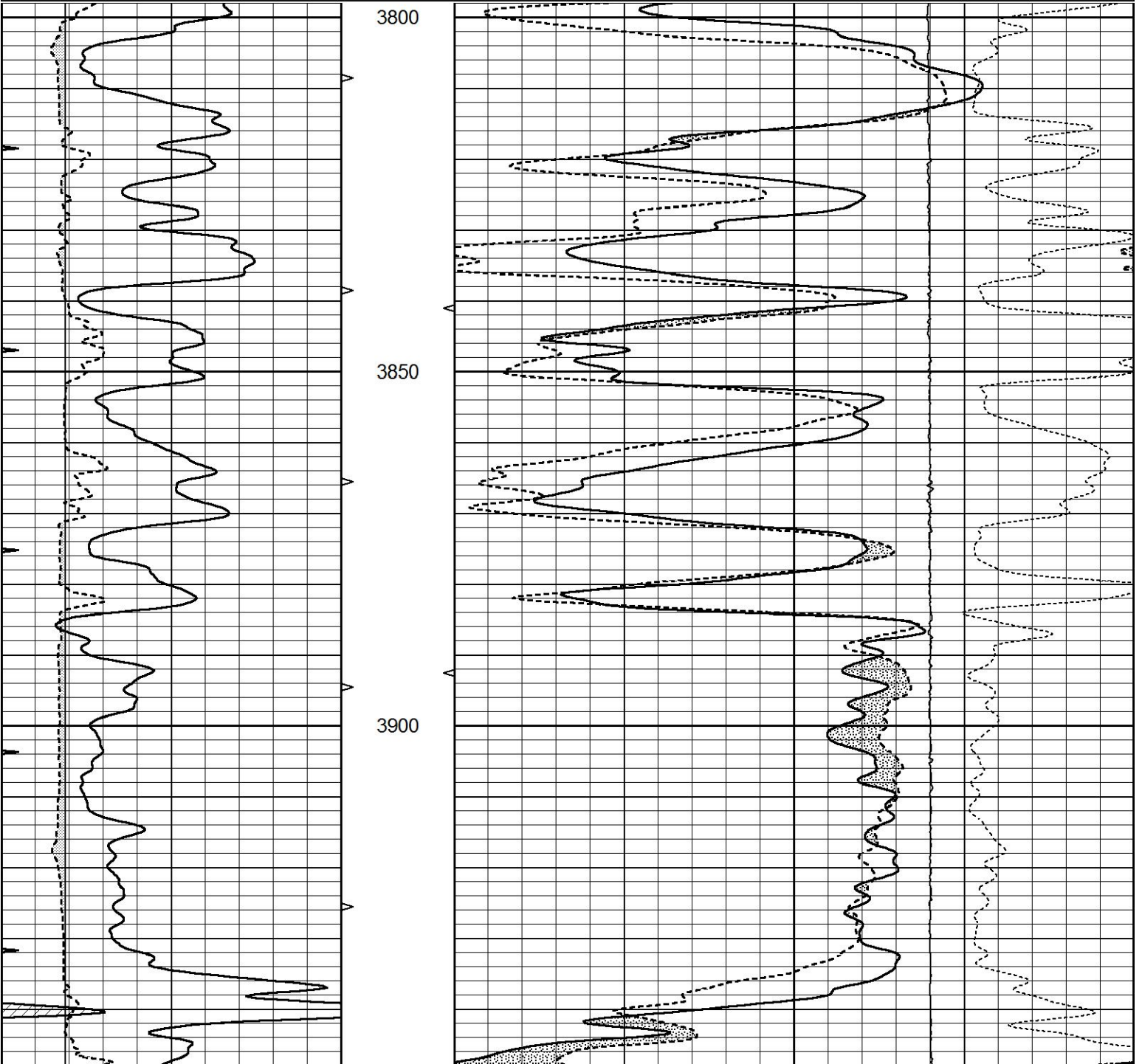
0	GAMMA RAY (GAPI)	150	ABHV	30	COMPENSATED DENSITY (pu)	-10	
6	DCAL (in)	16	10 (ft3)	0 30	COMPENSATED NEUTRON (pu)	-10	
0	MINMK	20	TBHV		-0.25	CORRECTION (g/cc)	0.25
					0	LTEN (%)	5000

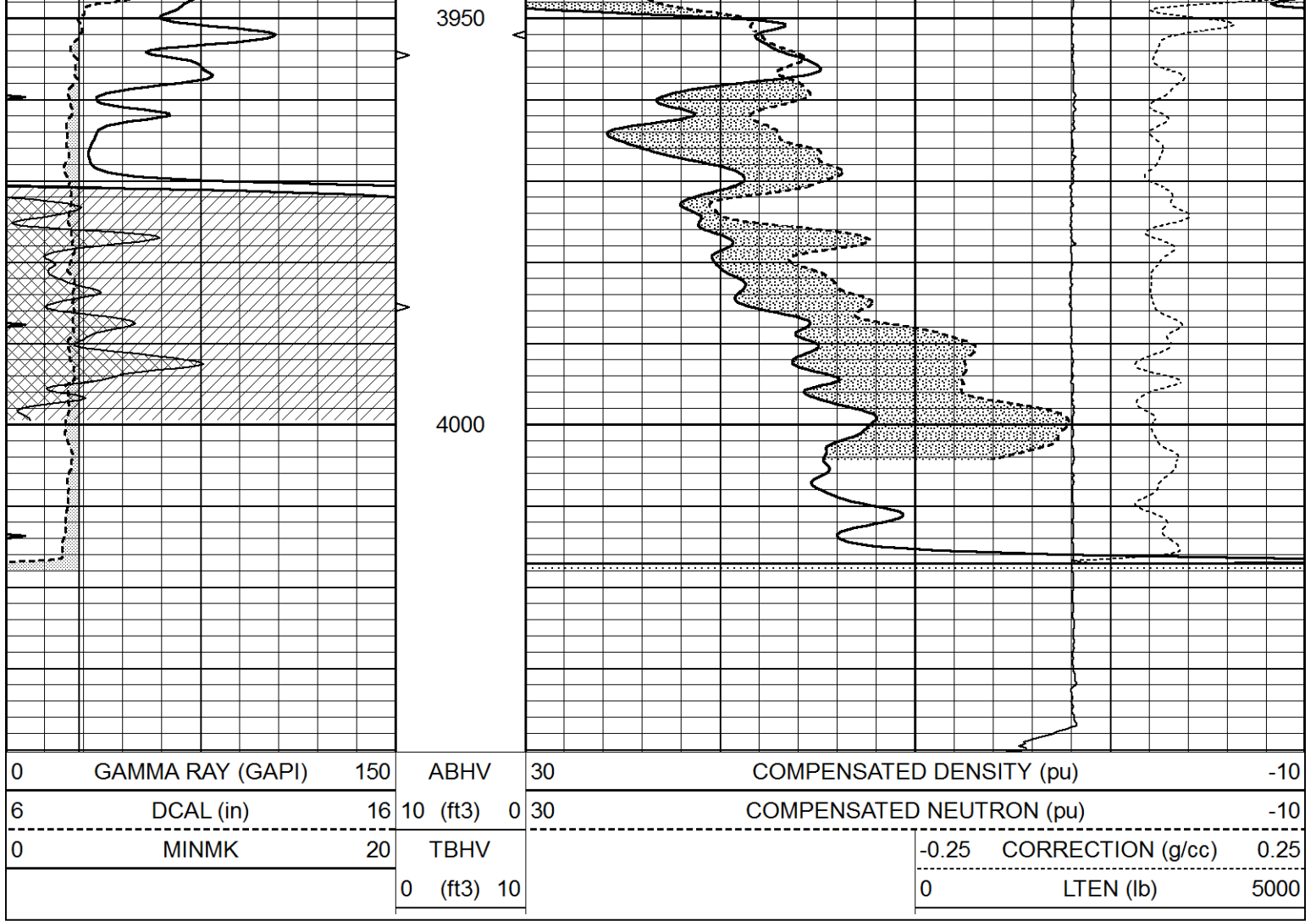


REPEAT SECTION

Database File 6330ddn.db
 Dataset Pathname pass2.8
 Presentation Format den_neu
 Dataset Creation Tue Apr 19 07:43:22 2022
 Charted by Depth in Feet scaled 1:240

0	GAMMA RAY (GAPI)	150	ABHV	30	COMPENSATED DENSITY (pu)	-10	
6	DCAL (in)	16	10 (ft3)	0 30	COMPENSATED NEUTRON (pu)	-10	
0	MINMK	20	TBHV		-0.25 CORRECTION (g/cc)	0.25	
			0 (ft3)	10	0	LTEN (lb)	5000





Calibration Report

Database File 6330ddn.db
 Dataset Pathname pass3.1M
 Dataset Creation Tue Apr 19 08:50:11 2022

Dual Induction Calibration Report

Serial-Model: PROBE9-DILG
 Surface Cal Performed: Fri Apr 15 02:42:17 2022
 Downhole Cal Performed: Wed Mar 11 11:31:19 2020
 After Survey Verification Performed: Wed Mar 11 11:31:22 2020

Surface Calibration

Loop:	Readings				References			Results	
	Air	Loop			Air	Loop	mmho/m	m	b
Deep	-0.014	0.629	V	0.000	400.000	mmho/m	720.000	-15.000	
Medium	0.039	0.728	V	0.000	464.000	mmho/m	720.000	-25.000	
Internal:	Zero	Cal		Zero	Cal		m	b	
Deep	0.011	0.610	V	0.000	400.000	mmho/m	667.135	-7.256	
Medium	0.005	0.712	V	0.000	464.000	mmho/m	655.677	-3.102	

Downhole Calibration

	Readings				References			Results	
	Zero	Cal			Zero	Cal	mmho/m	m'	b'
Deep	0.000	0.000	mmho/m	14.508	388.384	mmho/m	1.000	0.000	

Medium	0.000	0.000	mmho/m	166.367	504.400	mmho/m	1.000	0.000
LL3		7.500	V		1400.000	Ohm-m		
		0.000	V		20.000	Ohm-m		
		-7.200	V		4000.000	mmho-m		

After Survey Verification								
	Readings			Targets			Results	
	Zero	Cal		Zero	Cal		m'	b'
Deep	0.000	0.000	mmho/m	0.000	0.000	mmho/m	0.000	0.000
Medium	0.000	0.000	mmho/m	0.000	0.000	mmho/m	0.000	0.000
LL3		1.000	Ohm-m		1.000	Ohm-m		
		0.000	Ohm-m		0.000	Ohm-m		
		1.000	mmho-m		1.000	mmho-m		

Litho Density Calibration Report
Serial: 003 Model: PRB

Master Calibration		Performed Mon Apr 18 10:49:34 2022					
	Background	Magnesium	Aluminum	Aluminum+Fe			
Window 1	1567.8	10473.4	3487.3	3101.8			cps
Window 2	1450.7	9386.7	3166.2	2840.8			cps
Window 3	1337.4	7279.4	2620.9	2420.3			cps
Window 4	359.5	362.8	361.7	361.9			cps
Long Space	0.0	7936.1	1715.5	1390.2			cps
Short Space	3.4	3300.5	2130.6	1771.3			cps
Rho		1.7100	2.5900	0.0000			g/cc
Pe		2.0000	2.7500	5.7900			
Rib Angle	: 44.1	Rib Slope	: 0.967	Density/Spine Ratio			: 0.552
Spine Angle	: 74.1	Spine Slope	: 3.500	Spine Intercept			: -19.4

Before Survey Verification		Performed Wed Dec 31 18:00:00 1969					
Window 1	0.0	0.0	0.0	0.0	0.0		cps
Window 2	0.0	0.0	0.0	0.0	0.0		cps
Window 3	0.0	0.0	0.0	0.0	0.0		cps
Window 4	0.0	0.0	0.0	0.0	0.0		cps
Long Space	0.0	0.0	0.0	0.0	0.0		cps
Short Space	0.0	0.0	0.0	0.0	0.0		cps
Measured Rho		0.0000	0.0000	0.0000	0.0000		g/cc
Measured Correction		0.0000	0.0000	0.0000	0.0000		g/cc
Measured Pe			0.0000	0.0000	0.0000		

After Survey Verification		Performed Wed Dec 31 18:00:00 1969					
Window 1	0.0	0.0	0.0	0.0	0.0		cps
Window 2	0.0	0.0	0.0	0.0	0.0		cps
Window 3	0.0	0.0	0.0	0.0	0.0		cps
Window 4	0.0	0.0	0.0	0.0	0.0		cps
Long Space	0.0	0.0	0.0	0.0	0.0		cps
Short Space	0.0	0.0	0.0	0.0	0.0		cps
Measured Rho		0.0000	0.0000	0.0000	0.0000		g/cc
Measured Correction		0.0000	0.0000	0.0000	0.0000		g/cc
Measured Pe			0.0000	0.0000	0.0000		

Compensated Neutron Calibration Report

Serial Number:
Tool Model:

070808PMC
NABORS

PRE-SURVEY VERIFICATION

Detector	Readings	Measured	Target
Short Space	cps		
Long Space	cps	pu	pu

POST-SURVEY VERIFICATION

Detector	Readings	Measured	Target
Short Space	cps		
Long Space	cps	pu	pu

Gamma Ray Calibration Report

Serial Number:	070558	
Tool Model:	OPEN_GR	
Performed:	Tue Mar 22 20:25:25 2022	
Calibrator Value:	1.0	GAPI
Background Reading:	0.0	cps
Calibrator Reading:	1.0	cps
Sensitivity:	0.3000	GAPI/cps