



MIDWEST WIRELINE

BOREHOLE COMPENSATED SONIC LOG

Company White & Ellis Drilling Inc
Well Dunkle 7
Field
County Butler **State Kansas**

Company White & Ellis Drilling Inc
 Well Dunkle 7
 Field
 County Butler
 State Kansas

Location: 330 FWL & 1420 FSL SEC 5 TWP 25S RGE 5E	API #: 15-015-24232-00-00 Other Services: CNL/CDL MEL/DIL
Permanent Datum Log Measured From Drilling Measured From	Ground Level Kelly Bushing Kelly Bushing
	Elevation 1396
	Elevation K.B. 1405 D.F. G.L. 1396

Date	7/12/2024			
Run Number	Two			
Type Log	BHCS			
Depth Driller	2836			
Depth Logger	2831			
Bottom Logged Interval	2820			
Top Logged Interval	200			
Type Fluid In Hole	Chemical			
Salinity, PPM CL	2400			
Density	9.55			
Level	Full			
Max. Rec. Temp. F	104			
Operating Rig Time	4 Hours			
Equipment -- Location	110 HAYS			
Recorded By	J. Henrickson			
Witnessed By	Bill Stout			

Borehole Record			Casing Record				
Run No.	Bit	From	To	Size	Wgt.	From	To
One	12.25	0	207	8.625	23	0	207
Two	7.875	207	TD				

<<< Fold Here >>>

All interpretations are opinions based on inferences from electrical or other measurements and Midwest Wireline LLC cannot and does not guarantee the accuracy or correctness of any interpretation, and Midwest Wireline LLC will not be liable or responsible for any loss, costs, damages, or expenses incurred or sustained by anyone resulting from any interpretation made by any of our officers, agents or employees.

Comments

N/A DENOTES NOT AVAILABLE OR NON-APPLICABLE.

Potwin Kansas
 Southeast to 50th, 1 1/2 E, N Into

Log Measured From: Kelly Bushing 9 Ft. Above Permanent Datum

THANK YOU FOR USING MIDWEST WIRELINE LLC
 785-625-3858

Your Midwest Wireline Crew Engineer: J. Henrickson Operator: Operator: Operator:	This Log Record Was Witnessed By Primary Witness: Bill Stout Secondary Witness: Secondary Witness: Secondary Witness:
---	--

Log Variables

DatabaseC:\ProgramData\Warrior\Data\white_ellis_dunkle_7.db
Dataset field/well/stackml/pass3.1/_vars_

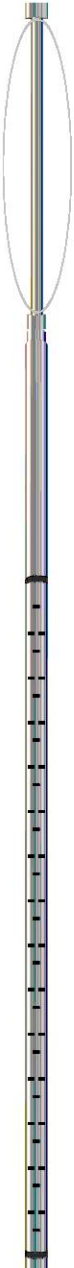
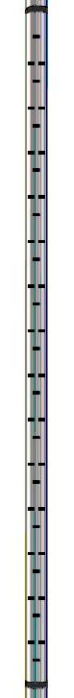
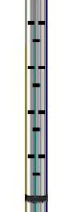
Top - Bottom

A	BOREID in	BOTTEMP degF	CASEOD in	CASETHCK in	FLUIDDEN g/cc	M	MATRXDEN g/cc
1	7.875	104	5.5	0	1	2	2.71
NPORSEL	PERFS	SNDERR mmho/m	SNDERRM mmho/m	SPSHIFT mV	SRFTEMP degF	SZCOR	TDEPTH ft
Limestone	No	0	0	85	95	Off	2831

Variable Description

A : Cement Factor (a)
BOREID : Borehole I.D.
BOTTEMP : Bottom Hole Temperature
CASEOD : Casing O.D.
CASETHCK : Casing Thickness
FLUIDDEN : Fluid Density
M : Cement Exp (m)
MATRXDEN : Matrix Density

NPORSEL : Neutron Porosity Curve Select
PERFS : Perforation Flag
SNDERR : Deep Sonde Error Correction
SNDERRM : Medium Sonde Error Correction
SPSHIFT : S.P. Baseline Offset
SRFTEMP : Surface Temperature
SZCOR : CN Size Cor. ?
TDEPTH : Total Depth

Sensor	Offset (ft)	Schematic	Description	Length (ft)	O.D. (in)	Weight (lb)
			CENT-PENGO	4.25	3.00	70.00
WVF4 WVF1	12.50 12.50		SLT-PENGO (602)	16.00	3.50	300.00
WVF3 WVF2	10.50 10.50					



CENT-PENGO

4.25

3.00

70.00

Dataset: white_ellis_dunkle_7.db: field/well/sonic/pass2
 Total length: 24.50 ft
 Total weight: 440.00 lb
 O.D.: 3.50 in



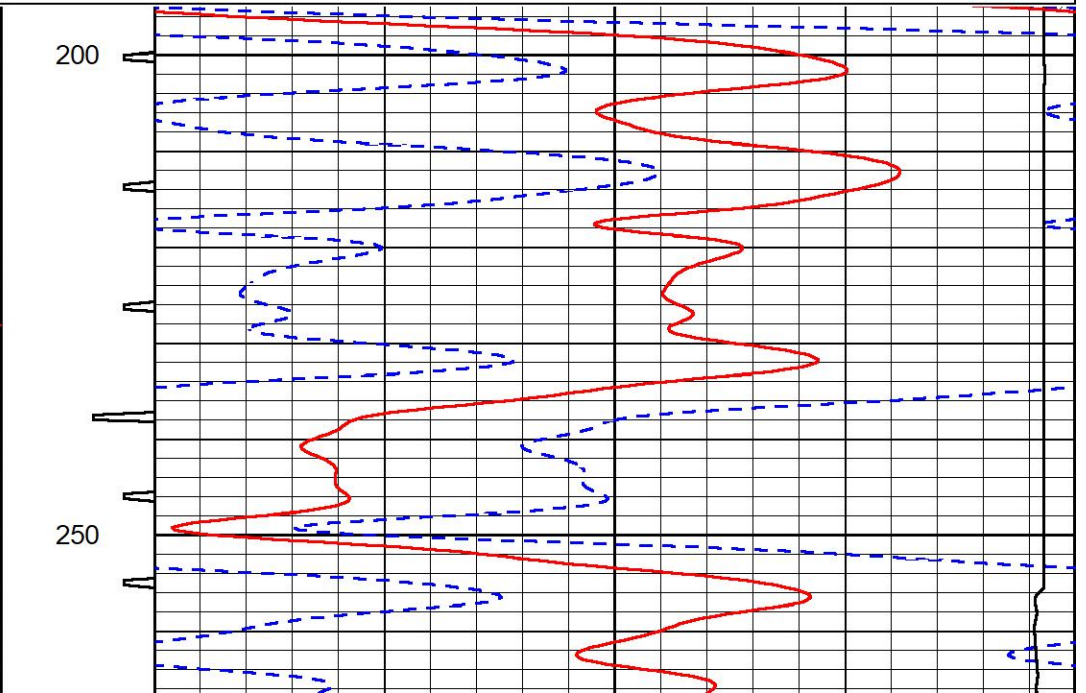
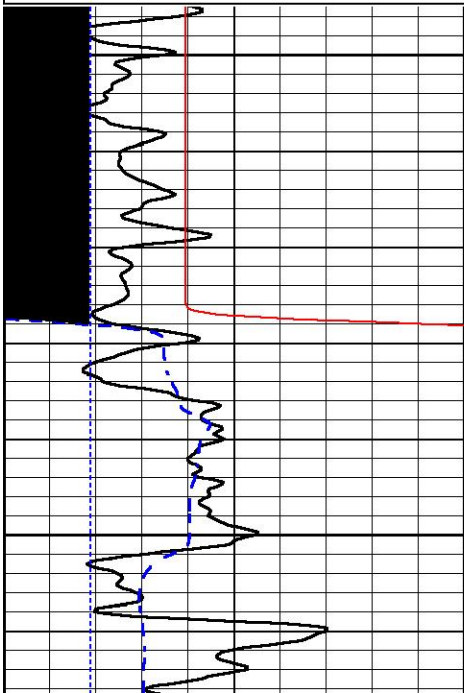
MIDWEST WIRELINE

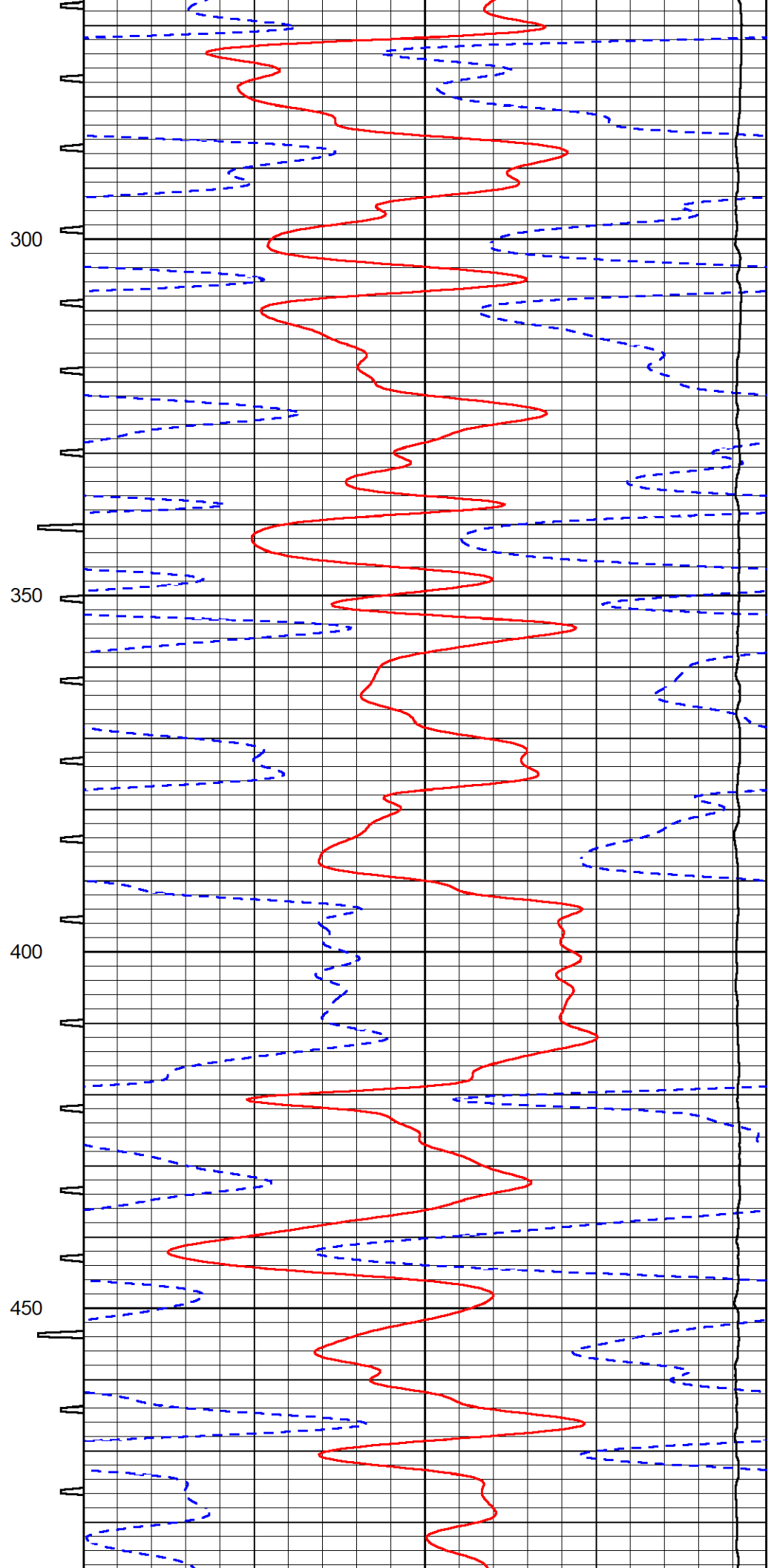
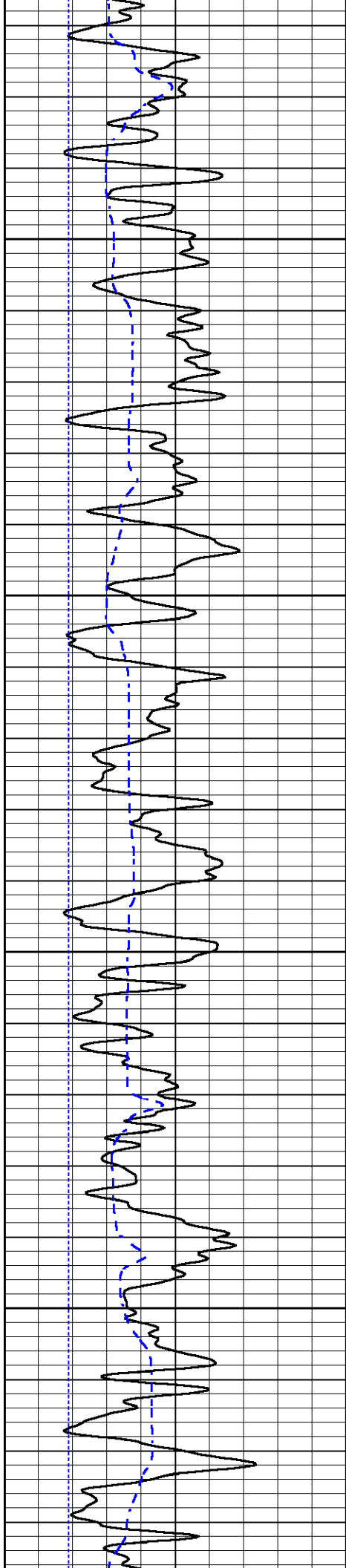
DETAIL SECTION

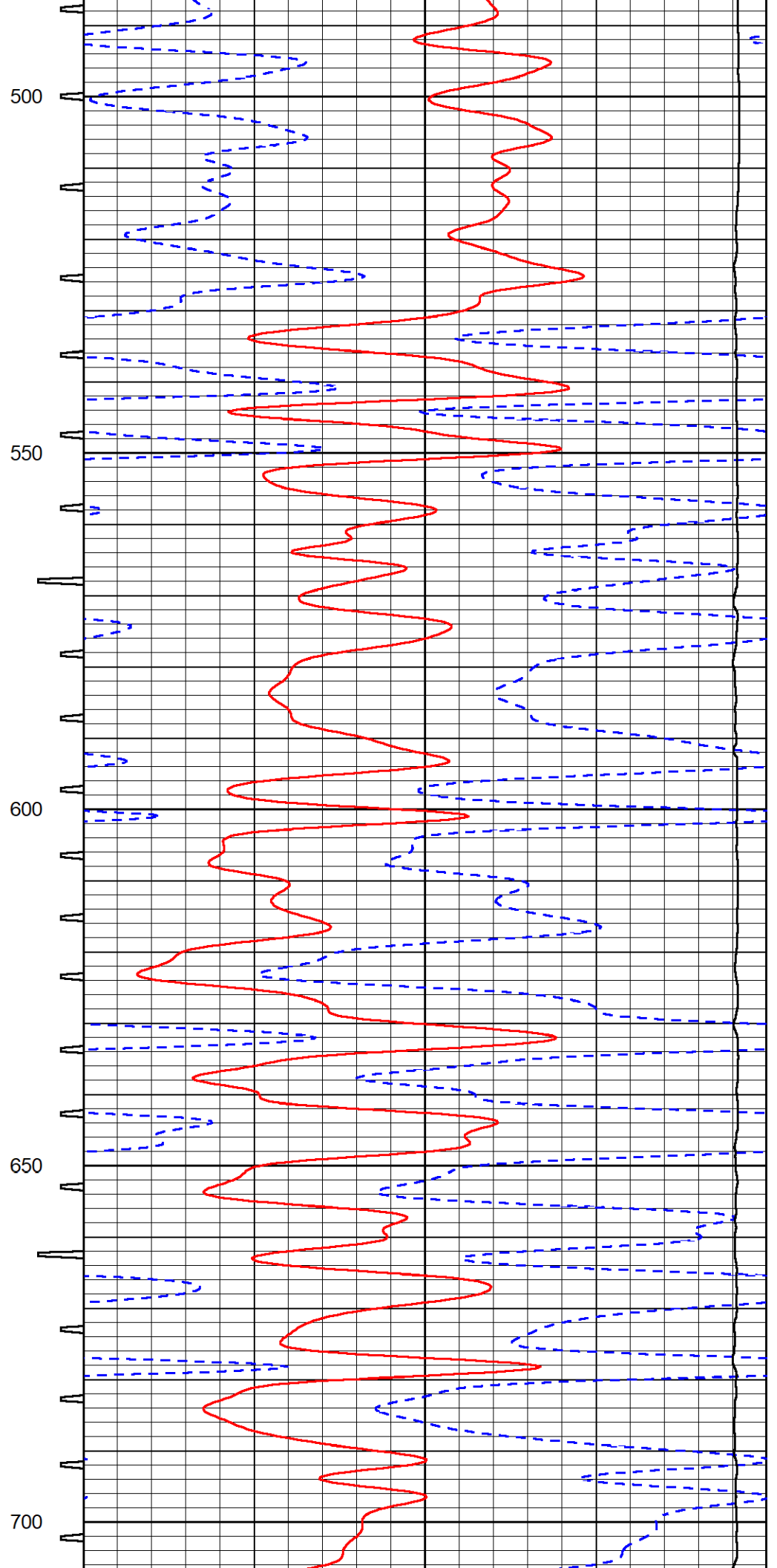
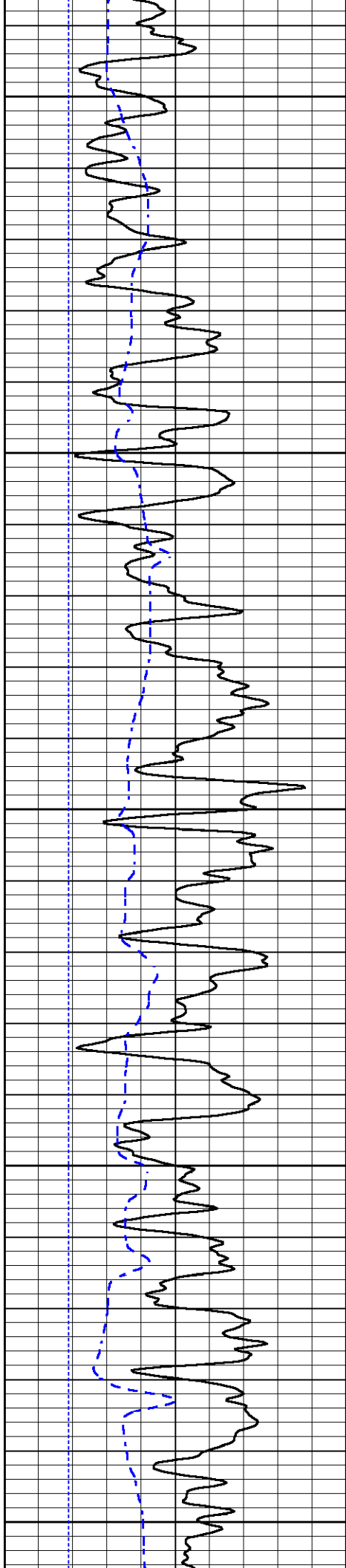
MAIN PASS

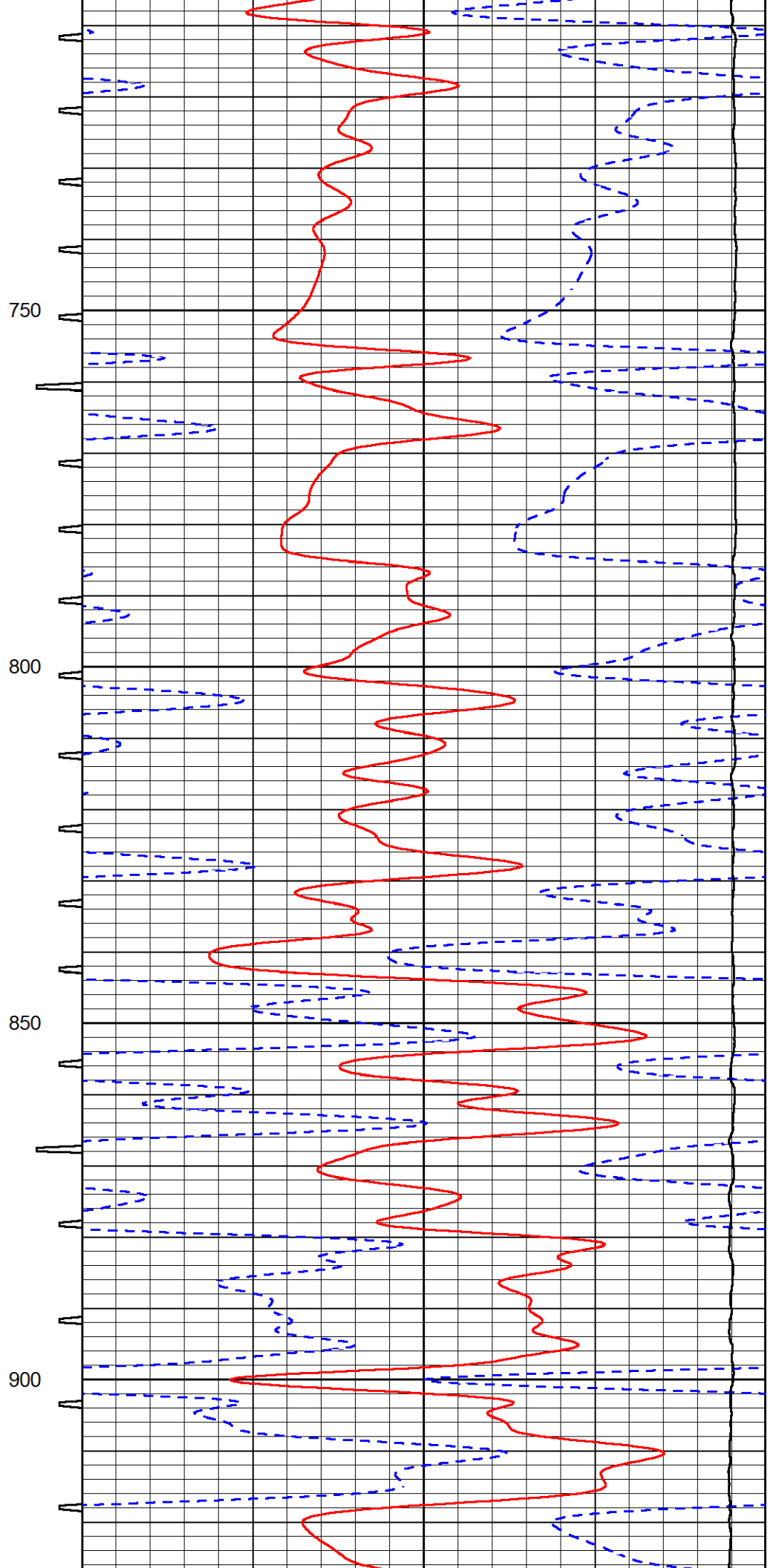
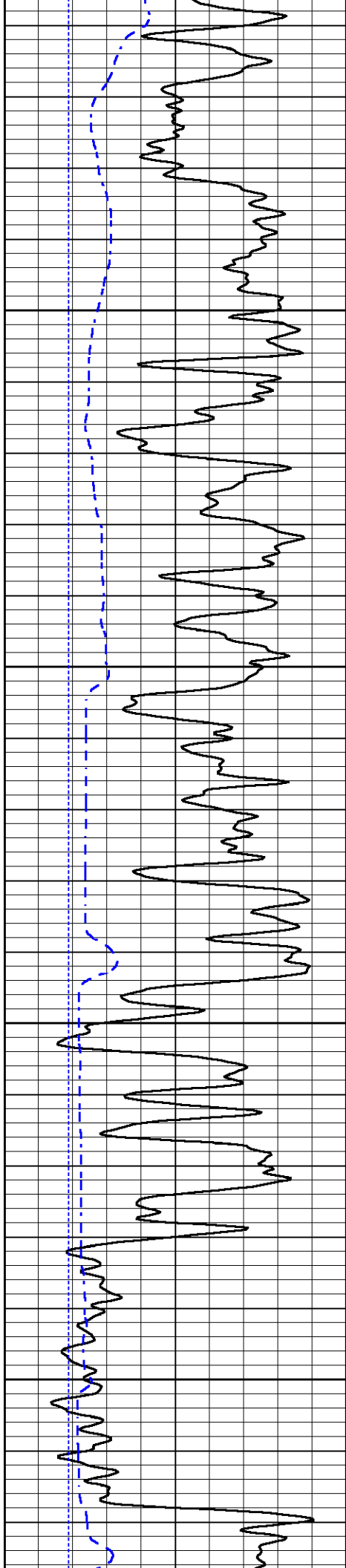
Database File white_ellis_dunkle_7.db
 Dataset Pathname stackml/pass3.1
 Presentation Format _sonic
 Dataset Creation Fri Jul 12 18:55:24 2024
 Charted by Depth in Feet scaled 1:240

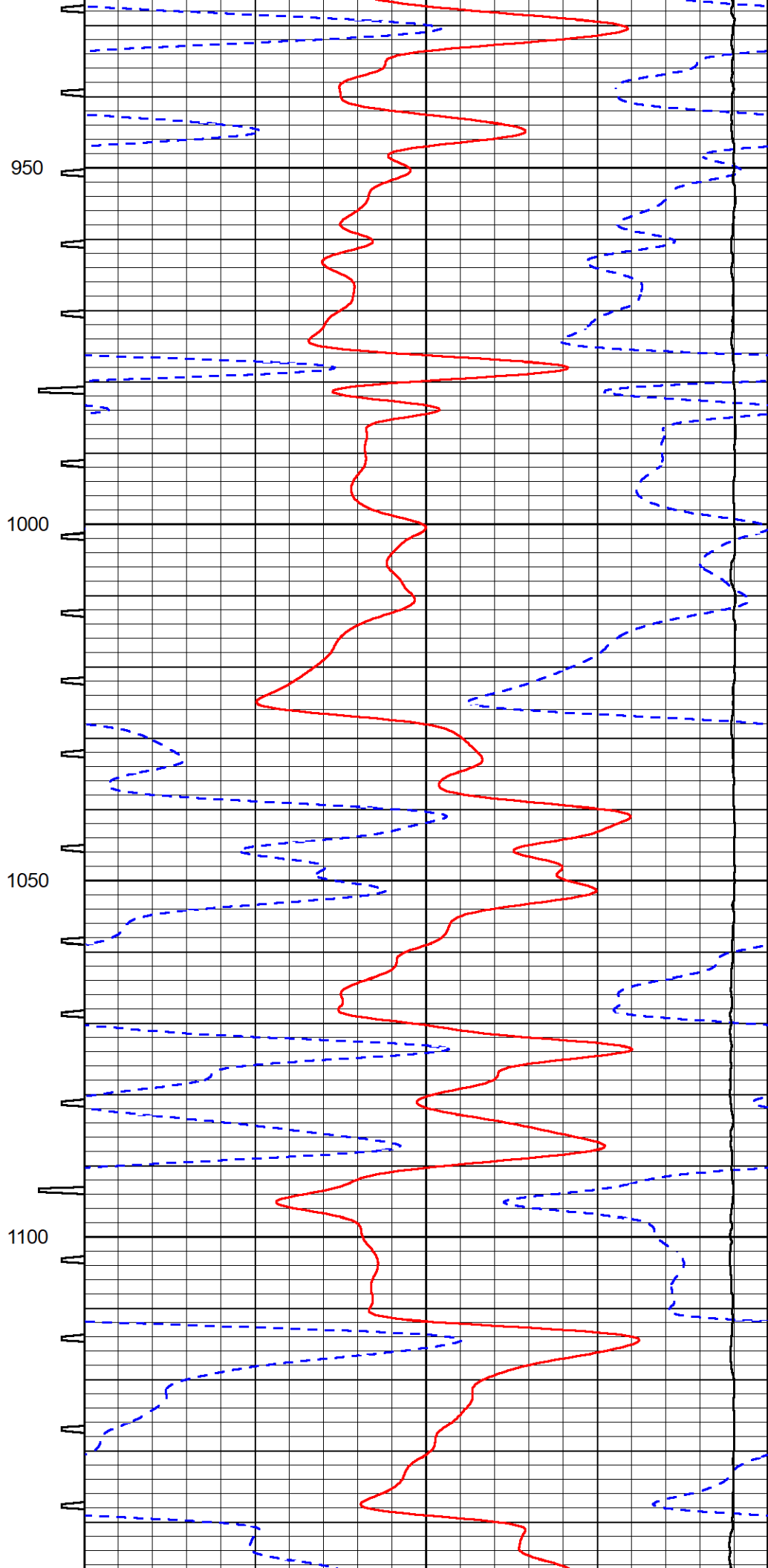
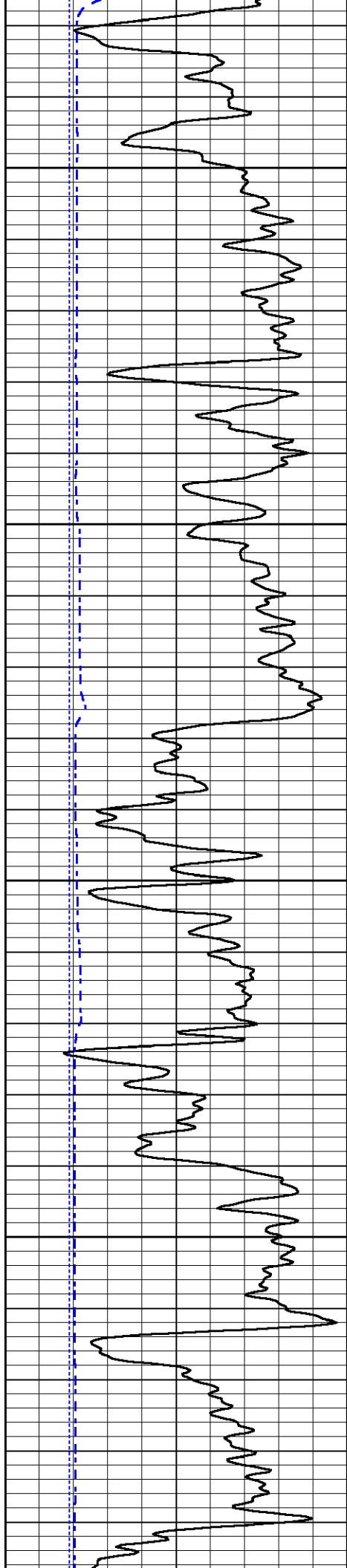
0	Gamma Ray (GAPI)	150	Sonic Int	140	Delta Time (usec/ft) (usec/ft)	40
150	GR (GAPI)	300	5 (msec) 0	30	Sonic Porosity (pu) (pu)	-10
6	LCAL (in)	16		15000	Line Tension (lb)	0
2.875	lcal (in)	7.875				

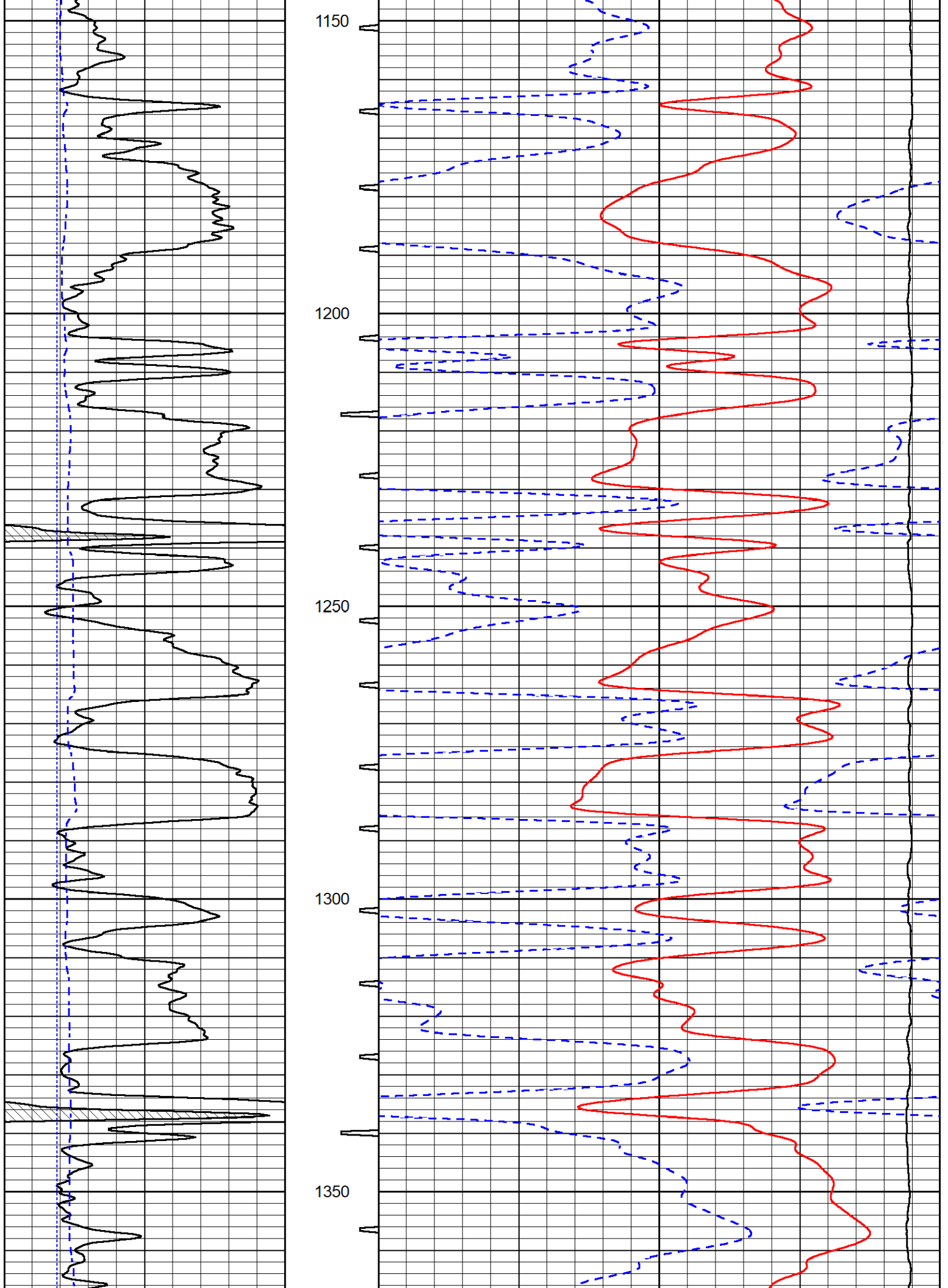


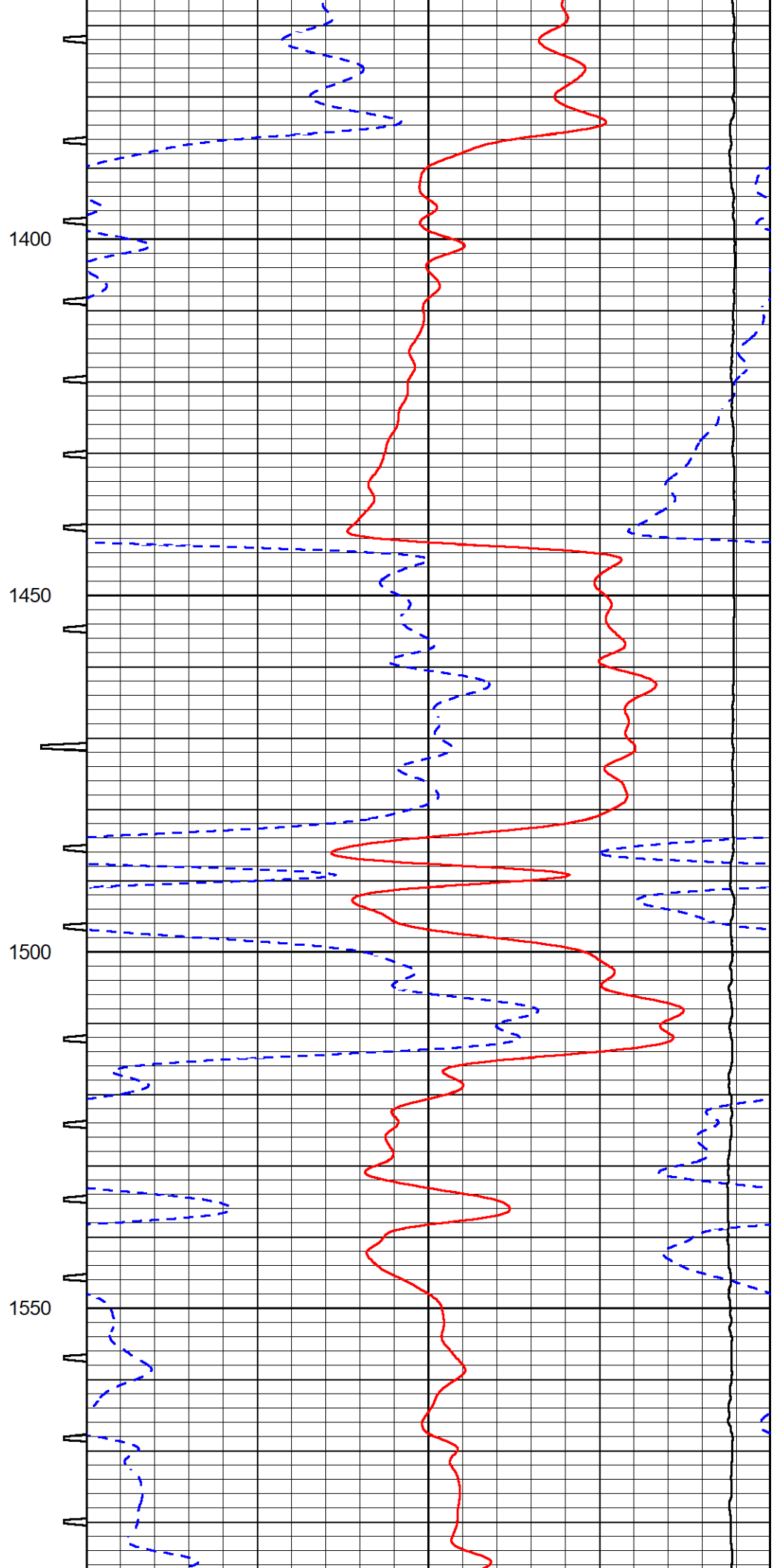
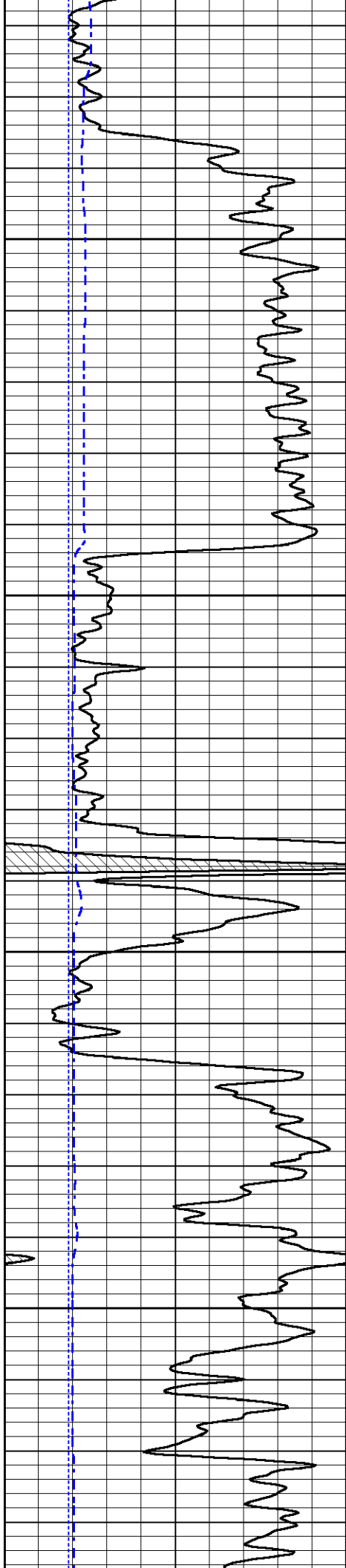


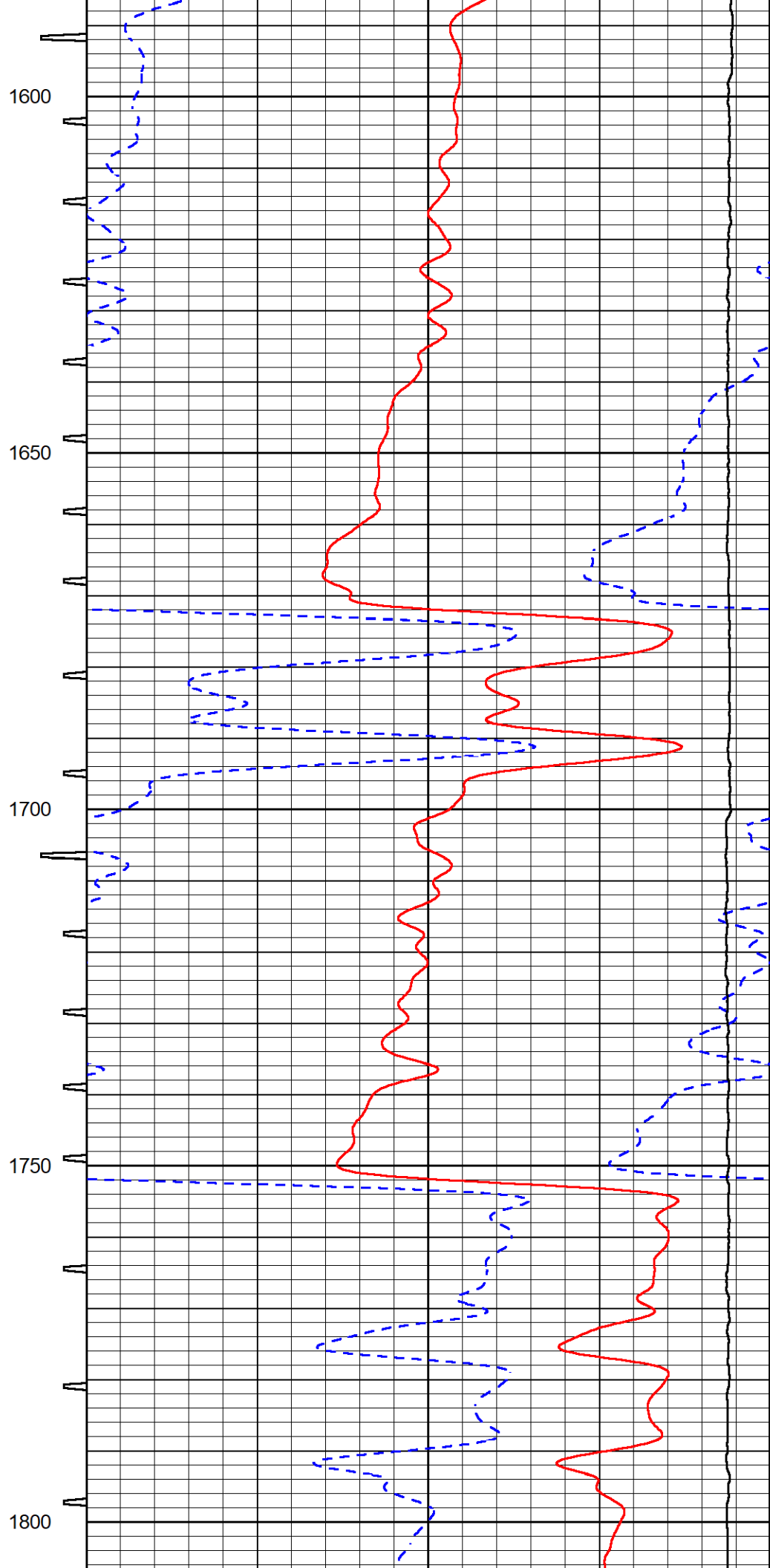
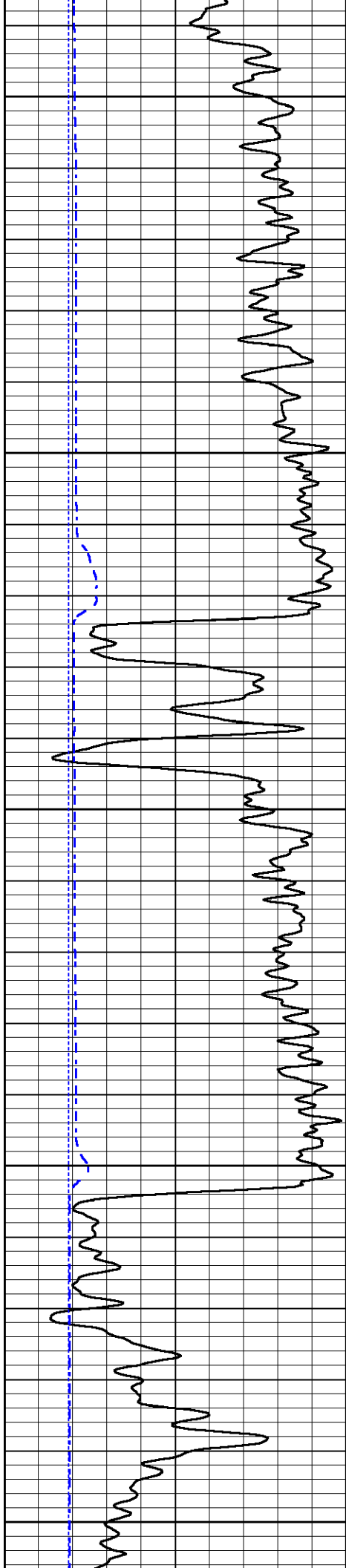


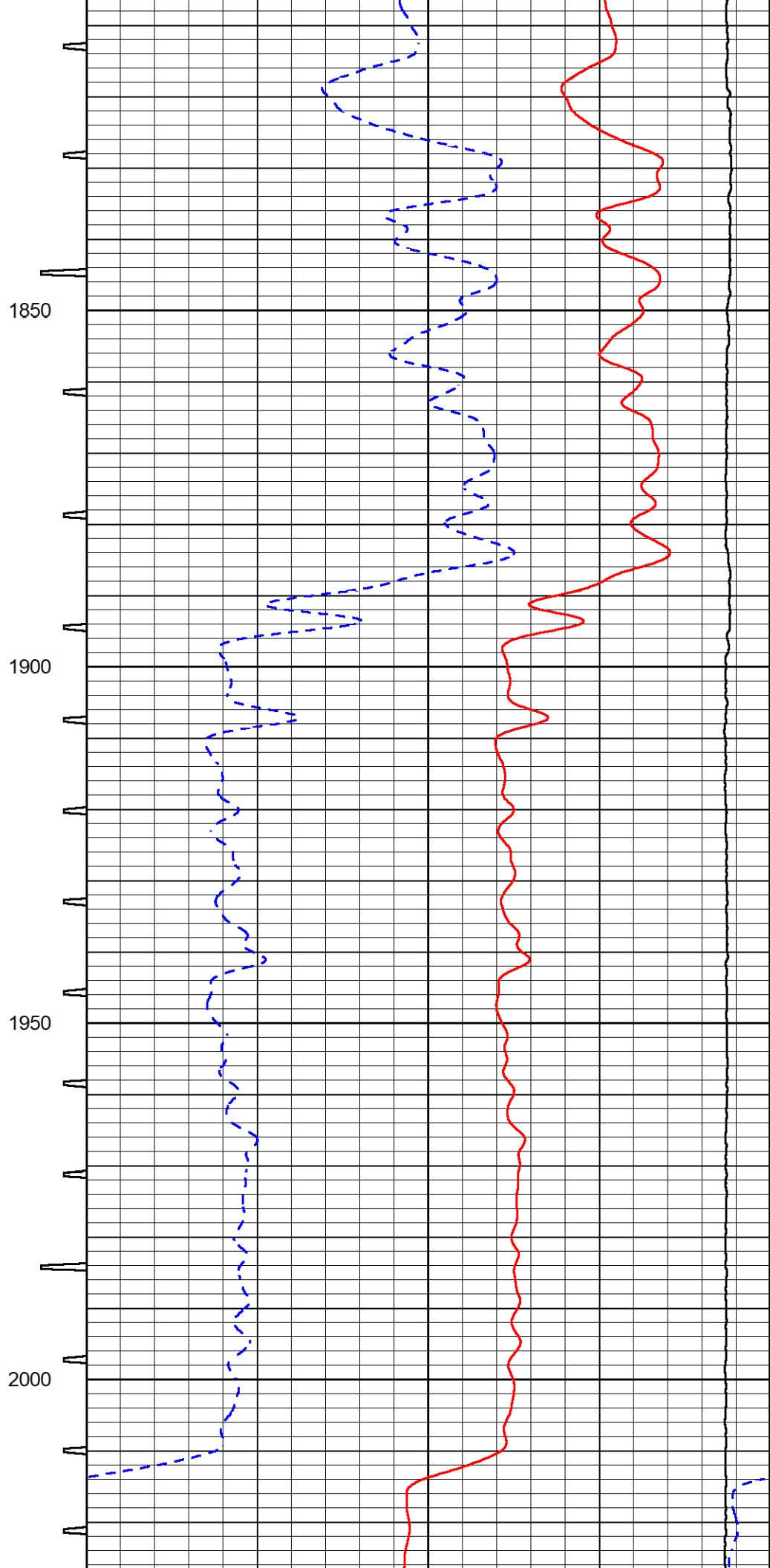
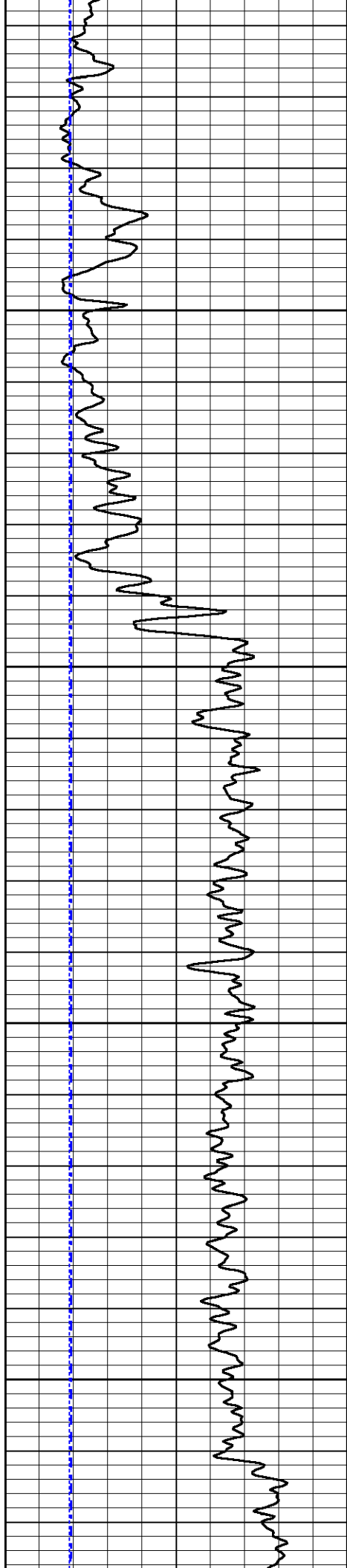


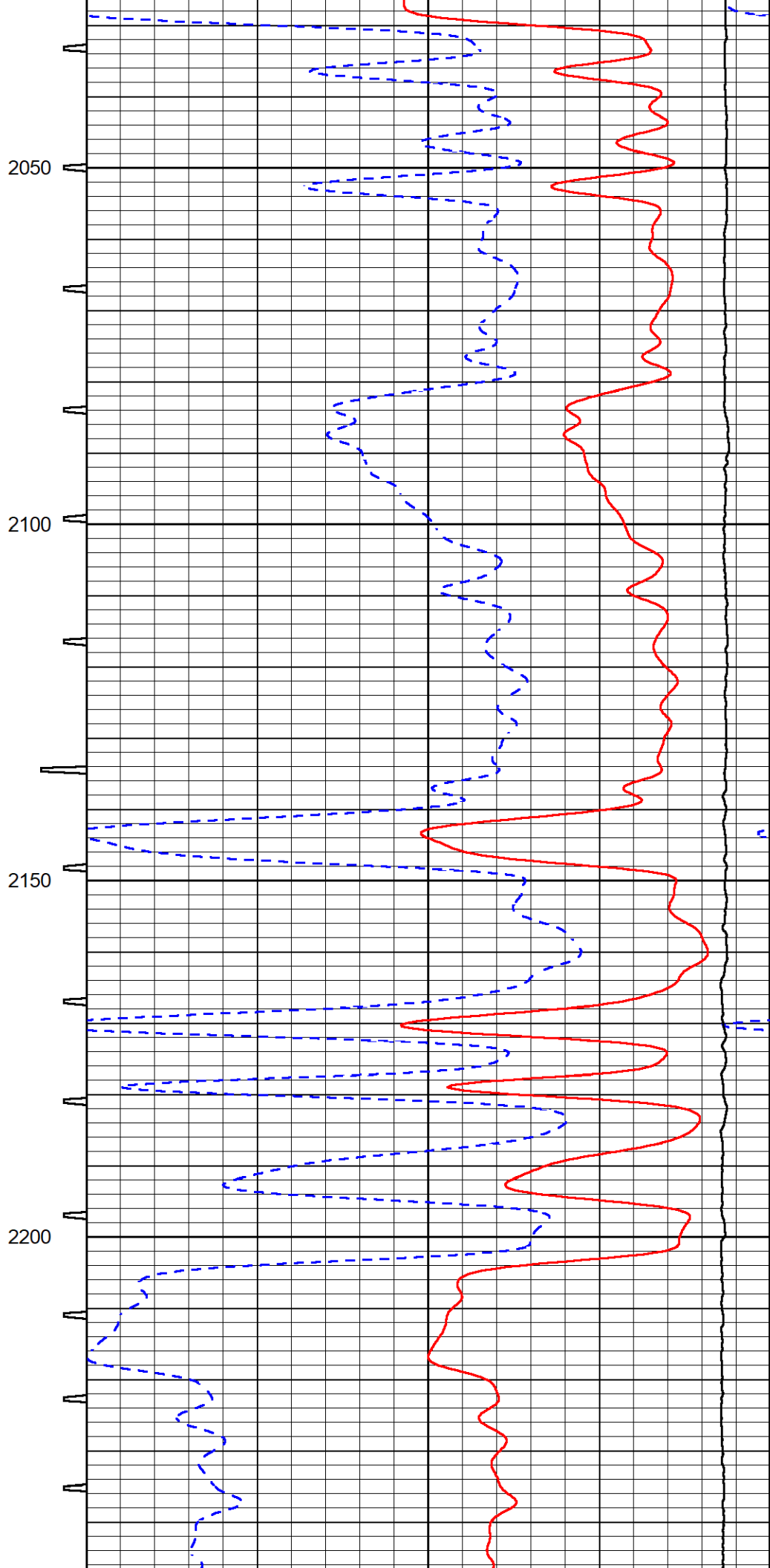
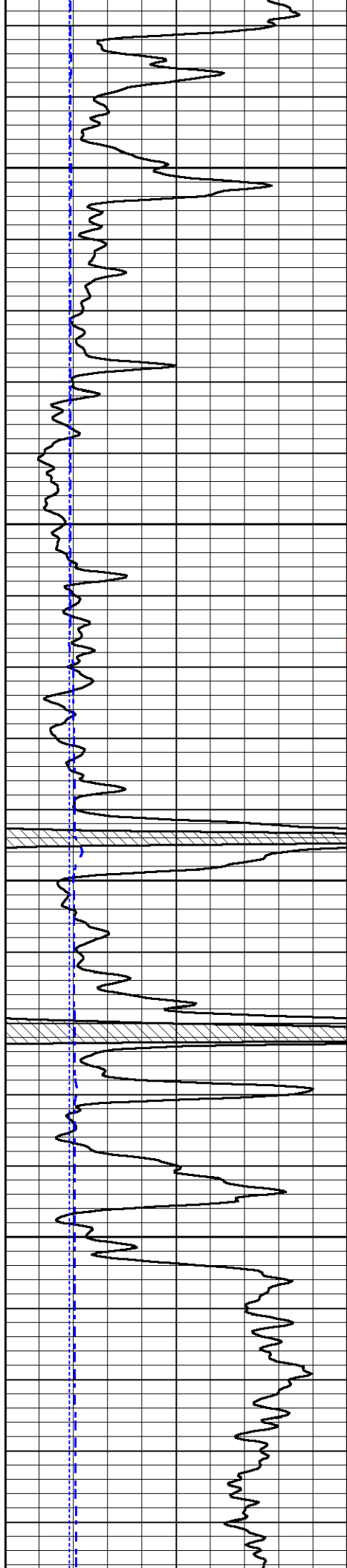


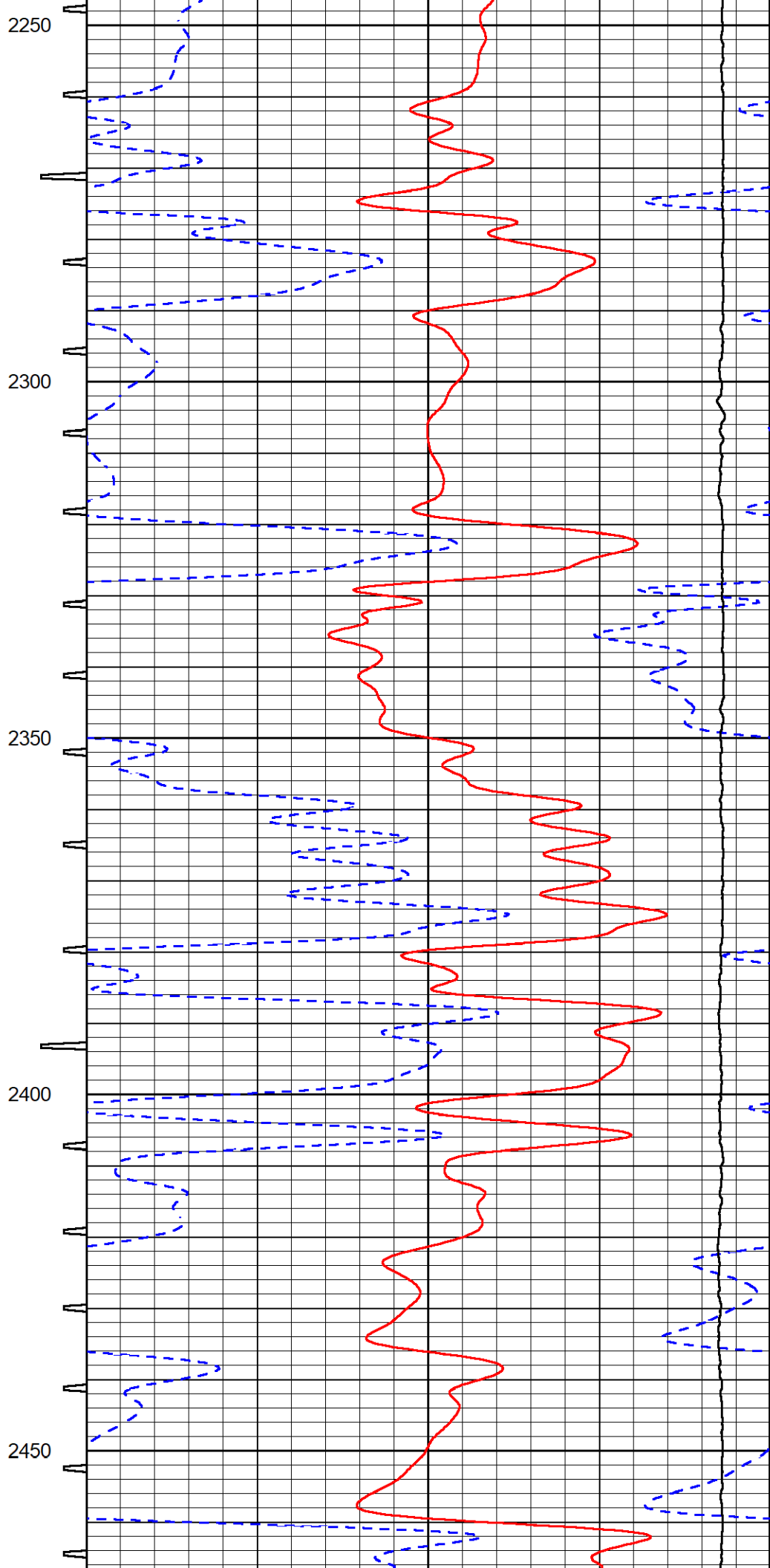
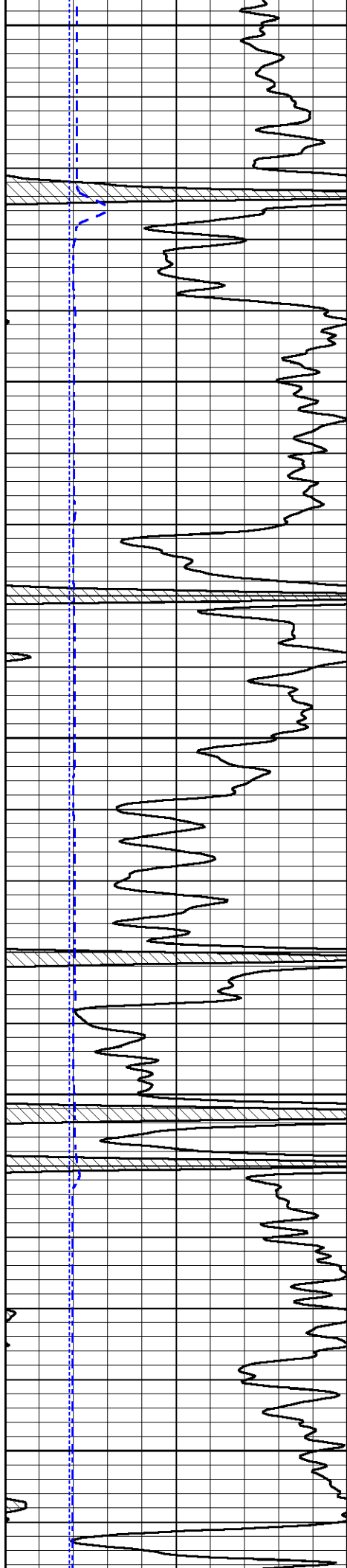


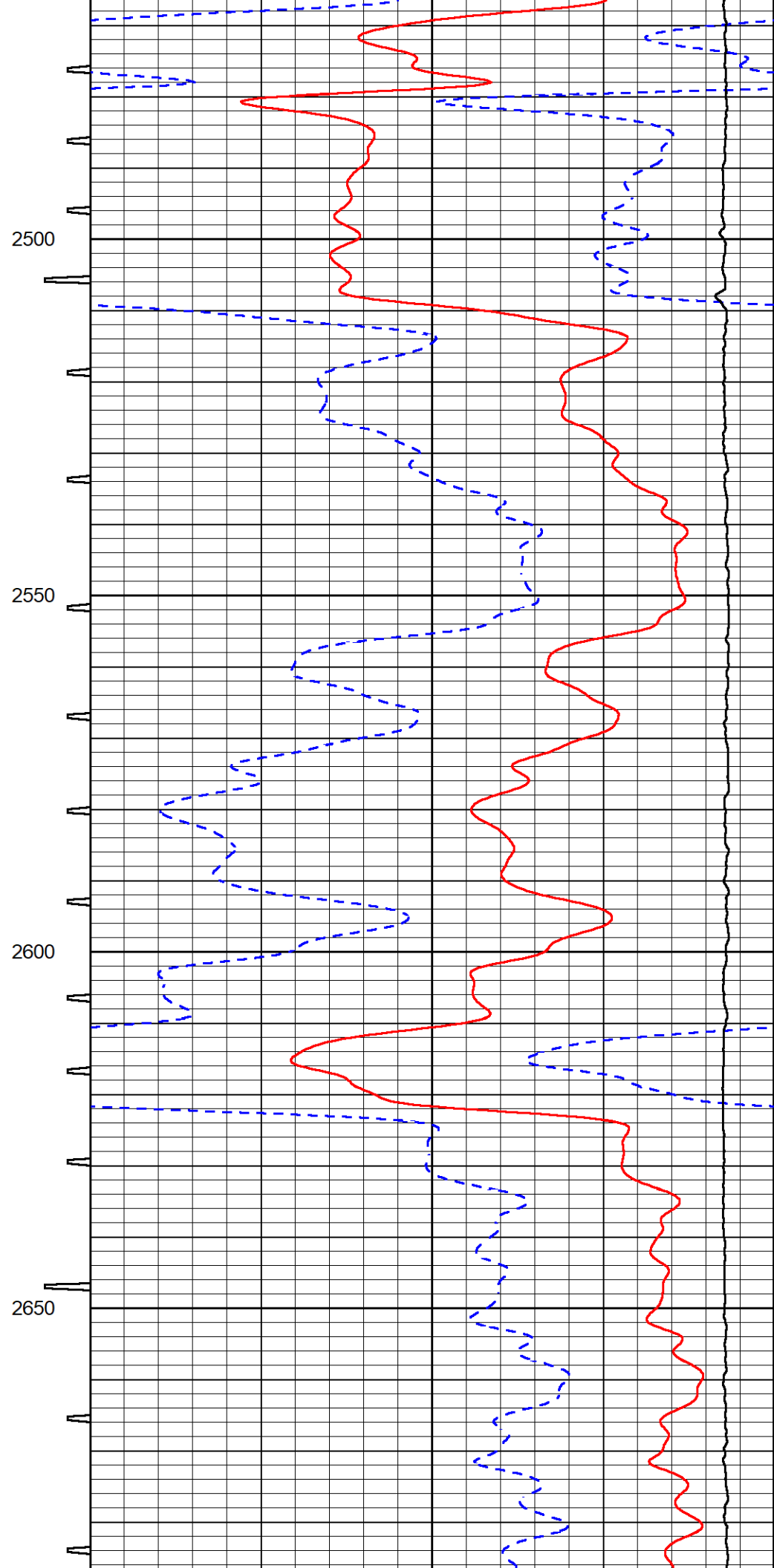
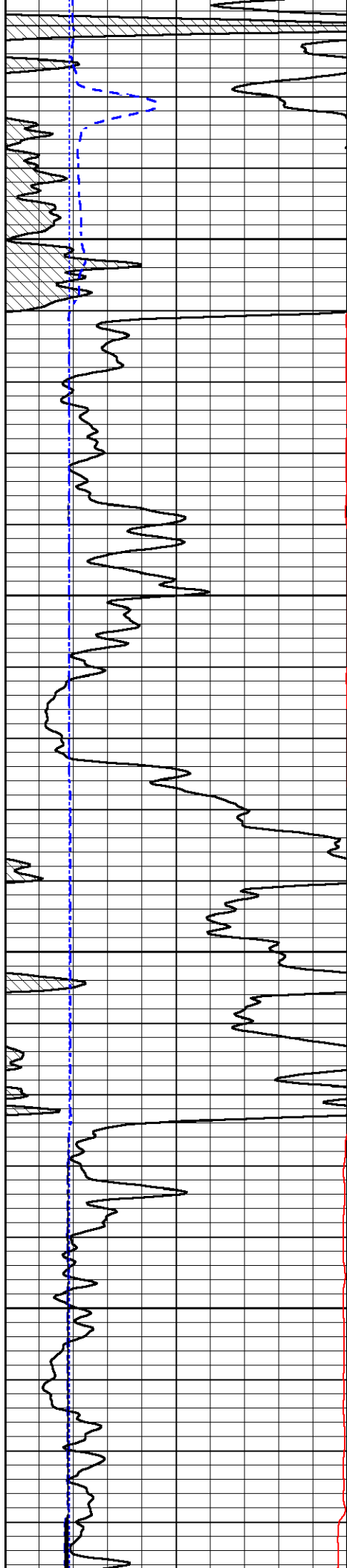


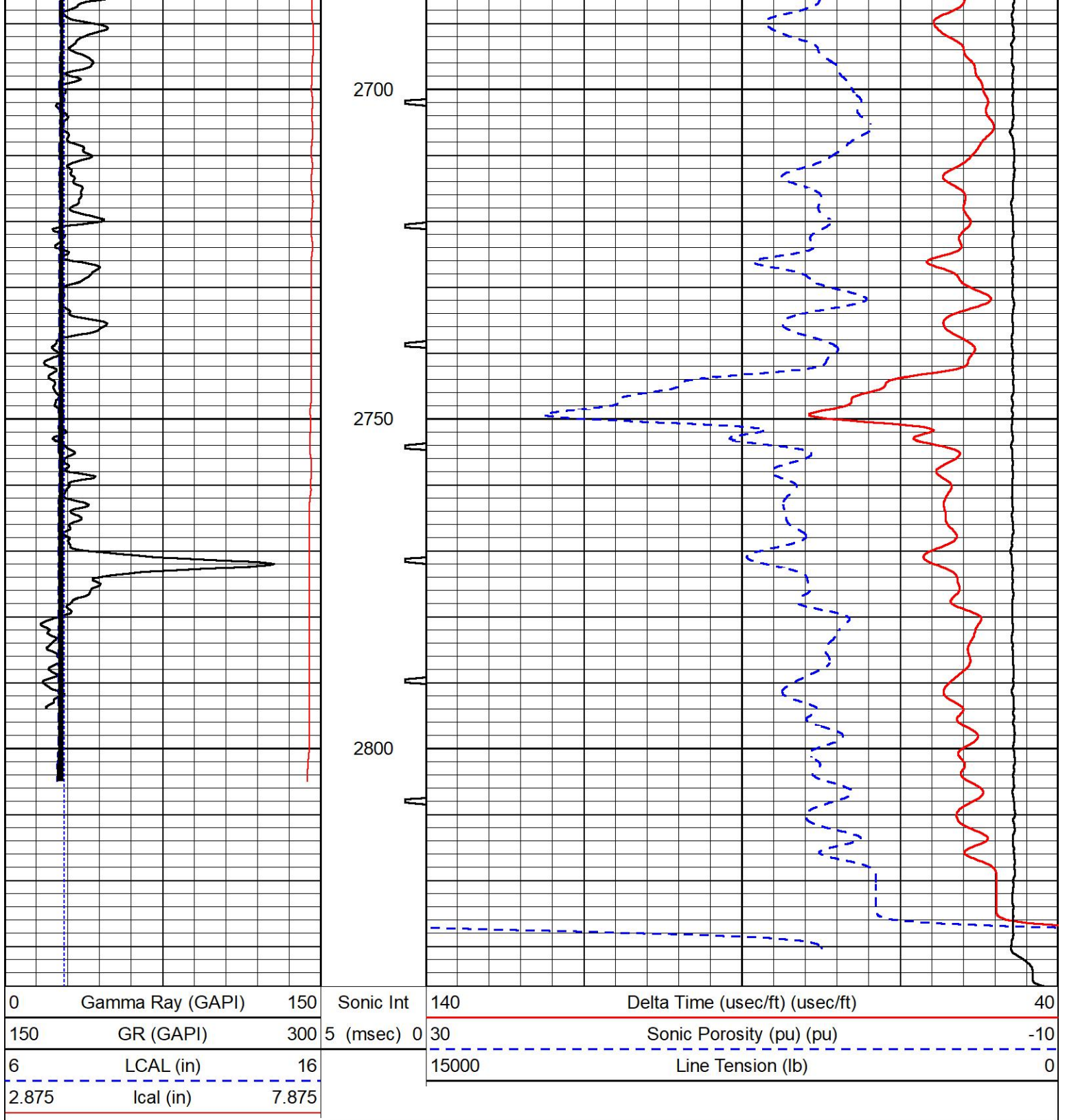












MIDWEST WIRELINE

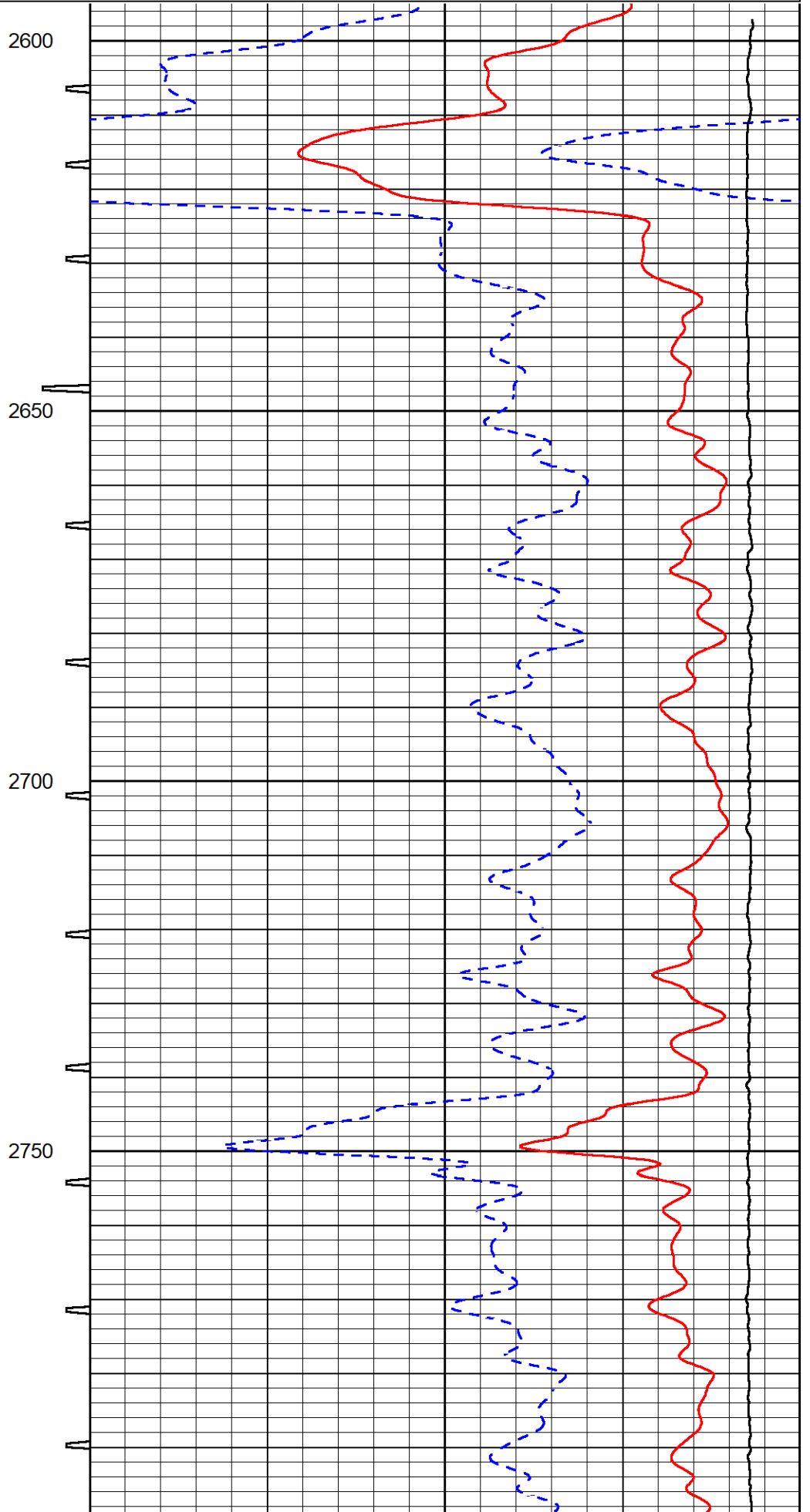
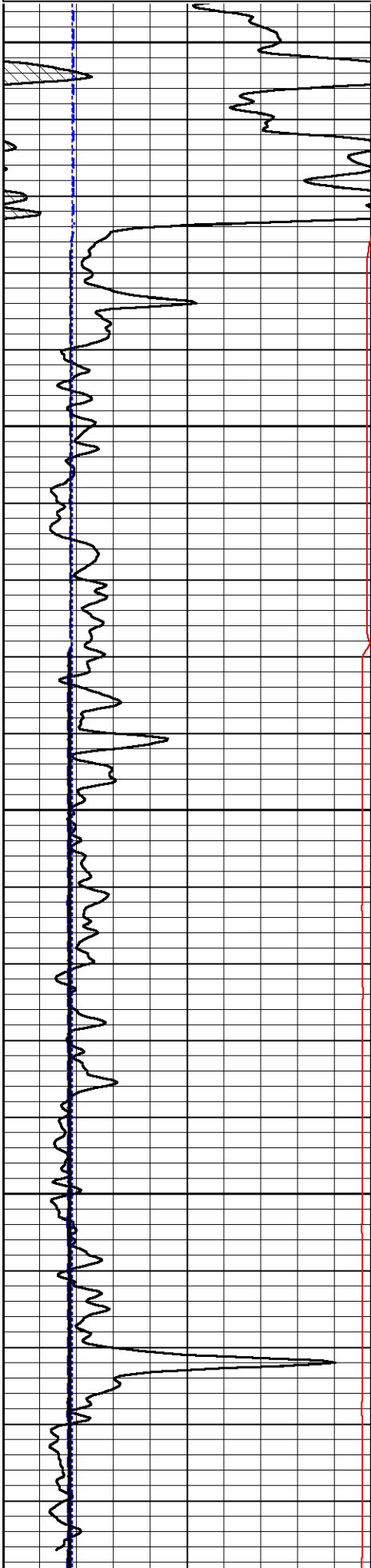
REPEAT SECTION

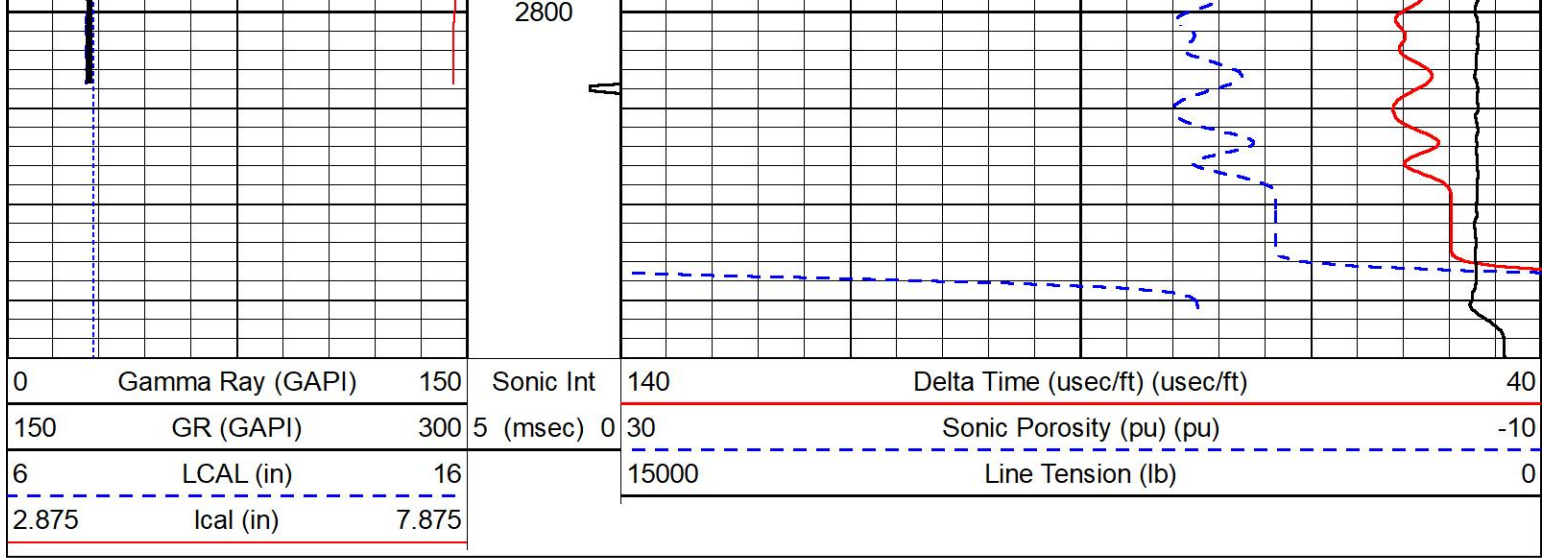
REPEAT PASS

Database File white_ellis_dunkle_7.db
 Dataset Pathname stackml/pass2.1
 Presentation Format _sonic
 Dataset Creation Fri Jul 12 18:02:51 2024
 Charted by Depth in Feet scaled 1:240

0	Gamma Ray (GAPI)	150	Sonic Int	140	Delta Time (usec/ft) (usec/ft)	40
---	------------------	-----	-----------	-----	--------------------------------	----

150	GR (GAPI)	300	5 (msec)	0	30	Sonic Porosity (pu) (pu)	-10
6	LCAL (in)	16			15000	Line Tension (lb)	0
2.875	lcal (in)	7.875					





Company White & Ellis Drilling Inc
 Well Dunkle 7
 Field
 County Butler
 State Kansas