

Log Variables

DatabaseC:\ProgramData\Warrior\Data\white_ellis_dunkle_7.db
Dataset field/well/stackml/pass3.1/_vars_

Top - Bottom

A	BOREID in	BOTTEMP degF	CASEOD in	CASETHCK in	FLUIDDEN g/cc	M	MATRXDEN g/cc
1	7.875	104	5.5	0	1	2	2.71
NPORSEL	PERFS	SNDERR mmho/m	SNDERRM mmho/m	SPSHIFT mV	SRFTEMP degF	SZCOR	TDEPTH ft
Limestone	No	0	0	85	95	Off	2831

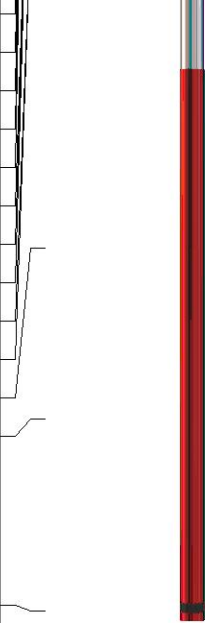
Variable Description

A : Cement Factor (a)
BOREID : Borehole I.D.
BOTTEMP : Bottom Hole Temperature
CASEOD : Casing O.D.
CASETHCK : Casing Thickness
FLUIDDEN : Fluid Density
M : Cement Exp (m)
MATRXDEN : Matrix Density

NPORSEL : Neutron Porosity Curve Select
PERFS : Perforation Flag
SNDERR : Deep Sonde Error Correction
SNDERRM : Medium Sonde Error Correction
SPSHIFT : S.P. Baseline Offset
SRFTEMP : Surface Temperature
SZCOR : CN Size Cor. ?
TDEPTH : Total Depth

Sensor	Offset (ft)	Schematic	Description	Length (ft)	O.D. (in)	Weight (lb)	
GR	40.23		GR-M&W (105)	3.00	3.50	50.00	
CNLSC	37.13		CNT-M&W (210)	5.00	3.50	100.00	
CNSSC	36.38			MWLith-STEP LITHO Short (703-03)	8.40	5.00	250.00
LCAL	28.21		ML-PSI STKBL ML (402)		7.58	4.00	65.00
LLW8N	28.21						
LLW7N	28.21						
LLW6N	28.21						
LLW5N	28.21						
LLW4N	28.21						
LLW3N	28.21						
LLW2N	28.21						
LLW1N	28.21						
LSLOCK	27.96						
LLLOCK	27.96						
PELTMPR	27.96						
LSHVNG	27.96						
LLHVNG	27.96						
LSW8N	27.71						
LSW7N	27.71						
LSW6N	27.71						

LSW5N	27.71
LSW4N	27.71
LSW3N	27.71
LSW2N	27.71
LSW1N	27.71
MCAL	19.58
MI	19.58
MN	19.58
RLL3F	15.50
RLL3	15.50
CILD	8.33
CILM	4.50
SP	0.20



DIL-M&W (506)

18.25 3.50 220.00

Dataset: white_ellis_dunkle_7.db: field/well/stackml/pass3.1
 Total length: 42.23 ft
 Total weight: 685.00 lb
 O.D.: 5.00 in



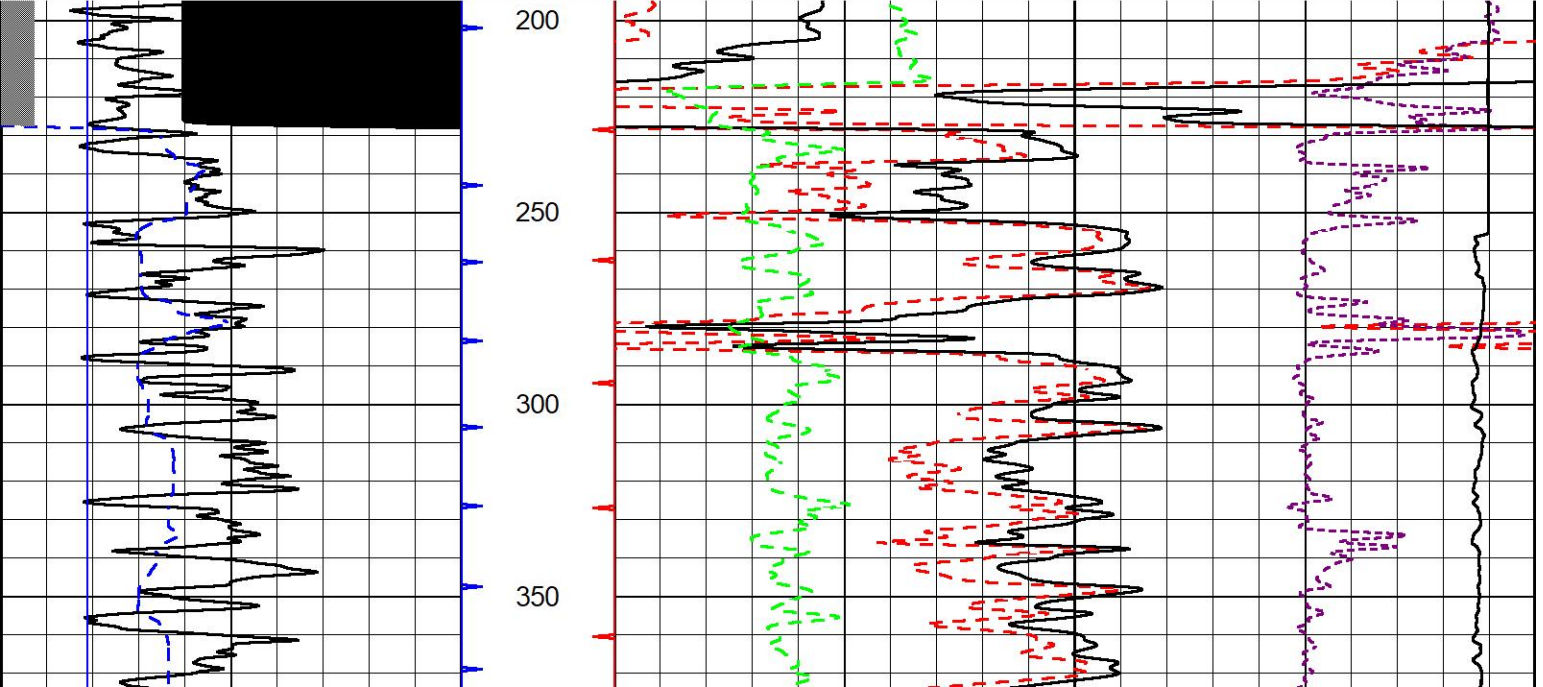
2" SCALE BULK DENSITY

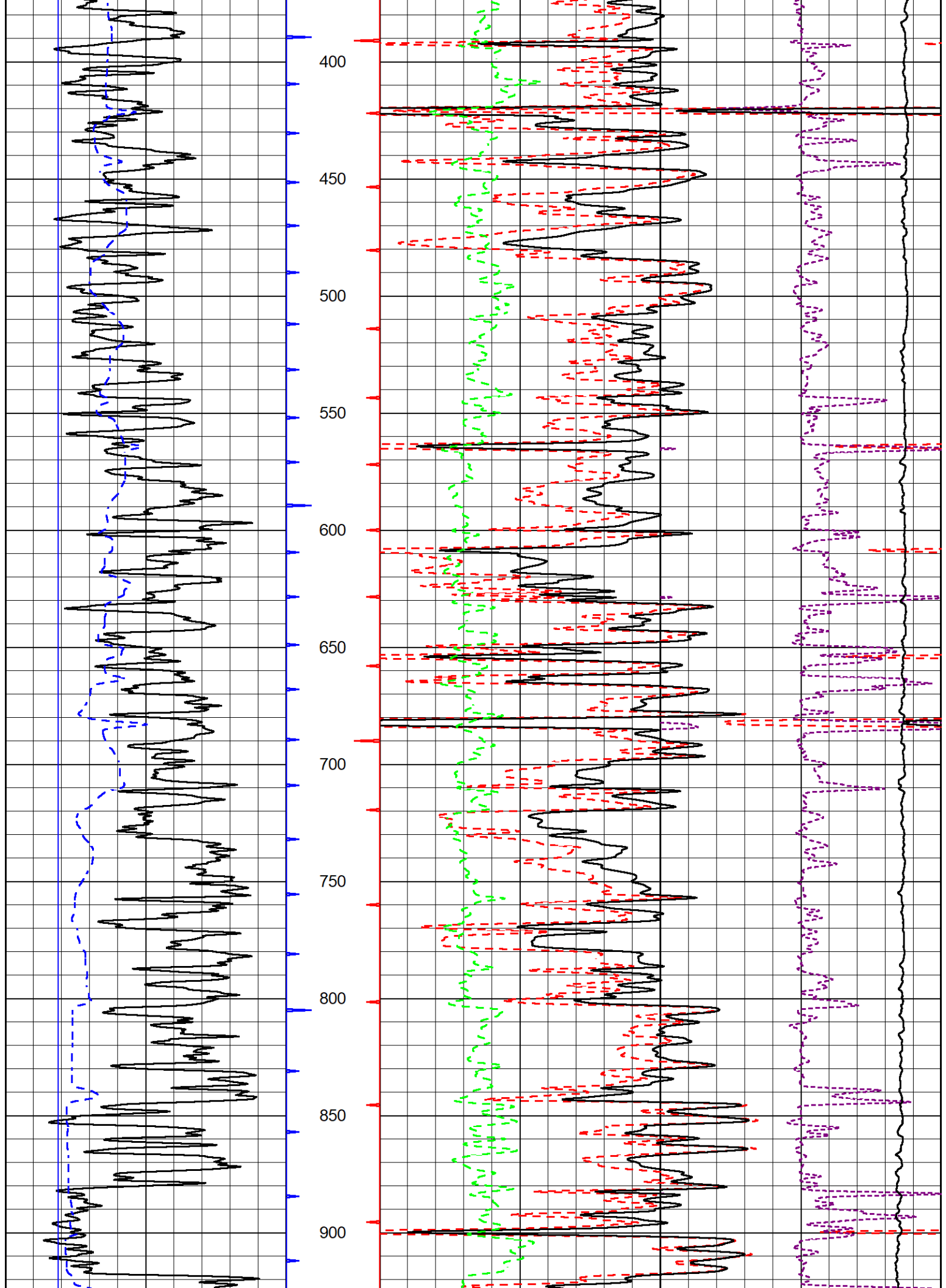
MAIN PASS

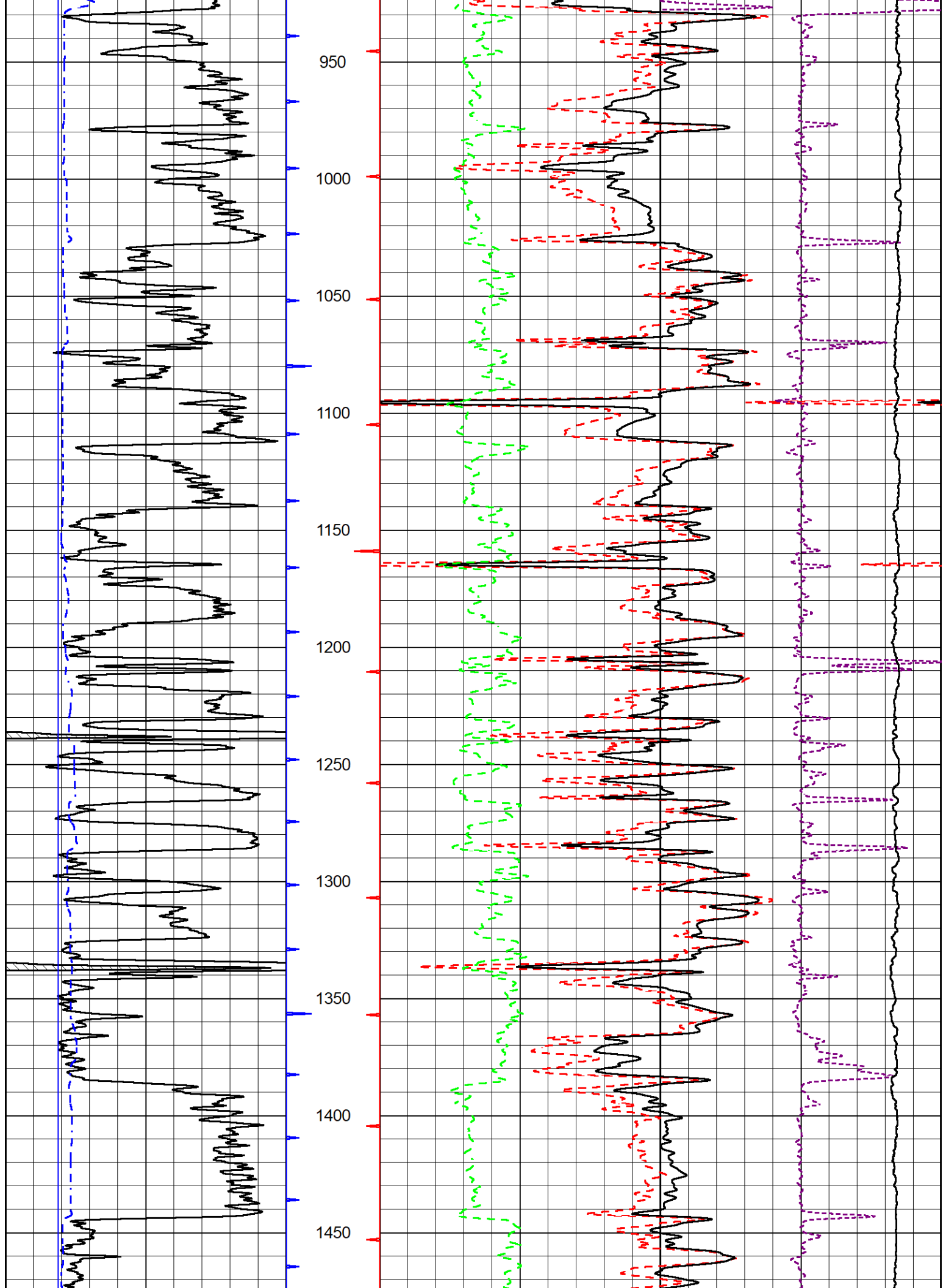
Database File white_ellis_dunkle_7.db
 Dataset Pathname stackml/pass3.3
 Presentation Format _cdlpe
 Dataset Creation Fri Jul 12 18:53:59 2024
 Charted by Depth in Feet scaled 1:600

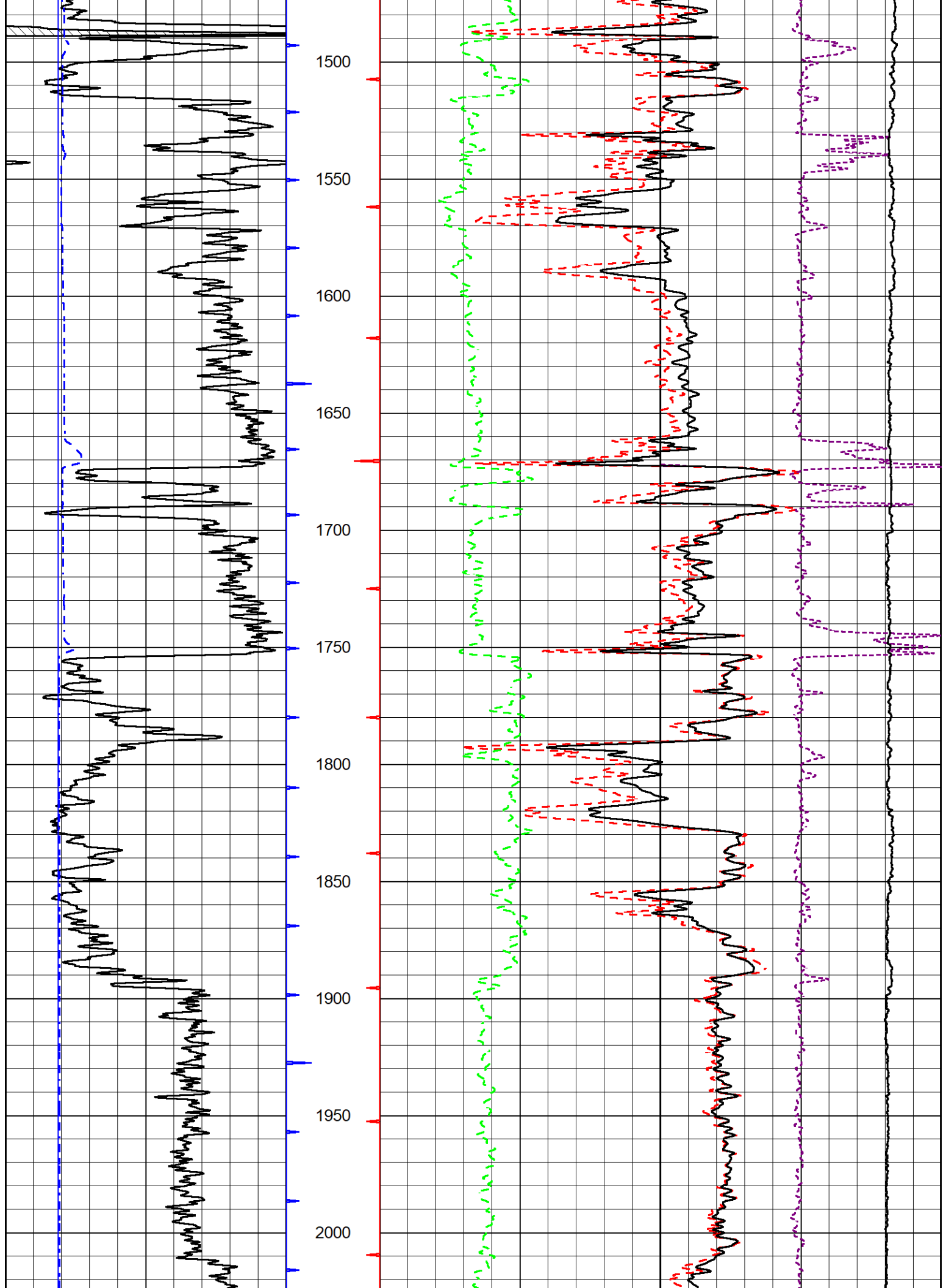
0	Gamma Ray (GAPI)	150
6	Caliper (in)	16

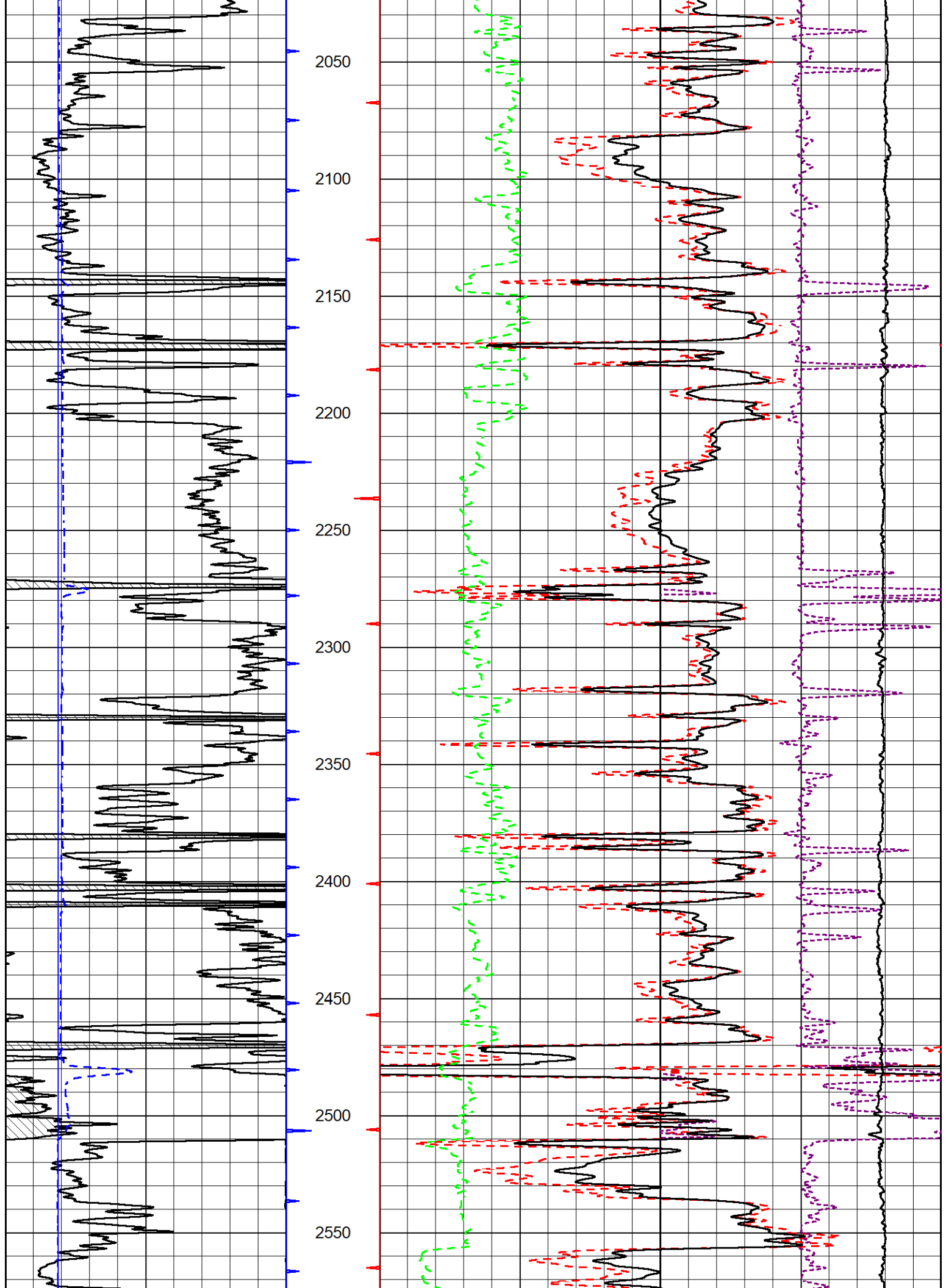
30	Compensated Density Porosity (pu)	-10
2	Bulk Density (g/cc)	3
10000	Line Tension (lb)	0
0	pecln	10
-0.25	Correction (g/cc)	0.25

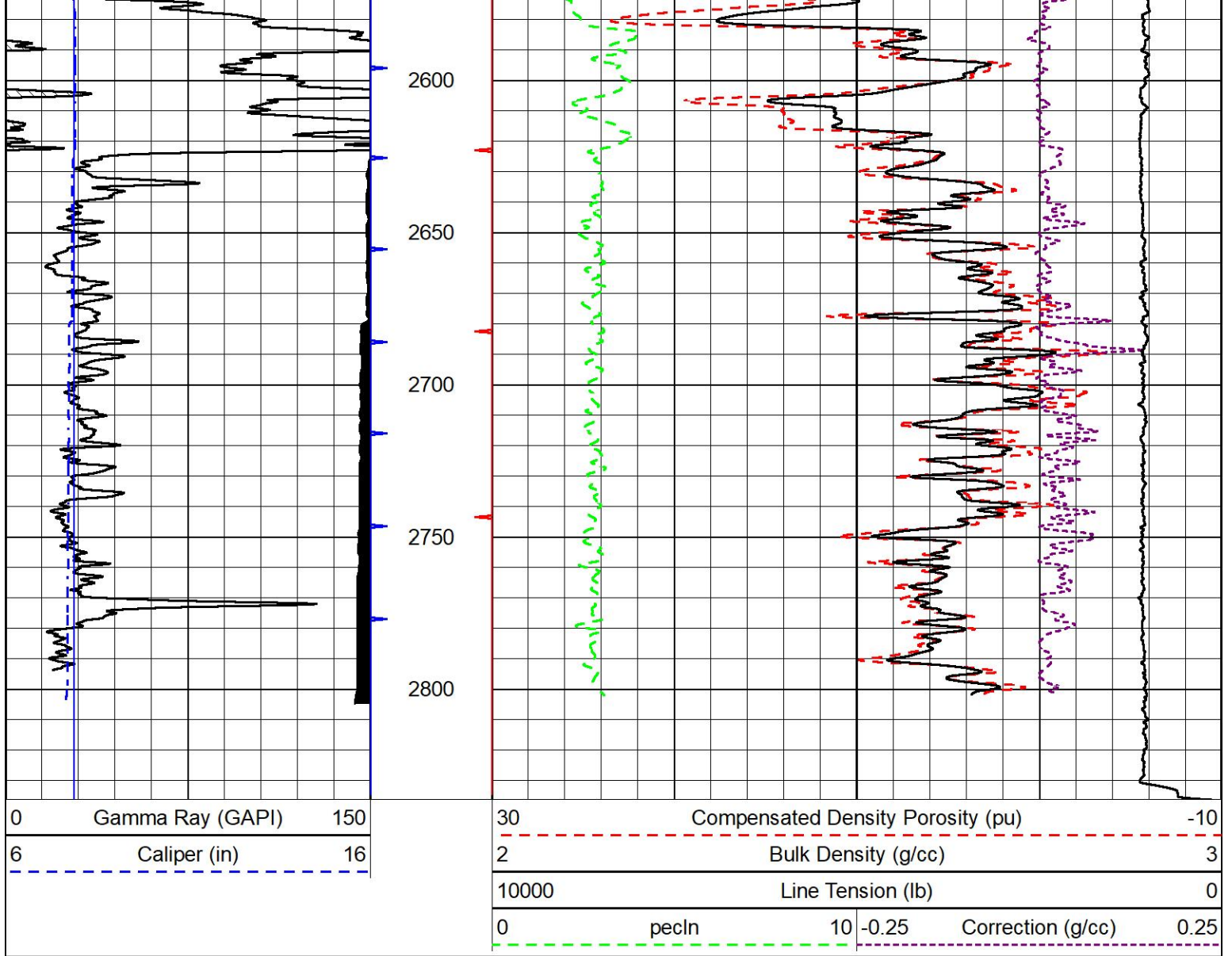








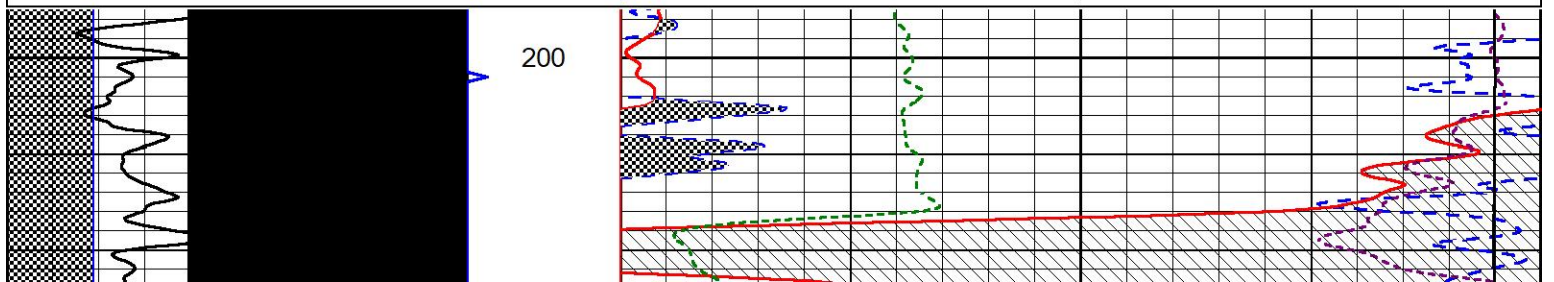
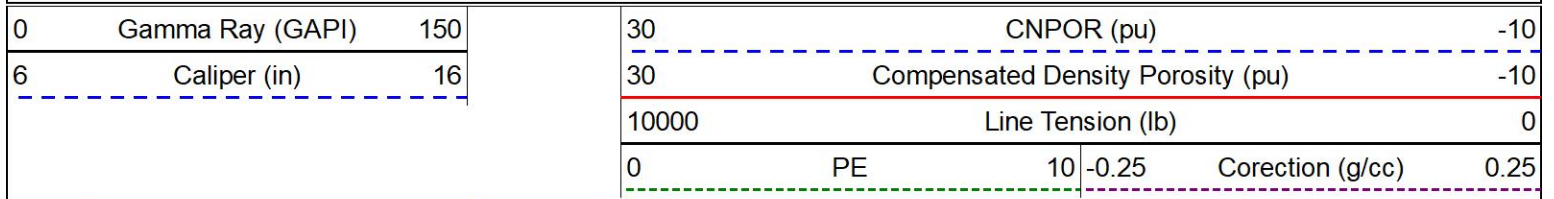


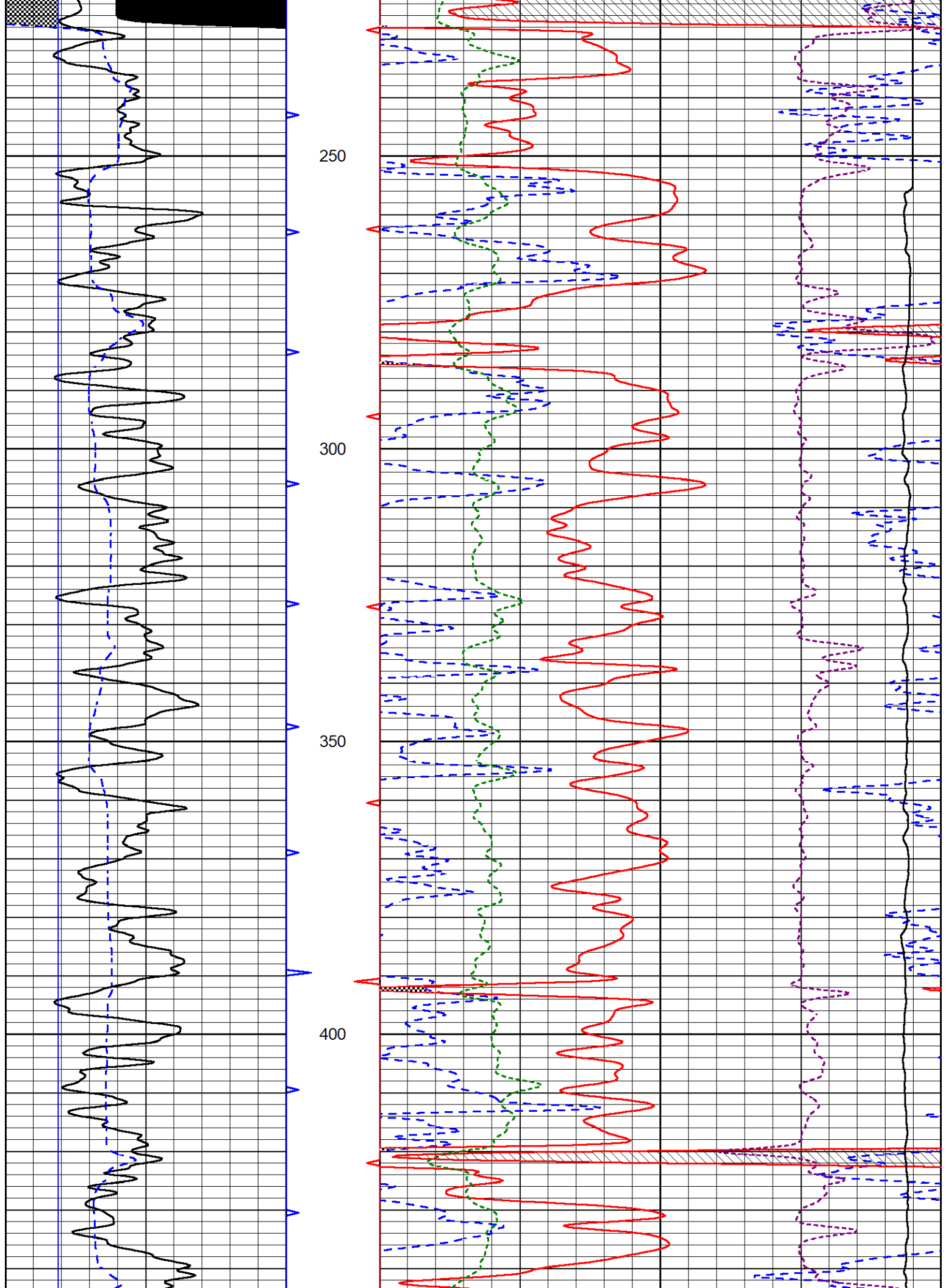


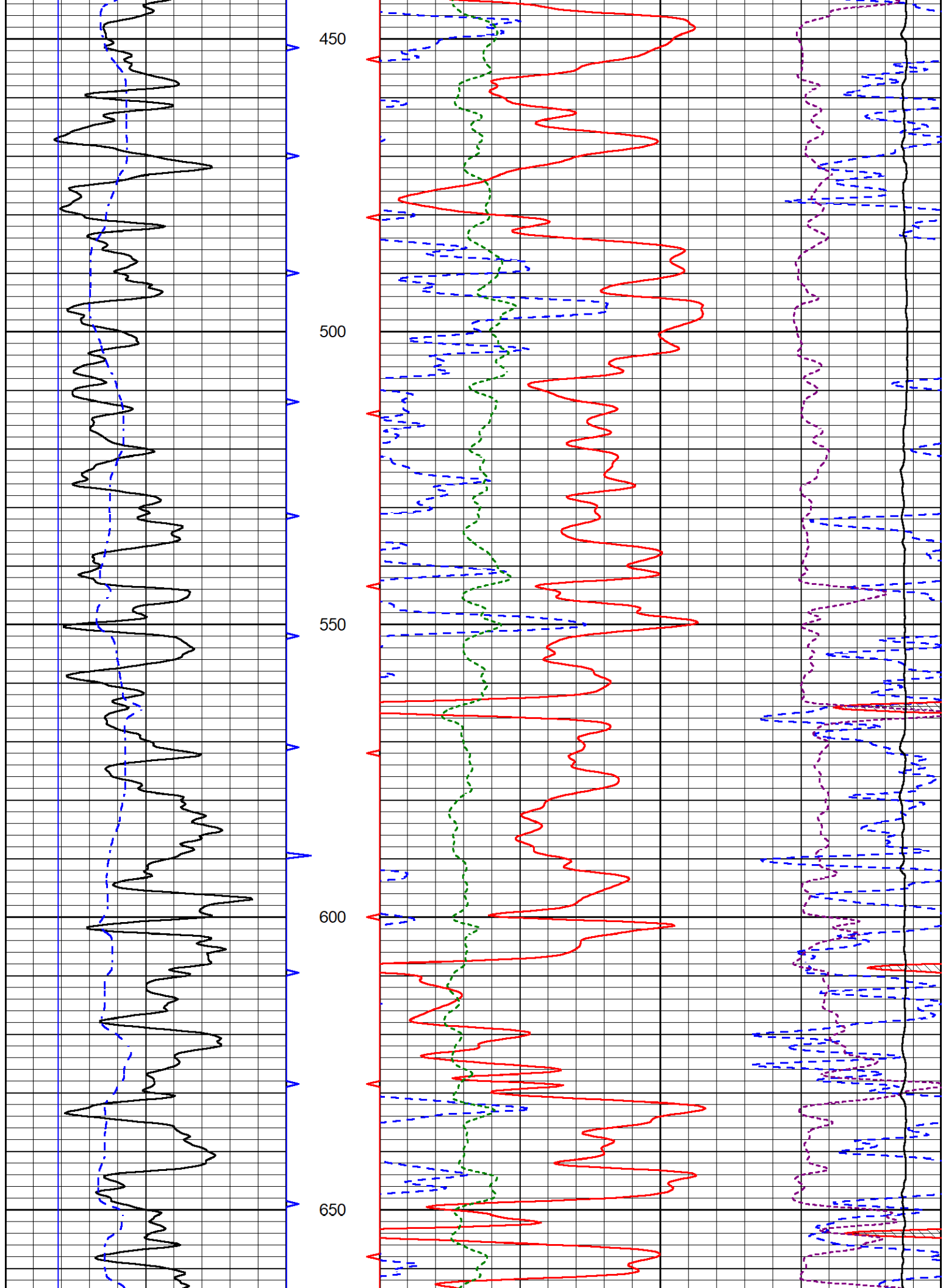
DETAIL SECTION

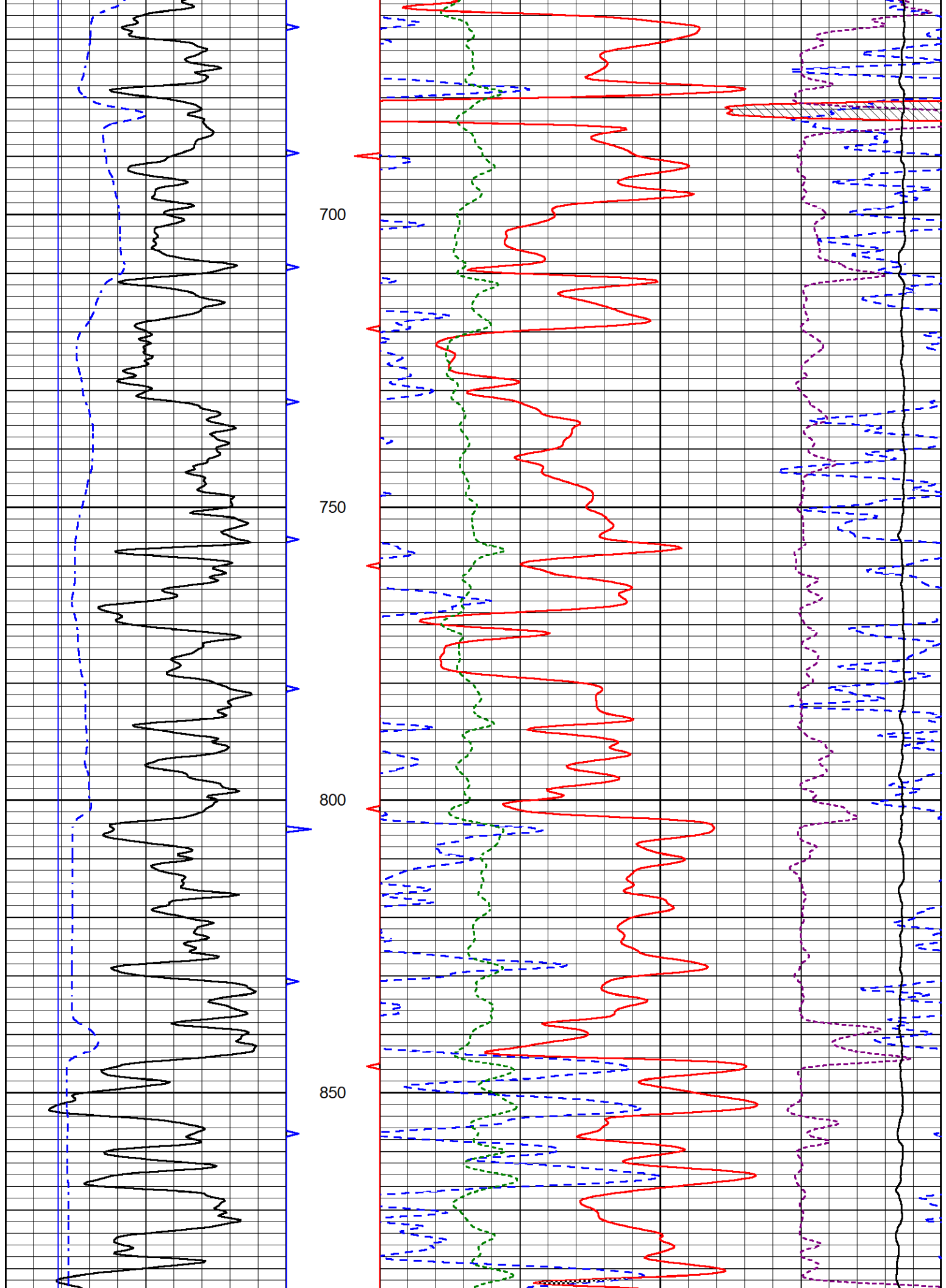
MAIN PASS

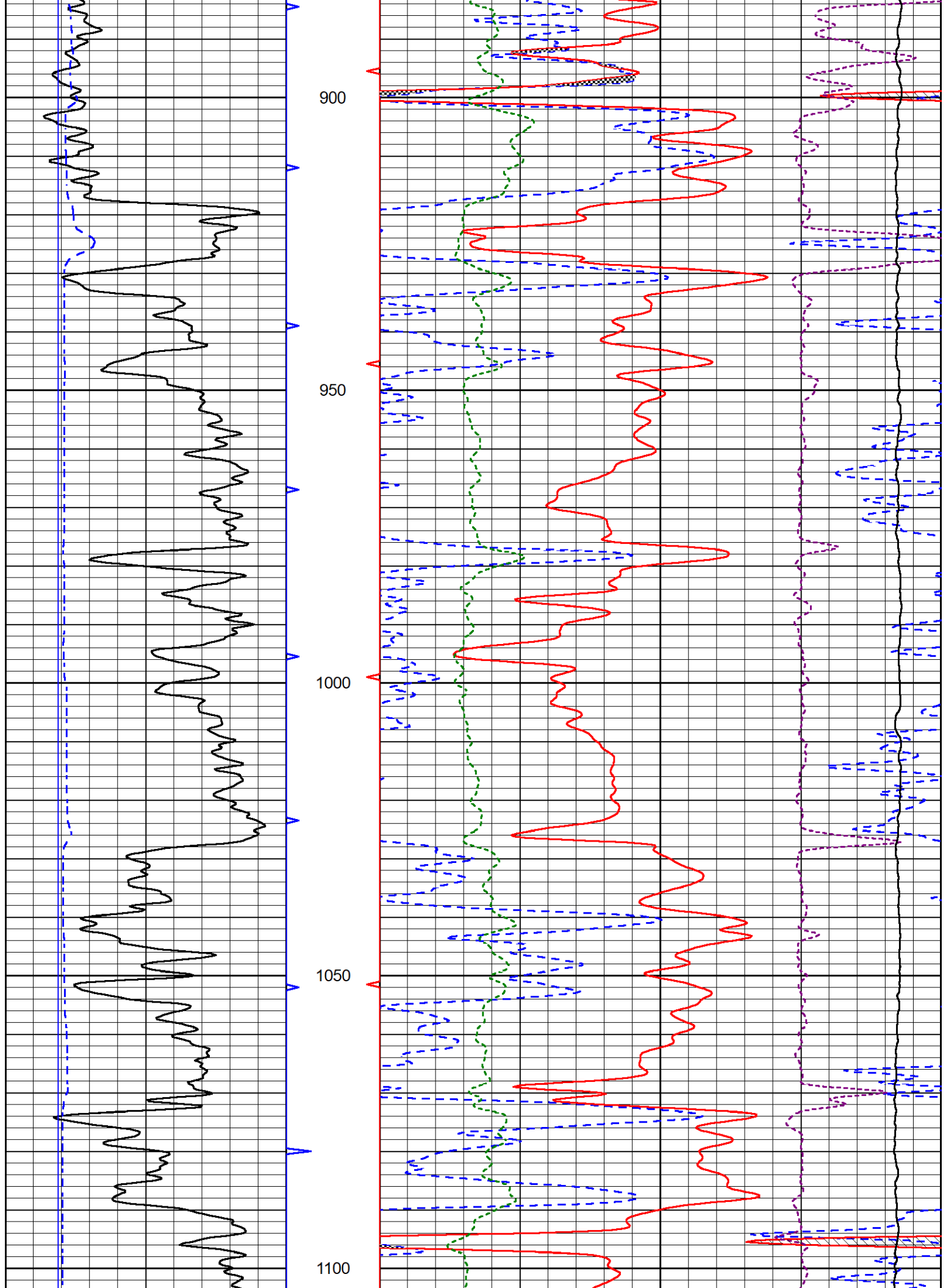
Database File white_ellis_dunkle_7.db
 Dataset Pathname stackml/pass3.1
 Presentation Format _CNDLS~2
 Dataset Creation Fri Jul 12 18:55:24 2024
 Charted by Depth in Feet scaled 1:240

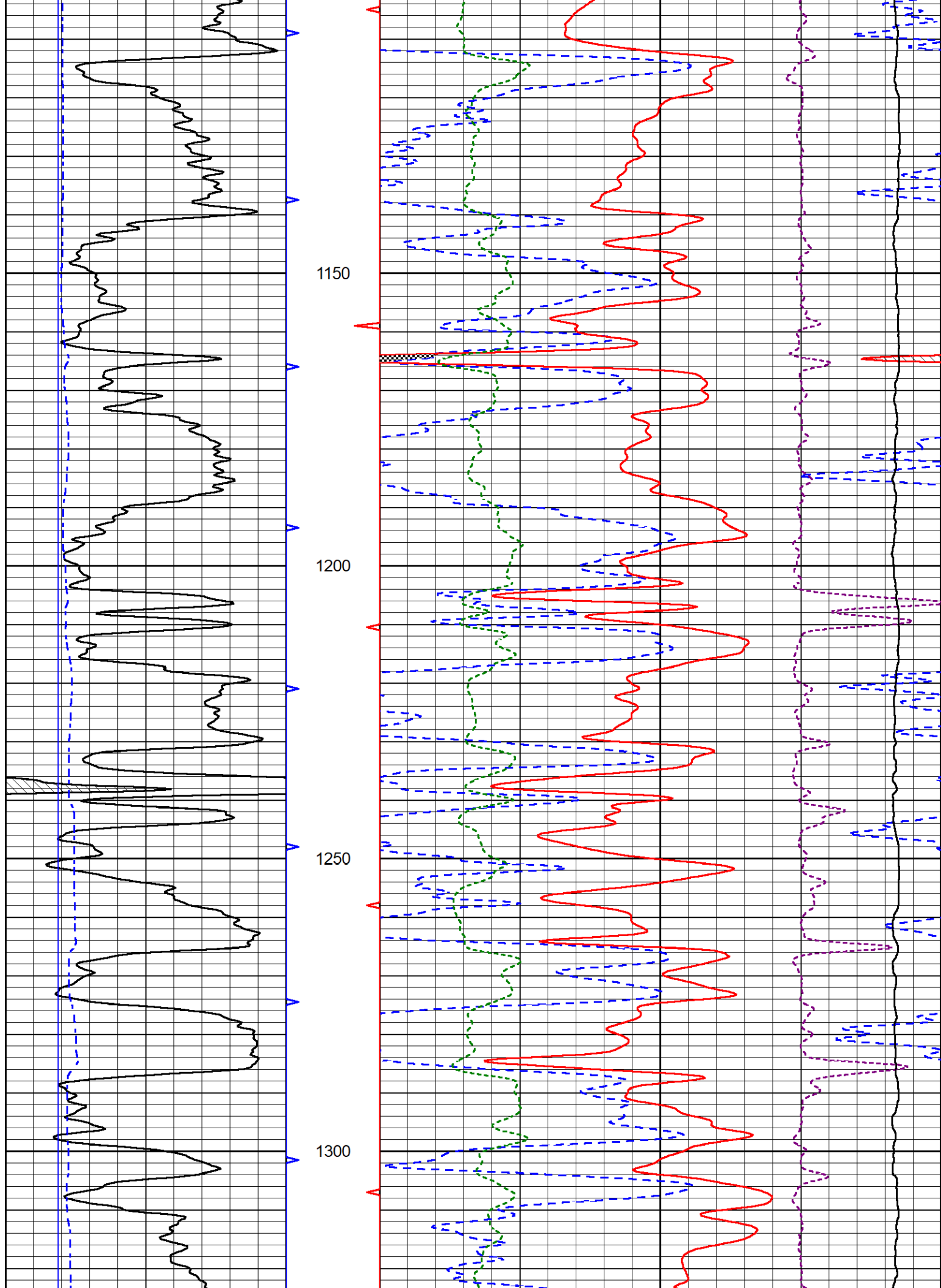


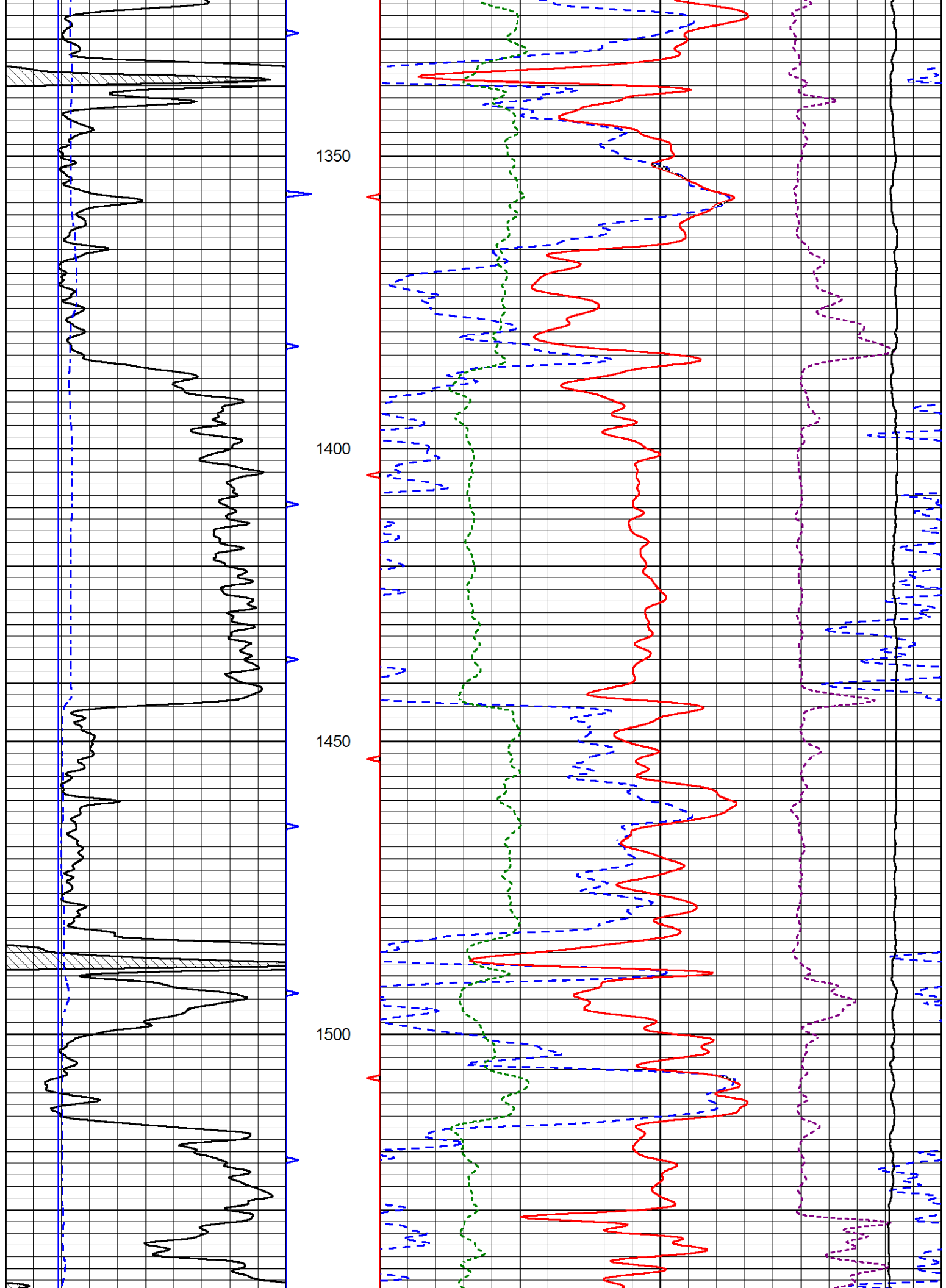


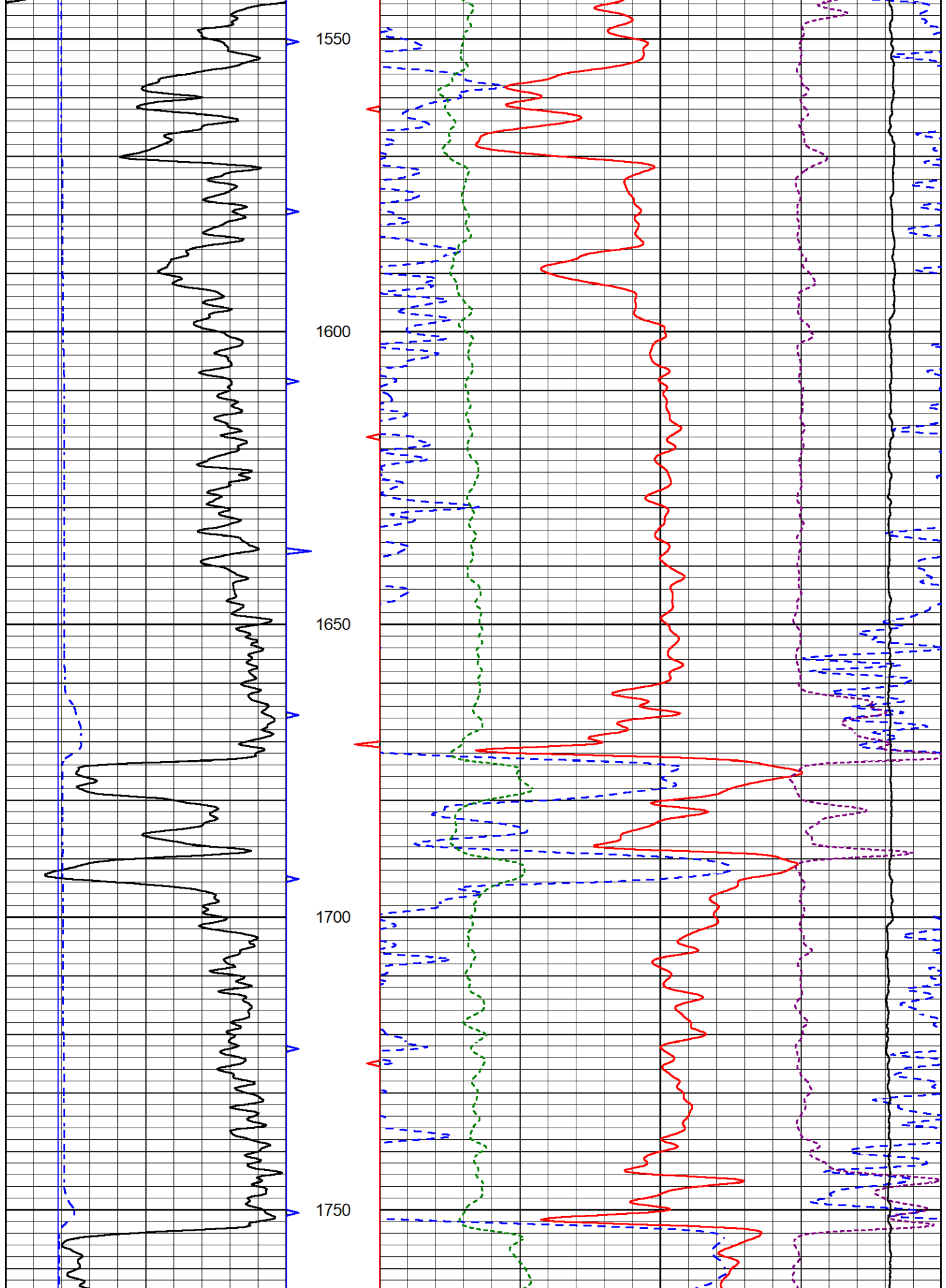


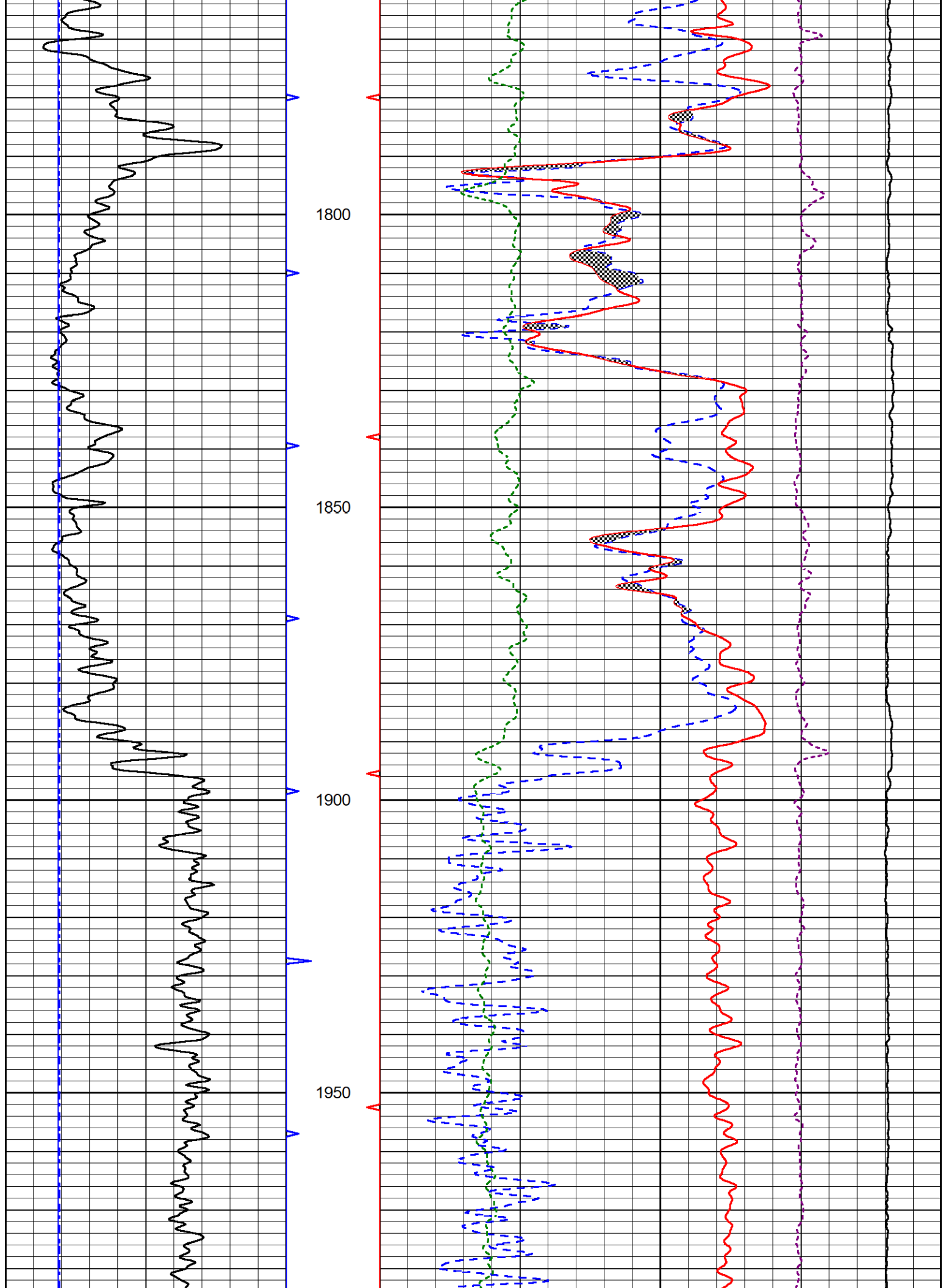


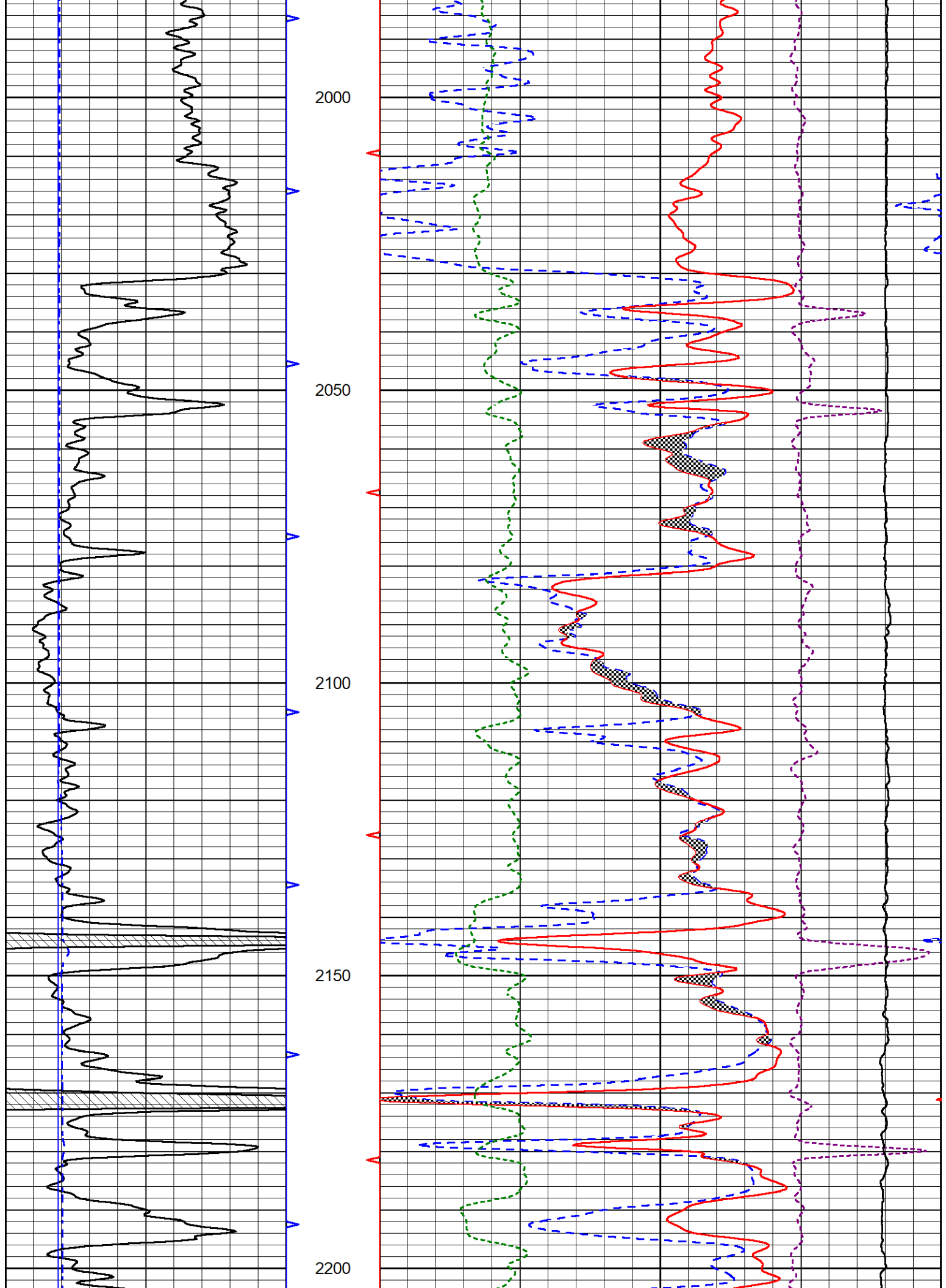


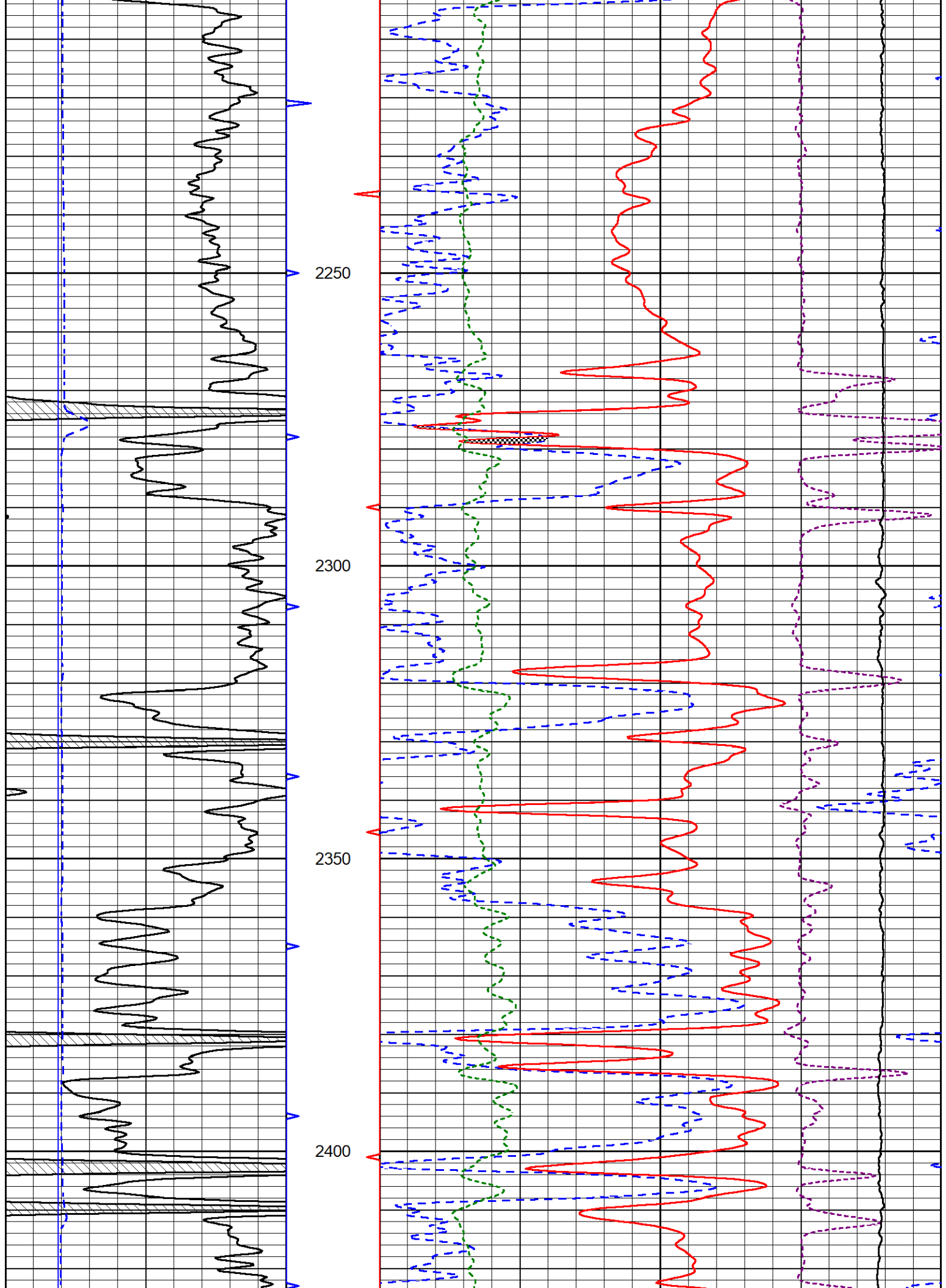


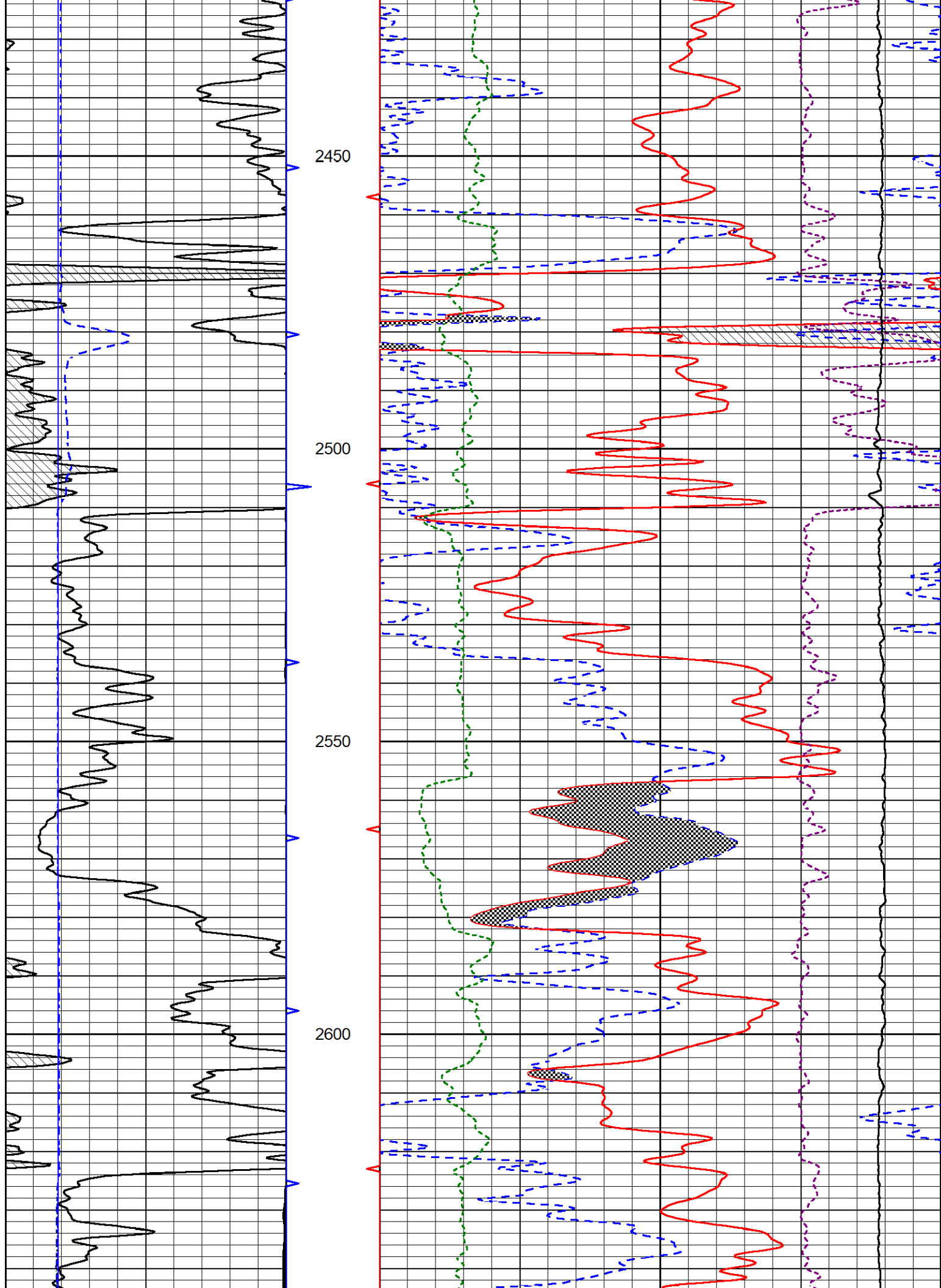


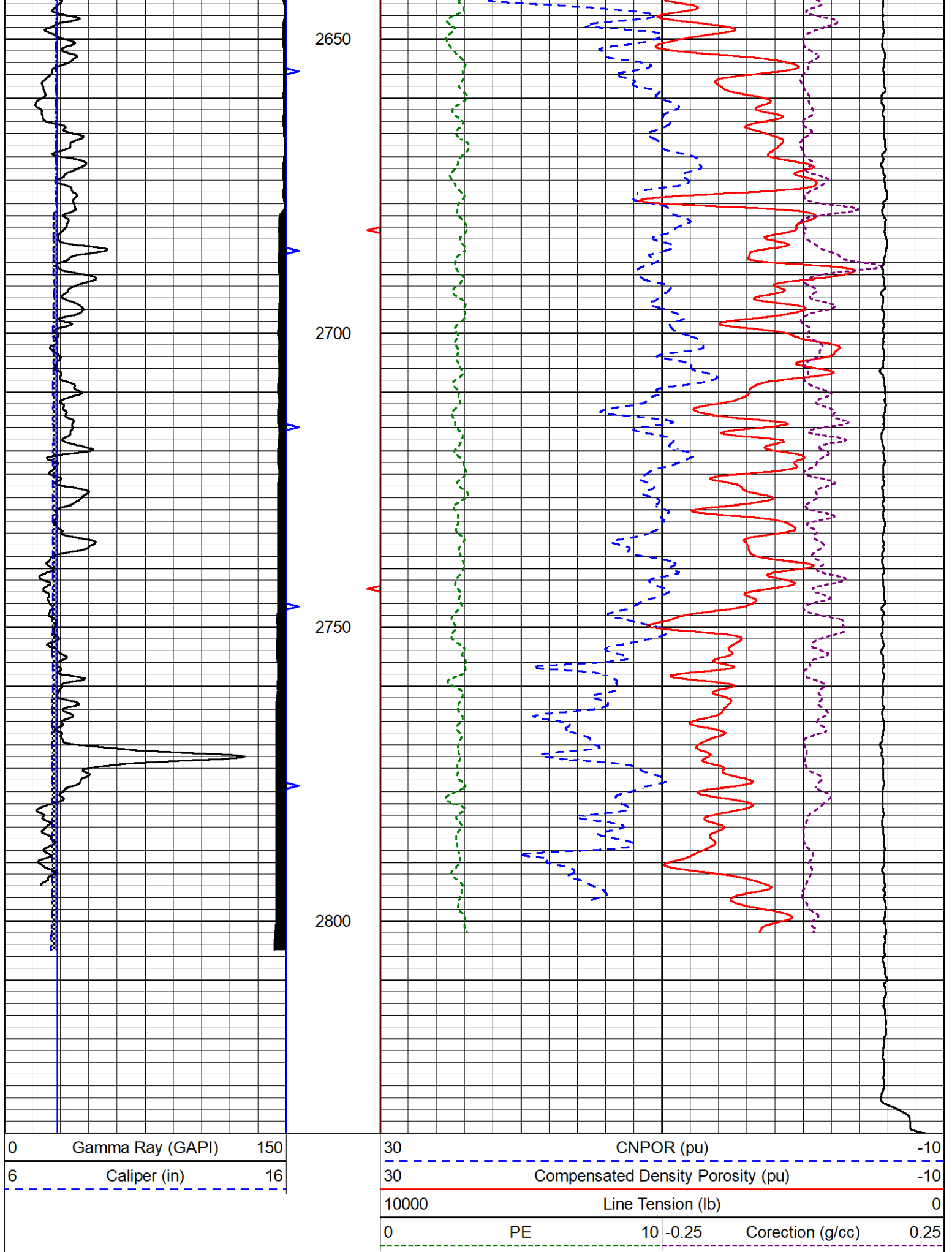














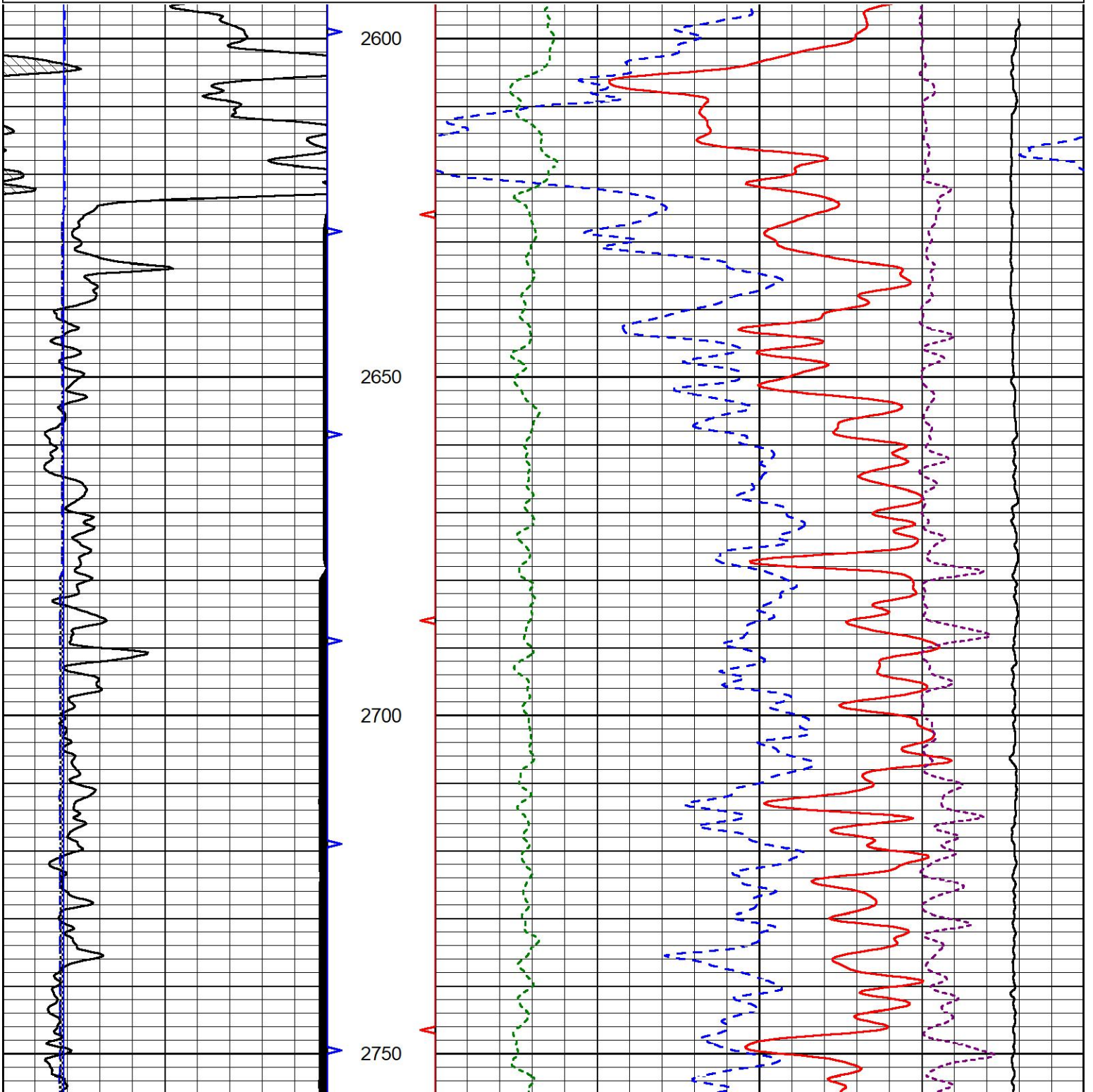
REPEAT SECTION

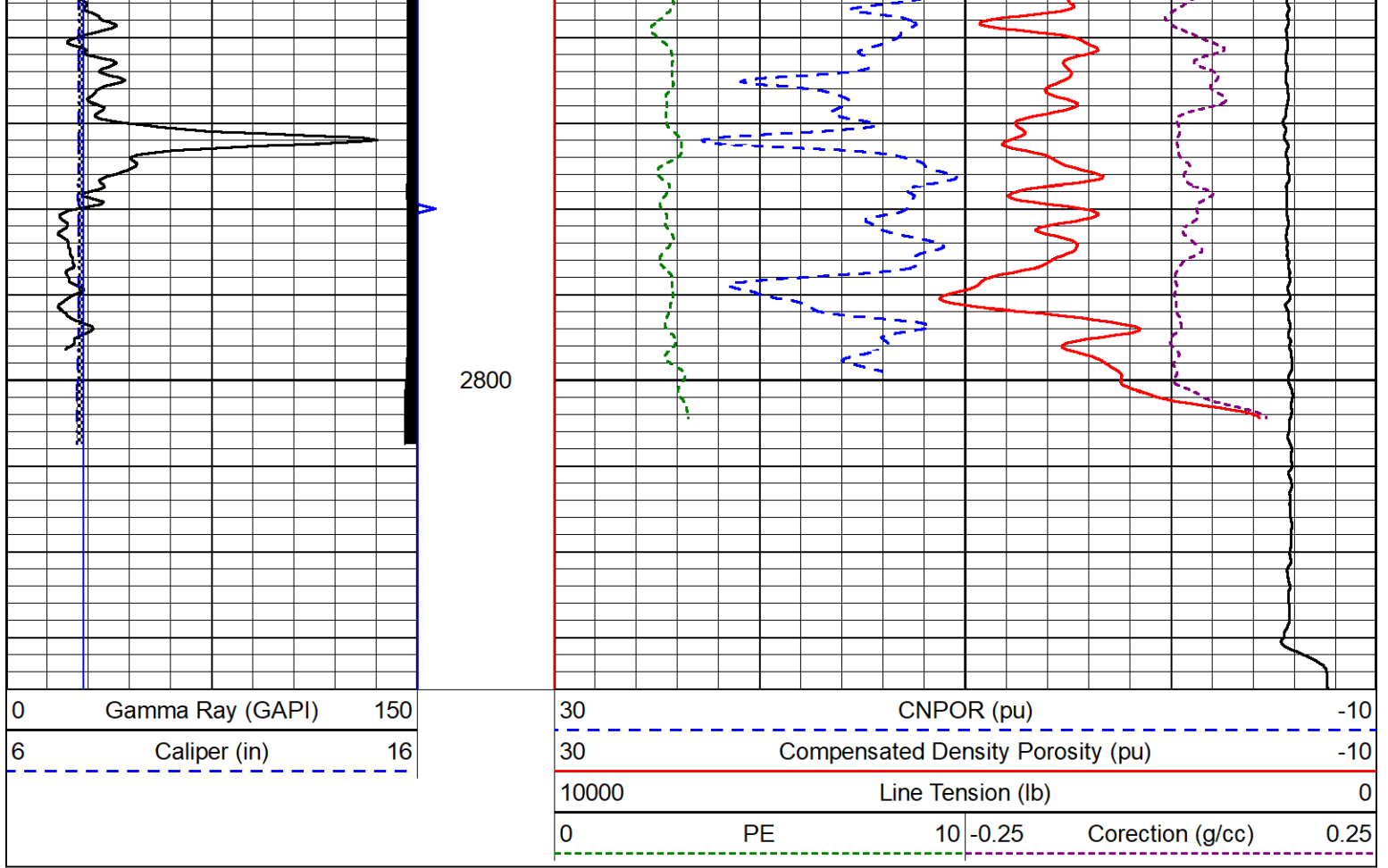
REPEAT PASS

Database File white_ellis_dunkle_7.db
 Dataset Pathname stackml/pass2.1
 Presentation Format _CNDLS~2
 Dataset Creation Fri Jul 12 18:02:51 2024
 Charted by Depth in Feet scaled 1:240

0	Gamma Ray (GAPI)	150
6	Caliper (in)	16

30	CNPOR (pu)	-10
30	Compensated Density Porosity (pu)	-10
10000	Line Tension (lb)	0
0	PE	0.25
10	Corection (g/cc)	0.25





Calibration Report

Database File white_ellis_dunkle_7.db
 Dataset Pathname stackml/pass3.1
 Dataset Creation Fri Jul 12 18:55:24 2024

Dual Induction Calibration Report

Serial-Model: 506-M&W
 Surface Cal Performed: Sun Jun 30 20:32:27 2024

Loop:	Readings		References			Results	
	Air	Loop	Air	Loop		m	b
Deep	84.211	428.152	0.000	255.800	mmho/m	0.465	-32.000
Medium	141.000	670.654	0.000	255.800	mmho/m	0.390	-10.000

Microlog Calibration Report

Serial-Model: 402-PSI STKBL ML
 Performed: Thu May 30 05:58:00 2024

	Readings		References			Results	
	Zero	Cal	Zero	Cal		m	b
Normal	0.0037	0.0043	0.0000	10.0000	Ohm-m	12000.0000	-0.5000
Inverse	0.1208	0.0013	0.0000	10.0000	Ohm-m	18500.0000	-0.7000
Caliper	1.0046	1.1419	5.5000	20.0000	in	50.0000	-44.6250

LITHODENSITY Calibration Report

Serial Number: 703-03

Serial Number: 200-00
 Tool Model: STEP LITHO Short
 Performed: Fri May 31 13:59:15 2024

Source:

	Win1	Win2	Win3	Win4	Win5	Win6	Win7	Win8	
Background:									
SS:	56	59	223	276	25	75	46	1	cps
LS:	83	90	344	441	51	132	90	3	cps
Aluminum:									
SS:	1063	1260	2893	2631	48	80	48	3	cps
LS:	1179	2084	3854	1823	62	133	86	5	cps
Magnesium:									
SS:	1756	2035	4740	3894	55	79	49	4	cps
LS:	4981	8390	15059	6054	115	127	85	14	cps
Aluminum+Iron:									
SS:	676	887	2426	2310	45	79	52	2	cps
LS:	700	1495	3280	1630	60	131	90	5	cps

	Density Actual	Calibrated		PE Actual	Calibrated	Quality
Background:						
SS:						0.236
LS:						0.189
Aluminum:						
SS:	2.6000	2.6000	g/cc			0.249
LS:	2.6000	2.6000	g/cc			0.216
Magnesium:						
SS:	1.6800	1.6800	g/cc	2.5700	2.5700	0.232
LS:	1.6800	1.6800	g/cc	2.5700	2.5700	0.198
Aluminum+Iron:						
SS:					6.1800	0.208
LS:					6.1800	0.188

Caliper: Reference: Reading:
 Small Ring: 6.0 in 1.0
 Large Ring: 14.0 in 1.0
 Gain: 12.765
 Offset: 1.800

Compensated Neutron Calibration Report

Serial Number: 210
 Tool Model: M&W

CALIBRATION

Detector	Readings	Target	Normalization
Short Space	6240.00 cps	1000.00 cps	1.6025
Long Space	460.00 cps	1000.00 cps	1.9500

Gamma Ray Calibration Report

Serial Number: 105
 Tool Model: M&W
 Performed: Sat Oct 21 23:48:19 2023

Calibrator Value: 500.0 GAPI
 Background Reading: 24.0 cps
 Calibrator Reading: 637.0 cps



MIDWEST WIRELINE

Company	White & Ellis Drilling Inc
Well	Dunkle 7
Field	
County	Butler
State	Kansas