



MIDWEST WIRELINE

DUAL INDUCTION LOG

Company White & Ellis Drilling Inc

Well Dunkle 7

Field

County

Butler

State

Kansas

Location:

API #: 15-015-24232-00-00
330 FWL & 1420 FSL

Other Services

SEC 5 TWP 25S RGE 5E

CNL/CDL
MEL/BHCS

Company White & Ellis Drilling Inc
Well Dunkle 7
Field
County Butler
State Kansas

Permanent Datum Ground Level Elevation 1396
Log Measured From Kelly Bushing
Drilling Measured From Kelly Bushing

Elevation
K.B. 1405
D.F.
G.L. 1396

Date	7/12/2024
Run Number	One
Depth Driller	2836
Depth Logger	2831
Bottom Logged Interval	2830
Top Log Interval	200
Casing Driller	9.625 @ 207
Casing Logger	217
Bit Size	7.875
Type Fluid in Hole	Chemical
Salinity, ppm CL	2400
Density / Viscosity	9.55 43
pH / Fluid Loss	10.0 9.6
Source of Sample	FLOWLINE
Rm @ Meas. Temp	1.1 @ 75
Rmt @ Meas. Temp	.83 @ 75
Rmc @ Meas. Temp	1.49 @ 75
Source of Rmf / Rmc	CHARTS
Rm @ BHT	.79 @ 104
Operating Rig Time	4 Hours
Max Rec. Temp. F	104
Equipment Number	110
Location	HAYS
Recorded By	J. Henrickson
Witnessed By	Bill Stout

<<< Fold Here >>>

All interpretations are opinions based on inferences from electrical or other measurements and Midwest Wireline LLC cannot and does not guarantee the accuracy or correctness of any interpretation, and Midwest Wireline LLC will not be liable or responsible for any loss, costs, damages, or expenses incurred or sustained by anyone resulting from any interpretation made by any of our officers, agents or employees.

Comments

N/A DENOTES NOT AVAILABLE OR NON-APPLICABLE.

Potwin Kansas
Southeast to 50th, 1 1/2 E, N Into

Log Measured From: Kelly Bushing 9 Ft. Above Permanent Datum

THANK YOU FOR USING MIDWEST WIRELINE LLC
785-625-3858

Your Midwest Wireline Crew

Engineer: J. Henrickson
Operator:
Operator:
Operator:

This Log Record Was Witnessed By

Primary Witness: Bill Stout
Secondary Witness:
Secondary Witness:
Secondary Witness:

Log Variables

DatabaseC:\ProgramData\Warrior\Data\white_ellis_dunkle_7.db
Dataset field/well/stackml/pass3.1/_vars_

Top - Bottom

A	BOREID in	BOTTEMP degF	CASEOD in	CASETHCK in	FLUIDDEN g/cc	M	MATRXDEN g/cc
1	7.875	104	5.5	0	1	2	2.71
NPORSEL	PERFS	SNDERR mmho/m	SNDERRM mmho/m	SPSHIFT mV	SRFTEMP degF	SZCOR	TDEPTH ft
Limestone	No	0	0	85	95	Off	2831

Variable Description

A : Cement Factor (a)
BOREID : Borehole I.D.
BOTTEMP : Bottom Hole Temperature
CASEOD : Casing O.D.
CASETHCK : Casing Thickness
FLUIDDEN : Fluid Density
M : Cement Exp (m)
MATRXDEN : Matrix Density

NPORSEL : Neutron Porosity Curve Select
PERFS : Perforation Flag
SNDERR : Deep Sonde Error Correction
SNDERRM : Medium Sonde Error Correction
SPSHIFT : S.P. Baseline Offset
SRFTEMP : Surface Temperature
SZCOR : CN Size Cor. ?
TDEPTH : Total Depth

Sensor	Offset (ft)	Schematic	Description	Length (ft)	O.D. (in)	Weight (lb)	
GR	40.23		GR-M&W (105)	3.00	3.50	50.00	
CNLSC	37.13		CNT-M&W (210)	5.00	3.50	100.00	
CNSSC	36.38						
				MWLith-STEP LITHO Short (703-03)	8.40	5.00	250.00
LCAL	28.21						
LLW8N	28.21						
LLW7N	28.21						
LLW6N	28.21						
LLW5N	28.21						
LLW4N	28.21						
LLW3N	28.21						
LLW2N	28.21			ML-PSI STKBL ML (402)	7.58	4.00	65.00
LLW1N	28.21						
LSLOCK	27.96						
LLLOCK	27.96						
PELTMPR	27.96						
LSHVNG	27.96						
LLHVNG	27.96						
LSW8N	27.71						
LSW7N	27.71						
LSW6N	27.71						

LSW5N	27.71		DIL-M&W (506)	18.25	3.50	220.00
LSW4N	27.71					
LSW3N	27.71					
LSW2N	27.71					
LSW1N	27.71					
MCAL	19.58					
MI	19.58					
MN	19.58					
RLL3F	15.50					
RLL3	15.50					
CILD	8.33					
CILM	4.50					
SP	0.20					

Dataset: white_ellis_dunkle_7.db: field/well/stackml/pass3.1
 Total length: 42.23 ft
 Total weight: 685.00 lb
 O.D.: 5.00 in

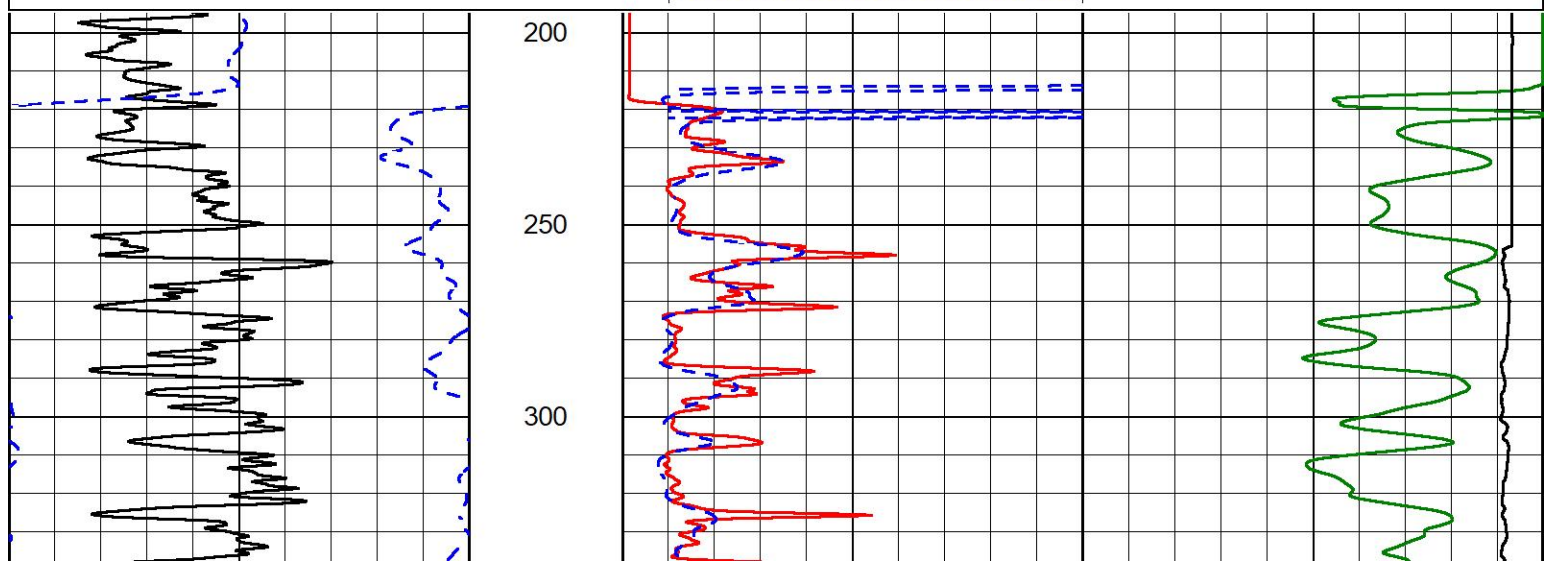


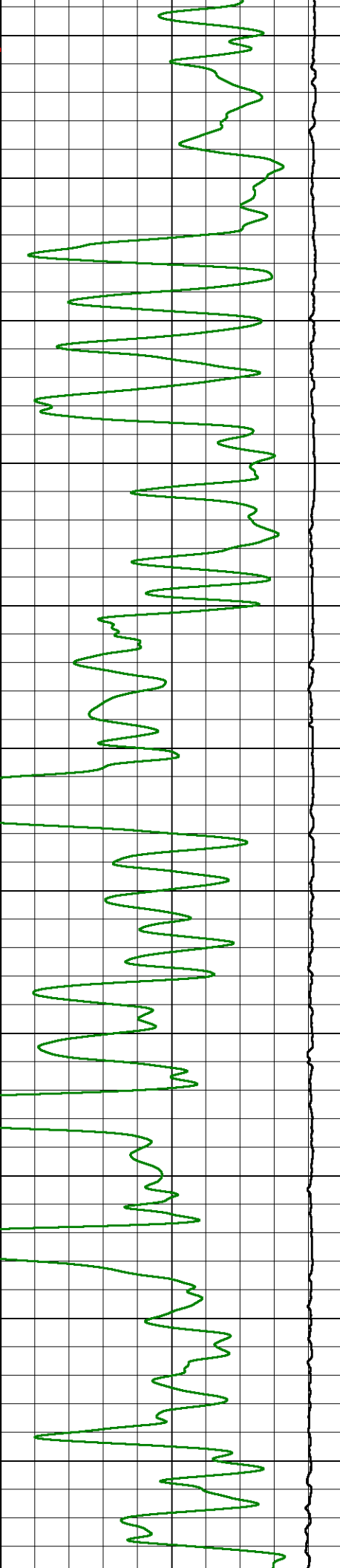
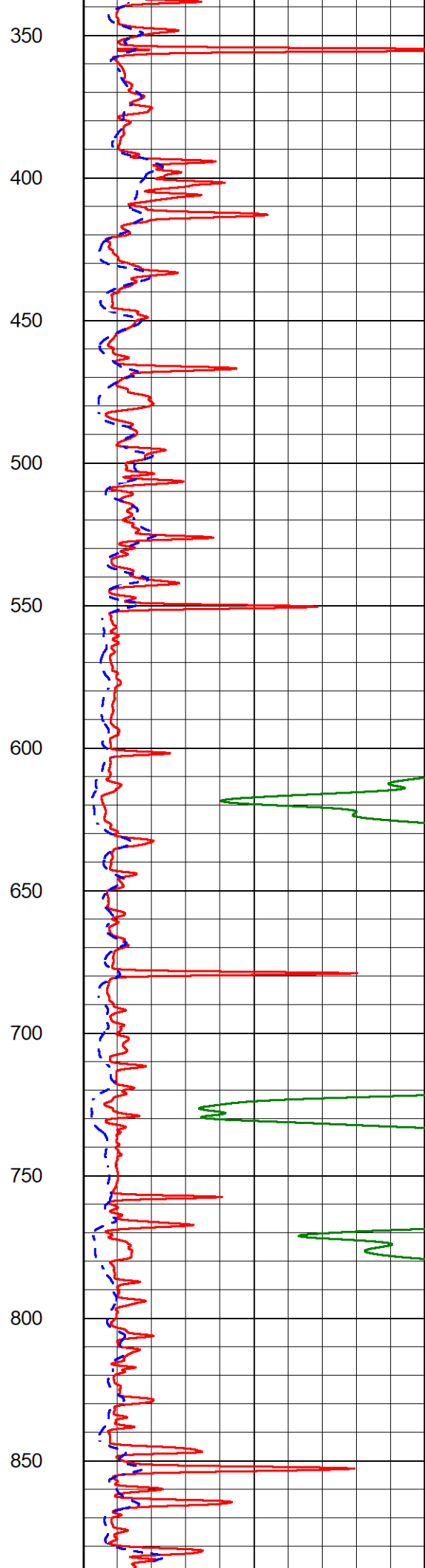
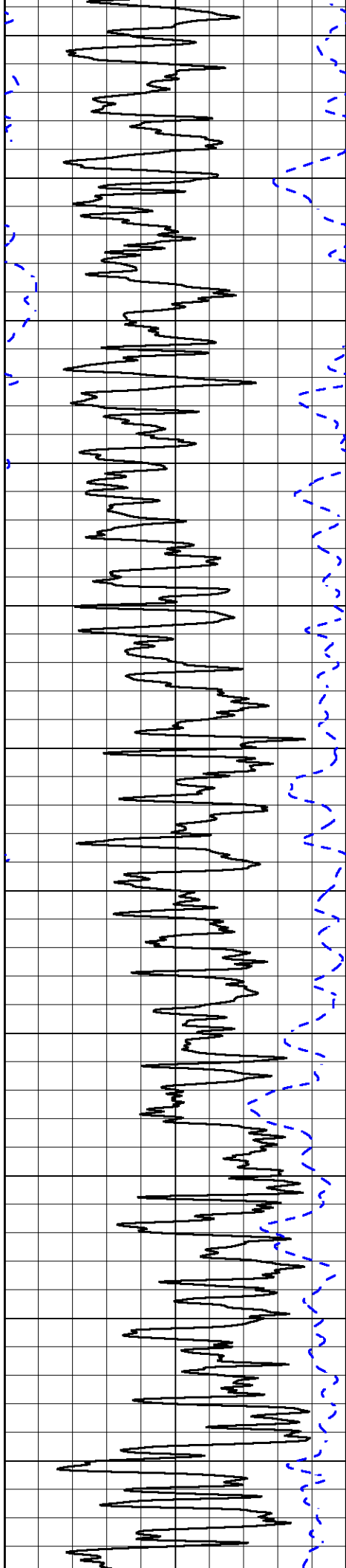
2" SCALE RESISTIVITY

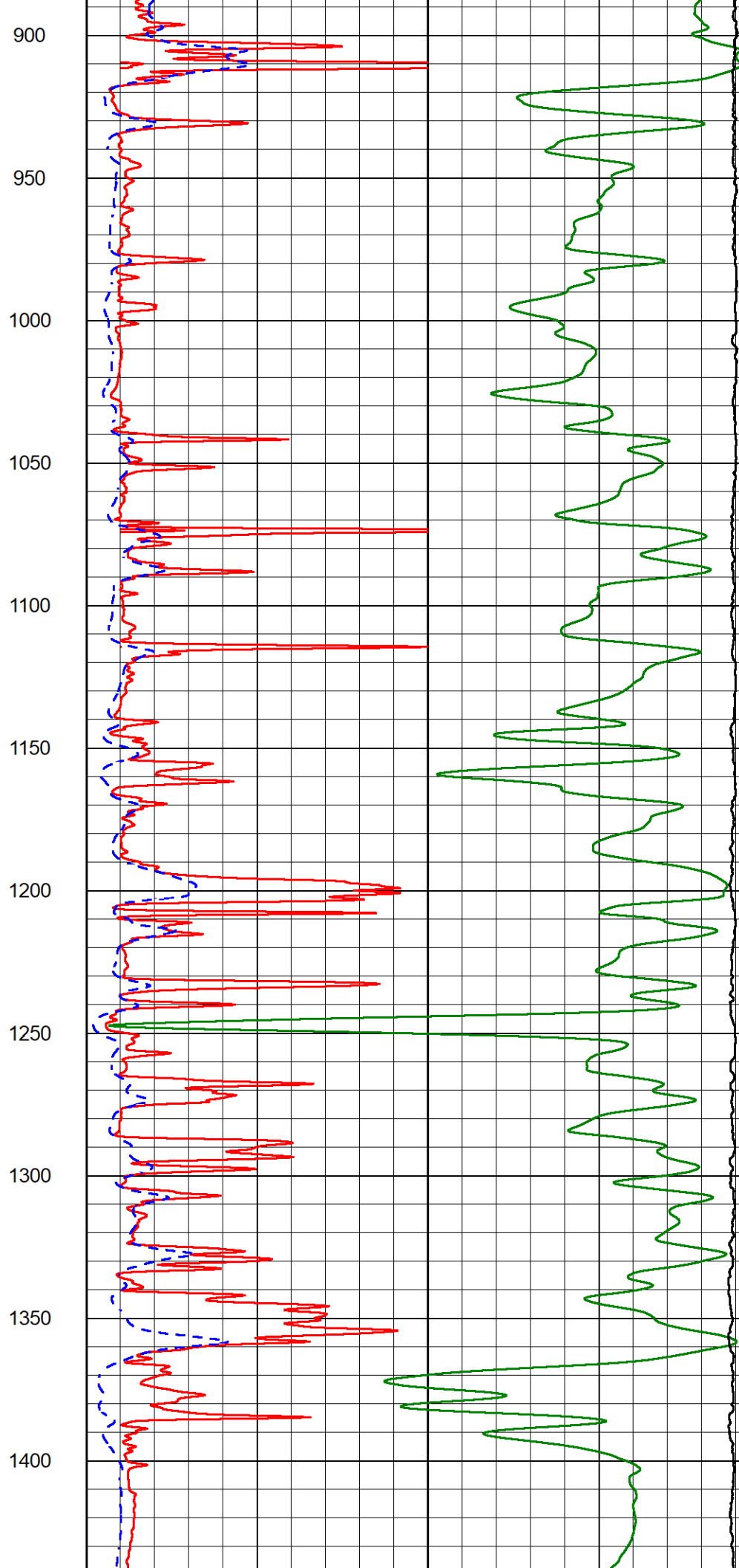
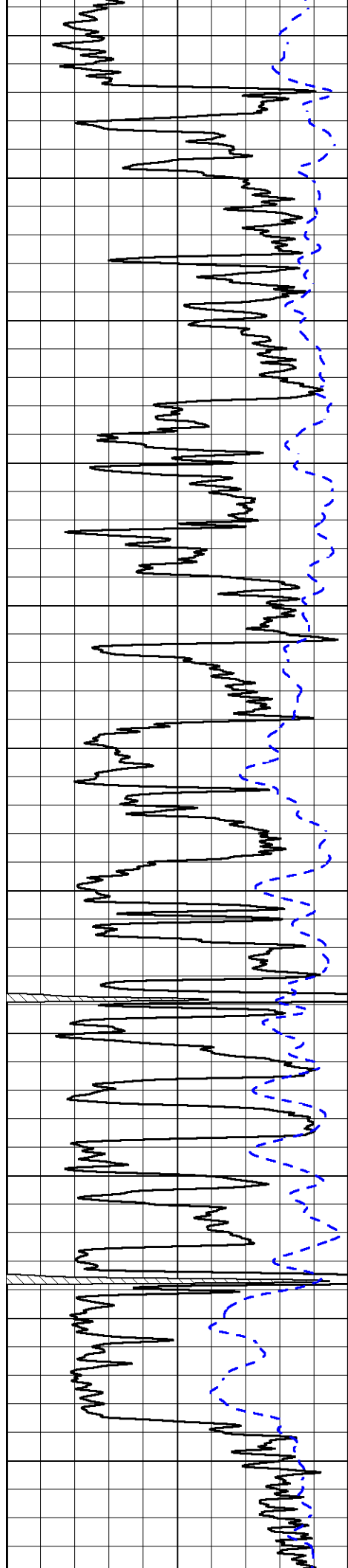
MAIN PASS

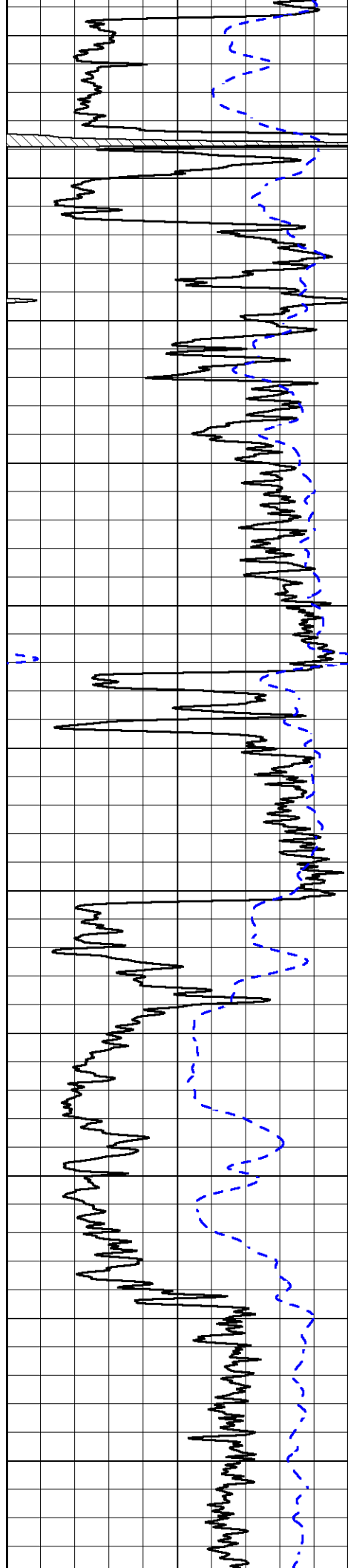
Database File: white_ellis_dunkle_7.db
 Dataset Pathname: stackml/pass3.2
 Presentation Format: _dil2in
 Dataset Creation: Fri Jul 12 18:55:02 2024
 Charted by: Depth in Feet scaled 1:600

0	Gamma Ray (GAPI)	150	1000	Conductivity (mmho/m)	0
-200	SP (mV)	0	15000	Line Tension (lb)	0
		0		Shallow Resistivity (Ohm-m)	50
		0		Deep Resistivity (Ohm-m)	50
		Shallow Resistivity			
		50	(Ohm-m)	200	
		50	Deep Resistivity (Ohm-m)	200	

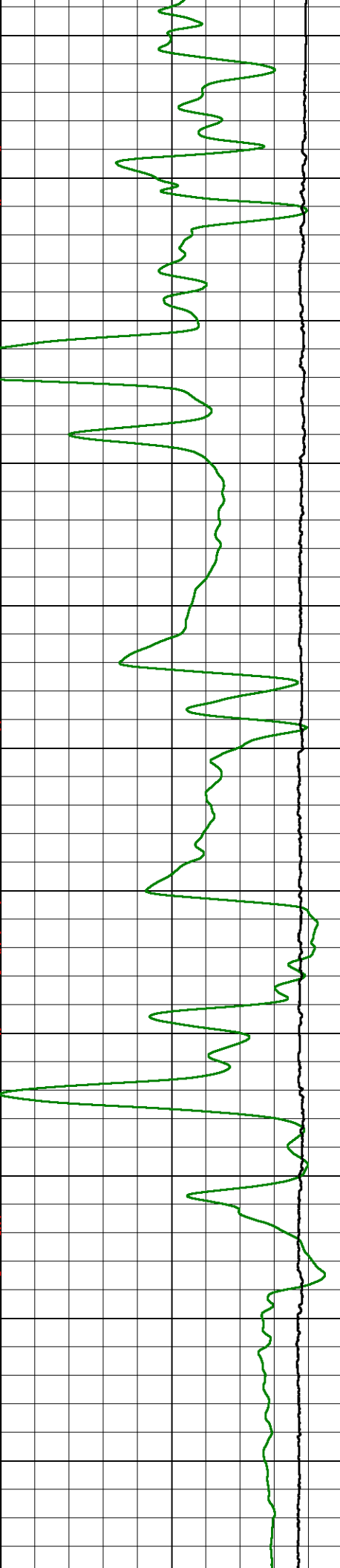
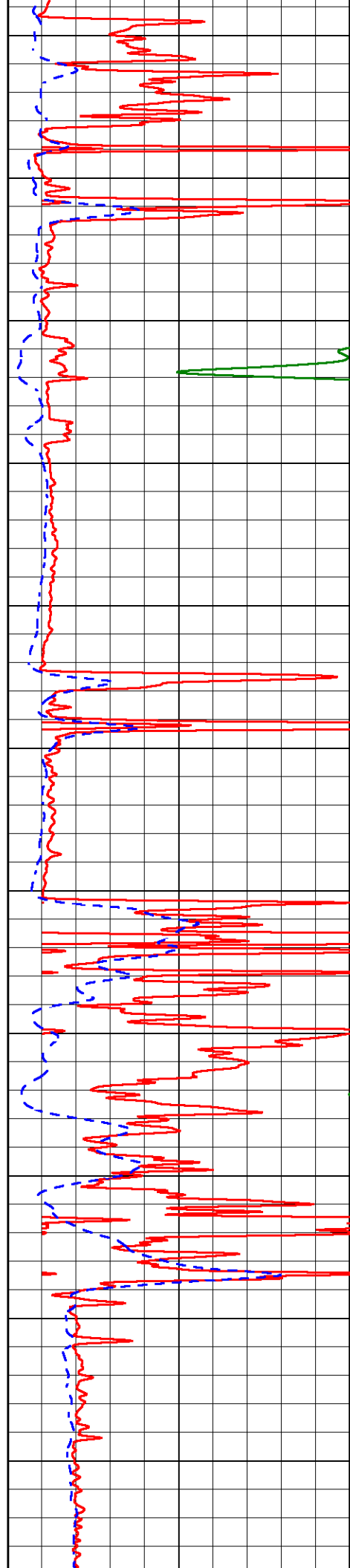


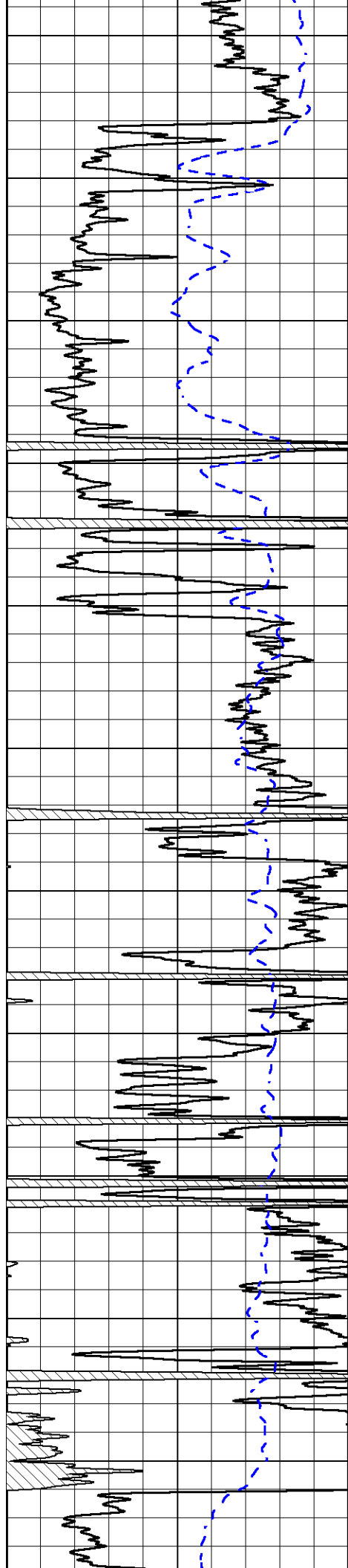






1450
1500
1550
1600
1650
1700
1750
1800
1850
1900
1950





2000

2050

2100

2150

2200

2250

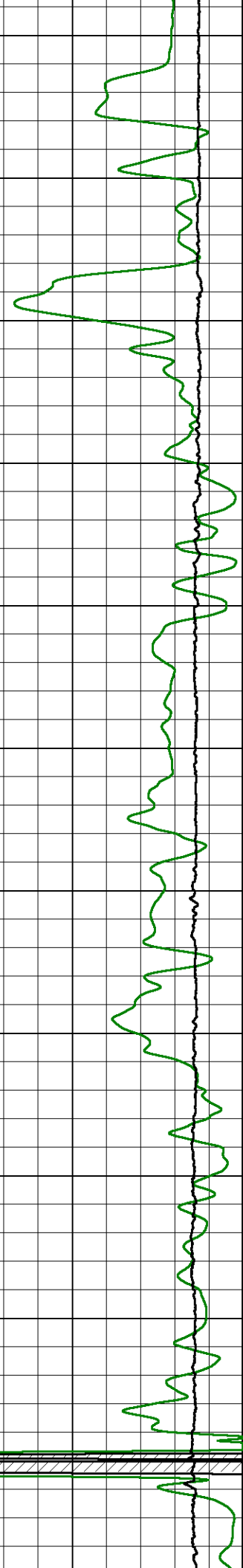
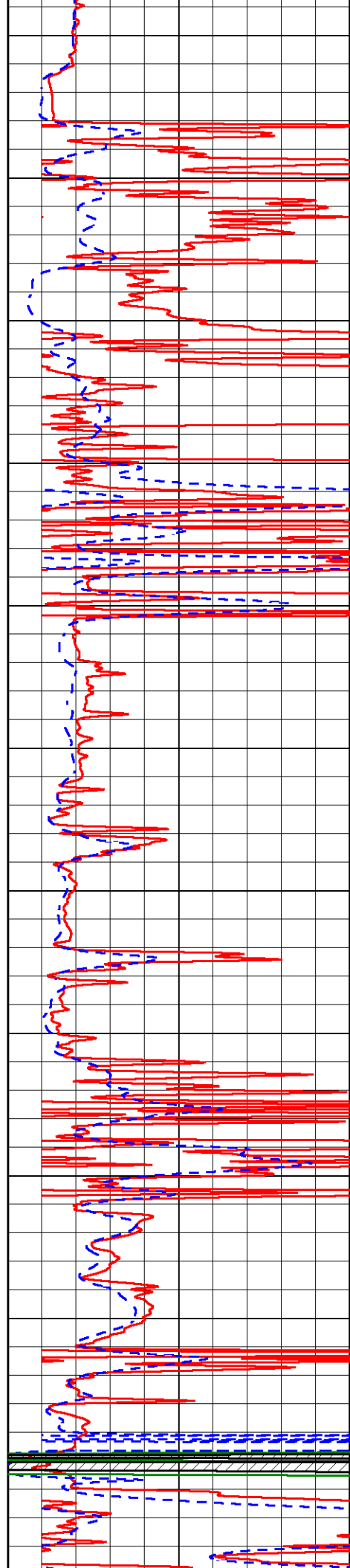
2300

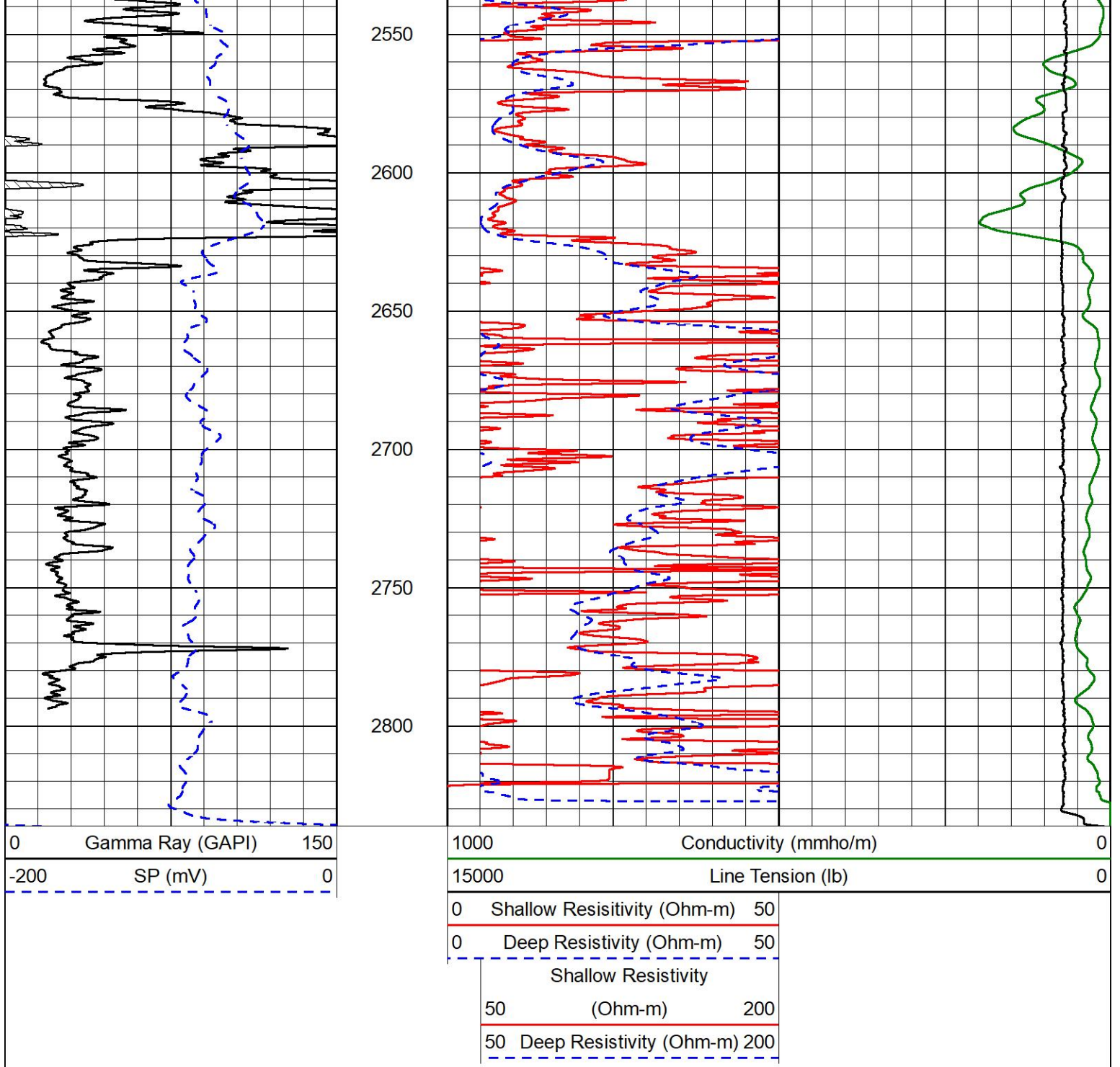
2350

2400

2450

2500



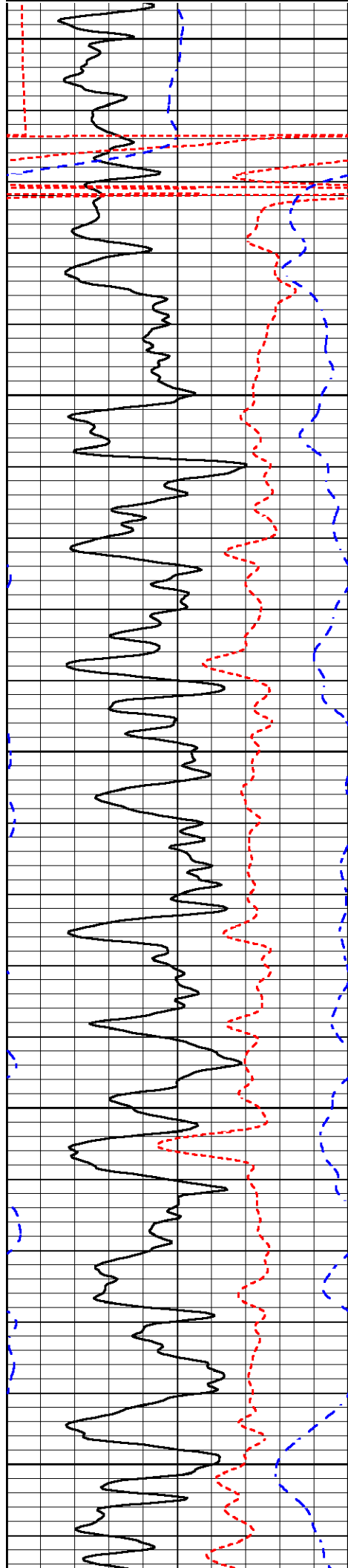


DETAIL SECTION

MAIN PASS

Database File white_ellis_dunkle_7.db
 Dataset Pathname stackml/pass3.1
 Presentation Format _dil
 Dataset Creation Fri Jul 12 18:55:24 2024
 Charted by Depth in Feet scaled 1:240

0	Gamma Ray (GAPI)	150	0.2	Deep Resistivity (Ohm-m)	2000
50	RXORT	250	0.2	Medium Resistivity (Ohm-m)	2000
-200	SP (mV)	0	0.2	RLL3 (Ohm-m)	2000
			10000	Line Tension (lb)	0



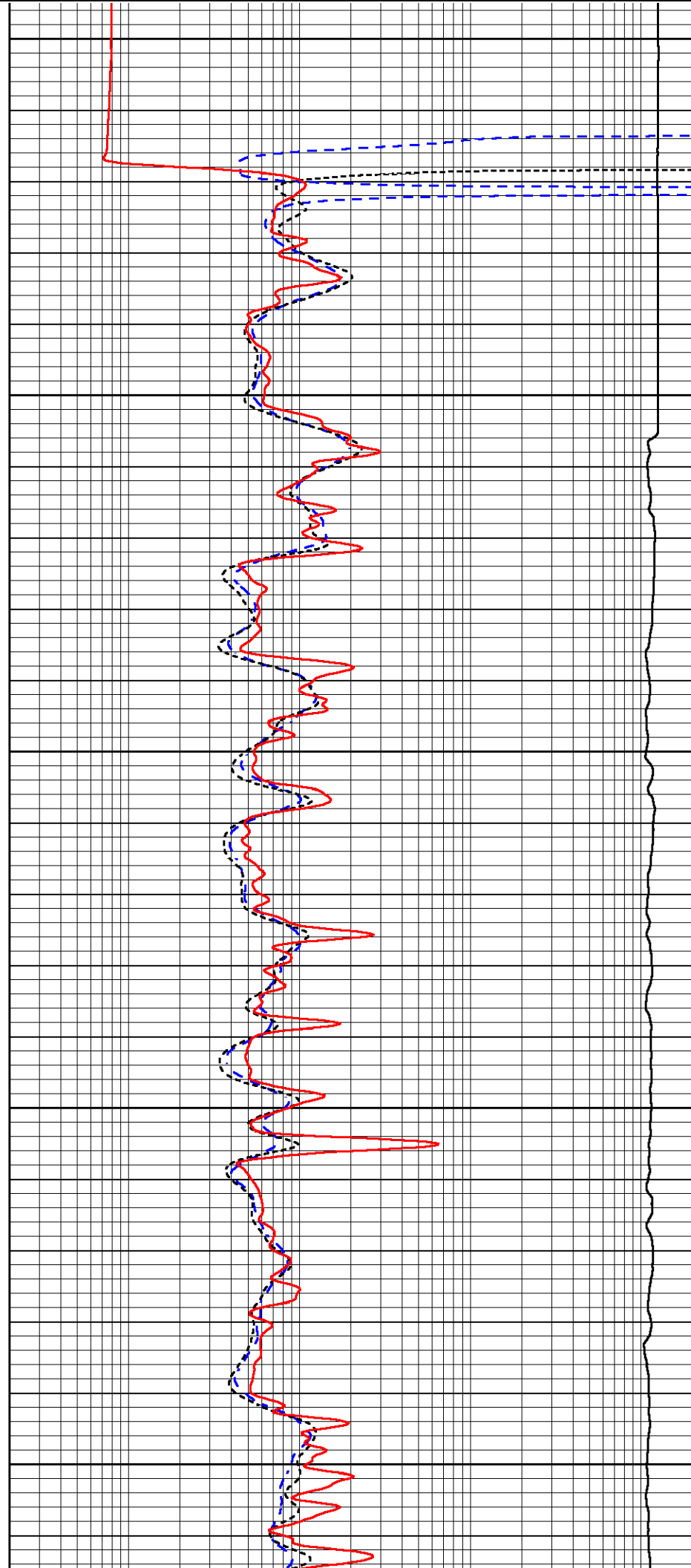
200

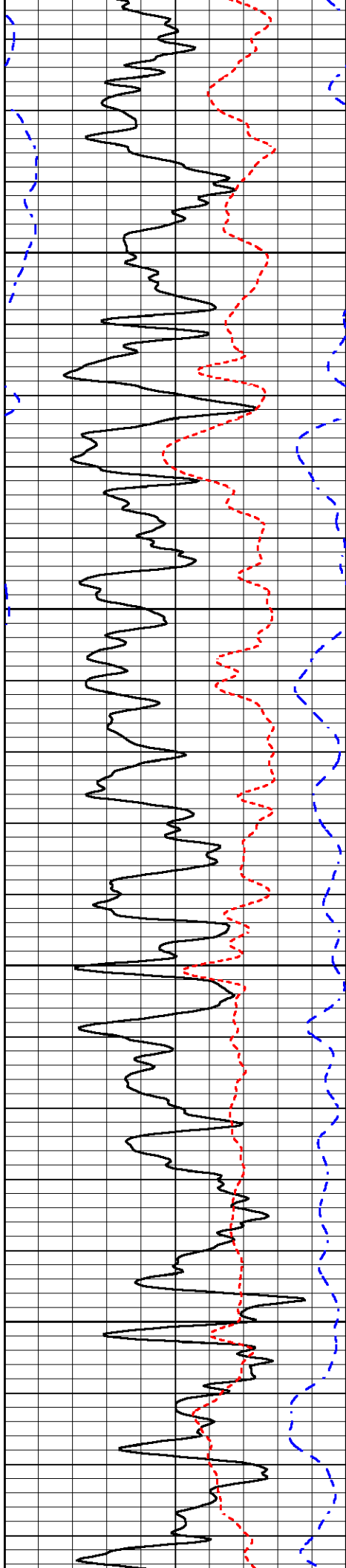
250

300

350

400



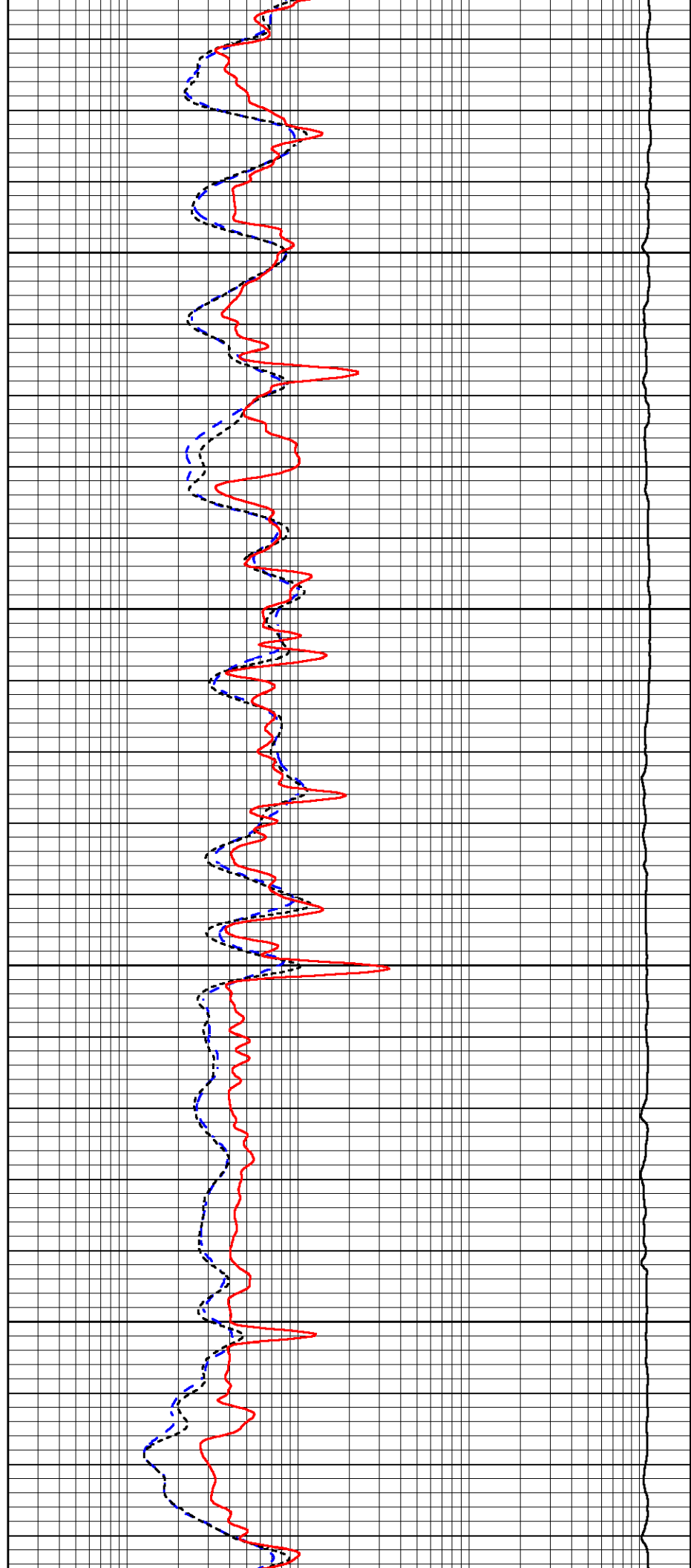


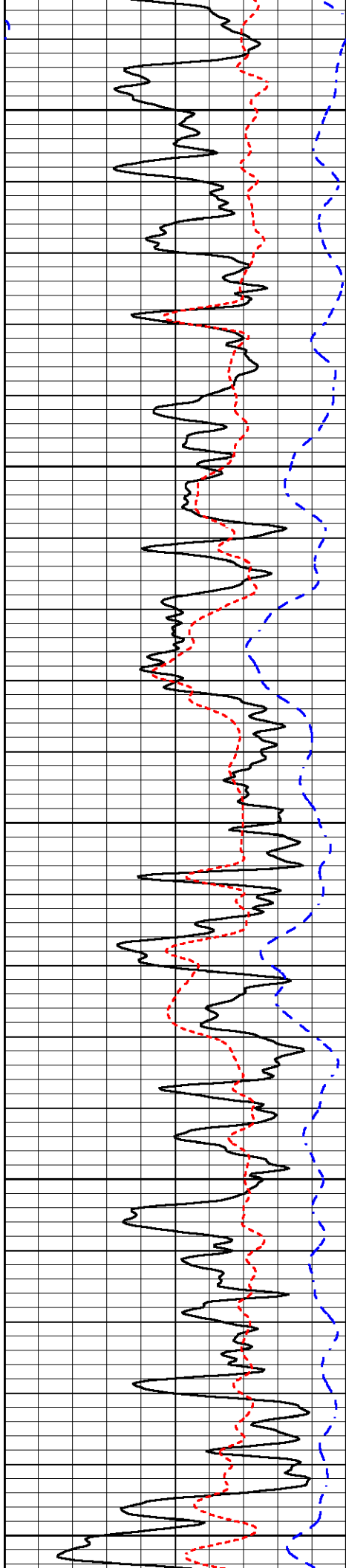
450

500

550

600





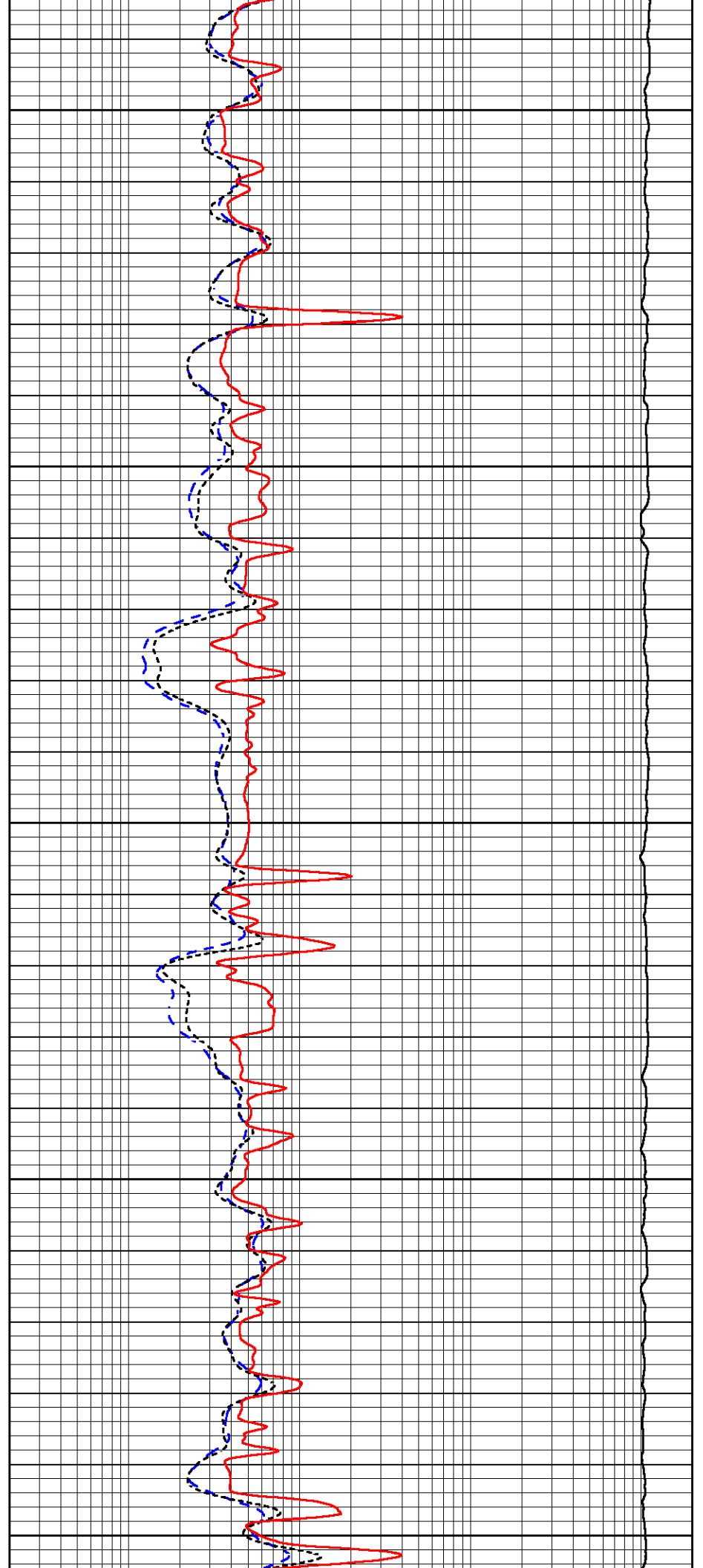
650

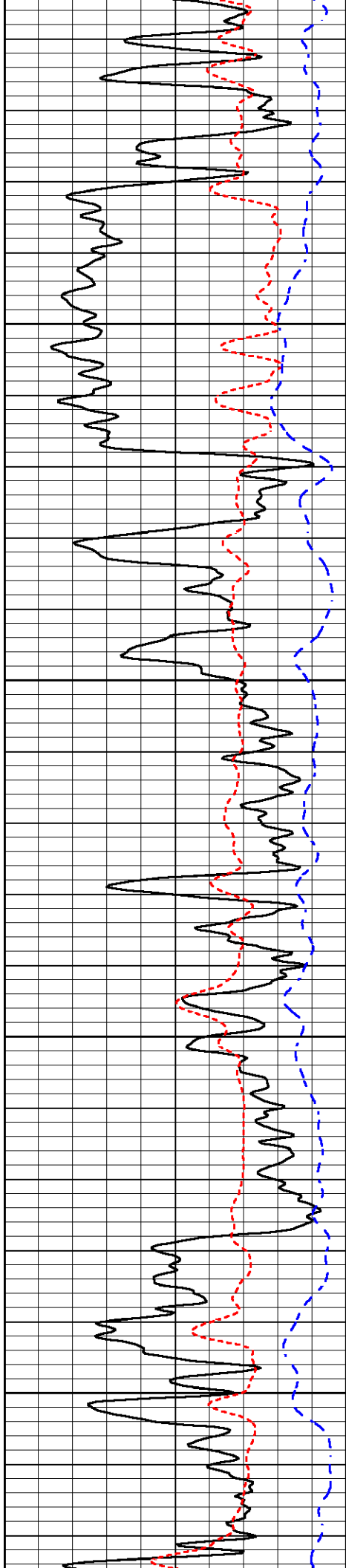
700

750

800

850



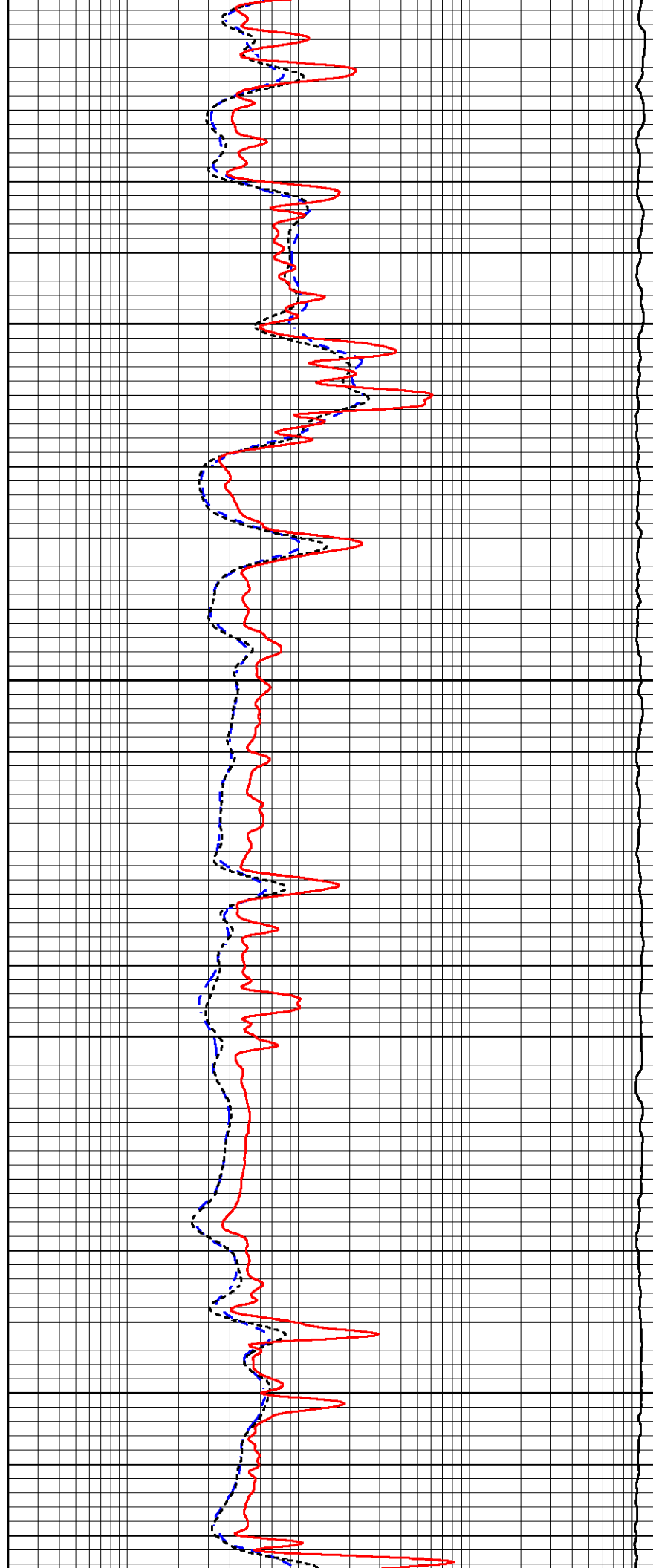


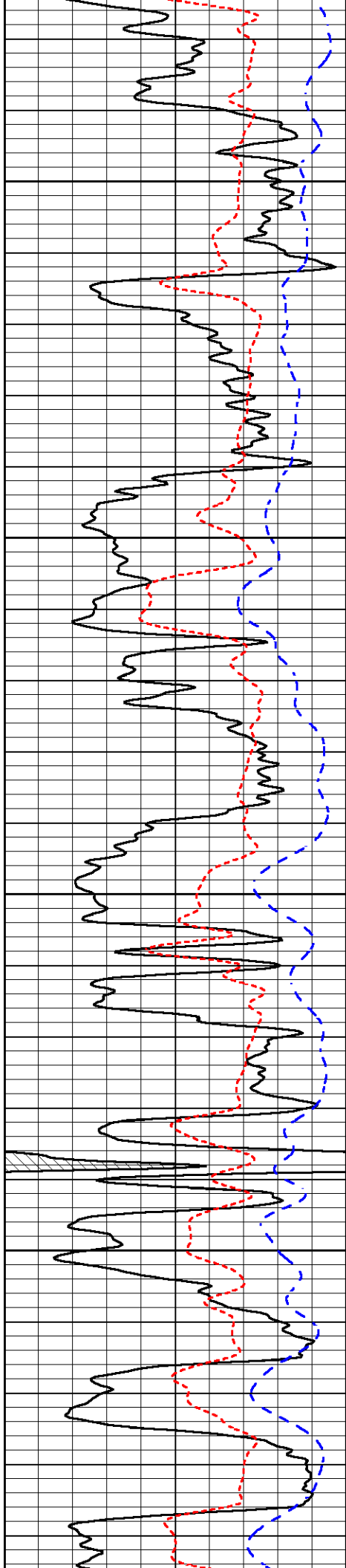
900

950

1000

1050



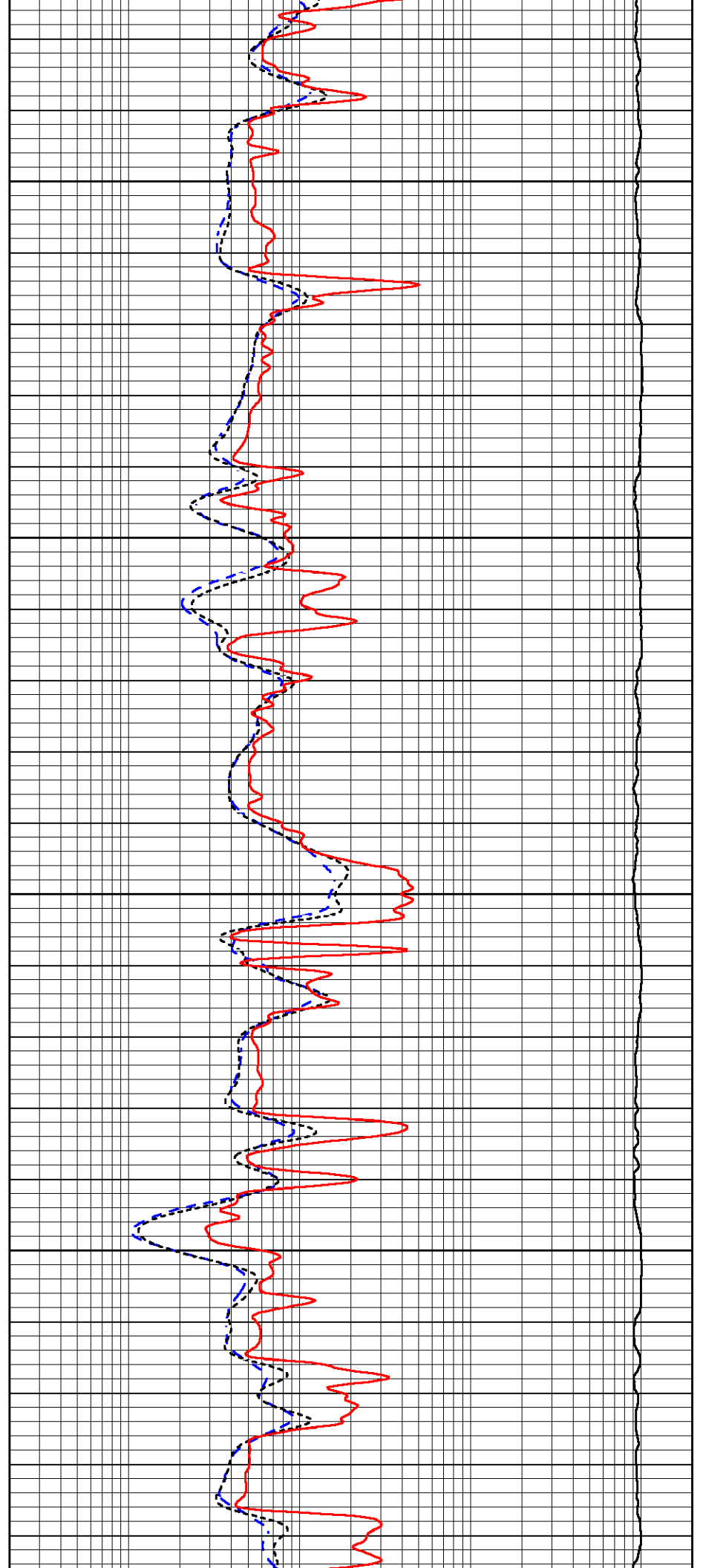


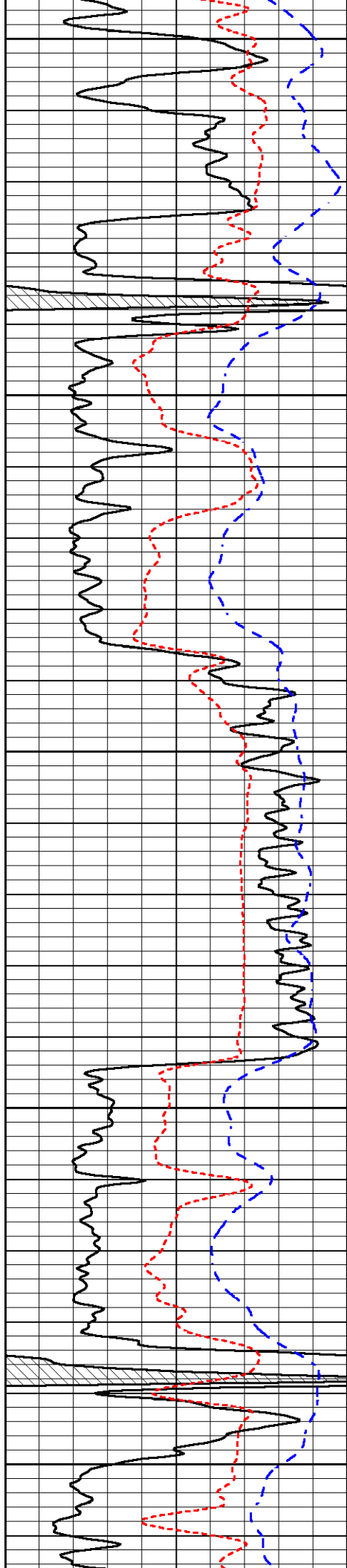
1100

1150

1200

1250





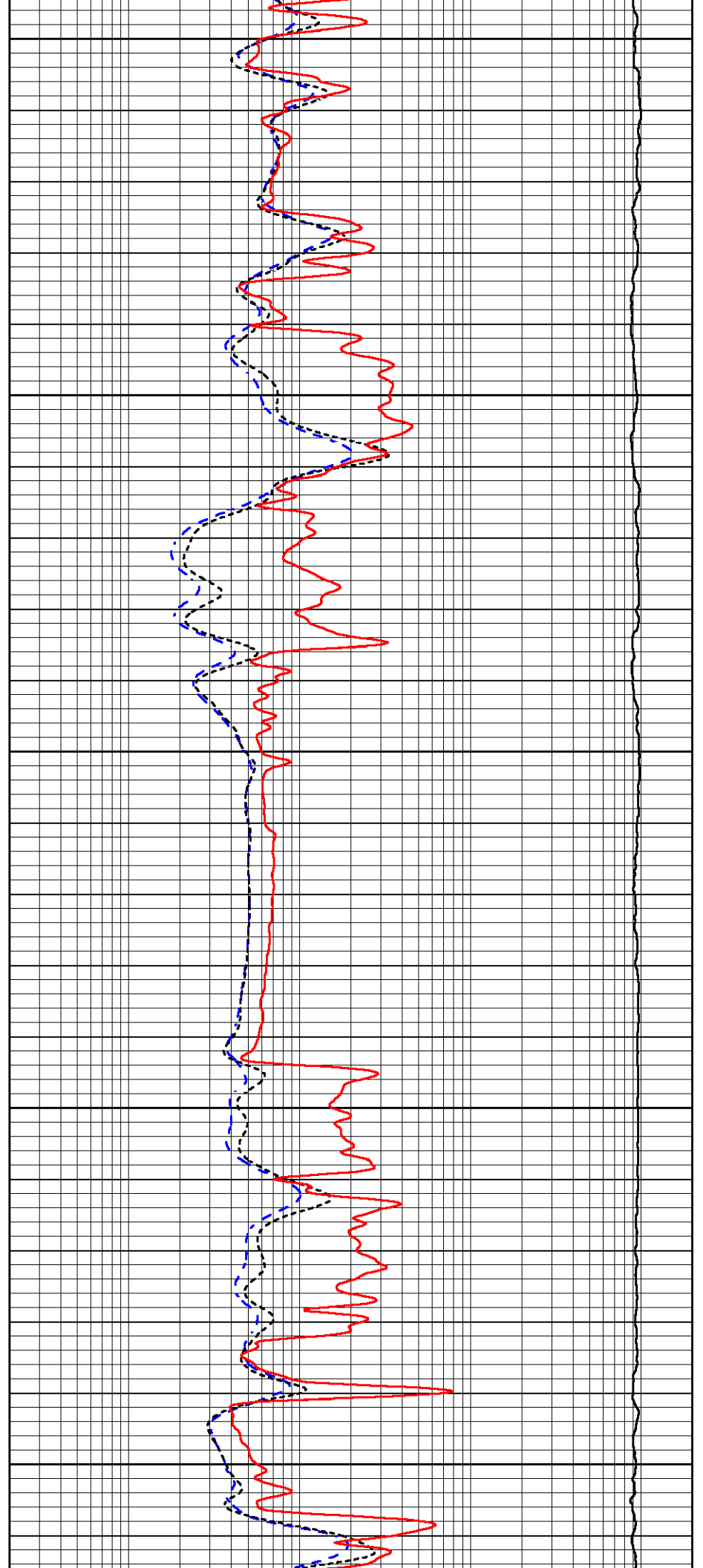
1300

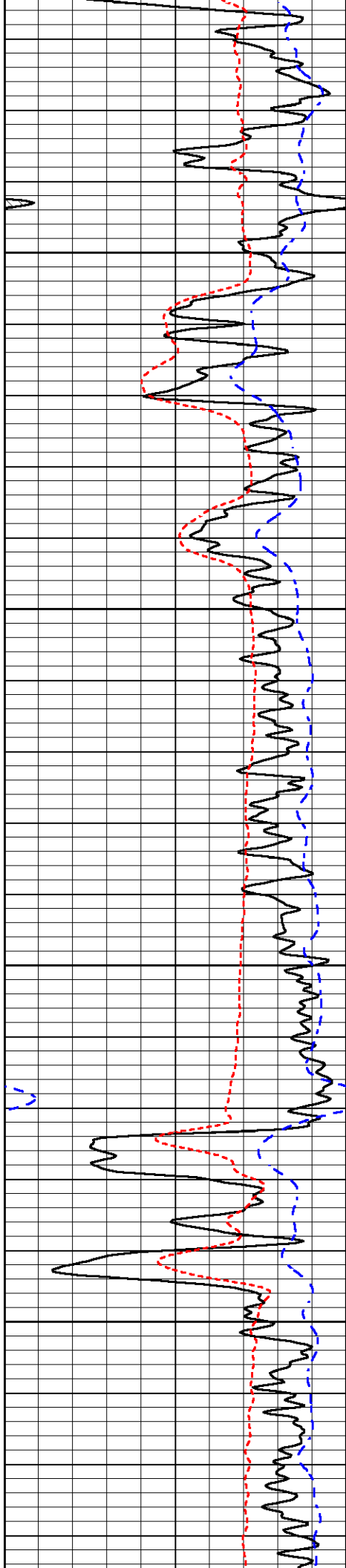
1350

1400

1450

1500



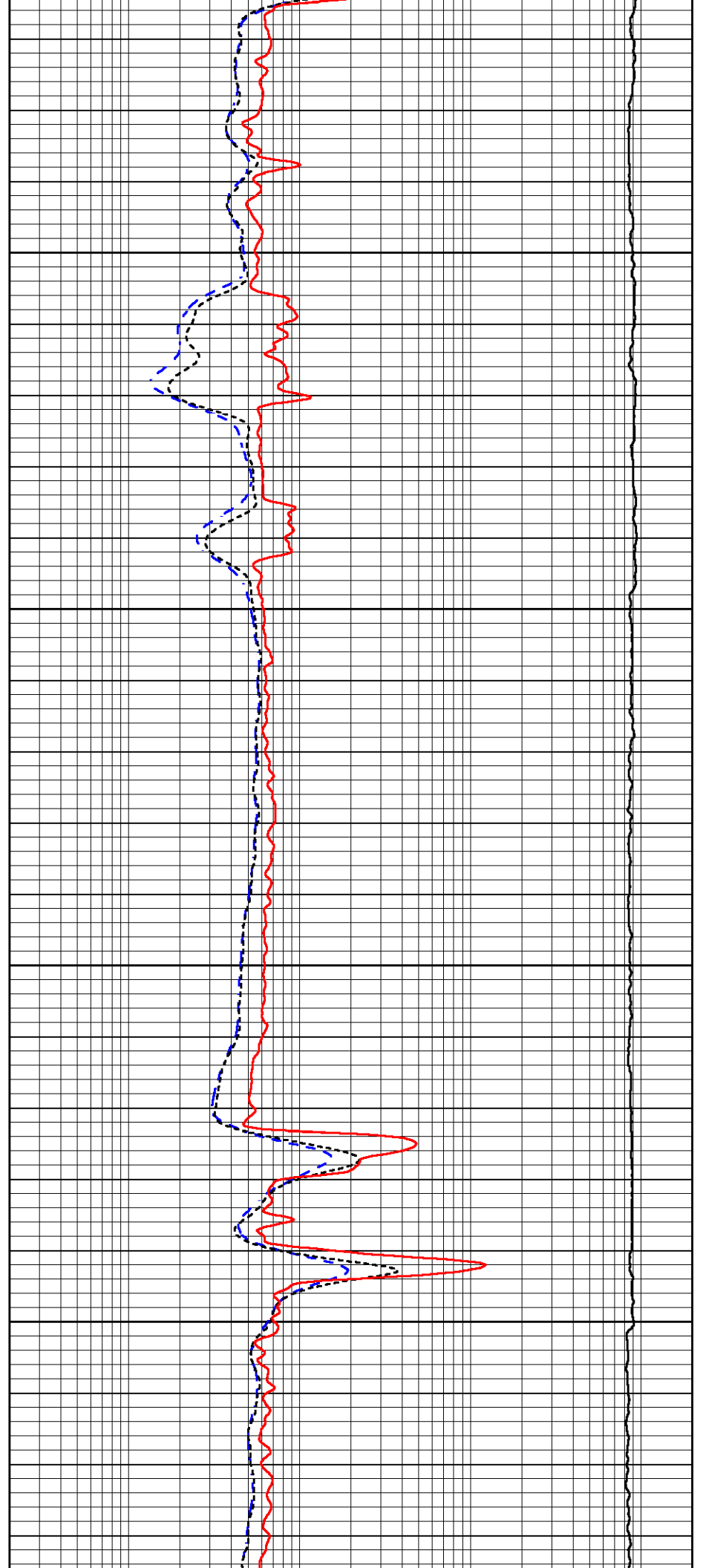


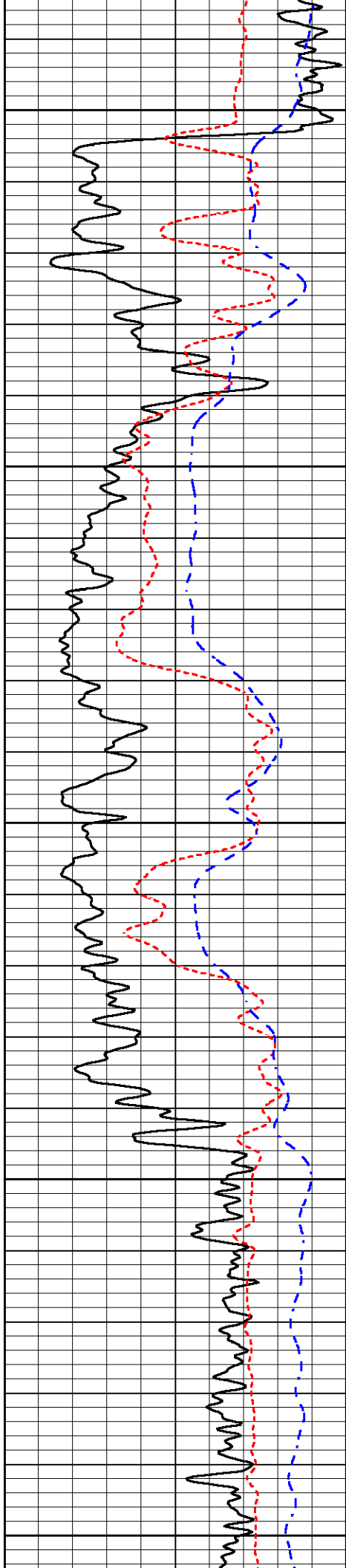
1550

1600

1650

1700





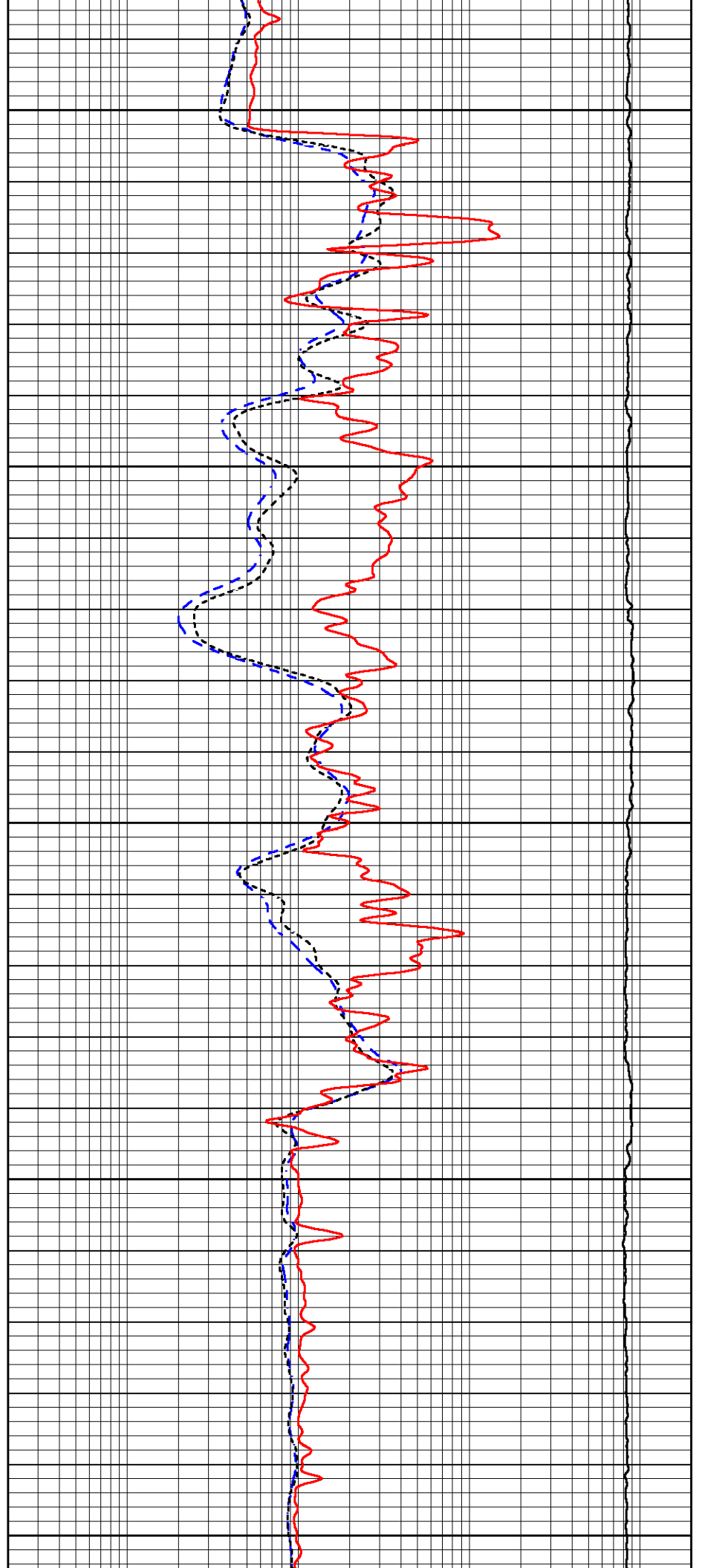
1750

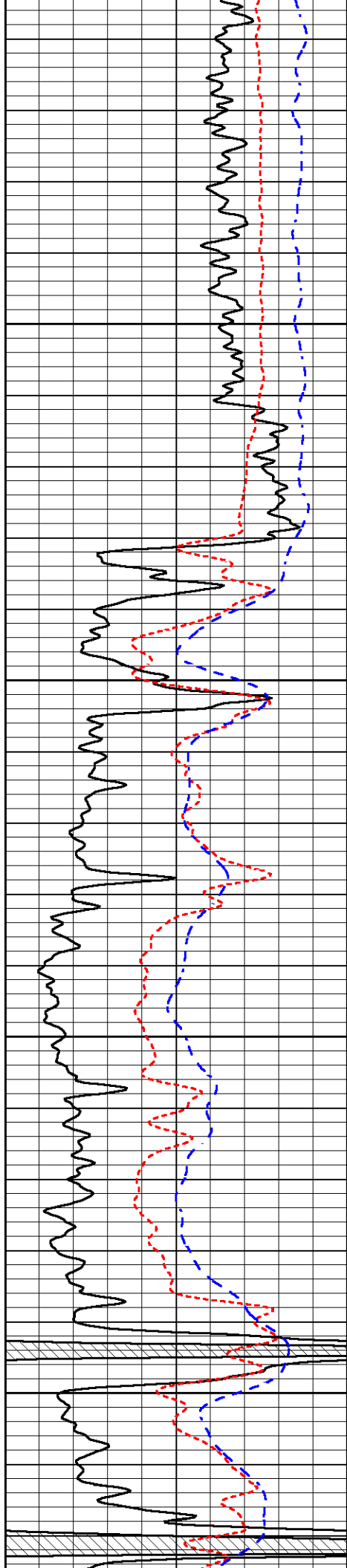
1800

1850

1900

1950



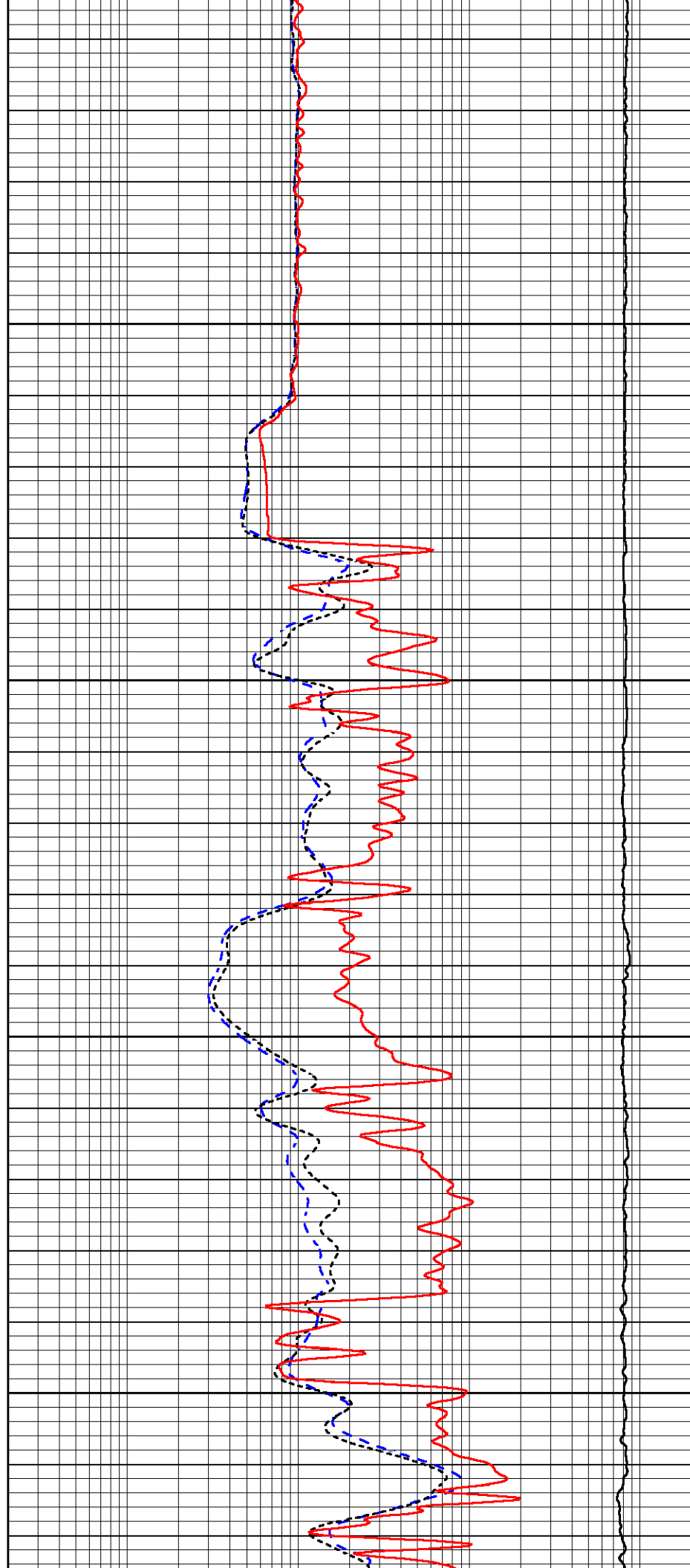


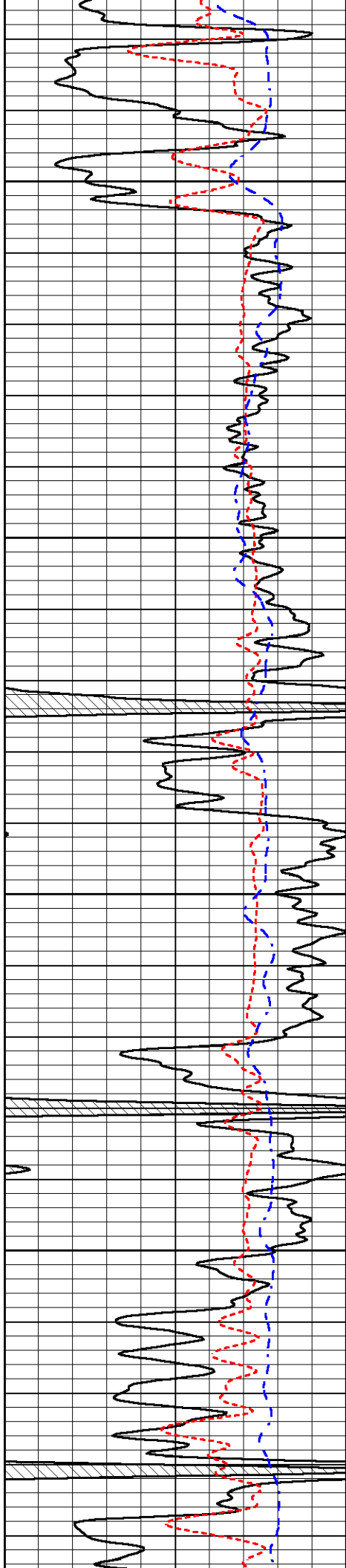
2000

2050

2100

2150



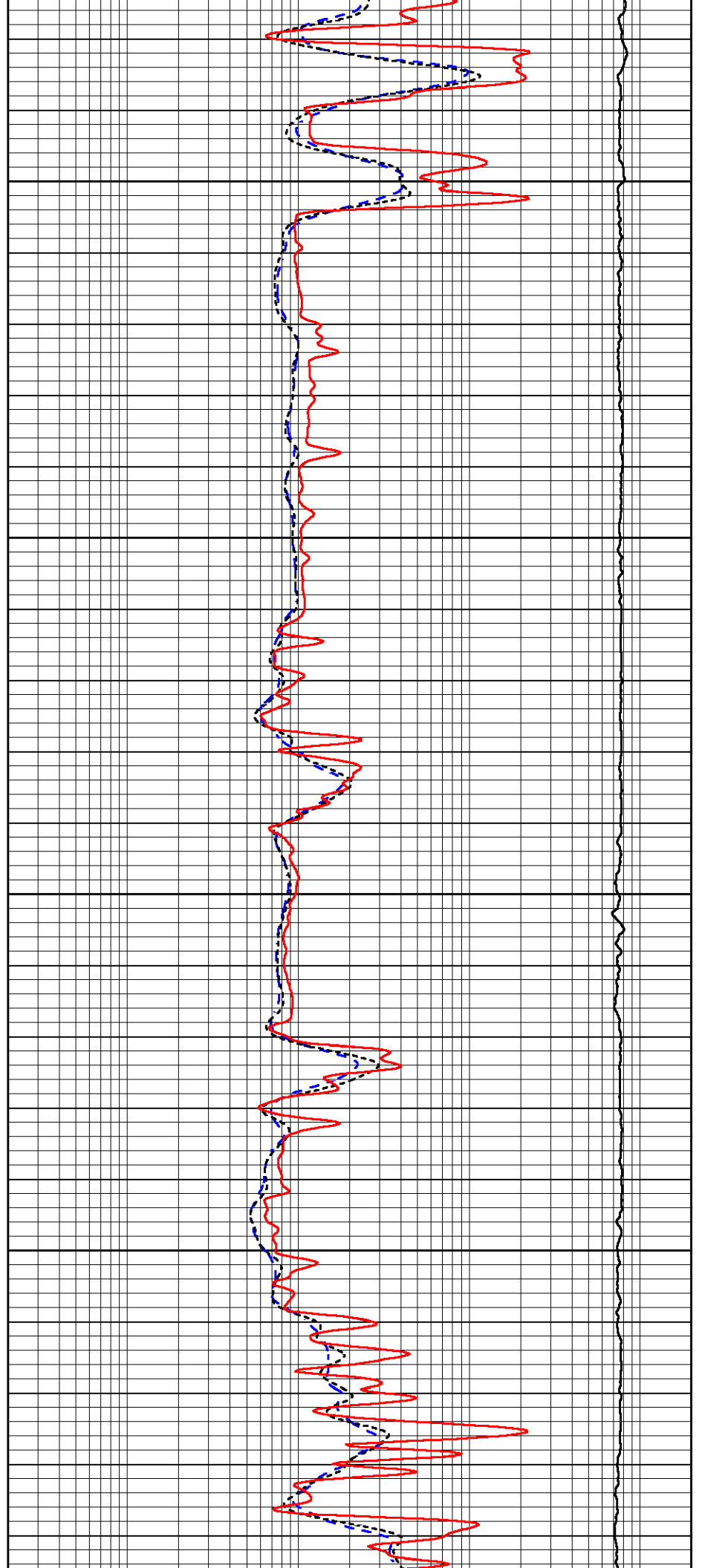


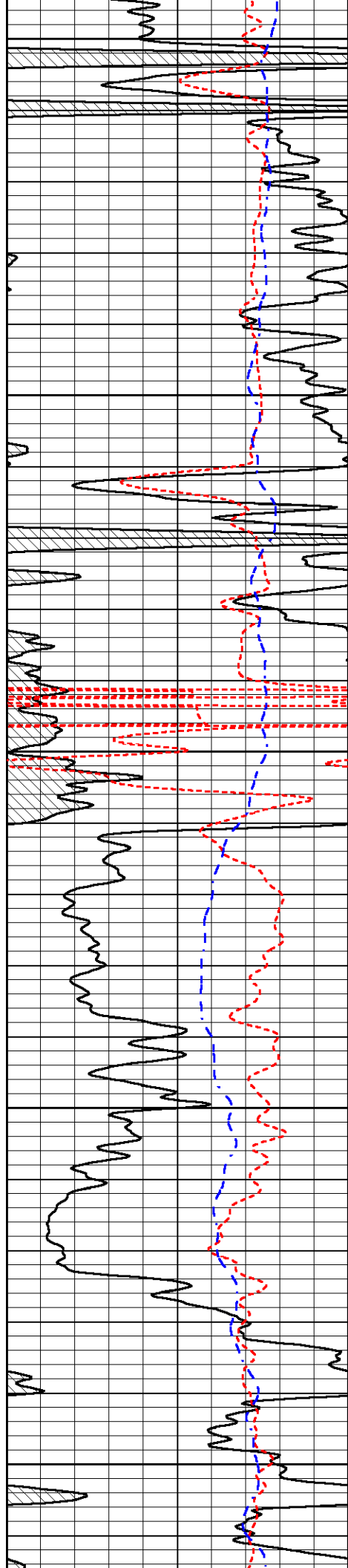
2200

2250

2300

2350





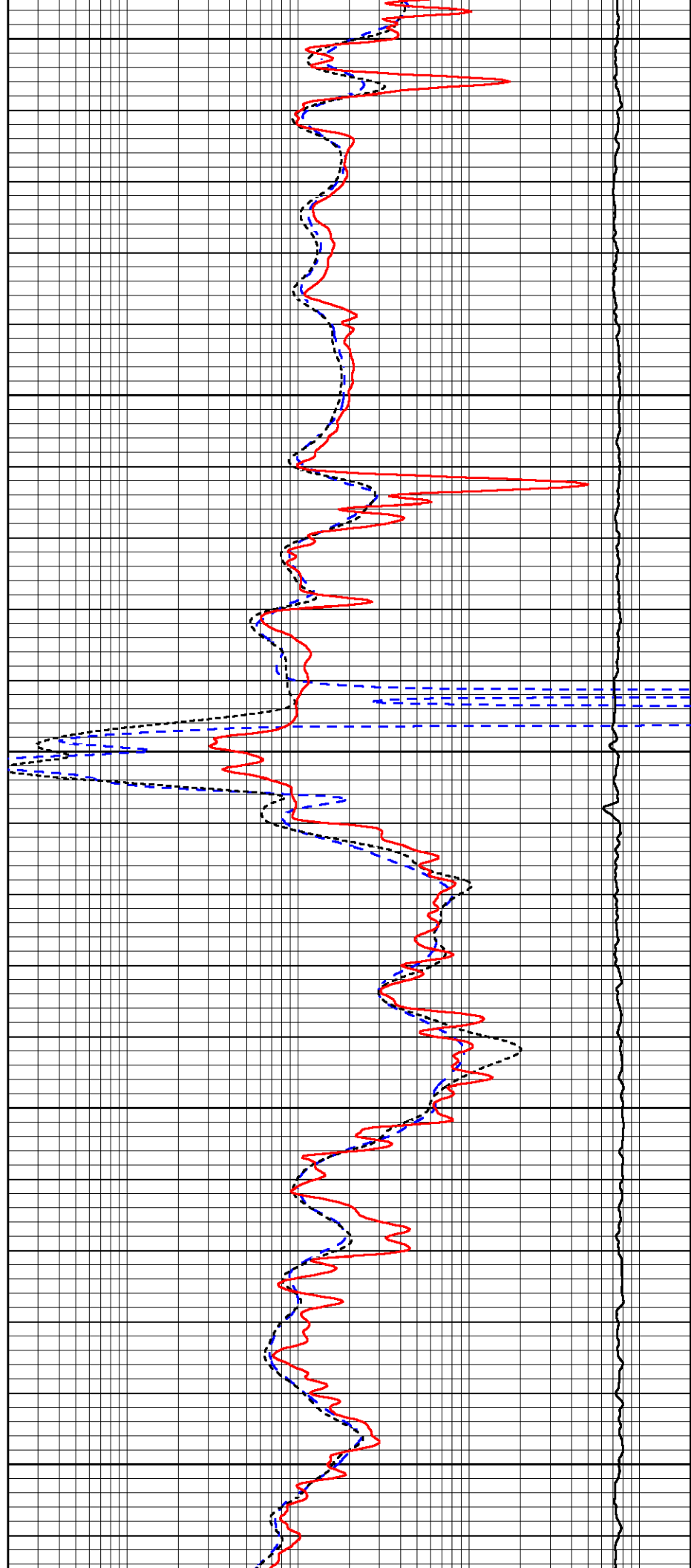
2400

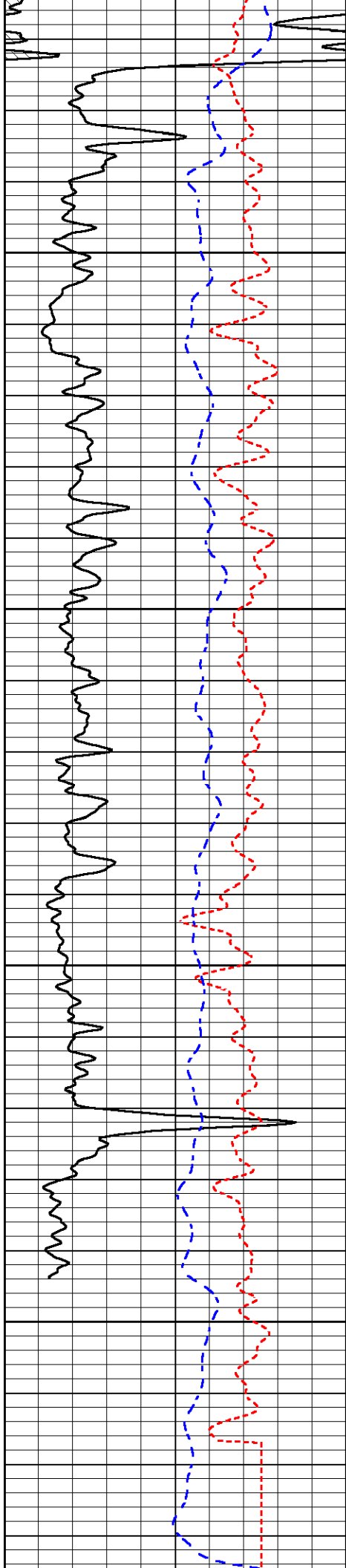
2450

2500

2550

2600



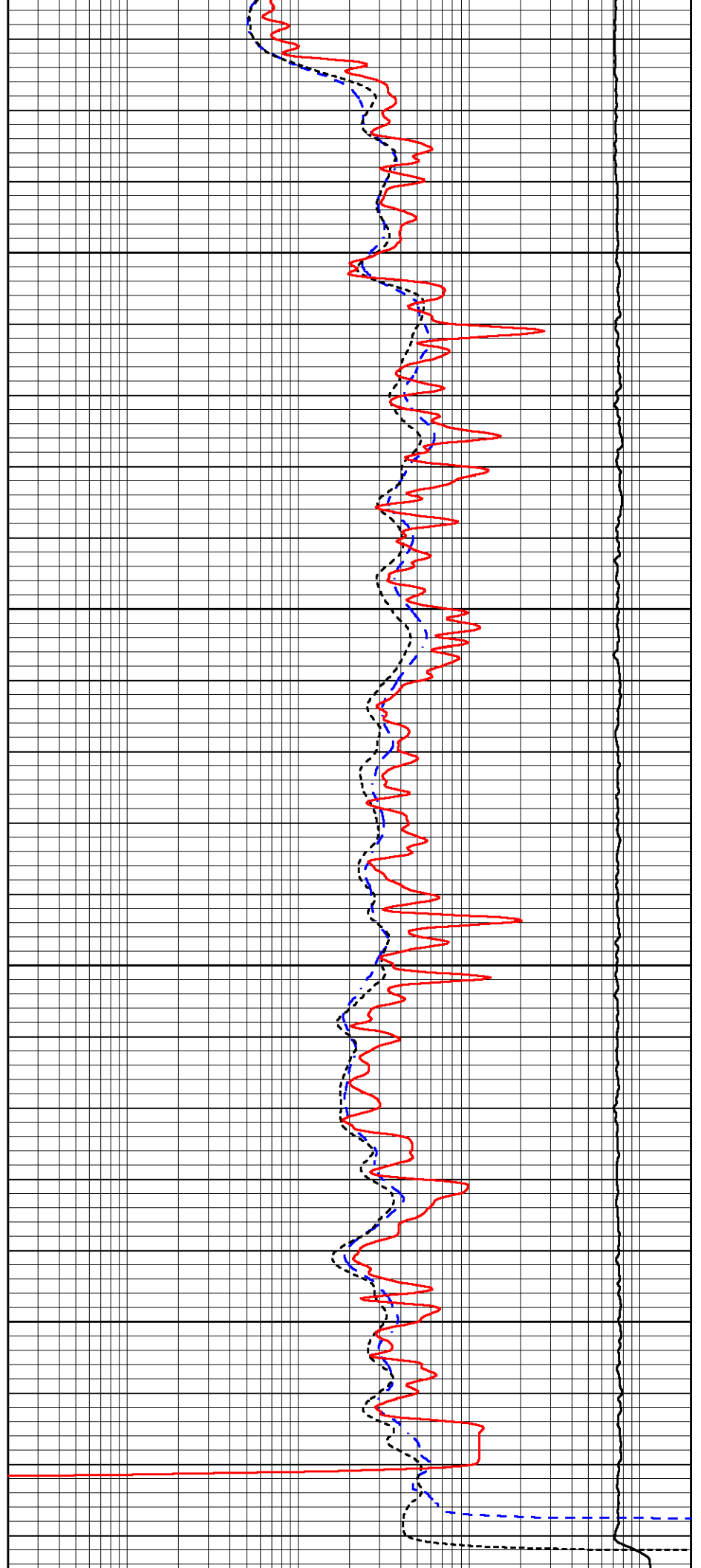


2650

2700

2750

2800



0	Gamma Ray (GAPI)	150
50	RXORT	250
-200	SP (mV)	0

0.2	Deep Resistivity (Ohm-m)	2000
0.2	Medium Resistivity (Ohm-m)	2000
0.2	RLL3 (Ohm-m)	2000
10000	Line Tension (lb)	0



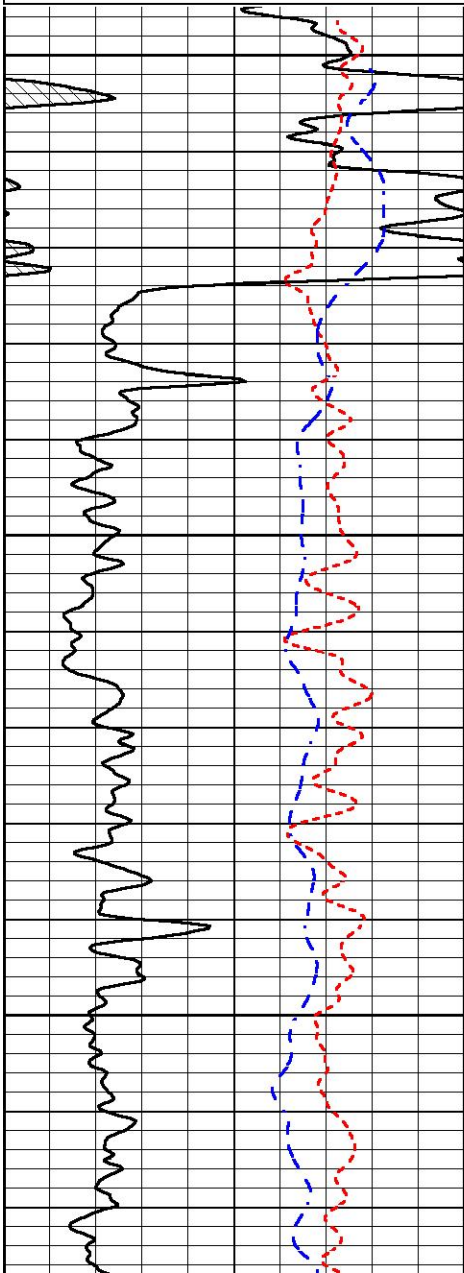
REPEAT SECTION

REPEAT PASS

Database File white_ellis_dunkle_7.db
 Dataset Pathname stackml/pass2.1
 Presentation Format _dil
 Dataset Creation Fri Jul 12 18:02:51 2024
 Charted by Depth in Feet scaled 1:240

0	Gamma Ray (GAPI)	150
50	RXORT	250
-200	SP (mV)	0

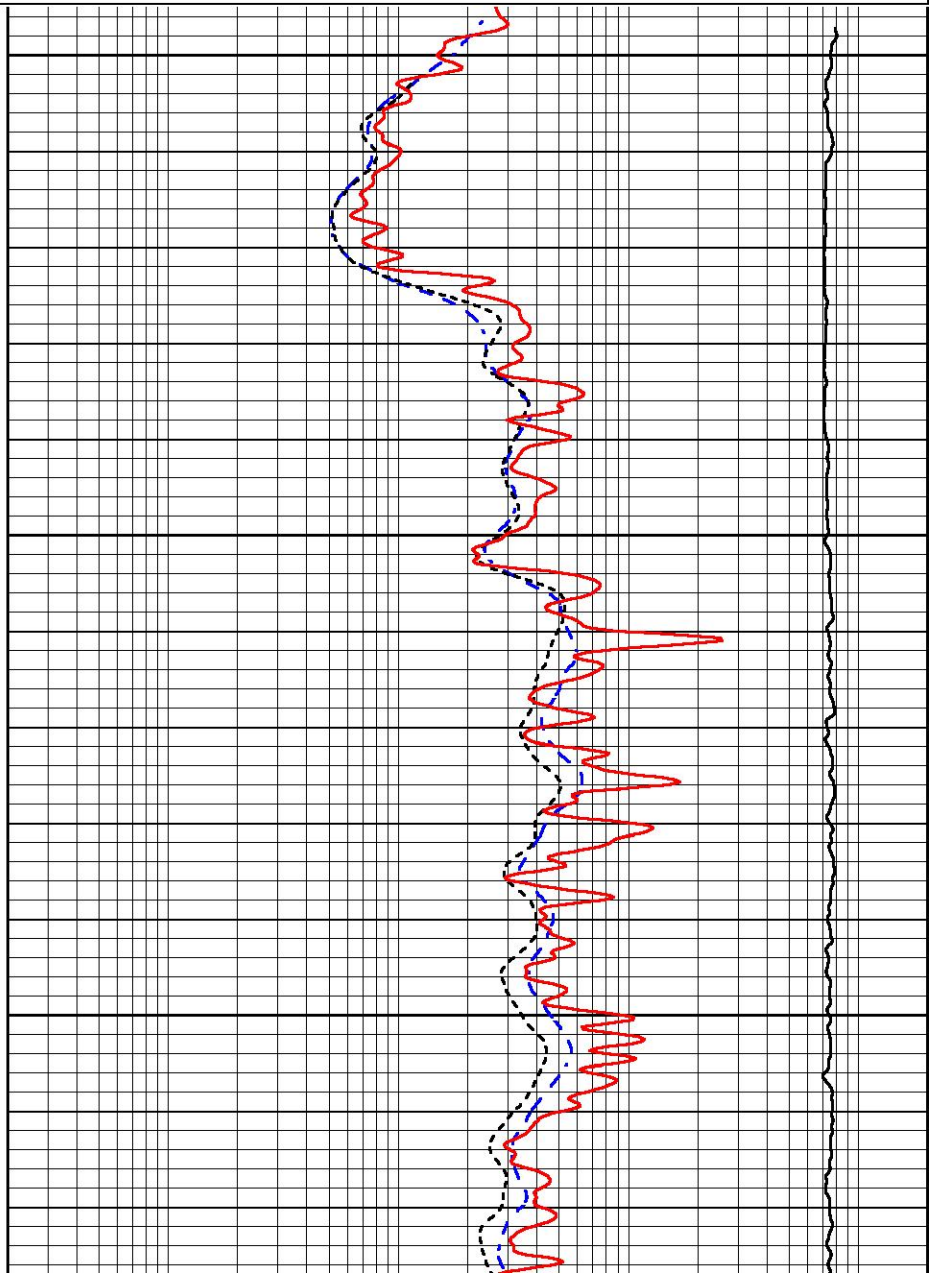
0.2	Deep Resistivity (Ohm-m)	2000
0.2	Medium Resistivity (Ohm-m)	2000
0.2	RLL3 (Ohm-m)	2000
10000	Line Tension (lb)	0

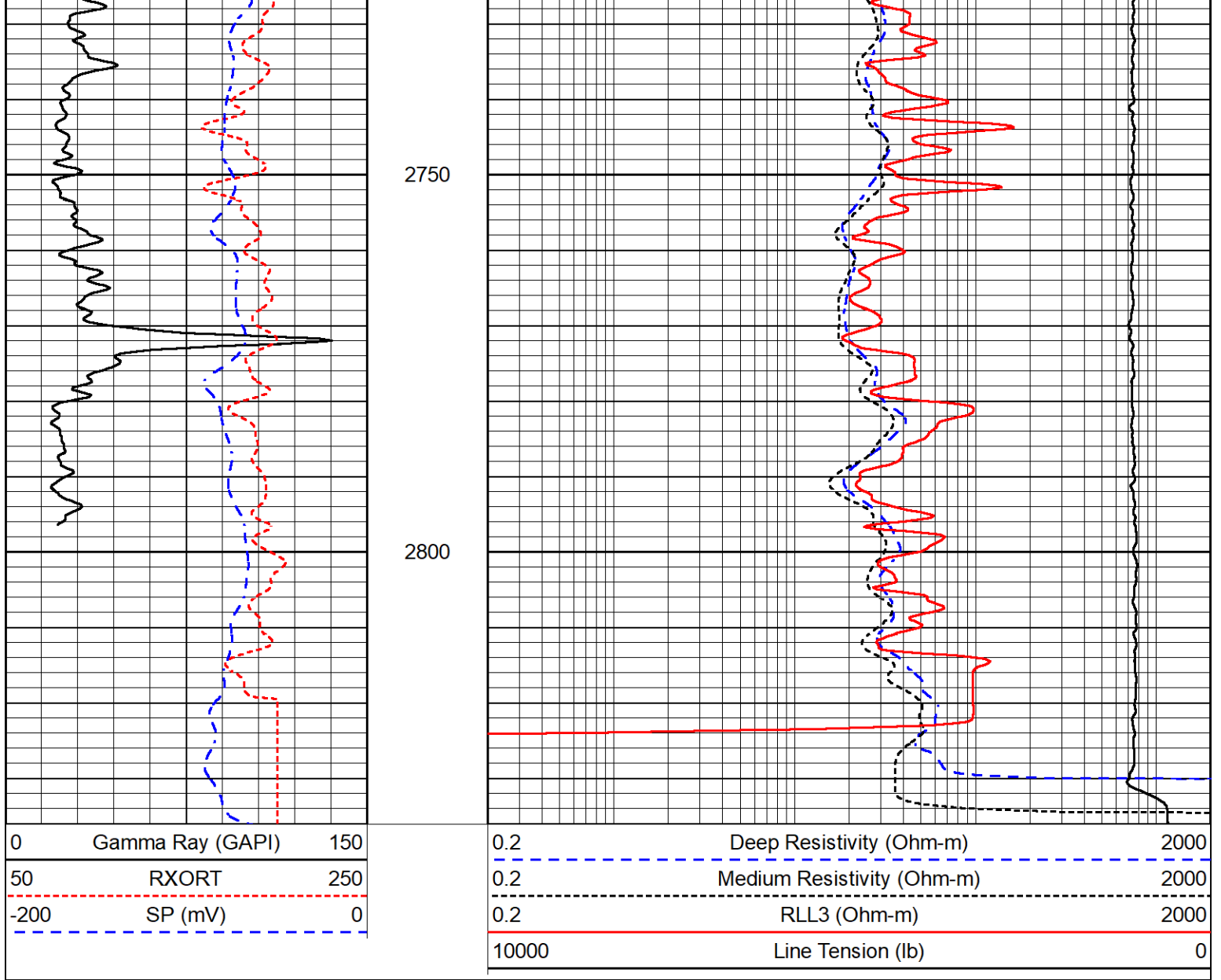


2600

2650

2700





Calibration Report

Database File white_ellis_dunkle_7.db
 Dataset Pathname stackml/pass3.1
 Dataset Creation Fri Jul 12 18:55:24 2024

Dual Induction Calibration Report

Serial-Model: 506-M&W
 Surface Cal Performed: Sun Jun 30 20:32:27 2024

Loop:	Readings		References			Results	
	Air	Loop	Air	Loop		m	b
Deep	84.211	428.152	0.000	255.800	mmho/m	0.465	-32.000
Medium	141.000	670.654	0.000	255.800	mmho/m	0.390	-10.000

Microlog Calibration Report

Serial-Model: 402-PSI STKBL ML
 Performed: Thu May 30 05:58:00 2024

Readings	References	Results
----------	------------	---------

	Zero	Cal	Zero	Cal		m	b
Normal	0.0037	0.0043	0.0000	10.0000	Ohm-m	12000.0000	-0.5000
Inverse	0.1208	0.0013	0.0000	10.0000	Ohm-m	18500.0000	-0.7000
Caliper	1.0046	1.1419	5.5000	20.0000	in	50.0000	-44.6250

LITHODENSITY Calibration Report

Serial Number: 703-03
Tool Model: STEP LITHO Short
Performed: Fri May 31 13:59:15 2024

Source:

	Win1	Win2	Win3	Win4	Win5	Win6	Win7	Win8	
Background:									
SS:	56	59	223	276	25	75	46	1	cps
LS:	83	90	344	441	51	132	90	3	cps
Aluminum:									
SS:	1063	1260	2893	2631	48	80	48	3	cps
LS:	1179	2084	3854	1823	62	133	86	5	cps
Magnesium:									
SS:	1756	2035	4740	3894	55	79	49	4	cps
LS:	4981	8390	15059	6054	115	127	85	14	cps
Aluminum+Iron:									
SS:	676	887	2426	2310	45	79	52	2	cps
LS:	700	1495	3280	1630	60	131	90	5	cps

	Density Actual	Calibrated	PE Actual	Calibrated	Quality
Background:					
SS:					0.236
LS:					0.189
Aluminum:					
SS:	2.6000	2.6000	g/cc		0.249
LS:	2.6000	2.6000	g/cc		0.216
Magnesium:					
SS:	1.6800	1.6800	g/cc	2.5700	2.5700
LS:	1.6800	1.6800	g/cc	2.5700	2.5700
Aluminum+Iron:					
SS:				6.1800	0.208
LS:				6.1800	0.188

Caliper: Reference: Reading:
Small Ring: 6.0 in 1.0
Large Ring: 14.0 in 1.0
Gain: 12.765
Offset: 1.800

Compensated Neutron Calibration Report

Serial Number: 210
Tool Model: M&W

CALIBRATION

Detector	Readings	Target	Normalization
Short Space	6240.00 cps	1000.00 cps	1.6025
Long Space	460.00 cps	1000.00 cps	1.9500

Gamma Ray Calibration Report

Serial Number: 105
Tool Model: M&W
Performed: Sat Oct 21 23:48:19 2023

Calibrator Value: 500.0 GAPI

Background Reading: 24.0 cps
Calibrator Reading: 637.0 cps

Sensitivity: 0.6000 GAPI/cps



MIDWEST WIRELINE

Company White & Ellis Drilling Inc
Well Dunkle 7
Field
County Butler
State Kansas