

MICRO LOG



Company KNIGHTON OIL COMPANY, INC.
 Well BGM #1-2
 Field SMITH NORTHEAST
 County COWLEY State KANSAS

Location: 990' FSL & 330' FWL
 NW - SW - SW
 SEC 2 TWP 31S RGE 3E
 Permanent Datum GROUND LEVEL Elevation 1230
 Log Measured From KELLY BUSHING 9' A.G.L.
 Drilling Measured From KELLY BUSHING
 Other Services CDL/CNL/PE DIL/SONIC
 Elevation K.B. 1239 D.F. 1237 G.L. 1230

Date	8/18/23		
Run Number	TWO		
Depth Driller	3487		
Depth Logger	3486		
Bottom Logged Interval	3470		
Top Log Interval	2000		
Casing Driller	13 3/8"@342'		
Casing Logger	342		
Bit Size	7 7/8"		
Type Fluid in Hole	CHEMICAL MUD	CHLORIDES 5,200 PPM	
Density / Viscosity	8.9/45		
pH / Fluid Loss	11.0/9.6		
Source of Sample	FLOWLINE		
Rm @ Meas. Temp	.900@97F		
Rmf @ Meas. Temp	.675@97F		
Rmc @ Meas. Temp	1.08@97F		
Source of Rmf / Rmc	MEASUREMENT		
Rm @ BHT	.786@111F		
Time Circulation Stopped	3.5 HOURS		
Time Logger on Bottom	7.45 P.M.		
Maximum Recorded Temperature	111F		
Equipment Number	922339		
Location	HAYS, KANSAS		
Recorded By	JEFF LUEBBERS		
Witnessed By	PHIL ASKEY		

<<< Fold Here >>>

All interpretations are opinions based on inferences from electrical or other measurements and we cannot and do not guarantee the accuracy or correctness of any interpretation, and we shall not, except in the case of gross or willful negligence on our part, be liable or responsible for any loss, costs, damages, or expenses incurred or sustained by anyone resulting from any interpretation made by any of our officers, agents or employees. These interpretations are also subject to our general terms and conditions set out in our current Price Schedule.

15-035-24787-0000 Comments

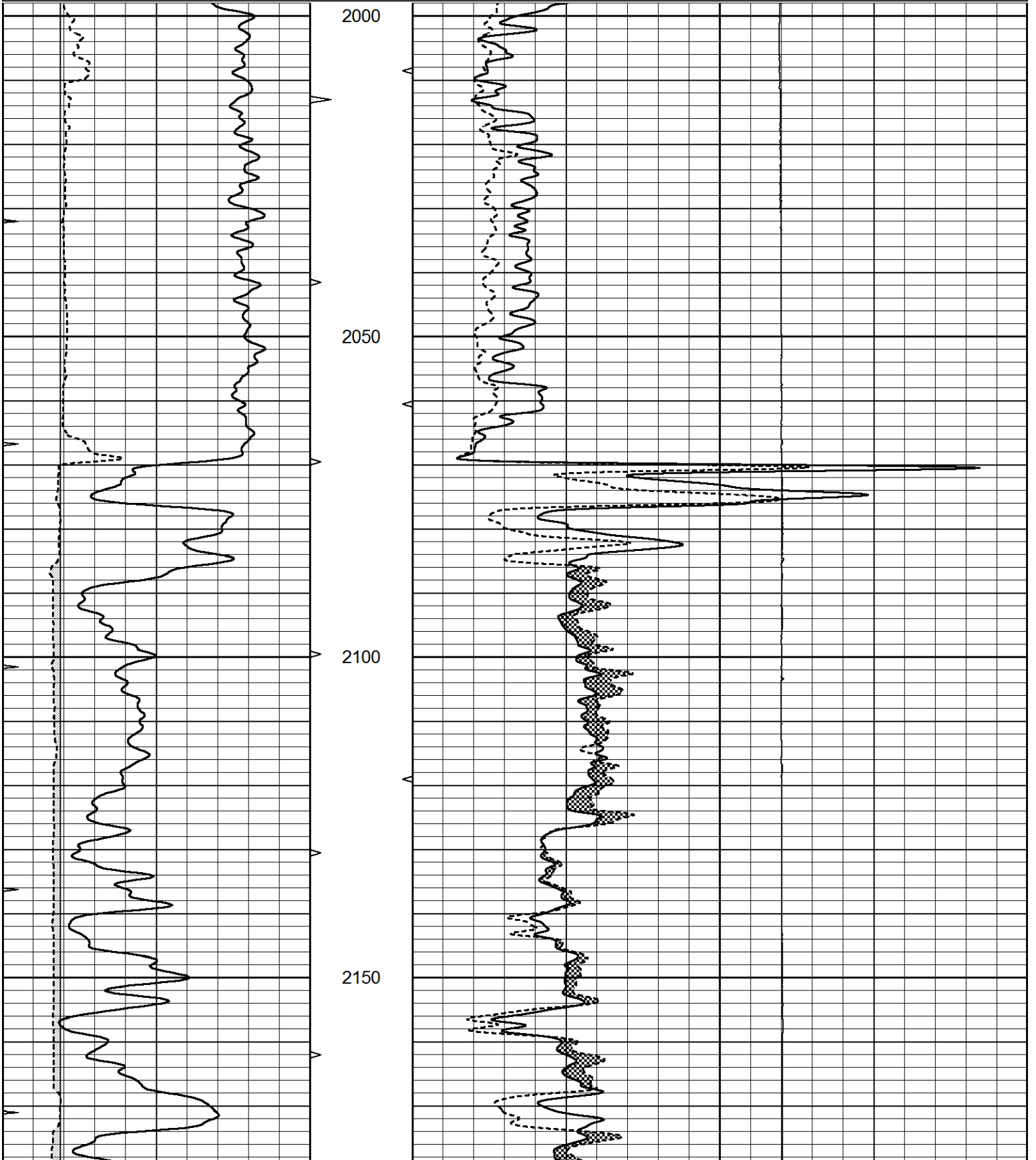
THANK YOU FOR USING ELI WIRELINE HAYS, KANSAS (785) 628-6395
 DIRECTIONS
 UDALL, KS., 2W. ON HWY 15 TO "41ST ST.", 3/4S., E. INTO

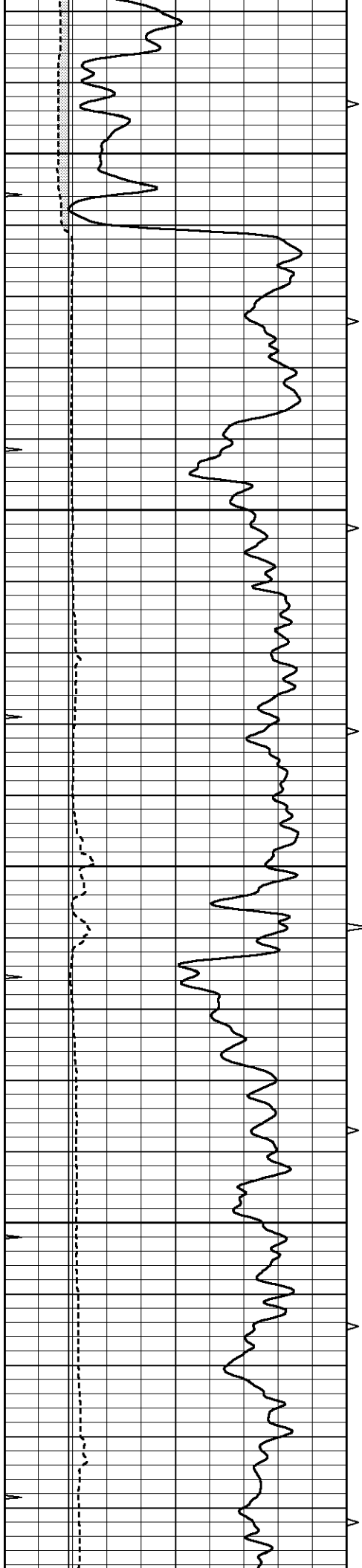


MAIN SECTION

Database File 7321pe.db
 Dataset Pathname pass5.3
 Presentation Format _micro
 Dataset Creation Fri Aug 18 21:00:37 2023
 Charted by Depth in Feet scaled 1:240

0	GAMMA RAY (GAPI)	150	ABHV	0	MEL1.5 (Ohm-m)	40
6	CALIPER (in)	16	10 (ft3)	0	MEL2.0 (Ohm-m)	40
0	MINMK	20	TBHV	0	LTEN (lb)	5000
			0 (ft3)	10		



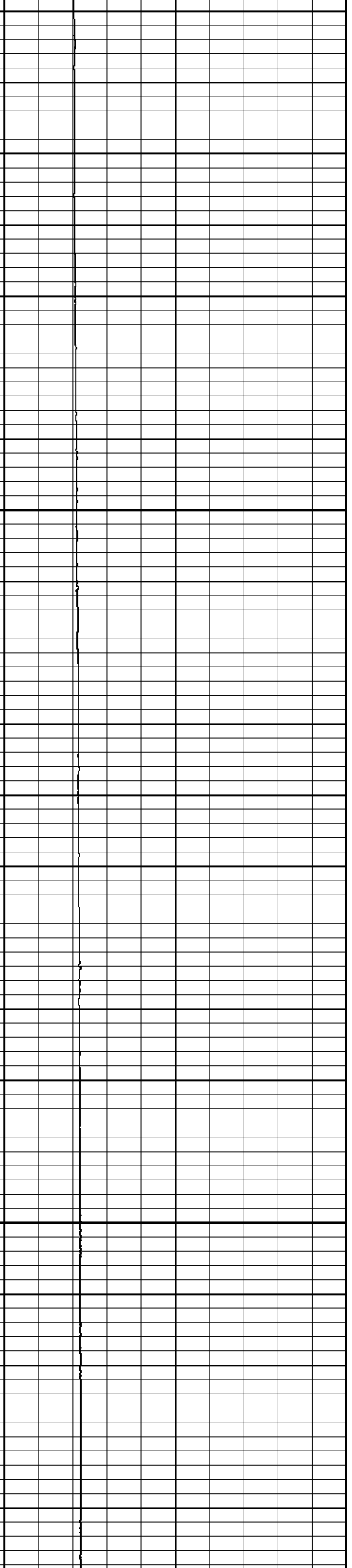
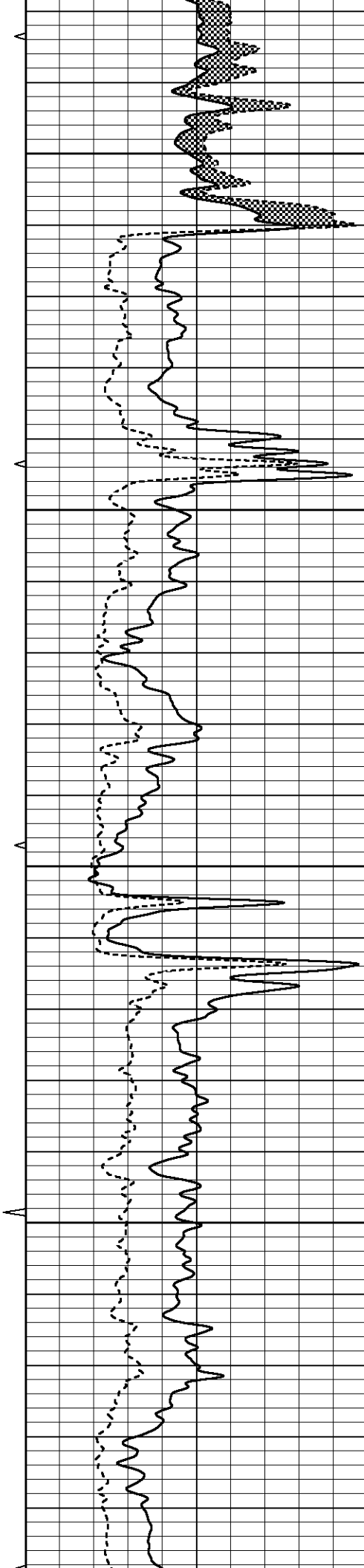


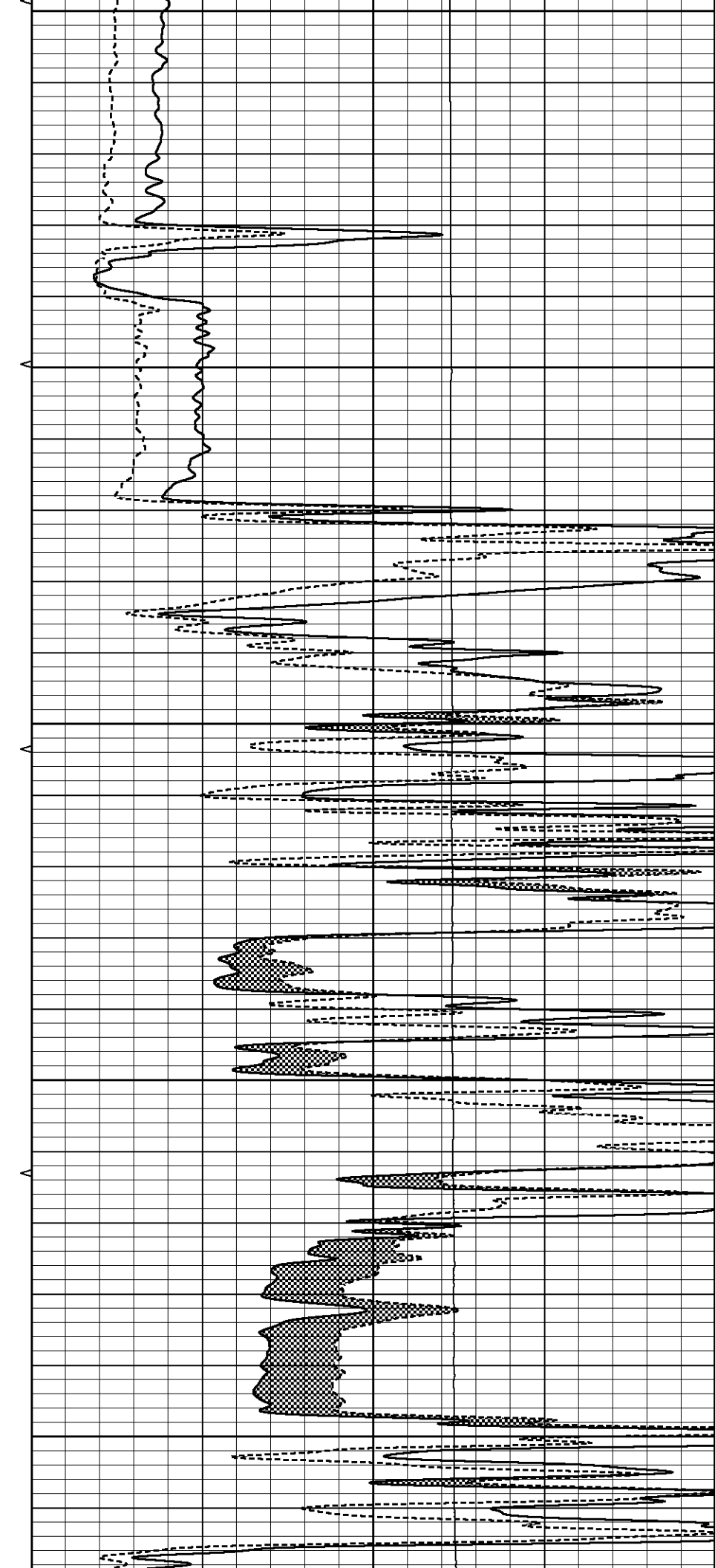
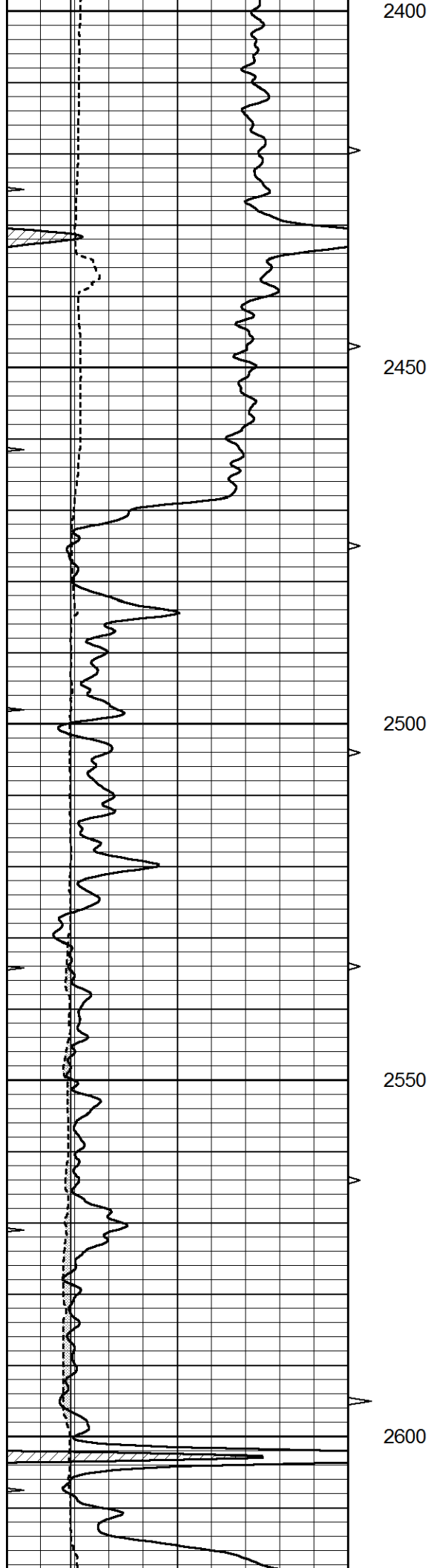
2200

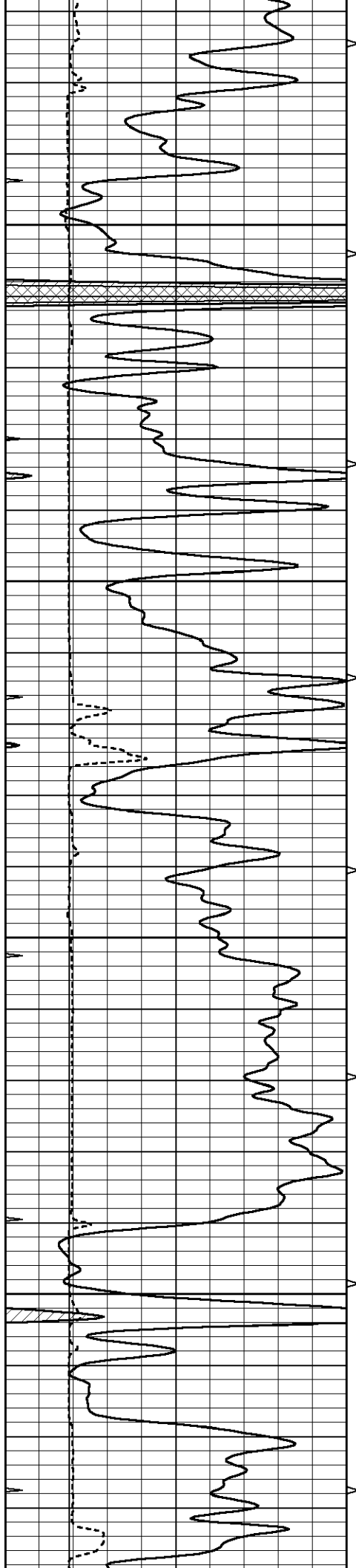
2250

2300

2350





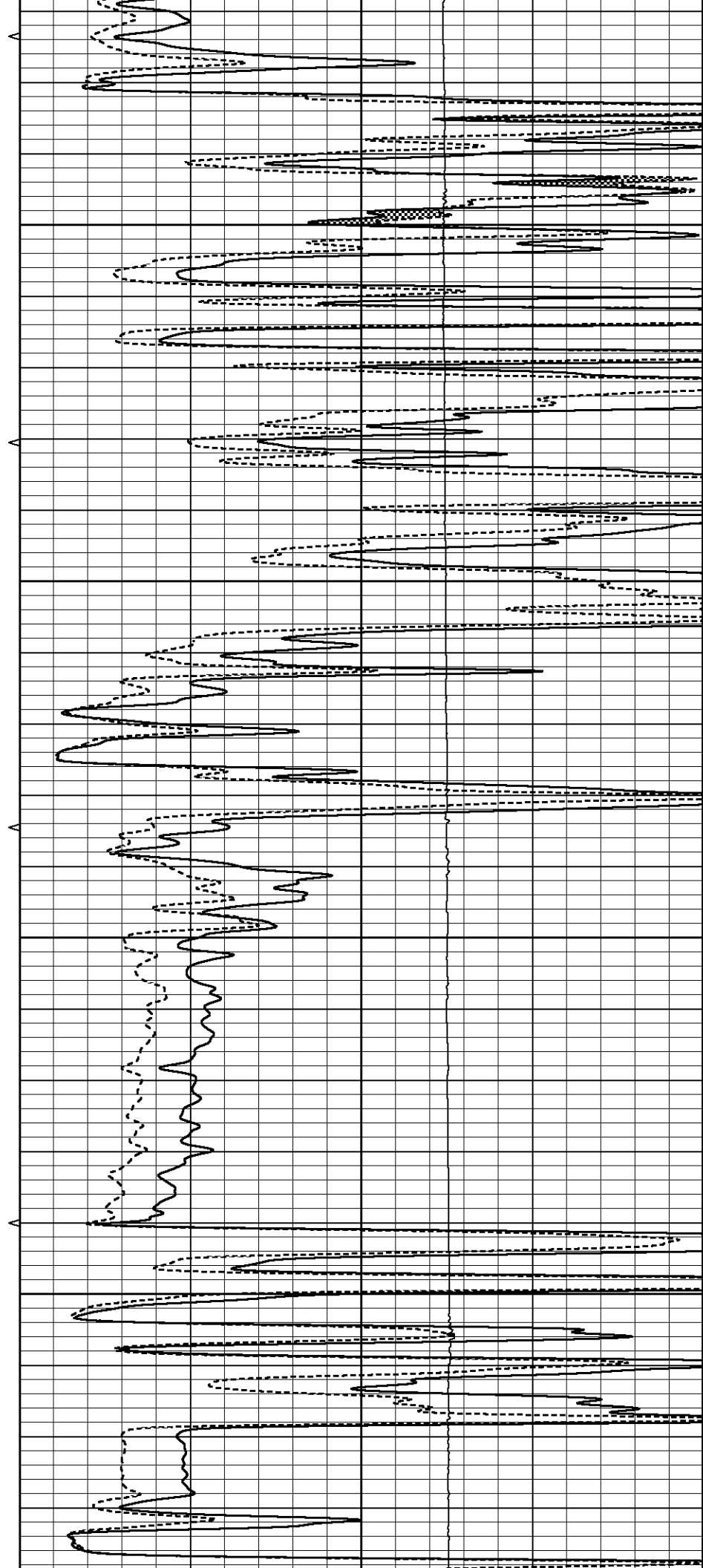


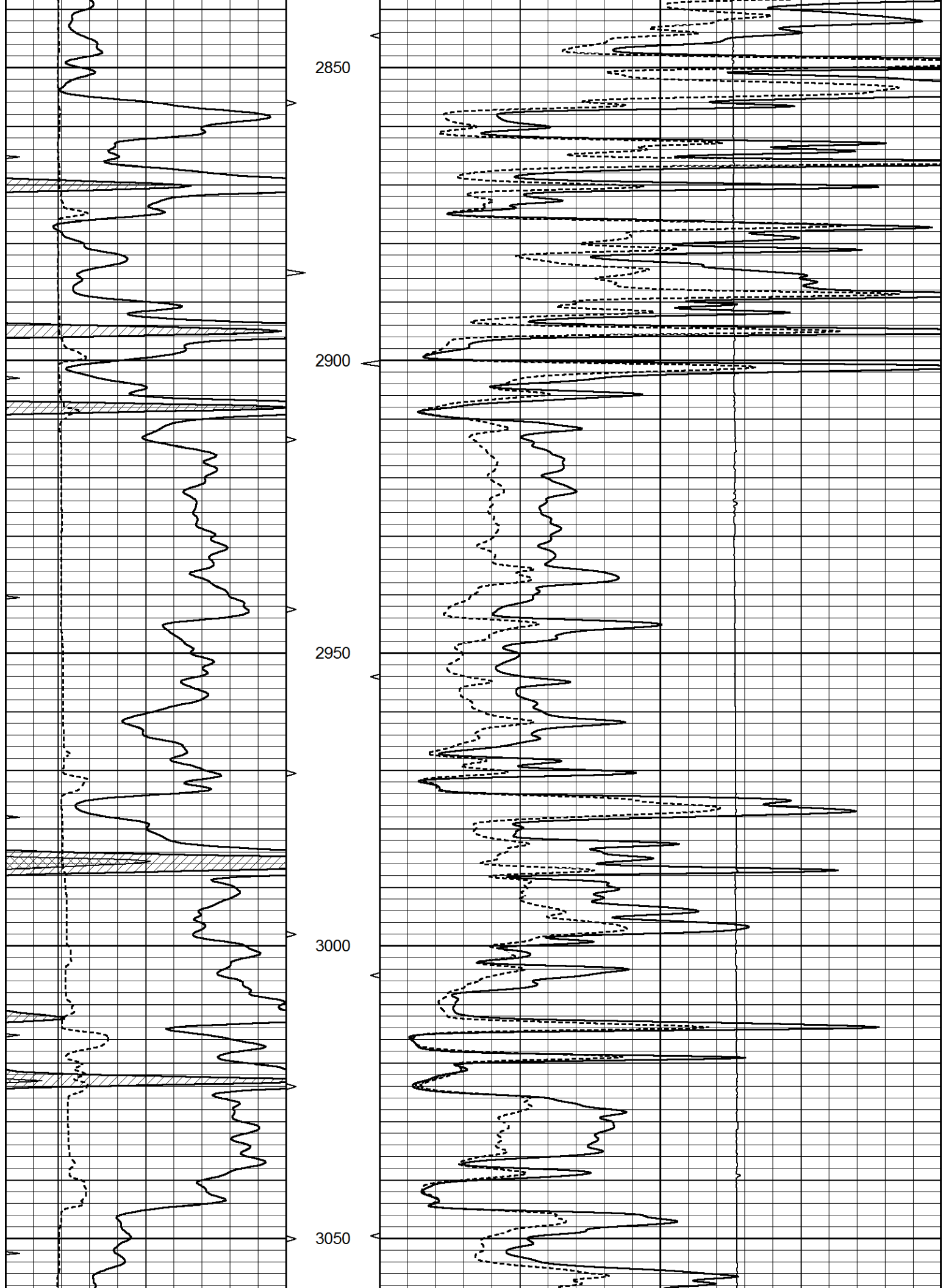
2650

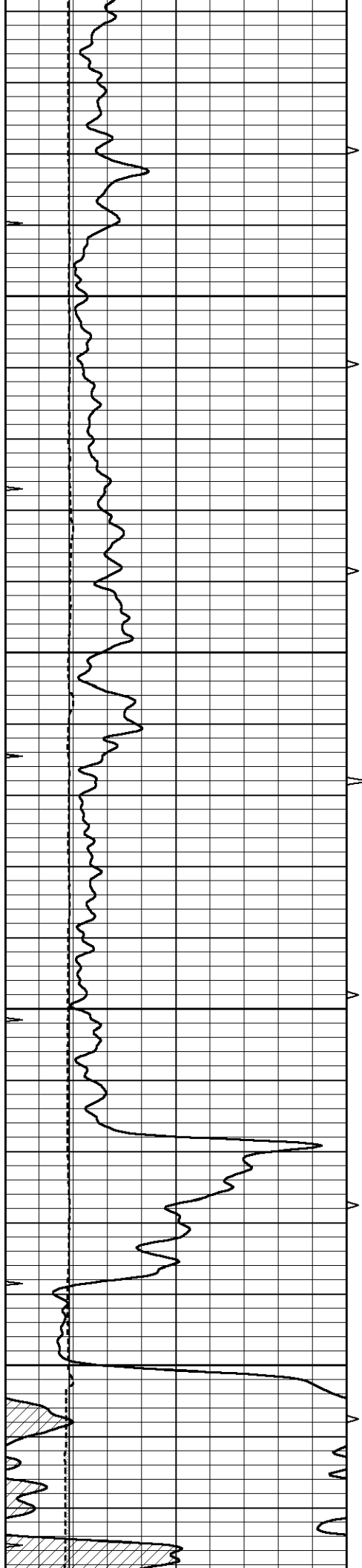
2700

2750

2800





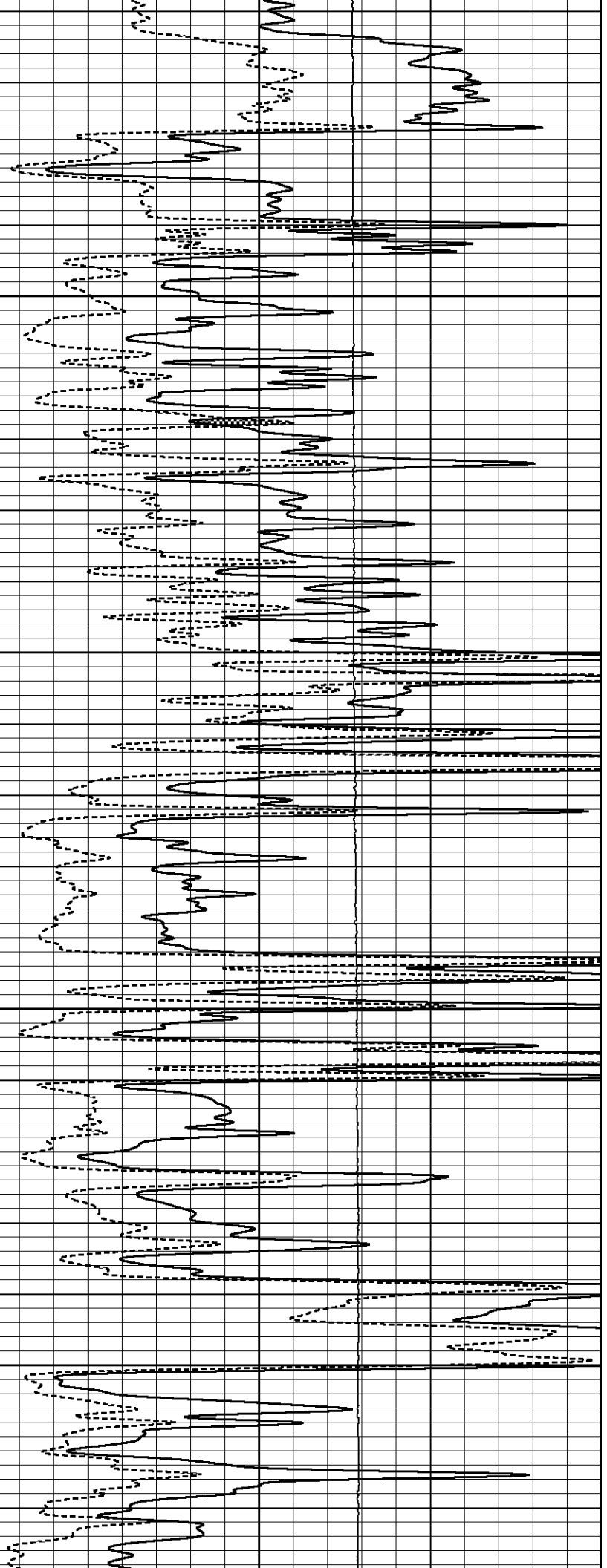


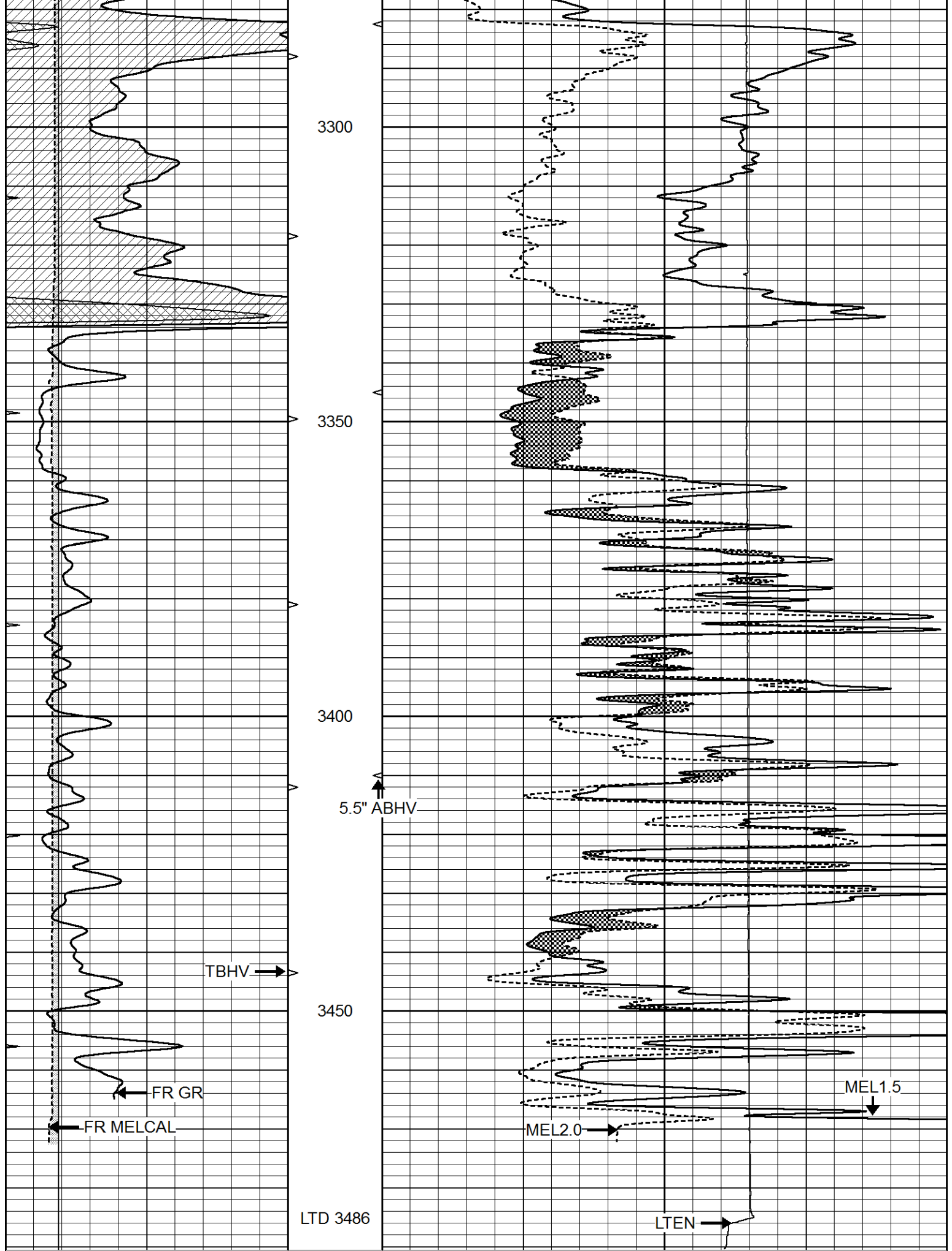
3100

3150

3200

3250





0	GAMMA RAY (GAPI)	150	ABHV	0	MEL1.5 (Ohm-m)	40
6	CAI IPER (in)	16	10 (ft3)	0.0	MEL 2.0 (Ohm-m)	40

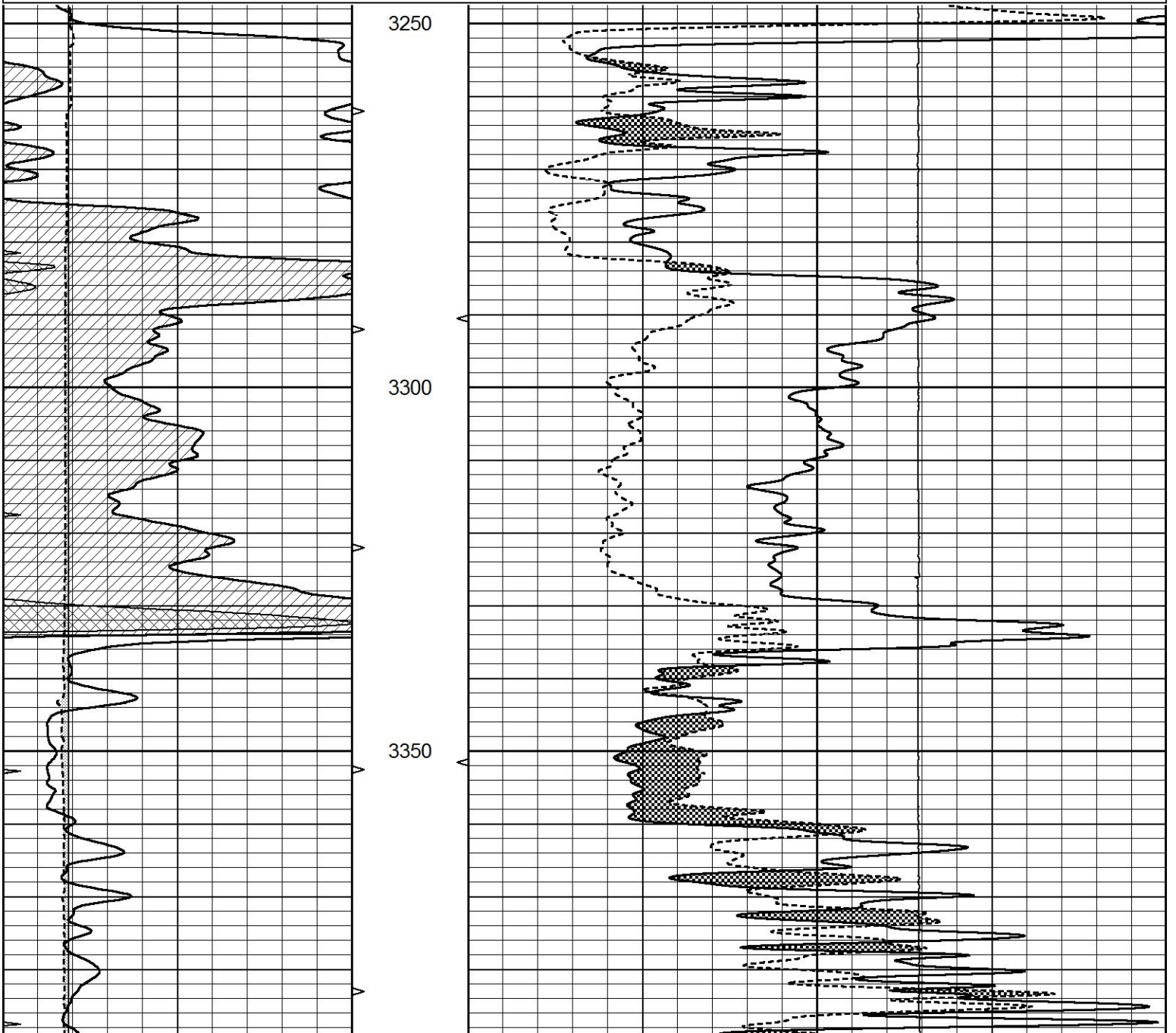
0	MINMK	20	TBHV	0	LTEN (lb)	5000
			0 (ft3) 10			

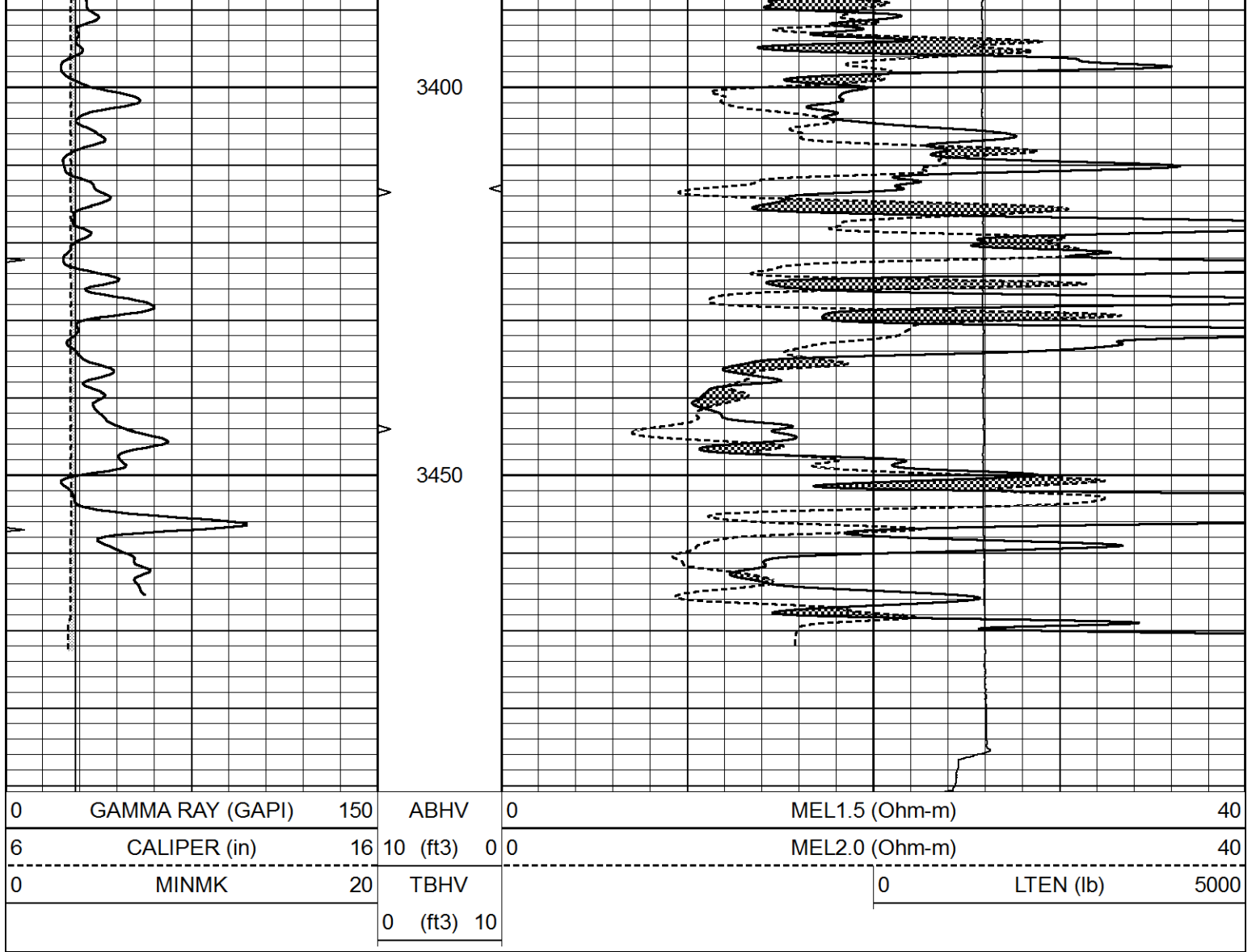


REPEAT SECTION

Database File 7321pe.db
 Dataset Pathname pass4.3
 Presentation Format _micro
 Dataset Creation Fri Aug 18 21:10:38 2023
 Charted by Depth in Feet scaled 1:240

0	GAMMA RAY (GAPI)	150	ABHV	0	MEL1.5 (Ohm-m)	40
6	CALIPER (in)	16	10 (ft3) 0	0	MEL2.0 (Ohm-m)	40
0	MINMK	20	TBHV		0	LTEN (lb) 5000
			0 (ft3) 10			





Calibration Report

Database File 7321pe.db
 Dataset Pathname pass5.3
 Dataset Creation Fri Aug 18 21:00:37 2023

MICRO Calibration Report

Serial Number:	070911	
Tool Model:	ProbeN	
Performed:	Fri Aug 18 20:01:49 2023	
Caliper Calibration:	Gain=4.762	Offset=2.190
References	Low Cal	High Cal
Readings	8.000	16.000
	1.220	2.900
1.5" Calibration:	Gain=32.000	Offset=0.000
References	Low Cal	High Cal
Readings	0.000	20.000
	0.001	1.291
2" Calibration:	Gain=40.000	Offset=0.000
References	Low Cal	High Cal
Readings	0.000	20.000
	0.003	1.103

Gamma Ray Calibration Report

Serial Number:	070558	
Tool Model:	OPEN_GR	
Performed:	Mon Aug 14 04:12:15 2023	
Calibrator Value:	1.0	GAPI
Background Reading:	0.0	cps
Calibrator Reading:	1.0	cps
Sensitivity:	0.3000	GAPI/cps