

SONIC
LOG



Company KNIGHTON OIL COMPANY, INC.
Well BGM #1-2
Field SMITH NORTHEAST
County COWLEY State KANSAS

Location: 990' FSL & 330' FWL
NW - SW - SW
SEC 2 TWP 31S RGE 3E
Permanent Datum GROUND LEVEL Elevation 1230
Log Measured From KELLY BUSHING 9' A.G.L.
Drilling Measured From KELLY BUSHING
Other Services
CDL/CNL/PE
DIL/MEL
Elevation
K.B. 1239
D.F. 1237
G.L. 1230

Date	8/18/23		
Run Number	TWO		
Depth Driller	3487		
Depth Logger	3486		
Bottom Logged Interval	3478		
Top Log Interval	300		
Casing Driller	13 3/8"@342'		
Casing Logger	342		
Bit Size	7 7/8"		
Type Fluid in Hole	CHEMICAL MUD	CHLORIDES 5,200 PPM	
Density / Viscosity	8.9/45		
pH / Fluid Loss	11.0/9.6		
Source of Sample	FLOWLINE		
Rm @ Meas. Temp	.900@97F		
Rmf @ Meas. Temp	.675@97F		
Rmc @ Meas. Temp	1.08@97F		
Source of Rmf / Rmc	MEASUREMENT		
Rm @ BHT	.786@111F		
Time Circulation Stopped	3.5 HOURS		
Time Logger on Bottom	7.45 P.M.		
Maximum Recorded Temperature	111F		
Equipment Number	922339		
Location	HAYS, KANSAS		
Recorded By	JEFF LUEBBERS		
Witnessed By	PHIL ASKEY		

<<< Fold Here >>>

All interpretations are opinions based on inferences from electrical or other measurements and we cannot and do not guarantee the accuracy or correctness of any interpretation, and we shall not, except in the case of gross or willful negligence on our part, be liable or responsible for any loss, costs, damages, or expenses incurred or sustained by anyone resulting from any interpretation made by any of our officers, agents or employees. These interpretations are also subject to our general terms and conditions set out in our current Price Schedule.

15-035-24787-0000 Comments

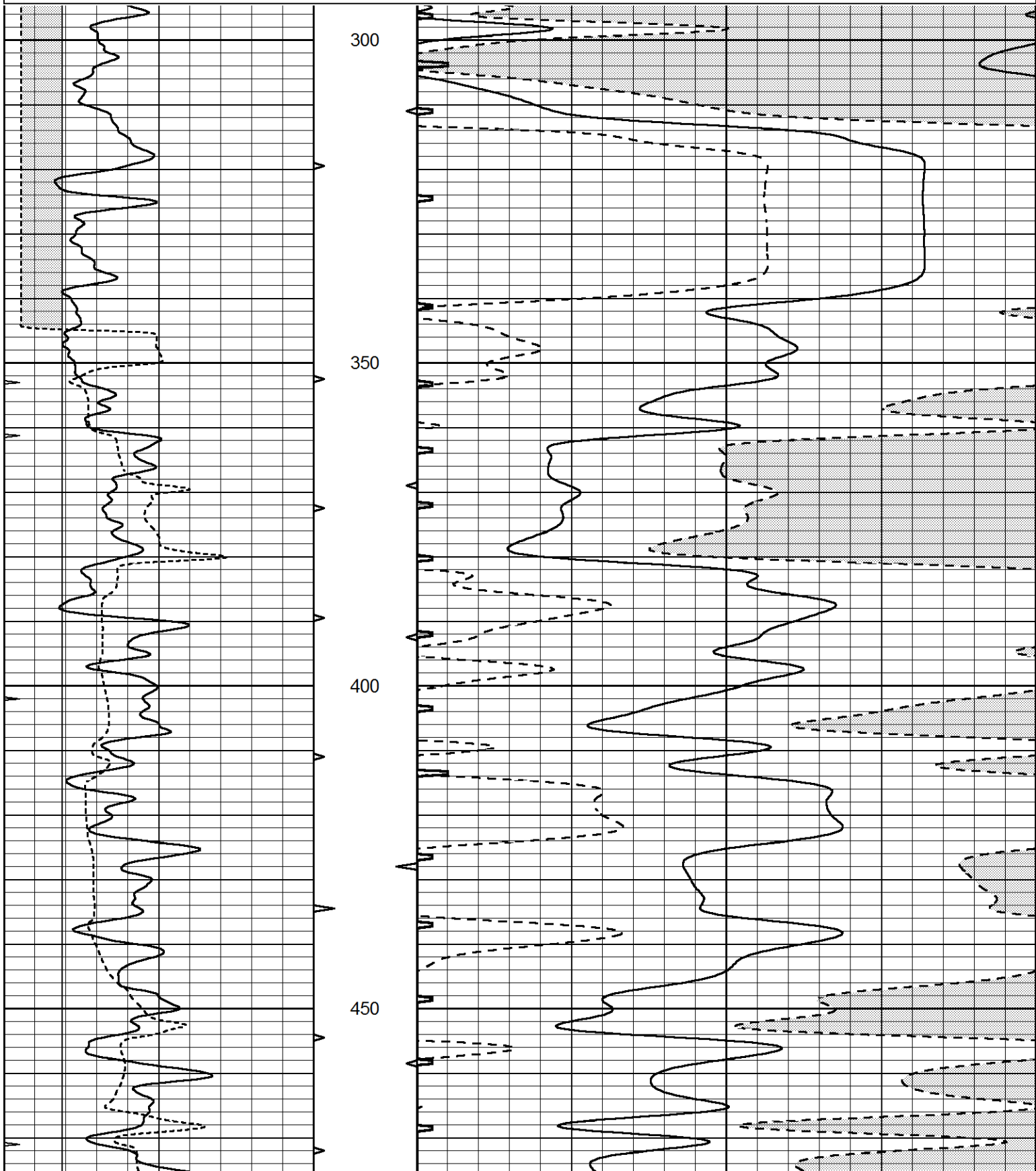
THANK YOU FOR USING ELI WIRELINE HAYS, KANSAS (785) 628-6395
DIRECTIONS
UDALL, KS., 2W. ON HWY 15 TO "41ST ST.", 3/4S., E. INTO

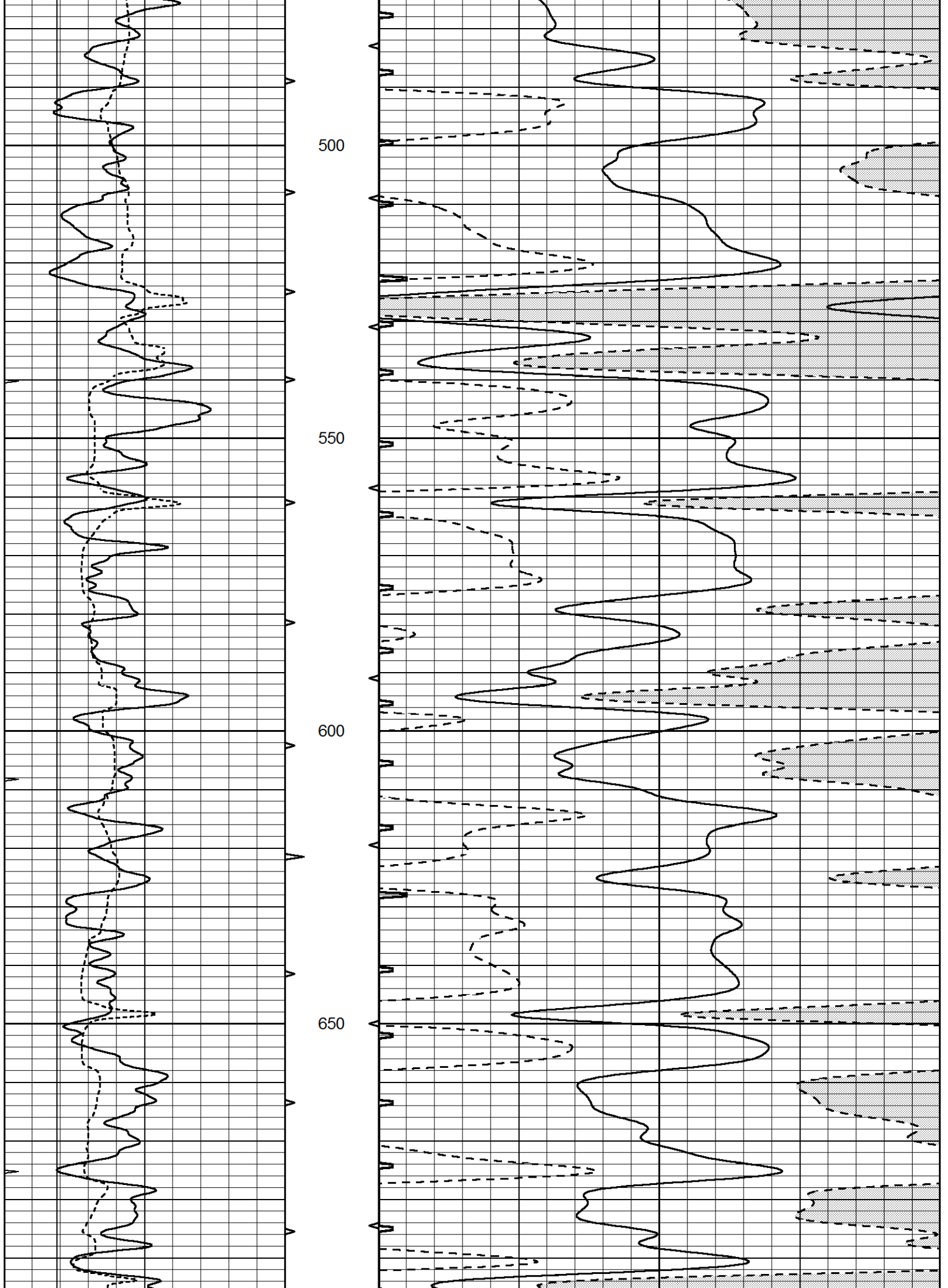


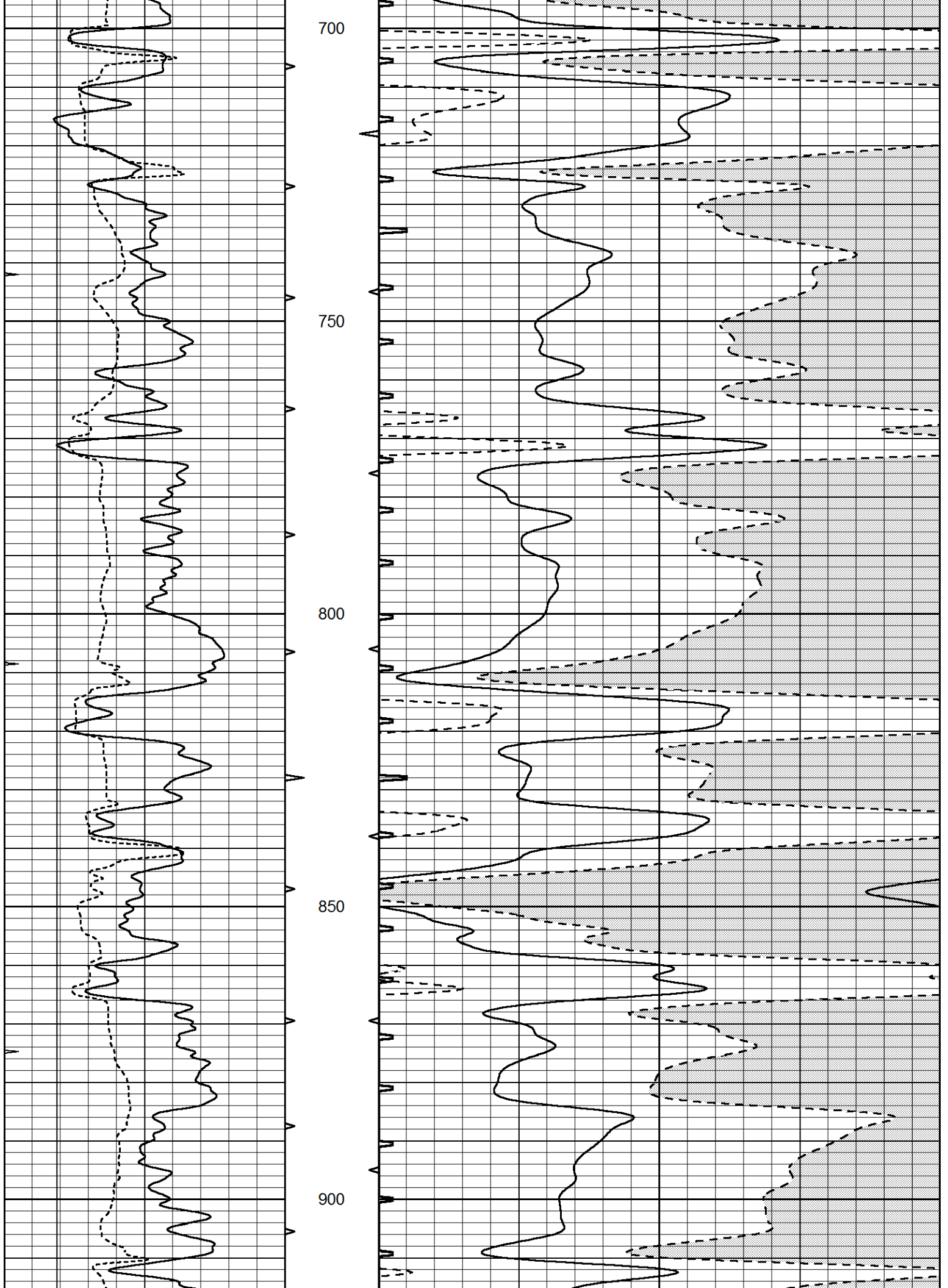
MAIN SECTION

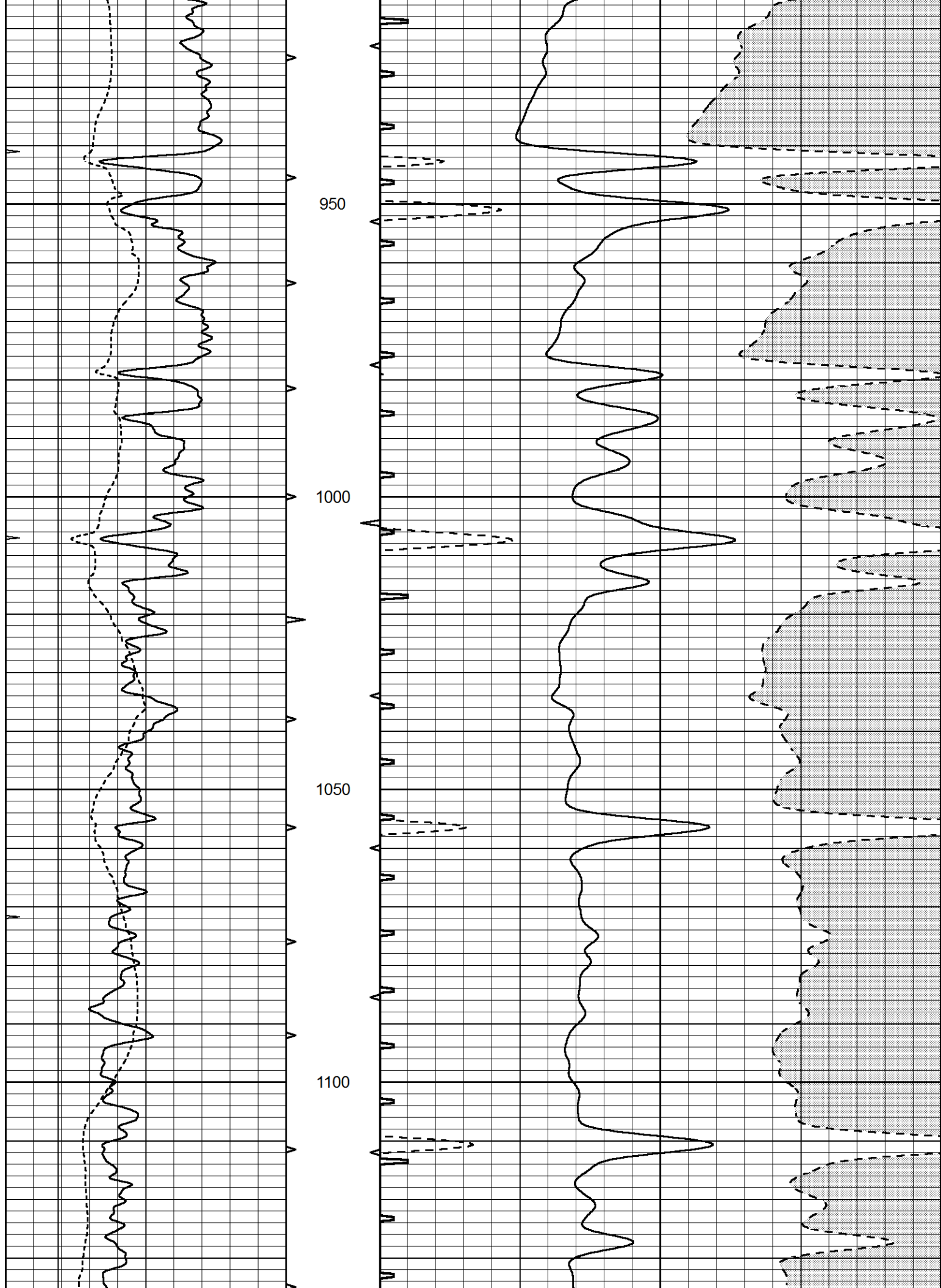
Database File 7321pe.db
 Dataset Pathname pass5.4
 Presentation Format slt
 Dataset Creation Fri Aug 18 21:20:54 2023
 Charted by Depth in Feet scaled 1:240

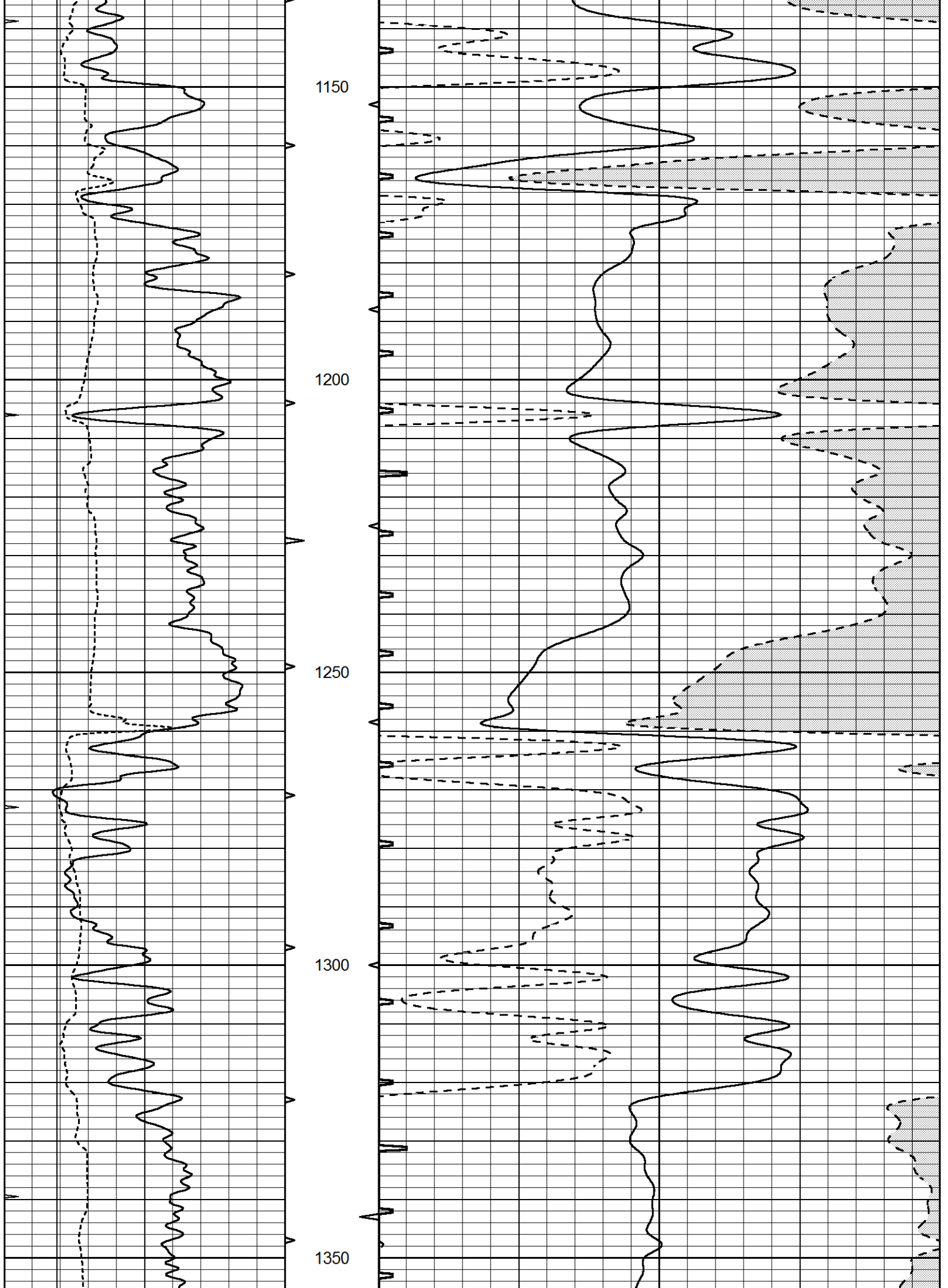
0	GAMMA RAY (GAPI)	150	ABHV	140	DELTA TIME (usec/ft)	40
6	CALIPER (in)	16	10 (ft3)	0	SONIC POROSITY (pu)	-10
0	MINMK	20	TBHV	0	ITT (msec)	20
			0 (ft3)	10		

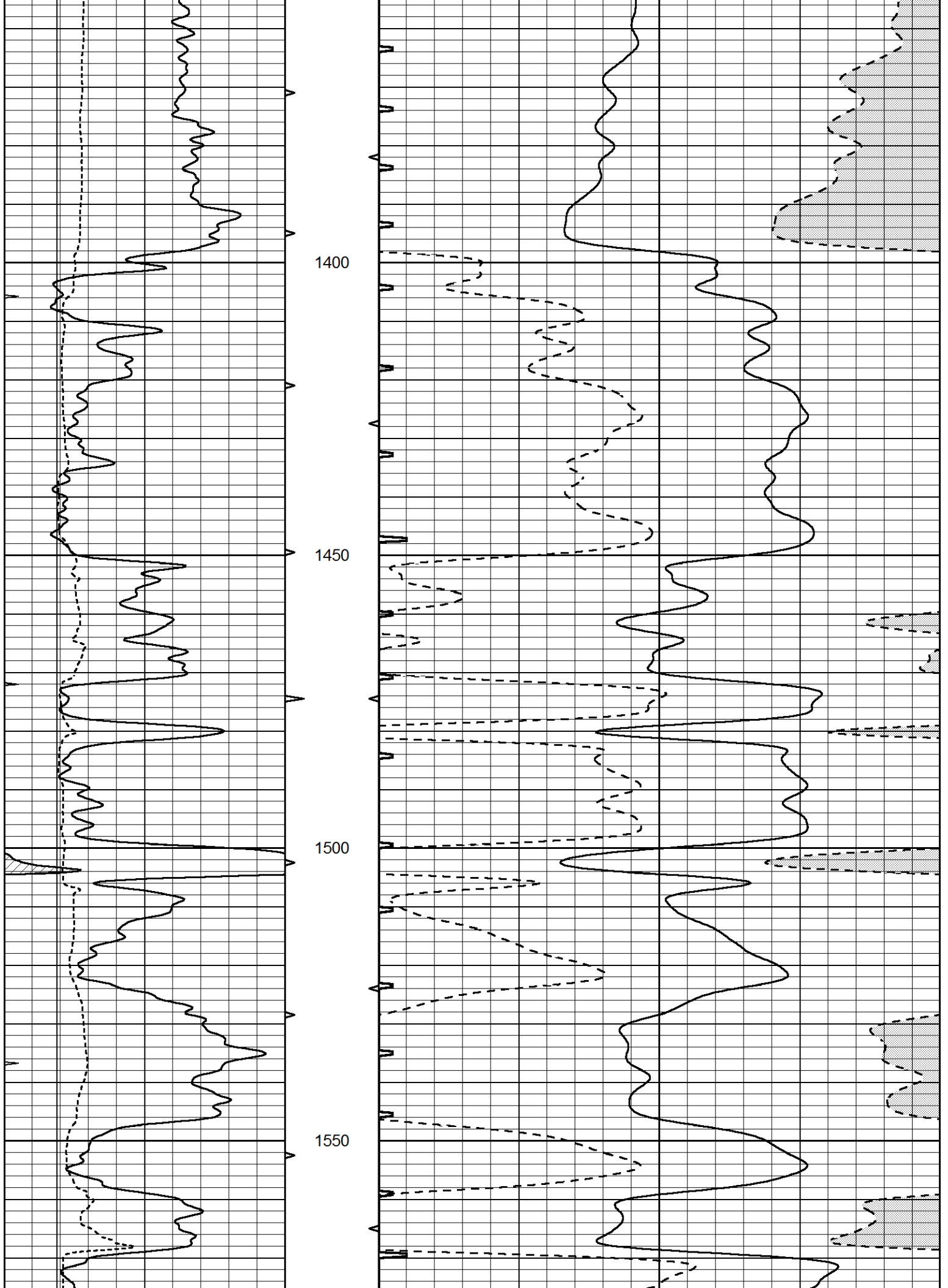


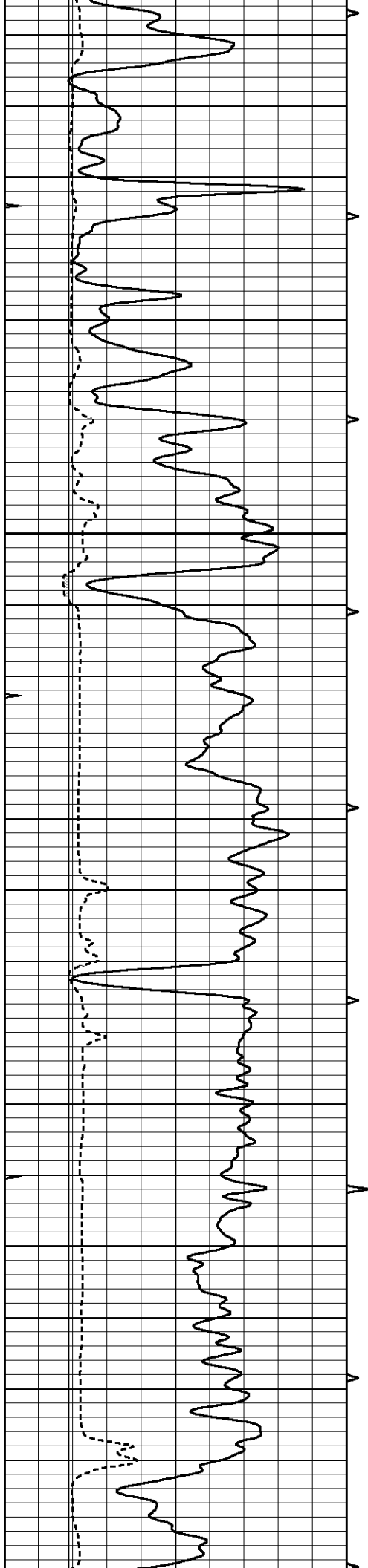










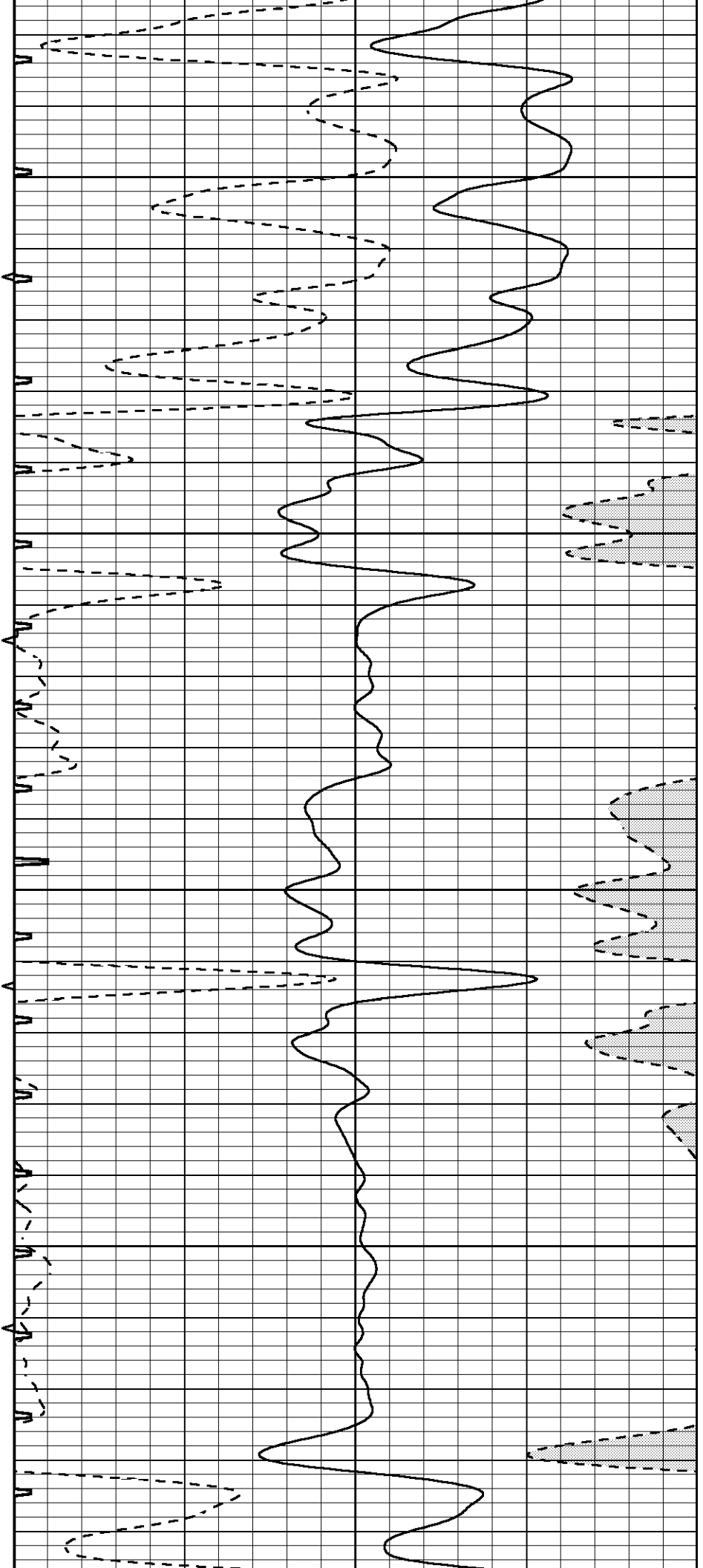


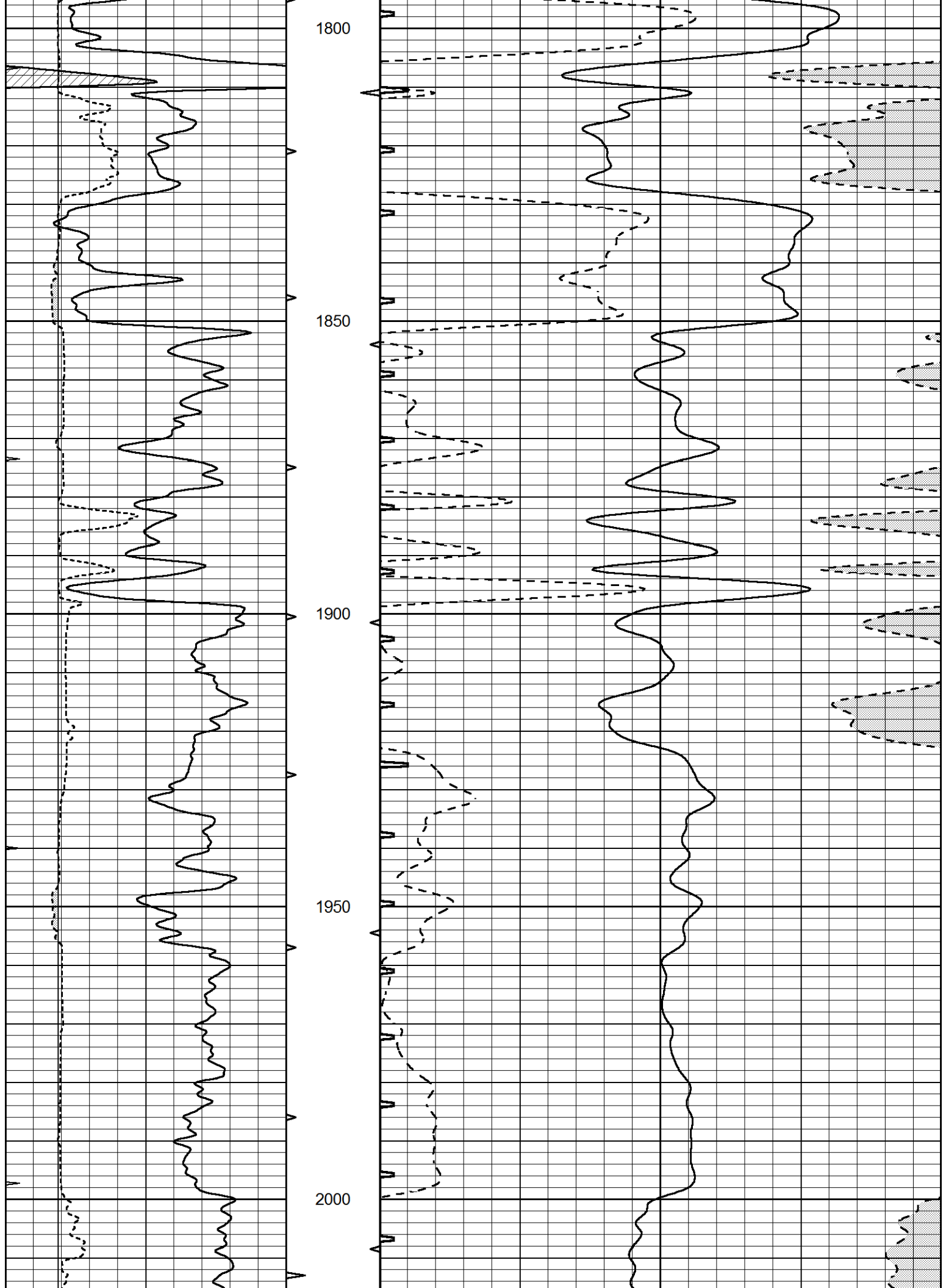
1600

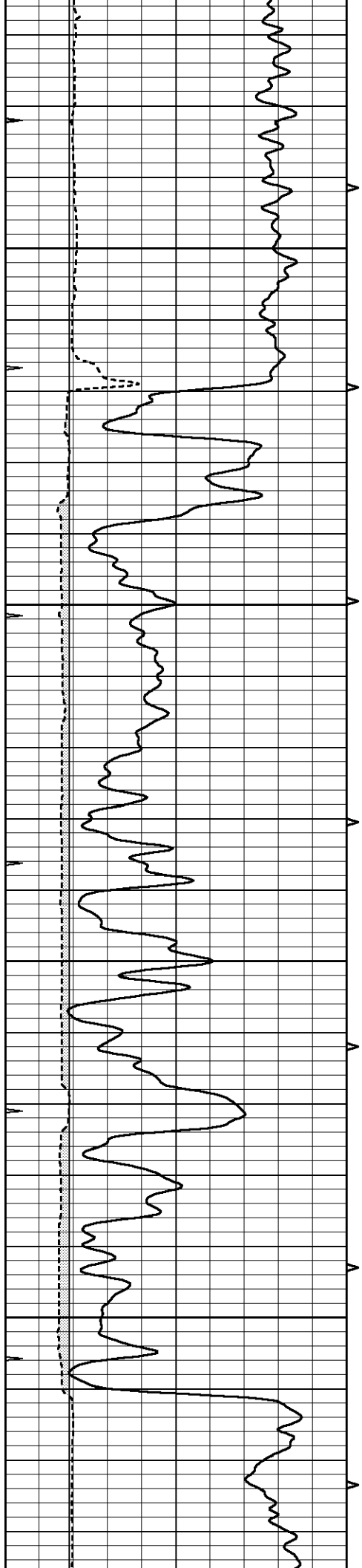
1650

1700

1750





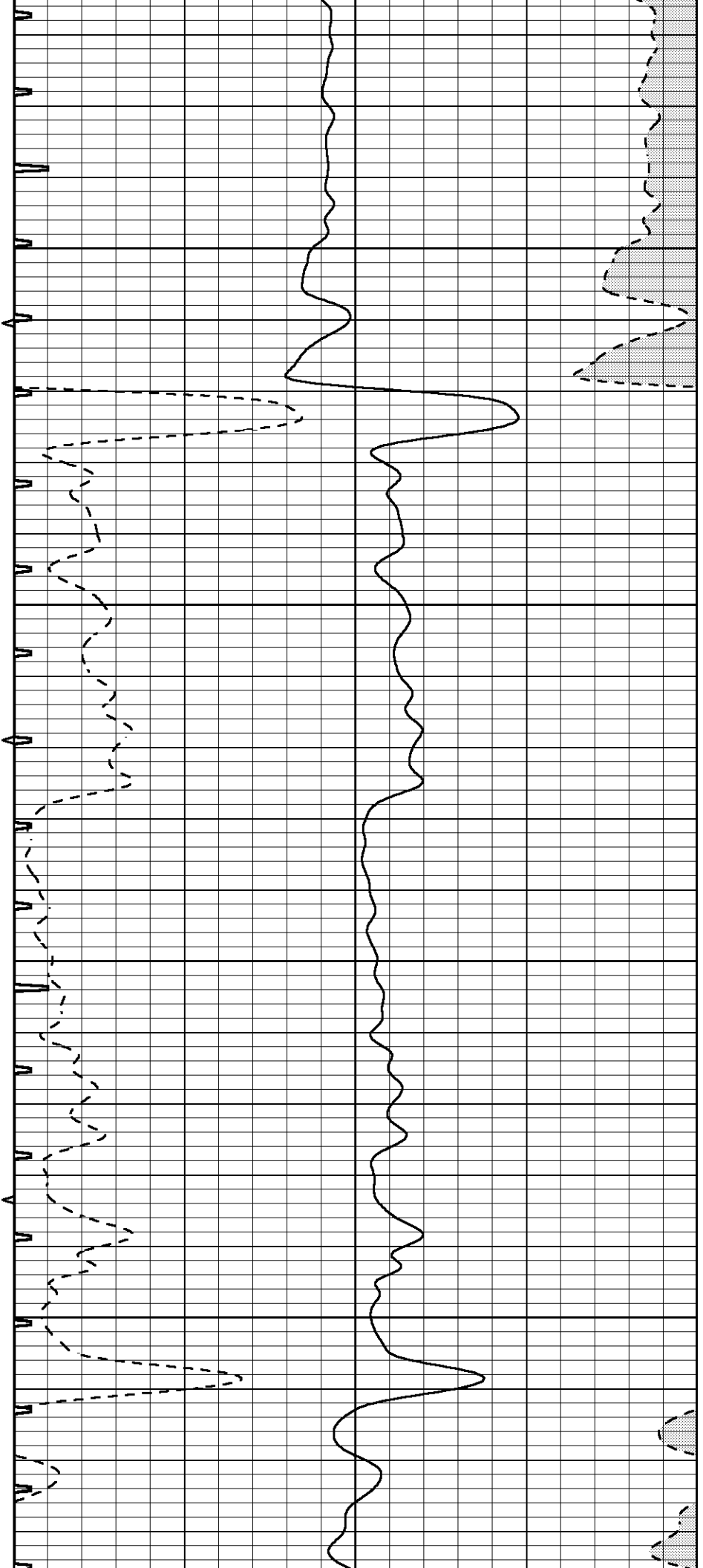


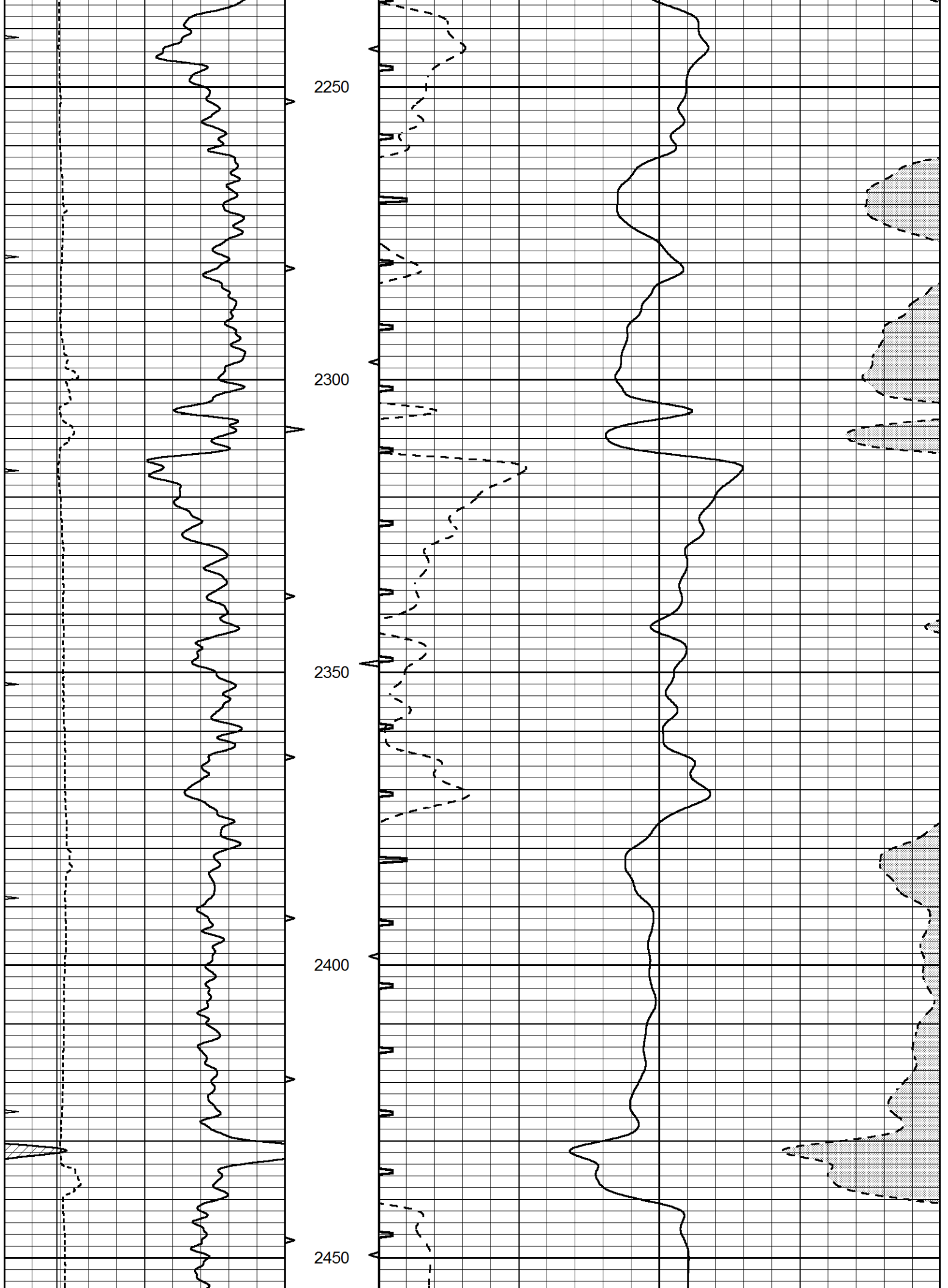
2050

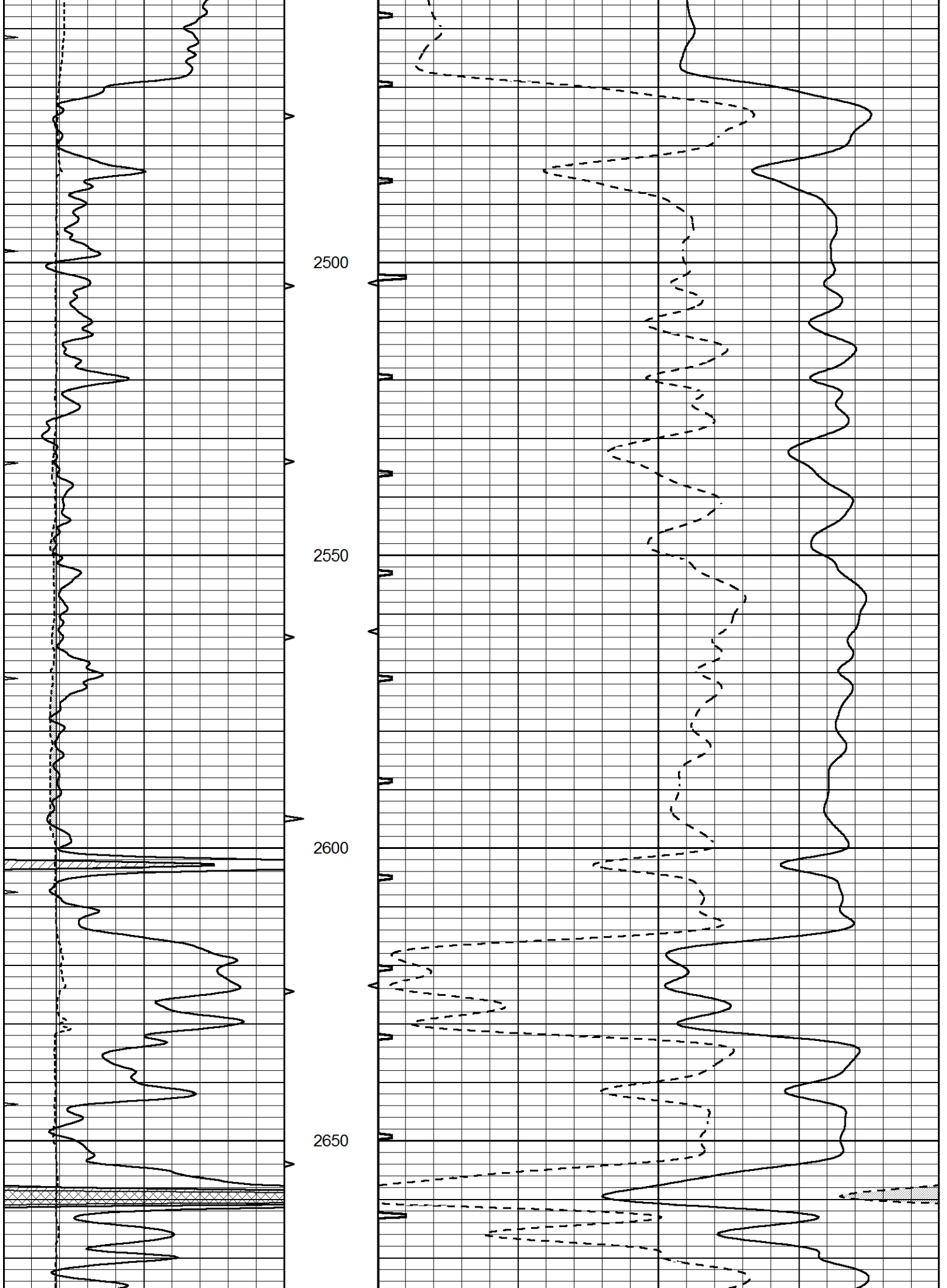
2100

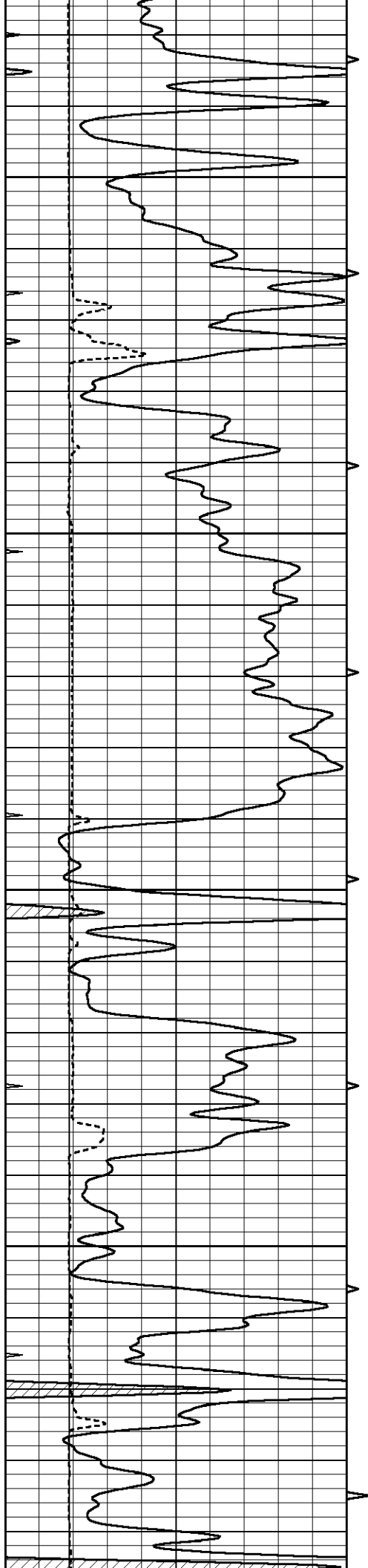
2150

2200







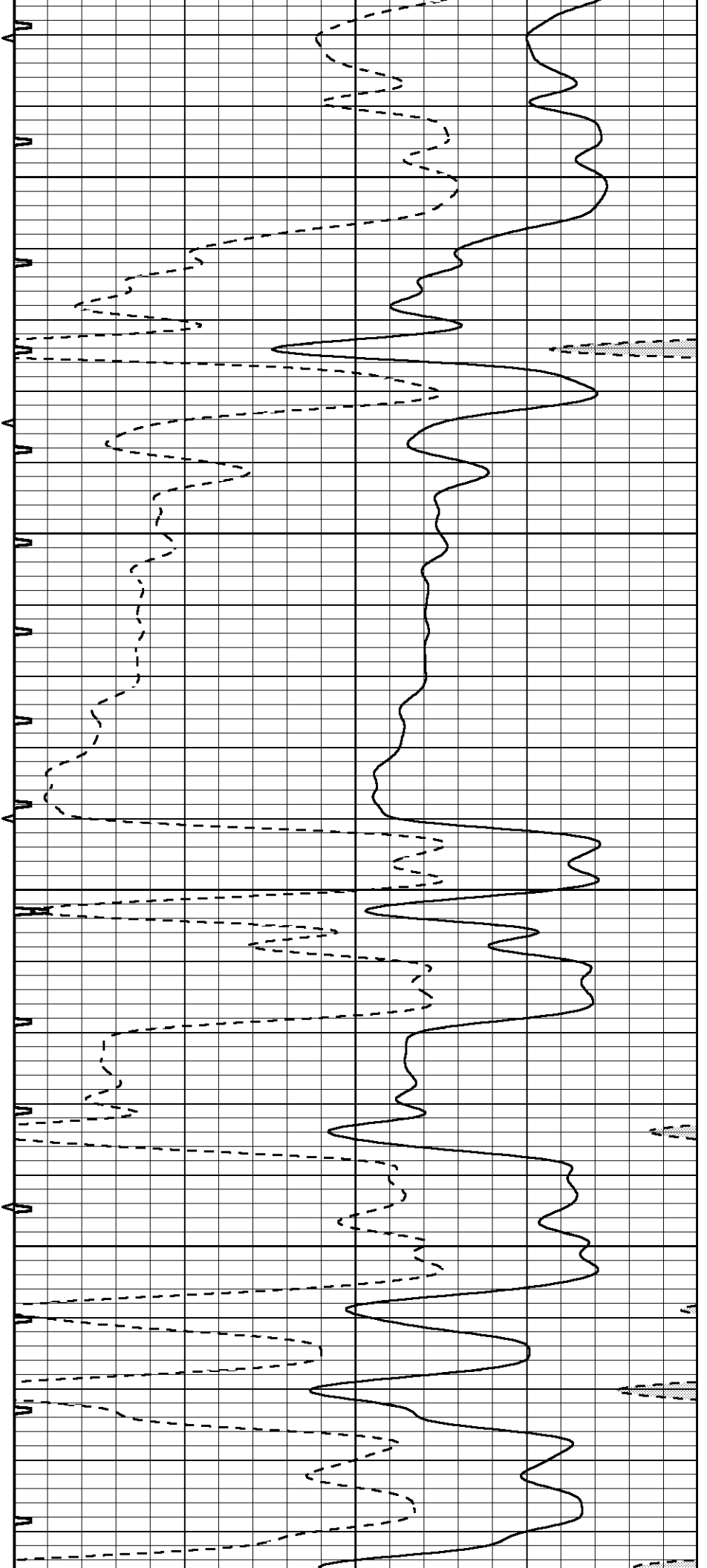


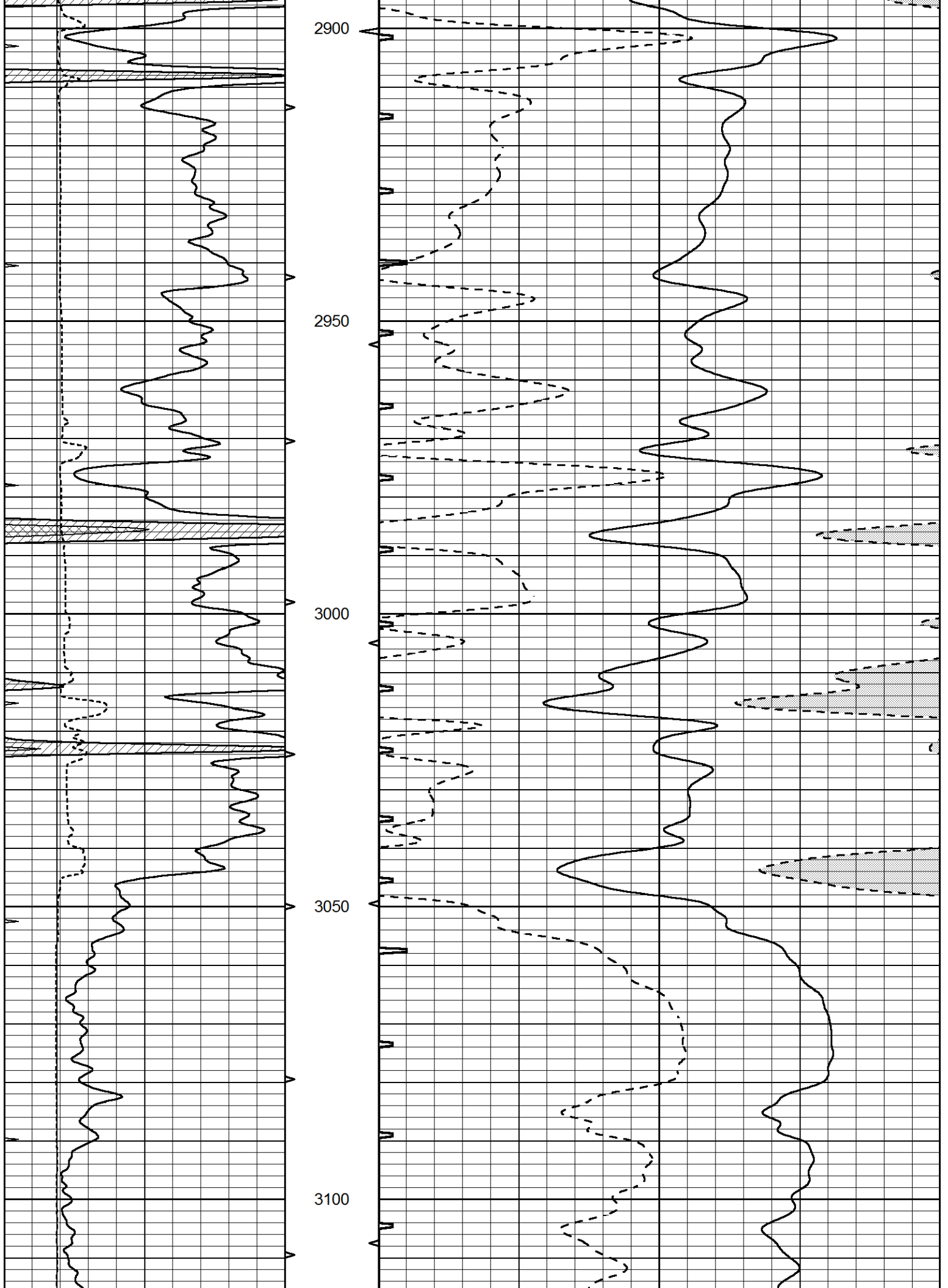
2700

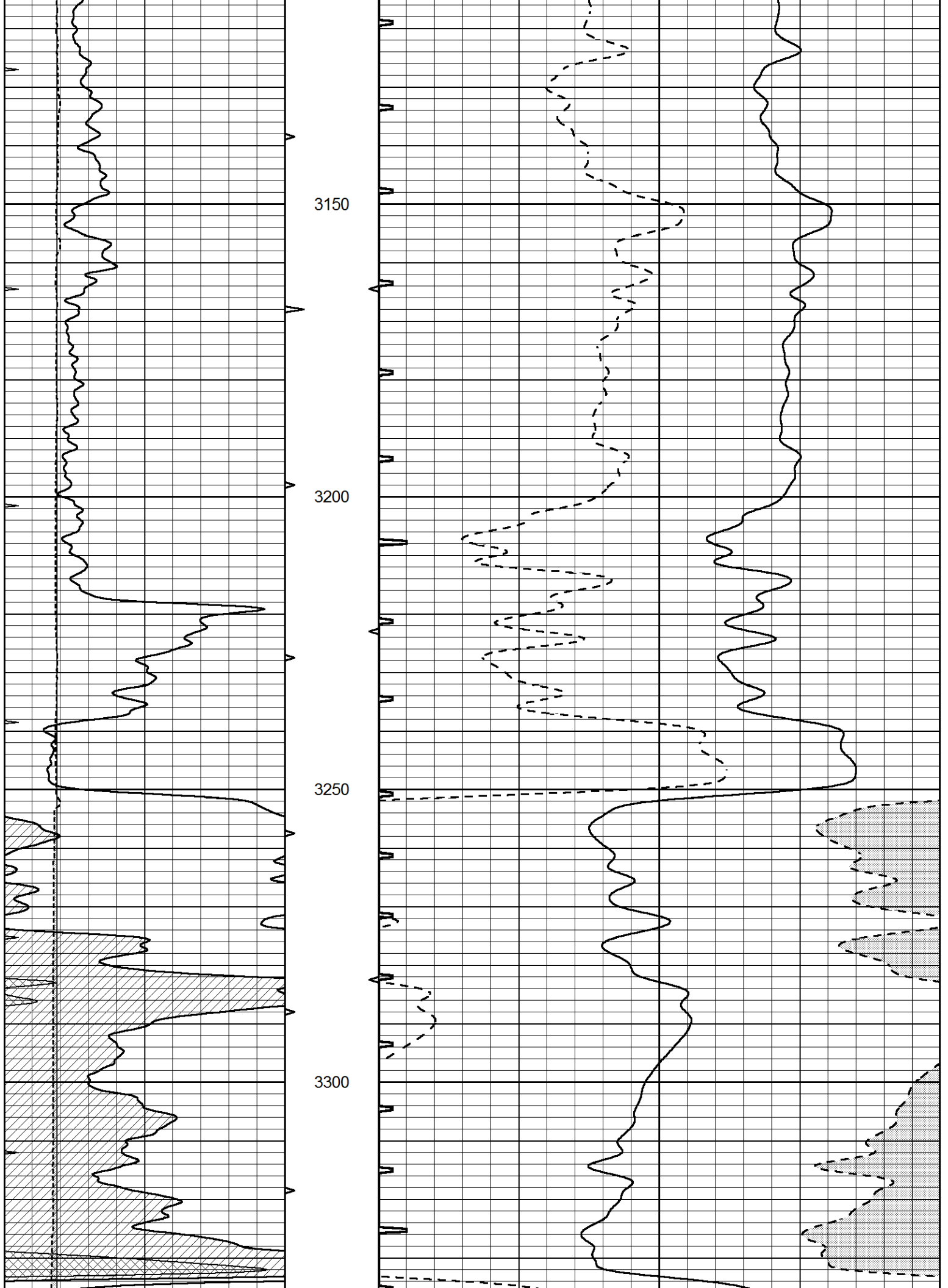
2750

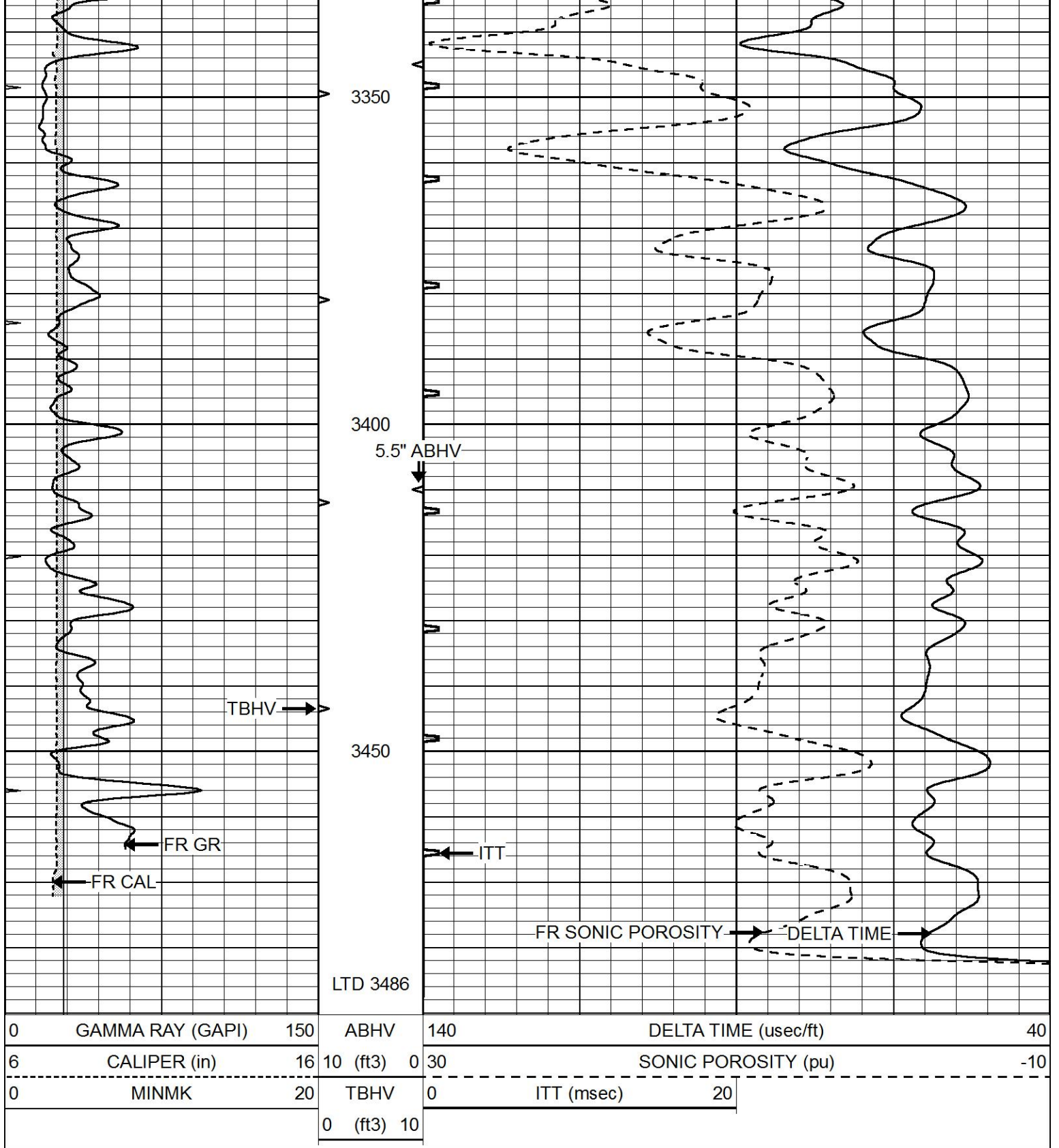
2800

2850





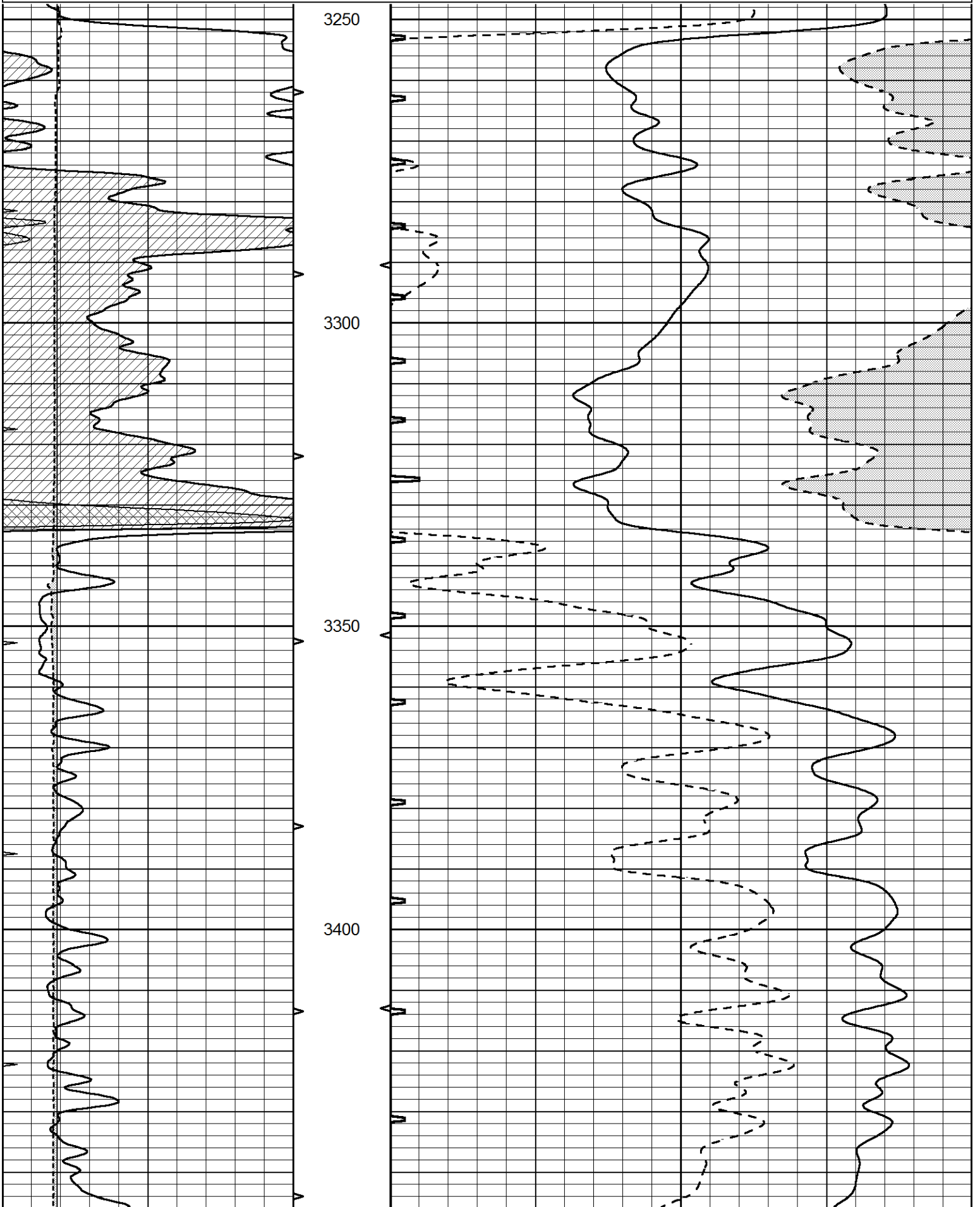


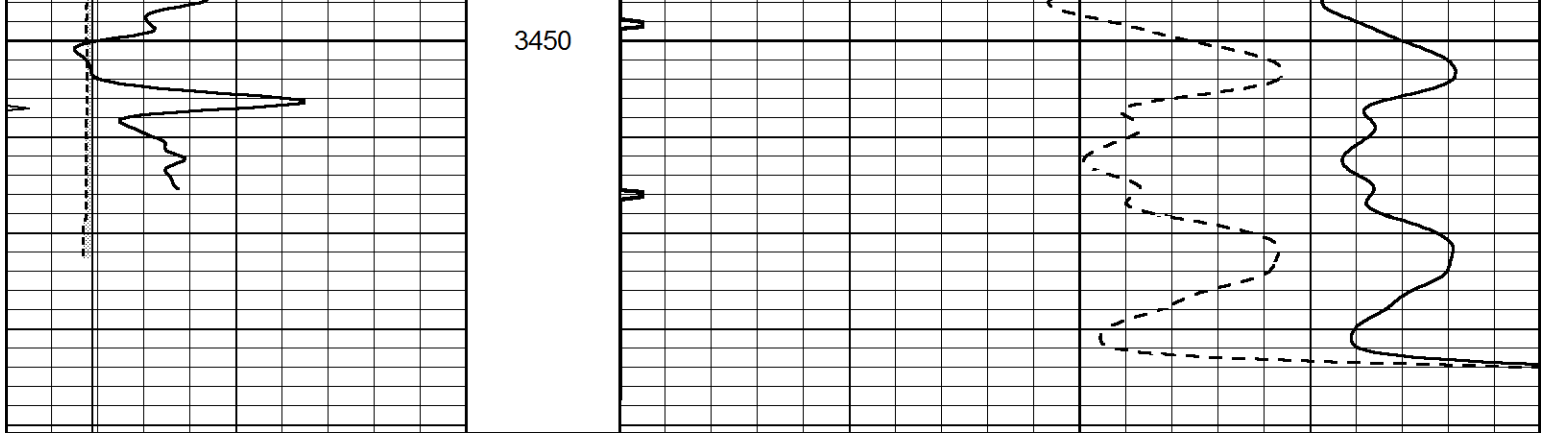


REPEAT SECTION

Database File 7321pe.db
 Dataset Pathname pass4.3
 Presentation Format slt
 Dataset Creation Fri Aug 18 21:10:38 2023
 Charted by Depth in Feet scaled 1:240

0	GAMMA RAY (GAPI)	150	ABHV	140	DELTA TIME (usec/ft)	40	
6	CALIPER (in)	16	10 (ft3)	0	30	SONIC POROSITY (pu)	-10
0	MINMK	20	TBHV	0	ITT (msec)	20	
			0 (ft3)	10			





3450

0	GAMMA RAY (GAPI)	150	ABHV	140	DELTA TIME (usec/ft)	40
6	CALIPER (in)	16	10 (ft3) 0	30	SONIC POROSITY (pu)	-10
0	MINMK	20	TBHV	0	ITT (msec)	20
			0 (ft3) 10			