



# MICRO LOG

Company HERMAN LOEB, LLC.  
 Well HBT #2-9  
 Field FRALICK WEST EXT.  
 County KIOWA  
 State KANSAS

Company HERMAN LOEB, LLC.  
 Well HBT #2-9  
 Field FRALICK WEST EXT.  
 County KIOWA State KANSAS

Location: API #: 15-097-21861-00-00  
 2674 FNL & 357 FEL  
 NW - NE - NE - SE  
 SEC 9 TWP 28S RGE 20W  
 Permanent Datum GROUND LEVEL Elevation 2309  
 Log Measured From KELLY BUSHING 13' A.G.L.  
 Drilling Measured From KELLY BUSHING  
 Other Services CDL/CNL/PE DIL  
 Elevation K.B. 2322  
 D.F. 2320  
 G.L. 2309

Date	5/27/22
Run Number	TWO
Depth Driller	5000
Depth Logger	4999
Bottom Logged Interval	4997
Top Log Interval	4000
Casing Driller	8 5/8"@588'
Casing Logger	588
Bit Size	7 7/8
Type Fluid in Hole	CHEMICAL MUD
Density / Viscosity	9.1/55
PH / Fluid Loss	8.5/11.6
Source of Sample	FLOWLINE
Rm @ Meas. Temp	0.90@75F
Rmt @ Meas. Temp	0.68@75F
Rmc @ Meas. Temp	1.08@75F
Source of Rmf / Rmc	MEASUREMENT
Rm @ BHT	.540@125F
Time Circulation Stopped	4.5 HOURS
Time Logger on Bottom	10:00 P.M.
Maximum Recorded Temperature	125F
Equipment Number	3802
Location	HAYS, KANSAS
Recorded By	COLE ROBBERN
Witnessed By	JON CHRISTENSEN
	TJ DREILING

<<< Fold Here >>>

All interpretations are opinions based on inferences from electrical or other measurements and we cannot and do not guarantee the accuracy or correctness of any interpretation, and we shall not, except in the case of gross or willful negligence on our part, be liable or responsible for any loss, costs, damages, or expenses incurred or sustained by anyone resulting from any interpretation made by any of our officers, agents or employees. These interpretations are also subject to our general terms and conditions set out in our current Price Schedule.

### Comments

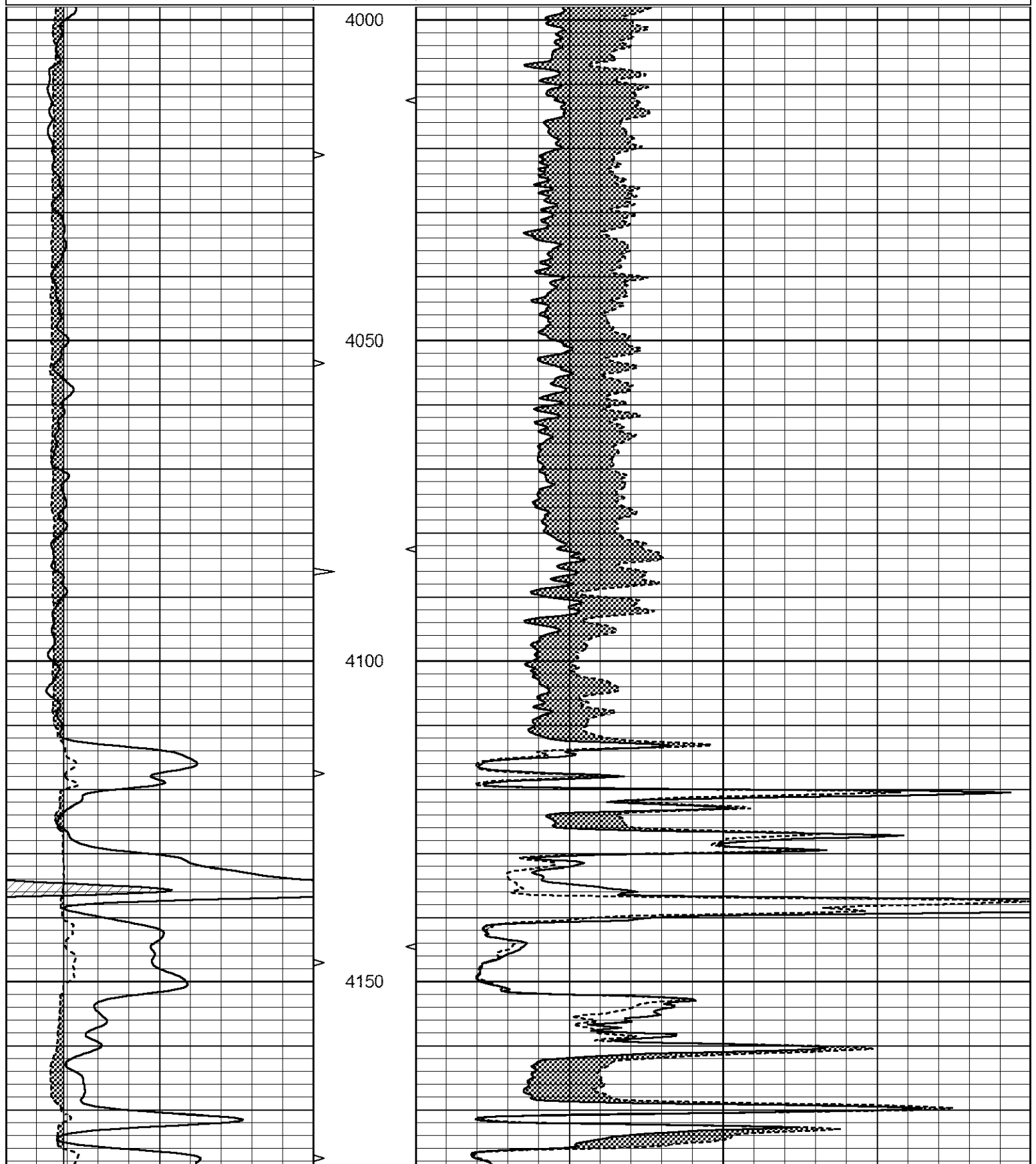
THANK YOU FOR USING ELI WIRELINE SERVICES, HAYS, KS. ( 785 ) 628-6395  
 DIRECTIONS  
 MULLINVILLE, KS. NORTH ON 10TH STREET 1.5 MILES TO 1-5 RD,  
 WEST 1.5 MILES TO 7TH STREET, 1 MILE NORTH, WEST INTO

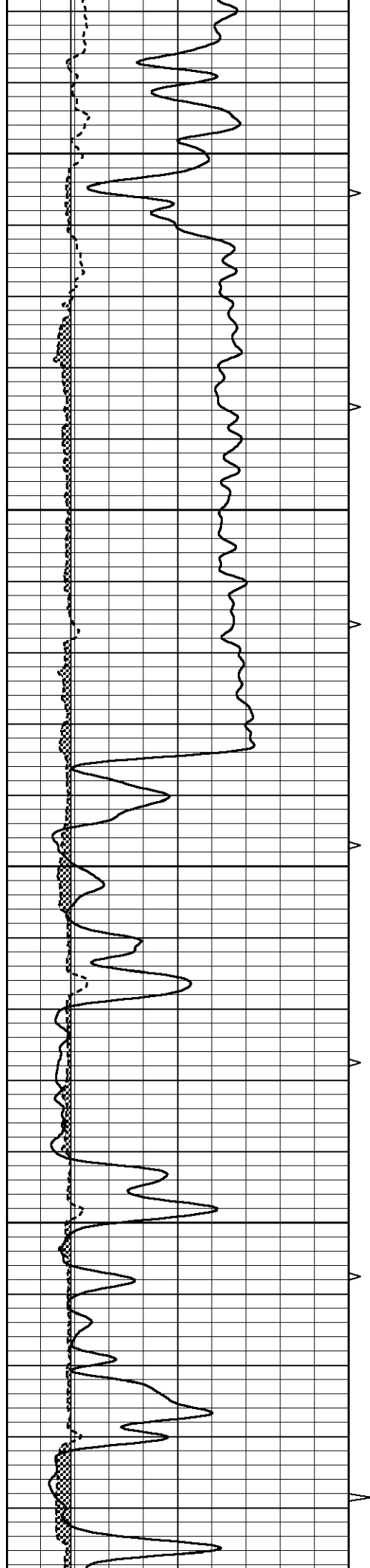


# MAIN SECTION

Database File 6535pe.db  
 Dataset Pathname pass7.7  
 Presentation Format \_micro  
 Dataset Creation Fri May 27 22:57:28 2022  
 Charted by Depth in Feet scaled 1:240

0	GAMMA RAY (GAPI)	150	ABHV	0	MEL1.5 (Ohm-m)	40
6	CALIPER (in)	16	10 (ft3)	0	MEL2.0 (Ohm-m)	40
			TBHV			
			0 (ft3)	10		



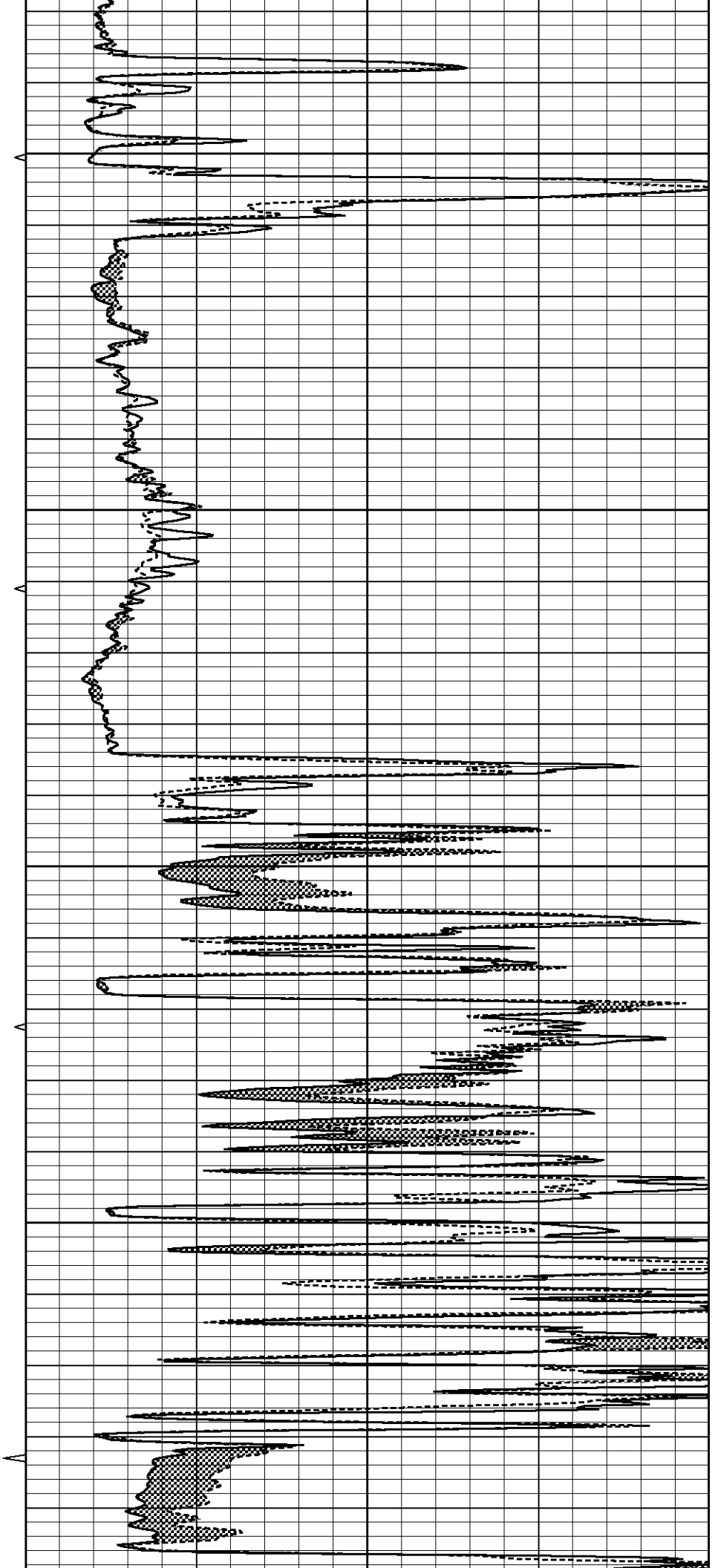


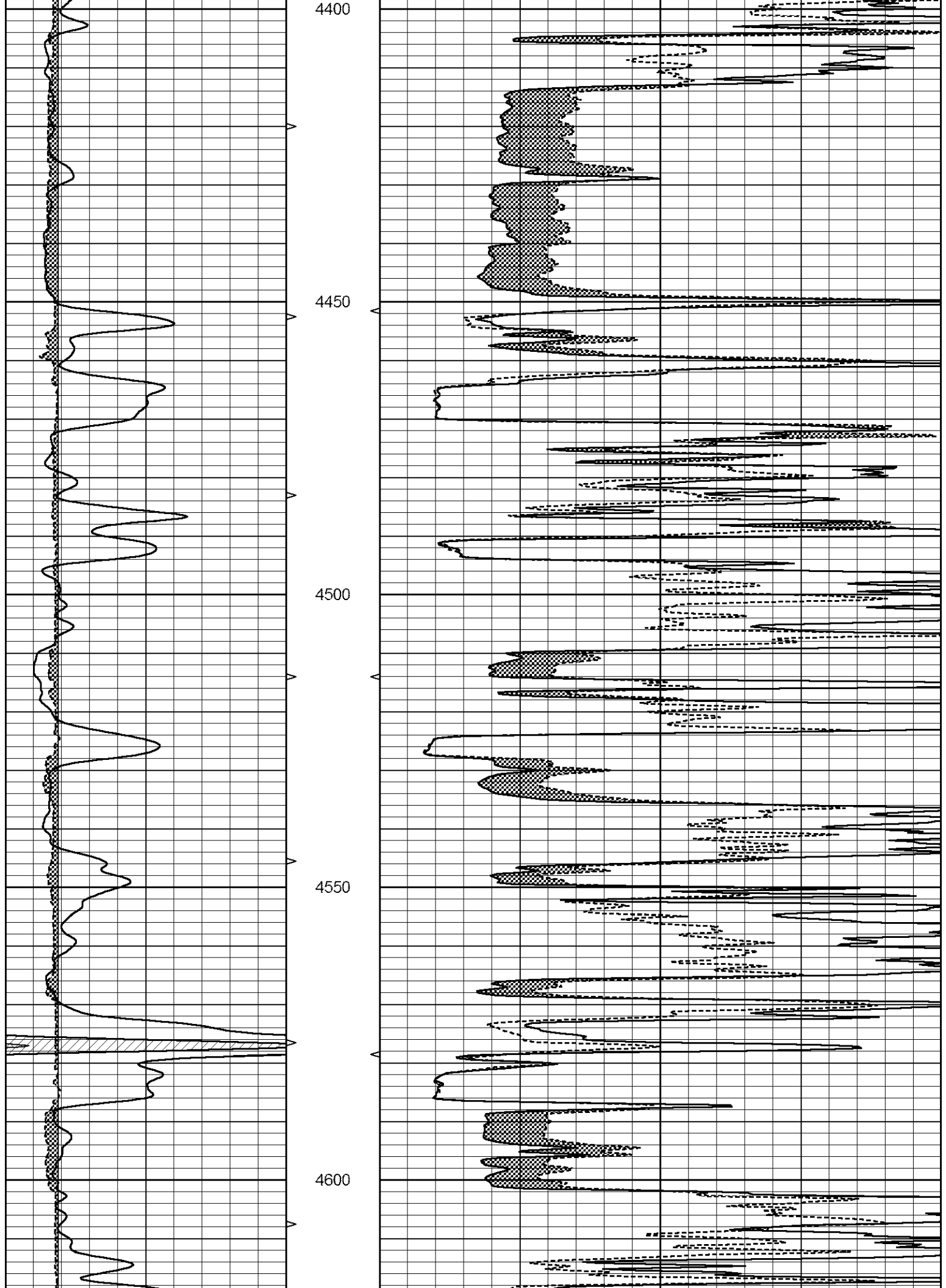
4200

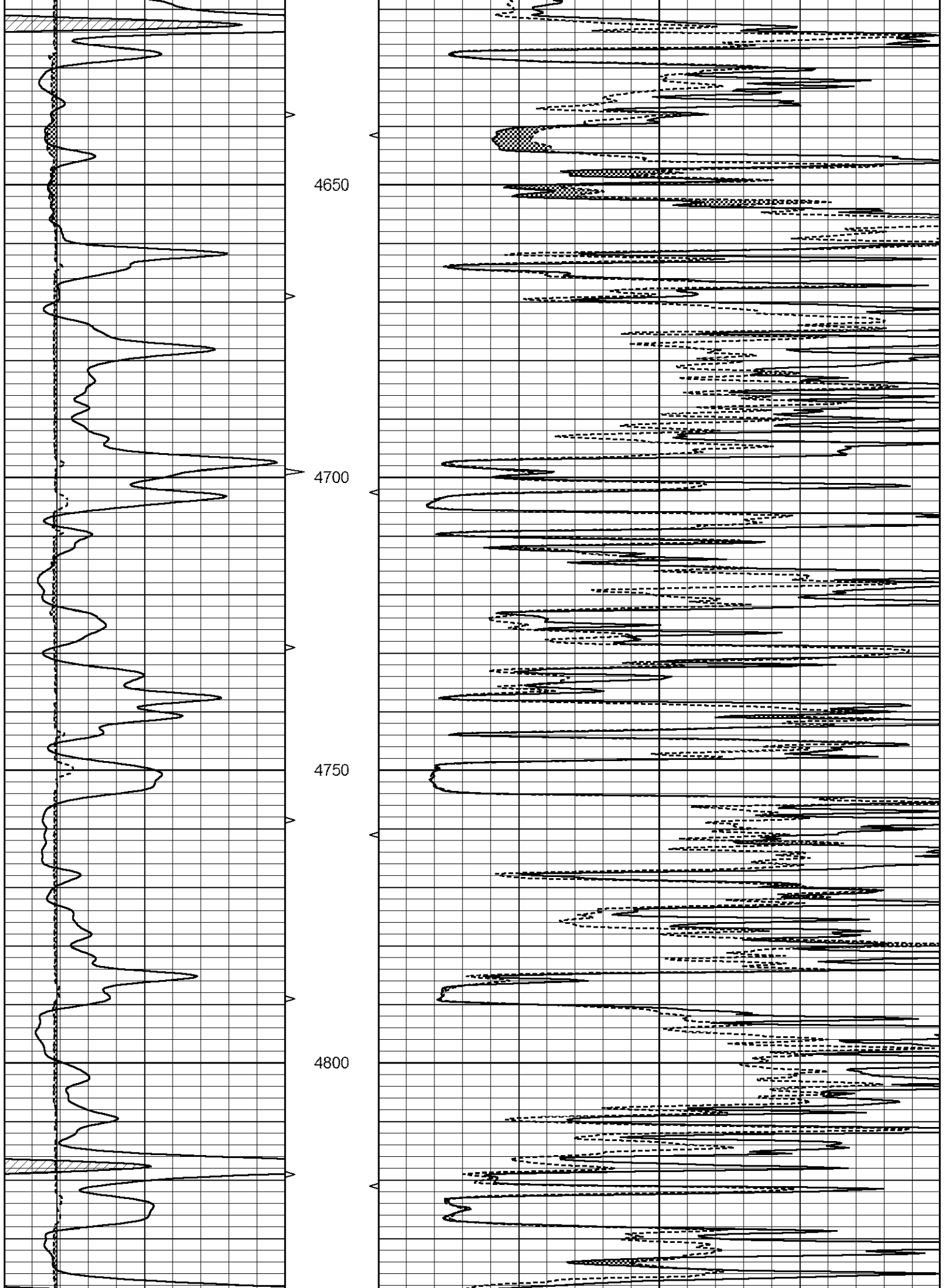
4250

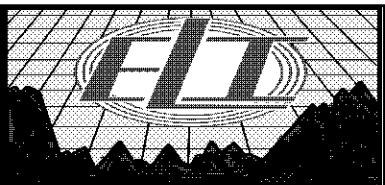
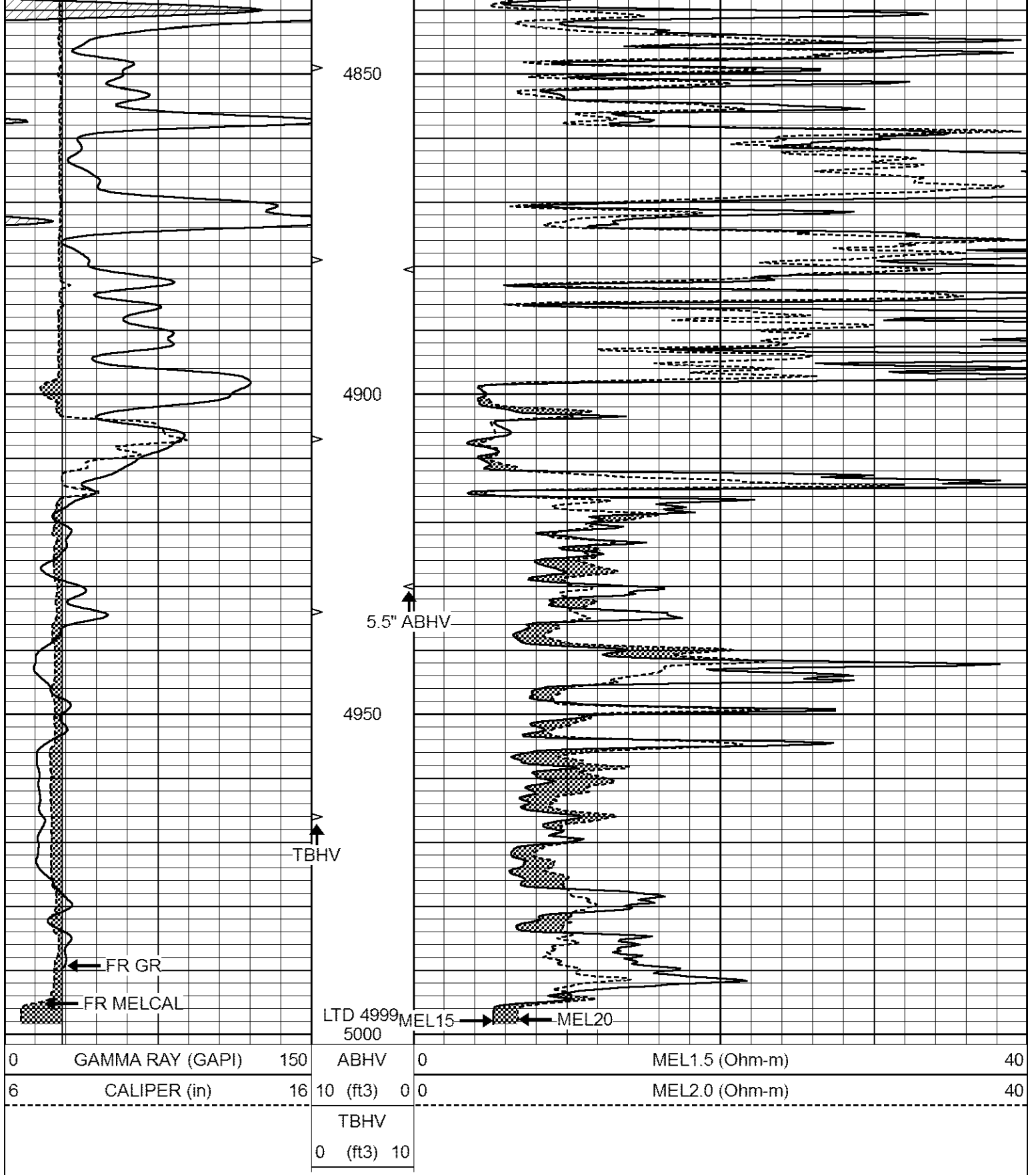
4300

4350



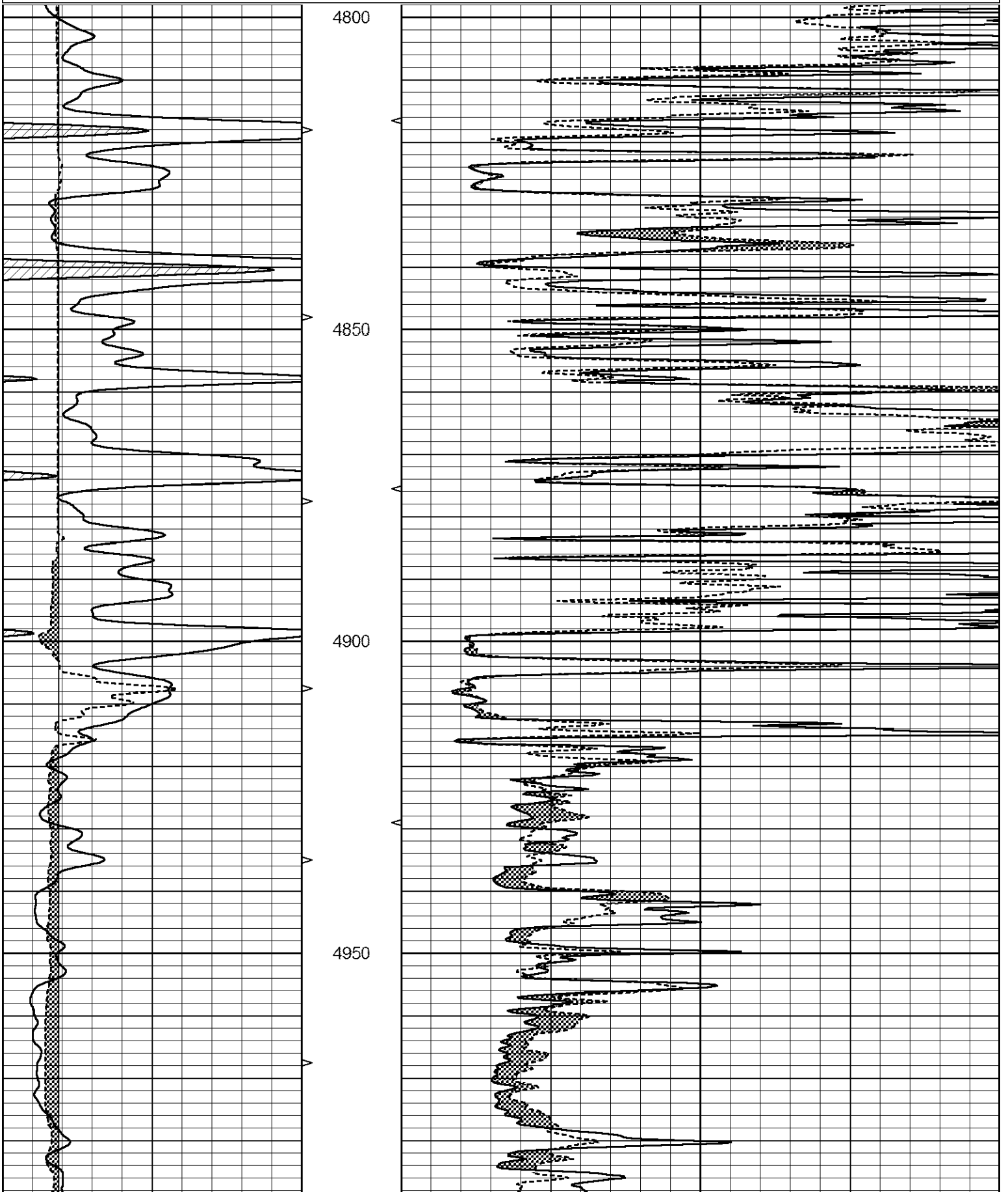






# REPEAT SECTION

0	GAMMA RAY (GAPI)	150	ABHV	0	MEL1.5 (Ohm-m)	40
6	CALIPER (in)	16	10 (ft3)	0	MEL2.0 (Ohm-m)	40
			TBHV			
			0 (ft3)	10		



			5000						
0	GAMMA RAY (GAPI)	150	ABHV	0		MEL1.5 (Ohm-m)			40
6	CALIPER (in)	16	10 (ft3)	0	0	MEL2.0 (Ohm-m)			40
			TBHV						
			0 (ft3)	10					

Calibration Report

Database File      6535pe.db  
Dataset Pathname    pass7.7  
Dataset Creation    Fri May 27 22:57:28 2022

MICRO\_USR Calibration Report

Serial Number:	070910		
Tool Model:	ProbeL		
Performed:	Tue May 17 08:13:59 2022		
Caliper Calibration:	Gain=7.212	Offset=2.600	
References	Low Cal	High Cal	
Readings	8.000	14.000	
	0.725	1.557	
1.5" Calibration:	Gain=30.000	Offset=2.000	
References	Low Cal	High Cal	
Readings	0.000	20.000	
	0.004	1.335	
2" Calibration:	Gain=58.000	Offset=1.200	
References	Low Cal	High Cal	
Readings	0.000	20.000	
	0.004	1.029	

Microlog Calibration Report

Serial-Model:	070910-ProbeL				
Performed:	(Not Performed)				
	Readings		References	Results	
	Zero	Cal	Zero	Cal	m      b
Normal	0.0000	1.0000	V	0.0000	1.0000    0.0000
Inverse	0.0000	1.0000	V	0.0000	1.0000    0.0000
Caliper	0.0000	1.0000	V	0.0000	1.0000    0.0000

Gamma Ray Calibration Report

Serial Number:	070558	
Tool Model:	Probe1	
Performed:	Tue May 17 15:23:49 2022	
Calibrator Value:	1.0	GAPI
Background Reading:	0.0	cps
Calibrator Reading:	1.0	cps
Sensitivity:	0.2200	GAPI/cps