



MICRO
LOG

Company	PALOMINO PETROLEUM	
Well	EIGHT DAYS A WEEK #1	
Field	PRAIRIE RIDGE NORTHWEST	
County	LANE	State KS
Location:	API #: 15-101-22676	
	165' FNL & 330' FEL	
Permanent Datum	SEC 12 TWP 16S RGE 27W	Ground Level Elevation 2626
Log Measured From	KB 5' AGL	Elevation 2631
Drilling Measured From	KB	D.F. 2629
		G.L. 2626
Other Services	CDNL DIL	

Date	07/26/22
Run Number	TWO
Depth Driller	4627
Depth Logger	4627
Bottom Logged Interval	4625
Top Log Interval	3400
Casing Driller	8 5/8" @ 219
Casing Logger	219
Bit Size	7 7/8"
Type Fluid in Hole	Chemical
Density / Viscosity	9.4/53
pH / Fluid Loss	10.0/8.8
Source of Sample	Pit
Rm @ Meas. Temp	1.65@70degf
Rmf @ Meas. Temp	1.24@70degf
Rmc @ Meas. Temp	1.98@70degf
Source of Rmf / Rmc	Calculated
Rm @ BHT	.97@118degf
Time Circulation Stopped	10:00 A.M.
Time Logger on Bottom	12:30 PM
Maximum Recorded Temperature	118degf
Equipment Number	T605
Location	Hays, KS
Recorded By	GUS PFANENSTIEL
Witnessed By	KIM SHOEMAKER

<<< Fold Here >>>

All interpretations are opinions based on inferences from electrical or other measurements and we cannot and do not guarantee the accuracy or correctness of any interpretation, and we shall not, except in the case of gross or willful negligence on our part, be liable or responsible for any loss, costs, damages, or expenses incurred or sustained by anyone resulting from any interpretation made by any of our officers, agents or employees. These interpretations are also subject to our general terms and conditions set out in our current Price Schedule.

Comments

UTICA WEST TO A RD. NORTH 3 MILES(ABOUT A HALF MILE NORTH OF CORRECTION VURVES) WEST INTO.

Thank You for using Gemini Wireline LLC
785-625-1182

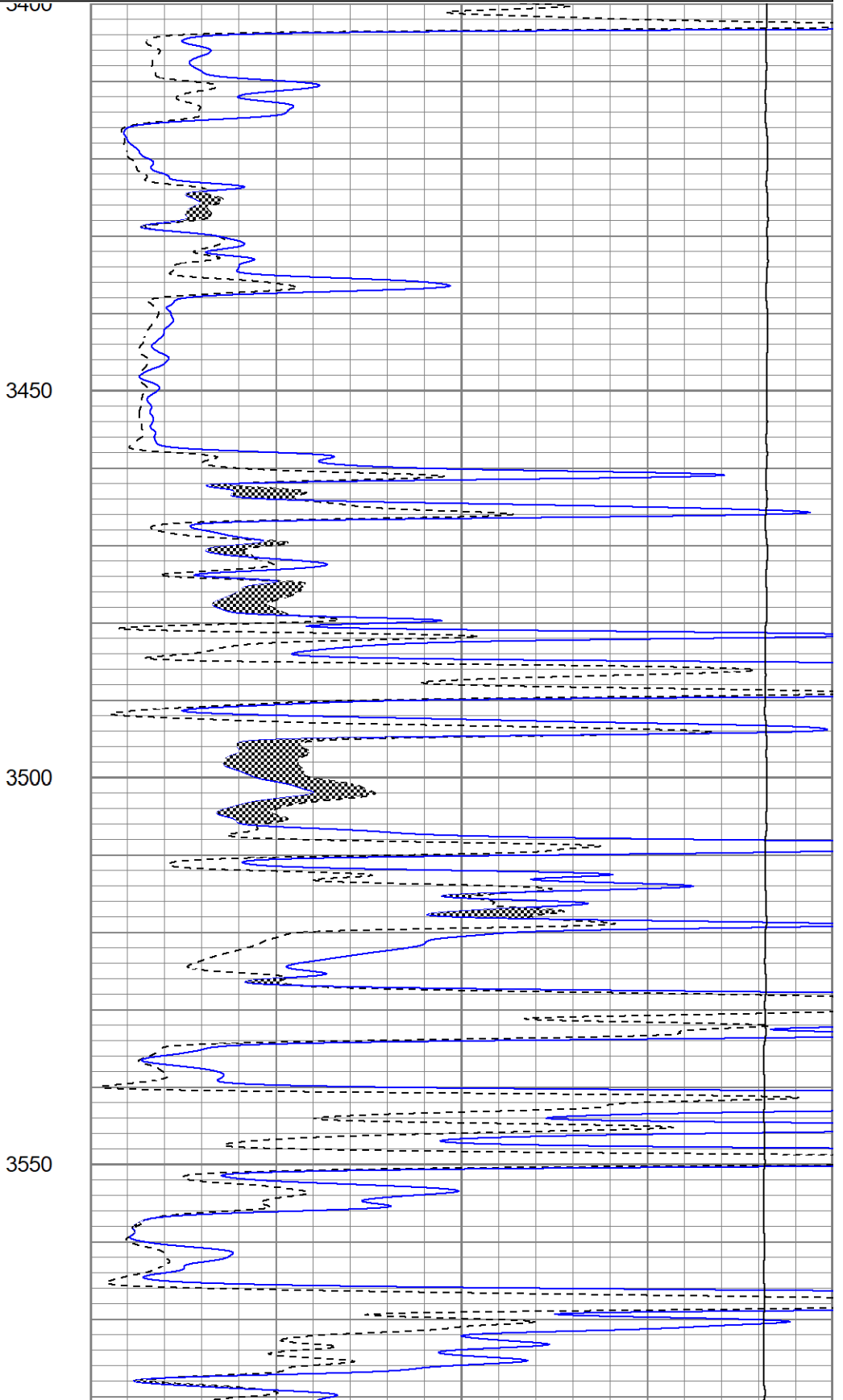
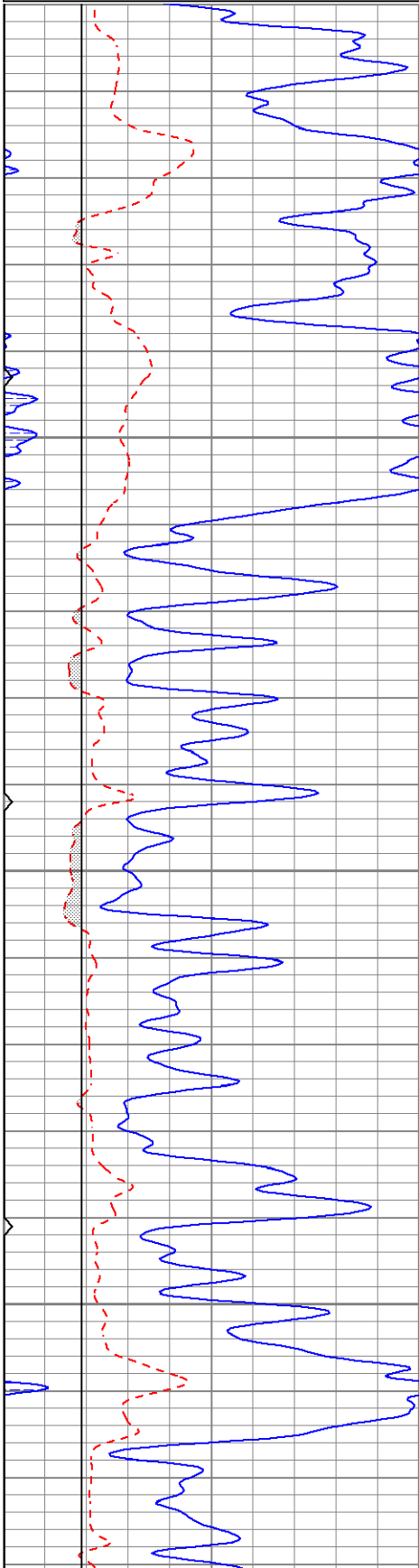


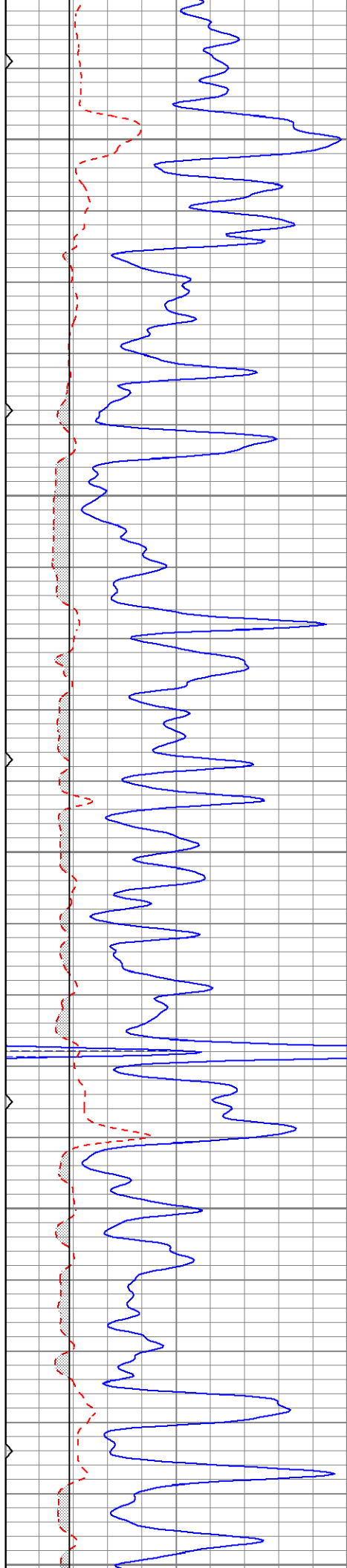
MAIN PASS

Database File ppeightdaysaweek#1oh.db
 Dataset Pathname pass6.1
 Presentation Format kml
 Dataset Creation Tue Jul 26 15:06:12 2022
 Charted by Depth in Feet scaled 1:240

0	GR (GAPI)	150
6	MCAL (in)	16
6	BOREID (in)	16
0	MINMK	50

0	MN 2" (Ohm-m)	20
0	MI 1" (Ohm-m)	20
10000	LTEN (lb)	0





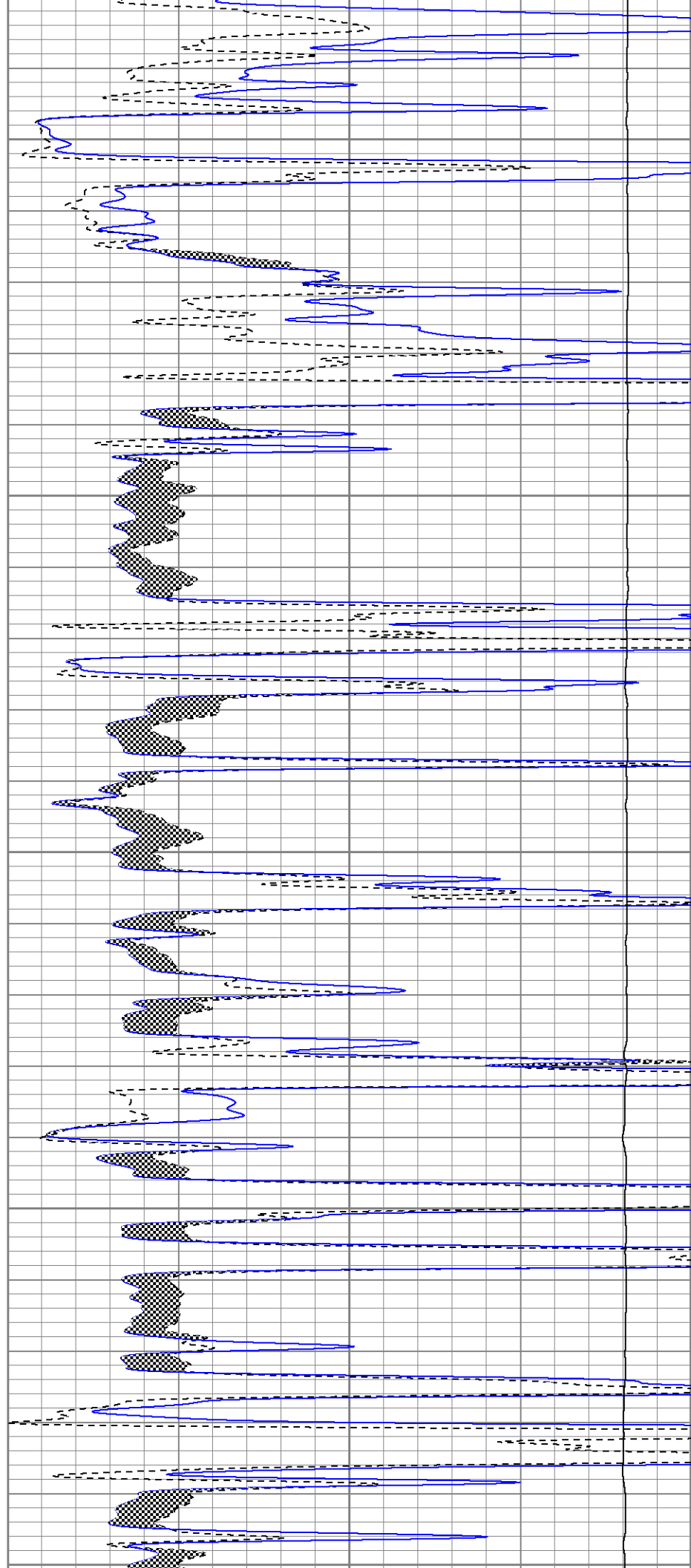
3600

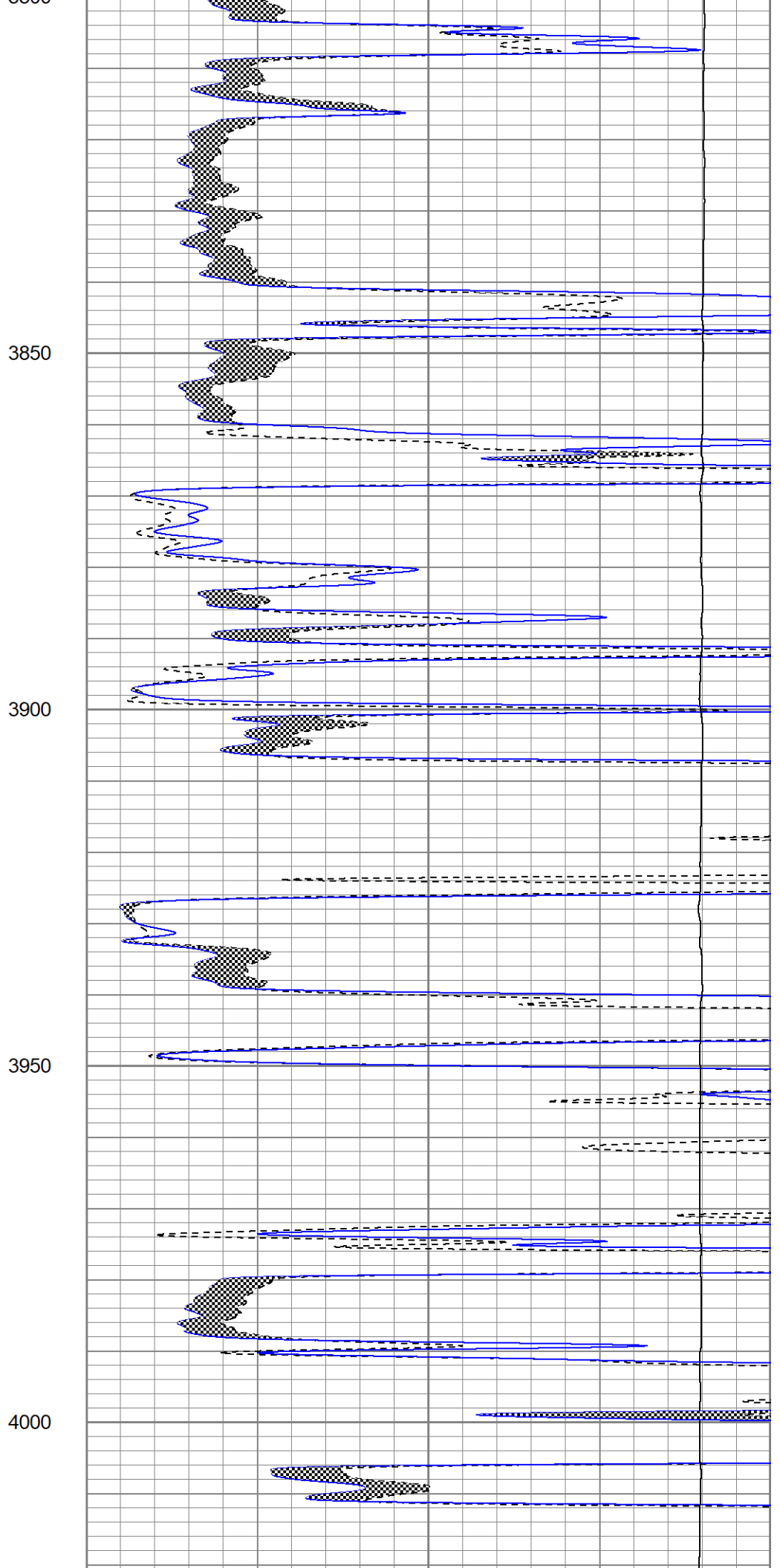
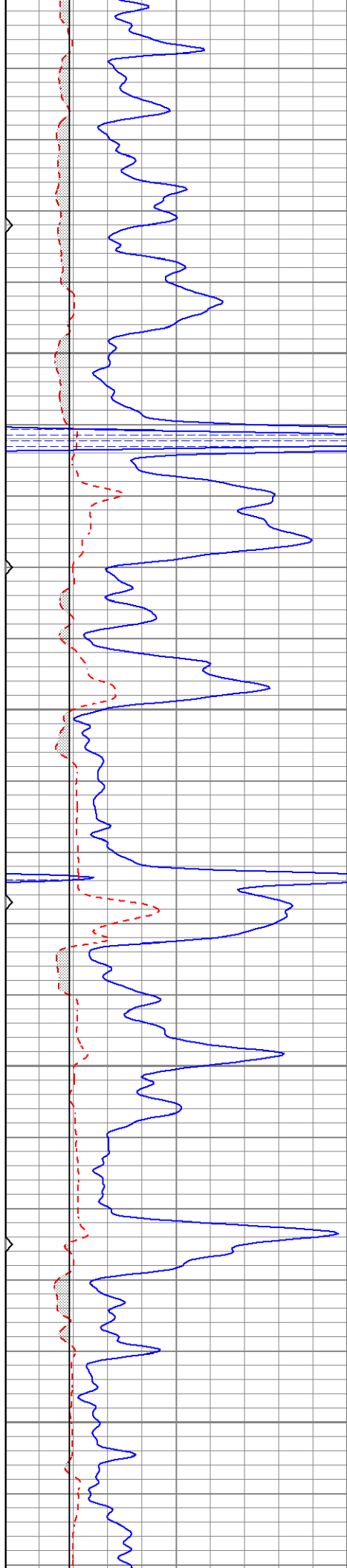
3650

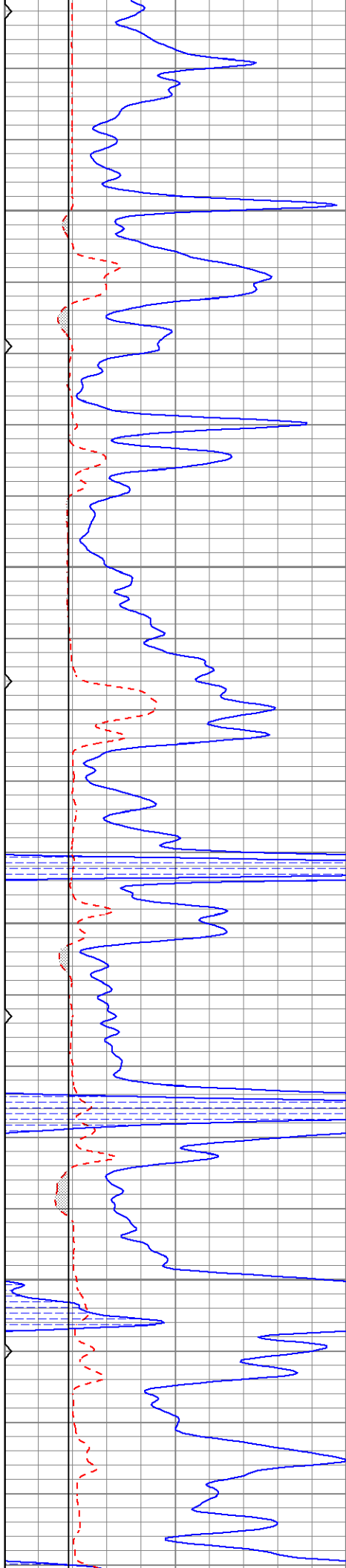
3700

3750

3800





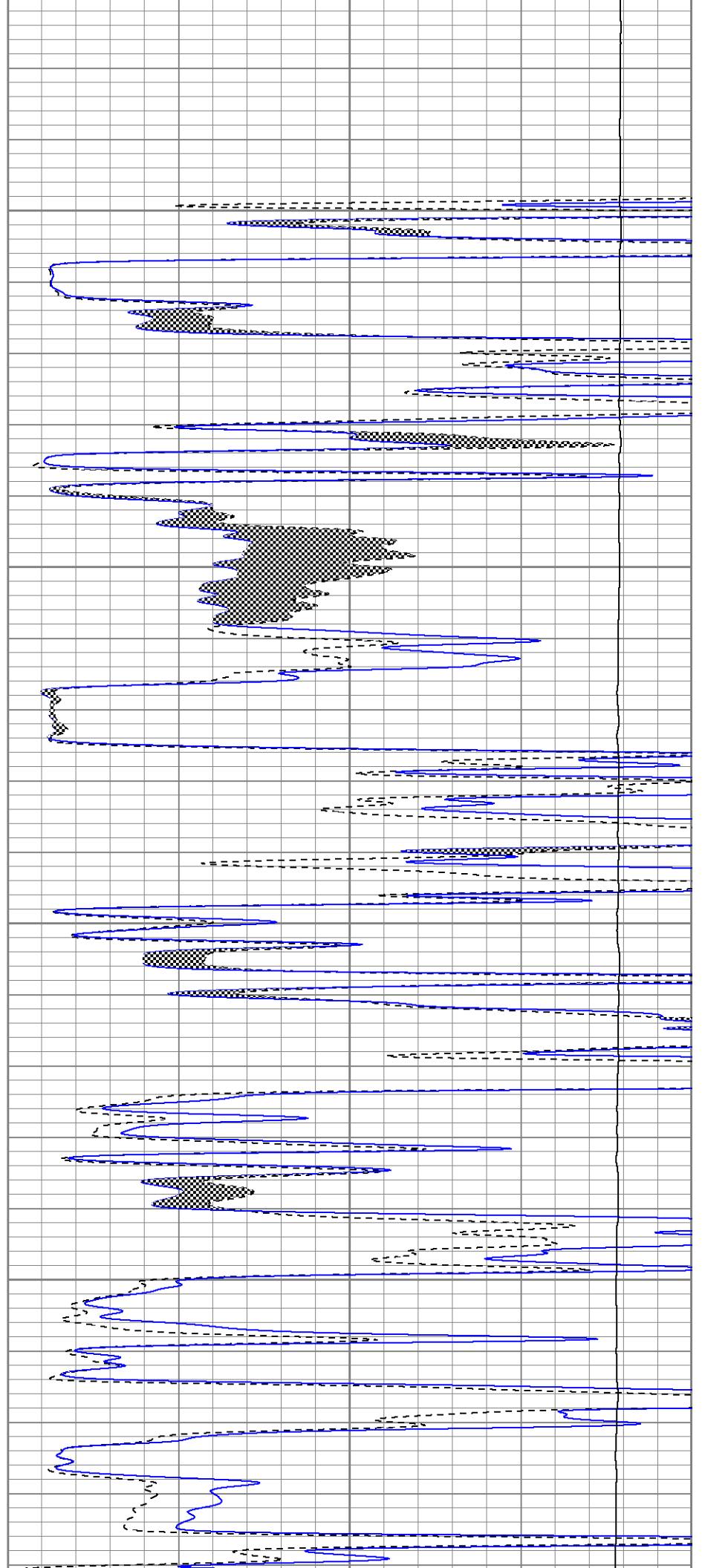


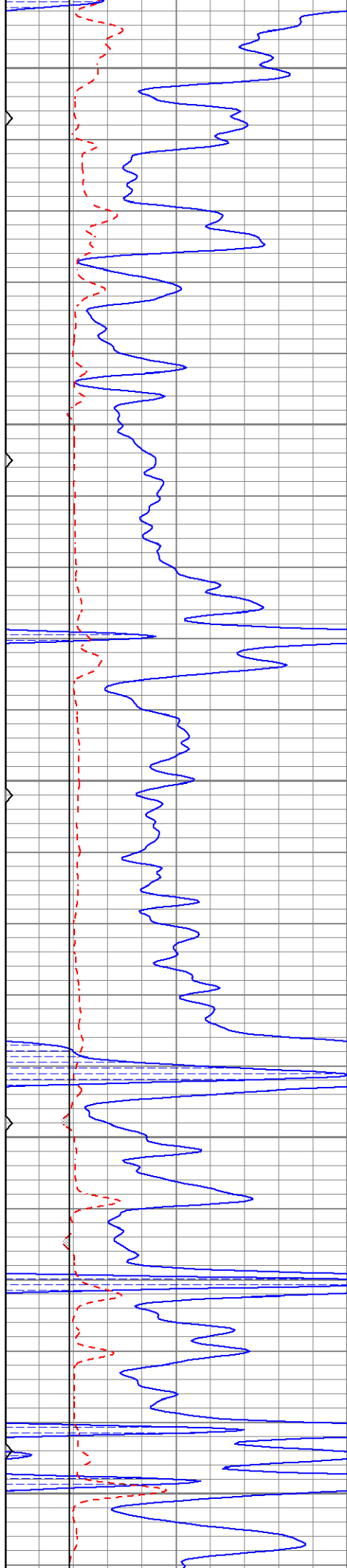
4050

4100

4150

4200





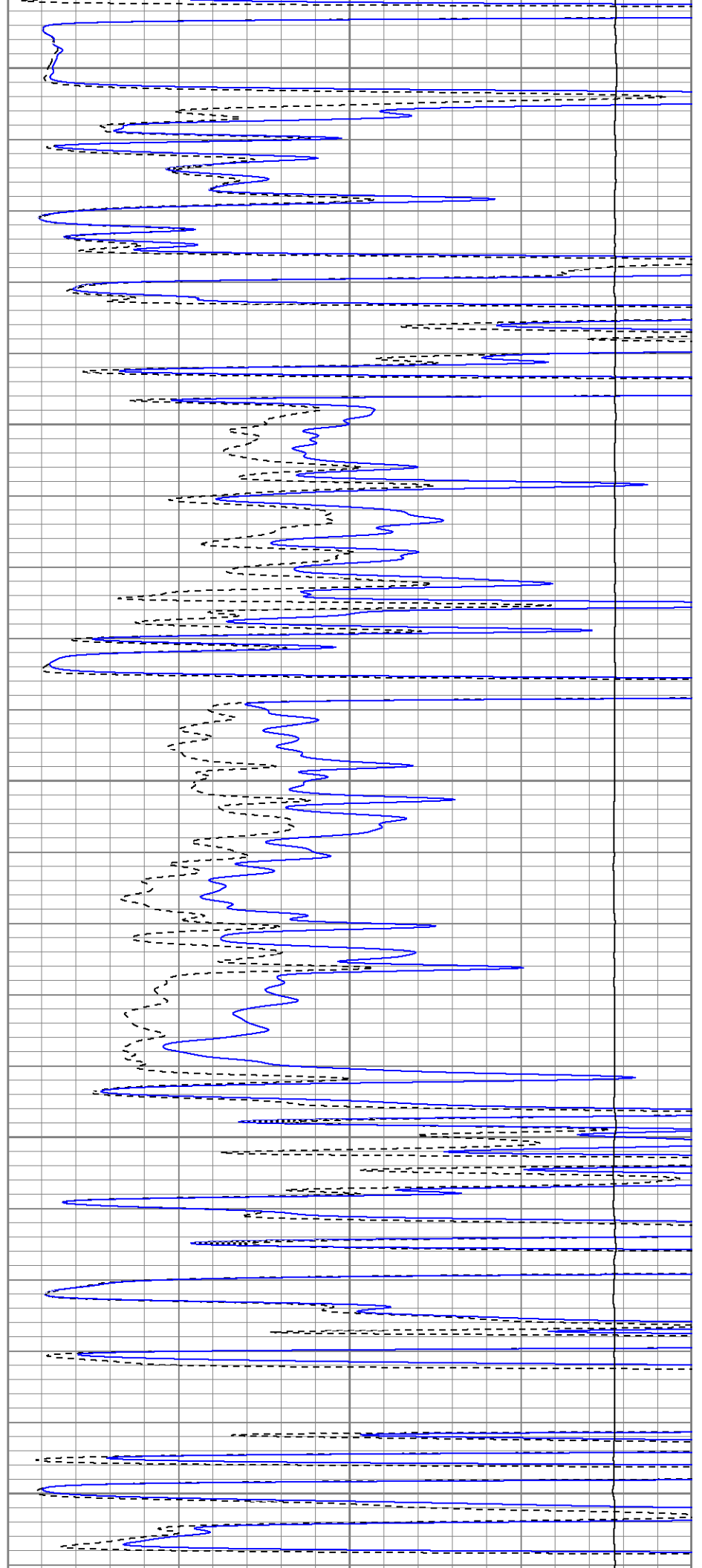
4250

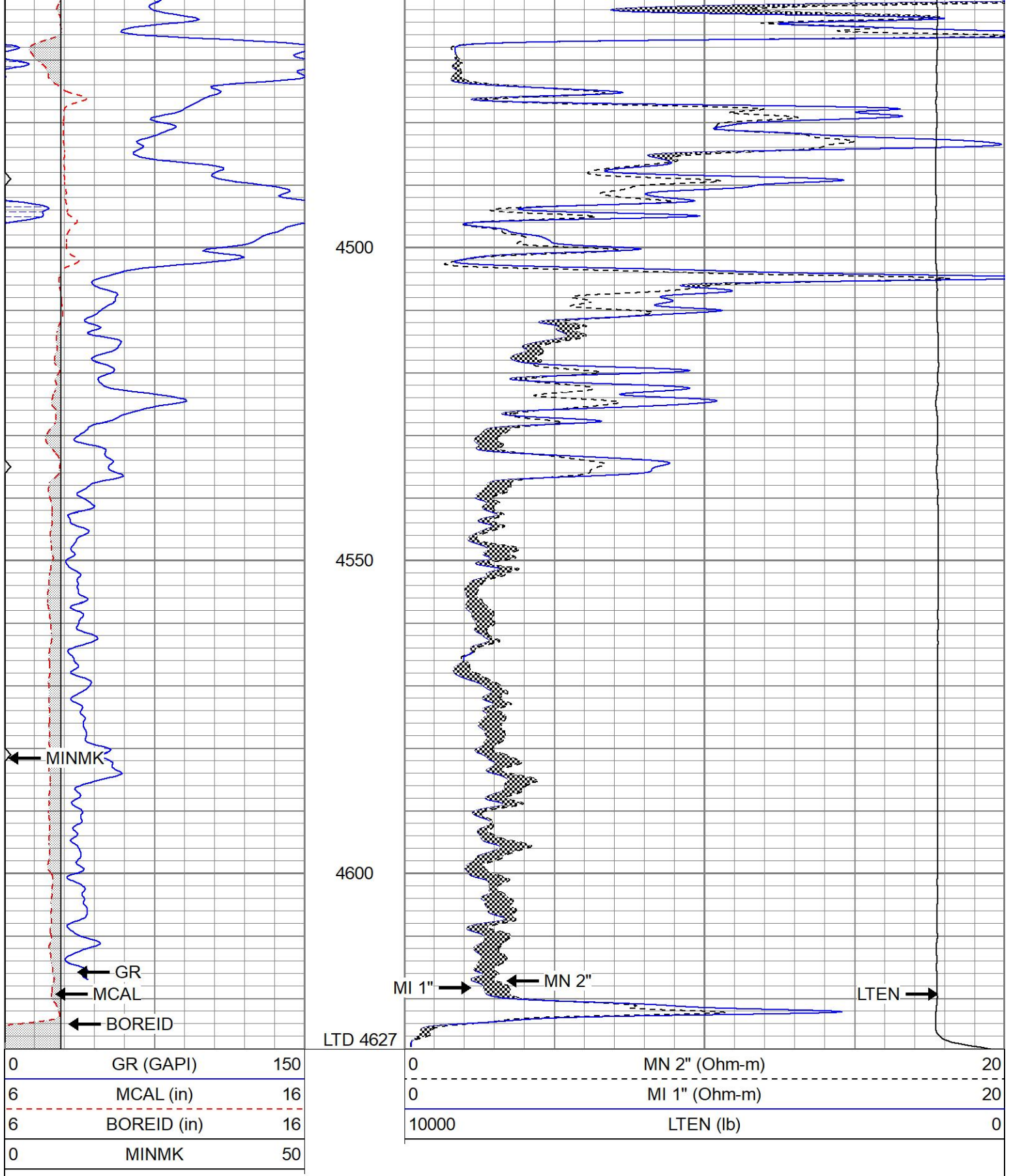
4300

4350

4400

4450

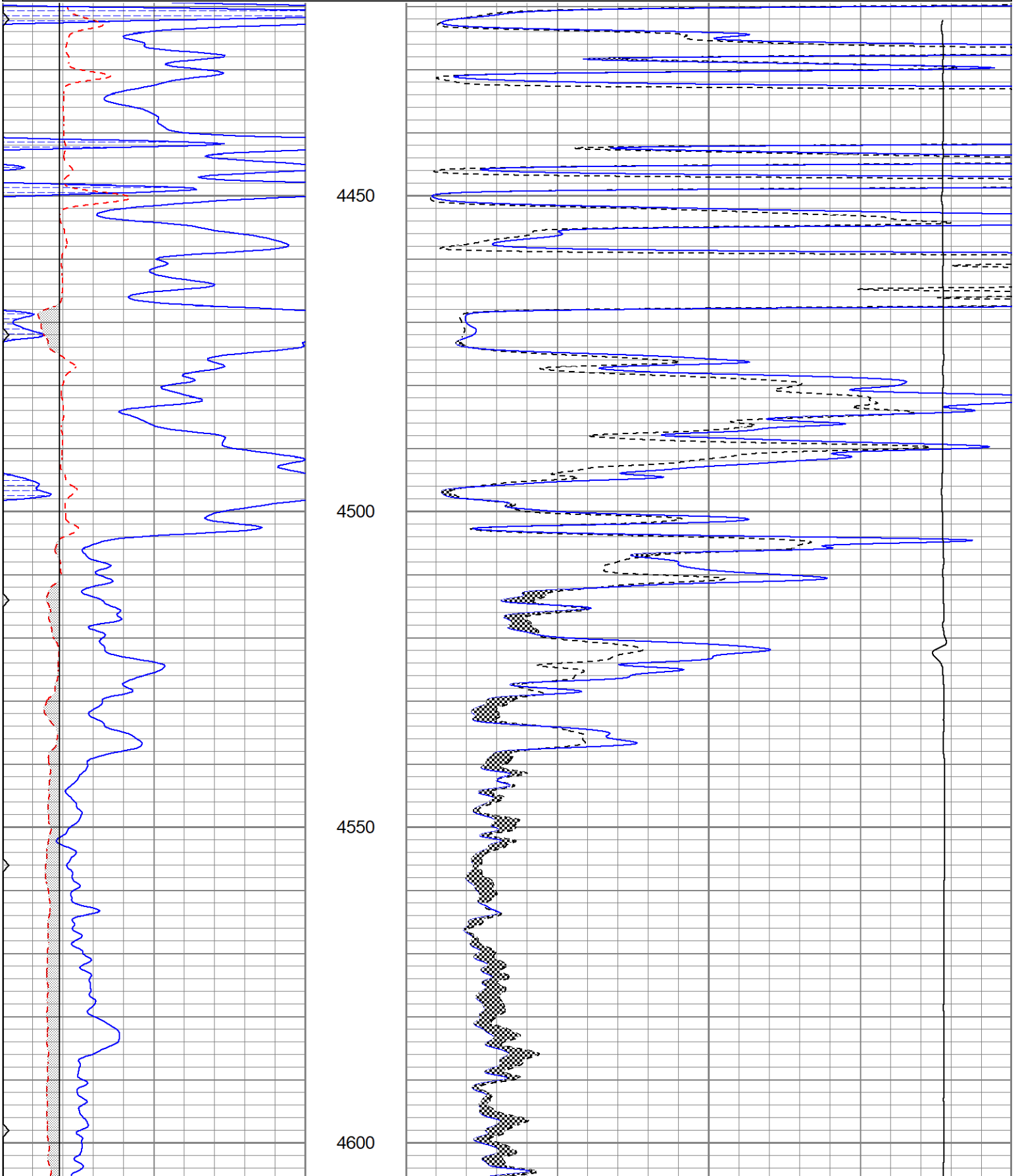


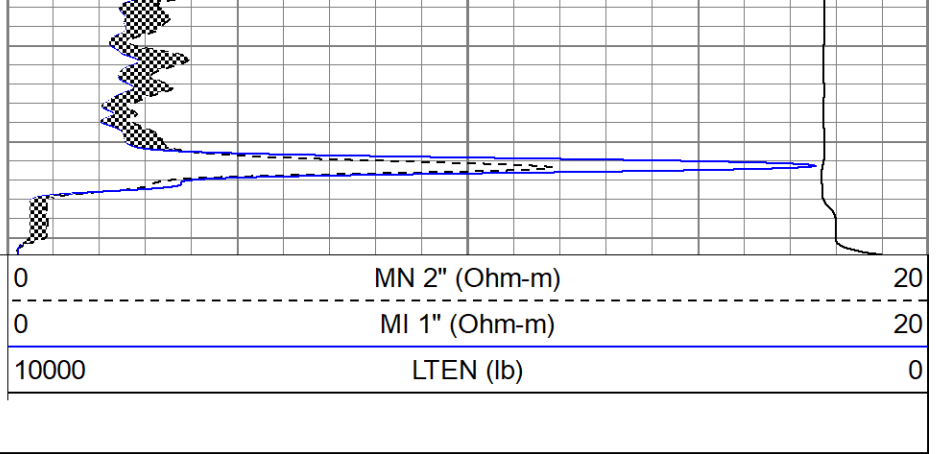
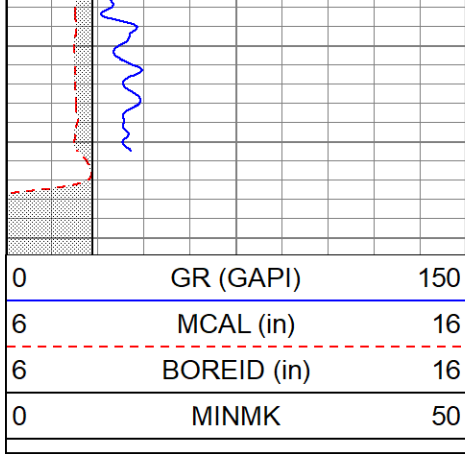


REPEAT SECTION

0	GR (GAPI)	150
6	MCAL (in)	16
6	BOREID (in)	16
0	MINMK	50

0	MN 2" (Ohm-m)	20
0	MI 1" (Ohm-m)	20
10000	LTEN (lb)	0





Calibration Report

Database File ppeightdaysaweek#1oh.db
 Dataset Pathname pass5.1
 Dataset Creation Tue Jul 26 15:08:14 2022

Microlog Calibration Report

Serial-Model: 1600-Pengo
 Performed: Tue Jul 26 09:41:43 2022

	Readings			References			Results	
	Zero	Cal		Zero	Cal		m	b
Normal	-0.0097	0.4867	V	0.0000	10.0000	Ohm-m	20.1436	0.1955
Inverse	-0.0140	0.6397	V	0.0000	10.0000	Ohm-m	15.2990	0.2136
Caliper	3.2319	6.4483	V	8.0000	15.0000	in	2.1364	1.0662

Gamma Ray Calibration Report

Serial Number: 2001
 Tool Model: OH
 Performed: Wed Jun 15 13:37:15 2022

Calibrator Value: 1.0 GAPI

Background Reading: 0.0 cps
 Calibrator Reading: 1.0 cps

Sensitivity: 0.8000 GAPI/cps