



MICRO LOG

Company MAI OIL OPERATIONS, INC.
 Well S&S A UNIT #1
 Field KRAFT-PRUSA
 County RUSSELL State KANSAS

Location: API #: 15-167-24125-0000
 2817' FNL & 1202' FEL
 NW - NW - NE - SE
 SEC 36 TWP 15S RGE 12W
 Permanent Datum GROUND LEVEL Elevation 1850
 Log Measured From KELLY BUSHING 10' A.G.L.
 Drilling Measured From KELLY BUSHING
 Other Services CDL/CNL DIL
 Elevation K.B. 1860
 D.F. 1858
 G.L. 1850

Date	7/20/22
Run Number	ONE
Depth Driller	3410
Depth Logger	3412
Bottom Logged Interval	3410
Top Log Interval	2600
Casing Driller	8 5/8" @ 729
Casing Logger	729
Bit Size	7 7/8
Type Fluid in Hole	CHEMICAL MUD
Density / Viscosity	9.0/49
PH / Fluid Loss	10.0/8.0
Source of Sample	FLOWLINE
Rm @ Meas. Temp	.800 @ 80F
Rmt @ Meas. Temp	.600 @ 80F
Rmc @ Meas. Temp	.960 @ 80F
Source of Rmf / Rmc	MEASUREMENT
Rm @ BHT	.577 @ 111F
Time Circulation Stopped	4 HOURS
Time Logger on Bottom	4:30 P.M.
Maximum Recorded Temperature	111F
Equipment Number	3802
Location	HAYS, KANSAS
Recorded By	COLE ROBBEN
Witnessed By	JIM MUSGROVE

<<< Fold Here >>>

All interpretations are opinions based on inferences from electrical or other measurements and we cannot and do not guarantee the accuracy or correctness of any interpretation, and we shall not, except in the case of gross or willful negligence on our part, be liable or responsible for any loss, costs, damages, or expenses incurred or sustained by anyone resulting from any interpretation made by any of our officers, agents or employees. These interpretations are also subject to our general terms and conditions set out in our current Price Schedule.

Comments

THANK YOU FOR USING ELI WIRELINE SERVICES, HAYS, KS. (785) 628-6395

DIRECTIONS:

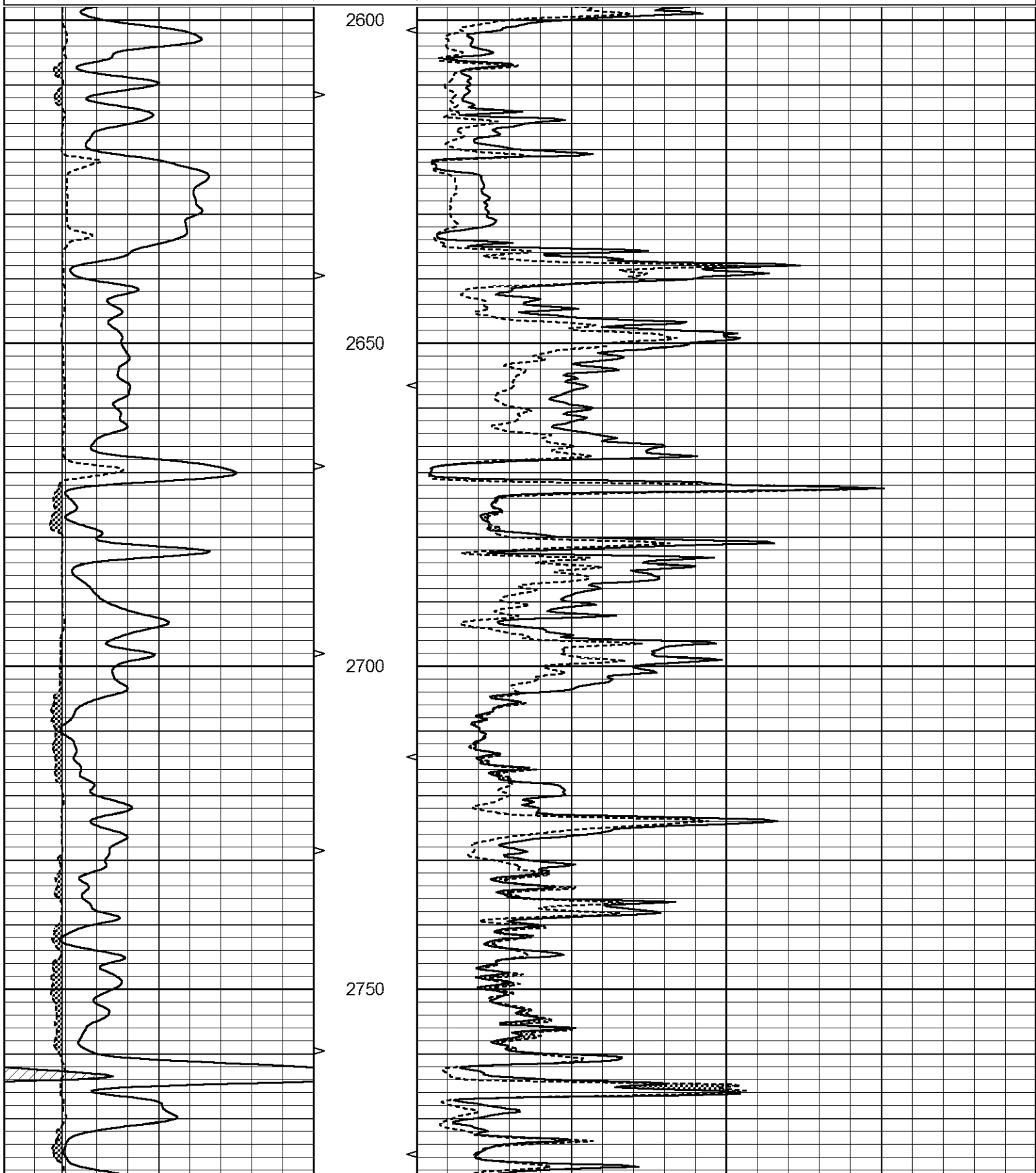
FROM DUBUQUE CHURCH GO 1 MILE NORTH, 1 MILE EAST, SOUTH INTO THROUGH ORANGE GA

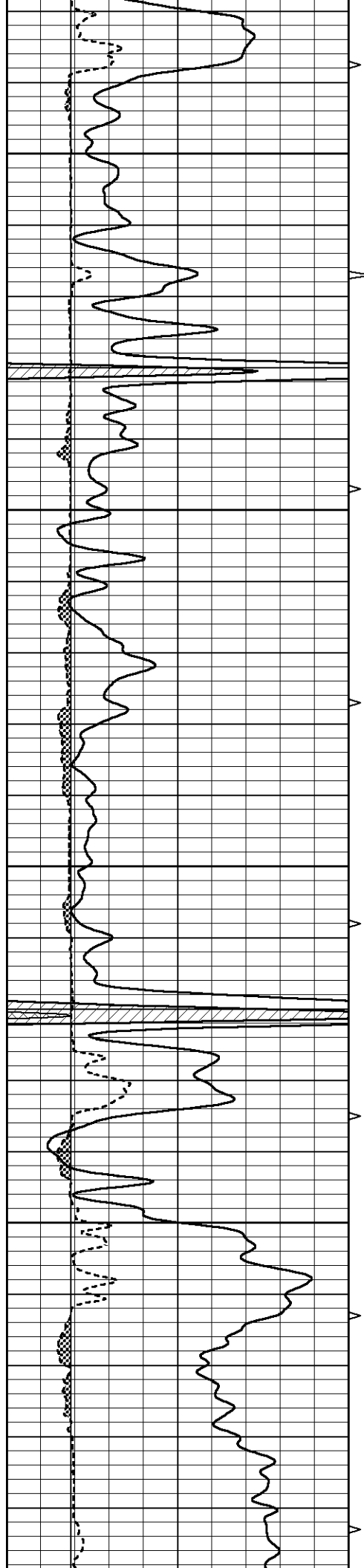


MAIN SECTION

Database File 6760ddn.db
 Dataset Pathname pass10.20
 Presentation Format _micro
 Dataset Creation Wed Jul 20 17:43:36 2022
 Charted by Depth in Feet scaled 1:240

0	GAMMA RAY (GAPI)	150	ABHV	0	MEL1.5 (Ohm-m)	40
6	CALIPER (in)	16	10 (ft3)	0 0	MEL2.0 (Ohm-m)	40
			TBHV			
			0 (ft3)	10		



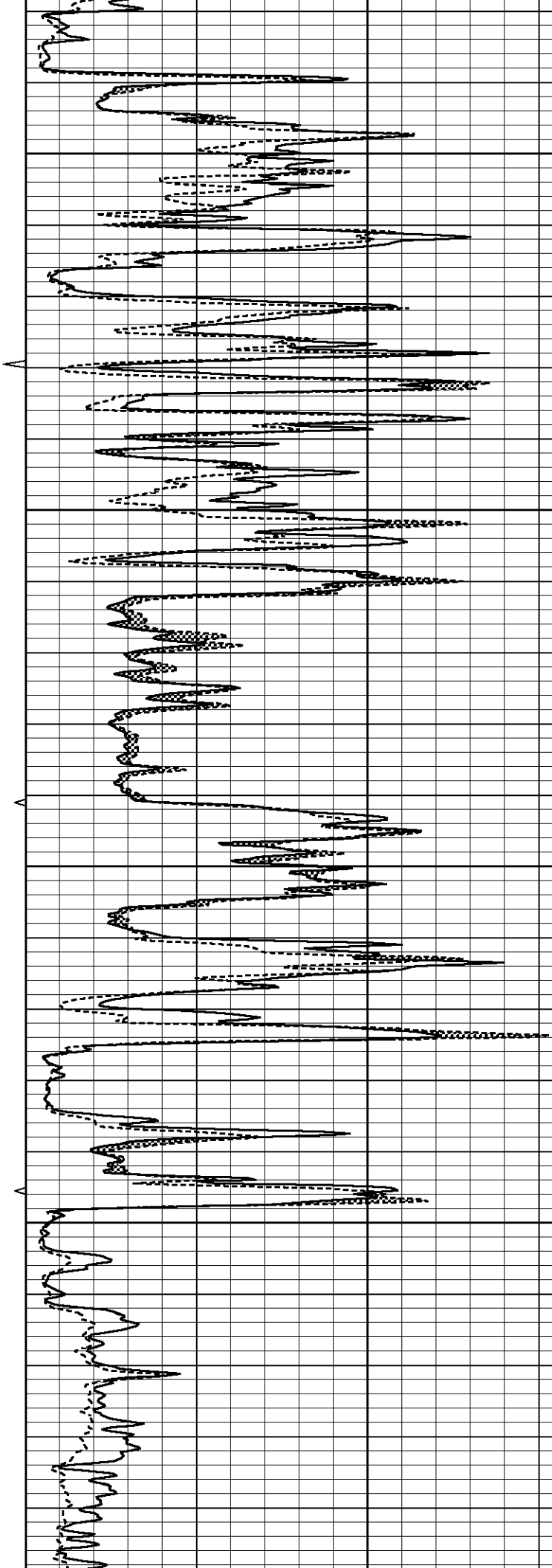


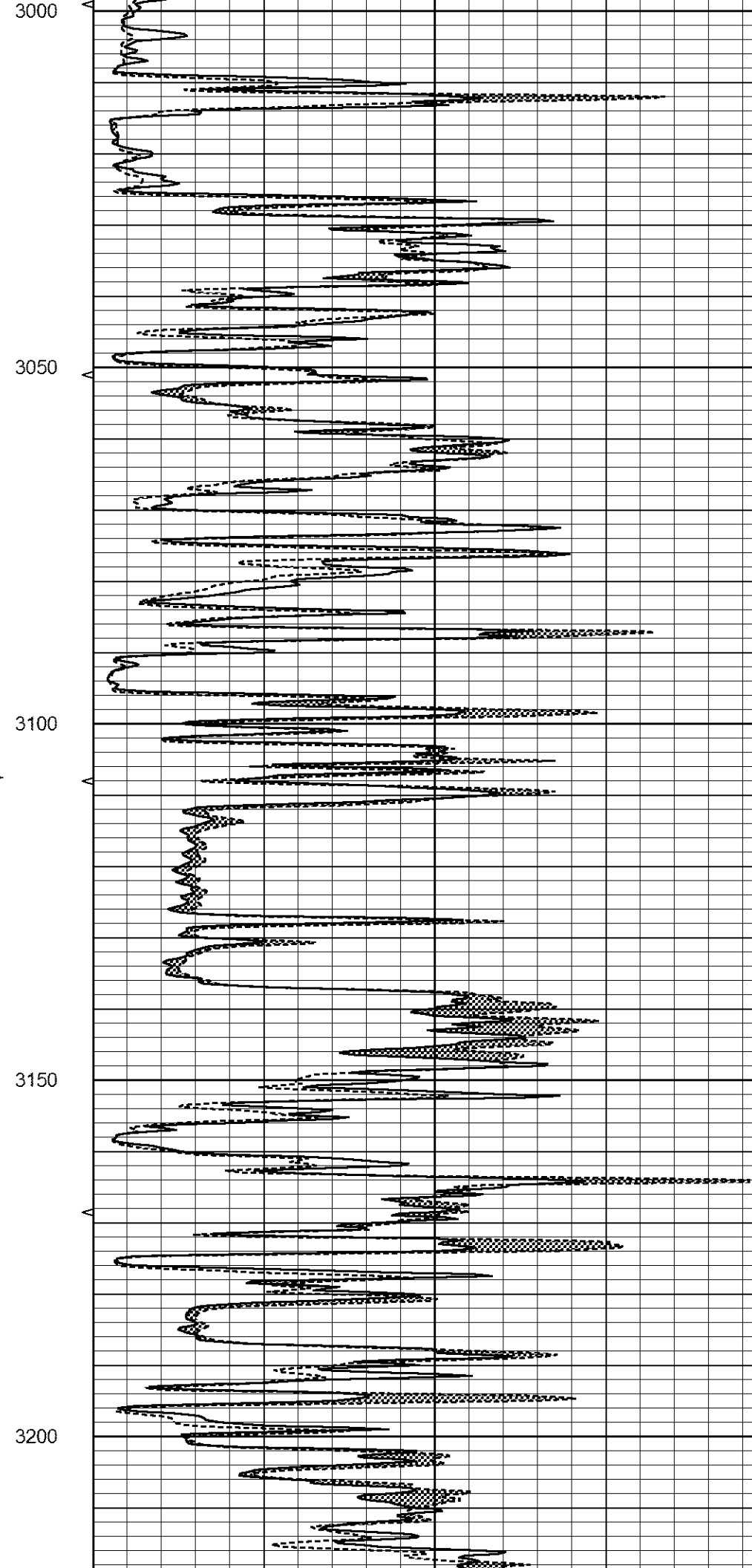
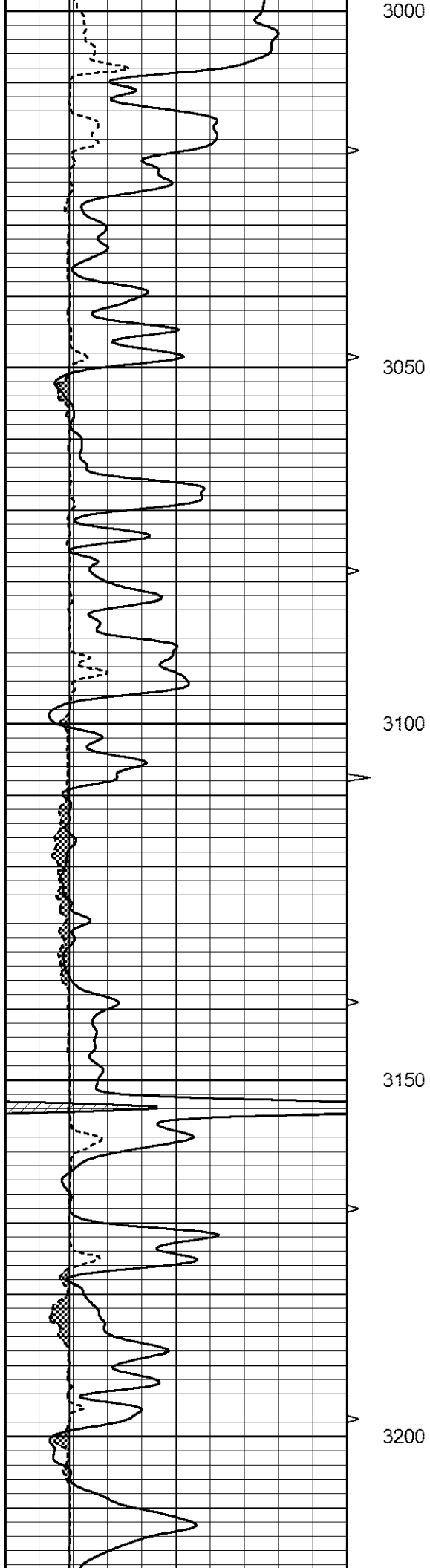
2800

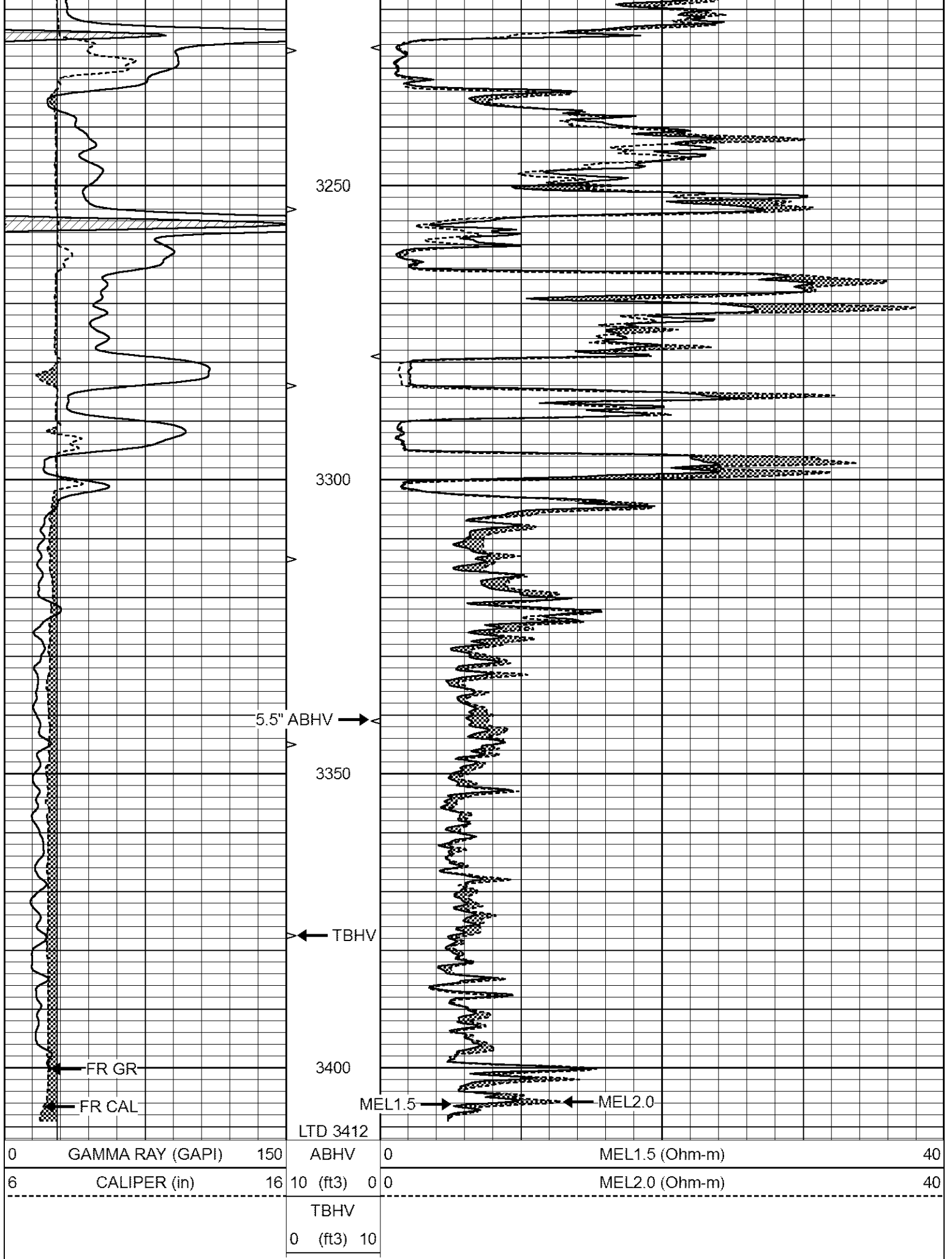
2850

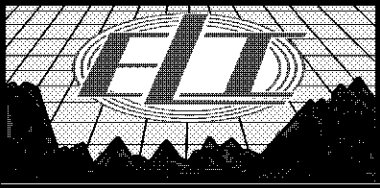
2900

2950





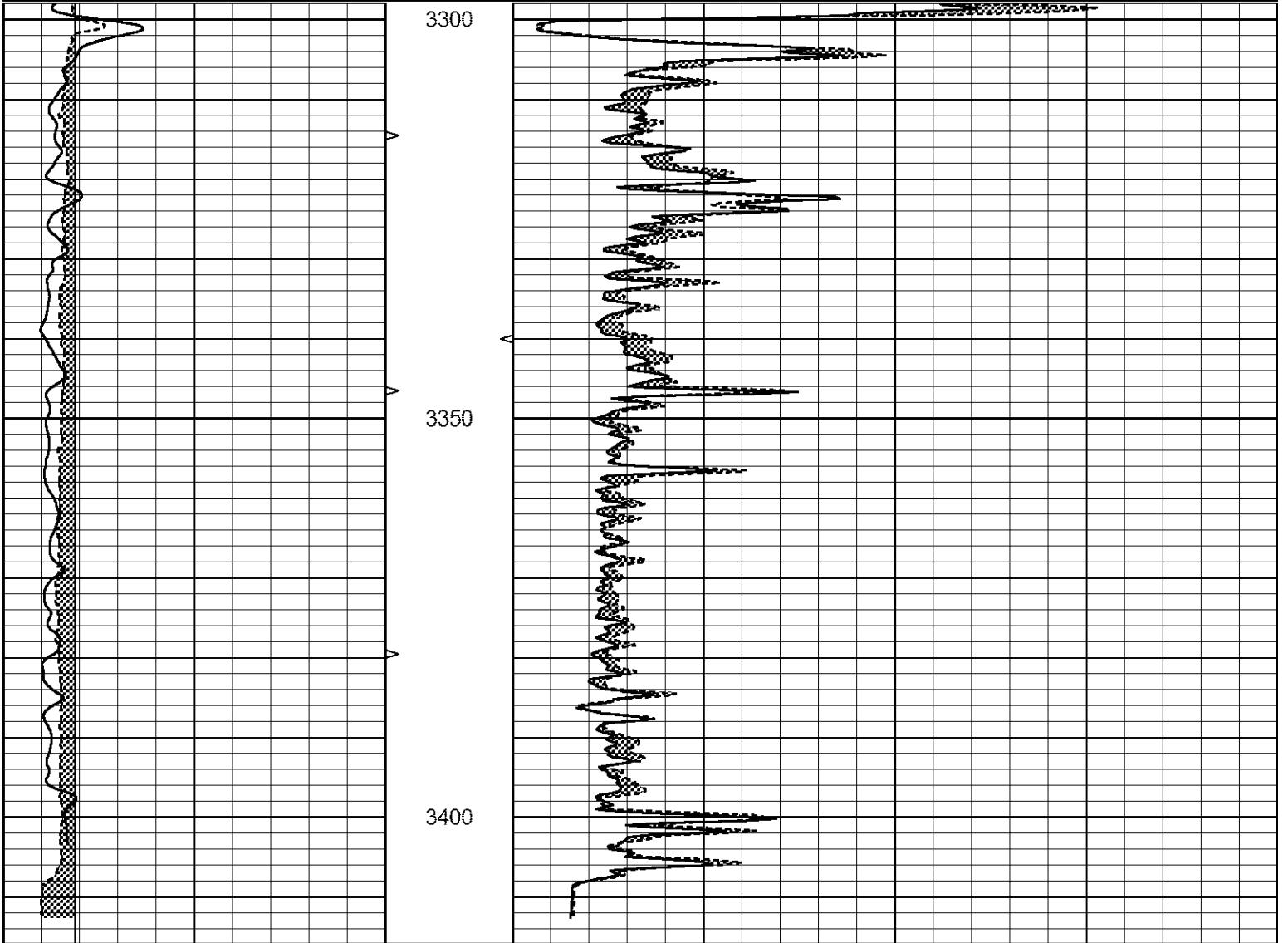




REPEAT SECTION

Database File 6760ddn.db
 Dataset Pathname pass9.1
 Presentation Format _micro
 Dataset Creation Wed Jul 20 17:47:31 2022
 Charted by Depth in Feet scaled 1:240

0	GAMMA RAY (GAPI)	150	ABHV	0	MEL1.5 (Ohm-m)	40
6	CALIPER (in)	16	10 (ft3)	0	MEL2.0 (Ohm-m)	40
			TBHV			
			0 (ft3)	10		



0	GAMMA RAY (GAPI)	150	ABHV	0	MEL1.5 (Ohm-m)	40
6	CALIPER (in)	16	10 (ft3)	0	MEL2.0 (Ohm-m)	40
			TBHV			
			0 (ft3)	10		

Calibration Report

Database File 6760ddn.db
 Dataset Pathname pass10.20
 Dataset Creation Wed Jul 20 17:43:36 2022

MICRO_USR Calibration Report

Serial Number: 070911
 Tool Model: ProbeL
 Performed: Mon Jul 18 22:18:37 2022

Caliper Calibration: Gain=4.500 Offset=0.500
 References Low Cal High Cal
 8.000 14.000
 Readings 1.451 3.049

1.5" Calibration: Gain=19.250 Offset=0.000
 References Low Cal High Cal
 0.000 20.000
 Readings 0.004 0.843

2" Calibration: Gain=16.500 Offset=0.100
 References Low Cal High Cal
 0.000 20.000
 Readings 0.021 0.810

Microlog Calibration Report

Serial-Model: 070911-ProbeL
 Performed: Sat May 14 04:48:25 2022

	Readings			References			Results	
	Zero	Cal		Zero	Cal		m	b
Normal	0.0002	0.4836	V	0.0000	10.0000	Ohm-m	20.6908	-0.0051
Inverse	0.0018	0.6297	V	0.0000	10.0000	Ohm-m	15.9263	-0.0282
Caliper	0.0000	1.0000	V	0.0000	1.0000	in	1.0000	0.0000

Gamma Ray Calibration Report

Serial Number: 070558
 Tool Model: Probe1
 Performed: Sat Jul 02 05:55:58 2022

Calibrator Value: 1.0 GAPI

Background Reading: 0.0 cps
 Calibrator Reading: 1.0 cps

Sensitivity: 0.2600 GAPI/cps