



**COMPENSATED
DENSITY/NEUTRON
LOG**

Company MAI OIL OPERATIONS, INC.
Well S&S A UNIT #1
Field KRAFT-PRUSA
County RUSSELL State KANSAS

Location: API #: 15-167-24125-0000
2817' FNL & 1202' FEL
NW - NW - NE - SE
SEC 36 TWP 15S RGE 12W
Permanent Datum GROUND LEVEL Elevation 1850
Log Measured From KELLY BUSHING 10' A.G.L.
Drilling Measured From KELLY BUSHING
Other Services
DIL/MEL
Elevation
K.B. 1860
D.F. 1858
G.L. 1850

Date	7/20/22		
Run Number	ONE		
Depth Driller	3410		
Depth Logger	3412		
Bottom Logged Interval	3388		
Top Log Interval	2600		
Casing Driller	8 5/8" @ 729		
Casing Logger	729		
Bit Size	7 7/8		
Type Fluid in Hole	CHEMICAL MUD	CHLORIDES 5.000 PPM	
Density / Viscosity	9.0/49		
PH / Fluid Loss	10.0/8.0		
Source of Sample	FLOWLINE		
Rm @ Meas. Temp	.800 @ 80F		
Rmt @ Meas. Temp	.600 @ 80F		
Rmc @ Meas. Temp	.960 @ 80F		
Source of Rmf / Rmc	MEASUREMENT		
Rm @ BHT	.577 @ 111F		
Time Circulation Stopped	2 HOURS		
Time Logger on Bottom	2:30 P.M.		
Maximum Recorded Temperature	111F		
Equipment Number	3802		
Location	HAYS, KANSAS		
Recorded By	COLE ROBBEN		
Witnessed By	JIM MUSGROVE		

<<< Fold Here >>>

All interpretations are opinions based on inferences from electrical or other measurements and we cannot and do not guarantee the accuracy or correctness of any interpretation, and we shall not, except in the case of gross or willful negligence on our part, be liable or responsible for any loss, costs, damages, or expenses incurred or sustained by anyone resulting from any interpretation made by any of our officers, agents or employees. These interpretations are also subject to our general terms and conditions set out in our current Price Schedule.

Comments

THANK YOU FOR USING ELI WIRELINE SERVICES, HAYS, KS. (785) 628-6395

DIRECTIONS:

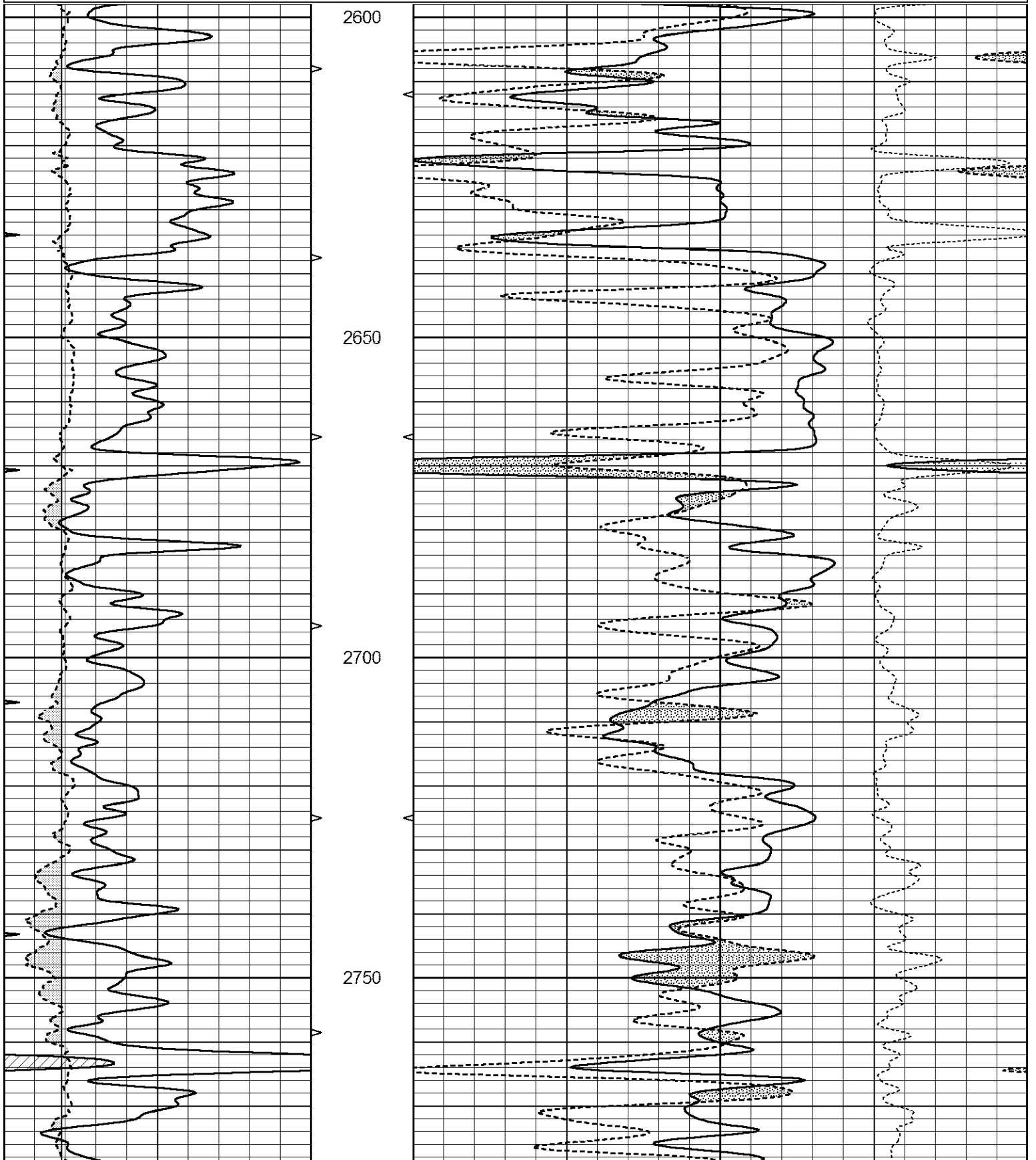
FROM DUBUQUE CHURCH GO 1 MILE NORTH, 1 MILE EAST, SOUTH INTO THROUGH ORANGE GA

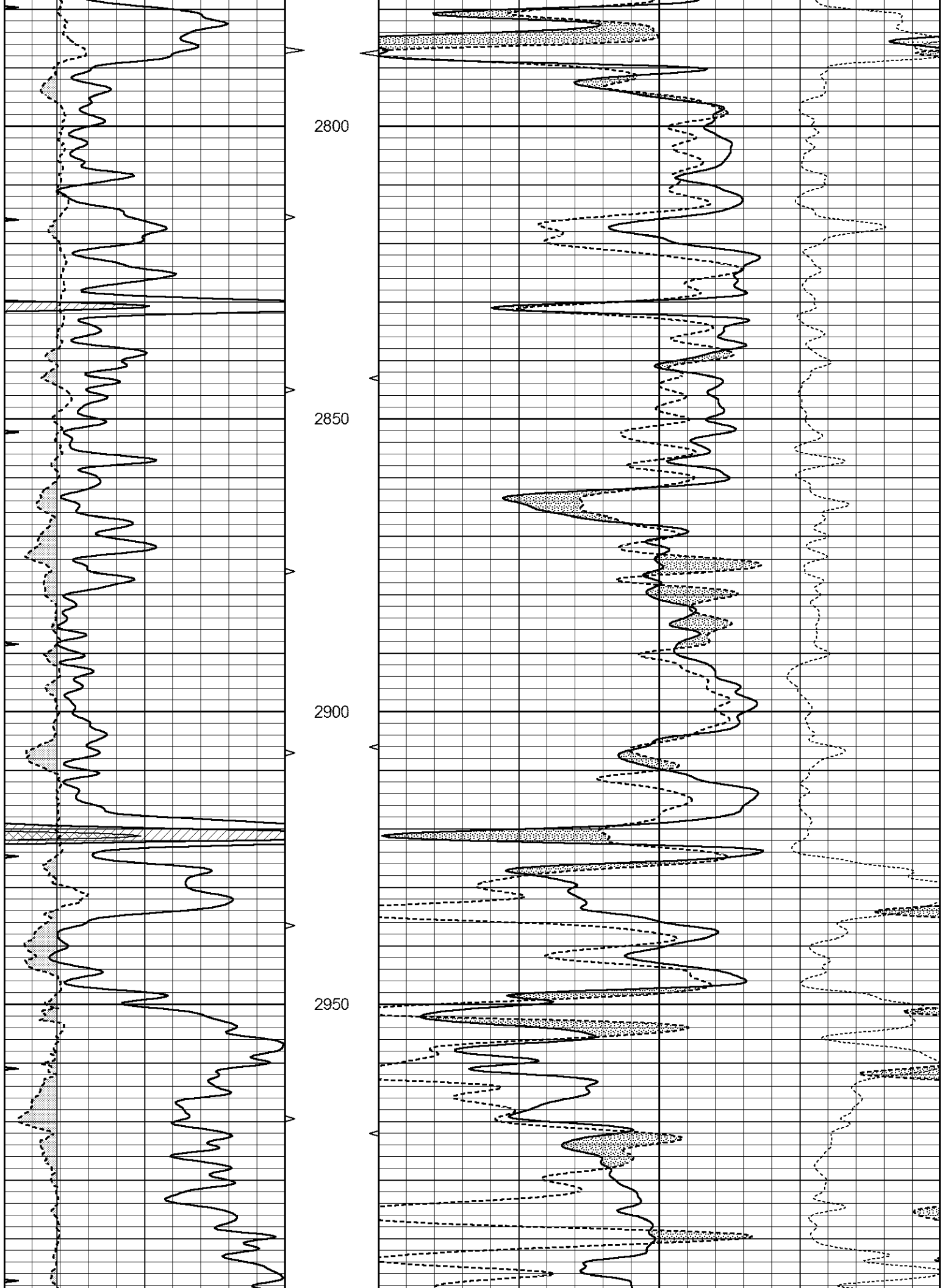


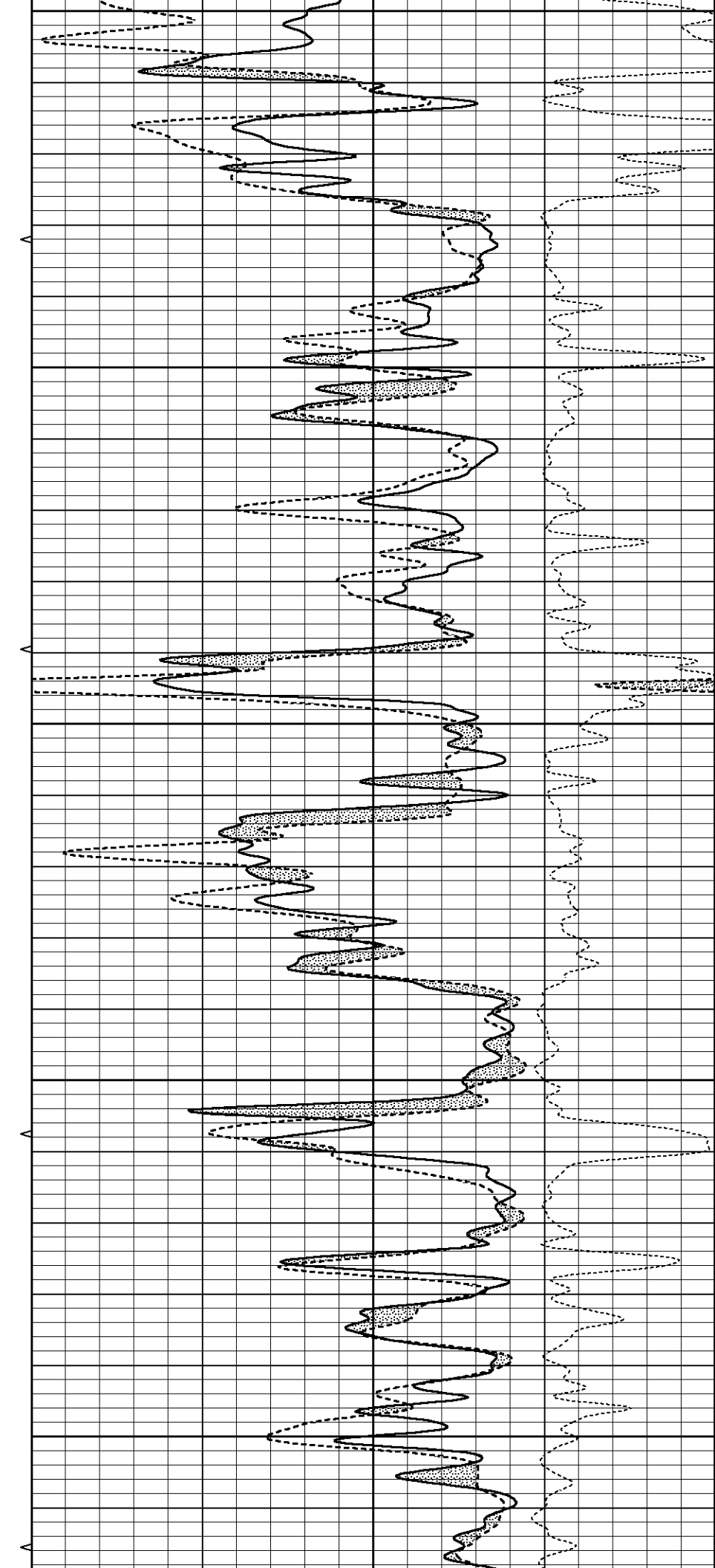
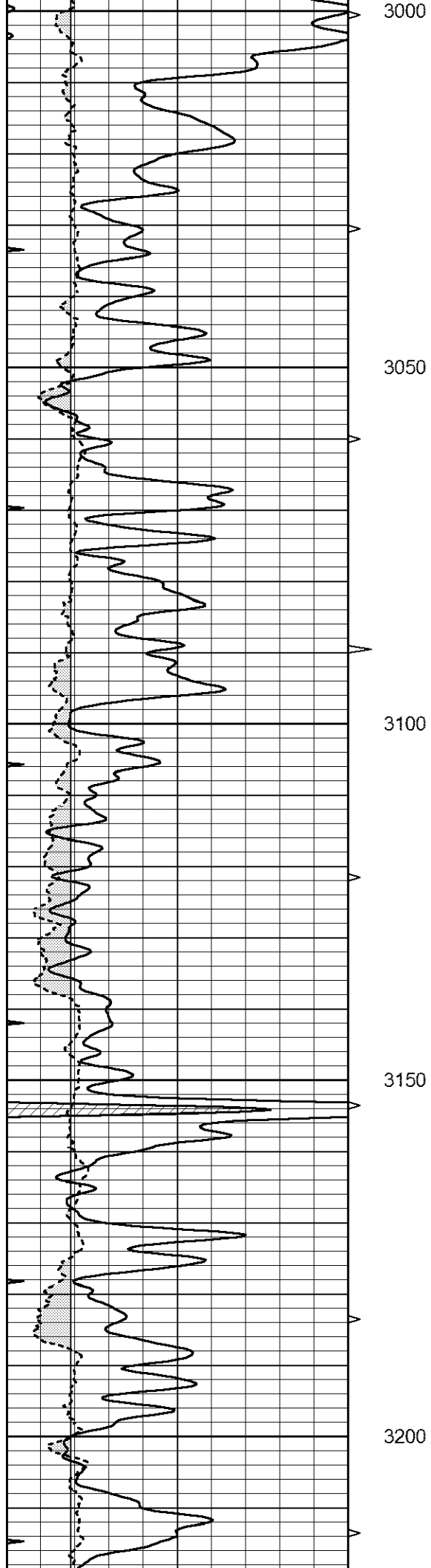
MAIN SECTION

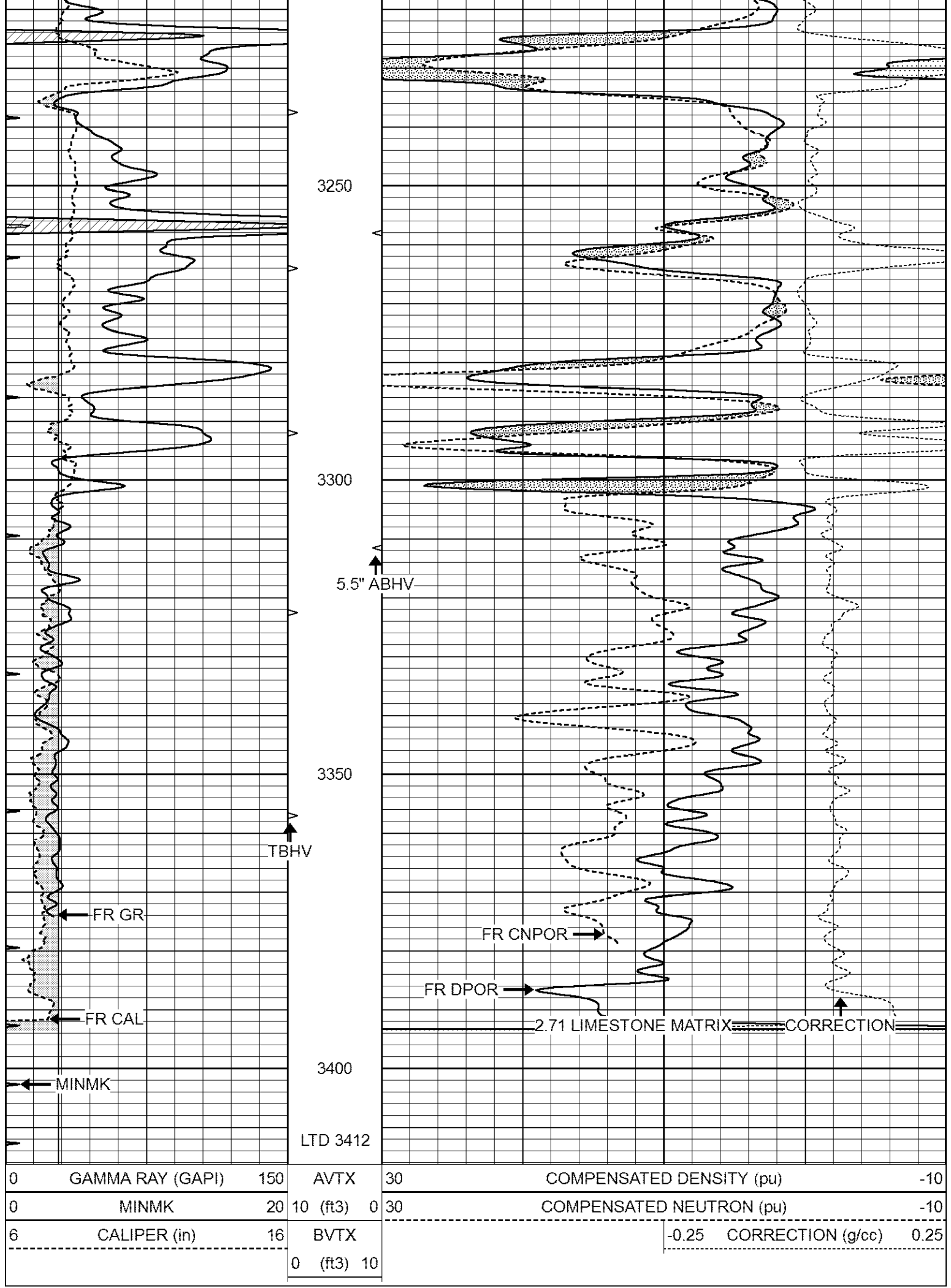
Database File 6760ddn.db
 Dataset Pathname pass4POR
 Presentation Format _den_neu
 Dataset Creation Wed Jul 20 16:04:19 2022
 Charted by Depth in Feet scaled 1:240

0	GAMMA RAY (GAPI)	150	AVTX	30	COMPENSATED DENSITY (pu)	-10
0	MINMK	20	10 (ft3) 0	30	COMPENSATED NEUTRON (pu)	-10
6	CALIPER (in)	16	BVTX		-0.25 CORRECTION (g/cc)	0.25
			0 (ft3) 10			

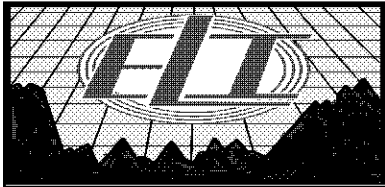








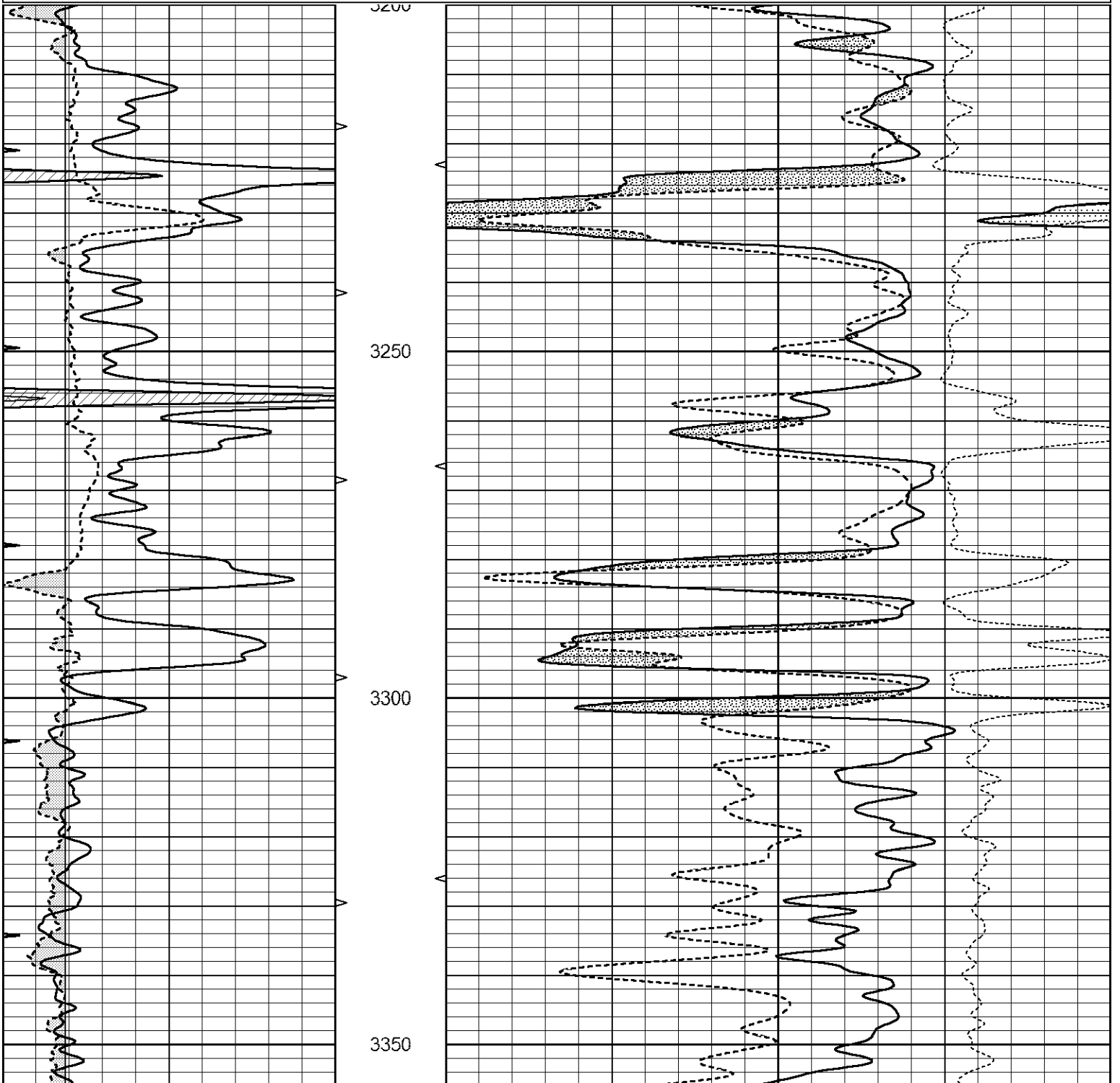
0	GAMMA RAY (GAPI)	150	AVTX	30	COMPENSATED DENSITY (pu)	-10		
0	MINMK	20	10 (ft3)	0	30	COMPENSATED NEUTRON (pu)	-10	
6	CALIPER (in)	16	BVTX			-0.25	CORRECTION (g/cc)	0.25
			0 (ft3)	10				

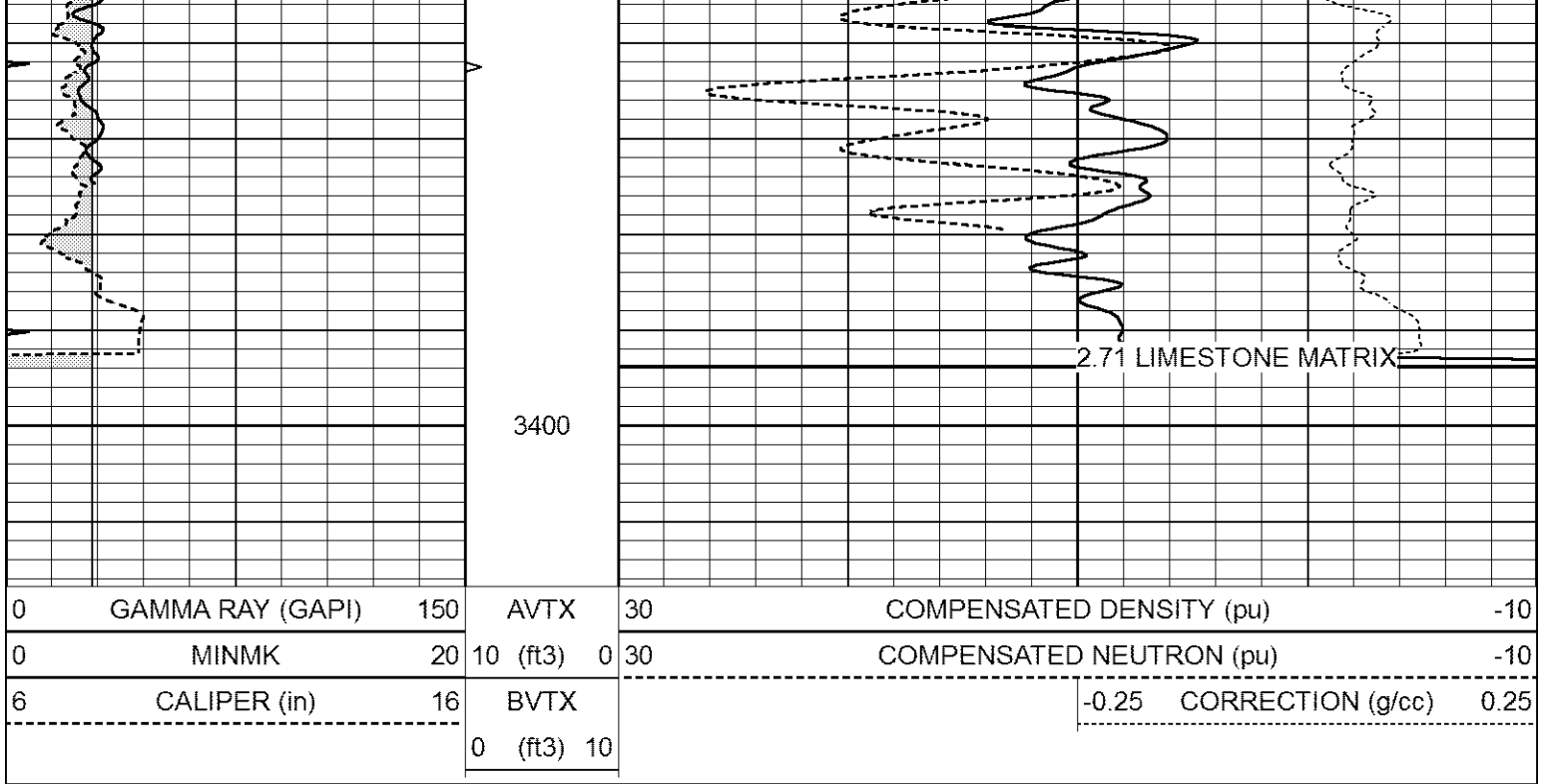


REPEAT LIMESTONE MATRIX

Database File 6760ddn.db
Dataset Pathname pass3.12
Presentation Format _den_neu
Dataset Creation Wed Jul 20 16:05:42 2022
Charted by Depth in Feet scaled 1:240

0	GAMMA RAY (GAPI)	150	AVTX	30	COMPENSATED DENSITY (pu)	-10
0	MINMK	20	10 (ft3) 0	30	COMPENSATED NEUTRON (pu)	-10
6	CALIPER (in)	16	BVTX		-0.25 CORRECTION (g/cc)	0.25
			0 (ft3) 10			

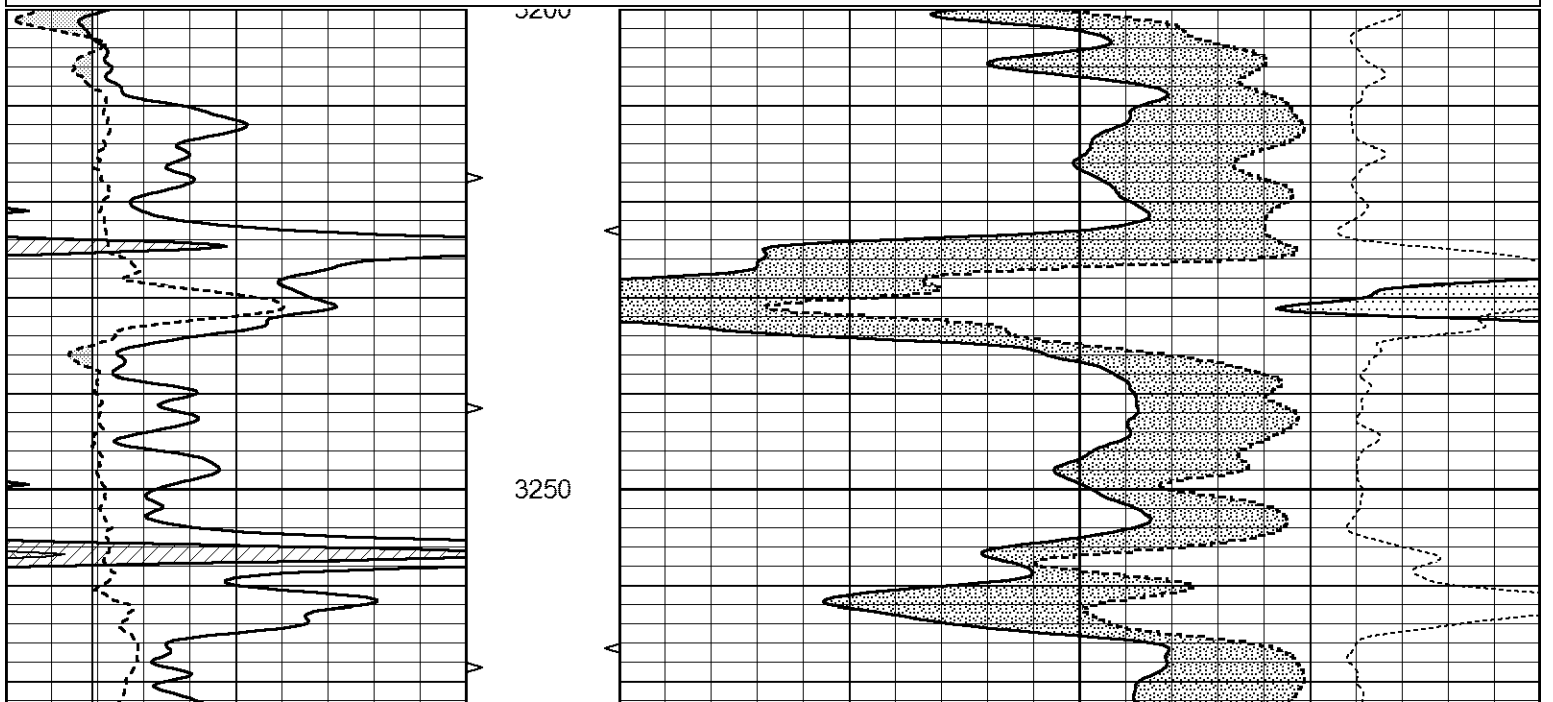


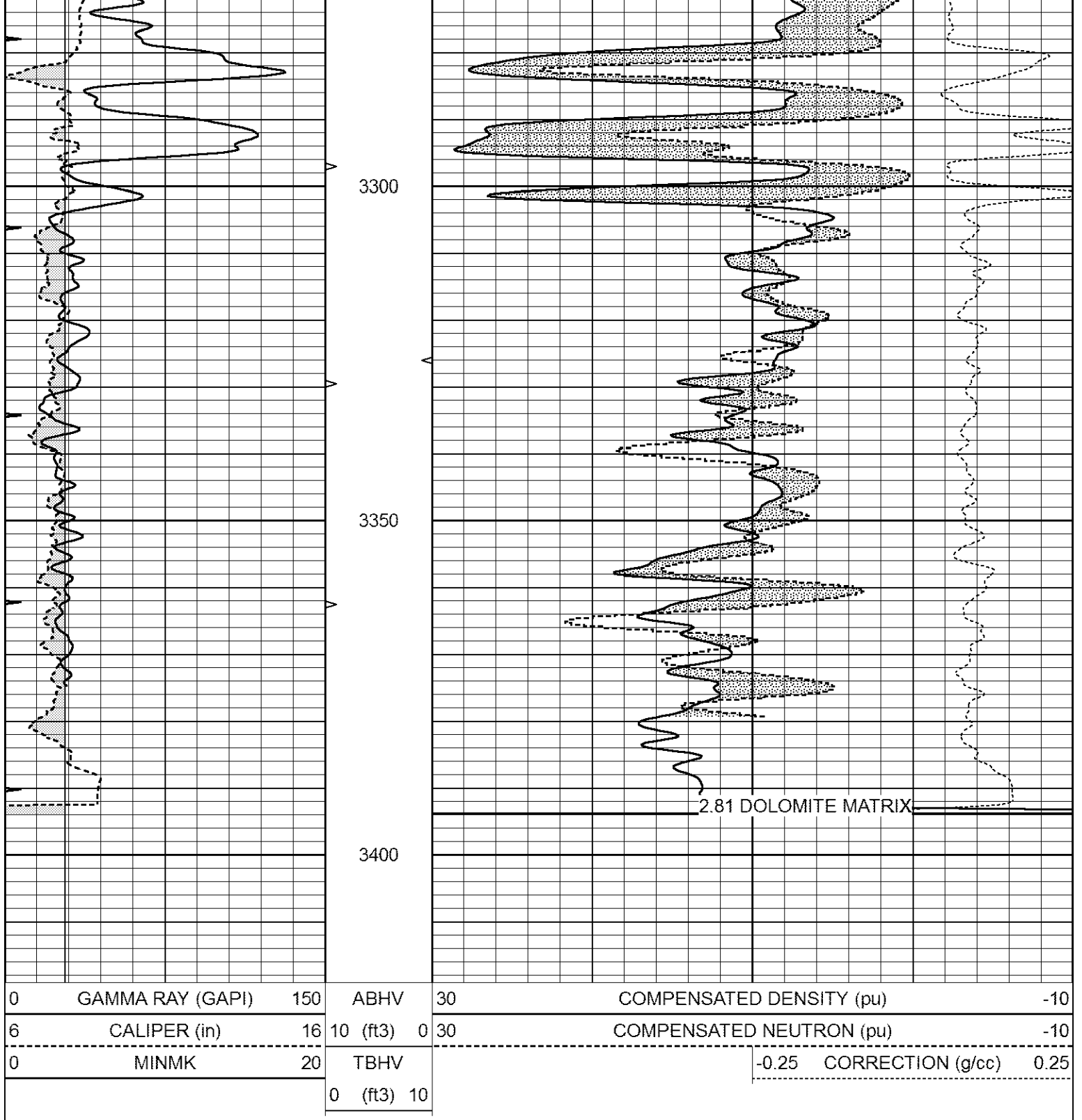


REPEAT DOLOMITE MATRIX

Database File 6760ddn.db
 Dataset Pathname pass3RD
 Presentation Format den_neu
 Dataset Creation Wed Jul 20 16:09:24 2022
 Charted by Depth in Feet scaled 1:240

0	GAMMA RAY (GAPI)	150	ABHV	30	COMPENSATED DENSITY (pu)	-10
6	CALIPER (in)	16	10 (ft3) 0	30	COMPENSATED NEUTRON (pu)	-10
0	MINMK	20	TBHV		-0.25 CORRECTION (g/cc)	0.25
			0 (ft3) 10			





Calibration Report

Database File 6760ddn.db
 Dataset Pathname pass4POR
 Dataset Creation Wed Jul 20 16:04:19 2022

Dual Induction Calibration Report

Serial-Model: FW1410-55-Probe
 Surface Cal Performed: Thu Jun 30 01:48:00 2022
 Downhole Cal Performed: Tue Feb 19 11:44:24 2019
 After Survey Verification Performed: Tue Feb 19 11:44:27 2019

Surface Calibration

Readings

References

Results

Loop:	Air	Loop		Air	Loop		m	b
Deep	0.011	0.656	V	1.000	400.000	mmho/m	650.000	-3.000
Medium	-0.000	0.731	V	1.000	464.000	mmho/m	632.856	-10.500
Internal:	Zero	Cal		Zero	Cal		m	b
Deep	0.007	0.649	V	0.000	400.000	mmho/m	623.784	-4.595
Medium	0.004	0.743	V	0.000	464.000	mmho/m	627.284	-2.251

Downhole Calibration								
	Readings			References			Results	
	Zero	Cal		Zero	Cal		m'	b'
Deep	-0.824	395.917	mmho/m	-0.976	397.550	mmho/m	1.004	-0.149
Medium	3.565	471.327	mmho/m	3.468	471.590	mmho/m	1.001	-0.099
LL3		7.503	V		1500.000	Ohm-m		
		0.001	V		20.000	Ohm-m		
		-7.481	V		3745.000	mmho-m		

After Survey Verification								
	Readings			Targets			Results	
	Zero	Cal		Zero	Cal		m'	b'
Deep	0.000	0.000	mmho/m	-0.824	395.917	mmho/m	1.000	0.000
Medium	0.000	0.000	mmho/m	3.565	471.327	mmho/m	1.000	0.000
LL3		0.000	Ohm-m		1500.000	Ohm-m		
		0.000	Ohm-m		20.000	Ohm-m		
		0.000	mmho-m		3745.000	mmho-m		

Litho Density Calibration Report
Serial: 005 Model: Litho_Ver3

Master Calibration					Performed Fri May 13 13:54:36 2011			
	Background	Magnesium	Aluminum	Aluminum+Fe				
Window 1	1363.1	46477.8	11515.9	9589.9				cps
Window 2	1239.4	36488.4	9270.1	7998.9				cps
Window 3	1044.3	20488.1	5500.7	4913.3				cps
Window 4	315.7	358.7	321.5	319.5				cps
Long Space	0.0	35249.0	8030.7	6759.4				cps
Short Space	1.4	9675.7	6523.4	5391.9				cps
Rho		1.7100	2.5900	0.0000				g/cc
Pe		2.0000	2.7500	5.7900				
Rib Angle	: 45.1	Rib Slope	: 1.003	Density/Spine Ratio			: 0.575	
Spine Angle	: 75.1	Spine Slope	: 3.752	Spine Intercept			: -24.0	

Before Survey Verification					Performed Wed Dec 31 18:00:00 1969			
	Background	Magnesium	Aluminum	Aluminum+Fe				
Window 1	0.0	0.0	0.0	0.0				cps
Window 2	0.0	0.0	0.0	0.0				cps
Window 3	0.0	0.0	0.0	0.0				cps
Window 4	0.0	0.0	0.0	0.0				cps
Long Space	0.0	0.0	0.0	0.0				cps
Short Space	0.0	0.0	0.0	0.0				cps
Measured Rho		0.0000	0.0000	0.0000				g/cc
Measured Correction		0.0000	0.0000	0.0000				g/cc
Measured Pe			0.0000	0.0000				

After Survey Verification Performed Wed Dec 31 18:00:00 1969

Window 1	0.0	0.0	0.0	0.0	cps
Window 2	0.0	0.0	0.0	0.0	cps
Window 3	0.0	0.0	0.0	0.0	cps
Window 4	0.0	0.0	0.0	0.0	cps
Long Space	0.0	0.0	0.0	0.0	cps
Short Space	0.0	0.0	0.0	0.0	cps
Measured Rho		0.0000	0.0000	0.0000	g/cc
Measured Correction		0.0000	0.0000	0.0000	g/cc
Measured Pe			0.0000	0.0000	

Compensated Neutron Calibration Report

Serial Number: 080621PMC
Tool Model: NABORS

PRE-SURVEY VERIFICATION

Detector	Readings	Measured	Target
Short Space	cps		
Long Space	cps	pu	pu

POST-SURVEY VERIFICATION

Detector	Readings	Measured	Target
Short Space	cps		
Long Space	cps	pu	pu

Gamma Ray Calibration Report

Serial Number: 7
Tool Model: Probe1
Performed: Thu May 26 08:56:46 2022

Calibrator Value: 1.0 GAPI

Background Reading: 0.0 cps
Calibrator Reading: 1.0 cps

Sensitivity: 0.5500 GAPI/cps