



DUAL INDUCTION LOG

Company MAI OIL OPERATIONS, INC.
Well S&S A UNIT #1
Field KRAFT-PRUSA
County RUSSELL
State KANSAS

Location: API #: 15-167-24125-0000
 2817' FNL & 1202' FEL
 NW - NW - NE - SE
 SEC 36 TWP 15S RGE 12W
Permanent Datum GROUND LEVEL Elevation: 1850
Log Measured From KELLY BUSHING 10' A.G.L.
Drilling Measured From KELLY BUSHING
Other Services CDL/CNL MEL
Elevation K.B. 1860
 D.F. 1858
 G.L. 1850

Date	7/20/22
Run Number	ONE
Depth Driller	3410
Depth Logger	3412
Bottom Logged Interval	3410
Top Log Interval	00
Casing Driller	8 5/8" @ 729
Casing Logger	729
Bit Size	7 7/8
Type Fluid in Hole	CHEMICAL MUD
Density / Viscosity	9.0/49
PH / Fluid Loss	10.0/8.0
Source of Sample	FLOWLINE
Rm @ Meas. Temp	.800 @ 80F
Rmt @ Meas. Temp	.600 @ 80F
Rmc @ Meas. Temp	.960 @ 80F
Source of Rmf / Rmc	MEASUREMENT
Rm @ BHT	.577 @ 111F
Time Circulation Stopped	2 HOURS
Time Logger on Bottom	2:30 P.M.
Maximum Recorded Temperature	111F
Equipment Number	3802
Location	HAYS, KANSAS
Recorded By	COLE ROBBEN
Witnessed By	JIM MUSGROVE

<<< Fold Here >>>

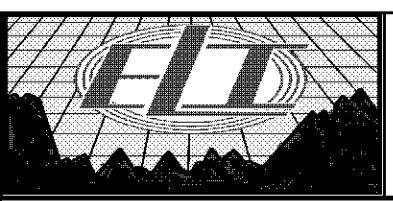
All interpretations are opinions based on inferences from electrical or other measurements and we cannot and do not guarantee the accuracy or correctness of any interpretation, and we shall not, except in the case of gross or willful negligence on our part, be liable or responsible for any loss, costs, damages, or expenses incurred or sustained by anyone resulting from any interpretation made by any of our officers, agents or employees. These interpretations are also subject to our general terms and conditions set out in our current Price Schedule.

Comments

THANK YOU FOR USING ELI WIRELINE SERVICES, HAYS, KS. (785) 628-6395

DIRECTIONS:

FROM DUBUQUE CHURCH GO 1 MILE NORTH, 1 MILE EAST, SOUTH INTO THROUGH ORANGE GA

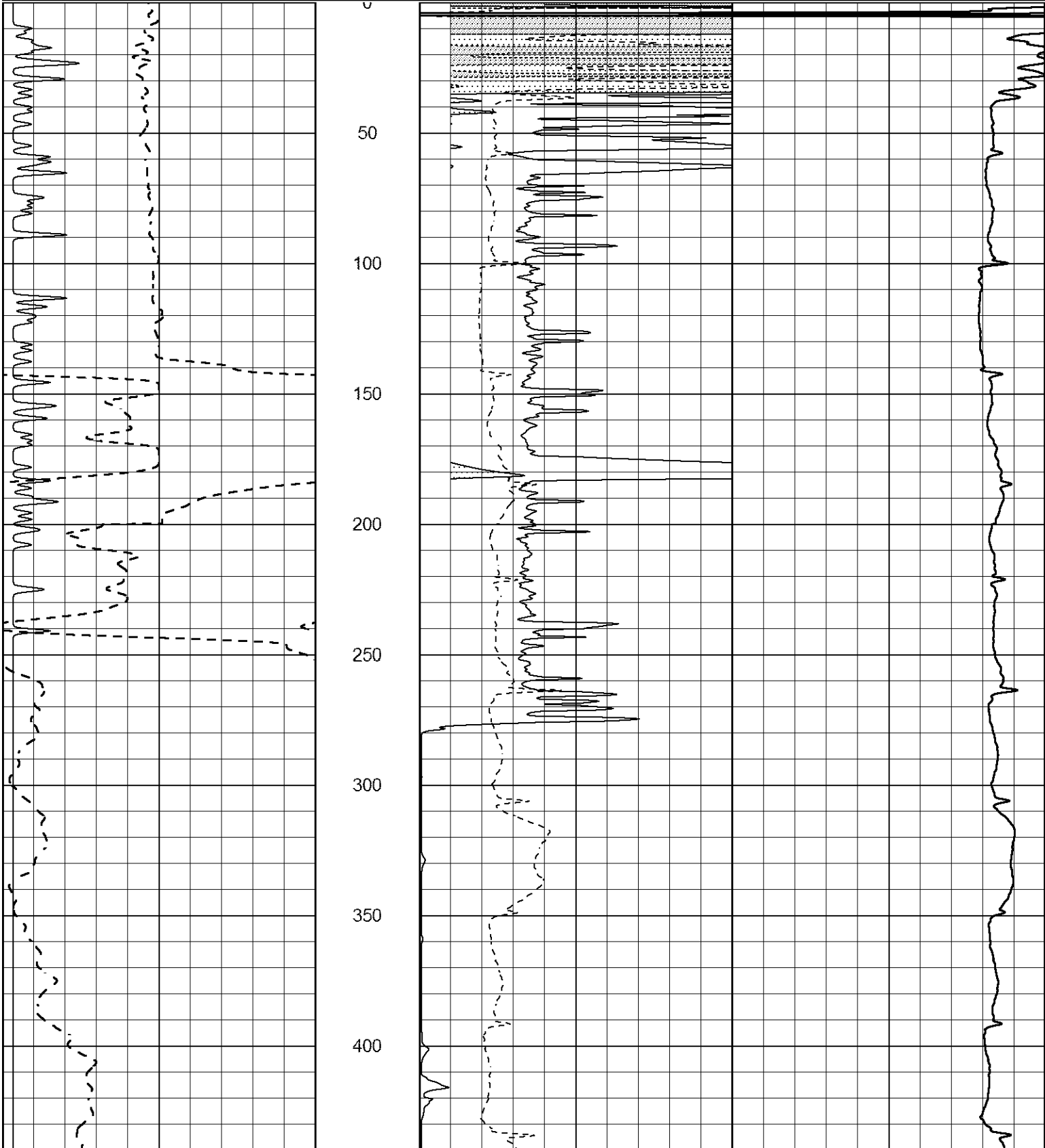


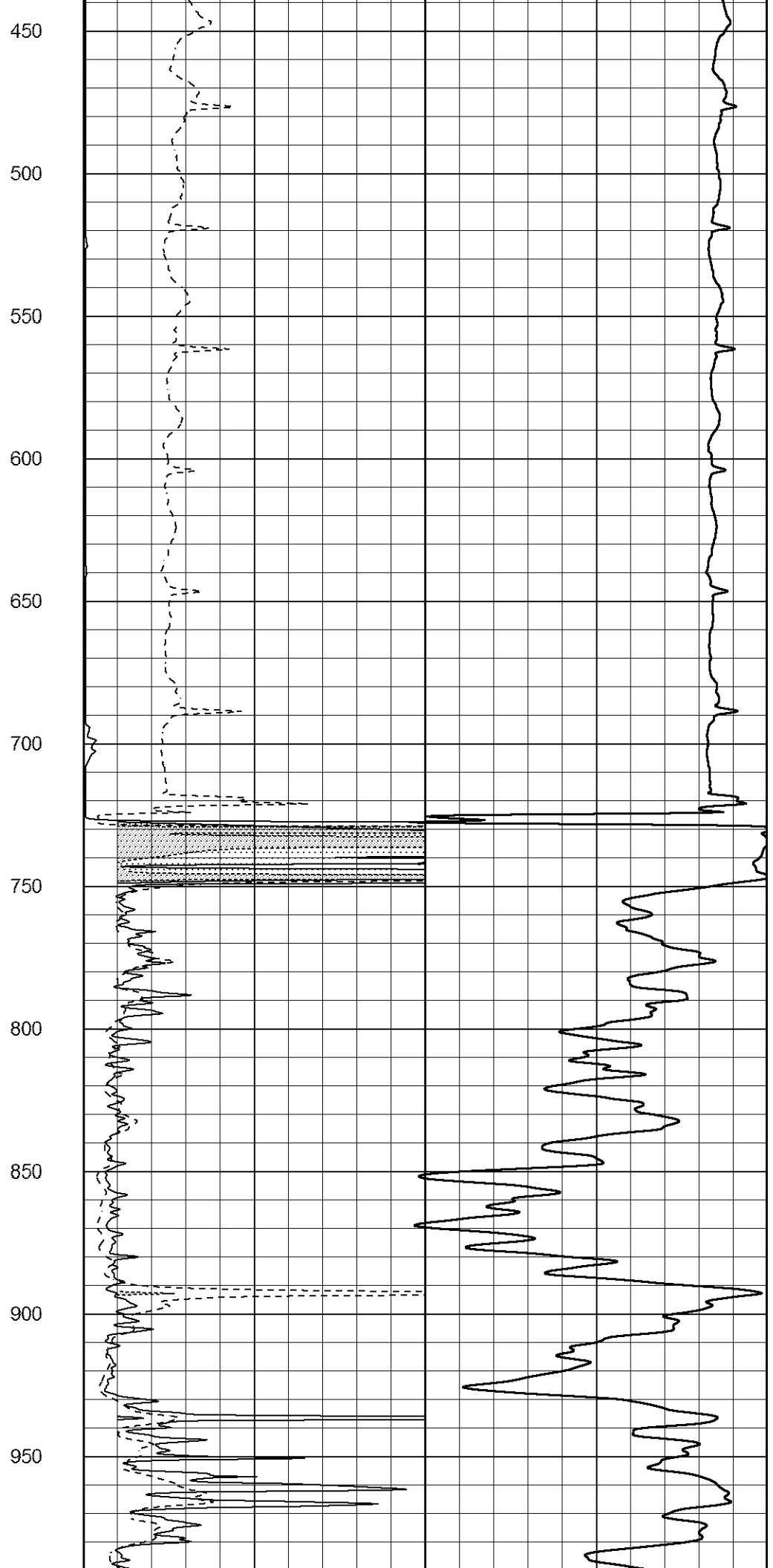
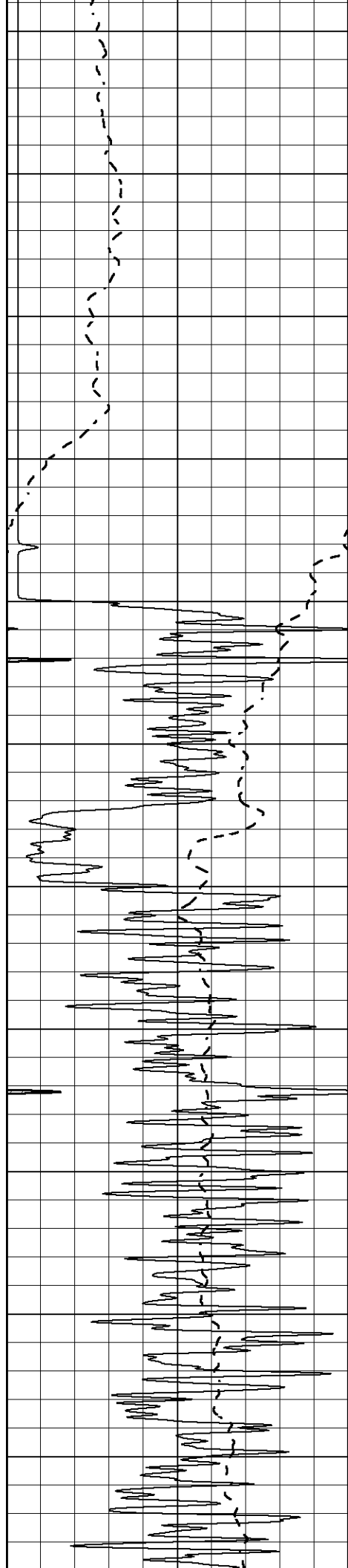
MAIN SECTION

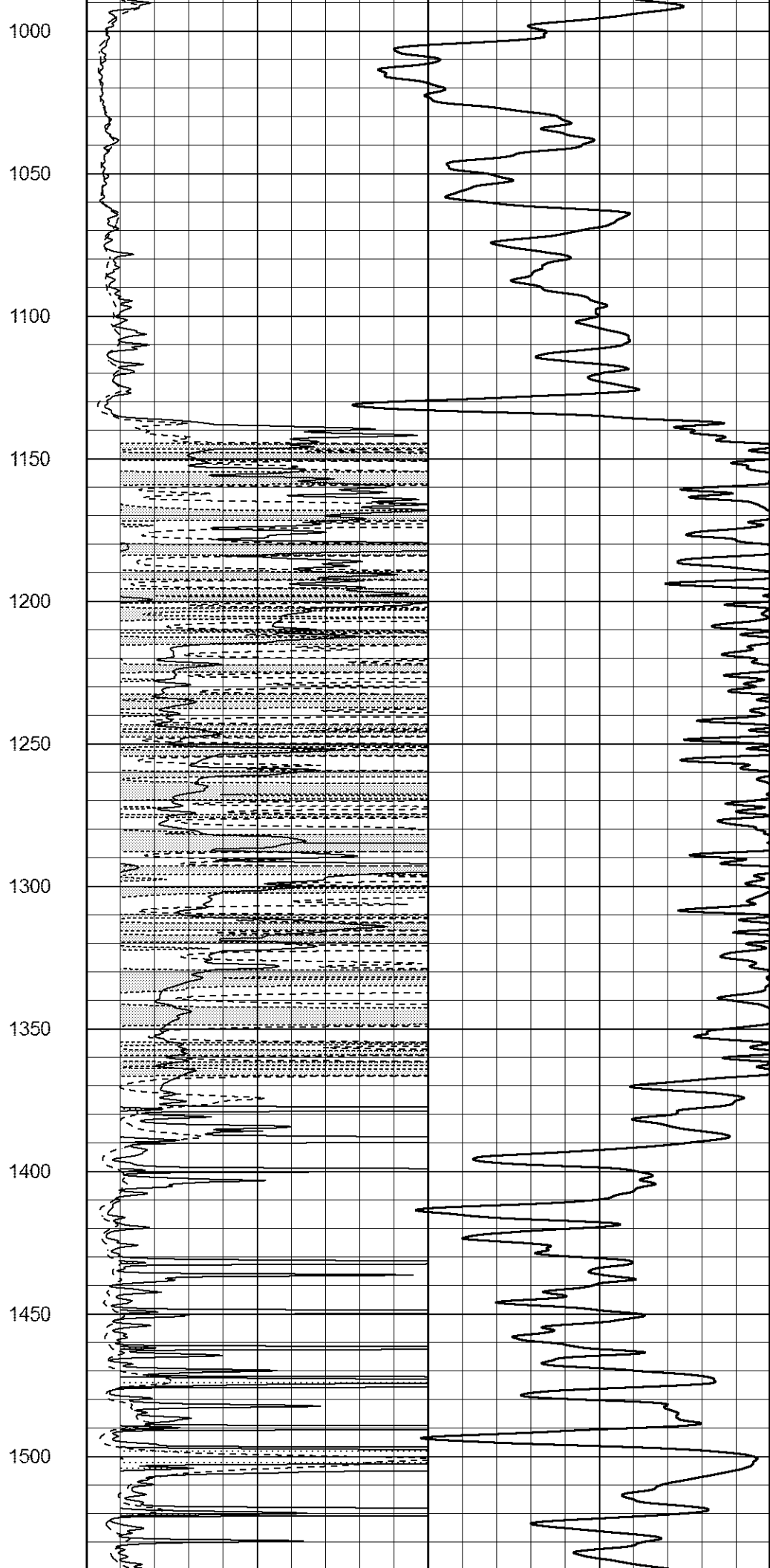
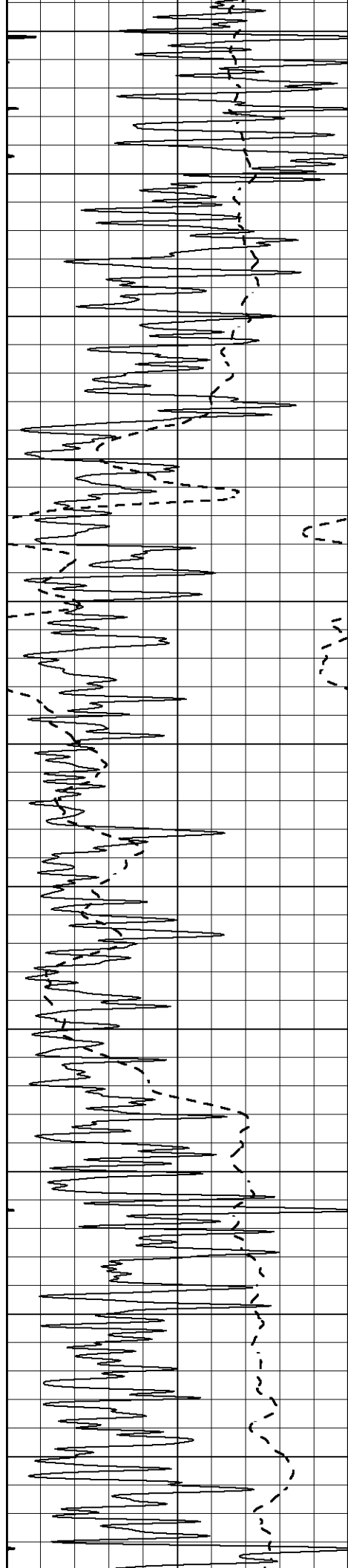
Database File 6760ddn.db
 Dataset Pathname pass7DILL
 Presentation Format _dil2
 Dataset Creation Wed Jul 20 17:03:07 2022
 Charted by Depth in Feet scaled 1:600

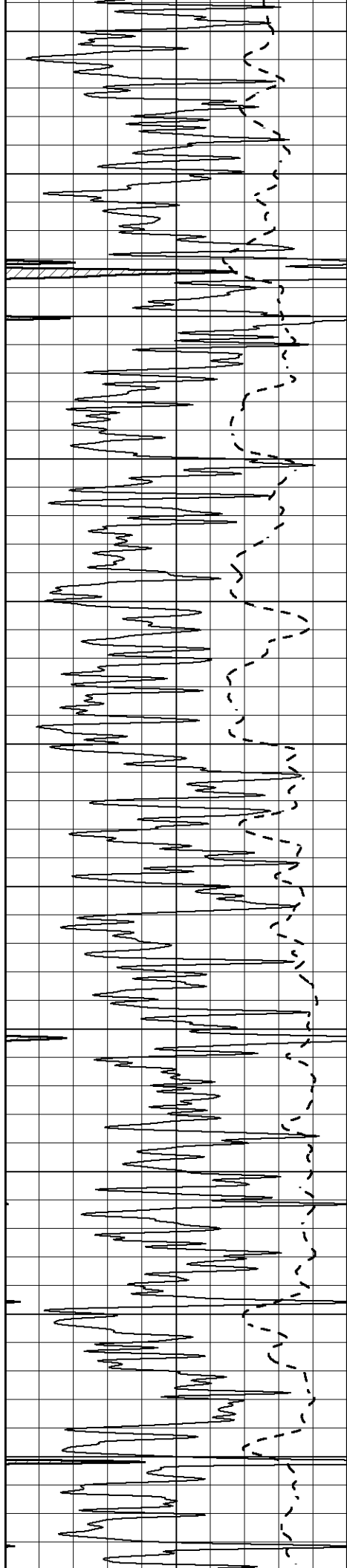
0 Gamma Ray (GAPI) 150
 -100 SP (mV) 100

1000 CILD (mmho/m) 0
 0 RLL3 (Ohm-m) 50
 0 Deep Induction (Ohm-m) 50
 50 RILD X10 (Ohm-m) 500
 50 RLL3 X10 (Ohm-m) 500









1550

1600

1650

1700

1750

1800

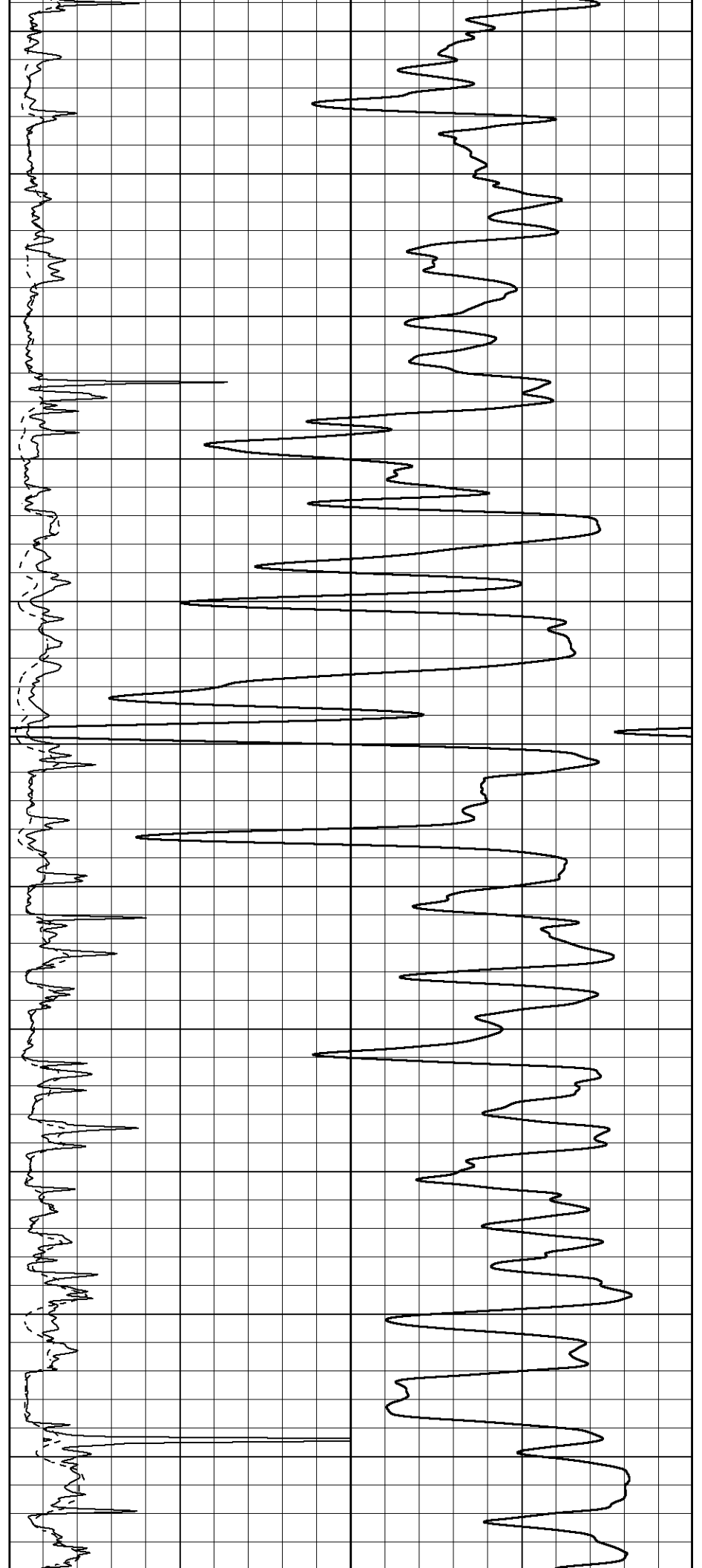
1850

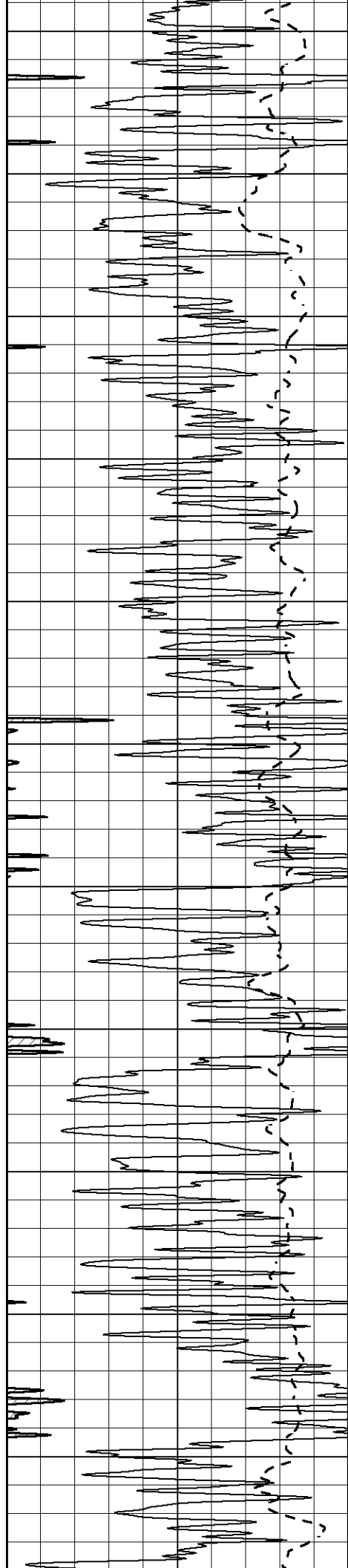
1900

1950

2000

2050





2100

2150

2200

2250

2300

2350

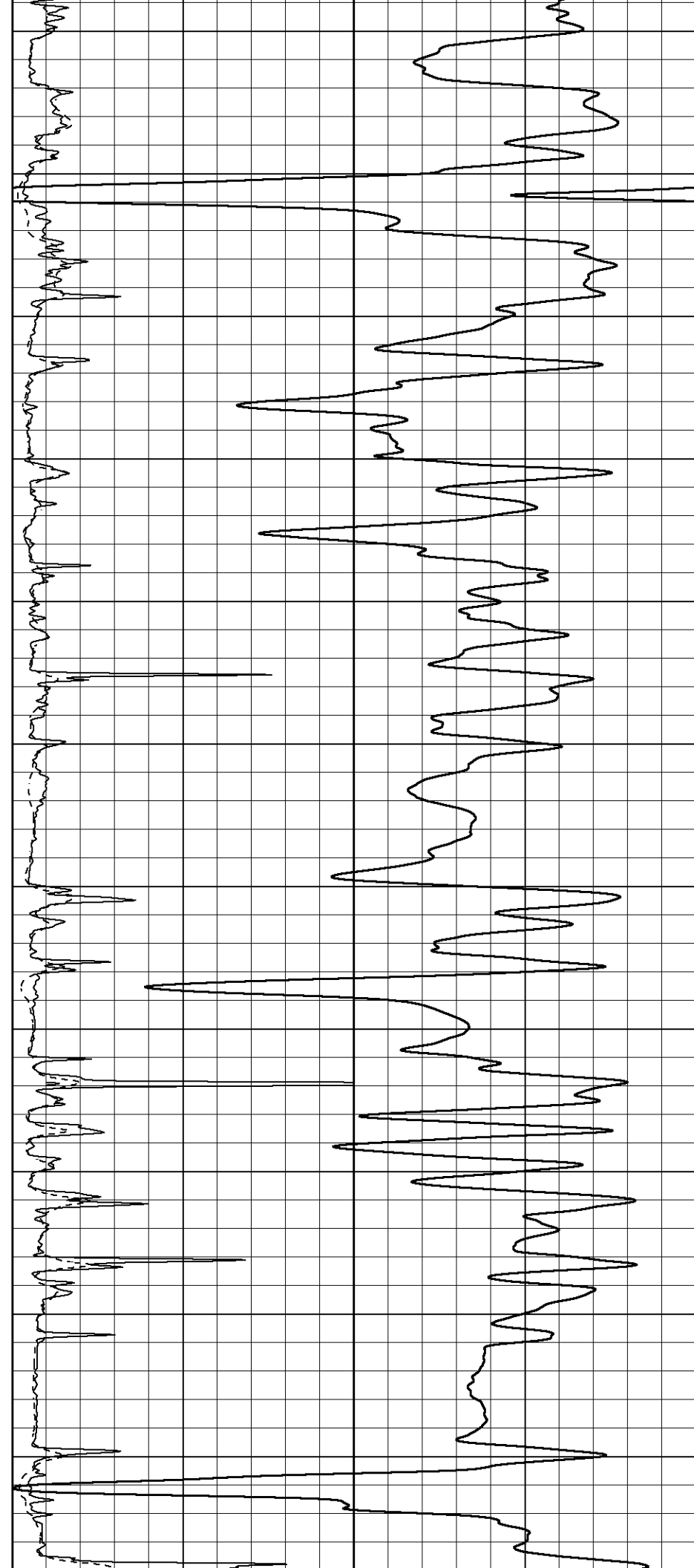
2400

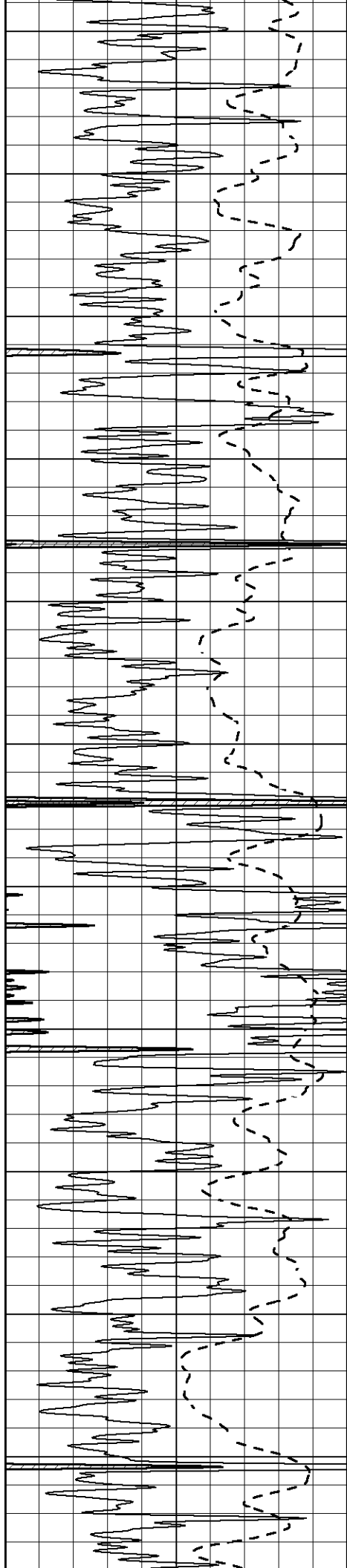
2450

2500

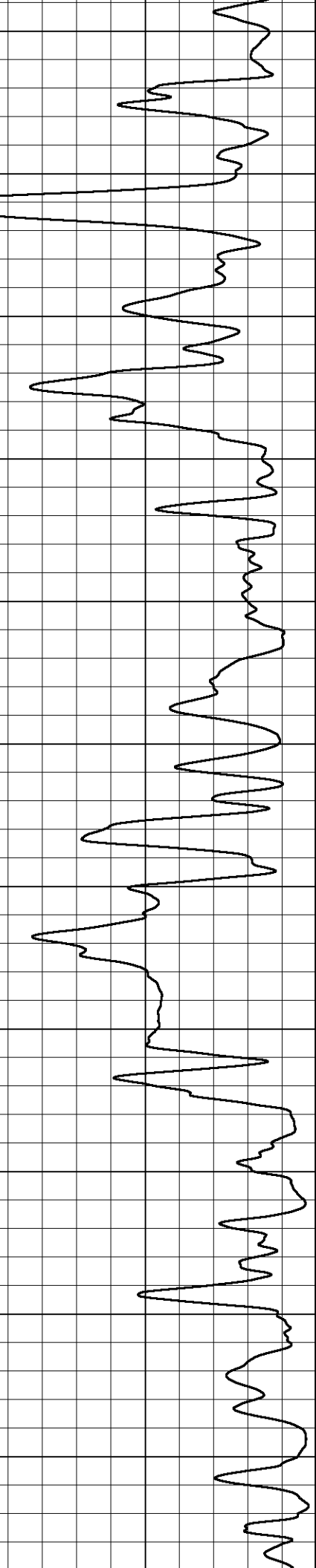
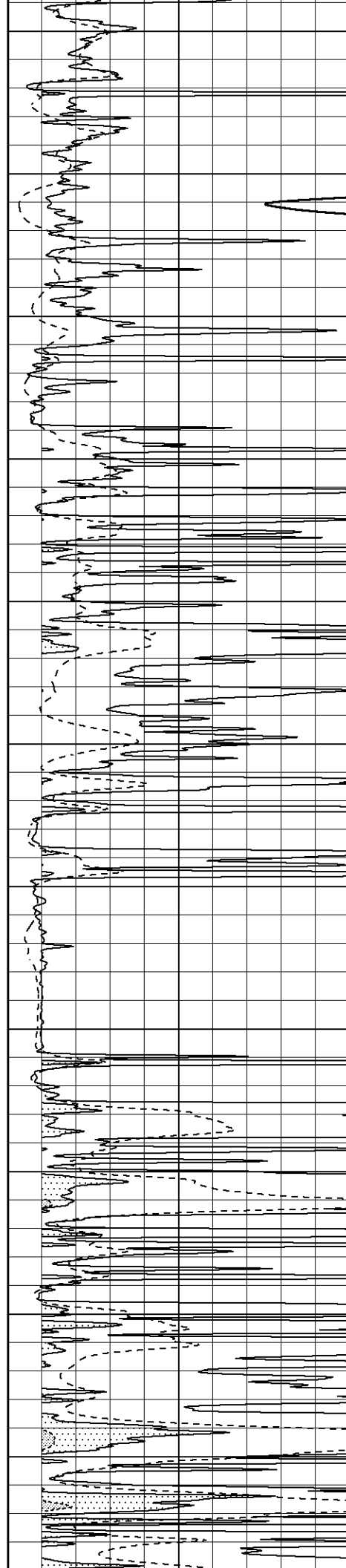
2550

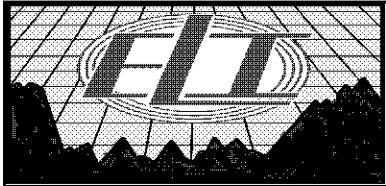
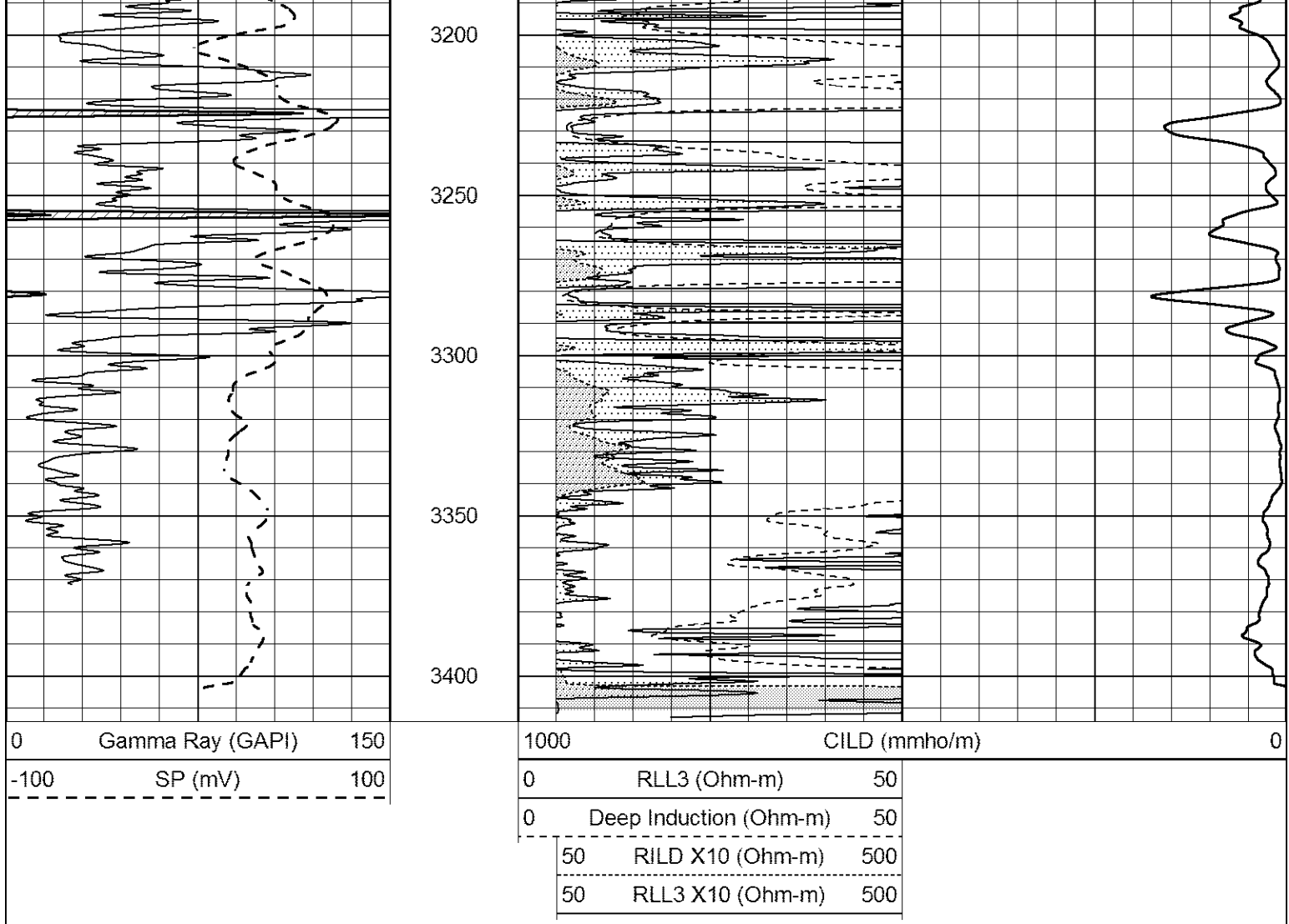
2600





2650
2700
2750
2800
2850
2900
2950
3000
3050
3100
3150

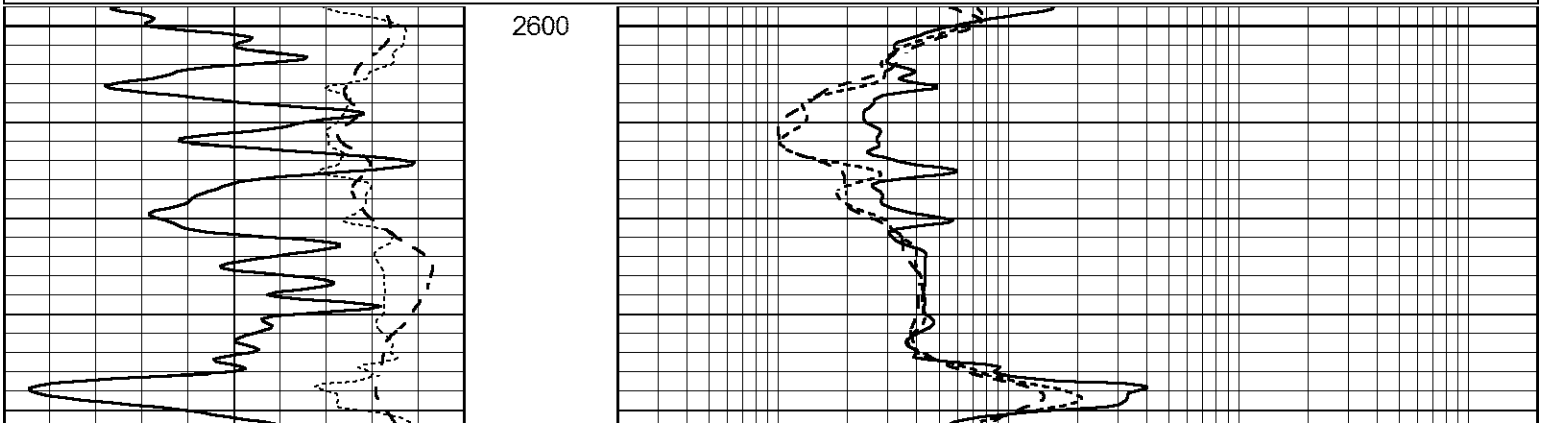


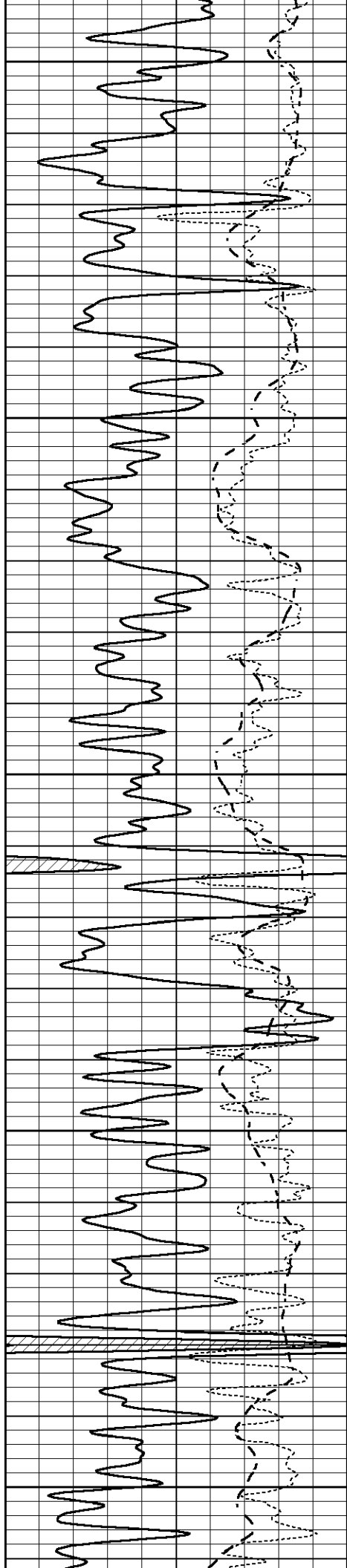


MAIN SECTION

Database File 6760ddn.db
 Dataset Pathname pass7DILL
 Presentation Format _dil
 Dataset Creation Wed Jul 20 17:03:07 2022
 Charted by Depth in Feet scaled 1:240

<table border="1" style="width: 100%; border-collapse: collapse;"> <tr> <td style="width: 10%;">0</td> <td style="width: 80%;">GAMMA RAY (GAPI)</td> <td style="width: 10%;">150</td> </tr> <tr> <td>-100</td> <td>SP (mV)</td> <td>100</td> </tr> <tr> <td>-250</td> <td>Rxo/Rt</td> <td>50</td> </tr> </table>	0	GAMMA RAY (GAPI)	150	-100	SP (mV)	100	-250	Rxo/Rt	50	<table border="1" style="width: 100%; border-collapse: collapse;"> <tr> <td style="width: 10%;">0.2</td> <td style="width: 80%;">SHALLOW GUARD (Ohm-m)</td> <td style="width: 10%;">2000</td> </tr> <tr> <td>0.2</td> <td>MEDIUM INDUCTION (Ohm-m)</td> <td>2000</td> </tr> <tr> <td>0.2</td> <td>DEEP INDUCTION (Ohm-m)</td> <td>2000</td> </tr> </table>	0.2	SHALLOW GUARD (Ohm-m)	2000	0.2	MEDIUM INDUCTION (Ohm-m)	2000	0.2	DEEP INDUCTION (Ohm-m)	2000
0	GAMMA RAY (GAPI)	150																	
-100	SP (mV)	100																	
-250	Rxo/Rt	50																	
0.2	SHALLOW GUARD (Ohm-m)	2000																	
0.2	MEDIUM INDUCTION (Ohm-m)	2000																	
0.2	DEEP INDUCTION (Ohm-m)	2000																	





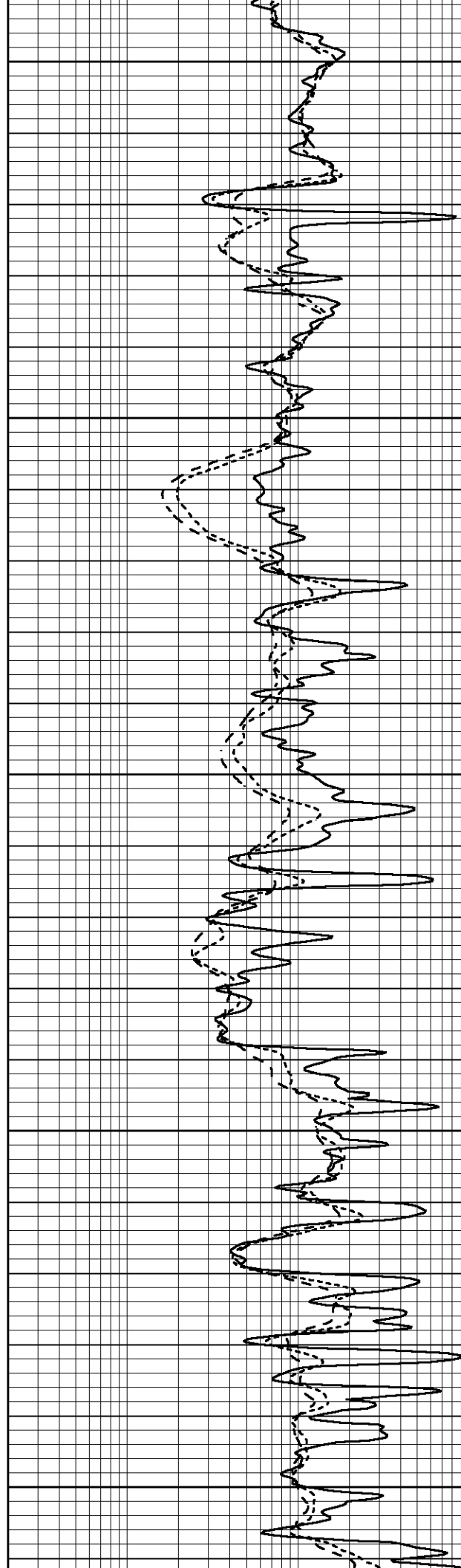
2650

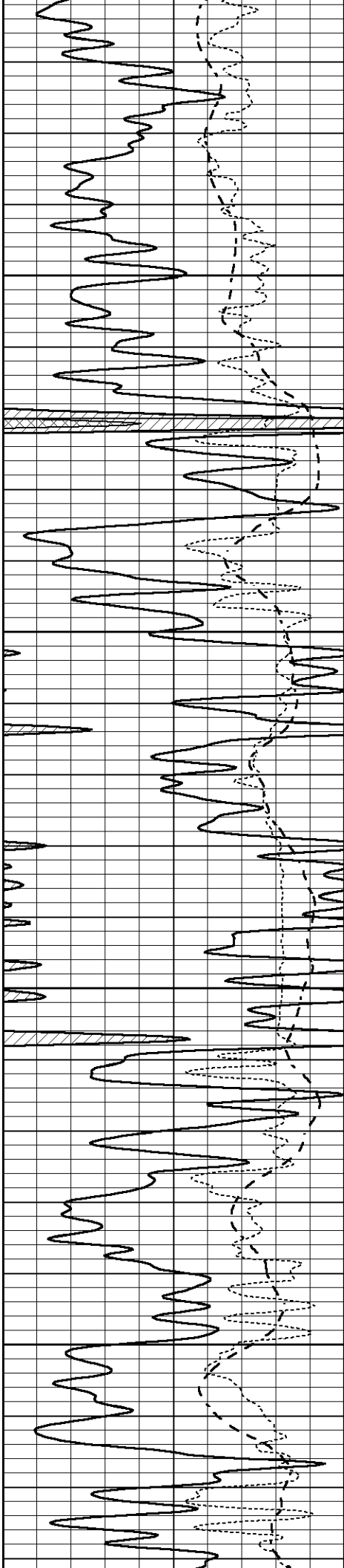
2700

2750

2800

2850



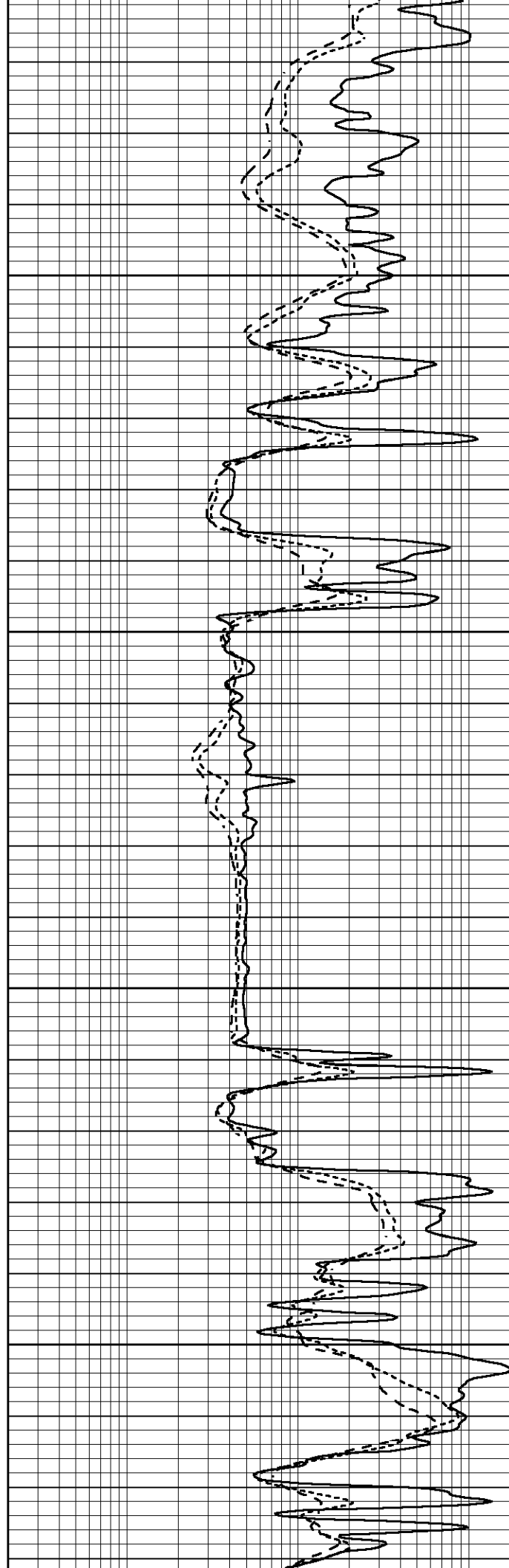


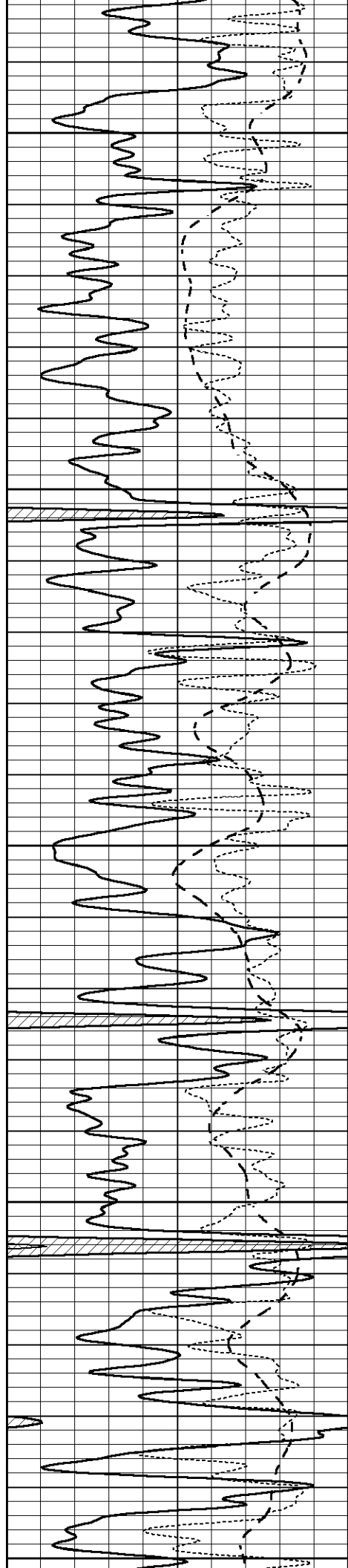
2900

2950

3000

3050





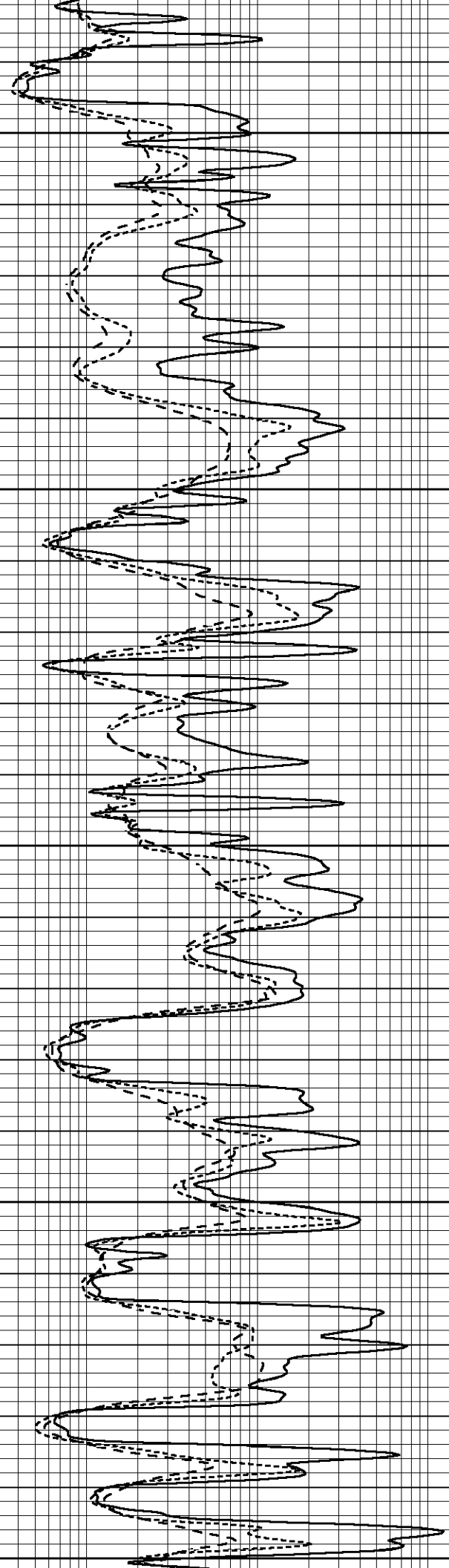
3100

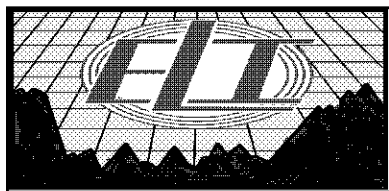
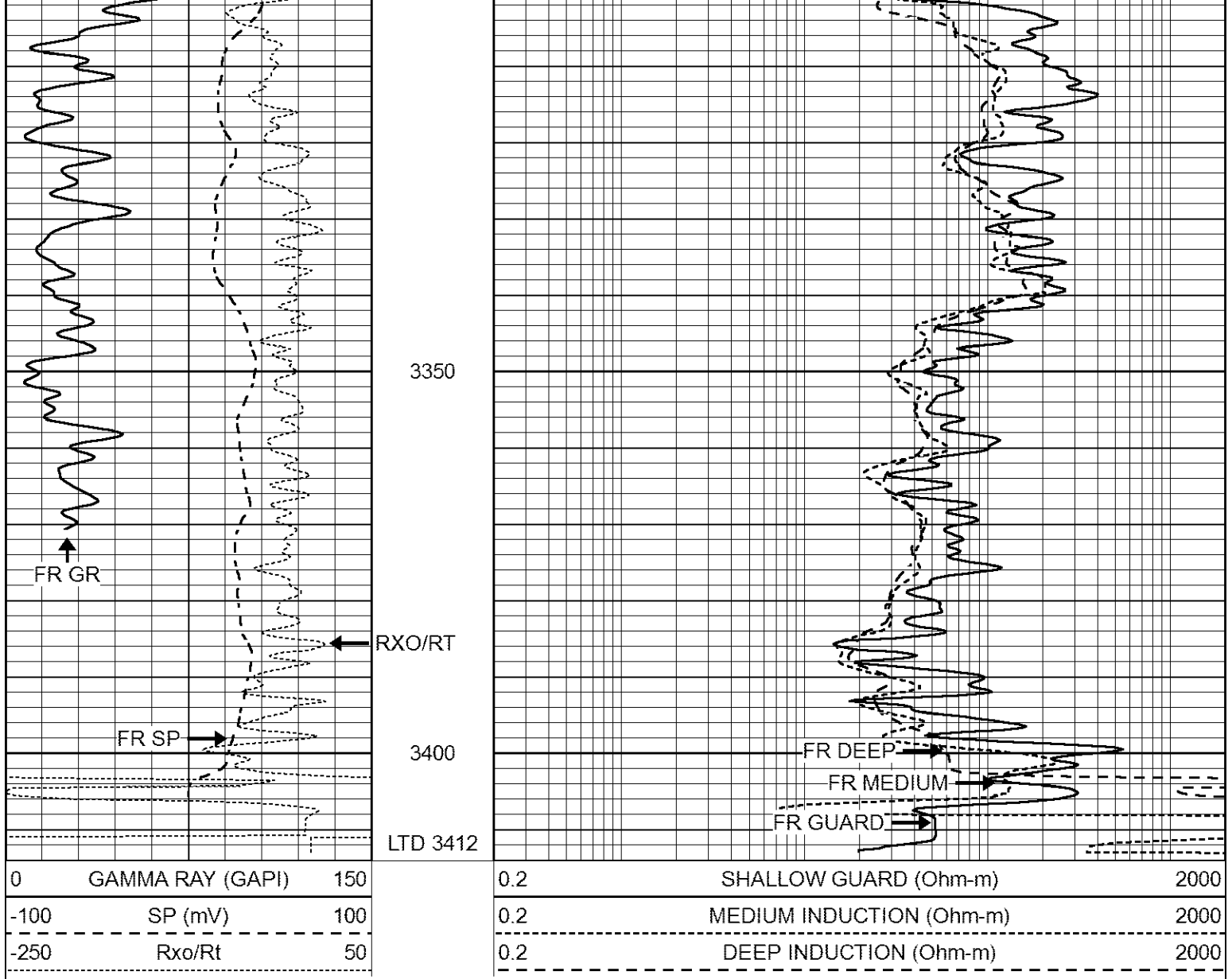
3150

3200

3250

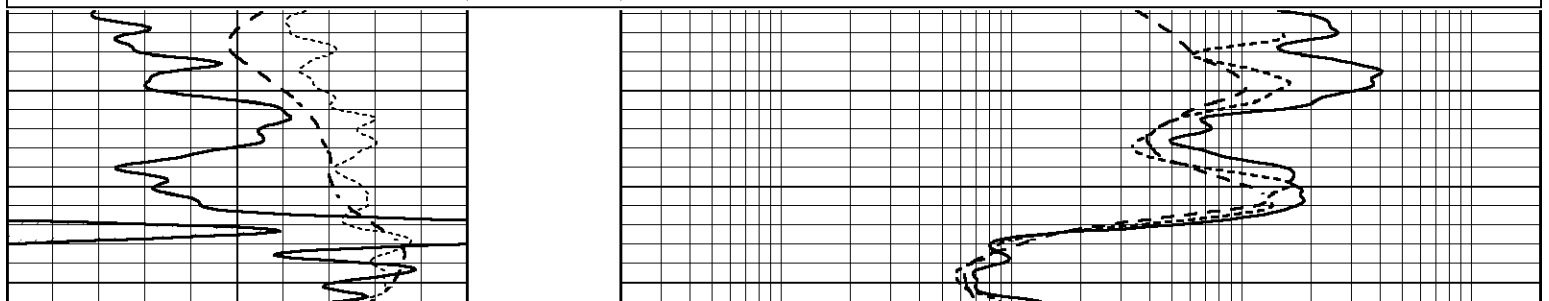
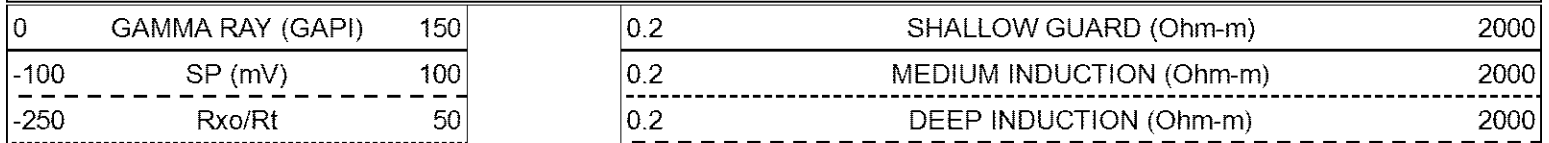
3300

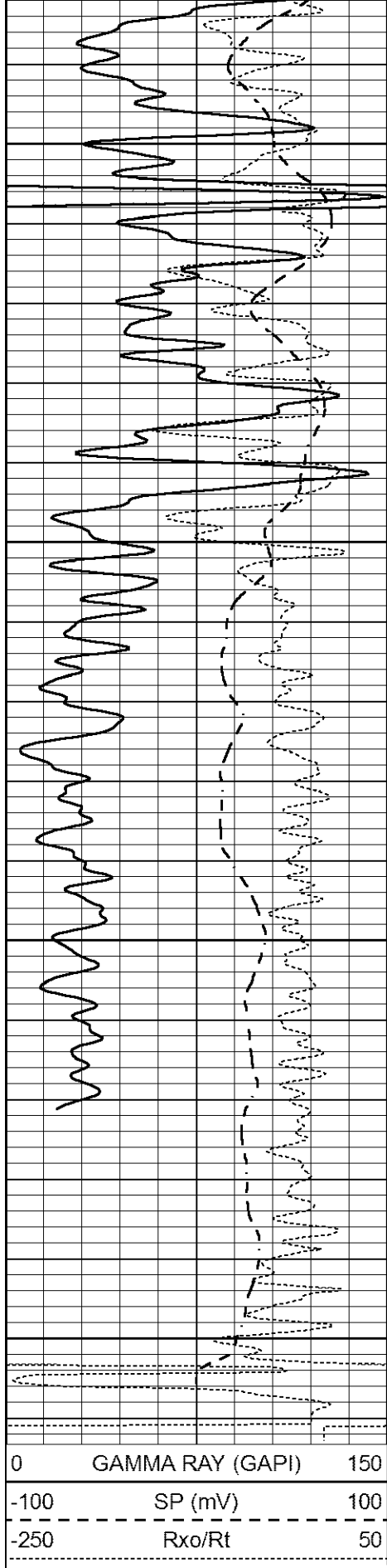




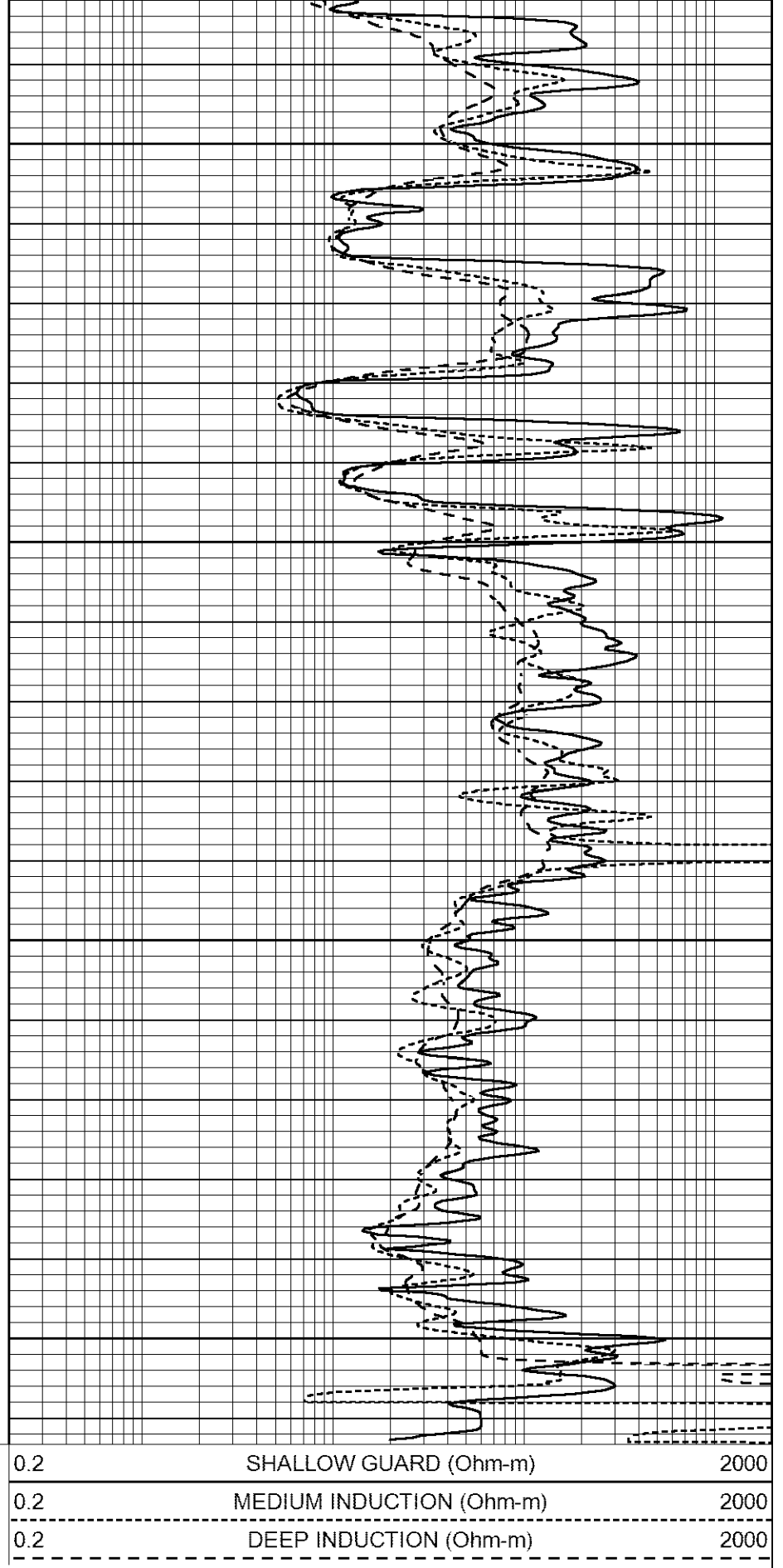
REPEAT SECTION

Database File 6760ddn.db
 Dataset Pathname pass6.1
 Presentation Format _dil
 Dataset Creation Wed Jul 20 16:30:15 2022
 Charted by Depth in Feet scaled 1:240





3250
3300
3350
3400



Calibration Report

Database File 6760ddn.db
 Dataset Pathname pass7DILL
 Dataset Creation Wed Jul 20 17:03:07 2022

Dual Induction Calibration Report

Serial-Model: FW1410-56-Probe
 Surface Cal Performed: Tue May 17 12:24:41 2022
 Downhole Cal Performed: Tue Jul 25 12:15:37 2017
 After Survey Verification Performed: Tue Jul 25 12:15:38 2017

Surface Calibration

Loop:	Readings			References			Results	
	Air	Loop	V	Air	Loop		m	b
Deep	0.008	0.765	V	1.000	400.000	mmho/m	420.000	-2.000
Medium	-0.056	0.761	V	1.000	464.000	mmho/m	420.000	131.000
Internal:	Zero	Cal		Zero	Cal		m	b
Deep	0.005	0.624	V	0.000	400.000	mmho/m	645.611	-3.034
Medium	0.012	0.721	V	0.000	464.000	mmho/m	653.591	-7.532

Downhole Calibration

	Readings			References			Results	
	Zero	Cal		Zero	Cal		m'	b'
Deep	-0.647	301.329	mmho/m	-0.780	336.378	mmho/m	1.117	-0.058
Medium	38.256	411.013	mmho/m	39.046	441.706	mmho/m	1.080	-2.280
LL3		7.471	V		2500.000	Ohm-m		
		0.001	V		20.000	Ohm-m		
		-7.085	V		4000.000	mmho-m		

After Survey Verification

	Readings			Targets			Results	
	Zero	Cal		Zero	Cal		m'	b'
Deep	0.000	0.000	mmho/m	-0.647	301.329	mmho/m	1.000	0.000
Medium	0.000	0.000	mmho/m	38.256	411.013	mmho/m	1.000	0.000
LL3		0.000	Ohm-m		1500.000	Ohm-m		
		0.000	Ohm-m		20.000	Ohm-m		
		0.000	mmho-m		3745.000	mmho-m		

Litho Density Calibration Report

Serial: 005 Model: Litho_Ver3

Master Calibration

Performed Fri May 13 13:54:36 2022

	Background	Magnesium	Aluminum	Aluminum+Fe	
Window 1	1363.1	46477.8	11515.9	9589.9	cps
Window 2	1239.4	36488.4	9270.1	7998.9	cps
Window 3	1044.3	20488.1	5500.7	4913.3	cps
Window 4	315.7	358.7	321.5	319.5	cps
Long Space	0.0	35249.0	8030.7	6759.4	cps
Short Space	1.4	9675.7	6523.4	5391.9	cps
Rho		1.7100	2.5900	0.0000	g/cc
Pe		2.0000	2.7500	5.7900	
Rib Angle	: 45.1	Rib Slope	: 1.003	Density/Spine Ratio	: 0.575
Spine Angle	: 75.1	Spine Slope	: 3.752	Spine Intercept	: -24.0

Before Survey Verification

Performed Wed Dec 31 18:00:00 1969

	Background	Magnesium	Aluminum	Aluminum+Fe	
Window 1	0.0	0.0	0.0	0.0	cps
Window 2	0.0	0.0	0.0	0.0	cps
Window 3	0.0	0.0	0.0	0.0	cps

Window 3	0.0	0.0	0.0	0.0	cps
Window 4	0.0	0.0	0.0	0.0	cps
Long Space	0.0	0.0	0.0	0.0	cps
Short Space	0.0	0.0	0.0	0.0	cps
Measured Rho		0.0000	0.0000	0.0000	g/cc
Measured Correction		0.0000	0.0000	0.0000	g/cc
Measured Pe			0.0000	0.0000	

After Survey Verification

Performed Wed Dec 31 18:00:00 1969

Window 1	0.0	0.0	0.0	0.0	cps
Window 2	0.0	0.0	0.0	0.0	cps
Window 3	0.0	0.0	0.0	0.0	cps
Window 4	0.0	0.0	0.0	0.0	cps
Long Space	0.0	0.0	0.0	0.0	cps
Short Space	0.0	0.0	0.0	0.0	cps
Measured Rho		0.0000	0.0000	0.0000	g/cc
Measured Correction		0.0000	0.0000	0.0000	g/cc
Measured Pe			0.0000	0.0000	

Compensated Neutron Calibration Report

Serial Number: 080621PMC
Tool Model: NABORS

PRE-SURVEY VERIFICATION

Detector	Readings	Measured	Target
Short Space	cps		
Long Space	cps	pu	pu

POST-SURVEY VERIFICATION

Detector	Readings	Measured	Target
Short Space	cps		
Long Space	cps	pu	pu

Gamma Ray Calibration Report

Serial Number: 7
Tool Model: Probe1
Performed: Thu May 26 08:56:46 2022

Calibrator Value: 1.0 GAPI

Background Reading: 0.0 cps
Calibrator Reading: 1.0 cps

Sensitivity: 0.5500 GAPI/cps