



**COMPENSATED  
DENSITY / NEUTRON  
PE LOG**

Company MccOY PETROLEUM CORPORATION  
Well GRESSEL "A" #1-1  
Field BADGER CREEK  
County SUMNER  
State KANSAS

Company MccOY PETROLEUM CORPORATION  
Well GRESSEL "A" #1-1  
Field BADGER CREEK  
County SUMNER State KANSAS

Location: 330' FSL & 615' FEL  
W/2 - SE - SE - SE  
API #: 15-191-22850-0000  
Permanent Datum GROUND LEVEL Elevation 1238  
Log Measured From KELLY BUSHING 12' A.G.L.  
Drilling Measured From KELLY BUSHING  
SEC 1 TWP 34S RGE 1E  
Other Services  
DILMEL  
SONIC  
Elevation  
K.B. 1250  
D.F. 1248  
G.L. 1238

Date	8/8/22
Run Number	ONE
Depth Driller	3920
Depth Logger	3920
Bottom Logged Interval	3896
Top Log Interval	2200
Casing Driller	8 5/8"@251'
Casing Logger	251
Bit Size	7 7/8"
Type Fluid in Hole	CHEMICAL MUD
Density / Viscosity	9.4/53
pH / Fluid Loss	9.0/10.8
Source of Sample	FLOWLINE
Rm @ Meas. Temp	.900@80F
Rmf @ Meas. Temp	.675@80F
Rmc @ Meas. Temp	1.08@90F
Source of Rmf / Rmc	MEASUREMENT
Rm @ BHT	.626@115F
Time Circulation Stopped	8 HOURS
Time Logger on Bottom	9:00 P.M.
Maximum Recorded Temperature	115F
Equipment Number	922339
Location	HAYS, KANSAS
Recorded By	JEFF LUEBBERS
Witnessed By	DAVE WILLIAMS

<<< Fold Here >>>

All interpretations are opinions based on inferences from electrical or other measurements and we cannot and do not guarantee the accuracy or correctness of any interpretation, and we shall not, except in the case of gross or willful negligence on our part, be liable or responsible for any loss, costs, damages, or expenses incurred or sustained by anyone resulting from any interpretation made by any of our officers, agents or employees. These interpretations are also subject to our general terms and conditions set out in our current Price Schedule.

15-191-22850-0000 Comments

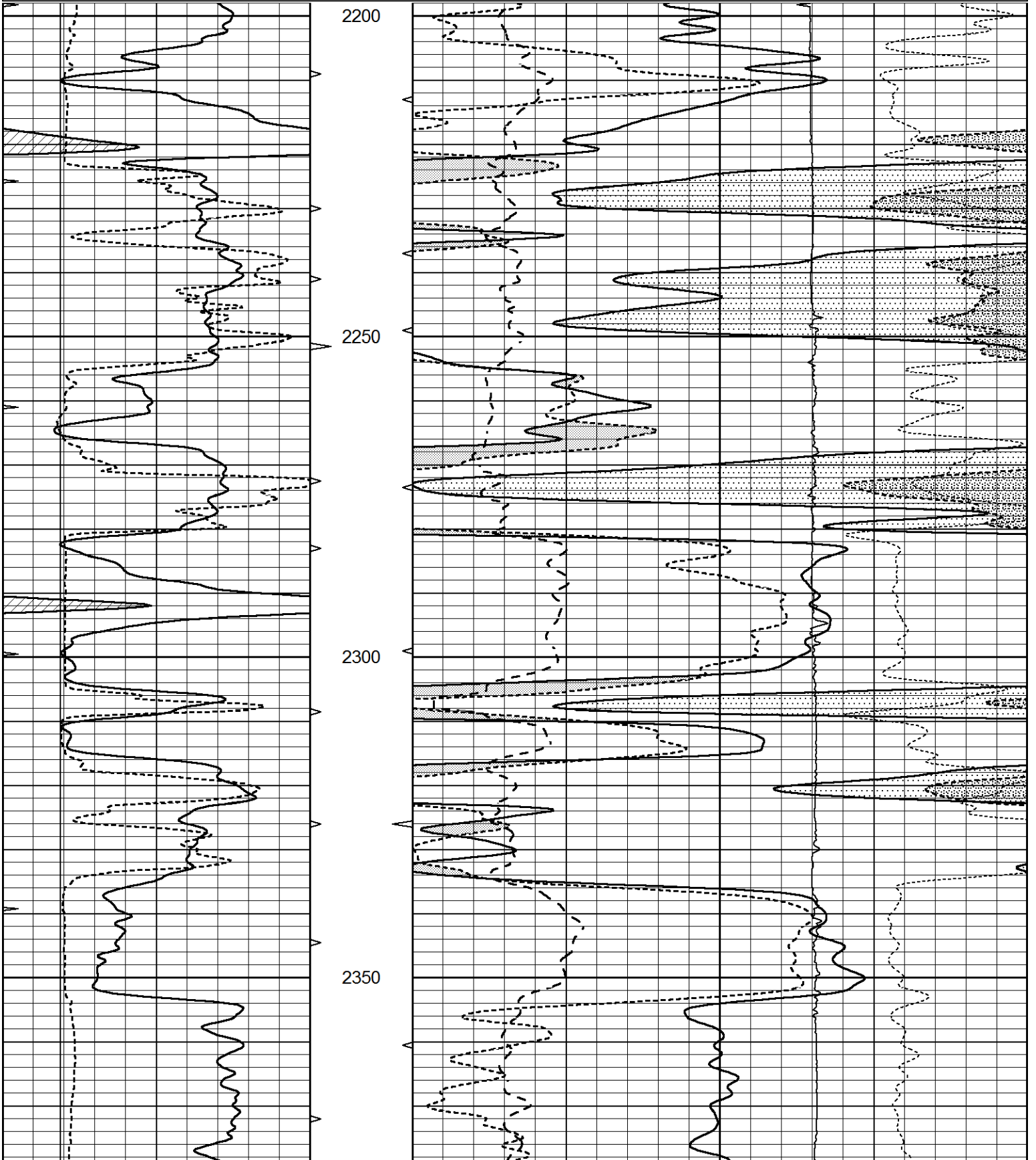
THANK YOU FOR USING ELI WIRELINE HAYS, KANSAS (785) 628-6395  
DIRECTIONS  
WICHITA, KS., S. ON I-35 TO EXIT 4, (HWY 166/SOUTH HAVEN), 3 1/2E. TO "S. OLIVER", 4N. TO  
"120TH ST.", 1E., N. INTO

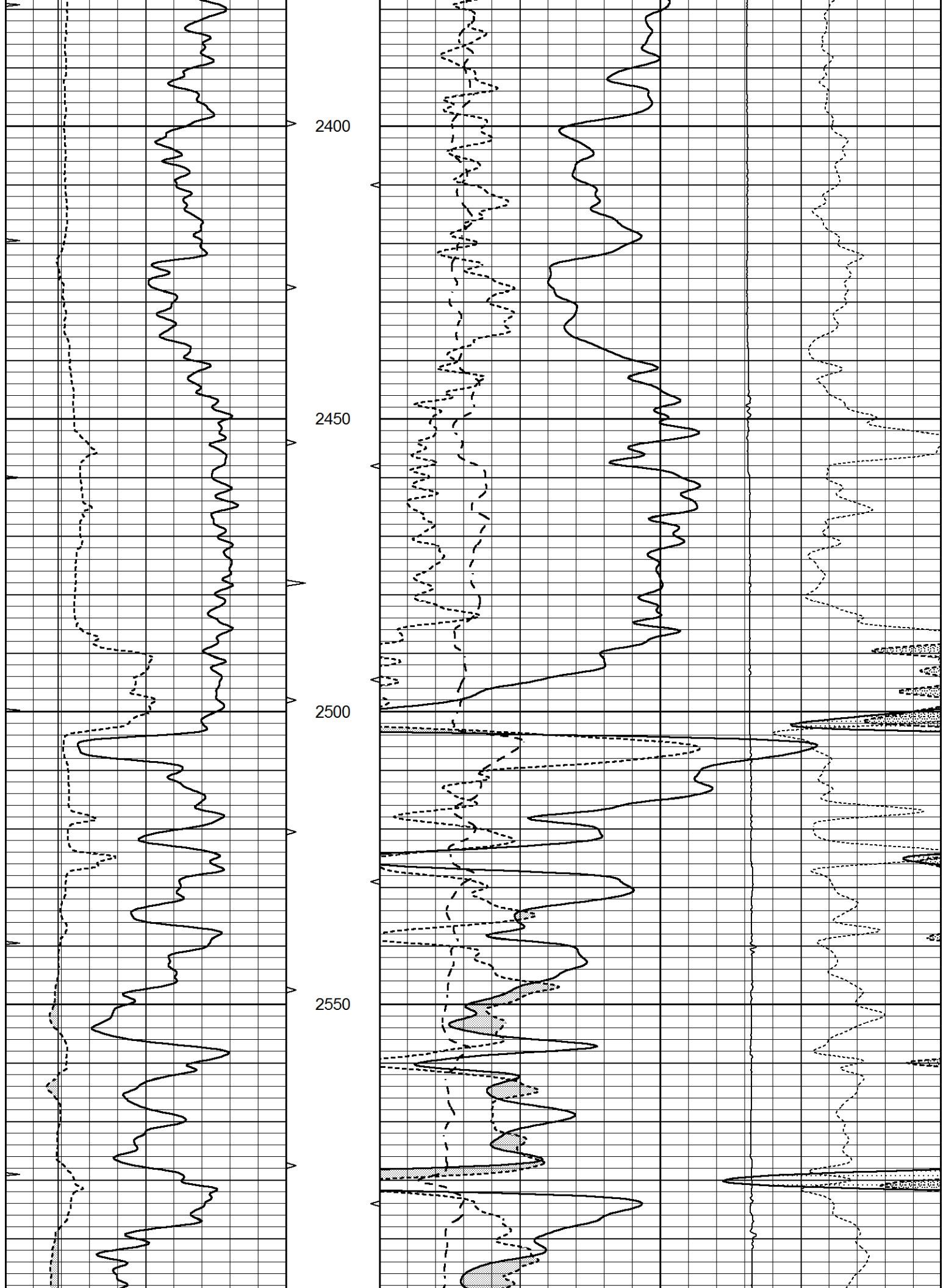


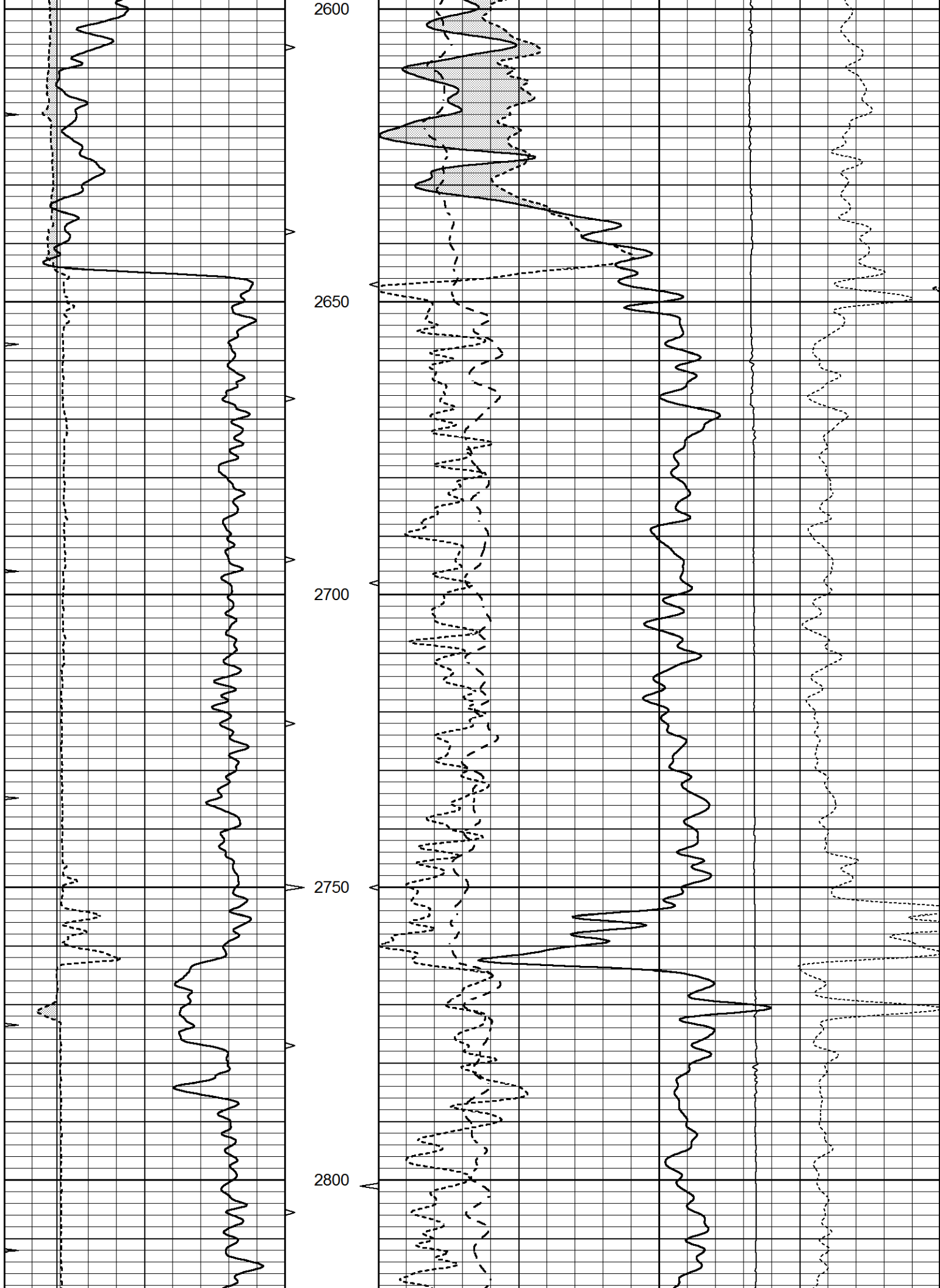
# MAIN SECTION

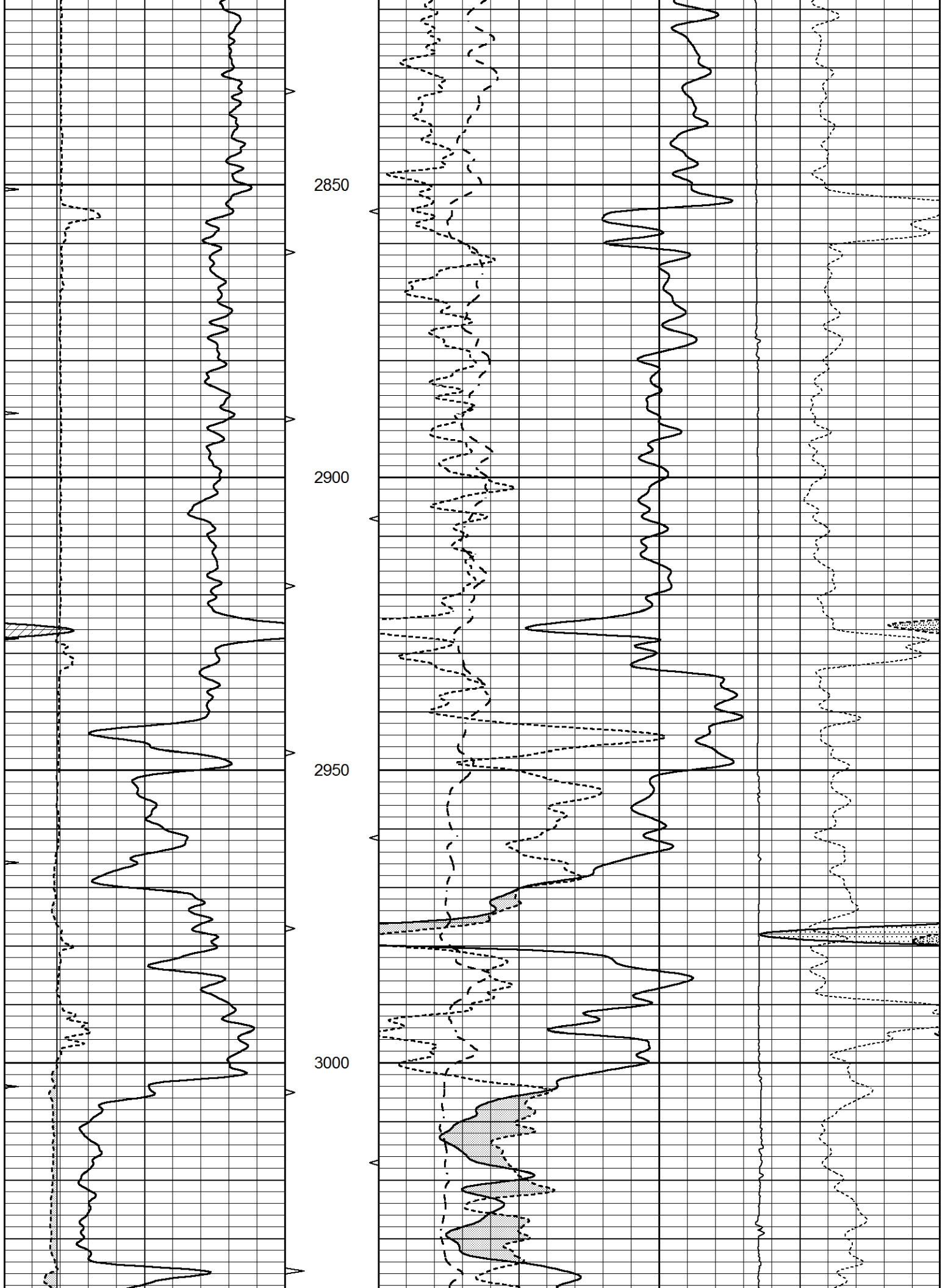
Database File 6350pe.db  
 Dataset Pathname pass3.1M  
 Presentation Format ldt\_neu  
 Dataset Creation Mon Aug 08 23:34:12 2022  
 Charted by Depth in Feet scaled 1:240

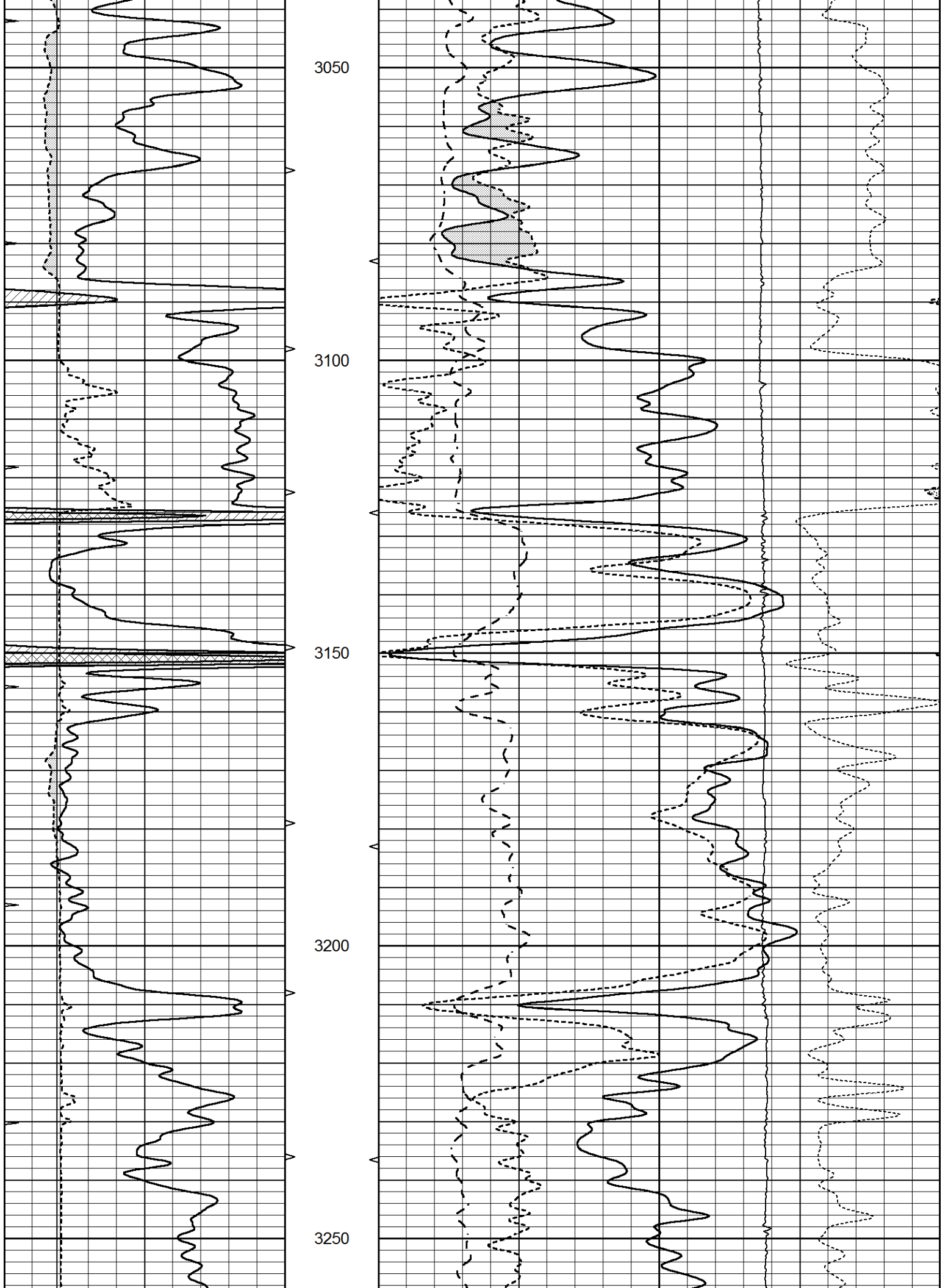
0	GAMMA RAY (GAPI)	150	ABHV	30	COMPENSATED DENSITY (pu)				-10	
6	CALIPER (in)	16	10 (ft3)	0	30	COMPENSATED NEUTRON (pu)				-10
0	MINMK	20	TBHV	0	PE	10	-0.25	CORRECTION (g/cc)	0.25	
			0 (ft3)	10			0	LTEN (lb)	5000	

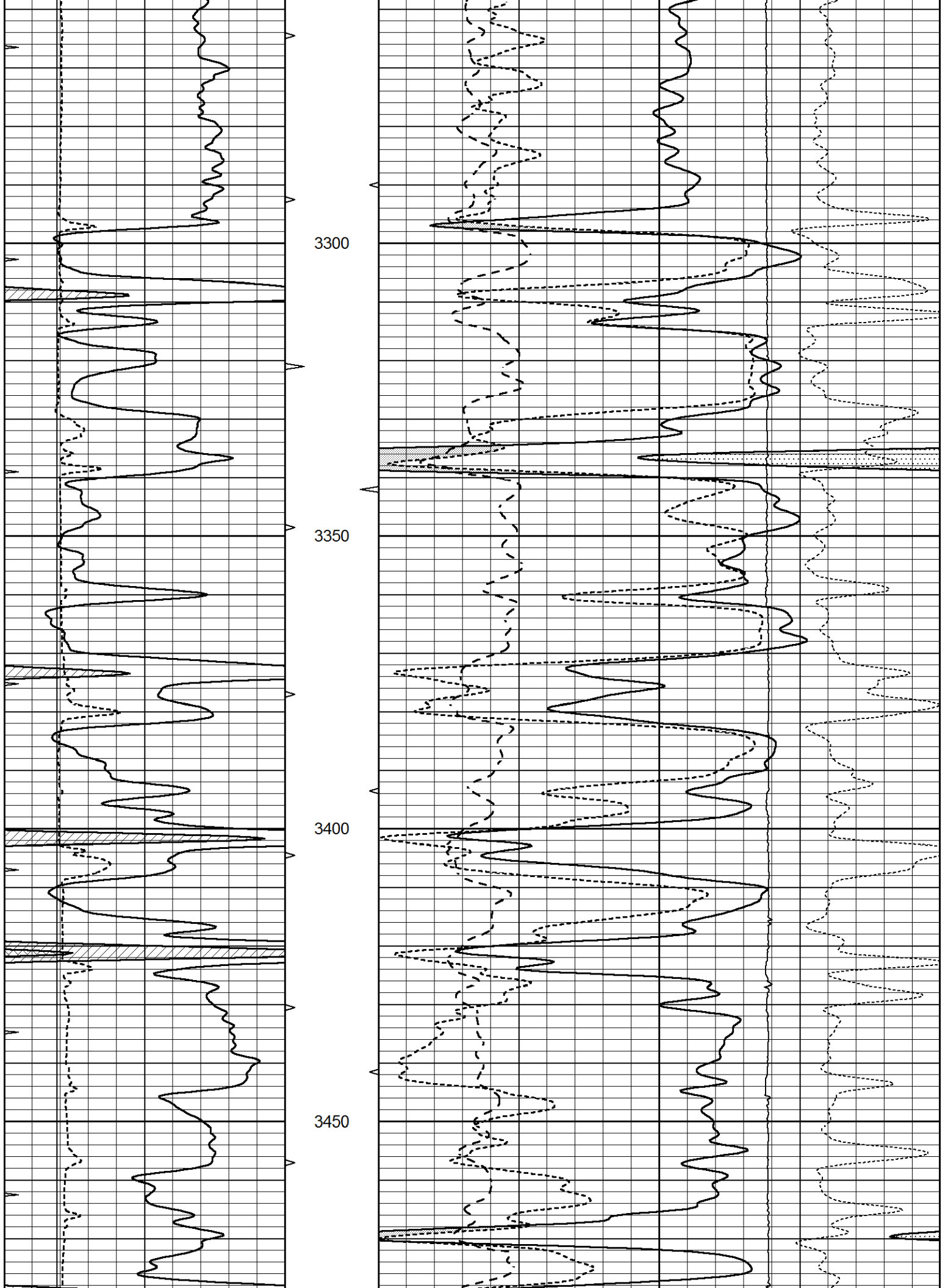


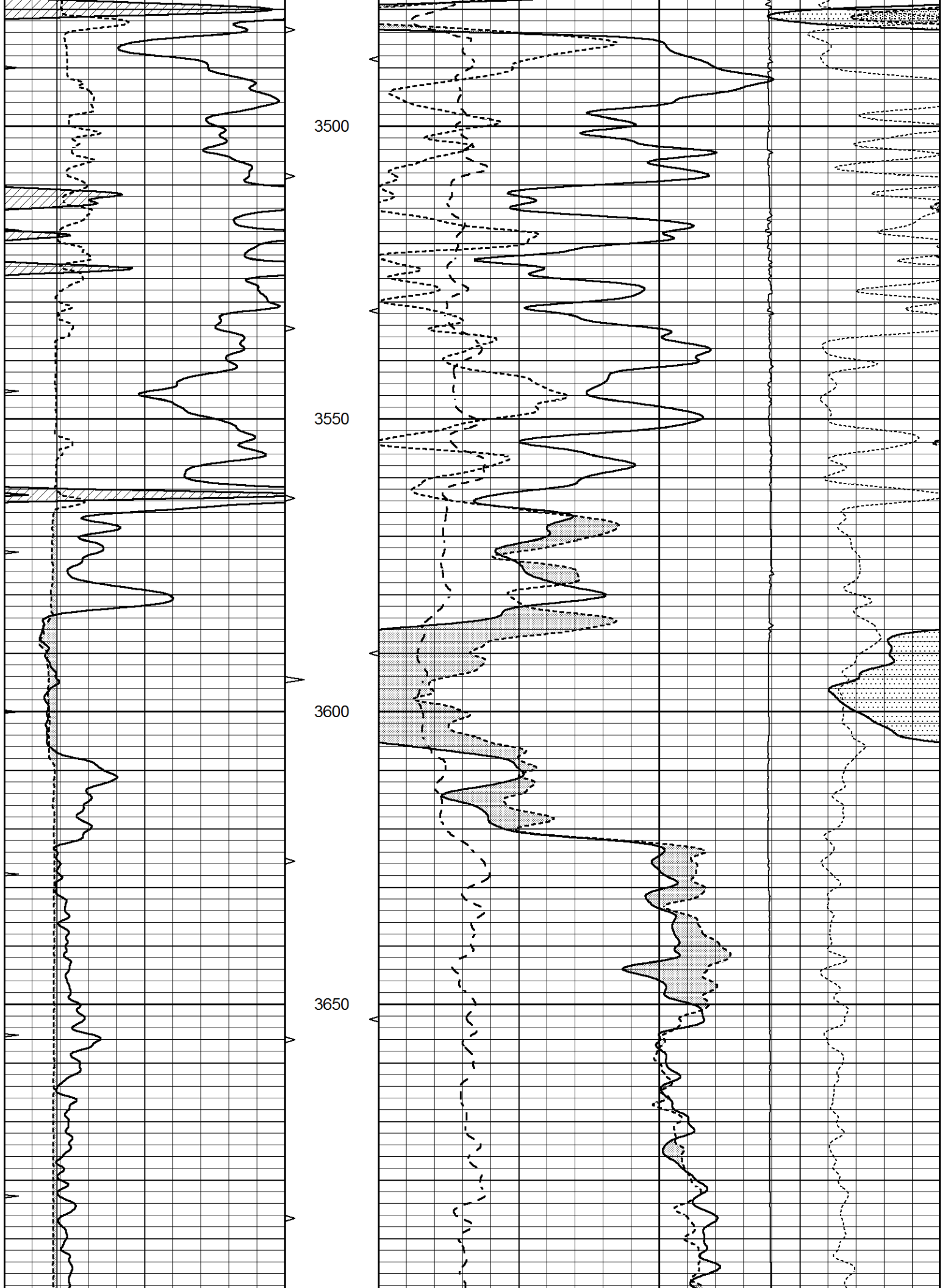


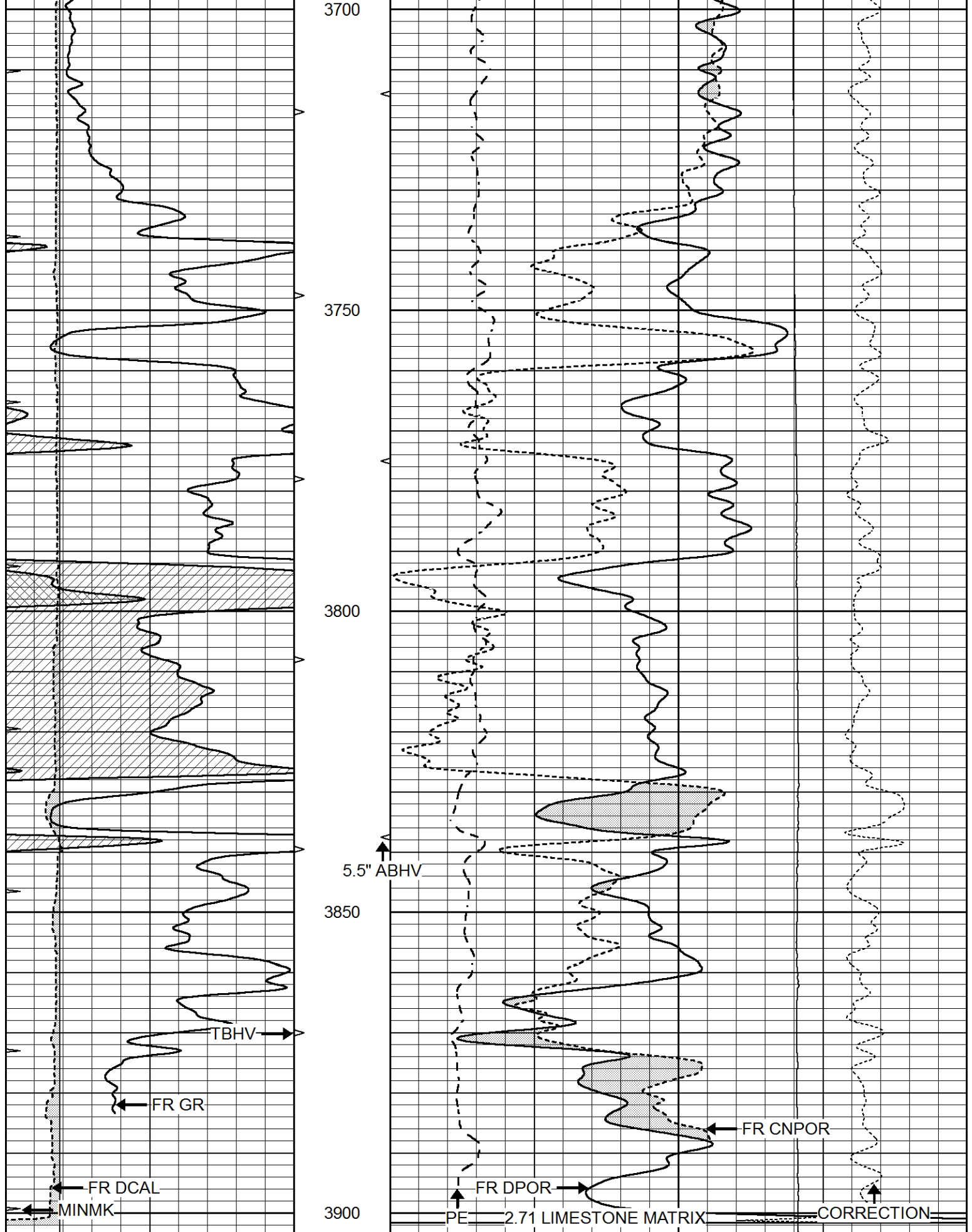












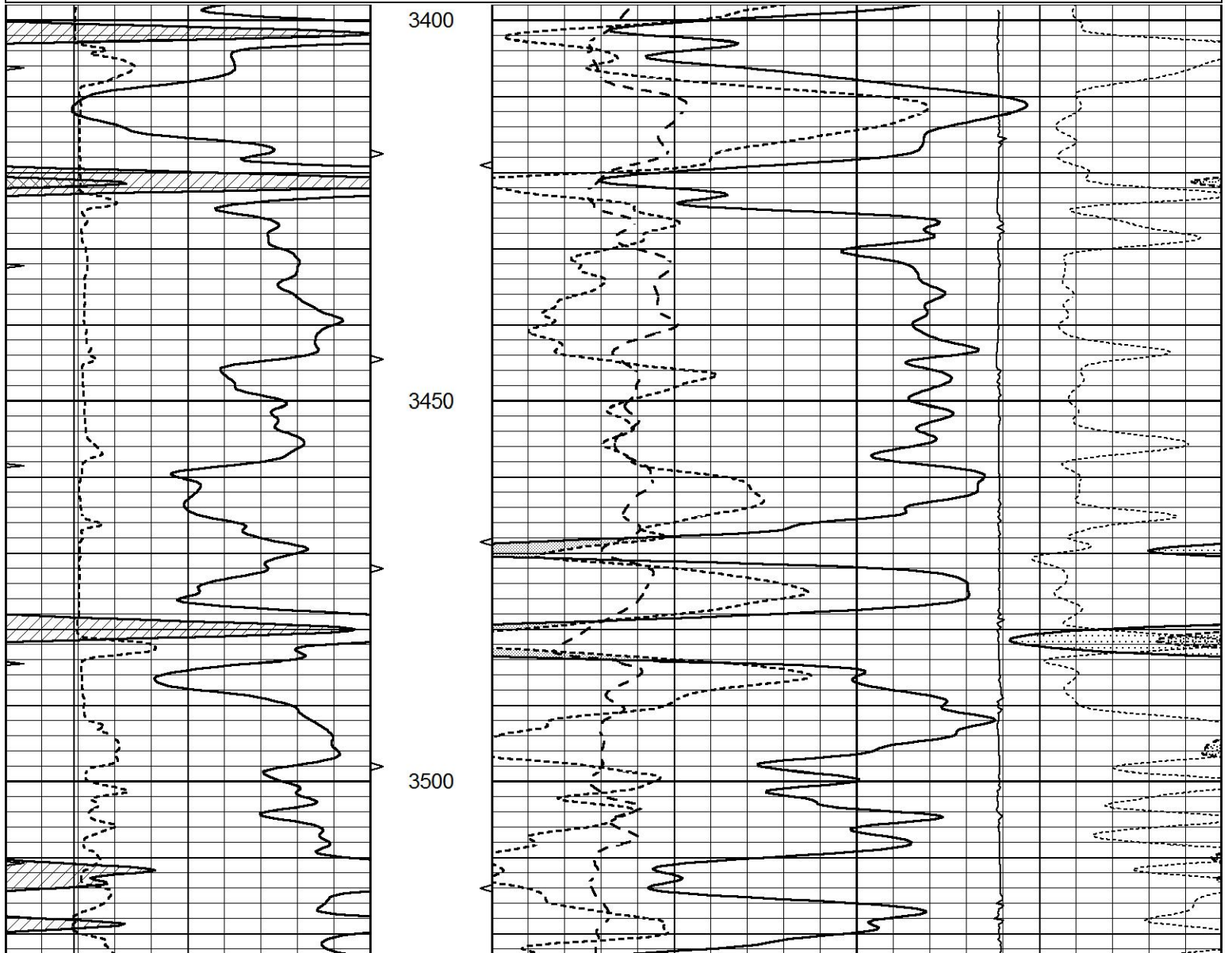
		LTD 3920		LTEN →	
0	GAMMA RAY (GAPI)	150	ABHV	30	COMPENSATED DENSITY (pu) -10
6	CALIPER (in)	16	10 (ft3) 0	30	COMPENSATED NEUTRON (pu) -10
0	MINMK	20	TBHV	0	PE 10 -0.25 CORRECTION (g/cc) 0.25
			0 (ft3) 10		0 LTEN (lb) 5000

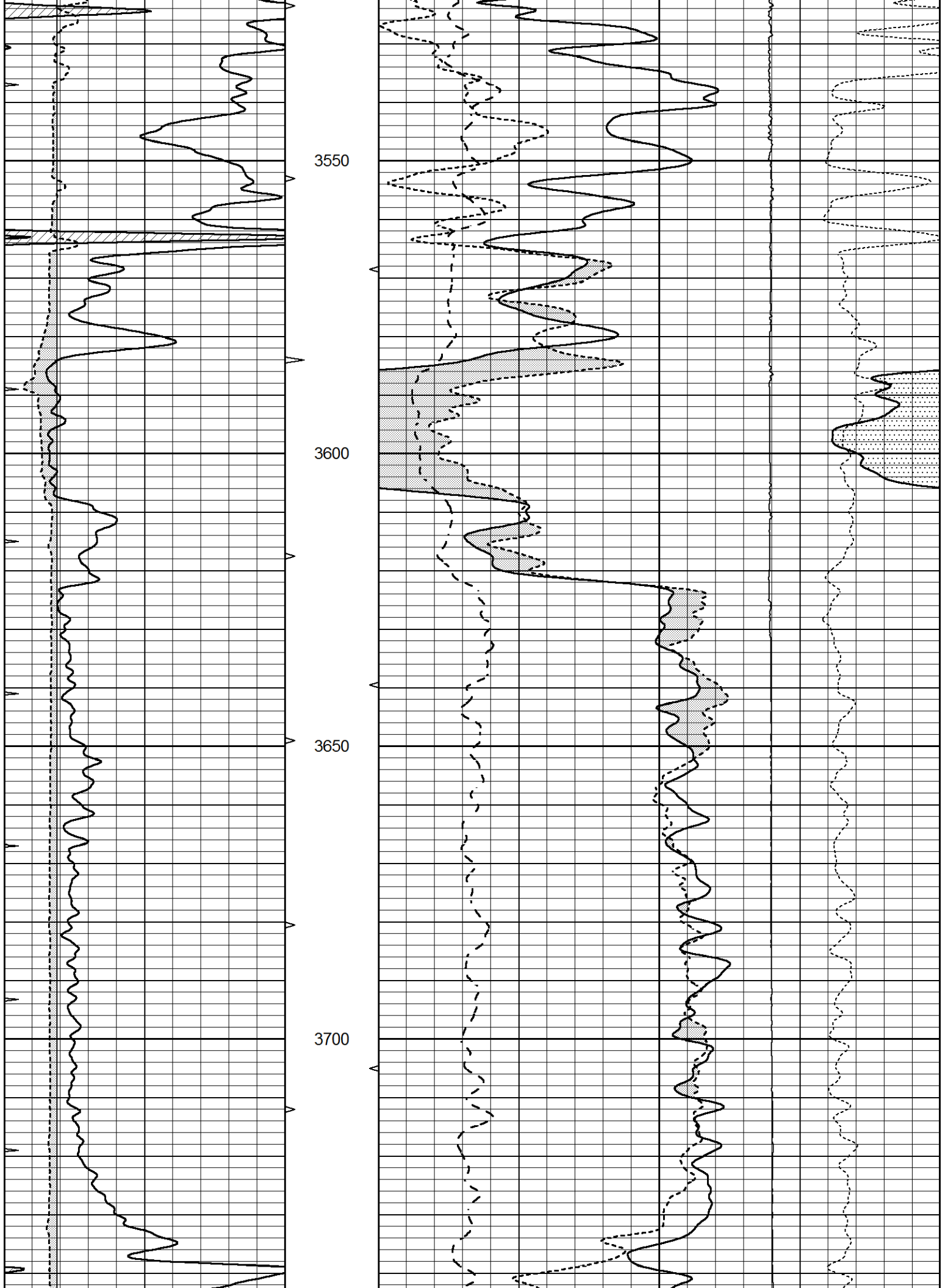


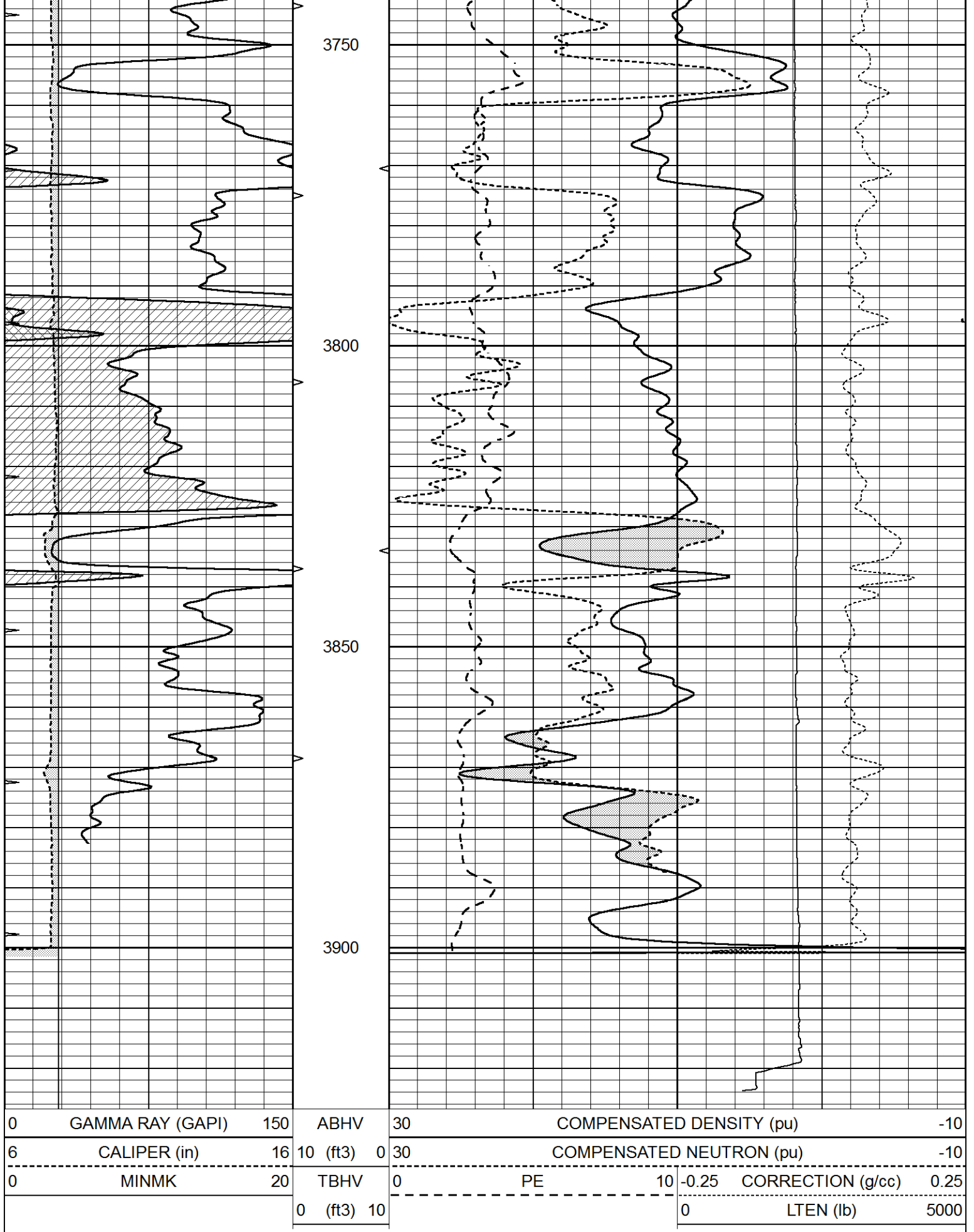
# REPEAT SECTION

Database File 6350pe.db  
 Dataset Pathname pass2.2R  
 Presentation Format ldt\_neu  
 Dataset Creation Mon Aug 08 23:30:44 2022  
 Charted by Depth in Feet scaled 1:240

0	GAMMA RAY (GAPI)	150	ABHV	30	COMPENSATED DENSITY (pu) -10
6	CALIPER (in)	16	10 (ft3) 0	30	COMPENSATED NEUTRON (pu) -10
0	MINMK	20	TBHV	0	PE 10 -0.25 CORRECTION (g/cc) 0.25
			0 (ft3) 10		0 LTEN (lb) 5000







0	GAMMA RAY (GAPI)	150	ABHV	30	COMPENSATED DENSITY (pu)	-10
6	CALIPER (in)	16	10 (ft3)	0 30	COMPENSATED NEUTRON (pu)	-10
0	MINMK	20	TBHV	0	PE	10 -0.25
			0 (ft3)	10		CORRECTION (g/cc) 0.25
						0 LTEN (lb) 5000

Calibration Report

### Dual Induction Calibration Report

Serial-Model: PROBE8-DILG  
 Surface Cal Performed: Fri Aug 05 13:11:07 2022  
 Downhole Cal Performed: Mon Jul 28 11:08:27 2008  
 After Survey Verification Performed: Mon Jul 28 11:08:27 2008

#### Surface Calibration

Loop:	Readings			References			Results	
	Air	Loop		Air	Loop		m	b
Deep	0.015	0.648	V	0.000	400.000	mmho/m	640.000	10.000
Medium	0.029	0.796	V	0.000	464.000	mmho/m	630.000	0.000
Internal:	Zero	Cal		Zero	Cal		m	b
Deep	0.017	0.657	V	0.000	400.000	mmho/m	625.153	-10.619
Medium	0.016	0.757	V	0.000	464.000	mmho/m	625.992	-9.739

#### Downhole Calibration

	Readings			References			Results	
	Zero	Cal		Zero	Cal		m'	b'
Deep	0.000	0.000	mmho/m	2.011	405.777	mmho/m	1.000	0.000
Medium	0.000	0.000	mmho/m	7.590	503.393	mmho/m	1.000	0.000
LL3		7.500	V		1500.000	Ohm-m		
		0.000	V		20.000	Ohm-m		
		-7.200	V		3800.000	mmho-m		

#### After Survey Verification

	Readings			Targets			Results	
	Zero	Cal		Zero	Cal		m'	b'
Deep	0.000	0.000	mmho/m	0.000	0.000	mmho/m	0.000	0.000
Medium	0.000	0.000	mmho/m	0.000	0.000	mmho/m	0.000	0.000
LL3		1.000	Ohm-m		1.000	Ohm-m		
		0.000	Ohm-m		0.000	Ohm-m		
		1.000	mmho-m		1.000	mmho-m		

### Litho Density Calibration Report

Serial: 004 Model: PRB

#### Master Calibration

Performed Tue Aug 02 11:29:35 2022

	Background	Magnesium	Aluminum	Aluminum+Fe	
Window 1	1154.2	10019.5	3137.9	2795.6	cps
Window 2	1054.4	8597.6	2733.4	2469.5	cps
Window 3	902.3	5241.4	1832.1	1719.3	cps
Window 4	251.9	261.1	255.8	252.9	cps
Long Space	0.0	7543.2	1679.0	1415.0	cps
Short Space	4.4	2049.3	1321.7	1116.8	cps
Rho		1.7100	2.5900	0.0000	g/cc
Pe		2.0000	2.7500	5.7900	
Rib Angle	: 43.7	Rib Slope	: 0.957	Density/Spine Ratio	: 0.562
Spine Angle	: 73.7	Spine Slope	: 3.426	Spine Intercept	: -17.2

#### Before Survey Verification

Performed Wed Dec 31 18:00:00 1969

Window 1	0.0	0.0	0.0	0.0	cps
Window 2	0.0	0.0	0.0	0.0	cps
Window 3	0.0	0.0	0.0	0.0	cps
Window 4	0.0	0.0	0.0	0.0	cps
Long Space	0.0	0.0	0.0	0.0	cps
Short Space	0.0	0.0	0.0	0.0	cps
Measured Rho		0.0000	0.0000	0.0000	g/cc
Measured Correction		0.0000	0.0000	0.0000	g/cc
Measured Pe			0.0000	0.0000	

After Survey Verification

Performed Wed Dec 31 18:00:00 1969

Window 1	0.0	0.0	0.0	0.0	cps
Window 2	0.0	0.0	0.0	0.0	cps
Window 3	0.0	0.0	0.0	0.0	cps
Window 4	0.0	0.0	0.0	0.0	cps
Long Space	0.0	0.0	0.0	0.0	cps
Short Space	0.0	0.0	0.0	0.0	cps
Measured Rho		0.0000	0.0000	0.0000	g/cc
Measured Correction		0.0000	0.0000	0.0000	g/cc
Measured Pe			0.0000	0.0000	

Compensated Neutron Calibration Report

Serial Number: 070808PMC  
Tool Model: NABORS

PRE-SURVEY VERIFICATION

Detector	Readings	Measured	Target
Short Space	cps		
Long Space	cps	pu	pu

POST-SURVEY VERIFICATION

Detector	Readings	Measured	Target
Short Space	cps		
Long Space	cps	pu	pu

Gamma Ray Calibration Report

Serial Number: 070558  
Tool Model: OPEN\_GR  
Performed: Mon Aug 08 22:47:24 2022

Calibrator Value: 1.0 GAPI

Background Reading: 0.0 cps  
Calibrator Reading: 1.0 cps

Sensitivity: 0.2800 GAPI/cps