

SONIC  
LOG



Company McCOY PETROLEUM CORPORATION  
Well GRESSEL "A" #1-1  
Field BADGER CREEK  
County SUMNER  
State KANSAS

Company McCOY PETROLEUM CORPORATION  
Well GRESSEL "A" #1-1  
Field BADGER CREEK  
County SUMNER State KANSAS

Location: 330' FSL & 615' FEL  
W/2 - SE - SE - SE  
API #: 15-191-22850-0000  
Permanent Datum GROUND LEVEL Elevation 1238  
Log Measured From KELLY BUSHING 12' A.G.L.  
Drilling Measured From KELLY BUSHING  
SEC 1 TWP 34S RGE 1E  
Other Services  
CDL/CNL/PE  
DIL/MEI  
Elevation  
K.B. 1250  
D.F. 1248  
G.L. 1238

Date	8/8/22		
Run Number	TWO		
Depth Driller	3920		
Depth Logger	3920		
Bottom Logged Interval	3912		
Top Log Interval	200		
Casing Driller	8 5/8"@251'		
Casing Logger	251		
Bit Size	7 7/8"		
Type Fluid in Hole	CHEMICAL MUD	CHLORIDES 1,900 PPM	
Density / Viscosity	9.4/53		
pH / Fluid Loss	9.0/10.8		
Source of Sample	FLOWLINE		
Rm @ Meas. Temp	.900@80F		
Rmf @ Meas. Temp	.675@80F		
Rmc @ Meas. Temp	1.08@90F		
Source of Rmf / Rmc	MEASUREMENT		
Rm @ BHT	.626@115F		
Time Circulation Stopped	10 HOURS		
Time Logger on Bottom	11:30 P.M.		
Maximum Recorded Temperature	115F		
Equipment Number	922339		
Location	HAYS, KANSAS		
Recorded By	JEFF LUEBBERS		
Witnessed By	DAVE WILLIAMS		

<<< Fold Here >>>

All interpretations are opinions based on inferences from electrical or other measurements and we cannot and do not guarantee the accuracy or correctness of any interpretation, and we shall not, except in the case of gross or willful negligence on our part, be liable or responsible for any loss, costs, damages, or expenses incurred or sustained by anyone resulting from any interpretation made by any of our officers, agents or employees. These interpretations are also subject to our general terms and conditions set out in our current Price Schedule.

15-191-22850-0000 Comments

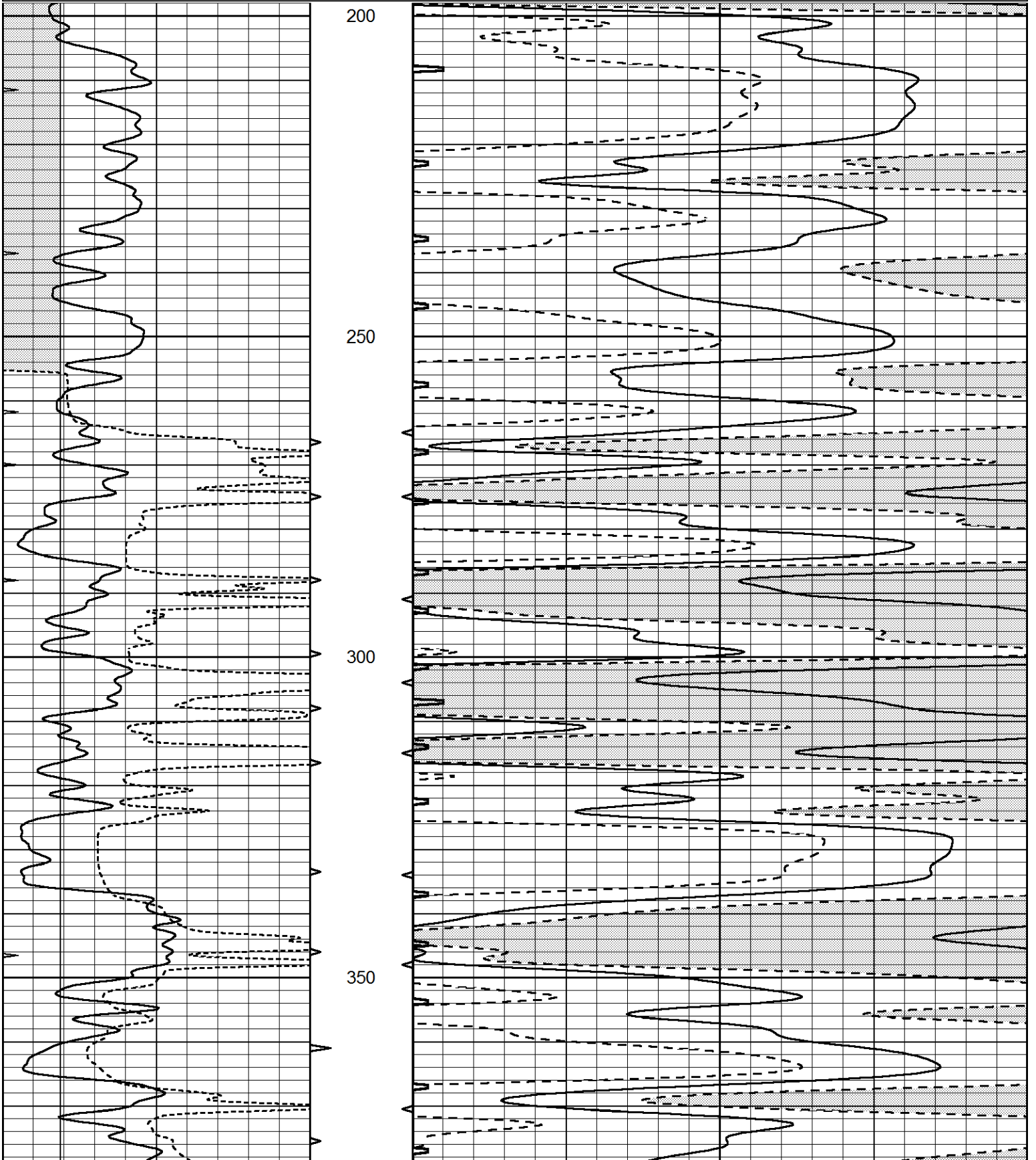
THANK YOU FOR USING ELI WIRELINE HAYS, KANSAS (785) 628-6395  
DIRECTIONS  
WICHITA, KS., S. ON I-35 TO EXIT 4, (HWY 166/SOUTH HAVEN), 3 1/2E. TO "S. OLIVER", 4N. TO "120TH ST.", 1E., N. INTO

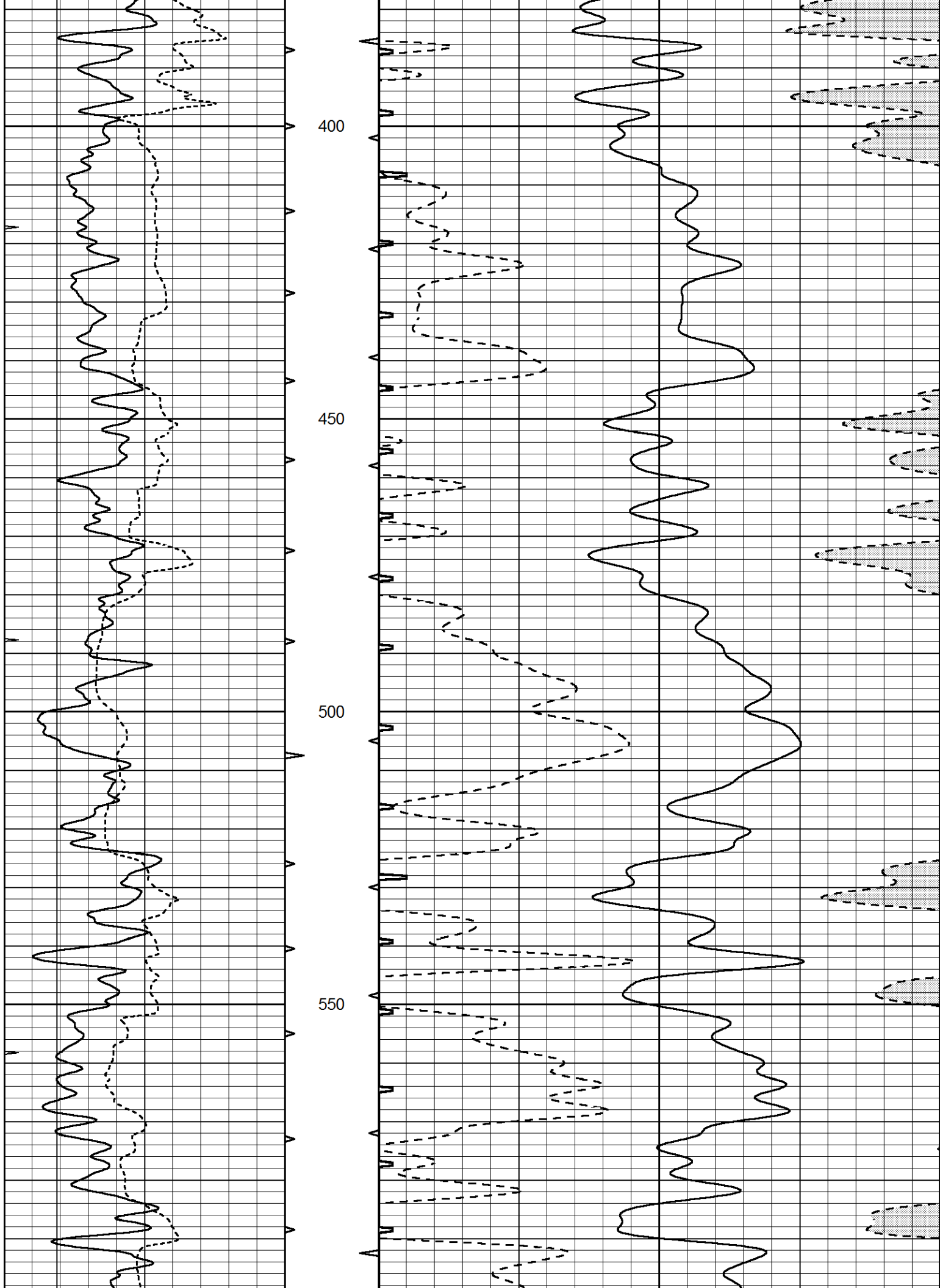


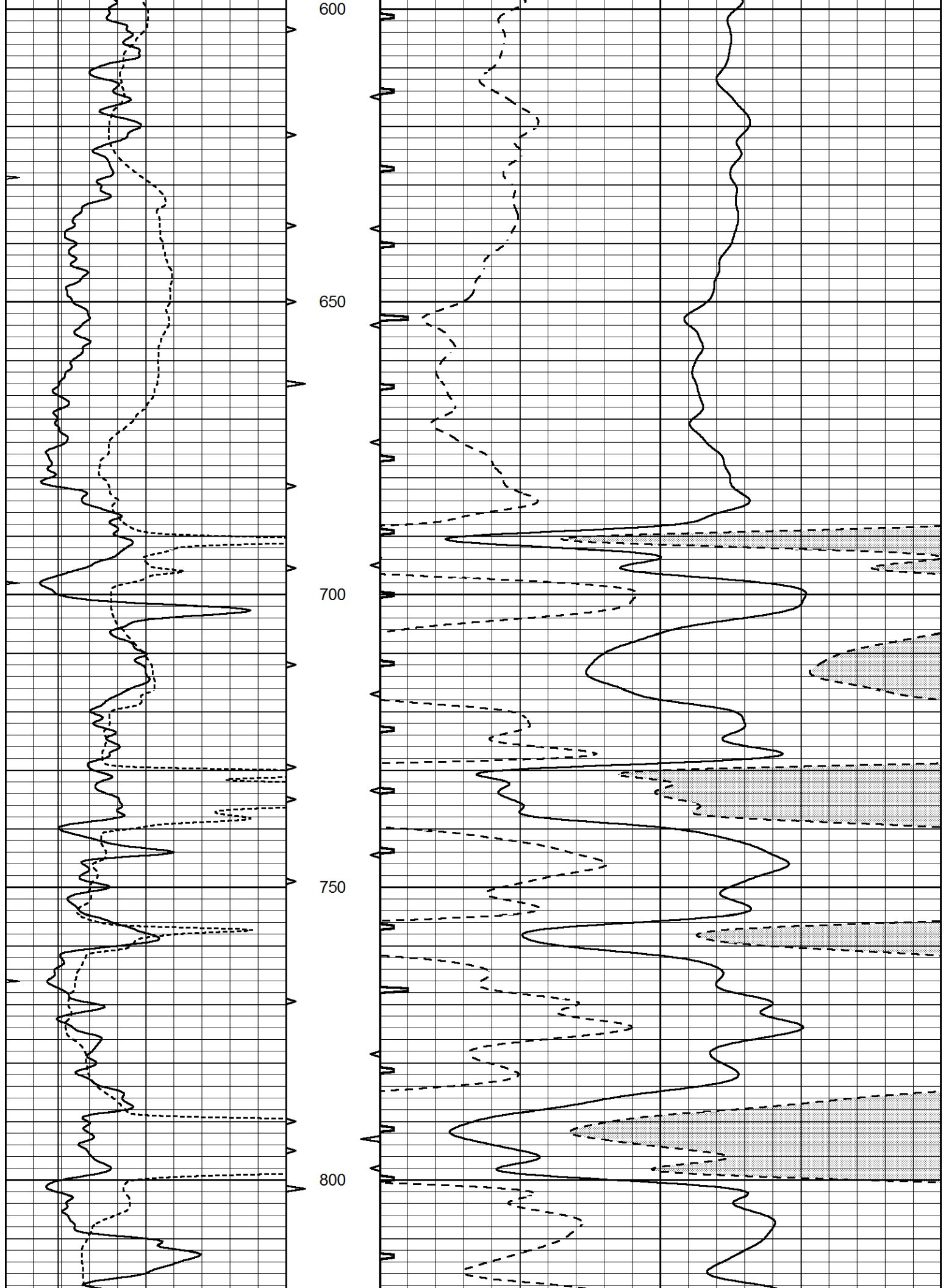
MAIN SECTION

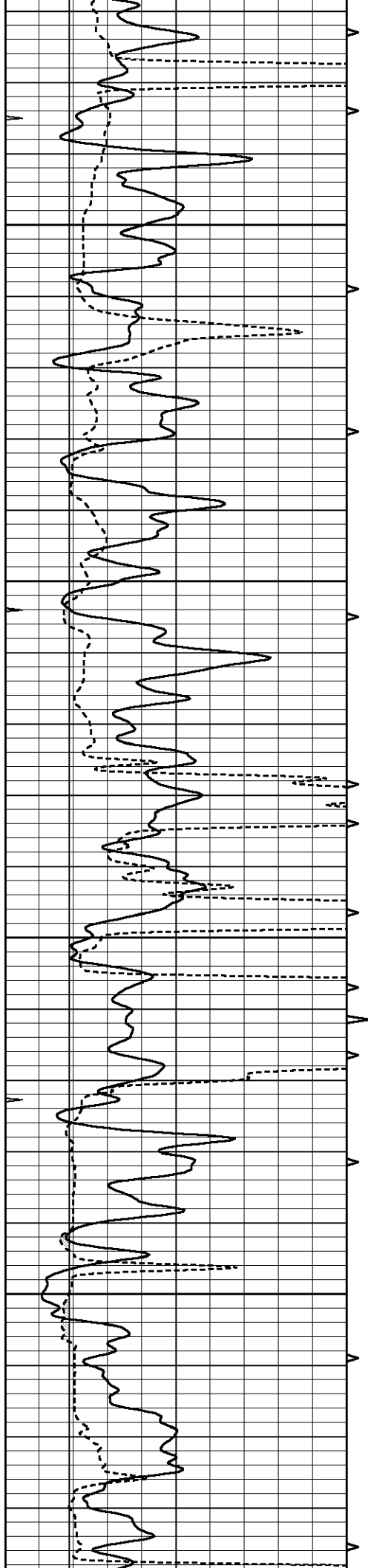
Database File 6350pe.db  
 Dataset Pathname pass6.7  
 Presentation Format slt  
 Dataset Creation Tue Aug 09 01:56:25 2022  
 Charted by Depth in Feet scaled 1:240

0	GAMMA RAY (GAPI)	150	ABHV	140	DELTA TIME (usec/ft)	40	
6	CALIPER (in)	16	10 (ft3)	0	30	SONIC POROSITY (pu)	-10
0	MINMK	20	TBHV	0	ITT (msec)	20	
			0 (ft3)	10			







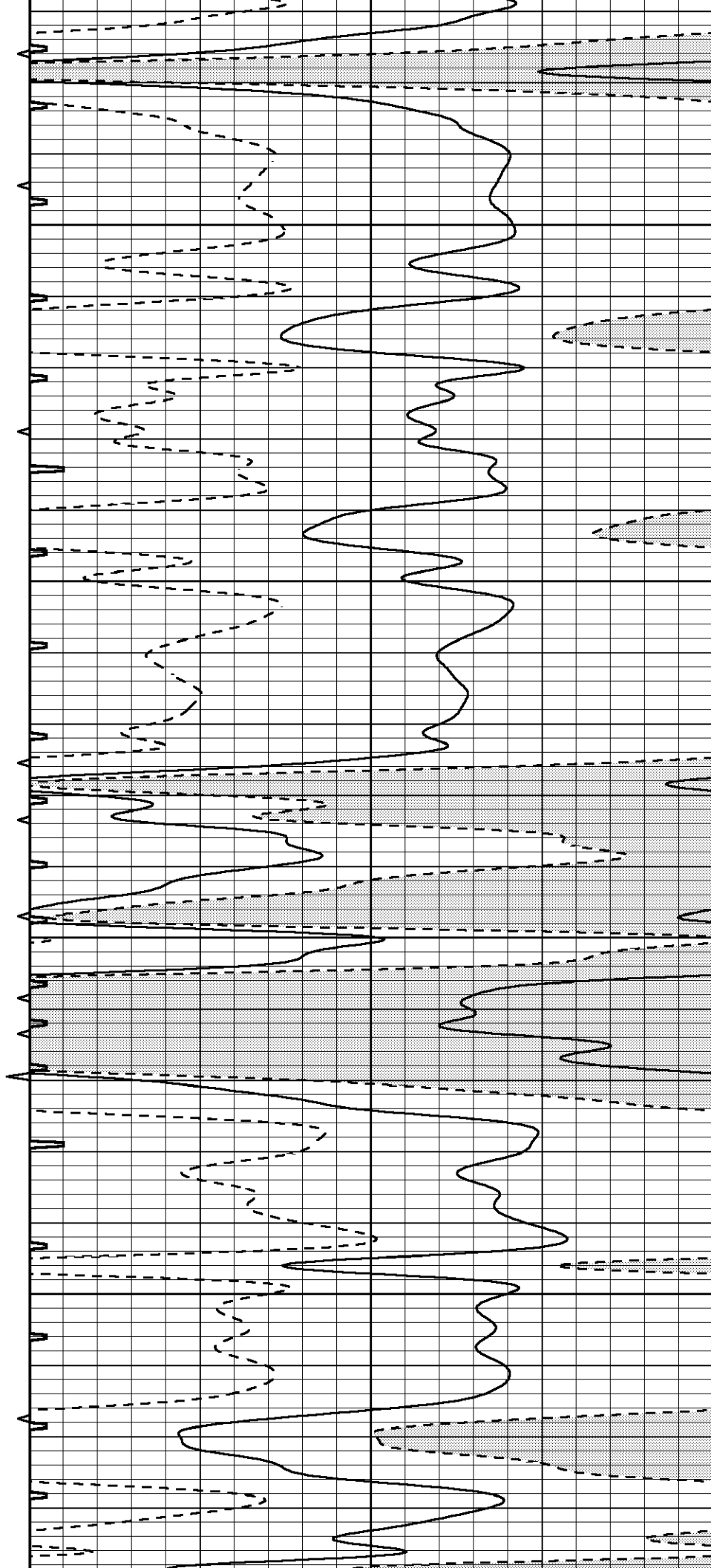


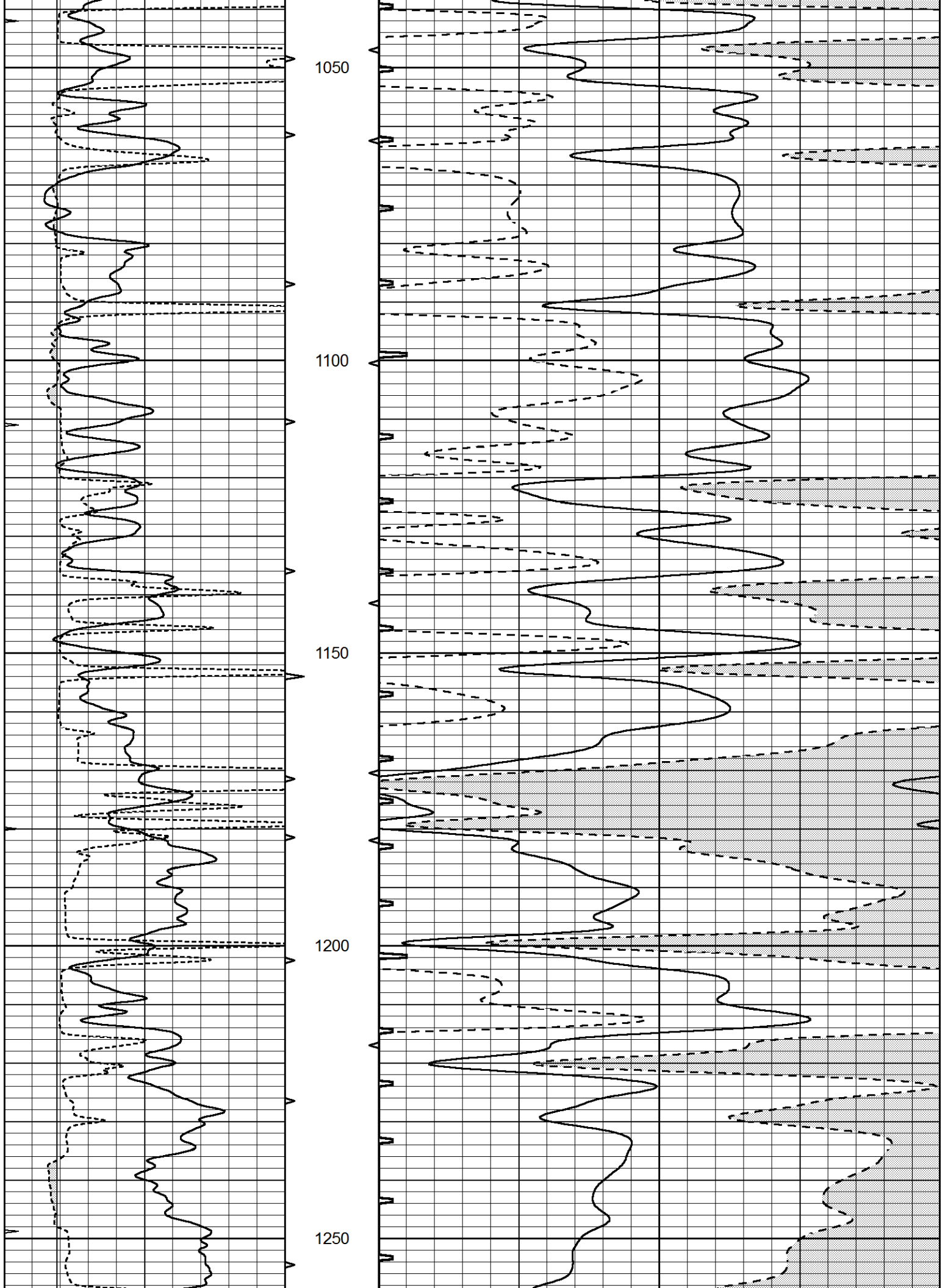
850

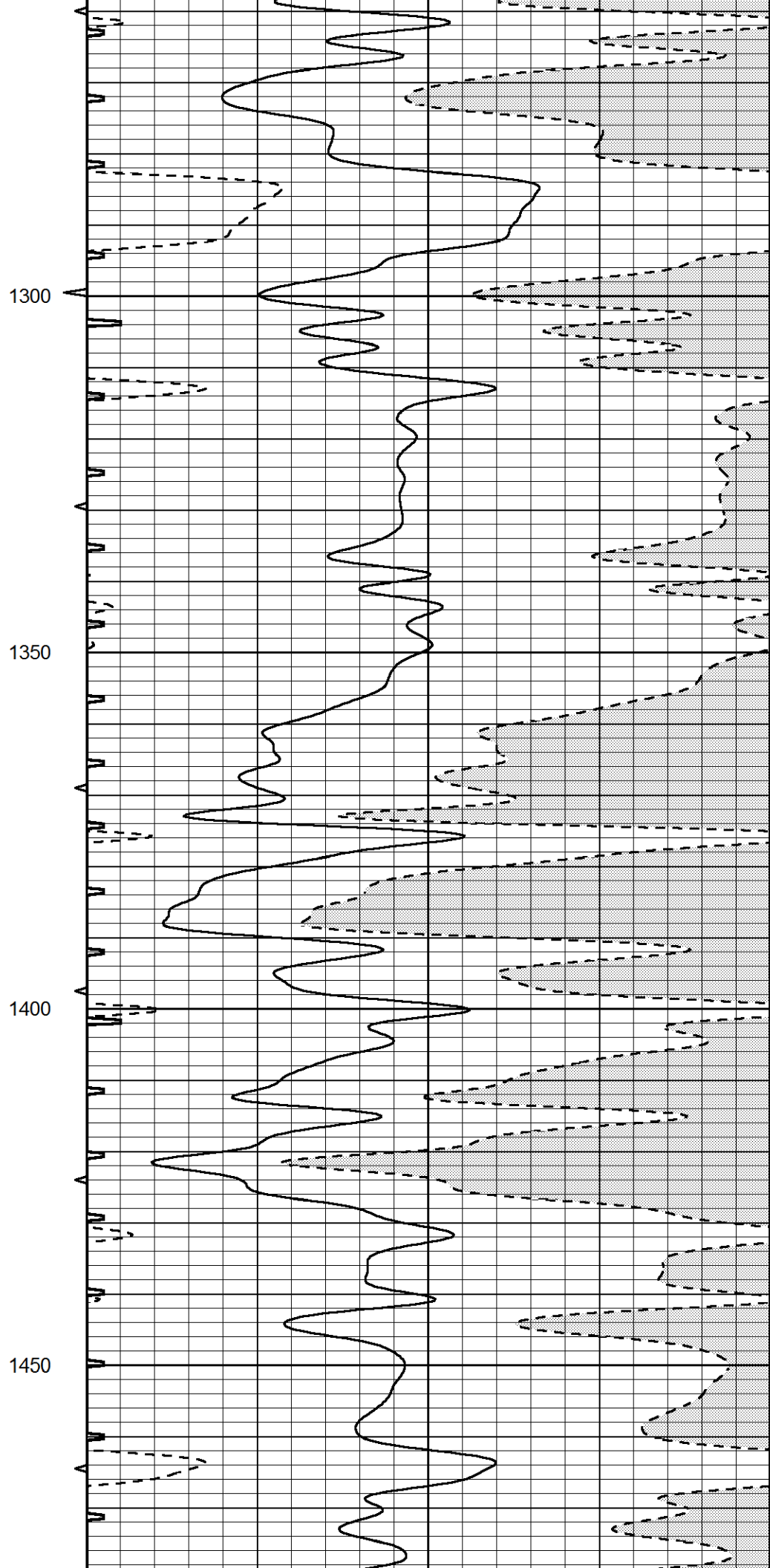
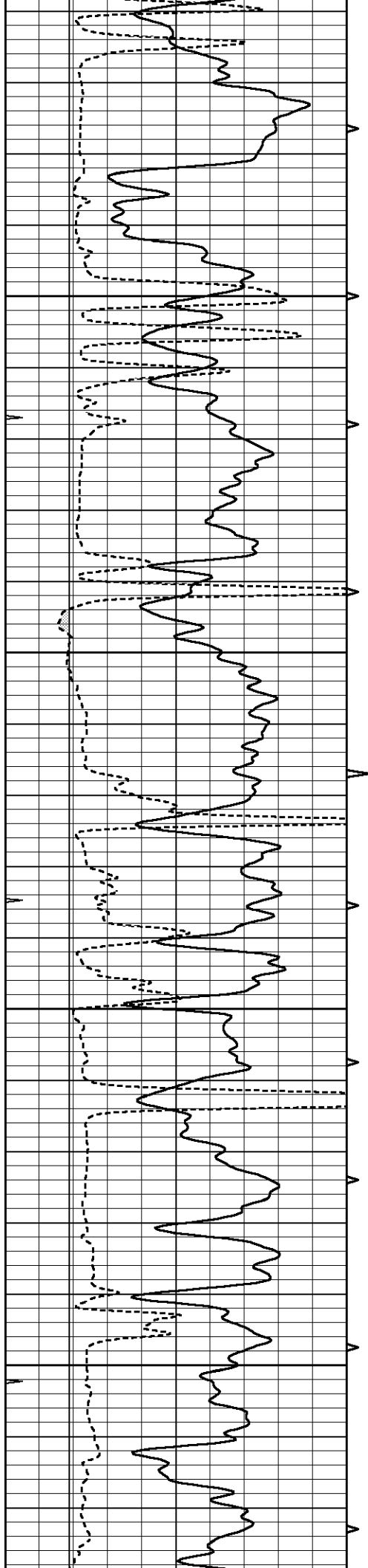
900

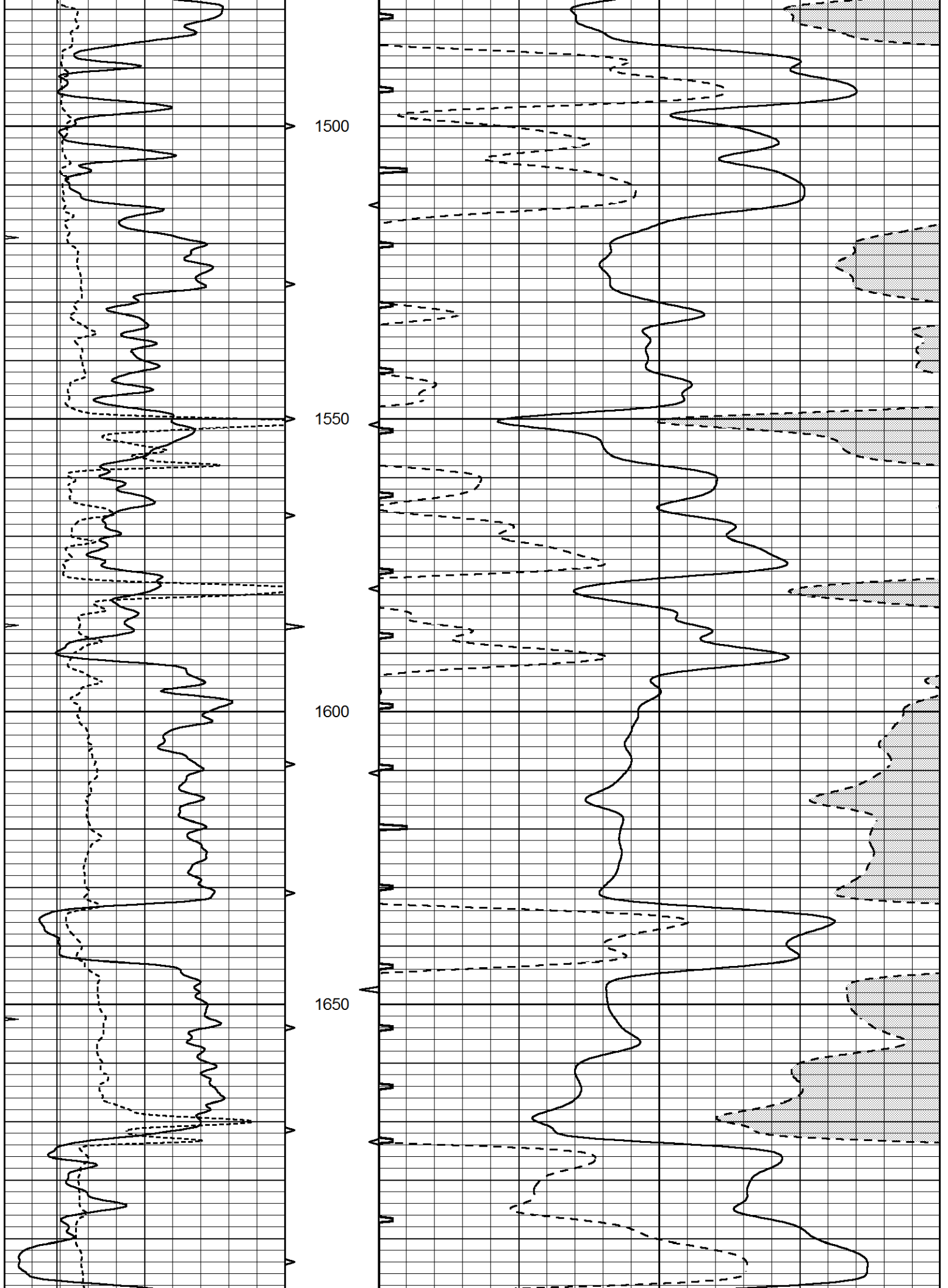
950

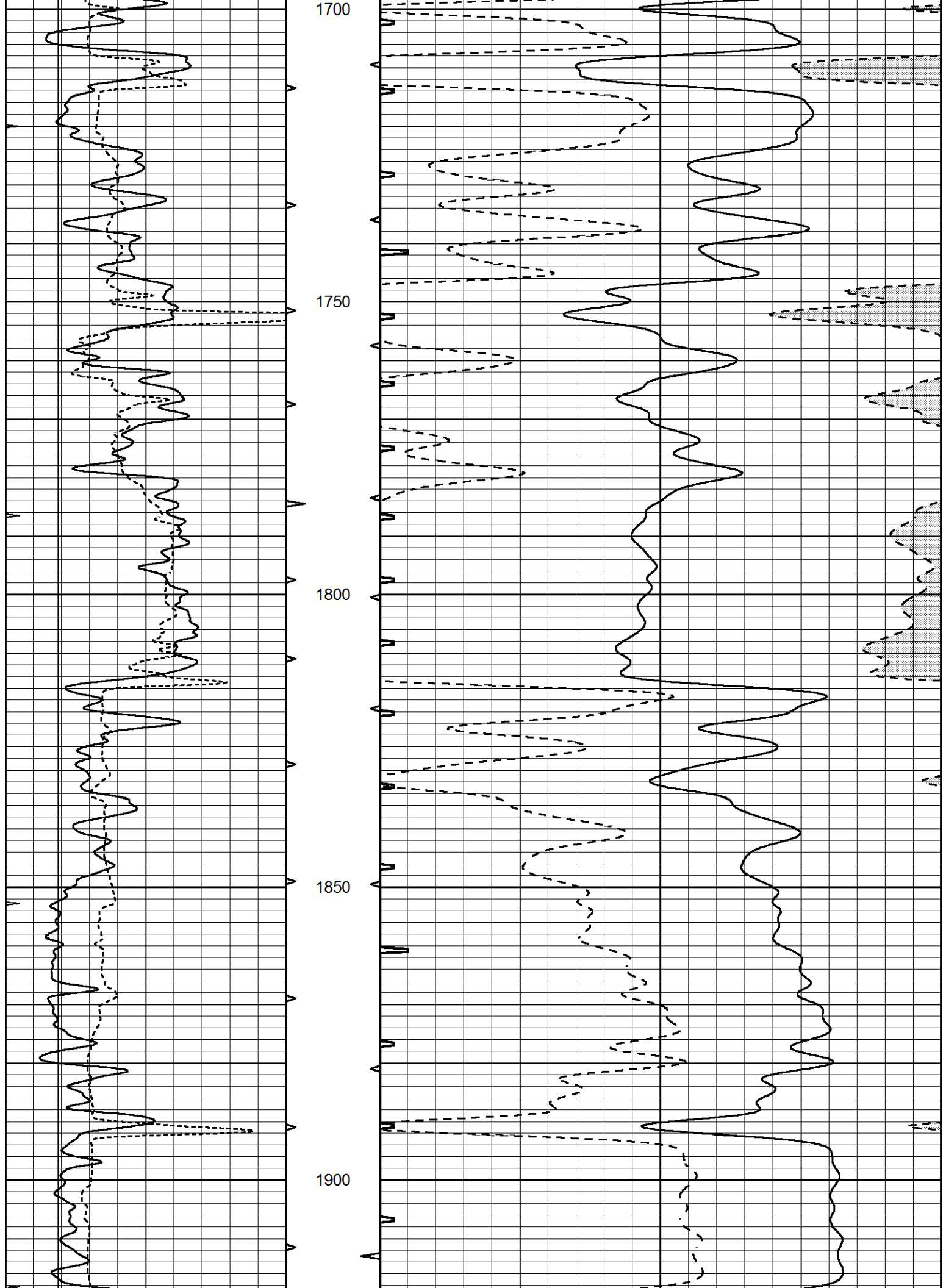
1000

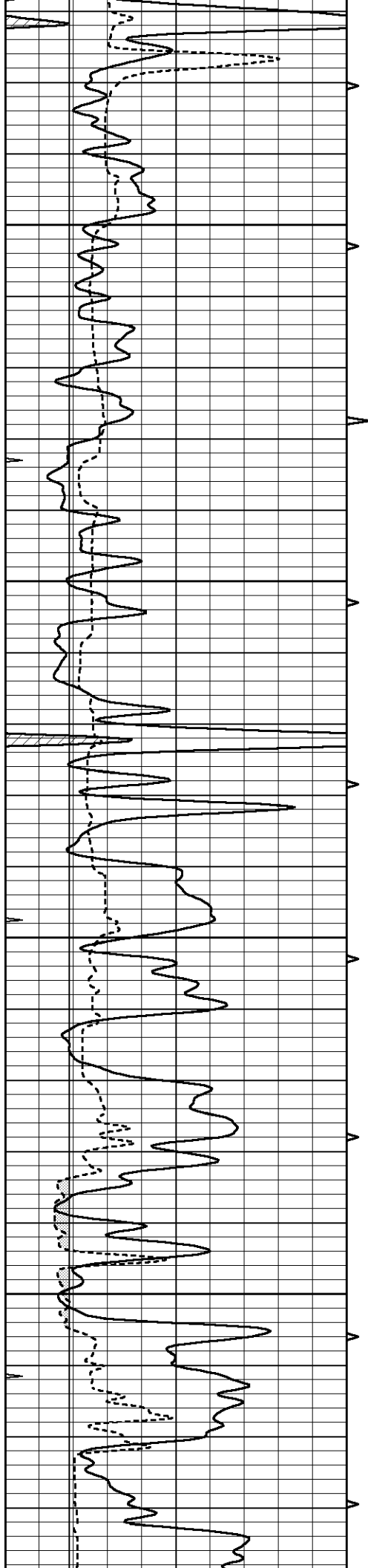










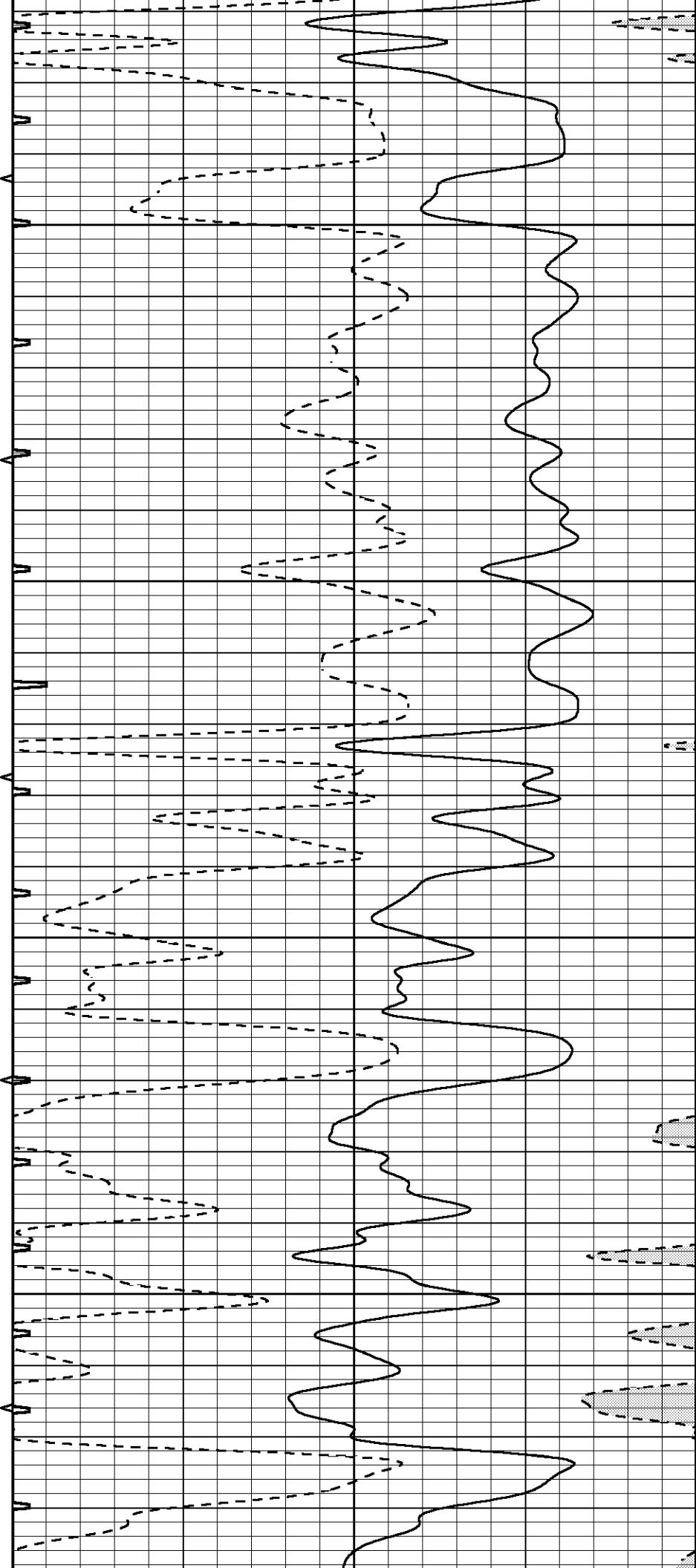


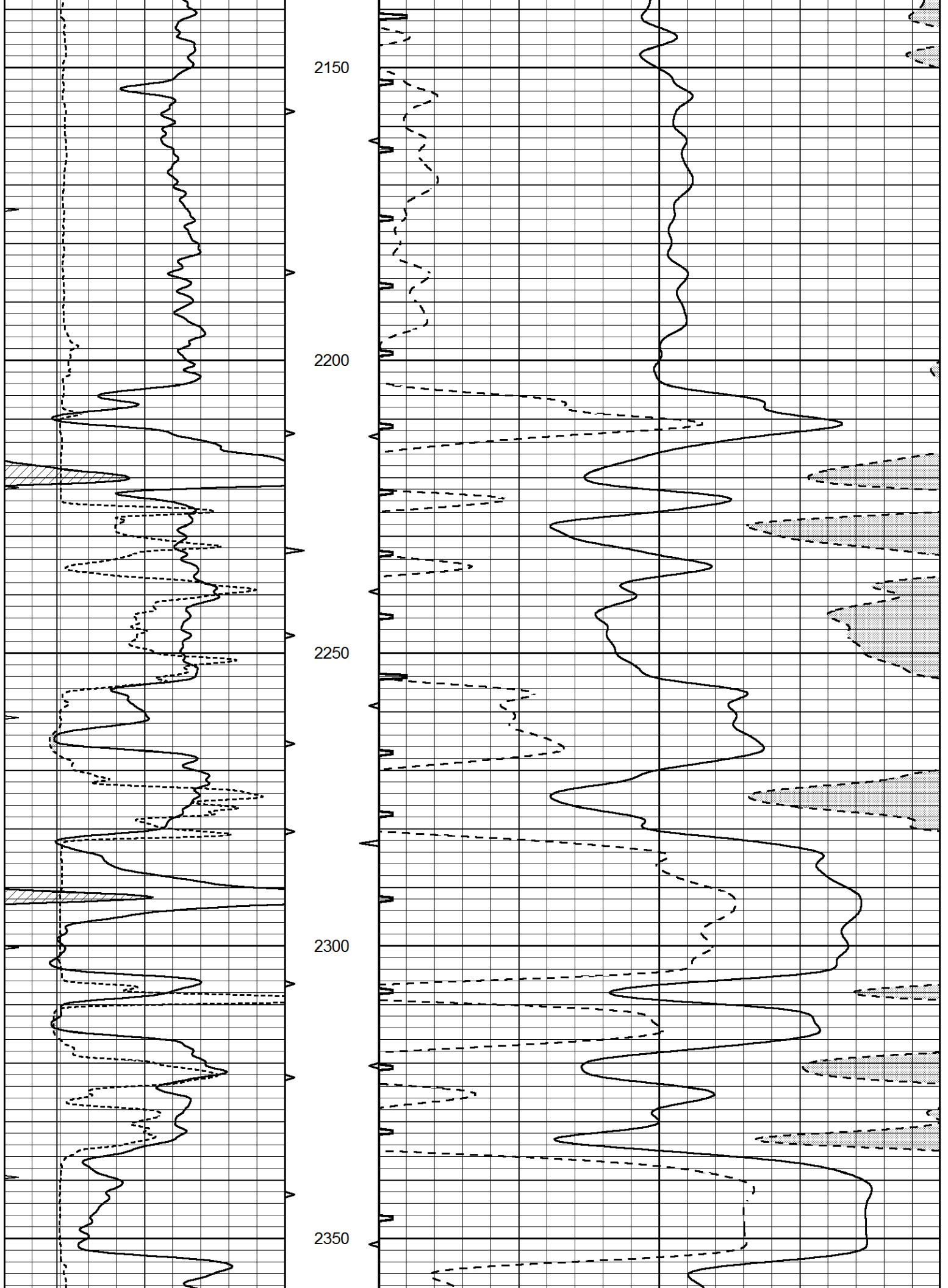
1950

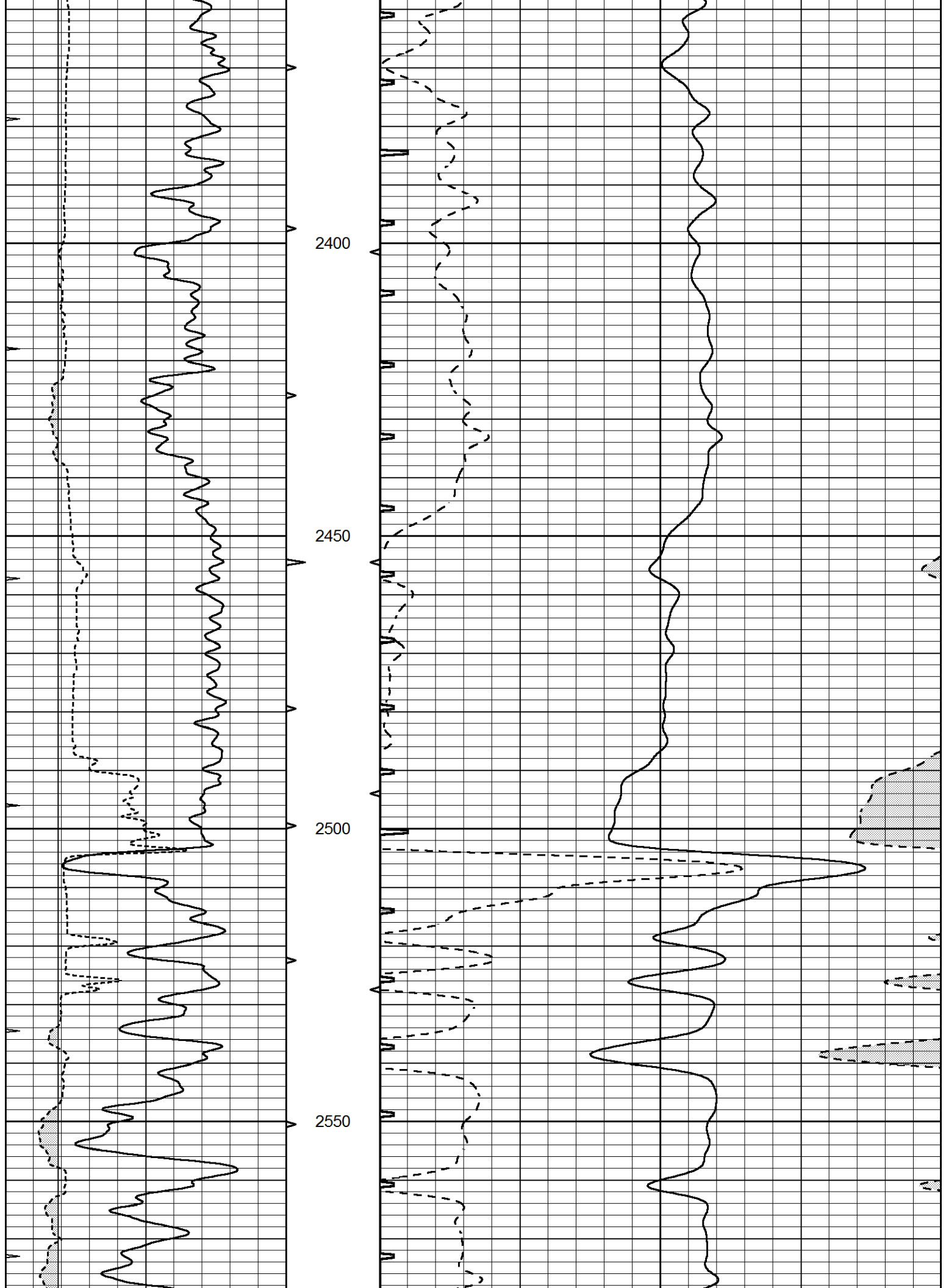
2000

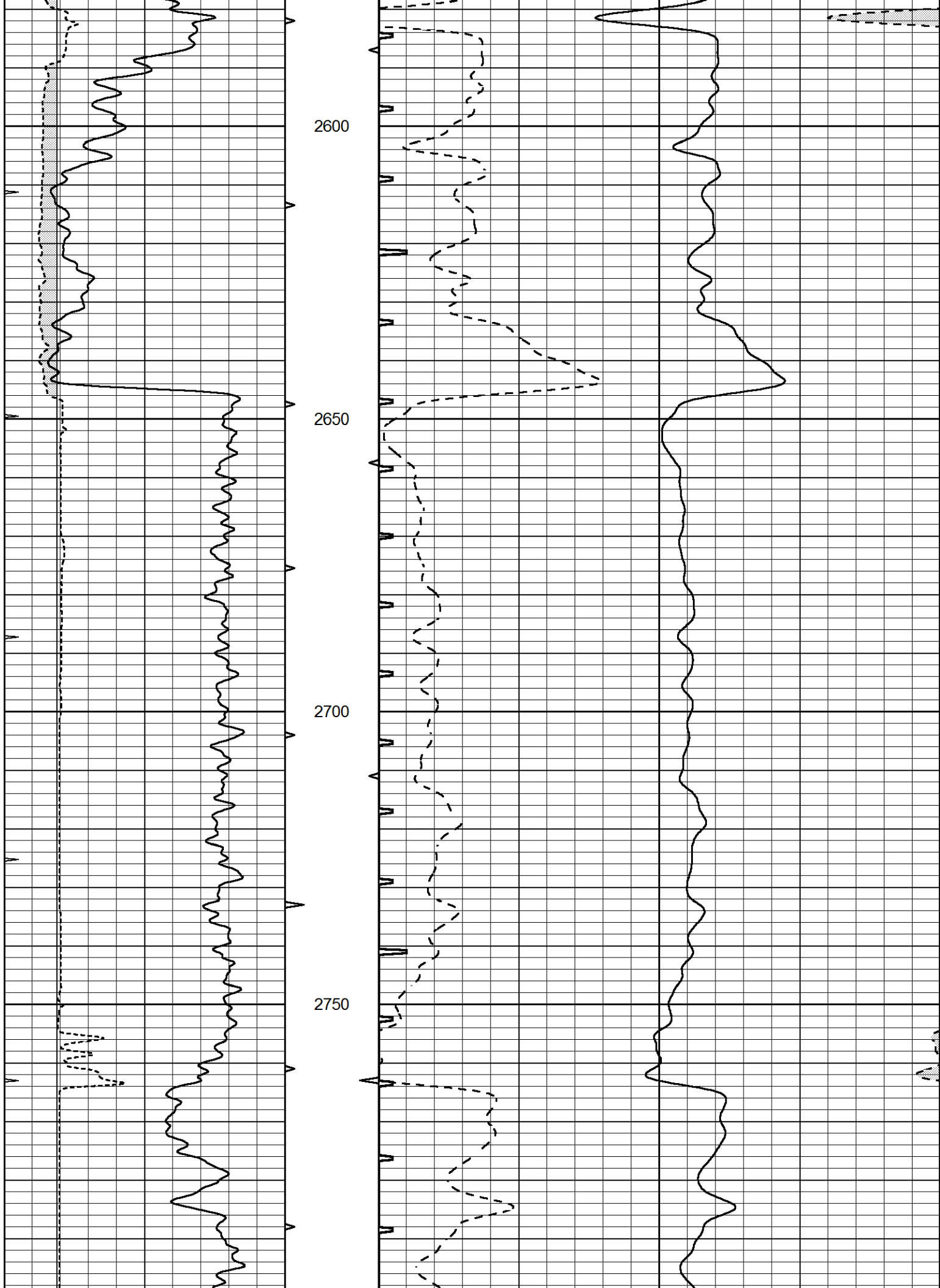
2050

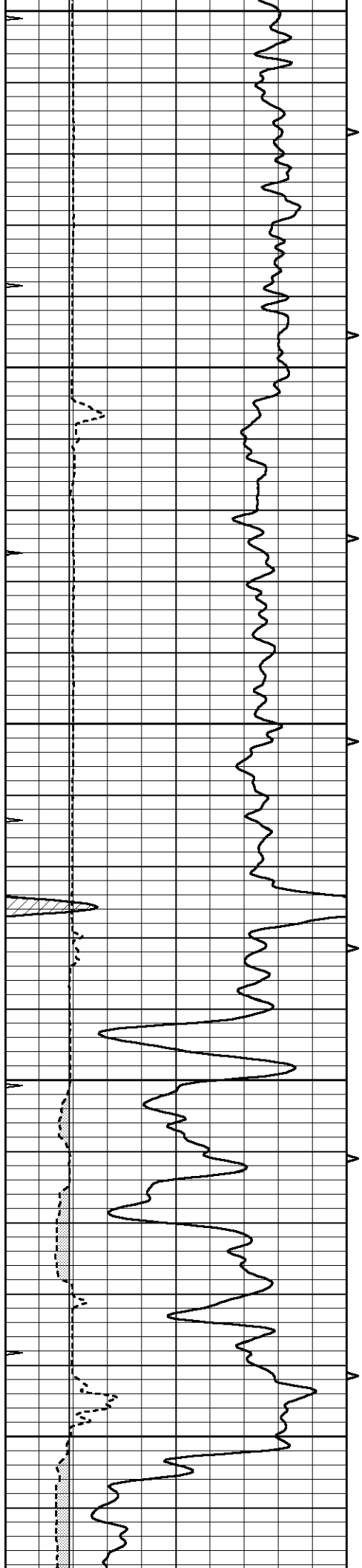
2100



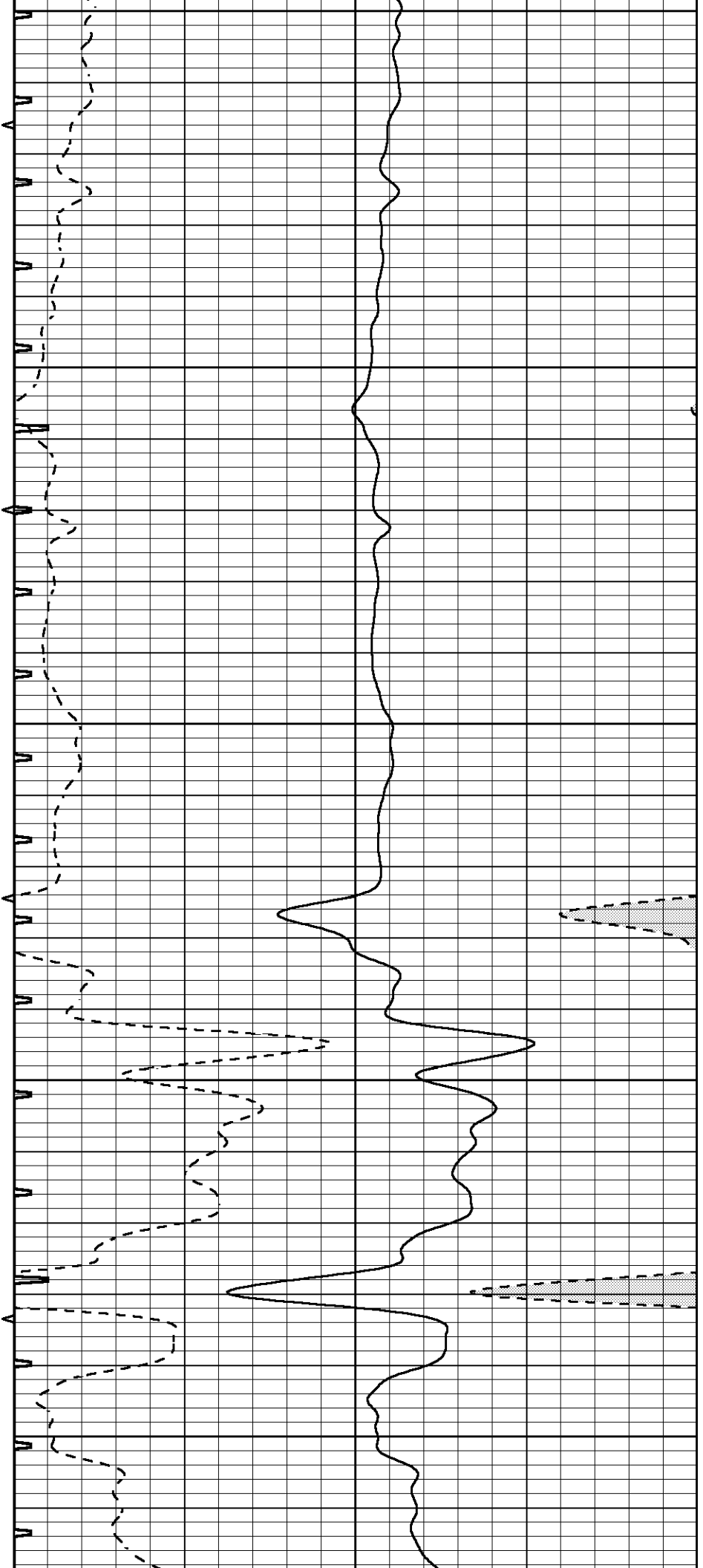


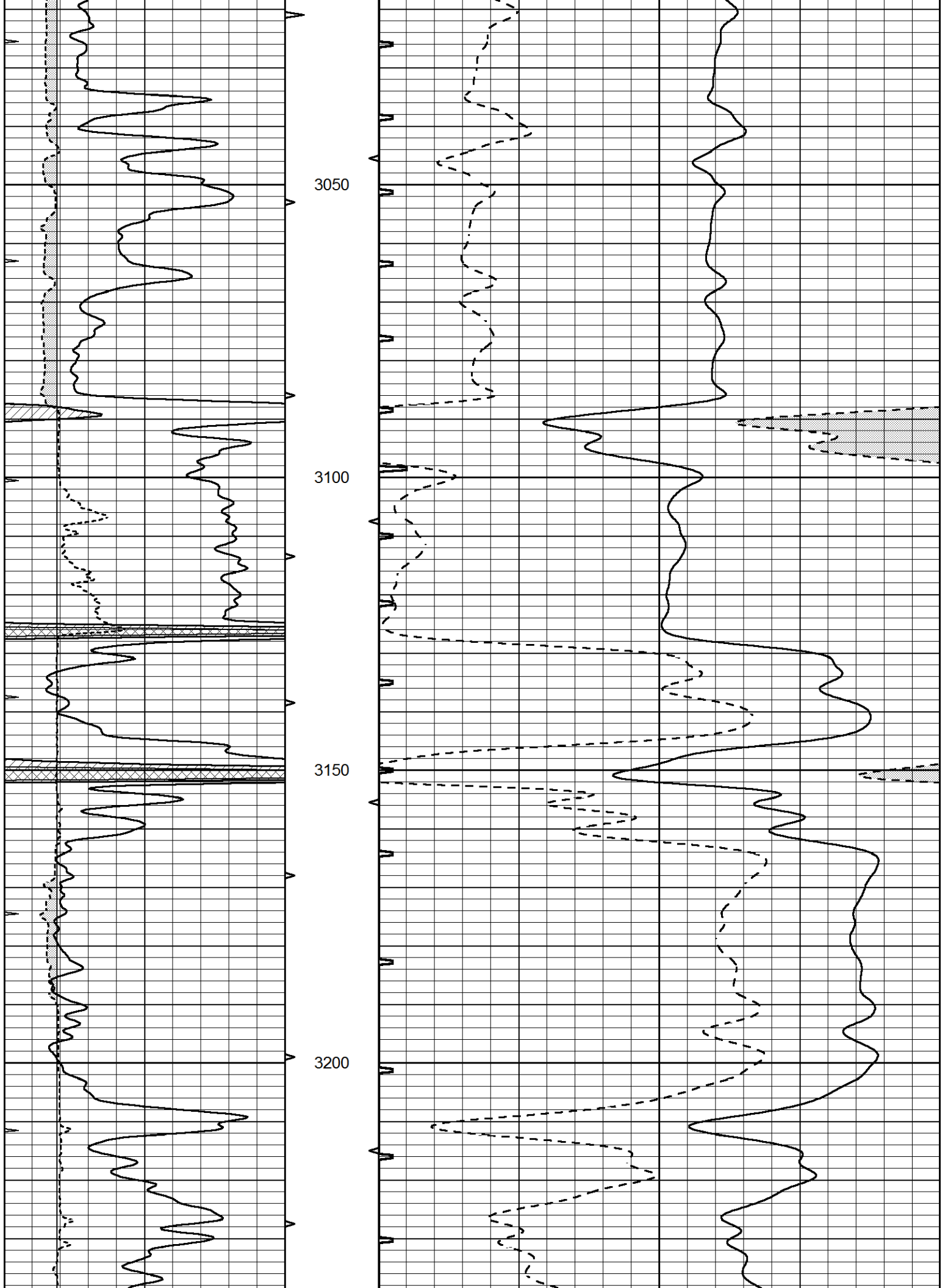


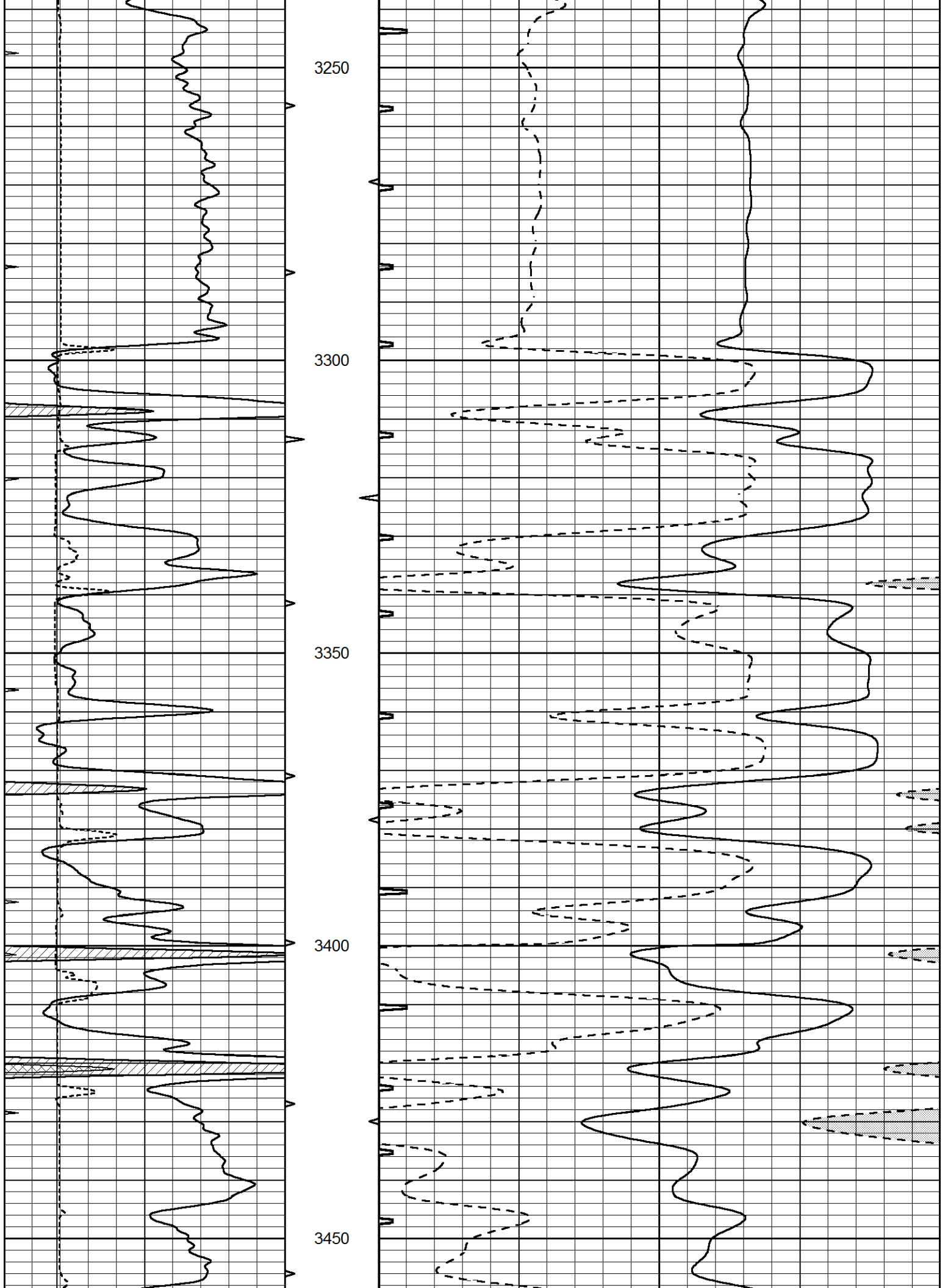


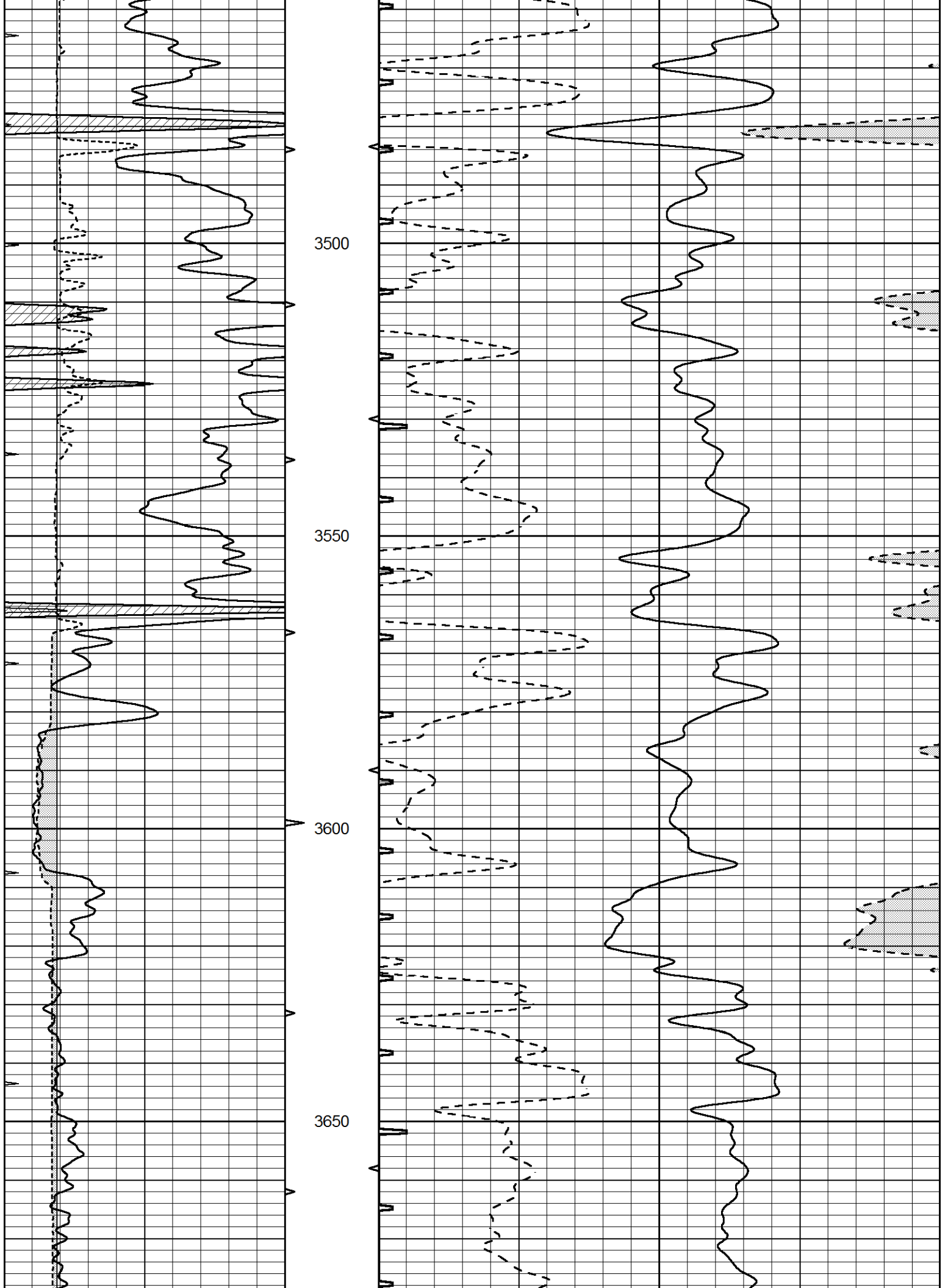


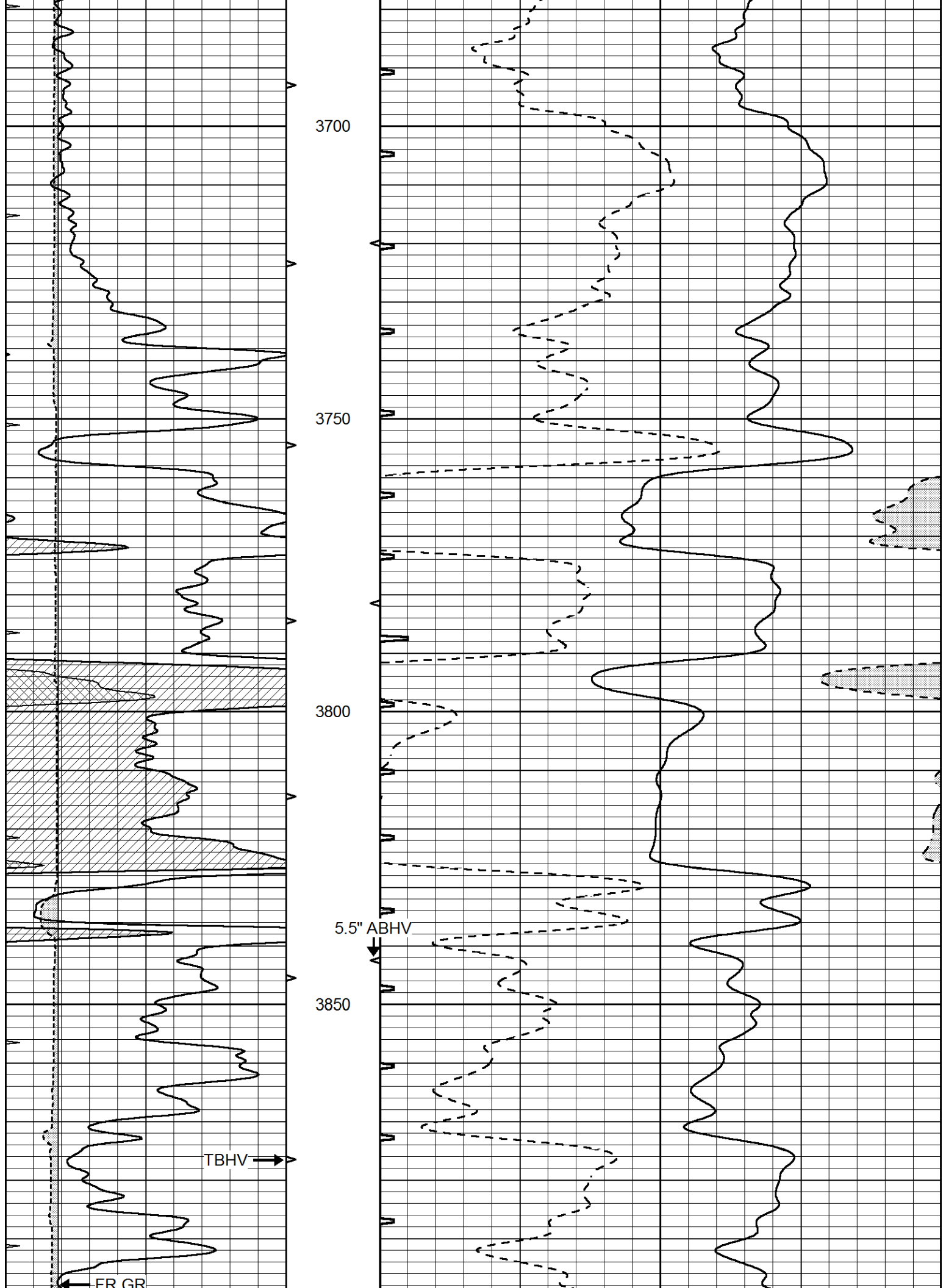
2800  
2850  
2900  
2950  
3000

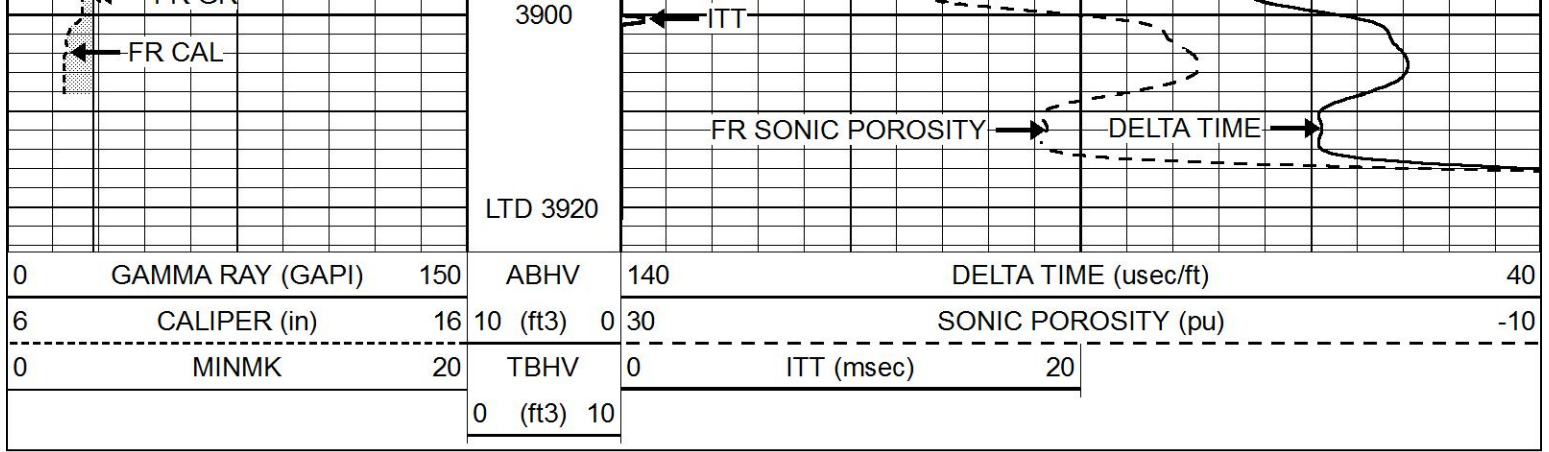






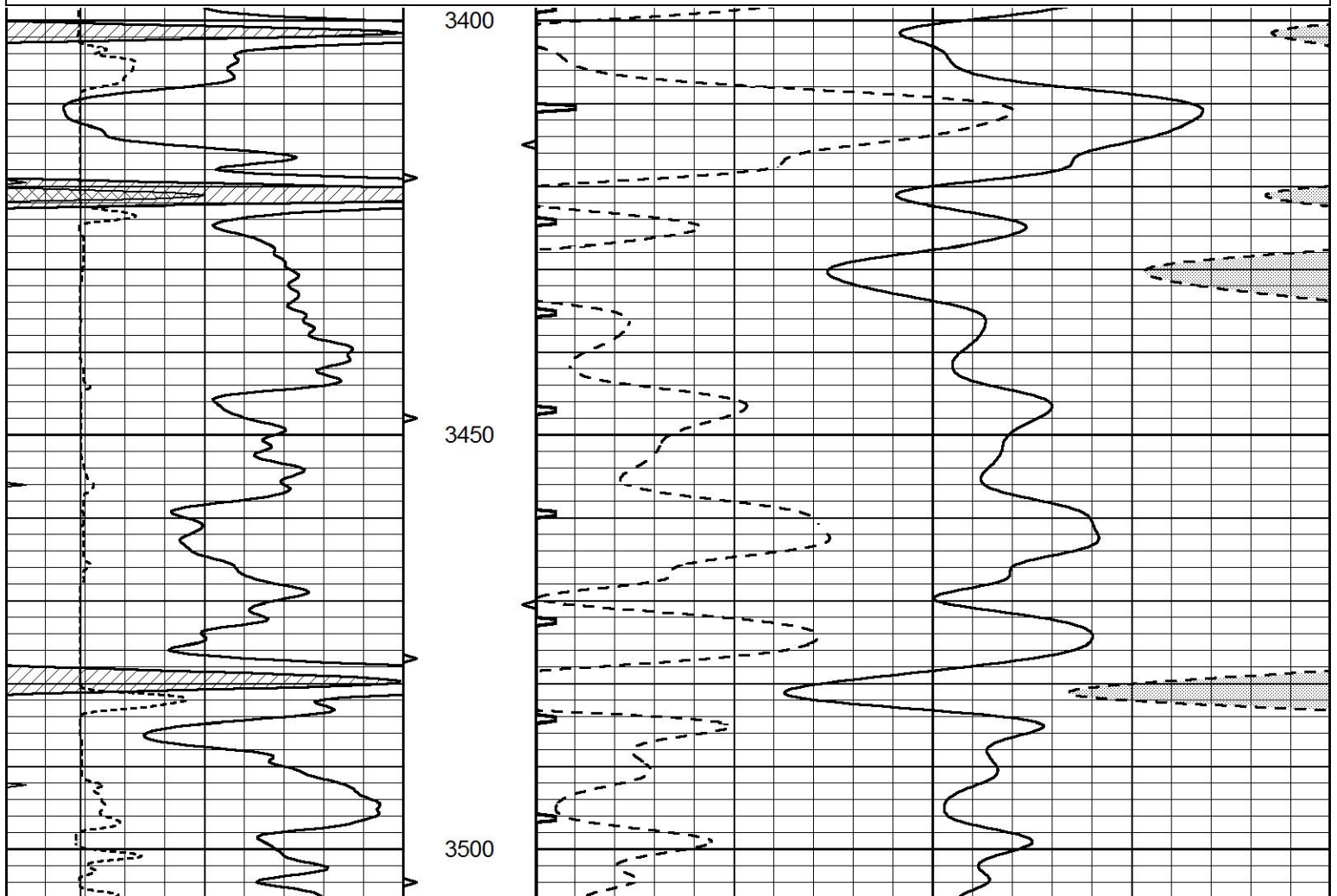
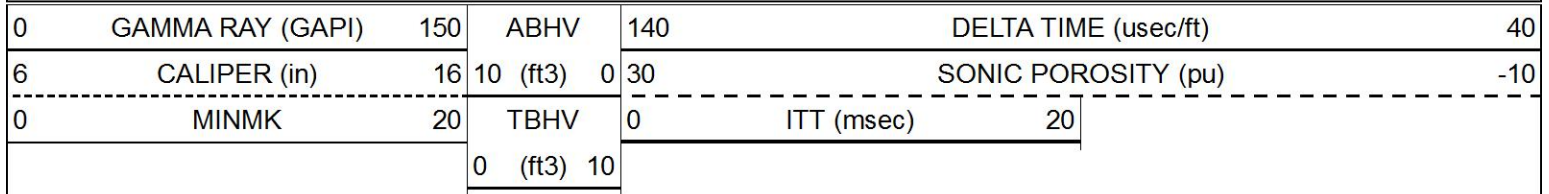


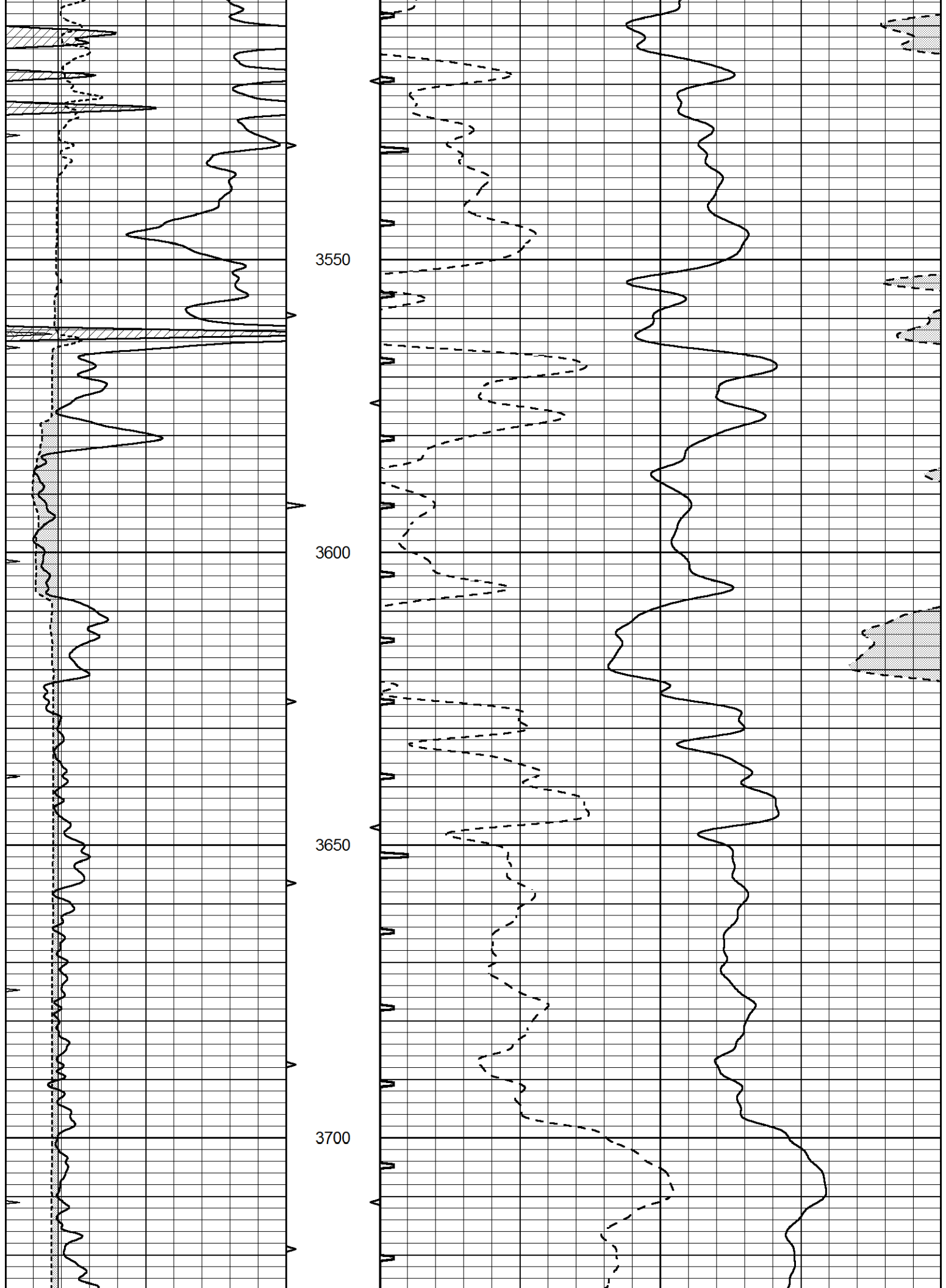


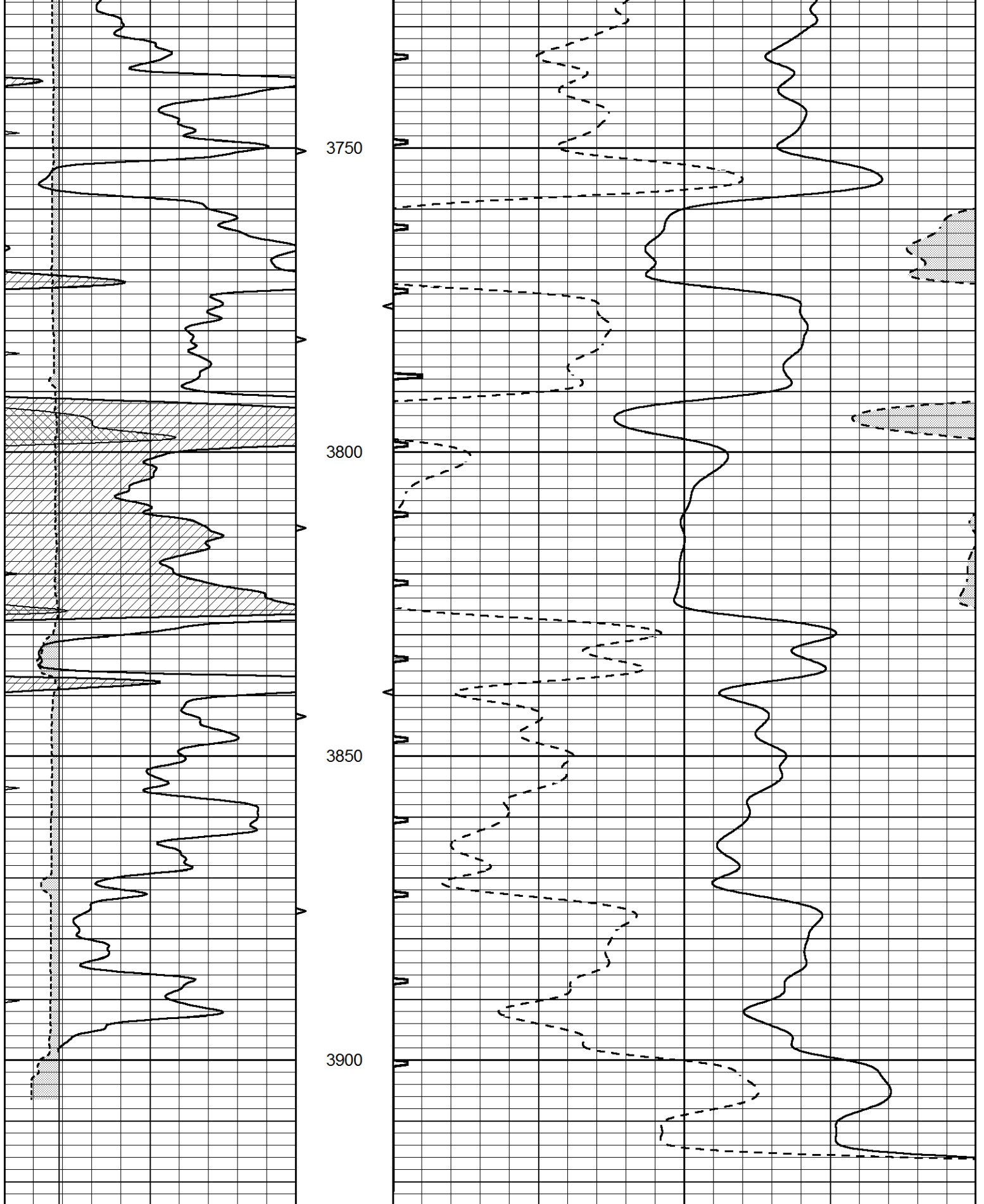


# REPEAT SECTION

Database File 6350pe.db  
 Dataset Pathname pass5.3  
 Presentation Format slt  
 Dataset Creation Tue Aug 09 01:53:40 2022  
 Charted by Depth in Feet scaled 1:240







0	GAMMA RAY (GAPI)	150	ABHV	140	DELTA TIME (usec/ft)	40
6	CALIPER (in)	16	10 (ft3)	0 30	SONIC POROSITY (pu)	-10
0	MINMK	20	TBHV	0	ITT (msec)	20
			0 (ft3)	10		