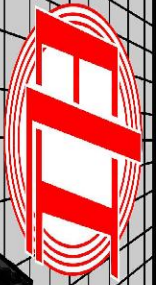


MICRO LOG



Company McCOY PETROLEUM CORPORATION
 Well GRESSEL "A" #1-1
 Field BADGER CREEK
 County SUMNER
 State KANSAS

Company McCOY PETROLEUM CORPORATION
 Well GRESSEL "A" #1-1
 Field BADGER CREEK
 County SUMNER State KANSAS

Location: 330' FSL & 615' FEL
 W/2 - SE - SE - SE
 API #: 15-191-22850-0000
 Permanent Datum GROUND LEVEL Elevation 1238
 Log Measured From KELLY BUSHING 12' A.G.L.
 Drilling Measured From KELLY BUSHING
 SEC 1 TWP 34S RGE 1E
 Other Services CDL/CNL/PE DIL/SONIC
 Elevation K.B. 1250 D.F. 1248 G.L. 1238

Date	8/8/22		
Run Number	TWO		
Depth Driller	3920		
Depth Logger	3920		
Bottom Logged Interval	3918		
Top Log Interval	2200		
Casing Driller	8 5/8"@251'		
Casing Logger	251		
Bit Size	7 7/8"		
Type Fluid in Hole	CHEMICAL MUD	CHLORIDES 1,900 PPM	
Density / Viscosity	9.4/53		
pH / Fluid Loss	9.0/10.8		
Source of Sample	FLOWLINE		
Rm @ Meas. Temp	.900@80F		
Rmf @ Meas. Temp	.675@80F		
Rmc @ Meas. Temp	1.08@90F		
Source of Rmf / Rmc	MEASUREMENT		
Rm @ BHT	.626@115F		
Time Circulation Stopped	10 HOURS		
Time Logger on Bottom	11:30 P.M.		
Maximum Recorded Temperature	115F		
Equipment Number	922339		
Location	HAYS, KANSAS		
Recorded By	JEFF LUEBBERS		
Witnessed By	DAVE WILLIAMS		

<<< Fold Here >>>

All interpretations are opinions based on inferences from electrical or other measurements and we cannot and do not guarantee the accuracy or correctness of any interpretation, and we shall not, except in the case of gross or willful negligence on our part, be liable or responsible for any loss, costs, damages, or expenses incurred or sustained by anyone resulting from any interpretation made by any of our officers, agents or employees. These interpretations are also subject to our general terms and conditions set out in our current Price Schedule.

15-191-22850-0000 Comments

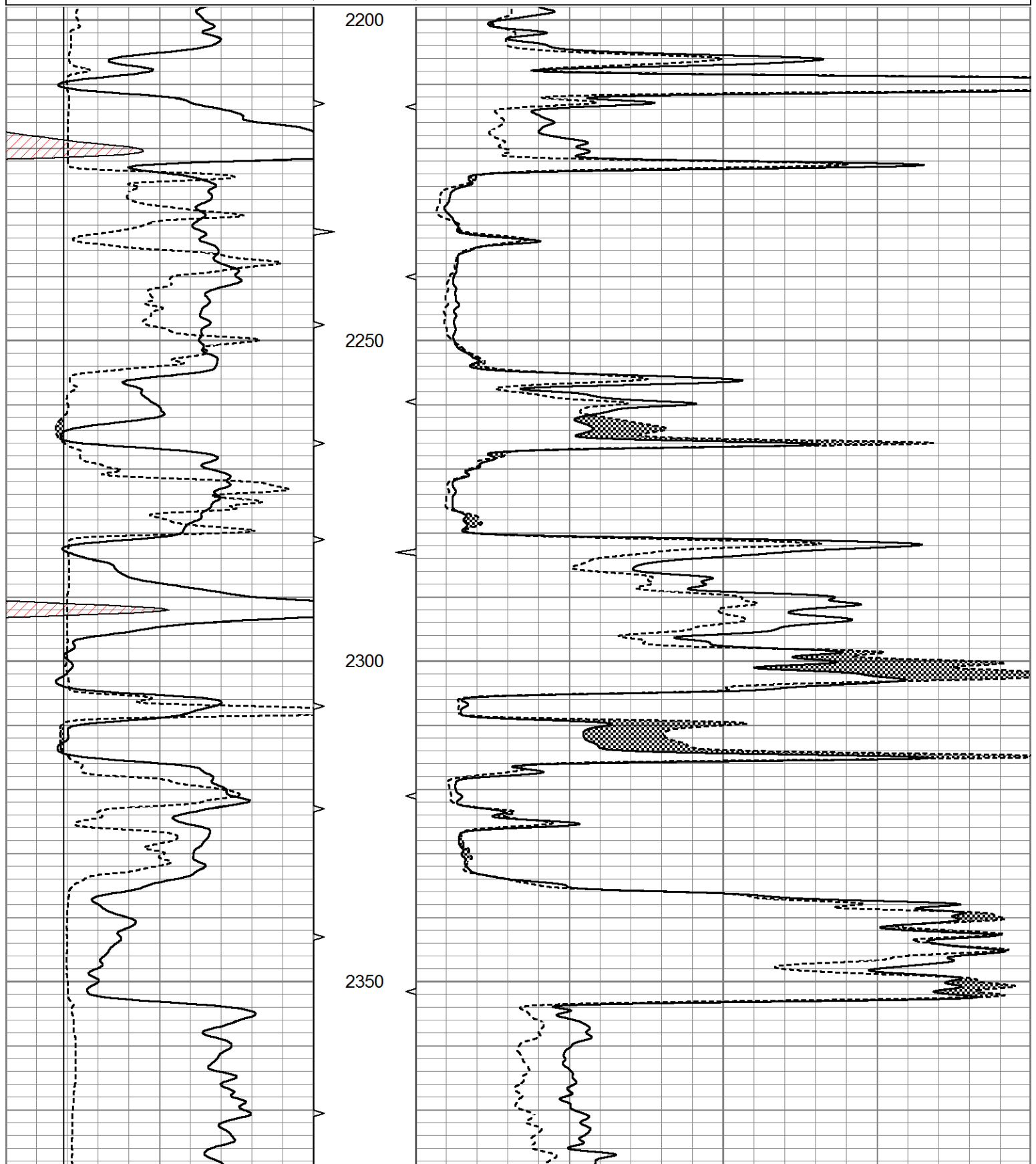
THANK YOU FOR USING ELI WIRELINE HAYS, KANSAS (785) 628-6395
 DIRECTIONS
 WICHITA, KS., S. ON I-35 TO EXIT 4, (HWY 166/SOUTH HAVEN), 3 1/2E. TO "S. OLIVER", 4N. TO "120TH ST.", 1E., N. INTO

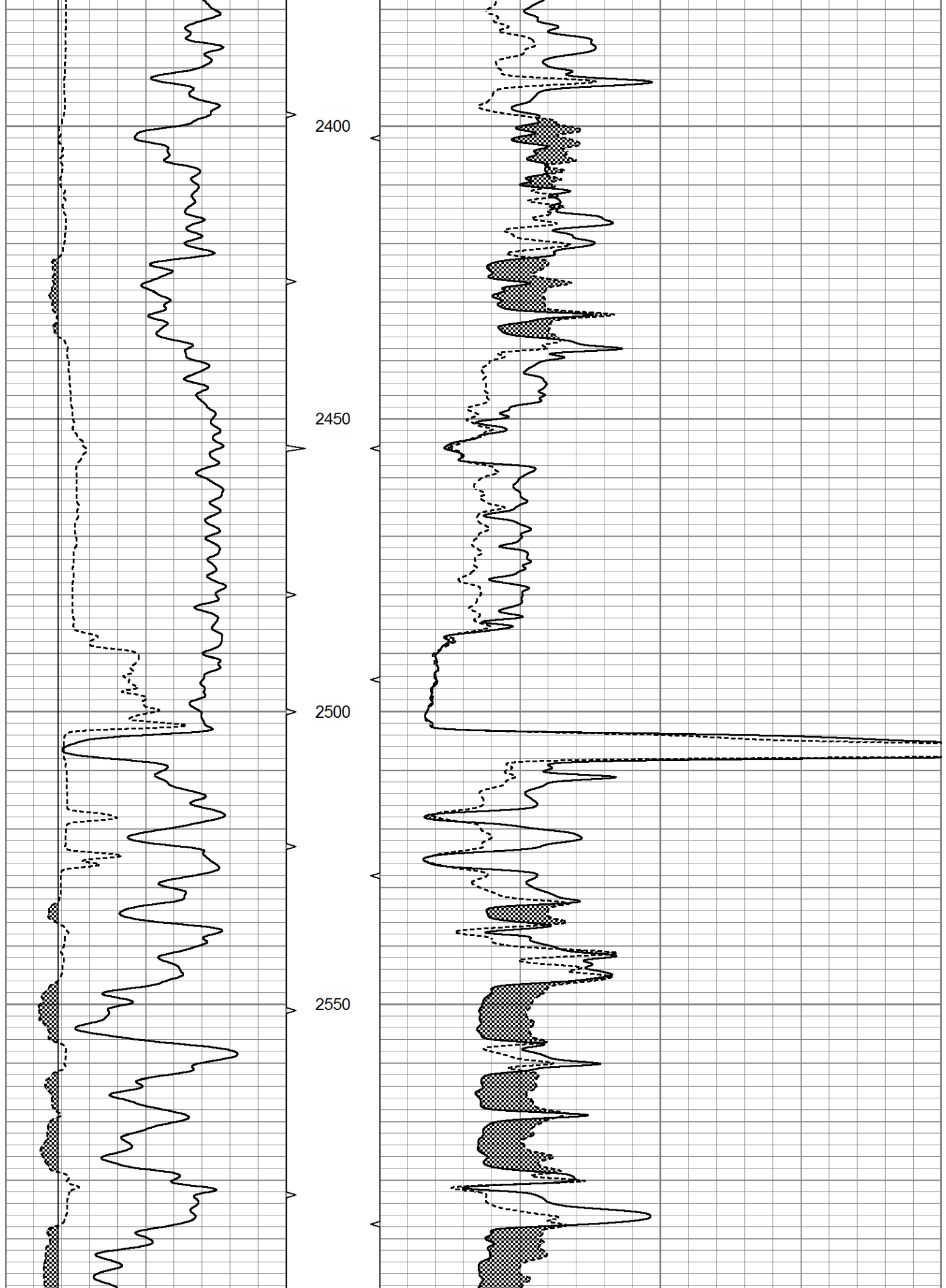


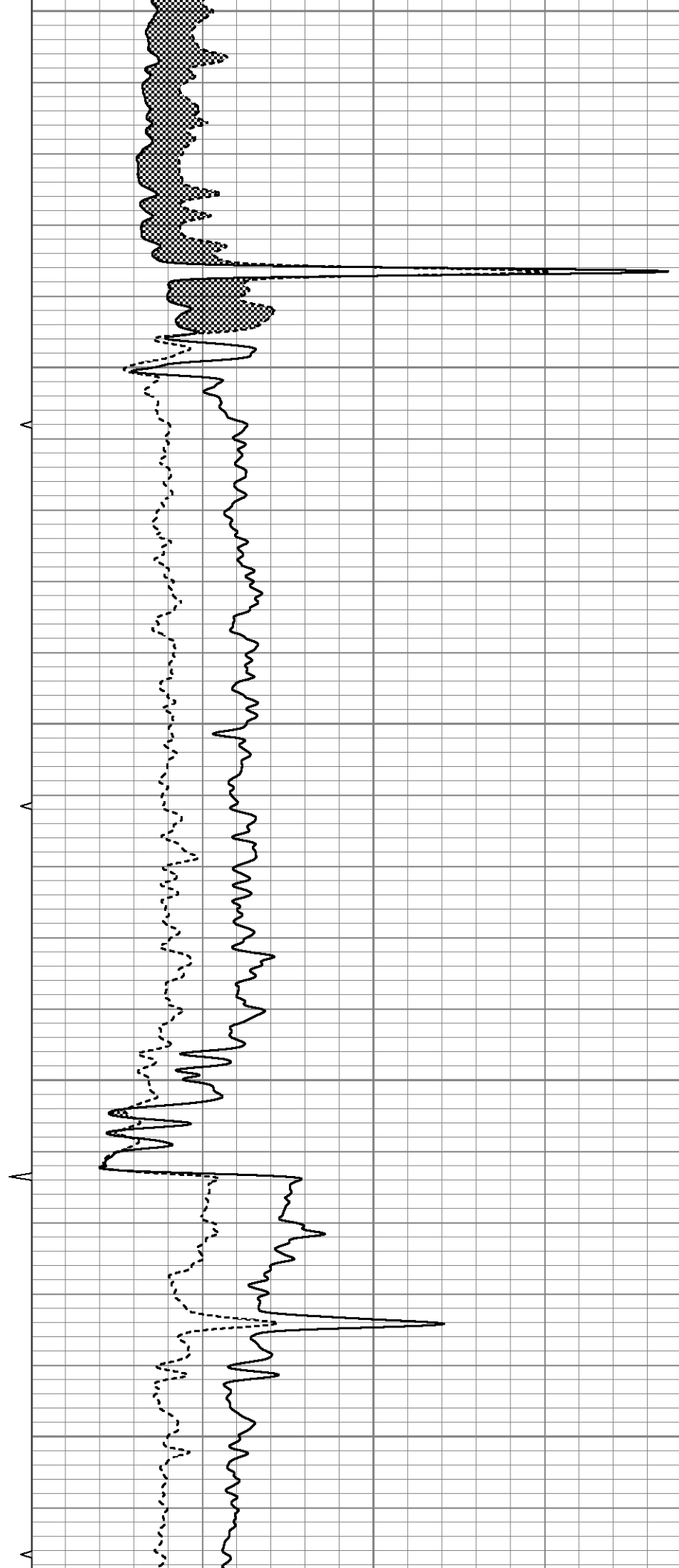
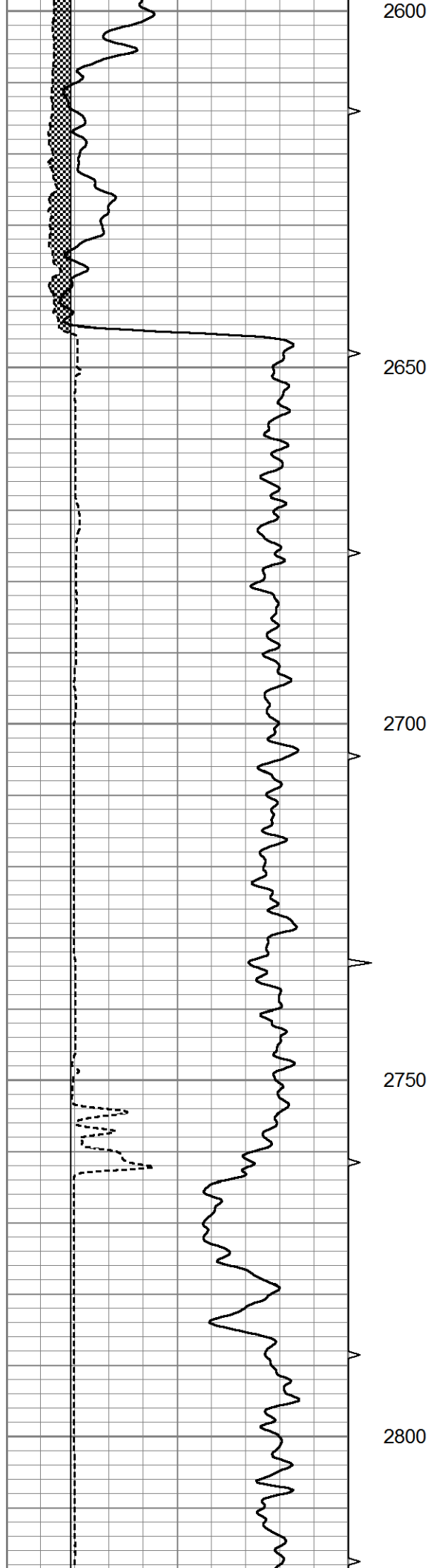
MAIN SECTION

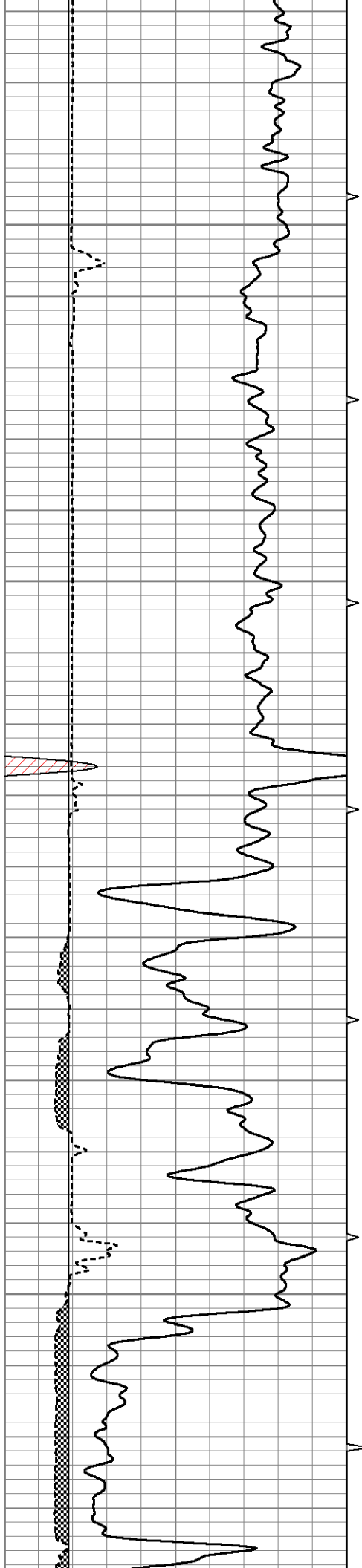
Database File 6350pe.db
 Dataset Pathname pass6.5
 Presentation Format micro
 Dataset Creation Tue Aug 09 01:23:20 2022
 Charted by Depth in Feet scaled 1:240

0	GR (GAPI)	150	ABHV	0	MEL20 (Ohm-m)	40
6	MELCAL (in)	16	10 (ft3)	0	MEL15 (Ohm-m)	40
			ABHV			
			0 (ft3)	10		







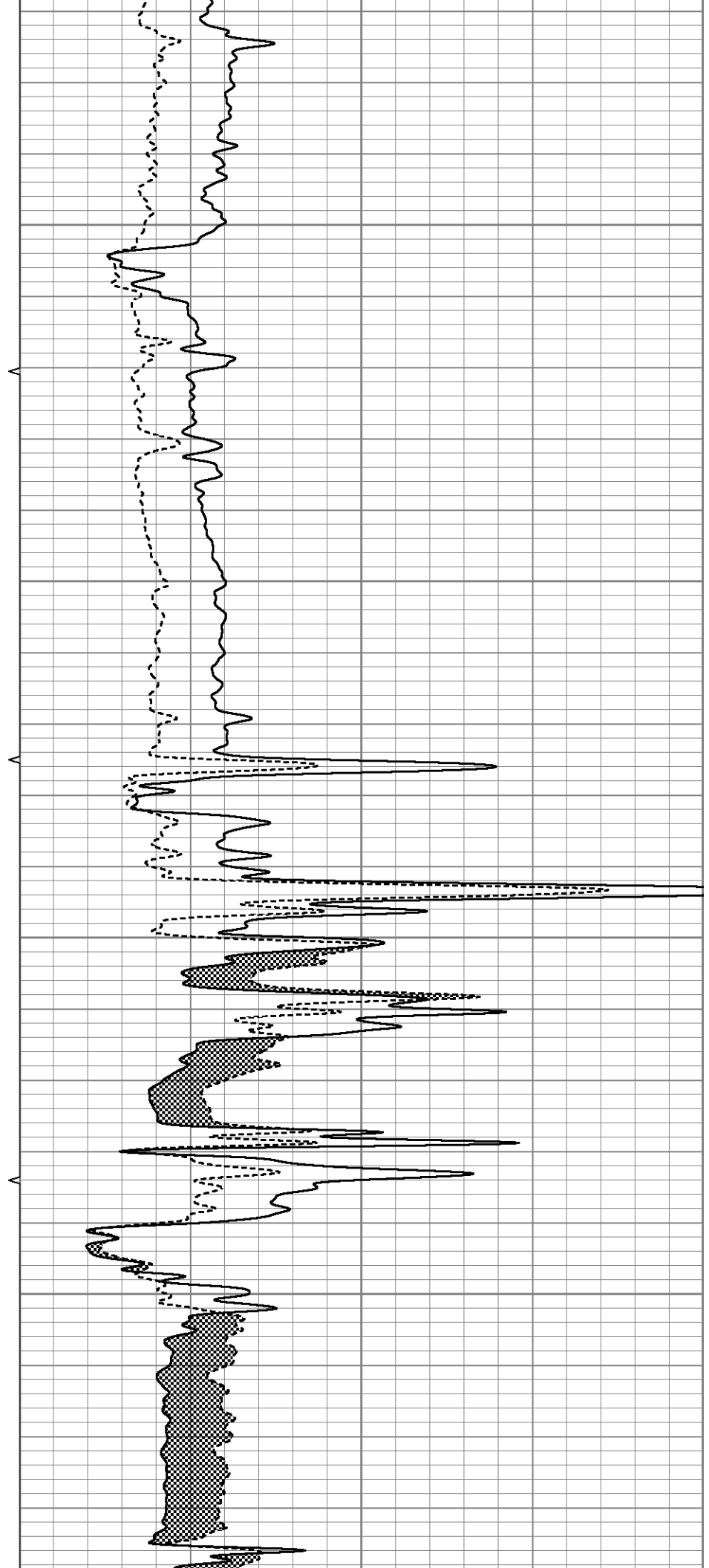


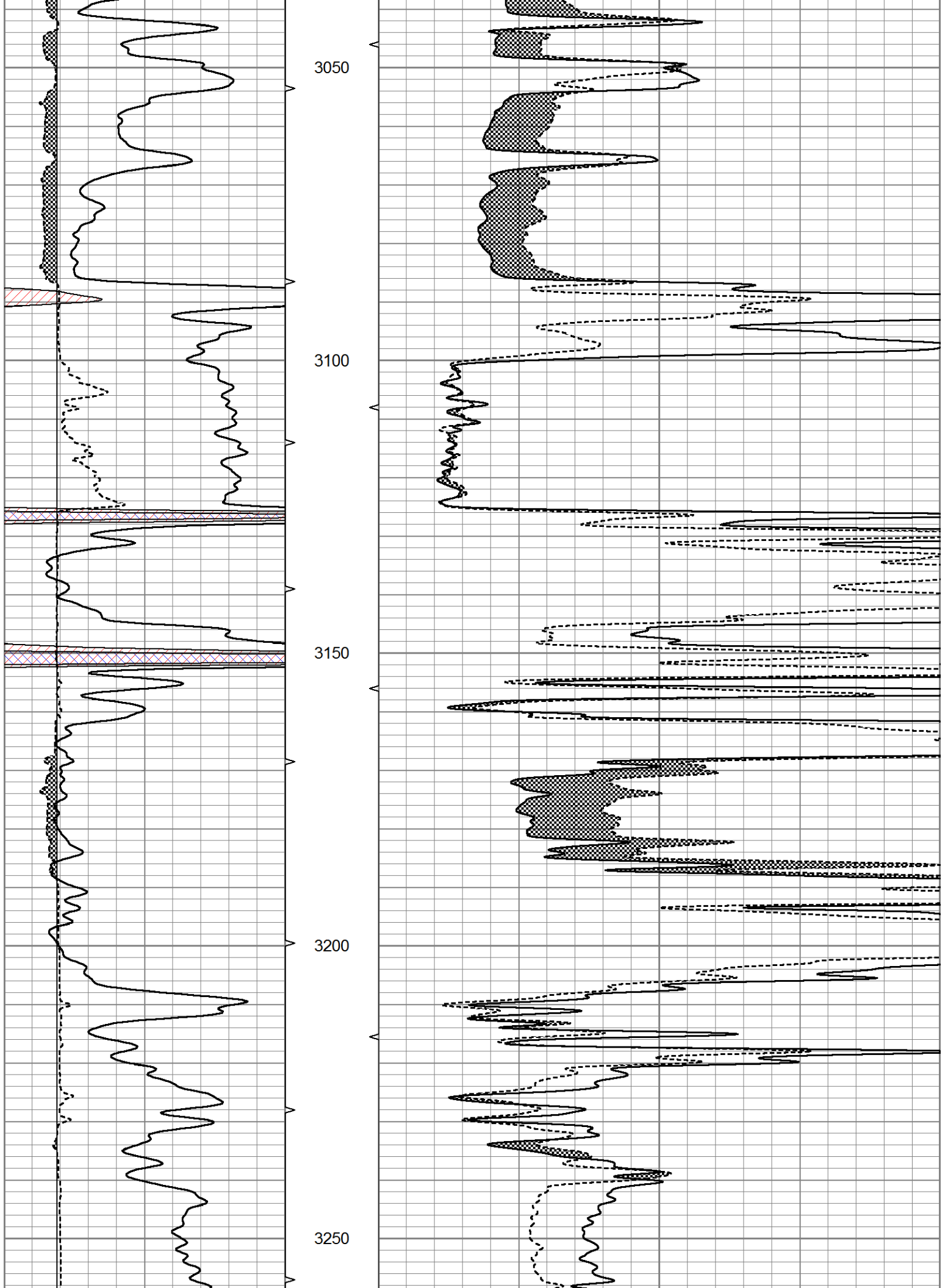
2850

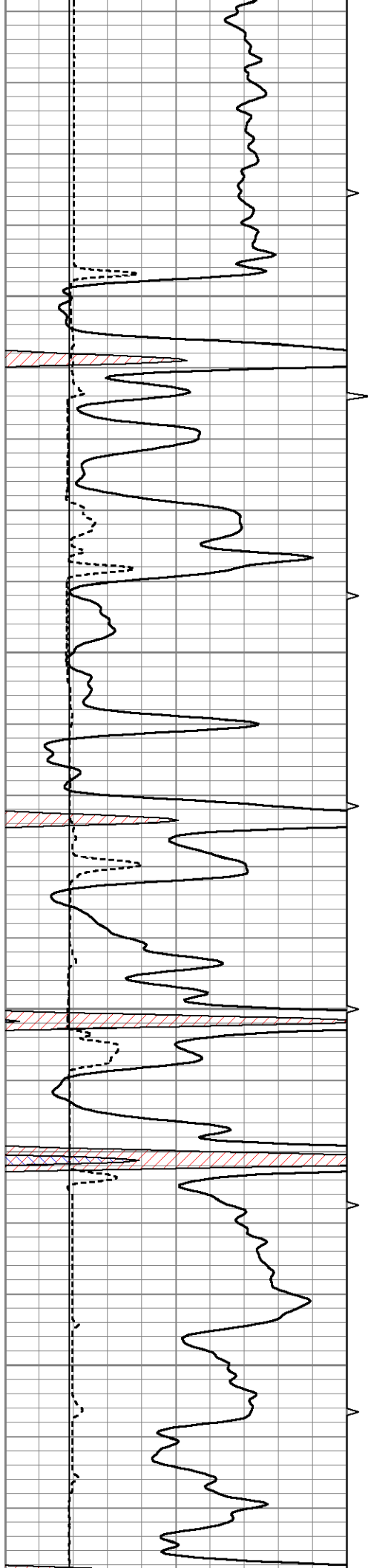
2900

2950

3000





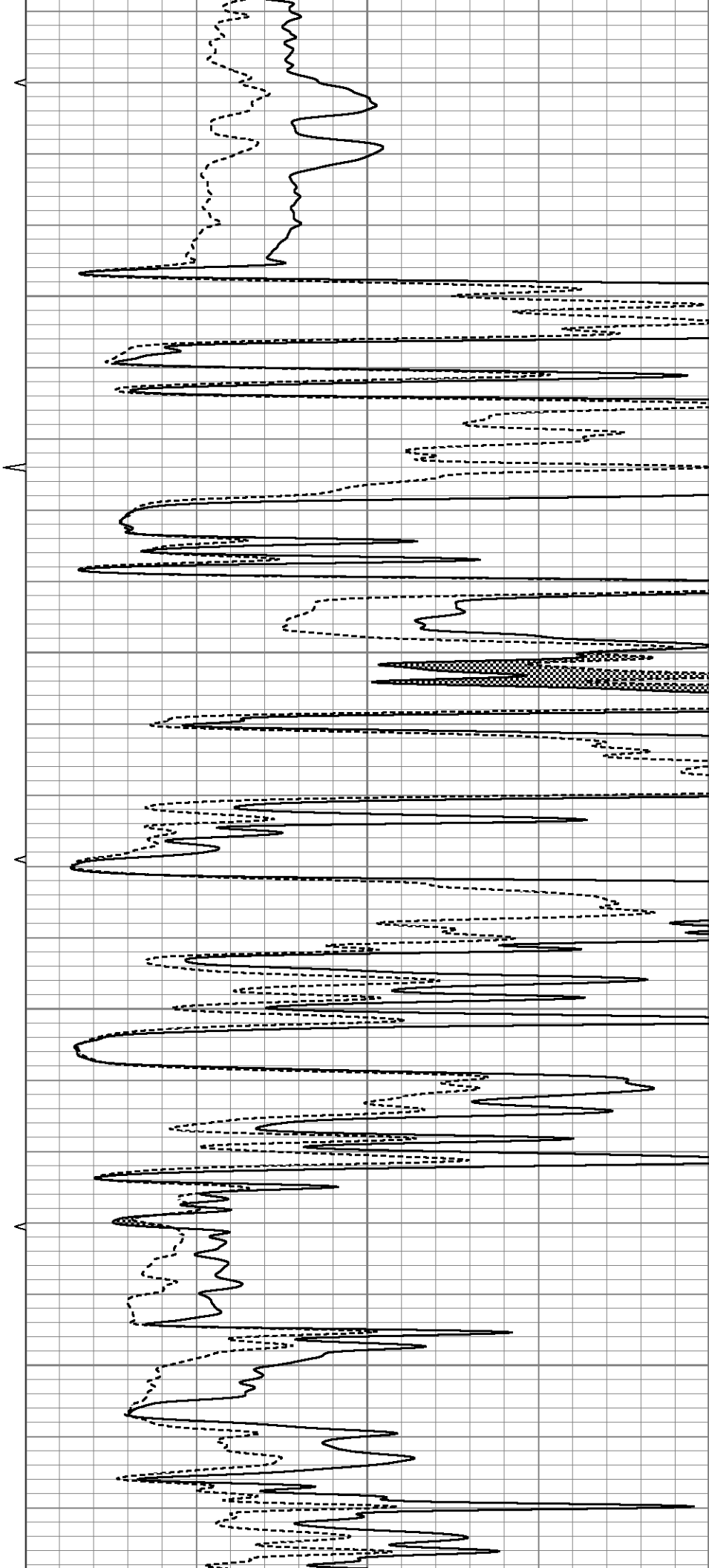


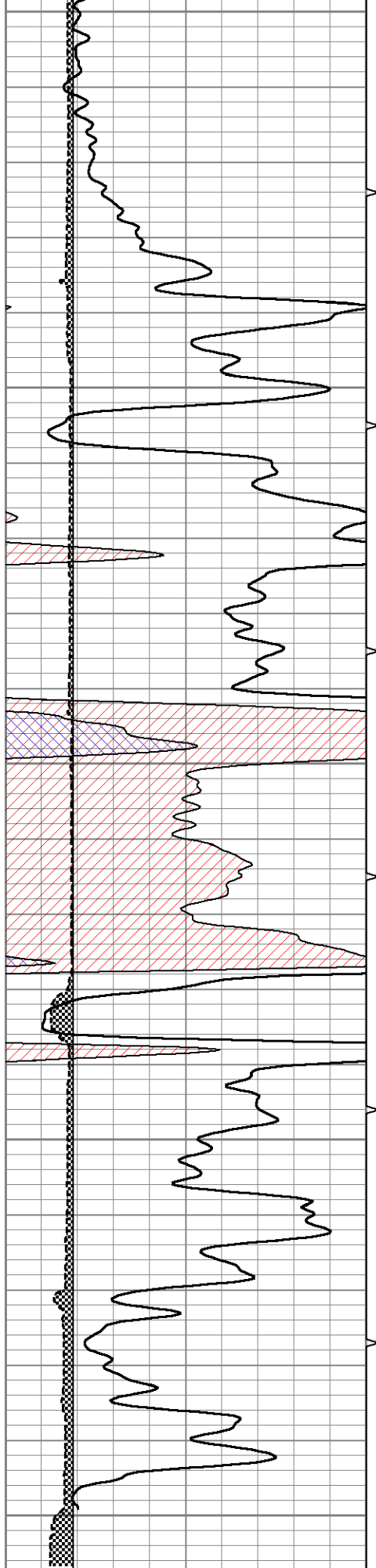
3300

3350

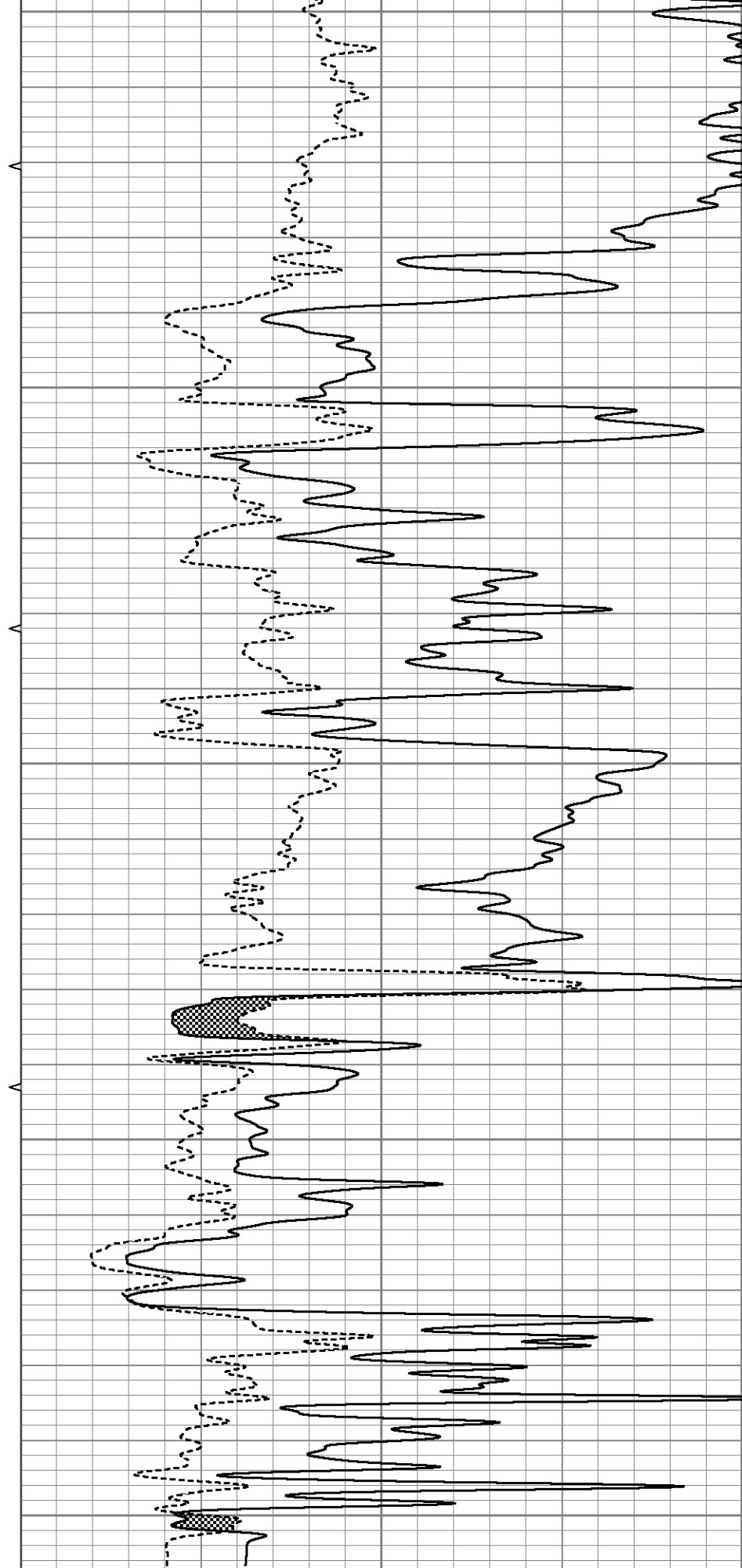
3400

3450





3700
3750
3800
3850
3900



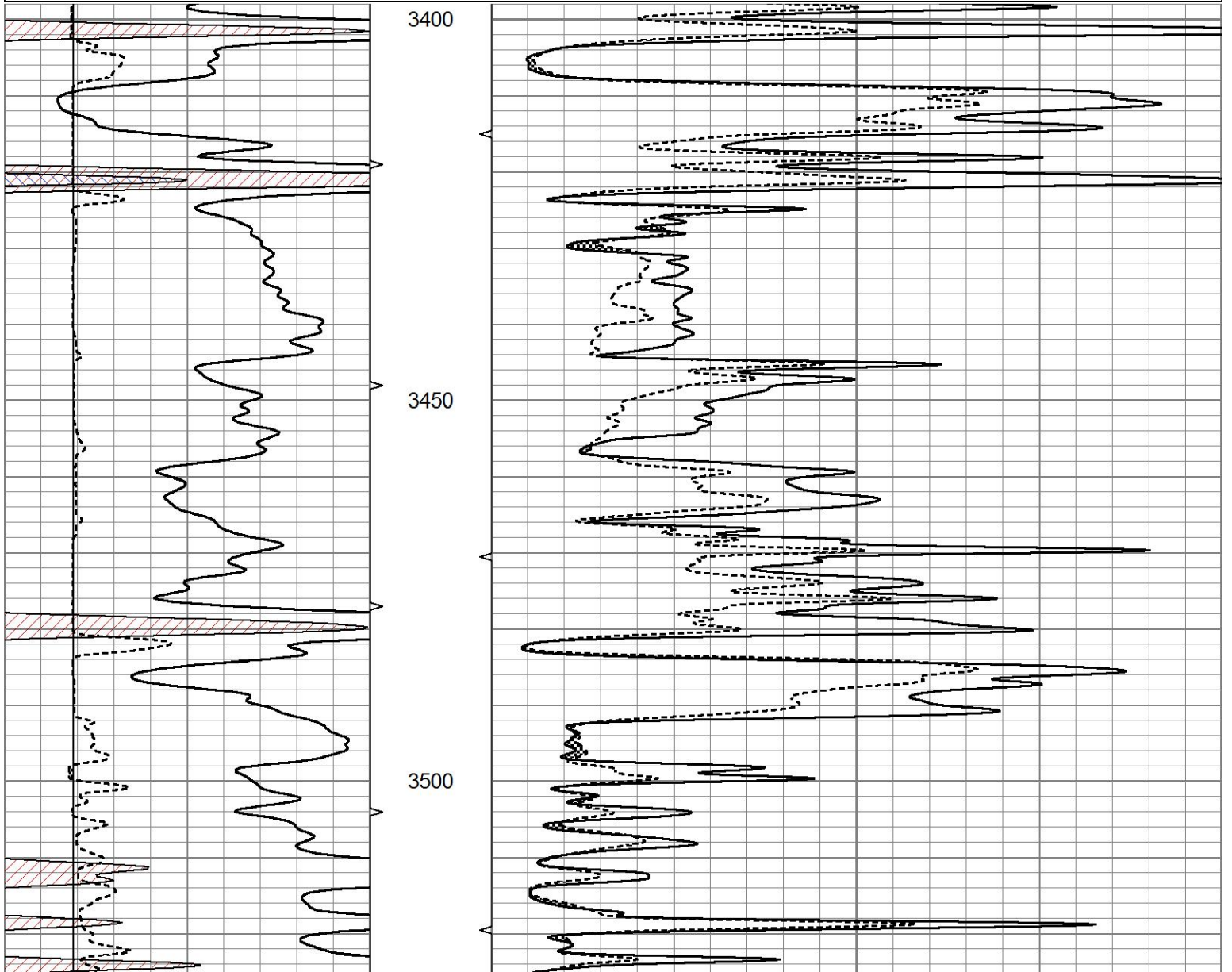
0	GR (GAPI)	150	ABHV	0	MEL20 (Ohm-m)	40
6	MELCAL (in)	16	10 (ft3) 0	0	MEL15 (Ohm-m)	40
			ABHV			
			0 (ft3) 10			

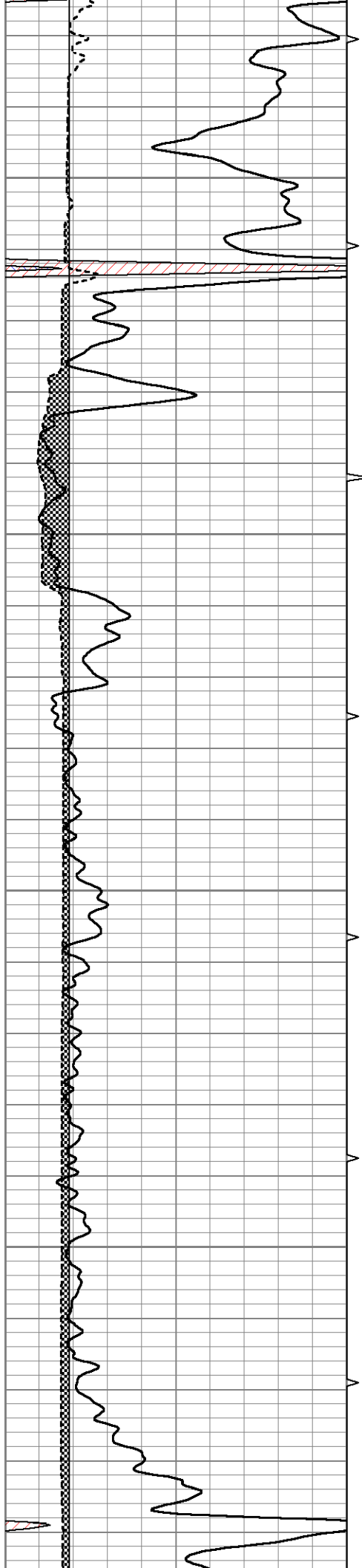


REPEAT SECTION

Database File 6350pe.db
 Dataset Pathname pass5.2
 Presentation Format micro
 Dataset Creation Tue Aug 09 00:25:24 2022
 Charted by Depth in Feet scaled 1:240

0	GR (GAPI)	150	ABHV	0	MEL20 (Ohm-m)	40
6	MELCAL (in)	16	10 (ft3) 0	0	MEL15 (Ohm-m)	40
			ABHV			
			0 (ft3) 10			



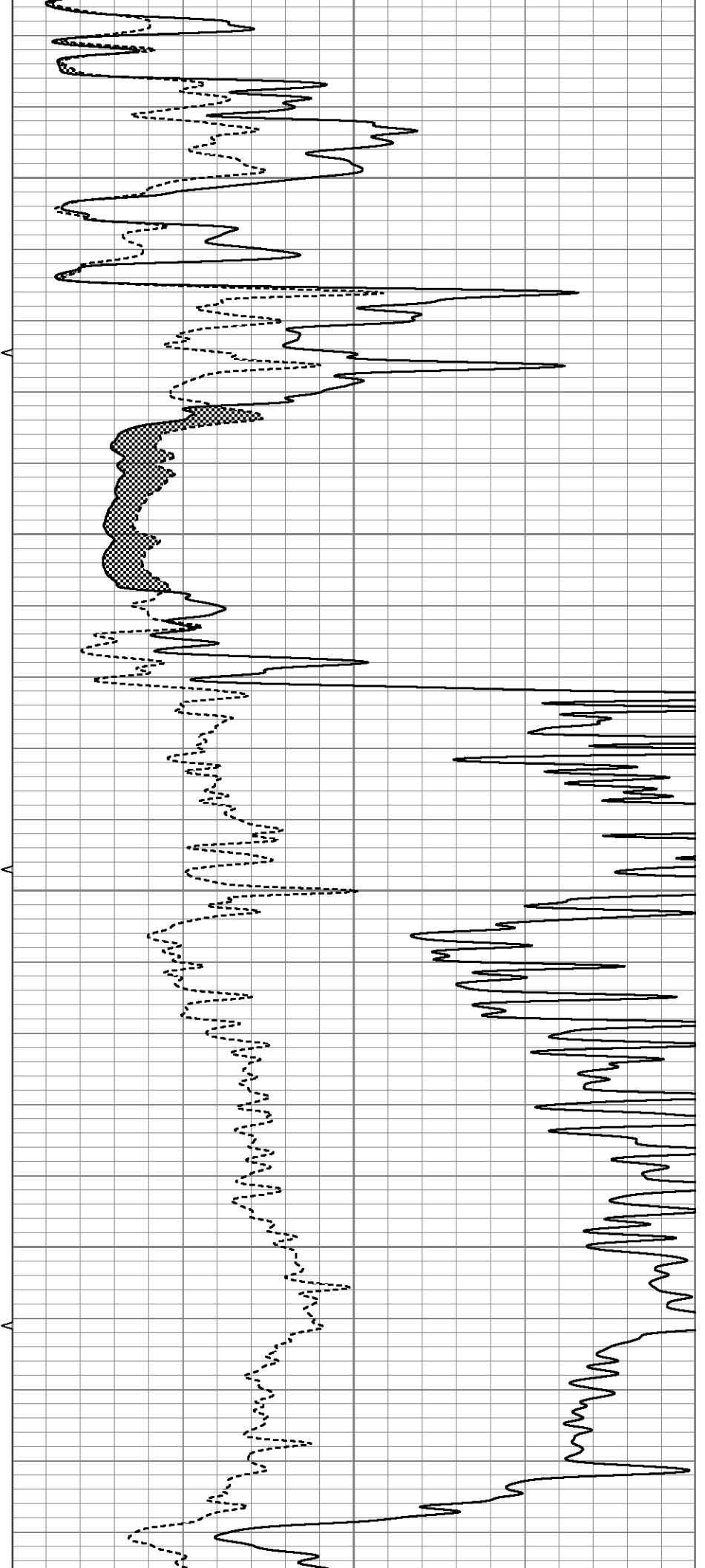


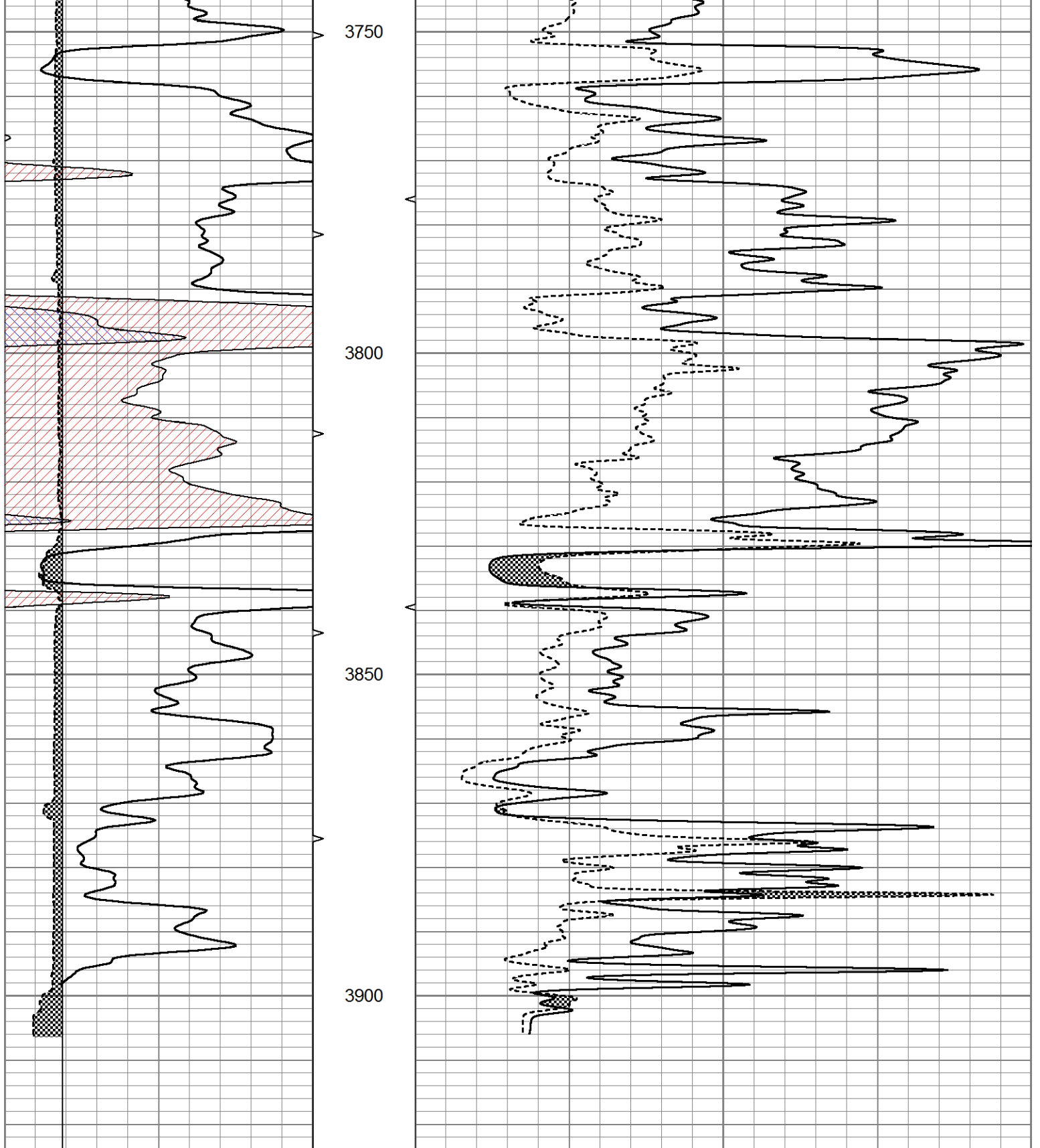
3550

3600

3650

3700





0	GR (GAPI)	150	ABHV	0	MEL20 (Ohm-m)	40
6	MELCAL (in)	16	10 (ft3)	0 0	MEL15 (Ohm-m)	40
			ABHV			
			0 (ft3)	10		

Calibration Report

Database File 6350pe.db
 Dataset Pathname pass6.5
 Dataset Creation Tue Aug 09 01:23:20 2022

MICRO Calibration Report

Serial Number: 070910
 Tool Model: ProbeN
 Performed: Mon Aug 08 14:16:59 2022

Caliper Calibration: Gain=4.571 Offset=0.914

	Low Cal	High Cal
References	8.000	16.000
Readings	1.550	3.300

1.5" Calibration: Gain=36.000 Offset=1.000

	Low Cal	High Cal
References	0.000	20.000
Readings	0.000	1.216

2" Calibration: Gain=60.000 Offset=0.000

	Low Cal	High Cal
References	0.000	20.000
Readings	0.002	1.053

Gamma Ray Calibration Report

Serial Number: 070558
 Tool Model: OPEN_GR
 Performed: Mon Aug 08 22:47:24 2022

Calibrator Value: 1.0 GAPI

Background Reading: 0.0 cps
 Calibrator Reading: 1.0 cps

Sensitivity: 0.3000 GAPI/cps