

SONIC LOG



Company McCoy Petroleum Corporation
 Well CARROLL "A" #1-6
 Field UNNAMED
 County SUMNER State KANSAS

Location: API #: 15-191-22847-0000
 1542' FSL & 2198' FEL
 SE - SW - NW - SE
 SEC 6 TWP 33S RGE 1E
 Permanent Datum GROUND LEVEL Elevation 1199
 Log Measured From KELLY BUSHING 12' A.G.L.
 Drilling Measured From KELLY BUSHING
 Other Services CDL/CNL/PE DIL/SONIC
 Elevation K.B. 1211 D.F. 1209 G.L. 1199

Date	5/26/22
Run Number	TWO
Depth Driller	4260
Depth Logger	4260
Bottom Logged Interval	4252
Top Log Interval	200
Casing Driller	8 5/8"@252'
Casing Logger	264
Bit Size	7 7/8"
Type Fluid in Hole	CHEMICAL MUD
Density / Viscosity	9.4/57
pH / Fluid Loss	9.7/9.5
Source of Sample	FLOWLINE
Rm @ Meas. Temp	1.40@80F
Rmf @ Meas. Temp	1.05@80F
Rmc @ Meas. Temp	1.68@80F
Source of Rmf / Rmc	MEASURED
Rm @ BHT	.949@118F
Time Circulation Stopped	4:5 HOURS
Time Logger on Bottom	3:00 P.M.
Maximum Recorded Temperature	118F
Equipment Number	8916
Location	HAYS, KANSAS
Recorded By	JEFF LUEBBERS
Witnessed By	DAVE WILLIAMS

<<< Fold Here >>>

All interpretations are opinions based on inferences from electrical or other measurements and we cannot and do not guarantee the accuracy or correctness of any interpretation, and we shall not, except in the case of gross or willful negligence on our part, be liable or responsible for any loss, costs, damages, or expenses incurred or sustained by anyone resulting from any interpretation made by any of our officers, agents or employees. These interpretations are also subject to our general terms and conditions set out in our current Price Schedule.

Comments

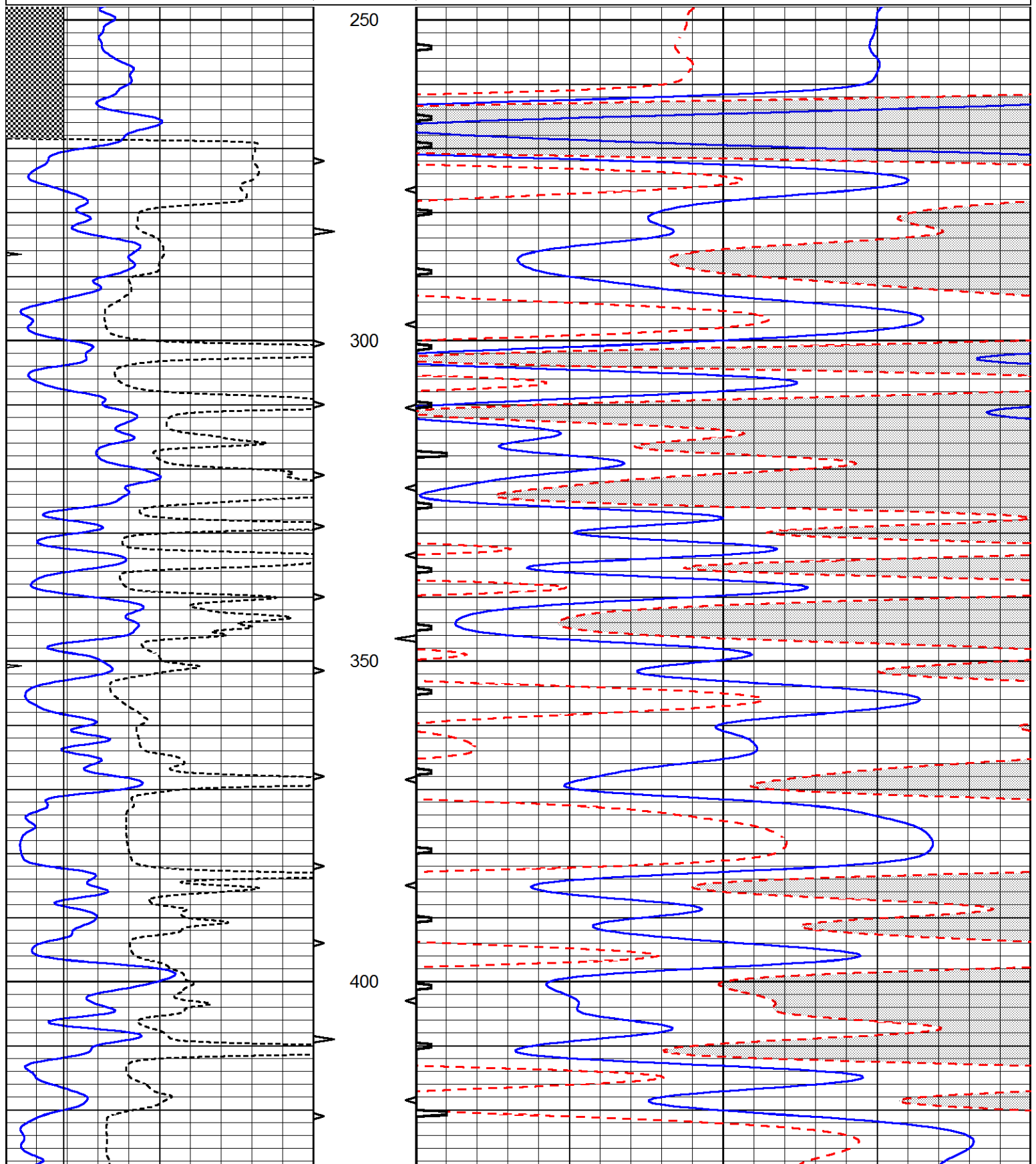
THANK YOU FOR USING ELI WIRELINE, HAYS, KS. (785) 628-6395
 DIRECTIONS:
 WELLINGTON, KS., (JUNCTION OF HWY 81 & 160) S. ON 81 TO "RD.60", 3E., 1/2N., W. INTO

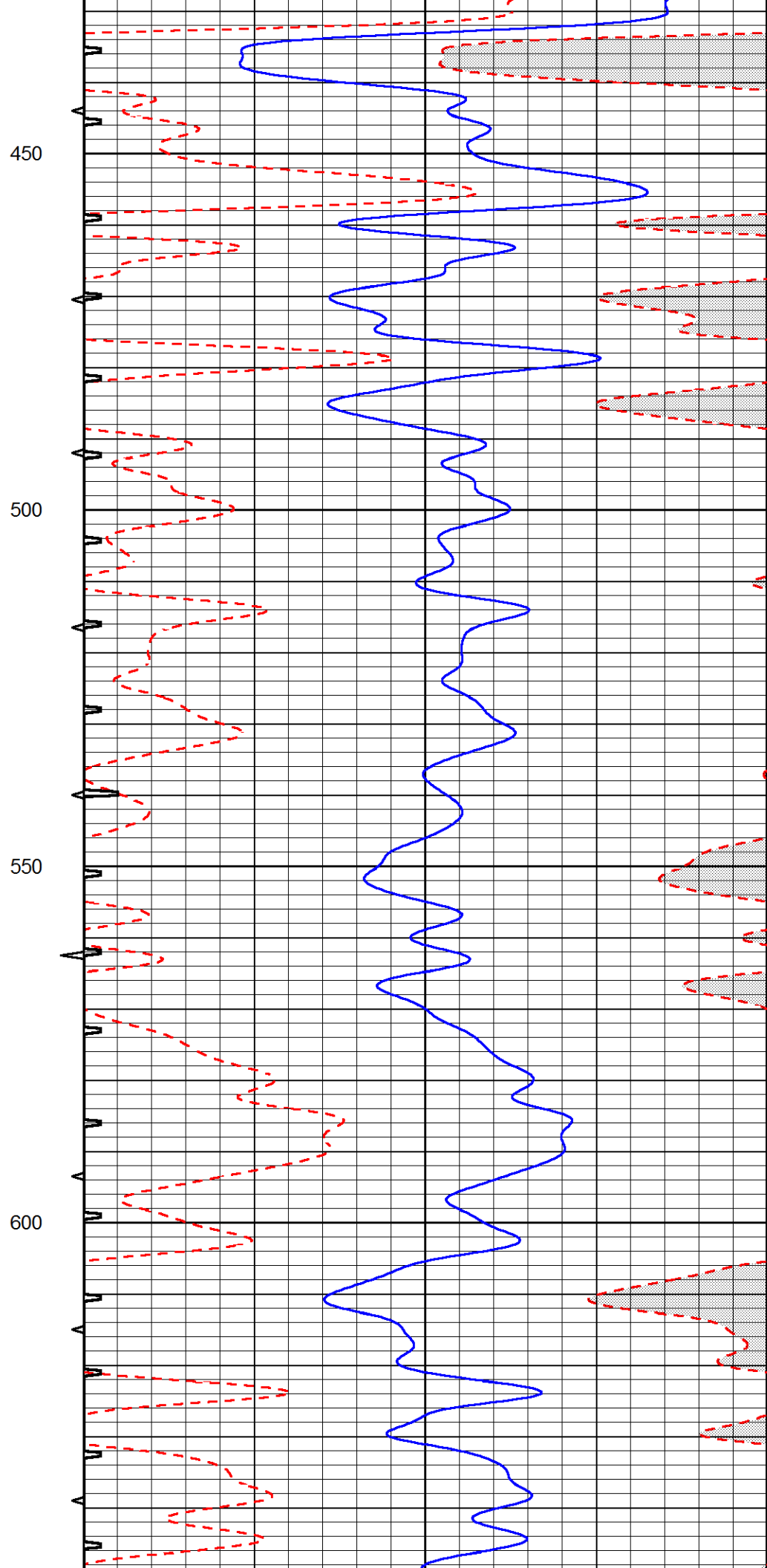
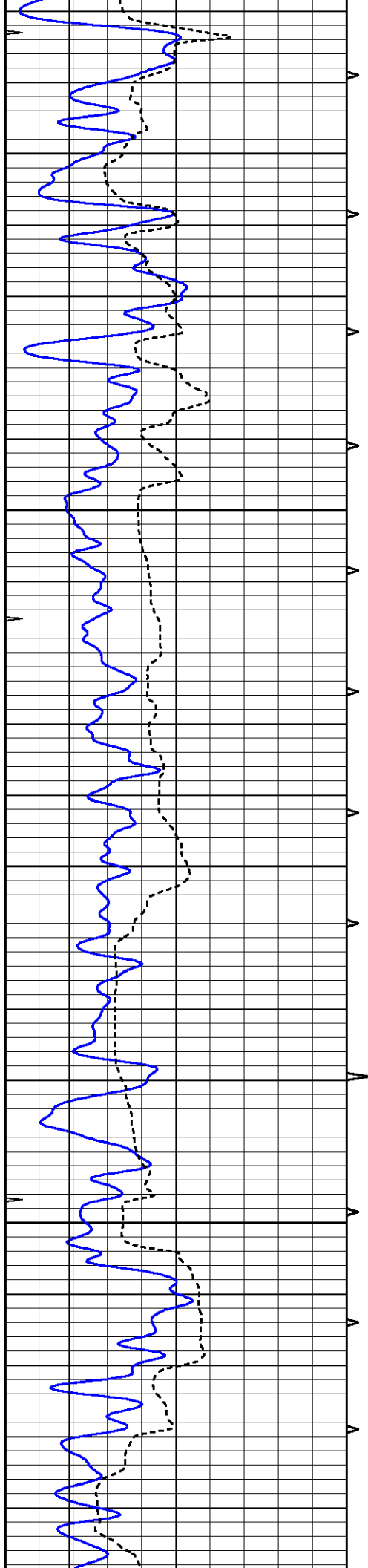


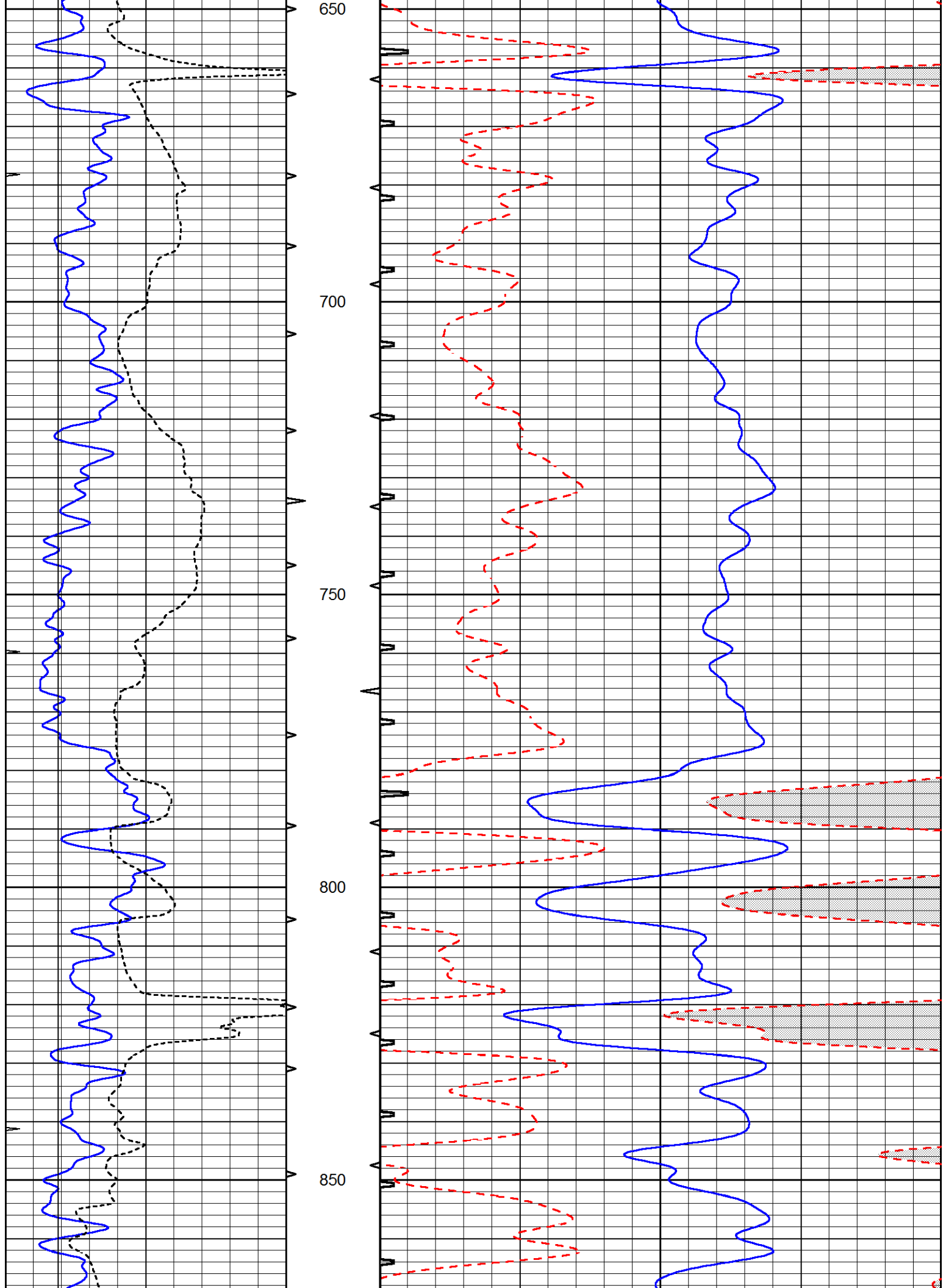
MAIN SECTION

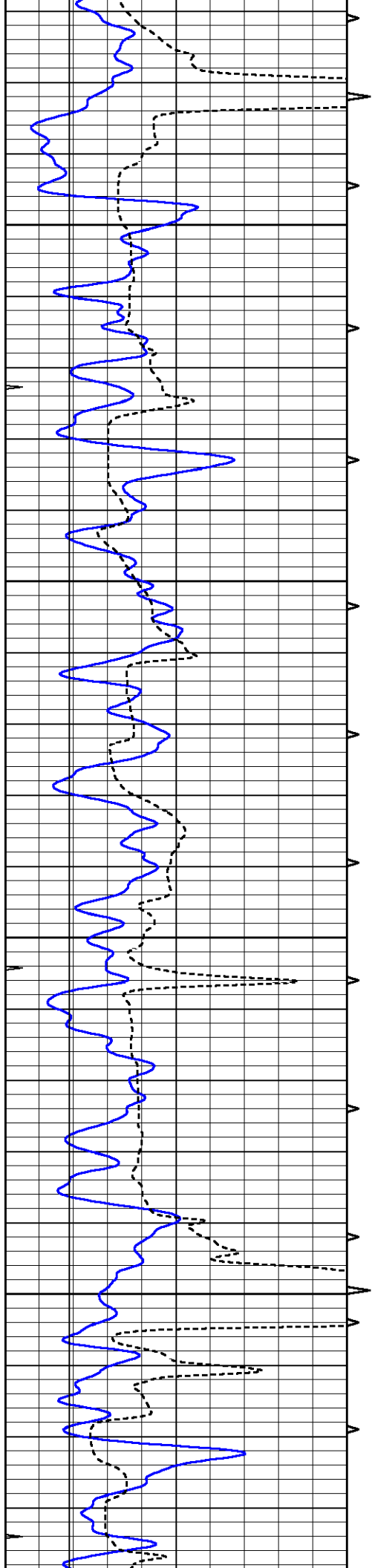
Database File 6557pe.db
 Dataset Pathname pass6.2M
 Presentation Format _slt
 Dataset Creation Thu May 26 17:13:26 2022
 Charted by Depth in Feet scaled 1:240

0	GAMMA RAY (GAPI)	150	ABHV	140	DELTA TIME (usec/ft)	40
0	MINMK	20	10 (ft3) 0	30	SONIC POROSITY (pu)	-10
6	MELCAL (in)	16	TBHV	0	ITT (msec)	20
			0 (ft3) 10			







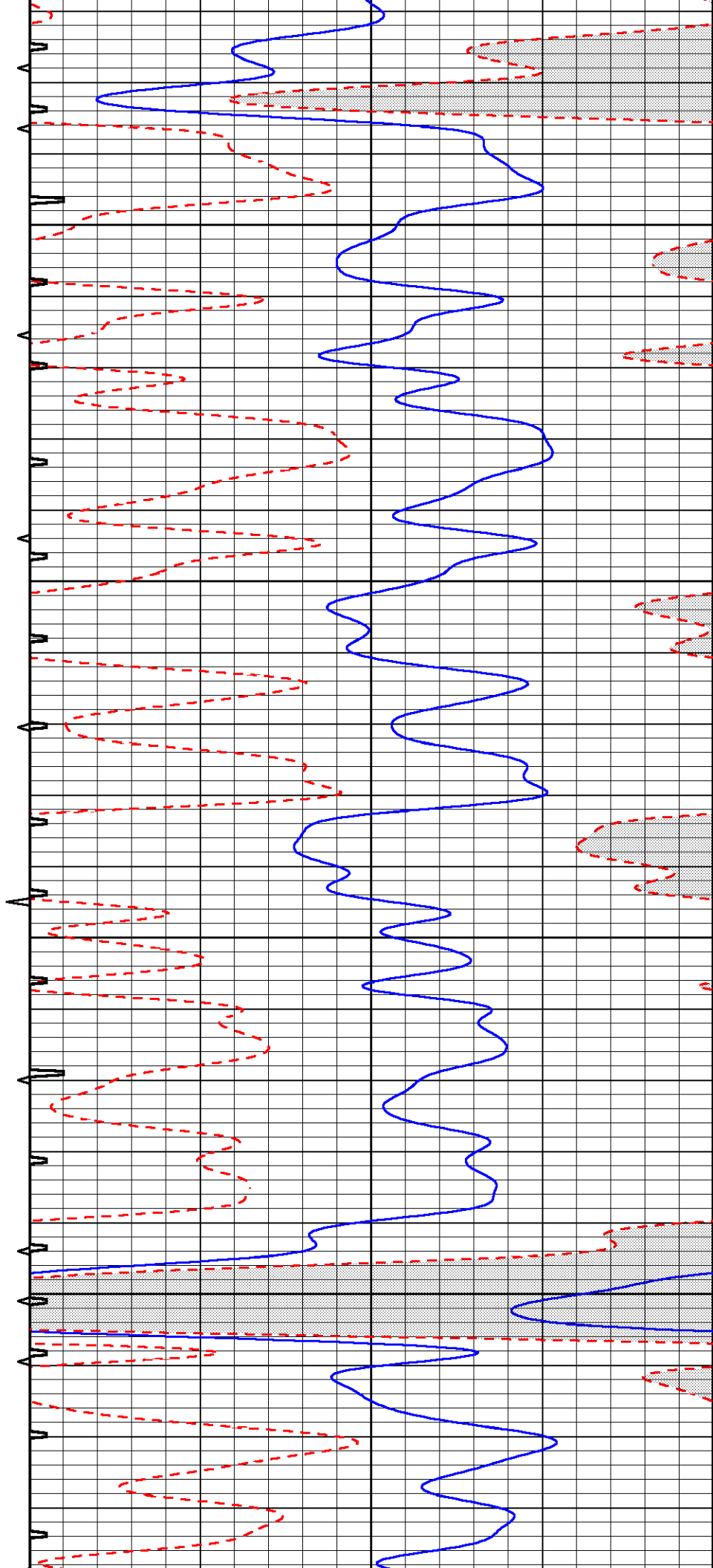


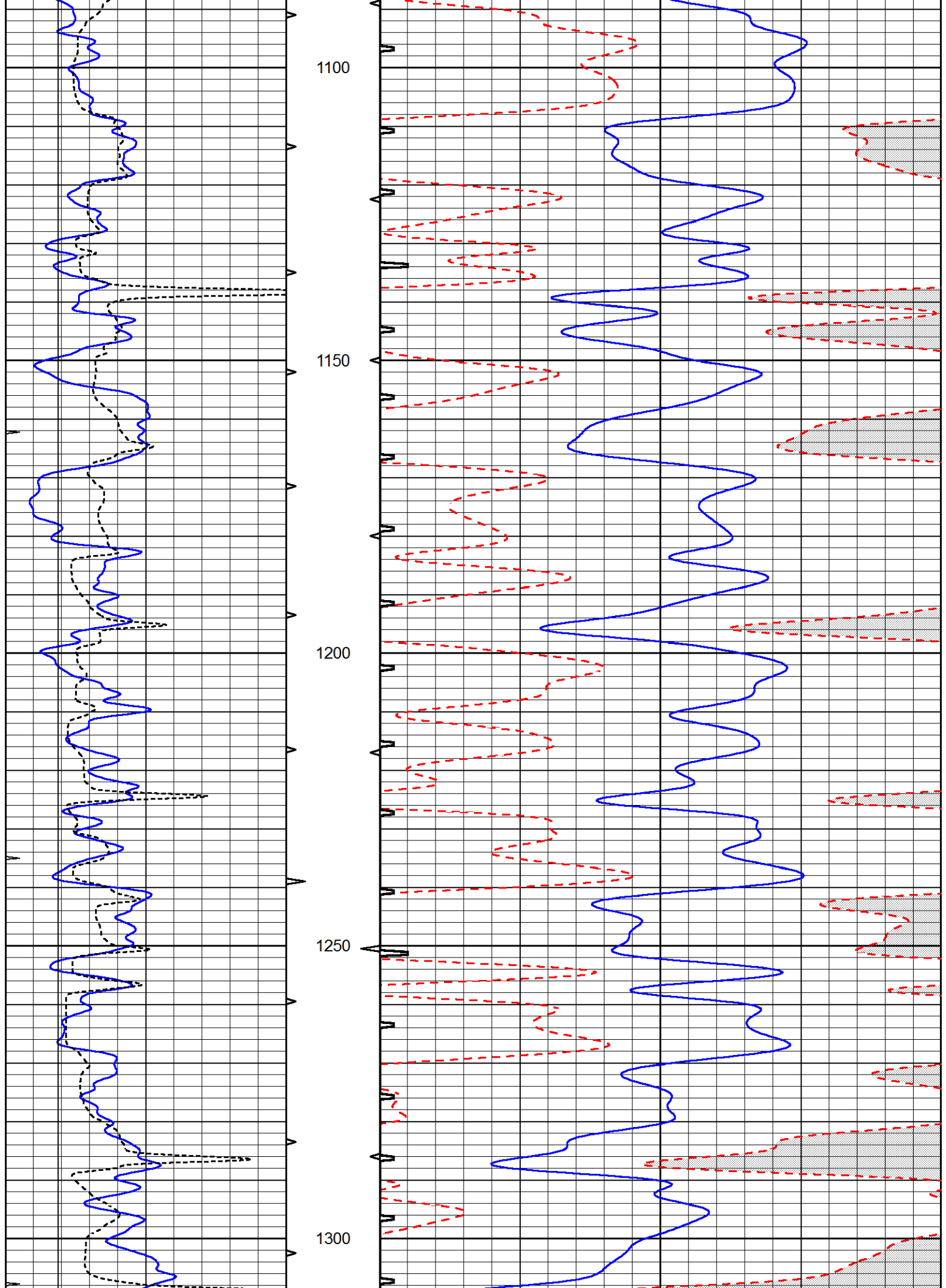
900

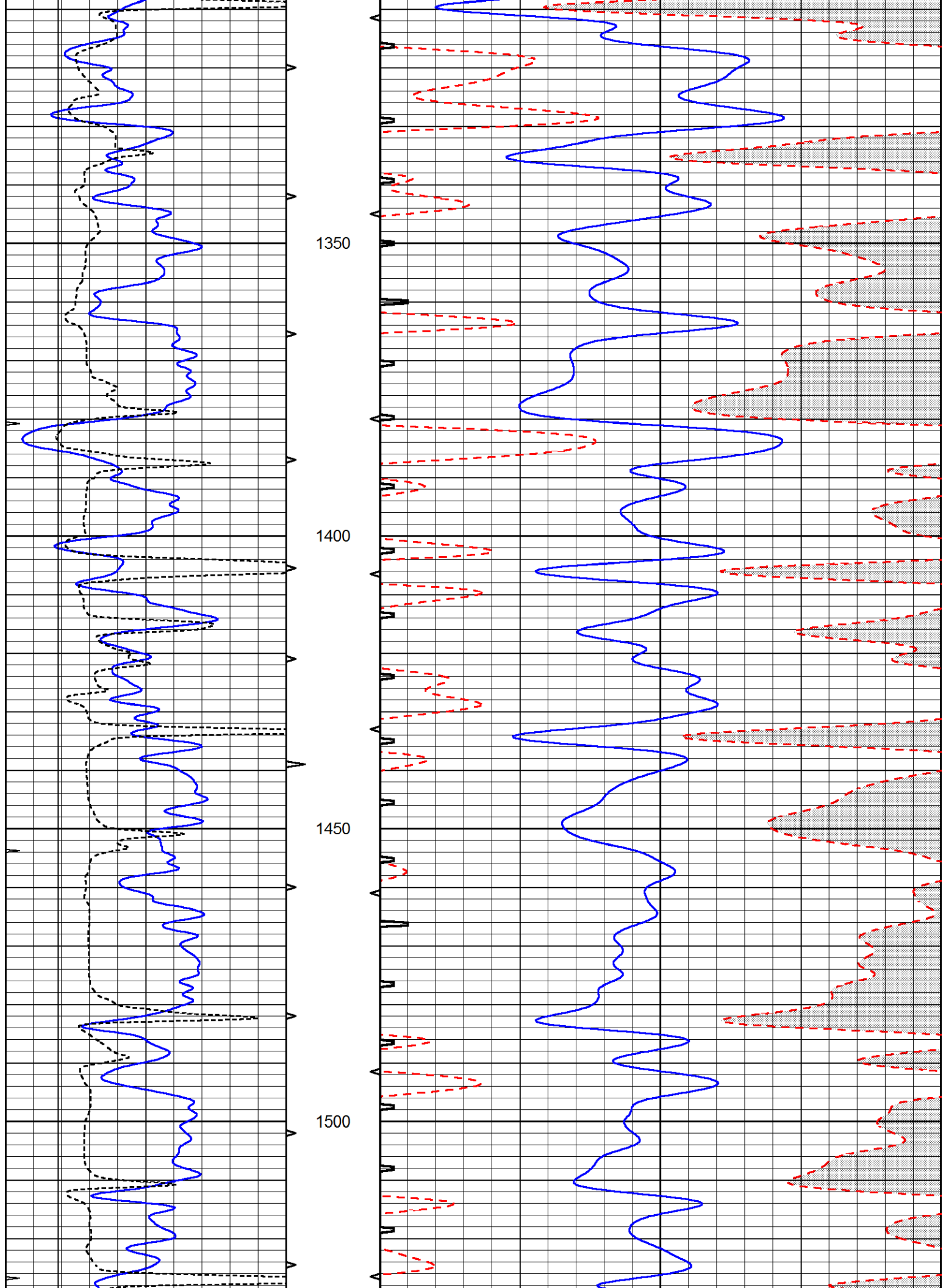
950

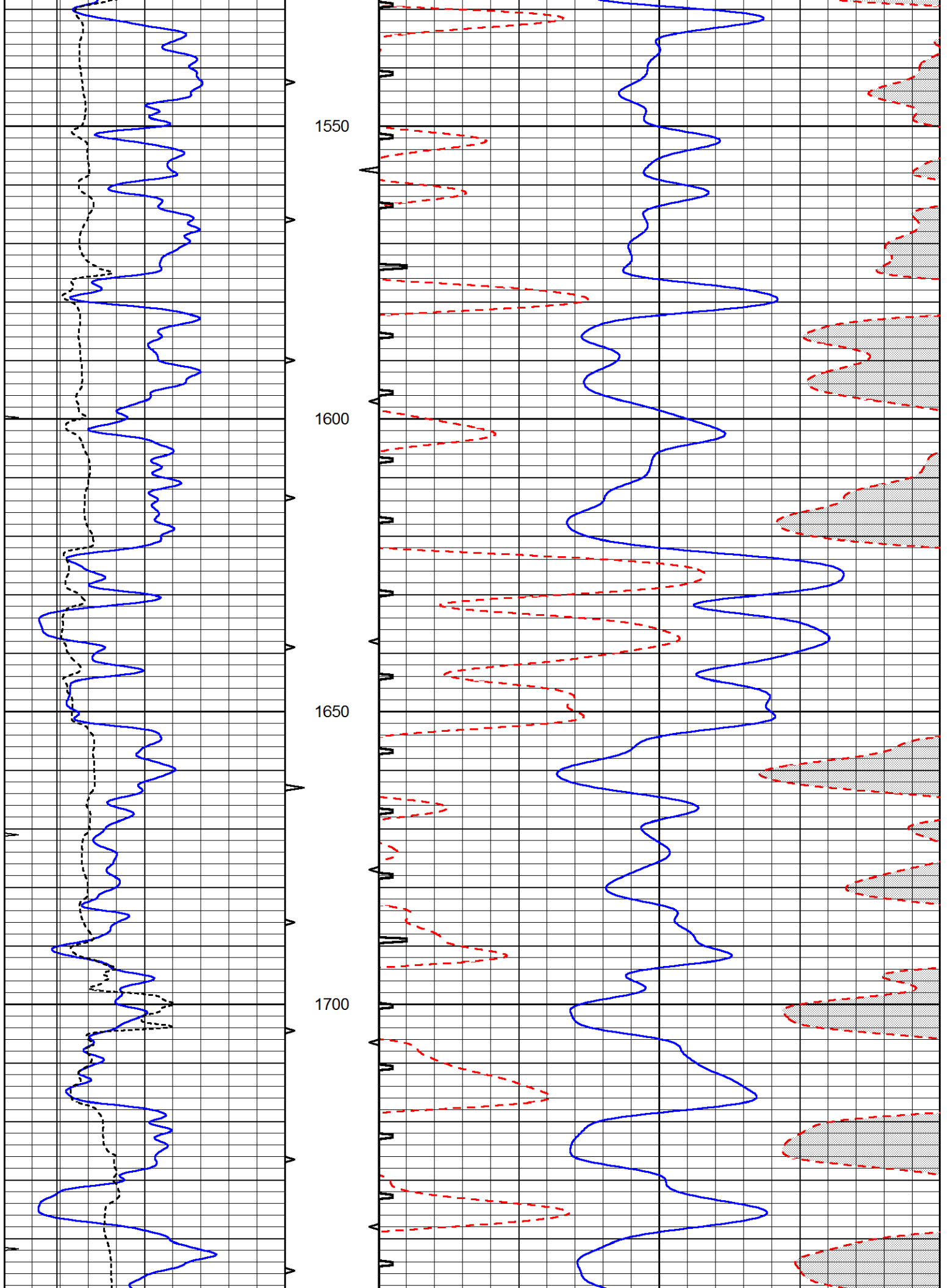
1000

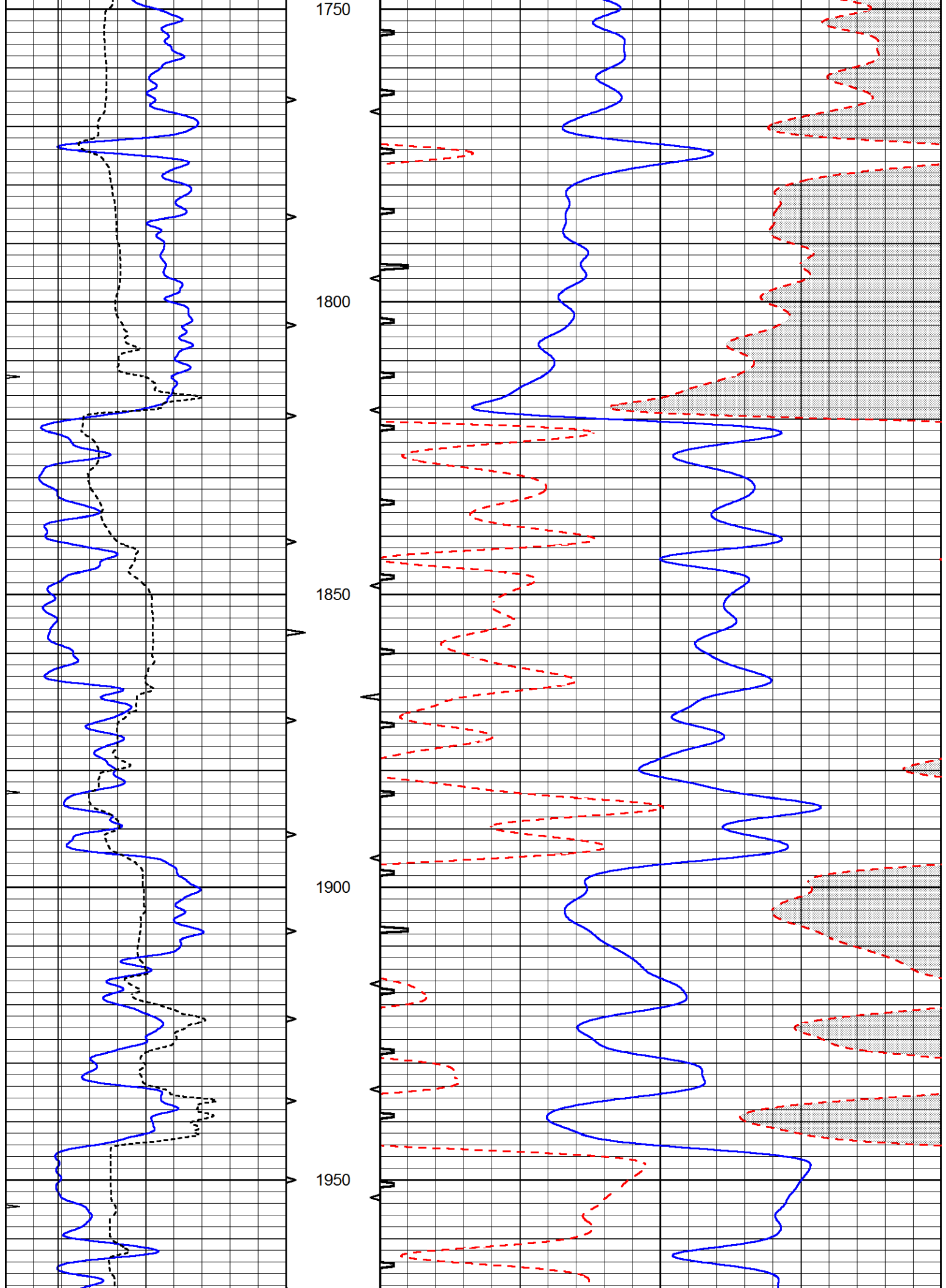
1050

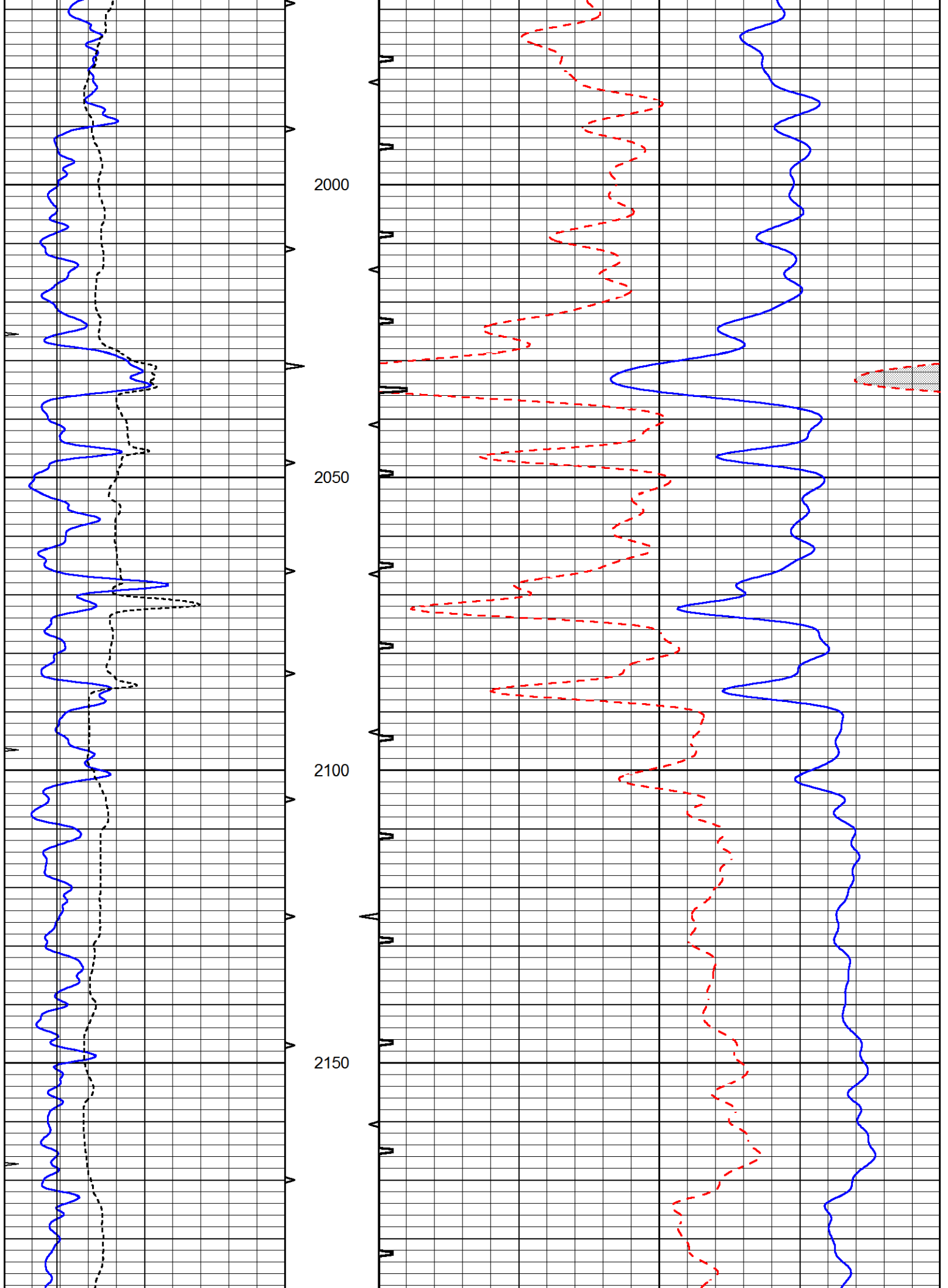


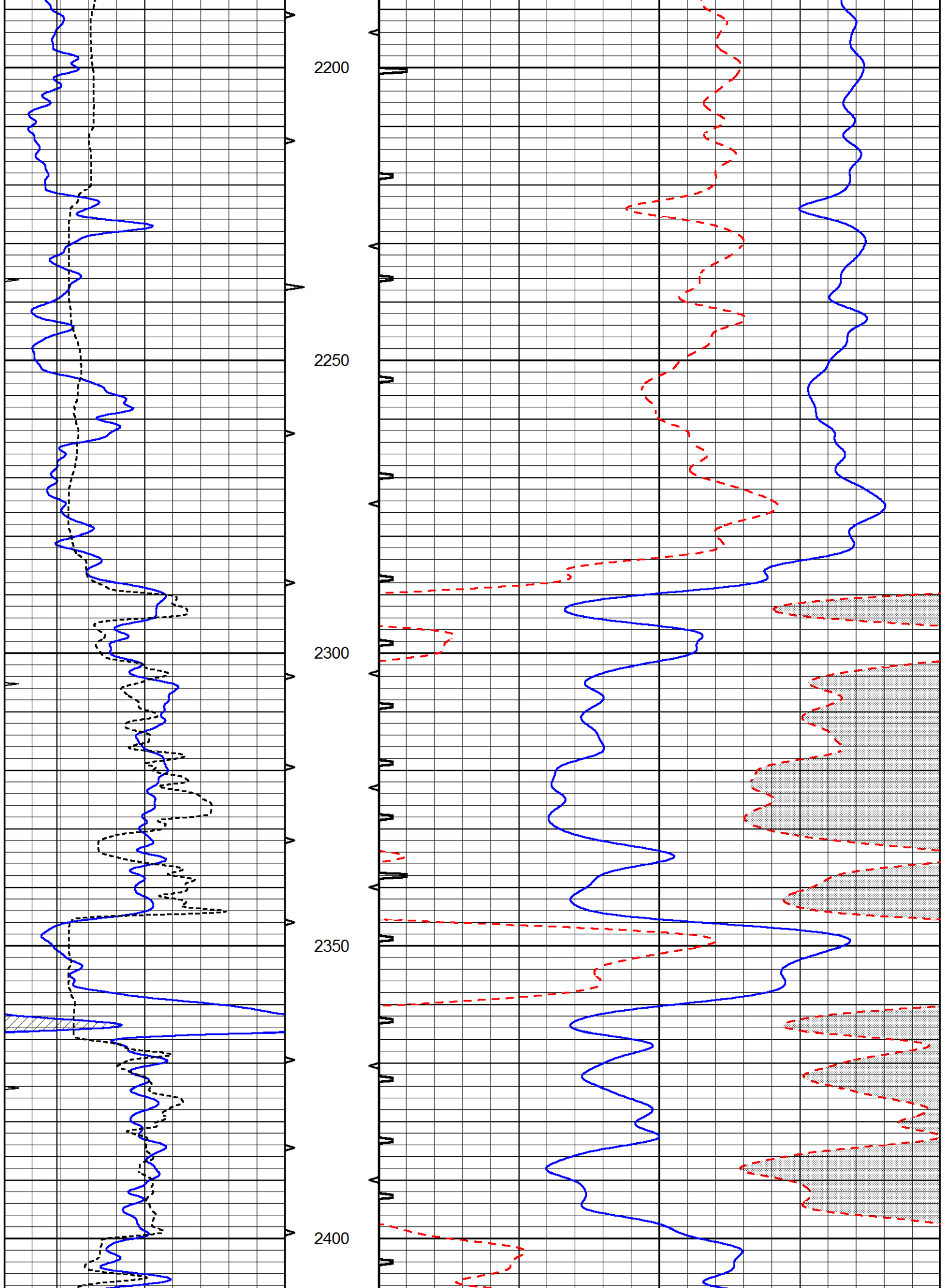


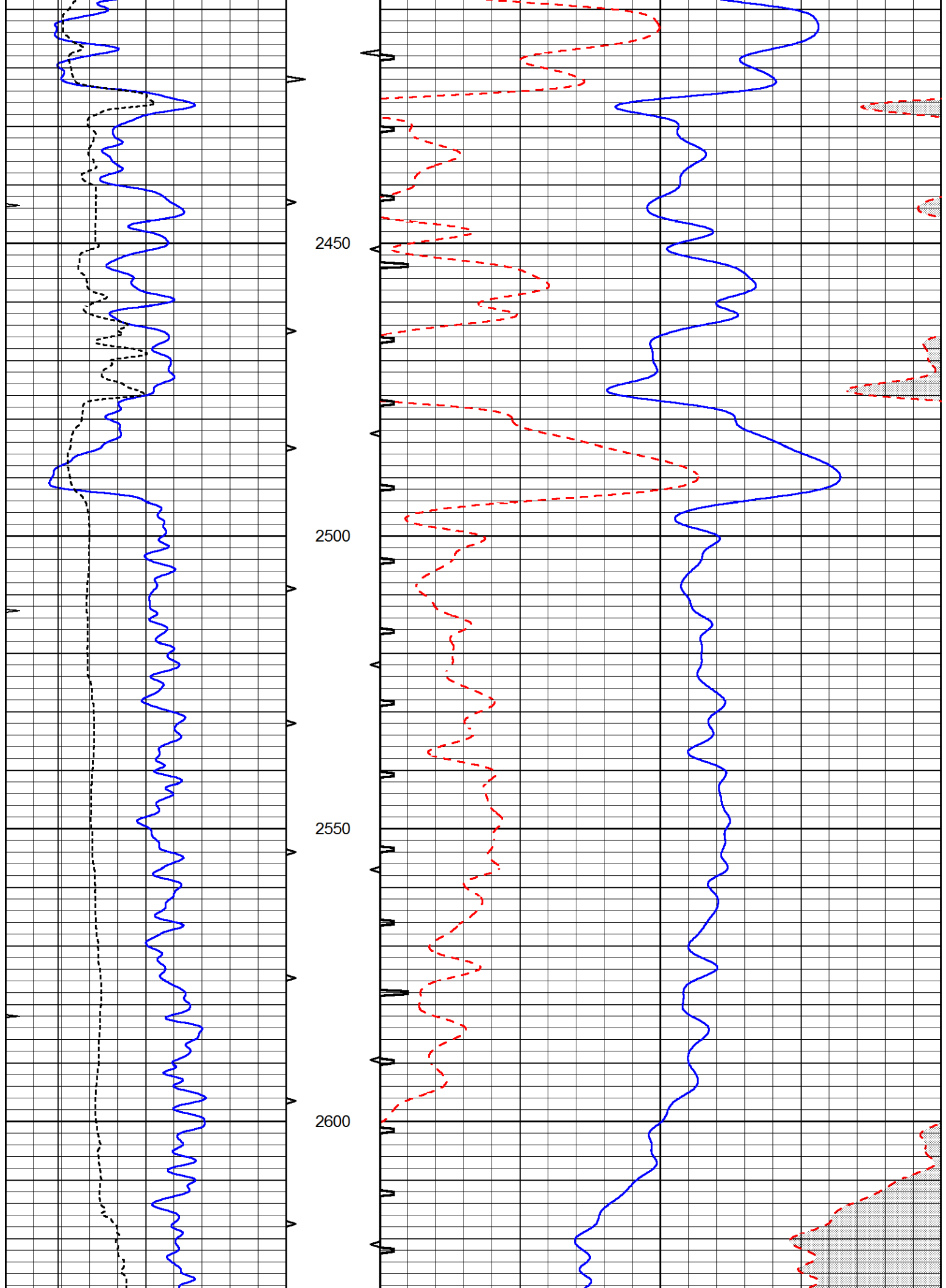


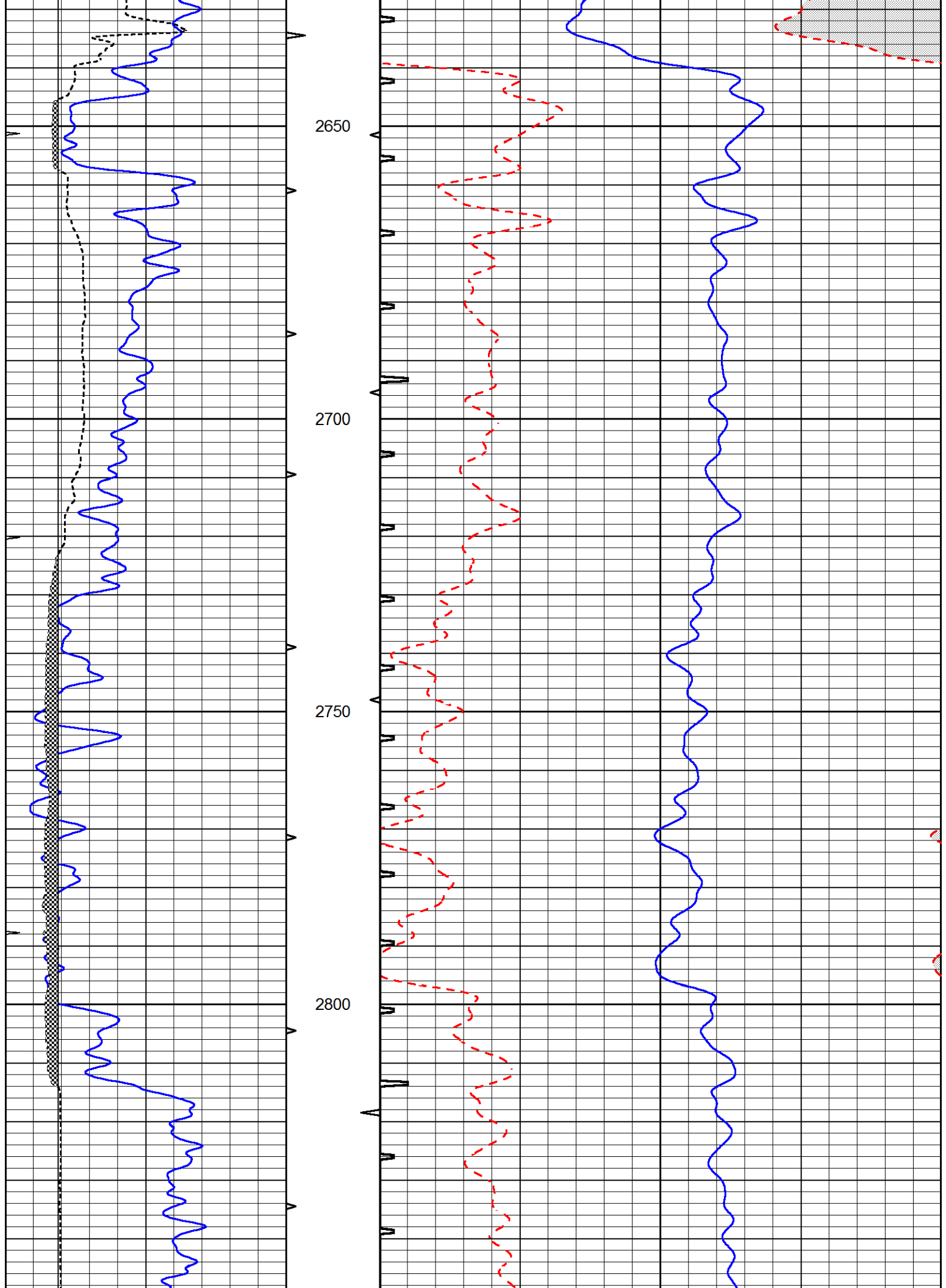


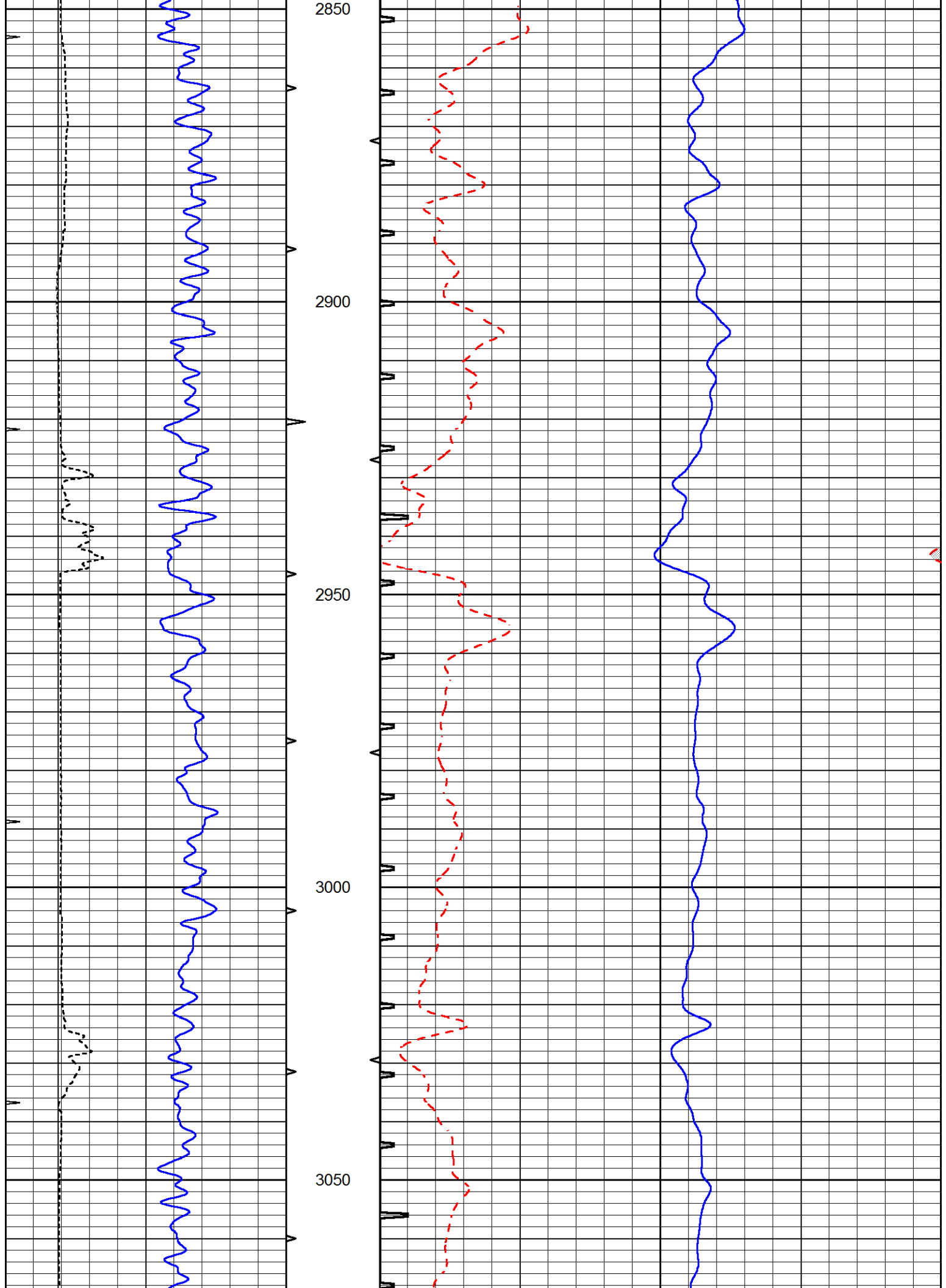


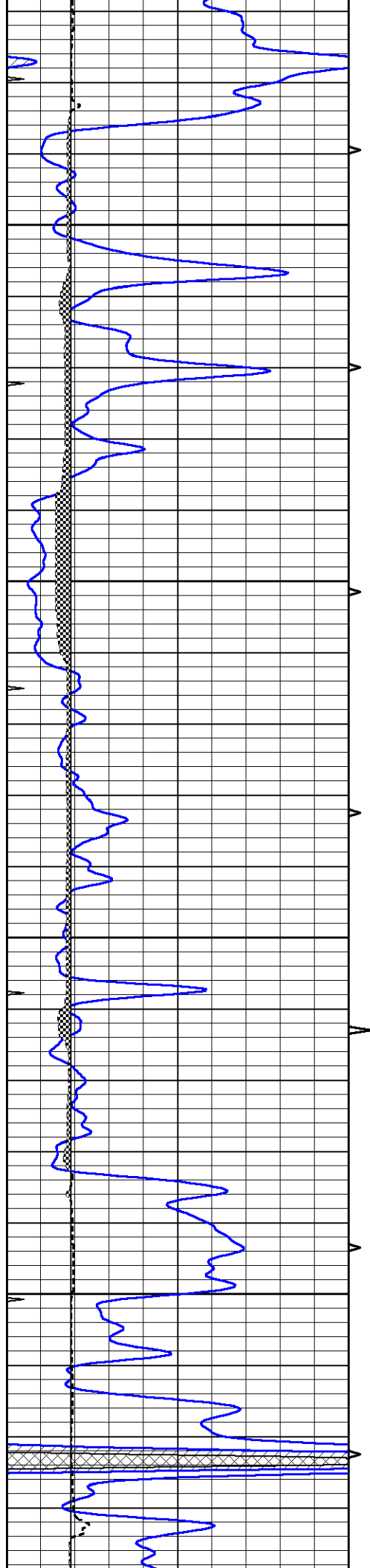










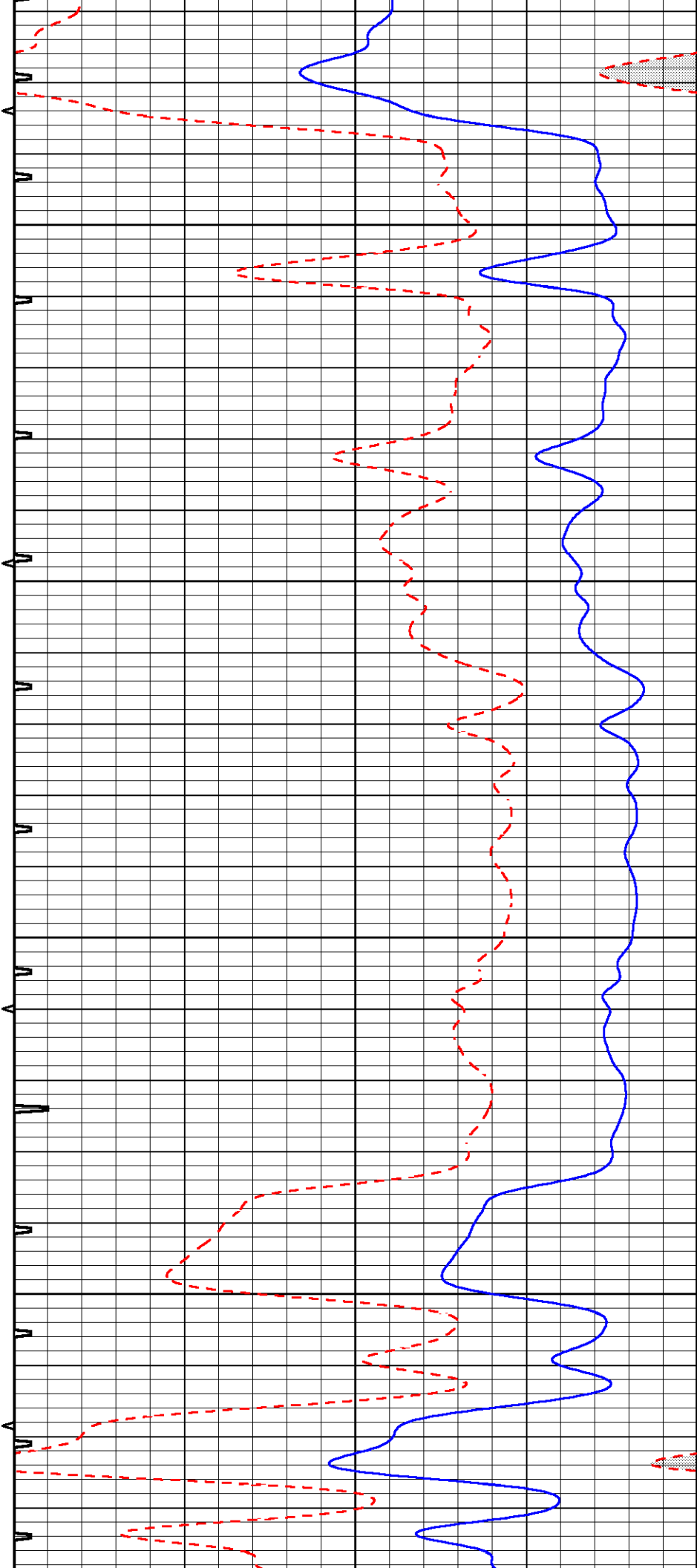


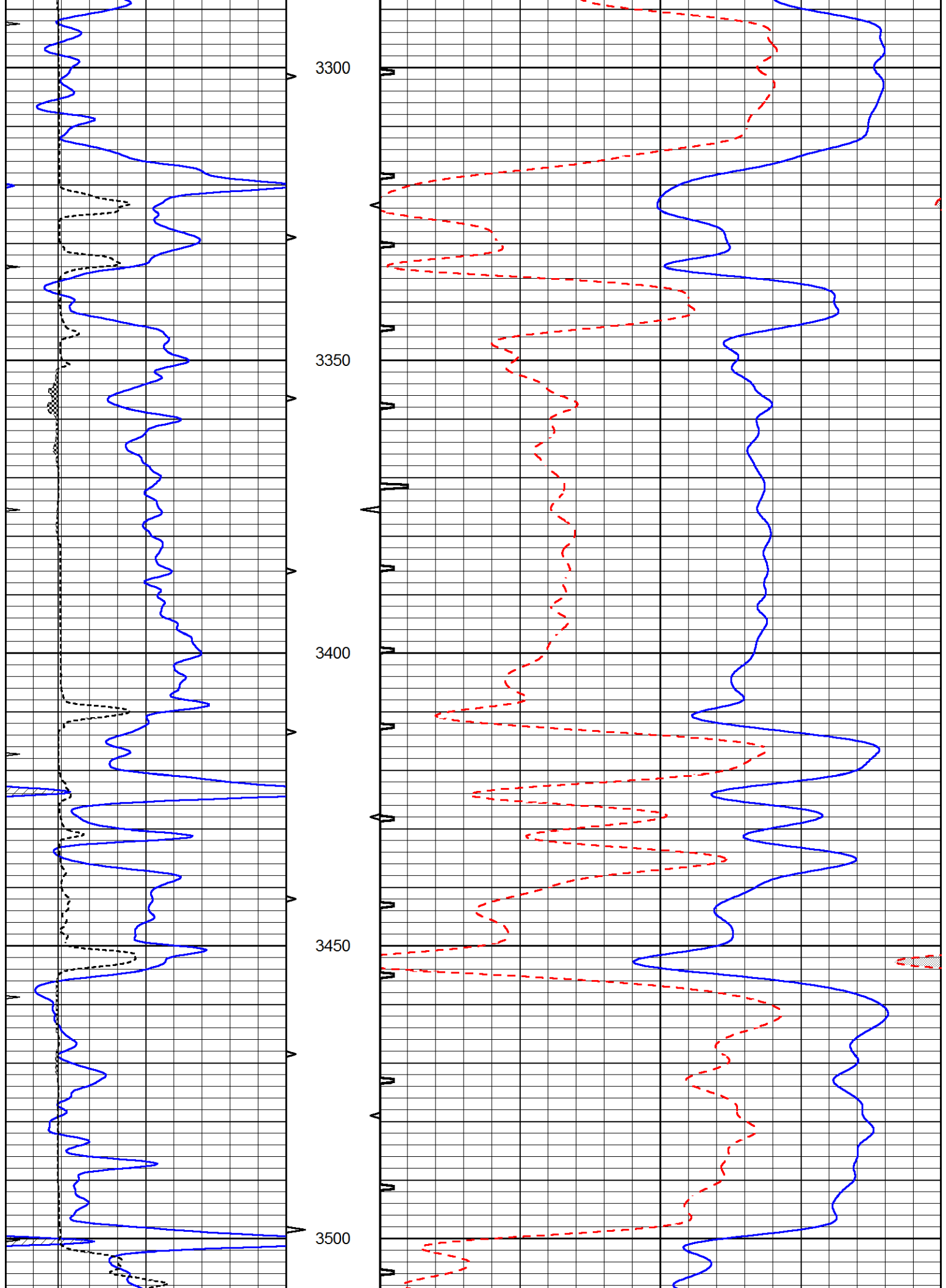
3100

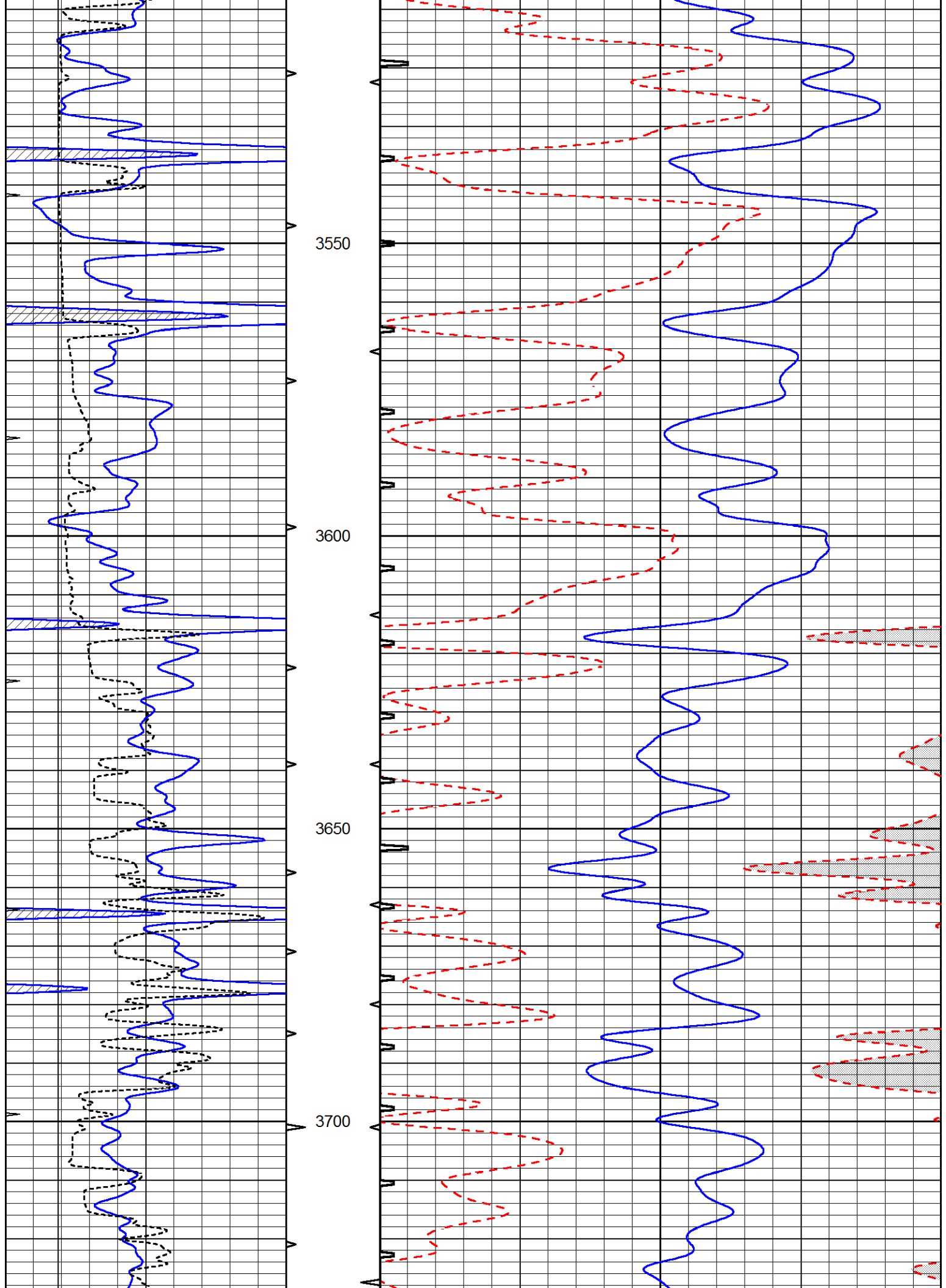
3150

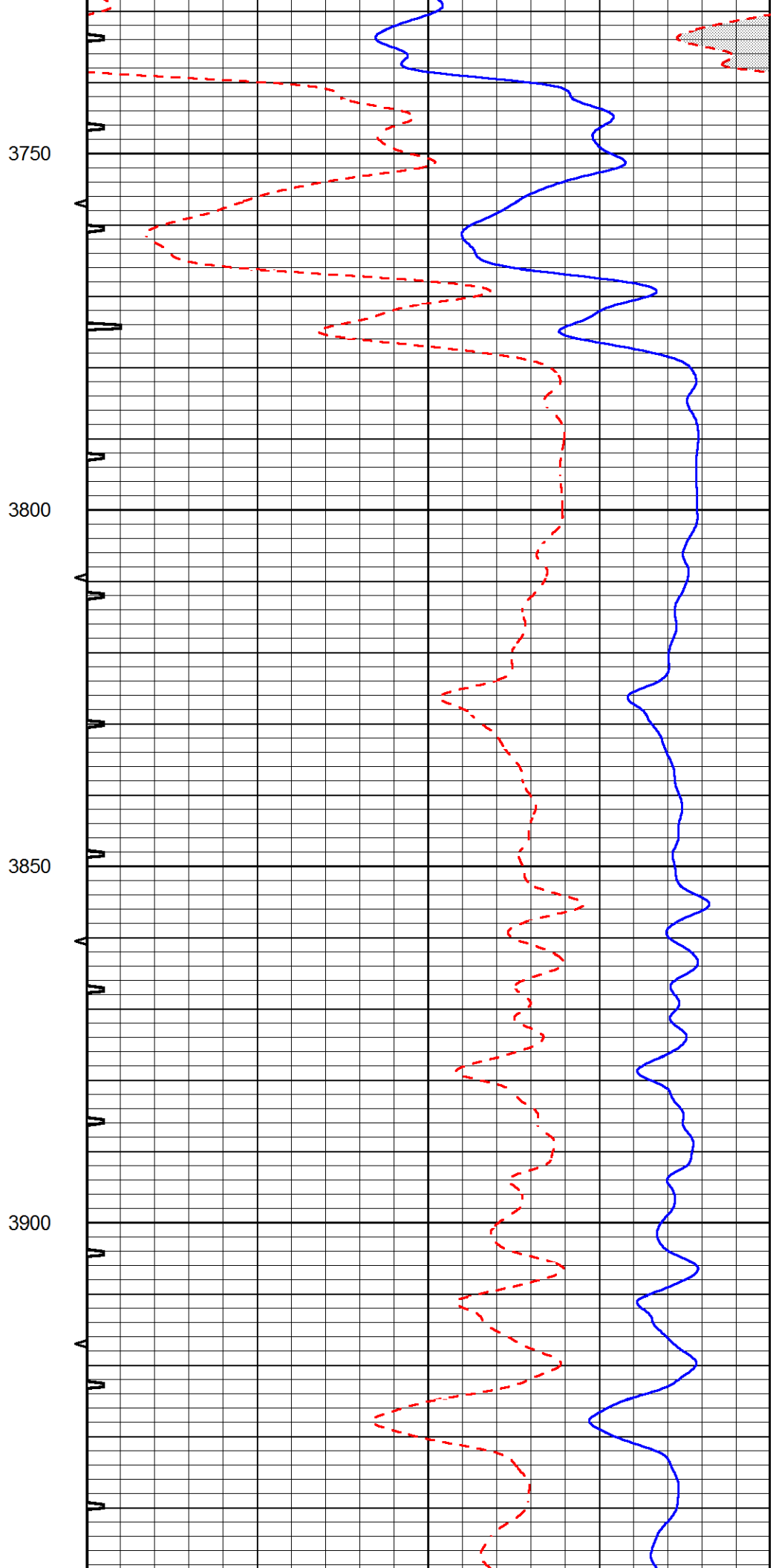
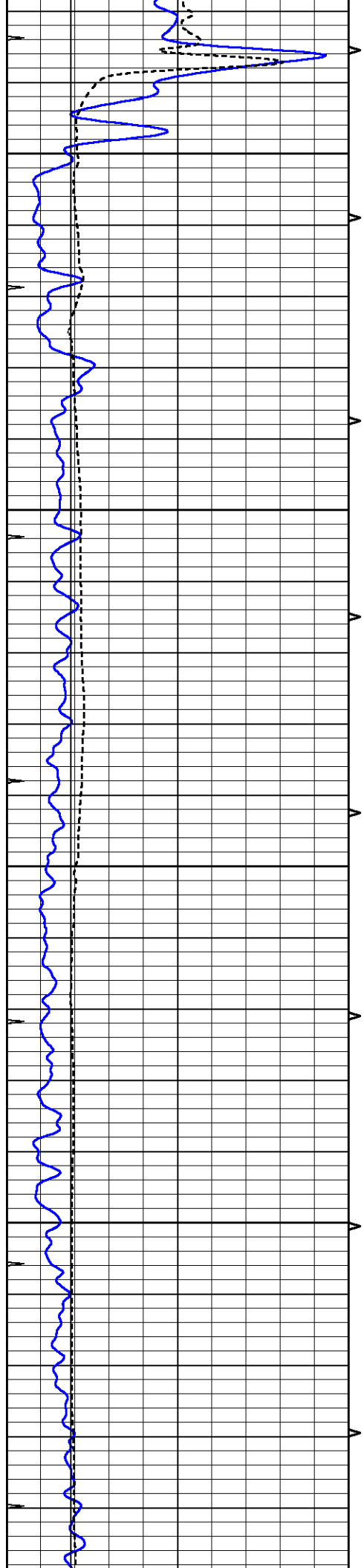
3200

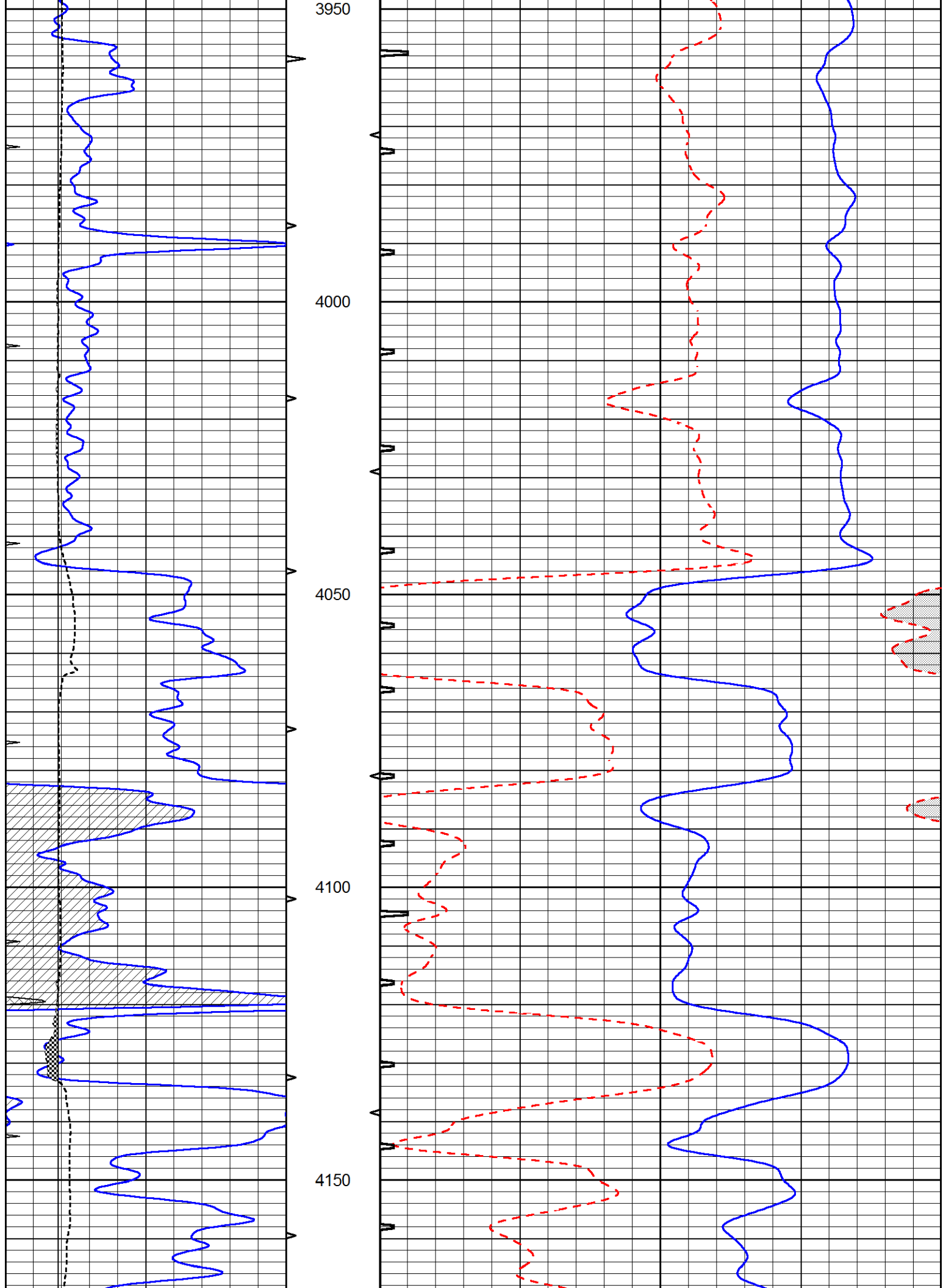
3250

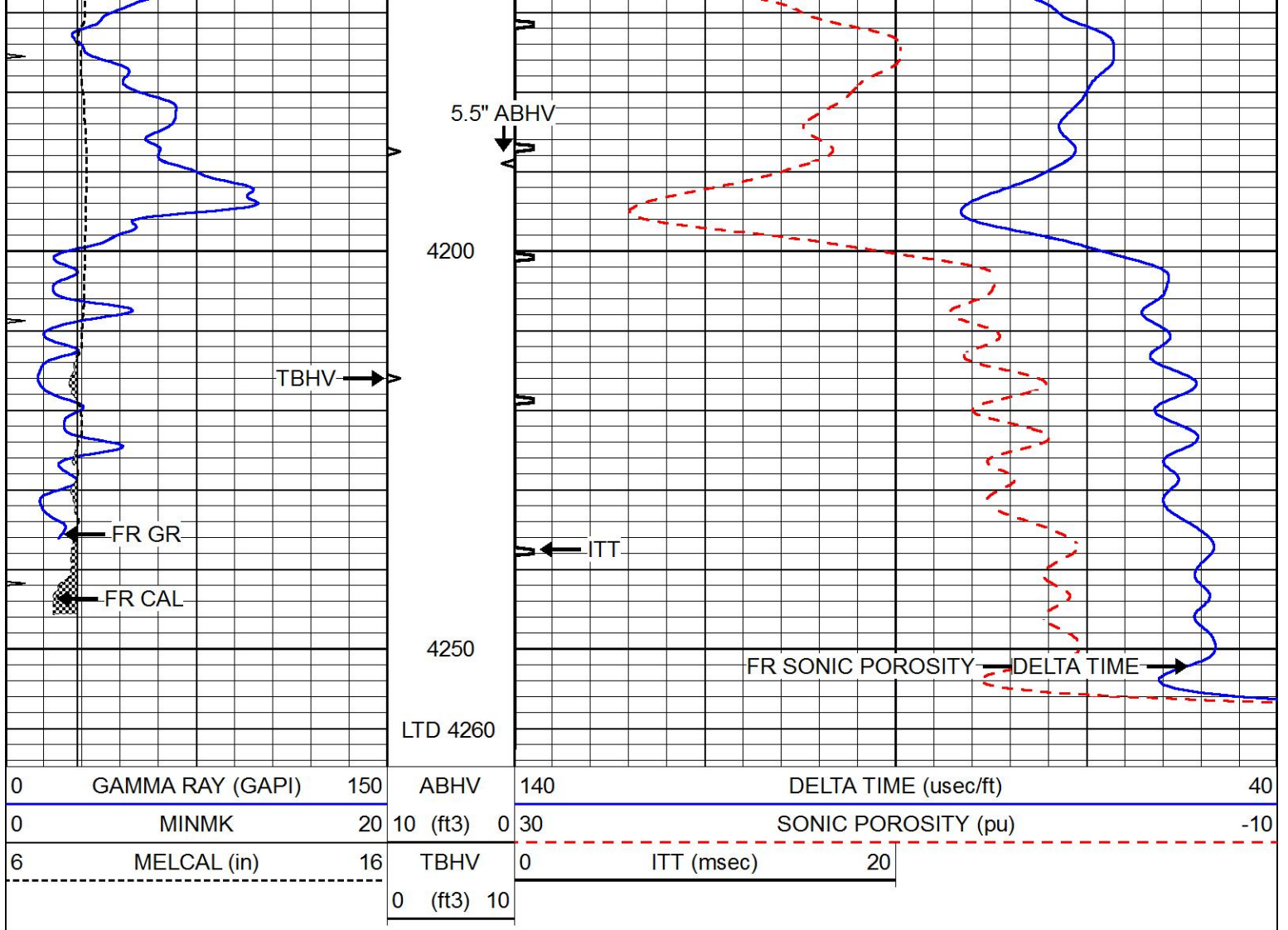












REPEAT SECTION

Database File 6557pe.db
 Dataset Pathname pass5.4
 Presentation Format _slt
 Dataset Creation Thu May 26 17:17:06 2022
 Charted by Depth in Feet scaled 1:240

0	GAMMA RAY (GAPI)	150	ABHV	140	DELTA TIME (usec/ft)	40
0	MINMK	20	10 (ft3) 0	30	SONIC POROSITY (pu)	-10
6	MELCAL (in)	16	TBHV	0	ITT (msec)	20
			0 (ft3) 10			

