

MICRO
LOG



Company MccOY PETROLEUM CORPORATION
 Well CARROLL "A" #1-6
 Field UNNAMED
 County SUMNER State KANSAS

Location: API #: 15-191-22847-0000
 1542' FSL & 2198' FEL
 SE - SW - NW - SE
 SEC 6 TWP 33S RGE 1E
 Permanent Datum GROUND LEVEL Elevation 1199
 Log Measured From KELLY BUSHING 12' A.G.L.
 Drilling Measured From KELLY BUSHING
 Other Services
 CDL/CNL/PE
 DIL/SONIC
 Elevation
 K.B. 1211
 D.F. 1209
 G.L. 1199

Date	5/26/22		
Run Number	TWO		
Depth Driller	4260		
Depth Logger	4260		
Bottom Logged Interval	4244		
Top Log Interval	3000		
Casing Driller	8 5/8"@252'		
Casing Logger	264		
Bit Size	7 7/8"		
Type Fluid in Hole	CHEMICAL MUD	CHLORIDES: 1,500 PPM	
Density / Viscosity	9.4/57		
pH / Fluid Loss	9.7/9.5		
Source of Sample	FLOWLINE		
Rm @ Meas. Temp	1.40@80F		
Rmf @ Meas. Temp	1.05@80F		
Rmc @ Meas. Temp	1.68@80F		
Source of Rmf / Rmc	MEASURED		
Rm @ BHT	.949@118F		
Time Circulation Stopped	4:5 HOURS		
Time Logger on Bottom	3:00 P.M.		
Maximum Recorded Temperature	118F		
Equipment Number	8916		
Location	HAYS, KANSAS		
Recorded By	JEFF LUEBBERS		
Witnessed By	DAVE WILLIAMS		

<<< Fold Here >>>

All interpretations are opinions based on inferences from electrical or other measurements and we cannot and do not guarantee the accuracy or correctness of any interpretation, and we shall not, except in the case of gross or willful negligence on our part, be liable or responsible for any loss, costs, damages, or expenses incurred or sustained by anyone resulting from any interpretation made by any of our officers, agents or employees. These interpretations are also subject to our general terms and conditions set out in our current Price Schedule.

Comments

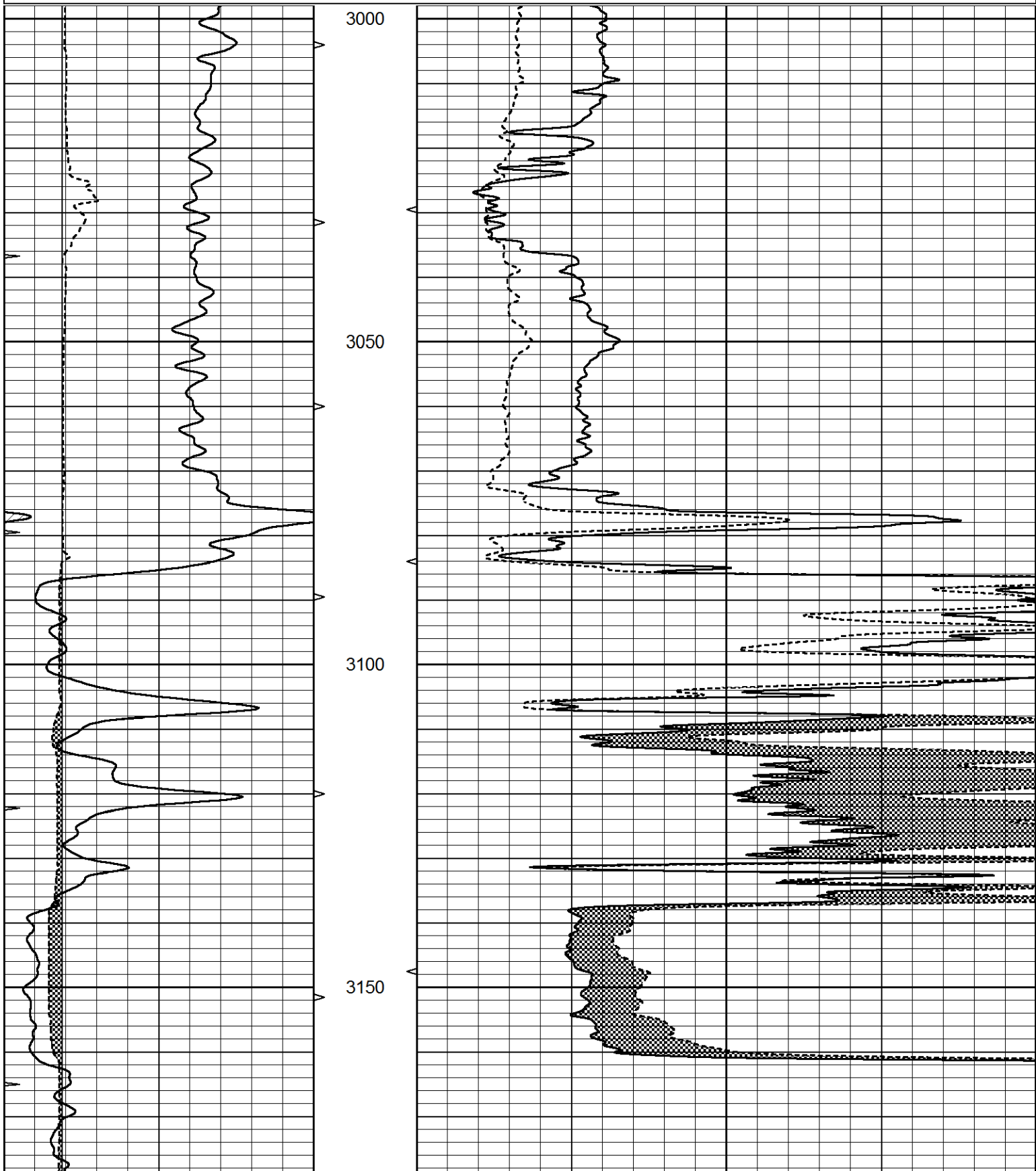
THANK YOU FOR USING ELI WIRELINE, HAYS, KS. (785) 628-6395
 DIRECTIONS:
 WELLINGTON, KS., (JUNCTION OF HWY 81 & 160) S. ON 81 TO "RD.60", 3E., 1/2N., W. INTO

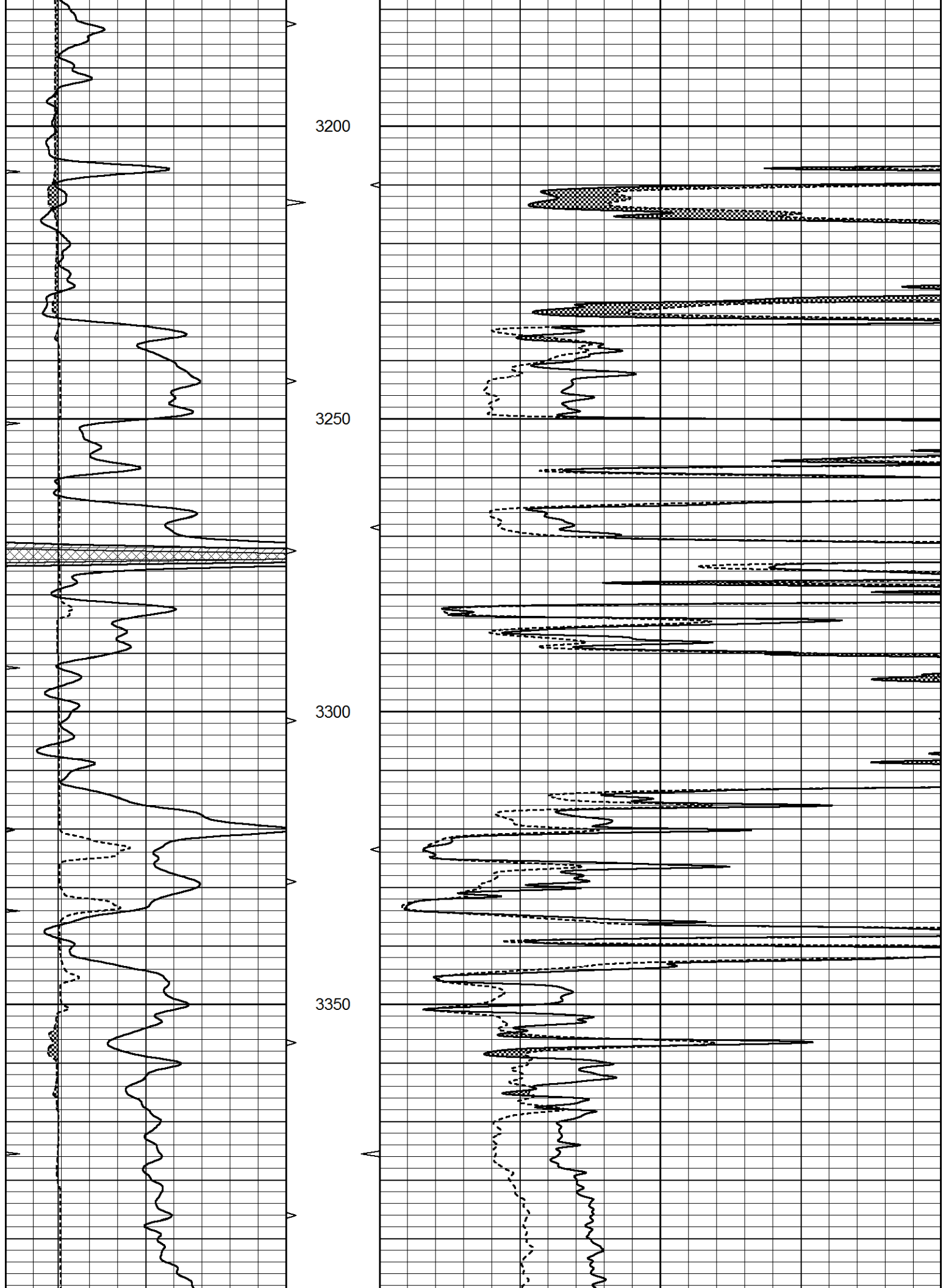


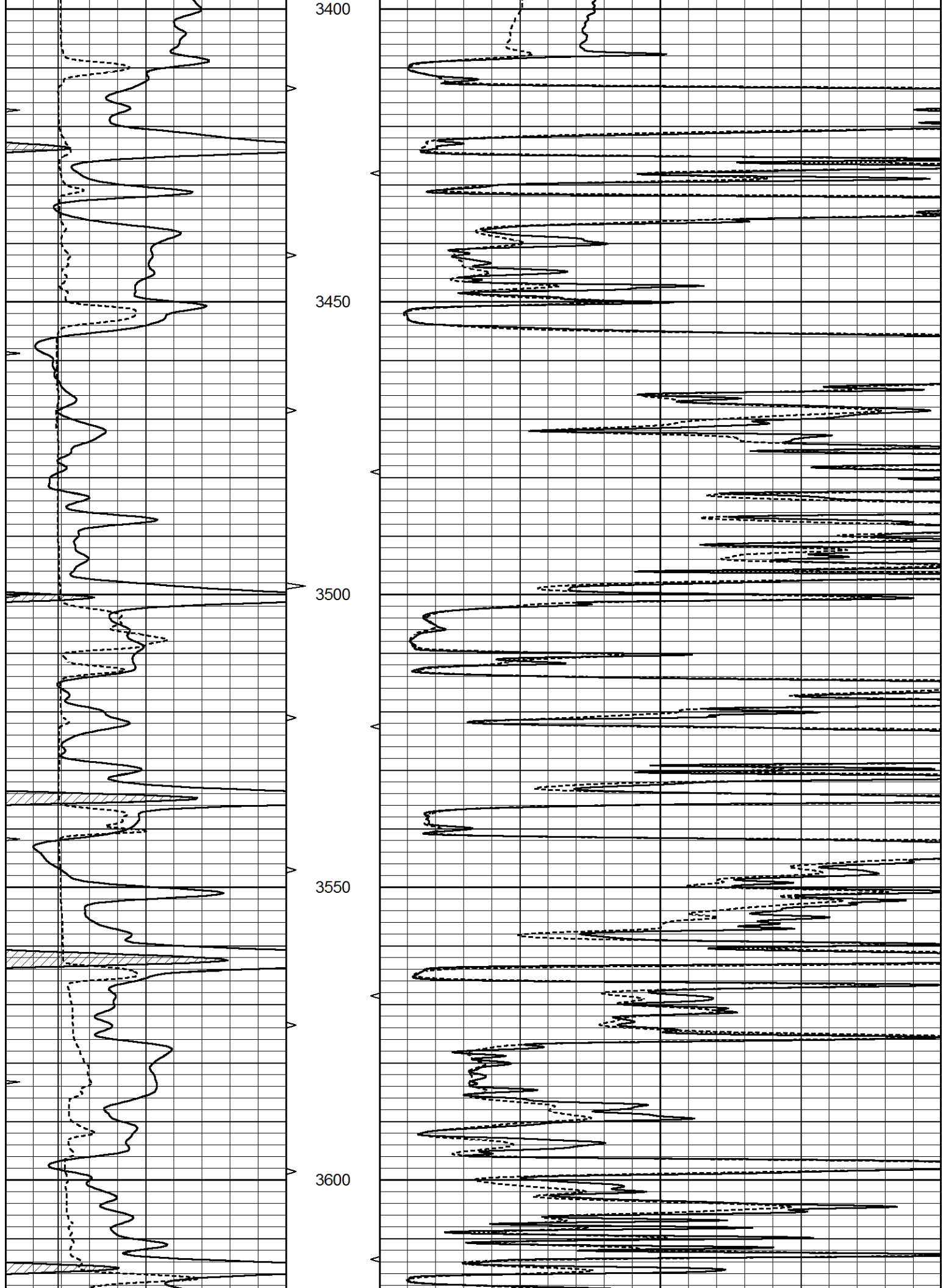
MAIN SECTION

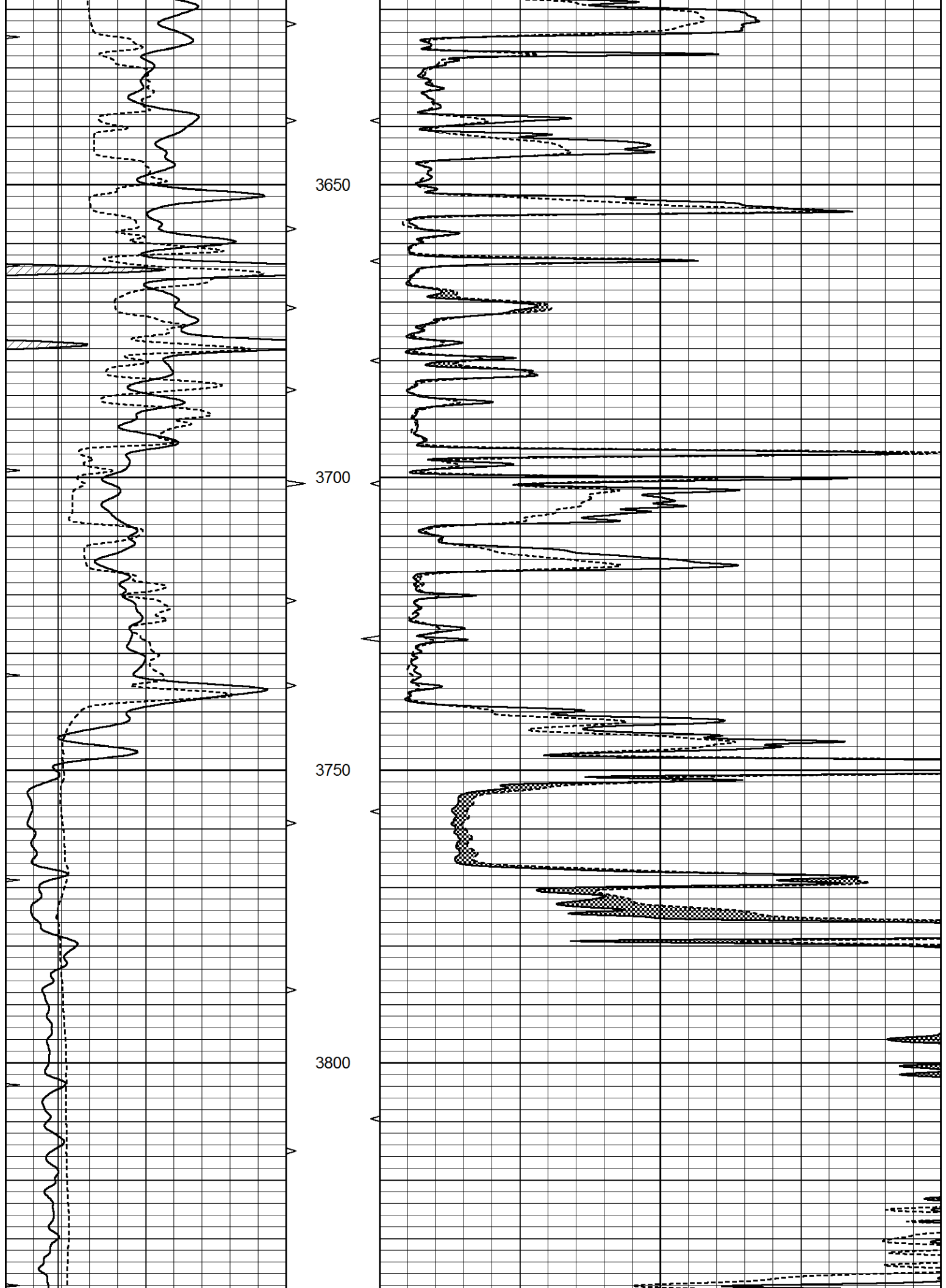
Database File 6557pe.db
 Dataset Pathname pass6.1M
 Presentation Format _micro
 Dataset Creation Thu May 26 16:36:22 2022
 Charted by Depth in Feet scaled 1:240

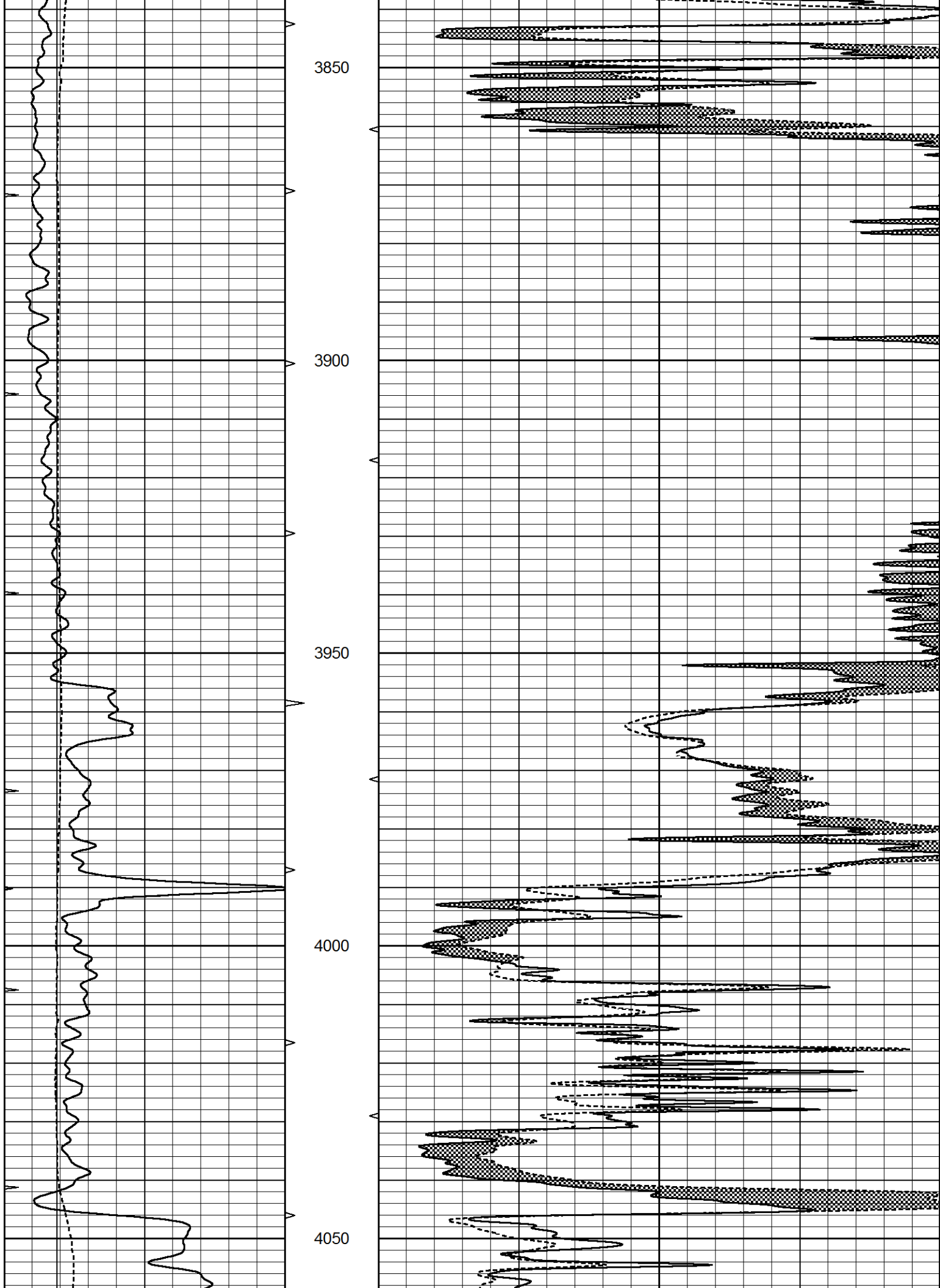
0	GAMMA RAY (GAPI)	150	ABHV	0	MEL1.5 (Ohm-m)	40
6	CALIPER (in)	16	10 (ft3)	0	MEL2.0 (Ohm-m)	40
0	MINMK	20	TBHV			
			0 (ft3)	10		

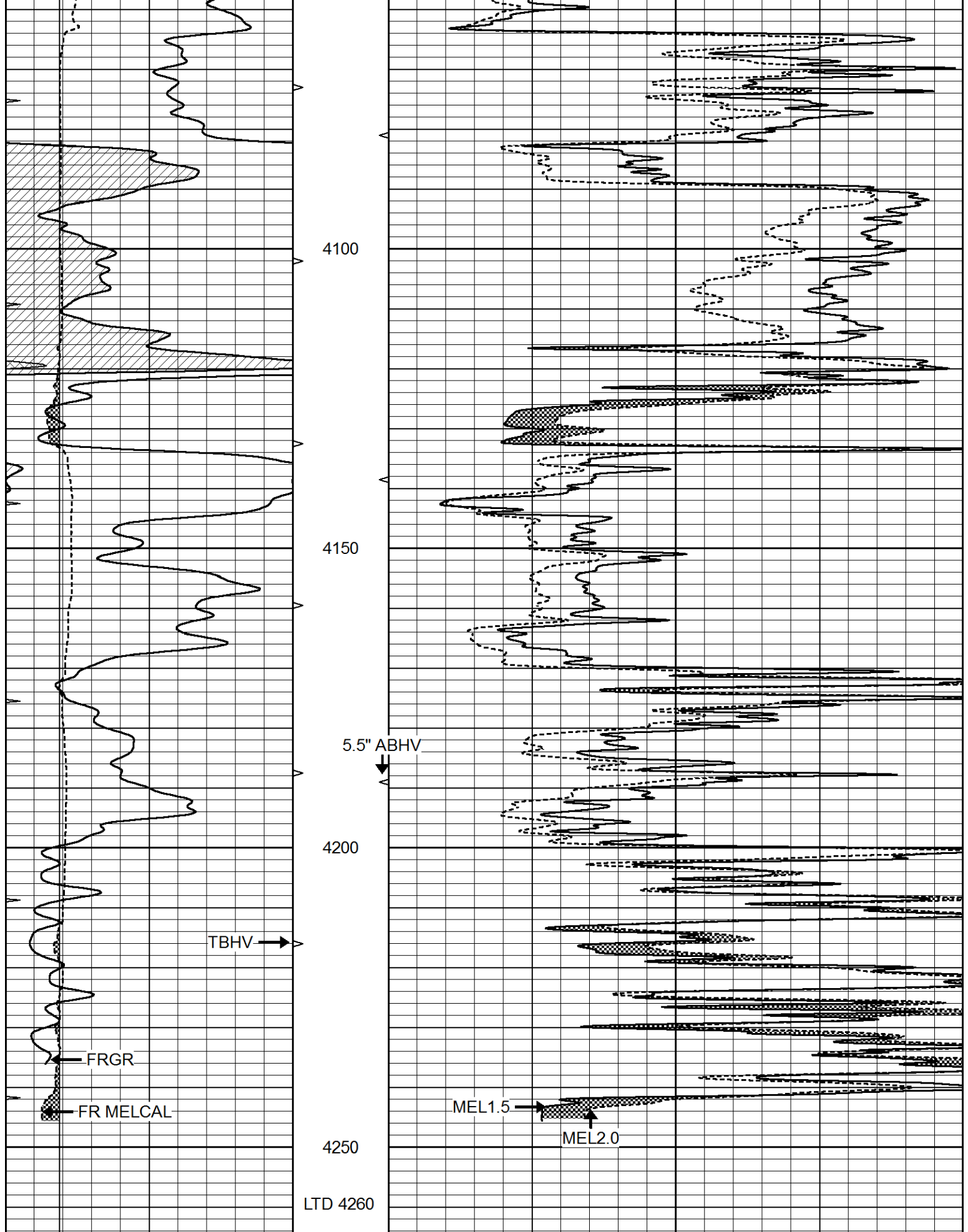












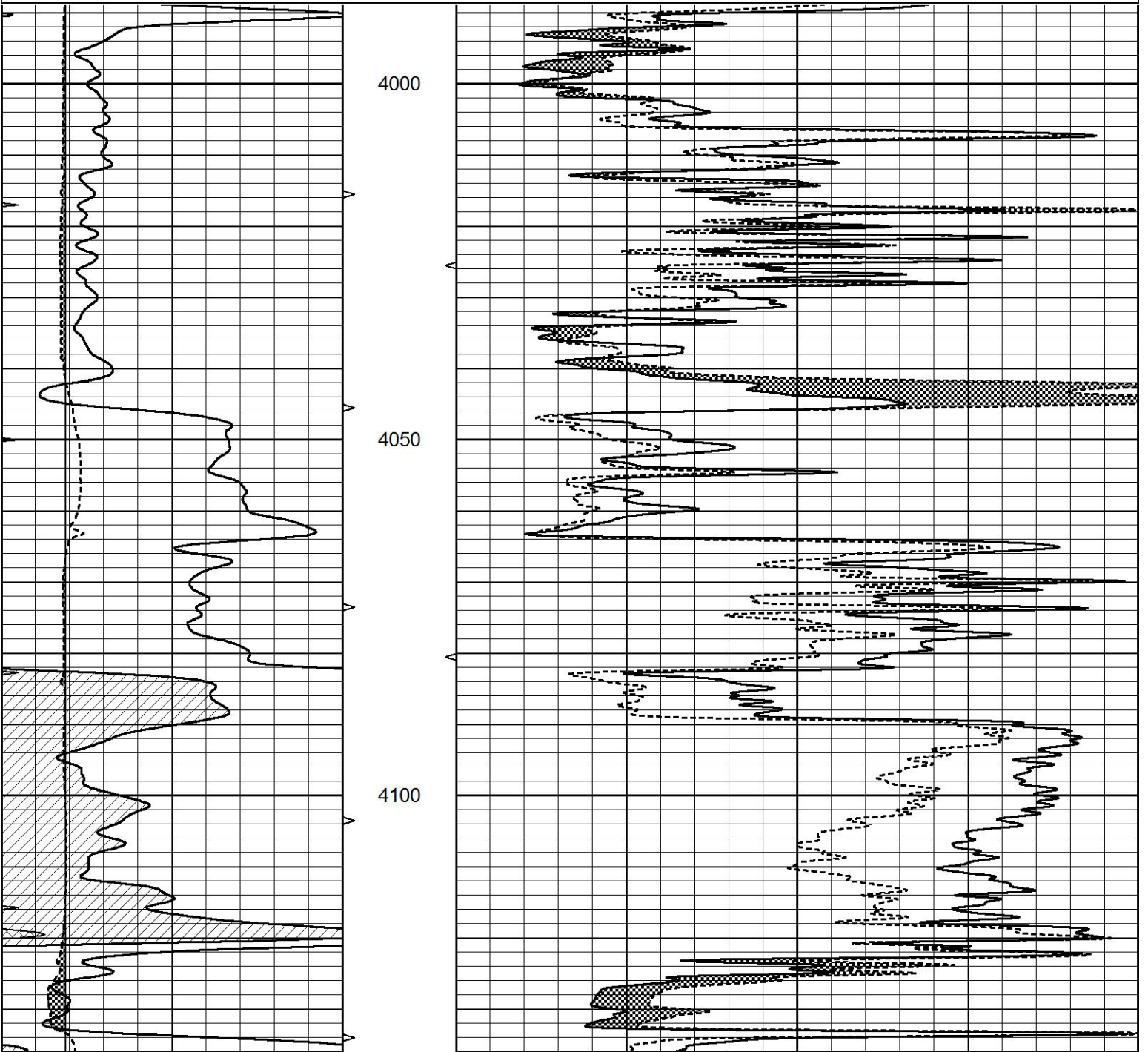
0	GAMMA RAY (GAPI)	150	ABHV	0	MEL1.5 (Ohm-m)	40
6	CALIPER (in)	16	10 (ft3)	0 0	MEL2.0 (Ohm-m)	40
0	MINMK	20	TBHV			

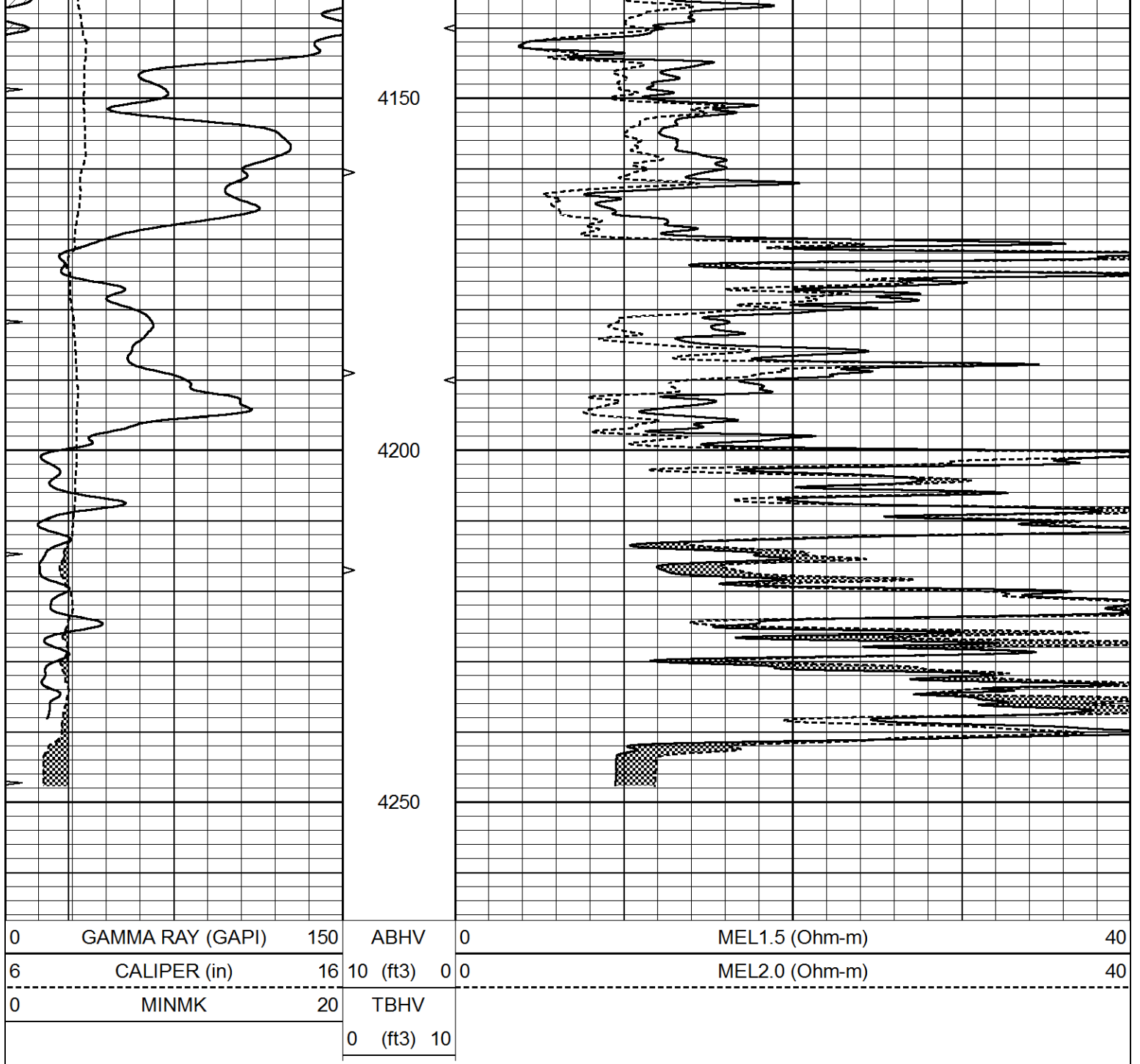


REPEAT SECTION

Database File 6557pe.db
 Dataset Pathname pass5.3
 Presentation Format _micro
 Dataset Creation Thu May 26 16:41:56 2022
 Charted by Depth in Feet scaled 1:240

0	GAMMA RAY (GAPI)	150	ABHV	0	MEL1.5 (Ohm-m)	40
6	CALIPER (in)	16	10 (ft3)	0	MEL2.0 (Ohm-m)	40
0	MINMK	20	TBHV			
			0 (ft3)	10		





Calibration Report

Database File 6557pe.db
 Dataset Pathname pass6.1M
 Dataset Creation Thu May 26 16:36:22 2022

MICRO Calibration Report

Serial Number: MICRO6
 Tool Model: PROBE
 Performed: Wed May 25 16:39:43 2022

Caliper Calibration: Gain=4.571 Offset=2.286

References	Low Cal	High Cal
Readings	8.000	16.000
	1.250	3.000

1.5" Calibration: Gain=35.000 Offset=0.300

	Low Cal	High Cal
References	0.000	20.000
Readings	0.002	0.624
2" Calibration:		
	Gain=40.000	Offset=0.000
	Low Cal	High Cal
References	0.000	20.000
Readings	0.006	0.468

Gamma Ray Calibration Report

Serial Number:	GR5	
Tool Model:	OPEN	
Performed:	Thu May 26 15:25:20 2022	
Calibrator Value:	1.0	GAPI
Background Reading:	0.0	cps
Calibrator Reading:	1.0	cps
Sensitivity:	0.5400	GAPI/cps