



DUAL INDUCTION LOG

Company MccOY PETROLEUM CORPORATION
 Well CARROLL "A" #1-6
 Field UNNAMED
 County SUMNER
 State KANSAS

Company MccOY PETROLEUM CORPORATION
 Well CARROLL "A" #1-6
 Field UNNAMED
 County SUMNER State KANSAS

Location: API #: 15-191-22847-0000
 1542' FSL & 2198' FEL
 SE - SW - NW - SE
 SEC 6 TWP 33S RGE 1E
 Permanent Datum GROUND LEVEL Elevation 1199
 Log Measured From KELLY BUSHING 12' A.G.L.
 Drilling Measured From KELLY BUSHING
 Other Services
 CDL/CNL/PE
 MEL/SONIC
 Elevation
 K.B. 1211
 D.F. 1209
 G.L. 1199

Date	5/26/22
Run Number	ONE
Depth Driller	4260
Depth Logger	4260
Bottom Logged Interval	4258
Top Log Interval	00
Casing Driller	8 5/8"@252'
Casing Logger	264
Bit Size	7 7/8"
Type Fluid in Hole	CHEMICAL MUD
Density / Viscosity	9.4/57
pH / Fluid Loss	9.7/9.5
Source of Sample	FLOWLINE
Rm @ Meas. Temp	1.40@80F
Rmf @ Meas. Temp	1.05@80F
Rmc @ Meas. Temp	1.68@80F
Source of Rmf / Rmc	MEASURED
Rm @ BHT	.949@118F
Time Circulation Stopped	2.5 HOURS
Time Logger on Bottom	12:45 P.M.
Maximum Recorded Temperature	118F
Equipment Number	8916
Location	HAYS, KANSAS
Recorded By	JEFF LUEBBERS
Witnessed By	DAVE WILLIAMS

<<< Fold Here >>>

All interpretations are opinions based on inferences from electrical or other measurements and we cannot and do not guarantee the accuracy or correctness of any interpretation, and we shall not, except in the case of gross or willful negligence on our part, be liable or responsible for any loss, costs, damages, or expenses incurred or sustained by anyone resulting from any interpretation made by any of our officers, agents or employees. These interpretations are also subject to our general terms and conditions set out in our current Price Schedule.

Comments

THANK YOU FOR USING ELI WIRELINE, HAYS, KS. (785) 628-6395
 DIRECTIONS:
 WELLINGTON, KS., (JUNCTION OF HWY 81 & 160) S. ON 81 TO "RD.60", 3E., 1/2N., W. INTO

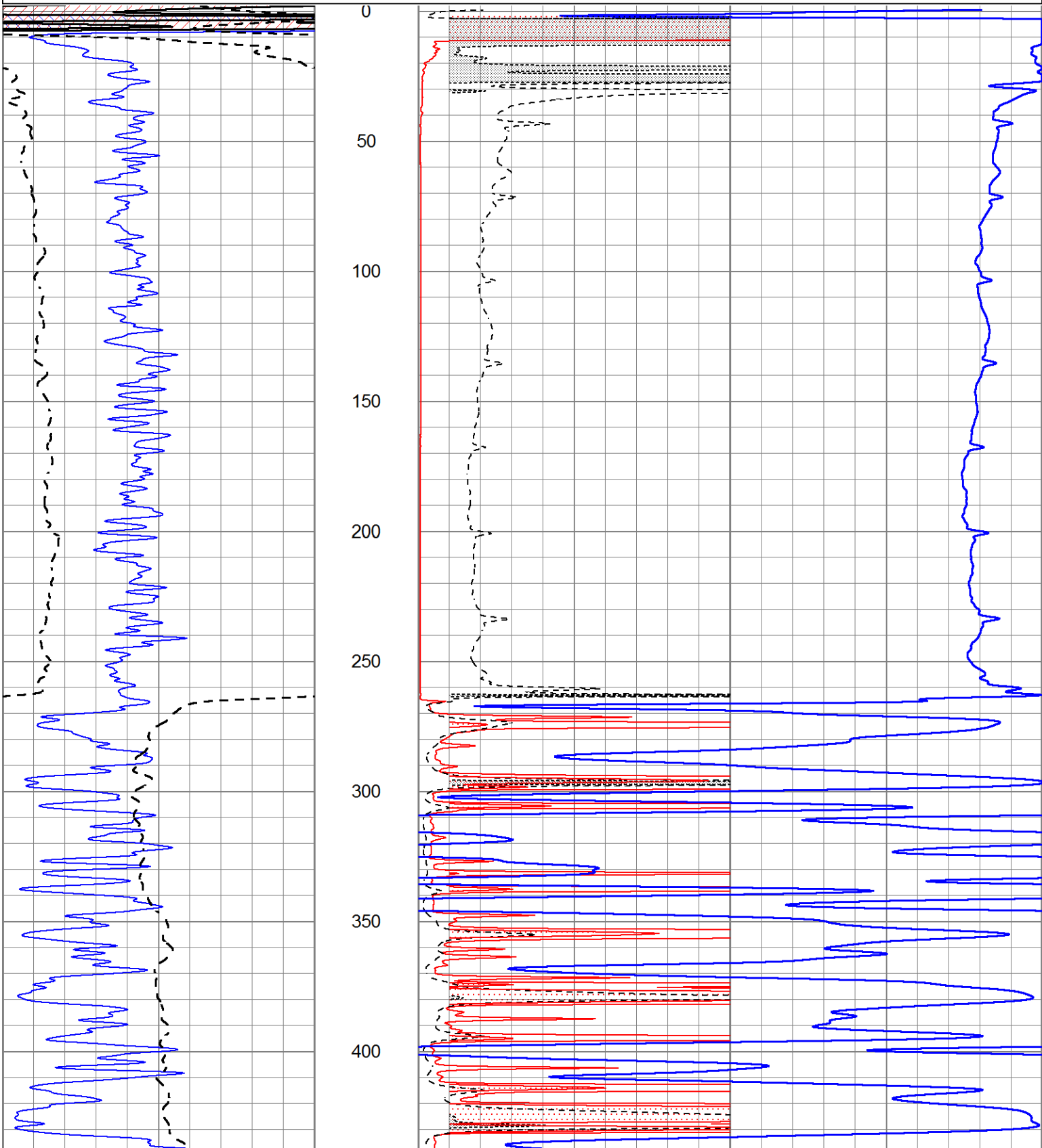


MAIN SECTION

Database File 6557pe.db
 Dataset Pathname pass3.1M
 Presentation Format _dil2
 Dataset Creation Thu May 26 14:57:27 2022
 Charted by Depth in Feet scaled 1:600

0 Gamma Ray (GAPI) 150
 -100 SP (mV) 100

1000 CILD (mmho/m) 0
 0 RLL3 (Ohm-m) 50
 0 RILD (Ohm-m) 50
 50 RILD X10 (Ohm-m) 500
 50 RLL3 X10 (Ohm-m) 500



450

500

550

600

650

700

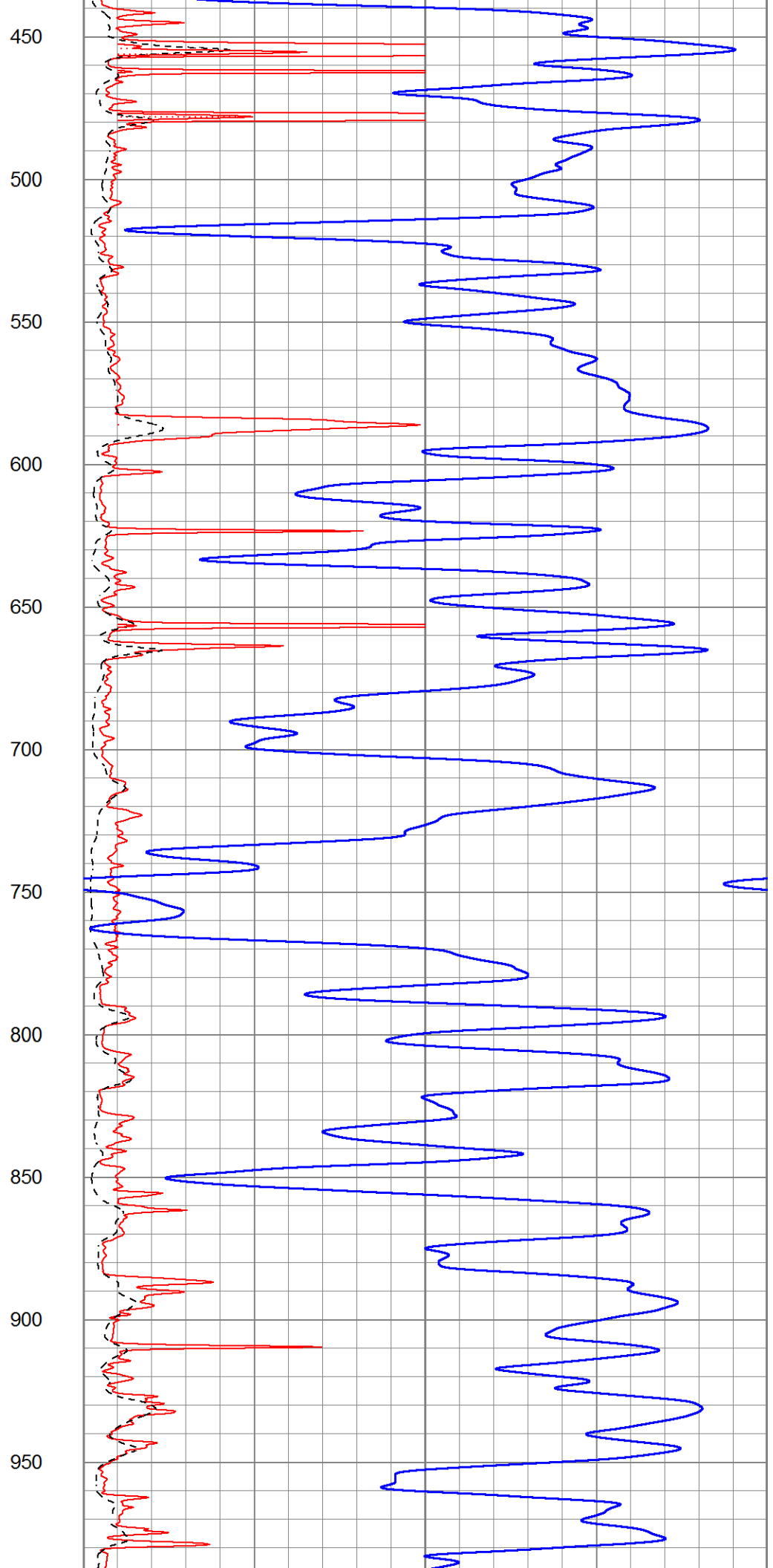
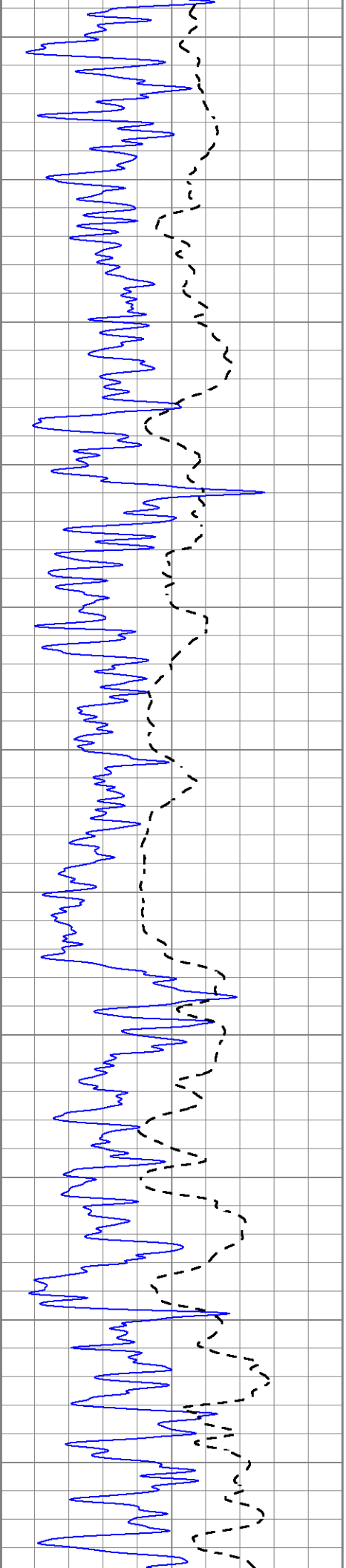
750

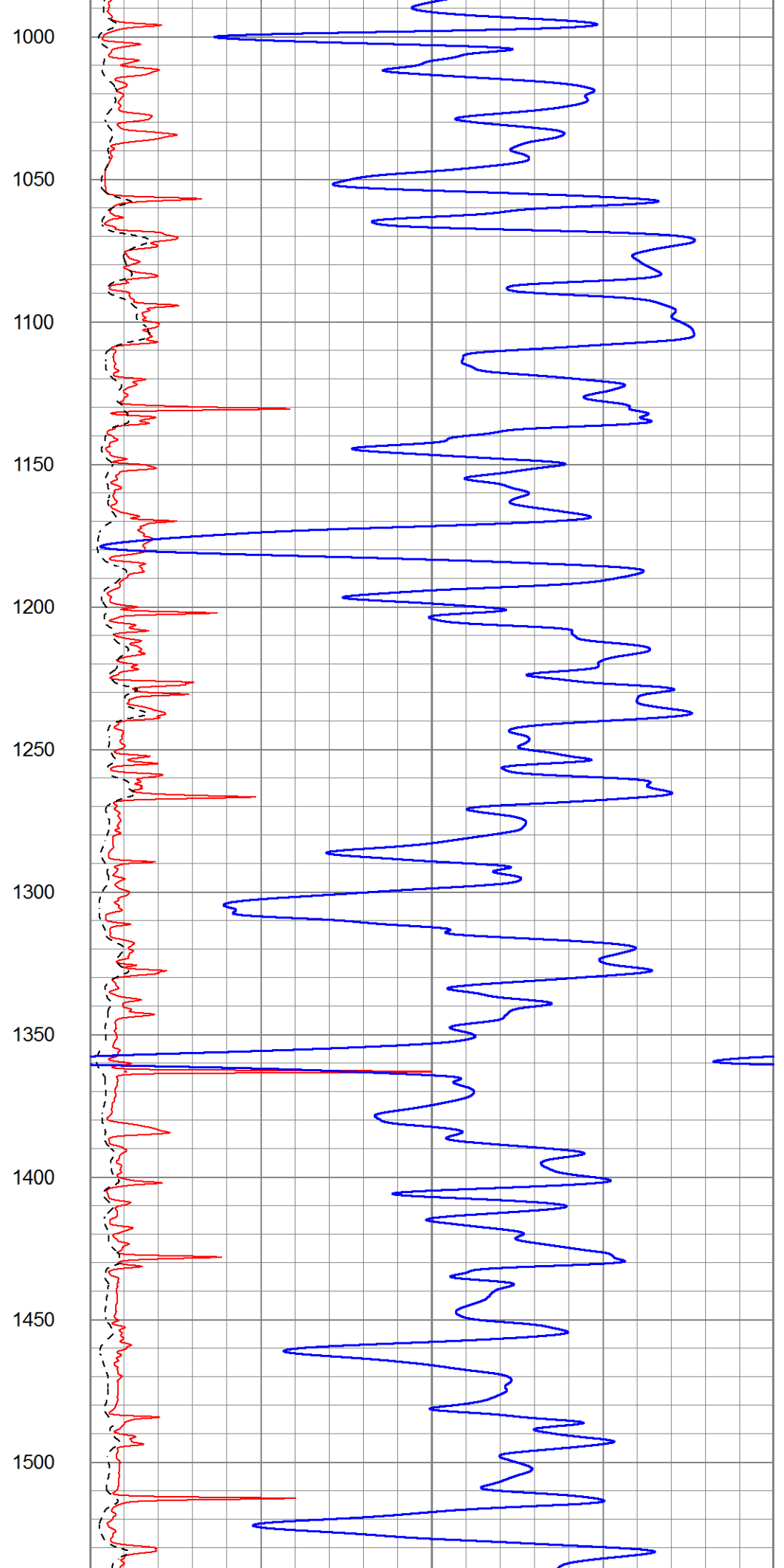
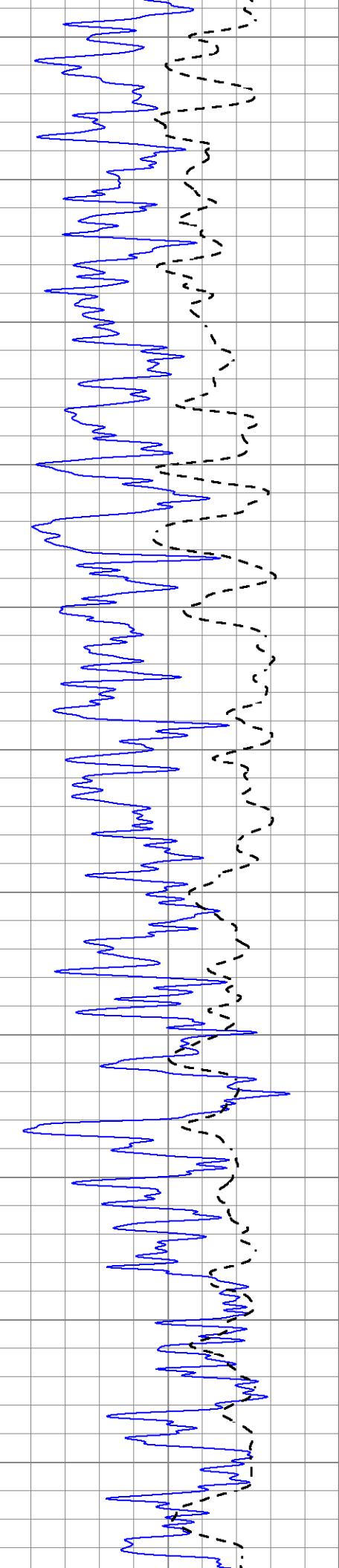
800

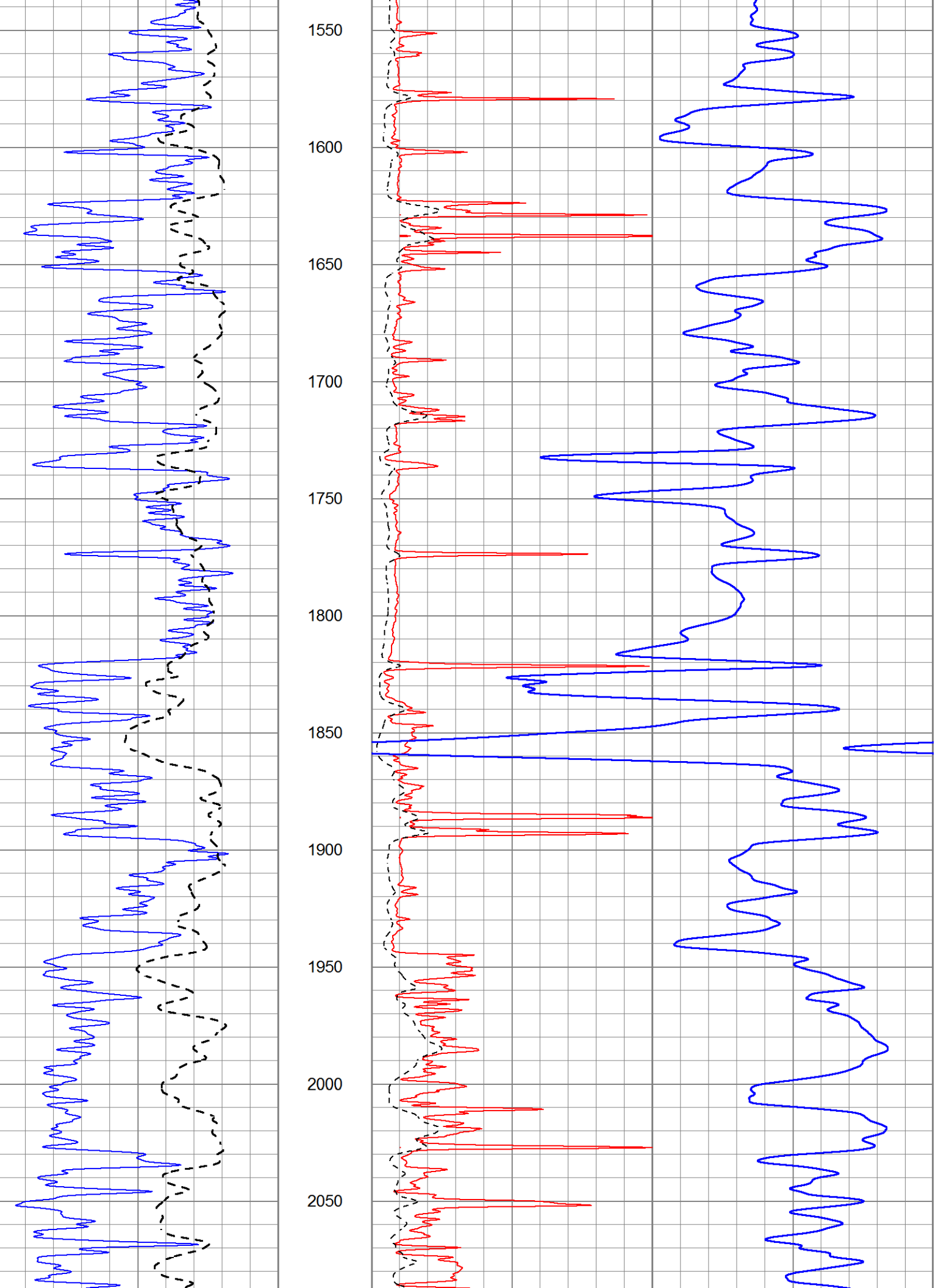
850

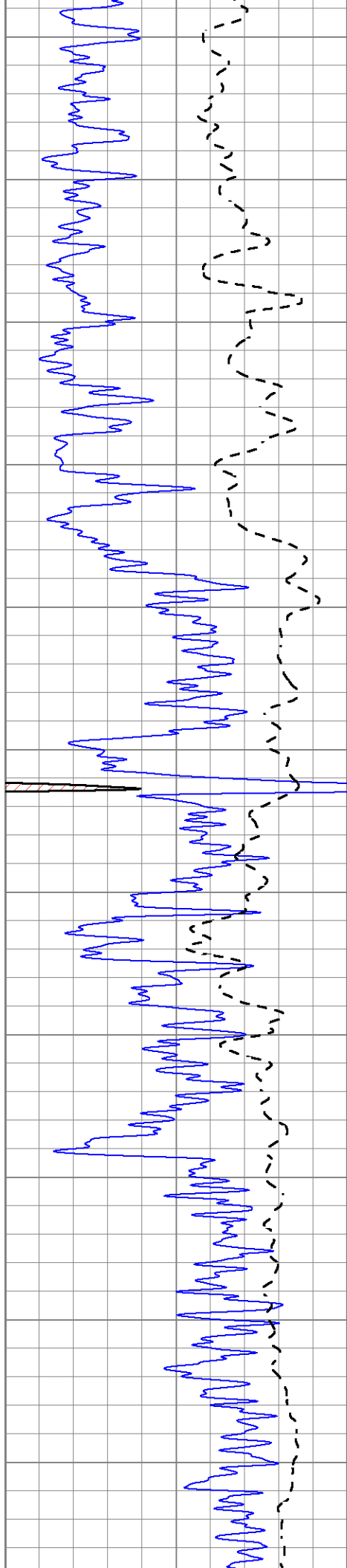
900

950

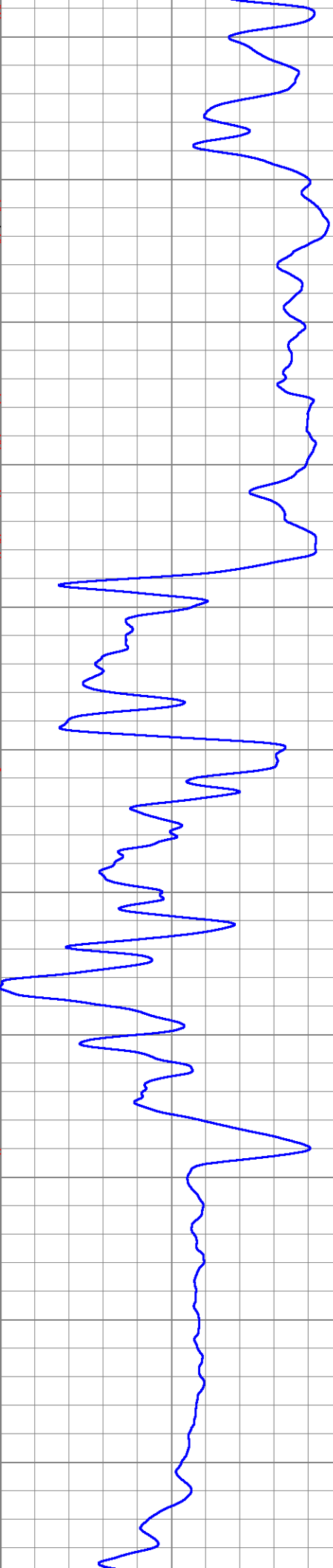
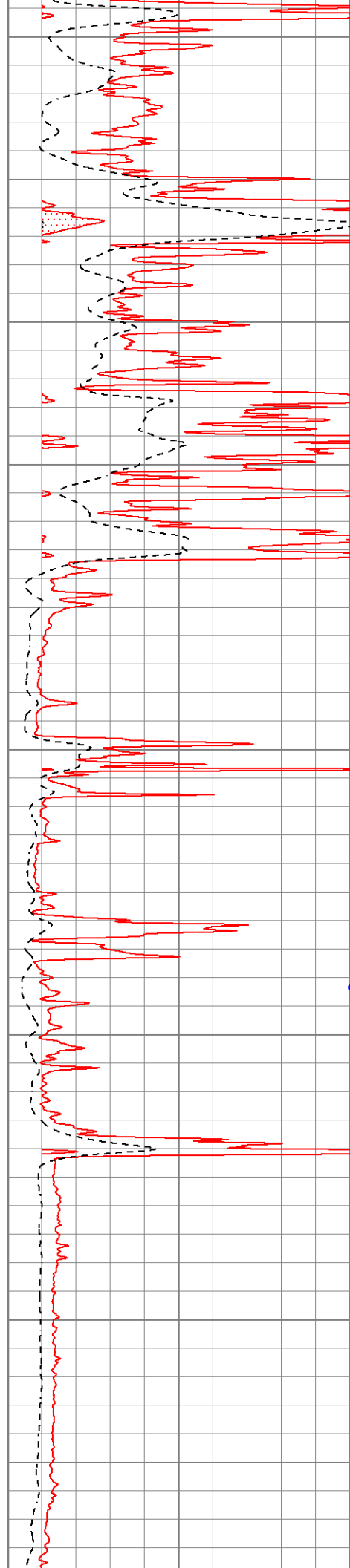


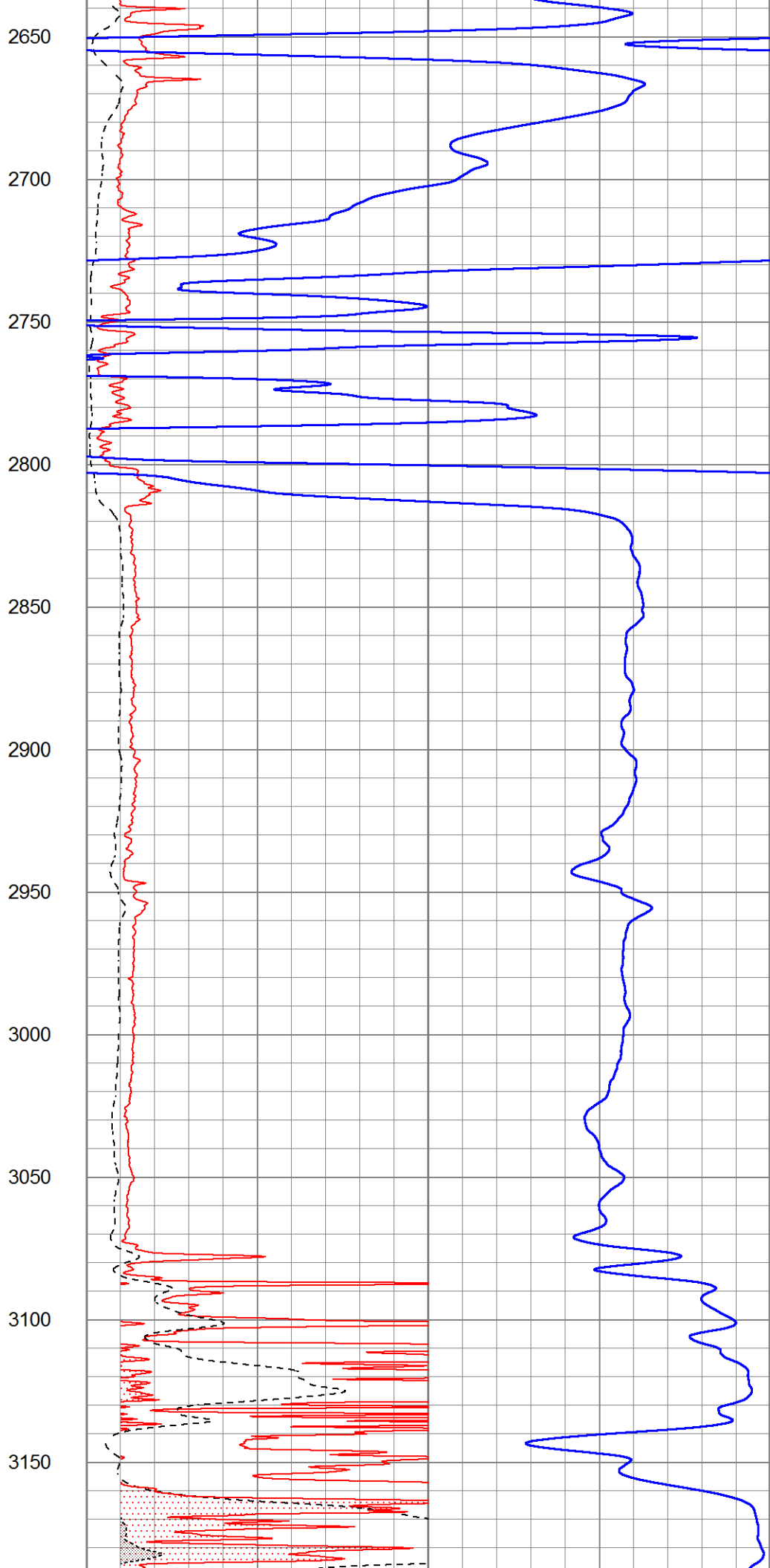
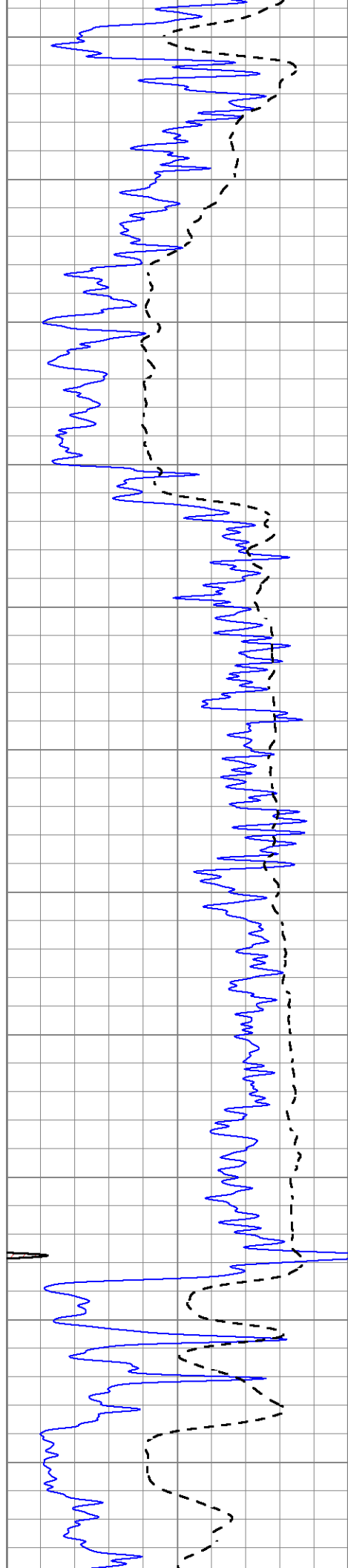


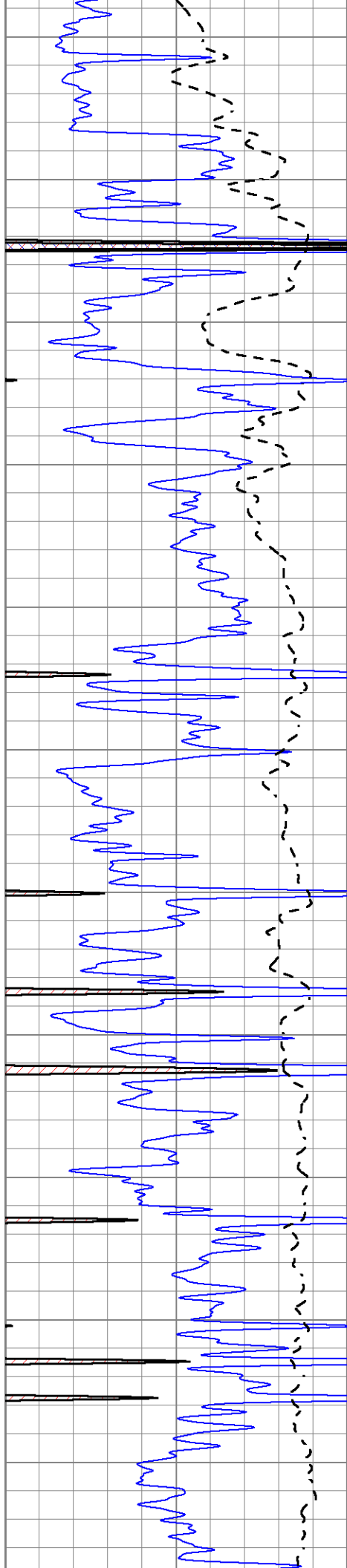




2100
2150
2200
2250
2300
2350
2400
2450
2500
2550
2600







3200

3250

3300

3350

3400

3450

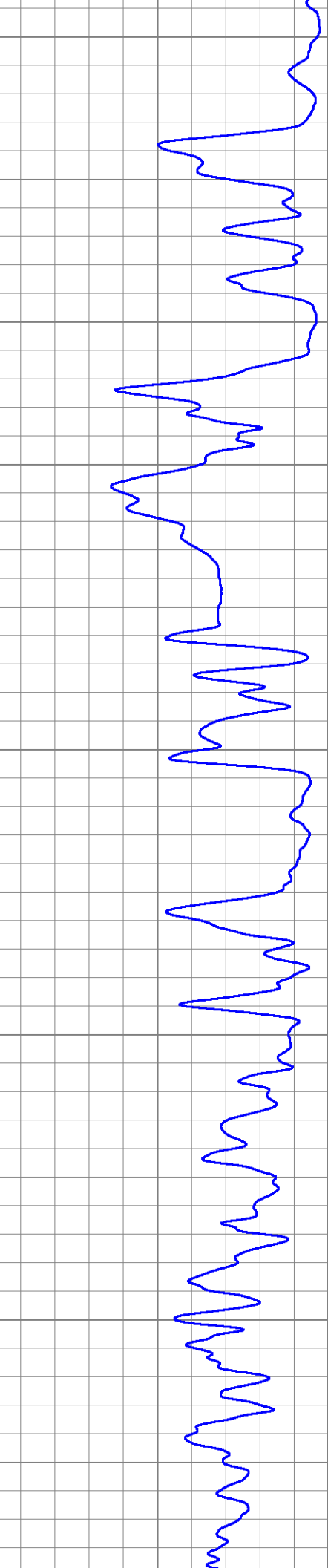
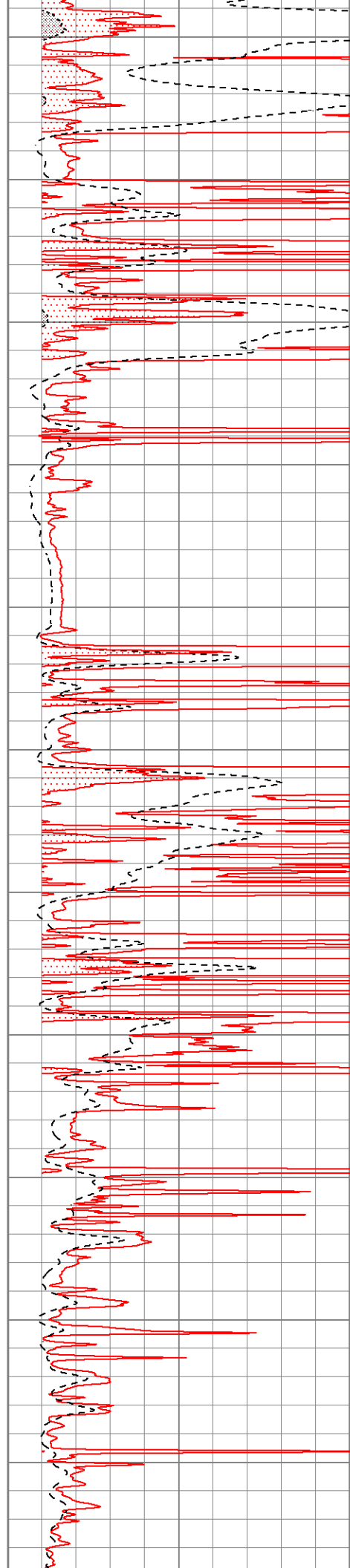
3500

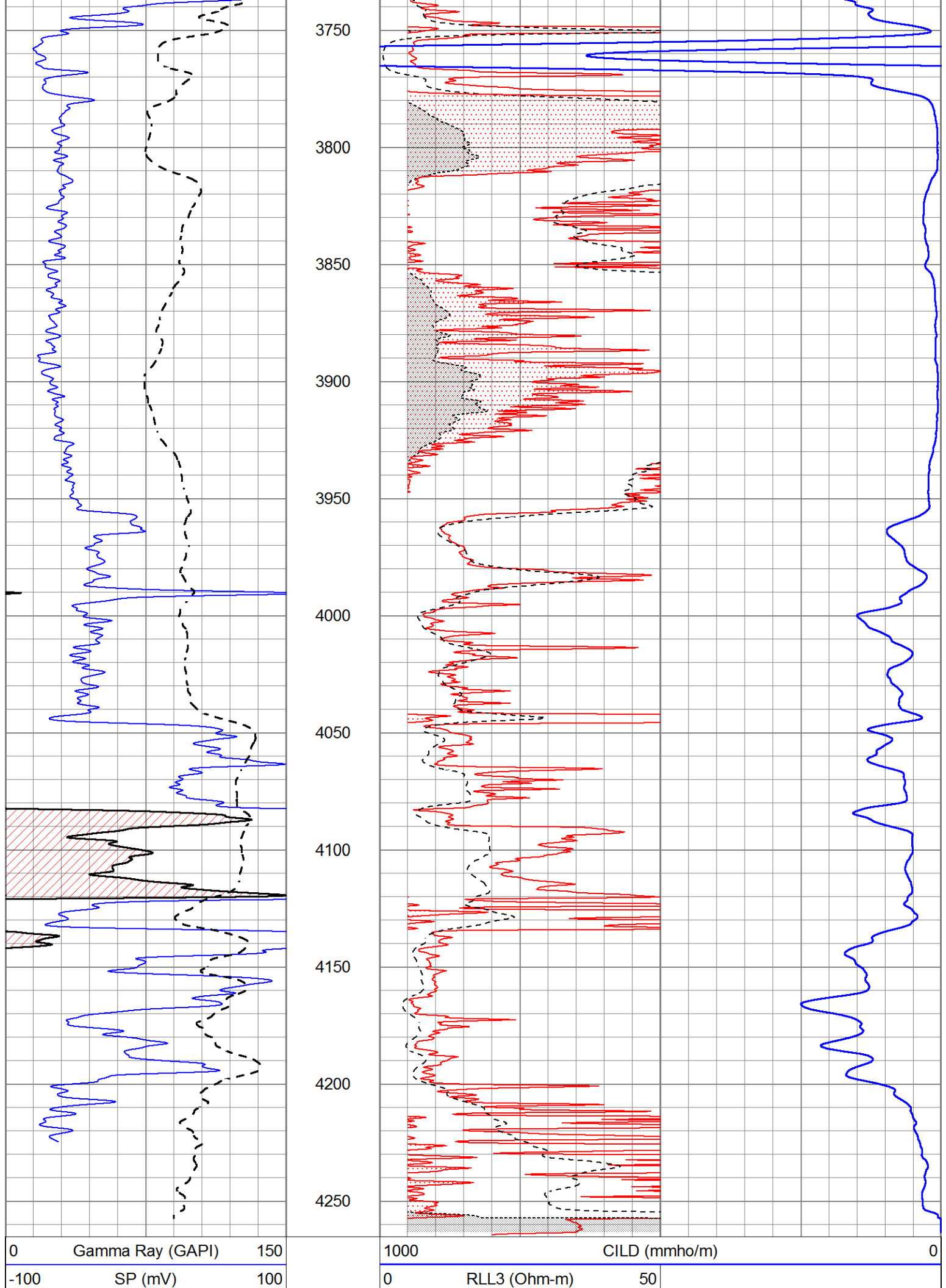
3550

3600

3650

3700





0	RILD (Ohm-m)	50
50	RILD X10 (Ohm-m)	500
50	RLL3 X10 (Ohm-m)	500

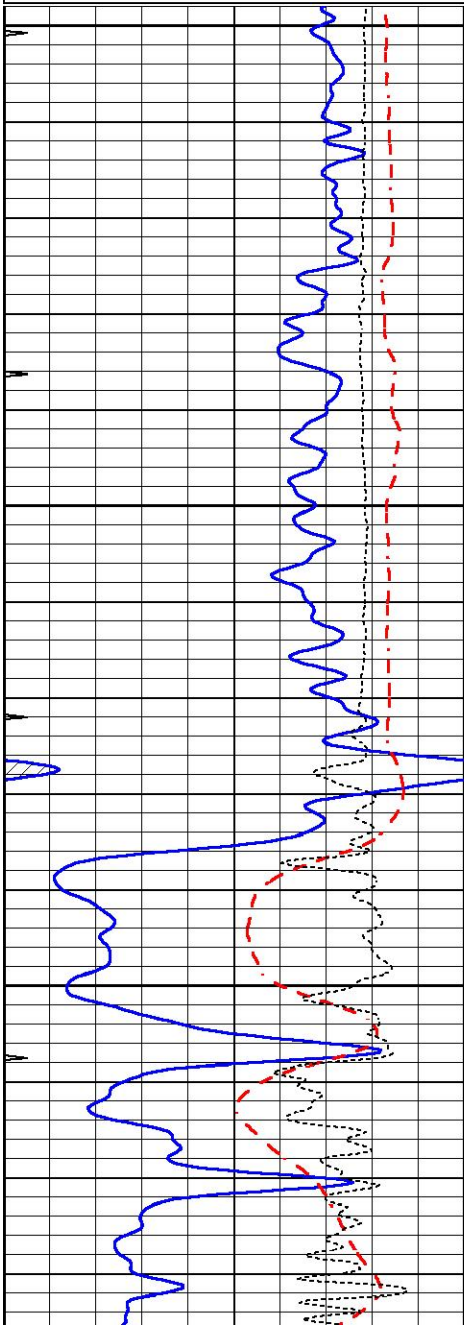


MAIN SECTION

Database File 6557pe.db
 Dataset Pathname pass3.1M
 Presentation Format _dil
 Dataset Creation Thu May 26 14:57:27 2022
 Charted by Depth in Feet scaled 1:240

0	GAMMA RAY (GAPI)	150
-100	SP (mV)	100
-250	Rxo/Rt	50
0	MINMK	20

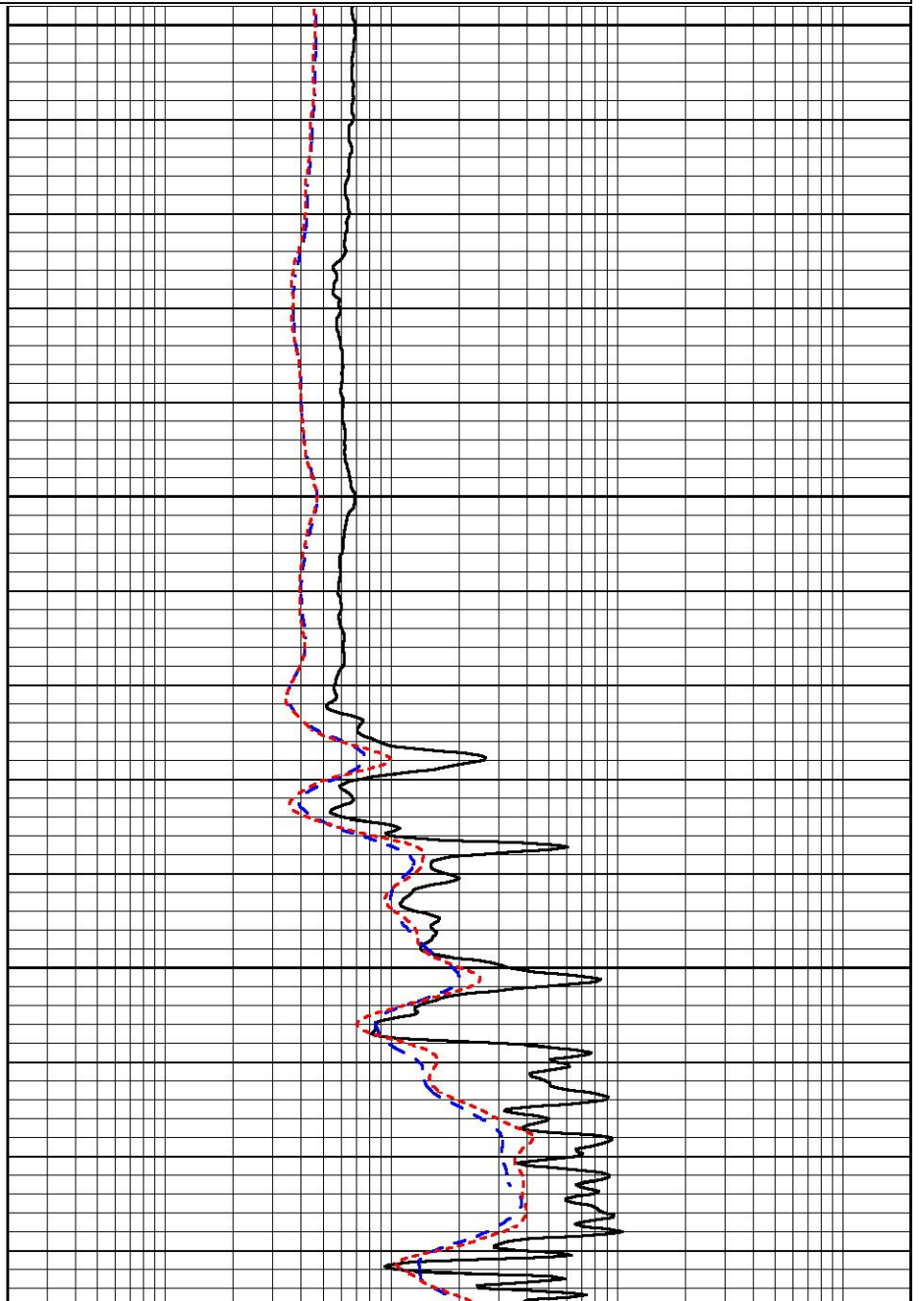
0.2	SHALLOW GUARD (Ohm-m)	2000
0.2	DEEP INDUCTION (Ohm-m)	2000
0.2	MEDIUM INDUCTION (Ohm-m)	2000

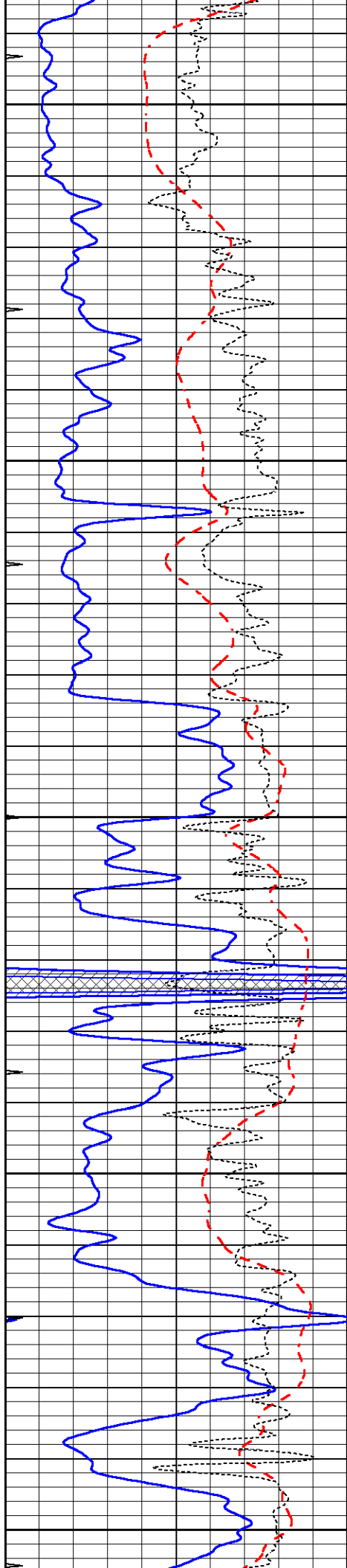


3000

3050

3100





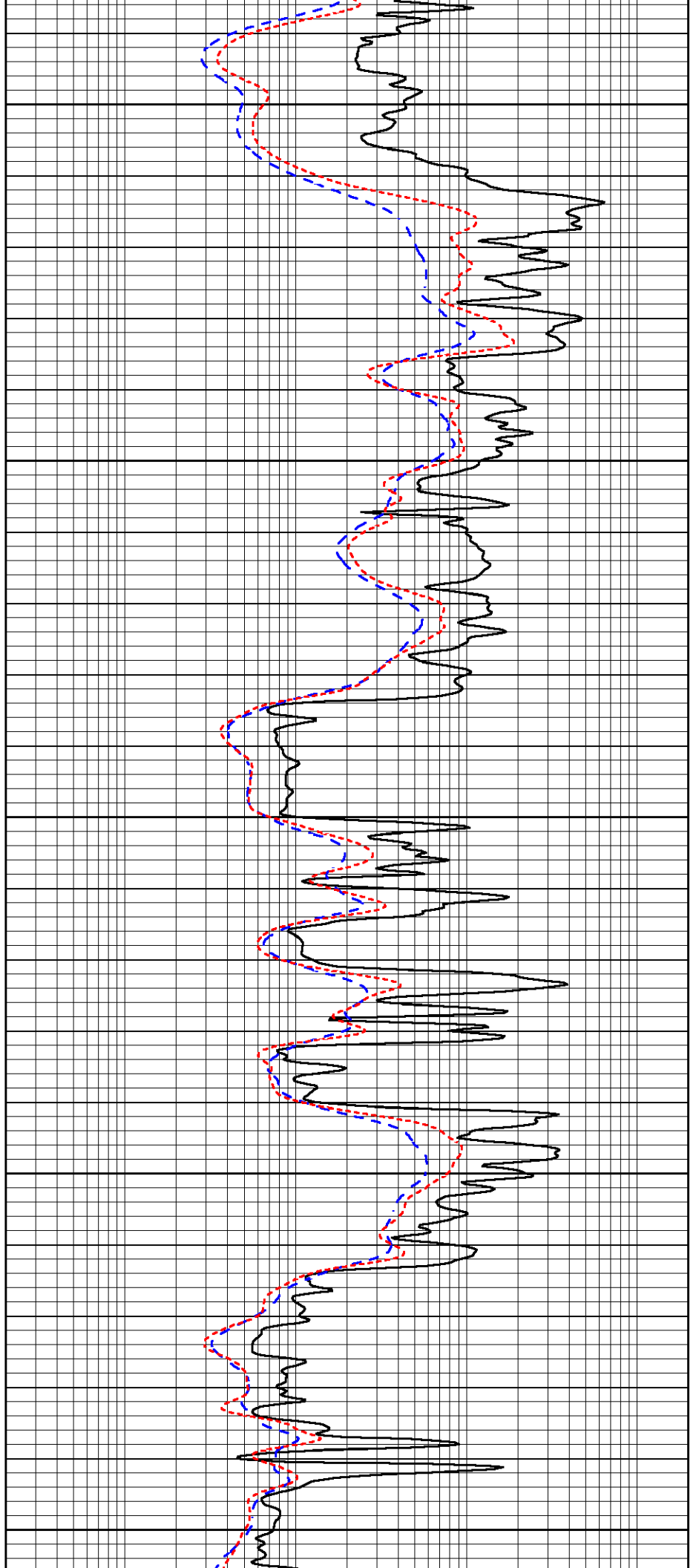
3150

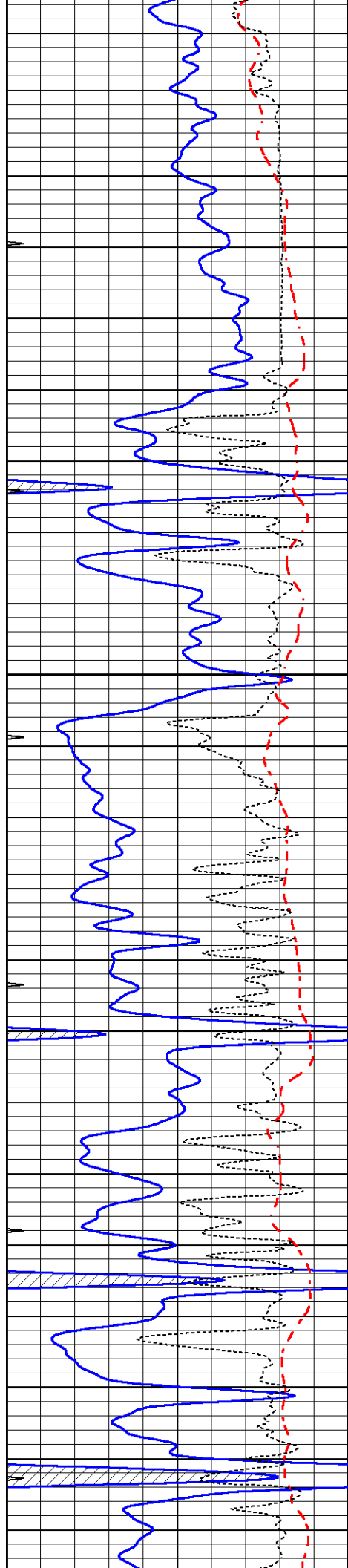
3200

3250

3300

3350



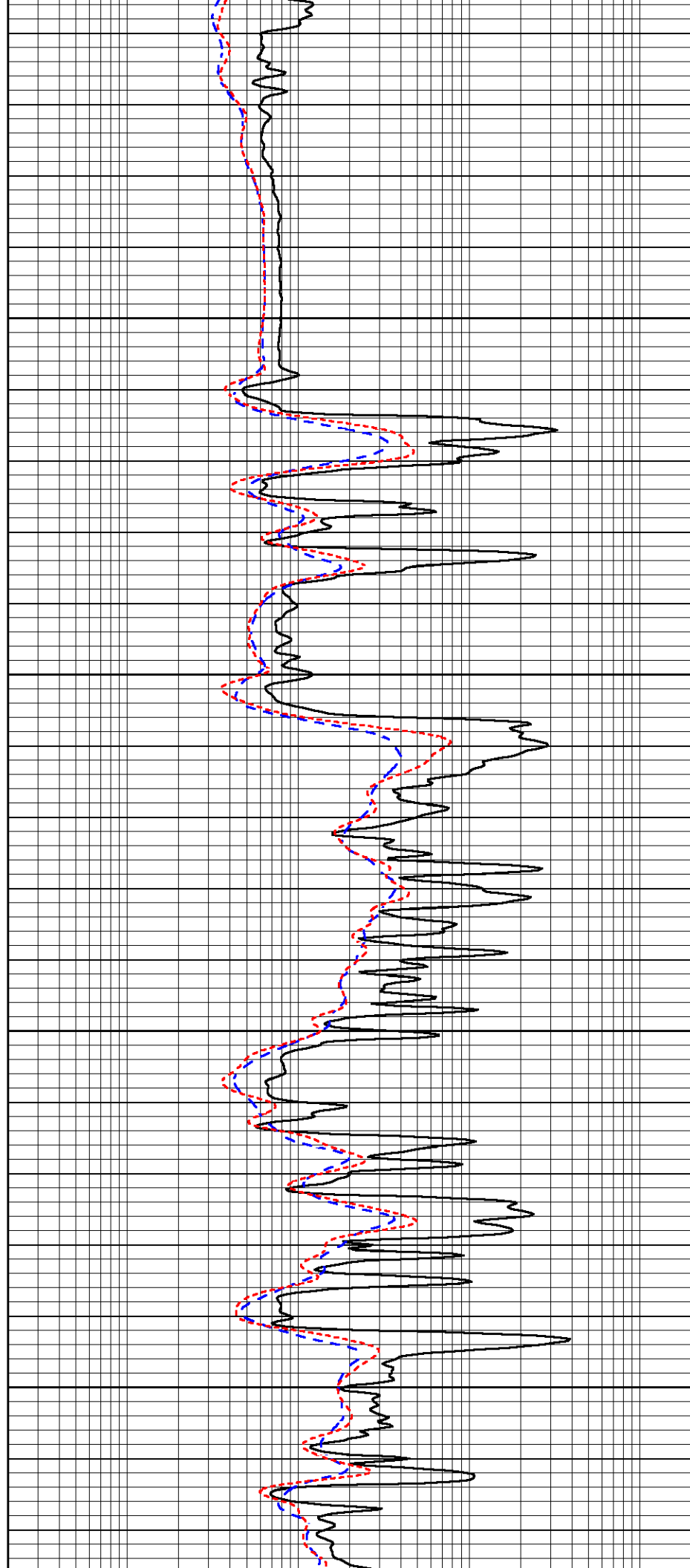


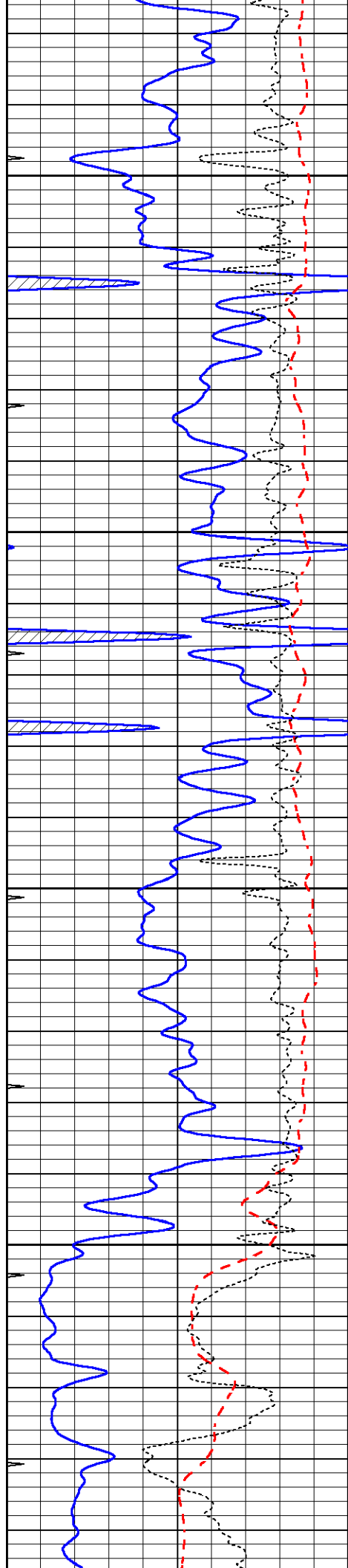
3400

3450

3500

3550



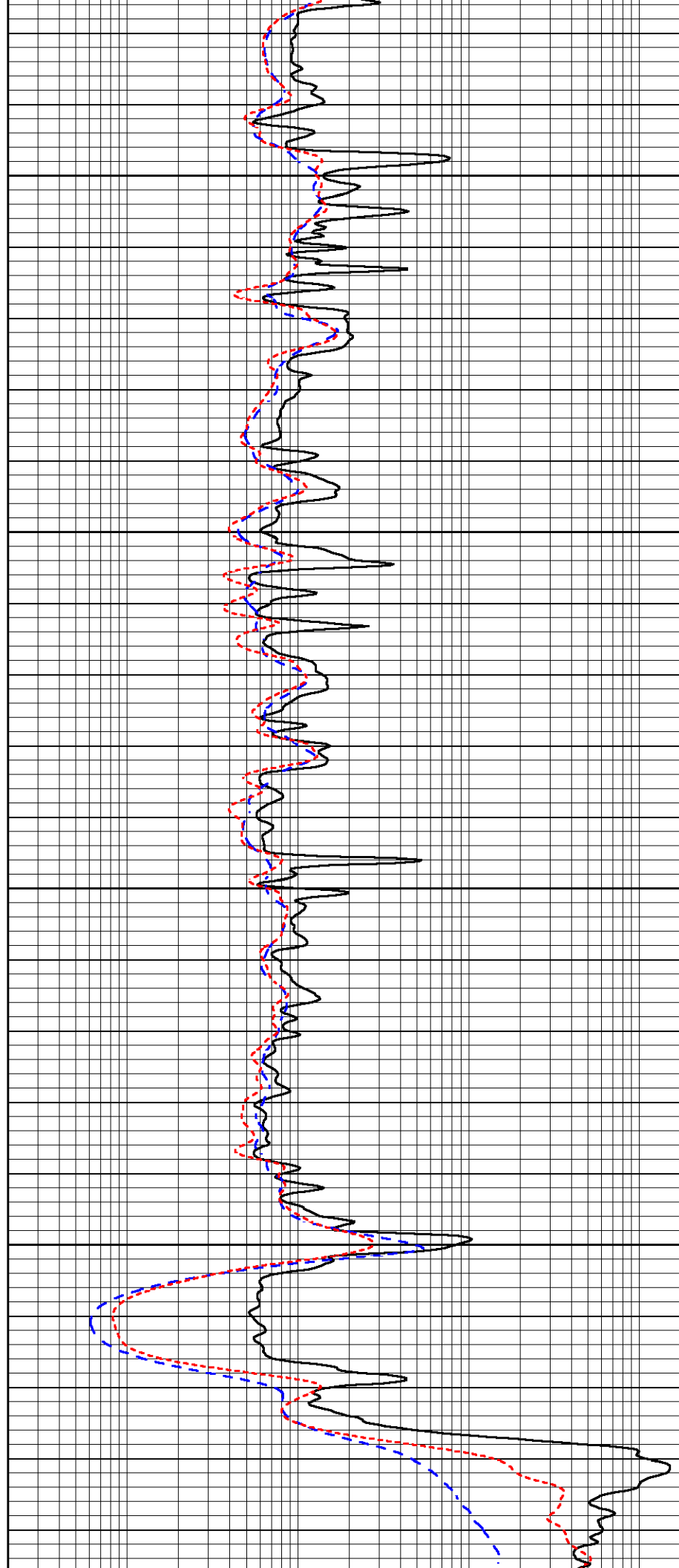


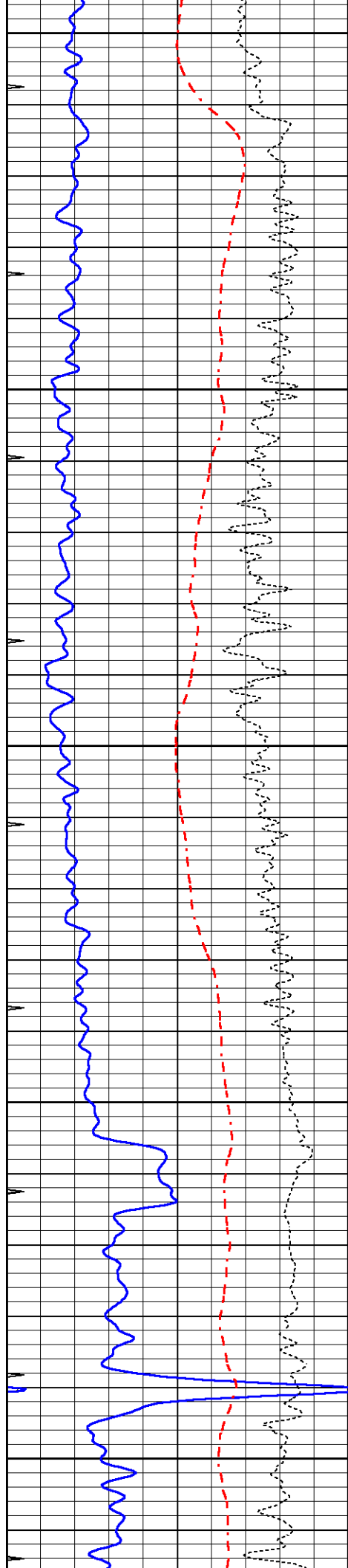
3600

3650

3700

3750





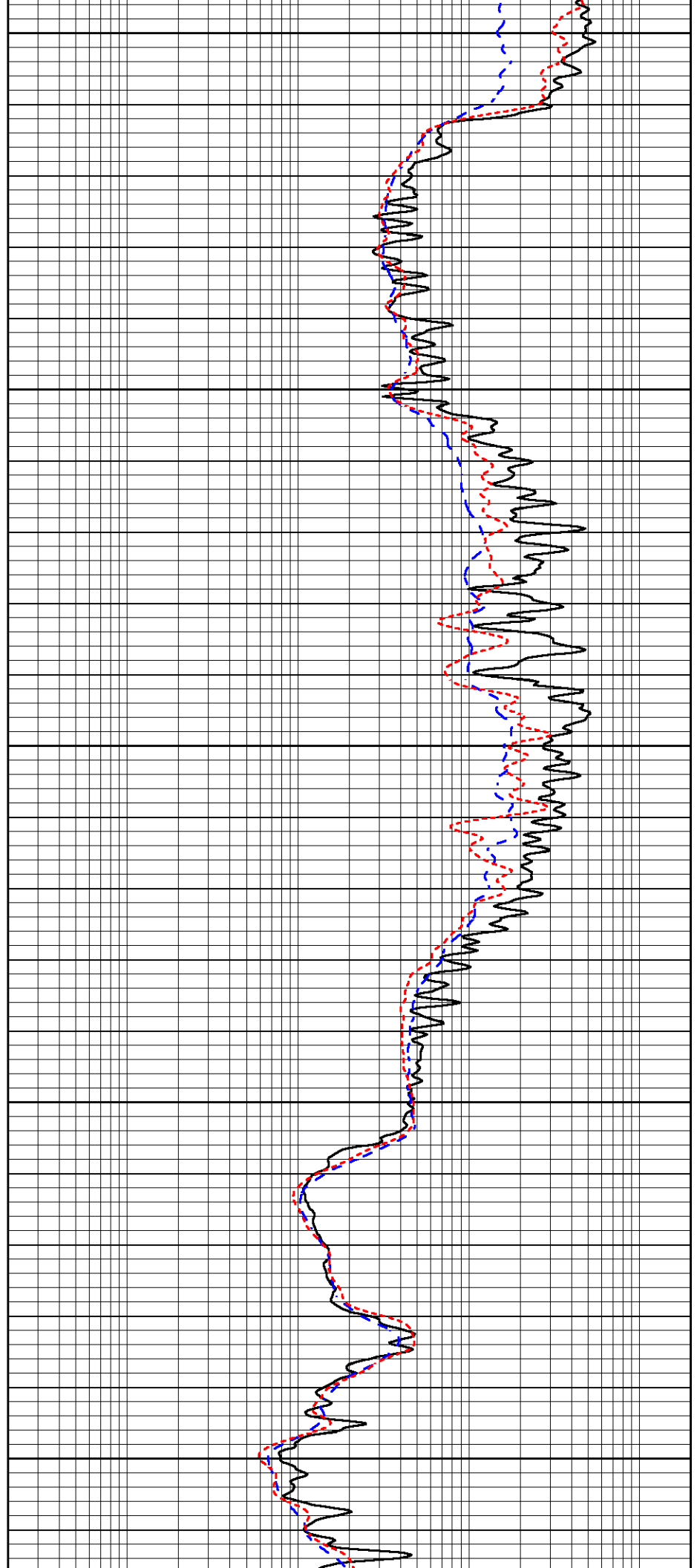
3800

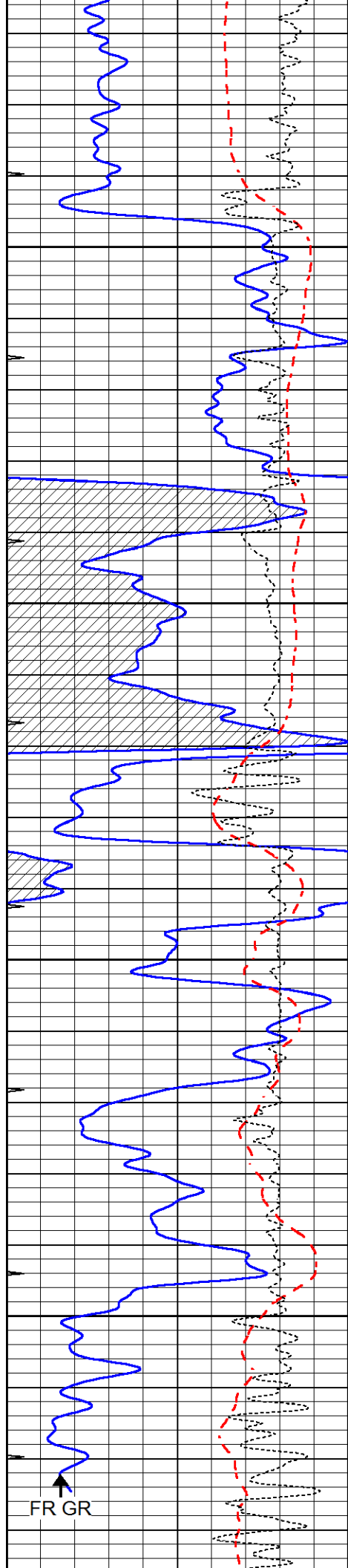
3850

3900

3950

4000





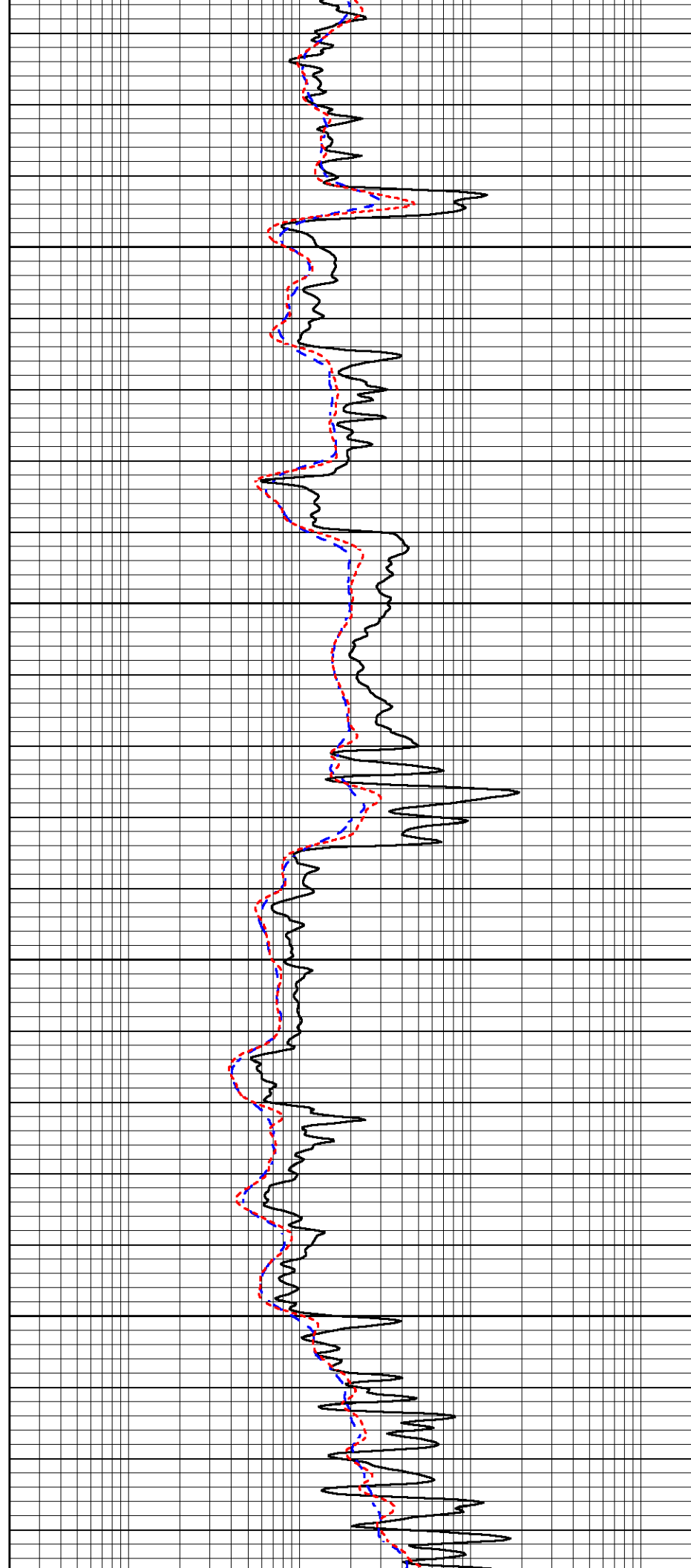
4050

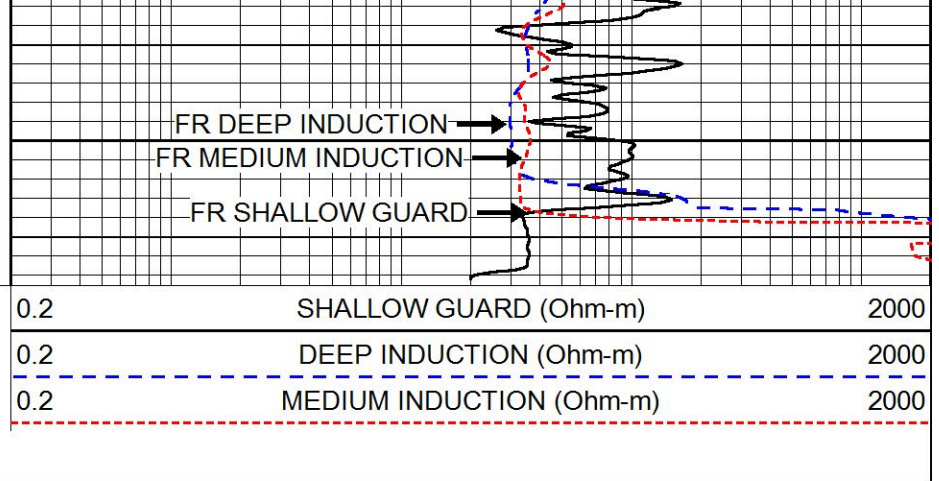
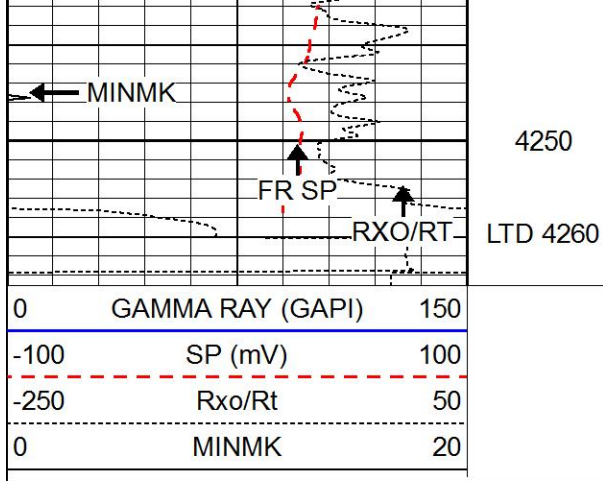
4100

4150

4200

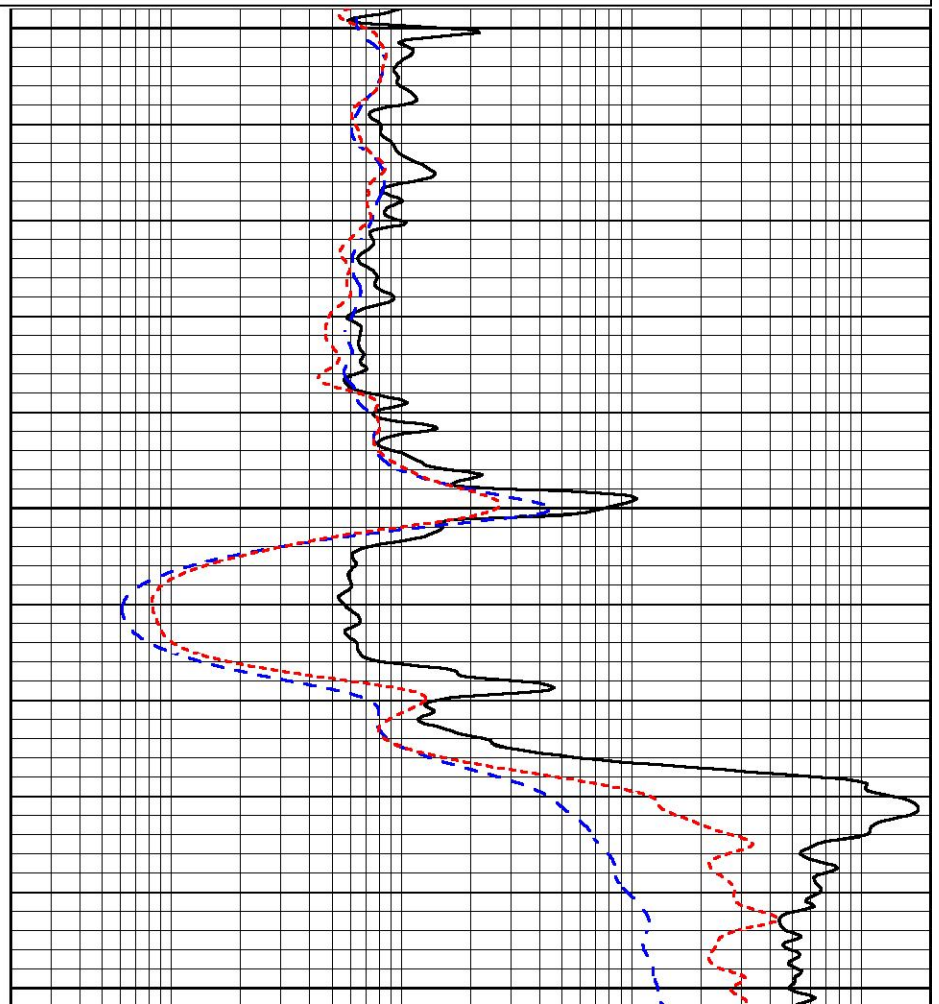
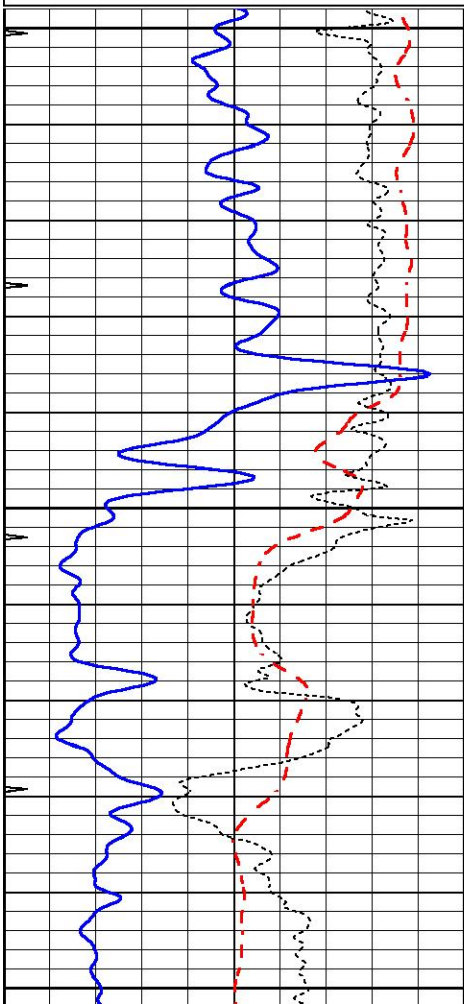
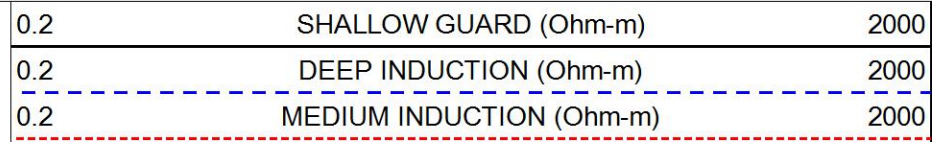
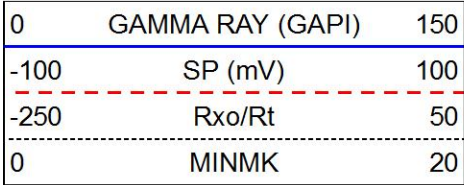
FR GR

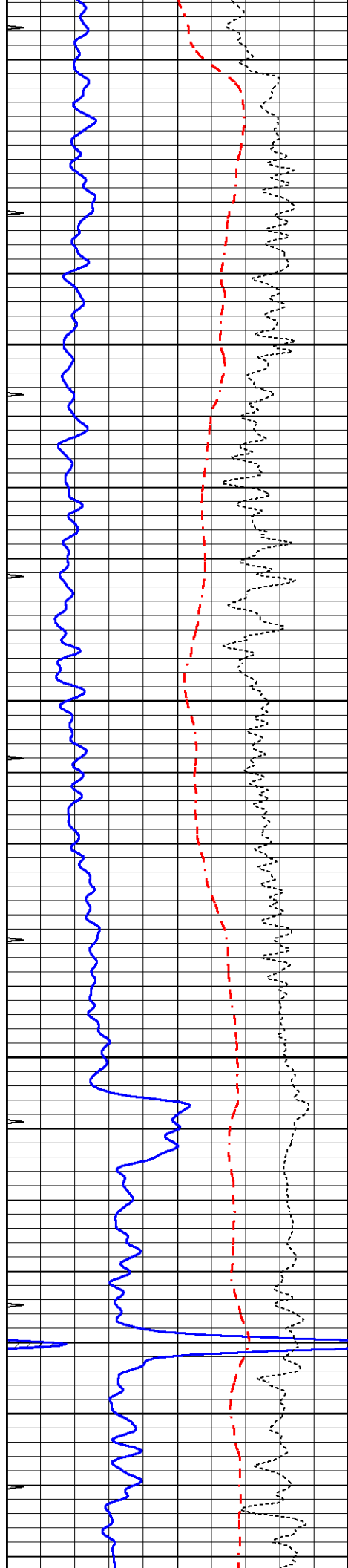




REPEAT SECTION

Database File 6557pe.db
 Dataset Pathname pass2.1R
 Presentation Format _dil
 Dataset Creation Thu May 26 14:11:11 2022
 Charted by Depth in Feet scaled 1:240



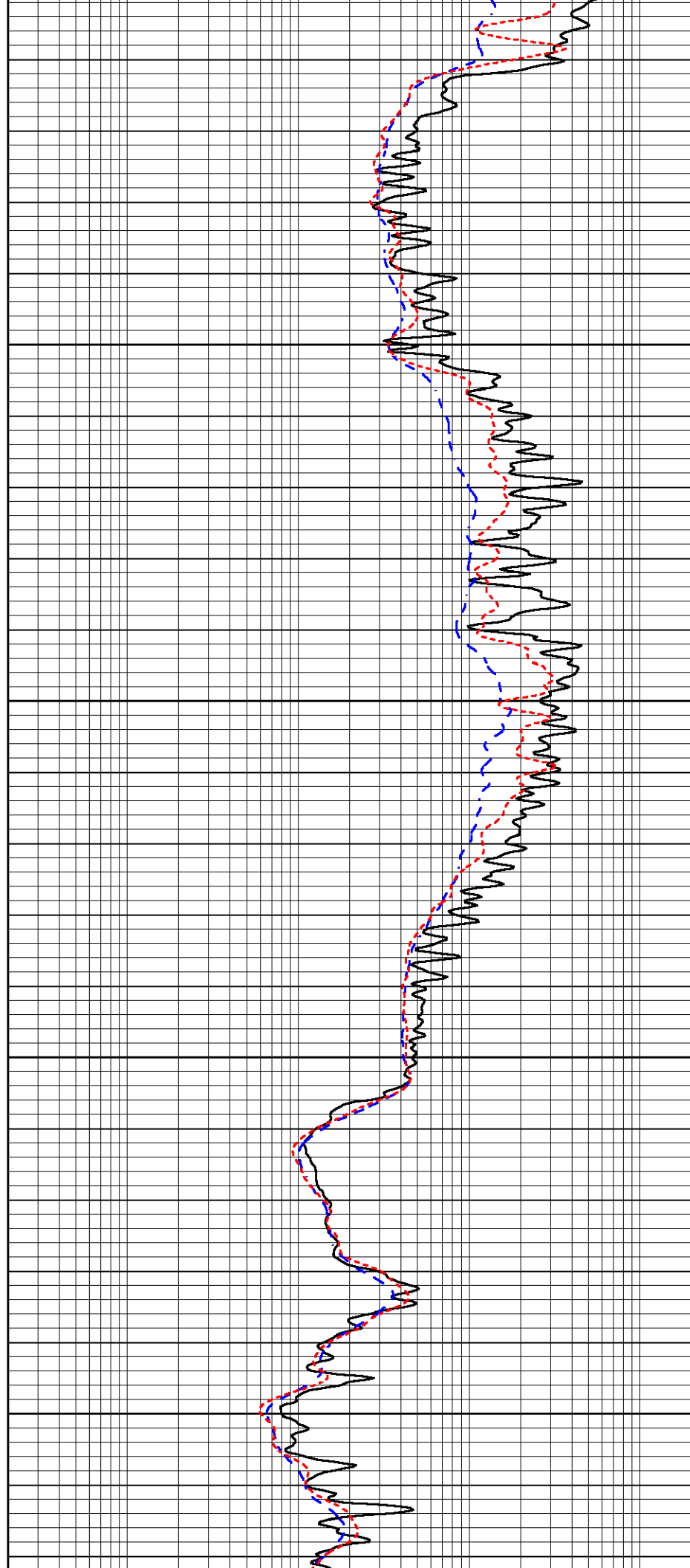


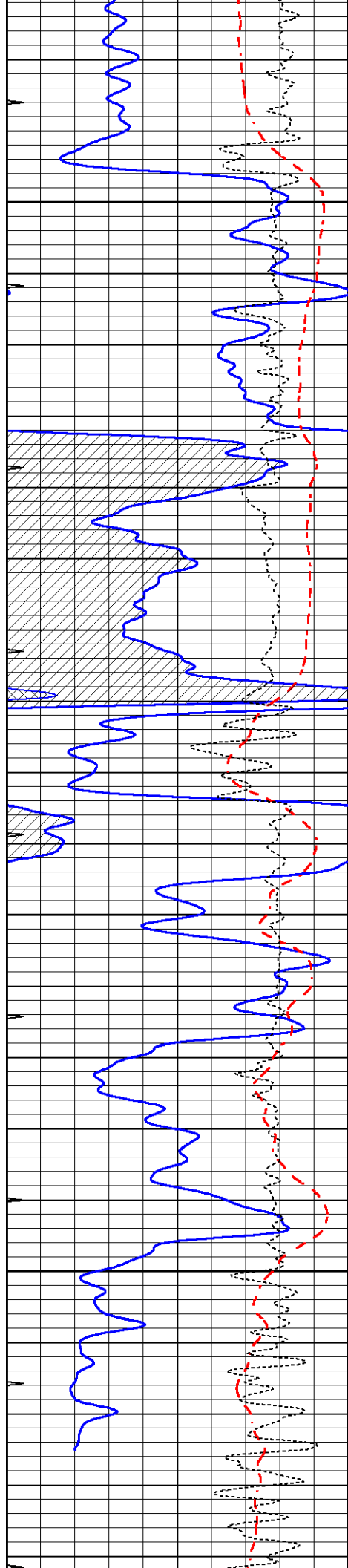
3850

3900

3950

4000



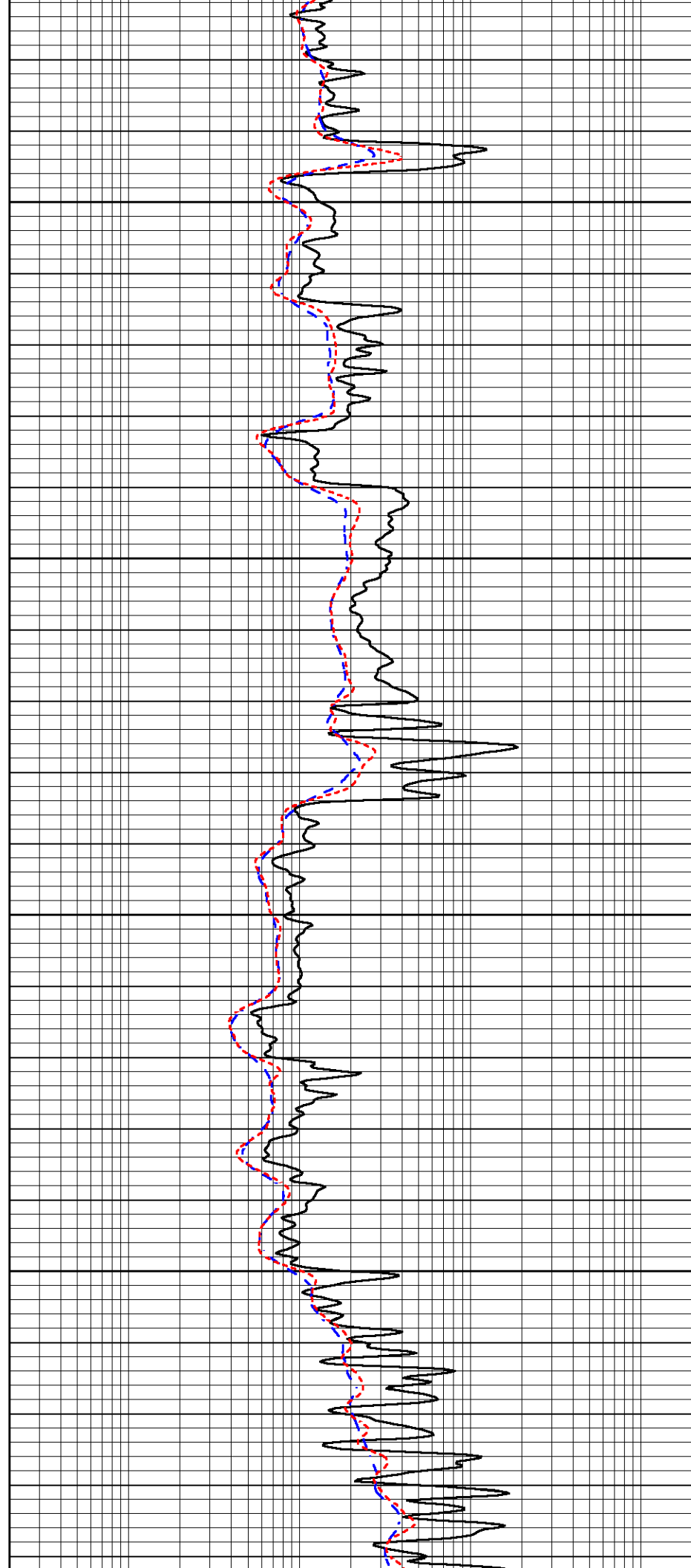


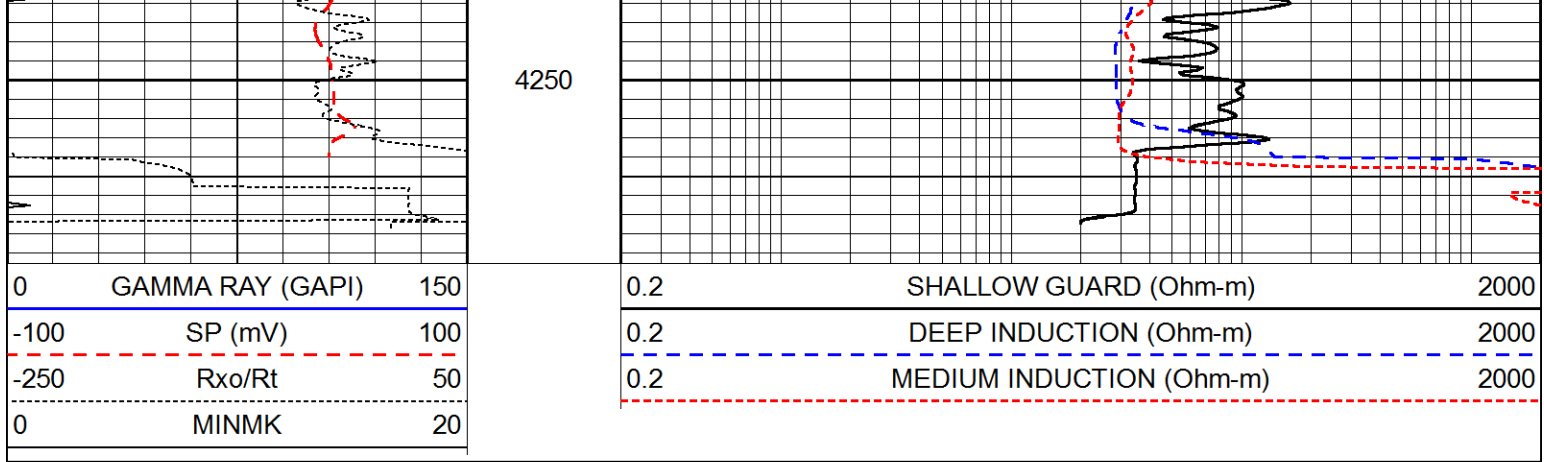
4050

4100

4150

4200





Calibration Report

Database File 6557pe.db
 Dataset Pathname pass3.1M
 Dataset Creation Thu May 26 14:57:27 2022

Dual Induction Calibration Report

Serial-Model: PROBE8-DILG
 Surface Cal Performed: Thu May 26 13:18:15 2022
 Downhole Cal Performed: Mon Sep 10 14:28:38 2018
 After Survey Verification Performed: Mon Sep 10 14:28:40 2018

Surface Calibration

Loop:	Readings				References			Results	
	Air	Loop			Air	Loop		m	b
Deep	0.015	0.648	V	0.000	400.000	mmho/m	600.000	4.000	
Medium	0.029	0.796	V	0.000	464.000	mmho/m	590.000	-9.000	
Internal:	Zero	Cal		Zero	Cal		m	b	
Deep	0.017	0.657	V	0.000	400.000	mmho/m	625.153	-10.619	
Medium	0.016	0.757	V	0.000	464.000	mmho/m	625.992	-9.739	

Downhole Calibration

	Readings				References			Results	
	Zero	Cal			Zero	Cal		m'	b'
Deep	0.000	0.000	mmho/m	2.011	405.777	mmho/m	1.000	0.000	
Medium	0.000	0.000	mmho/m	7.590	503.393	mmho/m	1.000	0.000	
LL3		7.500	V		1500.000	Ohm-m			
		0.000	V		20.000	Ohm-m			
		-7.200	V		3800.000	mmho-m			

After Survey Verification

	Readings				Targets			Results	
	Zero	Cal			Zero	Cal		m'	b'
Deep	0.000	0.000	mmho/m	0.000	0.000	mmho/m	0.000	0.000	
Medium	0.000	0.000	mmho/m	0.000	0.000	mmho/m	0.000	0.000	
LL3		1.000	Ohm-m		1.000	Ohm-m			
		0.000	Ohm-m		0.000	Ohm-m			
		1.000	mmho-m		1.000	mmho-m			

Litho Density Calibration Report
 Serial: 004 Model: PRB

	Background	Magnesium	Aluminum	Aluminum+Fe	
Window 1	1148.7	7216.0	2498.2	2291.5	cps
Window 2	1052.1	6193.6	2181.7	2034.2	cps
Window 3	896.0	3827.3	1530.0	1472.6	cps
Window 4	252.1	258.7	255.1	254.3	cps
Long Space	0.0	5141.5	1129.6	982.1	cps
Short Space	3.4	1390.2	903.9	792.3	cps
Rho		1.7100	2.5900	0.0000	g/cc
Pe		2.0000	2.7500	5.7900	
Rib Angle	: 44.1	Rib Slope	: 0.970	Density/Spine Ratio	: 0.559
Spine Angle	: 74.1	Spine Slope	: 3.520	Spine Intercept	: -16.9

Before Survey Verification

Performed Wed Dec 31 18:00:00 1969

	Background	Magnesium	Aluminum	Aluminum+Fe	
Window 1	0.0	0.0	0.0	0.0	cps
Window 2	0.0	0.0	0.0	0.0	cps
Window 3	0.0	0.0	0.0	0.0	cps
Window 4	0.0	0.0	0.0	0.0	cps
Long Space	0.0	0.0	0.0	0.0	cps
Short Space	0.0	0.0	0.0	0.0	cps
Measured Rho		0.0000	0.0000	0.0000	g/cc
Measured Correction		0.0000	0.0000	0.0000	g/cc
Measured Pe			0.0000	0.0000	

After Survey Verification

Performed Wed Dec 31 18:00:00 1969

	Background	Magnesium	Aluminum	Aluminum+Fe	
Window 1	0.0	0.0	0.0	0.0	cps
Window 2	0.0	0.0	0.0	0.0	cps
Window 3	0.0	0.0	0.0	0.0	cps
Window 4	0.0	0.0	0.0	0.0	cps
Long Space	0.0	0.0	0.0	0.0	cps
Short Space	0.0	0.0	0.0	0.0	cps
Measured Rho		0.0000	0.0000	0.0000	g/cc
Measured Correction		0.0000	0.0000	0.0000	g/cc
Measured Pe			0.0000	0.0000	

Compensated Neutron Calibration Report

Serial Number: 6I
Tool Model: G

CALIBRATION

Detector	Readings	Target	Normalization
Short Space	1.00 cps	1.00 cps	1.0000
Long Space	1.00 cps	1.00 cps	1.0000

PRE-SURVEY VERIFICATION

	Detector	Readings	Measured	Target
1)	Short Space	cps		
	Long Space	cps	pu	pu
2)	Short Space	cps		
	Long Space	cps	pu	

3)	Short Space	cps	
	Long Space	cps	pu

POST-SURVEY VERIFICATION

	Detector	Readings	Measured	Target
1)	Short Space	cps		
	Long Space	cps	pu	pu
2)	Short Space	cps		
	Long Space	cps	pu	pu
3)	Short Space	cps		
	Long Space	cps	pu	pu

Gamma Ray Calibration Report

Serial Number:	GR6	
Tool Model:	OPEN	
Performed:	Wed May 25 15:13:08 2022	
Calibrator Value:	150.0	GAPI
Background Reading:	0.0	cps
Calibrator Reading:	276.0	cps
Sensitivity:	0.8000	GAPI/cps