



**COMPENSATED
DENSITY/NEUTRON
PE LOG**

Company MccOY PETROLEUM CORPORATION
Well CARROLL "A" #1-6
Field UNNAMED
County SUMNER
State KANSAS

Company MccOY PETROLEUM CORPORATION
Well CARROLL "A" #1-6
Field UNNAMED
County SUMNER State KANSAS

Location: API #: 15-191-22847-0000
1542' FSL & 2198' FEL
SE - SW - NW - SE
SEC 6 TWP 33S RGE 1E
Permanent Datum GROUND LEVEL Elevation 1199
Log Measured From KELLY BUSHING 12' A.G.L.
Drilling Measured From KELLY BUSHING

Other Services
DILMEL
SONIC
Elevation
K.B. 1211
D.F. 1209
G.L. 1199

Date	5/26/22
Run Number	ONE
Depth Driller	4260
Depth Logger	4260
Bottom Logged Interval	4236
Top Log Interval	3000
Casing Driller	8 5/8"@252'
Casing Logger	264
Bit Size	7 7/8"
Type Fluid in Hole	CHEMICAL MUD
Density / Viscosity	9.4/57
pH / Fluid Loss	9.7/9.5
Source of Sample	FLOWLINE
Rm @ Meas. Temp	1.40@80F
Rmf @ Meas. Temp	1.05@80F
Rmc @ Meas. Temp	1.68@80F
Source of Rmf / Rmc	MEASURED
Rm @ BHT	.949@118F
Time Circulation Stopped	2.5 HOURS
Time Logger on Bottom	12:45 P.M.
Maximum Recorded Temperature	118F
Equipment Number	8916
Location	HAYS, KANSAS
Recorded By	JEFF LUEBBERS
Witnessed By	DAVE WILLIAMS

<<< Fold Here >>>

All interpretations are opinions based on inferences from electrical or other measurements and we cannot and do not guarantee the accuracy or correctness of any interpretation, and we shall not, except in the case of gross or willful negligence on our part, be liable or responsible for any loss, costs, damages, or expenses incurred or sustained by anyone resulting from any interpretation made by any of our officers, agents or employees. These interpretations are also subject to our general terms and conditions set out in our current Price Schedule.

Comments

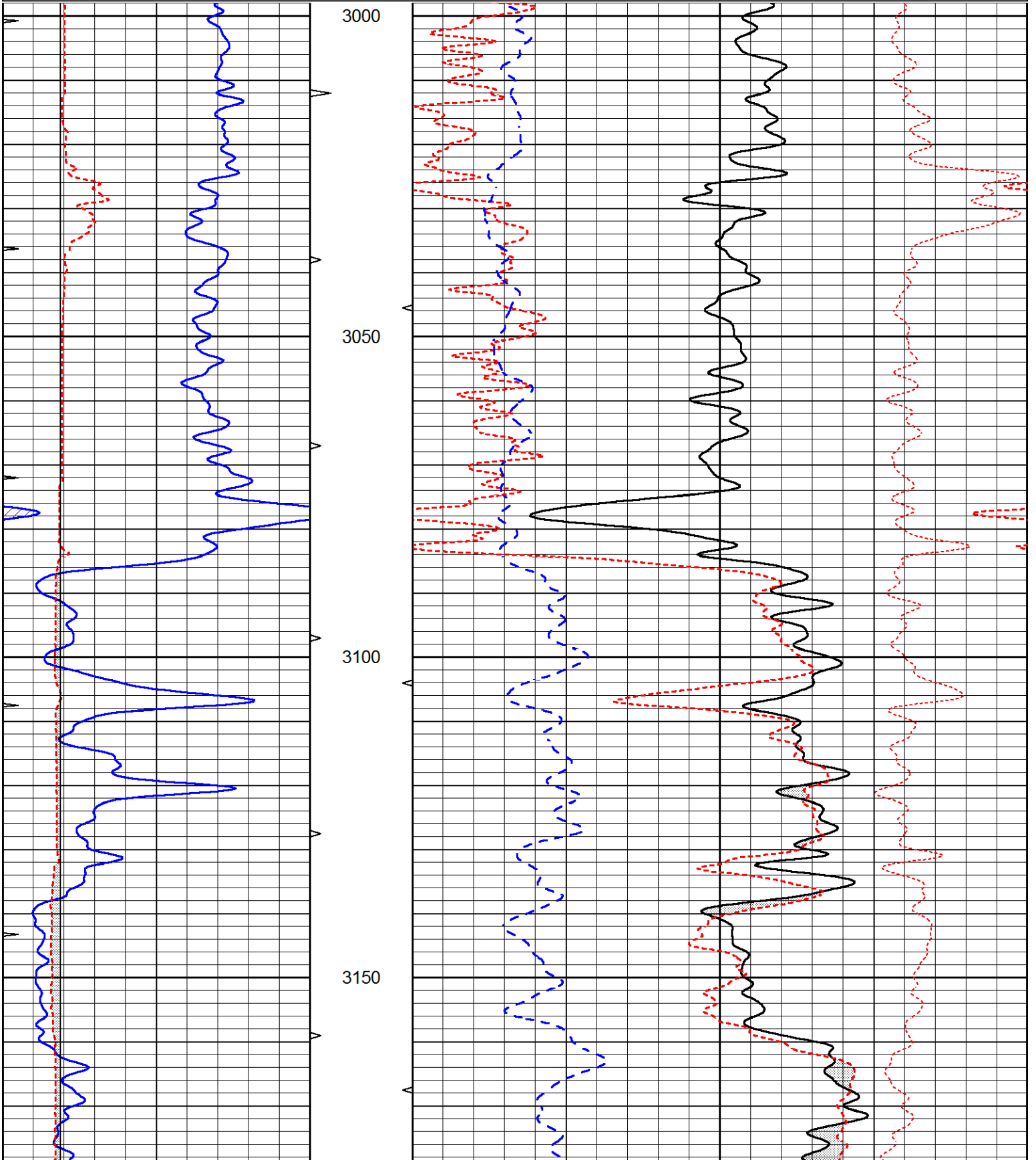
THANK YOU FOR USING ELI WIRELINE, HAYS, KS. (785) 628-6395
DIRECTIONS:
WELLINGTON, KS., (JUNCTION OF HWY 81 & 160) S. ON 81 TO "RD.60", 3E., 1/2N., W. INTO

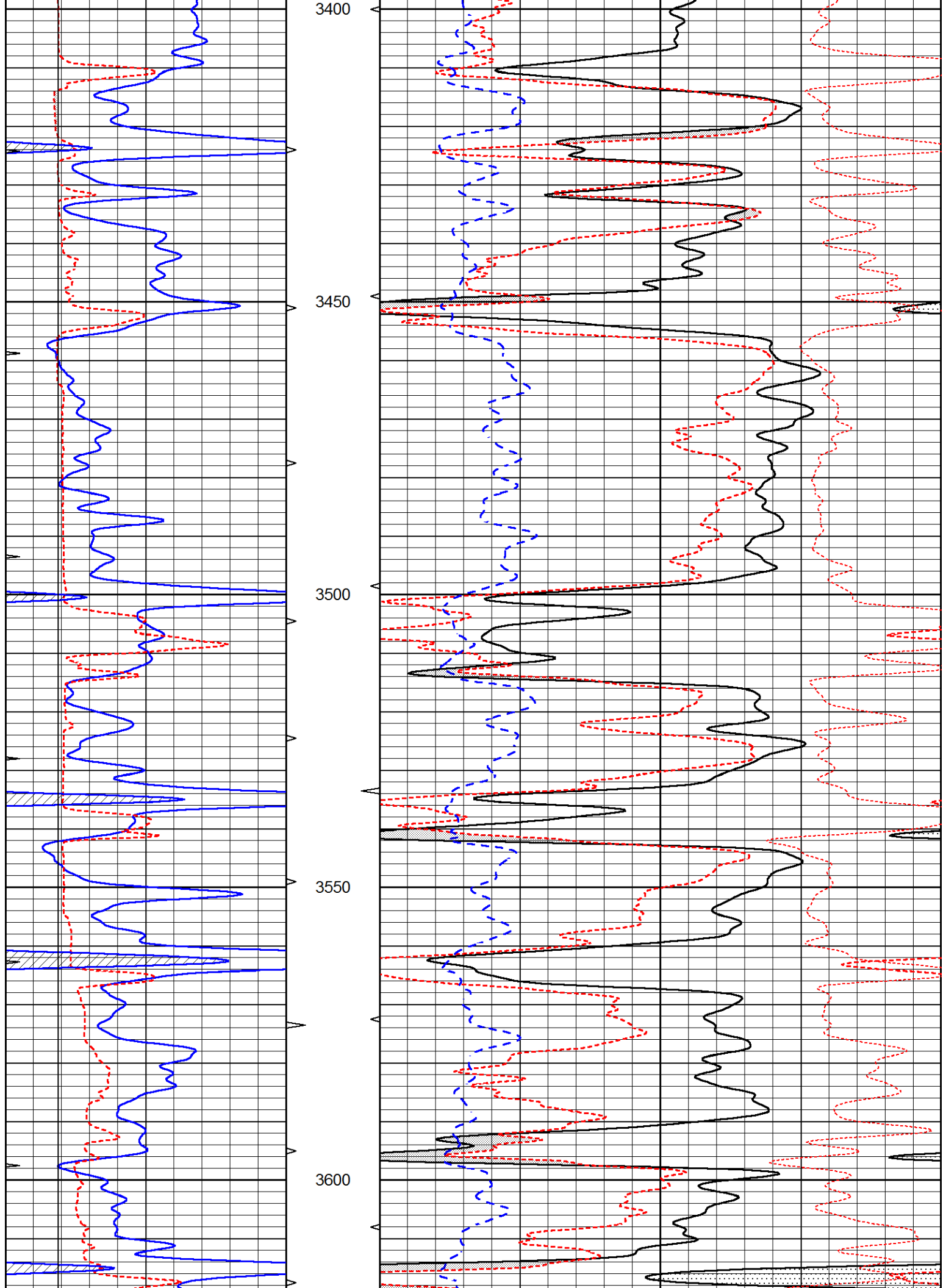


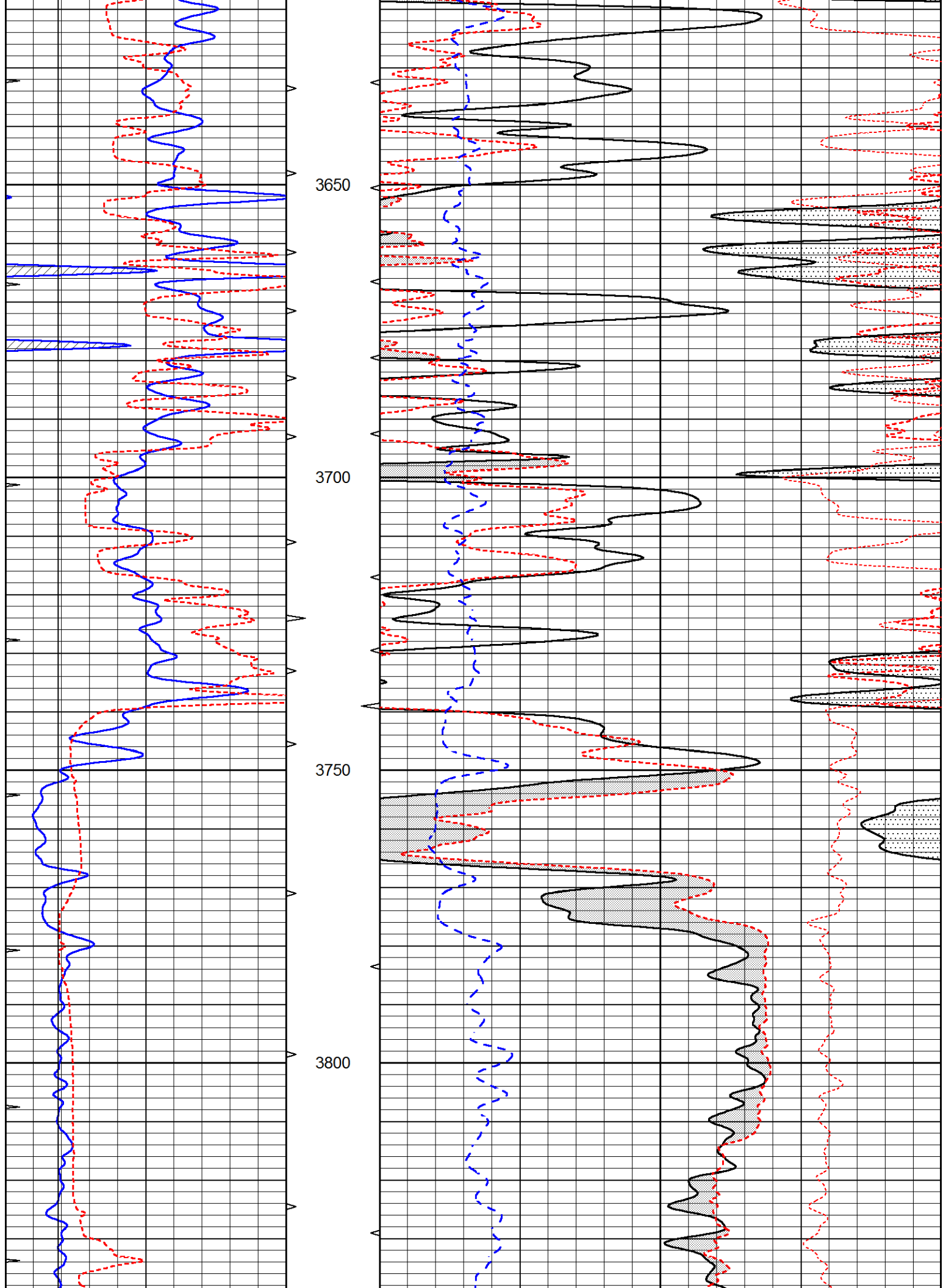
MAIN SECTION

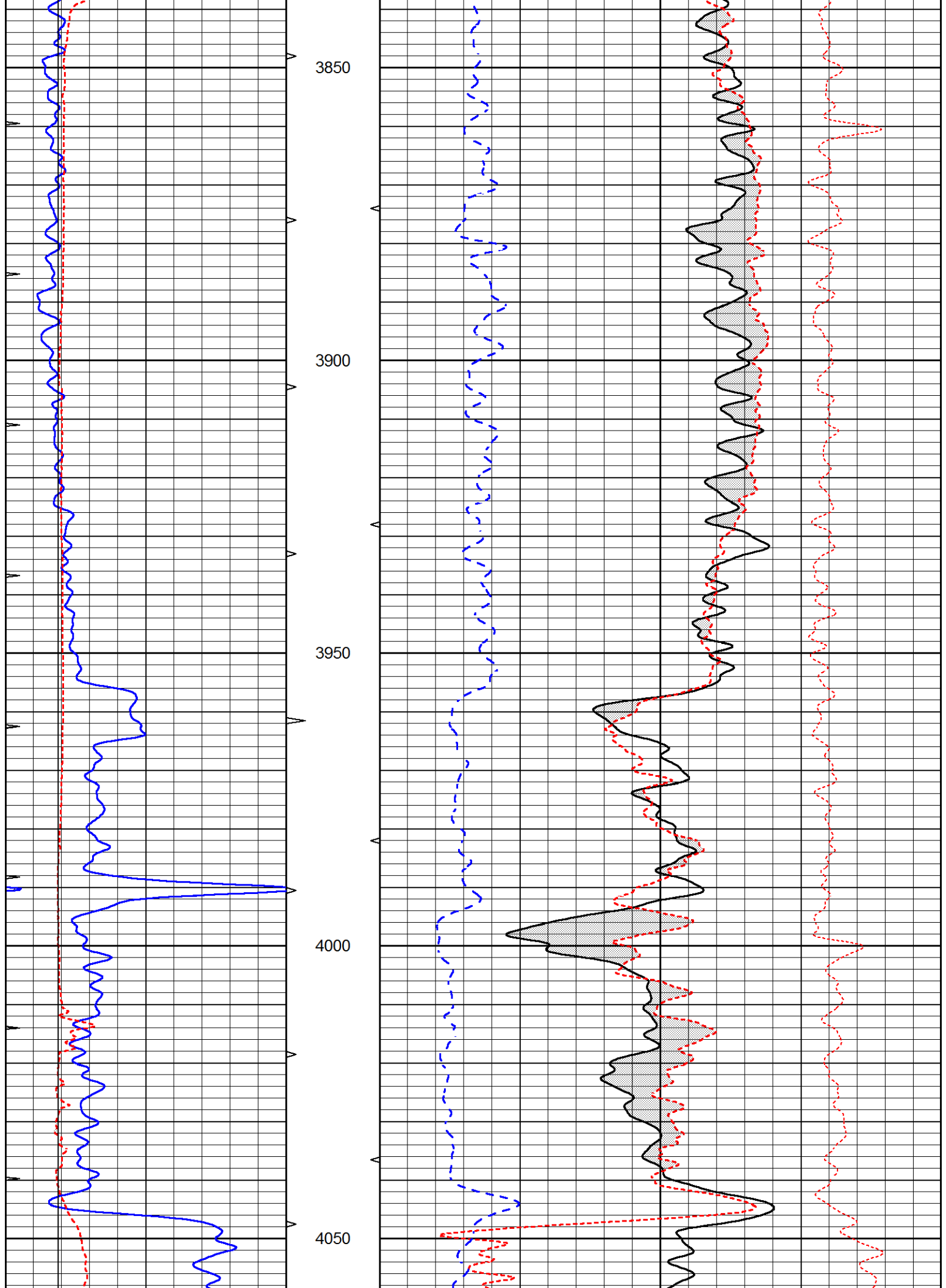
Database File 6557pe.db
 Dataset Pathname pass3.1M
 Presentation Format _ldt_neu
 Dataset Creation Thu May 26 14:57:27 2022
 Charted by Depth in Feet scaled 1:240

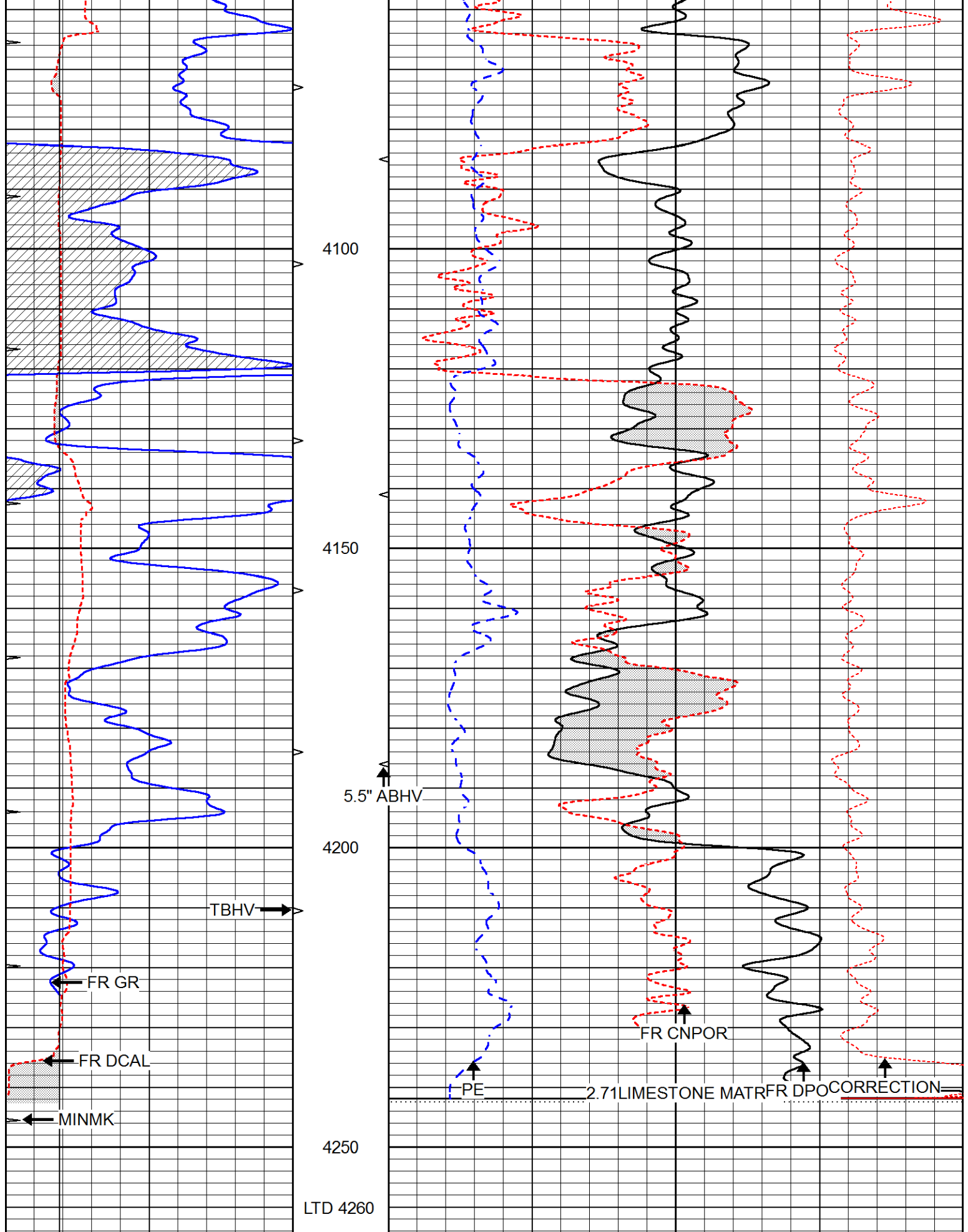
0	GAMMA RAY (GAPI)	150	ABHV	30	COMPENSATED DENSITY (pu)		-10
6	CALIPER (in)	16	10 (ft3)	0	COMPENSATED NEUTRON (pu)		-10
0	MINMK	20	TBHV	0	PE	10	-0.25
			0 (ft3)	10			CORRECTION (g/cc) 0.25











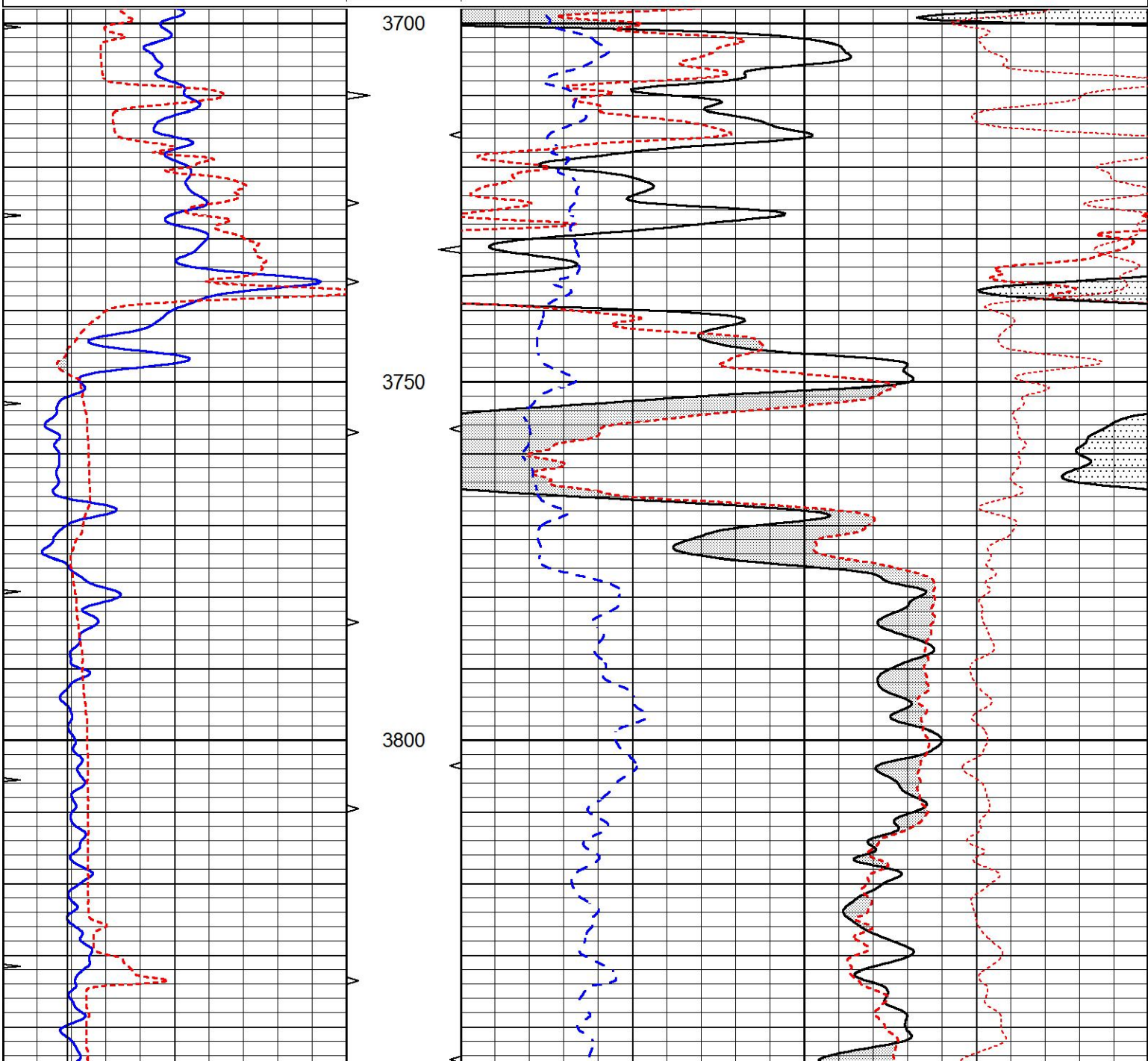
0	GAMMA RAY (GAPI)	150	ABHV	30	COMPENSATED DENSITY (pu)	-10
6	CALIPER (in)	16	10 (ft3)	0 30	COMPENSATED NEUTRON (pu)	-10
0	MINMK	20	TBHV	0	PE	10 -0.25
					CORRECTION (g/cc)	0.25

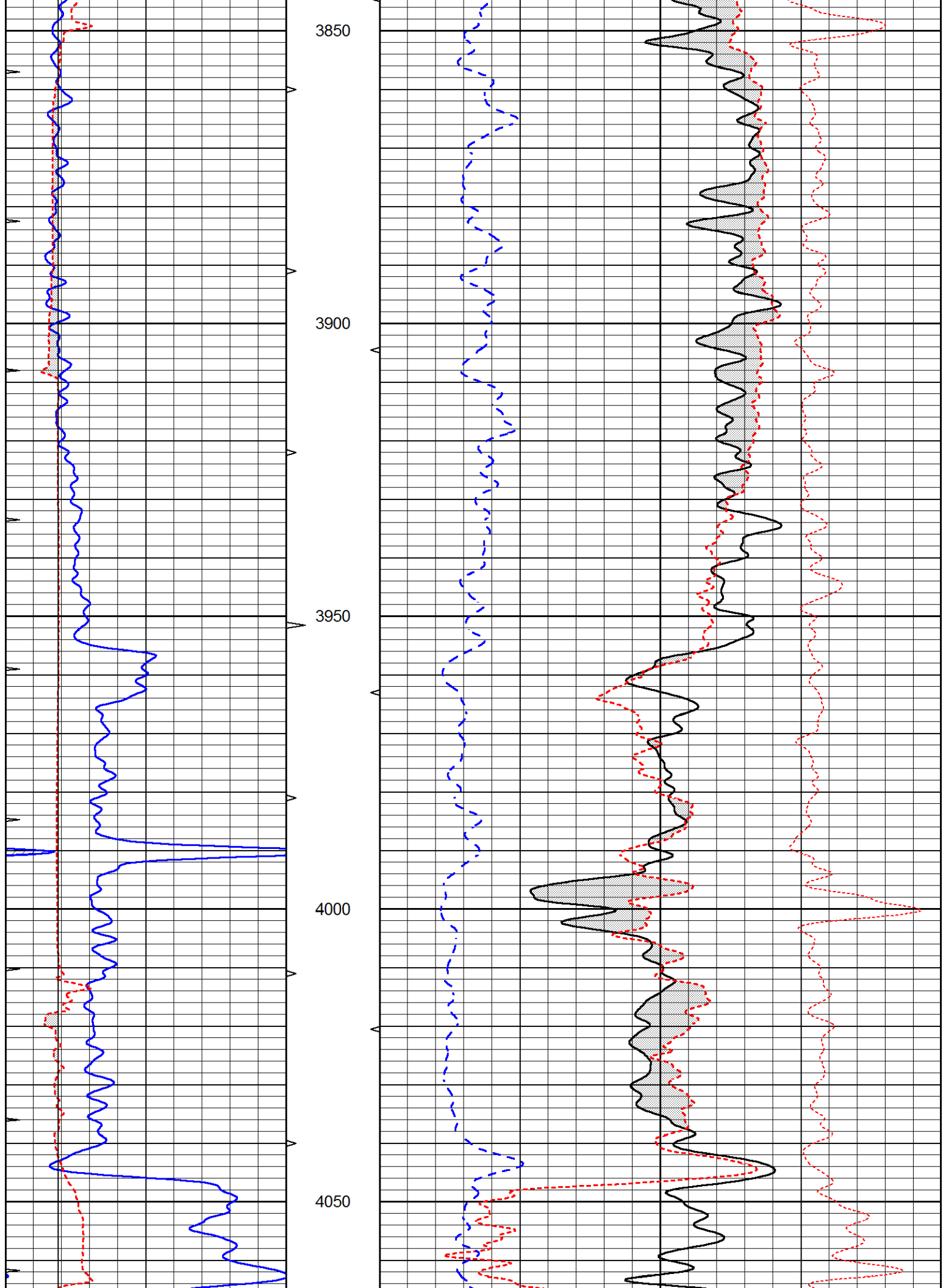


REPEAT SECTION

Database File 6557pe.db
 Dataset Pathname pass2.1R
 Presentation Format _ldt_neu
 Dataset Creation Thu May 26 14:11:11 2022
 Charted by Depth in Feet scaled 1:240

0	GAMMA RAY (GAPI)	150	ABHV	30	COMPENSATED DENSITY (pu)	-10		
6	CALIPER (in)	16	10 (ft3)	0	30	COMPENSATED NEUTRON (pu)	-10	
0	MINMK	20	TBHV	0	PE	10 -0.25	CORRECTION (g/cc)	0.25
			0 (ft3)	10				





Calibration Report

Database File 6557pe.db
 Dataset Pathname pass3.1M
 Dataset Creation Thu May 26 14:57:27 2022

Dual Induction Calibration Report

Serial-Model: PROBE8-DILG
 Surface Cal Performed: Thu May 26 13:18:15 2022
 Downhole Cal Performed: Mon Sep 10 14:28:38 2018
 After Survey Verification Performed: Mon Sep 10 14:28:40 2018

Surface Calibration

Loop:	Readings			References			Results	
	Air	Loop		Air	Loop		m	b
Deep	0.015	0.648	V	0.000	400.000	mmho/m	600.000	4.000
Medium	0.029	0.796	V	0.000	464.000	mmho/m	590.000	-9.000
Internal:	Zero	Cal		Zero	Cal		m	b
Deep	0.017	0.657	V	0.000	400.000	mmho/m	625.153	-10.619
Medium	0.016	0.757	V	0.000	464.000	mmho/m	625.992	-9.739

Downhole Calibration

	Readings			References			Results	
	Zero	Cal		Zero	Cal		m'	b'
Deep	0.000	0.000	mmho/m	2.011	405.777	mmho/m	1.000	0.000
Medium	0.000	0.000	mmho/m	7.590	503.393	mmho/m	1.000	0.000
LL3		7.500	V		1500.000	Ohm-m		
		0.000	V		20.000	Ohm-m		
		-7.200	V		3800.000	mmho-m		

After Survey Verification

	Readings			Targets			Results	
	Zero	Cal		Zero	Cal		m'	b'
Deep	0.000	0.000	mmho/m	0.000	0.000	mmho/m	0.000	0.000
Medium	0.000	0.000	mmho/m	0.000	0.000	mmho/m	0.000	0.000
LL3		1.000	Ohm-m		1.000	Ohm-m		
		0.000	Ohm-m		0.000	Ohm-m		
		1.000	mmho-m		1.000	mmho-m		

Litho Density Calibration Report

Serial: 004 Model: PRB

Master Calibration

Performed Mon May 23 11:44:16 2022

	Background	Magnesium	Aluminum	Aluminum+Fe	
Window 1	1148.7	7216.0	2498.2	2291.5	cps
Window 2	1052.1	6193.6	2181.7	2034.2	cps
Window 3	896.0	3827.3	1530.0	1472.6	cps
Window 4	252.1	258.7	255.1	254.3	cps
Long Space	0.0	5141.5	1129.6	982.1	cps
Short Space	3.4	1390.2	903.9	792.3	cps
Rho		1.7100	2.5900	0.0000	g/cc
Pe		2.0000	2.7500	5.7900	

Rib Angle : 44.1 Rib Slope : 0.970 Density/Spine Ratio : 0.559
 Spine Angle : 74.1 Spine Slope : 3.520 Spine Intercept : -16.9

Before Survey Verification

Performed Wed Dec 31 18:00:00 1969

Window 1	0.0	0.0	0.0	0.0	cps
Window 2	0.0	0.0	0.0	0.0	cps
Window 3	0.0	0.0	0.0	0.0	cps
Window 4	0.0	0.0	0.0	0.0	cps
Long Space	0.0	0.0	0.0	0.0	cps
Short Space	0.0	0.0	0.0	0.0	cps
Measured Rho		0.0000	0.0000	0.0000	g/cc
Measured Correction		0.0000	0.0000	0.0000	g/cc
Measured Pe			0.0000	0.0000	

After Survey Verification

Performed Wed Dec 31 18:00:00 1969

Window 1	0.0	0.0	0.0	0.0	cps
Window 2	0.0	0.0	0.0	0.0	cps
Window 3	0.0	0.0	0.0	0.0	cps
Window 4	0.0	0.0	0.0	0.0	cps
Long Space	0.0	0.0	0.0	0.0	cps
Short Space	0.0	0.0	0.0	0.0	cps
Measured Rho		0.0000	0.0000	0.0000	g/cc
Measured Correction		0.0000	0.0000	0.0000	g/cc
Measured Pe			0.0000	0.0000	

Compensated Neutron Calibration Report

Serial Number: 6I
Tool Model: G

CALIBRATION

Detector	Readings	Target	Normalization
Short Space	1.00 cps	1.00 cps	1.0000
Long Space	1.00 cps	1.00 cps	1.0000

PRE-SURVEY VERIFICATION

	Detector	Readings	Measured	Target
1)	Short Space	cps		
	Long Space	cps	pu	pu
2)	Short Space	cps		
	Long Space	cps	pu	
3)	Short Space	cps		
	Long Space	cps	pu	

POST-SURVEY VERIFICATION

	Detector	Readings	Measured	Target
1)	Short Space	cps		
	Long Space	cps	pu	pu
2)	Short Space	cps		
	Long Space	cps	pu	pu
3)	Short Space	cps		
	Long Space	cps	pu	

5)

Short Space
Long Space

cps
cps

pu
pu

pu
pu

Gamma Ray Calibration Report

Serial Number:	GR6	
Tool Model:	OPEN	
Performed:	Wed May 25 15:13:08 2022	
Calibrator Value:	150.0	GAPI
Background Reading:	0.0	cps
Calibrator Reading:	276.0	cps
Sensitivity:	0.8000	GAPI/cps