

Company PALOMINO PETROLEUM, INC.
Well SPACEMAN #1
Field ALDRICH NORTHEAST
County NESS
State KANSAS

Company PALOMINO PETROLEUM, INC.
Well SPACEMAN #1
Field ALDRICH NORTHEAST
County NESS State KANSAS

Location: API # : 15-135-26181-0000 Other Services
SEC 26 TWP 17S RGE 25W
1345' FNL & 910' FWL
NW - NE - SW - NW
Permanent Datum GROUND LEVEL Elevation 2523'
Log Measured From KELLY BUSHING 5' A.G.L.
Drilling Measured From KELLY BUSHING Elevation 2528'
G.L. 2523'

Date JULY 15, 2022

Run Number ONE
Depth Driller 4548'
Depth Logger 4487'
Bottom Logged Interval 4486' 1875'
Top Log Interval 2350' 100'
Open Hole Size ///
Type Fluid WATER
Density / Viscosity ///
Max. Recorded Temp. 121F
Estimated Cement Top 2440'
Time Well Ready ///
Time Logger on Bottom ///
Equipment Number PT-09
Location HAYS
Recorded By BOB KLAUS
Witnessed By DALTON POPP

| Borehole Record | | Tubing Record | | | | | |
|-----------------|--------|---------------|-------|------|--------|------|----|
| Run Number | Bit | From | To | Size | Weight | From | To |
| ONE | 12.25" | 0 | 219' | 219' | | | |
| TWO | 7.875" | 219' | 4548' | | | | |

| Casing Record | | Surface String | | Production String | |
|-------------------|--------|----------------|-----|-------------------|--|
| Record | Size | Wgt/Ft | Top | Bottom | |
| Surface String | 8 5/8" | | 0 | 219' | |
| Production String | 5 1/2" | | 0 | | |
| Liner | | | | | |

<<< Fold Here >>>

All interpretations are opinions based on inferences from electrical or other measurements and we cannot and do not guarantee the accuracy or correctness of any interpretation, and we shall not, except in the case of gross or willful negligence on our part, be liable or responsible for any loss, costs, damages, or expenses incurred or sustained by anyone resulting from any interpretation made by any of our officers, agents or employees. These interpretations are also subject to our general terms and conditions set out in our current Price Schedule.

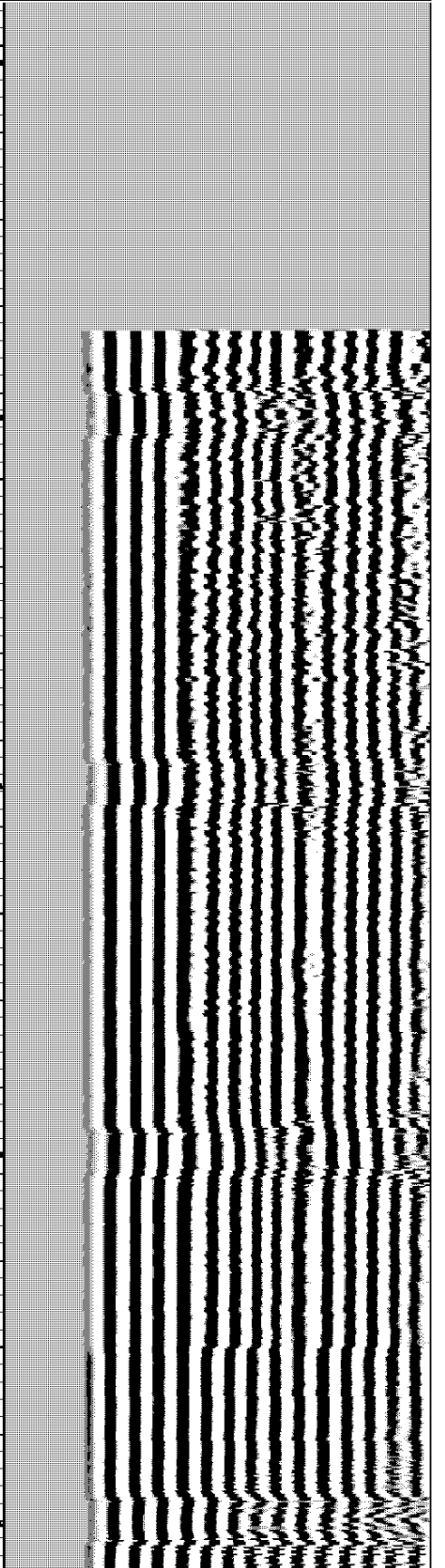
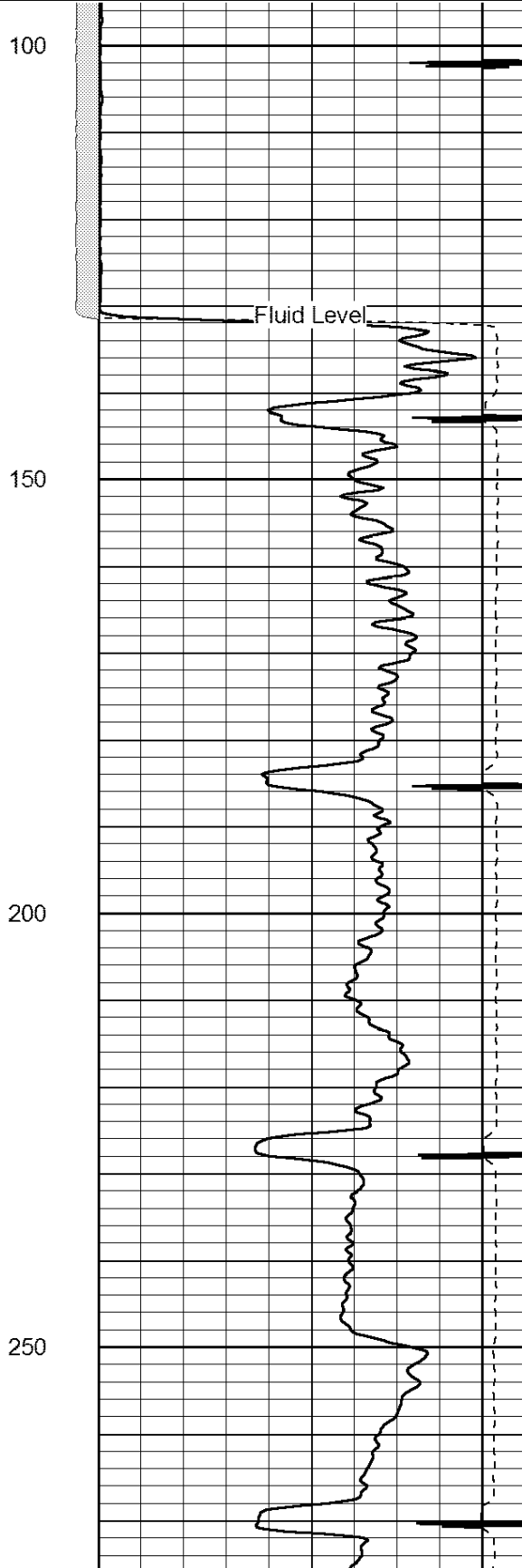
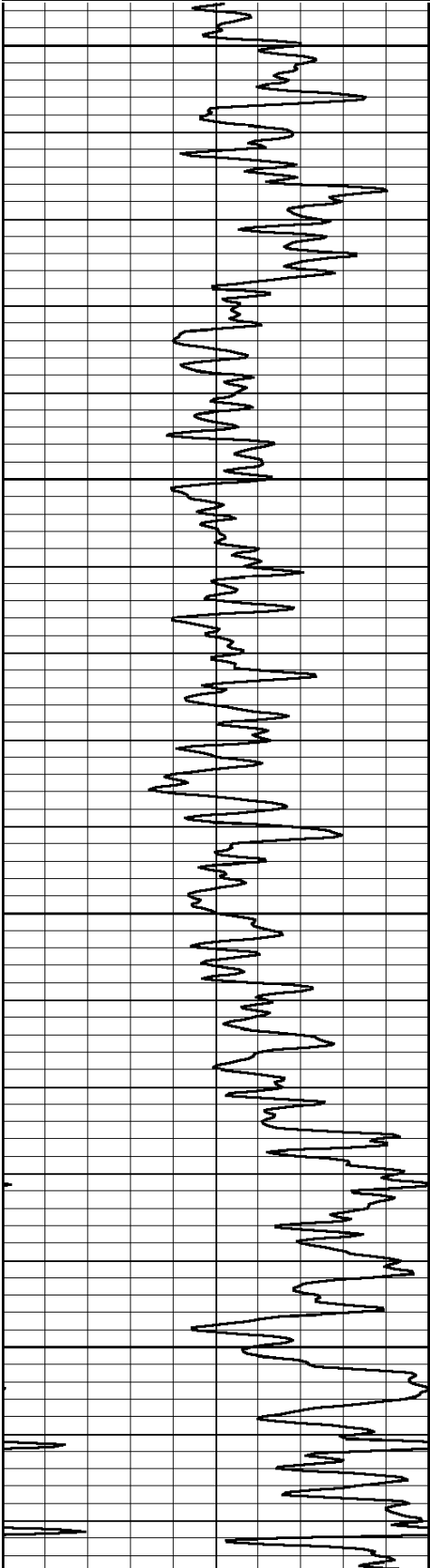
Comments

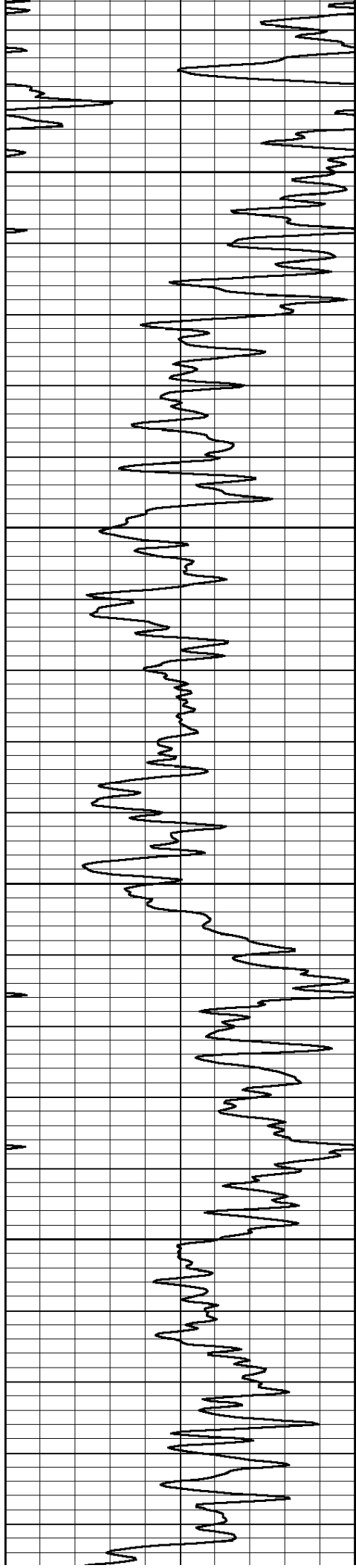
THANK YOU FOR USING
PERF-TECH WIRELINE SERVICES, INC.
785-628-3969

DIRECTIONS: ARNOLD, Ks.
WEST to H Rd, SOUTH to 195 Rd,
2 EAST to dead end, NORTH into

Database File: july152209.db
 Dataset Pathname: pass4
 Presentation Format: 3x5
 Dataset Creation: Fri Jul 15 09:06:13 2022 by Log Std Casedhole 06040
 Charted by: Depth in Feet scaled 1:240

| | | | | | | | | |
|---|------------------|-----|-----|-----------------------|-----|-----|---------------------|------|
| 0 | Gamma Ray (GAPI) | 150 | 0 | 3' AMPLITUDE (mV) | 100 | 200 | 5' Variable Density | 1100 |
| | | | 475 | 3' TRAVEL TIME (usec) | 235 | | | |
| | | | 9 | Collar Locator | -1 | | | |



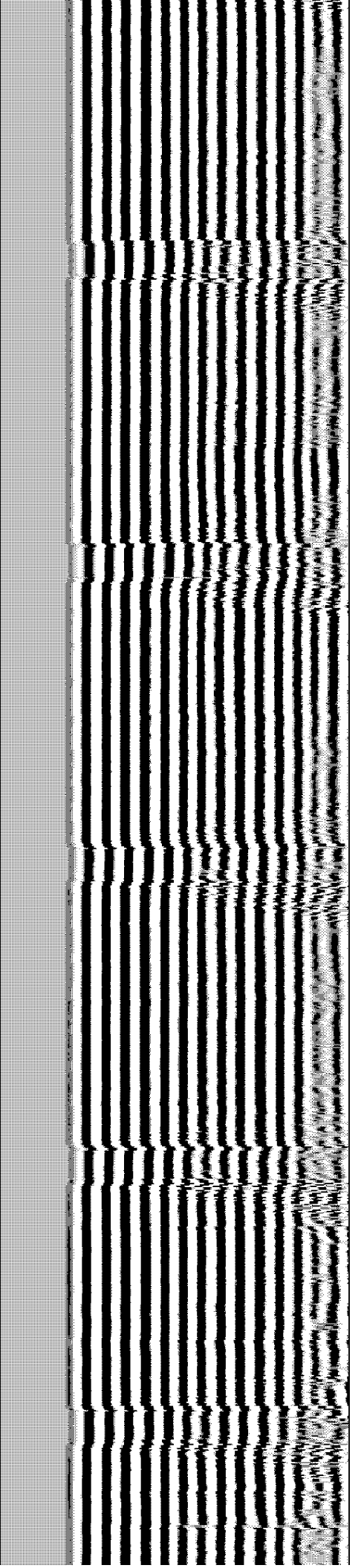
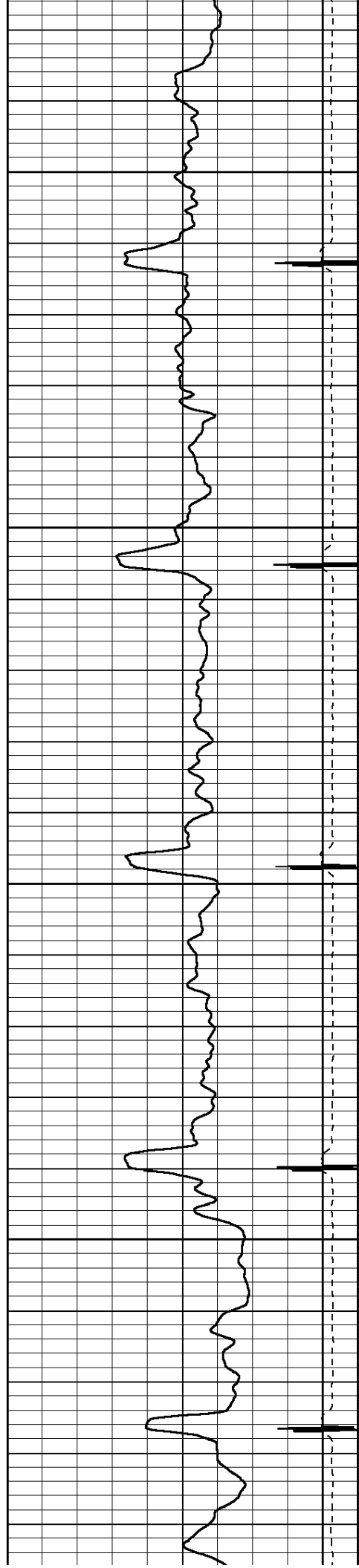


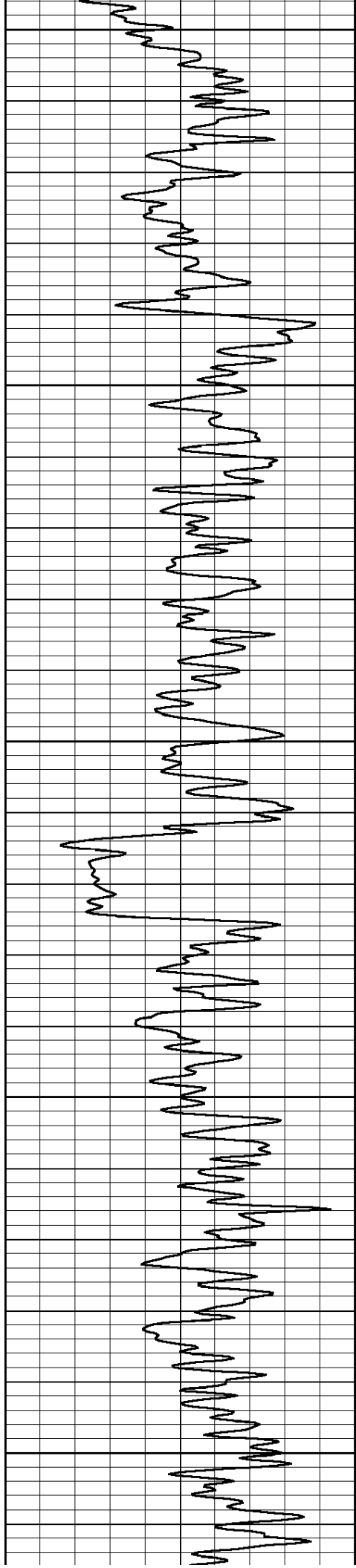
300

350

400

450





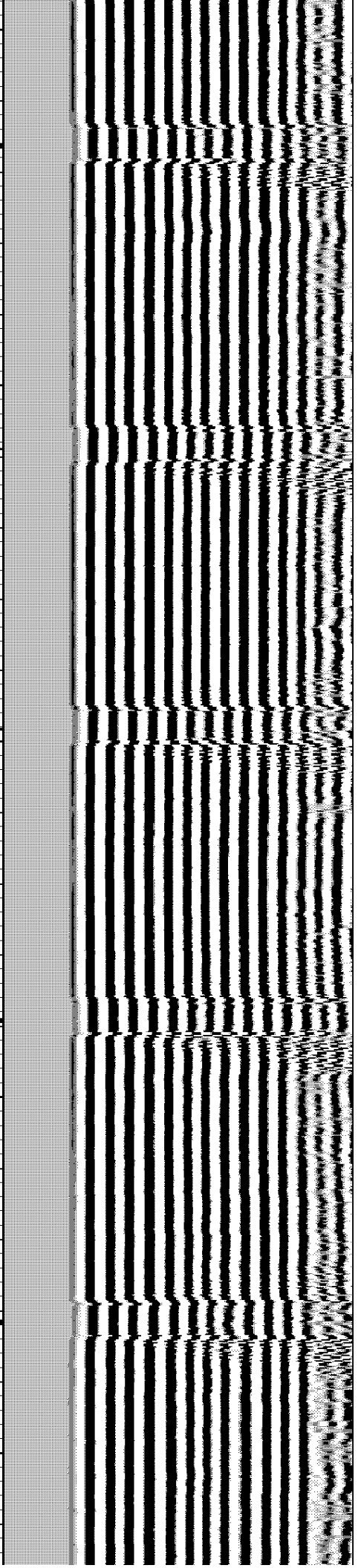
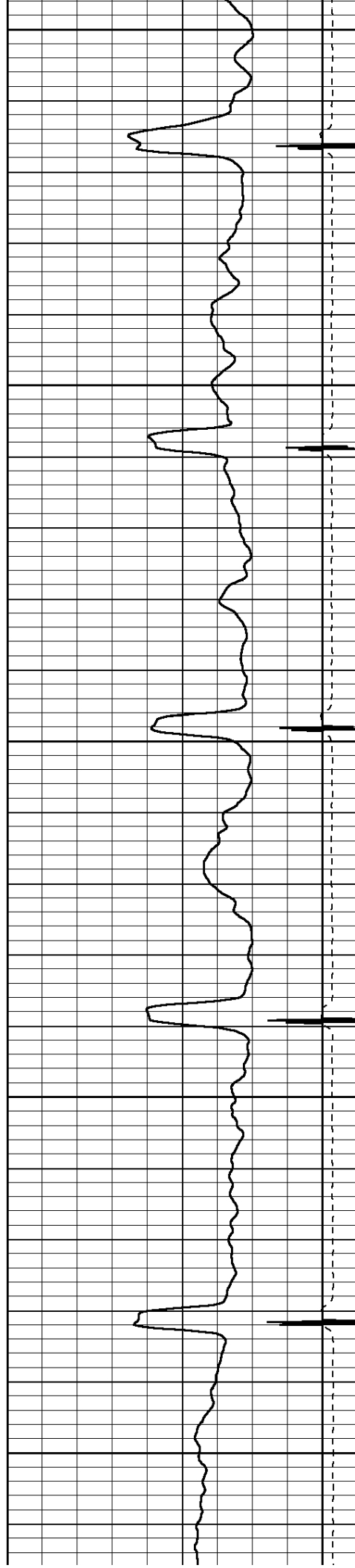
500

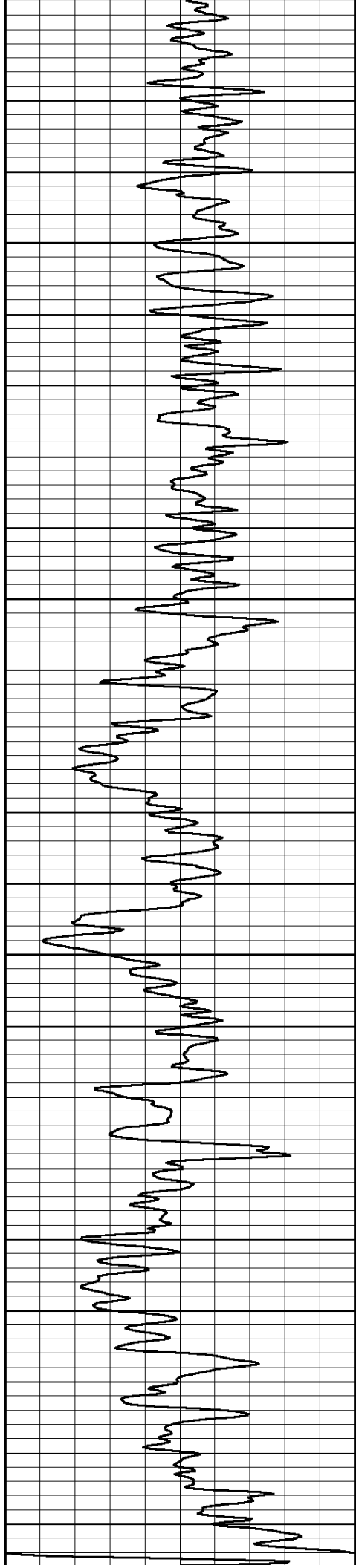
550

600

650

700



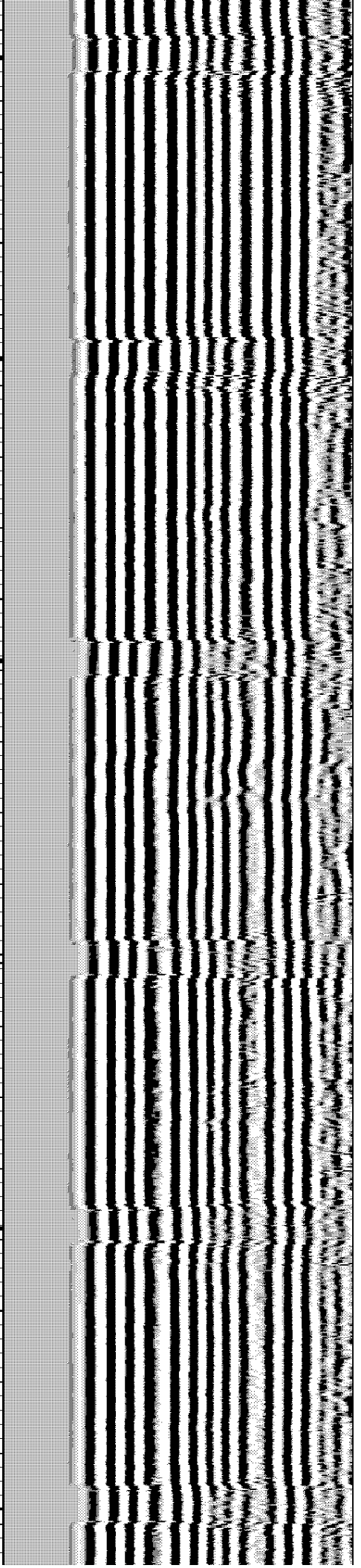
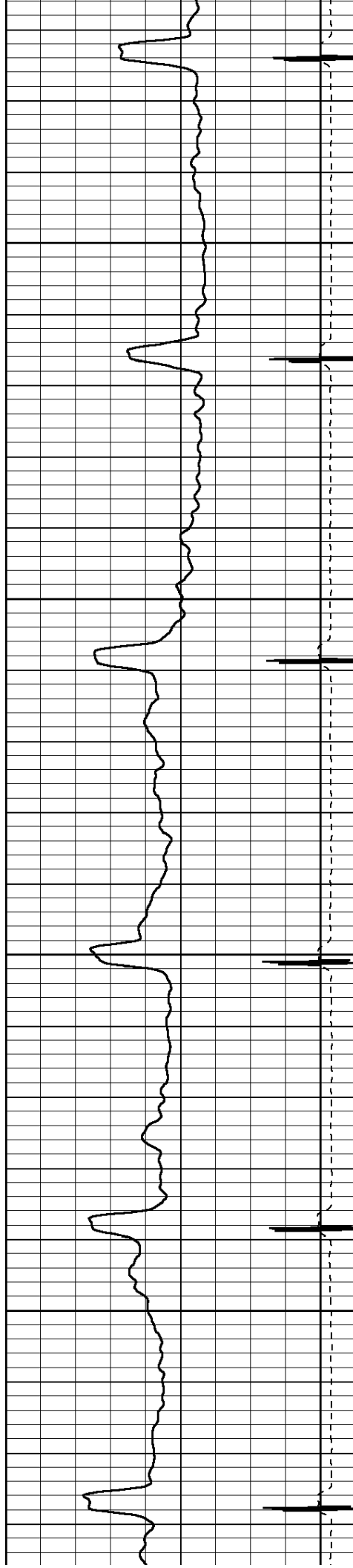


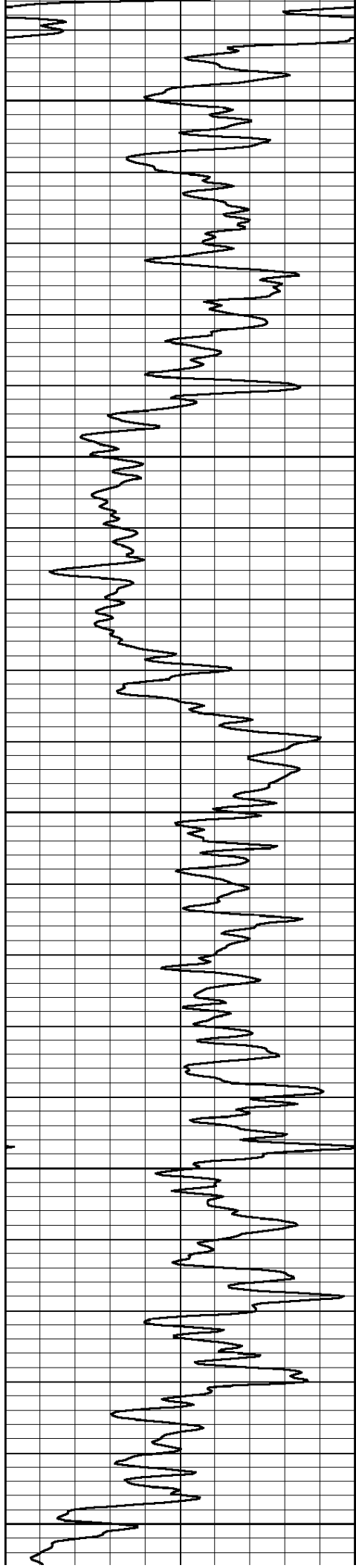
750

800

850

900





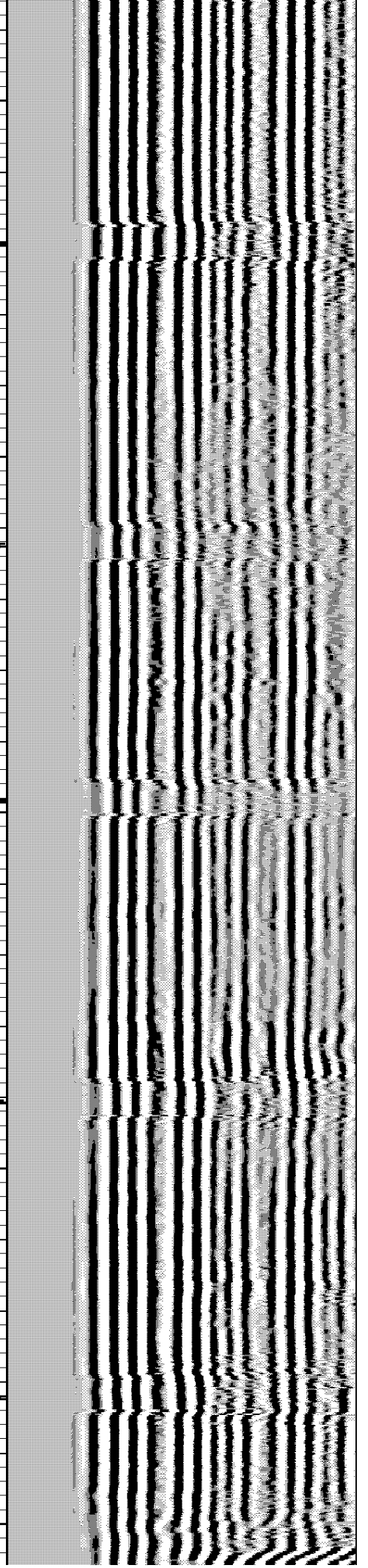
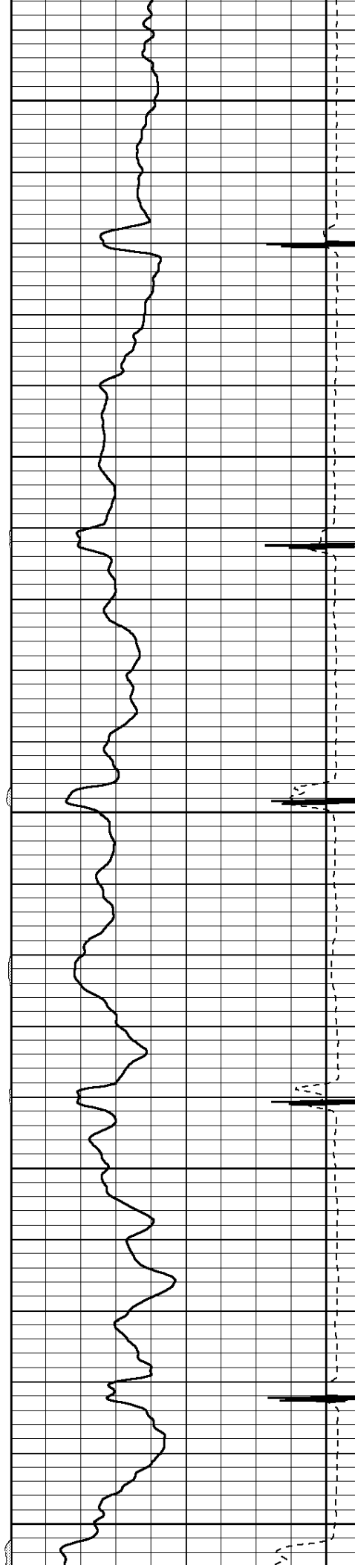
950

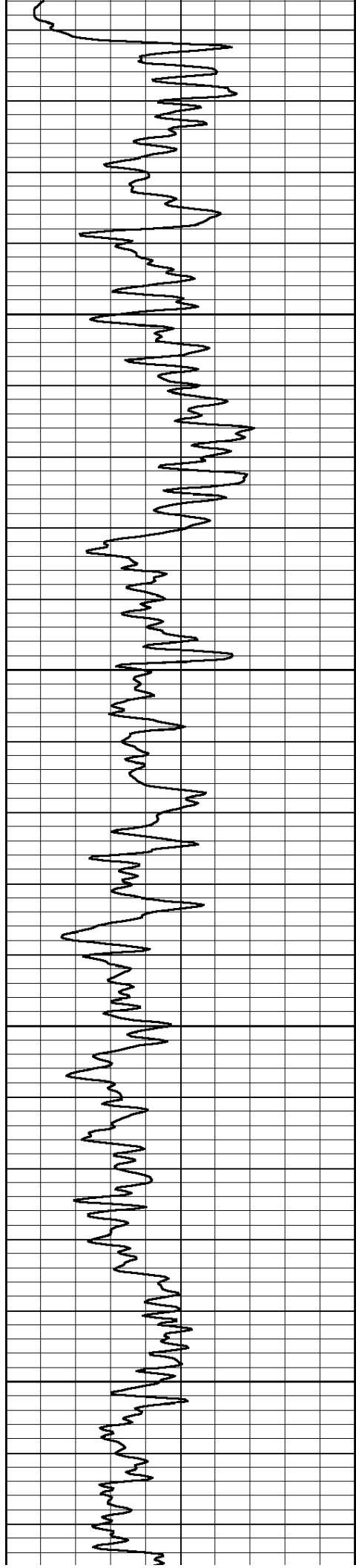
1000

1050

1100

1150



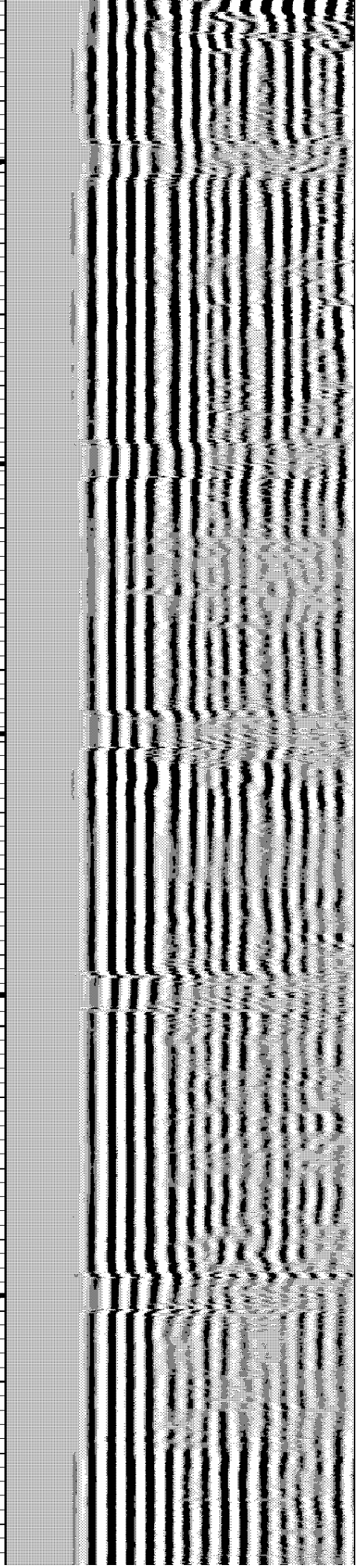
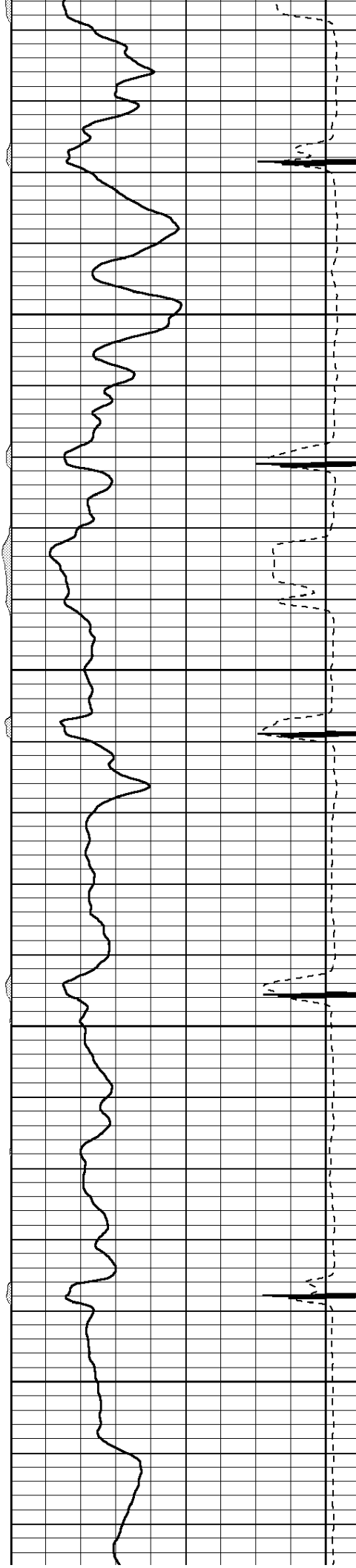


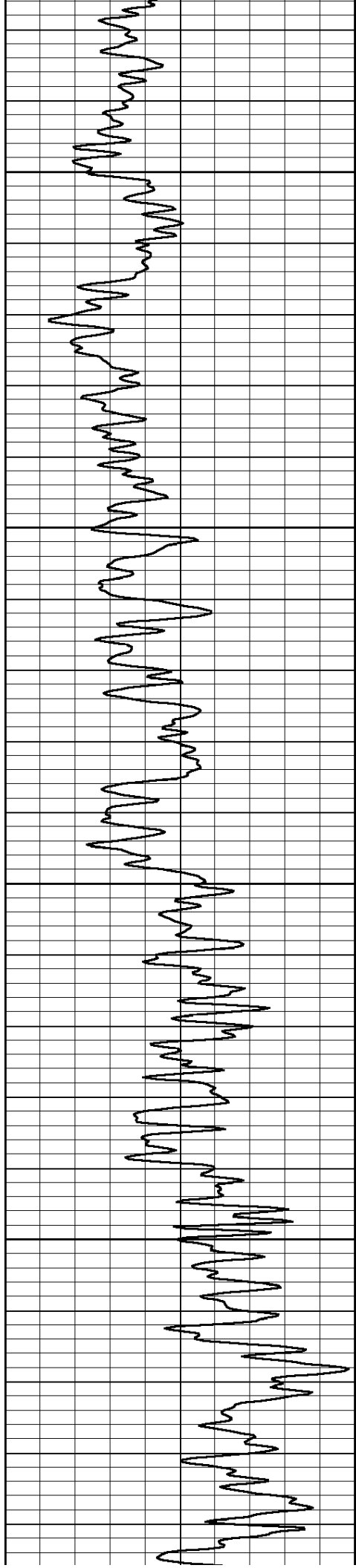
1200

1250

1300

1350



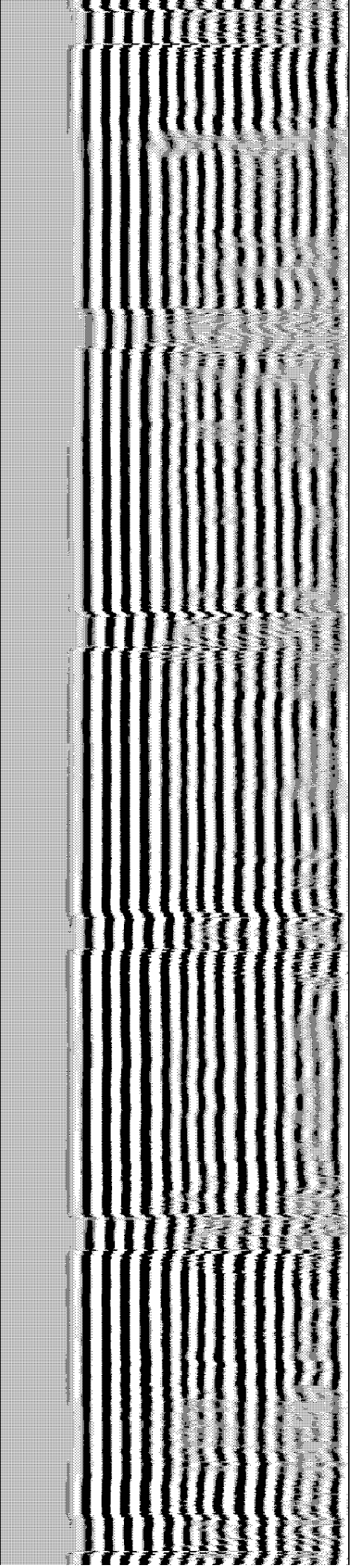
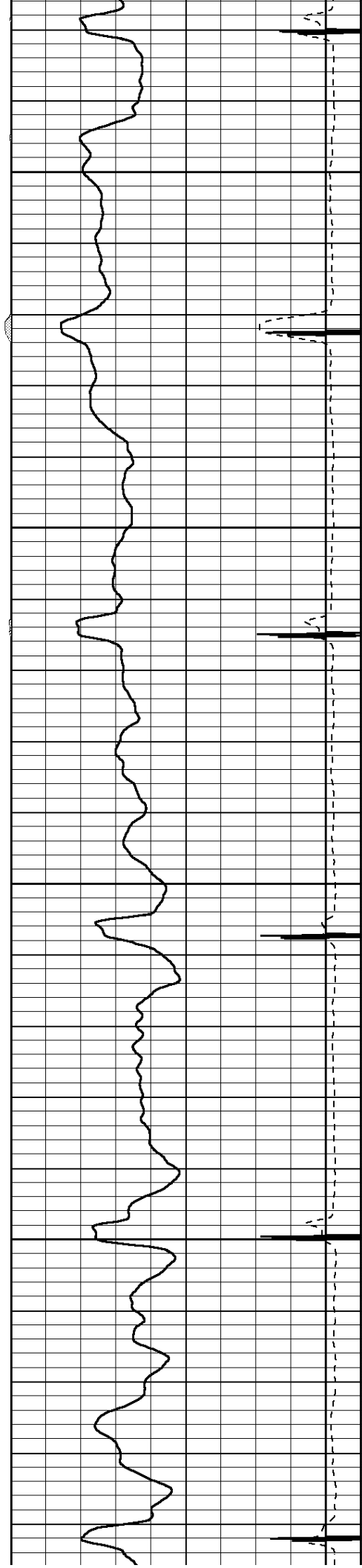


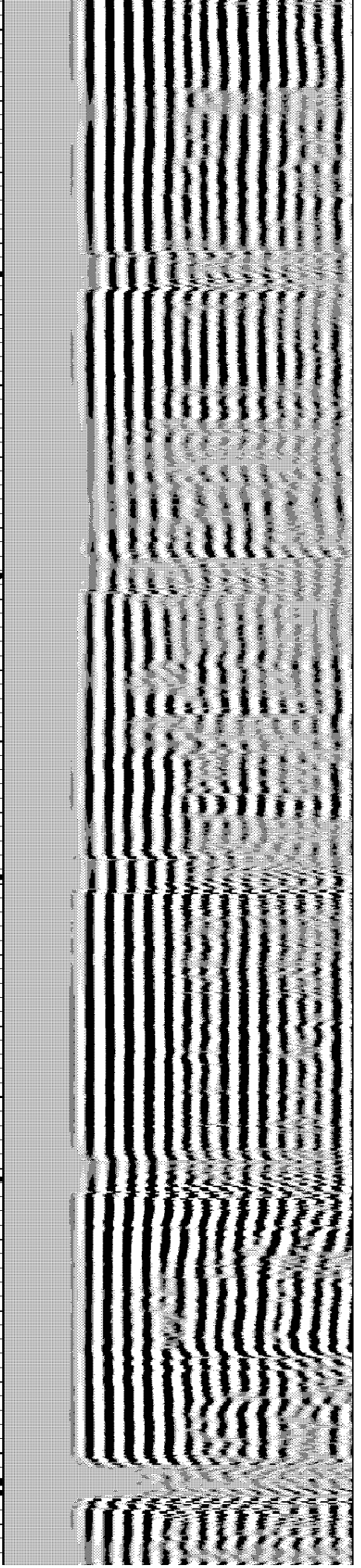
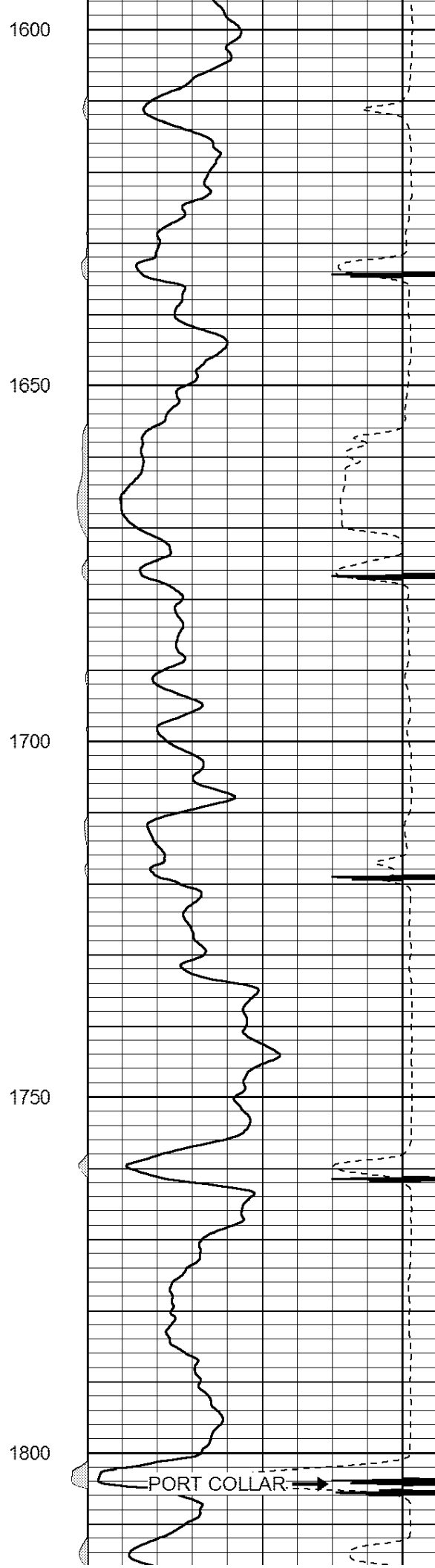
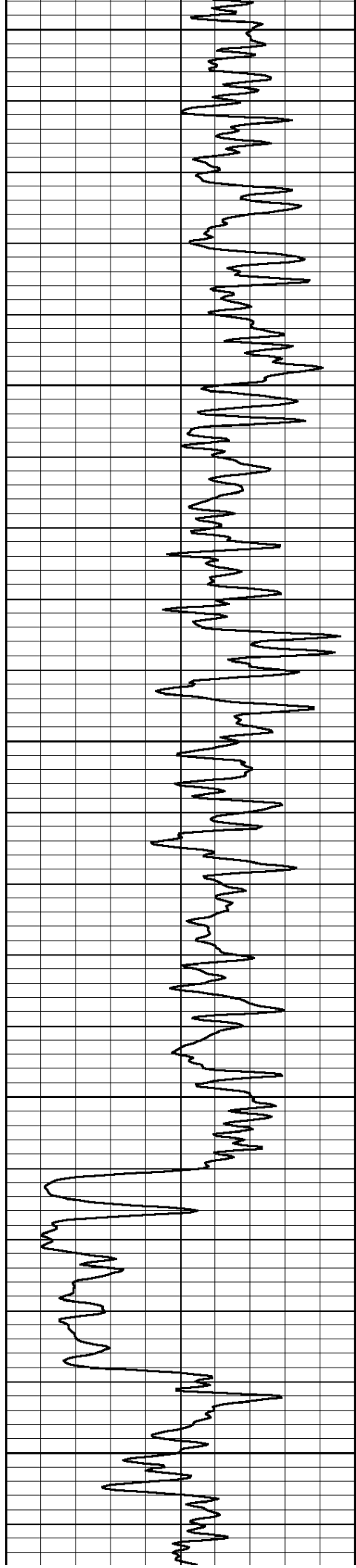
1400

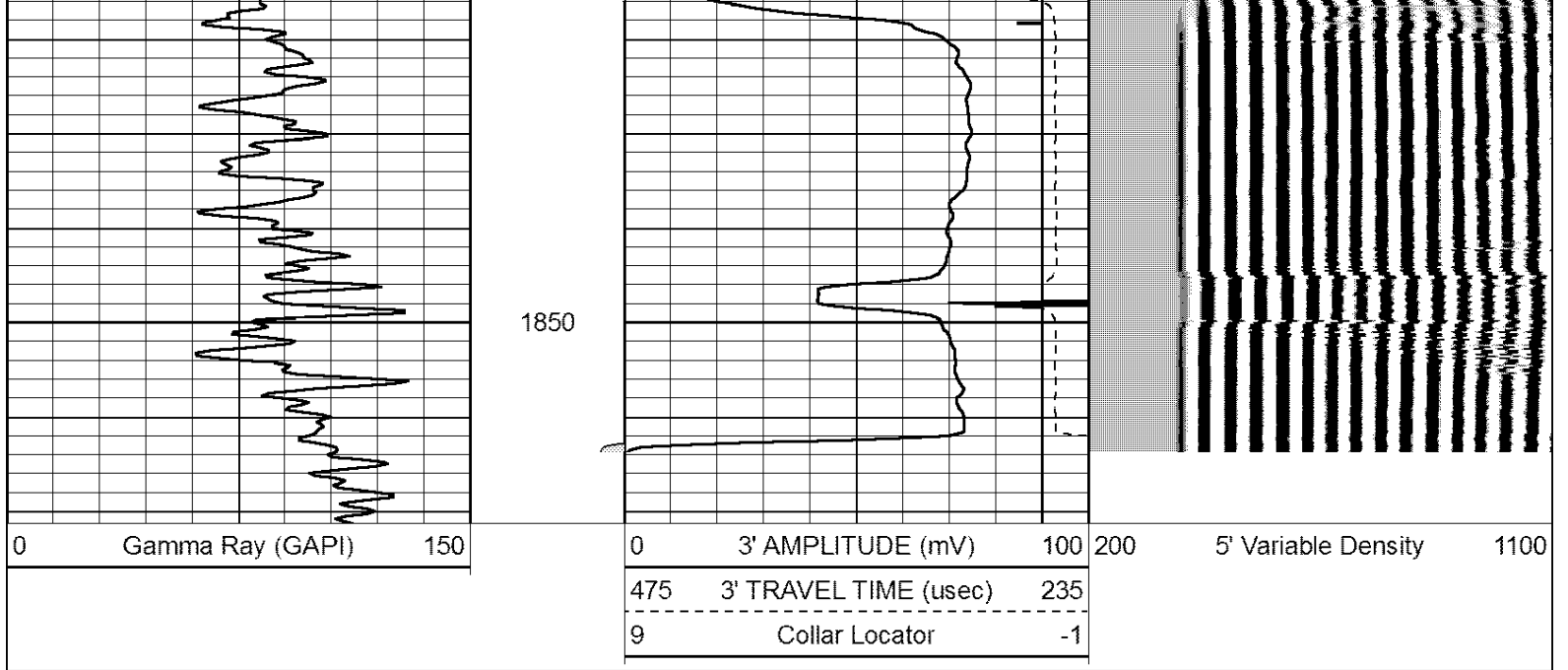
1450

1500

1550

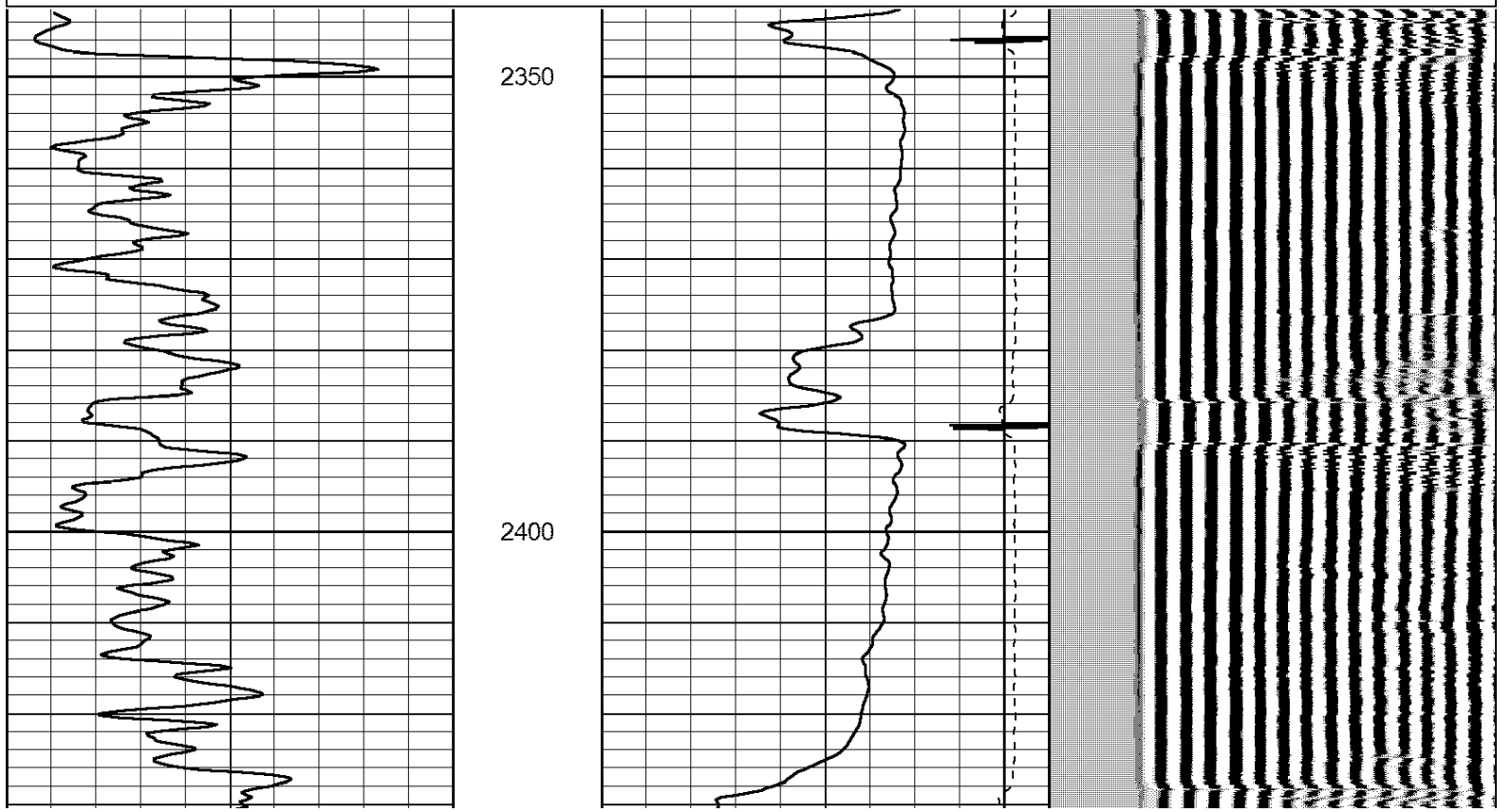
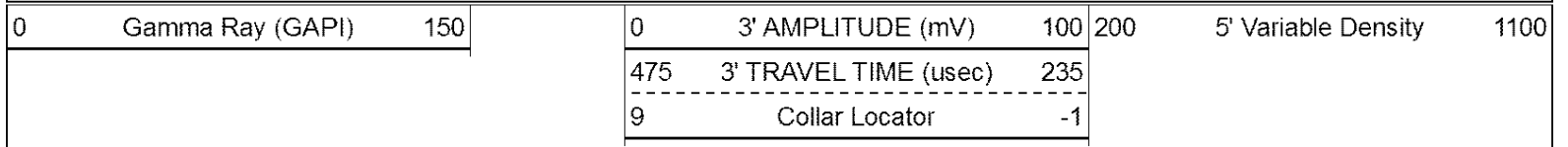


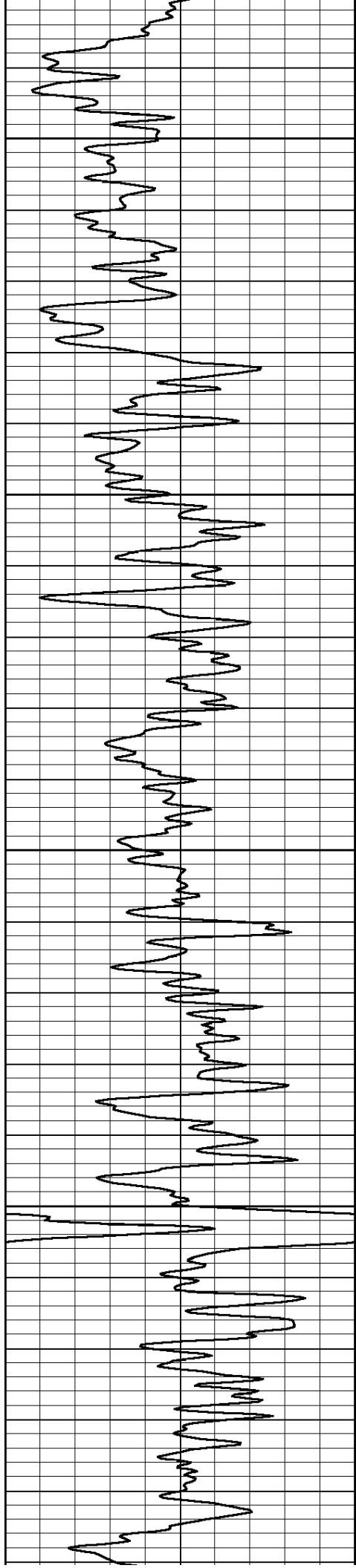




MAIN PASS

Database File: july152209.db
 Dataset Pathname: pass3
 Presentation Format: 3x5
 Dataset Creation: Fri Jul 15 08:33:27 2022 by Log Std Casedhole 06040
 Charted by: Depth in Feet scaled 1:240





Top of Cement

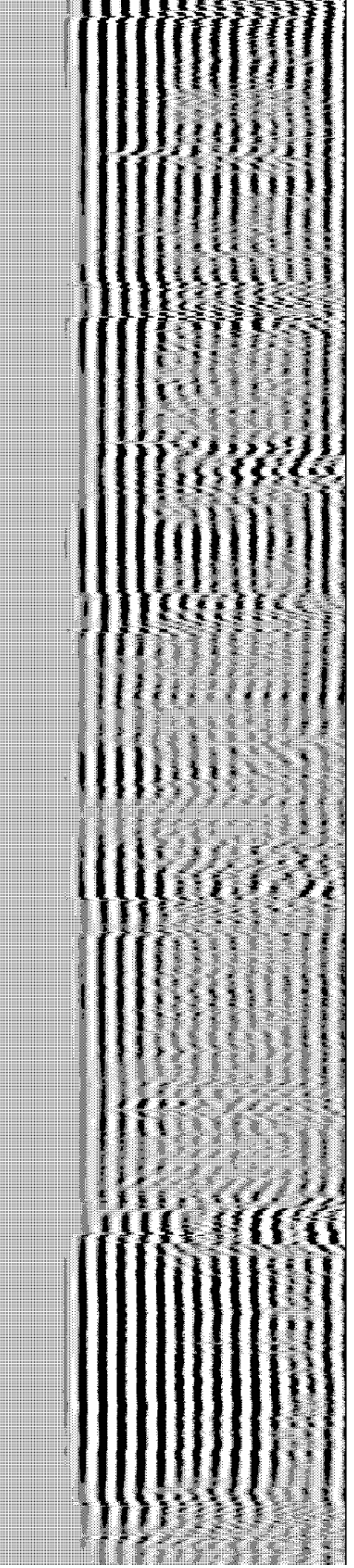
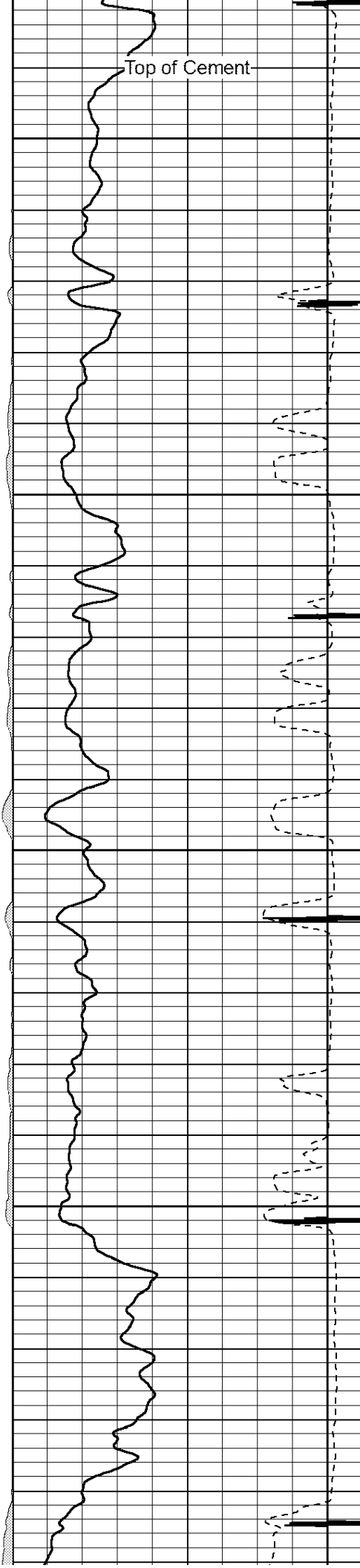
2450

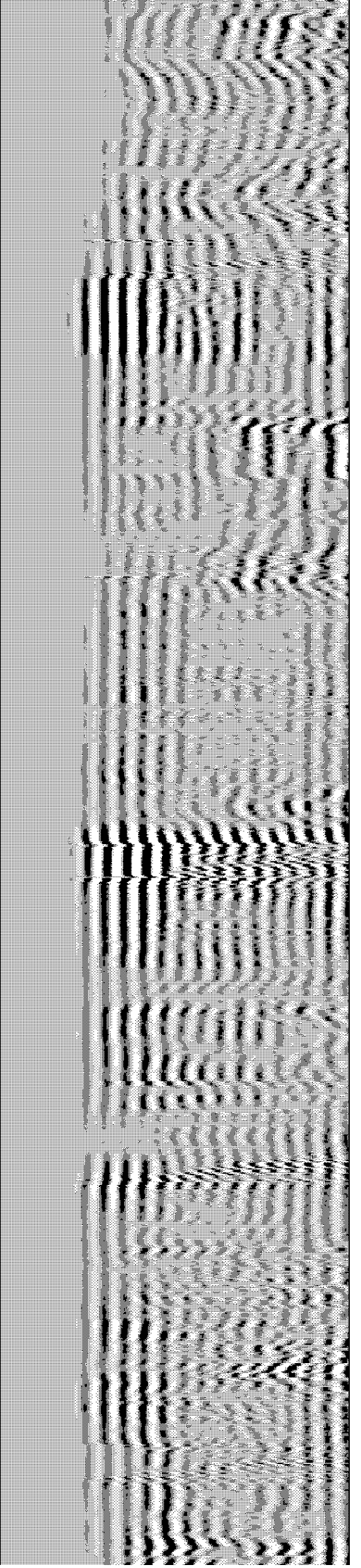
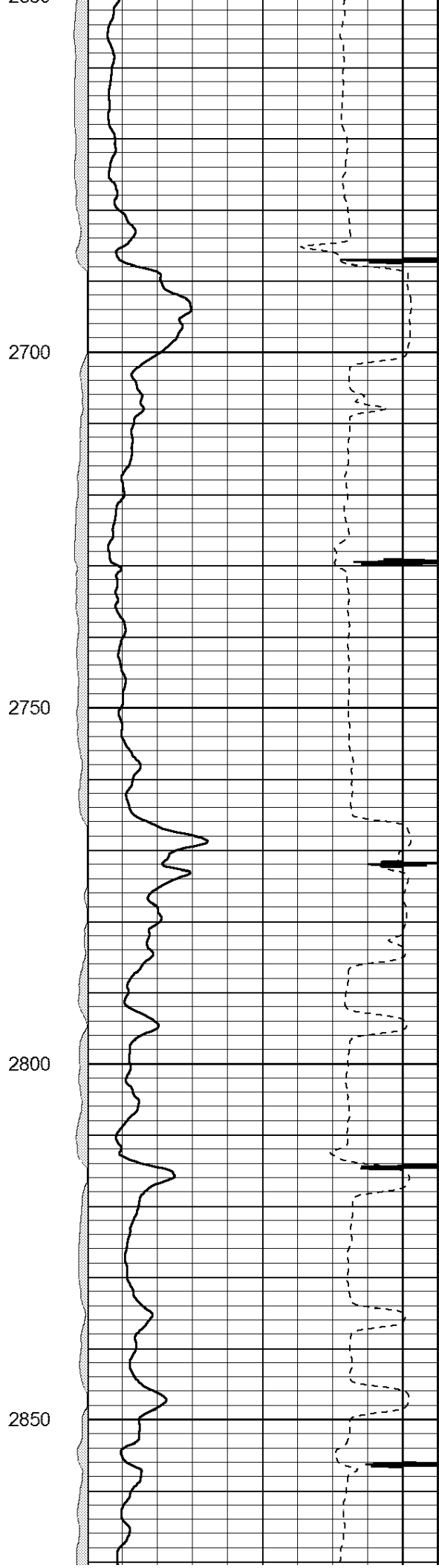
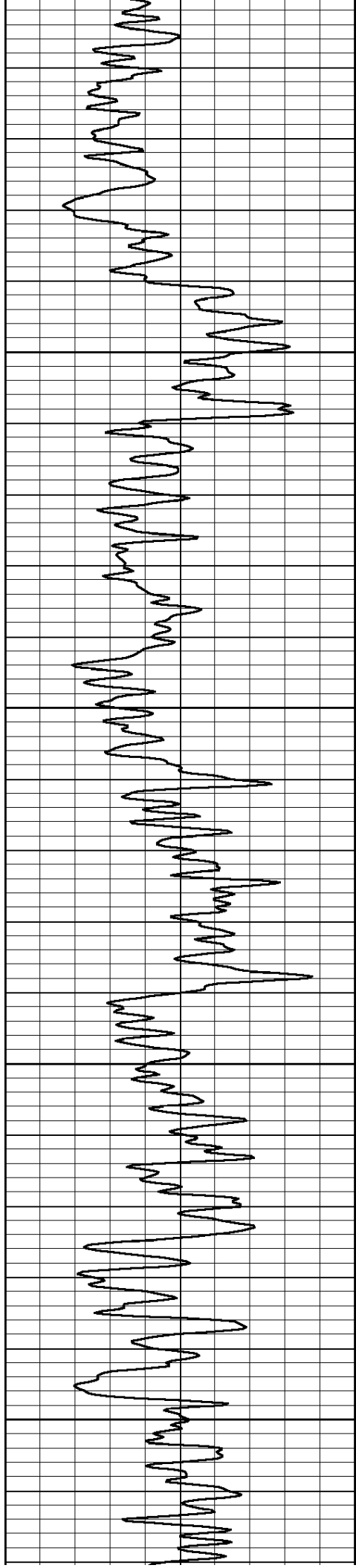
2500

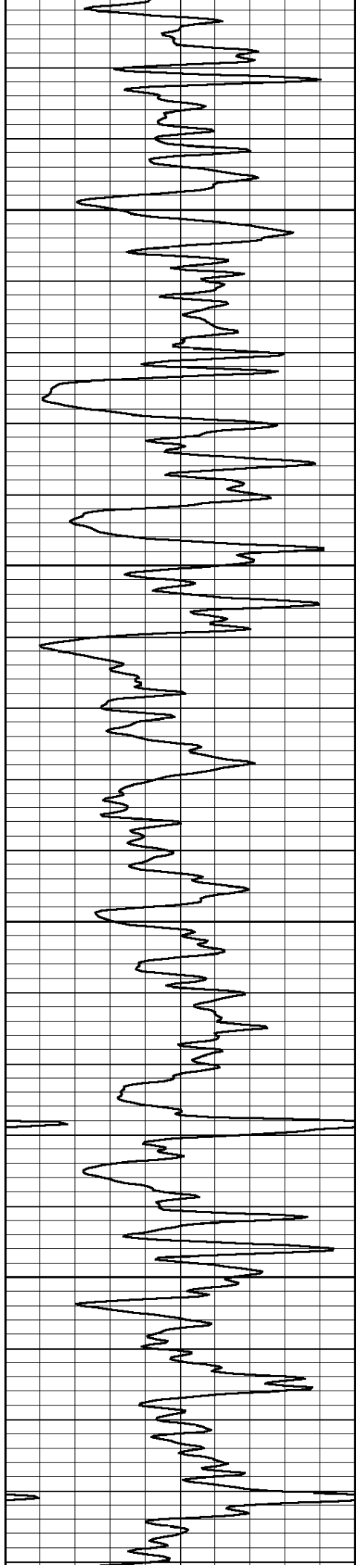
2550

2600

2650





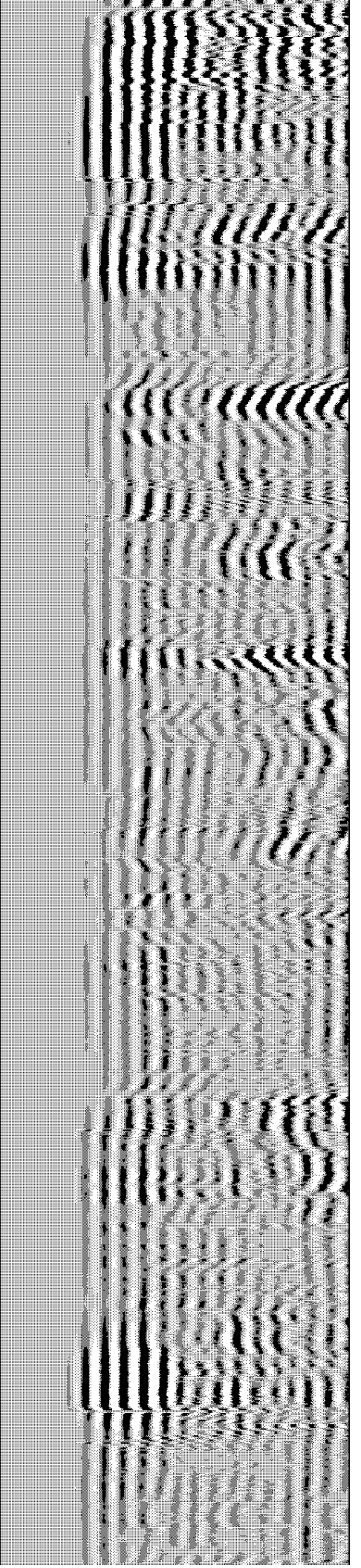
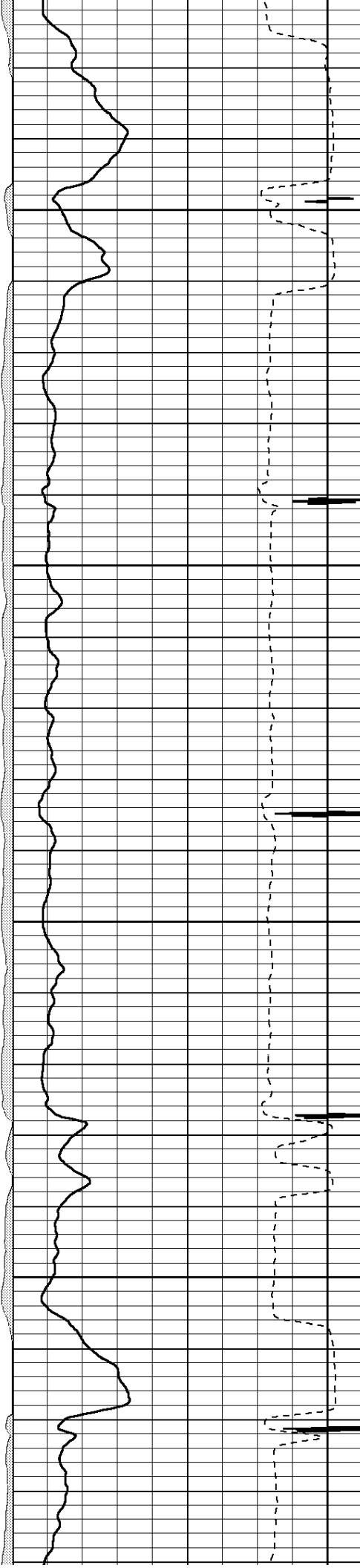


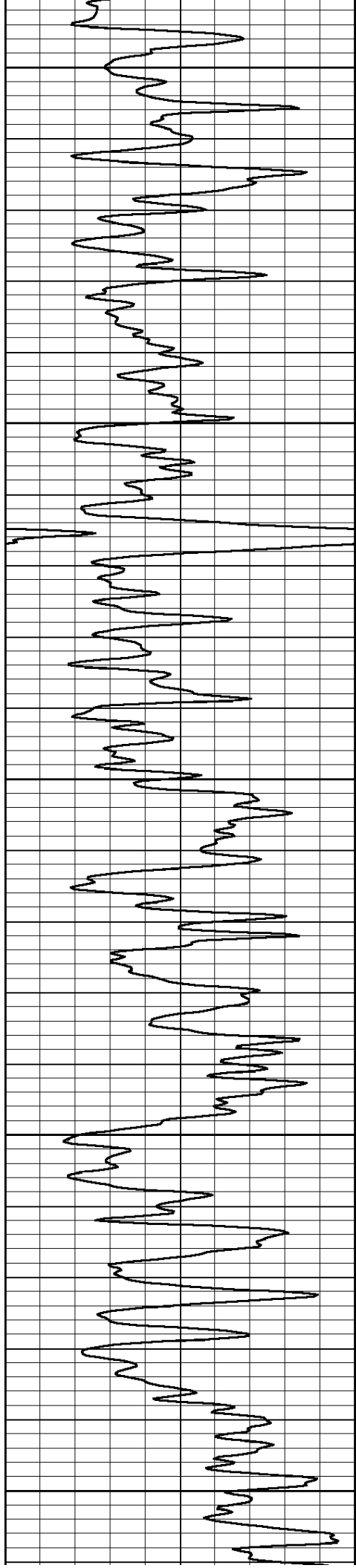
2900

2950

3000

3050





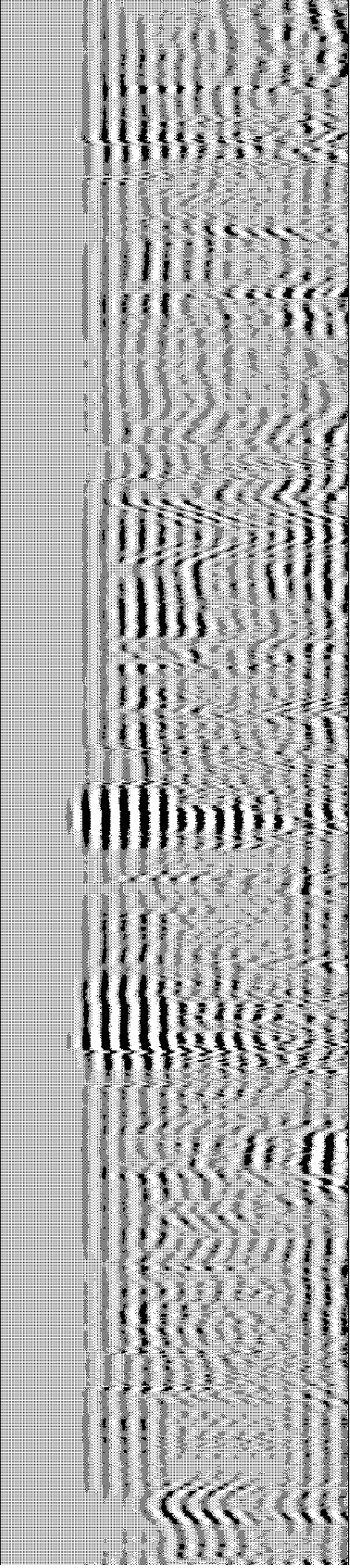
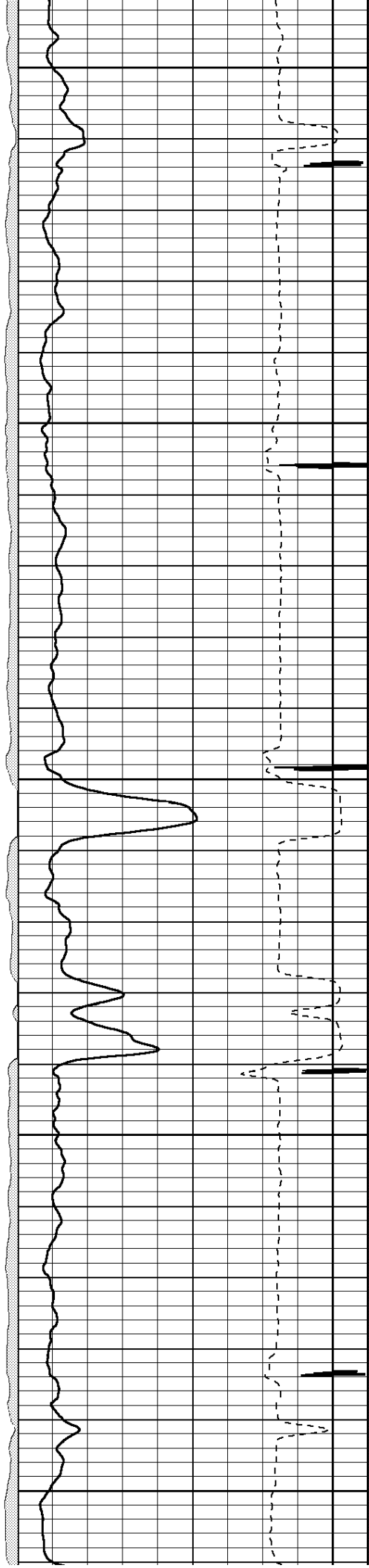
3100

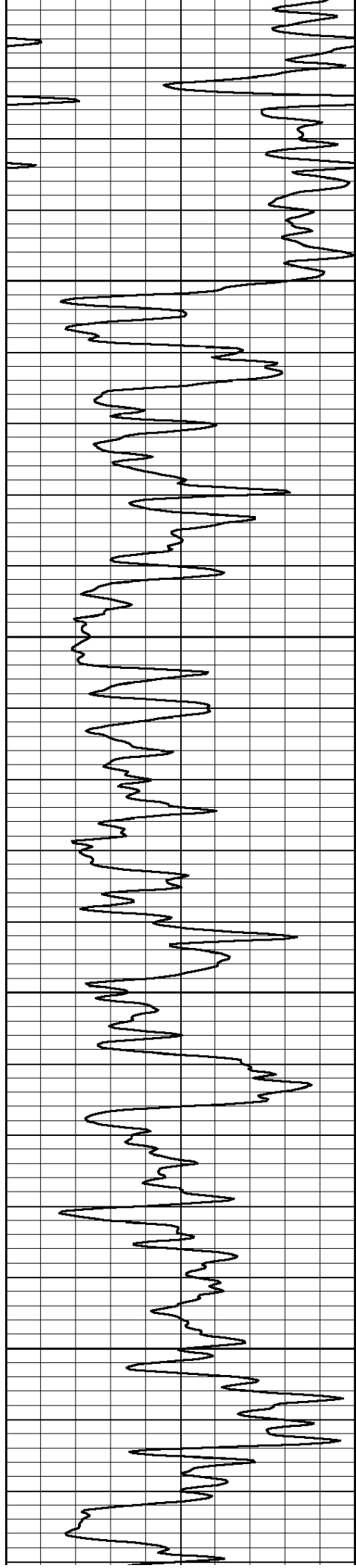
3150

3200

3250

3300



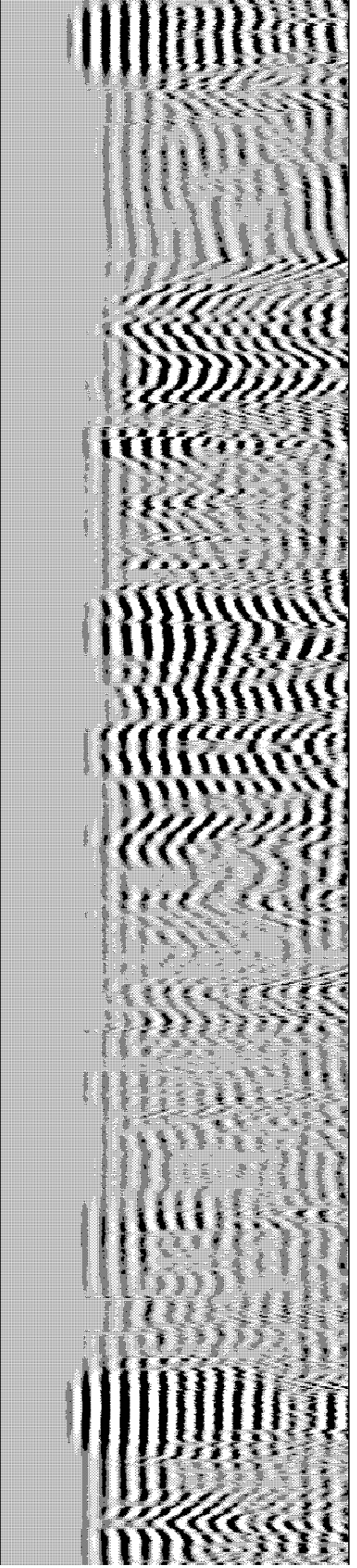
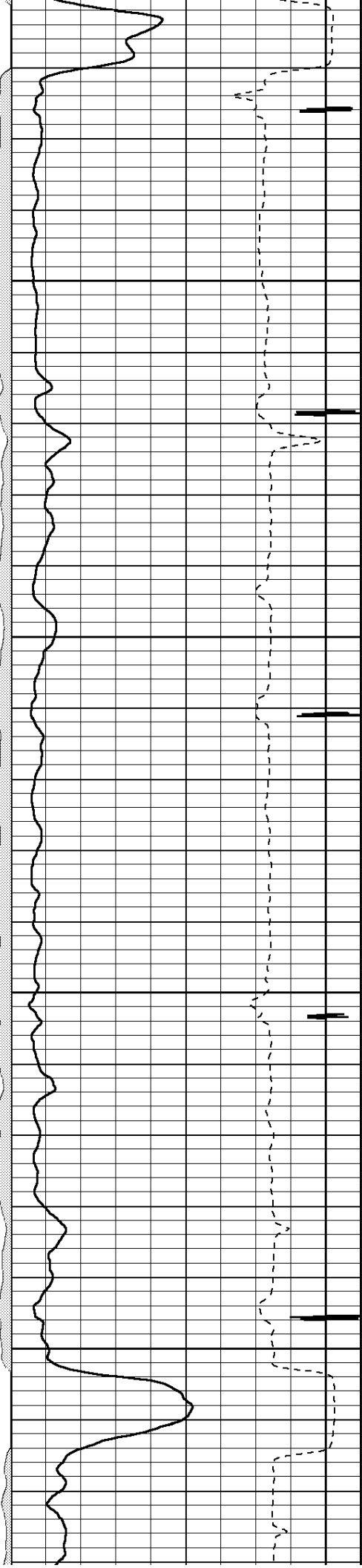


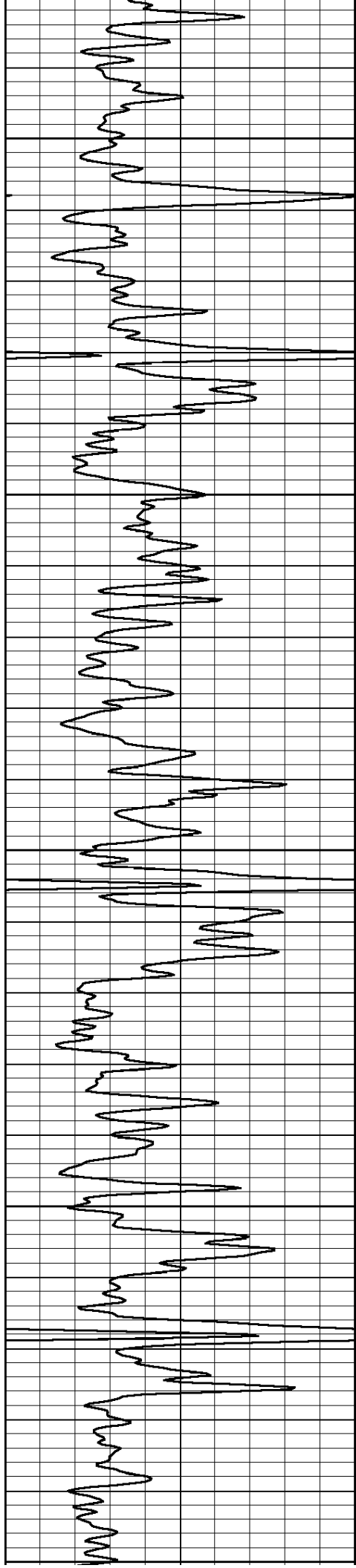
3350

3400

3450

3500





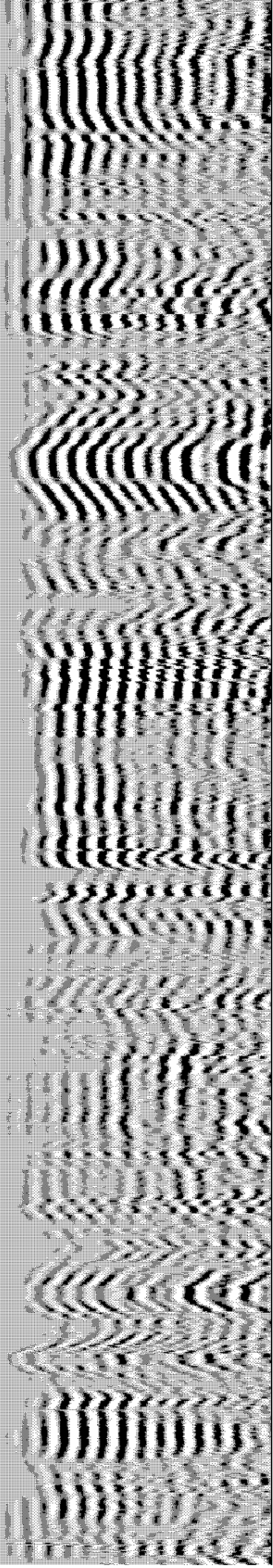
3550

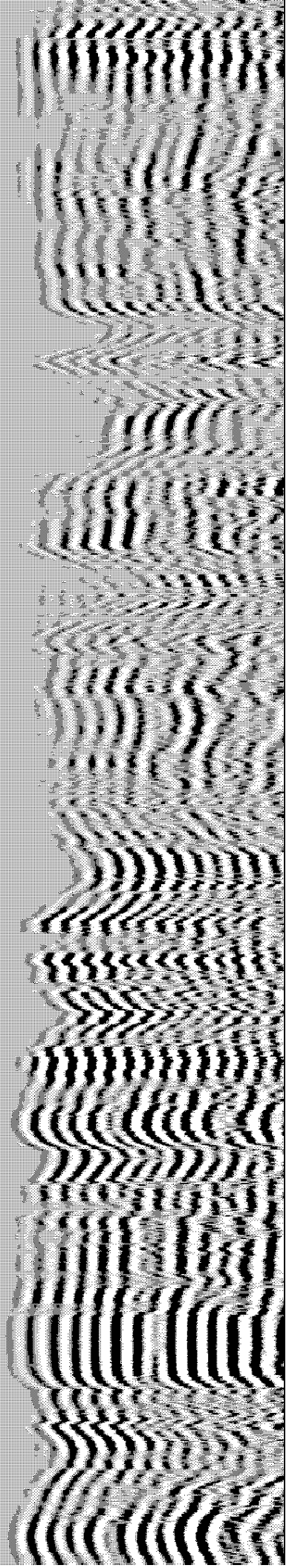
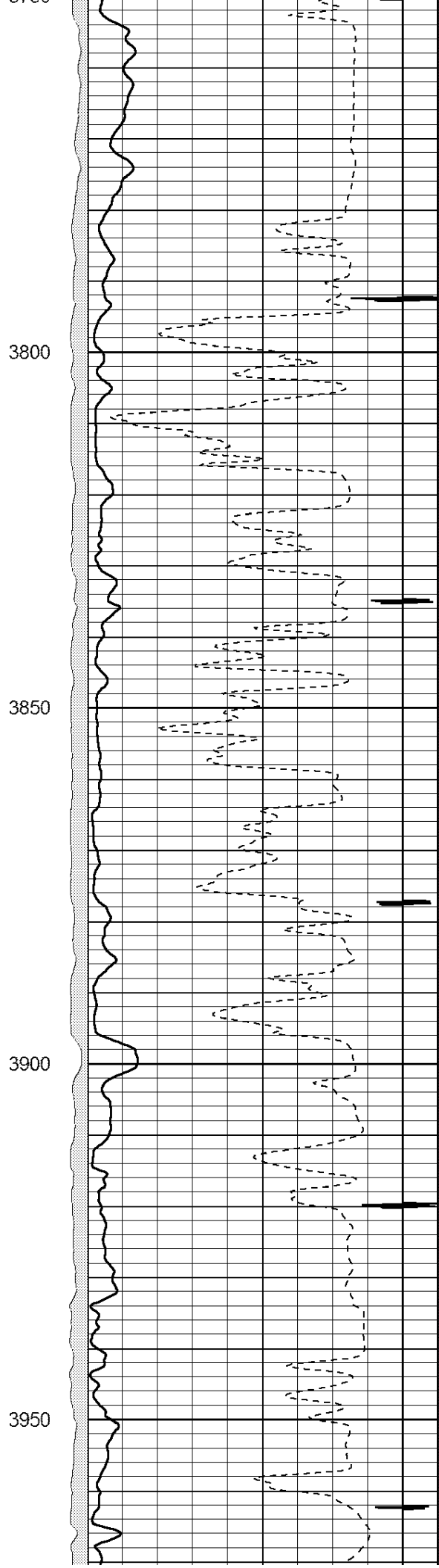
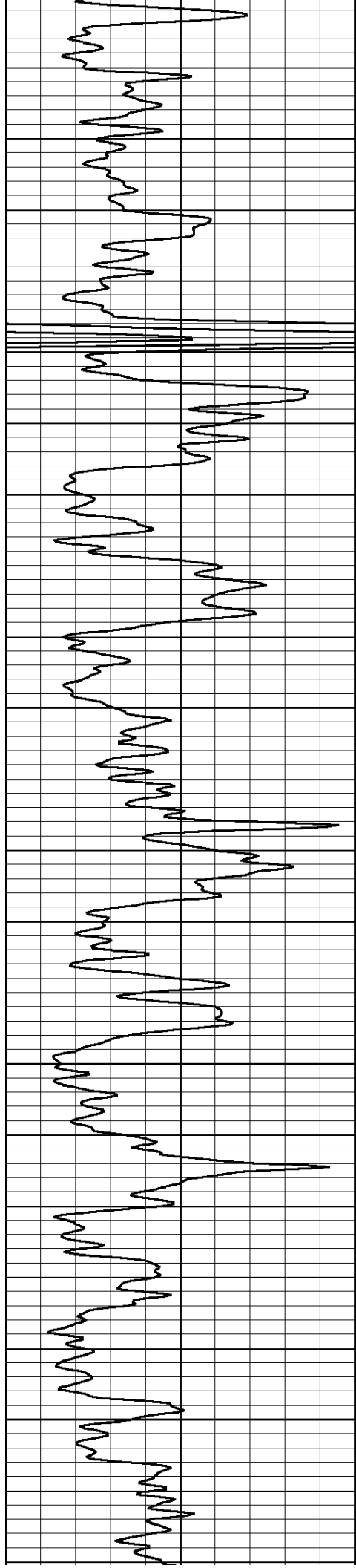
3600

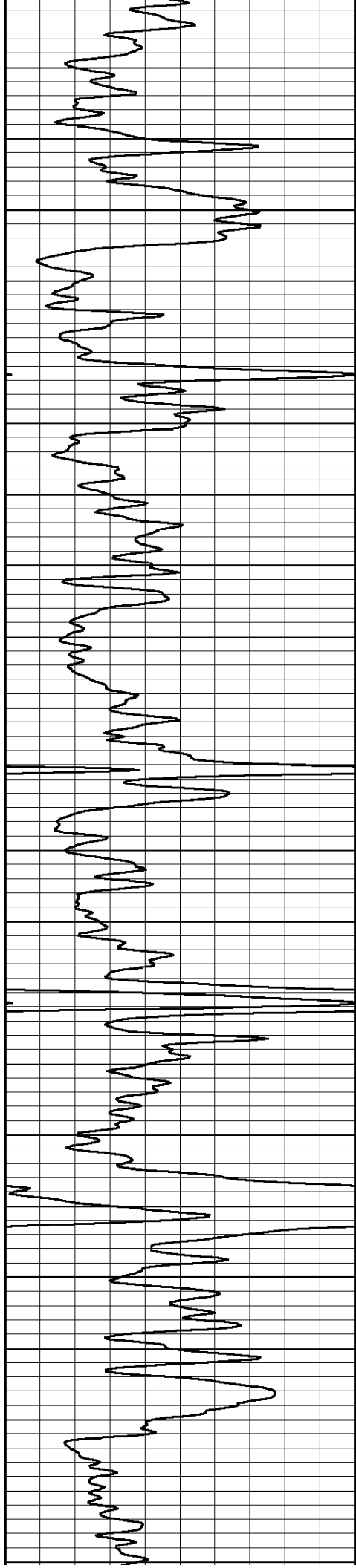
3650

3700

3750





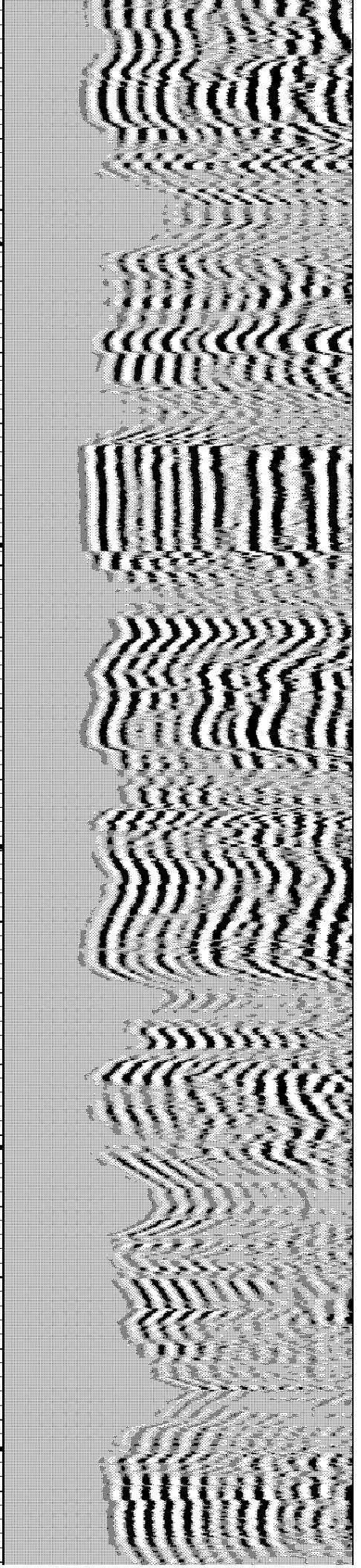
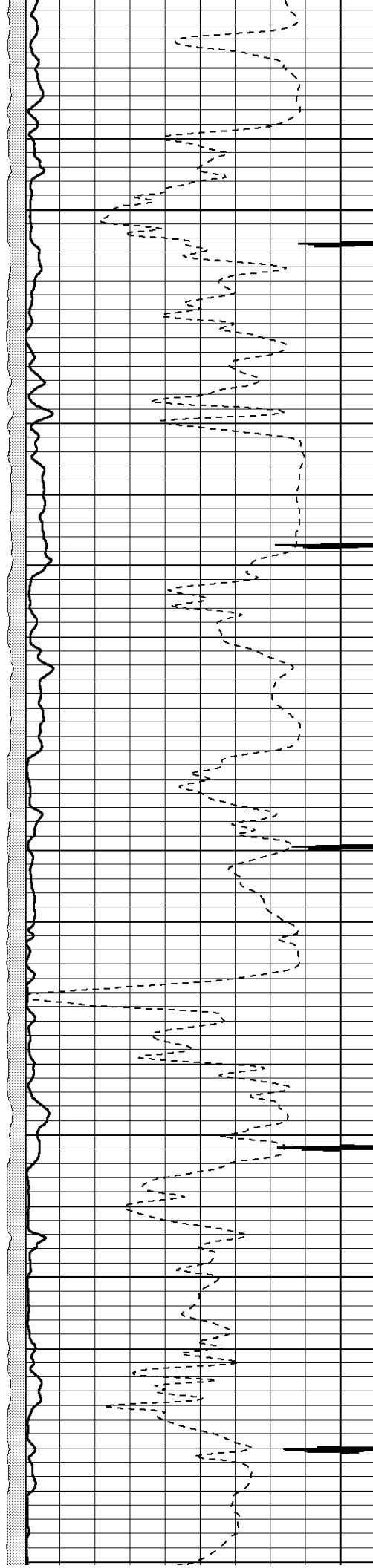


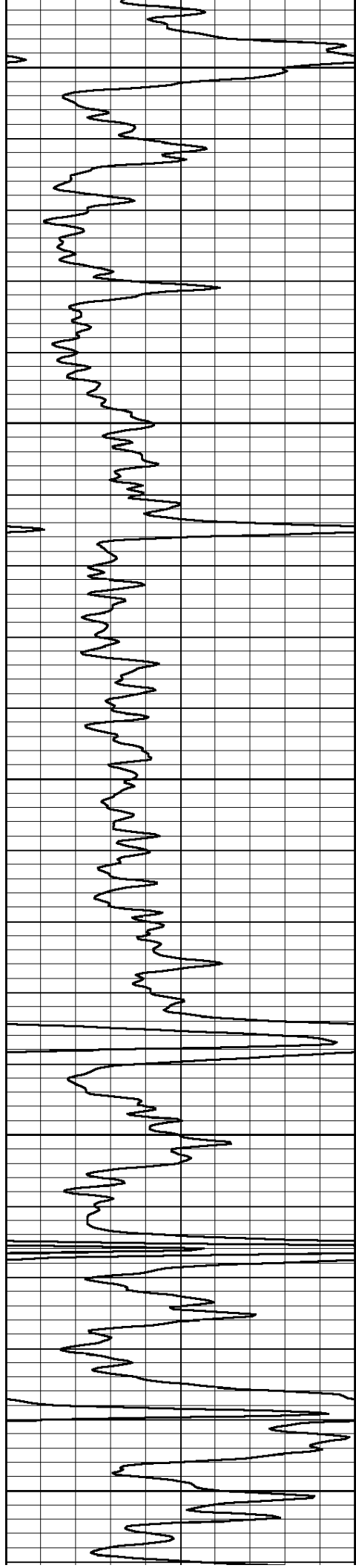
4000

4050

4100

4150





4200

4250

4300

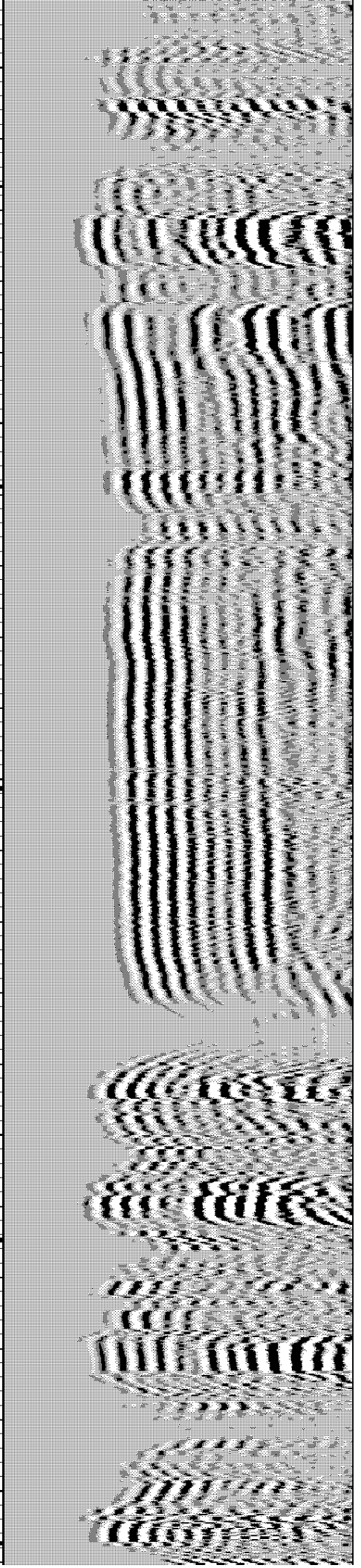
4350

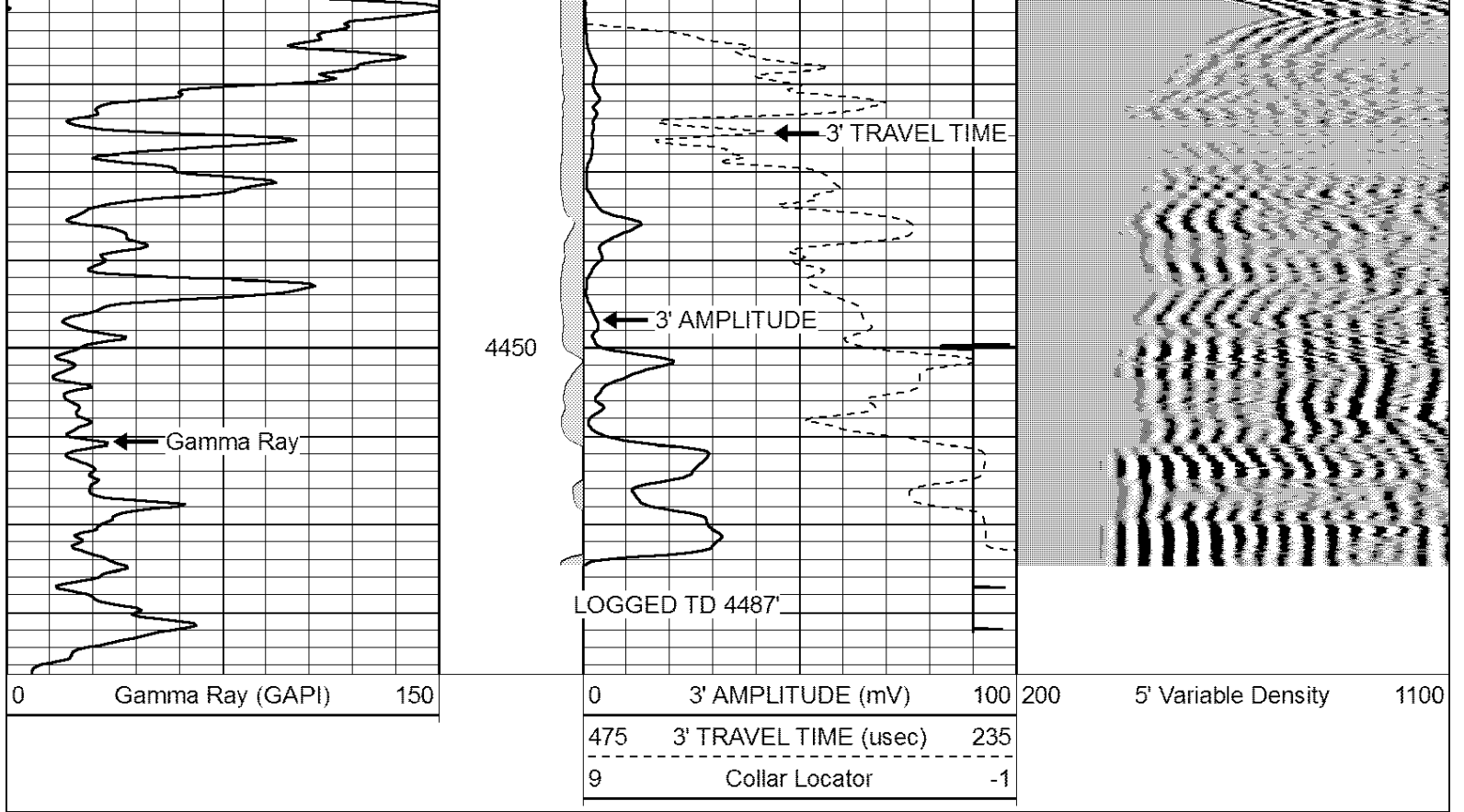
4400



MARKER JOINT

Casing Collar →

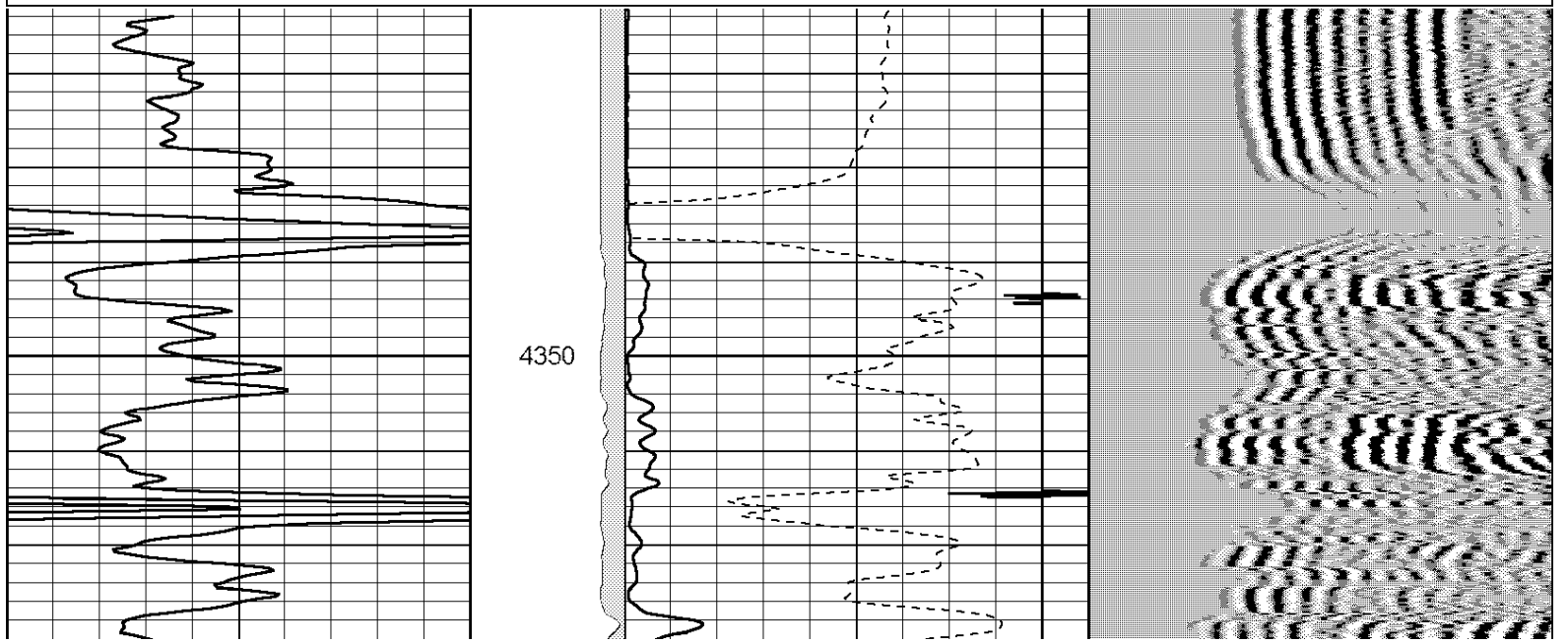
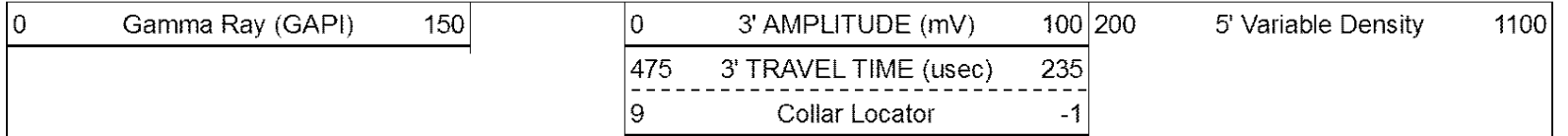


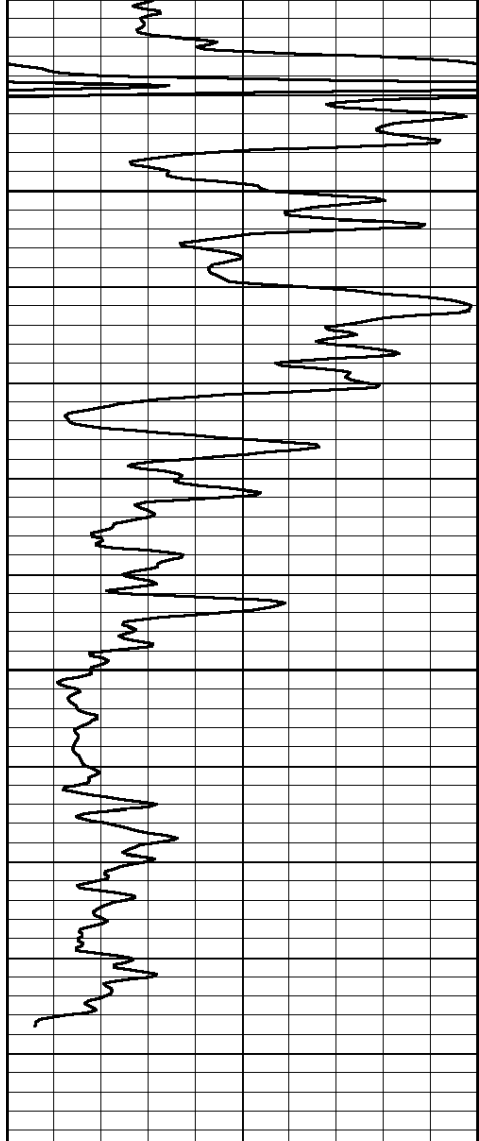


Perf-Tech
Wireline Services, Inc.

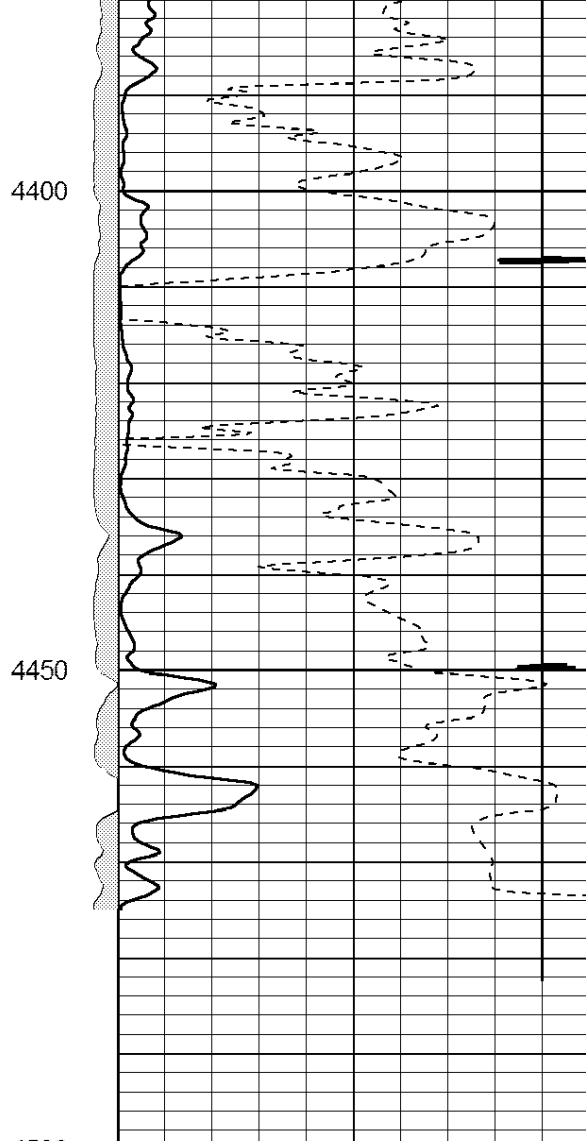
REPEAT SECTION

Database File: july152209.db
 Dataset Pathname: pass2
 Presentation Format: 3x5
 Dataset Creation: Fri Jul 15 08:25:25 2022 by Log Std Casedhole 06040
 Charted by: Depth in Feet scaled 1:240





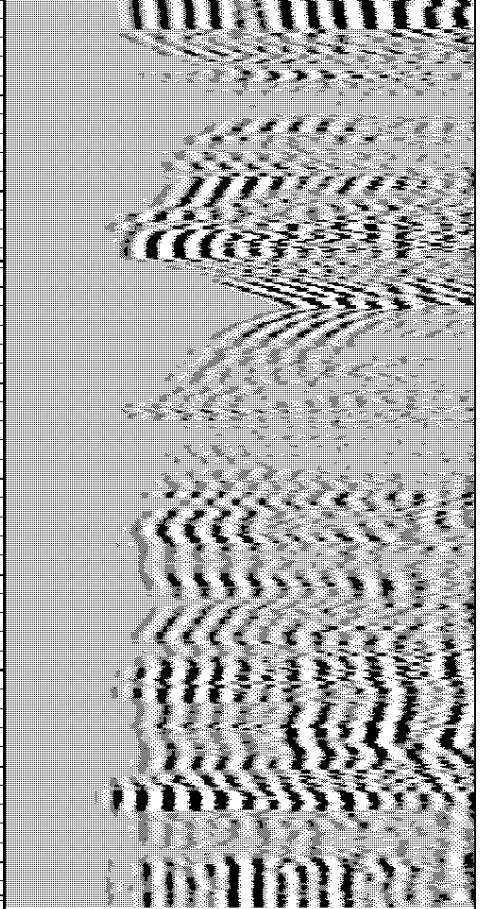
0 Gamma Ray (GAPI) 150



0 3' AMPLITUDE (mV) 100

475 3' TRAVEL TIME (usec) 235

9 Collar Locator -1



200 5' Variable Density 1100