



MICRO LOG

Company PALOMINO PETROLEUM, INC.
Well SPACEMAN #1
Field ALDRICH NORTHEAST
County NESS State KANSAS

Location: API #: 15-135-26181-0000
1345' FNL & 910' FWL
NW - NE - SW - NW
SEC 26 TWP 17S RGE 25W
Permanent Datum GROUND LEVEL Elevation 2523
Log Measured From KELLY BUSHING 5' A.G.L
Drilling Measured From KELLY BUSHING
Other Services CDL/CNL DIL
Elevation K.B. 2528 D.F. 2526 G.L. 2523

Table with columns: Date, Run Number, Depth Driller, Depth Logger, Bottom Logged Interval, Top Log Interval, Casing Driller, Casing Logger, Bit Size, Type Fluid in Hole, Density / Viscosity, PH / Fluid Loss, Source of Sample, Rim @ Meas. Temp, Rmc @ Meas. Temp, Source of Rmf / Rmc, Rim @ BHT, Time Circulation Stopped, Time Logger on Bottom, Maximum Recorded Temperature, Equipment Number, Location, Recorded By, Witnessed By.

<<< Fold Here >>>

All interpretations are opinions based on inferences from electrical or other measurements and we cannot and do not guarantee the accuracy or correctness of any interpretation, and we shall not, except in the case of gross or willful negligence on our part, be liable or responsible for any loss, costs, damages, or expenses incurred or sustained by anyone resulting from any interpretation made by any of our officers, agents or employees. These interpretations are also subject to our general terms and conditions set out in our current Price Schedule.

Comments

THANK YOU FOR USING ELI WIRELINE SERVICES, HAYS, KS. (785) 628-6395

DIRECTIONS:

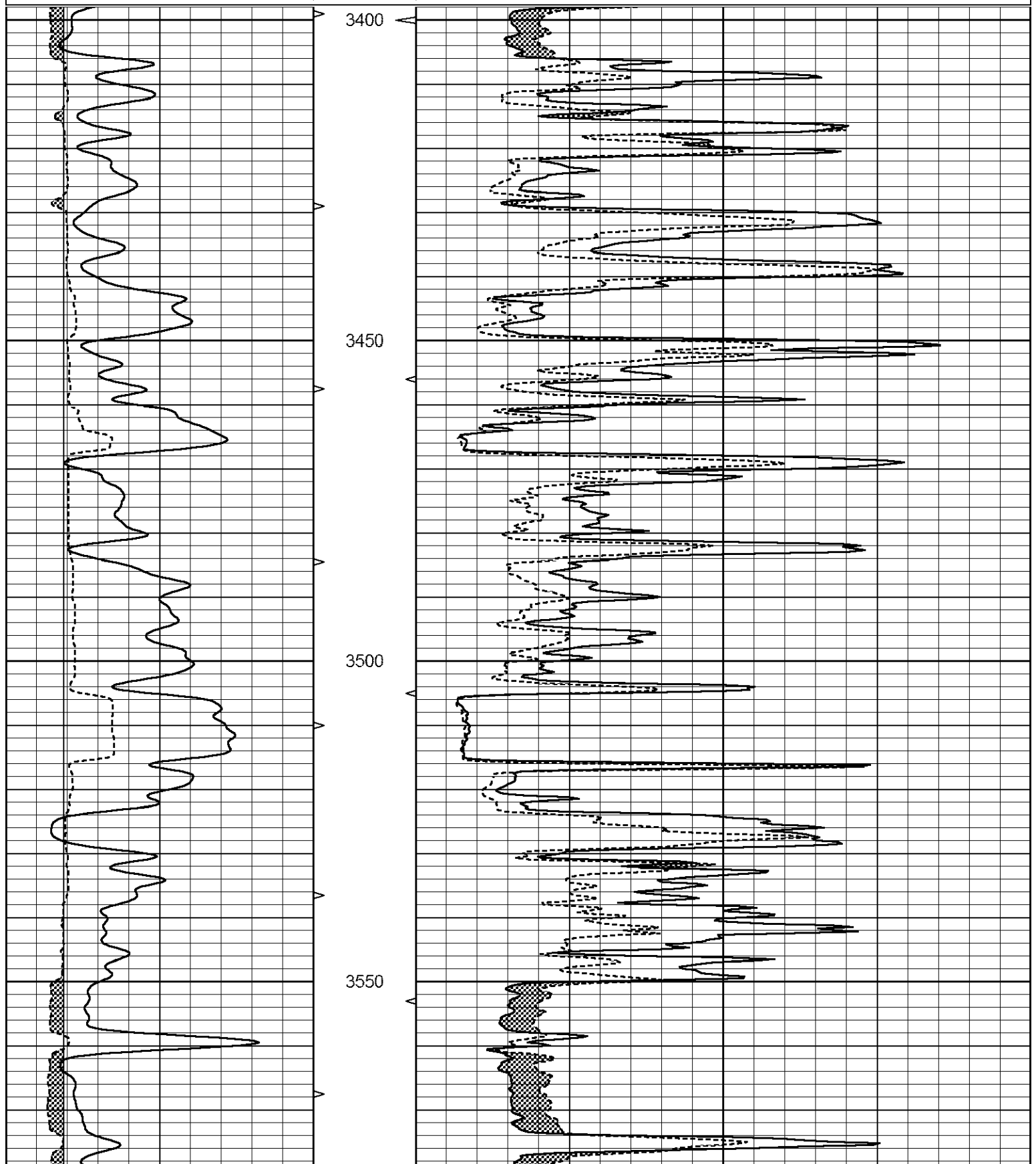
FROM NESS CITY, KANSAS GO 10 MILES WEST ON HIGHWAY 96 TO ROAD H, THEN 6 MILES NORTH TO 195TH ROAD, 2 MILES EAST TO DEAD END AND NORTH INTO

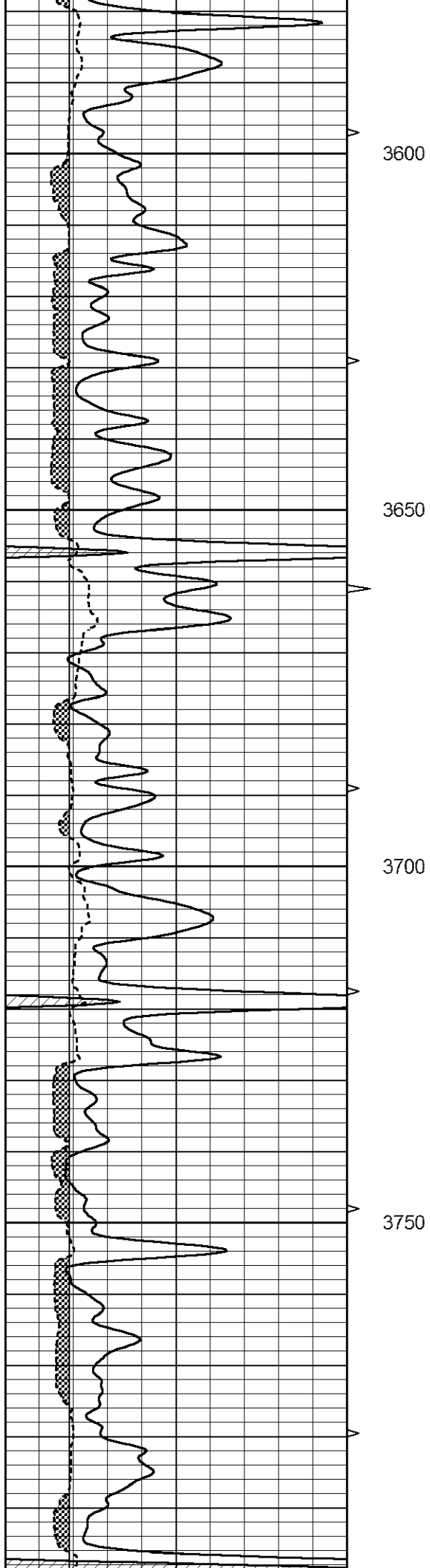


MAIN SECTION

Database File 6753ddn.db
 Dataset Pathname pass6.M
 Presentation Format _micro
 Dataset Creation Sun Jul 03 18:08:53 2022
 Charted by Depth in Feet scaled 1:240

0	GAMMA RAY (GAPI)	150	ABHV	0	MEL1.5 (Ohm-m)	40
6	CALIPER (in)	16	10 (ft3)	0 0	MEL2.0 (Ohm-m)	40
			TBHV			
			0 (ft3)	10		



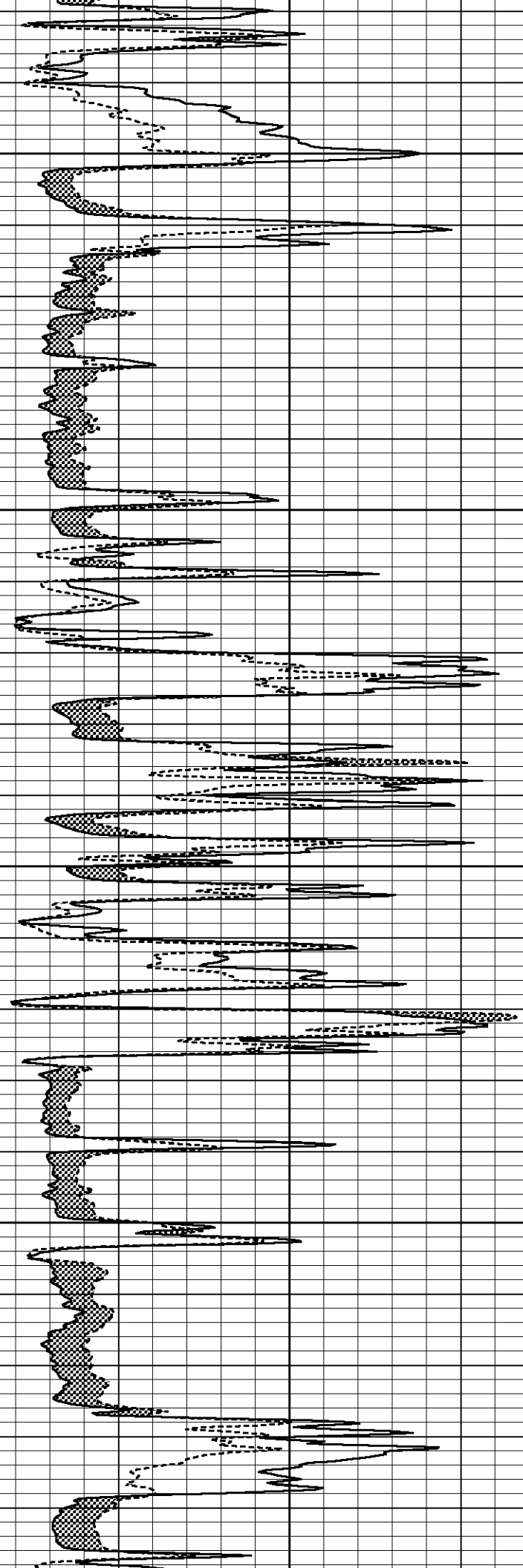


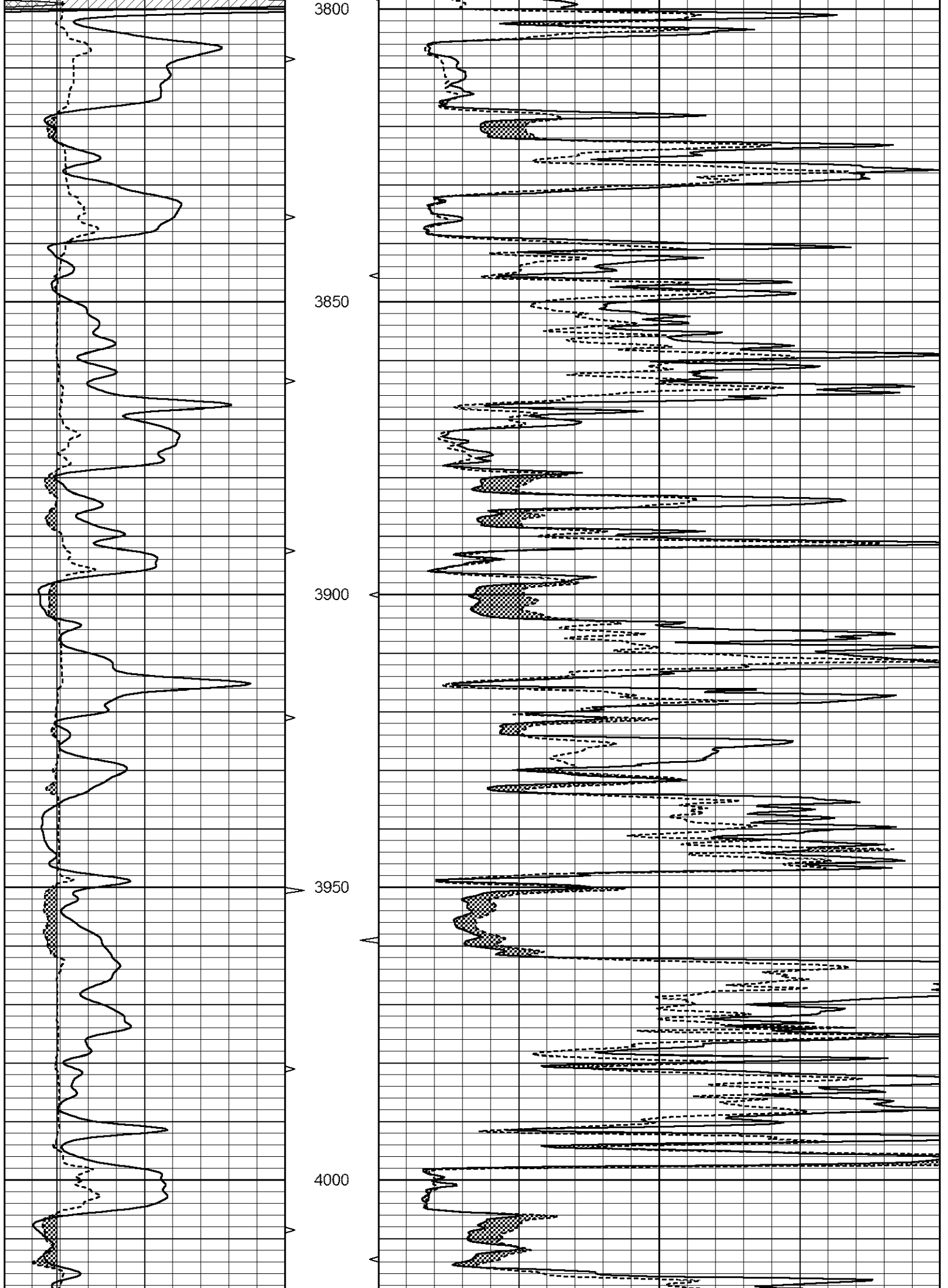
3600

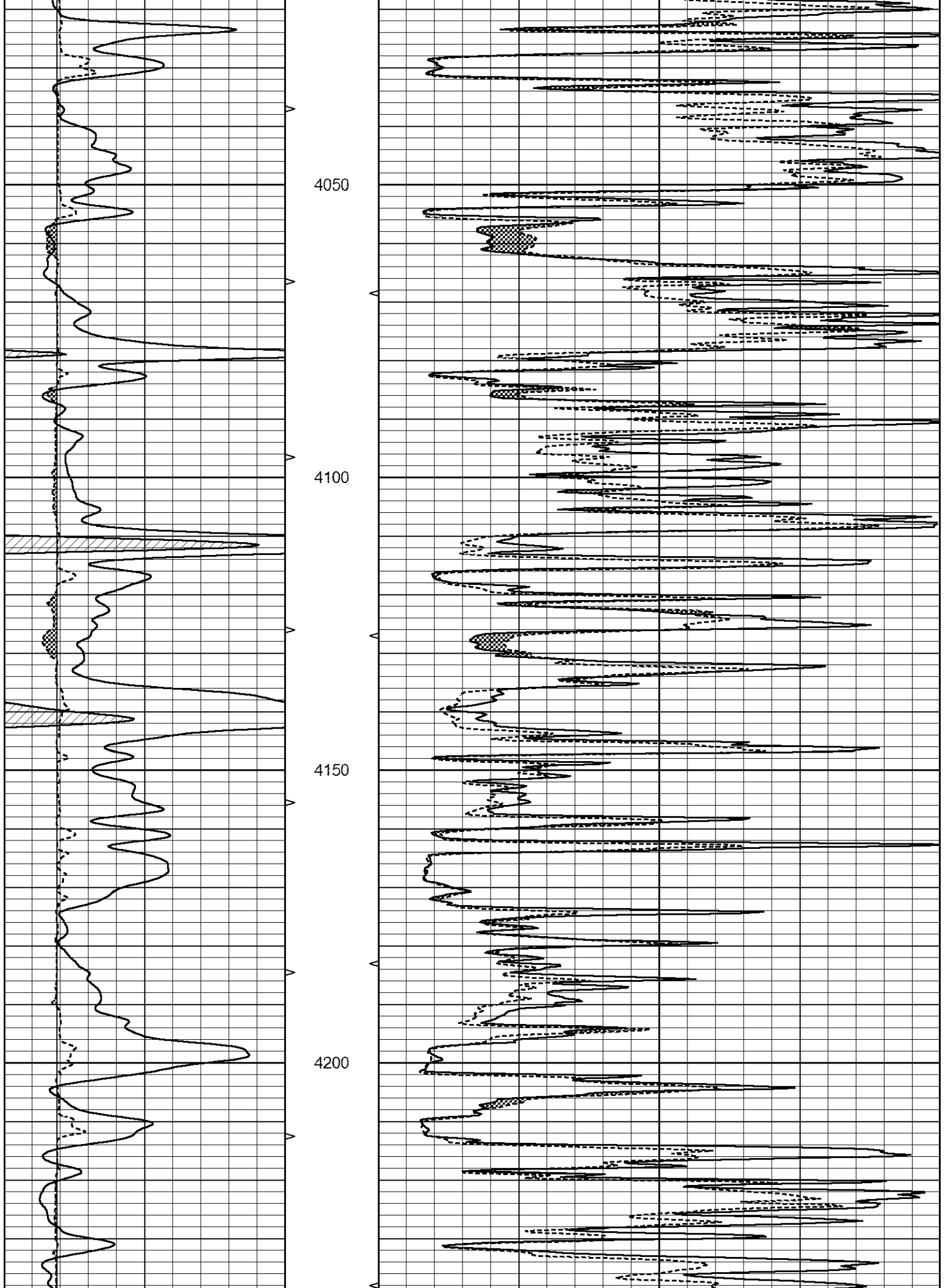
3650

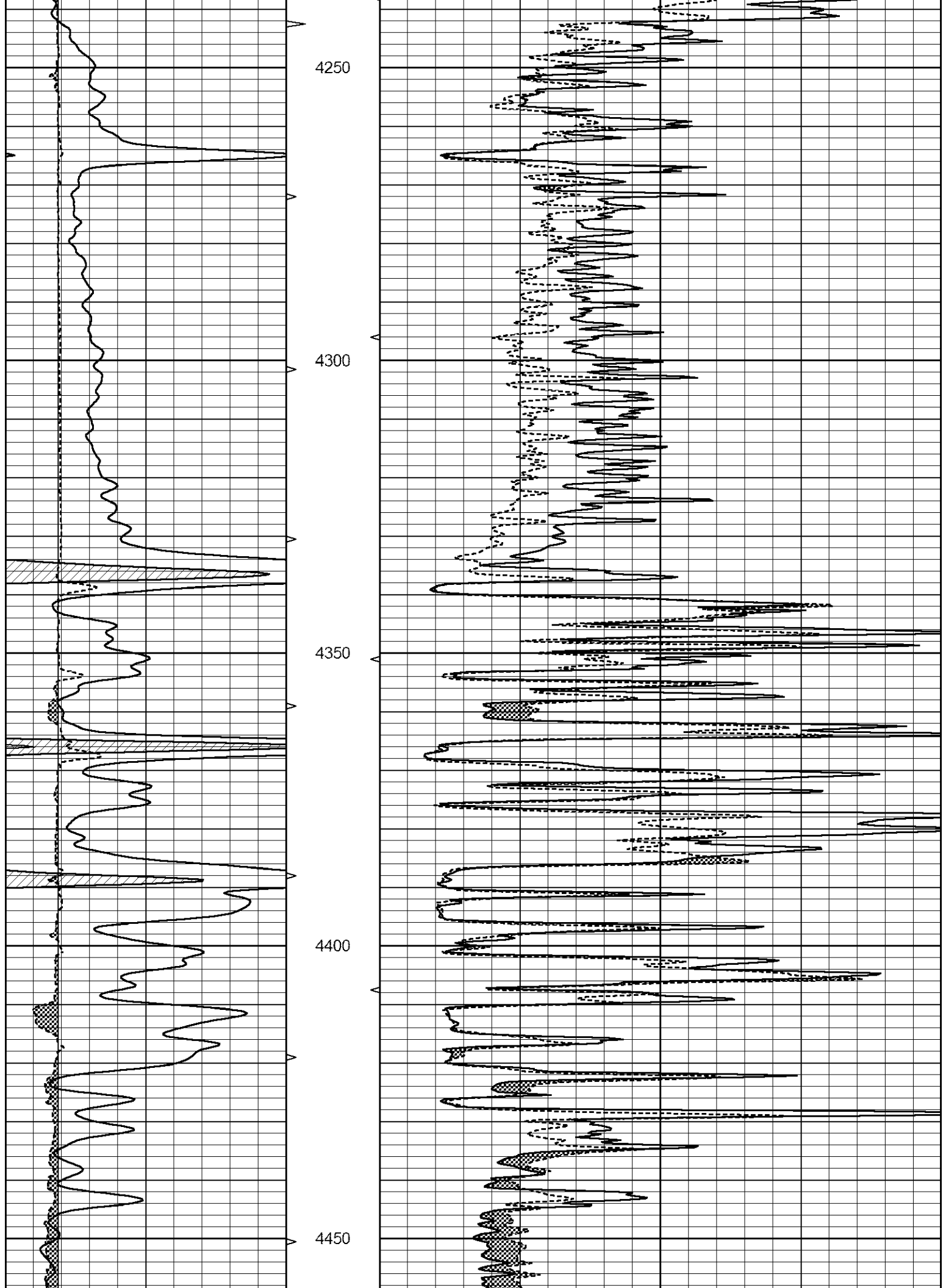
3700

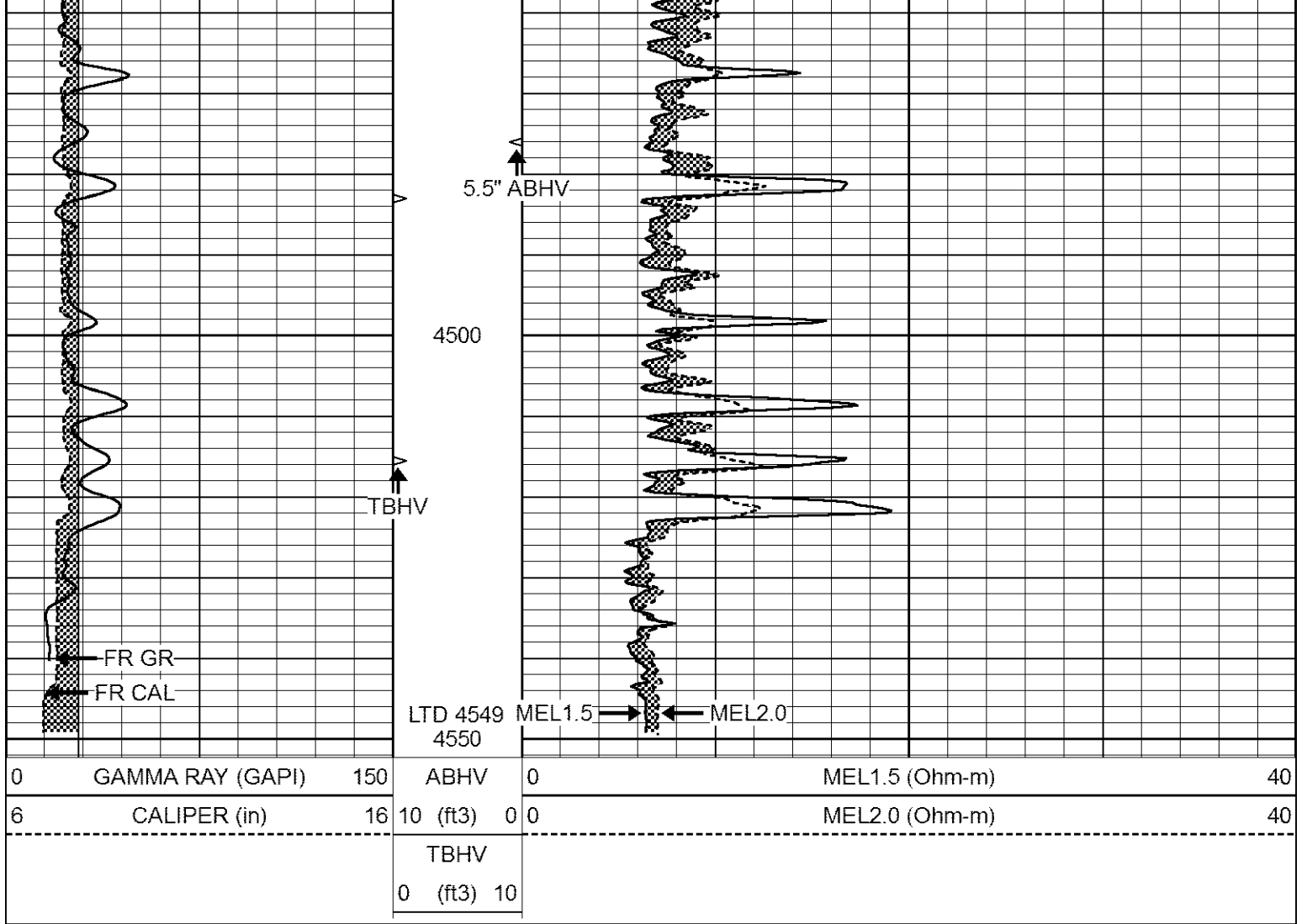
3750





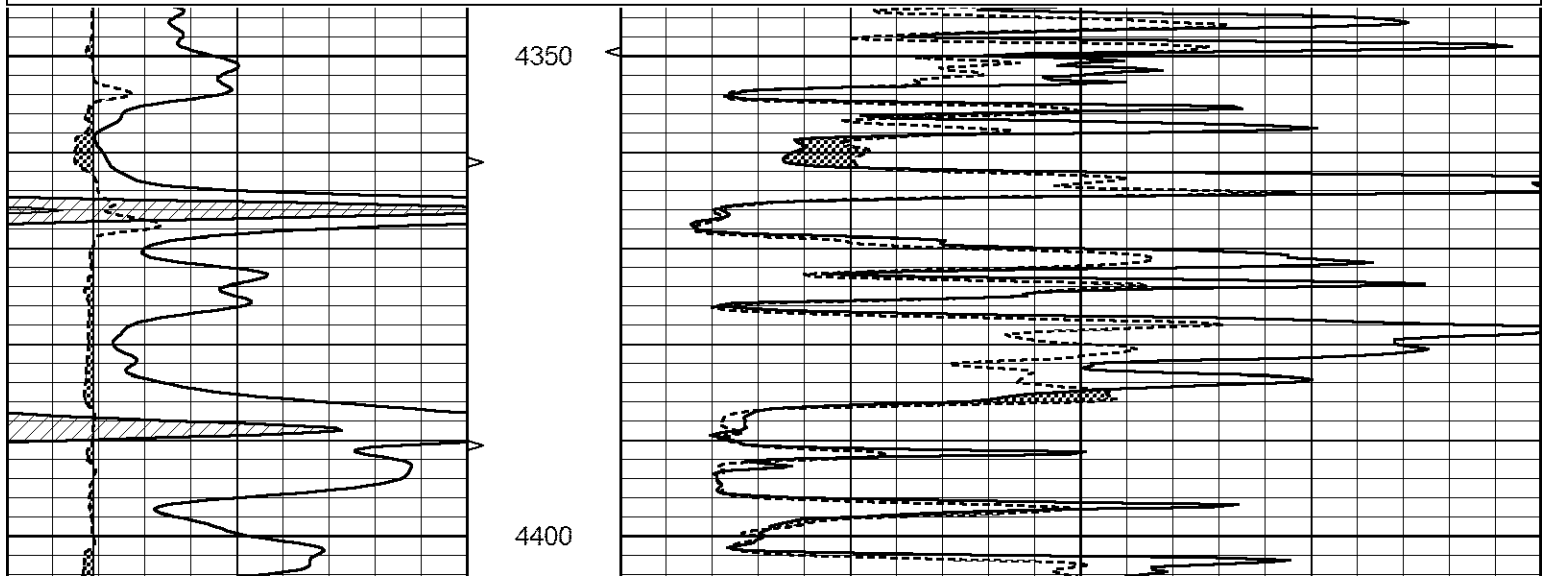


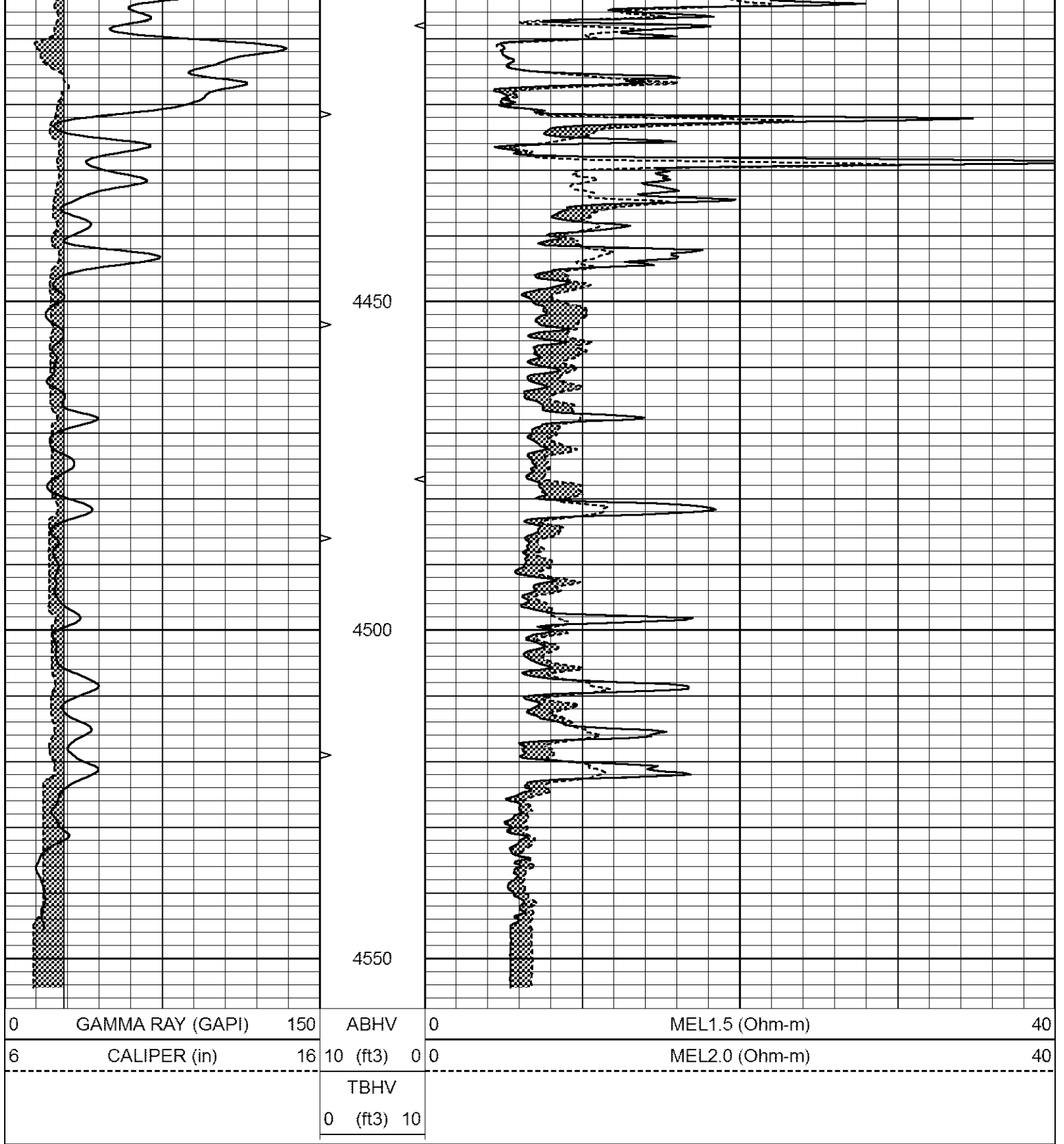




Database File	6753ddn.db
Dataset Pathname	pass5.1R
Presentation Format	_micro
Dataset Creation	Sun Jul 03 18:15:14 2022
Charted by	Depth in Feet scaled 1:240

0	GAMMA RAY (GAPI)	150	ABHV	0	MEL1.5 (Ohm-m)	40
6	CALIPER (in)	16	10 (ft3) 0 0	0	MEL2.0 (Ohm-m)	40
			TBHV			
			0 (ft3) 10			





Calibration Report

Database File 6753ddn.db
 Dataset Pathname pass6.M
 Dataset Creation Sun Jul 03 18:08:53 2022

MICRO_USR Calibration Report

Serial Number: 070910
 Tool Model: Probel
 Performed: Thu Jun 23 15:00:37 2022

Caliper Calibration: Gain=7.212 Offset=2.700

References	Low Cal	High Cal						
Readings	8.000	14.000						
	0.725	1.557						
1.5" Calibration:	Gain=30.000	Offset=1.600						
References	Low Cal	High Cal						
Readings	0.000	20.000						
	0.004	1.335						
2" Calibration:	Gain=46.500	Offset=1.200						
References	Low Cal	High Cal						
Readings	0.000	20.000						
	0.004	1.029						
Microlog Calibration Report								
Serial-Model: Performed:			070910-ProbeL (Not Performed)					
	Readings			References			Results	
	Zero	Cal		Zero	Cal		m	b
Normal	0.0000	1.0000	V	0.0000	1.0000	Ohm-m	1.0000	0.0000
Inverse	0.0000	1.0000	V	0.0000	1.0000	Ohm-m	1.0000	0.0000
Caliper	0.0000	1.0000	V	0.0000	1.0000	in	1.0000	0.0000
Gamma Ray Calibration Report								
Serial Number:	070558							
Tool Model:	Probe1							
Performed:	Sat Jul 02 05:55:58 2022							
Calibrator Value:	1.0	GAPI						
Background Reading:	0.0	cps						
Calibrator Reading:	1.0	cps						
Sensitivity:	0.2600	GAPI/cps						