



DUAL INDUCTION LOG

Company	PALOMINO PETROLEUM, INC.	
Well	SPACEMAN #1	
Field	ALDRICH NORTHEAST	
County	NESS	State KANSAS
Location:	API #: 15-135-26181-0000	Other Services CDL/CNL MEL
Permanent Datum	GROUND LEVEL	Elevation
Log Measured From	KELLY BUSHING 5' A.G.L	K.B. 2528
Drilling Measured From	KELLY BUSHING	D.F. 2526
		G.L. 2523

Date	7/3/22
Run Number	ONE
Depth Driller	4548
Depth Logger	4549
Bottom Logged Interval	4547
Top Log Interval	00
Casing Driller	8 5/8" @ 219
Casing Logger	219
Bit Size	7 7/8
Type Fluid in Hole	CHEMICAL MUD
Density / Viscosity	9.5/57
PH / Fluid Loss	10.0/6.8
Source of Sample	FLOWLINE
Rm @ Meas. Temp	.950 @ 80F
Rmt @ Meas. Temp	.713 @ 80F
Rmc @ Meas. Temp	1.14 @ 80F
Source of Rmf / Rmc	MEASUREMENT
Rm @ BHT	.628 @ 121F
Time Circulation Stopped	2.5 HOURS
Time Logger on Bottom	3.30 P.M.
Maximum Recorded Temperature	121F
Equipment Number	3802
Location	HAYS, KANSAS
Recorded By	COLE ROBBEN
Witnessed By	KIM SHOEMAKER

<<< Fold Here >>>

All interpretations are opinions based on inferences from electrical or other measurements and we cannot and do not guarantee the accuracy or correctness of any interpretation, and we shall not, except in the case of gross or willful negligence on our part, be liable or responsible for any loss, costs, damages, or expenses incurred or sustained by anyone resulting from any interpretation made by any of our officers, agents or employees. These interpretations are also subject to our general terms and conditions set out in our current Price Schedule.

Comments

THANK YOU FOR USING ELI WIRELINE SERVICES, HAYS, KS. (785) 628-6395

DIRECTIONS:

FROM NESS CITY, KANSAS GO 10 MILES WEST ON HIGHWAY 96 TO ROAD H, THEN 6 MILES NORTH TO 195TH ROAD, 2 MILES EAST TO DEAD END AND NORTH INTO

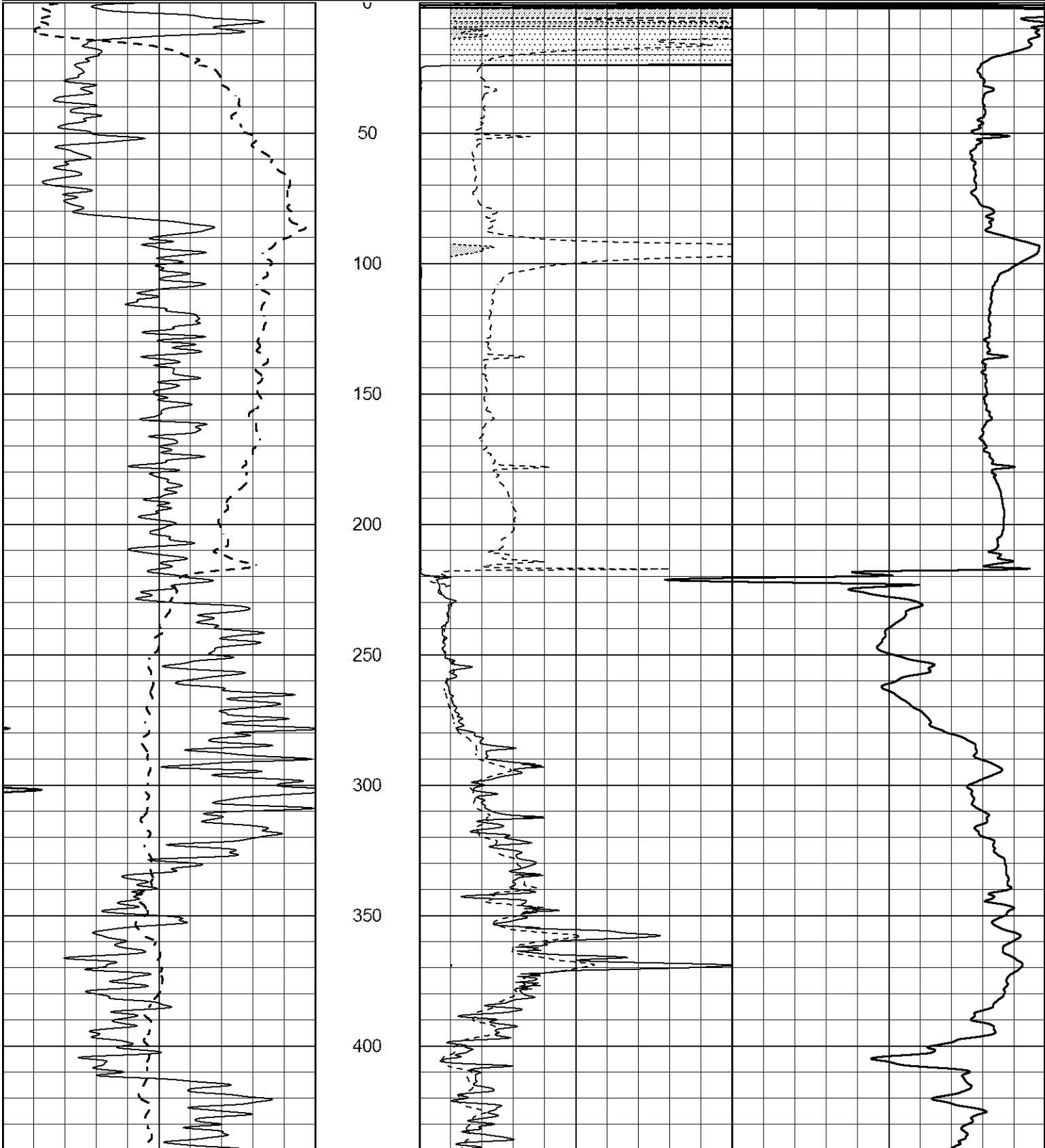


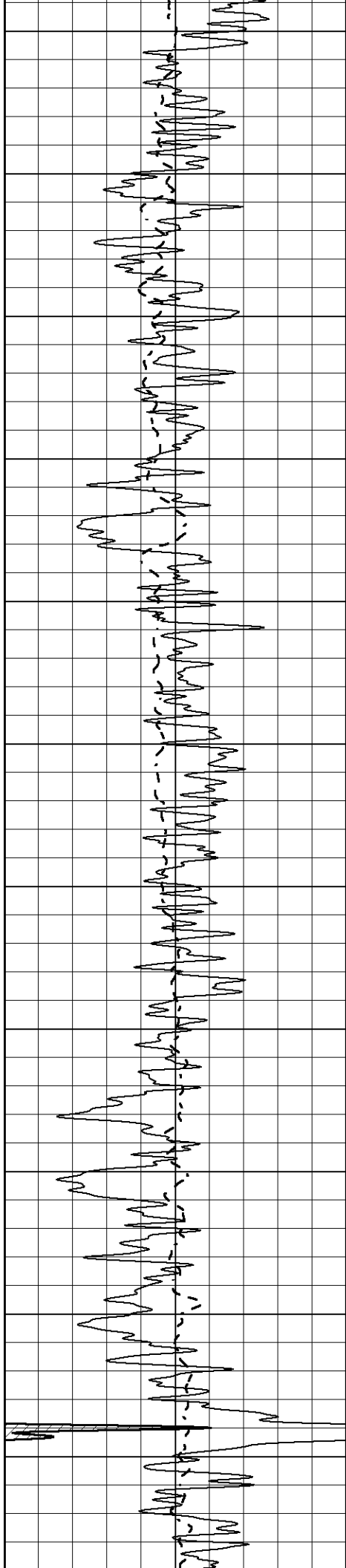
MAIN SECTION

Database File 6753ddn.db
 Dataset Pathname pass3.M
 Presentation Format _dil2
 Dataset Creation Sun Jul 03 17:01:48 2022
 Charted by Depth in Feet scaled 1:600

0 Gamma Ray (GAPI) 150
 -100 SP (mV) 100

1000 CILD (mmho/m) 0
 0 RLL3 (Ohm-m) 50
 0 Deep Induction (Ohm-m) 50
 50 RILD X10 (Ohm-m) 500
 50 RLL3 X10 (Ohm-m) 500





450

500

550

600

650

700

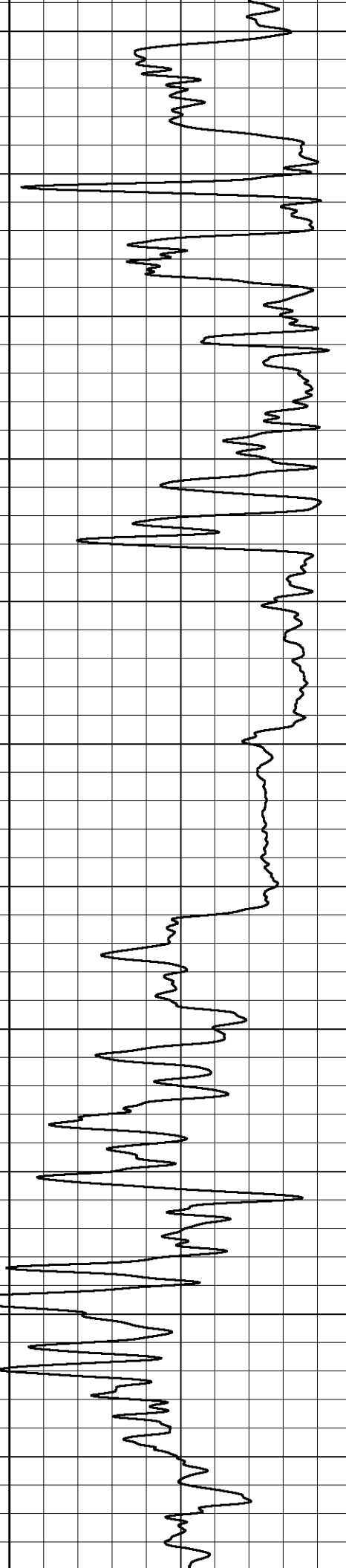
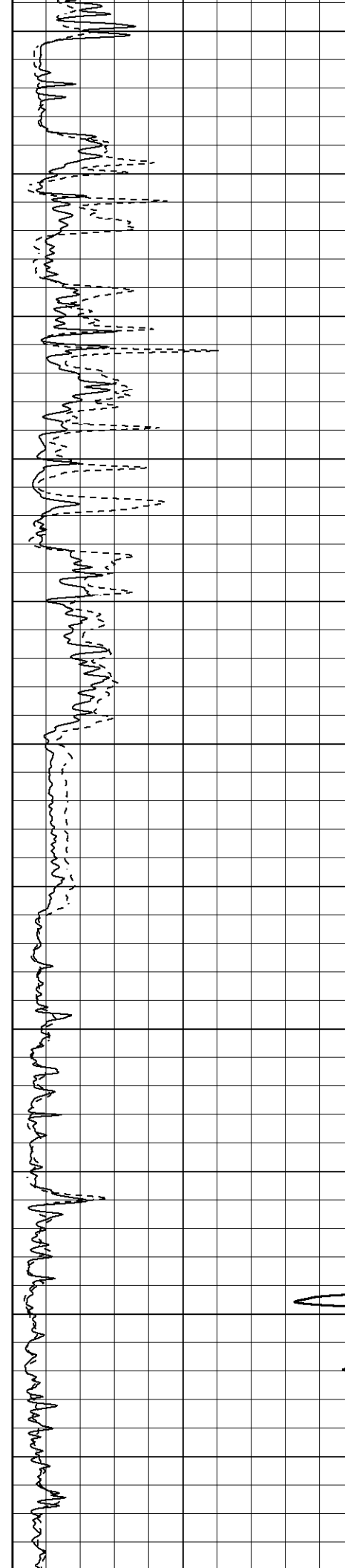
750

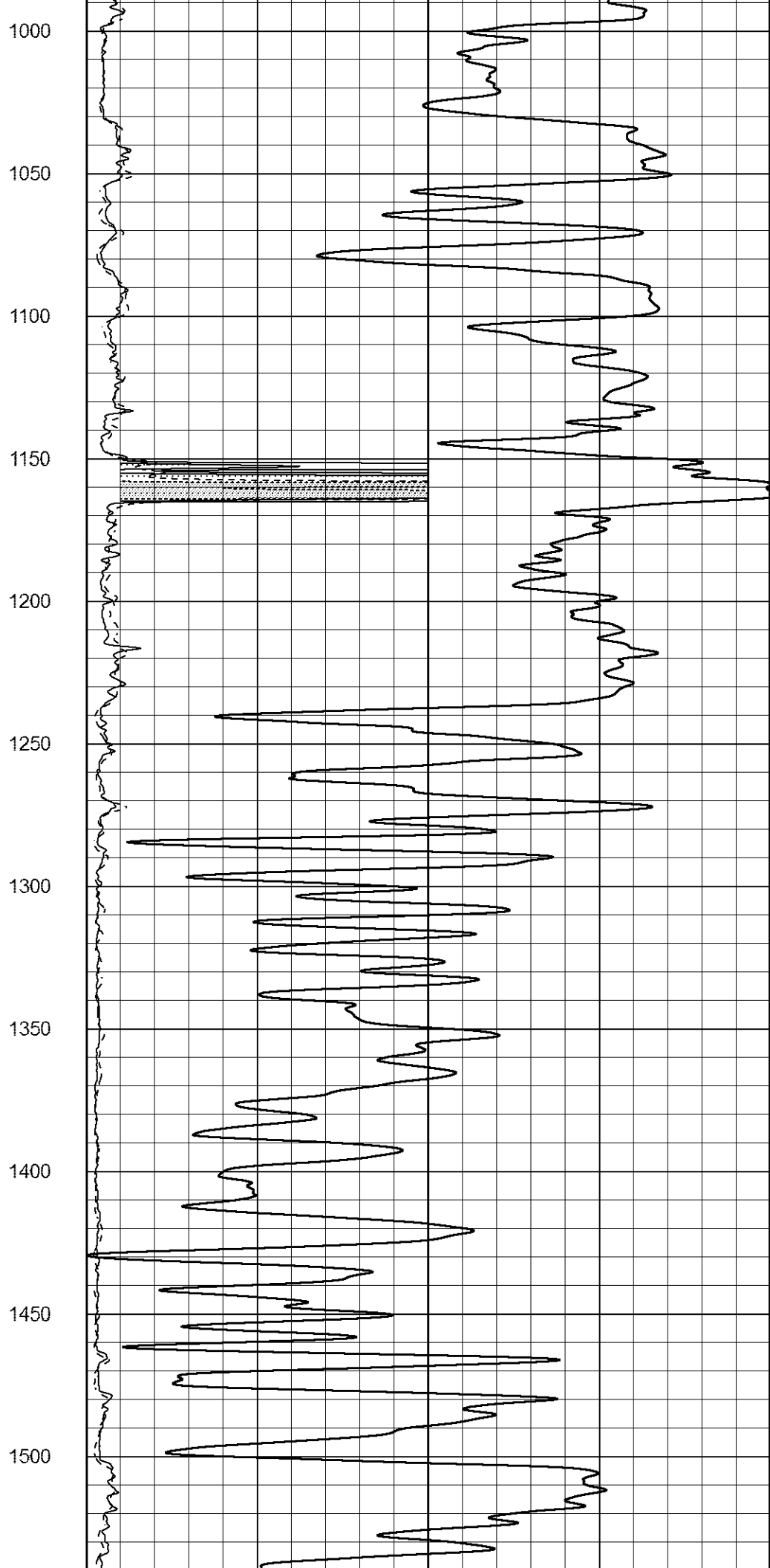
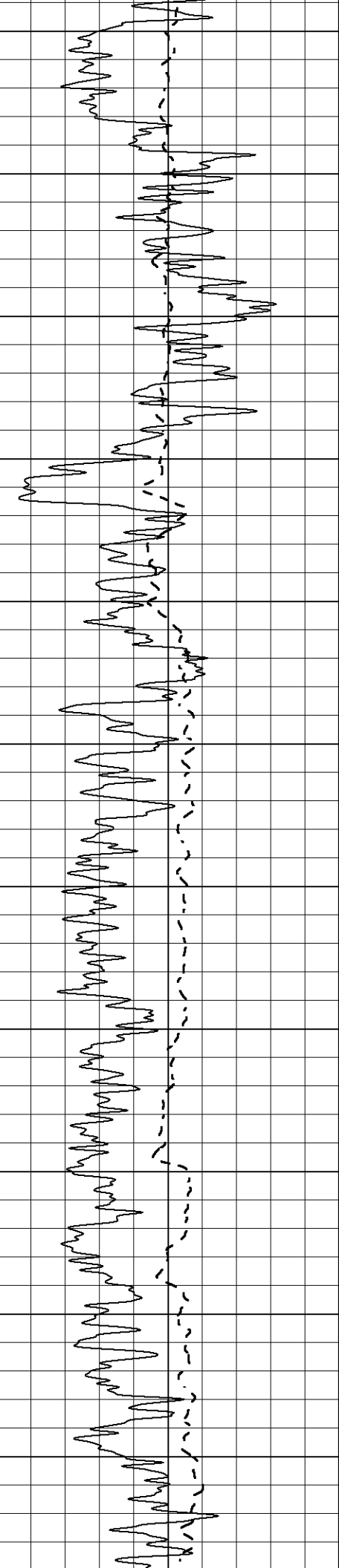
800

850

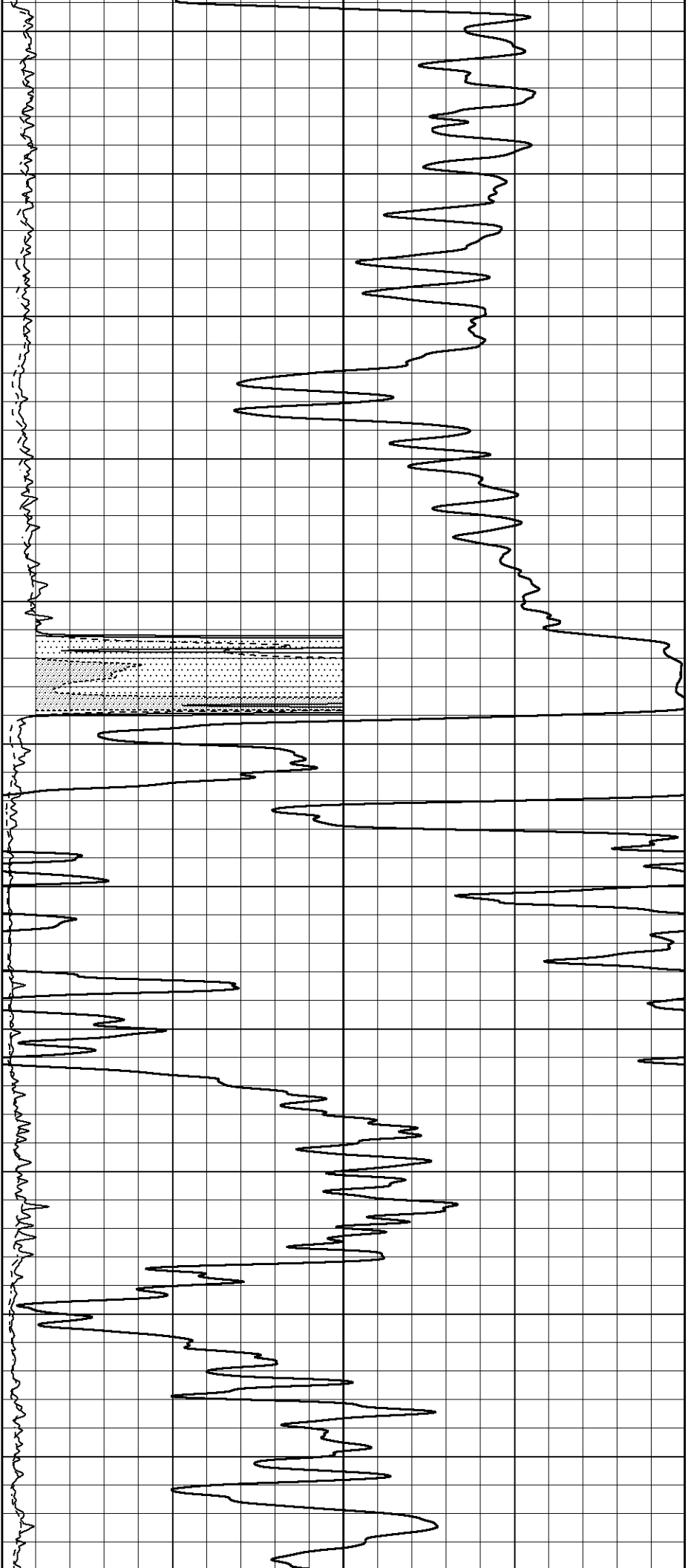
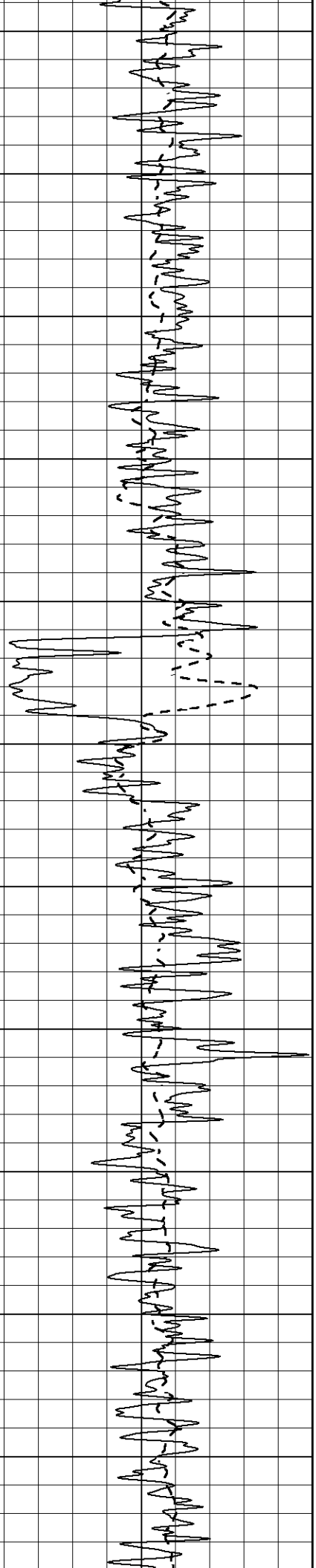
900

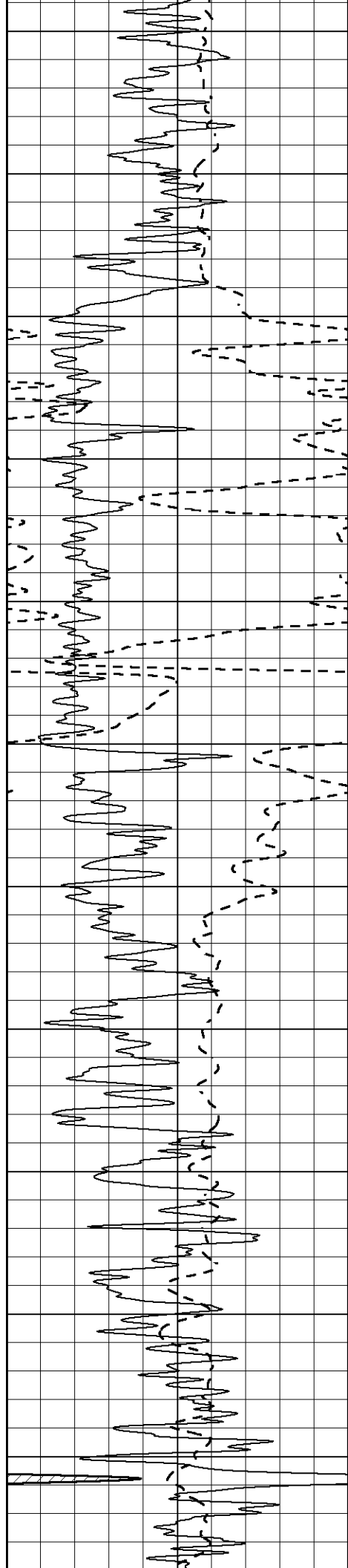
950



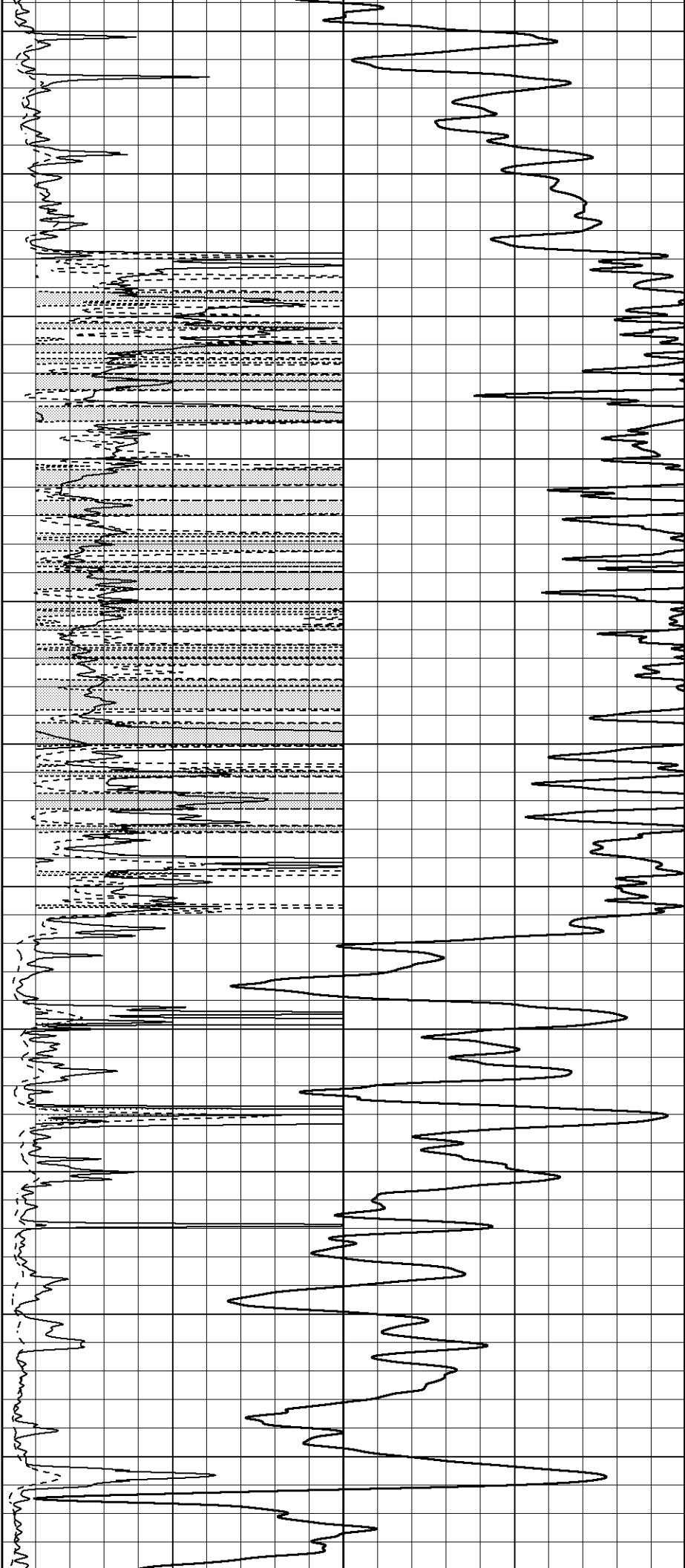


1550
1600
1650
1700
1750
1800
1850
1900
1950
2000
2050

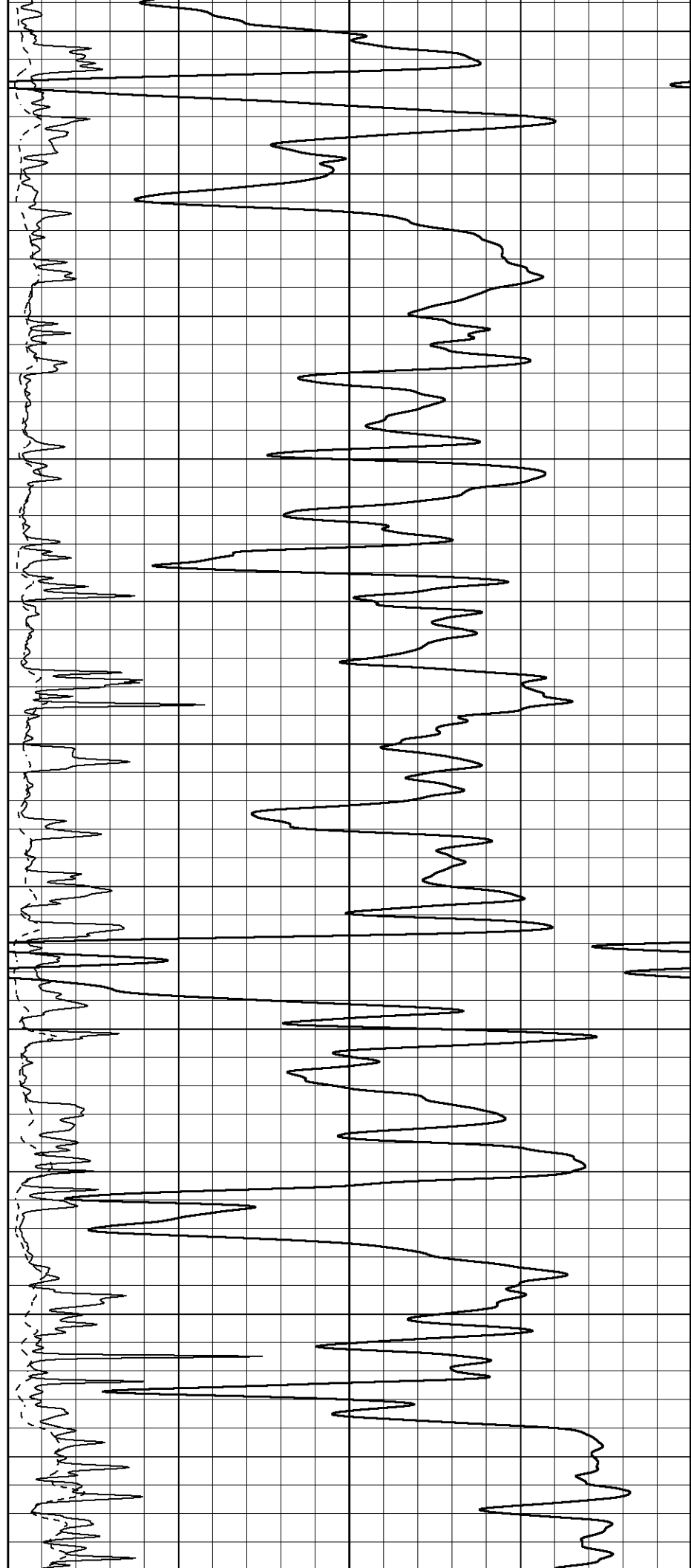




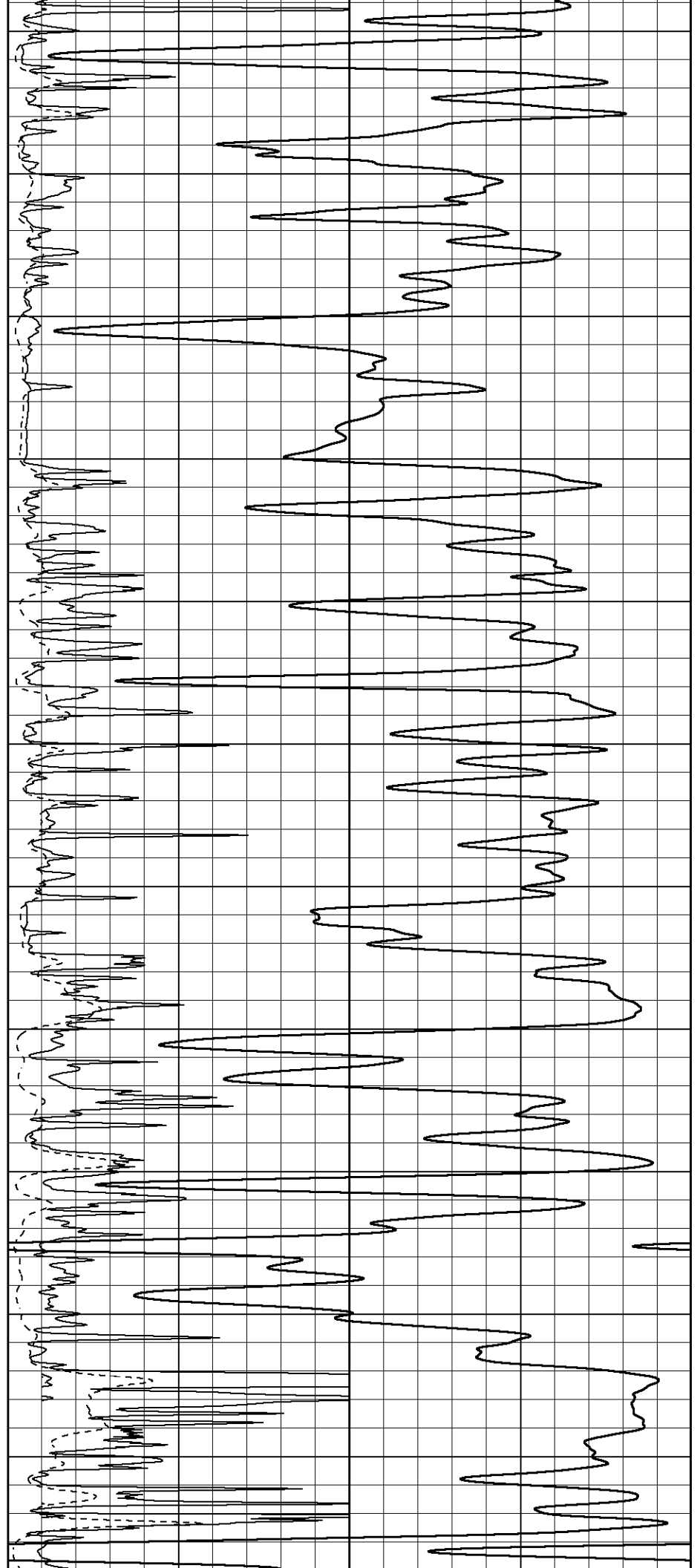
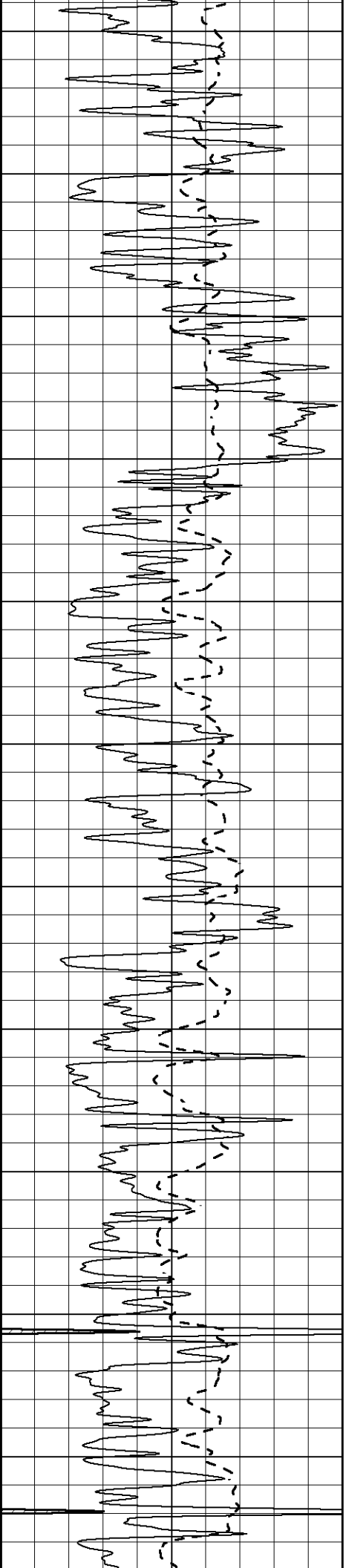
2100
2150
2200
2250
2300
2350
2400
2450
2500
2550
2600

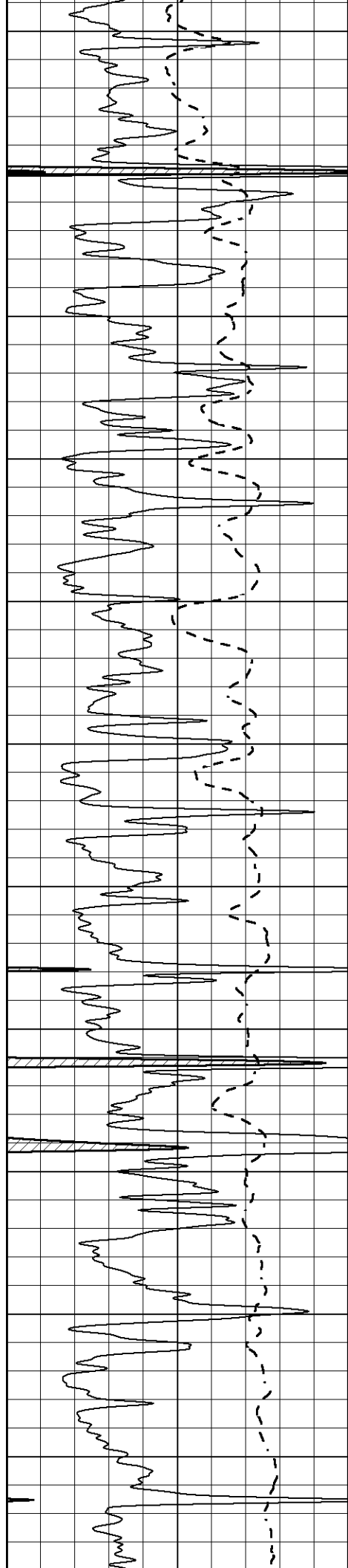


2650
2700
2750
2800
2850
2900
2950
3000
3050
3100
3150

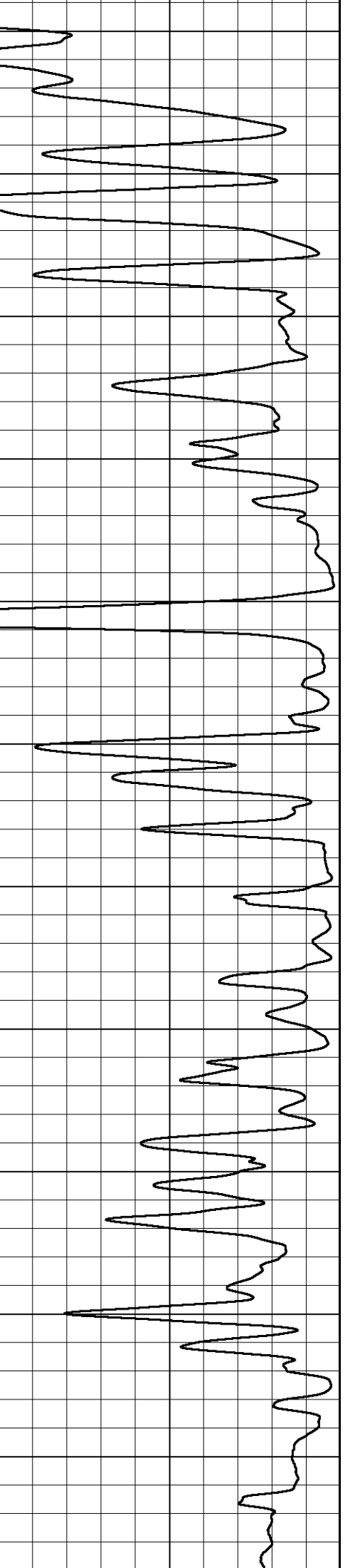
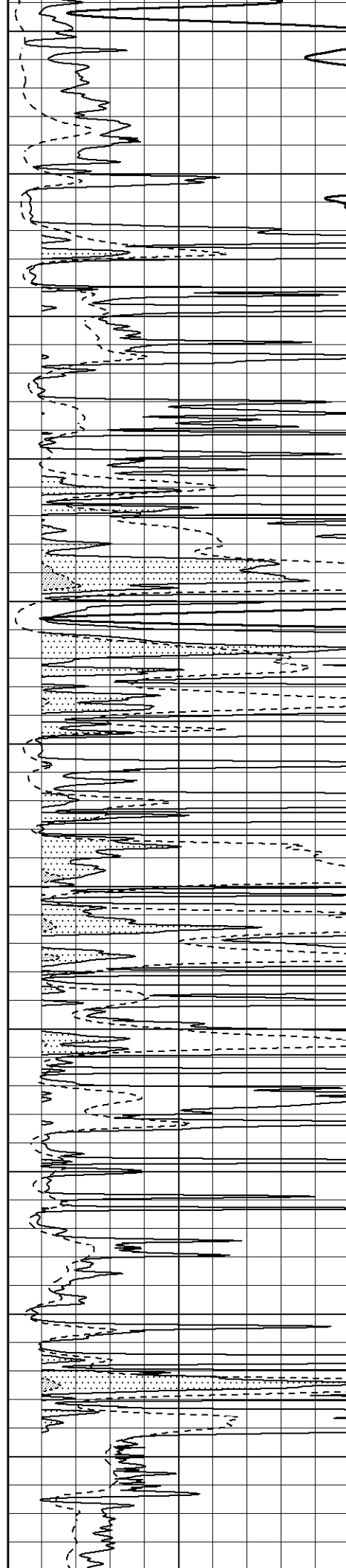


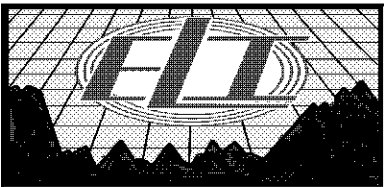
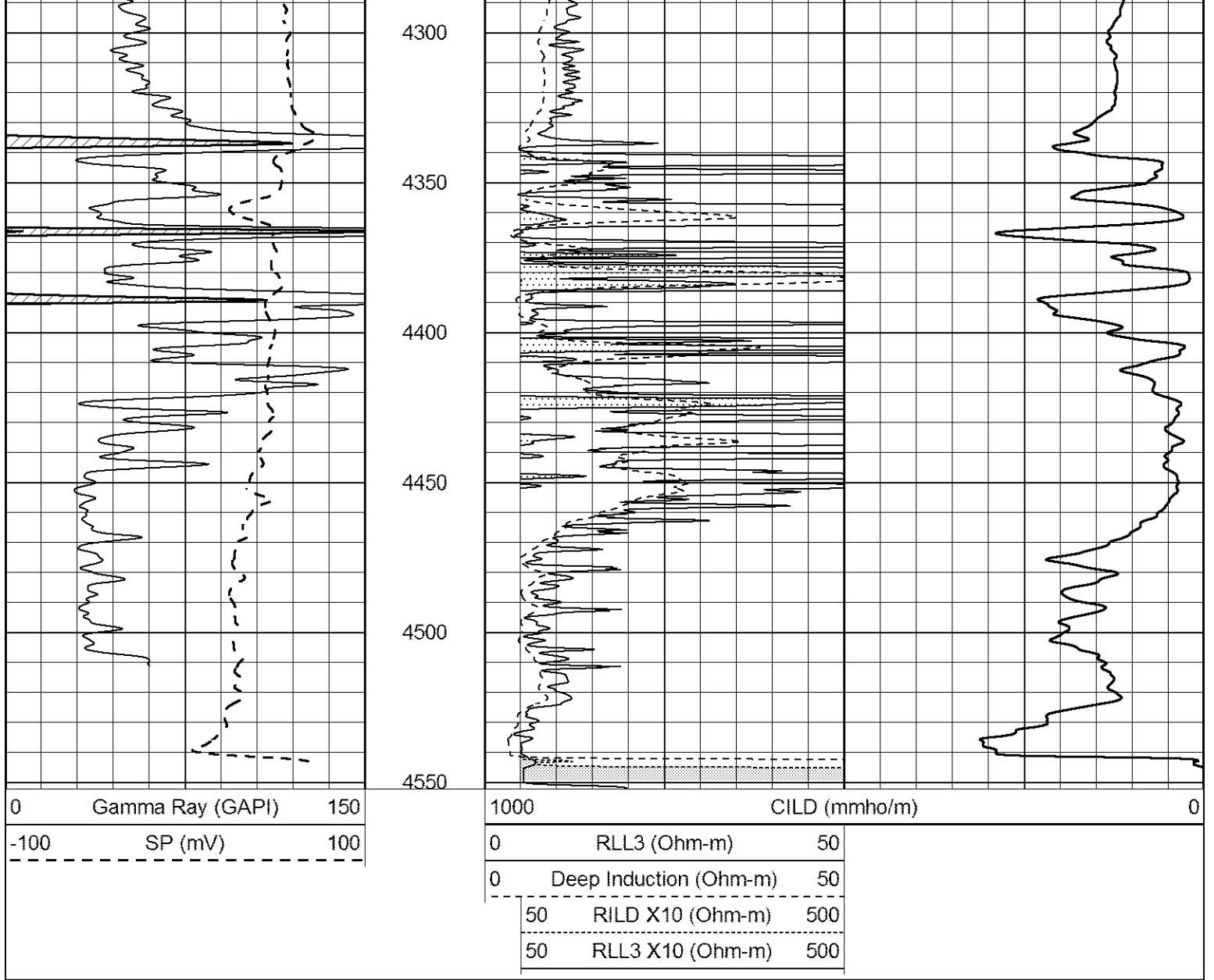
3200
3250
3300
3350
3400
3450
3500
3550
3600
3650
3700





3750
3800
3850
3900
3950
4000
4050
4100
4150
4200
4250



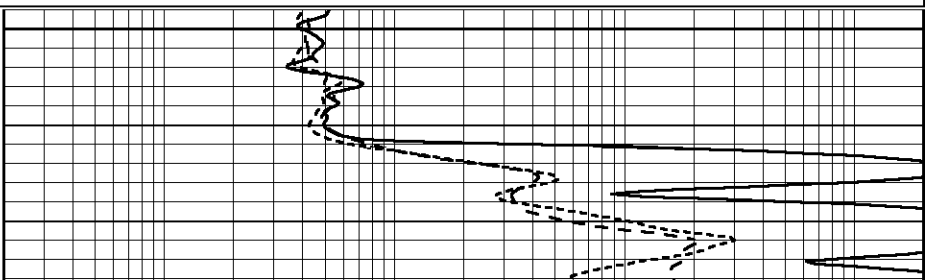
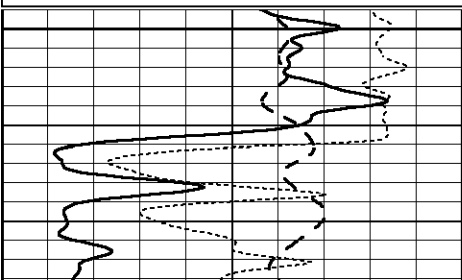


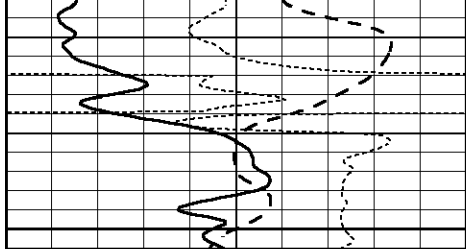
ANHYDRITE

Database File 6753ddn.db
 Dataset Pathname pass3.A
 Presentation Format _dil
 Dataset Creation Sun Jul 03 16:48:42 2022
 Charted by Depth in Feet scaled 1:240

0	GAMMA RAY (GAPI)	150
-100	SP (mV)	100
-250	Rxo/Rf	50

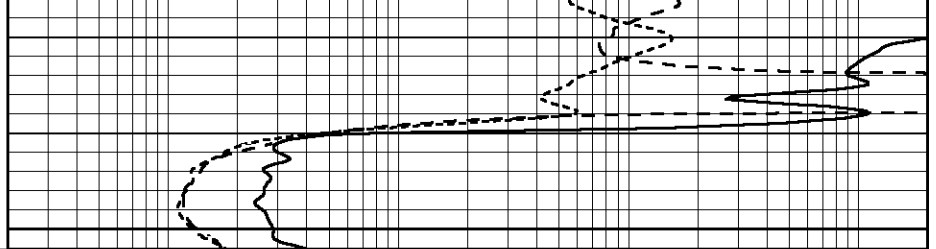
0.2	SHALLOW GUARD (Ohm-m)	2000
0.2	MEDIUM INDUCTION (Ohm-m)	2000
0.2	DEEP INDUCTION (Ohm-m)	2000



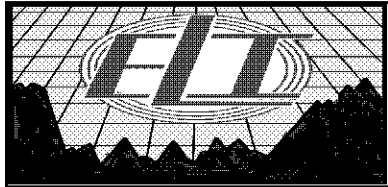


1800

0	GAMMA RAY (GAPI)	150
-100	SP (mV)	100
-250	Rxo/Rt	50



0.2	SHALLOW GUARD (Ohm-m)	2000
0.2	MEDIUM INDUCTION (Ohm-m)	2000
0.2	DEEP INDUCTION (Ohm-m)	2000

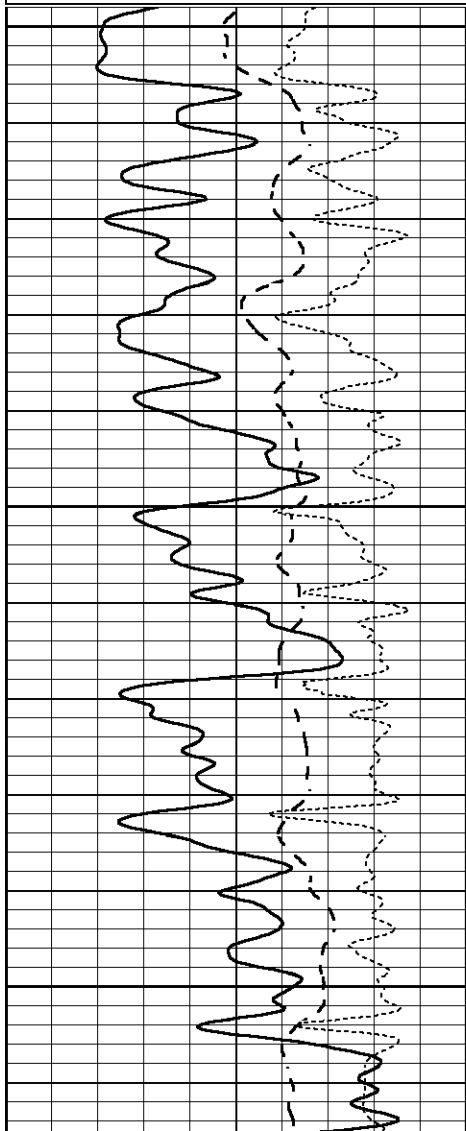


MAIN SECTION

Database File 6753ddn.db
 Dataset Pathname pass3.M
 Presentation Format _dil
 Dataset Creation Sun Jul 03 17:01:48 2022
 Charted by Depth in Feet scaled 1:240

0	GAMMA RAY (GAPI)	150
-100	SP (mV)	100
-250	Rxo/Rt	50

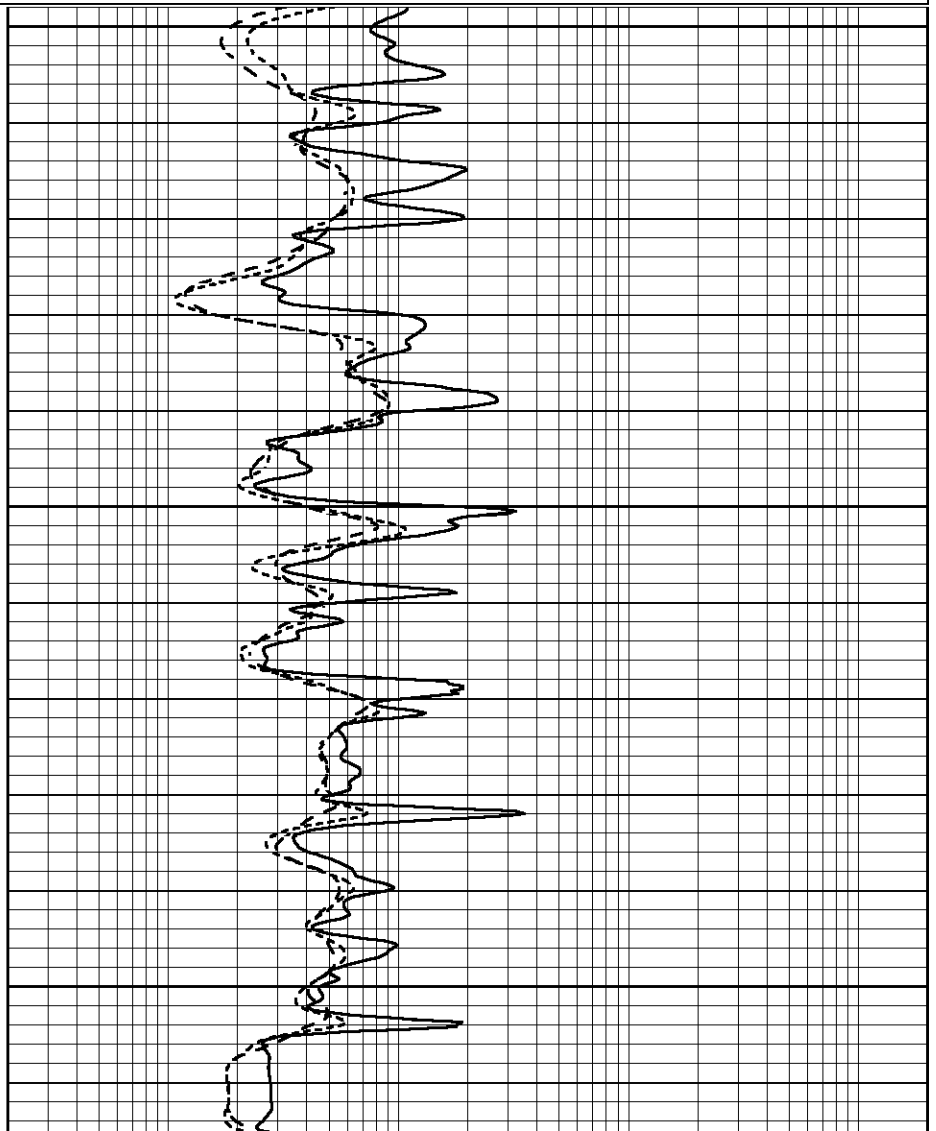
0.2	SHALLOW GUARD (Ohm-m)	2000
0.2	MEDIUM INDUCTION (Ohm-m)	2000
0.2	DEEP INDUCTION (Ohm-m)	2000

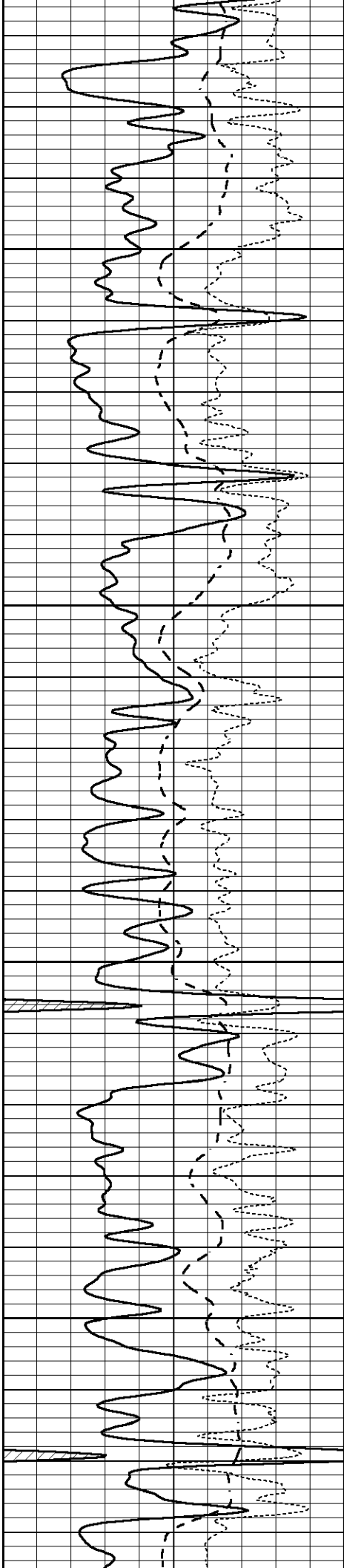


3400

3450

3500



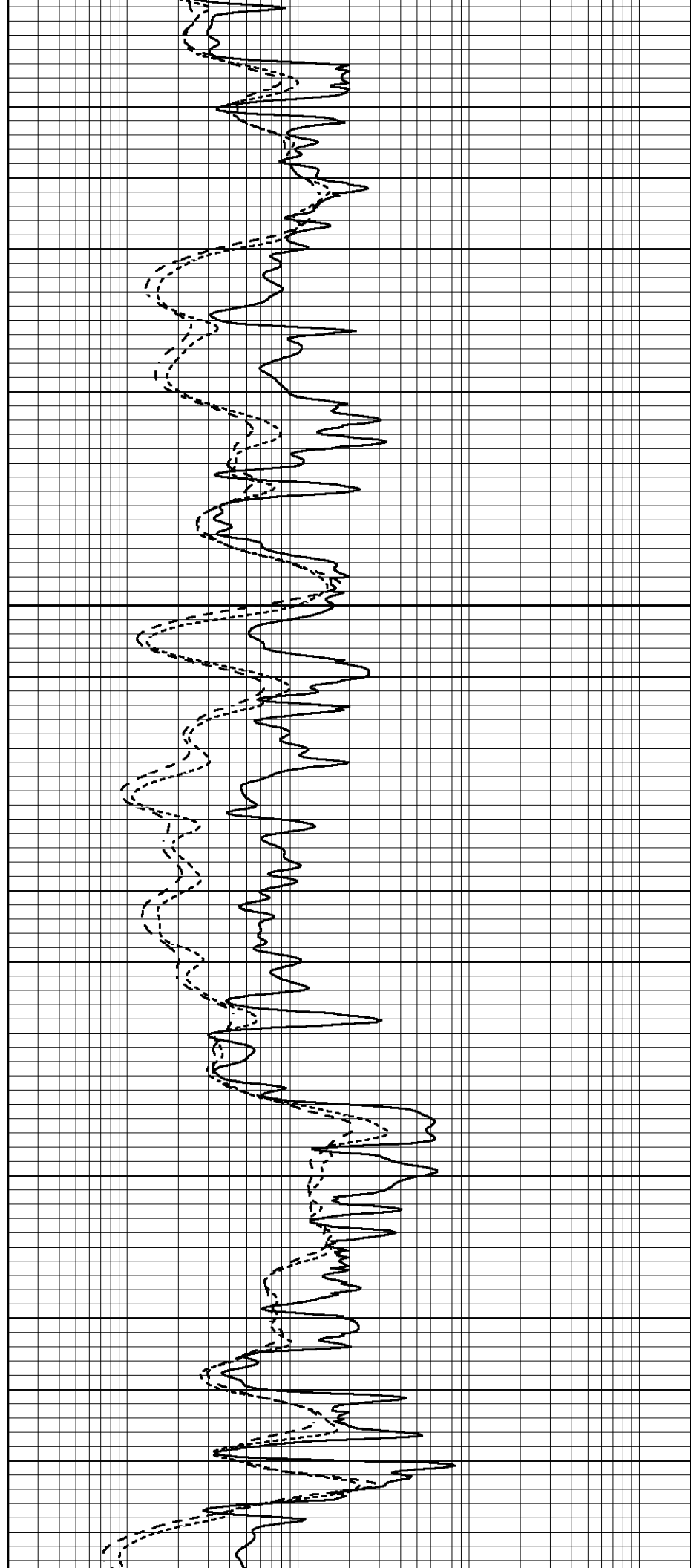


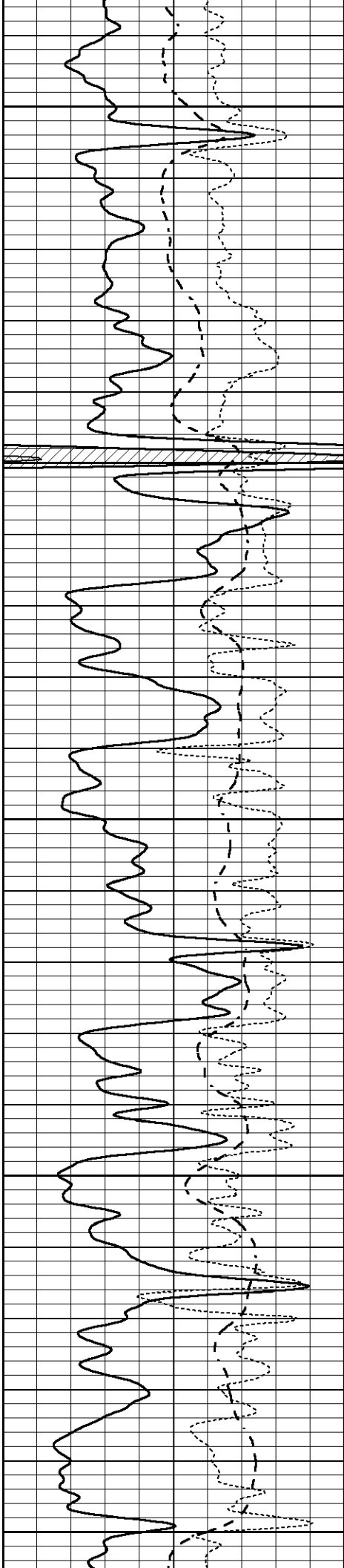
3550

3600

3650

3700





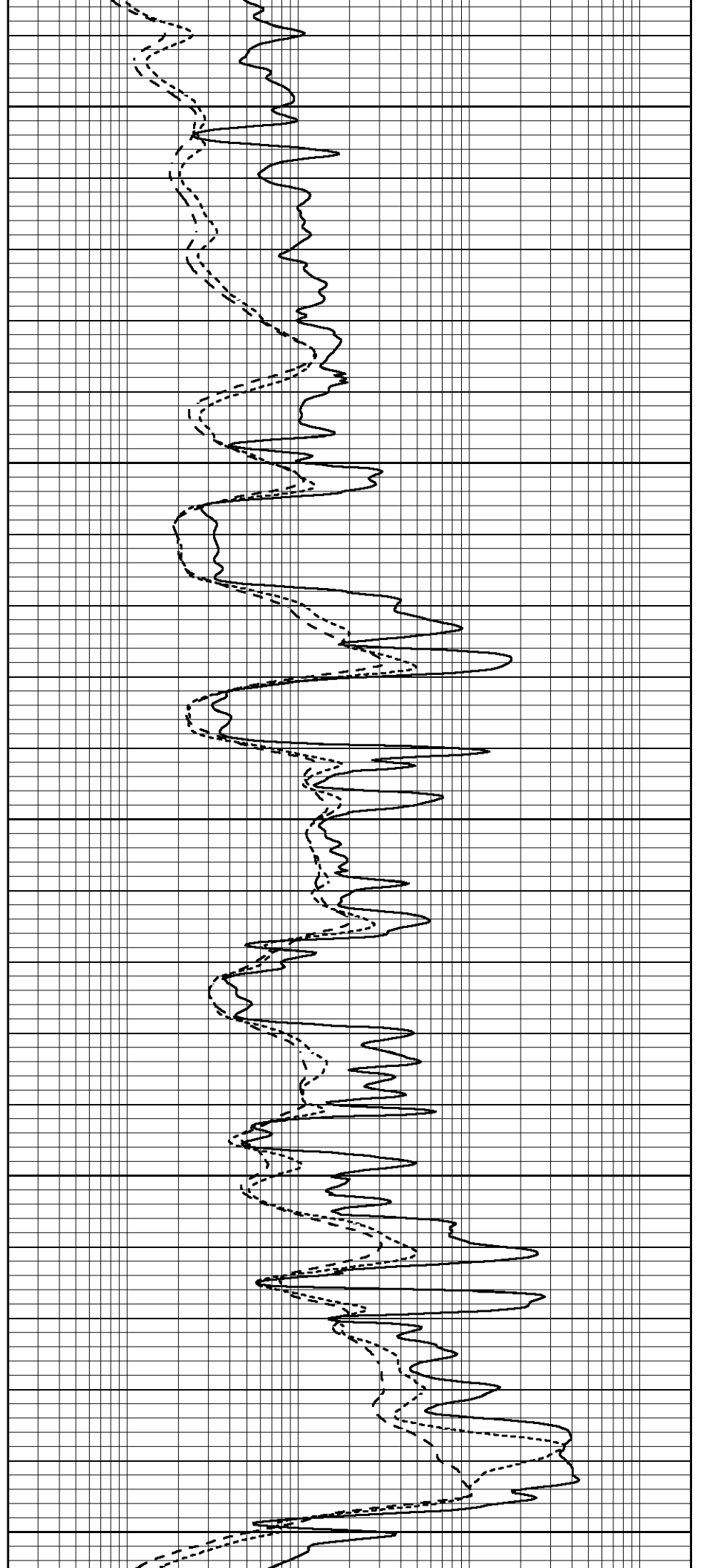
3750

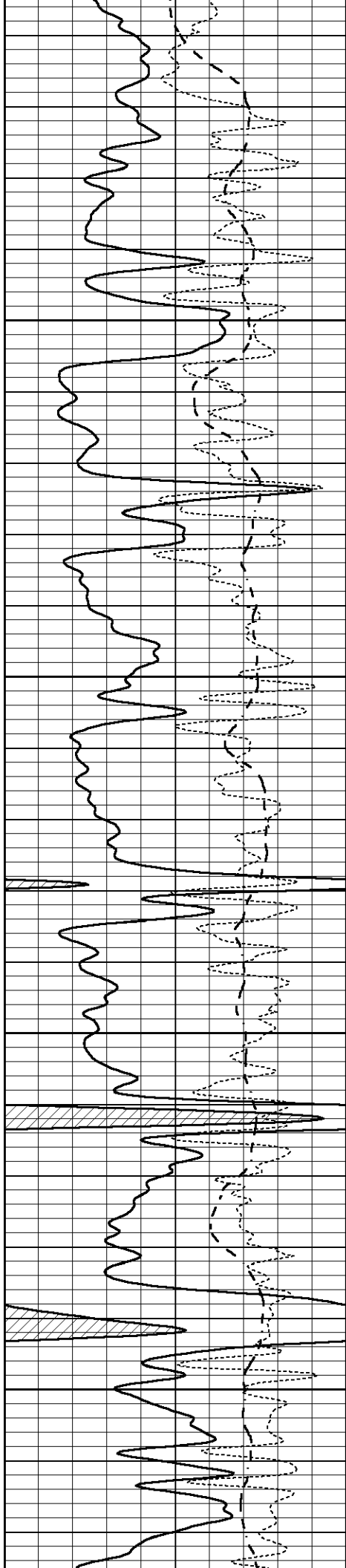
3800

3850

3900

3950



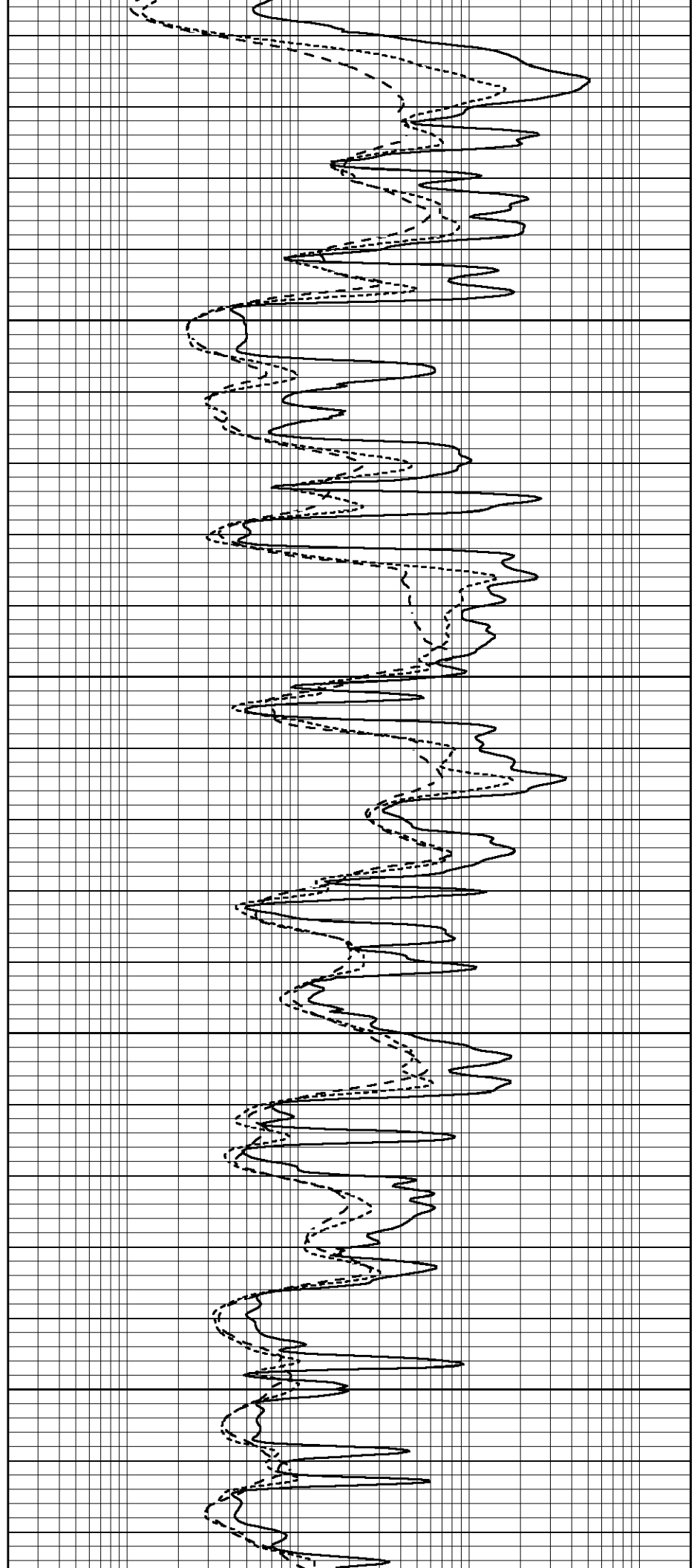


4000

4050

4100

4150



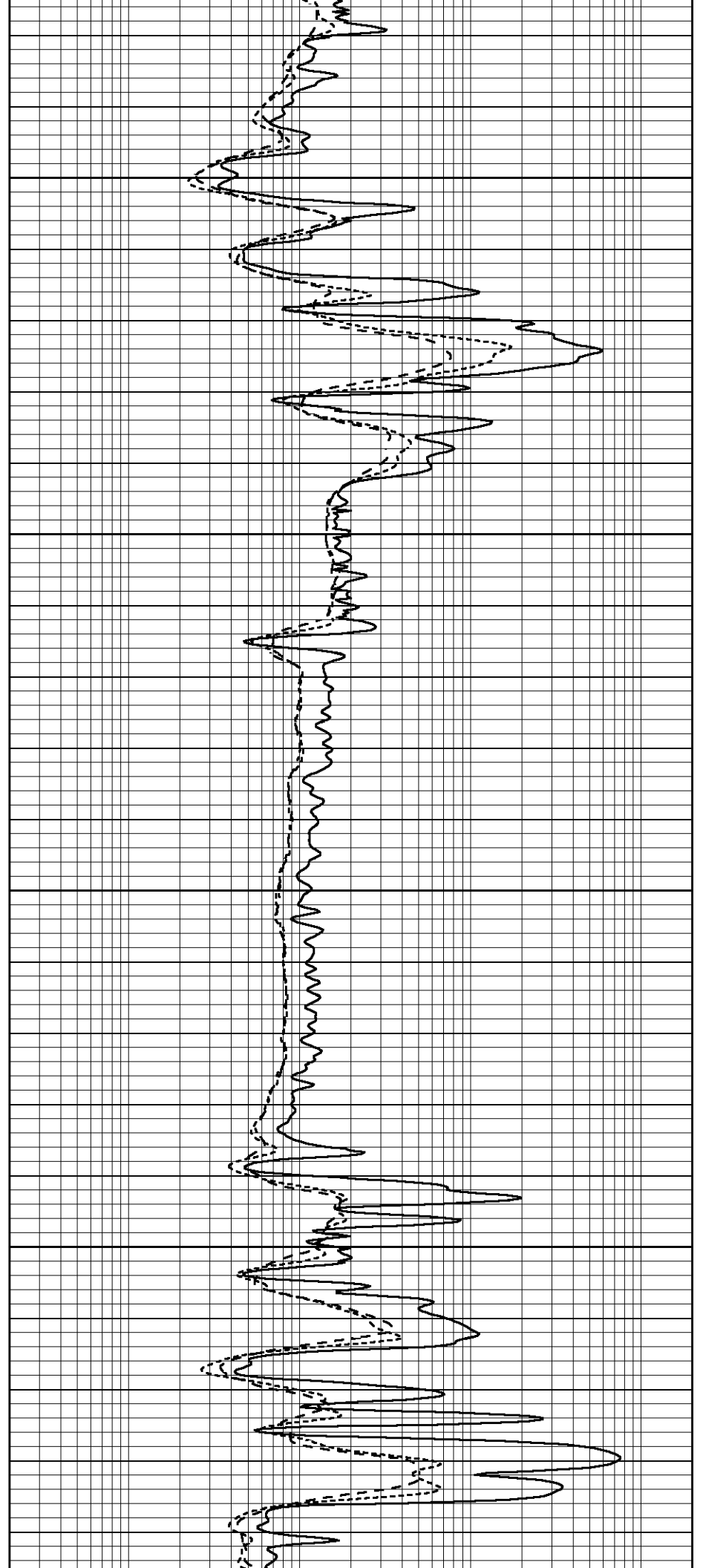


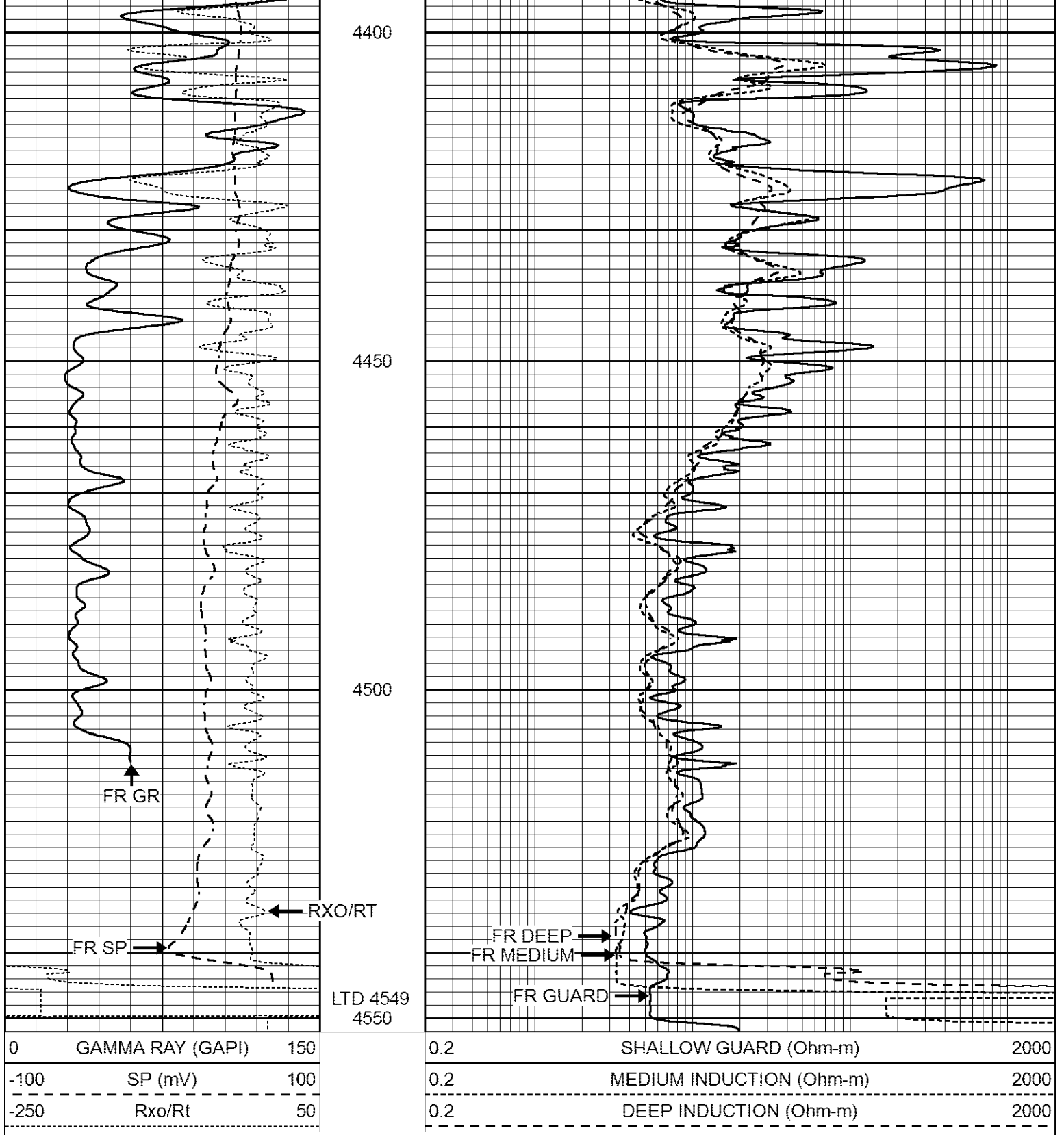
4200

4250

4300

4350





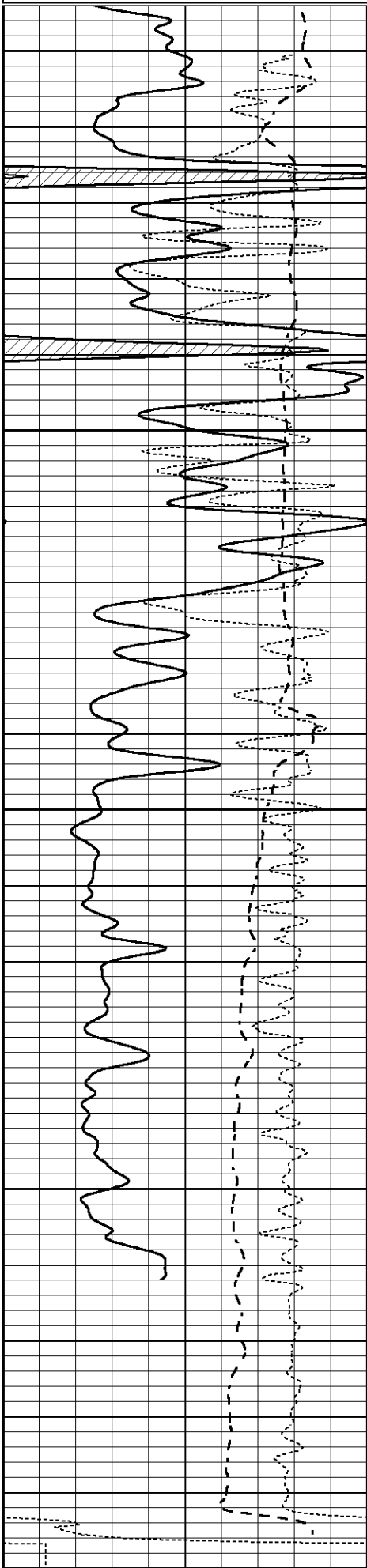
REPEAT SECTION

Database File 6753ddn.db
 Dataset Pathname pass2.R
 Presentation Format _dil
 Dataset Creation Sun Jul 03 17:12:24 2022
 Charted by Depth in Feet scaled 1:240



0	GAMMA RAY (GAPI)	150
-100	SP (mV)	100
-250	Rxo/Rt	50

0.2	SHALLOW GAUGE (Ohm-m)	2000
0.2	MEDIUM INDUCTION (Ohm-m)	2000
0.2	DEEP INDUCTION (Ohm-m)	2000



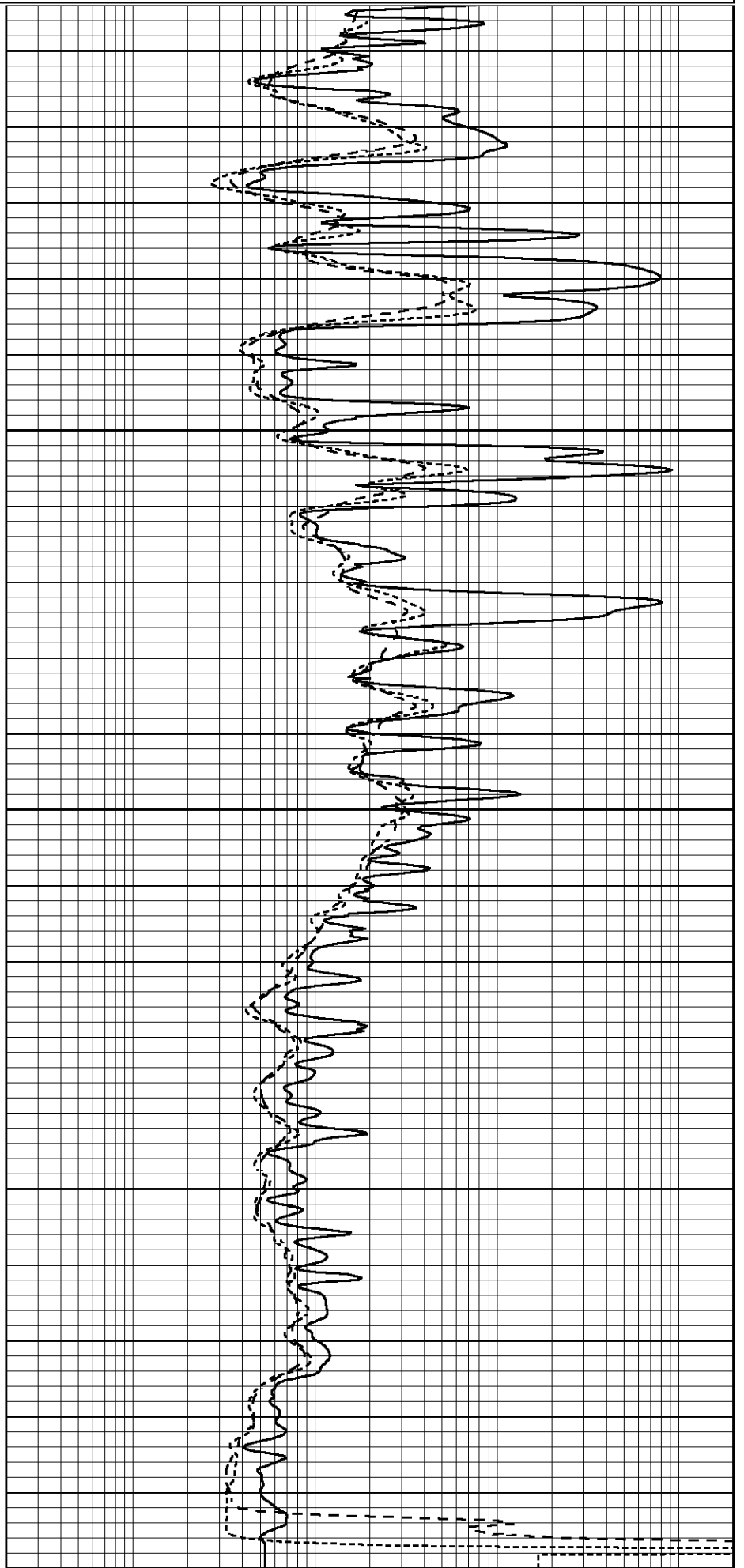
4350

4400

4450

4500

4550



0	GAMMA RAY (GAPI)	150	0.2	SHALLOW GUARD (Ohm-m)	2000
-100	SP (mV)	100	0.2	MEDIUM INDUCTION (Ohm-m)	2000
-250	Rxo/Rt	50	0.2	DEEP INDUCTION (Ohm-m)	2000

Calibration Report

Database File 6753ddn.db
 Dataset Pathname pass3.M
 Dataset Creation Sun Jul 03 17:01:48 2022

Dual Induction Calibration Report

Serial-Model: FW1410-55-Probe
 Surface Cal Performed: Thu Jun 30 01:48:00 2022
 Downhole Cal Performed: Tue Feb 19 11:44:24 2019
 After Survey Verification Performed: Tue Feb 19 11:44:27 2019

Surface Calibration

		Readings			References			Results	
Loop:	Air	Loop		Air	Loop		m	b	
Deep	0.011	0.656	V	1.000	400.000	mmho/m	650.000	-6.000	
Medium	-0.000	0.731	V	1.000	464.000	mmho/m	632.856	-12.000	
Internal:	Zero	Cal		Zero	Cal		m	b	
Deep	0.007	0.649	V	0.000	400.000	mmho/m	623.784	-4.595	
Medium	0.004	0.743	V	0.000	464.000	mmho/m	627.284	-2.251	

Downhole Calibration

		Readings			References			Results	
	Zero	Cal		Zero	Cal		m'	b'	
Deep	-0.824	395.917	mmho/m	-0.976	397.550	mmho/m	1.004	-0.149	
Medium	3.565	471.327	mmho/m	3.468	471.590	mmho/m	1.001	-0.099	
LL3		7.503	V		1500.000	Ohm-m			
		0.001	V		20.000	Ohm-m			
		-7.481	V		3745.000	mmho-m			

After Survey Verification

		Readings			Targets			Results	
	Zero	Cal		Zero	Cal		m'	b'	
Deep	0.000	0.000	mmho/m	-0.824	395.917	mmho/m	1.000	0.000	
Medium	0.000	0.000	mmho/m	3.565	471.327	mmho/m	1.000	0.000	
LL3		0.000	Ohm-m		1500.000	Ohm-m			
		0.000	Ohm-m		20.000	Ohm-m			
		0.000	mmho-m		3745.000	mmho-m			

Litho Density Calibration Report

Serial: 140704
 Model: V4_10P
 Source Number: 74GBq-19

Master Calibration

Performed: Mon May 23 14:22:47 2022

	Background	Aluminum	Magnesium	
Window 1	511.07	5437.36	23664.68	cps
Window 2	40.76	1220.39	5745.34	cps
Window 4	223.73	1233.64	5301.27	cps
Window 5	524.57	7070.10	15425.04	cps

Window 5	531.57	7878.13	15405.81	cps	
Window 6	48.52	1245.17	2497.97	cps	
Window 8	246.02	2578.14	4974.07	cps	
Bulk Density	-	2.6020	1.6830	g/cc	
Pe	-	3.0000	2.5070	b/e	
LS Alpha:	: -1.8413	SS Alpha:	: -0.8034	LS CPE:	: 1.1579
LS Beta:	: 124864.8423	SS Beta:	: 19537.1506	SS CPE:	: 1.6371

Before Survey Background Counts Verification

Performed: Wed Dec 31 18:00:00 1969

Window 1	0.00	cps
Window 2	0.00	cps
Window 4	0.00	cps
Window 5	0.00	cps
Window 6	0.00	cps
Window 8	0.00	cps

After Survey Background Counts Verification

Performed: Wed Dec 31 18:00:00 1969

Window 1	0.00	cps
Window 2	0.00	cps
Window 4	0.00	cps
Window 5	0.00	cps
Window 6	0.00	cps
Window 8	0.00	cps

Lithodensity Caliper Calibration

Performed: Mon May 23 14:22:47 2022

Results		Readings		References (in)		Gain	Offset
Low	High	Low	High				
8210.8	12139.3	7.0	14.0			0.0	-7.3

Before Survey Caliper Verification

Performed:

	Reference	Reading
Caliper (in)	_____	_____

After Survey Caliper Verification

Performed:

	Reference	Reading
Caliper (in)	_____	_____

Compensated Neutron Calibration Report

Serial Number: 080621PMC
Tool Model: NABORS

PRE-SURVEY VERIFICATION

Detector	Readings	Measured	Target
Short Space	cps		
Long Space	cps	pu	pu

POST-SURVEY VERIFICATION

Detector
Short Space
Long Space

Readings

cps
cps

Measured

pu

Target

pu

Gamma Ray Calibration Report

Serial Number:	7	
Tool Model:	Probe1	
Performed:	Thu May 26 08:56:46 2022	
Calibrator Value:	1.0	GAPI
Background Reading:	0.0	cps
Calibrator Reading:	1.0	cps
Sensitivity:	0.5500	GAPI/cps