



MIDWEST WIRELINE

MICRORESISTIVITY LOG

Company Carmen Schmitt, Inc.

Well Dairy #1-13

Field

County Thomas

State Kansas

Location: API #: 15-193-21105-00-00

NE NW NW SE
2475 FSL & 2050 FEL

SEC 13 TWP 7S RGE 32W

Permanent Datum Ground Level Elevation 3025
Log Measured From Kelly Bushing
Drilling Measured From Kelly Bushing

Other Services
CNL/CDL
DIL

Elevation
K.B. 3030
D.F.
G.L. 3025

Date	8/6/2022
Run Number	One
Depth Driller	4705
Depth Logger	4705
Bottom Logged Interval	4704
Top Log Interval	3600
Casing Driller	8.625 @ 264
Casing Logger	264
Bit Size	7.875
Type Fluid in Hole	Chemical
Salinity, ppm CL	2800
Density / Viscosity	9.4 57
pH / Fluid Loss	11.0 7.6
Source of Sample	Flowline
Rm @ Meas. Temp	0.9 @ 72
Rmt @ Meas. Temp	0.68 @ 72
Rmc @ Meas. Temp	1.22 @ 72
Source of Rmf / Rmc	Charts
Rm @ BHT	0.53 @ 123
Operating Rig Time	2.5 Hours
Max Rec. Temp. F	123
Equipment Number	P-24
Location	Hays
Recorded By	T. Martin
Witnessed By	Sean Deenihan

<<< Fold Here >>>

All interpretations are opinions based on inferences from electrical or other measurements and Midwest Wireline LLC cannot and does not guarantee the accuracy or correctness of any interpretation, and Midwest Wireline LLC will not be liable or responsible for any loss, costs, damages, or expenses incurred or sustained by anyone resulting from any interpretation made by any of our officers, agents or employees.

Comments

N/A DENOTES NOT AVAILABLE OR NON-APPLICABLE.

Rexford, KS, W on Hwy 24 to Rd 31,
N over tracks, W to location

Log Measured From: Kelly Bushing 5 Ft. Above Permanent Datum

THANK YOU FOR USING MIDWEST WIRELINE LLC
785-625-3858

Your Midwest Wireline Crew

Engineer: T. Martin
Operator:
Operator:
Operator:

This Log Record Was Witnessed By

Primary Witness: Sean Deenihan
Secondary Witness:
Secondary Witness:
Secondary Witness:

Sensor	Offset (ft)	Schematic	Description	Length (ft)	O.D. (in)	Weight (lb)
GR	40.33		GR-M&W (106)	3.00	3.50	50.00
CNLSC CNSSC	37.23 36.48		CNT-M&W (207-MW)	5.00	3.50	100.00
LSD DCAL SSD	28.18 28.17 27.68		CDL-M&W (301-01)	8.50	4.00	250.00
MCAL MI MN	19.58 19.58 19.58		ML-PSIML (402)	7.58	4.00	65.00
RLL3F RLL3	15.50 15.50					
CILD	8.33		DIL-M&W (507)	18.25	3.50	220.00
CILM	4.50					
SP	0.20					

Dataset: carmen_dairy #1-13.db: field/well/StkMI/pass3.1
 Total length: 42.33 ft
 Total weight: 685.00 lb
 O.D.: 4.00 in

Log Variables

DatabaseC:\ProgramData\Warrior\Data\carmen_dairy #1-13.db
 Dataset field/well/StkMI/pass3.1/_vars_

Top - Bottom

A	BOREID in	BOTTEMP degF	CASEOD in	CASETHCK in	FLUIDDEN g/cc	M	MATRXDEN g/cc
1	7.875	123	5.5	0	1	2	2.71
NPORSEL	PERFS	SNDERR mmho/m	SNDERRM mmho/m	SPSHIFT mV	SRFTEMP degF	SZCOR	TDEPTH ft
Limestone	0	0	0	205	80	Off	4705

Variable Description

A : Cement Factor (a)
 BOREID : Borehole I.D.
 BOTTEMP : Bottom Hole Temperature
 CASEOD : Casing O.D.
 CASETHCK : Casing Thickness
 FLUIDDEN : Fluid Density
 M : Cement Exp (m)
 MATRXDEN : Matrix Density

NPORSEL : Neutron Porosity Curve Select
 PERFS : Perforation Flag
 SNDERR : Deep Sonde Error Correction
 SNDERRM : Medium Sonde Error Correction
 SPSHIFT : S.P. Baseline Offset
 SRFTEMP : Surface Temperature
 SZCOR : CN Size Cor. ?
 TDEPTH : Total Depth



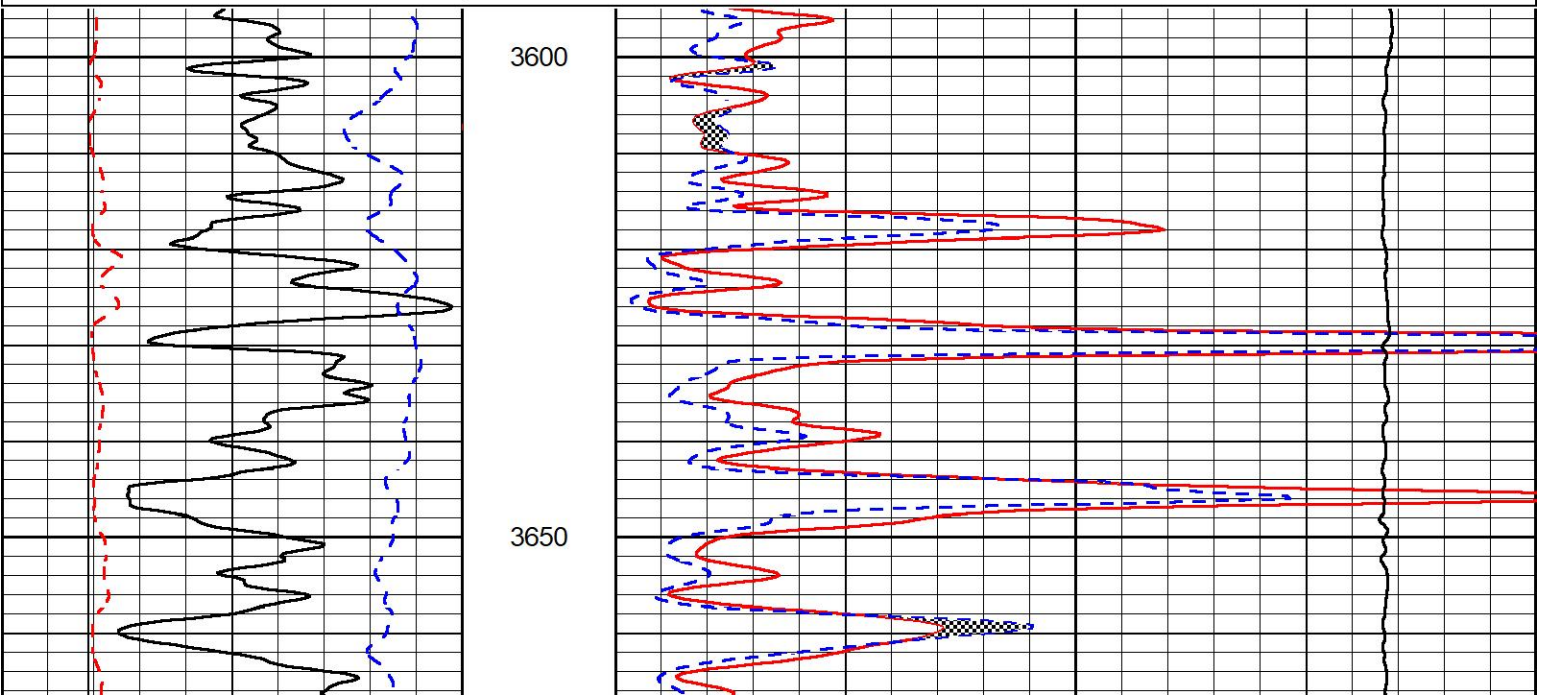
DETAIL SECTION

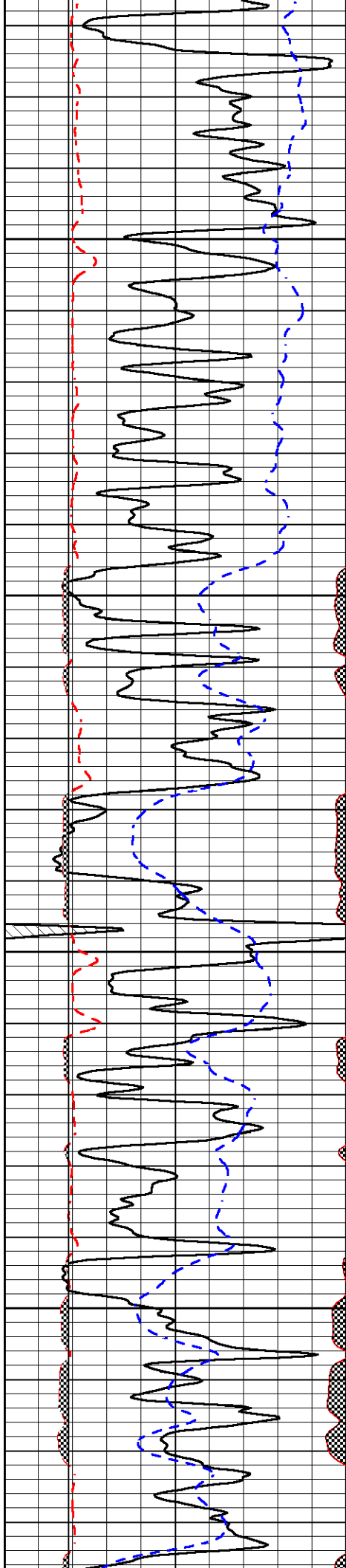
MAIN PASS

Database File carmen_dairy #1-13.db
 Dataset Pathname StkMI/pass3.1
 Presentation Format _micro
 Dataset Creation Sat Aug 06 12:04:53 2022
 Charted by Depth in Feet scaled 1:240

0	Gamma Ray (GAPI)	150
6	Caliper (in)	16
2.875	mcal (in)	7.875
-200	sp (mV)	0

0	Micro Inverse 1 X 1 (Ohm-m)	40
0	Micro Normal 2" (Ohm-m)	40
10000	Line Weight (lb)	0



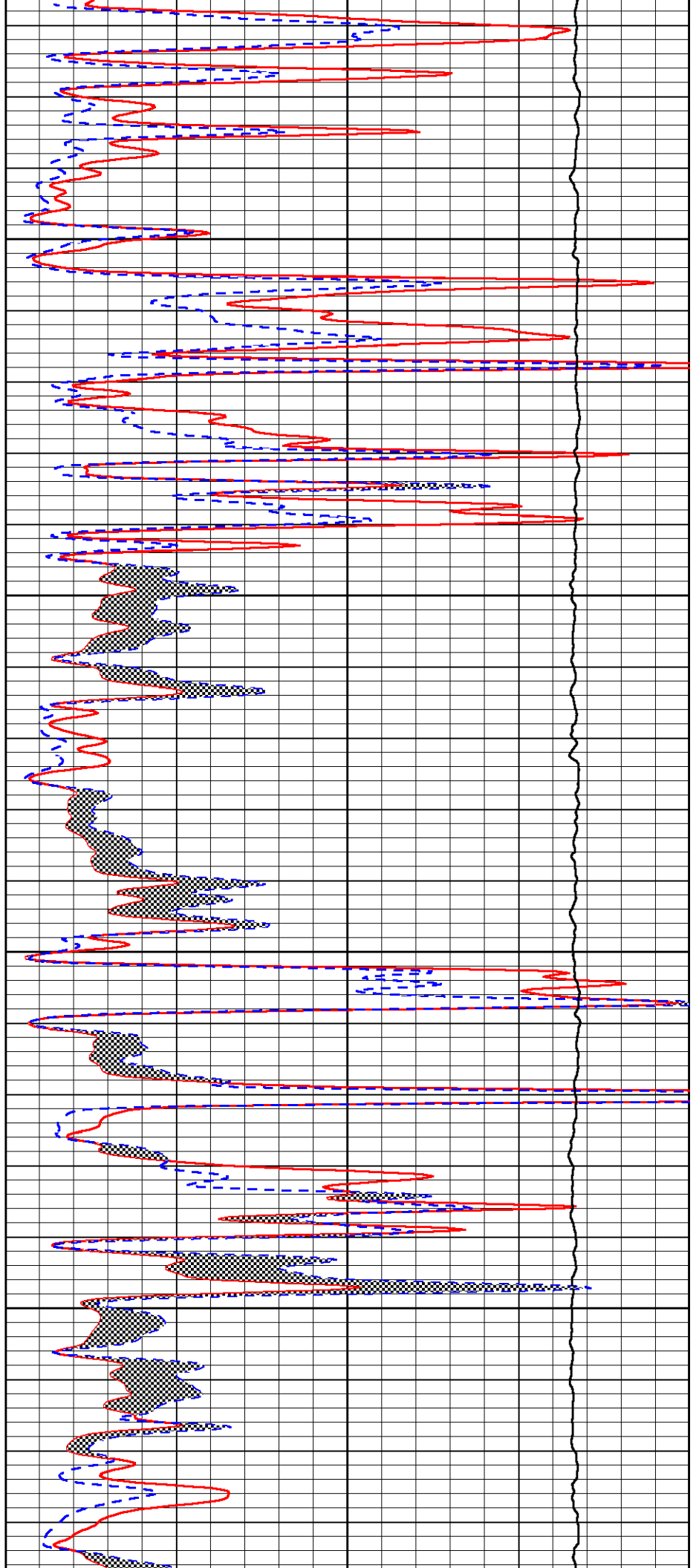


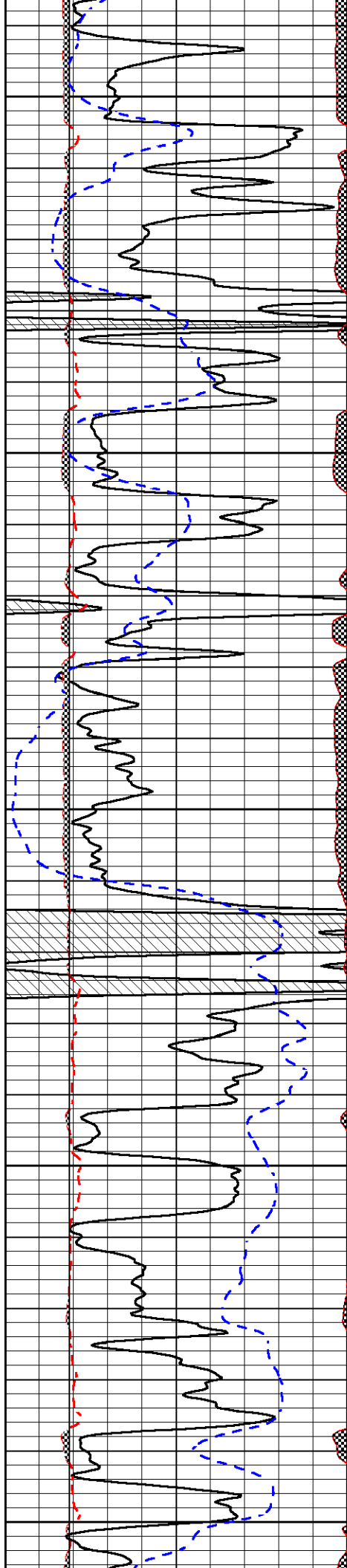
3700

3750

3800

3850





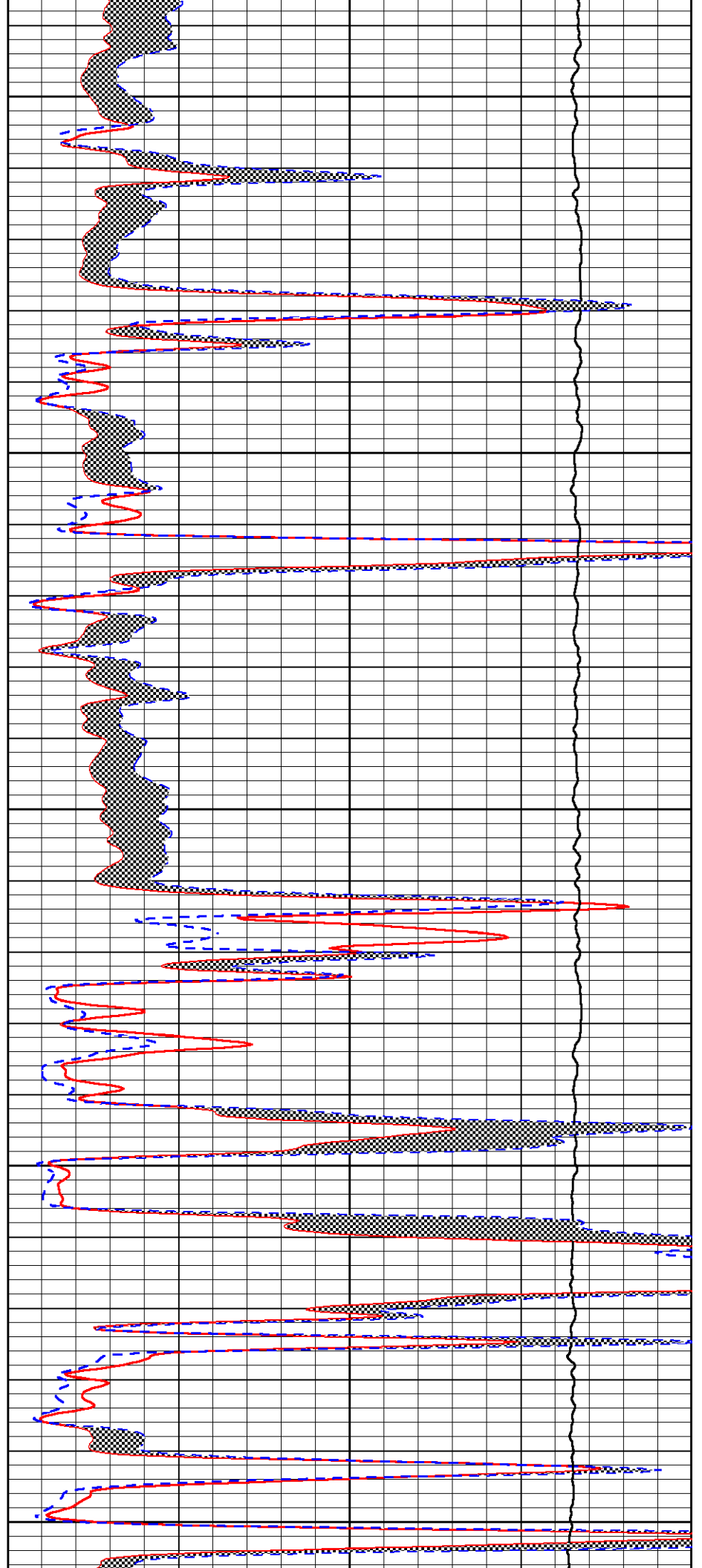
3900

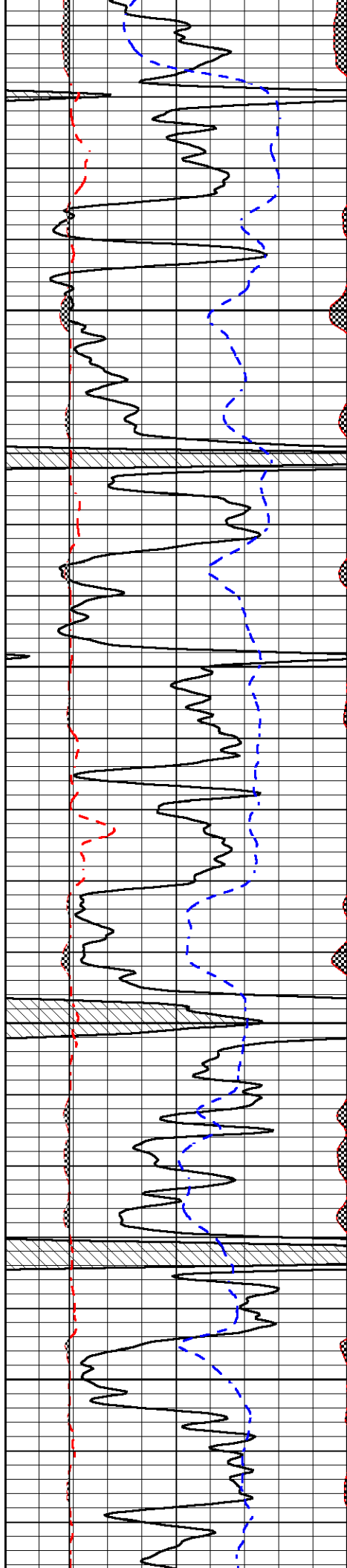
3950

4000

4050

4100



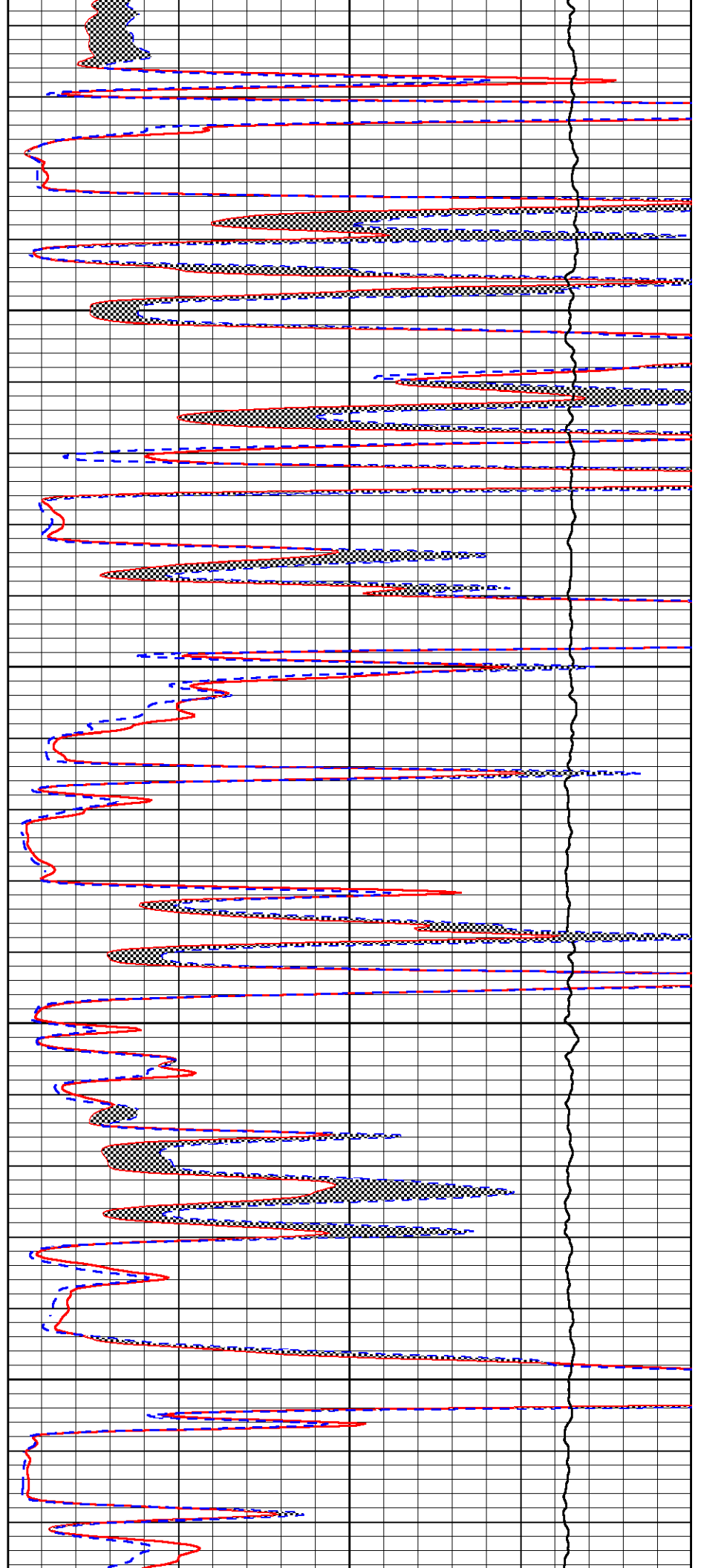


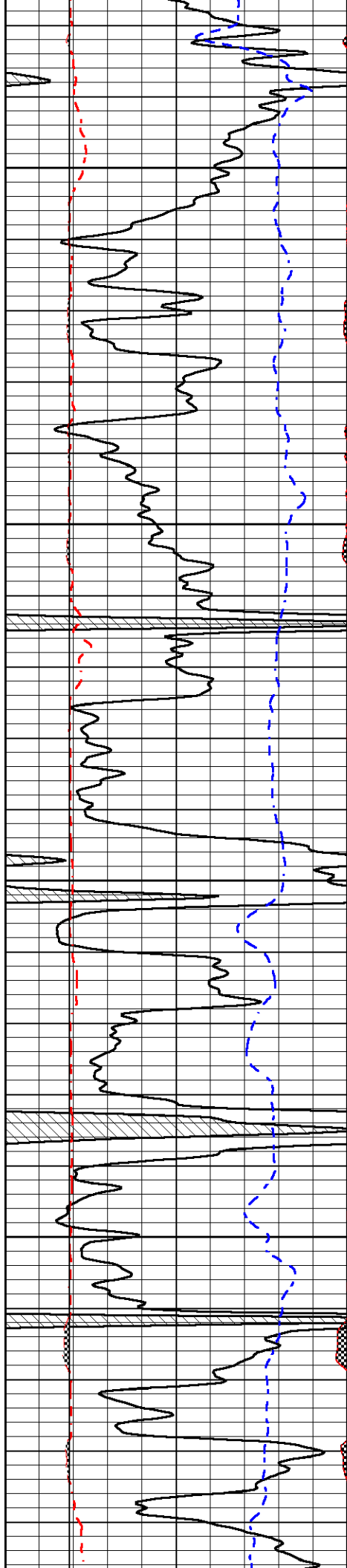
4150

4200

4250

4300



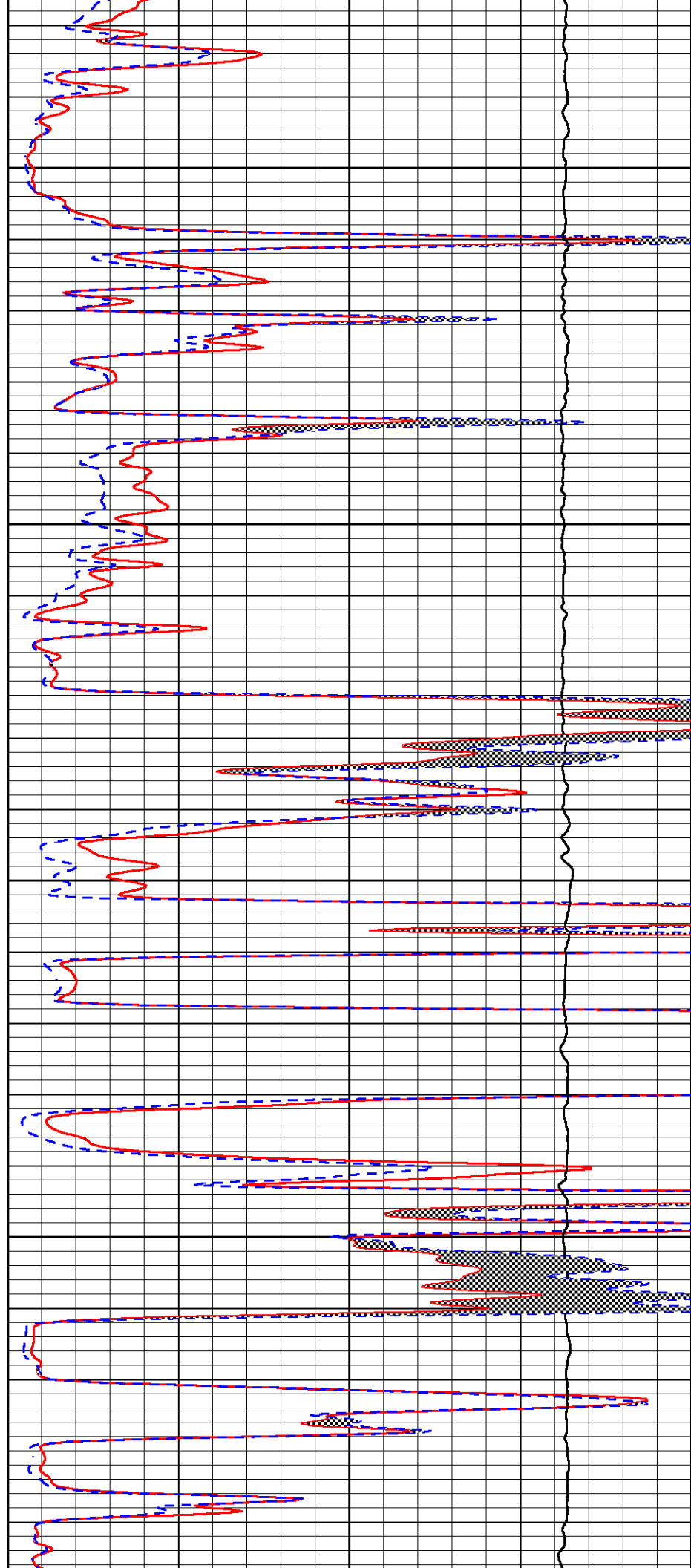


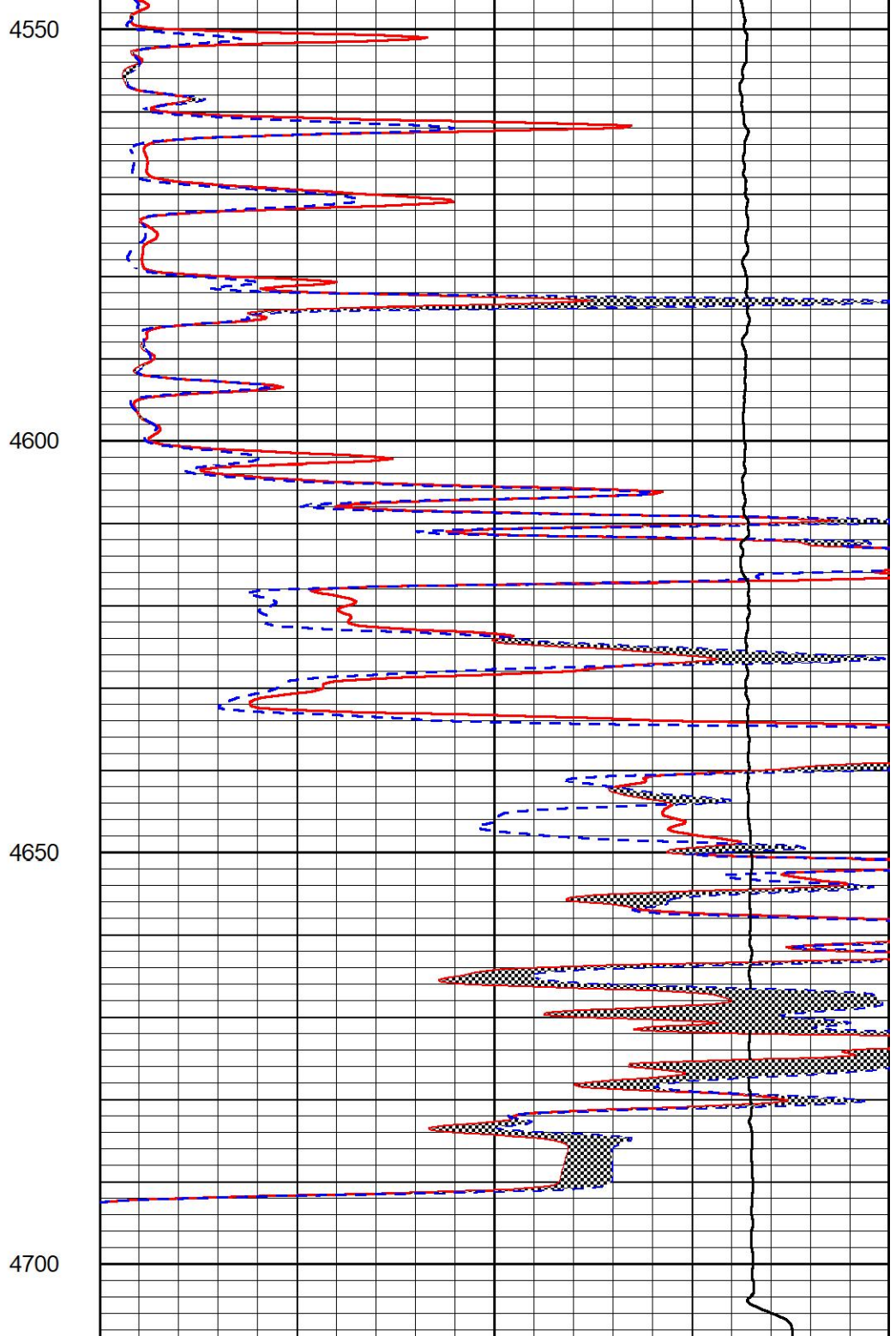
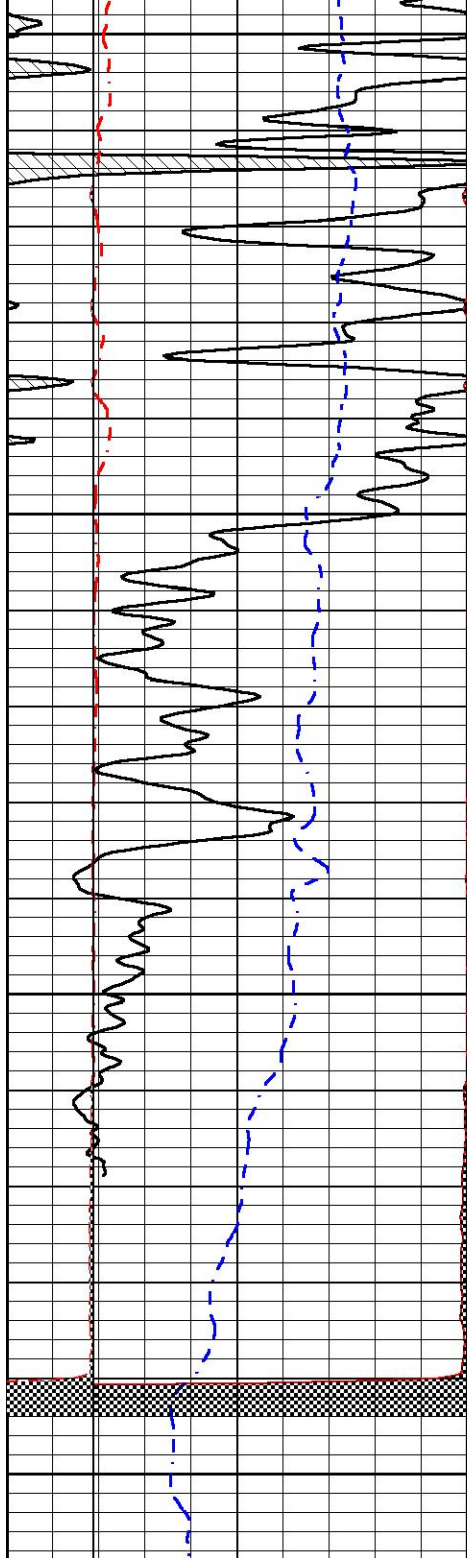
4350

4400

4450

4500





0	Gamma Ray (GAPI)	150
6	Caliper (in)	16
2.875	mcal (in)	7.875
-200	sp (mV)	0

0	Micro Inverse 1 X 1 (Ohm-m)	40
0	Micro Normal 2" (Ohm-m)	40
10000	Line Weight (lb)	0



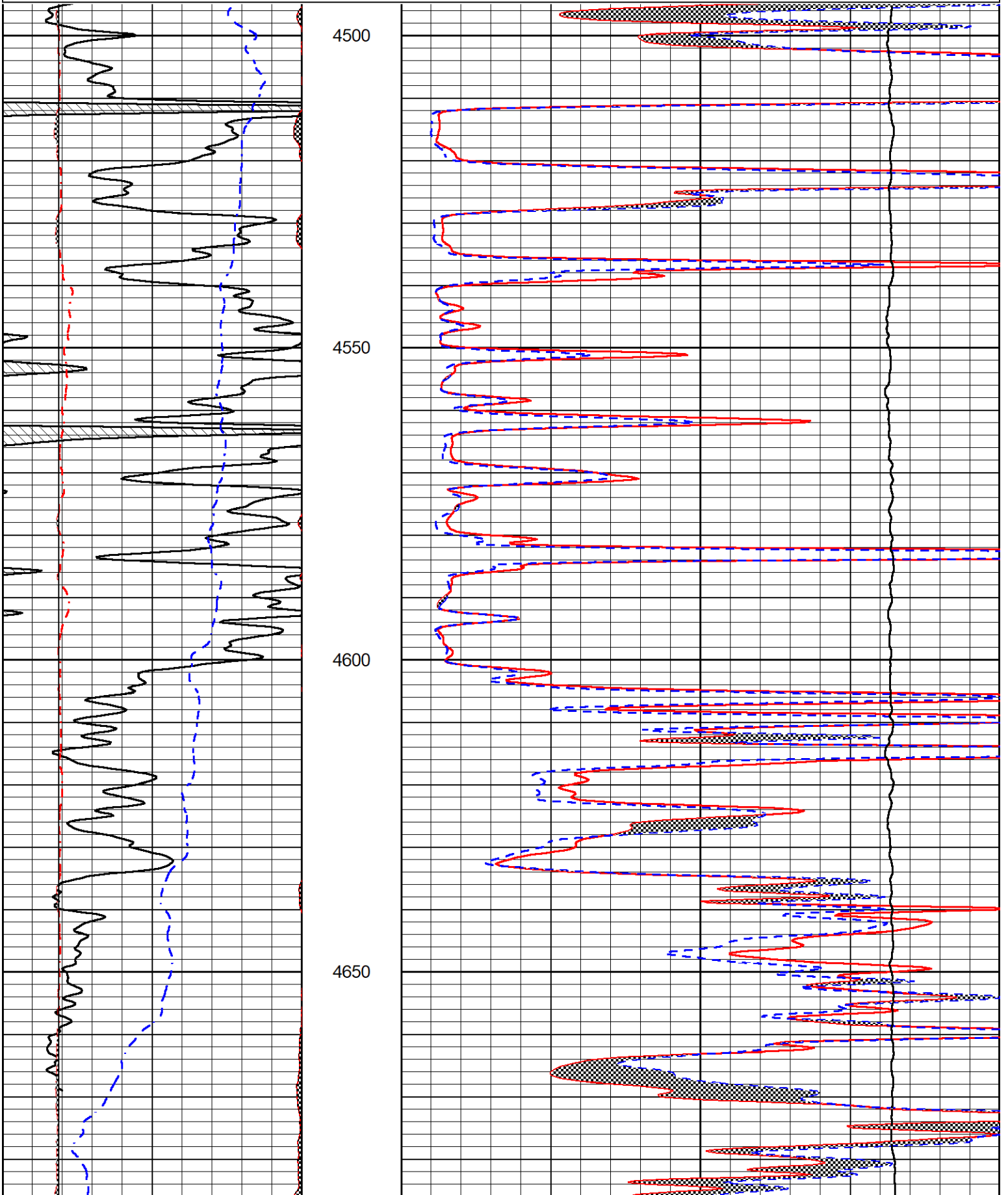
REPEAT SECTION

REPEAT PASS

Database File carmen_dairy #1-13.db
 Dataset Pathname StkMI/pass2.1
 Presentation Format _micro

0	Gamma Ray (GAPI)	150
6	Caliper (in)	16
2.875	mcal (in)	7.875
-200	sp (mV)	0

0	Micro Inverse 1 X 1 (Ohm-m)	40
0	Micro Normal 2" (Ohm-m)	40
10000	Line Weight (lb)	0



Compensated Neutron Calibration Report

Serial Number: 207-MW
Tool Model: M&W

CALIBRATION

Detector	Readings	Target	Normalization
Short Space	6240.00 cps	1000.00 cps	1.6025
Long Space	460.00 cps	1000.00 cps	1.9500

PRE-SURVEY VERIFICATION

Detector	Readings	Measured	Target
1) Short Space	cps		
Long Space	cps	pu	pu
2) Short Space	cps		
Long Space	cps	pu	
3) Short Space	cps		
Long Space	cps	pu	

POST-SURVEY VERIFICATION

Detector	Readings	Measured	Target
1) Short Space	cps		
Long Space	cps	pu	pu
2) Short Space	cps		
Long Space	cps	pu	pu
3) Short Space	cps		
Long Space	cps	pu	pu

Gamma Ray Calibration Report

Serial Number: 106
Tool Model: M&W
Performed: Fri Dec 3 15:10:46 2021

Calibrator Value: 500.0 GAPI

Background Reading: 24.0 cps
Calibrator Reading: 637.0 cps

Sensitivity: 0.5500 GAPI/cps



Company Carmen Schmitt, Inc.
Well Dairy #1-13
Field
County Thomas
State Kansas