

Company PALOMINO PETROLEUM, LLC.
Well SHARP DRESSED MAN No.1
Field
County GOVE State KANSAS

Location: API # : 15-063-22411
713' FSL & 628' FEL
SEC 16 TWP 14s RGE 30w
Permanent Datum GROUND LEVEL Elevation 2742
Log Measured From K.B. 11' A.G.L.
Drilling Measured From KELLY BUSHING
Elevation K.B. 2763
D.F. 2751
G.L. 2742

Date	JUNE 10, 2022
Run Number	ONE
Depth Driller	4600
Depth Logger	4598
Bottom Logged Interval	4535
Top Log Interval	4533
Open Hole Size	WATER
Type Fluid	
Density / Viscosity	
Max. Recorded Temp.	127F
Estimated Cement Top	
Time Well Ready	
Time Logger on Bottom	PT-08
Equipment Number	HAYS
Location	BRAD LEIKER
Recorded By	LYNN BOWNES
Witnessed By	

Borehole Record		Tubing Record				
Run Number	Bit From	To	Size	Weight	From	To
ONE	12.25	00	226			
TWO	7.875	00	4600			

Casing Record	Size	Wgt/Ft	Top	Bottom
Surface String	8 5/8	23#	00	226
Prot. String				
Production String	5 1/2	14#	00	4594
Liner				

<<< Fold Here >>>

All interpretations are opinions based on inferences from electrical or other measurements and we cannot and do not guarantee the accuracy or correctness of any interpretation, and we shall not, except in the case of gross or willful negligence on our part, be liable or responsible for any loss, costs, damages, or expenses incurred or sustained by anyone resulting from any interpretation made by any of our officers, agents or employees. These interpretations are also subject to our general terms and conditions set out in our current Price Schedule.

Comments

THANK YOU FOR USING
PERF-TECH WIRELINE SERVICES, INC.
(785) 623-3969

GOVE KS, SOUTH TO I RD,
WEST TO 28 RD,
2 NOTH, WEST INTO.

Database File: june100822.db
 Dataset Pathname: pass4
 Presentation Format: 3x5
 Dataset Creation: Fri Jun 10 09:10:09 2022 by Log SCH 120126
 Charted by: Depth in Feet scaled 1:240

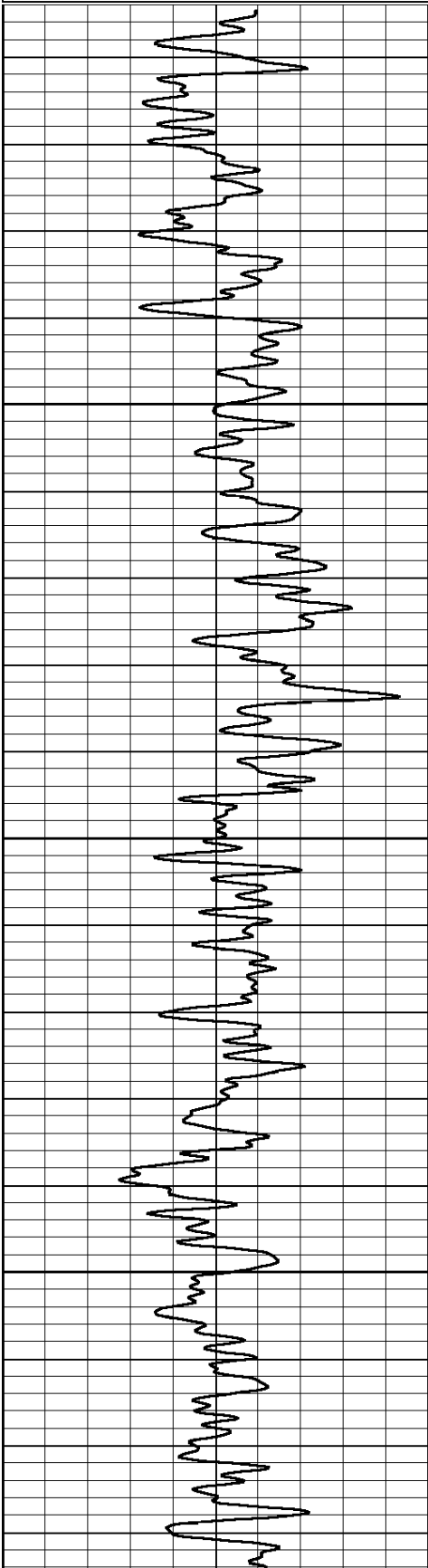
0 Gamma Ray (GAPI) 150

0 3' AMPLITUDE (mV) 100

200 5' Variable Density 1100

395 3' TRAVEL TIME (usec) 225

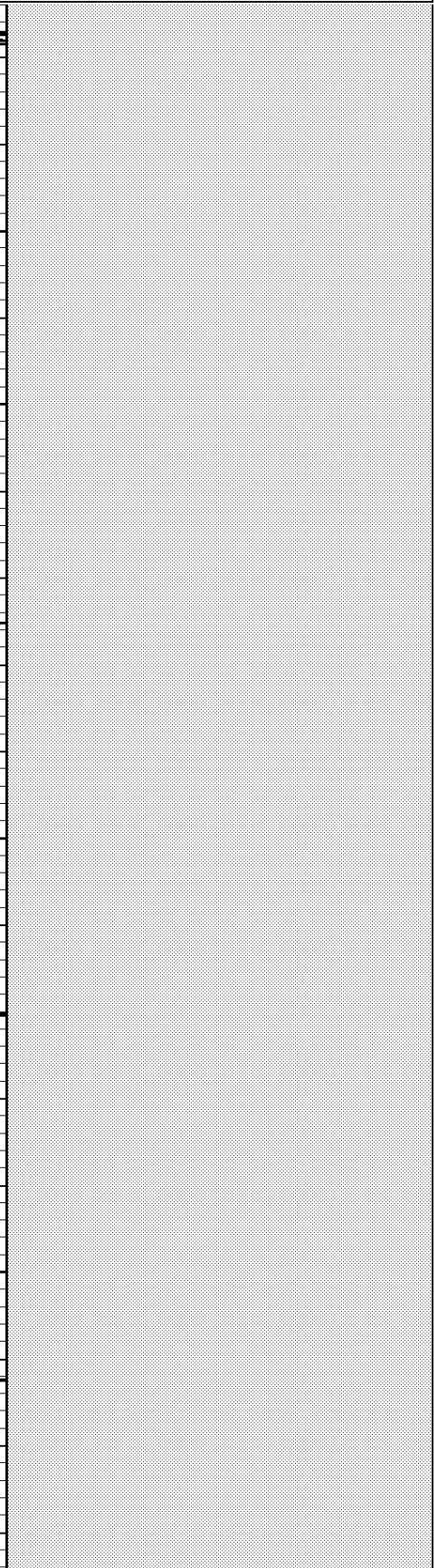
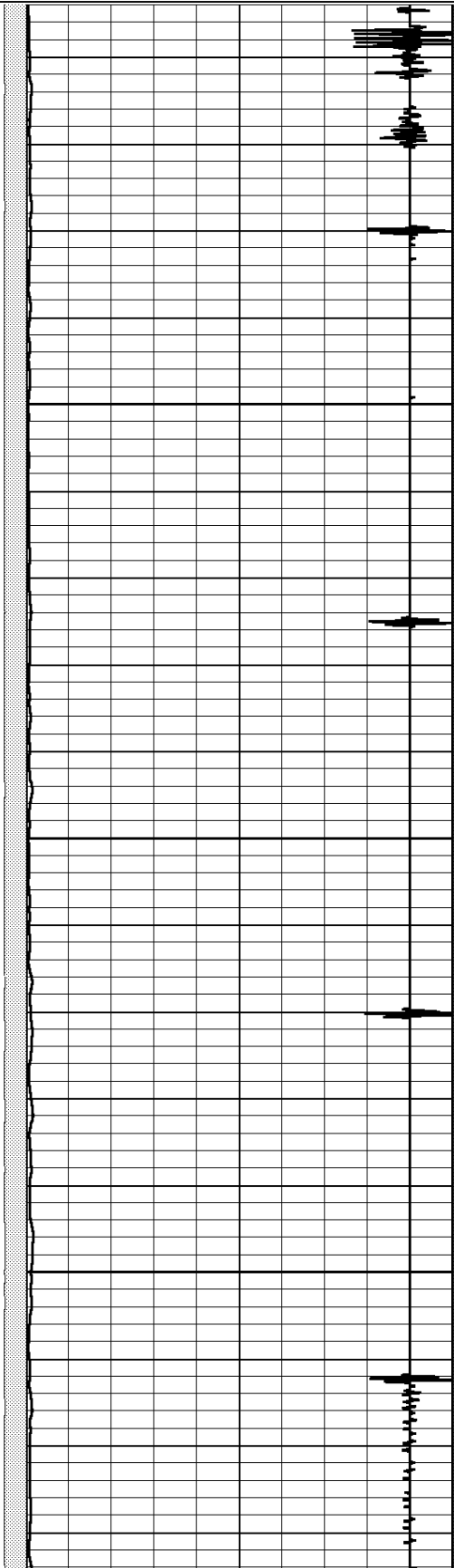
9 Collar Locator -1

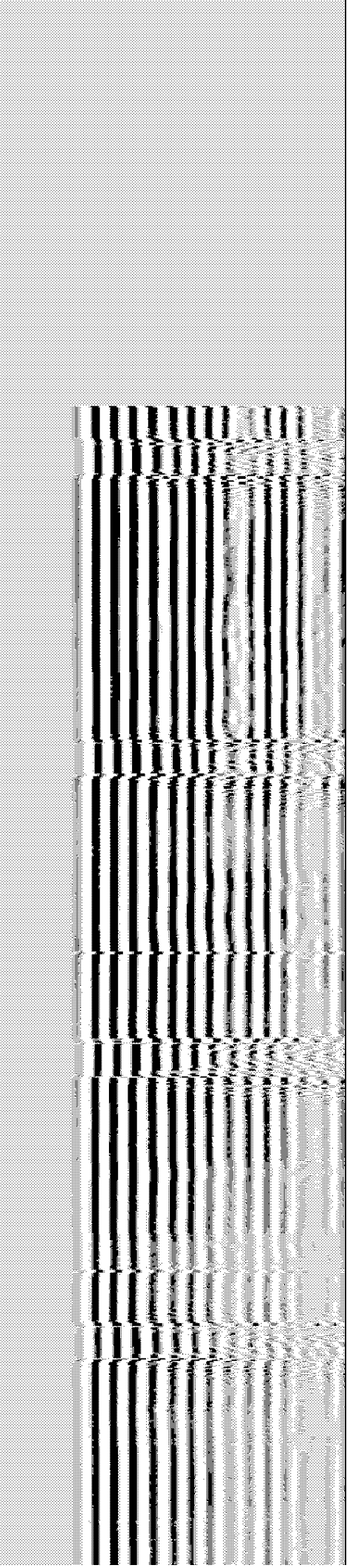
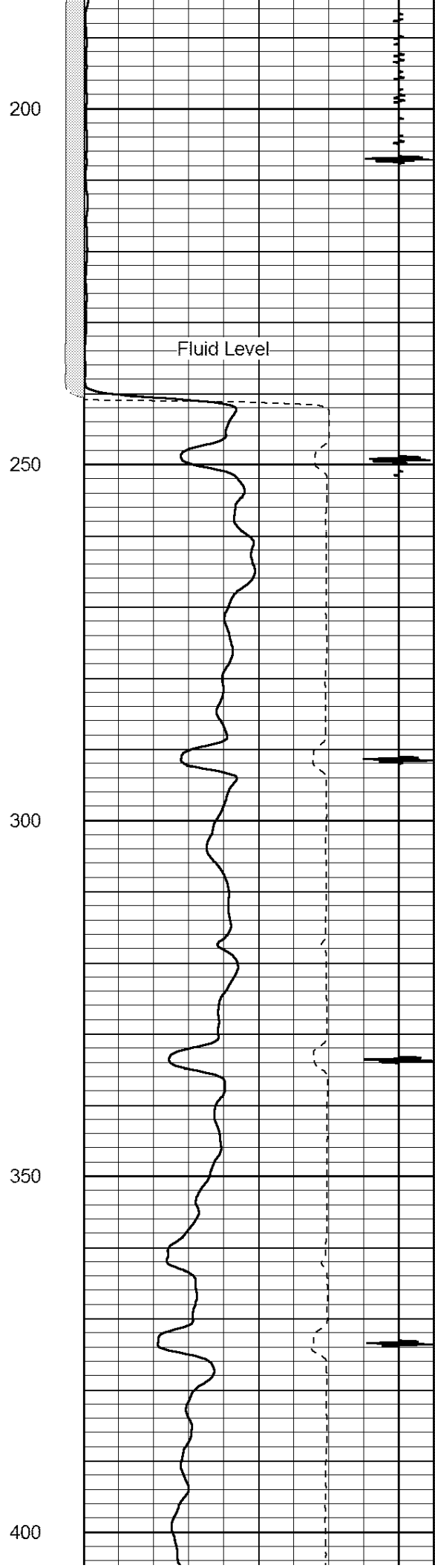
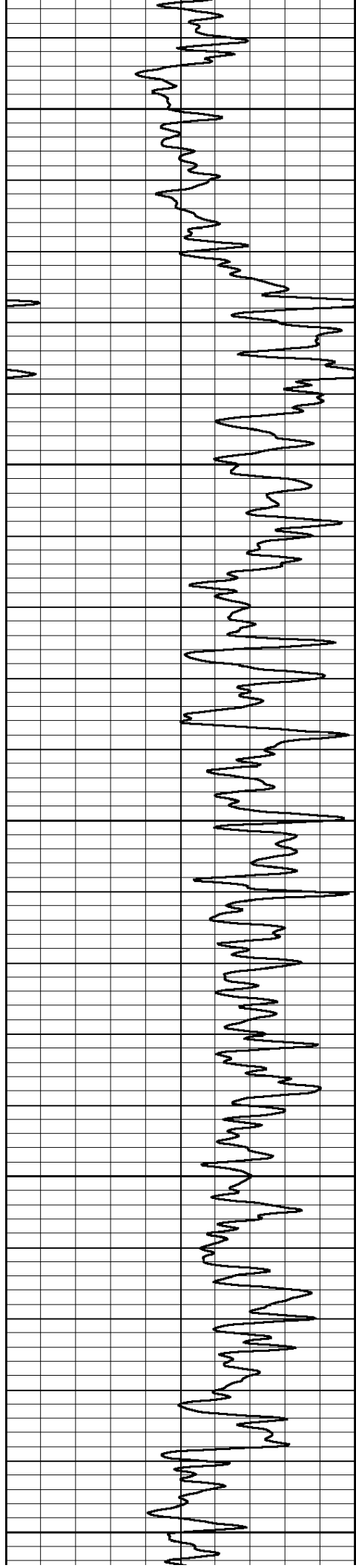


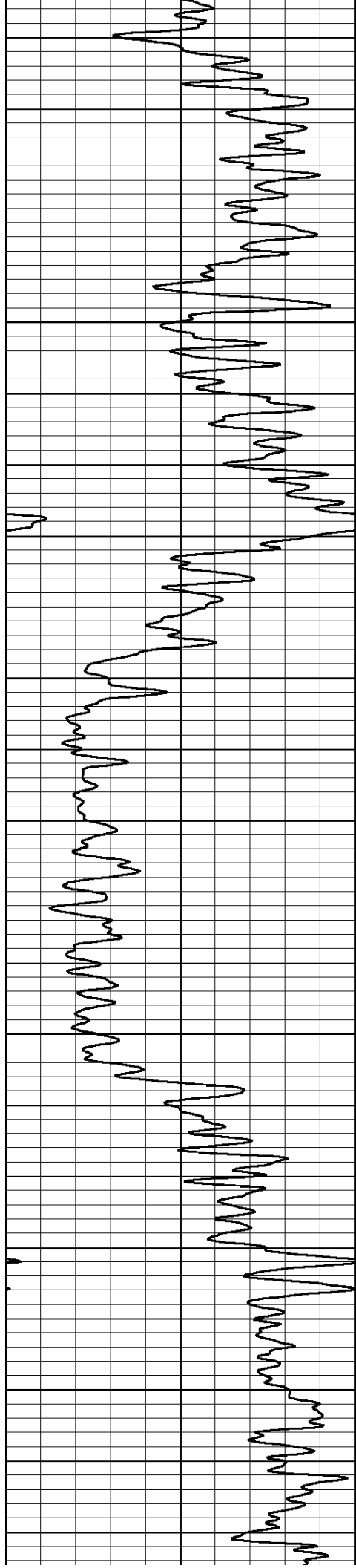
50

100

150





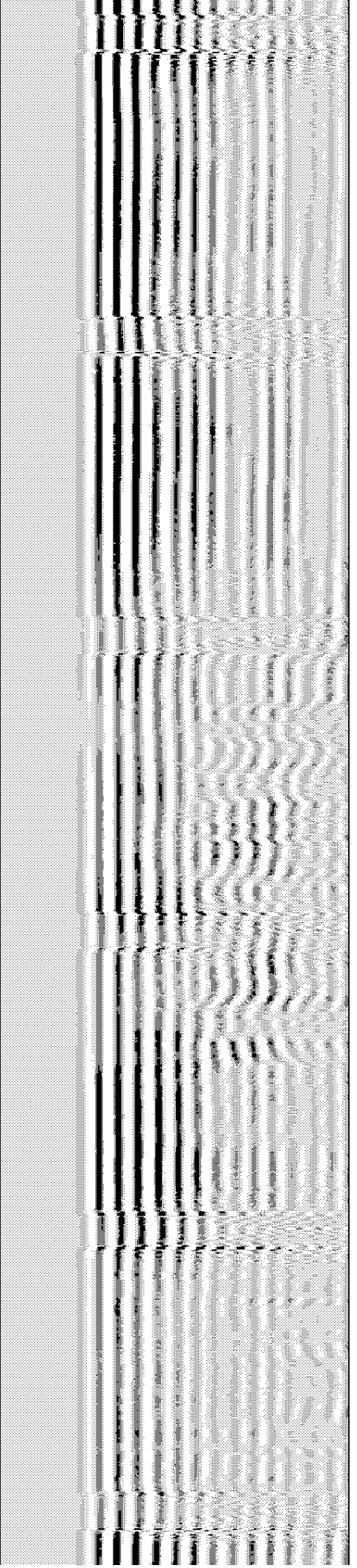
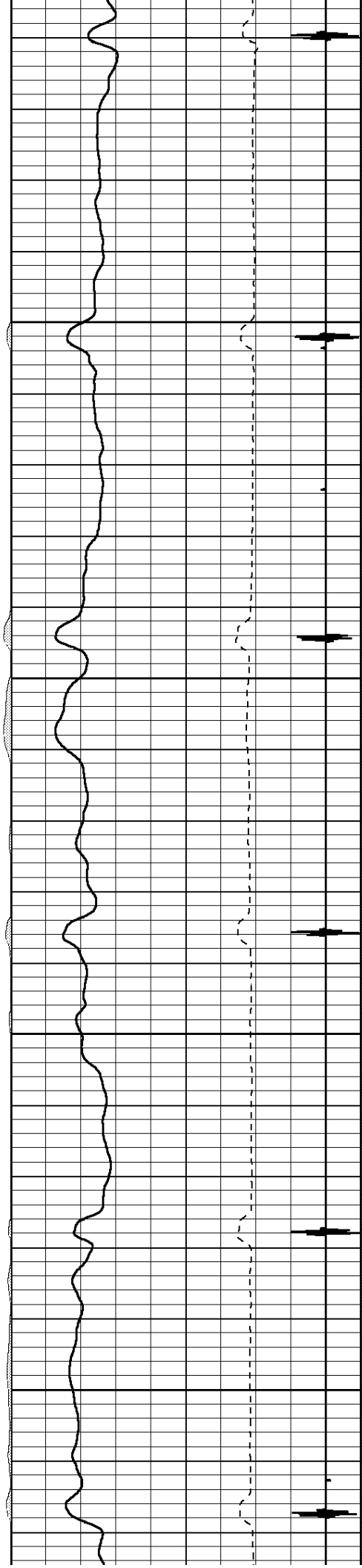


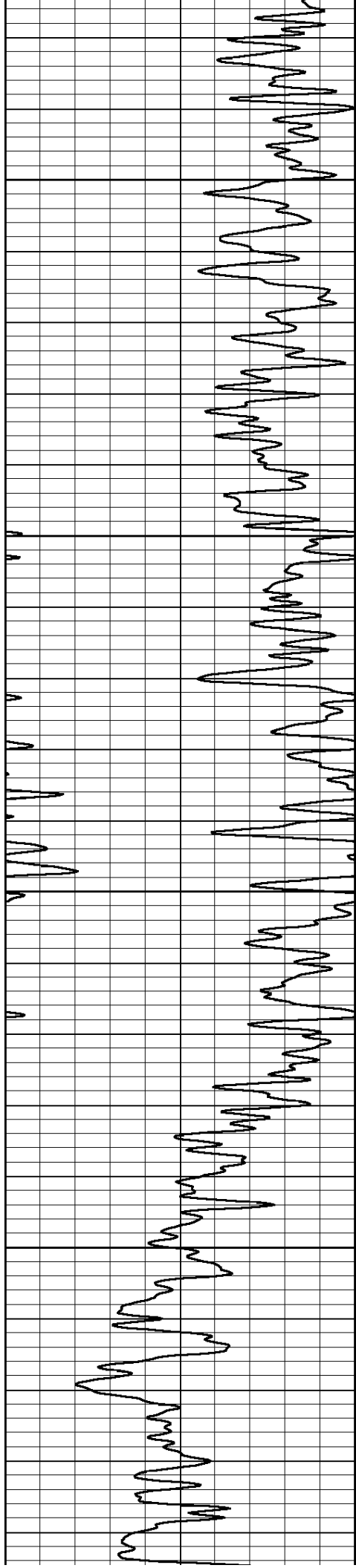
450

500

550

600



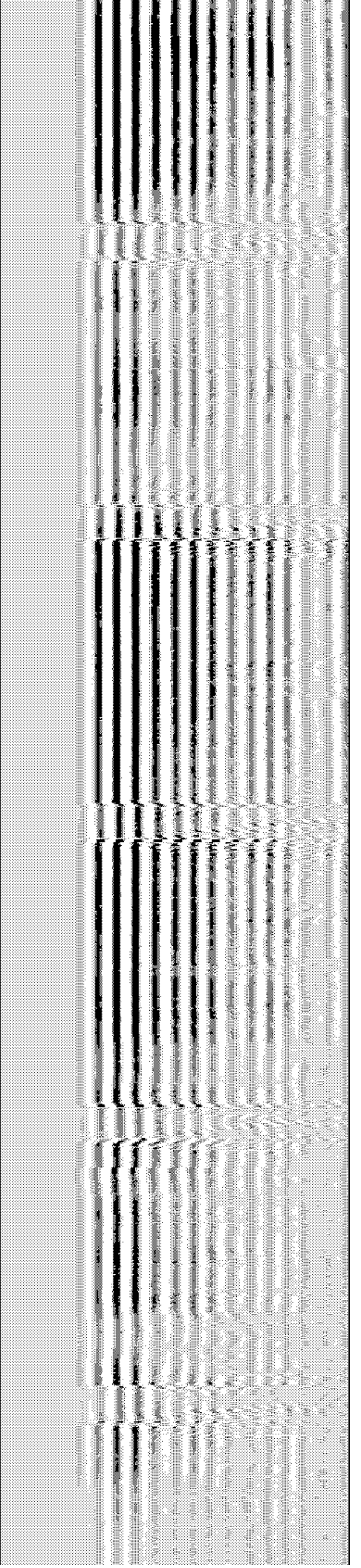
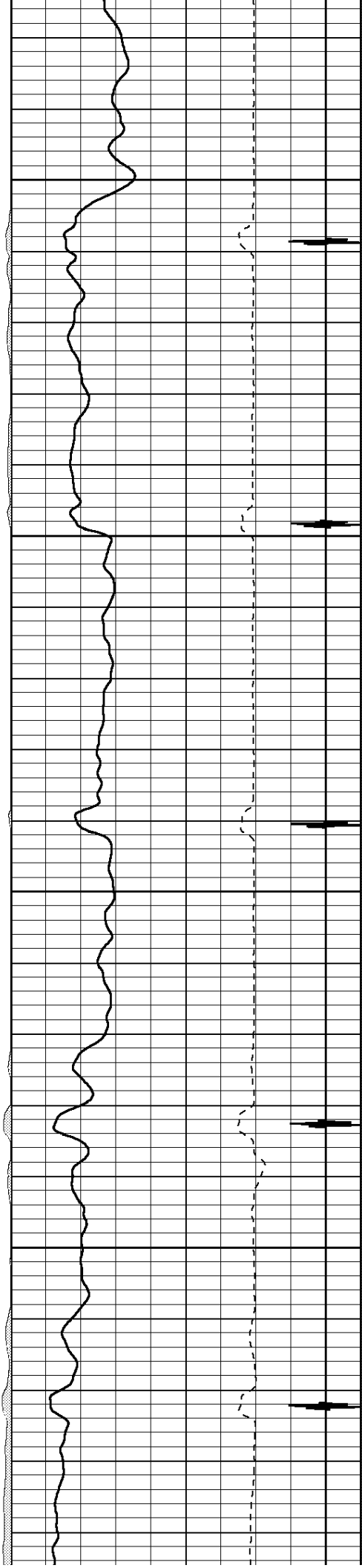


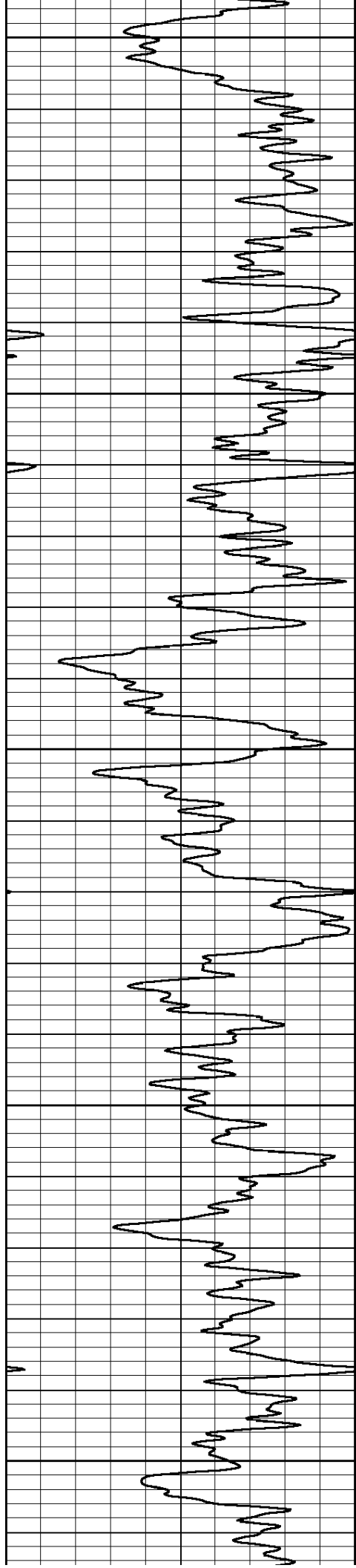
650

700

750

800





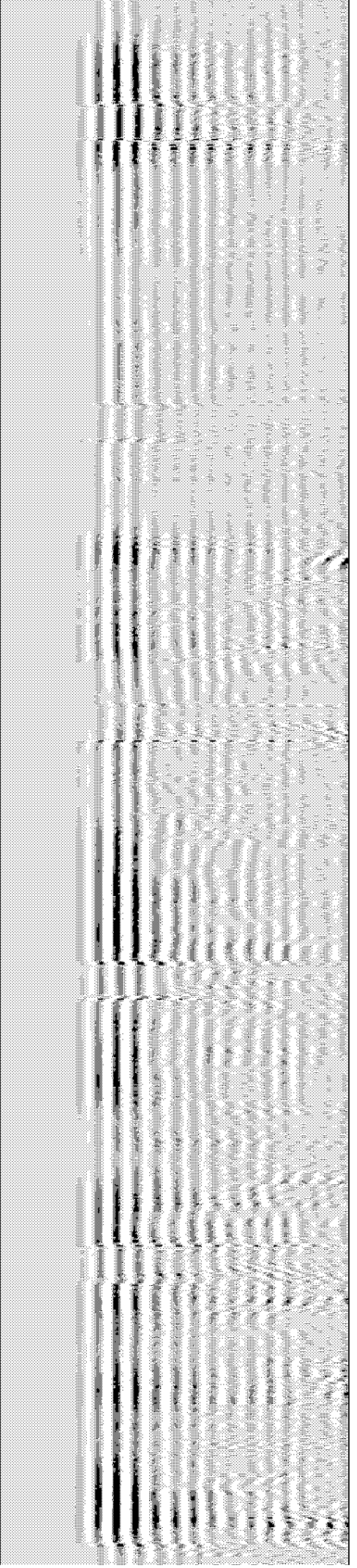
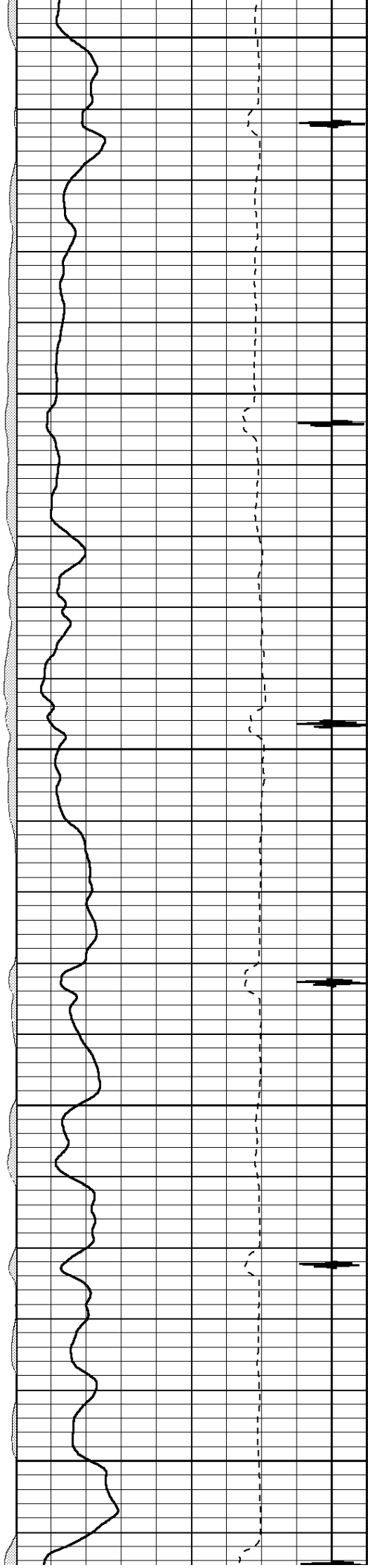
850

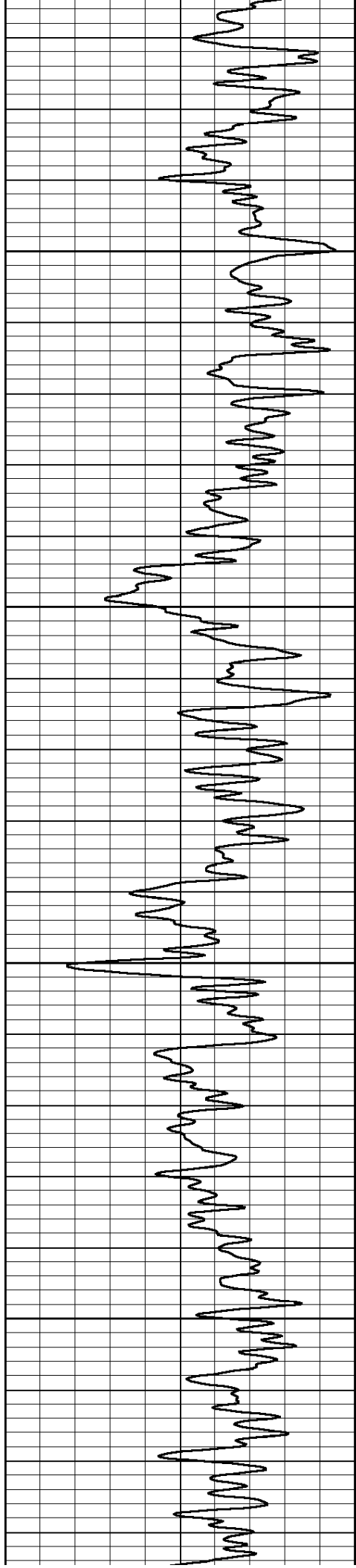
900

950

1000

1050



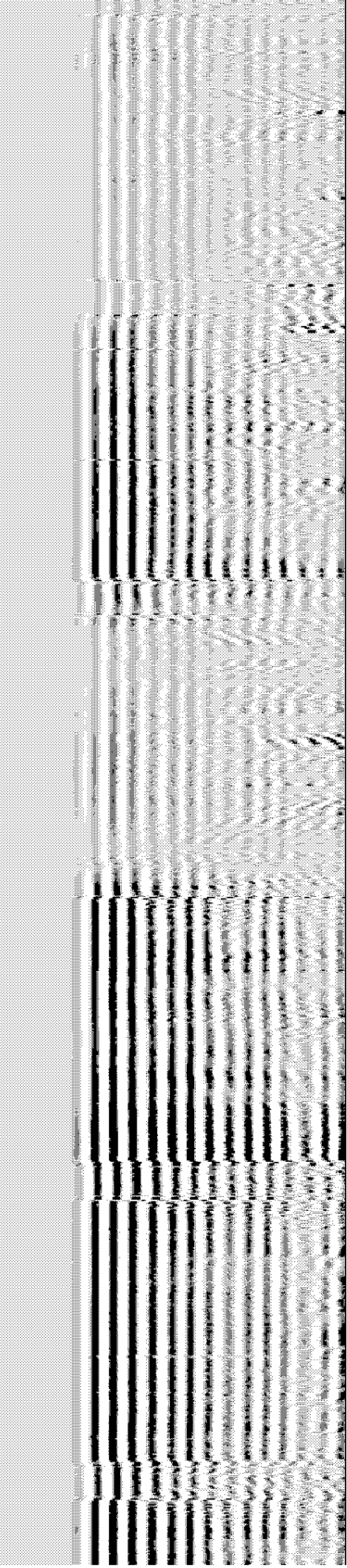
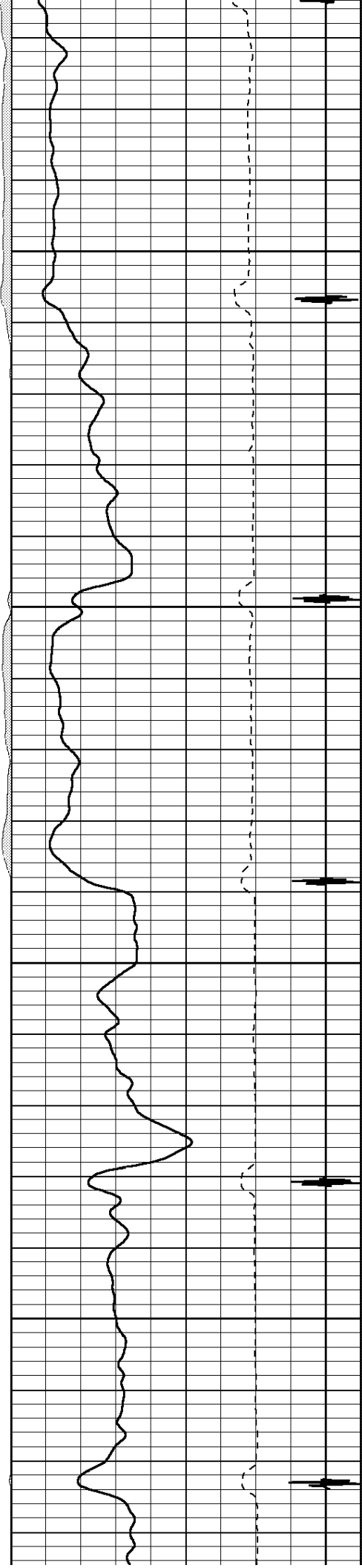


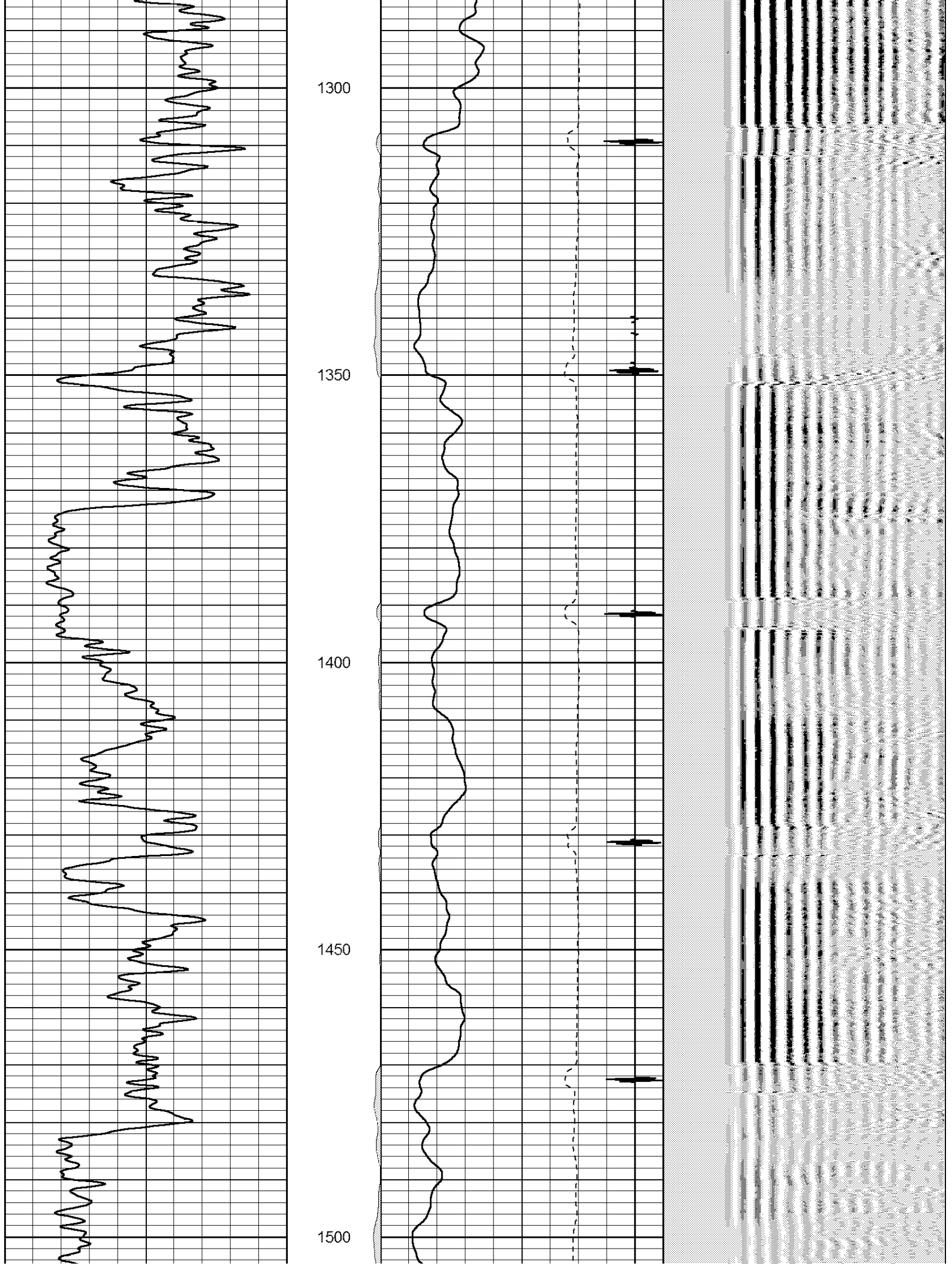
1100

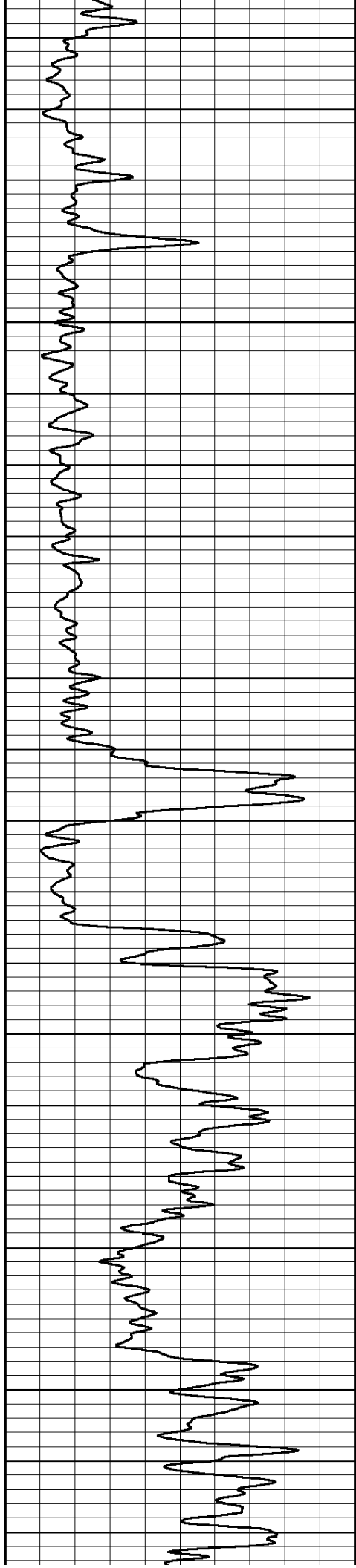
1150

1200

1250





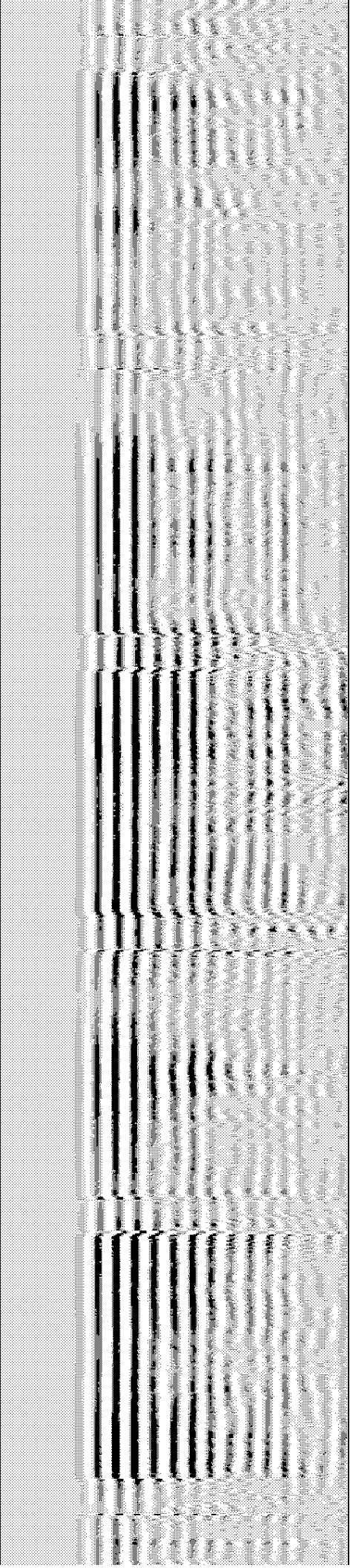
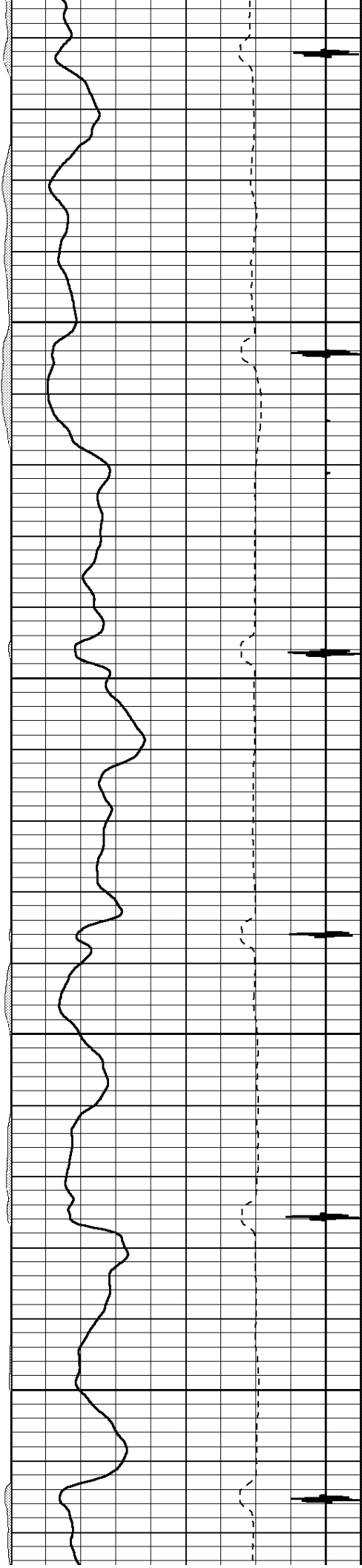


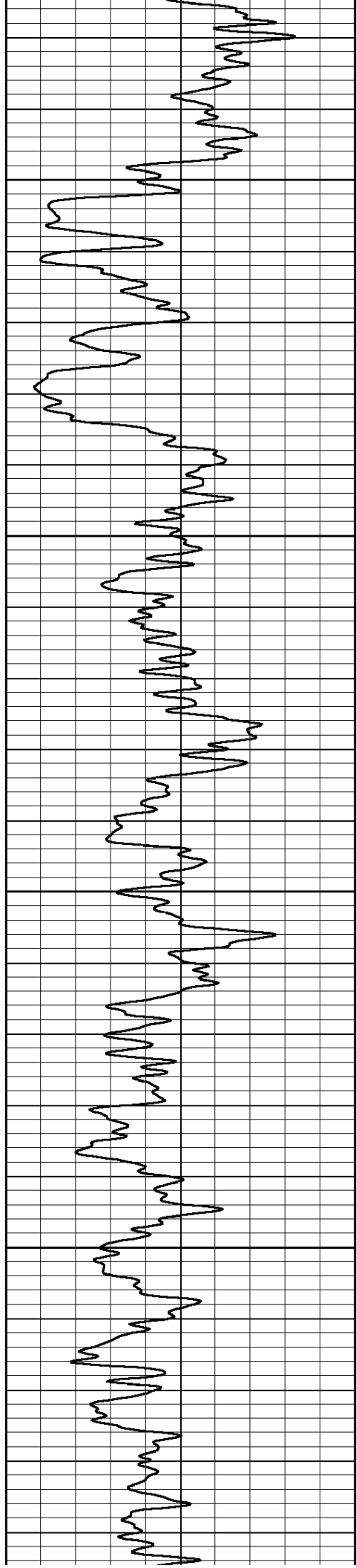
1550

1600

1650

1700



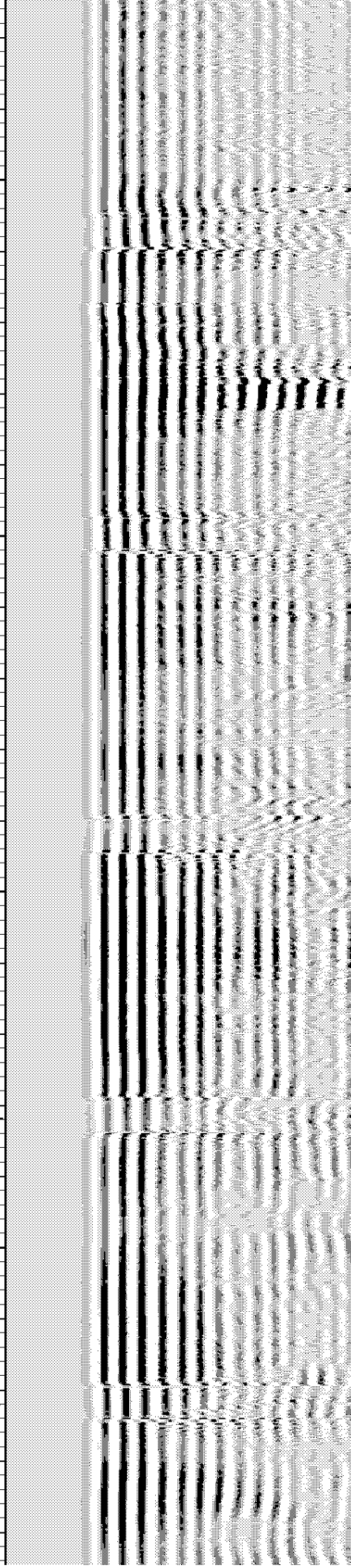
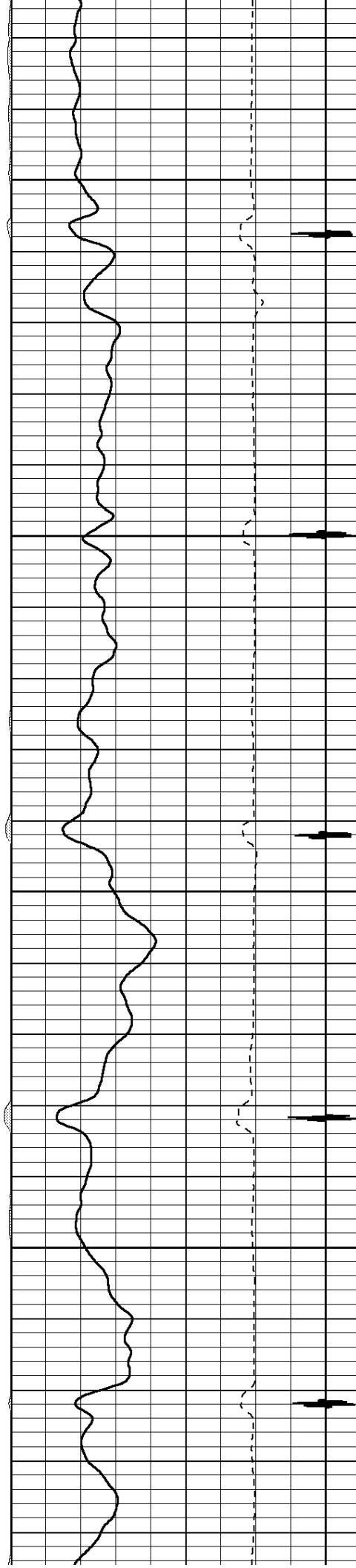


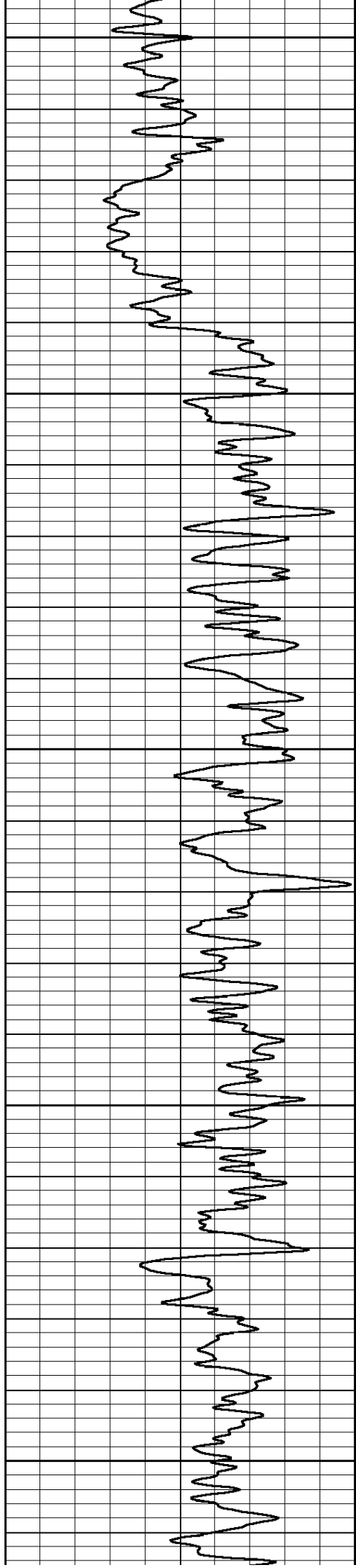
1750

1800

1850

1900





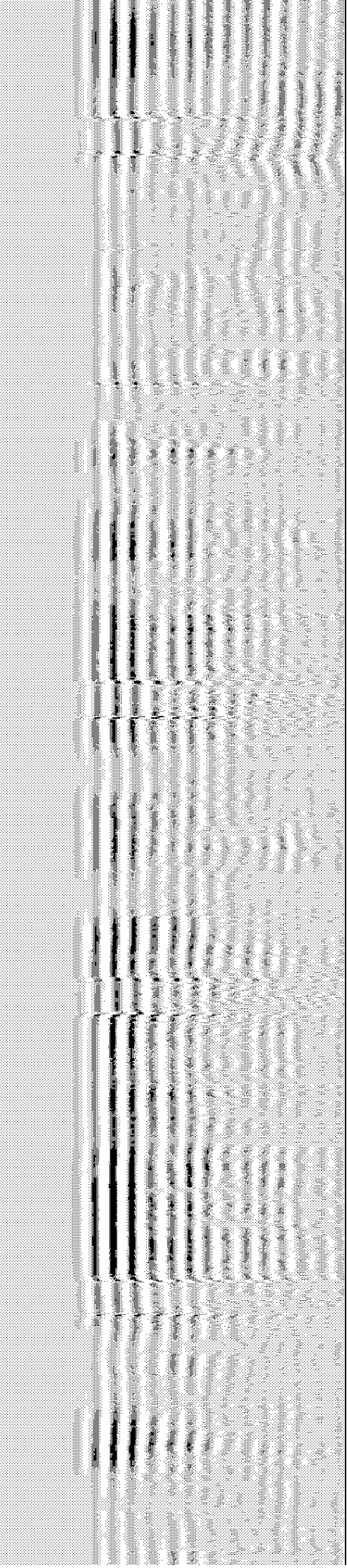
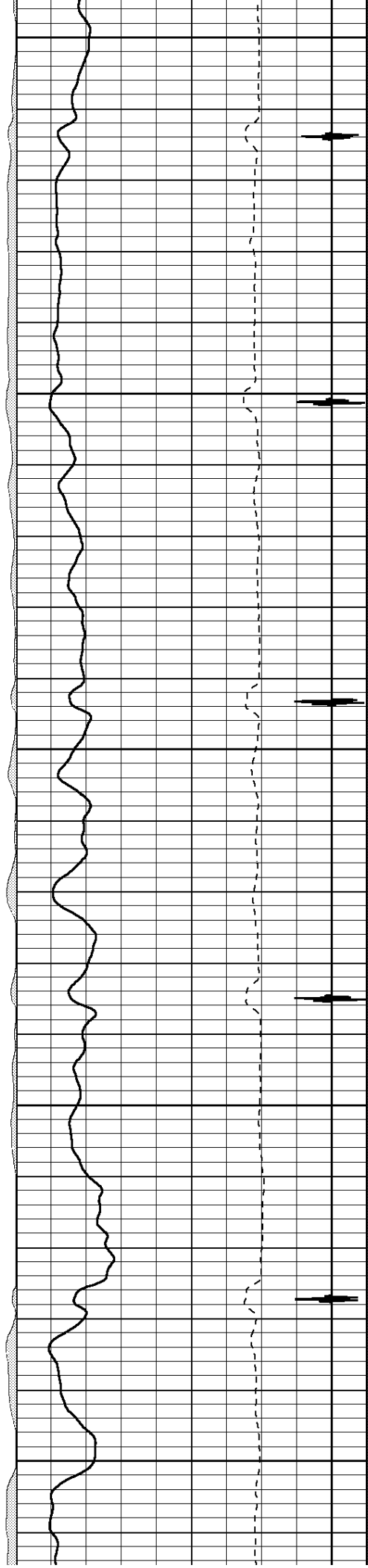
1950

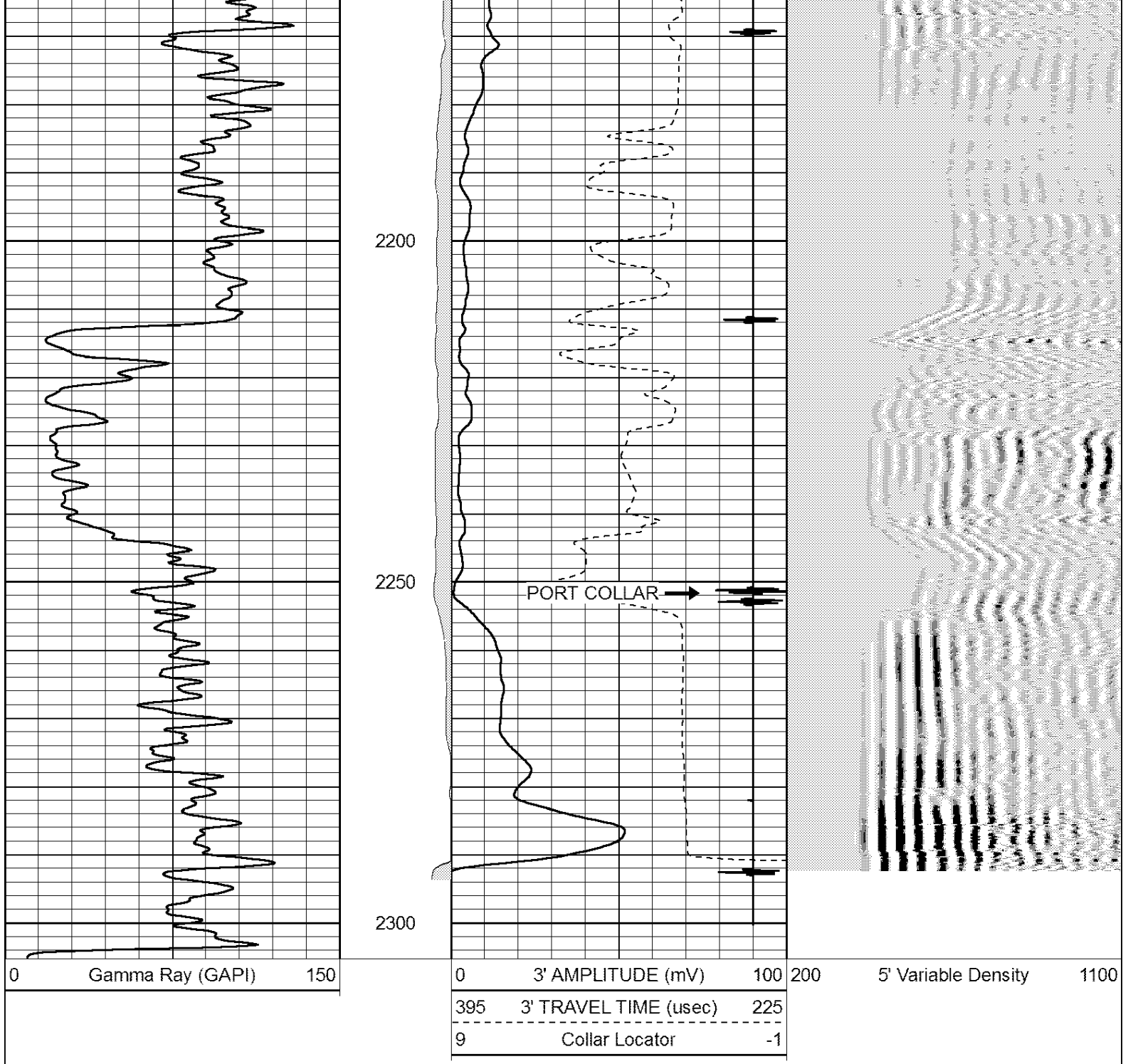
2000

2050

2100

2150



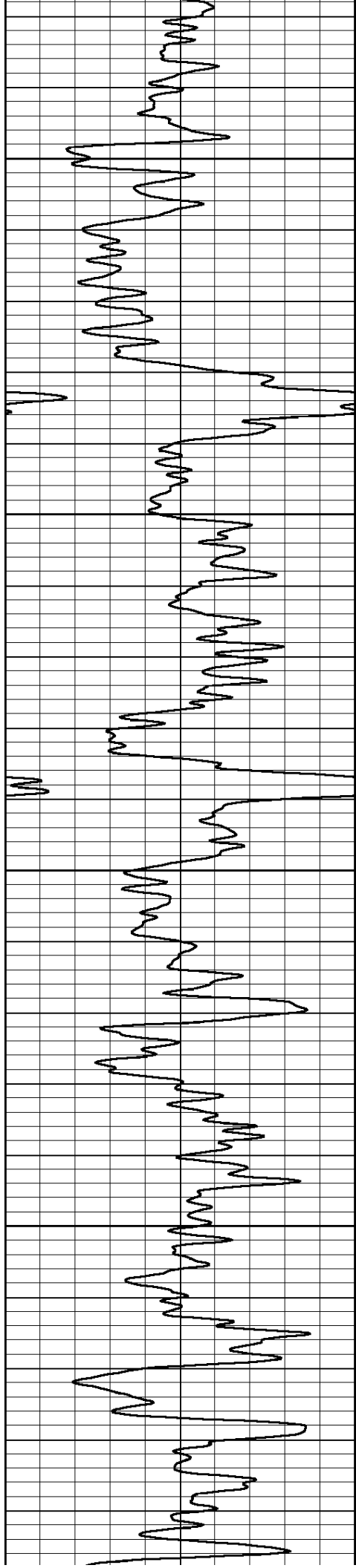


Perf-Tech
Wireline Services

MAIN PASS

Database File: june100822.db
 Dataset Pathname: pass3
 Presentation Format: 3x5
 Dataset Creation: Fri Jun 10 08:42:12 2022 by Log SCH 120126
 Charted by: Depth in Feet scaled 1:240

0	Gamma Ray (GAPI)	150	0	3' AMPLITUDE (mV)	100	200	5' Variable Density	1100
			395	3' TRAVEL TIME (usec)	225			
			9	Collar Locator	-1			

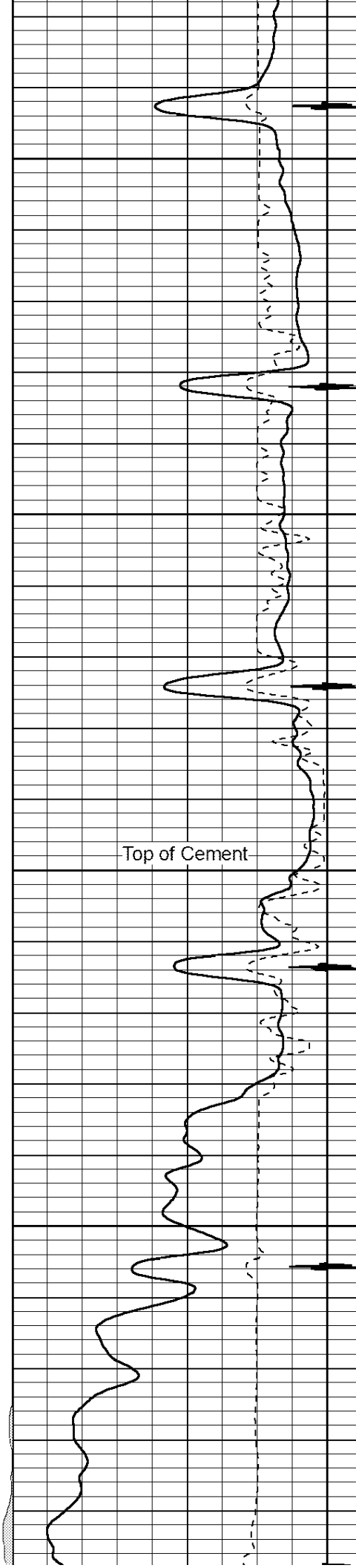


2800

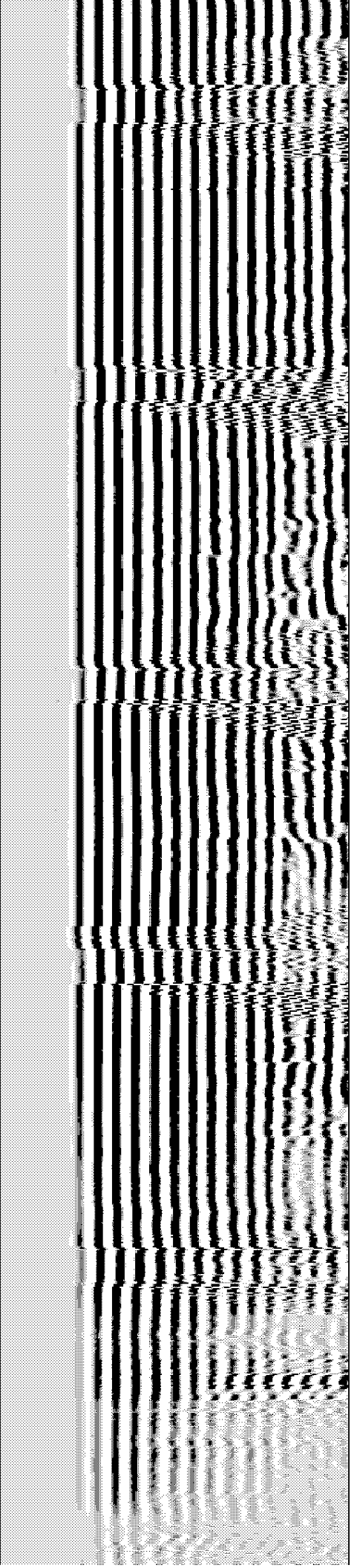
2850

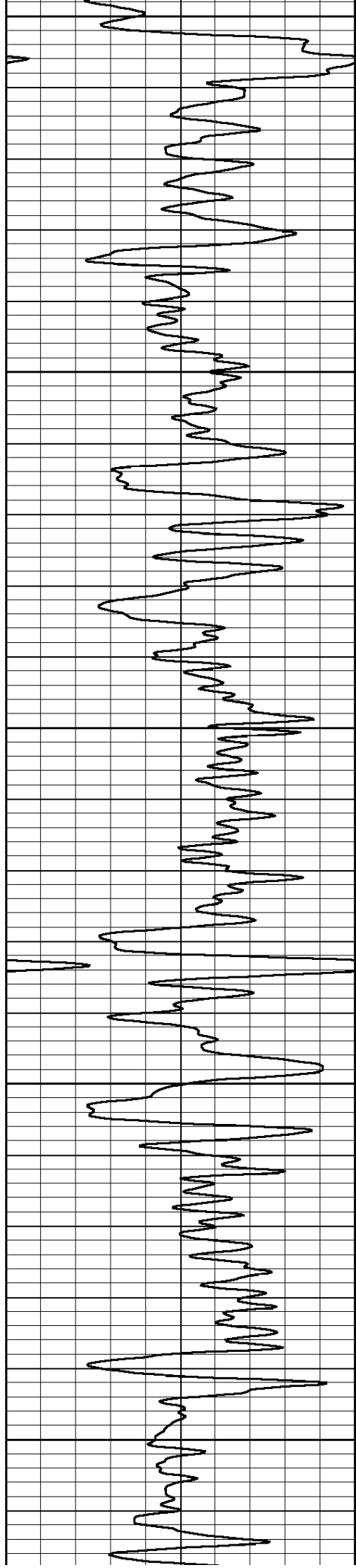
2900

2950

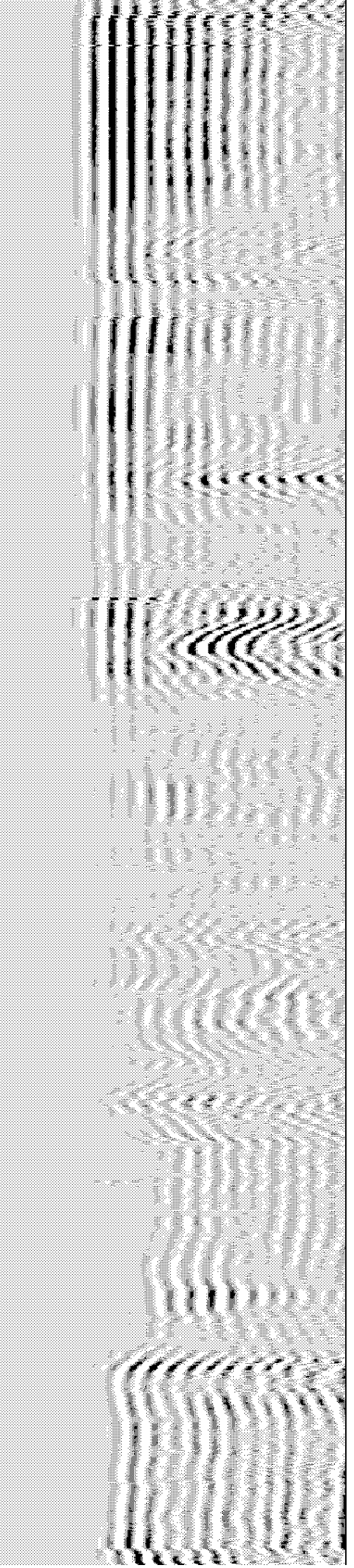


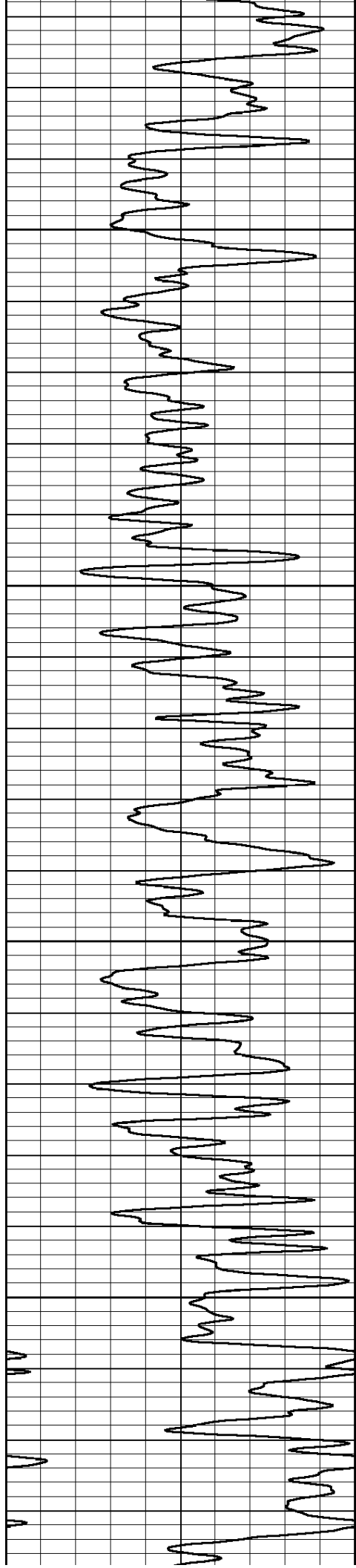
Top of Cement





3000
3050
3100
3150
3200



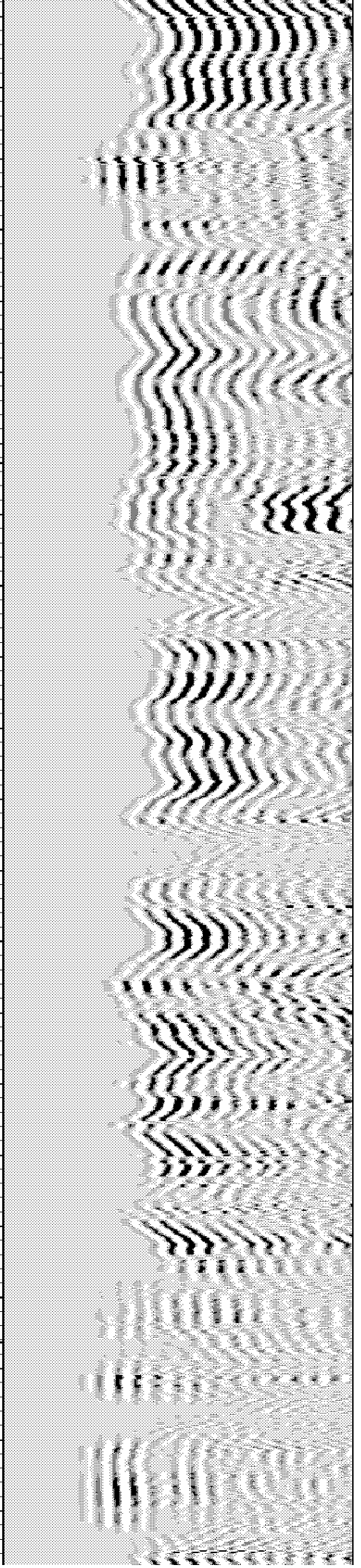
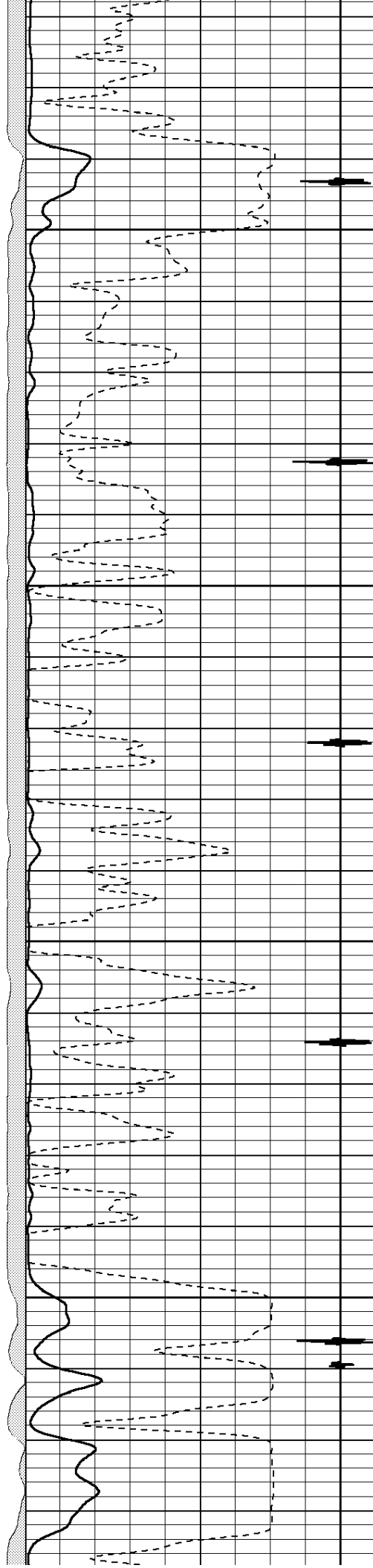


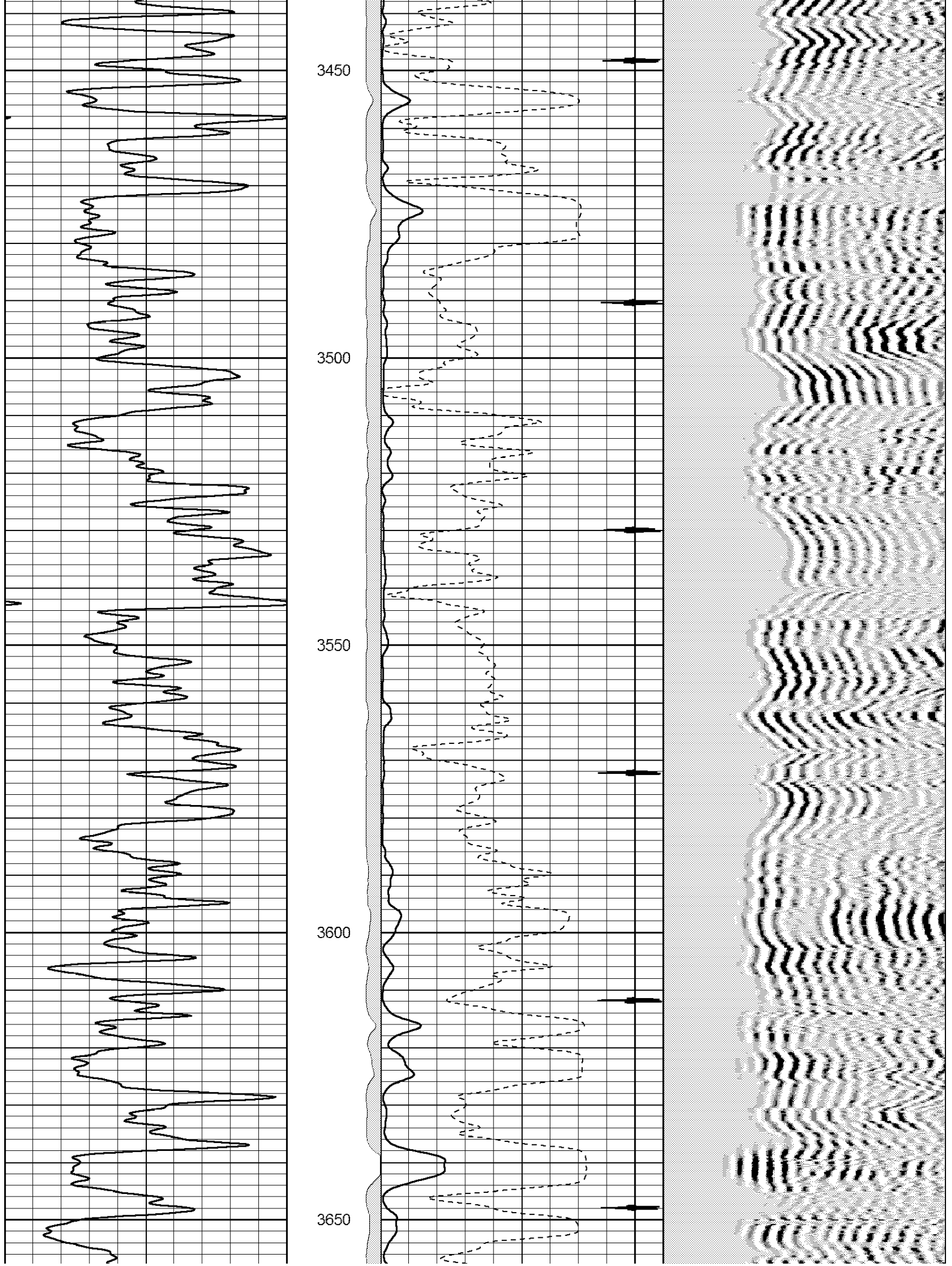
3250

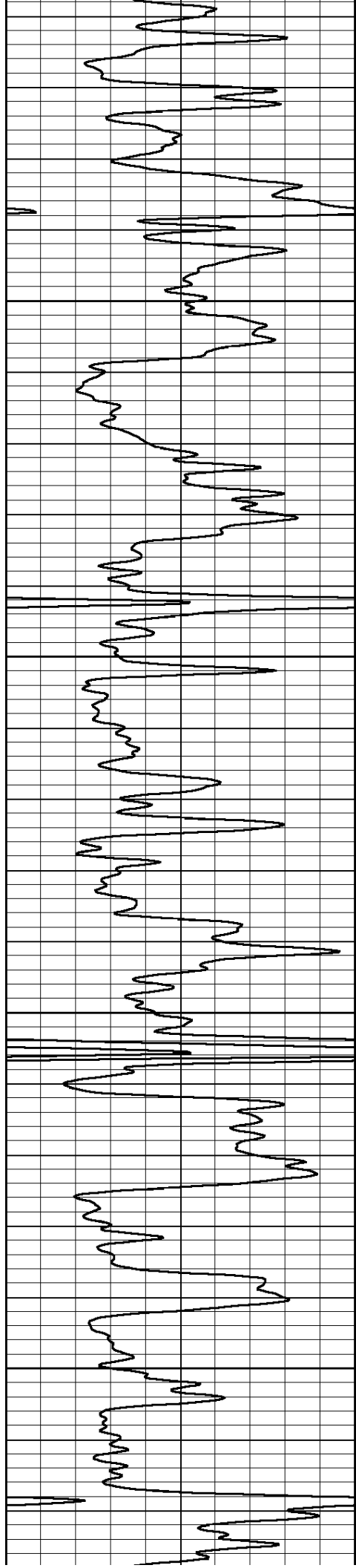
3300

3350

3400





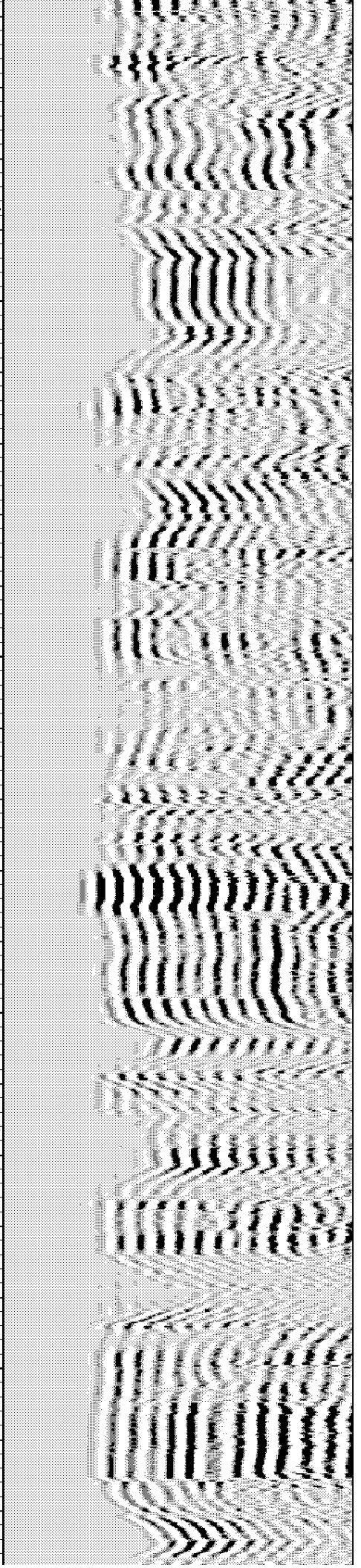
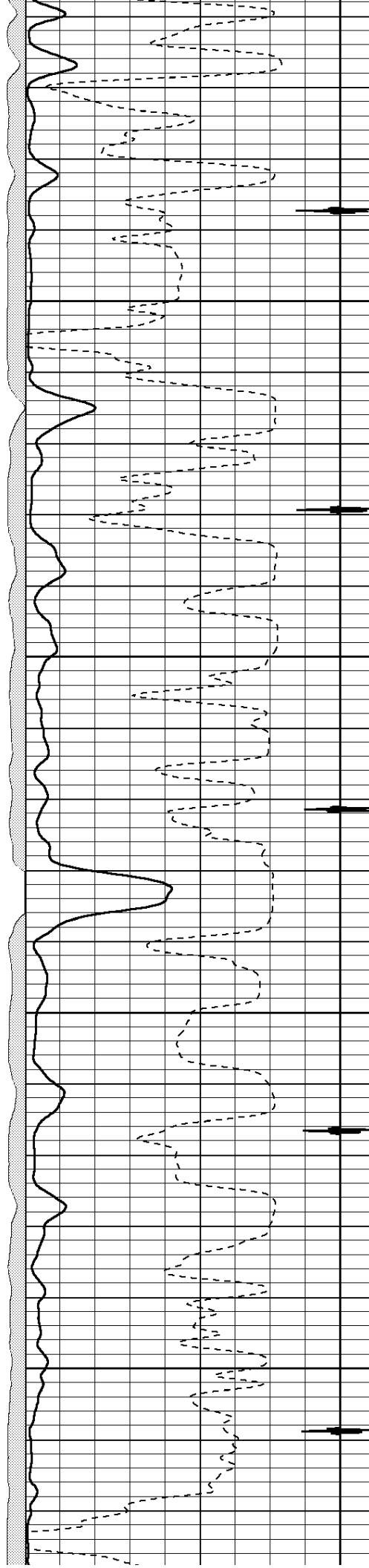


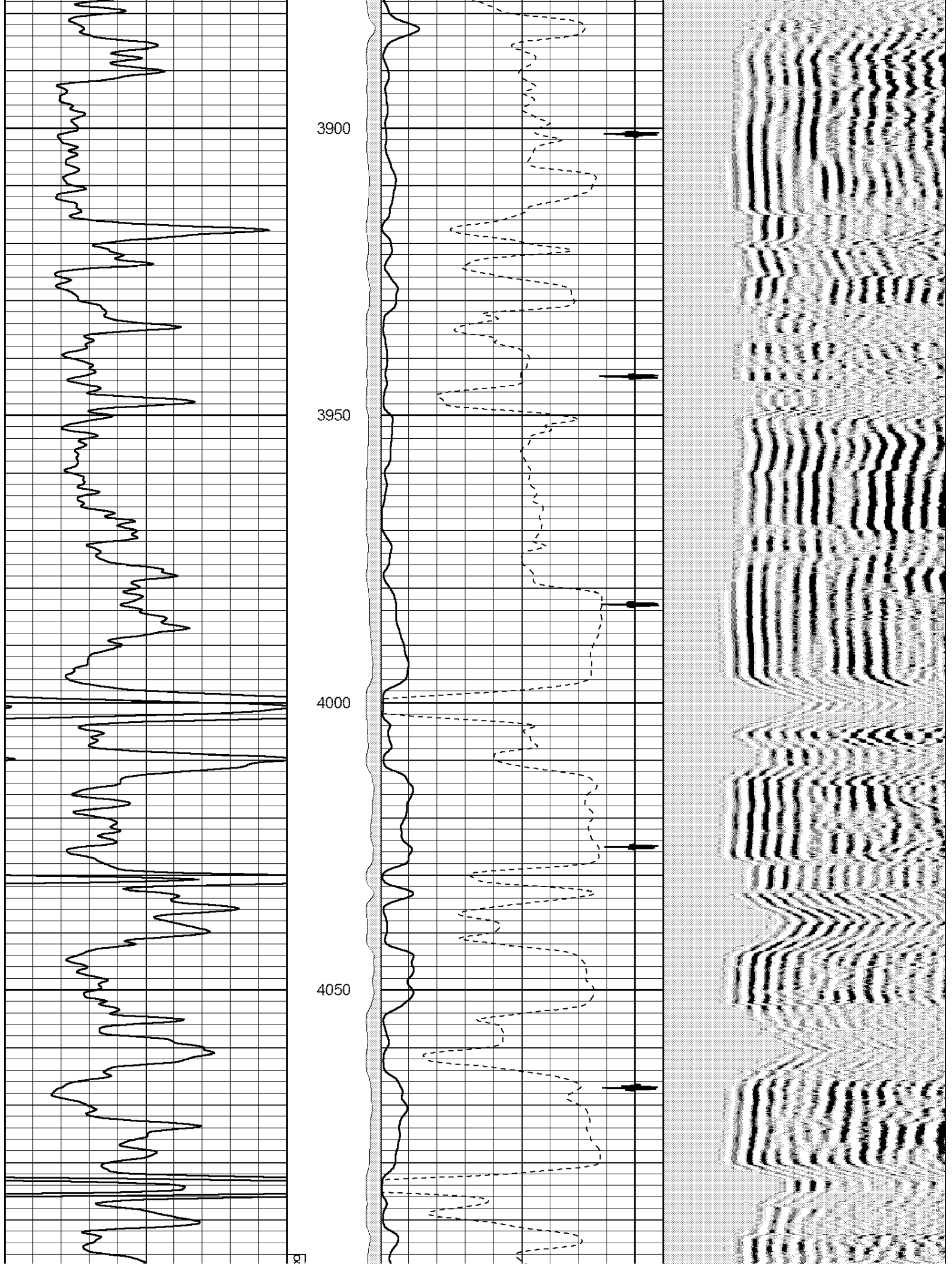
3700

3750

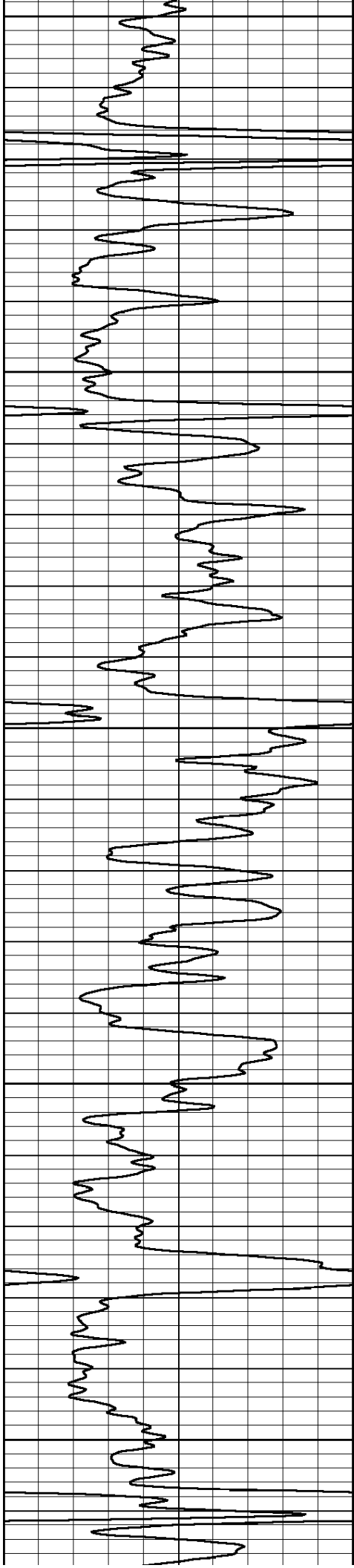
3800

3850





6' 4SPF
1.33

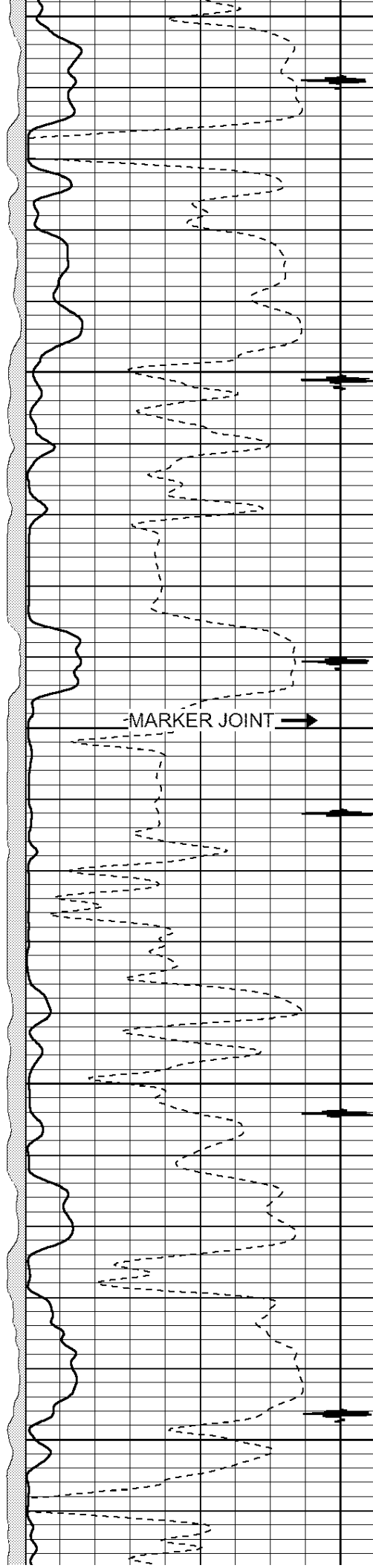


4150

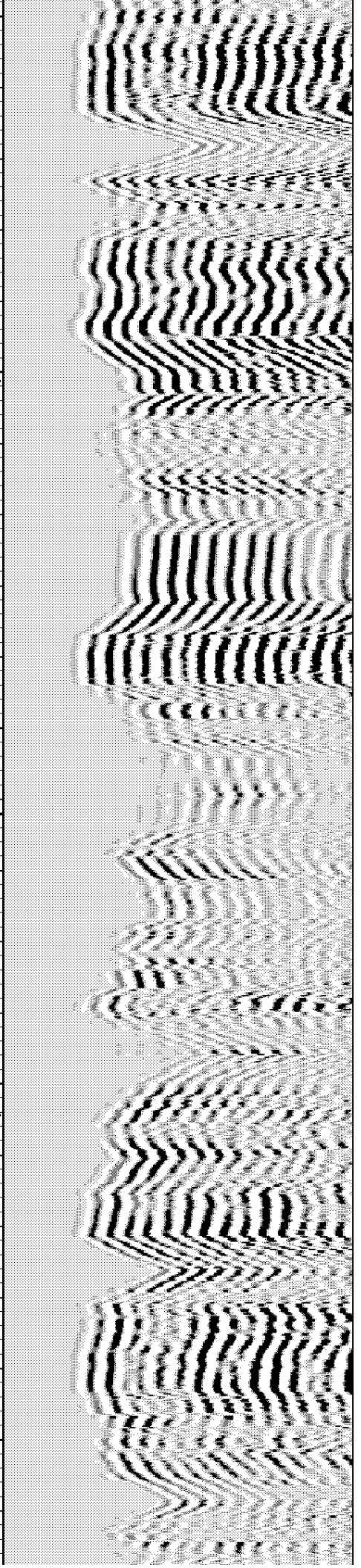
4200

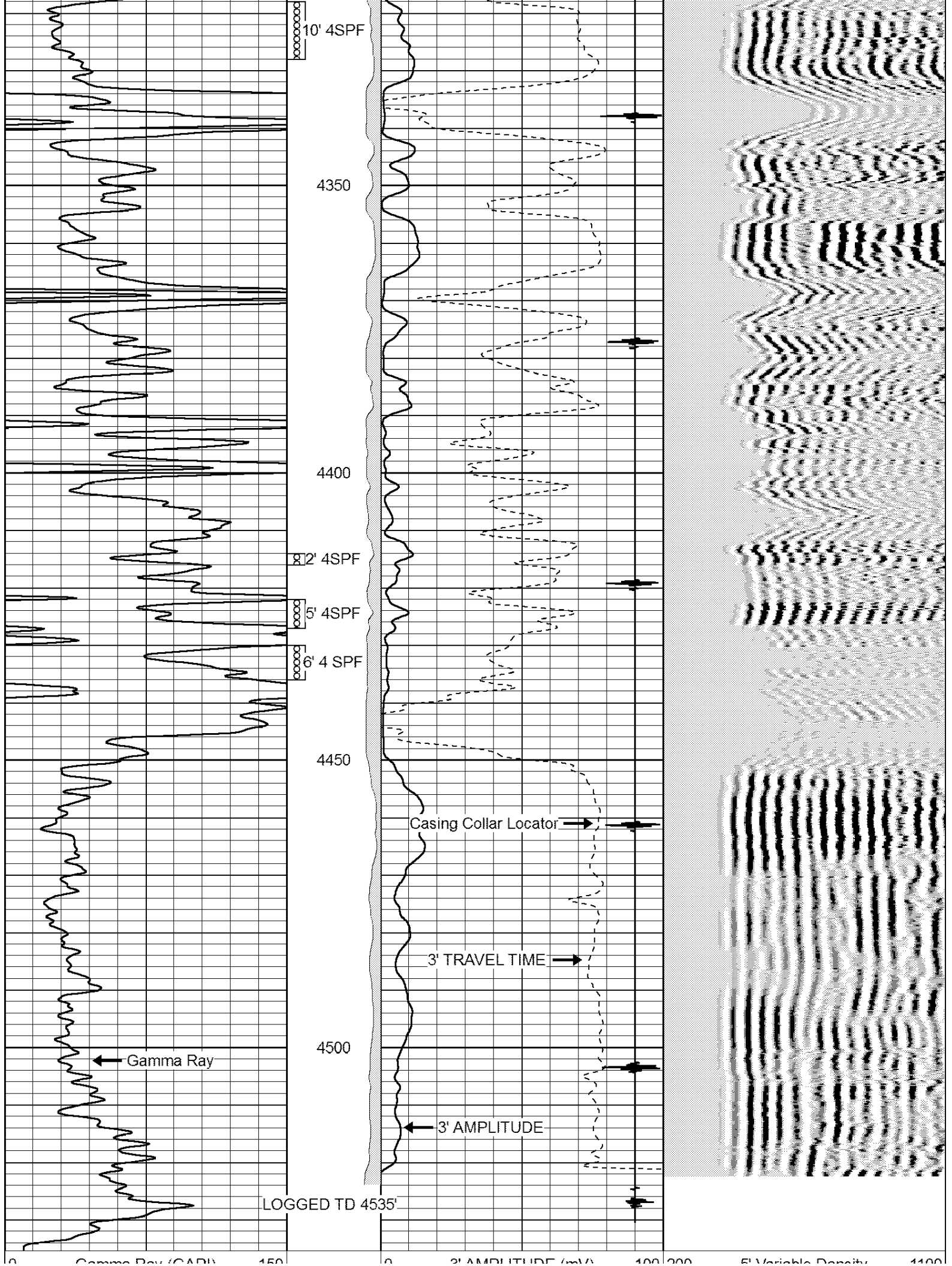
4250

4300



MARKER JOINT →





Gamma Ray (GAPI) 150

0 3' AMPLITUDE (mV) 100 200

5' Variable Density 1100

395 3' TRAVEL TIME (usec) 225

9 Collar Locator -1

Perf-Tech Wireline Services

REPEAT SECTION

Database File: june100822.db
 Dataset Pathname: pass2
 Presentation Format: 3x5
 Dataset Creation: Fri Jun 10 08:35:10 2022 by Log SCH 120126
 Charted by: Depth in Feet scaled 1:240

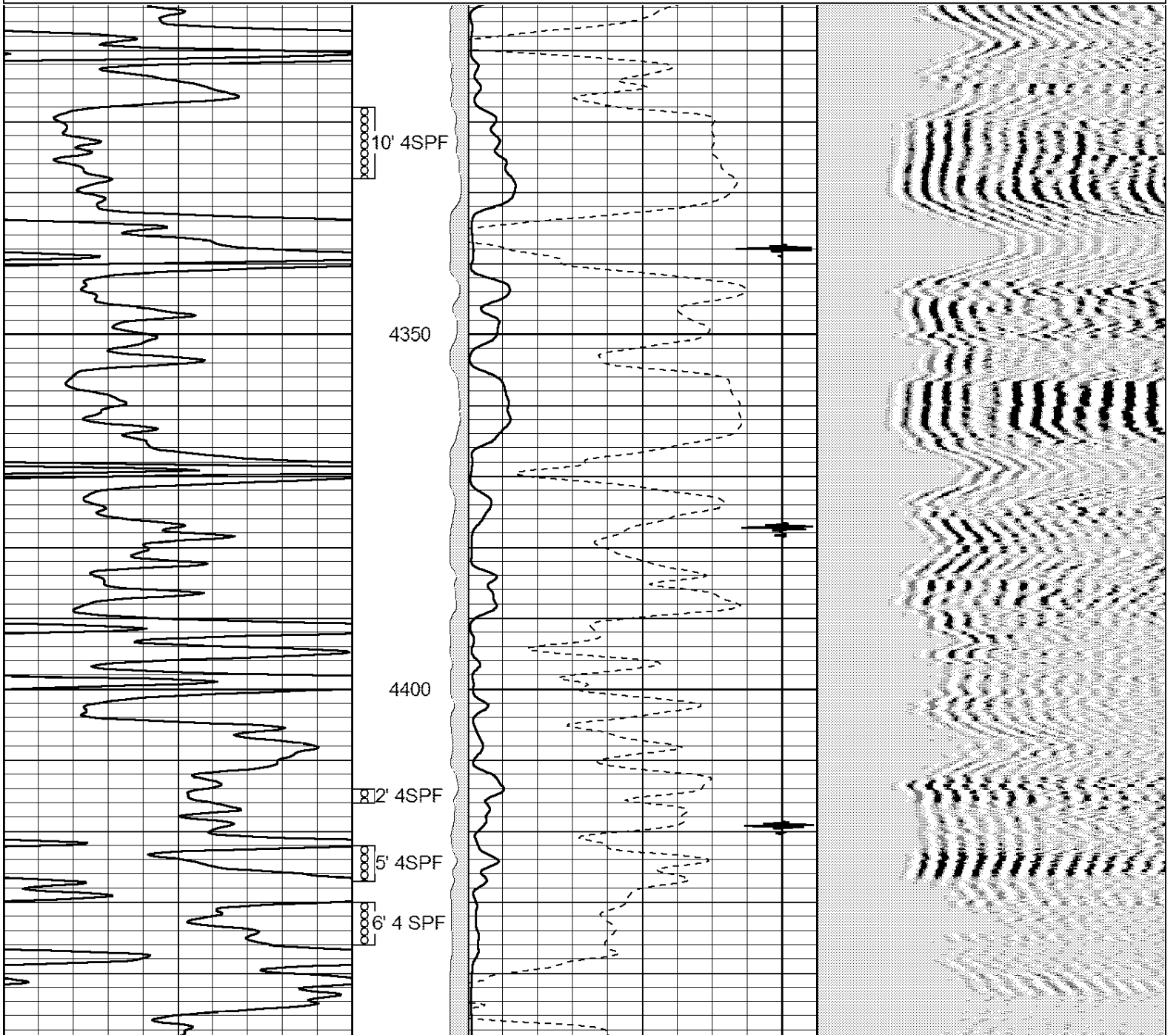
0 Gamma Ray (GAPI) 150

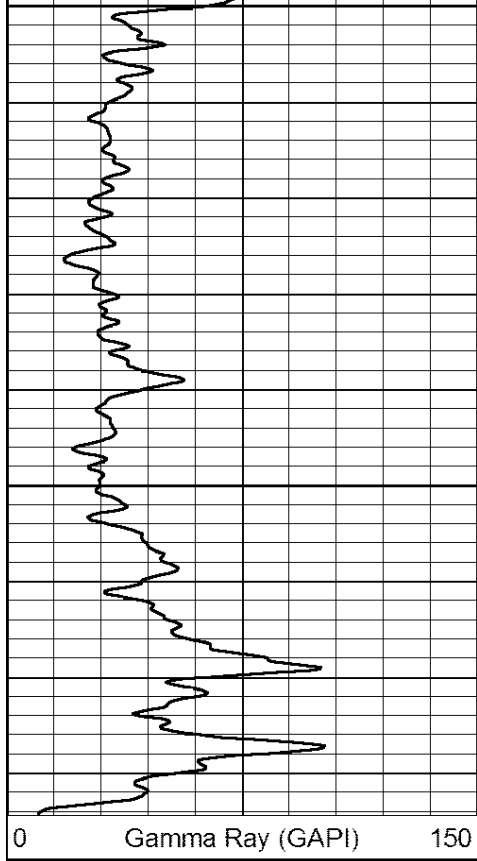
0 3' AMPLITUDE (mV) 100 200

200 5' Variable Density 1100

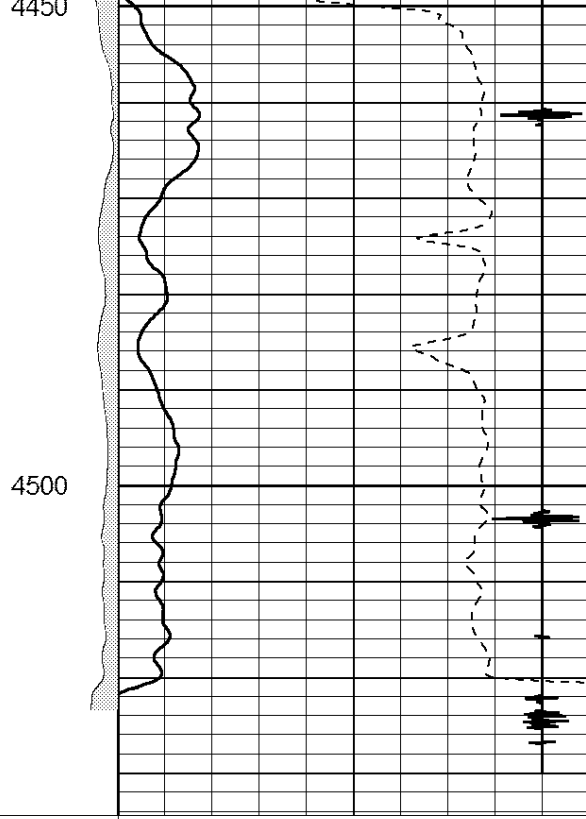
395 3' TRAVEL TIME (usec) 225

9 Collar Locator -1





0 Gamma Ray (GAPI) 150

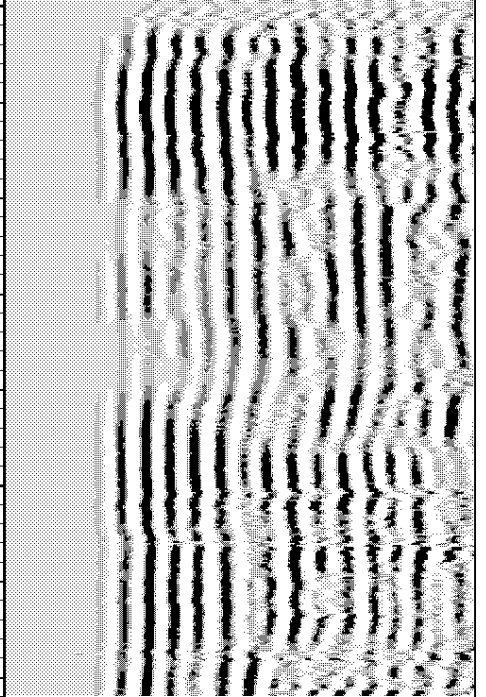


4450
4500

0 3' AMPLITUDE (mV) 100

395 3' TRAVEL TIME (usec) 225

9 Collar Locator -1



200 5' Variable Density 1100