



DUAL INDUCTION LOG

Company PALOMINO PETROLEUM
 Well SHARP DRESSED MAN #1
 Field N/A
 County GOVE
 State KS

Company PALOMINO PETROLEUM
 Well SHARP DRESSED MAN #1
 Field N/A
 County GOVE State KS

Location: API #: 15 063 22411
 713' FSL & 628' FEL
 SEC 16 TWP 14S RGE 30W
 Permanent Datum Ground Level Elevation 2742
 Log Measured From KB 11' AGL
 Drilling Measured From KB
 Other Services
 CDNL
 ML
 Elevation
 K.B. 2753
 D.F. 2751
 G.L. 2742

Date	6/04/22
Run Number	One
Depth Driller	4600
Depth Logger	4598
Bottom Logged Interval	4596
Top Log Interval	00
Casing Driller	8 5/8" @ 226
Casing Logger	226
Bit Size	7 7/8"
Type Fluid in Hole	Chemical
Density / Viscosity	9.2/52
pH / Fluid Loss	10.5/8.0
Source of Sample	Pit
Rm @ Meas. Temp	.9@70degf
Rmf @ Meas. Temp	.68@70degf
Rmc @ Meas. Temp	1.08@70degf
Source of Rmf / Rmc	Calculated
Rm @ BHT	.49@127degf
Time Circulation Stopped	3:00 P.M.
Time Logger on Bottom	5:00 PM
Maximum Recorded Temperature	129degf
Equipment Number	T605
Location	Hays, KS
Recorded By	GUS PFANENSTIEL
Witnessed By	RYAN SEIB

<<< Fold Here >>>

All interpretations are opinions based on inferences from electrical or other measurements and we cannot and do not guarantee the accuracy or correctness of any interpretation, and we shall not, except in the case of gross or willful negligence on our part, be liable or responsible for any loss, costs, damages, or expenses incurred or sustained by anyone resulting from any interpretation made by any of our officers, agents or employees. These interpretations are also subject to our general terms and conditions set out in our current Price Schedule.

Comments

SOUTH OF GOVE TO I RD. WEST TO 28 RD
 NORTH 2 MILES, WEST INTO.
 Thank You for using Gemini Wireline LLC
 785-625-1182



MAIN PASS

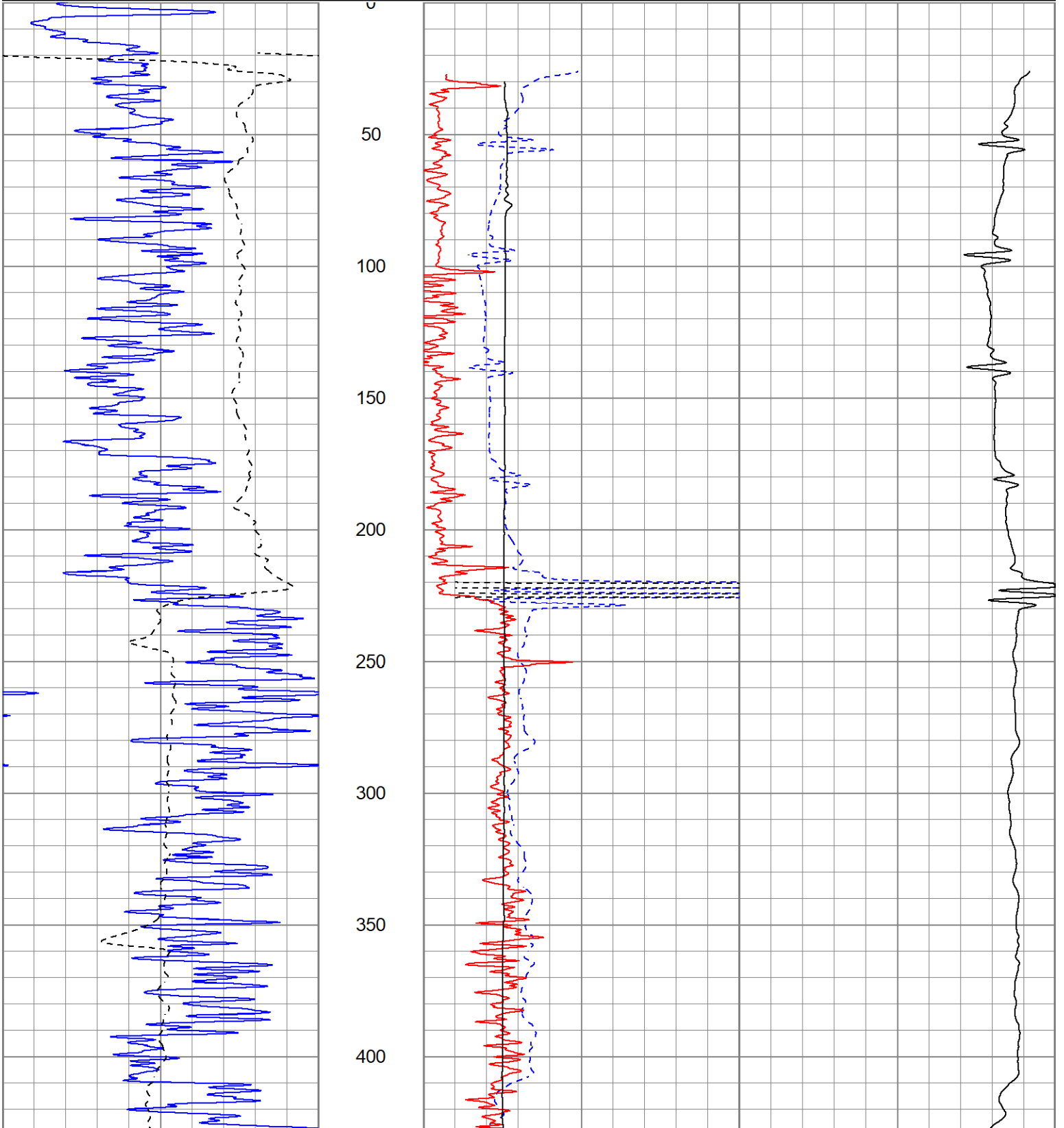
Database File ppsharpdressedman#1oh.db
 Dataset Pathname pass3.1
 Presentation Format kdiillinn
 Dataset Creation Sat Jun 04 18:18:57 2022
 Charted by Depth in Feet scaled 1:600

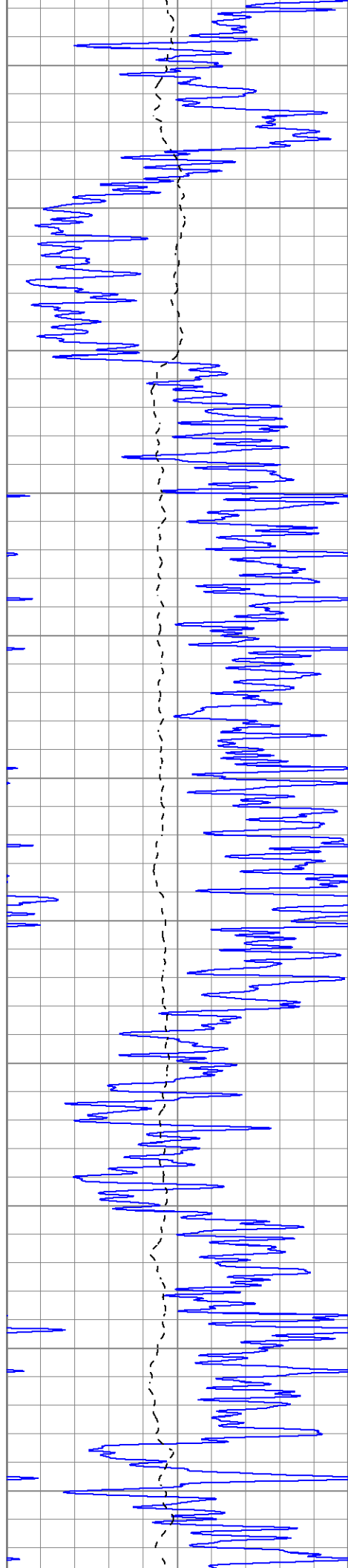
0	GR (GAPI)	150	1000	CILD (mmho/m)	0
-100	SP (mV)	100	10000	LTEN (lb)	0

0	RILD (Ohm-m)	50			
0	RLL3 (Ohm-m)	50			

50	RILD x 10 (Ohm-m)	500			

50	RLL3 x 10 (Ohm-m)	500			





450

500

550

600

650

700

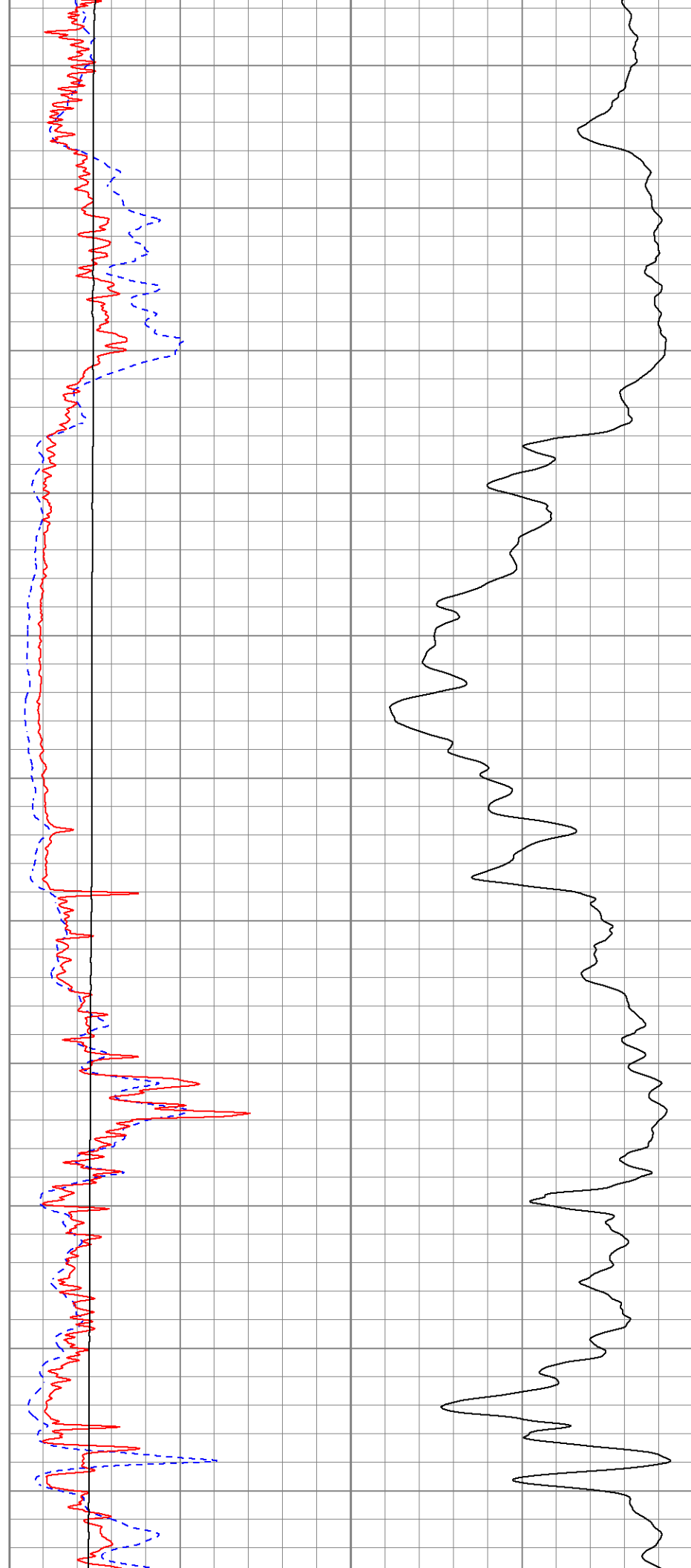
750

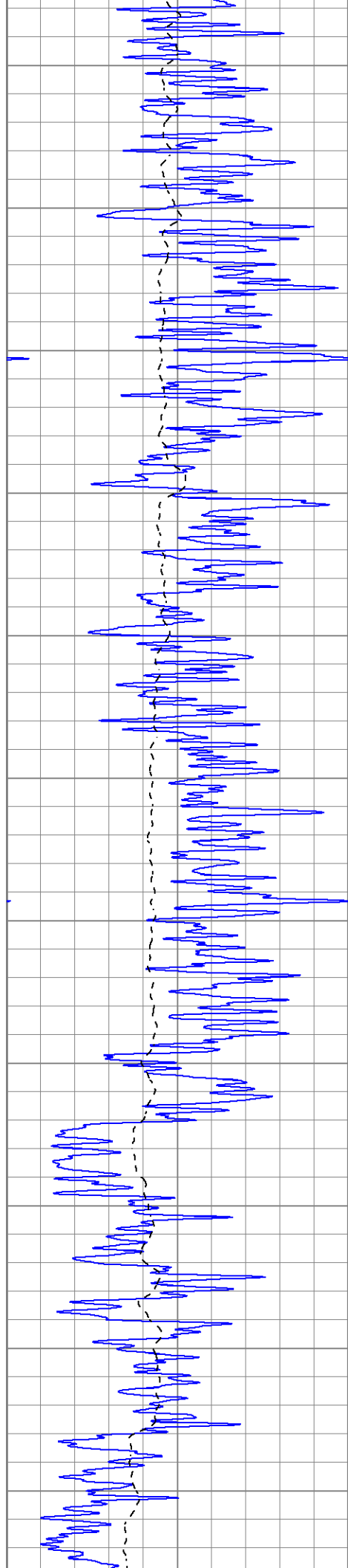
800

850

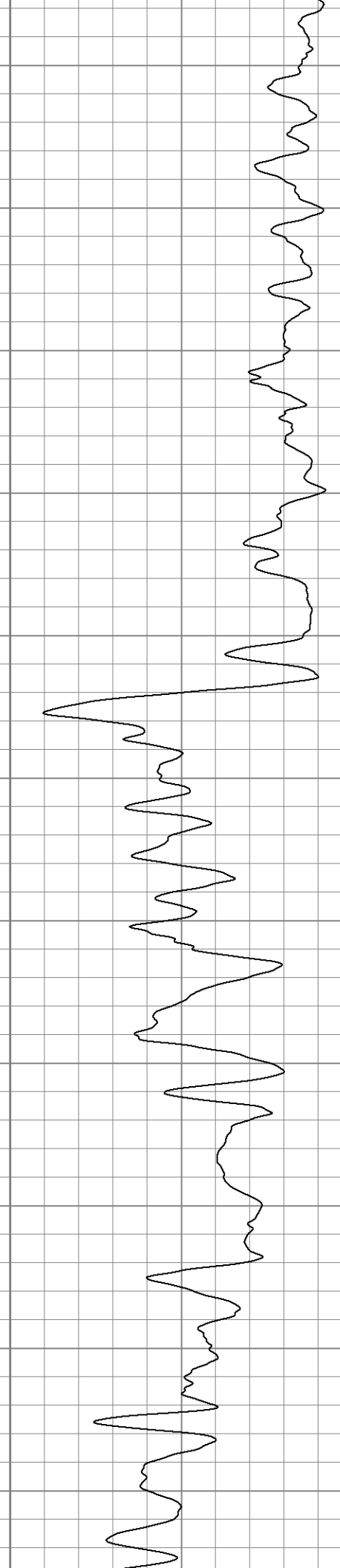
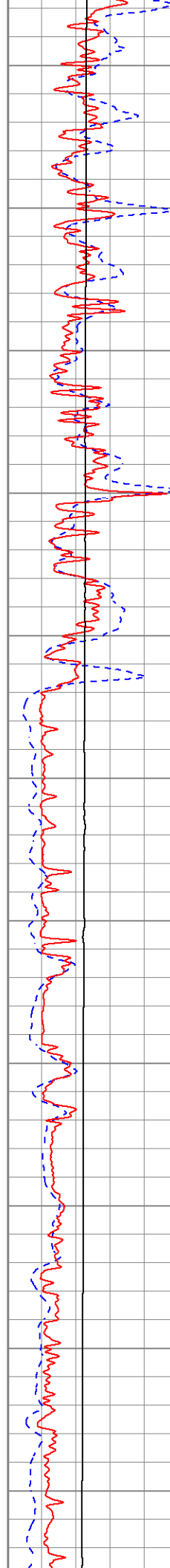
900

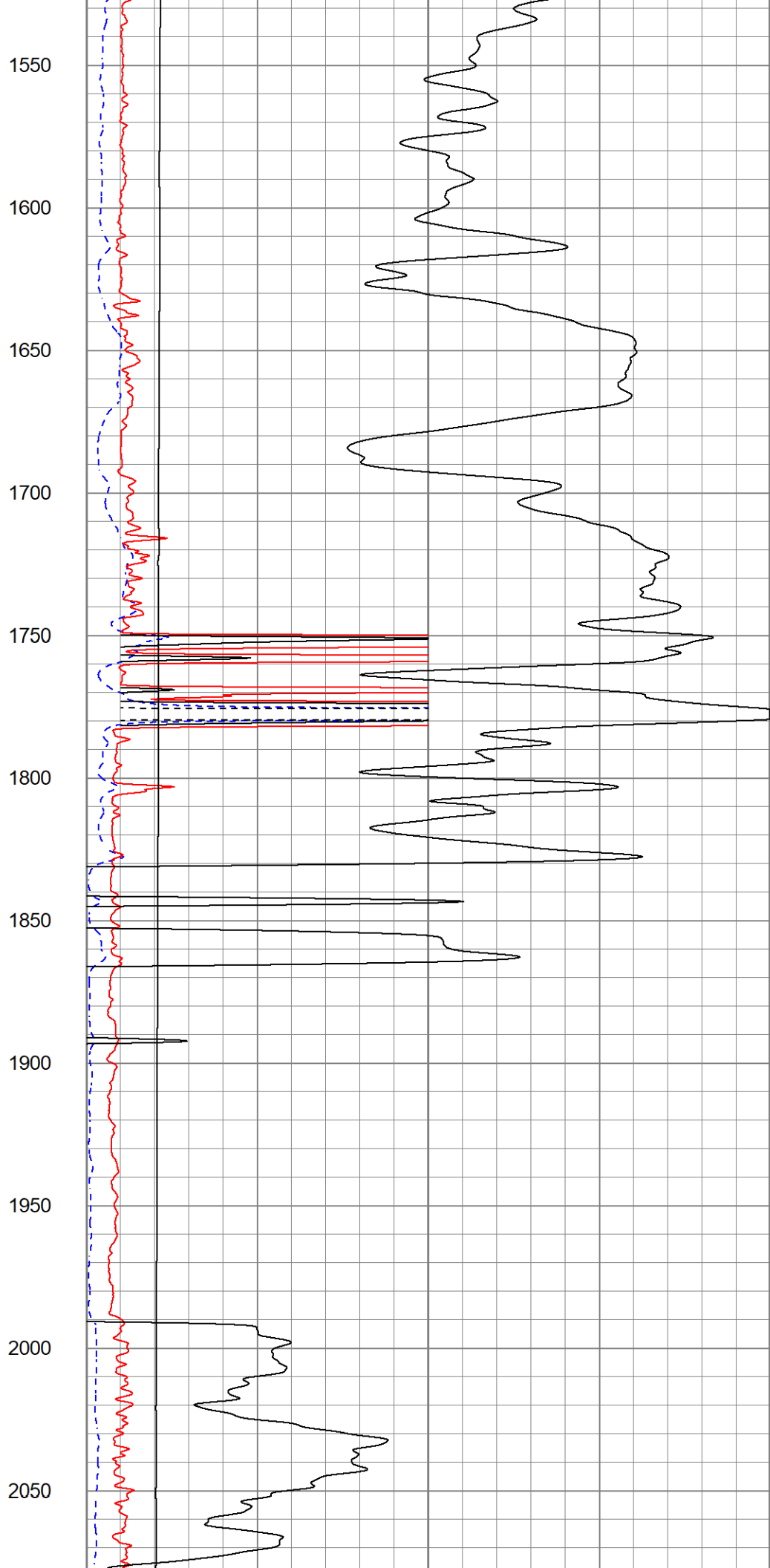
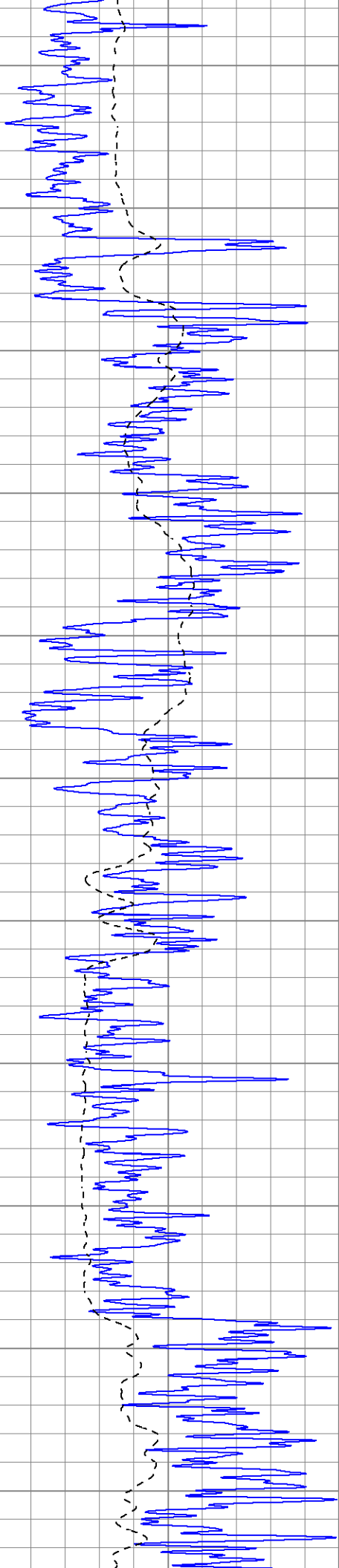
950

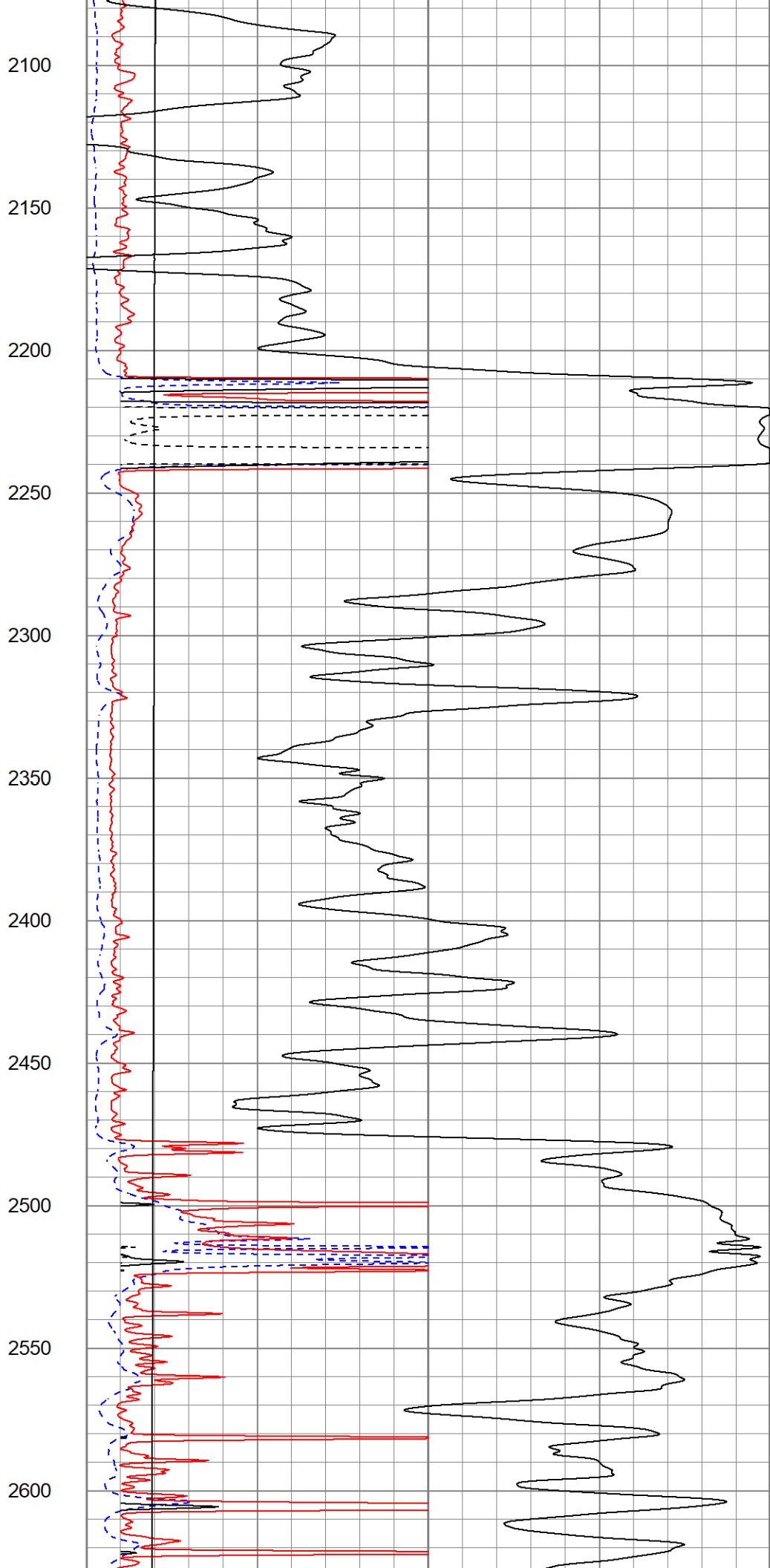
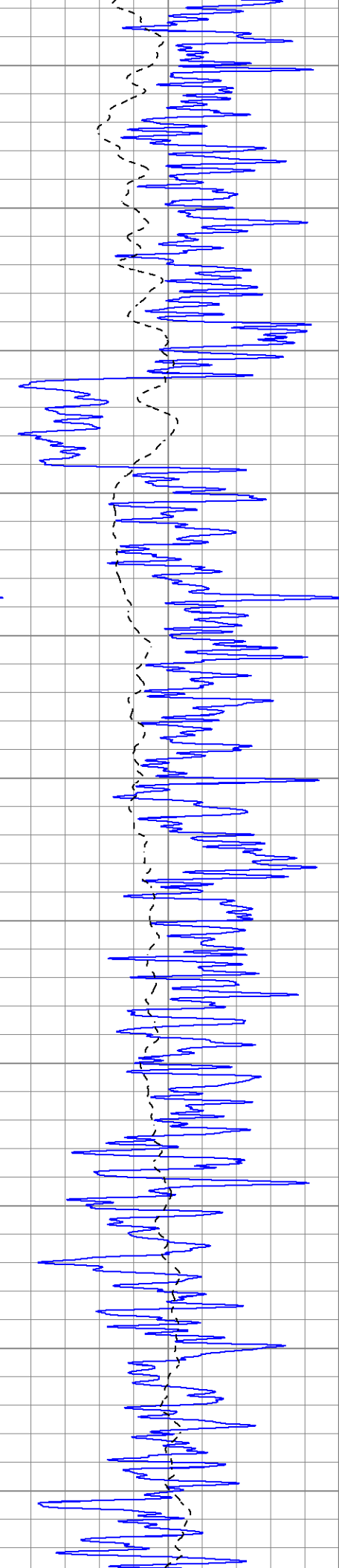


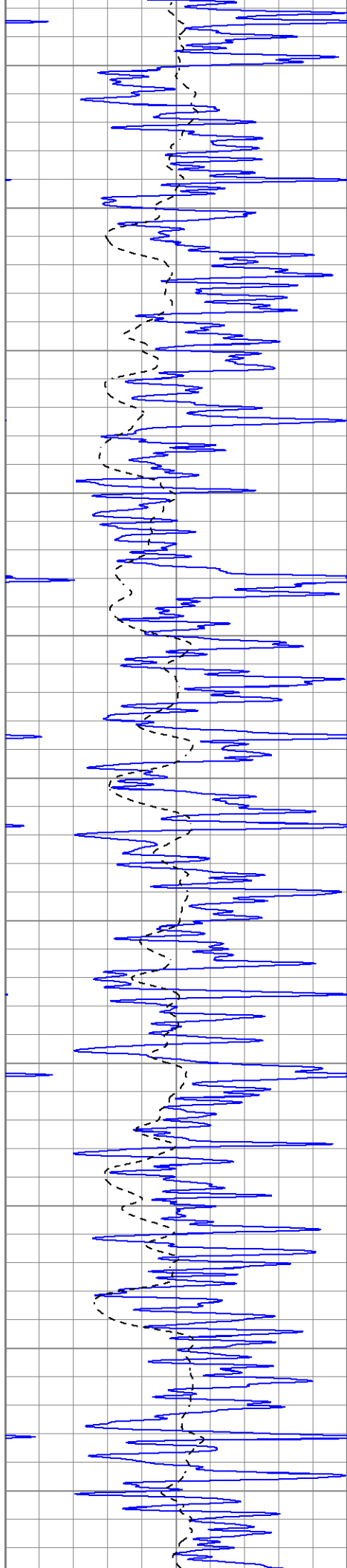


1000
1050
1100
1150
1200
1250
1300
1350
1400
1450
1500









2650

2700

2750

2800

2850

2900

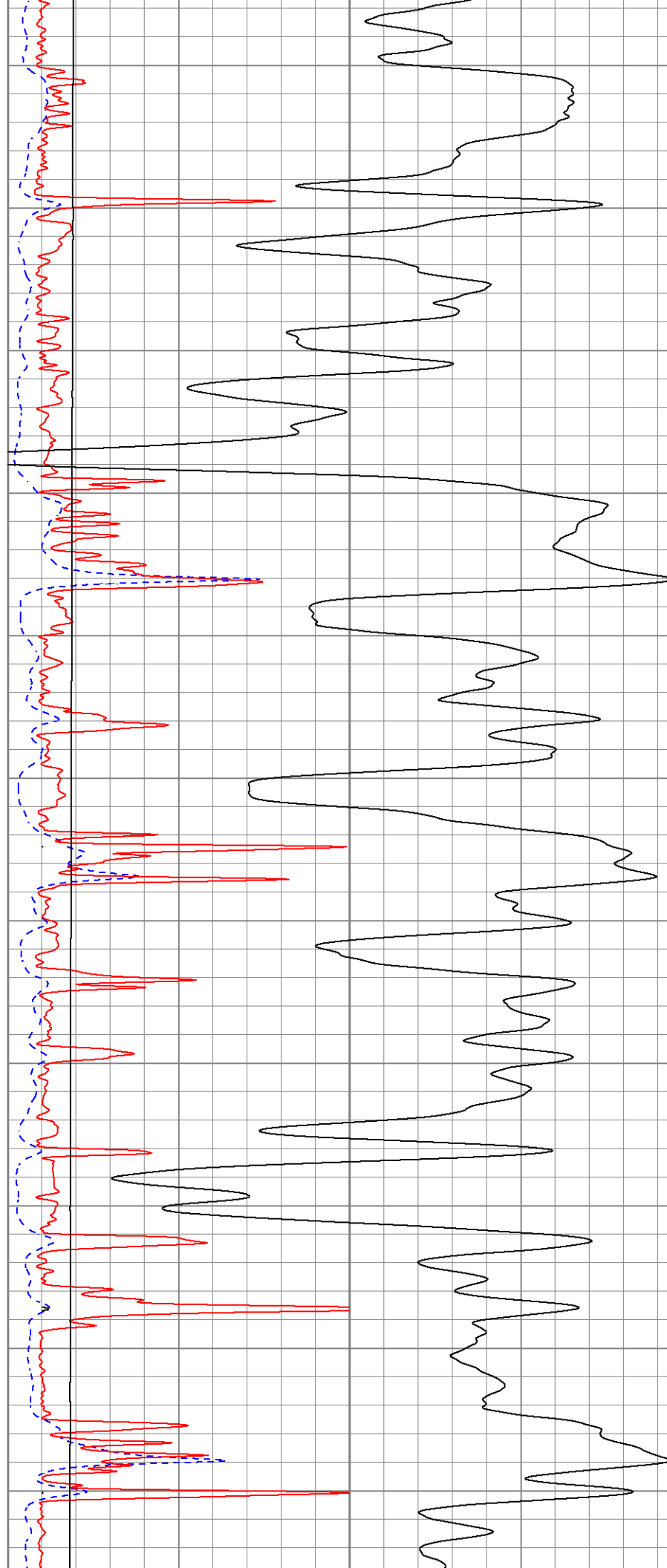
2950

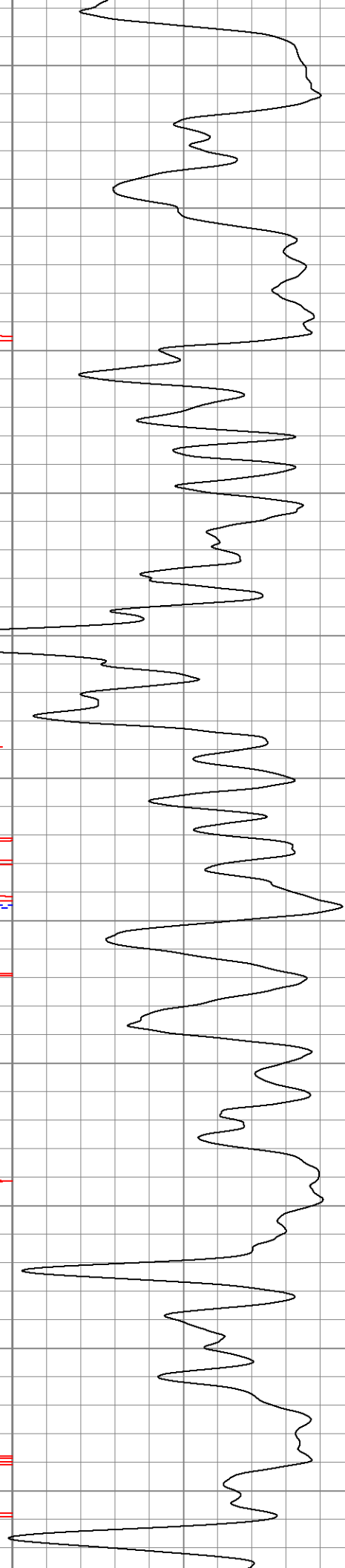
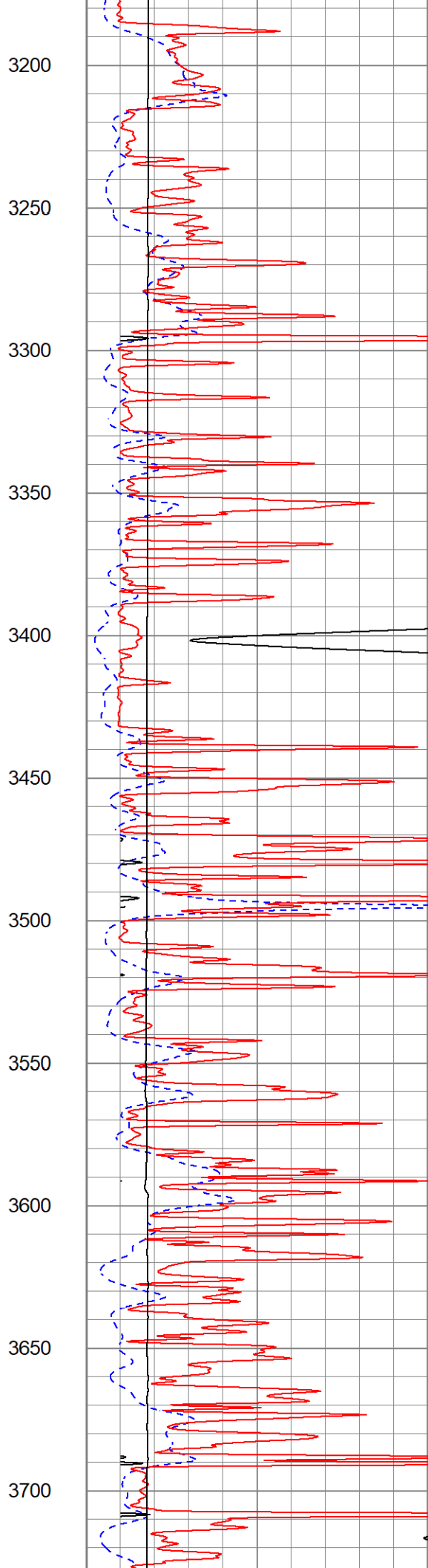
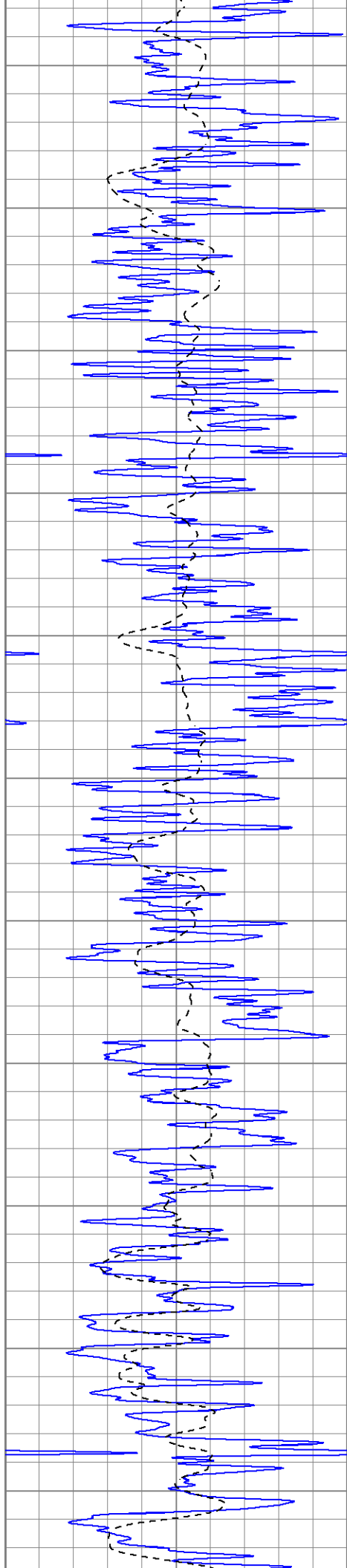
3000

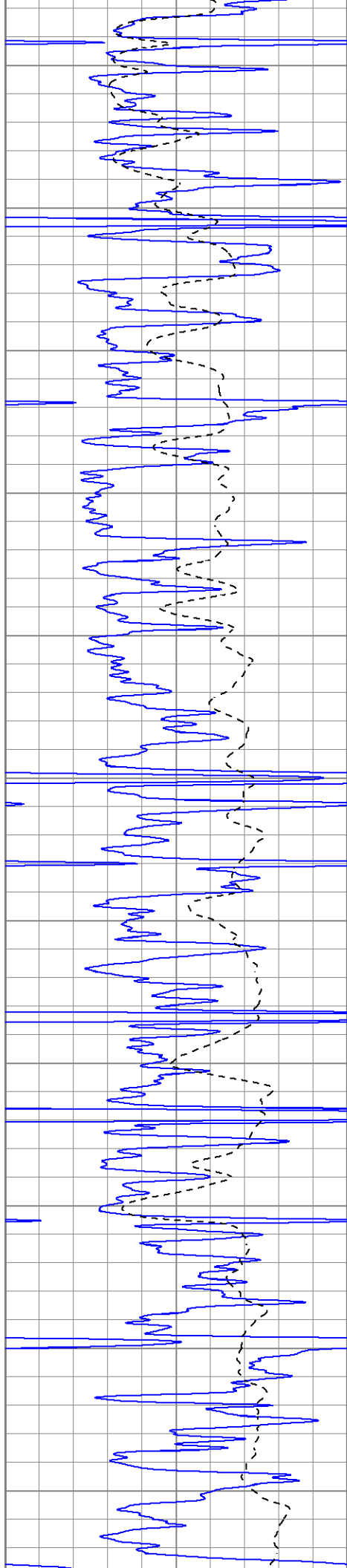
3050

3100

3150







3750

3800

3850

3900

3950

4000

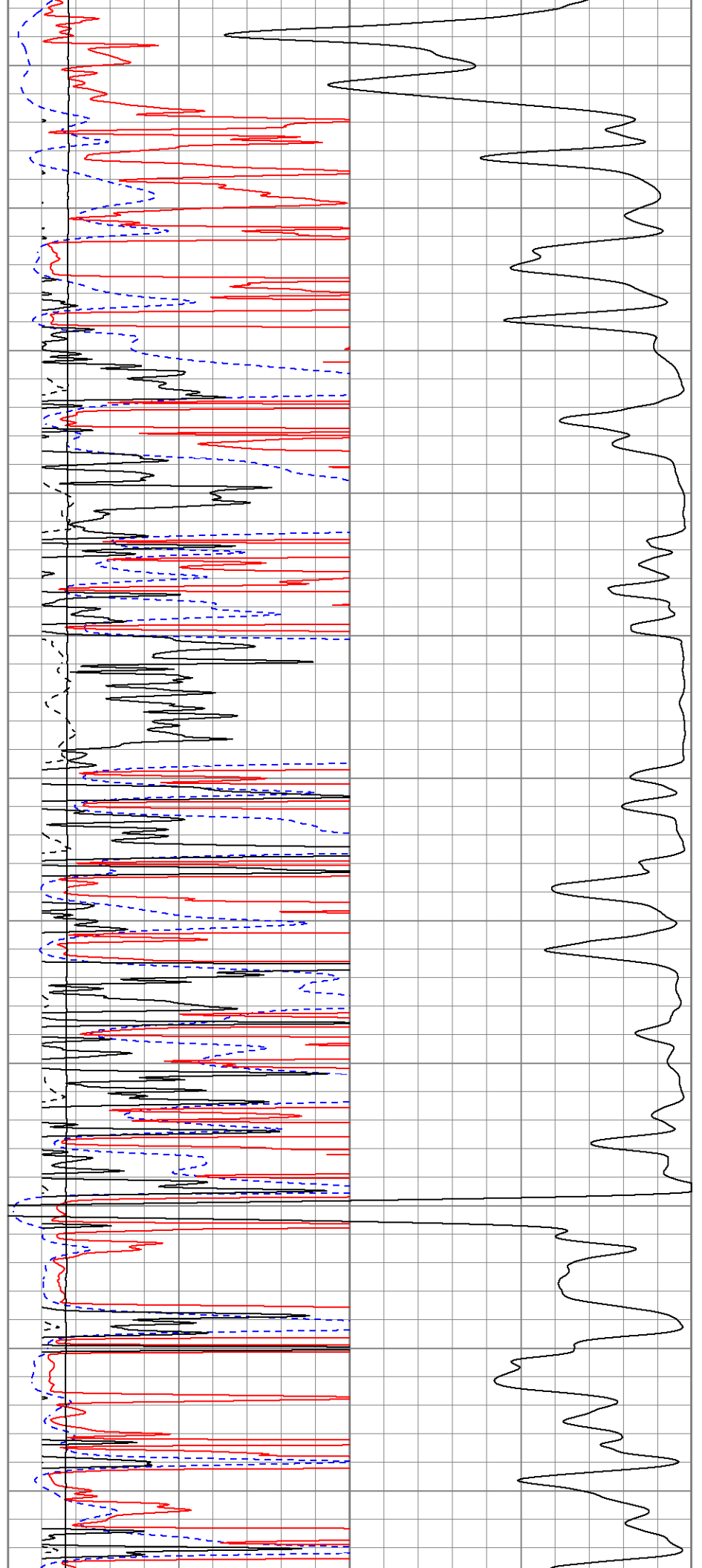
4050

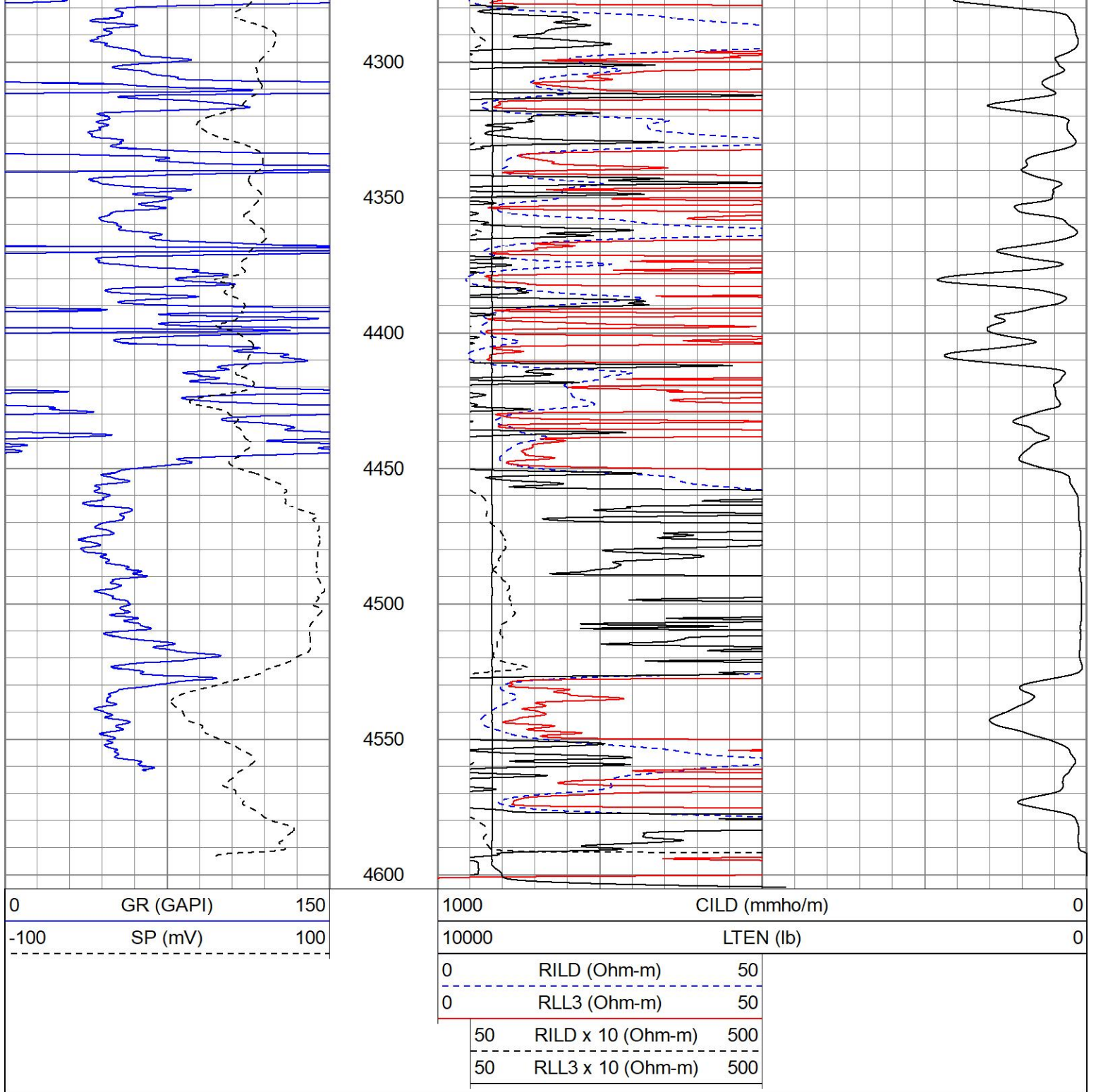
4100

4150

4200

4250

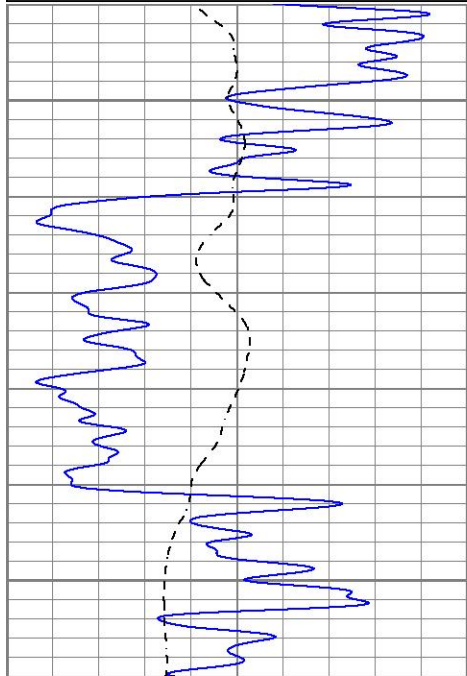




MAIN PASS

Database File ppsharpdressedman#1oh.db
 Dataset Pathname pass3.1
 Presentation Format kdil
 Dataset Creation Sat Jun 04 18:18:57 2022
 Charted by Depth in Feet scaled 1:240

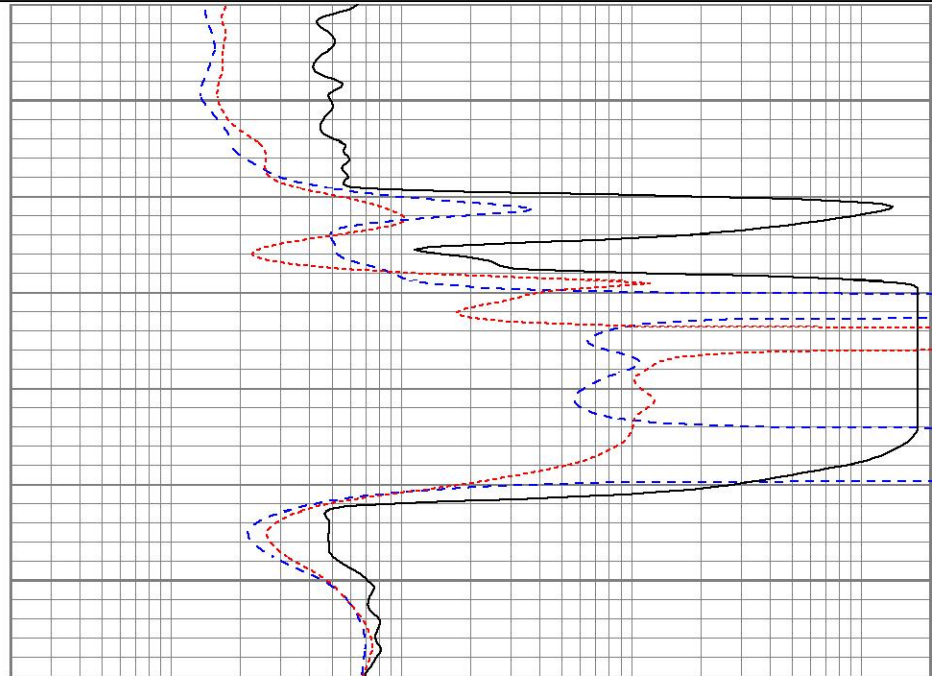
0	GR (GAPI)	150	0.2	RILD (Ohm-m)	2000
-100	SP (mV)	100	0.2	RLL3 (Ohm-m)	2000
			0.2	RILM (Ohm-m)	2000



2200

2250

0	GR (GAPI)	150
-100	SP (mV)	100



0.2	RILD (Ohm-m)	2000
0.2	RLL3 (Ohm-m)	2000
0.2	RILM (Ohm-m)	2000

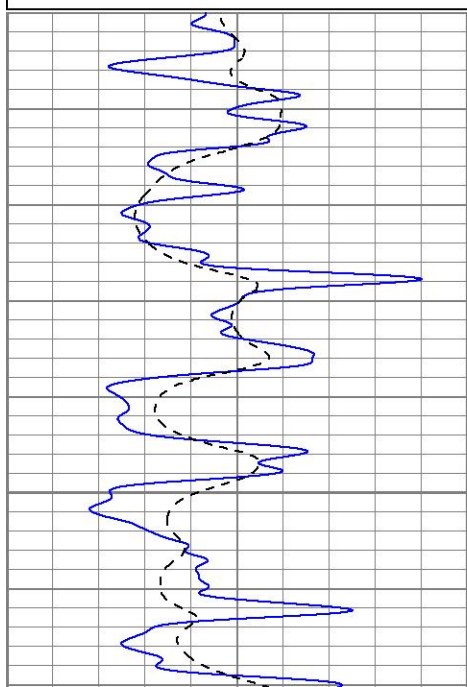


MAIN PASS

Database File ppsharpdressedman#1oh.db
 Dataset Pathname pass3.1
 Presentation Format kdil
 Dataset Creation Sat Jun 04 18:18:57 2022
 Charted by Depth in Feet scaled 1:240

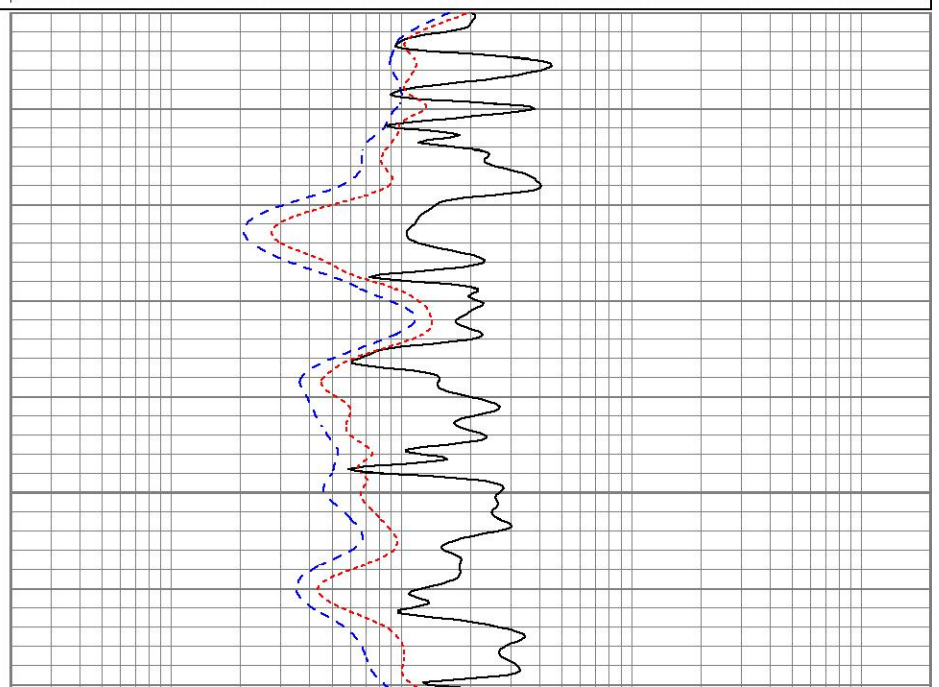
0	GR (GAPI)	150
-100	SP (mV)	100

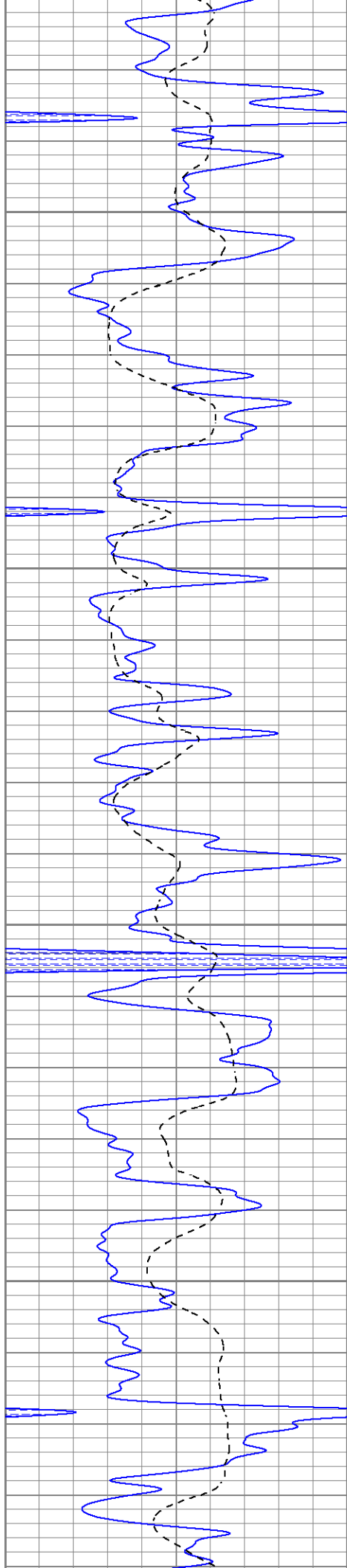
0.2	RILD (Ohm-m)	2000
0.2	RLL3 (Ohm-m)	2000
0.2	RILM (Ohm-m)	2000



3500

3650



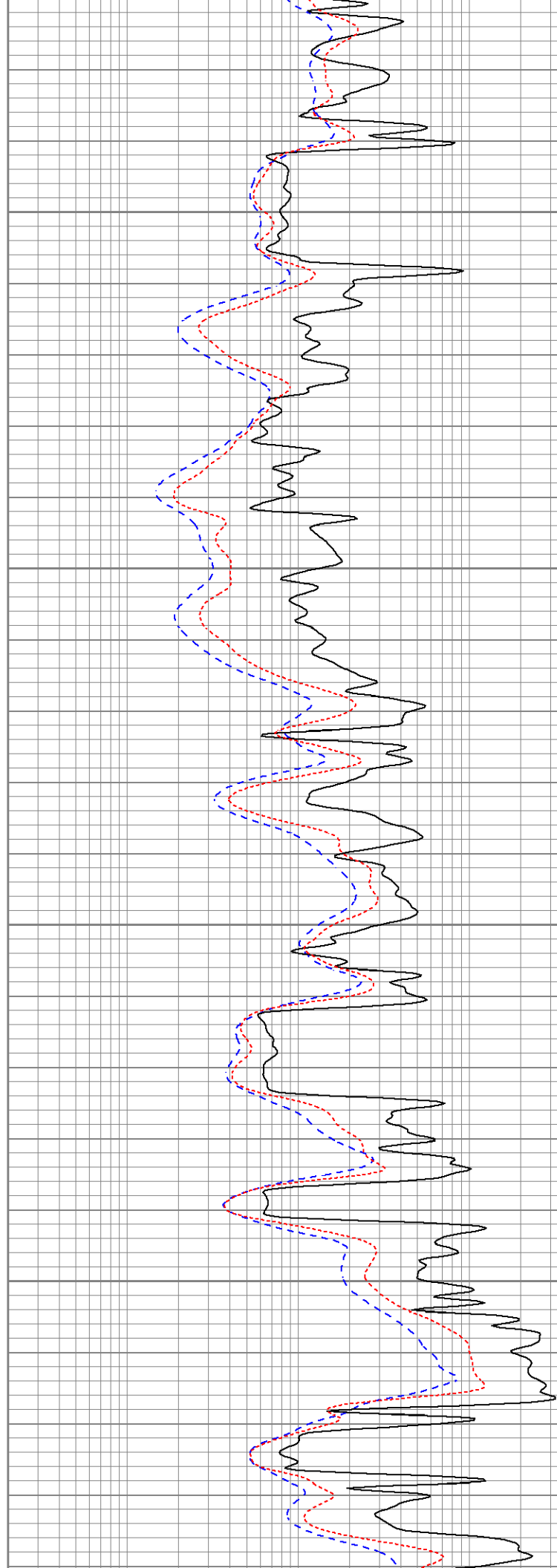


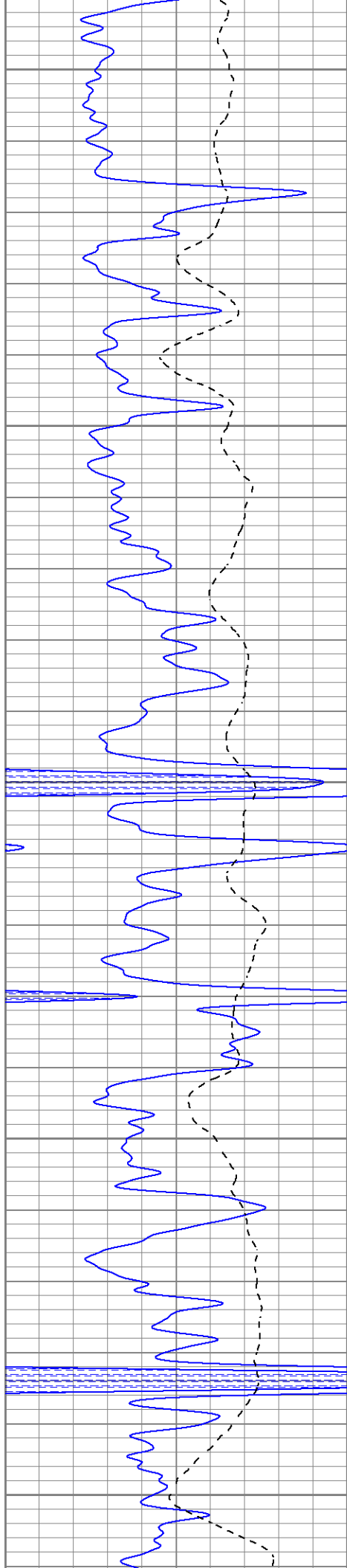
3700

3750

3800

3850





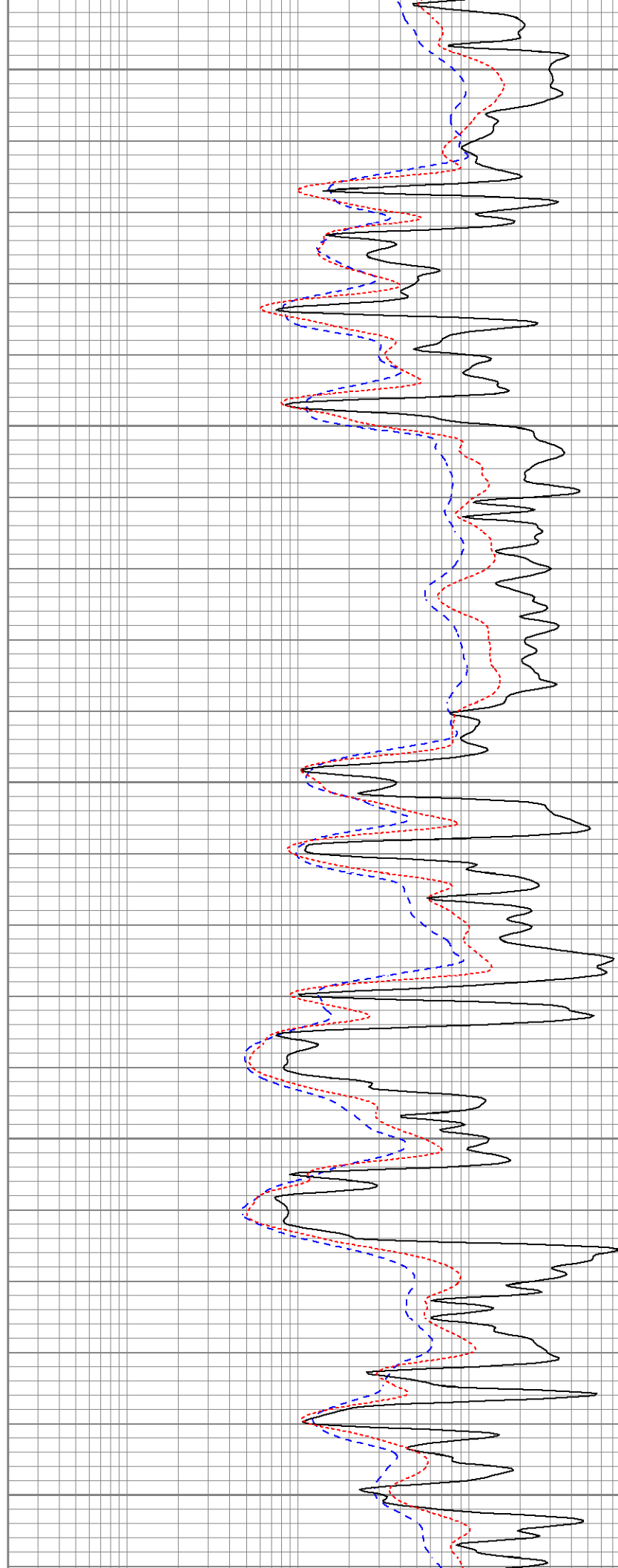
3900

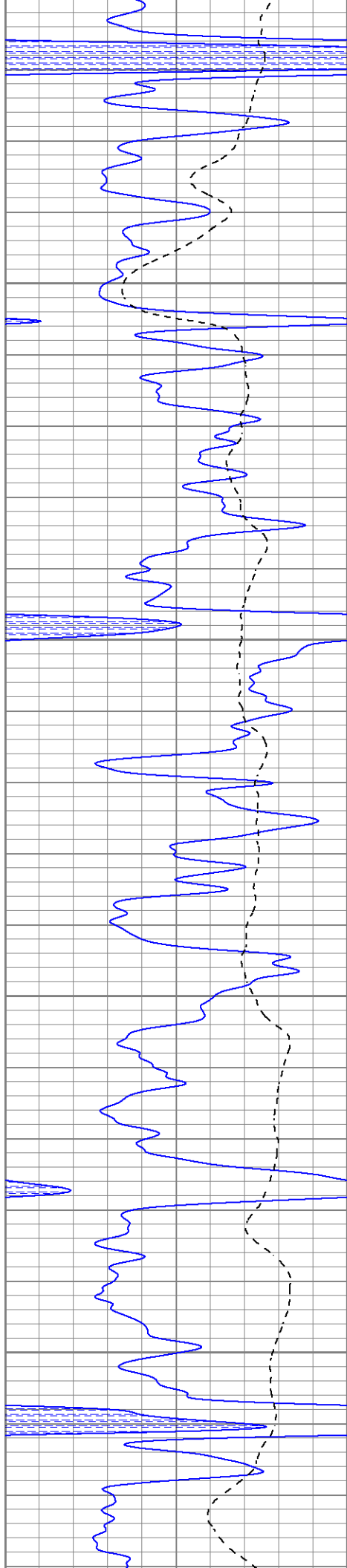
3950

4000

4050

4100



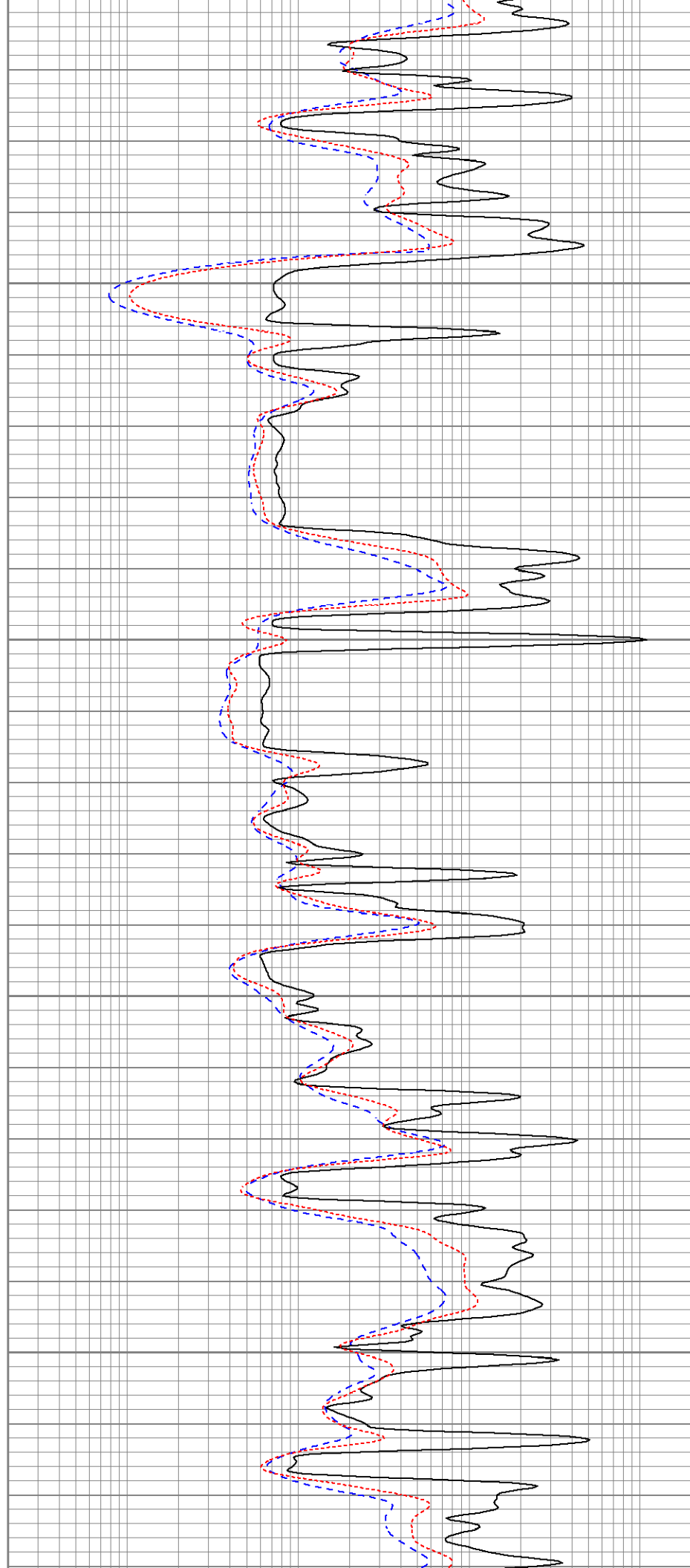


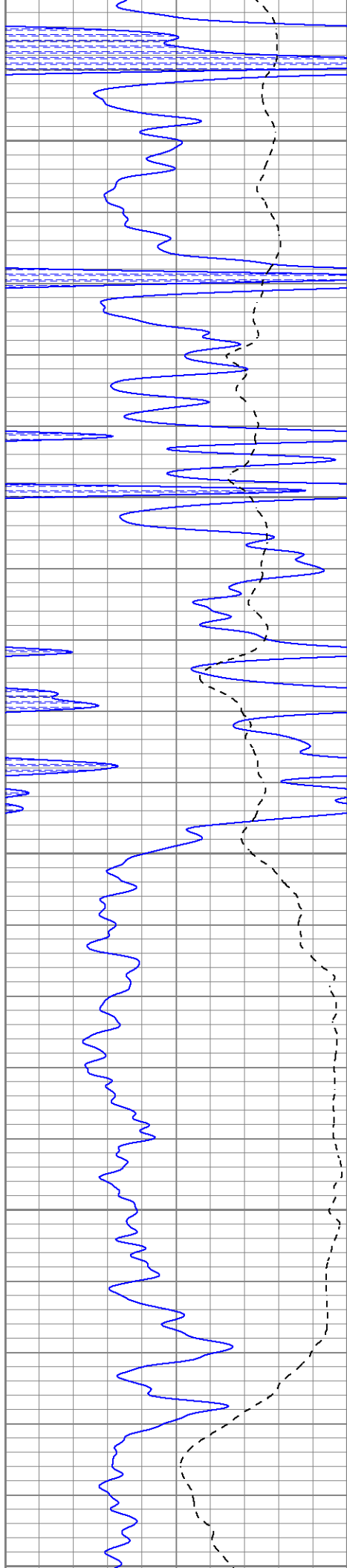
4150

4200

4250

4300





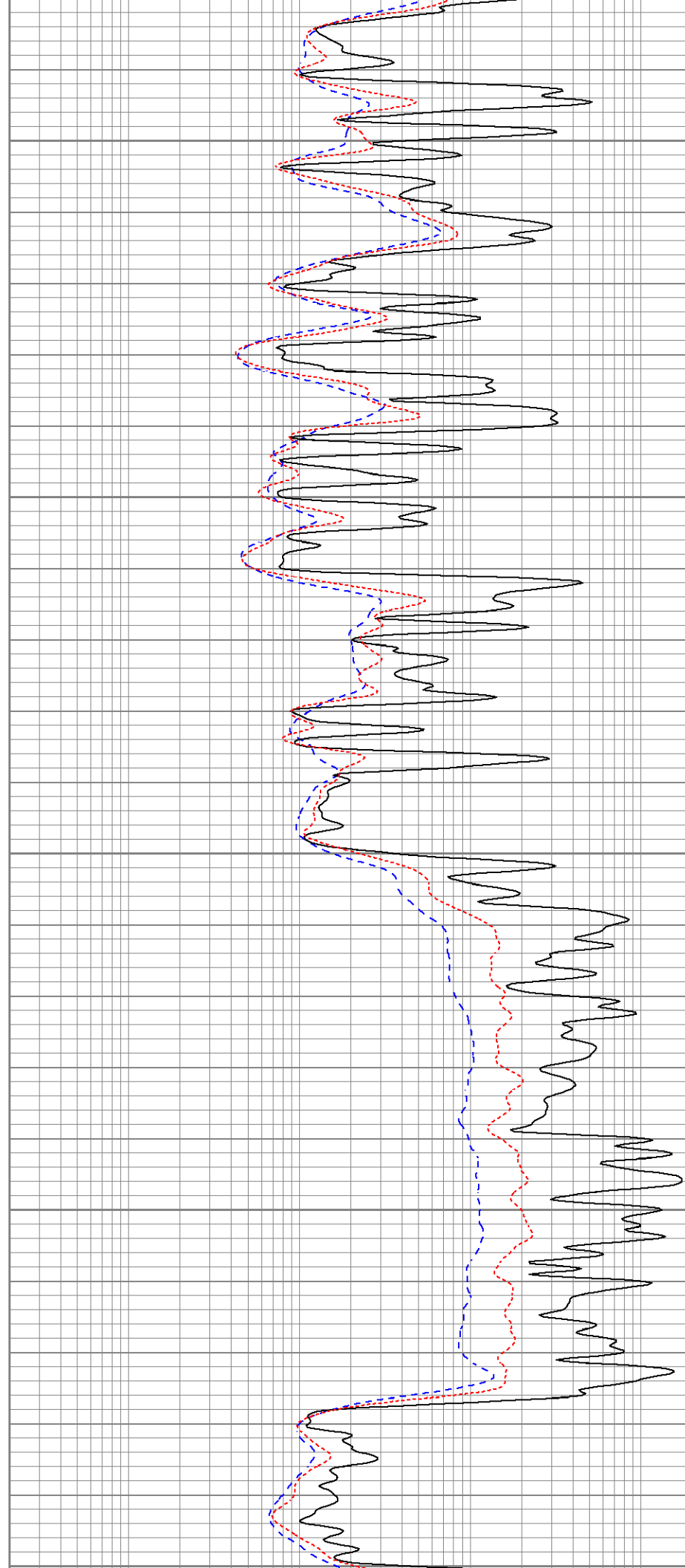
4350

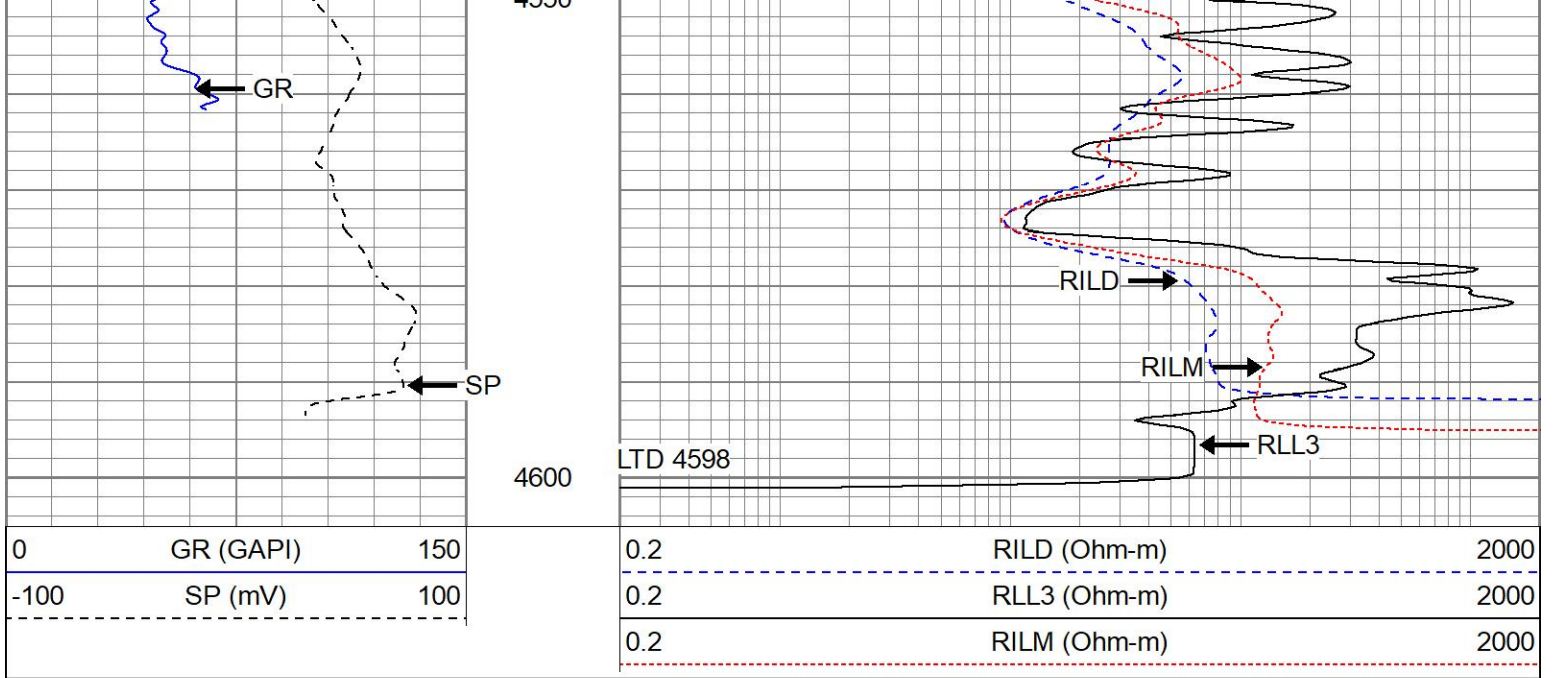
4400

4450

4500

4550



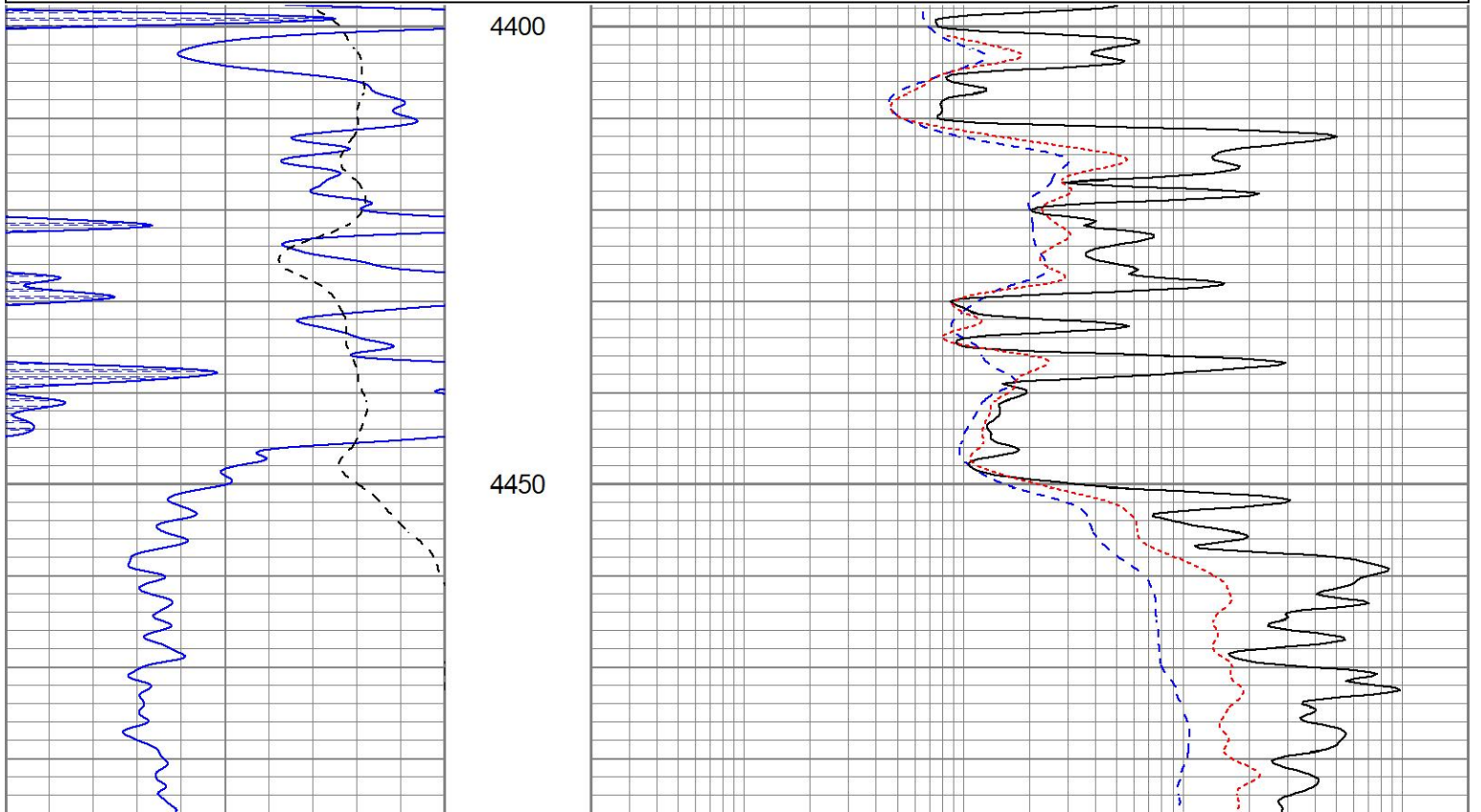


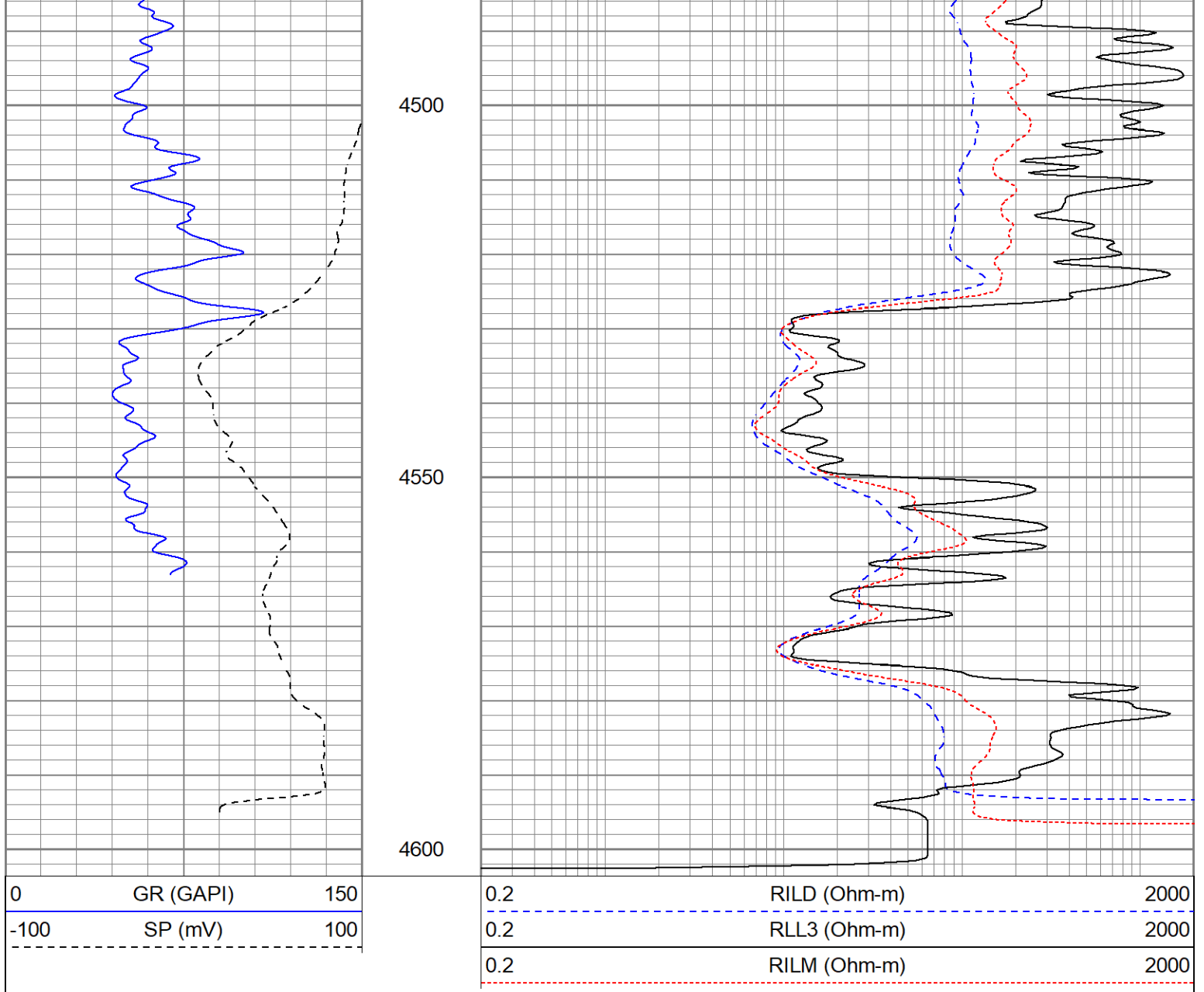
REPEAT SECTION

Database File ppssharpdressedman#1oh.db
 Dataset Pathname pass2.1
 Presentation Format kdil
 Dataset Creation Sat Jun 04 18:22:16 2022
 Charted by Depth in Feet scaled 1:240

0	GR (GAPI)	150
-100	SP (mV)	100

0.2	RILD (Ohm-m)	2000
0.2	RLL3 (Ohm-m)	2000
0.2	RILM (Ohm-m)	2000





Calibration Report

Database File ppsharpdressedman#1oh.db
 Dataset Pathname pass2.1
 Dataset Creation Sat Jun 04 18:22:16 2022

Dual Induction Calibration Report

Serial-Model: 1842-ADM
 Surface Cal Performed: Mon Sep 20 22:00:42 2021
 Downhole Cal Performed: Mon Sep 20 22:00:24 2021
 After Survey Verification Performed: Mon Sep 20 22:05:52 2021

Surface Calibration

Loop:	Readings			References			Results	
	Air	Loop	V	Air	Loop	mmho/m	m	b
Deep	0.018	0.672	V	0.000	350.000	mmho/m	535.475	-9.896
Medium	0.003	0.769	V	0.000	400.000	mmho/m	522.607	-1.745
Internal:	Zero	Cal		Zero	Cal		m	b
Deep	0.018	0.672	V	0.000	350.000	mmho/m	535.240	-9.549
Medium	0.003	0.768	V	0.000	550.000	mmho/m	718.637	-2.088

Downhole Calibration								
Internal:	Readings			References			Results	
	Zero	Cal		Zero	Cal		m	b
Deep	-0.219	349.905	mmho/m	-0.343	349.810	mmho/m	1.000	-3.124
Medium	-0.118	399.722	mmho/m	-0.226	399.745	mmho/m	1.000	-3.108
Shallow	2.536	0.025	V	500.000	2.000	Ohm-m	170.330	-1.504

After Survey Verification								
Internal:	Readings			Targets			Results	
	Zero	Cal		Zero	Cal		m'	b'
Deep	0.000	0.000	mmho/m	-0.219	349.905	mmho/m	1.000	-3.124
Medium	0.000	0.000	mmho/m	-0.118	399.722	mmho/m	1.000	-3.108
Shallow	0.000	0.000	Ohm-m	500.000	2.000	Ohm-m	1.000	0.000

Admyr Lithodensity Calibration Report

Serial-Model:	1C-C
Source:	Blue2
Master Calibration Performed:	Tue Oct 20 08:37:42 2020

Master Calibration						
	Density		Far Detector	Near Detector		
Magnesium	1.670	g/cc	6640.15	4353.97	cps	
Aluminium	2.640	g/cc	1651.98	2729.31	cps	
Aluminium+Sleeve	2.640	g/cc	1651.98	2729.31	cps	
Spine Angle = 71.44			Density/Spine Ratio = 0.661			
	PE		NLITH	NHARD		
Magnesium	1.900	barn	1410.00	1000.00	cps	
Aluminium	2.400	barn	1101.00	918.50	cps	
Aluminium+Sleeve	5.000	barn	656.00	951.00	cps	
M = 0.448			B = -0.112	R = 0.999		
	Size		Reading			
Small Ring	8.00	in	8.61	V		
Large Ring	14.30	in	12.40	V		

Neutron Calibration Report

Serial Number:	AD5139
Tool Model:	ADMY5139
Performed:	(Not Performed)
Calibrator Value:	1 NAPI
Calibrator Reading:	1 cps
Sensitivity:	1 NAPI/cps

Temperature Calibration Report

Serial Number:	WithMC
Tool Model:	WMC
Performed:	Fri Apr 19 12:15:04 2019

	Reference	Reading
Low Reference:	0.00 degF	0.00 degF
High Reference:	1.00 degF	1.00 degF
Gain:	1.00	
Offset:	0.00	
Delta Spacing	1	

Inclinometer Calibration Report

Performed:	Wed May 5 19:20:48 2021				
	Low Read.	High Read.	Low Ref.	High Ref.	
X Accelerometer	205.00	1843.00	-1.00	1.00	gee
Y Accelerometer	205.00	1843.00	-1.00	1.00	gee
Z Accelerometer					gee

Gamma Ray Calibration Report

Serial Number:	WithMC	
Tool Model:	WMC	
Performed:	Wed May 5 19:21:08 2021	
Calibrator Value:	1.0	GAPI
Background Reading:	0.0	cps
Calibrator Reading:	1.0	cps
Sensitivity:	1.0000	GAPI/cps