



MICRO
LOG

Company PALOMINO PETROLEUM
Well SHARP DRESSED MAN #1
Field N/A
County GOVE
State KS

Company PALOMINO PETROLEUM
Well SHARP DRESSED MAN #1
Field N/A
County GOVE State KS

Location: API #: 15 063 22411
713' FSL & 628' FEL
SEC 16 TWP 14S RGE 30W
Permanent Datum Ground Level Elevation 2742
Log Measured From KB 11' AGL
Drilling Measured From KB
Other Services
CDNL
DIL
Elevation
K.B. 2753
D.F. 2751
G.L. 2742

Date	6/04/22
Run Number	TWO
Depth Driller	4600
Depth Logger	4598
Bottom Logged Interval	4596
Top Log Interval	3600
Casing Driller	8 5/8" @ 226
Casing Logger	226
Bit Size	7 7/8"
Type Fluid in Hole	Chemical
Density / Viscosity	9.2/52
pH / Fluid Loss	10.5/8.0
Source of Sample	Pit
Rm @ Meas. Temp	.9@70degf
Rmf @ Meas. Temp	.68@70degf
Rmc @ Meas. Temp	1.08@70degf
Source of Rmf / Rmc	Calculated
Rm @ BHT	.49@127degf
Time Circulation Stopped	3:00 P.M.
Time Logger on Bottom	5:00 PM
Maximum Recorded Temperature	129degf
Equipment Number	T605
Location	Hays, KS
Recorded By	GUS PFANENSTIEL
Witnessed By	RYAN SEIB

<<< Fold Here >>>

All interpretations are opinions based on inferences from electrical or other measurements and we cannot and do not guarantee the accuracy or correctness of any interpretation, and we shall not, except in the case of gross or willful negligence on our part, be liable or responsible for any loss, costs, damages, or expenses incurred or sustained by anyone resulting from any interpretation made by any of our officers, agents or employees. These interpretations are also subject to our general terms and conditions set out in our current Price Schedule.

Comments

SOUTH OF GOVE TO I RD. WEST TO 28 RD
NORTH 2 MILES, WEST INTO.

Thank You for using Gemini Wireline LLC
785-625-1182

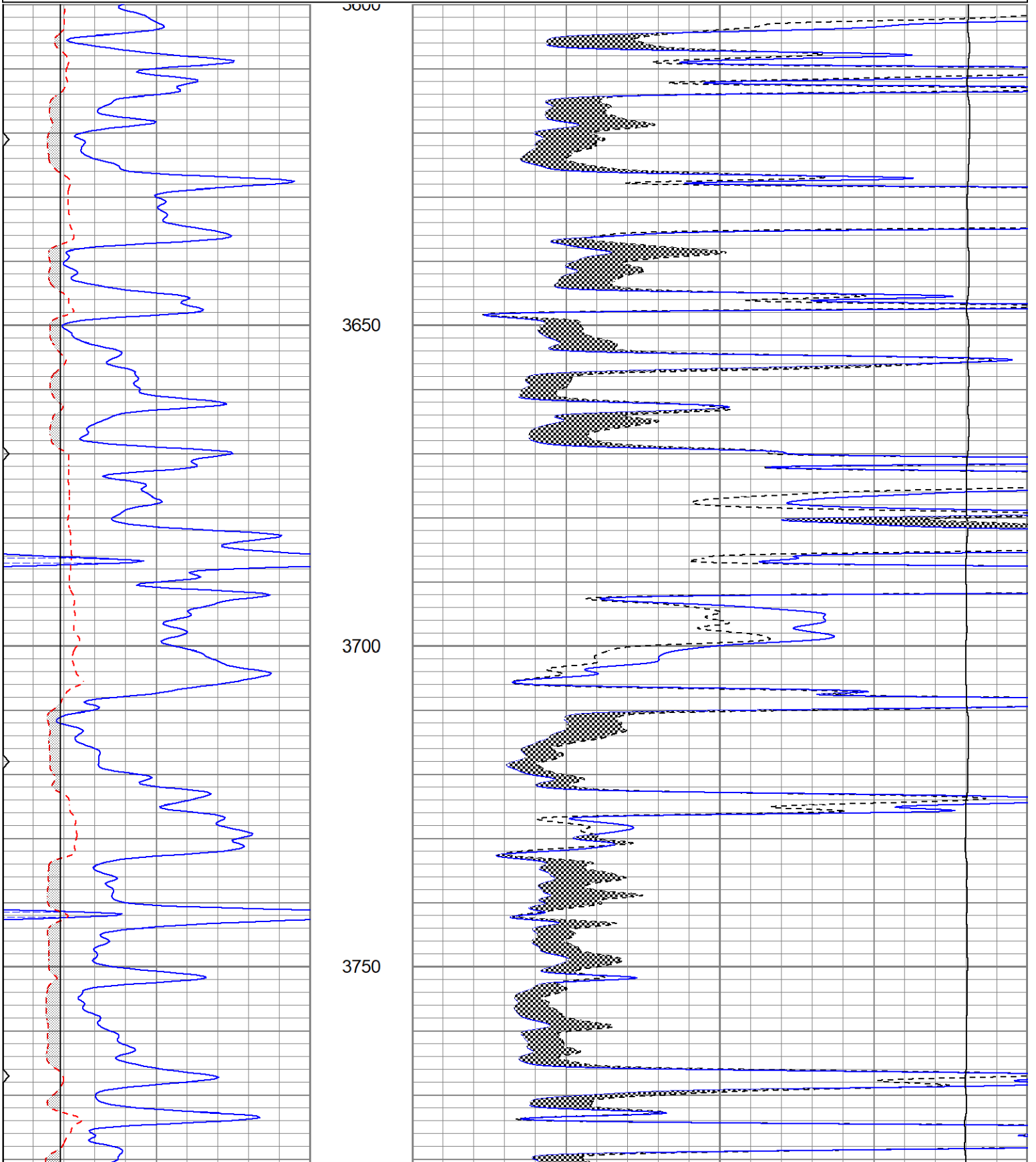


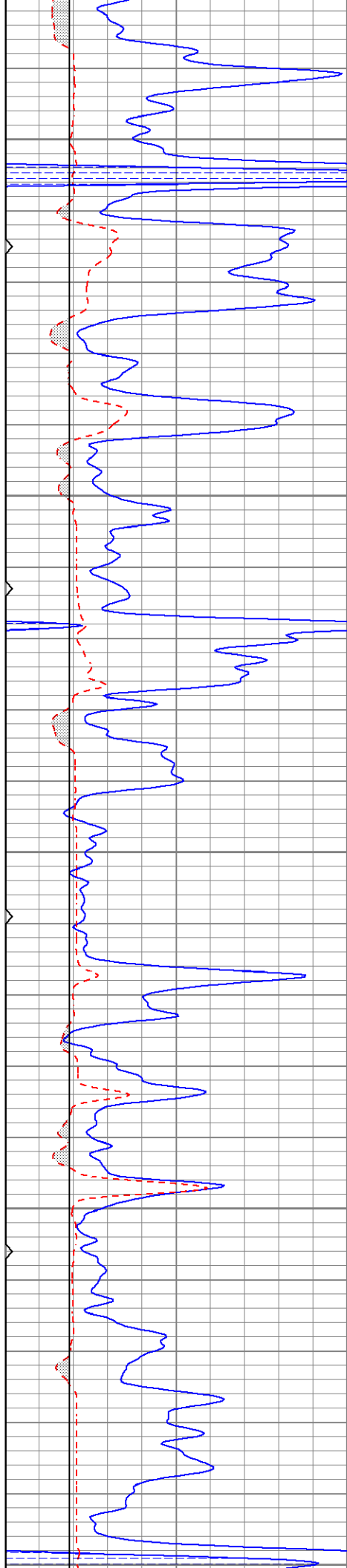
MAIN PASS

Database File ppsharpdressedman#1oh.db
 Dataset Pathname pass5.1
 Presentation Format kml
 Dataset Creation Sat Jun 04 19:02:40 2022
 Charted by Depth in Feet scaled 1:240

0	GR (GAPI)	150
6	MCAL (in)	16
6	BOREID (in)	16
0	MINMK	50

0	MN 2" (Ohm-m)	20
0	MI 1" (Ohm-m)	20
10000	LTEN (lb)	0





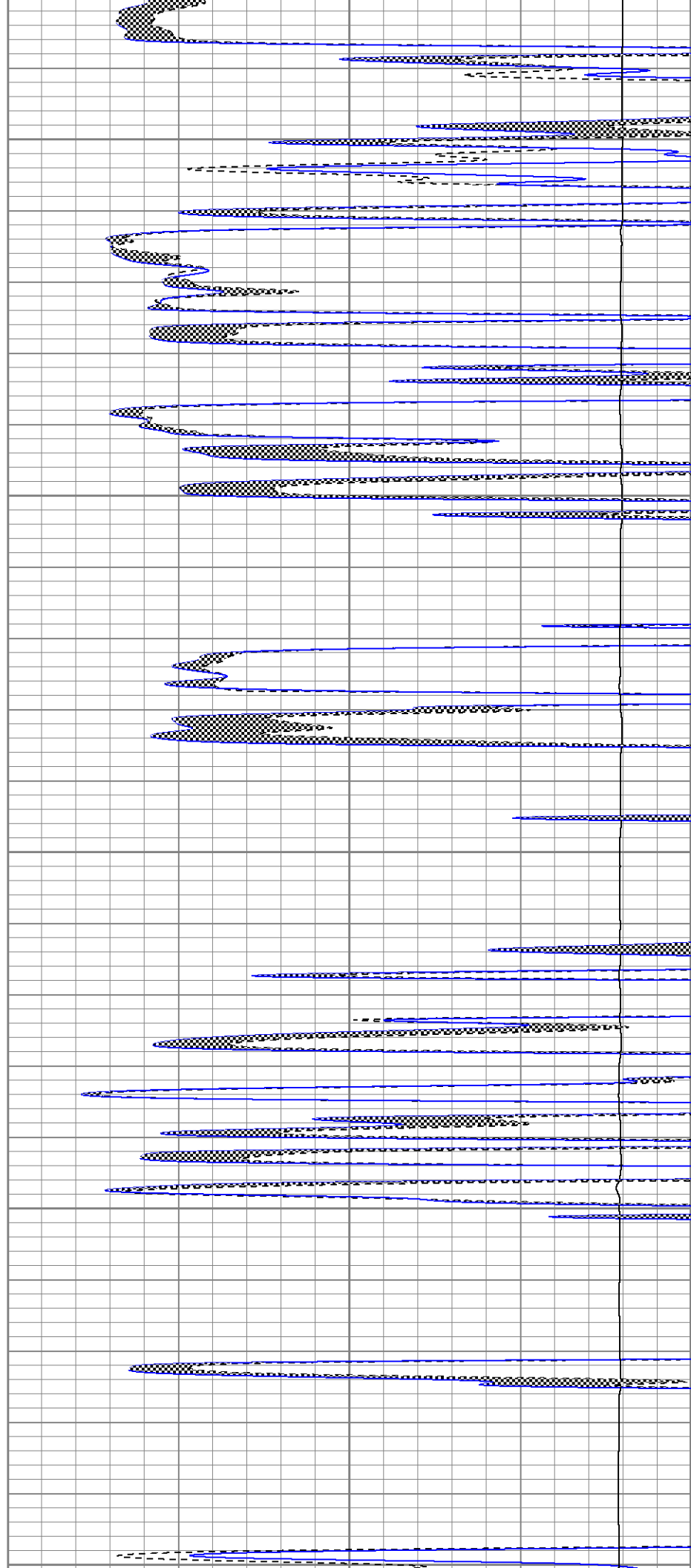
3800

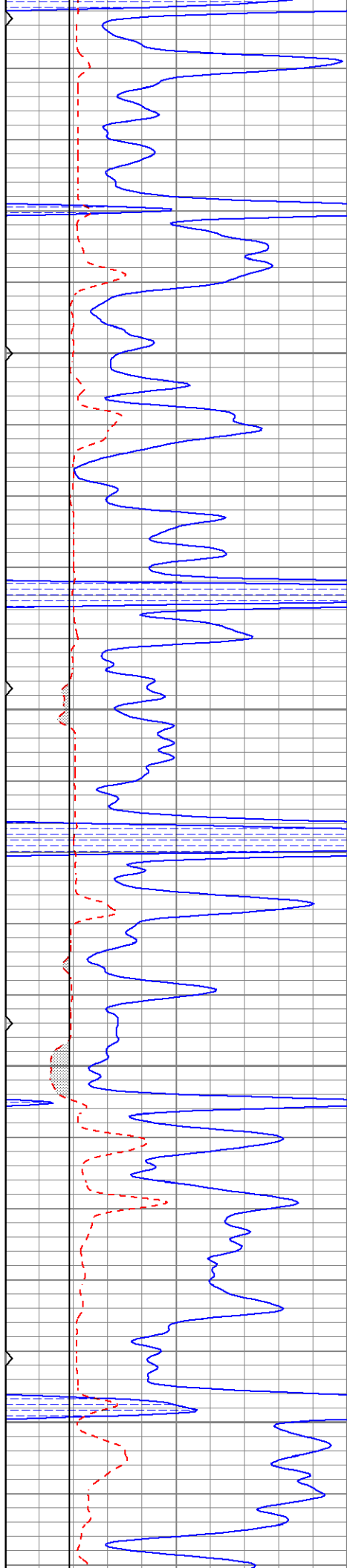
3850

3900

3950

4000



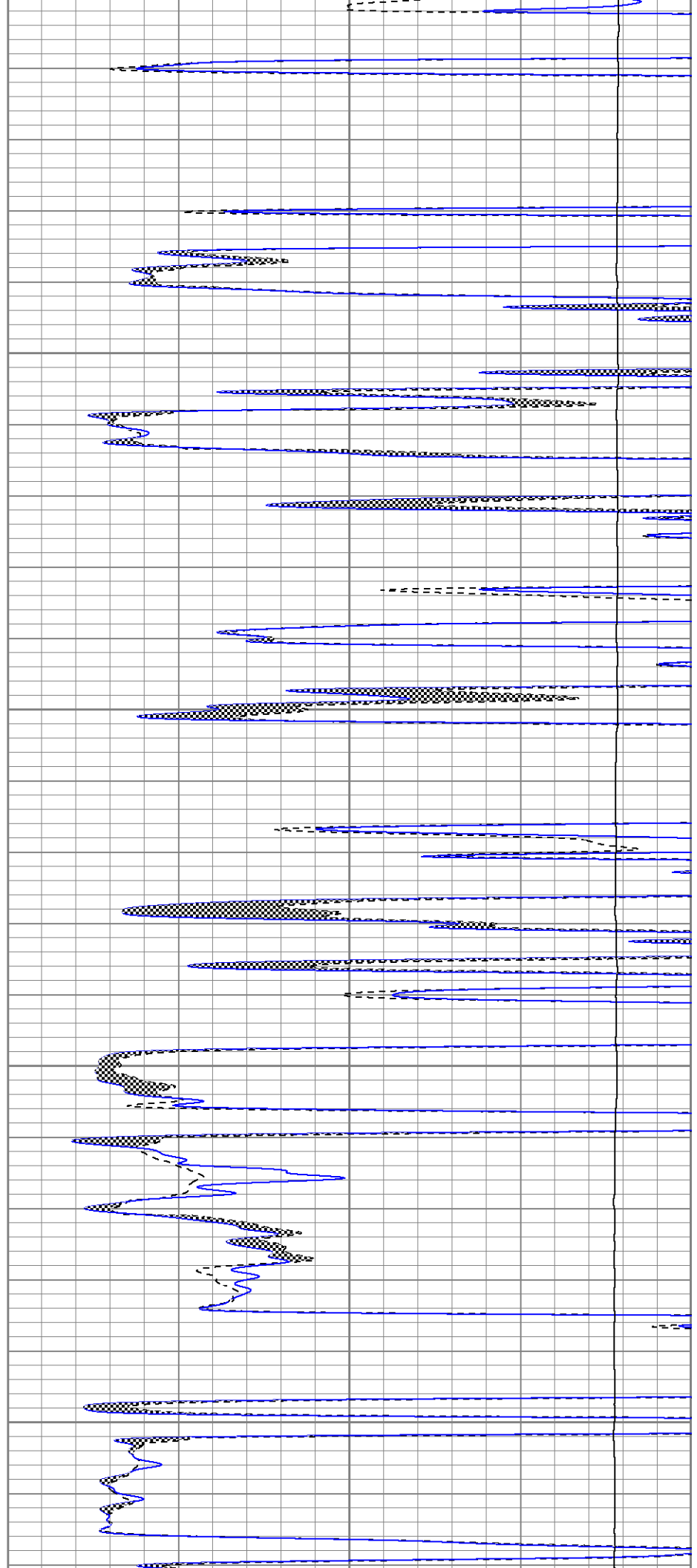


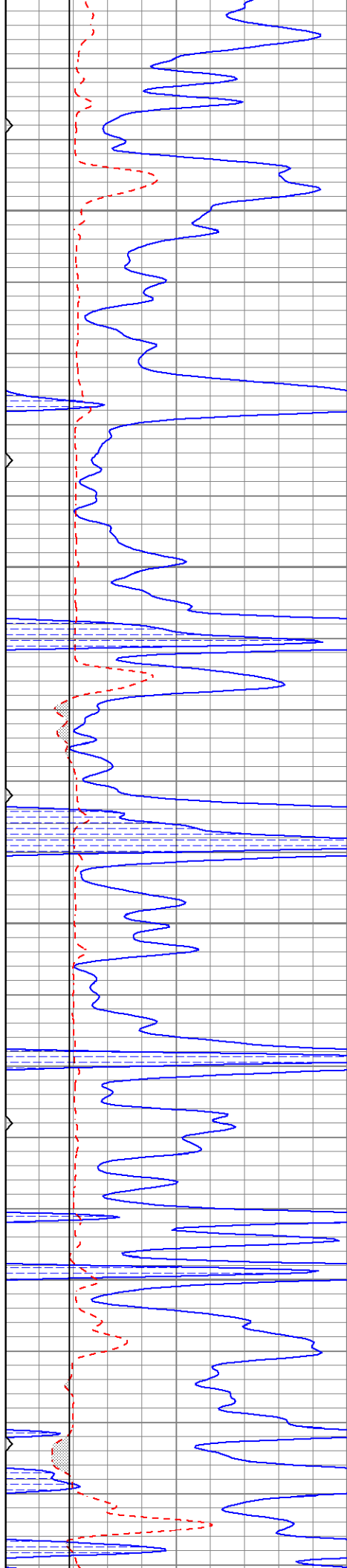
4050

4100

4150

4200



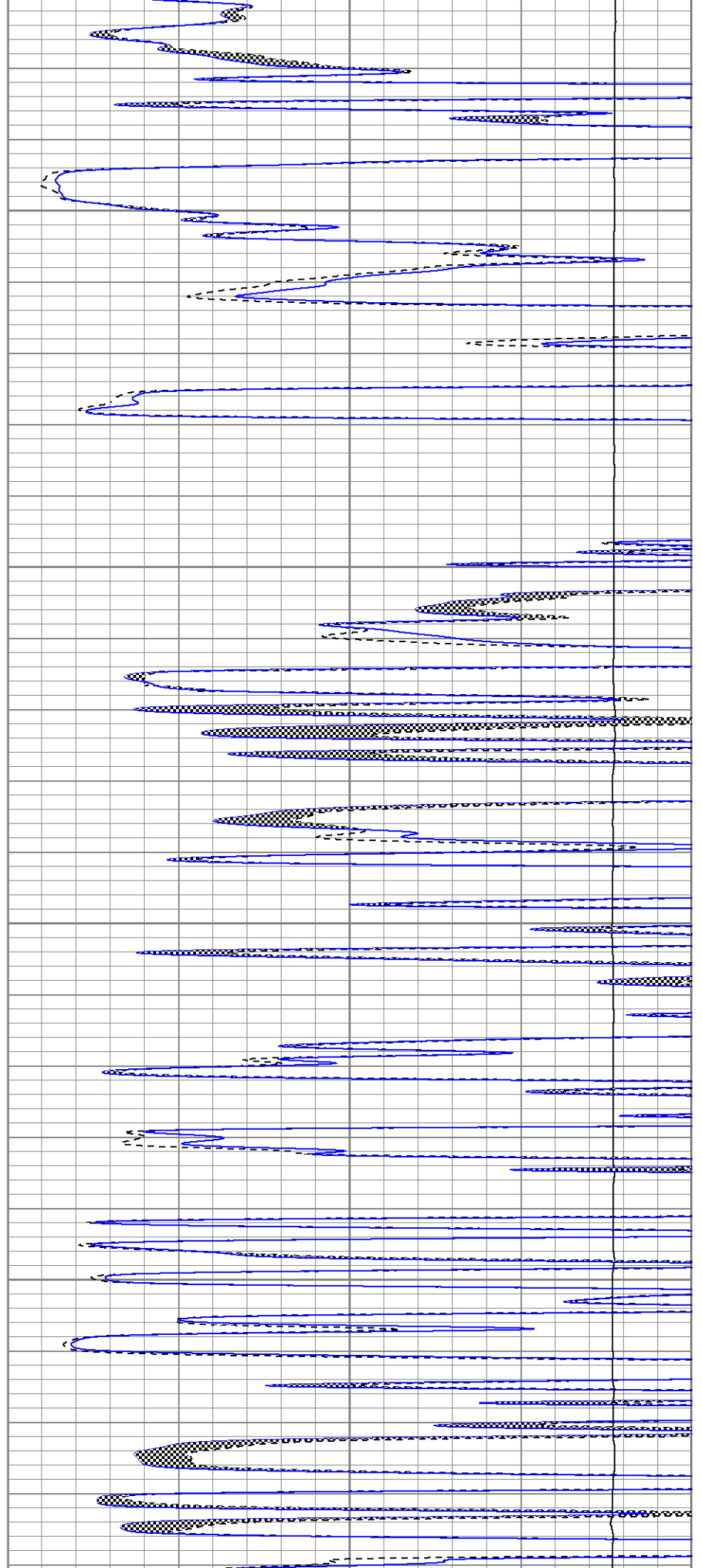


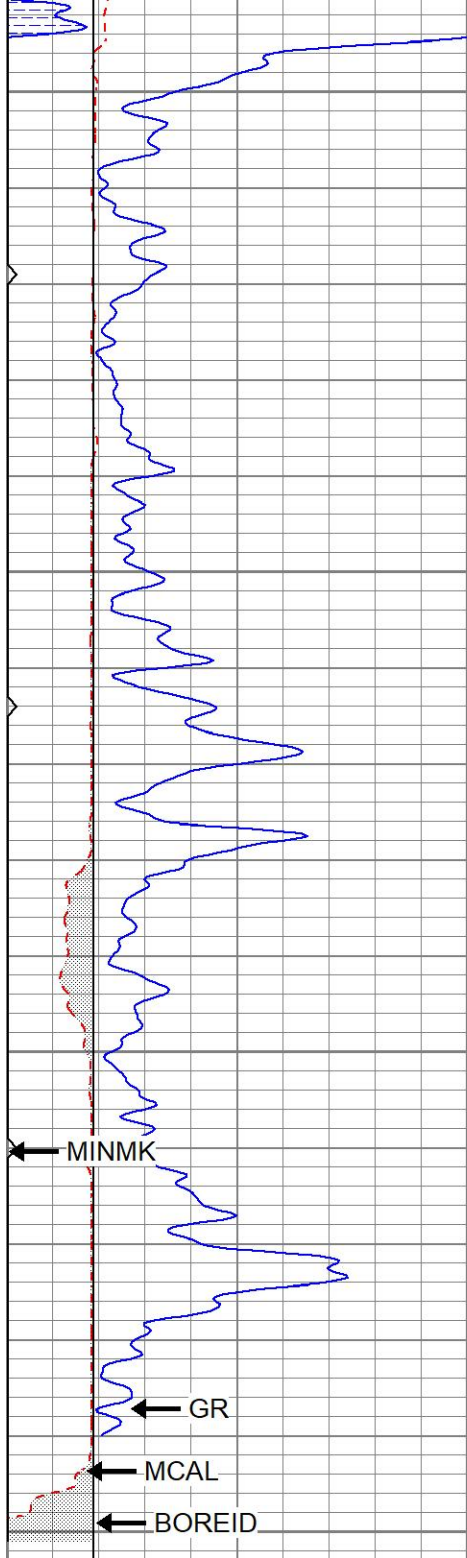
4250

4300

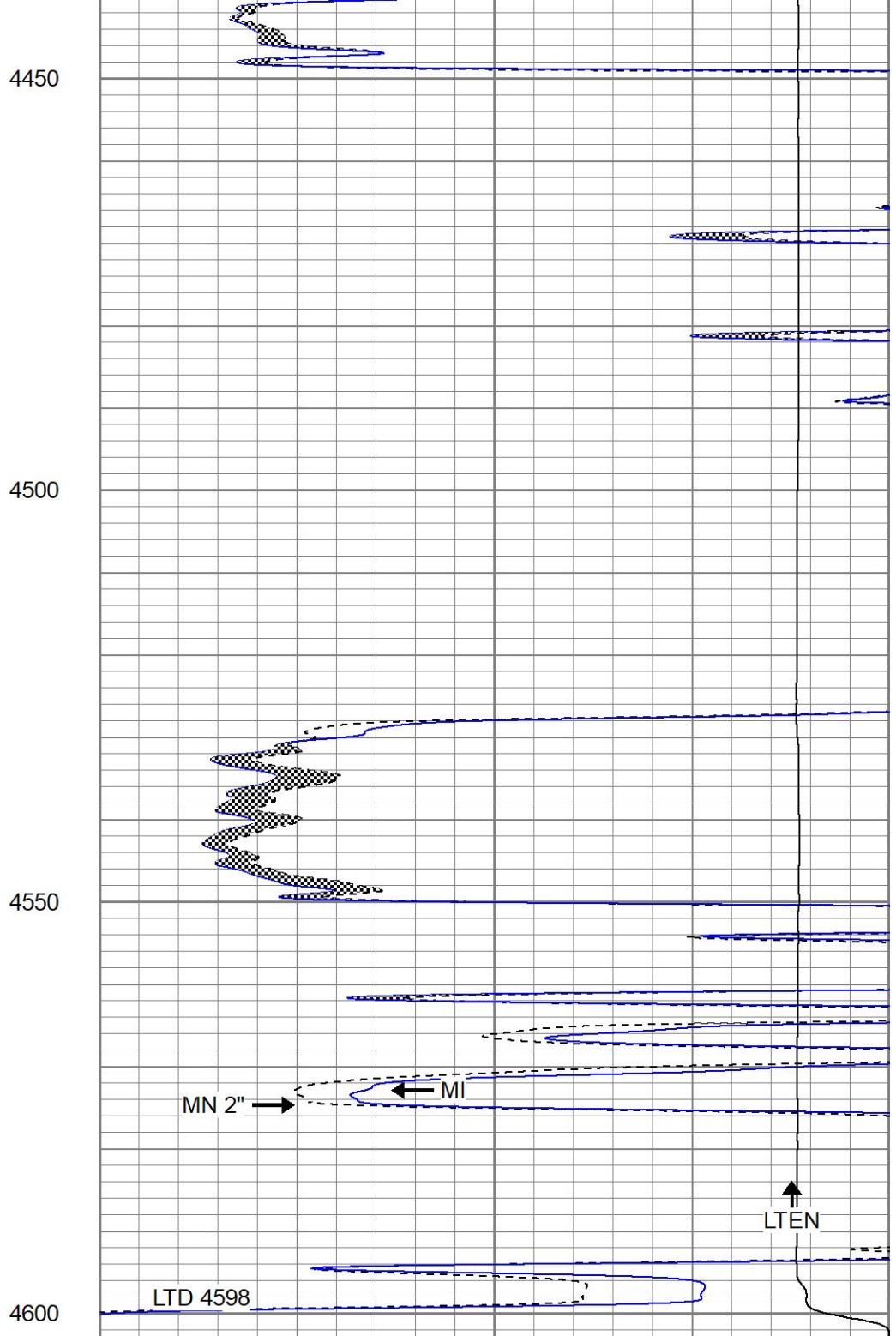
4350

4400





0	GR (GAPI)	150
6	MCAL (in)	16
6	BOREID (in)	16
0	MINMK	50



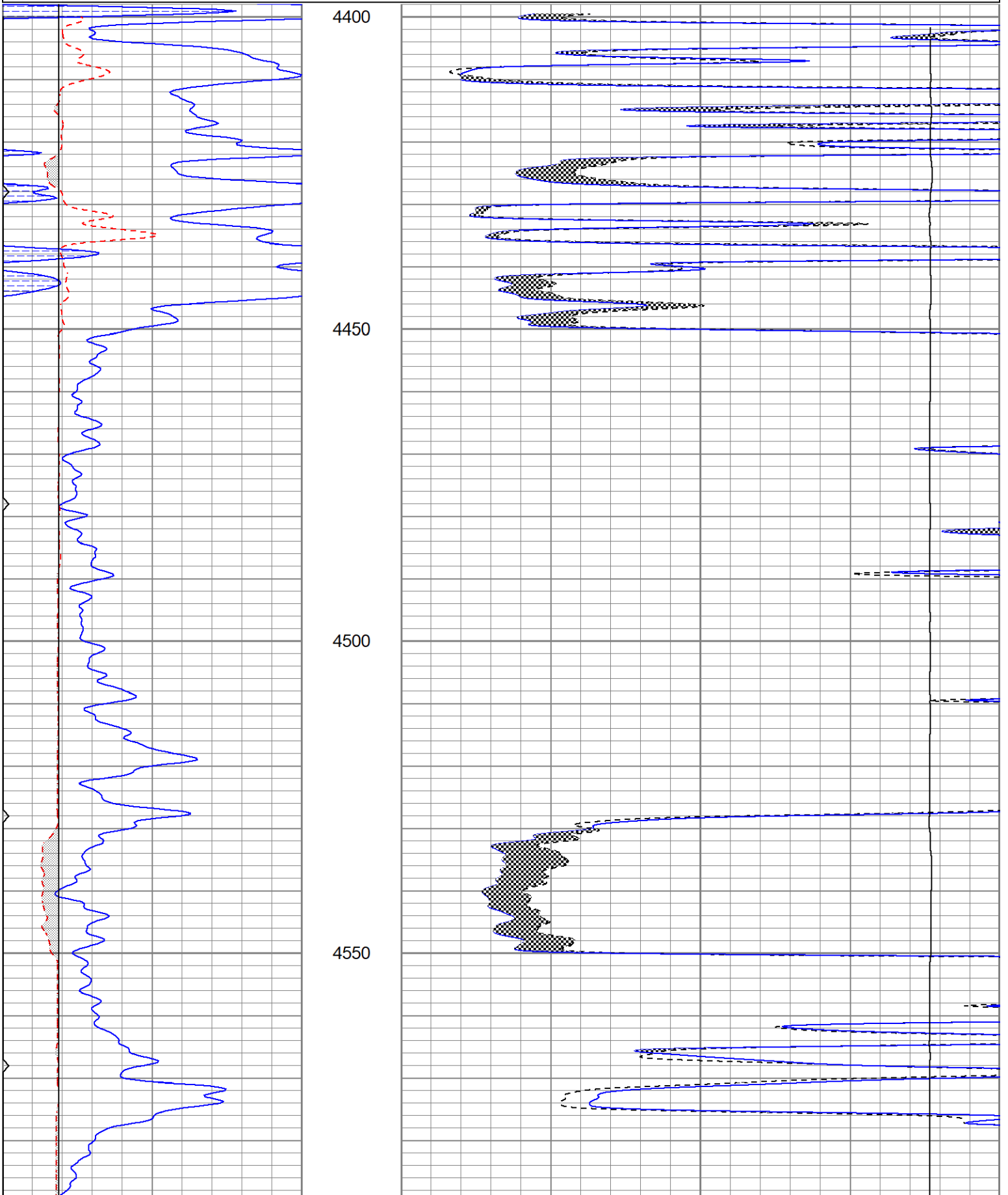
0	MN 2" (Ohm-m)	20
0	MI 1" (Ohm-m)	20
10000	LTEN (lb)	0

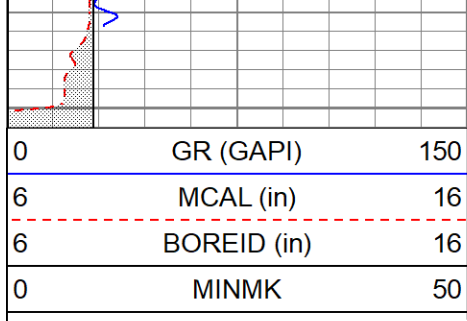


REPEAT SECTION

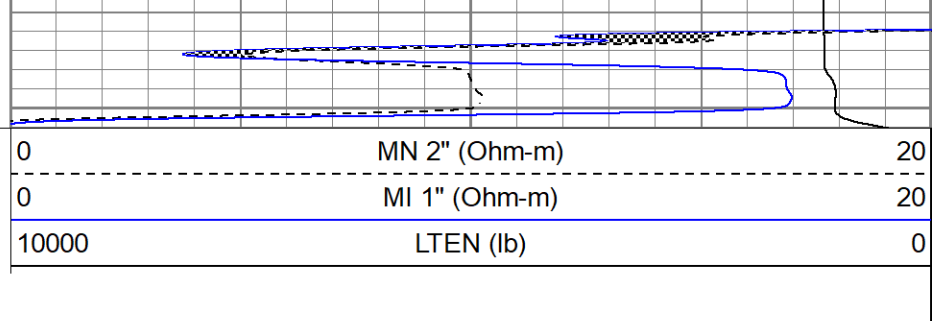
0	GR (GAPI)	150
6	MCAL (in)	16
6	BOREID (in)	16
0	MINMK	50

0	MN 2" (Ohm-m)	20
0	MI 1" (Ohm-m)	20
10000	LTEN (lb)	0





4600



0	GR (GAPI)	150
6	MCAL (in)	16
6	BOREID (in)	16
0	MINMK	50

0	MN 2" (Ohm-m)	20
0	MI 1" (Ohm-m)	20
10000	LTEN (lb)	0

Calibration Report

Database File ppssharpdressedman#1oh.db
 Dataset Pathname pass4.1
 Dataset Creation Sat Jun 04 18:50:27 2022

Microlog Calibration Report

Serial-Model: 012-Pengo
 Performed: Sat Jun 4 18:25:33 2022

	Readings			References			Results	
	Zero	Cal		Zero	Cal		m	b
Normal	0.0056	0.1002	V	0.0000	10.0000	Ohm-m	105.7780	-0.9940
Inverse	0.0030	0.1296	V	0.0000	10.0000	Ohm-m	78.9590	-0.2347
Caliper	2.7578	4.6384	V	7.9000	14.0000	in	3.2437	-0.8953

Gamma Ray Calibration Report

Serial Number: 2001
 Tool Model: OH
 Performed: Sat Sep 4 22:48:39 2021

Calibrator Value: 1.0 GAPI

Background Reading: 0.0 cps
 Calibrator Reading: 1.0 cps

Sensitivity: 0.8000 GAPI/cps