



TRIPLE COMBO LOG

Company RITCHIE EXPLORATION, INC.

Well #1 MOLITOR 23 AD

Field WILLOWDALE SOUTHEAST

County KINGMAN State KANSAS

Location: API #: 15-095-22359-0000

1240' FSL & 1132' FEL

SEC 23 TWP 29S RGE 9W

Permanent Datum GROUND LEVEL Elevation 1672

Log Measured From KELLY BUSHING 13' A.G.L

Drilling Measured From KELLY BUSHING

Other Services
CDL/CNL
DIL/MEL

Elevation

K.B. 1685
D.F. 1683
G.L. 1672

Date	6/3/24
Run Number	ONE
Depth Driller	4760
Depth Logger	4762
Bottom Logged Interval	4760
Top Log Interval	3200
Casing Driller	8.625@225
Casing Logger	225
Bit Size	7.785
Type Fluid in Hole	CHEMICAL MUD
Density / Viscosity	9.0/53
pH / Fluid Loss	12.0/7.2
Source of Sample	FLOWLINE
Rm @ Meas. Temp	.600@70F
Rmf @ Meas. Temp	.450@70F
Rmc @ Meas. Temp	.720@70F
Source of Rmf / Rmc	MEASUREMENT
Rm @ BHT	.341@123F
Time Circulation Stopped	2 HOURS
Time Logger on Bottom	7:15 A.M.
Maximum Recorded Temperature	123F
Equipment Number	922339
Location	HAYS, KANSAS
Recorded By	JEFF LUEBBERS
Witnessed By	MAX LOVELY

<<< Fold Here >>>

All interpretations are opinions based on inferences from electrical or other measurements and we cannot and do not guarantee the accuracy or correctness of any interpretation, and we shall not, except in the case of gross or willful negligence on our part, be liable or responsible for any loss, costs, damages, or expenses incurred or sustained by anyone resulting from any interpretation made by any of our officers, agents or employees. These interpretations are also subject to our general terms and conditions set out in our current Price Schedule.

15-095-22359-0000

Comments

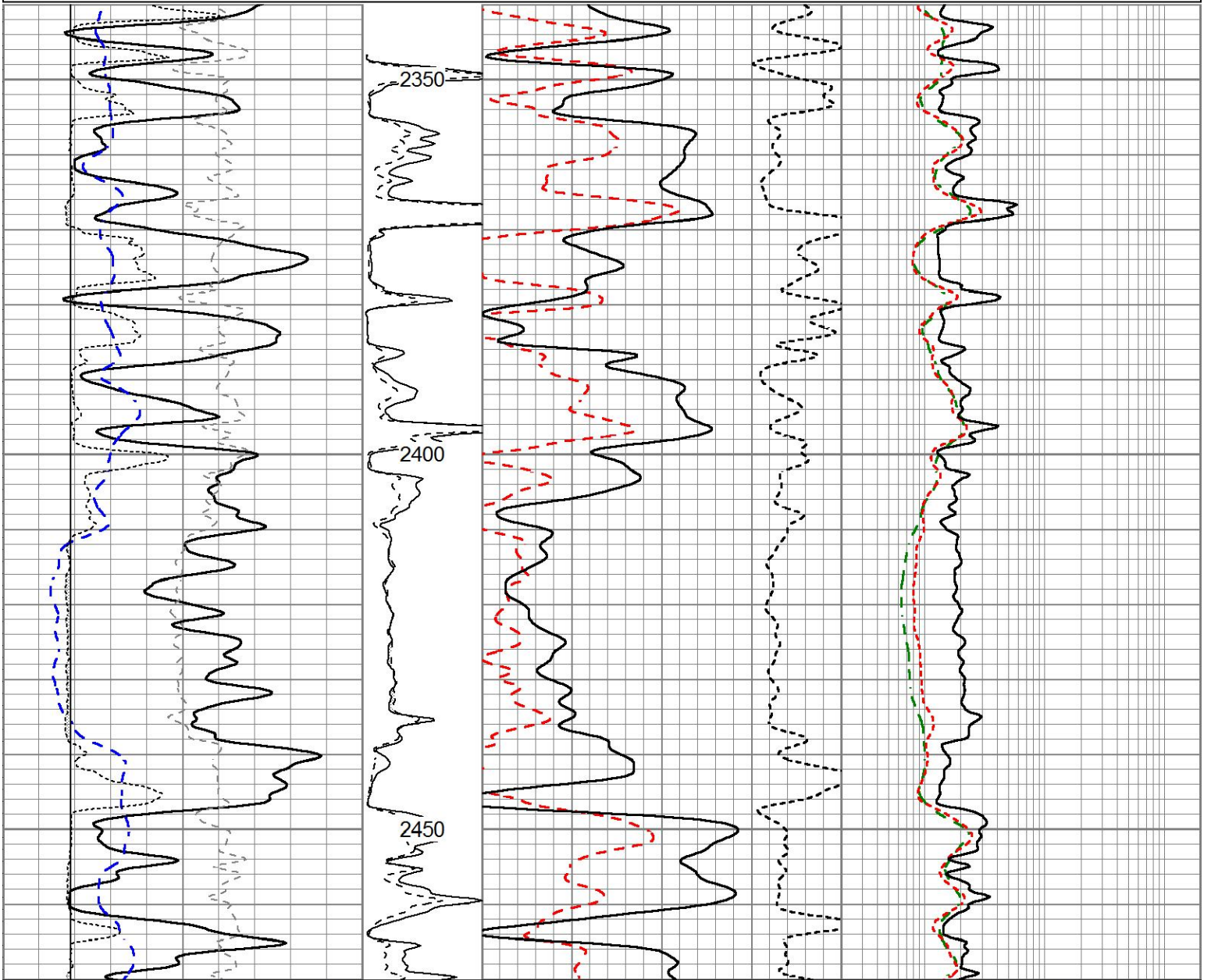
THANK YOU FOR USING ELI WIRELINE HAYS. KANSAS (785) 628-6395
DIRECTIONS
ZENDA, KS., 4N. TO "SW 100 ST.", 3/4E., N. INTO



INDIAN CAVE

Database File 8630ddn.db
 Dataset Pathname pass3.1l
 Presentation Format _ritchie
 Dataset Creation Mon Jun 03 11:09:13 2024
 Charted by Depth in Feet scaled 1:240

0	Gamma Ray (GAPI)	150	MEL15	30	CN Porosity (pu)	-10	0.2	Deep Resistivity (Ohm-m)	2000
-100	SP (mV)	100	(Ohm-m)	30	Density Porosity (pu)	-10	Medium Resistivity		
-200	RxoRt	100	0	40	CORRECTION		0.2	(Ohm-m)	2000
6	DCAL (in)	16	MEL20		-0.25 (g/cc)	0.25	Shallow Resistivity		
			(Ohm-m)				0.2	(Ohm-m)	2000
			0	40					



0	Gamma Ray (GAPI)	150	MEL15	30	CN Porosity (pu)	-10	0.2	Deep Resistivity (Ohm-m)	2000
-100	SP (mV)	100	(Ohm-m)	30	Density Porosity (pu)	-10	Medium Resistivity		
-200	RxoRt	100	0	40	CORRECTION		0.2	(Ohm-m)	2000
6	DCAL (in)	16	MEL20		-0.25 (g/cc)	0.25	Shallow Resistivity		
			(Ohm-m)				0.2	(Ohm-m)	2000
			0	40					

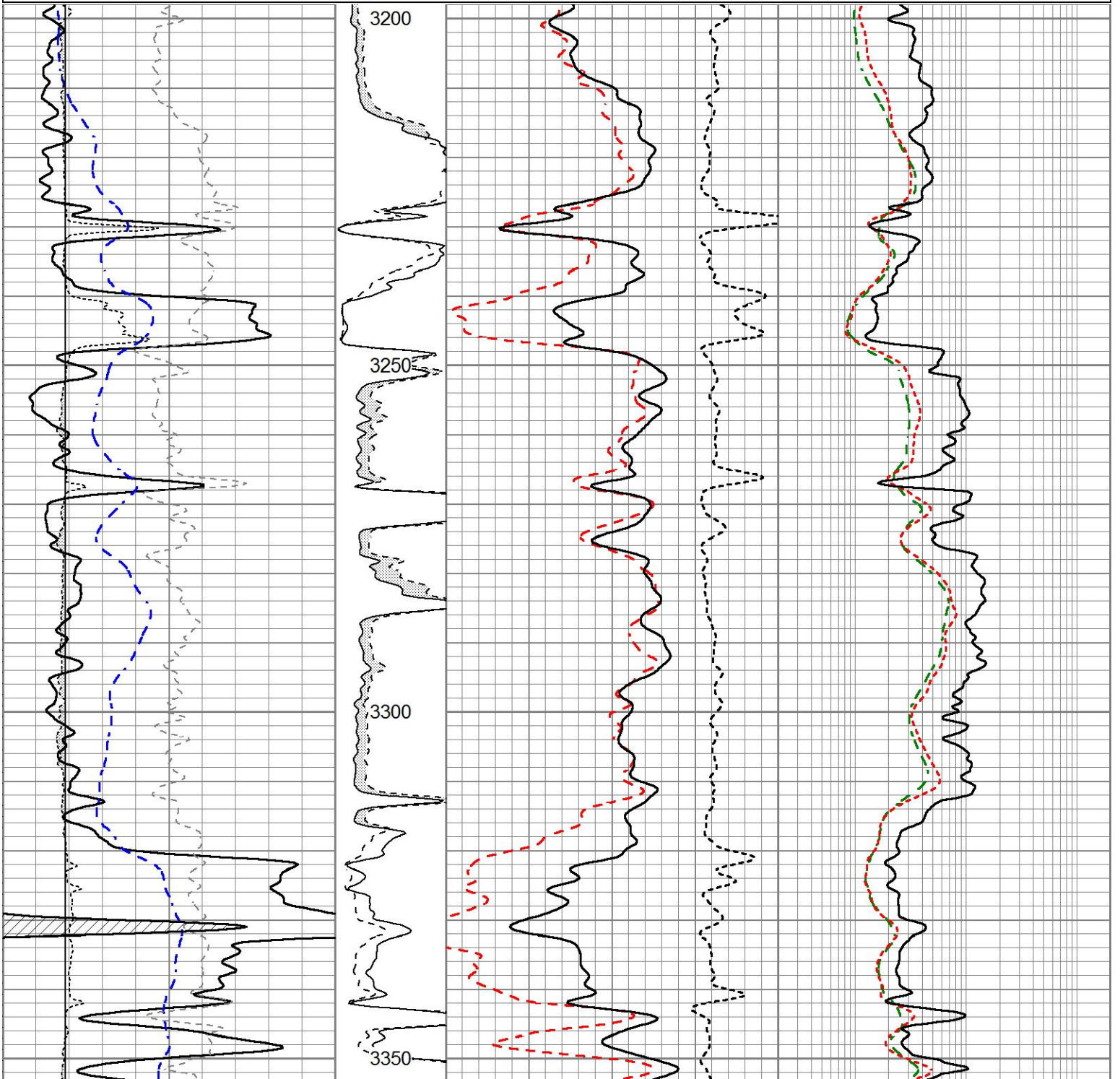


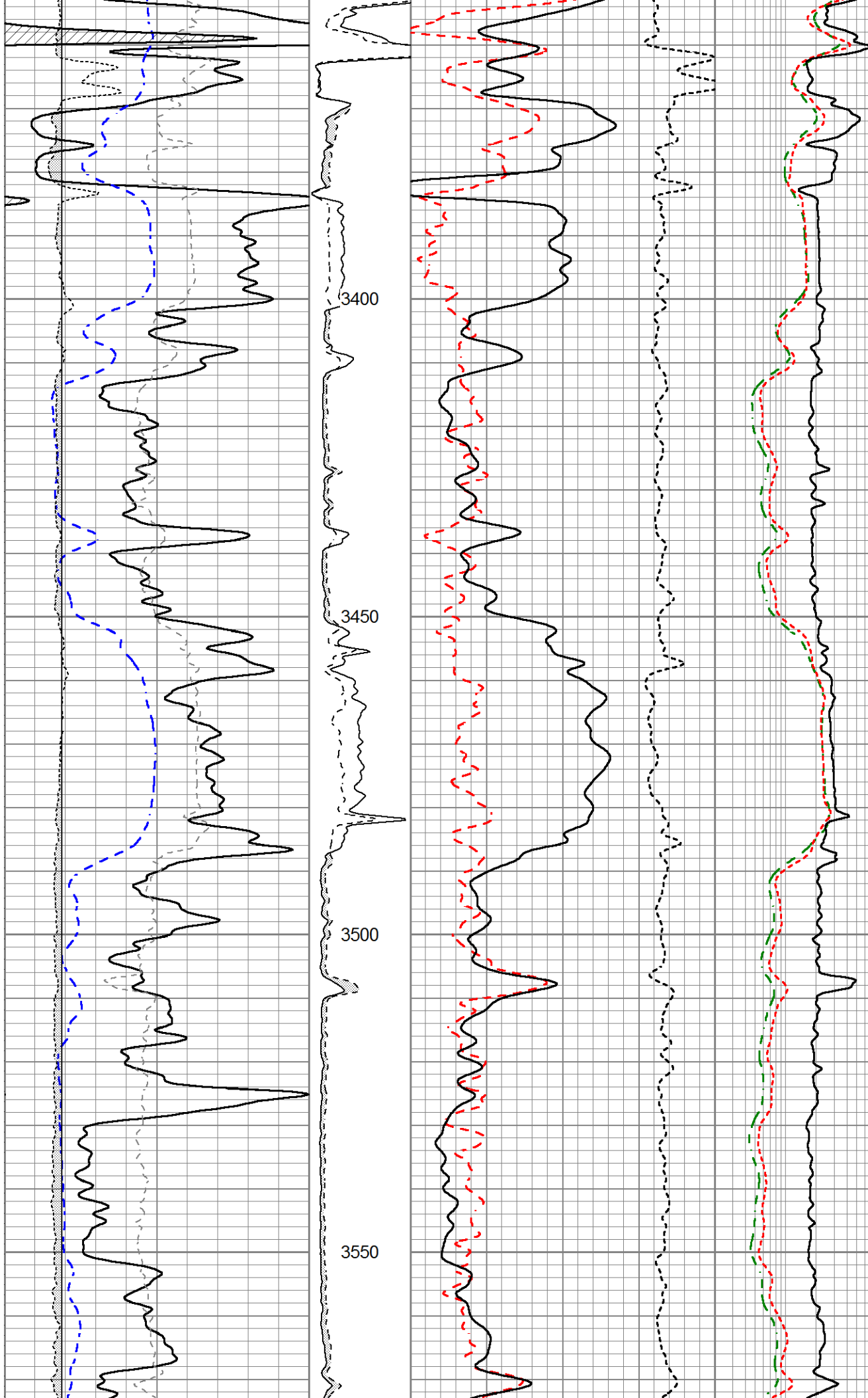


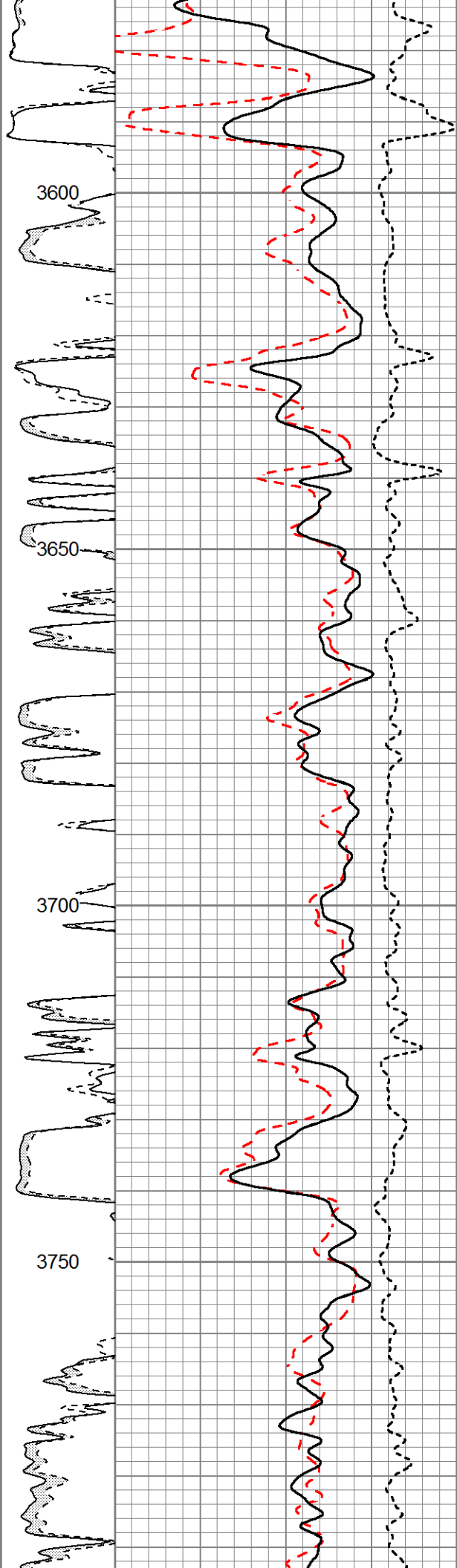
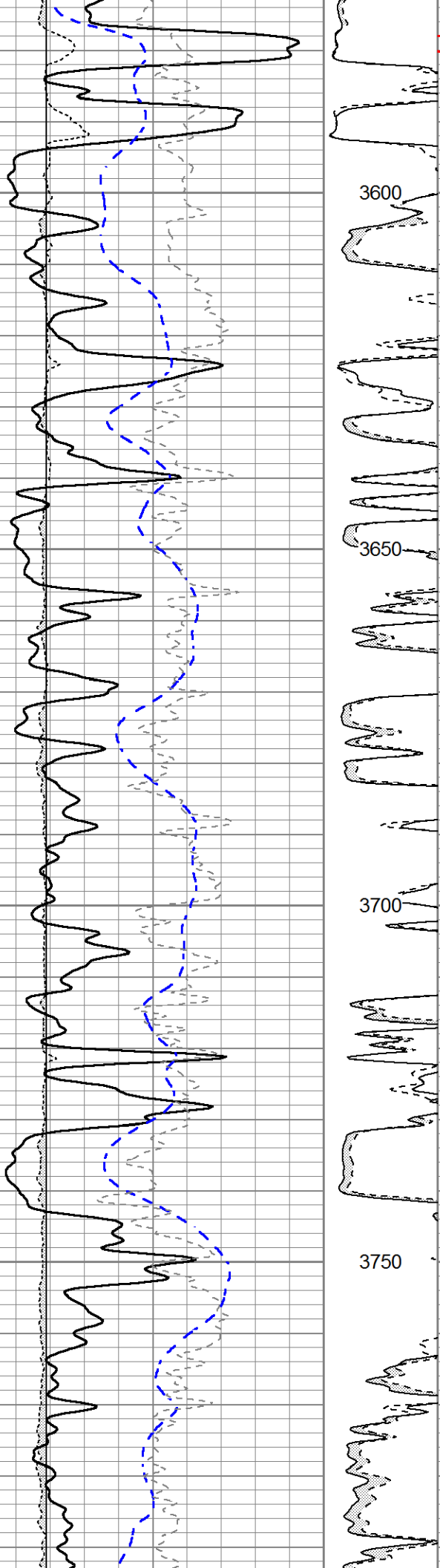
MAIN SECTION

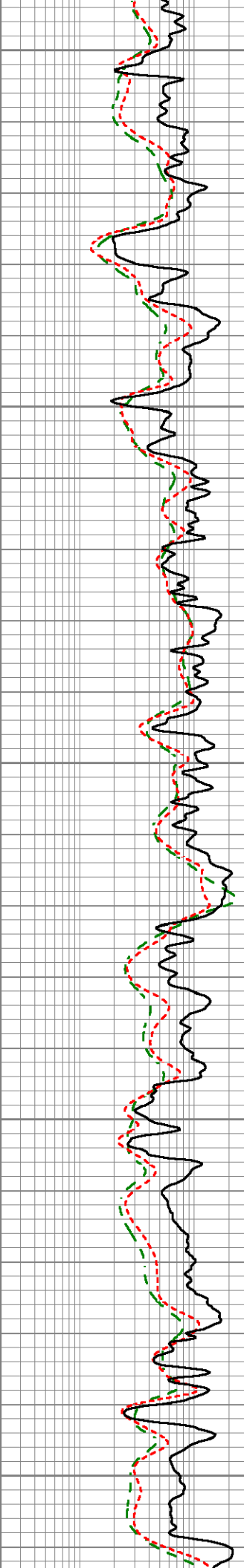
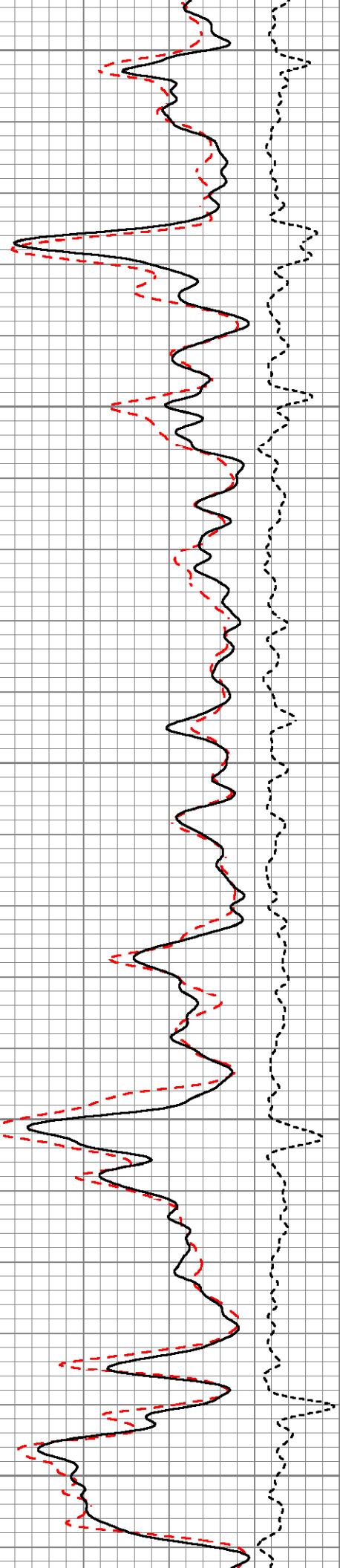
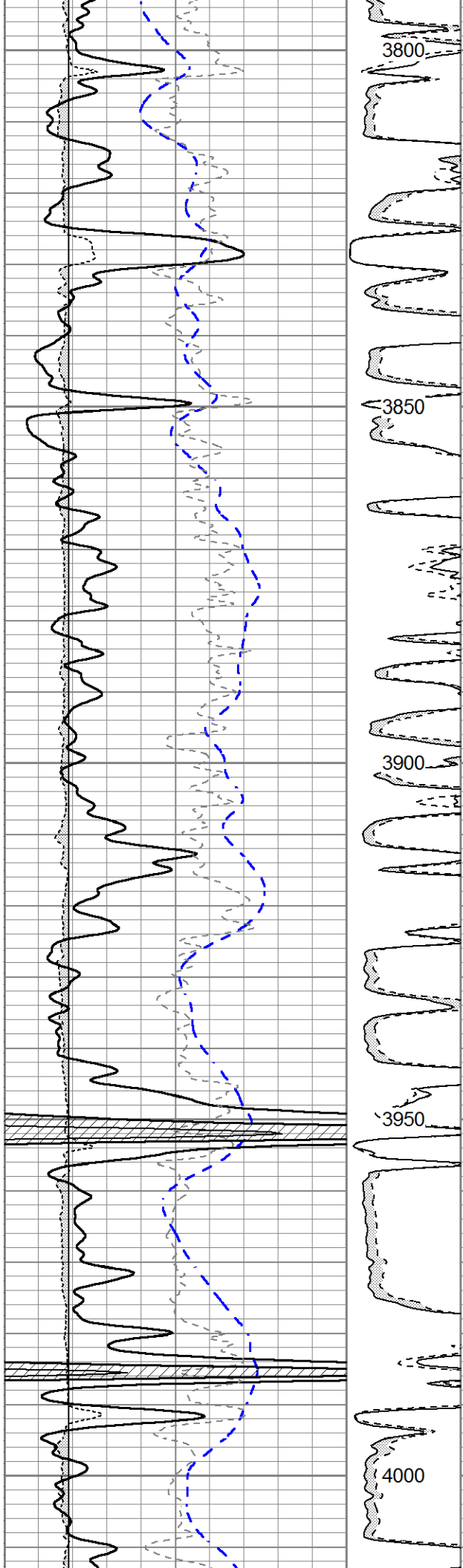
Database File 8630ddn.db
 Dataset Pathname pass3.1R
 Presentation Format _ritchie
 Dataset Creation Mon Jun 03 11:08:14 2024
 Charted by Depth in Feet scaled 1:240

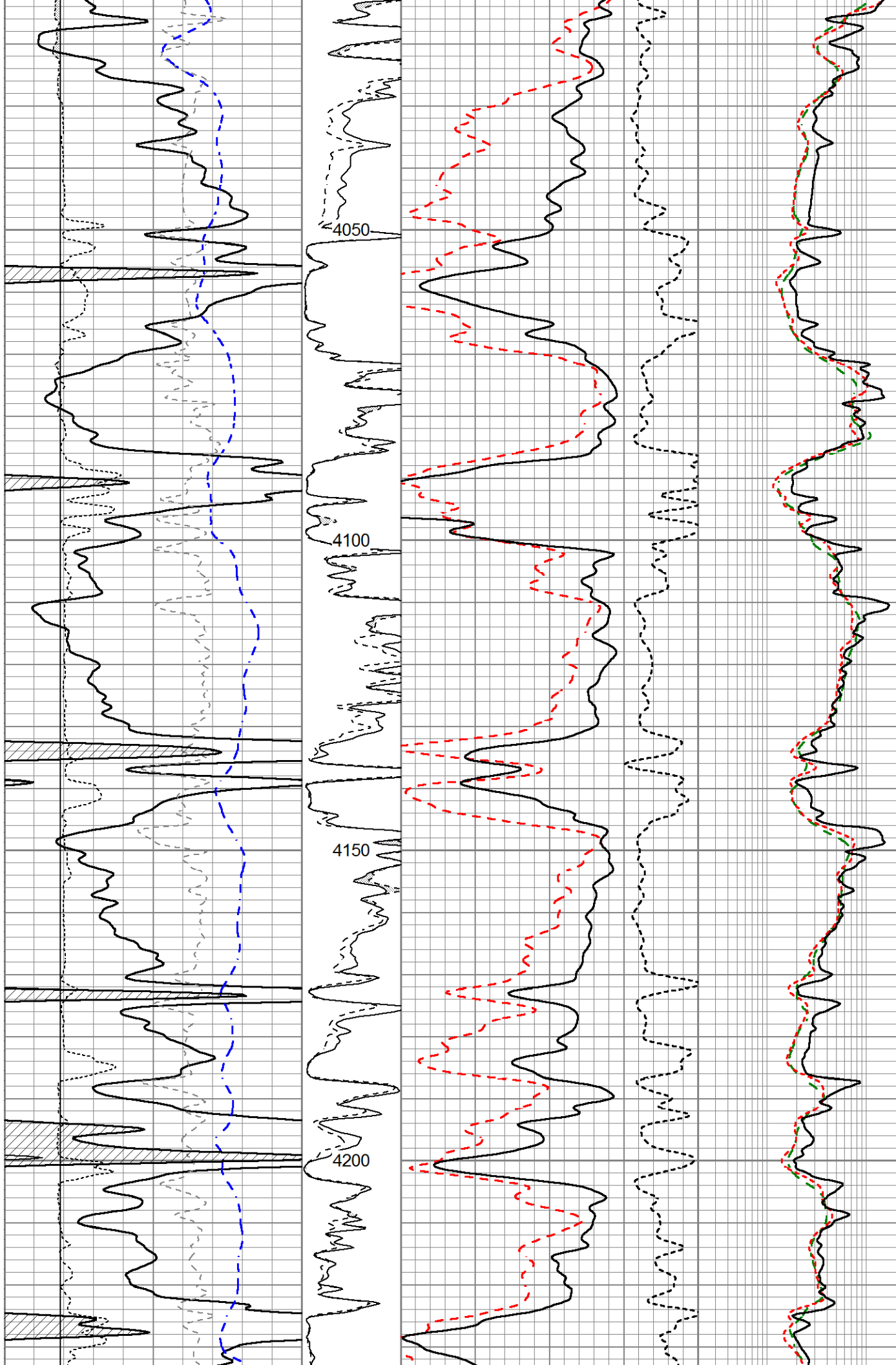
0	Gamma Ray (GAPI)	150	MEL15	30	CN Porosity (pu)	-10	0.2	Deep Resistivity (Ohm-m)	2000
-100	SP (mV)	100	(Ohm-m)	30	Density Porosity (pu)	-10		Medium Resistivity	
-200	RxoRt	100	0 40		CORRECTION		0.2	(Ohm-m)	2000
6	DCAL (in)	16	MEL20		-0.25 (g/cc)	0.25		Shallow Resistivity	
			(Ohm-m)				0.2	(Ohm-m)	2000
			0 40						

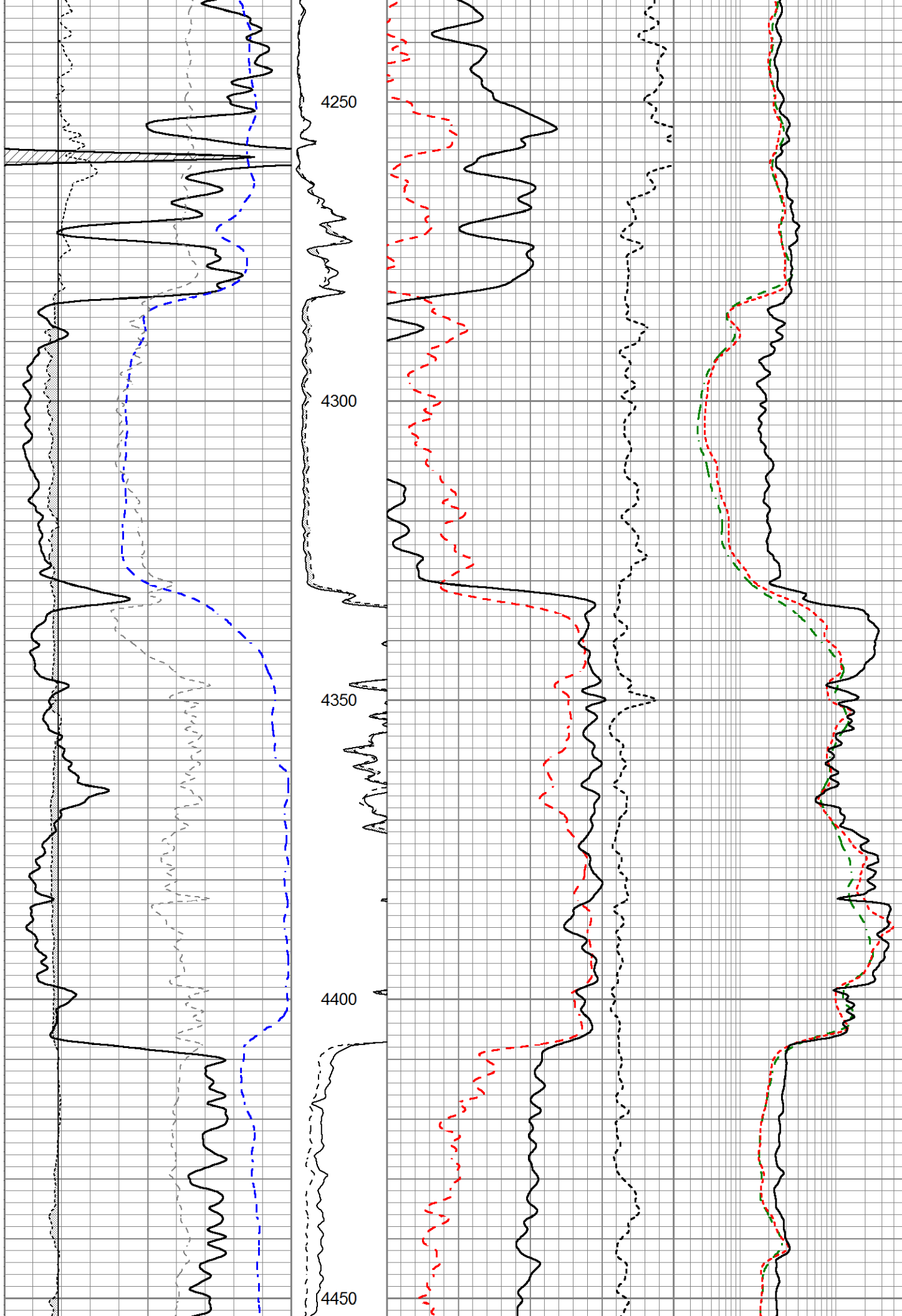


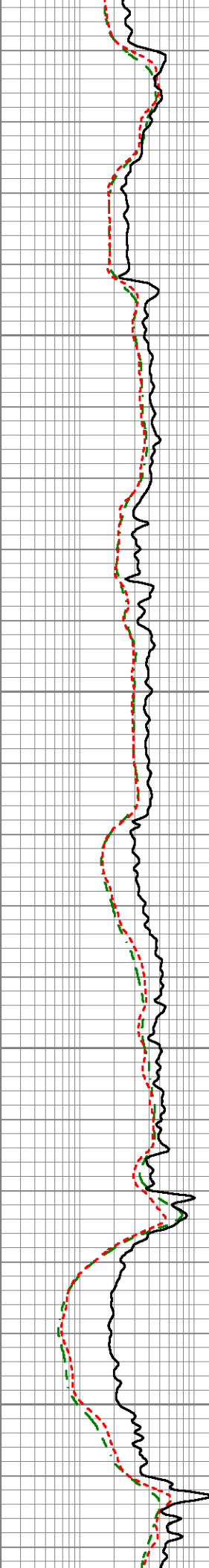
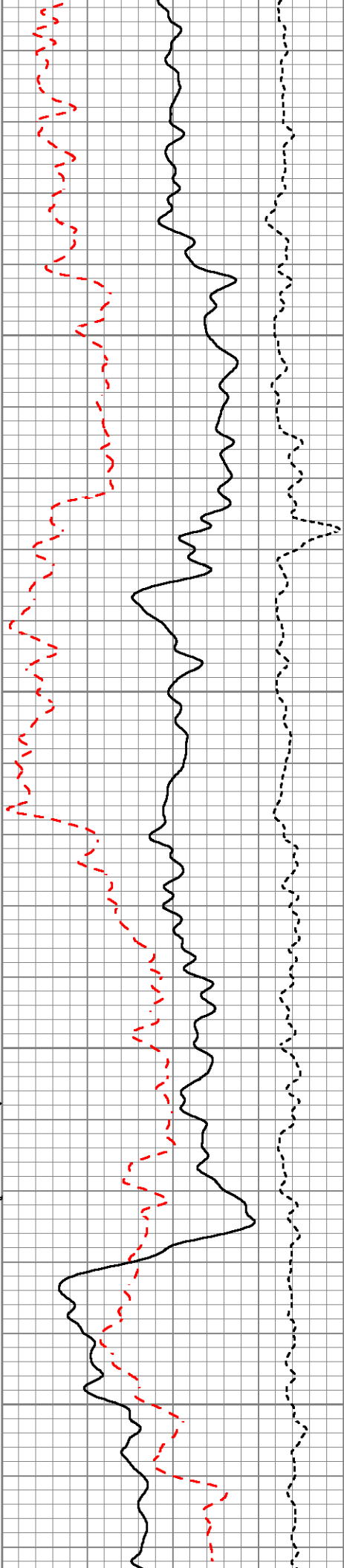
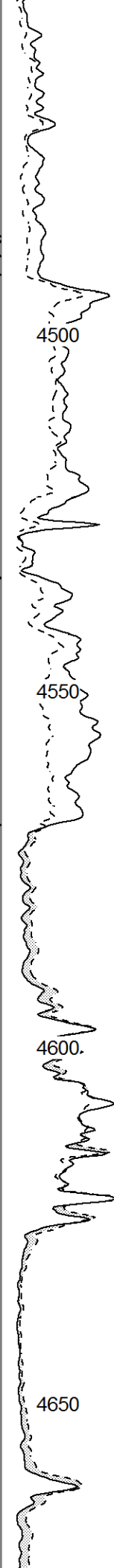
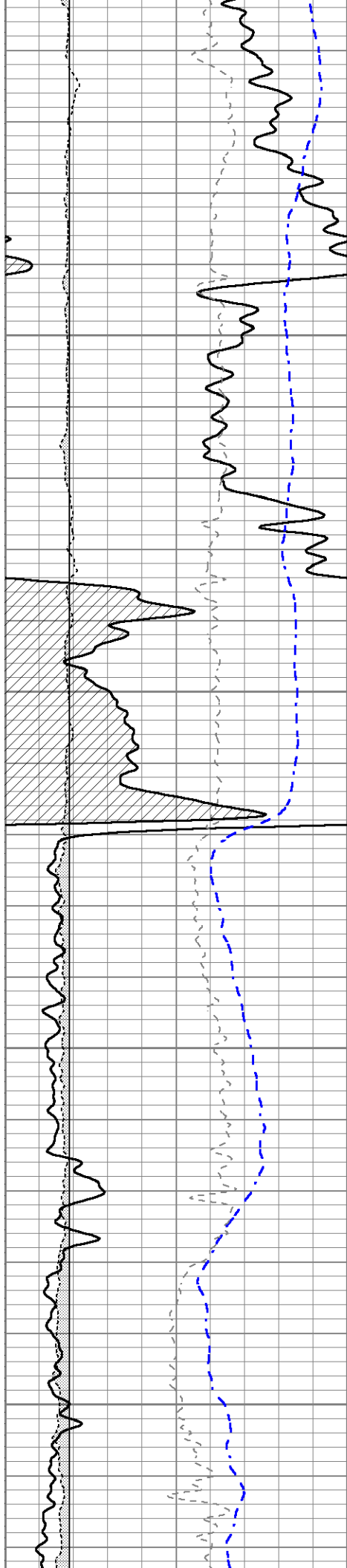


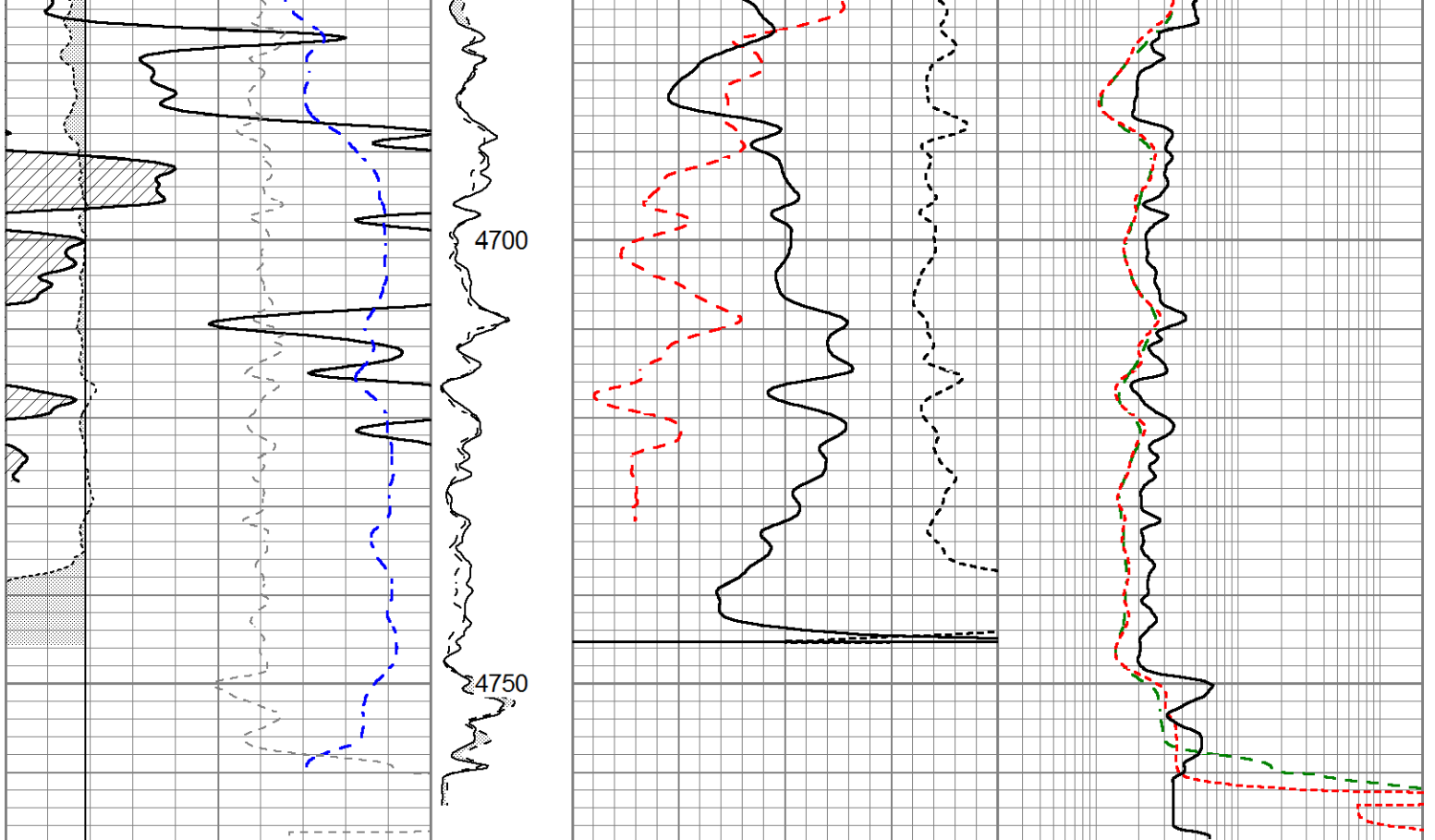












0	Gamma Ray (GAPI)	150
-100	SP (mV)	100
-200	RxoRt	100
6	DCAL (in)	16

MEL15	30	40
(Ohm-m)		
MEL20	30	40
(Ohm-m)		

CN Porosity (pu)	-10
Density Porosity (pu)	-10
CORRECTION	
-0.25 (g/cc)	0.25

0.2	Deep Resistivity (Ohm-m)	2000
0.2	Medium Resistivity	2000
0.2	Shallow Resistivity	2000