

SONIC LOG



Company ARCADIAN RESOURCES, LLC.
 Well UNRUH #1
 Field UNNAMED
 County SCOTT State KANSAS

Location: API #: 15-171-21322-0000
 1095 FSL & 2145 FEL
 NE - NW - SW - SE
 SEC 19 TWP 16S RGE 34W
 Permanent Datum GROUND LEVEL Elevation 3163
 Log Measured From KELLY BUSHING 7' A.G.L
 Drilling Measured From KELLY BUSHING
 Other Services
 CDL/CNL/PE
 DIL/MEL
 Elevation
 K.B. 3170
 D.F. 3168
 G.L. 3163

Date	6/28/24		
Run Number	TWO		
Depth Driller	4869		
Depth Logger	4868		
Bottom Logged Interval	4860		
Top Log Interval	250		
Casing Driller	8.625 @ 250		
Casing Logger	250		
Bit Size	7.875		
Type Fluid in Hole	CHEMICAL MUD	CHLORIDES 6,000 PPM	
Density / Viscosity	9.2/61		
pH / Fluid Loss	9.54/9.2		
Source of Sample	FLOWLINE		
Rm @ Meas. Temp	.650 @ 82F		
Rmf @ Meas. Temp	.488 @ 82F		
Rmc @ Meas. Temp	.780 @ 82F		
Source of Rmf / Rmc	MEASUREMENT		
Rm @ BHT	.430 @ 124F		
Time Circulation Stopped	4 HOURS		
Time Logger on Bottom	6:15 P.M.		
Maximum Recorded Temperature	124F		
Equipment Number	3802		
Location	HAYS, KANSAS		
Recorded By	COLE ROBBEN		
Witnessed By	SEAN DEENIHAN		

<<< Fold Here >>>

All interpretations are opinions based on inferences from electrical or other measurements and we cannot and do not guarantee the accuracy or correctness of any interpretation, and we shall not, except in the case of gross or willful negligence on our part, be liable or responsible for any loss, costs, damages, or expenses incurred or sustained by anyone resulting from any interpretation made by any of our officers, agents or employees. These interpretations are also subject to our general terms and conditions set out in our current Price Schedule.

Comments

THANK YOU FOR USING ELI WIRELINE SERVICES, HAYS, KS. (785) 628-6395

DIRECTIONS:

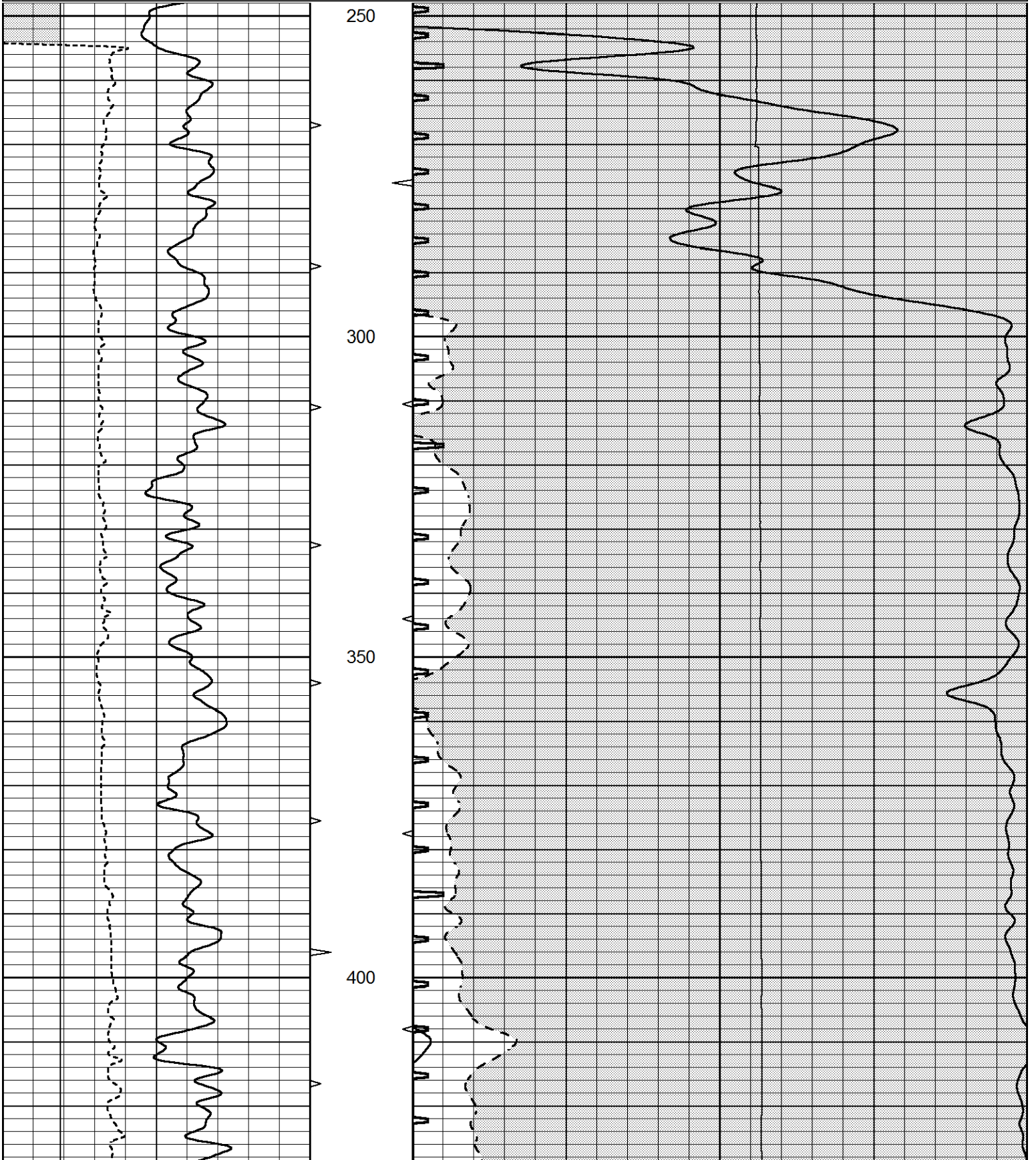
FROM PENCE, KANSAS GO WEST 2 MILES ON 270 ROAD, SOUTH 3/4 MILES ON APACHE ROAD, WEST INTO

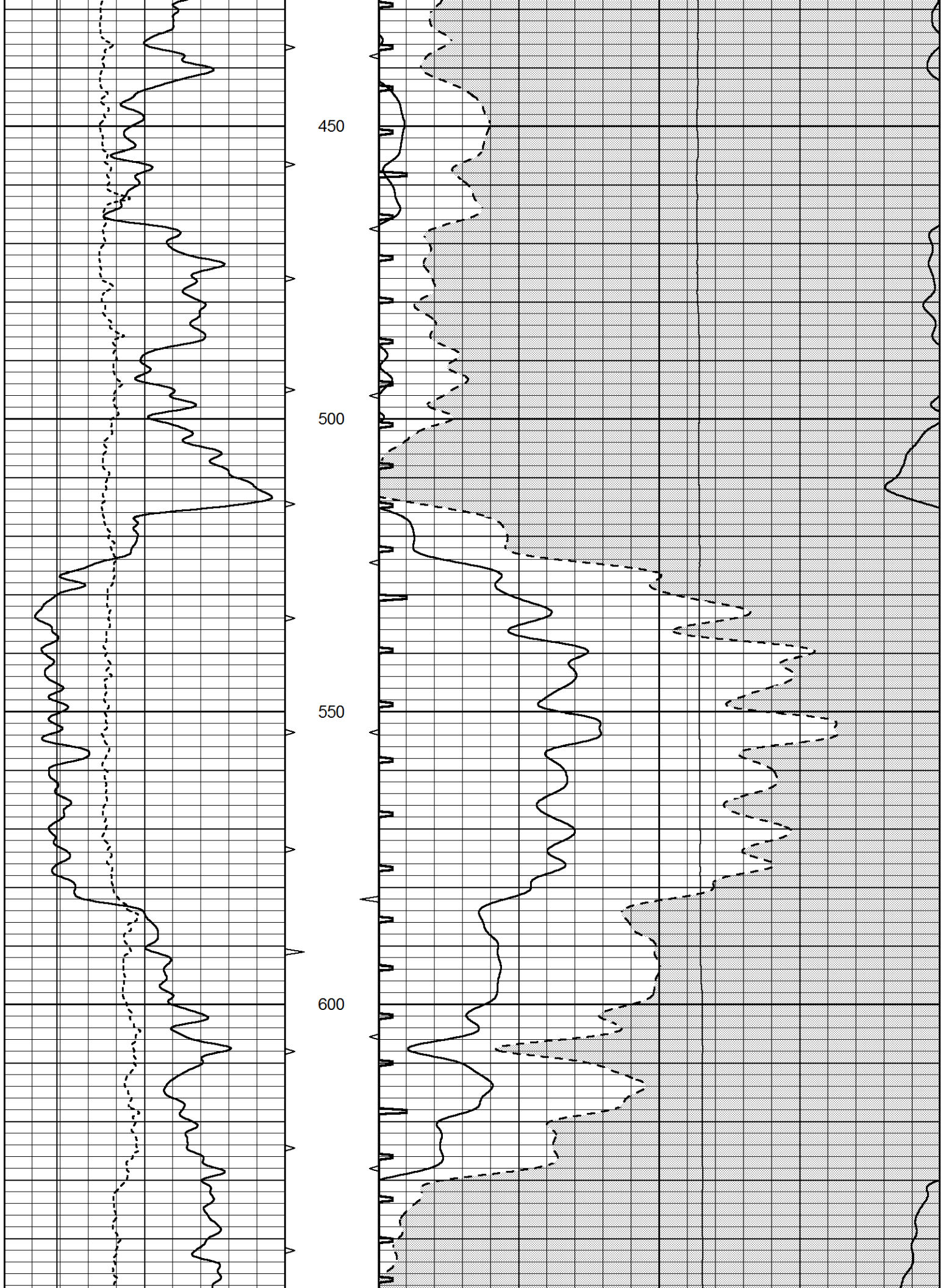


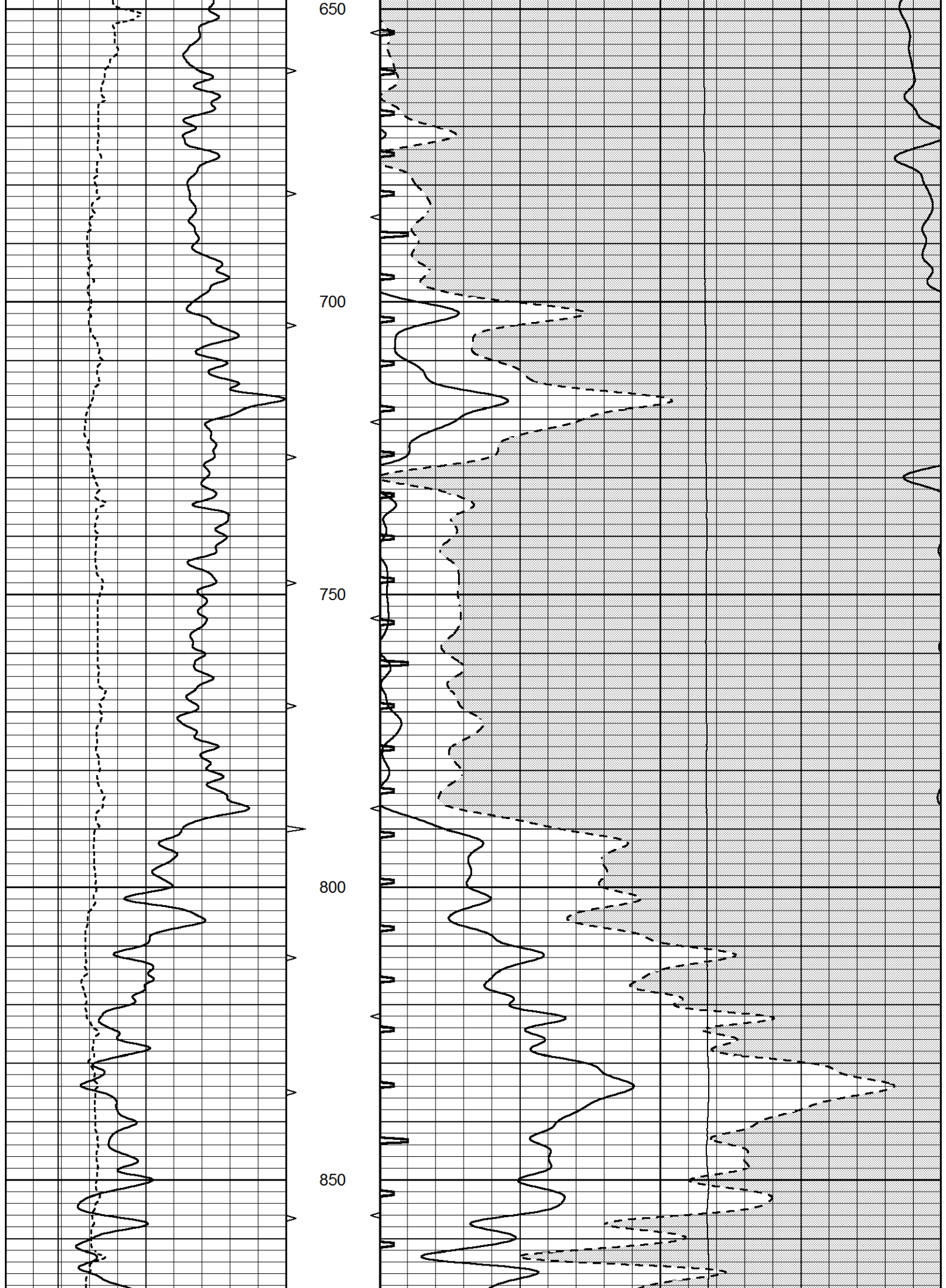
MAIN SECTION

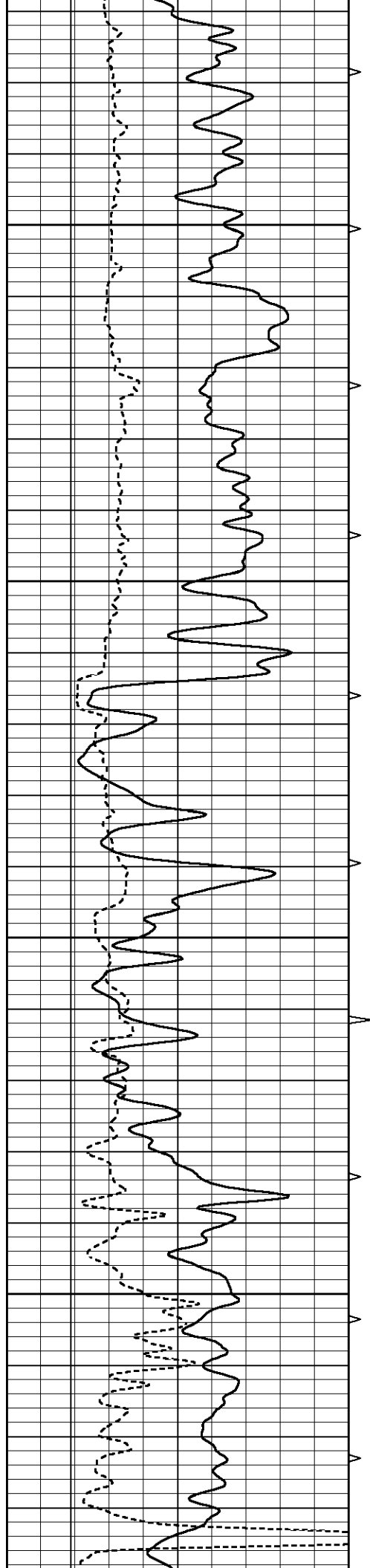
Database File 8792pe.db
 Dataset Pathname pass6.5
 Presentation Format _slt
 Dataset Creation Fri Jun 28 19:37:02 2024
 Charted by Depth in Feet scaled 1:240

0	GAMMA RAY (GAPI)	150	ABHV	140	DELTA TIME (usec/ft)		40
6	CALIPER (in)	16	10 (ft3)	0	SONIC POROSITY (pu)		-10
-----			TBHV	0	ITT (msec)	20	0
-----			0 (ft3)	10	LTEN (lb)		5000







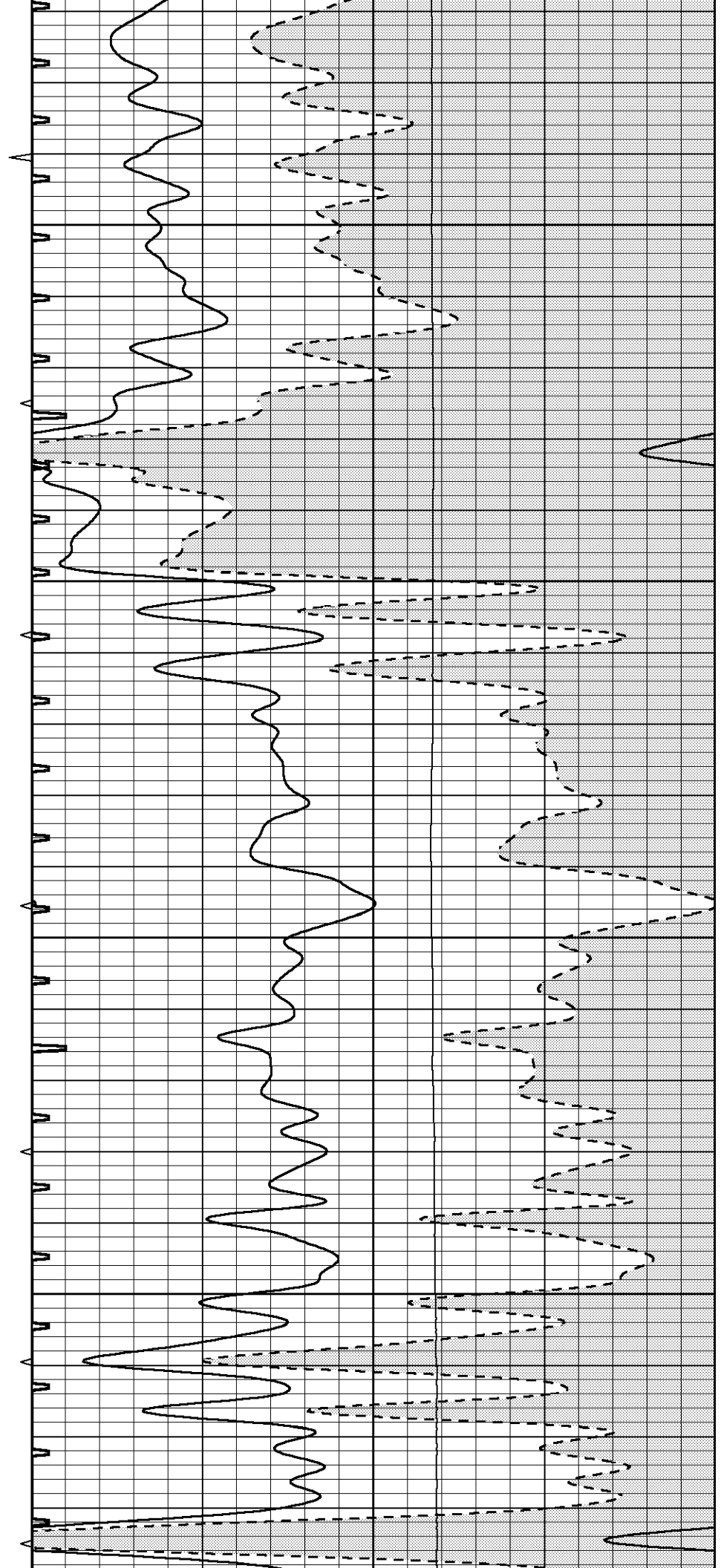


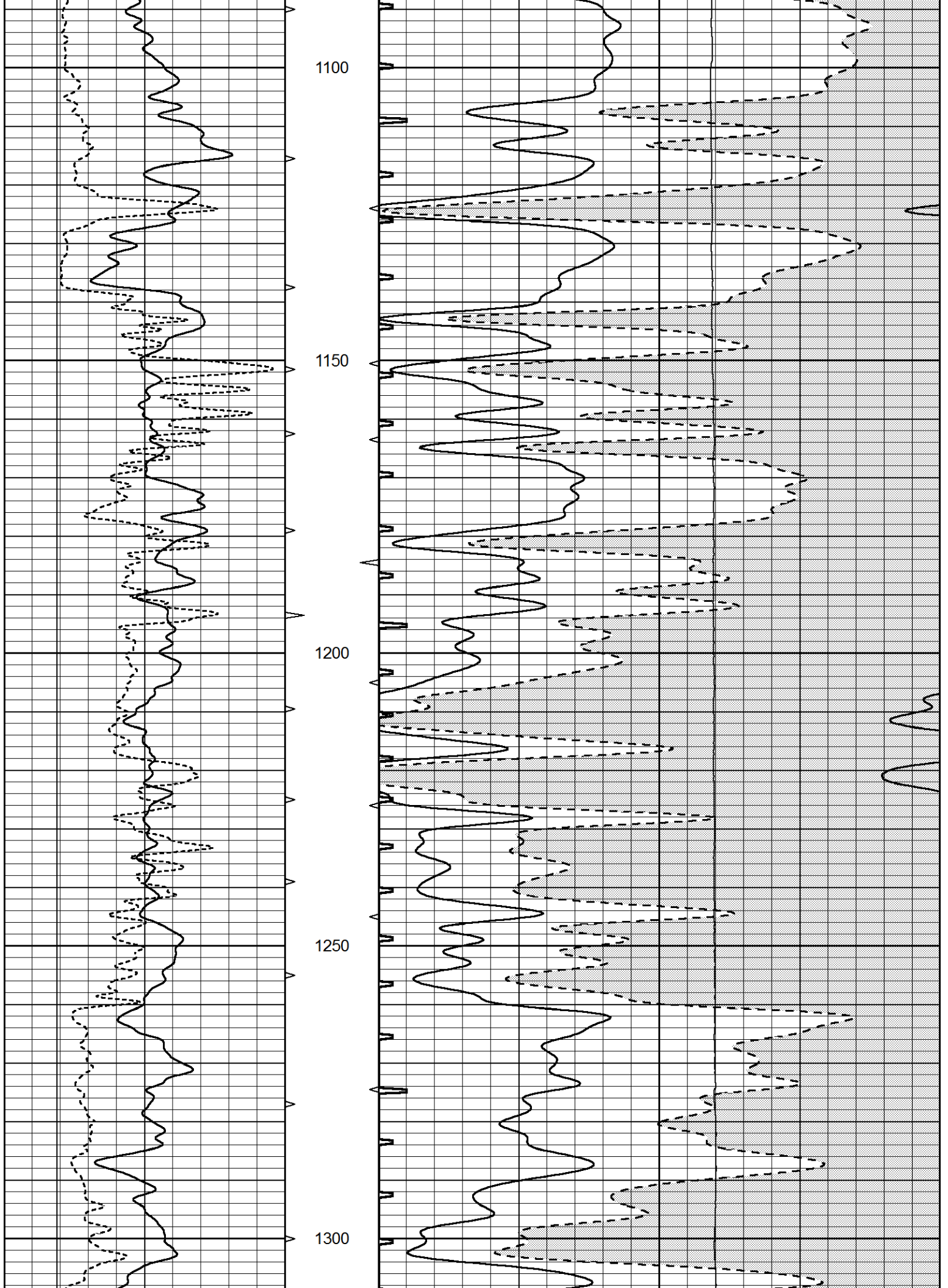
900

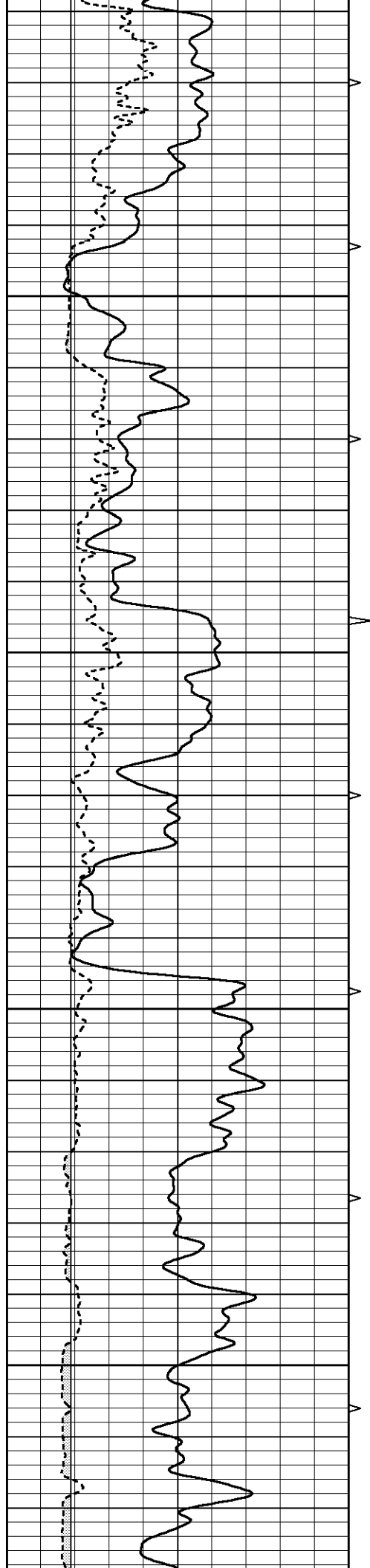
950

1000

1050





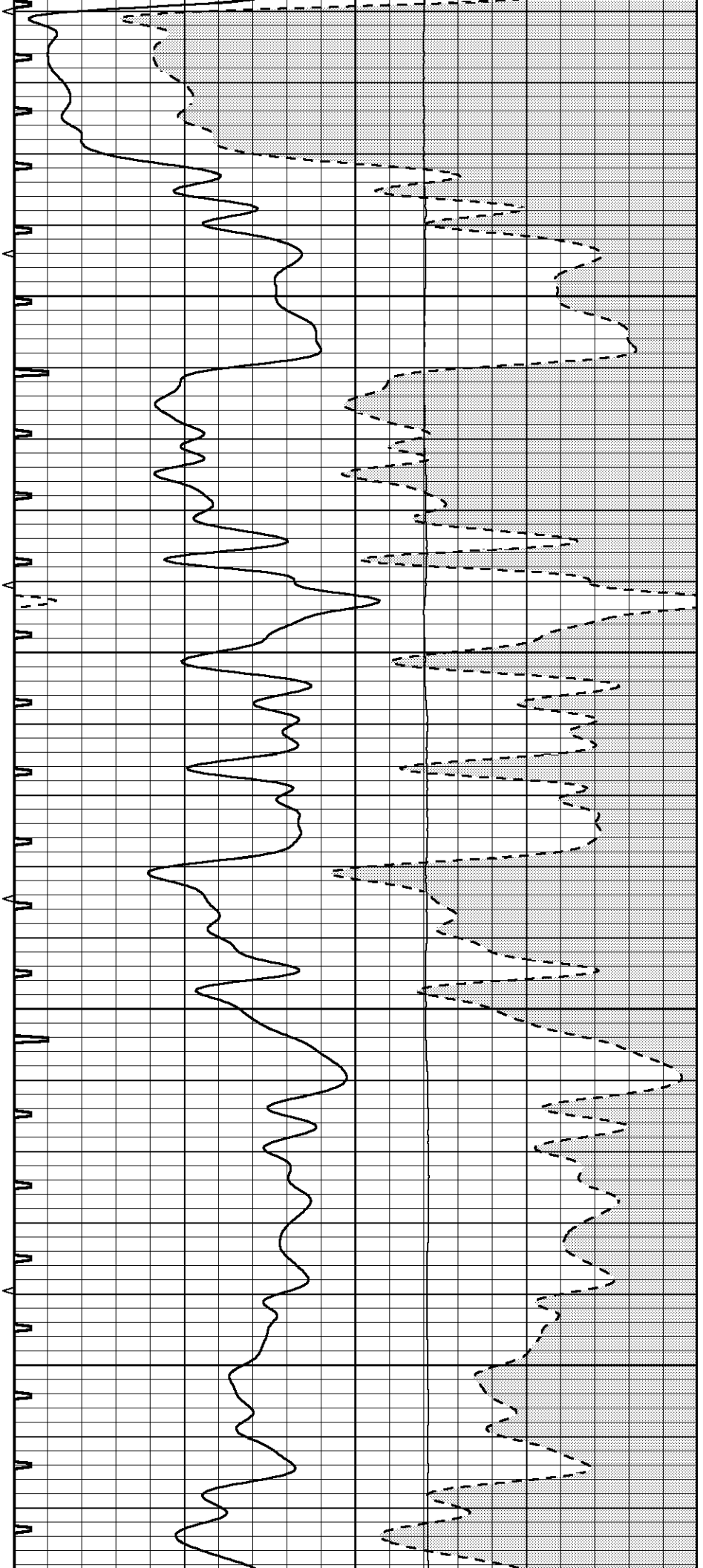


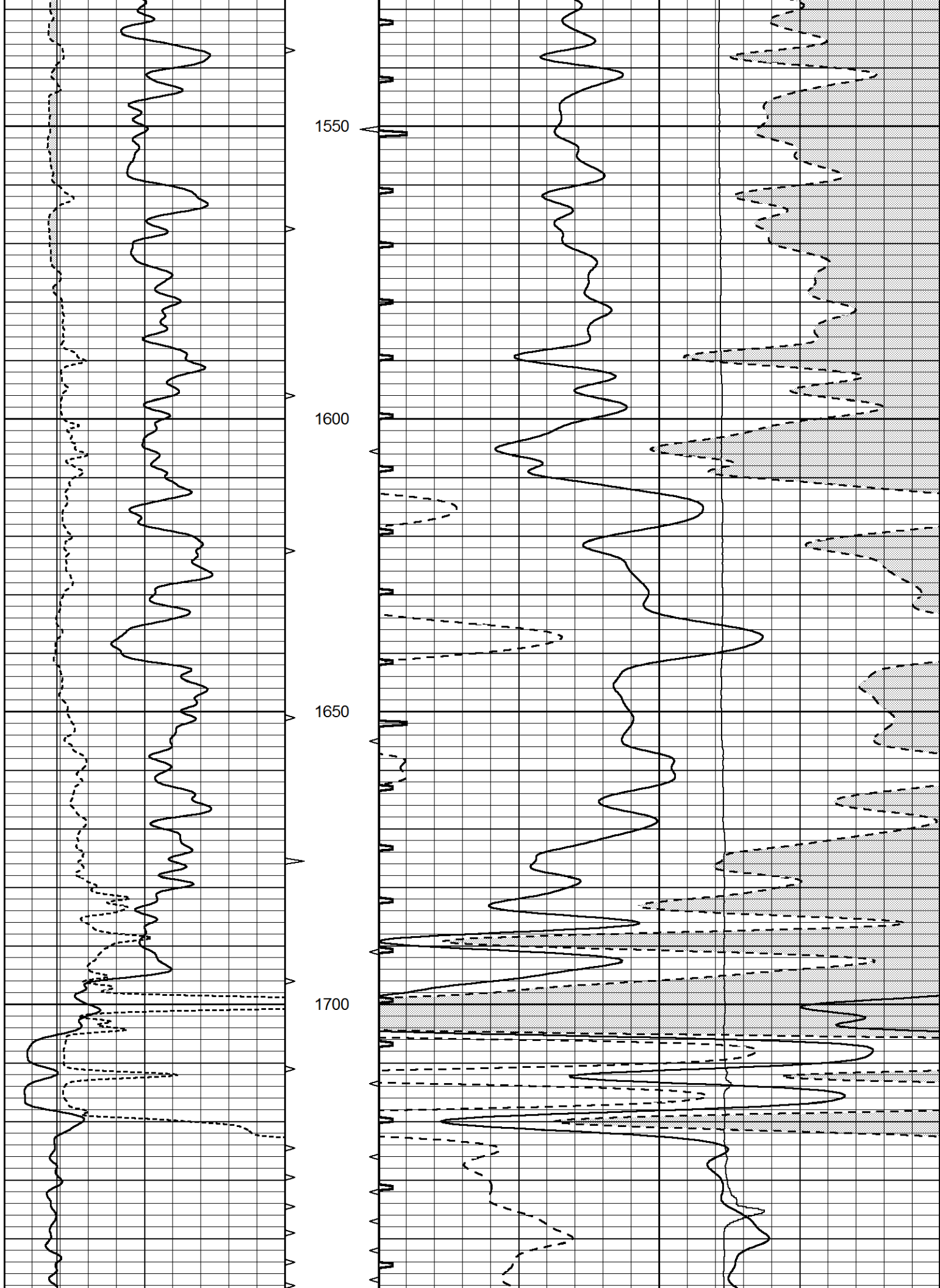
1350

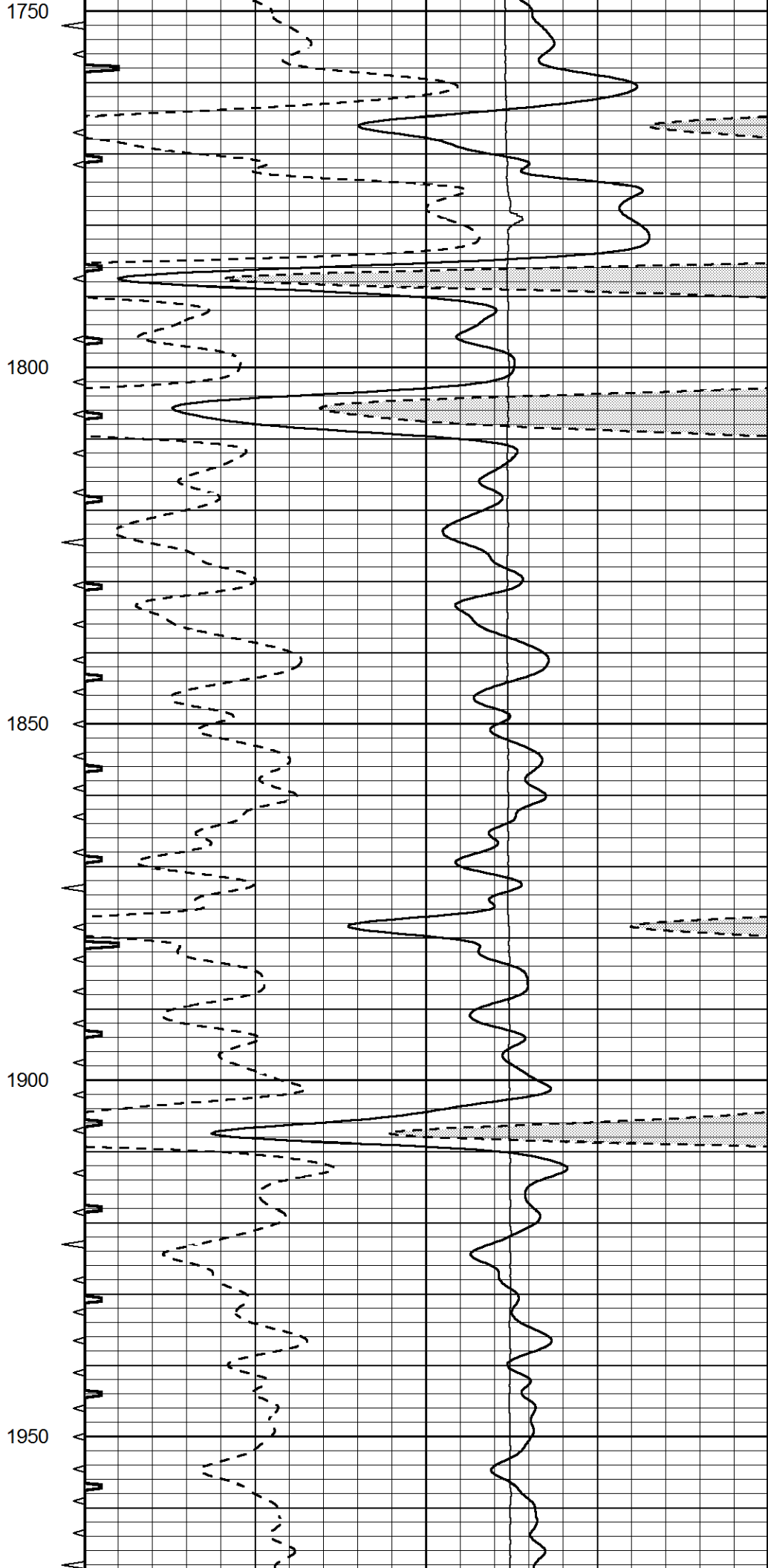
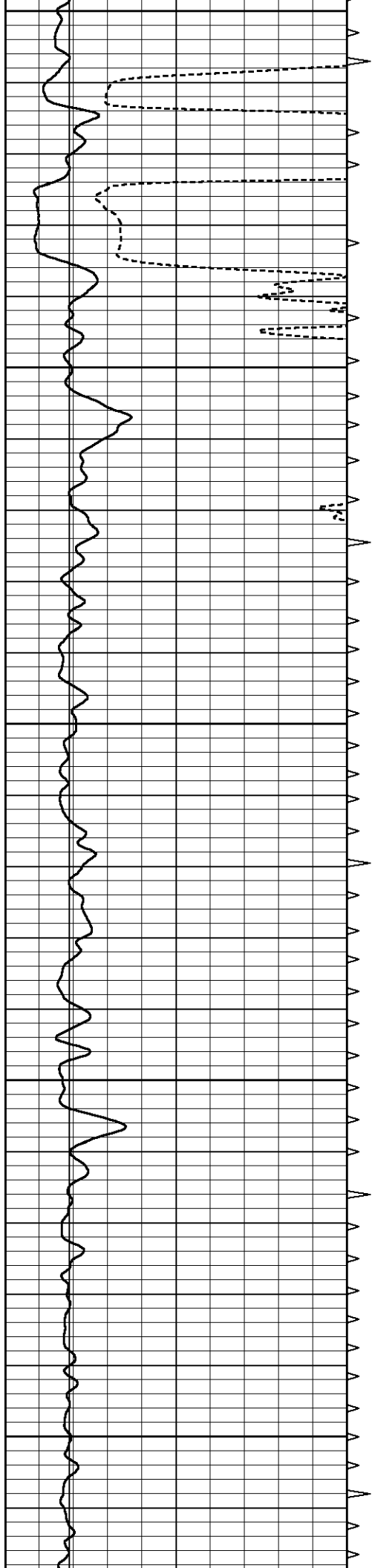
1400

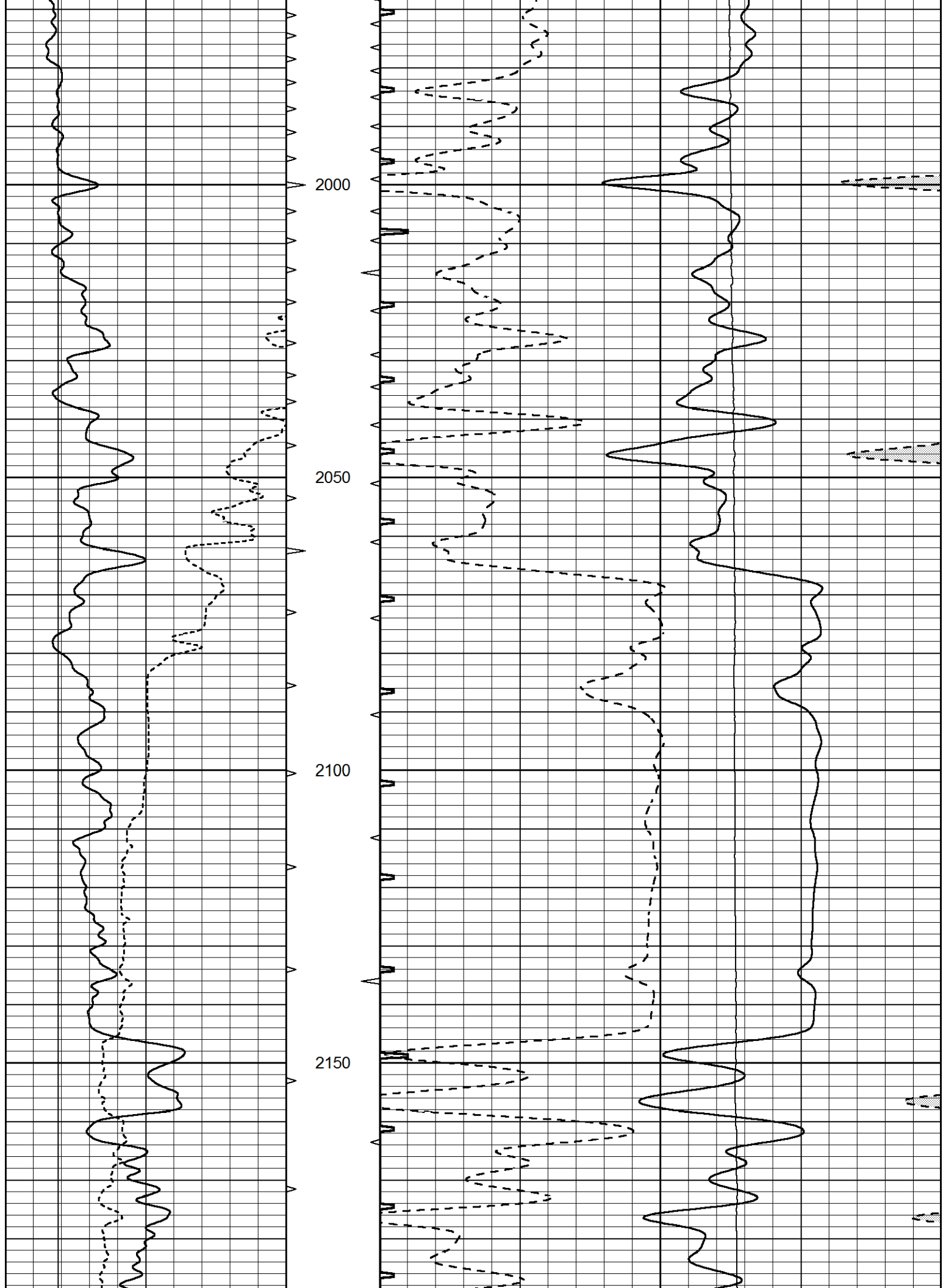
1450

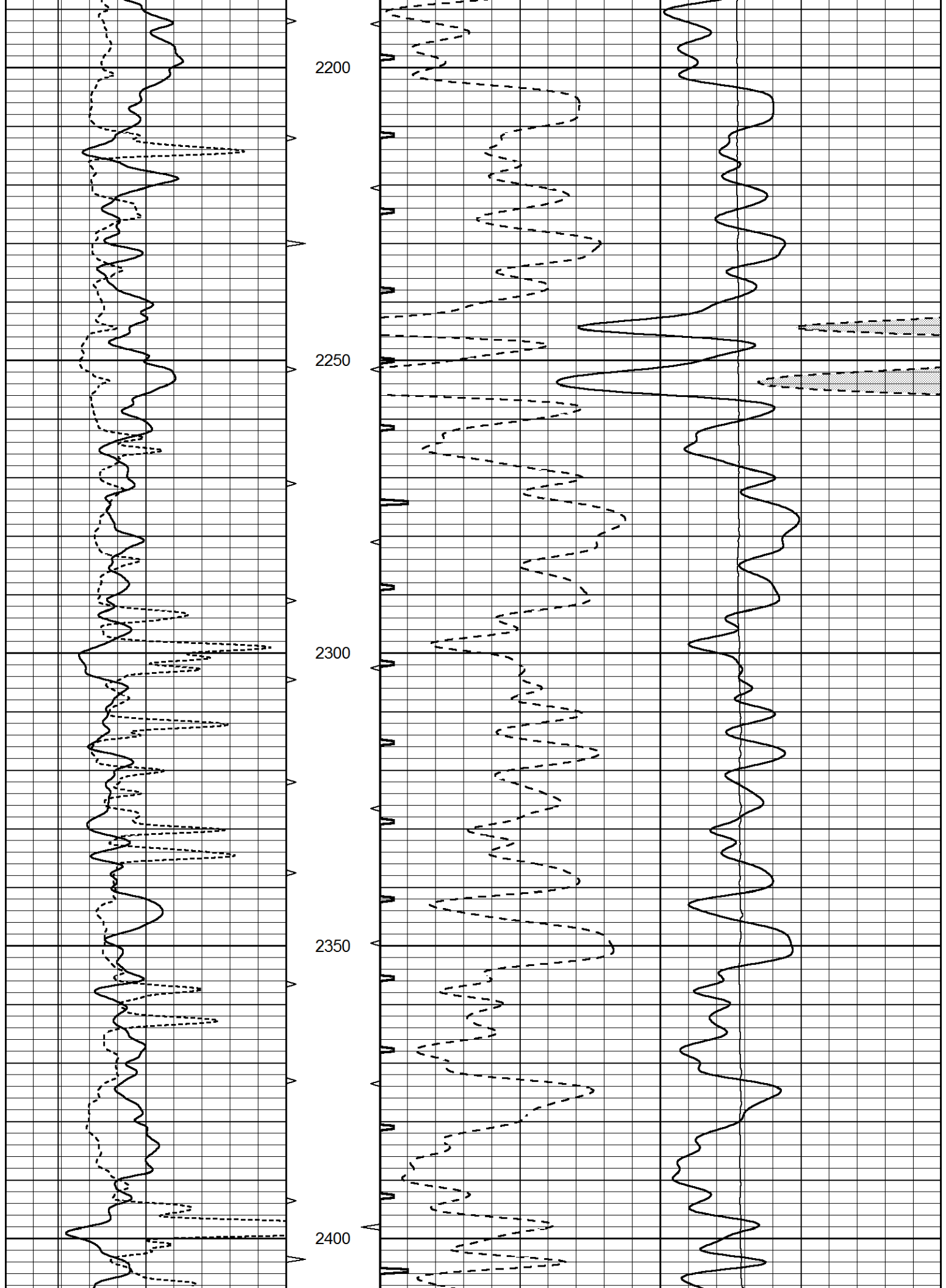
1500

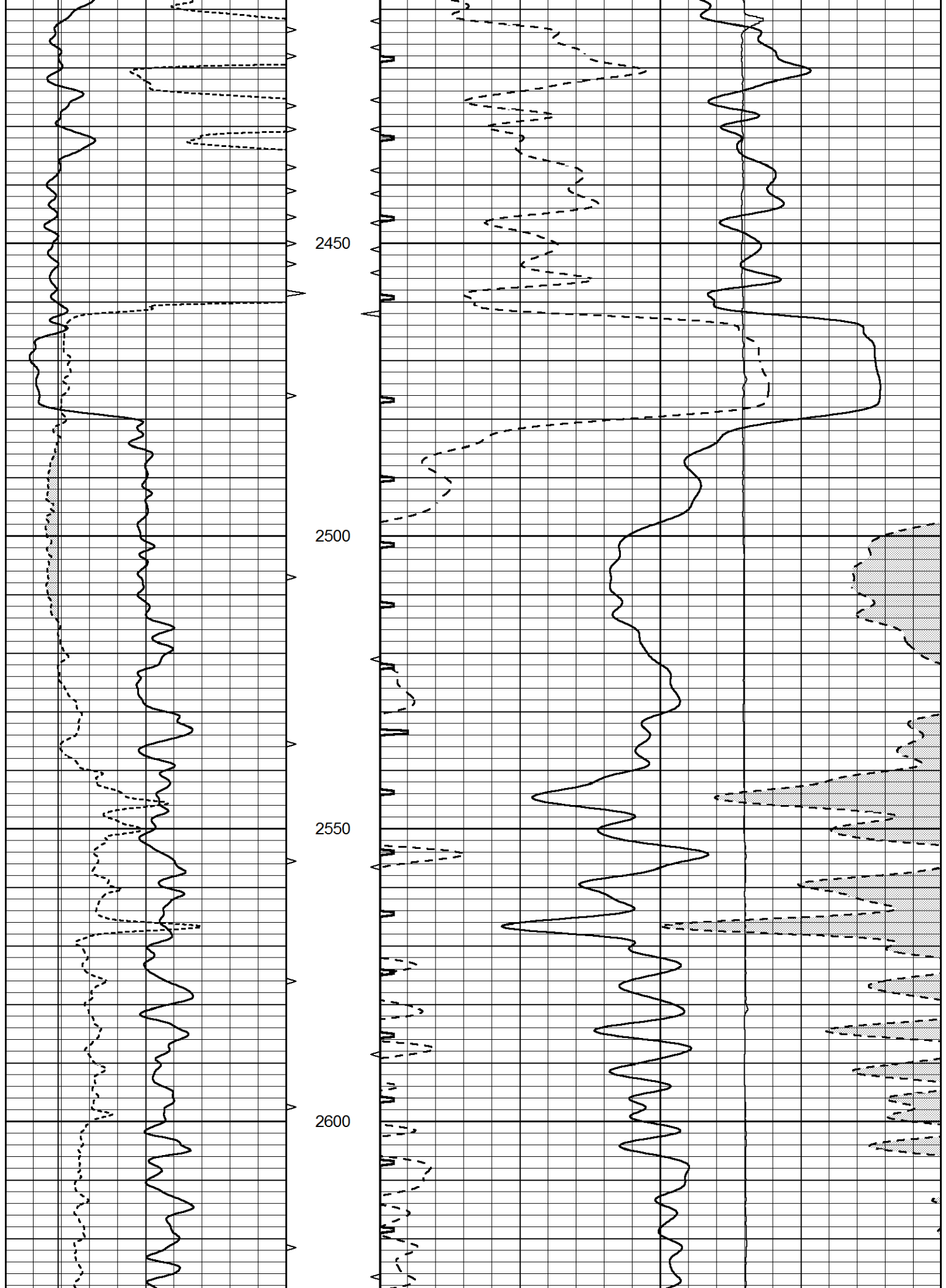


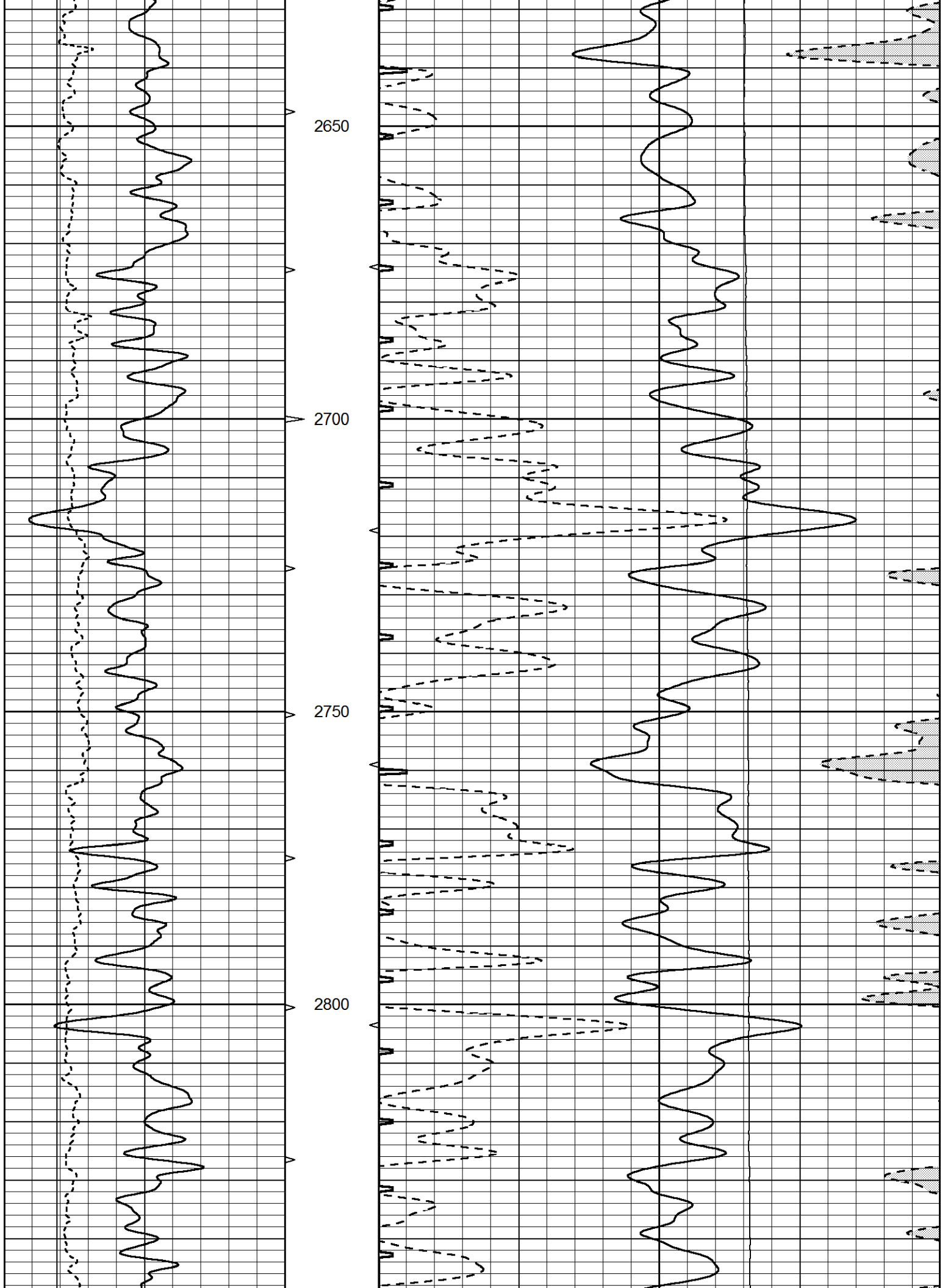


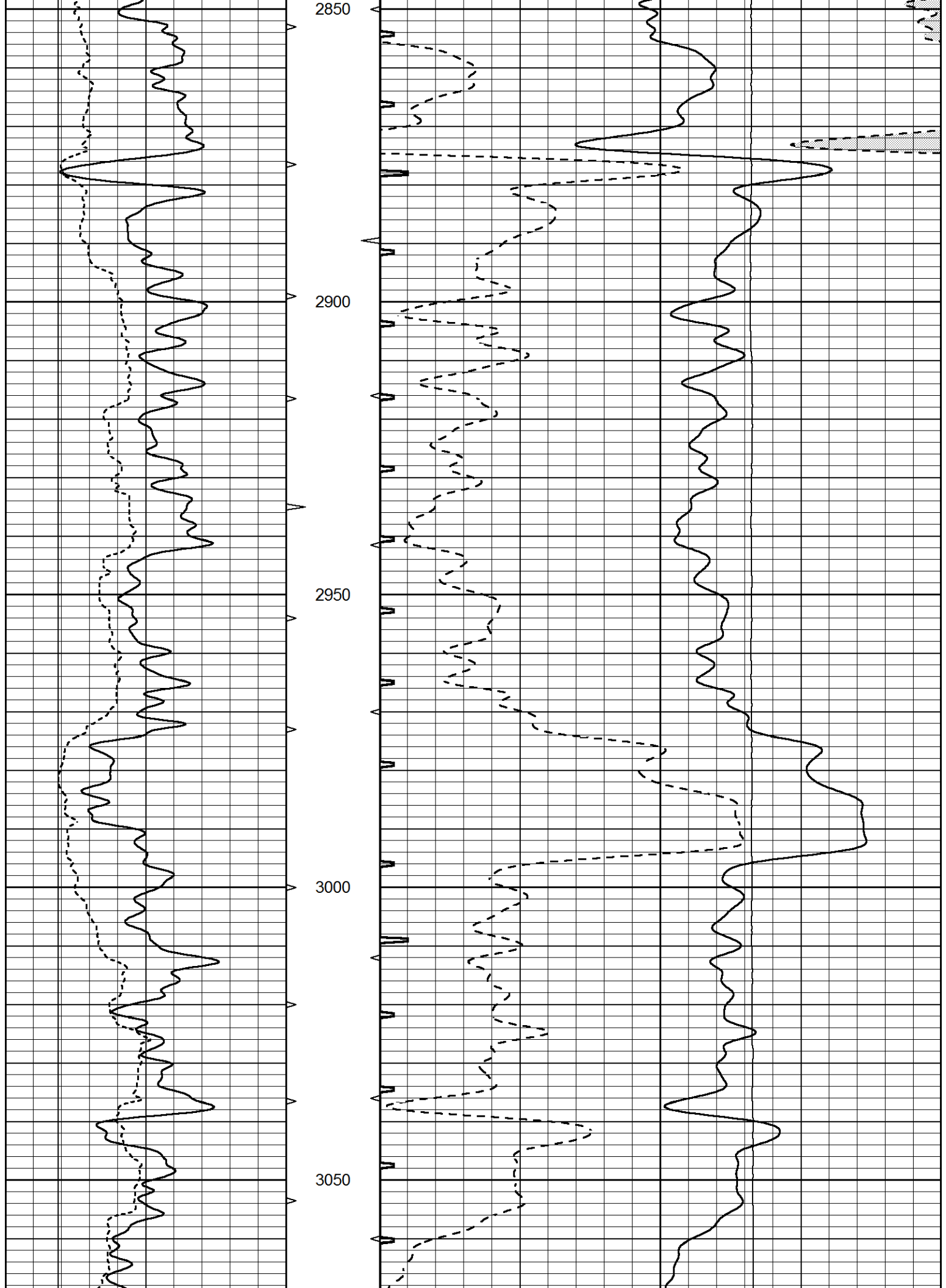


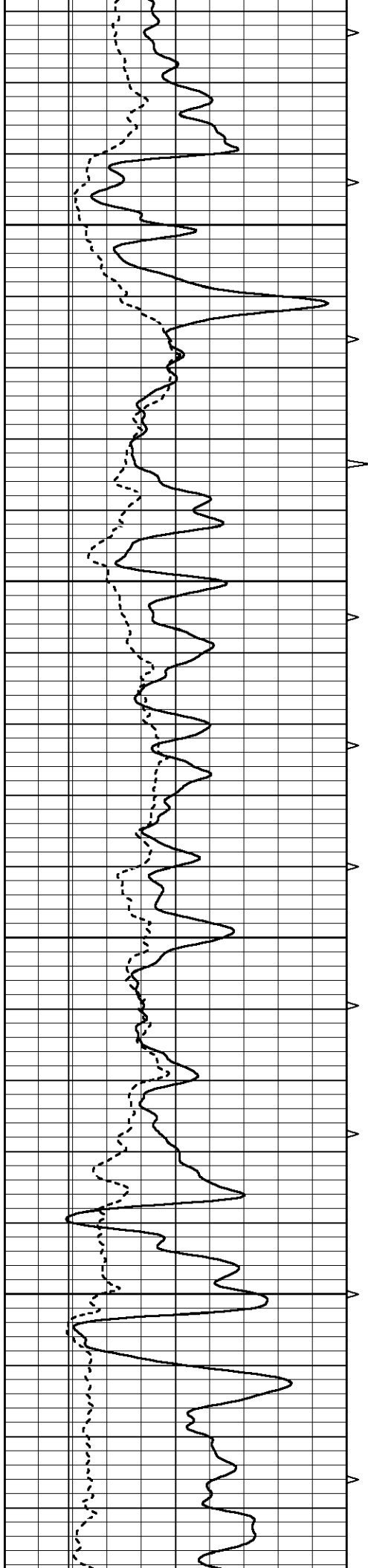










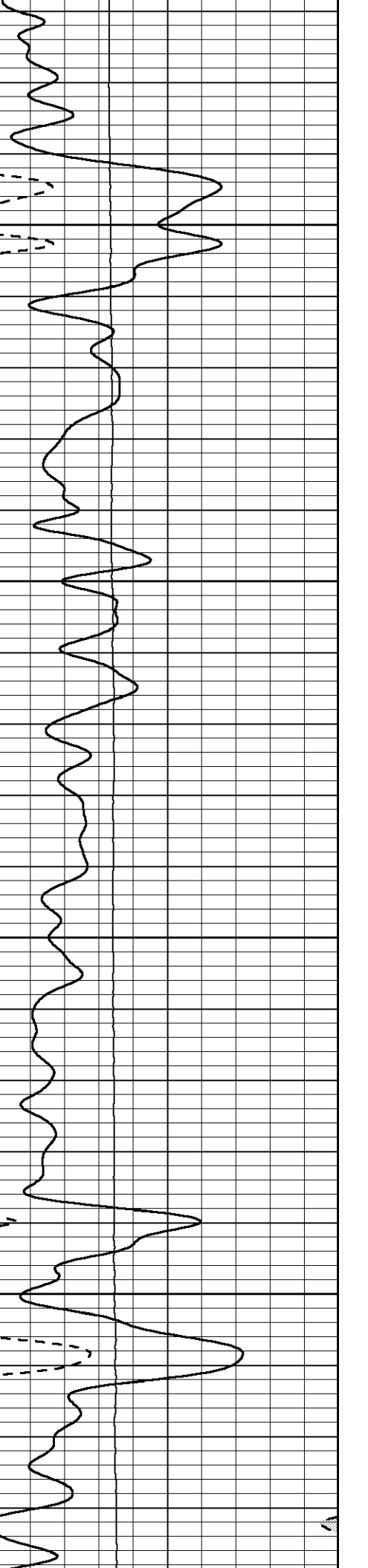
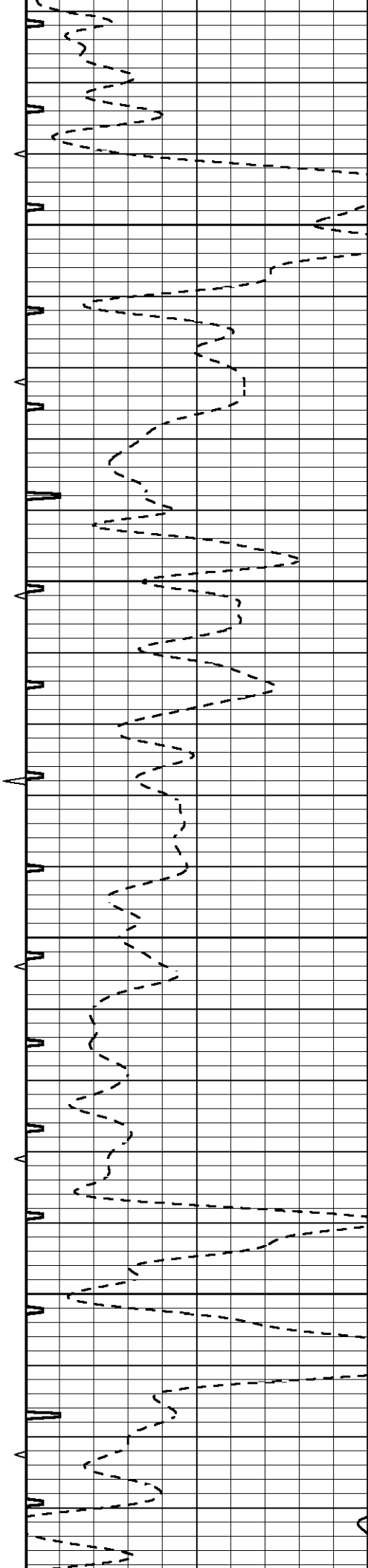


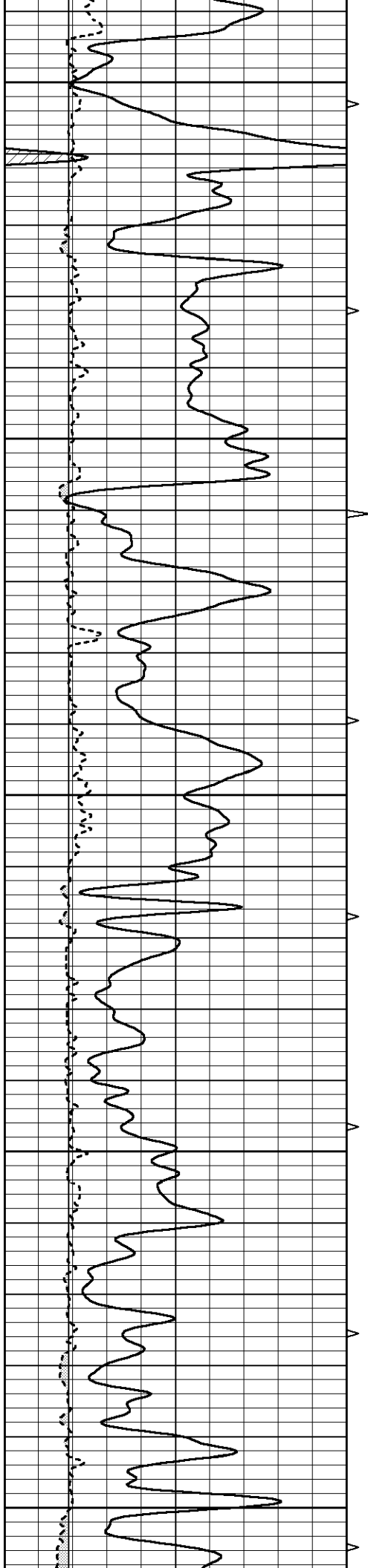
3100

3150

3200

3250





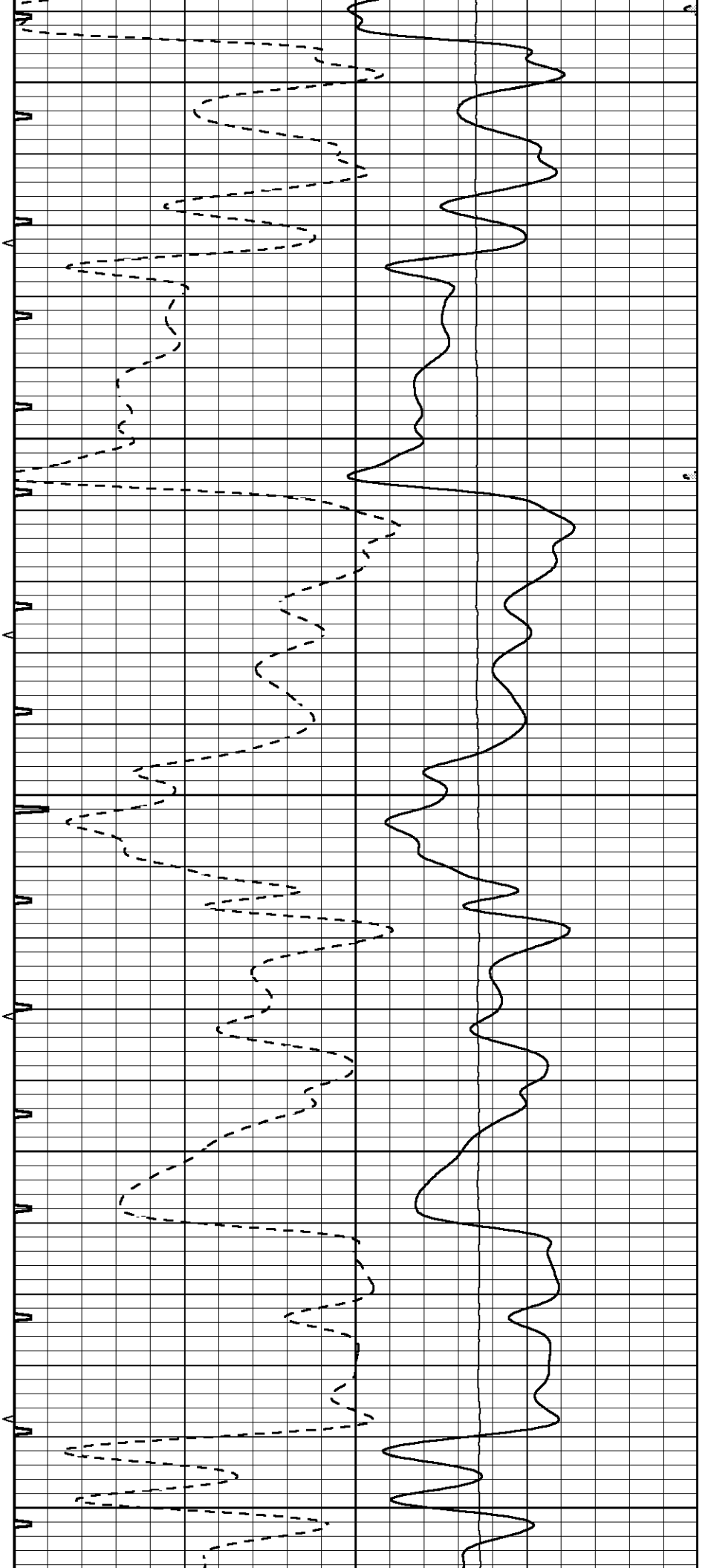
3300

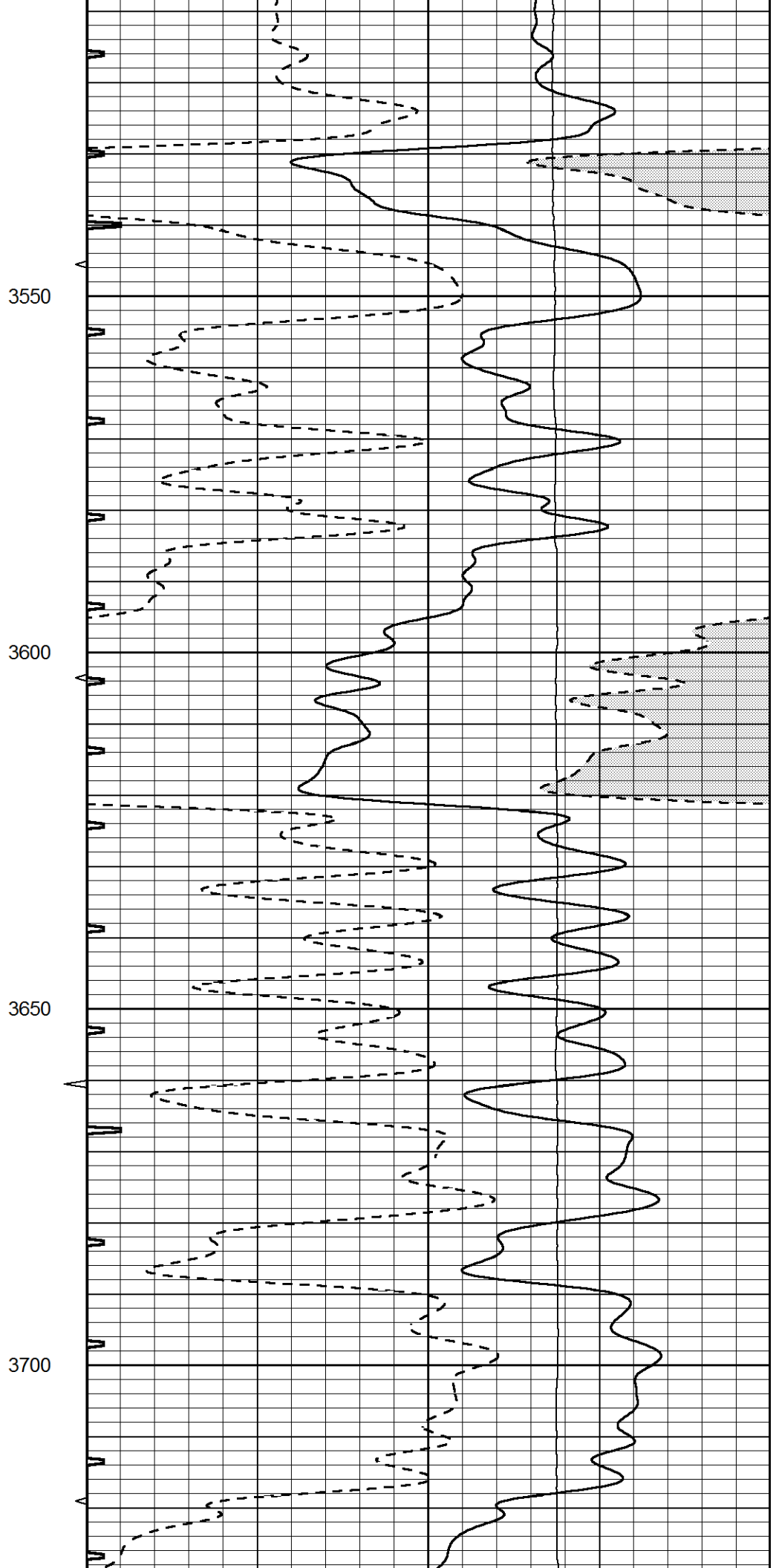
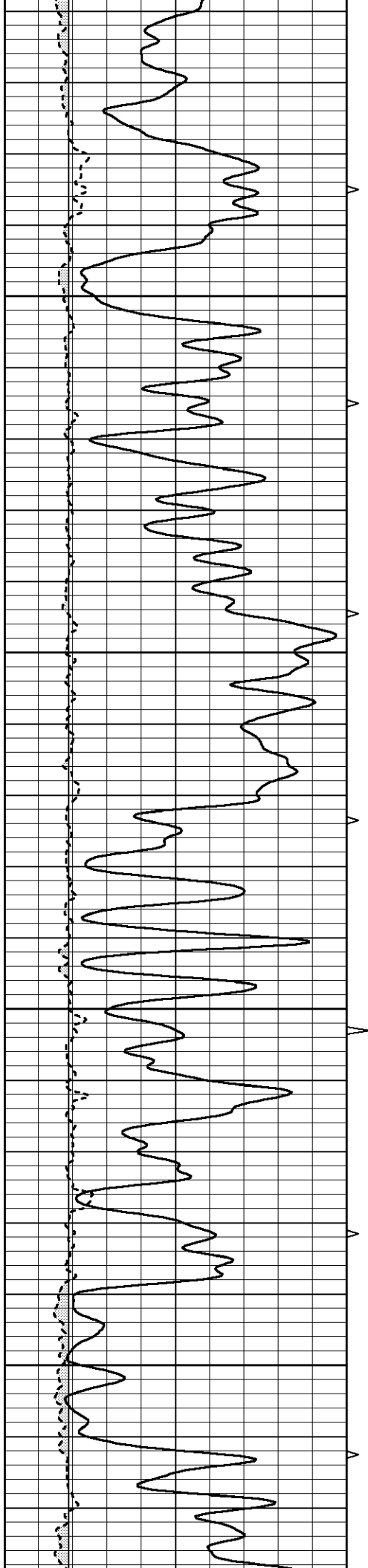
3350

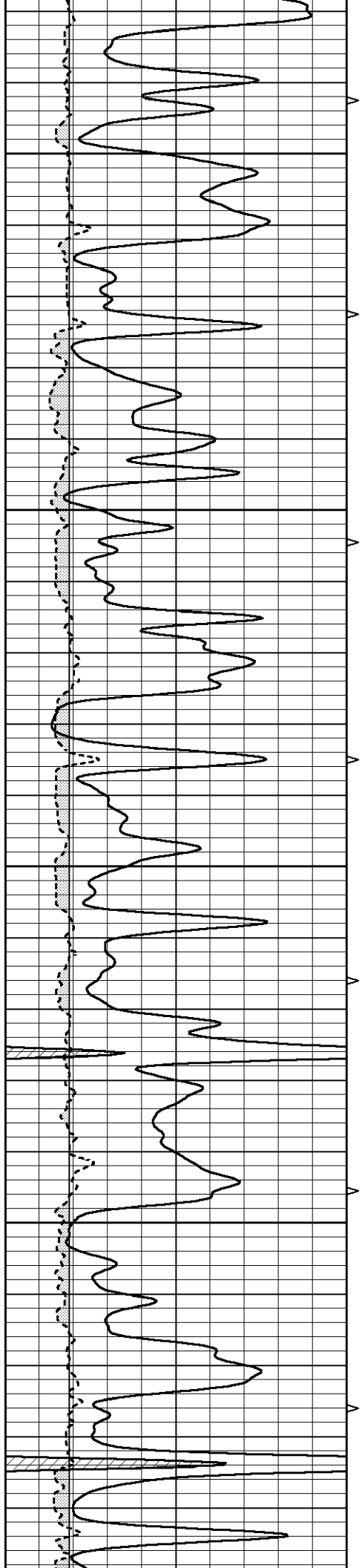
3400

3450

3500





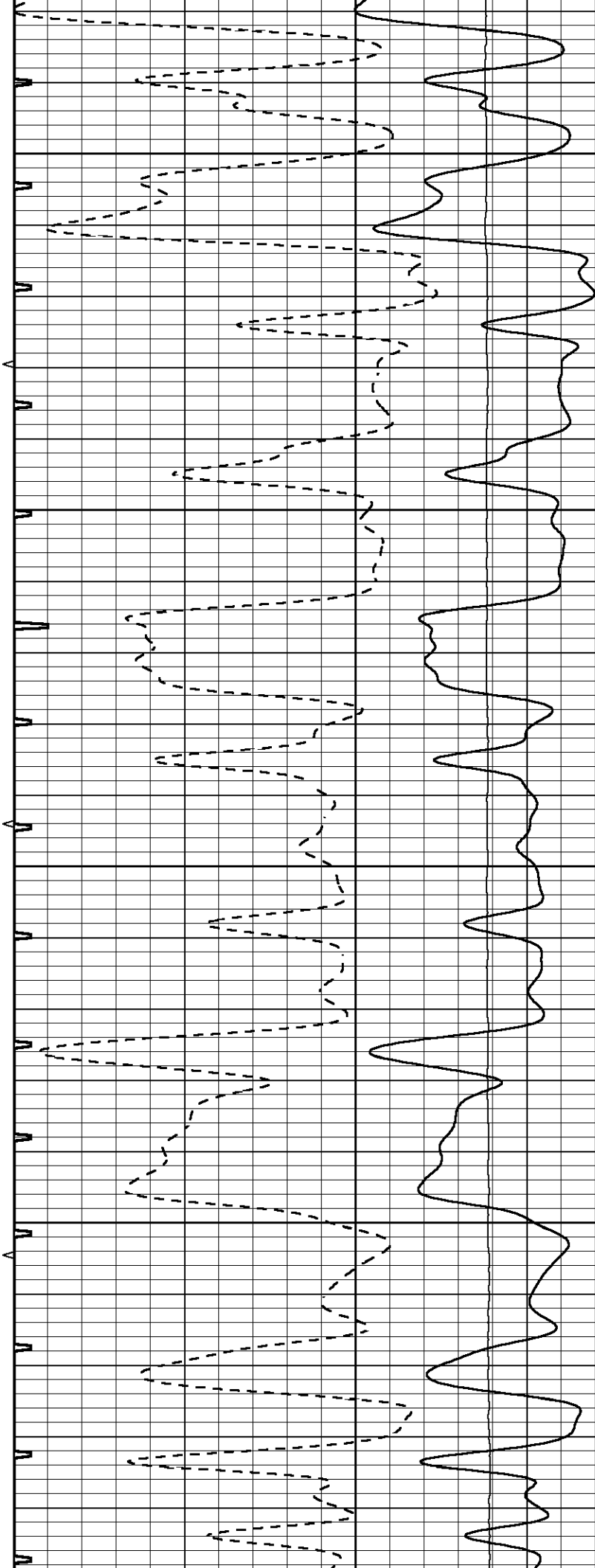


3750

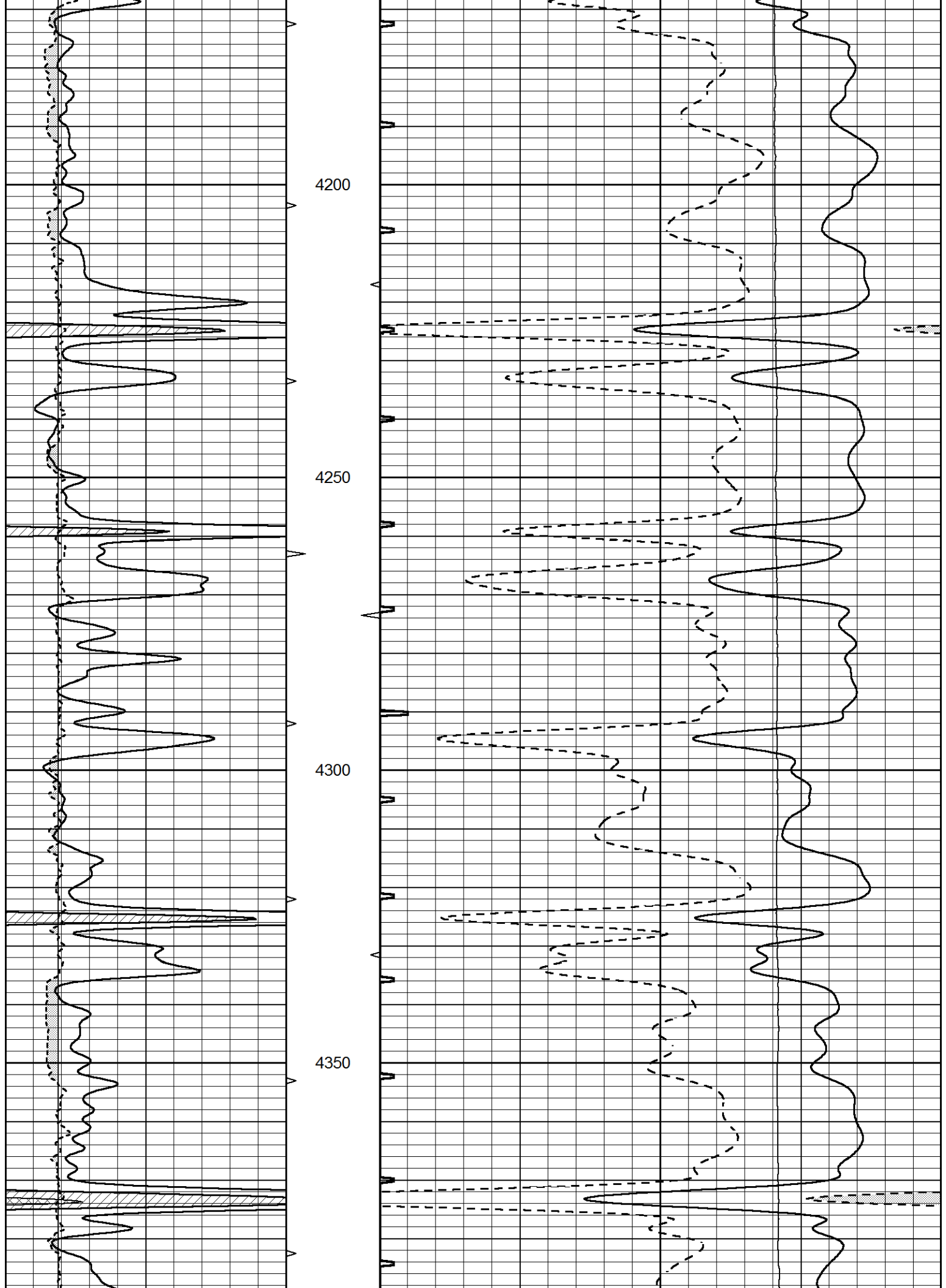
3800

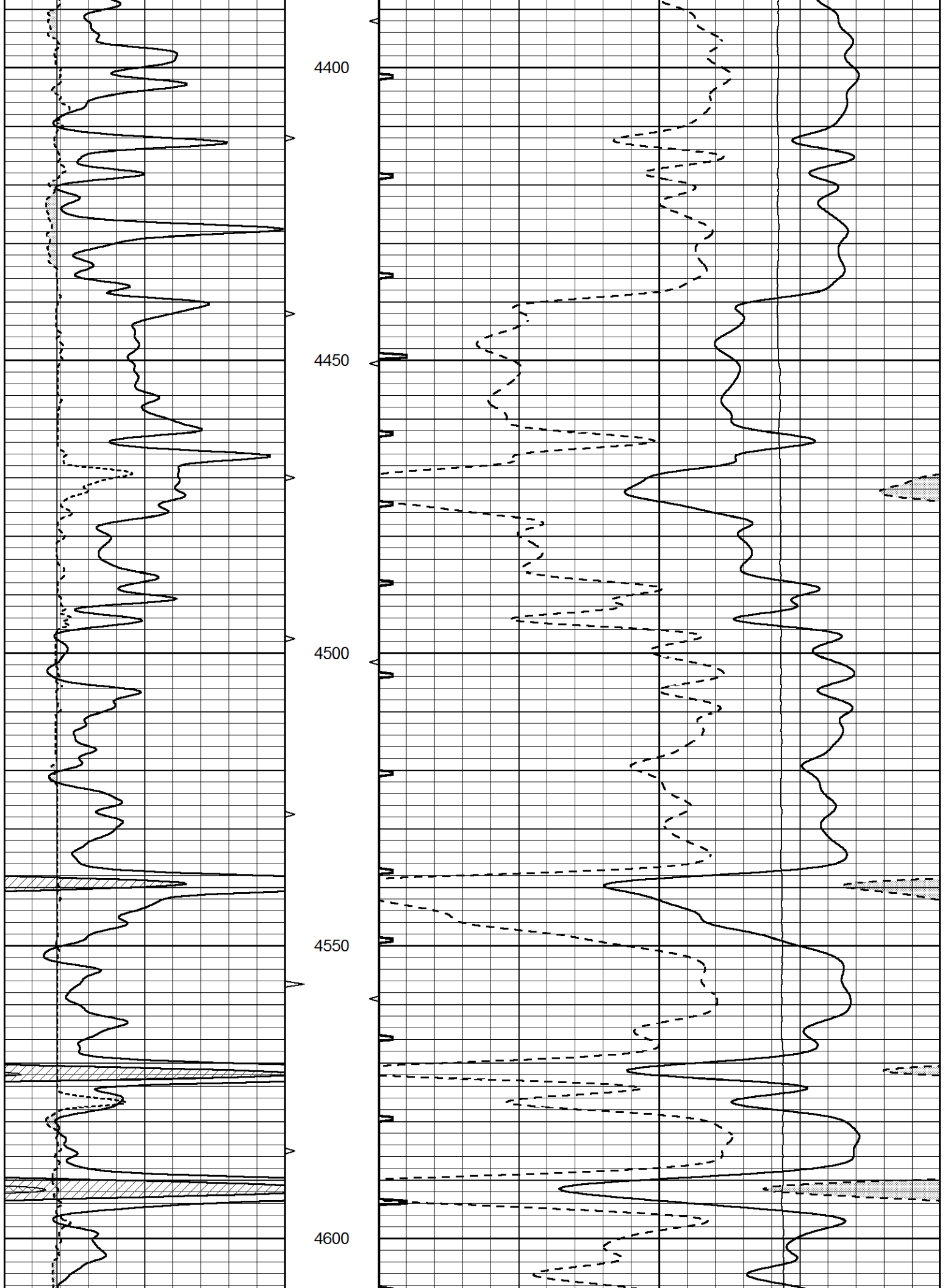
3850

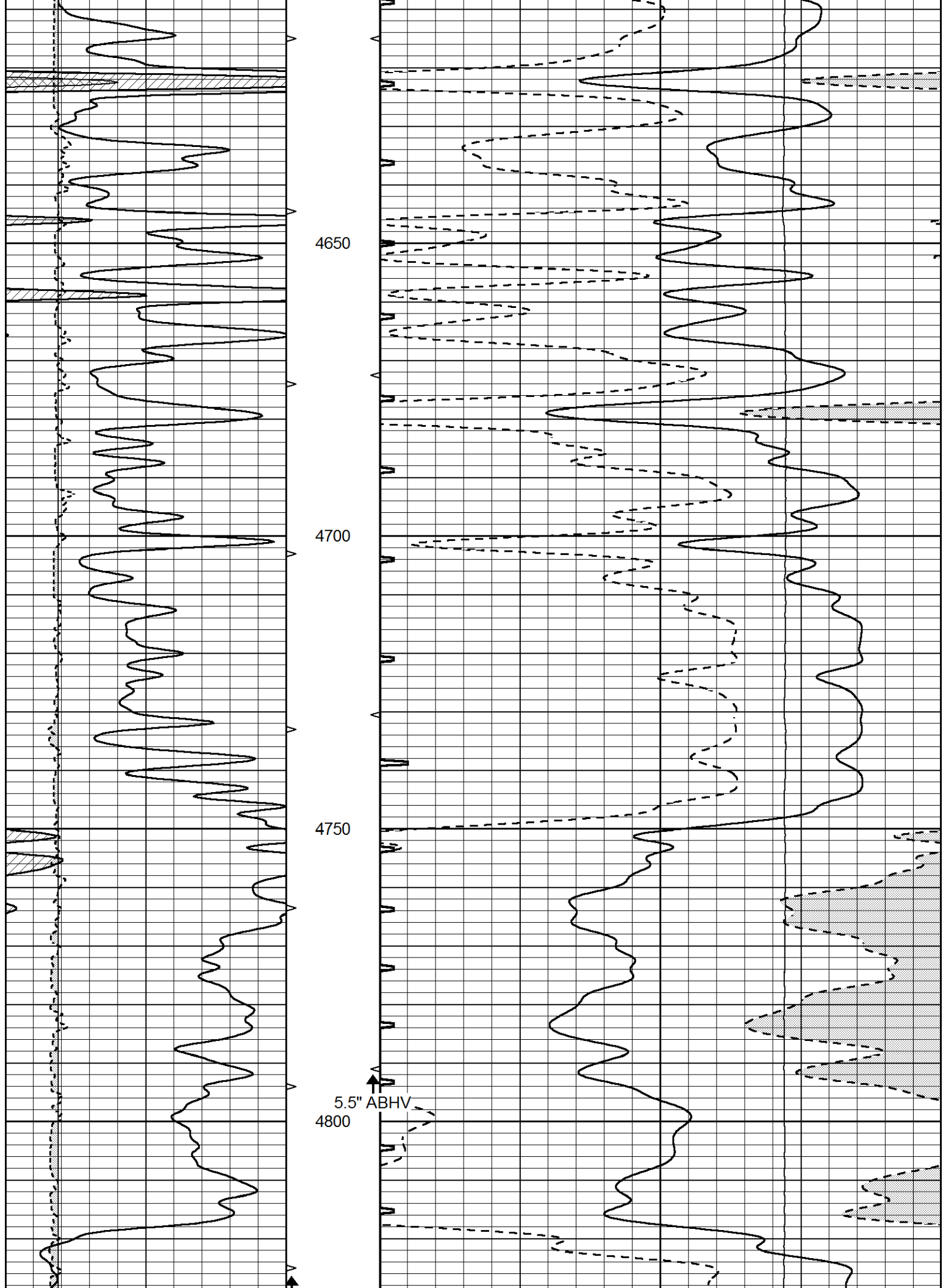
3900

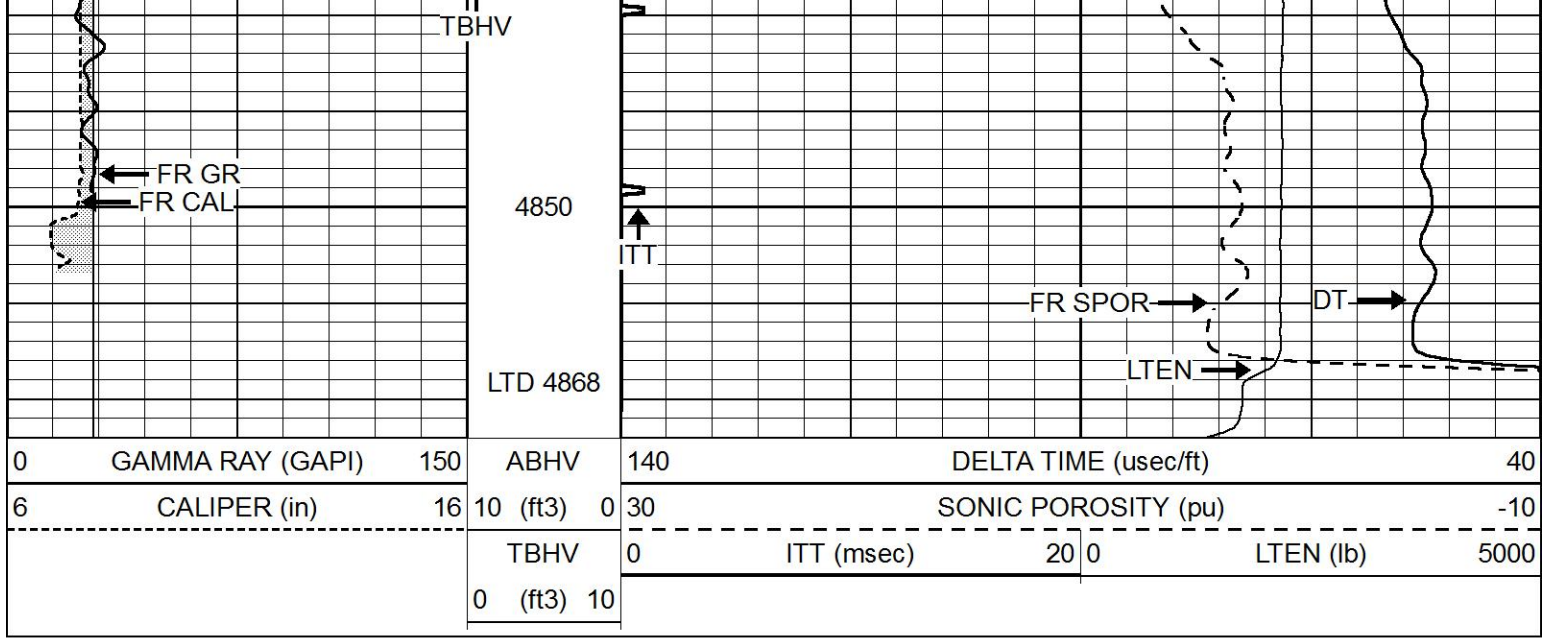












REPEAT SECTION

Database File 8792pe.db
 Dataset Pathname pass5R
 Presentation Format _slt
 Dataset Creation Fri Jun 28 18:36:08 2024
 Charted by Depth in Feet scaled 1:240

0	GAMMA RAY (GAPI)	150	ABHV	140	DELTA TIME (usec/ft)	40	
6	CALIPER (in)	16	10 (ft3)	0 30	SONIC POROSITY (pu)	-10	
			TBHV	0	ITT (msec)	20 0	
			0 (ft3)	10		LTEN (lb)	5000

