



**COMPENSATED  
DENSITY/NEUTRON  
PE LOG**

Company ARCADIAN RESOURCES, LLC.  
Well UNRUH #1  
Field UNNAMED  
County SCOTT State KANSAS

Location: API #: 15-171-21322-0000  
1095 FSL & 2145 FEL  
NE - NW - SW - SE  
SEC 19 TWP 16S RGE 34W  
Permanent Datum GROUND LEVEL Elevation 3163  
Log Measured From KELLY BUSHING 7' A.G.L  
Drilling Measured From KELLY BUSHING  
Other Services  
DILMEL  
SONIC  
Elevation  
K.B. 3170  
D.F. 3168  
G.L. 3163

Date	6/28/24
Run Number	ONE
Depth Driller	4869
Depth Logger	4868
Bottom Logged Interval	4844
Top Log Interval	3850
Casing Driller	8 625 @ 250
Casing Logger	250
Bit Size	7.875
Type Fluid in Hole	CHEMICAL MUD
Density / Viscosity	9.2/61
pH / Fluid Loss	9.54/9.2
Source of Sample	FLOWLINE
Rm @ Meas. Temp	.650 @ 82F
Rmf @ Meas. Temp	.488 @ 82F
Rmc @ Meas. Temp	.780 @ 82F
Source of Rmf / Rmc	MEASUREMENT
Rm @ BHT	.430 @ 124F
Time Circulation Stopped	2 HOURS
Time Logger on Bottom	4:15 P.M.
Maximum Recorded Temperature	124F
Equipment Number	3802
Location	HAYS, KANSAS
Recorded By	COLE ROBBEN
Witnessed By	SEAN DEENIHAN

<<< Fold Here >>>

All interpretations are opinions based on inferences from electrical or other measurements and we cannot and do not guarantee the accuracy or correctness of any interpretation, and we shall not, except in the case of gross or willful negligence on our part, be liable or responsible for any loss, costs, damages, or expenses incurred or sustained by anyone resulting from any interpretation made by any of our officers, agents or employees. These interpretations are also subject to our general terms and conditions set out in our current Price Schedule.

**Comments**

THANK YOU FOR USING ELI WIRELINE SERVICES, HAYS, KS. ( 785 ) 628-6395

**DIRECTIONS:**

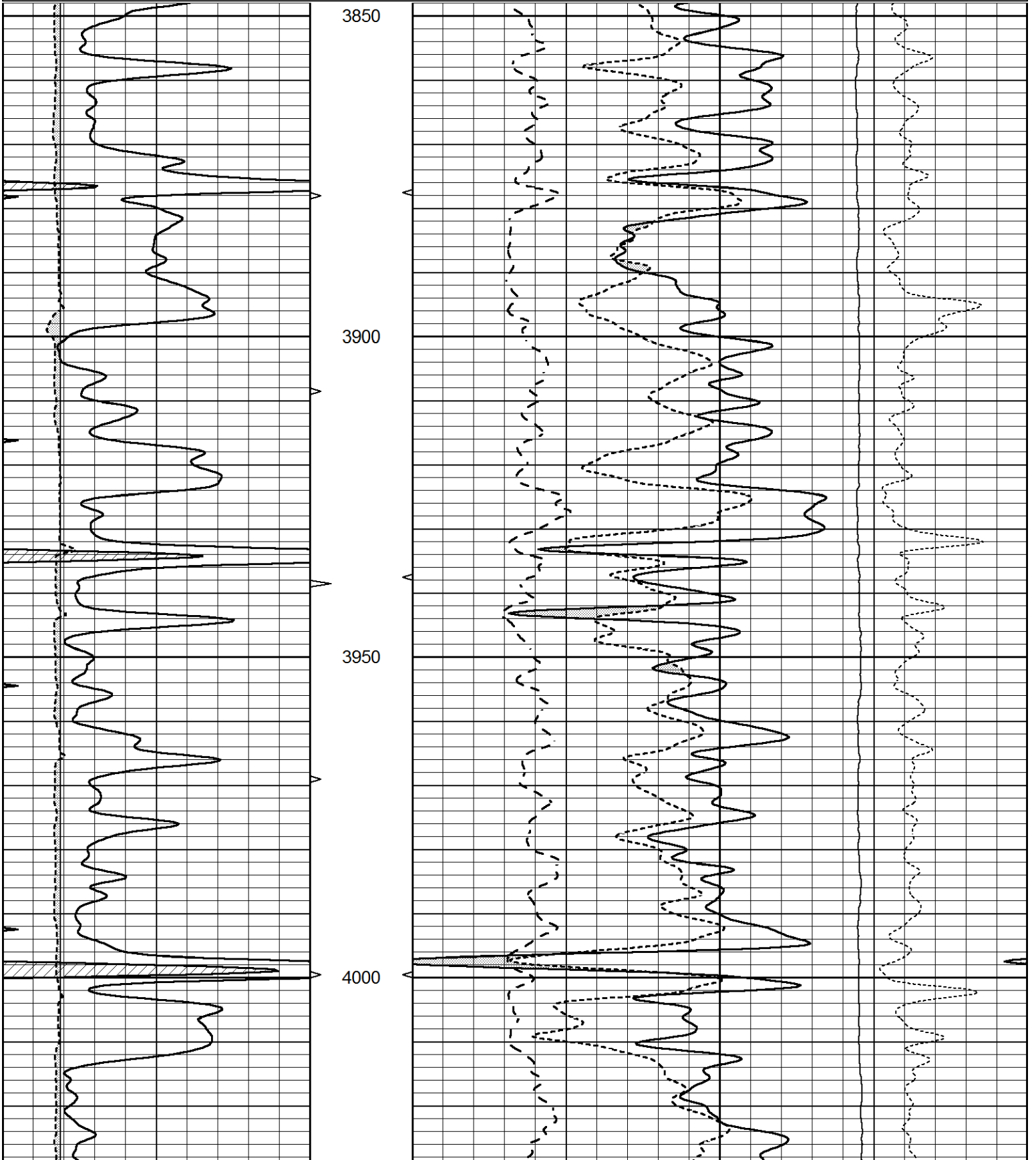
FROM PENCE, KANSAS GO WEST 2 MILES ON 270 ROAD, SOUTH 3/4 MILES ON APACHE ROAD, WEST INTO

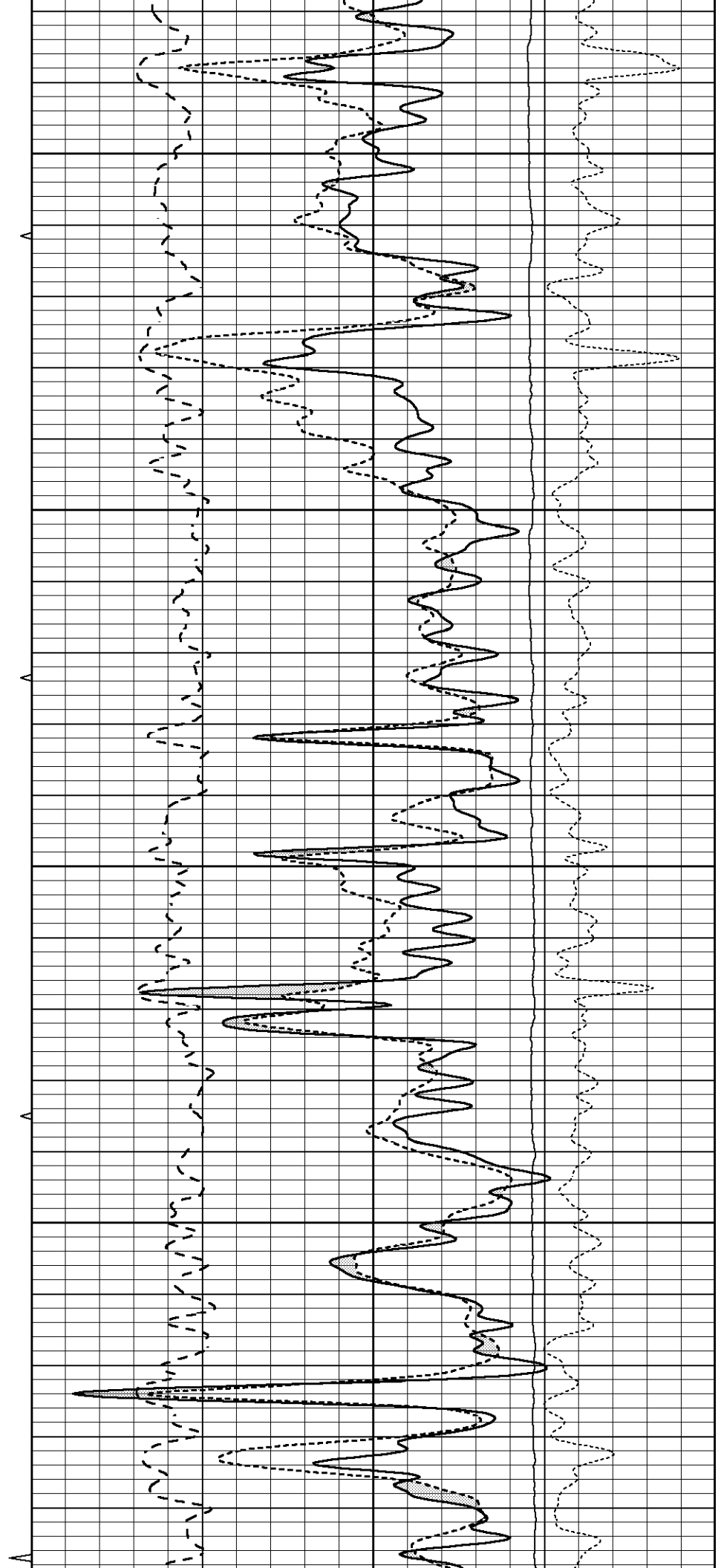
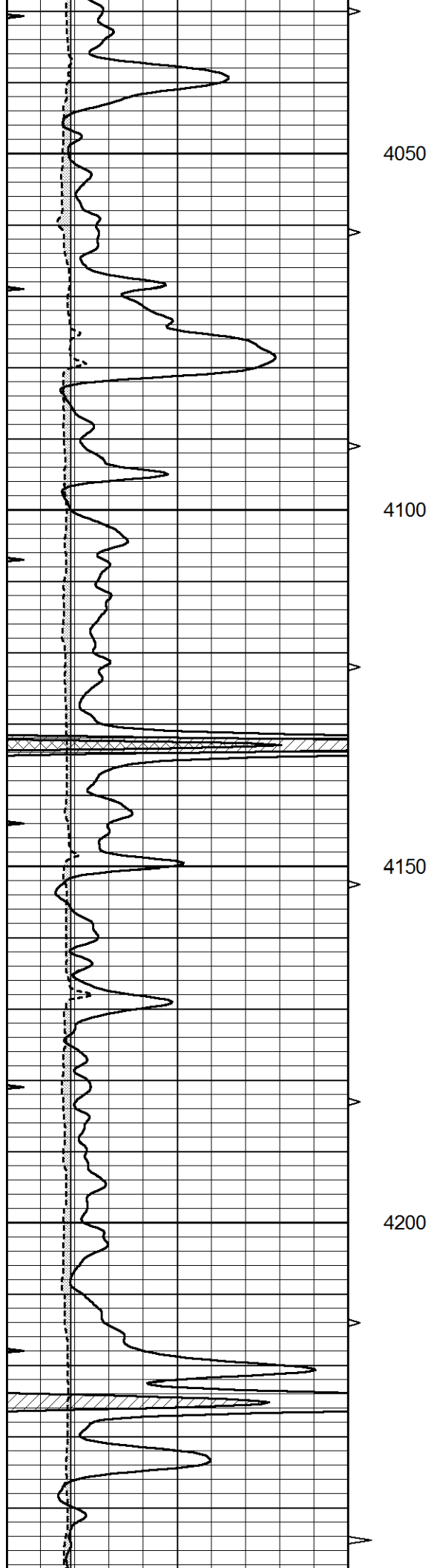


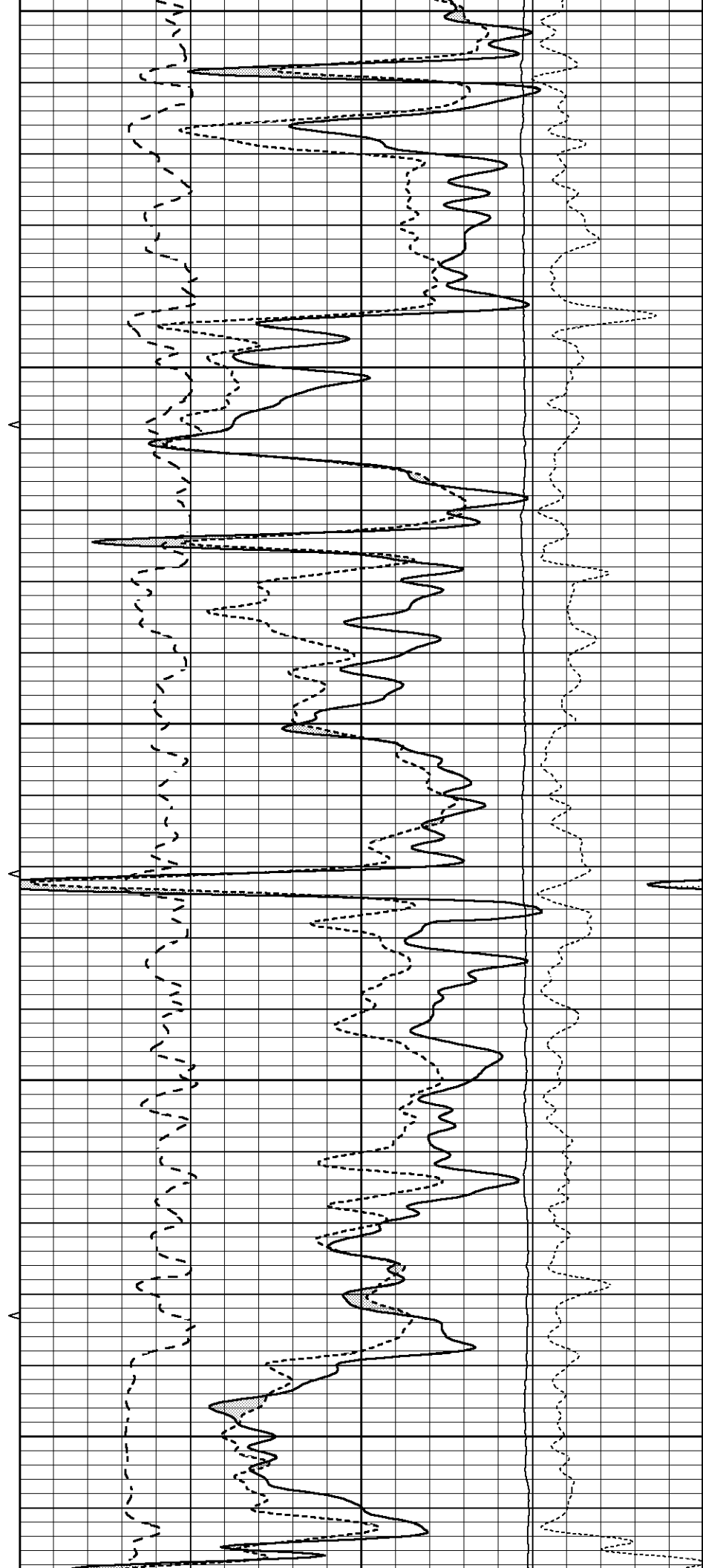
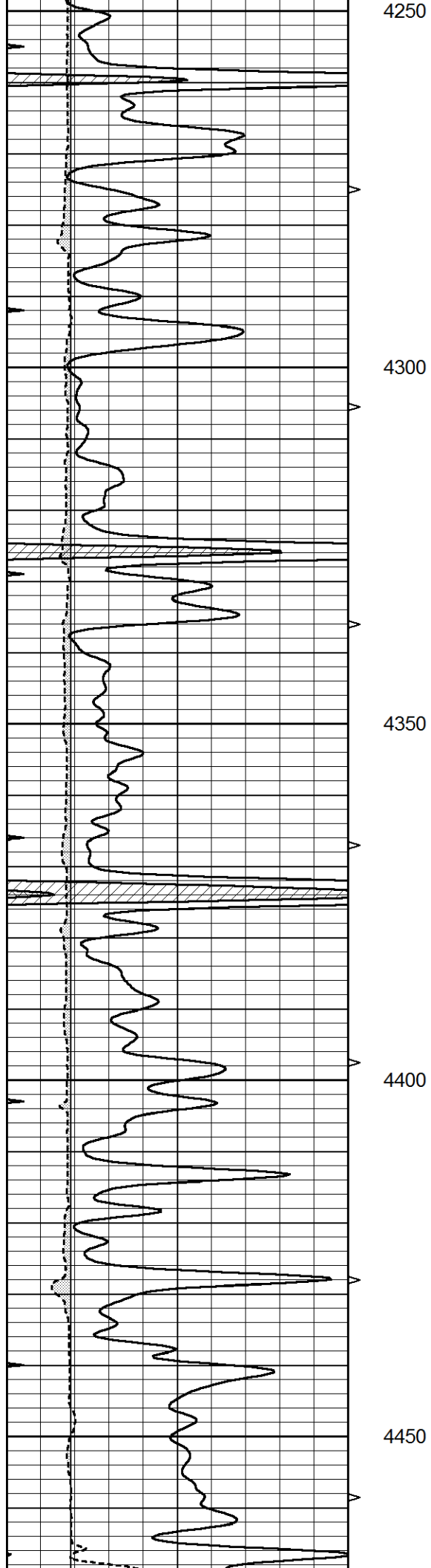
**MAIN SECTION**

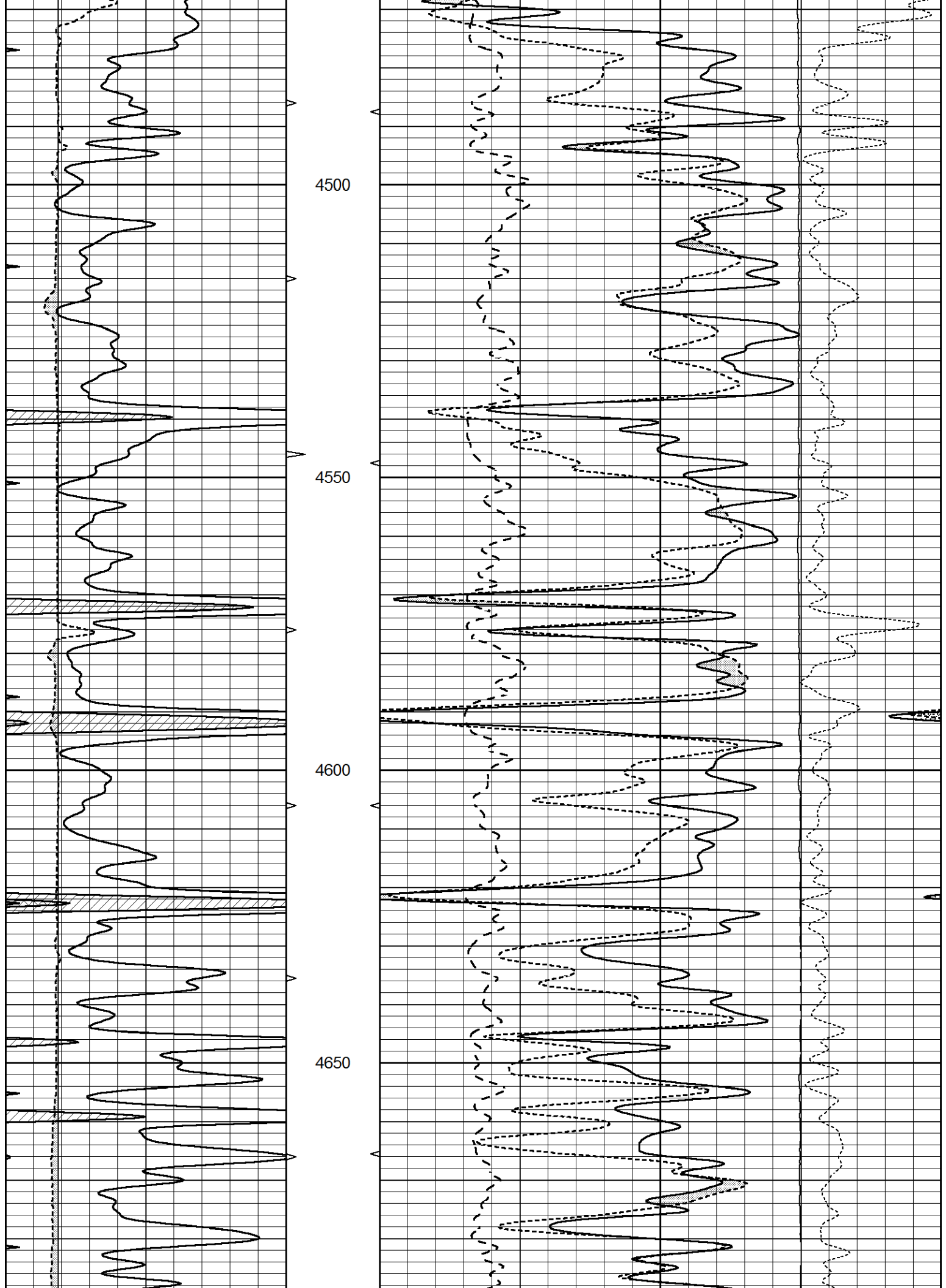
Database File 8792pe.db  
 Dataset Pathname pass3D  
 Presentation Format \_ldt\_neu  
 Dataset Creation Fri Jun 28 17:13:51 2024  
 Charted by Depth in Feet scaled 1:240

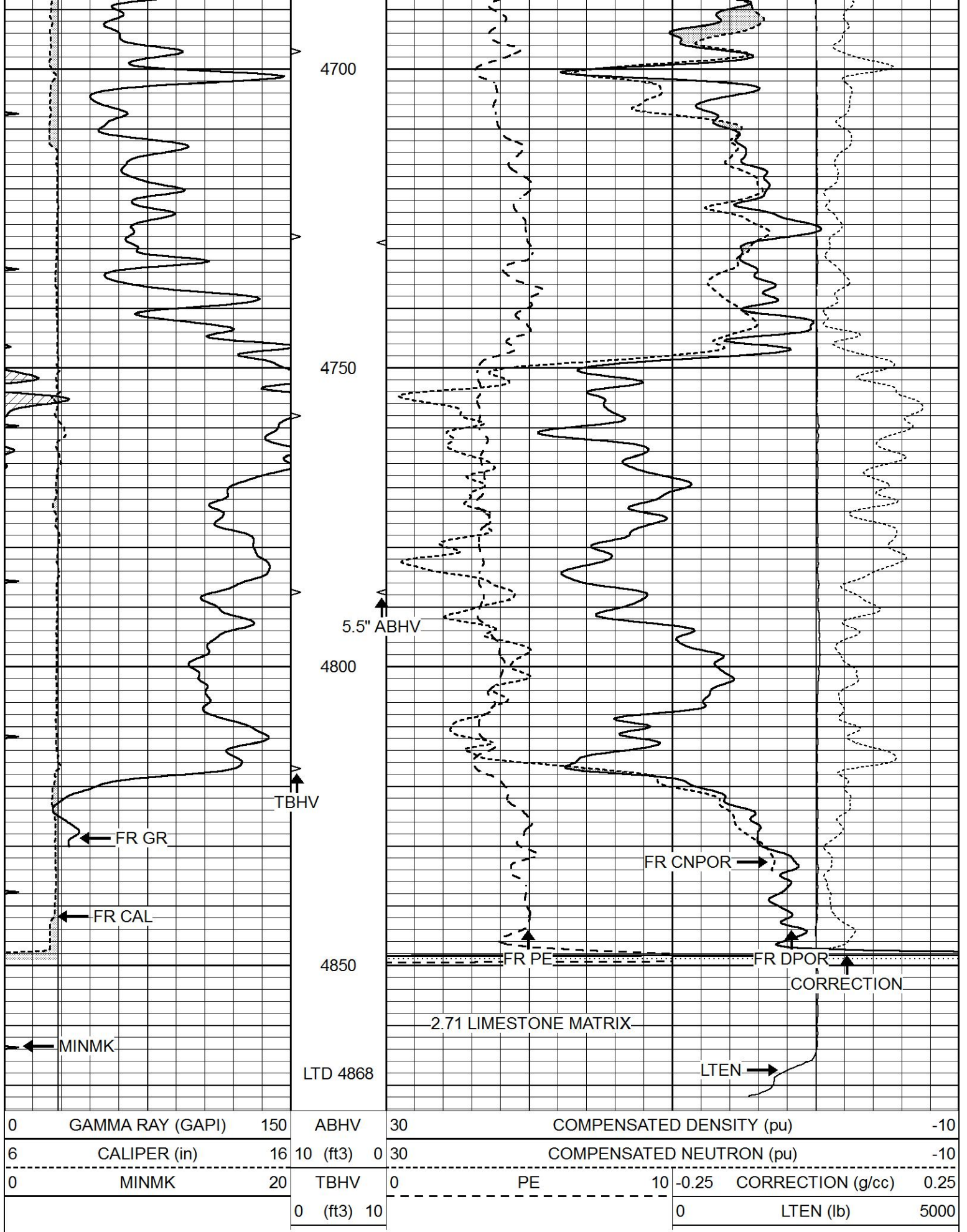
0	GAMMA RAY (GAPI)	150	ABHV	30	COMPENSATED DENSITY (pu)			-10	
6	CALIPER (in)	16	10 (ft3)	0	COMPENSATED NEUTRON (pu)			-10	
0	MINMK	20	TBHV	0	PE	10	-0.25	CORRECTION (g/cc)	0.25
			0 (ft3)	10			0	LTEN (lb)	5000











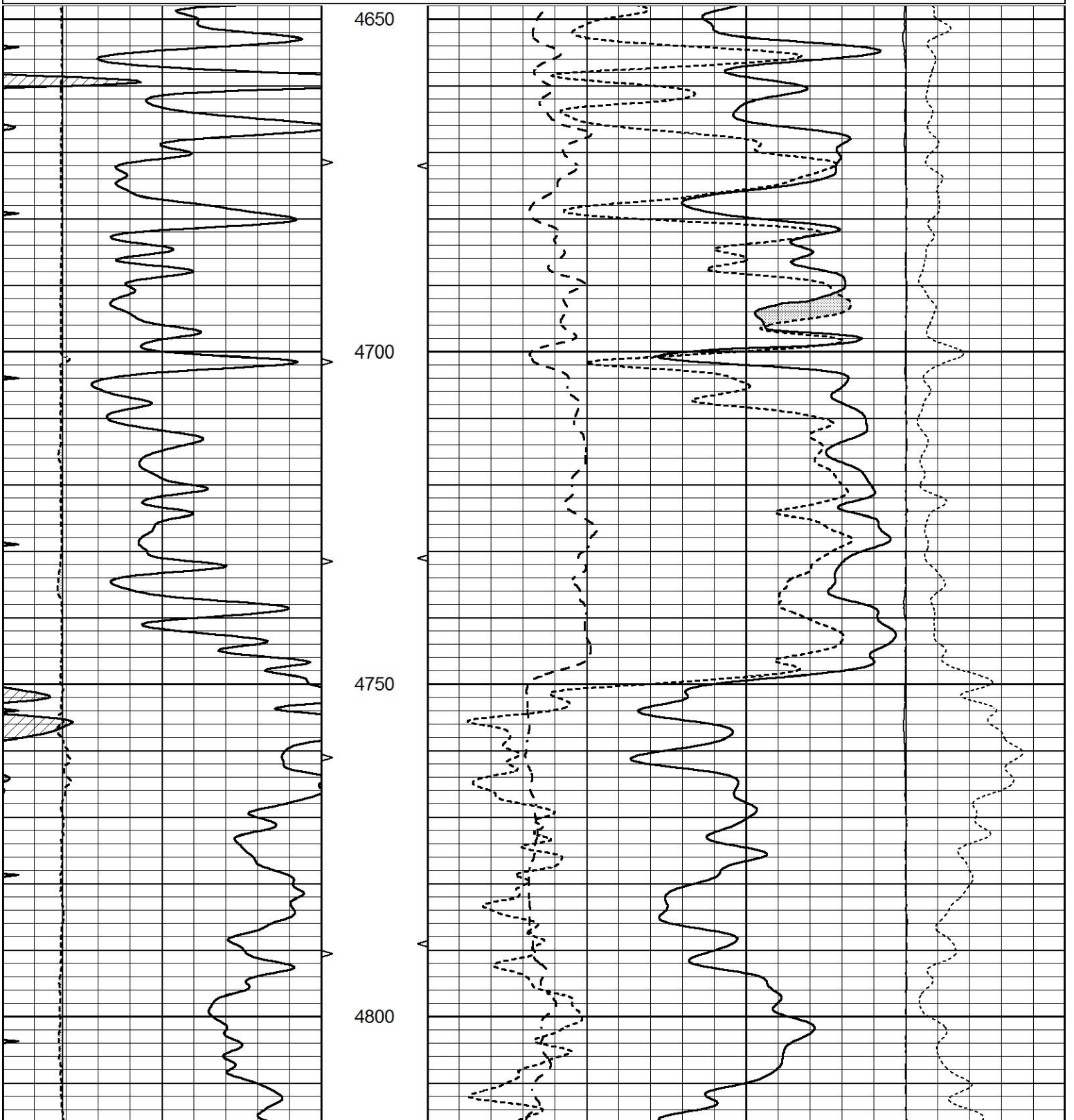
REPEAT SECTION

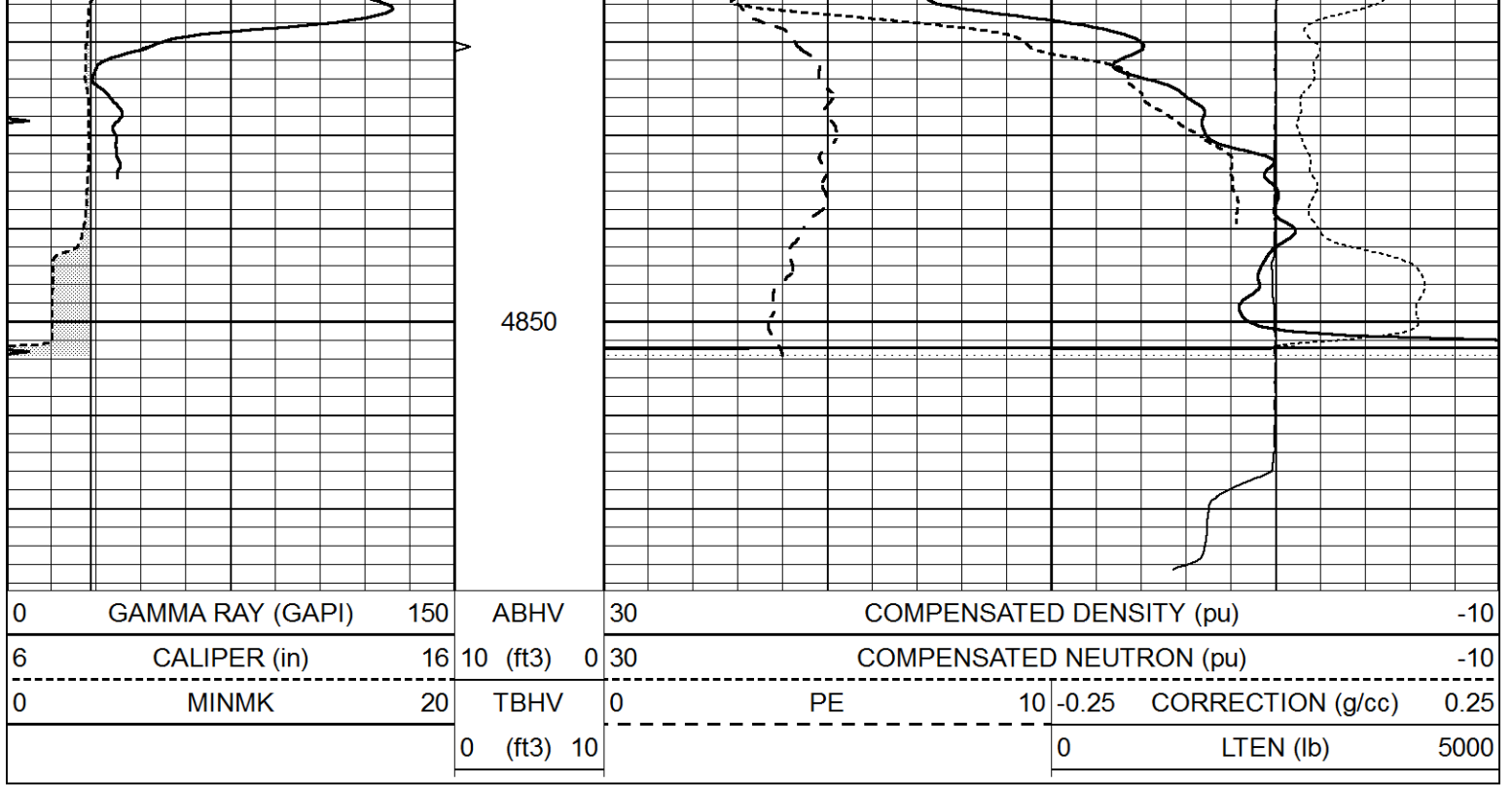
# REPEAT SECTION



Database File 8792pe.db  
 Dataset Pathname pass2R  
 Presentation Format \_ldt\_neu  
 Dataset Creation Fri Jun 28 17:38:26 2024  
 Charted by Depth in Feet scaled 1:240

0	GAMMA RAY (GAPI)	150	ABHV	30	COMPENSATED DENSITY (pu)				-10	
6	CALIPER (in)	16	10 (ft3)	0	30	COMPENSATED NEUTRON (pu)				-10
0	MINMK	20	TBHV	0	PE	10	-0.25	CORRECTION (g/cc)	0.25	
			0 (ft3)	10			0	LTEN (lb)	5000	





### Calibration Report

Database File 8792pe.db  
 Dataset Pathname pass3D  
 Dataset Creation Fri Jun 28 17:13:51 2024

### Dual Induction Calibration Report

Serial-Model: FW1410-56-Probe  
 Surface Cal Performed: Tue Apr 30 11:10:17 2024  
 Downhole Cal Performed: Tue Jul 25 12:15:37 2017  
 After Survey Verification Performed: Tue Jul 25 12:15:38 2017

#### Surface Calibration

Loop:	Readings			References			Results	
	Air	Loop		Air	Loop		m	b
Deep	0.008	0.765	V	1.000	400.000	mmho/m	520.000	19.000
Medium	-0.056	0.761	V	1.000	464.000	mmho/m	540.000	189.000
Internal:	Zero	Cal		Zero	Cal		m	b
Deep	0.005	0.624	V	0.000	400.000	mmho/m	645.611	-3.034
Medium	0.012	0.721	V	0.000	464.000	mmho/m	653.591	-7.532

#### Downhole Calibration

	Readings			References			Results	
	Zero	Cal		Zero	Cal		m'	b'
Deep	-0.647	301.329	mmho/m	-0.780	336.378	mmho/m	1.117	-0.058
Medium	38.256	411.013	mmho/m	39.046	441.706	mmho/m	1.080	-2.280
LL3		7.471	V		2500.000	Ohm-m		
		0.001	V		20.000	Ohm-m		
		-7.085	V		4000.000	mmho-m		

#### After Survey Verification

	Readings			Targets			Results	
	Zero	Cal		Zero	Cal		m'	b'

Deep	0.000	0.000	mmho/m	-0.647	301.329	mmho/m	1.000	0.000
Medium	0.000	0.000	mmho/m	38.256	411.013	mmho/m	1.000	0.000
LL3		0.000	Ohm-m		1500.000	Ohm-m		
		0.000	Ohm-m		20.000	Ohm-m		
		0.000	mmho-m		3745.000	mmho-m		

Litho Density Calibration Report  
Serial: 002 Model: PRB

Master Calibration

Performed Tue Mar 05 14:38:26 2014

	Background	Magnesium	Aluminum	Aluminum+Fe	
Window 1	725.2	6706.7	2064.1	1781.5	cps
Window 2	662.7	5683.9	1787.4	1577.3	cps
Window 3	531.1	2851.1	1038.7	963.2	cps
Window 4	159.2	158.7	158.9	156.4	cps
Long Space	0.0	5021.2	1124.6	914.6	cps
Short Space	1.4	1196.9	818.3	680.9	cps
Rho		1.7100	2.5900	0.0000	g/cc
Pe		2.0000	2.7500	5.7900	
Rib Angle	: 45.7	Rib Slope	: 1.026	Density/Spine Ratio	: 0.570
Spine Angle	: 75.7	Spine Slope	: 3.935	Spine Intercept	: -19.4

Before Survey Verification

Performed Wed Dec 31 18:00:00 1969

Window 1	0.0	0.0	0.0	0.0	cps
Window 2	0.0	0.0	0.0	0.0	cps
Window 3	0.0	0.0	0.0	0.0	cps
Window 4	0.0	0.0	0.0	0.0	cps
Long Space	0.0	0.0	0.0	0.0	cps
Short Space	0.0	0.0	0.0	0.0	cps
Measured Rho		0.0000	0.0000	0.0000	g/cc
Measured Correction		0.0000	0.0000	0.0000	g/cc
Measured Pe			0.0000	0.0000	

After Survey Verification

Performed Wed Dec 31 18:00:00 1969

Window 1	0.0	0.0	0.0	0.0	cps
Window 2	0.0	0.0	0.0	0.0	cps
Window 3	0.0	0.0	0.0	0.0	cps
Window 4	0.0	0.0	0.0	0.0	cps
Long Space	0.0	0.0	0.0	0.0	cps
Short Space	0.0	0.0	0.0	0.0	cps
Measured Rho		0.0000	0.0000	0.0000	g/cc
Measured Correction		0.0000	0.0000	0.0000	g/cc
Measured Pe			0.0000	0.0000	

Compensated Neutron Calibration Report

Serial Number: 080621PMC  
Tool Model: NABORS

PRE-SURVEY VERIFICATION

Detector	Readings	Measured	Target
Short Space	cps		
Long Space	cps	pu	pu

POST-SURVEY VERIFICATION

Detector	Readings	Measured	Target
Short Space	cps		
Long Space	cps	pu	pu

Gamma Ray Calibration Report

Serial Number:	46001	
Tool Model:	Probe1	
Performed:	Thu Apr 20 09:55:57 2023	
Calibrator Value:	1.0	GAPI
Background Reading:	0.0	cps
Calibrator Reading:	1.0	cps
Sensitivity:	0.4300	GAPI/cps