

MICRO LOG



Company ARCADIAN RESOURCES, LLC.
 Well UNRUH #1
 Field UNNAMED
 County SCOTT State KANSAS

Location: API #: 15-171-21322-0000
 1095 FSL & 2145 FEL
 NE - NW - SW - SE
 SEC 19 TWP 16S RGE 34W
 Permanent Datum GROUND LEVEL Elevation 3163
 Log Measured From KELLY BUSHING 7' A.G.L
 Drilling Measured From KELLY BUSHING
 Other Services
 CDL/CNL/PE
 DIL/SON
 Elevation
 K.B. 3170
 D.F. 3168
 G.L. 3163

Date	6/28/24	
Run Number	TWO	
Depth Driller	4869	
Depth Logger	4868	
Bottom Logged Interval	4852	
Top Log Interval	3850	
Casing Driller	8.625 @ 250	
Casing Logger	250	
Bit Size	7.875	
Type Fluid in Hole	CHEMICAL MUD	CHLORIDES 6,000 PPM
Density / Viscosity	9.2/61	
pH / Fluid Loss	9.54/9.2	
Source of Sample	FLOWLINE	
Rm @ Meas. Temp	.650 @ 82F	
Rmf @ Meas. Temp	.488 @ 82F	
Rmc @ Meas. Temp	.780 @ 82F	
Source of Rmf / Rmc	MEASUREMENT	
Rm @ BHT	.430 @ 124F	
Time Circulation Stopped	4 HOURS	
Time Logger on Bottom	6:15 P.M.	
Maximum Recorded Temperature	124F	
Equipment Number	3802	
Location	HAYS, KANSAS	
Recorded By	COLE ROBBEN	
Witnessed By	SEAN DEENIHAN	

<<< Fold Here >>>

All interpretations are opinions based on inferences from electrical or other measurements and we cannot and do not guarantee the accuracy or correctness of any interpretation, and we shall not, except in the case of gross or willful negligence on our part, be liable or responsible for any loss, costs, damages, or expenses incurred or sustained by anyone resulting from any interpretation made by any of our officers, agents or employees. These interpretations are also subject to our general terms and conditions set out in our current Price Schedule.

Comments

THANK YOU FOR USING ELI WIRELINE SERVICES, HAYS, KS. (785) 628-6395

DIRECTIONS:

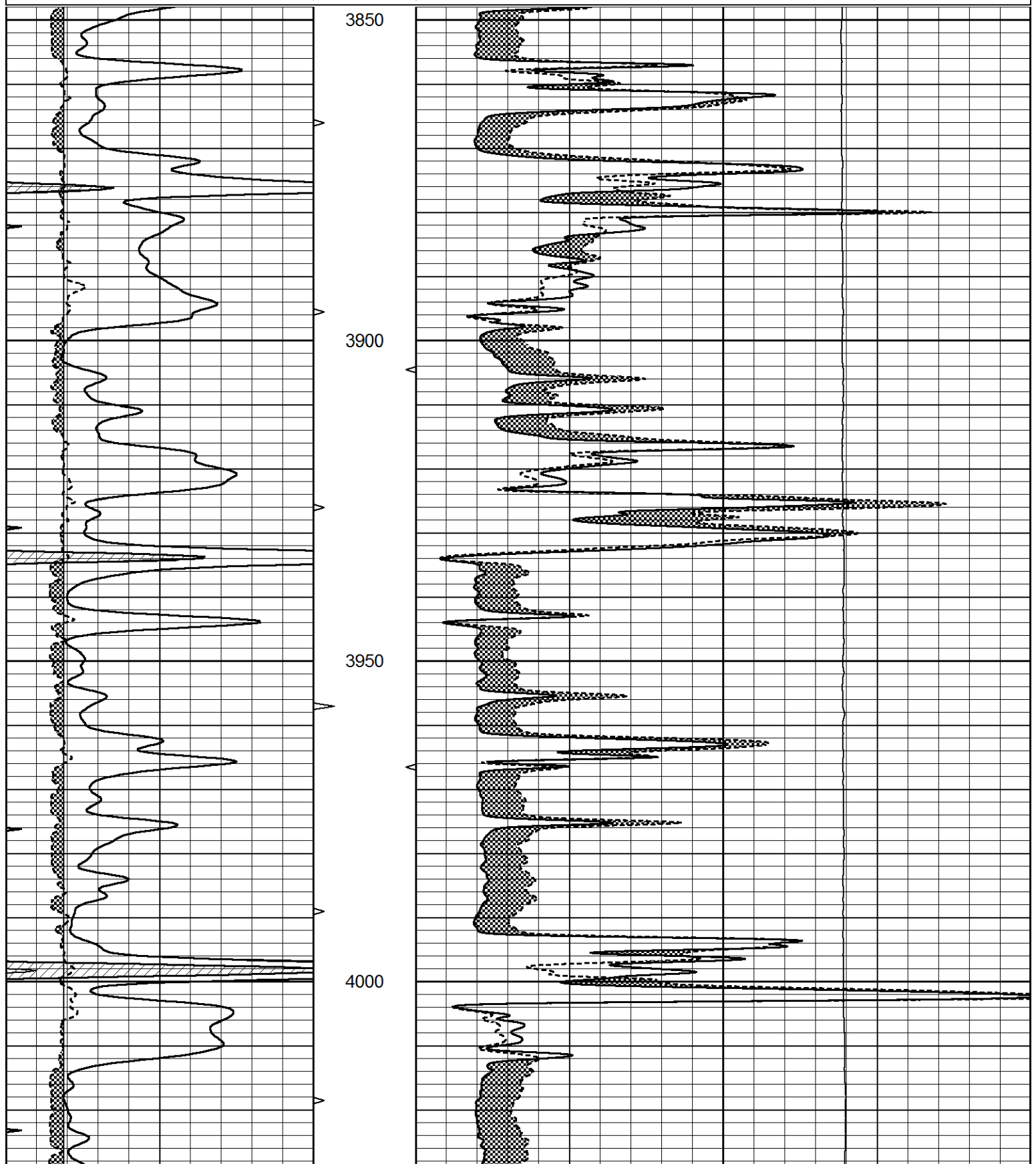
FROM PENCE, KANSAS GO WEST 2 MILES ON 270 ROAD, SOUTH 3/4 MILES ON APACHE ROAD, WEST INTO

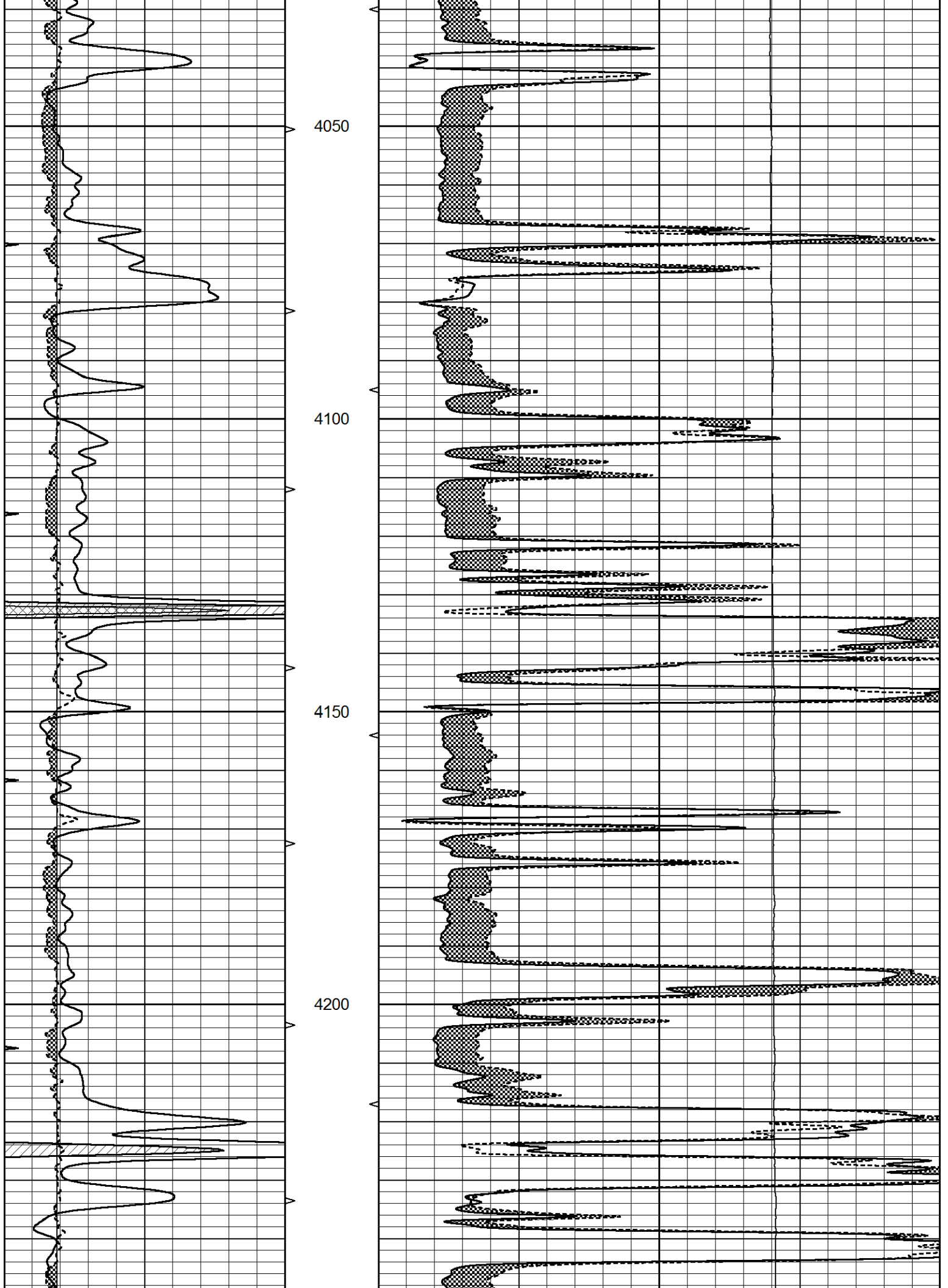


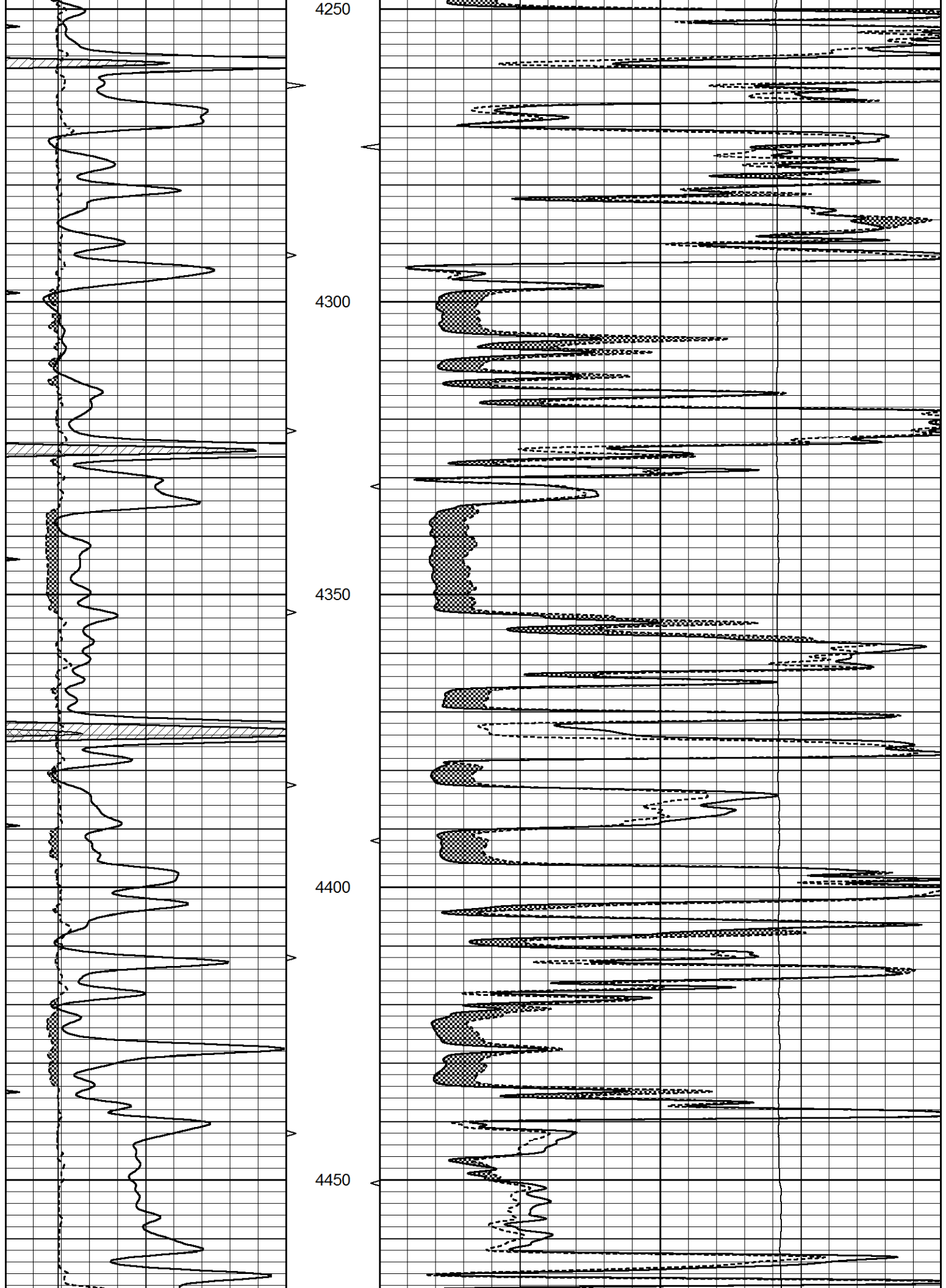
MAIN SECTION

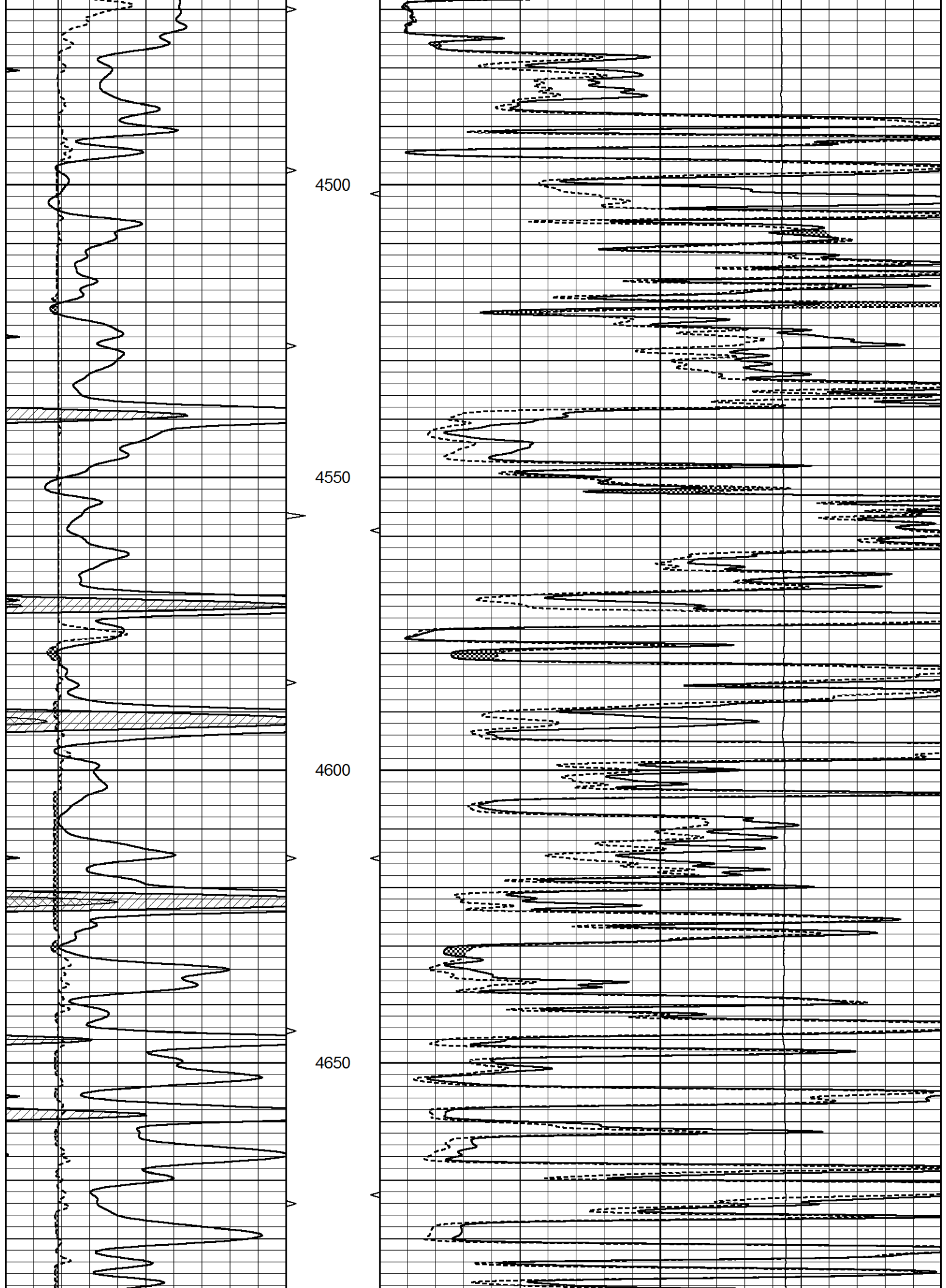
Database File 8792pe.db
 Dataset Pathname pass6DT
 Presentation Format _micro
 Dataset Creation Fri Jun 28 18:52:56 2024
 Charted by Depth in Feet scaled 1:240

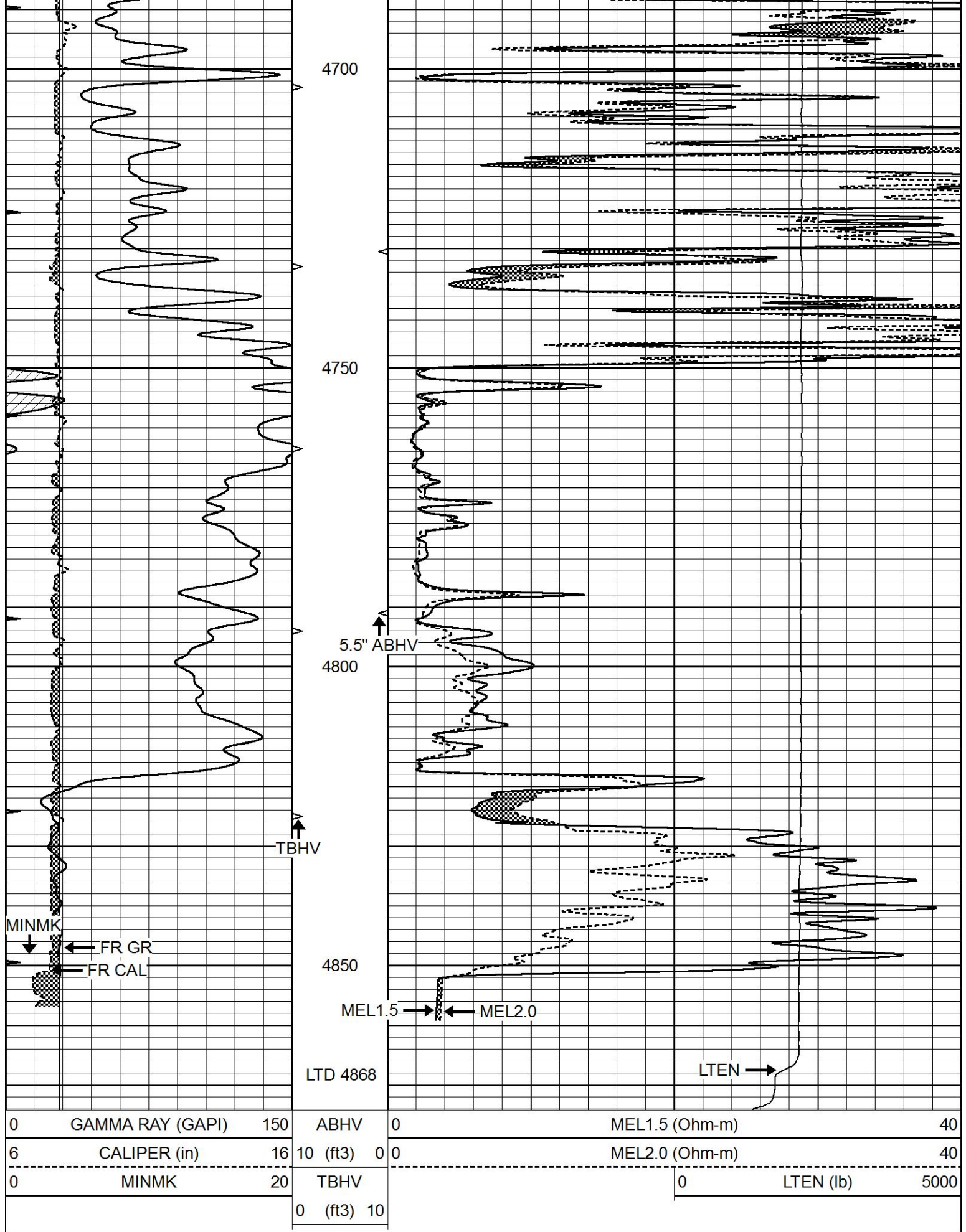
0	GAMMA RAY (GAPI)	150	ABHV	0	MEL1.5 (Ohm-m)	40
6	CALIPER (in)	16	10 (ft3)	0	MEL2.0 (Ohm-m)	40
0	MINMK	20	TBHV	0	LTEN (lb)	5000
			0 (ft3)	10		











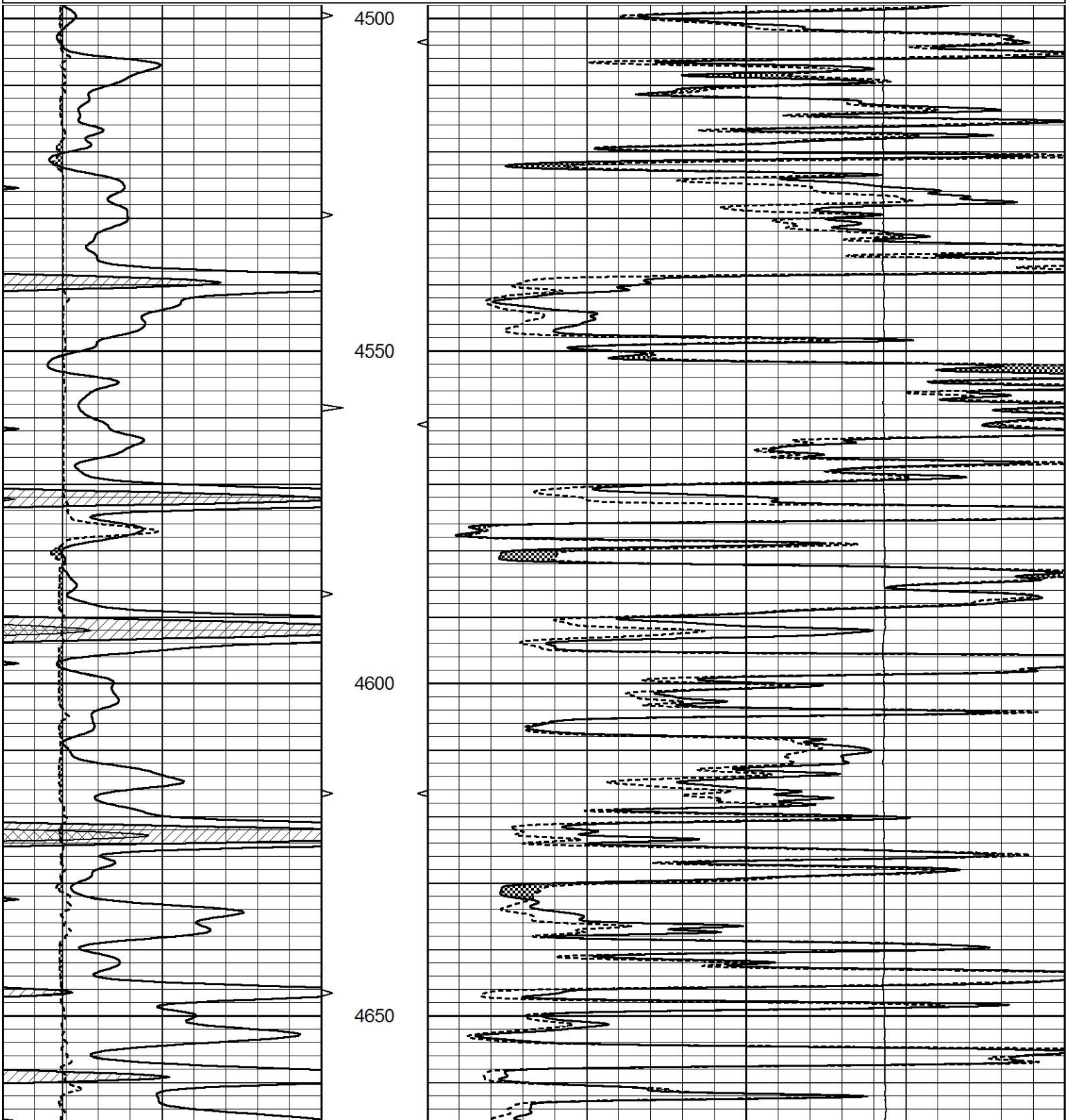
REPEAT SECTION

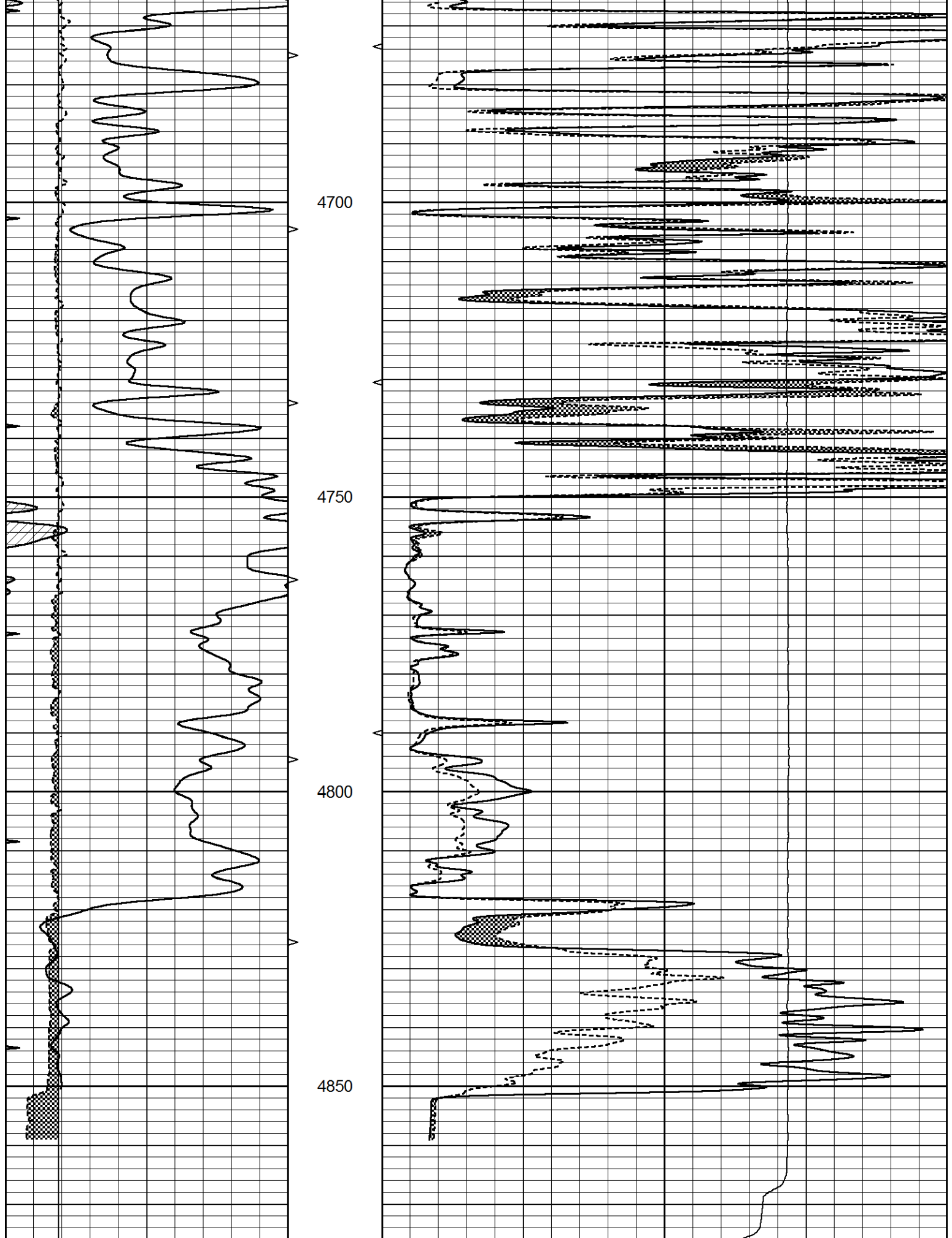
REPEAT SECTION



Database File 8792pe.db
 Dataset Pathname pass5R
 Presentation Format _micro
 Dataset Creation Fri Jun 28 18:36:08 2024
 Charted by Depth in Feet scaled 1:240

0	GAMMA RAY (GAPI)	150	ABHV	0	MEL1.5 (Ohm-m)	40	
6	CALIPER (in)	16	10 (ft3)	0 0	MEL2.0 (Ohm-m)	40	
0	MINMK	20	TBHV		0	LTEN (lb)	5000
			0 (ft3)	10			





0	GAMMA RAY (GAPI)	150	ABHV	0	MEL1.5 (Ohm-m)	40
6	CALIPER (in)	16	10 (ft ³)	0 0	MEL2.0 (Ohm-m)	40

0	MINMK	20	TBHV	0	LTEN (lb)	5000
			0 (ft3) 10			

Calibration Report

Database File 8792pe.db
Dataset Pathname pass6DT
Dataset Creation Fri Jun 28 18:52:56 2024

MICRO_USR Calibration Report

Serial Number:	070911		
Tool Model:	ProbeL		
Performed:	Wed Jun 19 16:13:26 2024		
Caliper Calibration:	Gain=4.259	Offset=1.900	
	Low Cal	High Cal	
References	8.000	14.000	
Readings	1.427	2.836	
1.5" Calibration:	Gain=29.500	Offset=-0.079	
	Low Cal	High Cal	
References	0.000	20.000	
Readings	0.005	1.240	
2" Calibration:	Gain=48.000	Offset=-0.800	
	Low Cal	High Cal	
References	0.000	20.000	
Readings	0.004	1.075	

Microlog Calibration Report

Serial-Model: 070911-ProbeL
Performed: Sat May 14 04:48:25 2022

	Readings				References		Results	
	Zero	Cal			Zero	Cal	m	b
Normal	0.0002	0.4836	V	0.0000	10.0000	Ohm-m	20.6908	-0.0051
Inverse	0.0018	0.6297	V	0.0000	10.0000	Ohm-m	15.9263	-0.0282
Caliper	0.0000	1.0000	V	0.0000	1.0000	in	1.0000	0.0000

Gamma Ray Calibration Report

Serial Number:	070558		
Tool Model:	Probe1		
Performed:	Sat Sep 30 18:38:35 2023		
Calibrator Value:	1.0	GAPI	
Background Reading:	0.0	cps	
Calibrator Reading:	1.0	cps	
Sensitivity:	0.2700	GAPI/cps	