



# DUAL INDUCTION LOG

Company ARCADIAN RESOURCES, LLC.

Well UNRUH #1

Field UNNAMED

County SCOTT State KANSAS

Location: API #: 15-171-21322-0000

Permanent Datum GROUND LEVEL Elevation 3163  
Log Measured From KELLY BUSHING 7' A.G.L  
Drilling Measured From KELLY BUSHING

SEC 19 TWP 16S RGE 34W

Other Services  
CDL/CNL/PE  
MEL/SON  
Elevation  
K.B. 3170  
D.F. 3168  
G.L. 3163

Date	6/28/24
Run Number	ONE
Depth Driller	4869
Depth Logger	4868
Bottom Logged Interval	4866
Top Log Interval	00
Casing Driller	8.625 @ 250
Casing Logger	250
Bit Size	7.875
Type Fluid in Hole	CHEMICAL MUD
Density / Viscosity	9.2/61
pH / Fluid Loss	9.54/9.2
Source of Sample	FLOWLINE
Rm @ Meas. Temp	.650 @ 82F
Rmf @ Meas. Temp	.488 @ 82F
Rmc @ Meas. Temp	.780 @ 82F
Source of Rmf / Rmc	MEASUREMENT
Rm @ BHT	.430 @ 124F
Time Circulation Stopped	2 HOURS
Time Logger on Bottom	4:15 P.M.
Maximum Recorded Temperature	124F
Equipment Number	3802
Location	HAYS, KANSAS
Recorded By	COLE ROBBEN
Witnessed By	SEAN DEENIHAN

<<< Fold Here >>>

All interpretations are opinions based on inferences from electrical or other measurements and we cannot and do not guarantee the accuracy or correctness of any interpretation, and we shall not, except in the case of gross or willful negligence on our part, be liable or responsible for any loss, costs, damages, or expenses incurred or sustained by anyone resulting from any interpretation made by any of our officers, agents or employees. These interpretations are also subject to our general terms and conditions set out in our current Price Schedule.

### Comments

THANK YOU FOR USING ELI WIRELINE SERVICES, HAYS, KS. ( 785 ) 628-6395

### DIRECTIONS:

FROM PENCE, KANSAS GO WEST 2 MILES ON 270 ROAD, SOUTH 3/4 MILES ON APACHE ROAD, WEST INTO

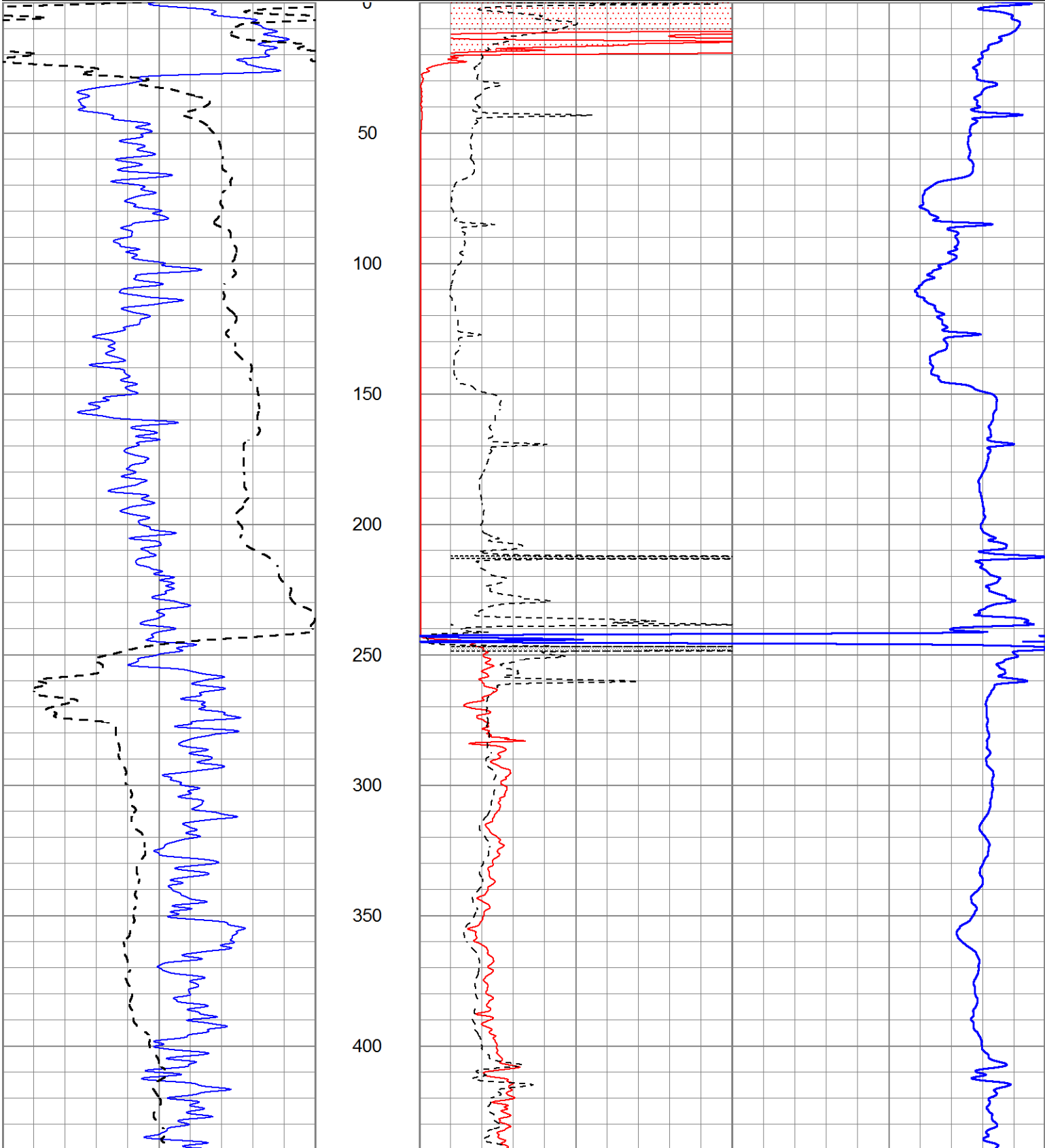


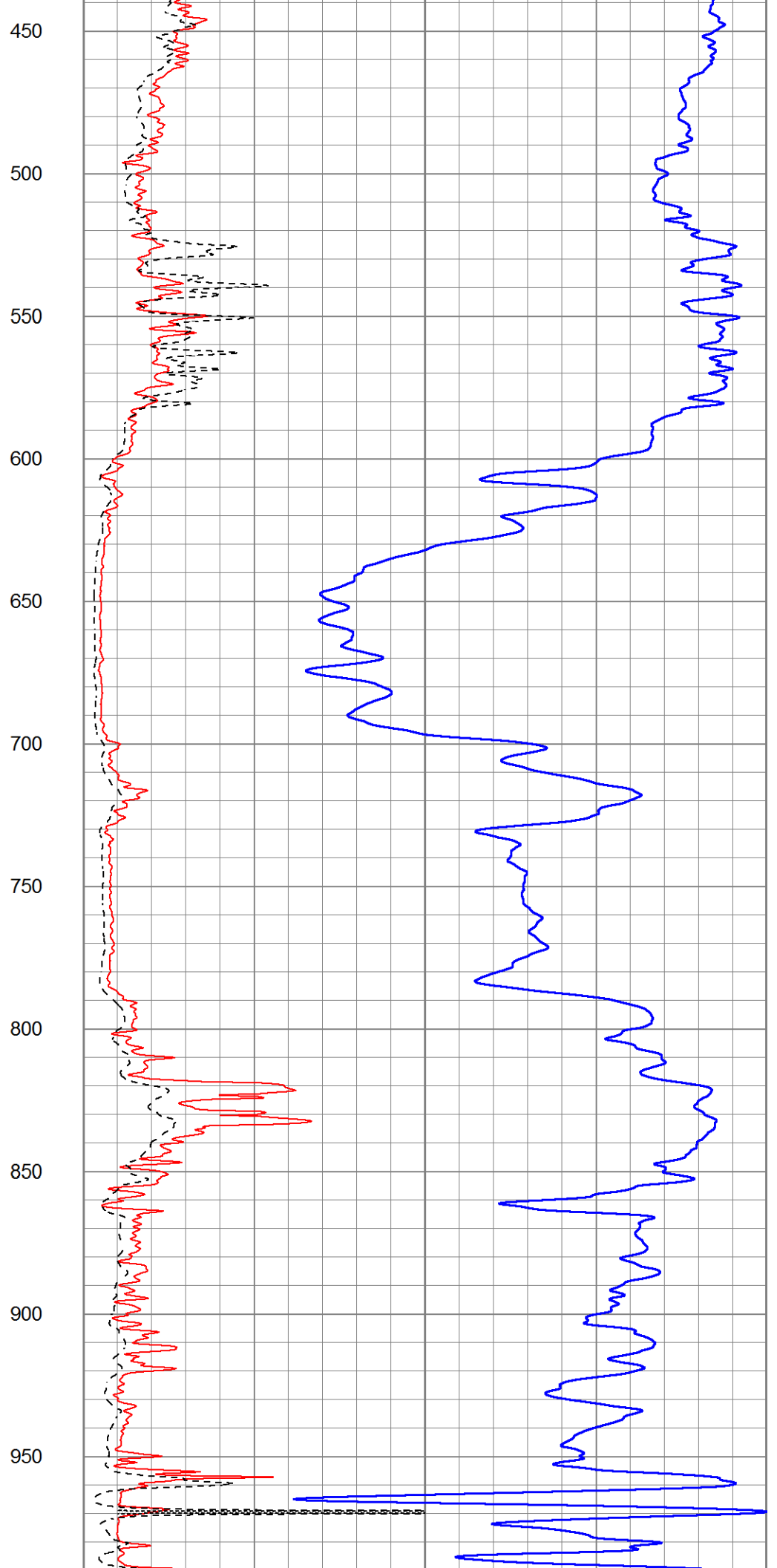
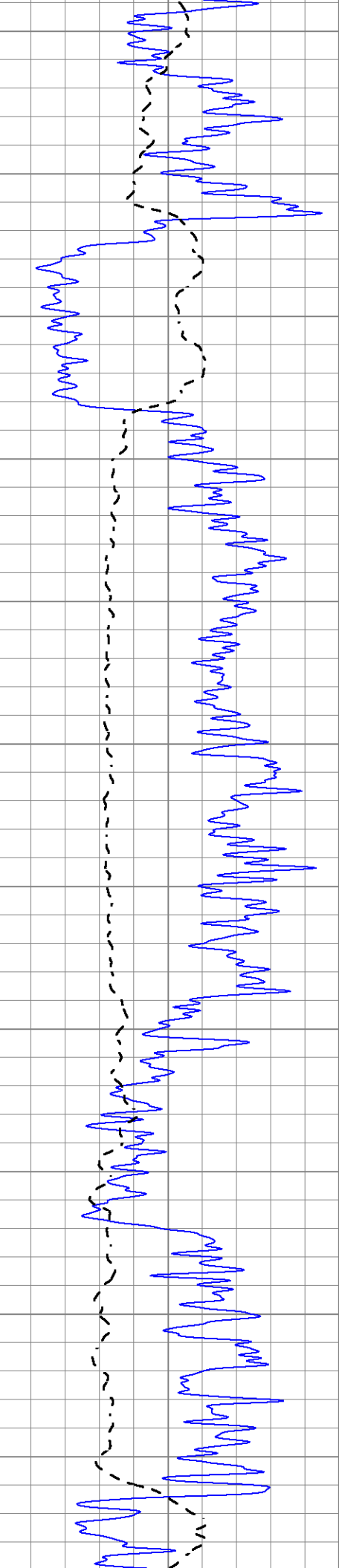
# MAIN SECTION

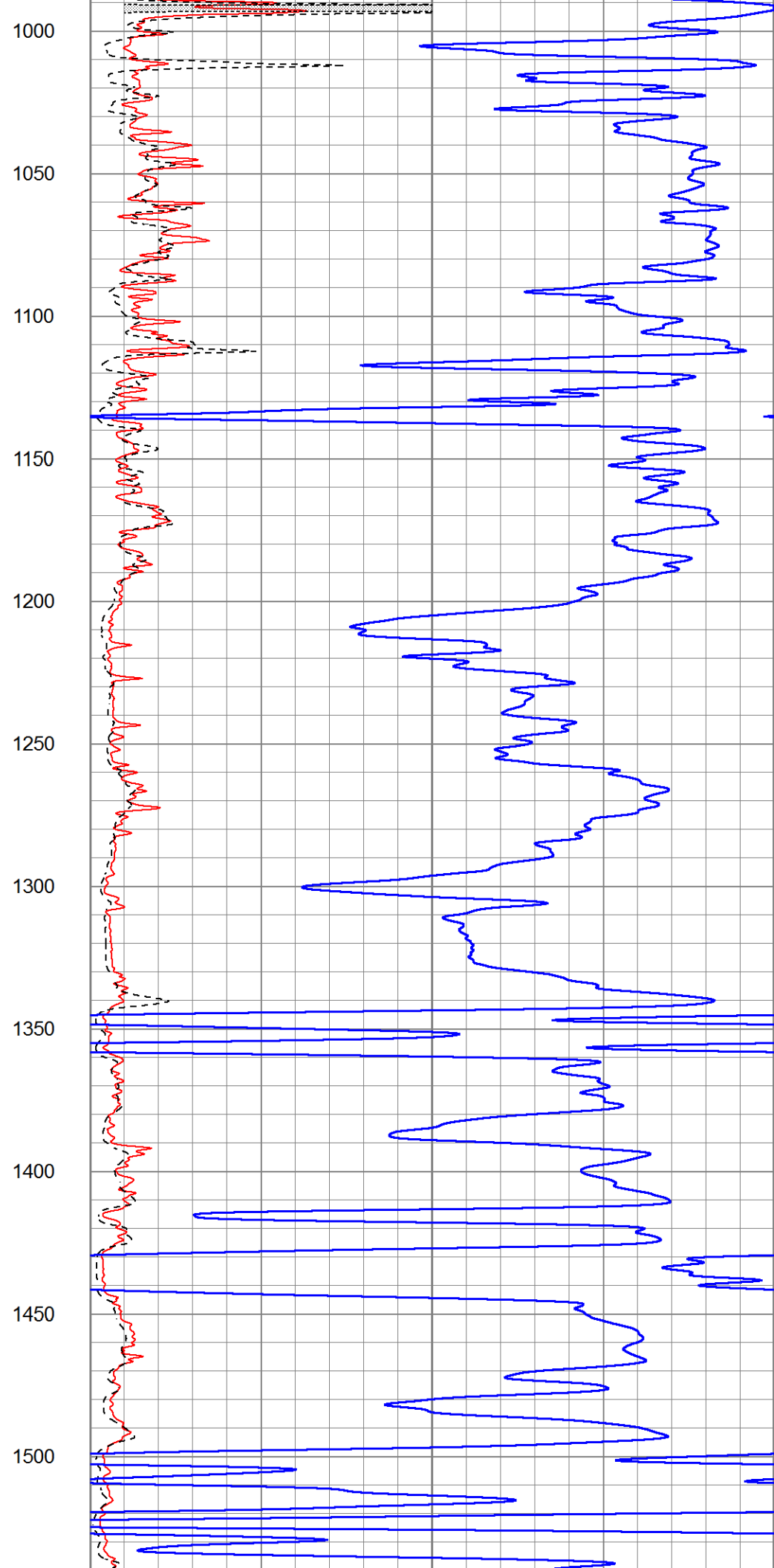
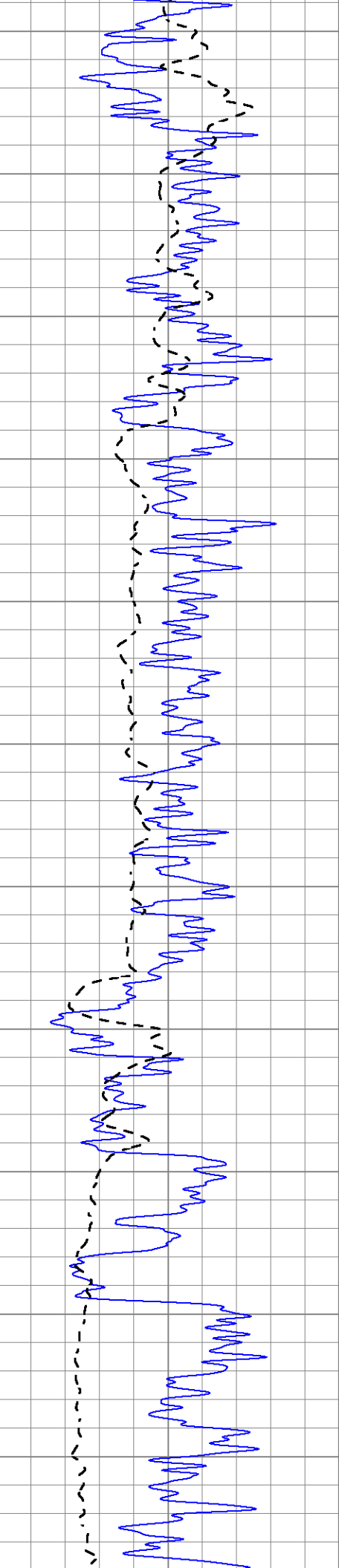
Database File 8792pe.db  
 Dataset Pathname pass3.10  
 Presentation Format \_dil2  
 Dataset Creation Fri Jun 28 17:52:37 2024  
 Charted by Depth in Feet scaled 1:600

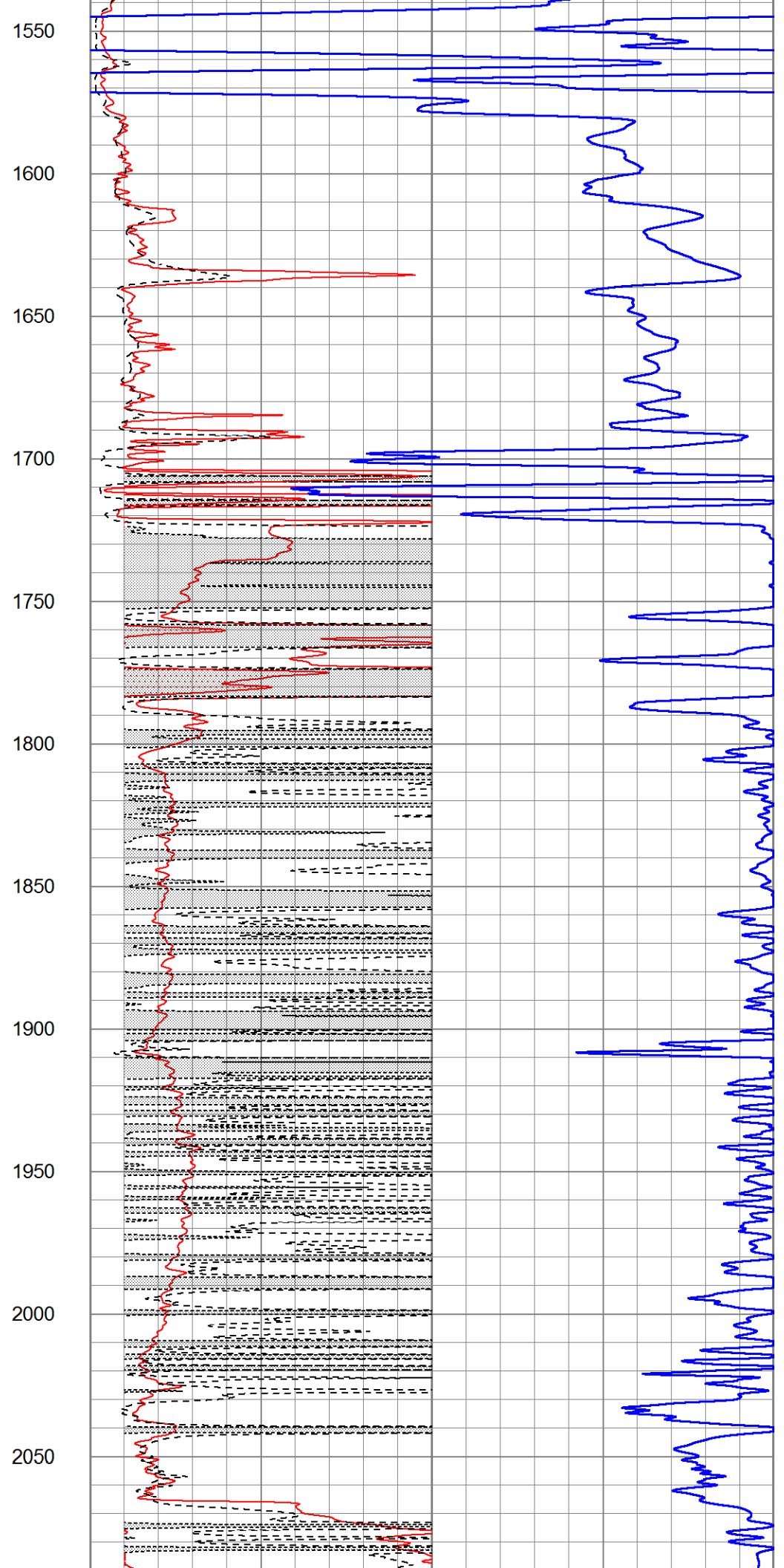
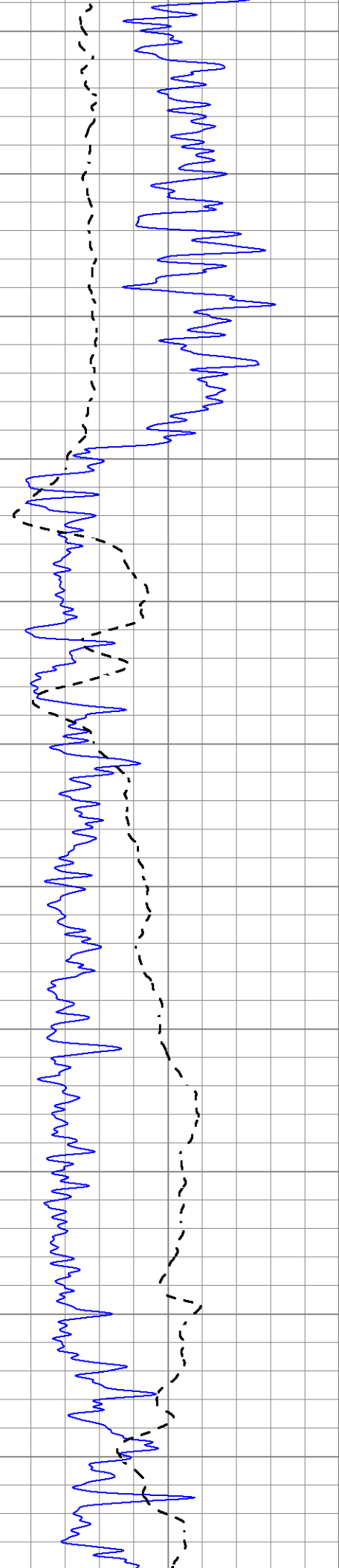
0	Gamma Ray (GAPI)	150
-100	SP (mV)	100

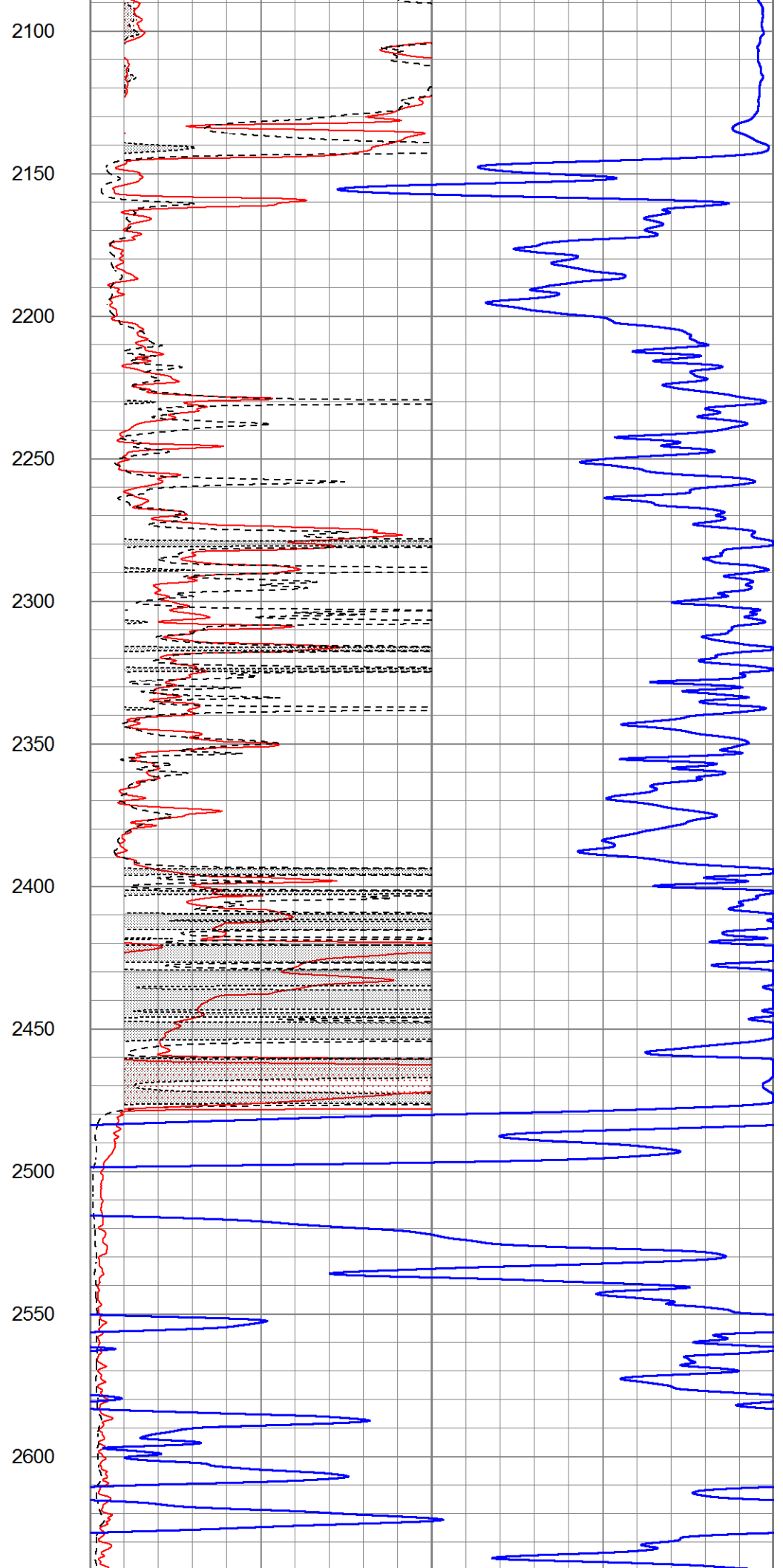
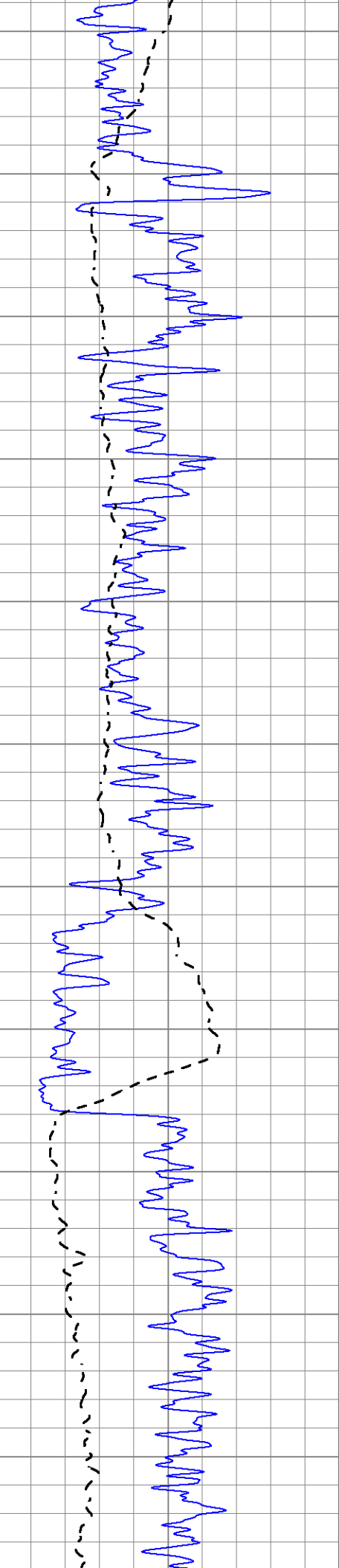
1000	CILD (mmho/m)	0
0	RLL3 (Ohm-m)	50
0	Deep Induction (Ohm-m)	50
50	RILD X10 (Ohm-m)	500
50	RLL3 X10 (Ohm-m)	500

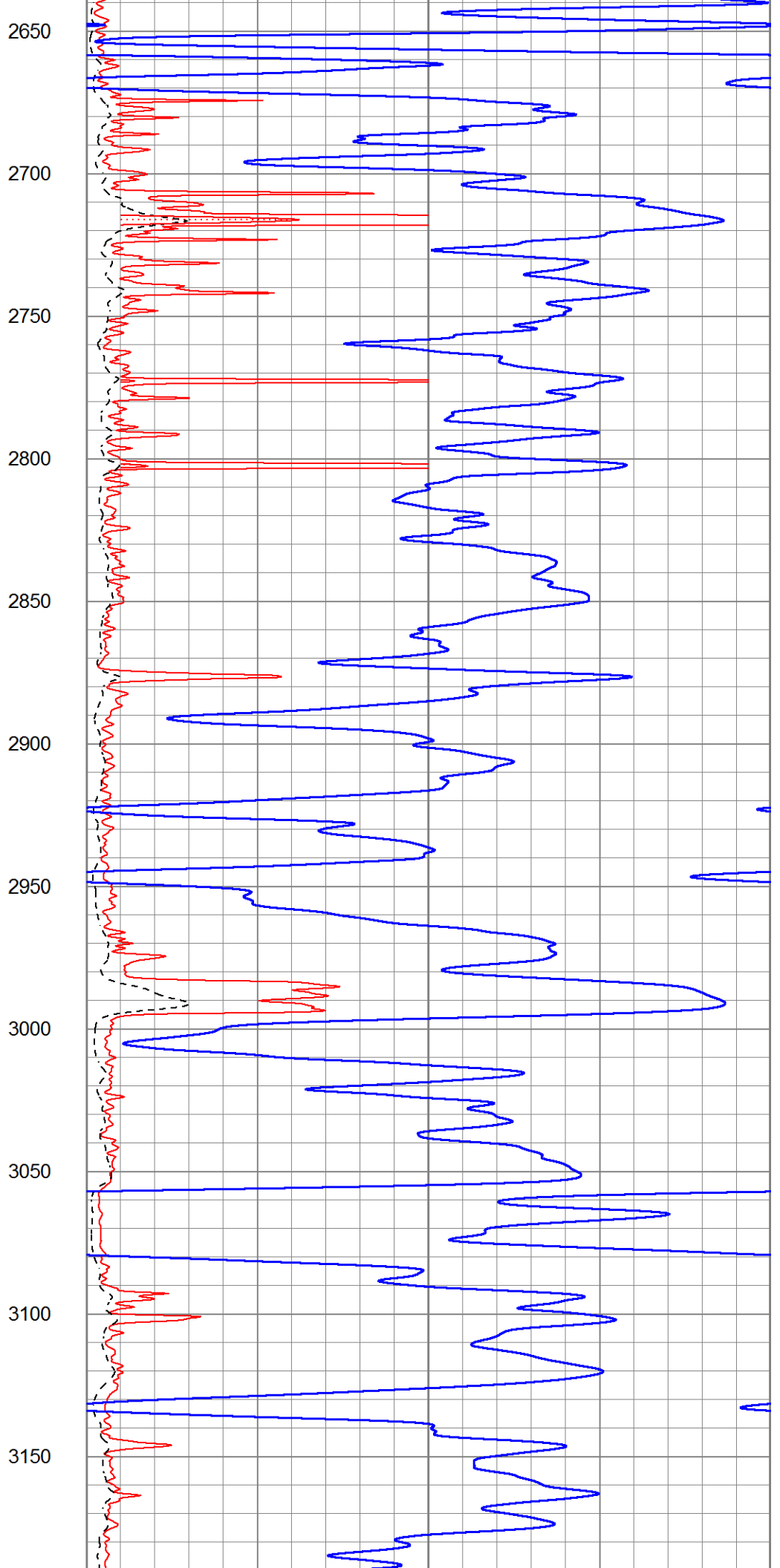
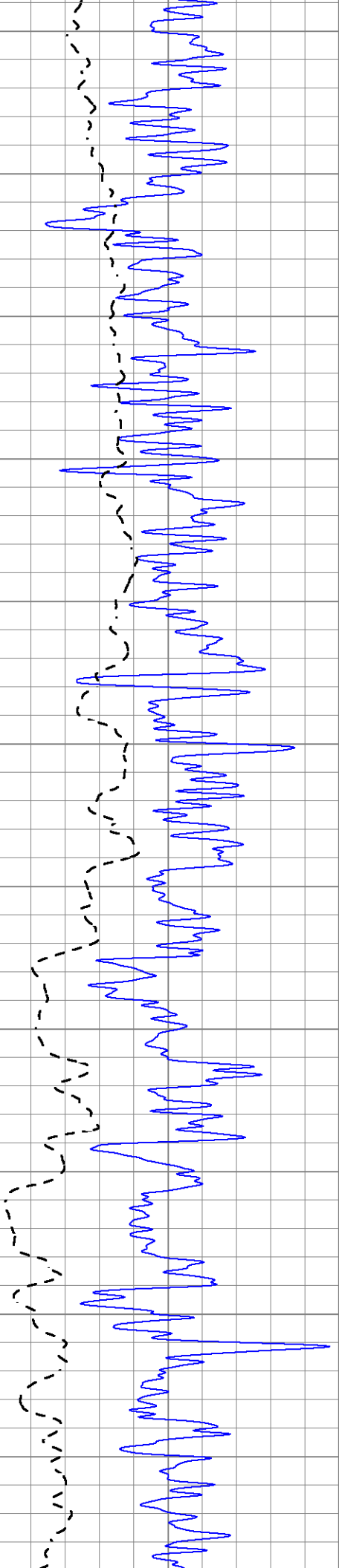


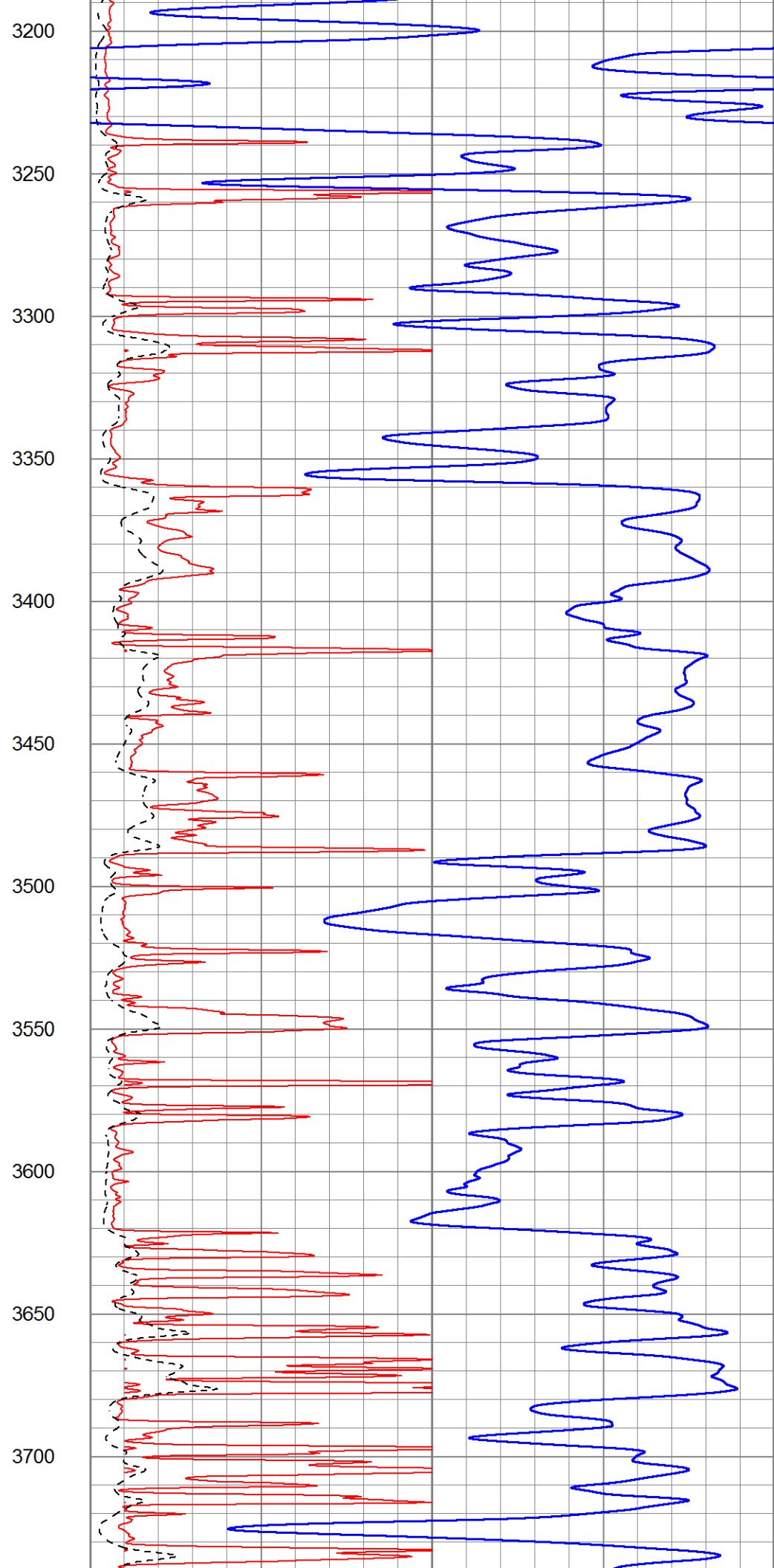
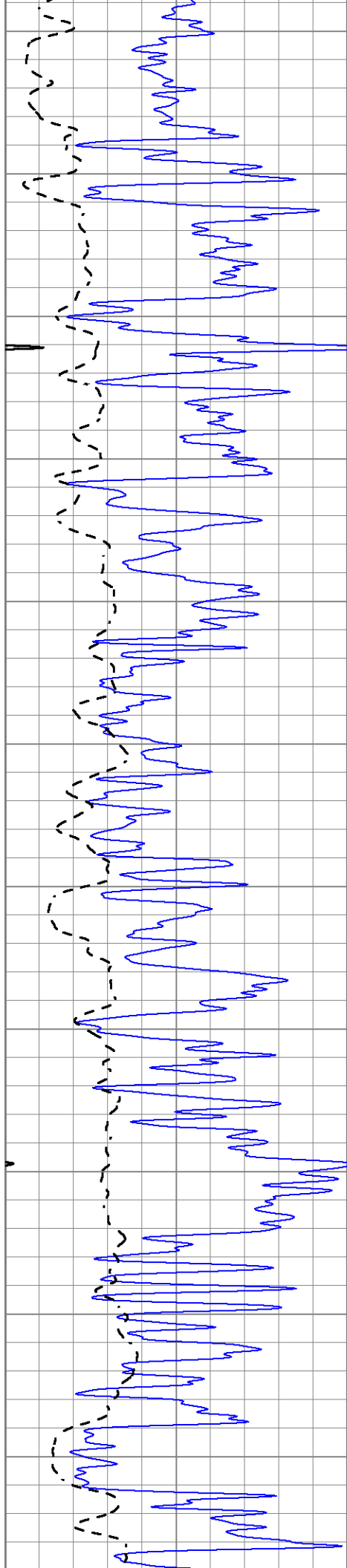


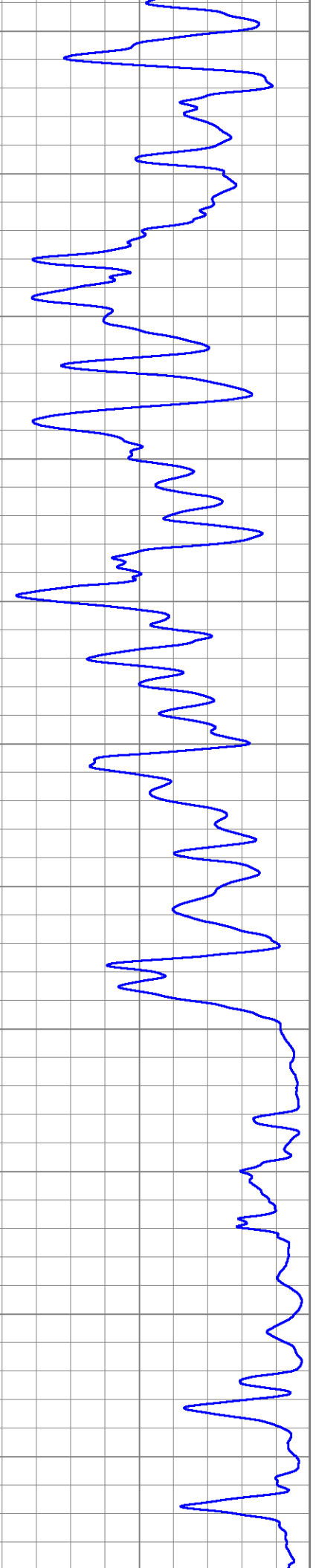
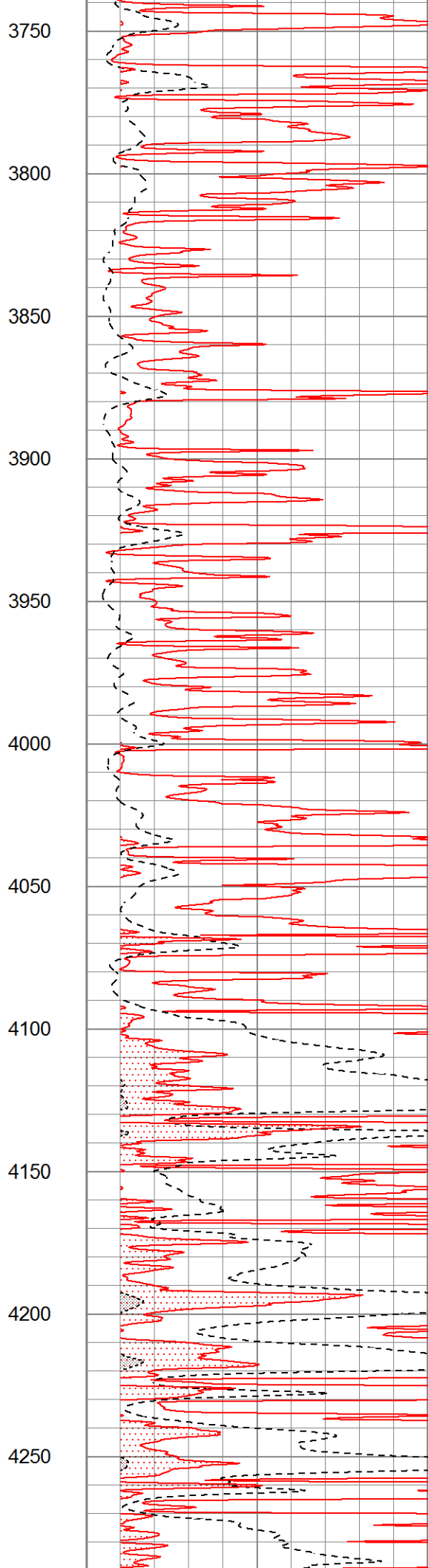
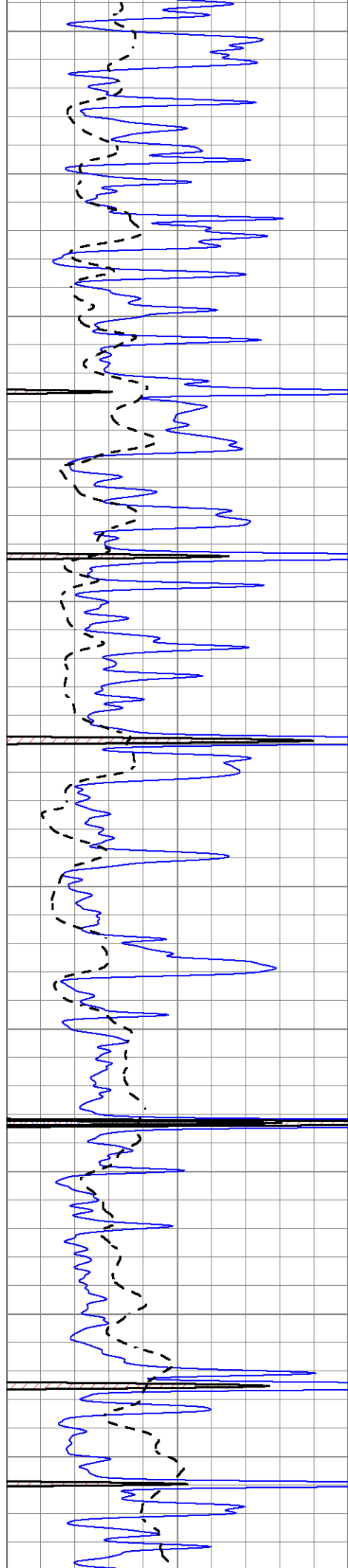


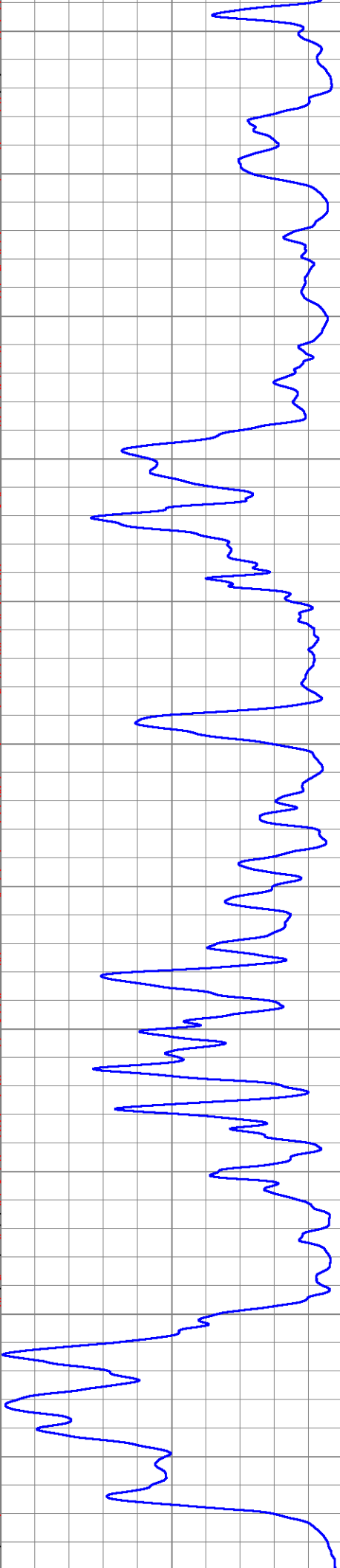
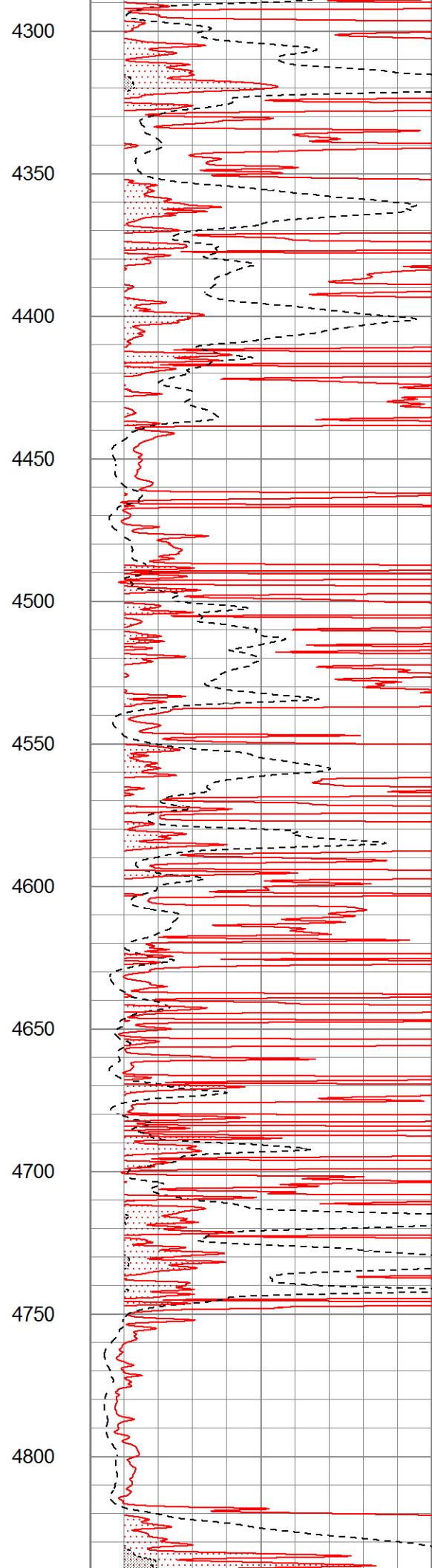
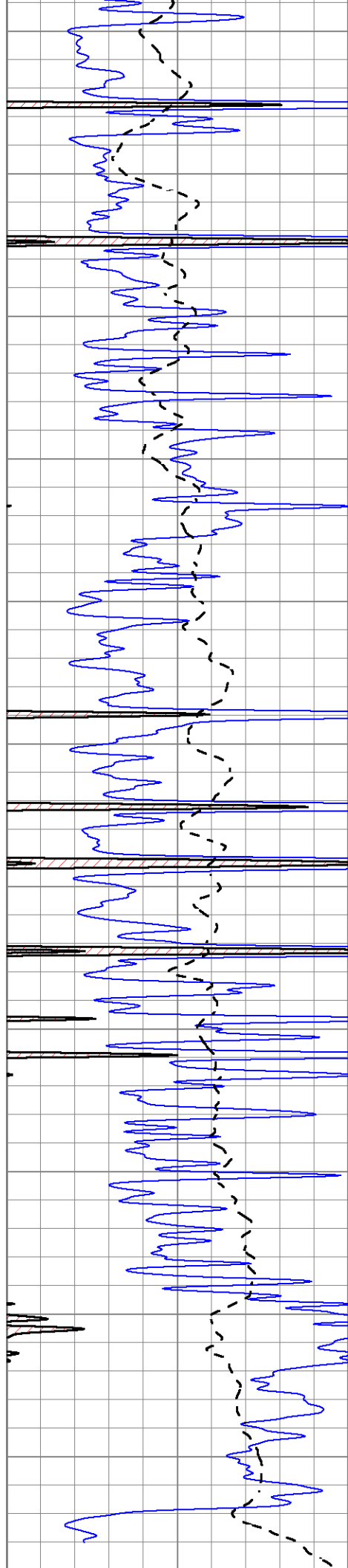


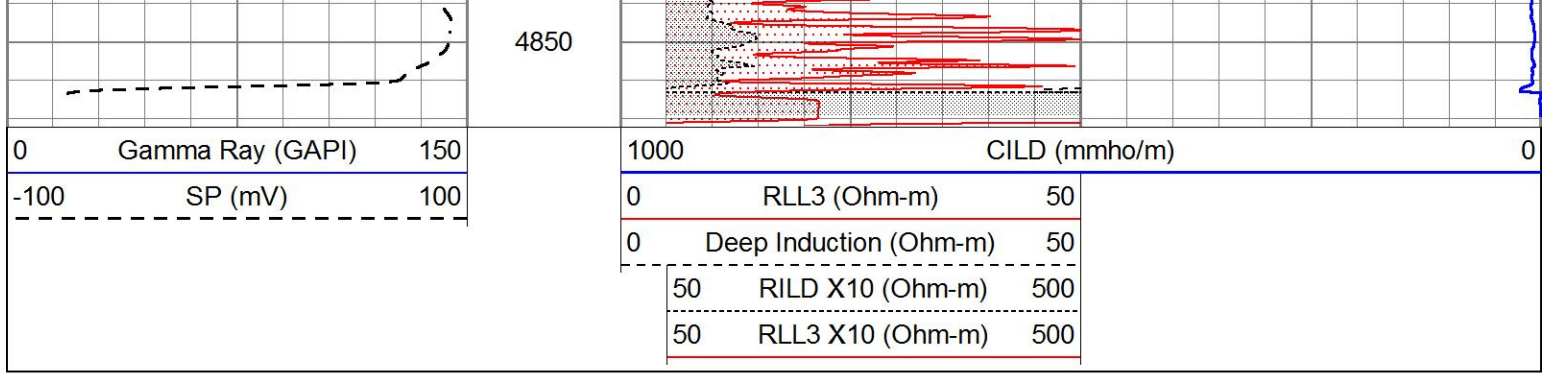








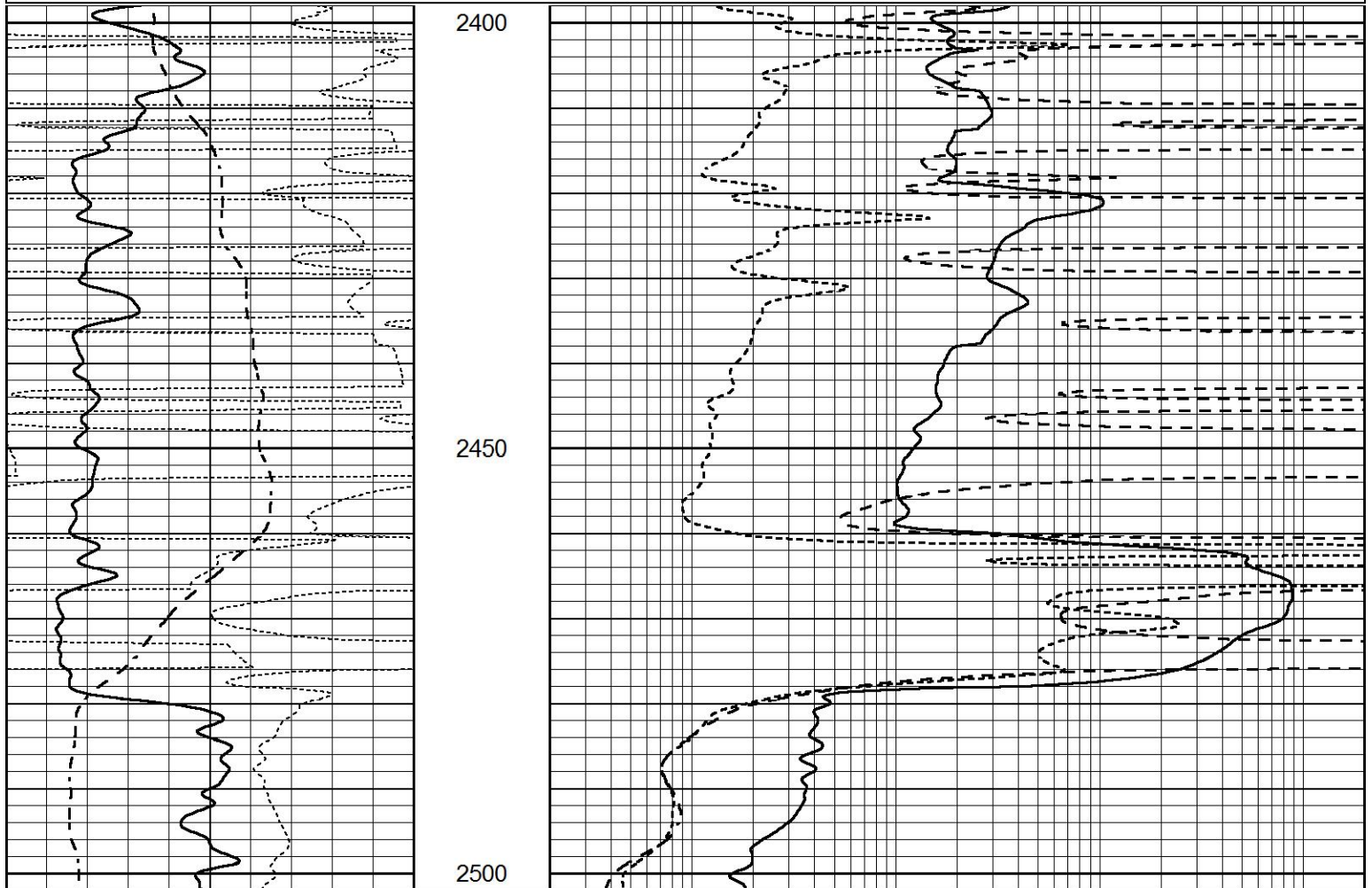




# ANHYDRITE

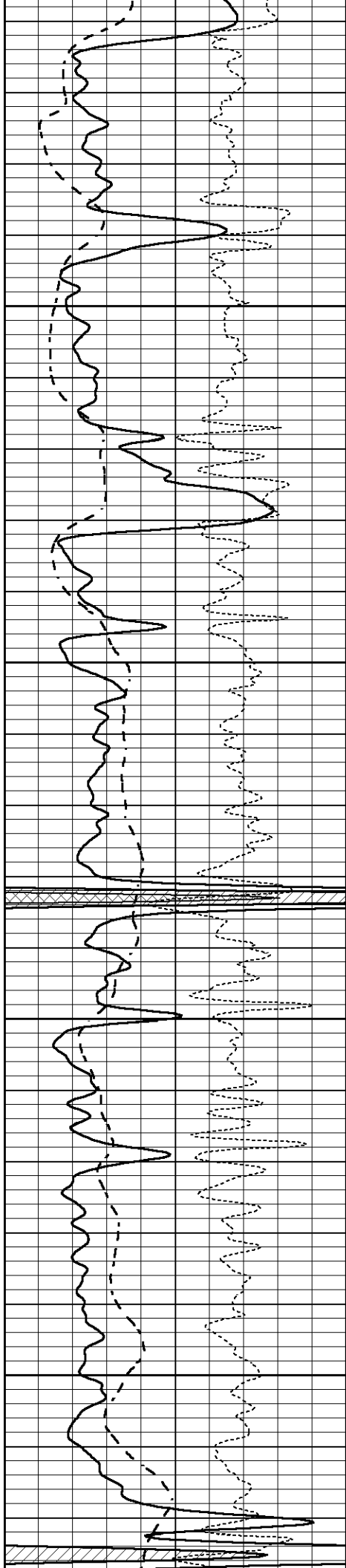
Database File 8792pe.db  
 Dataset Pathname pass3A  
 Presentation Format \_dil  
 Dataset Creation Fri Jun 28 17:26:02 2024  
 Charted by Depth in Feet scaled 1:240

0	GAMMA RAY (GAPI)	150	0.2	SHALLOW GUARD (Ohm-m)	2000
-100	SP (mV)	100	0.2	MEDIUM INDUCTION (Ohm-m)	2000
-250	Rxo/Rt	50	0.2	DEEP INDUCTION (Ohm-m)	2000



0	GAMMA RAY (GAPI)	150	0.2	SHALLOW GUARD (Ohm-m)	2000
-100	SP (mV)	100	0.2	MEDIUM INDUCTION (Ohm-m)	2000
-250	Rxo/Rt	50	0.2	DEEP INDUCTION (Ohm-m)	2000



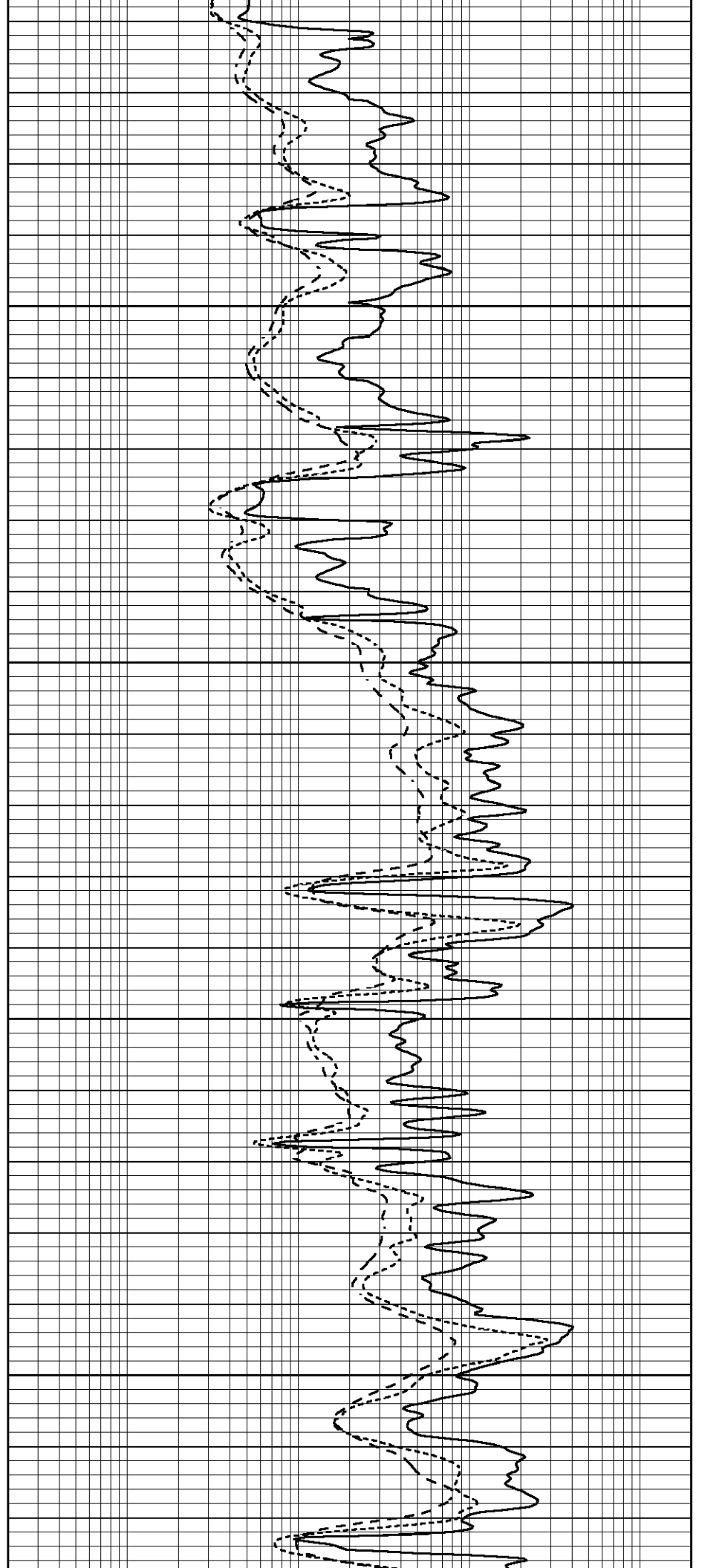


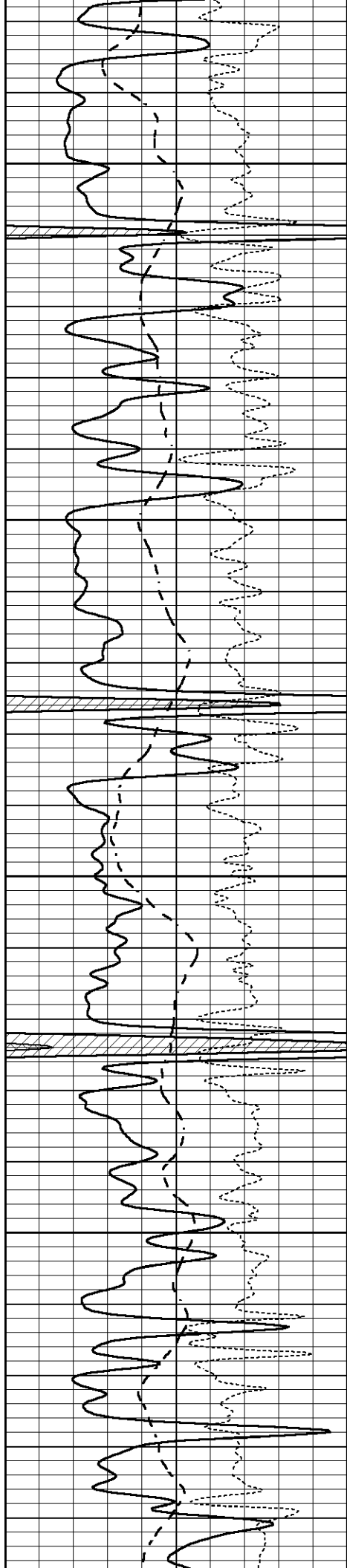
4050

4100

4150

4200



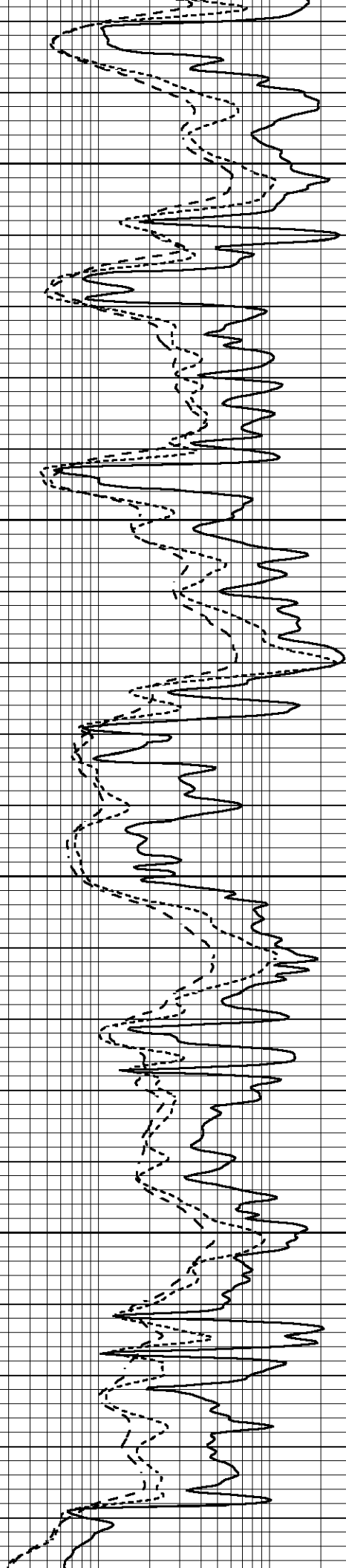


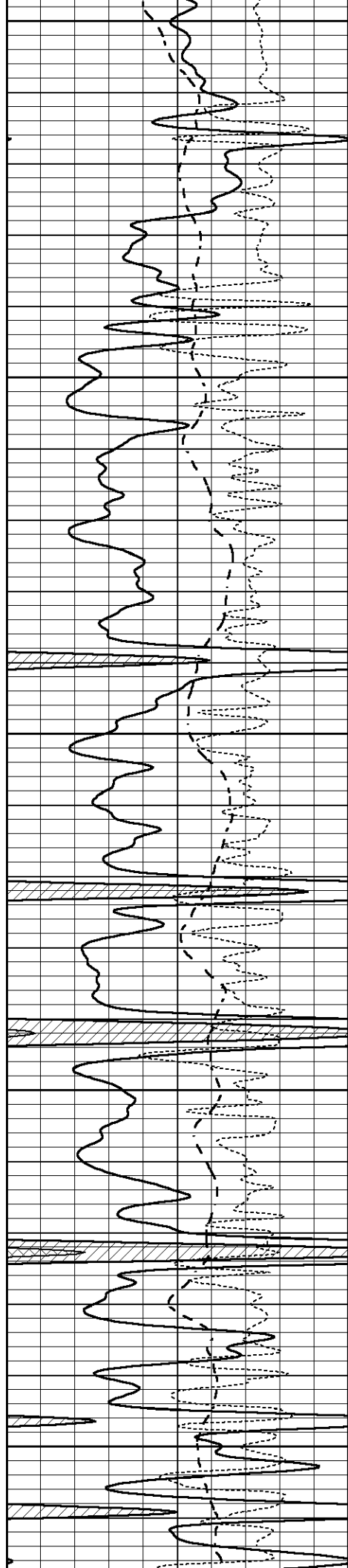
4250

4300

4350

4400





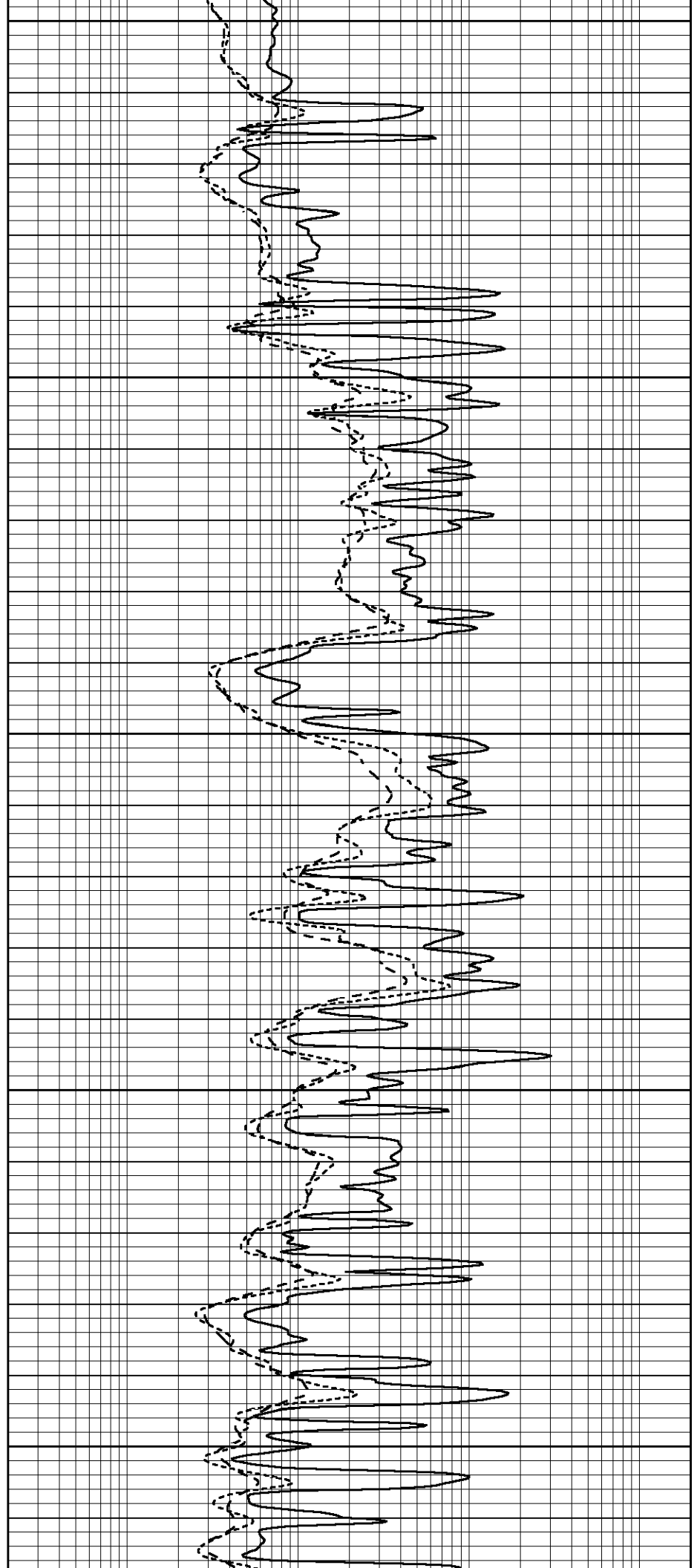
4450

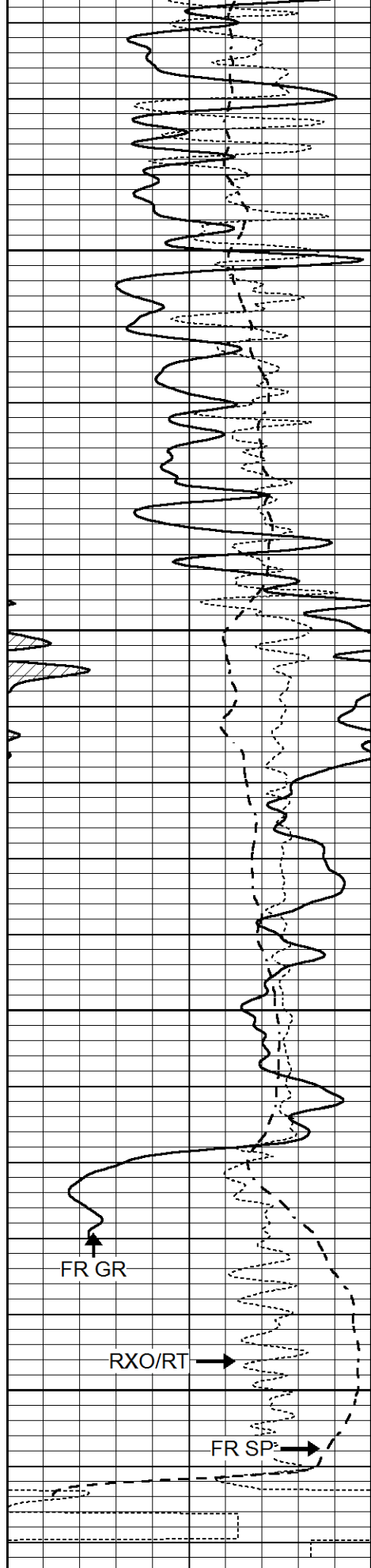
4500

4550

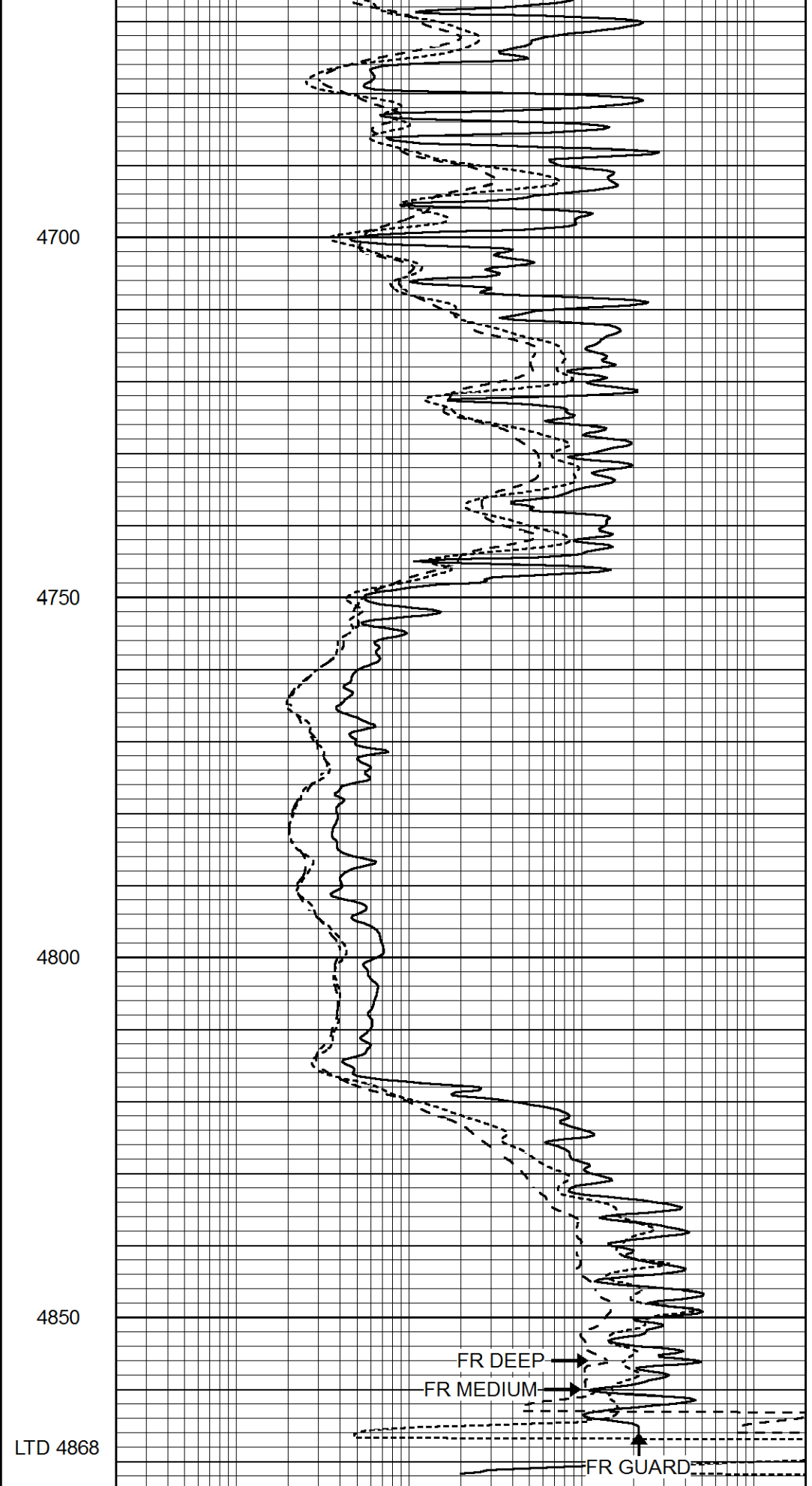
4600

4650





0	GAMMA RAY (GAPI)	150
-100	SP (mV)	100
-250	Rxo/Rt	50



0.2	SHALLOW GUARD (Ohm-m)	2000
0.2	MEDIUM INDUCTION (Ohm-m)	2000
0.2	DEEP INDUCTION (Ohm-m)	2000

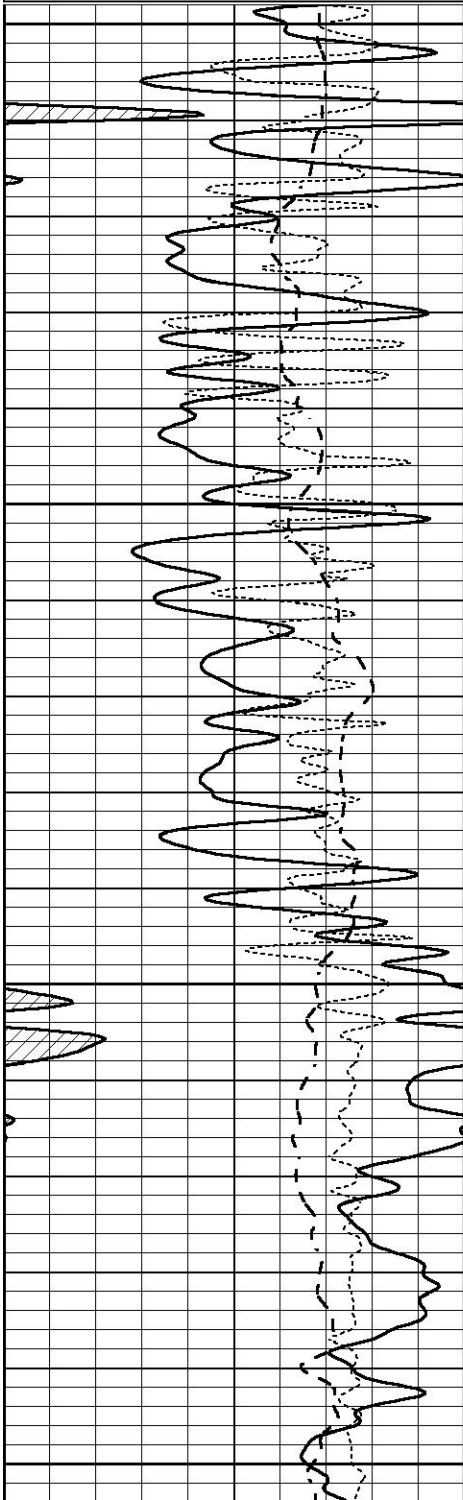


# REPEAT SECTION

Database File 8792pe.db  
Dataset Pathname pass2R  
Presentation Format \_dil  
Dataset Creation Fri Jun 28 17:38:26 2024  
Charted by Depth in Feet scaled 1:240

0	GAMMA RAY (GAPI)	150
-100	SP (mV)	100
-250	Rxo/Rt	50

0.2	SHALLOW GUARD (Ohm-m)	2000
0.2	MEDIUM INDUCTION (Ohm-m)	2000
0.2	DEEP INDUCTION (Ohm-m)	2000

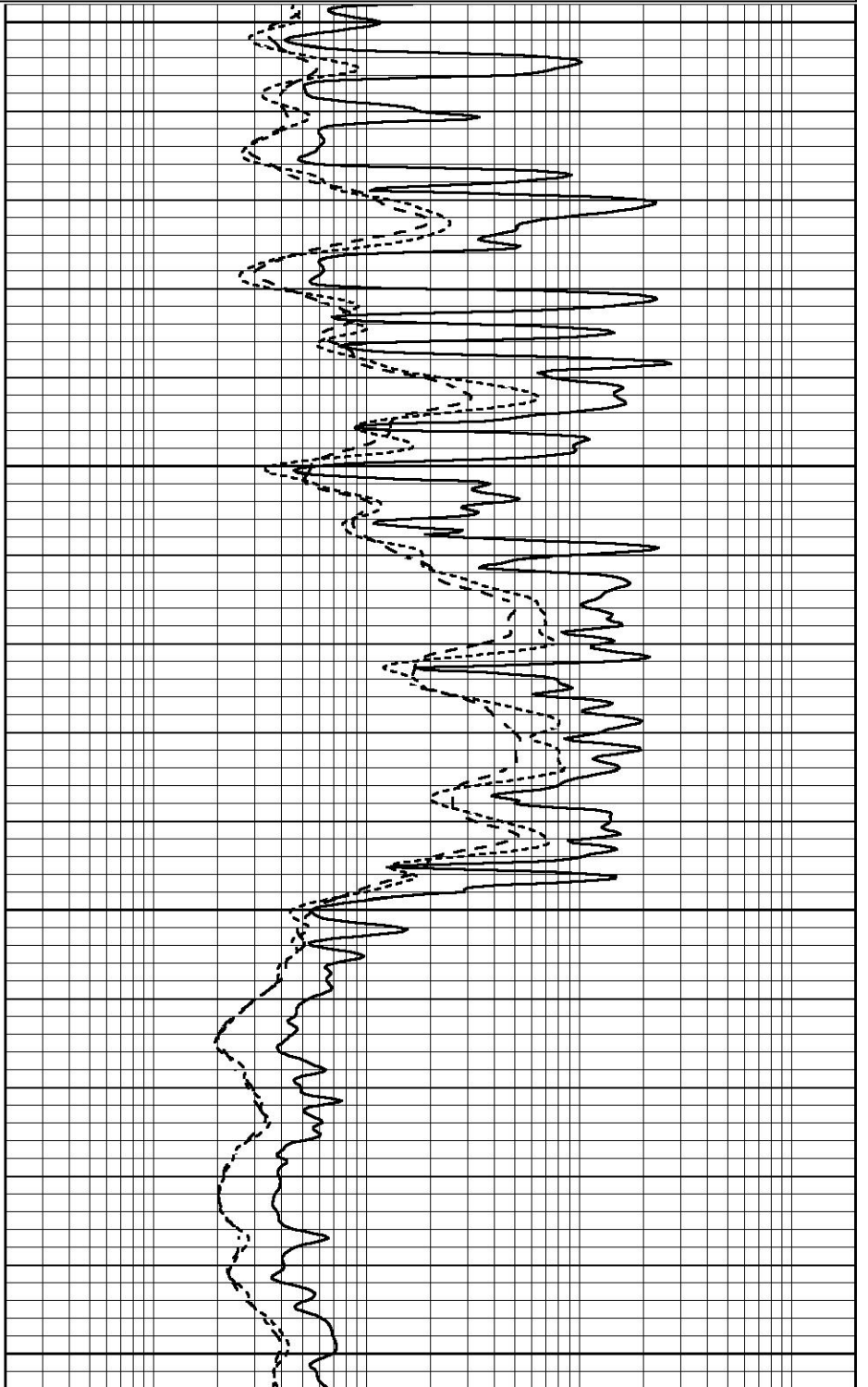


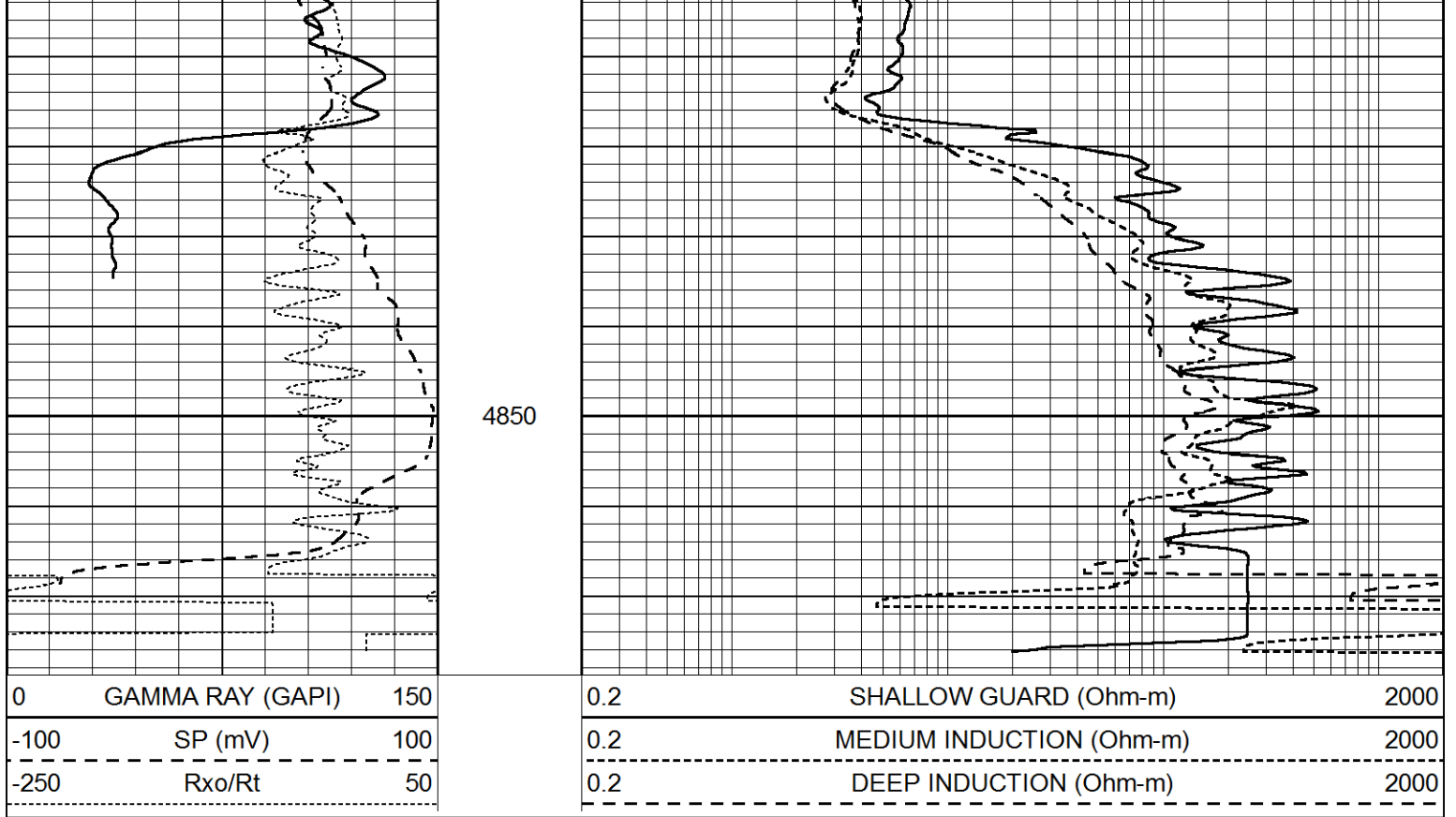
4650

4700

4750

4800





### Calibration Report

Database File 8792pe.db  
 Dataset Pathname pass3.10  
 Dataset Creation Fri Jun 28 17:52:37 2024

### Dual Induction Calibration Report

Serial-Model: FW1410-56-Probe  
 Surface Cal Performed: Tue Apr 30 11:10:17 2024  
 Downhole Cal Performed: Tue Jul 25 12:15:37 2017  
 After Survey Verification Performed: Tue Jul 25 12:15:38 2017

#### Surface Calibration

Loop:	Readings			V	References			Results	
	Air	Loop			Air	Loop		m	b
Deep	0.008	0.765			1.000	400.000	mmho/m	520.000	19.000
Medium	-0.056	0.761			1.000	464.000	mmho/m	540.000	189.000
Internal:	Zero			V	Zero			m	
Deep	0.005	0.624				0.000	400.000	mmho/m	645.611
Medium	0.012	0.721			0.000	464.000	mmho/m	653.591	-7.532

#### Downhole Calibration

	Readings			mmho/m	References			Results	
	Zero	Cal			Zero	Cal		m'	b'
Deep	-0.647	301.329	mmho/m	-0.780	336.378	mmho/m	1.117	-0.058	
Medium	38.256	411.013	mmho/m	39.046	441.706	mmho/m	1.080	-2.280	
LL3		7.471	V		2500.000	Ohm-m			
		0.001	V		20.000	Ohm-m			
		-7.085	V		4000.000	mmho-m			

#### After Survey Verification

Readings	Targets	Results
----------	---------	---------

	Zero	Cal		Zero	Cal		m'	b'
Deep	0.000	0.000	mmho/m	-0.647	301.329	mmho/m	1.000	0.000
Medium	0.000	0.000	mmho/m	38.256	411.013	mmho/m	1.000	0.000
LL3		0.000	Ohm-m		1500.000	Ohm-m		
		0.000	Ohm-m		20.000	Ohm-m		
		0.000	mmho-m		3745.000	mmho-m		

Litho Density Calibration Report  
Serial: 002 Model: PRB

Master Calibration

Performed Tue Mar 05 14:38:56 2014

	Background	Magnesium	Aluminum	Aluminum+Fe	
Window 1	725.2	6706.7	2064.1	1781.5	cps
Window 2	662.7	5683.9	1787.4	1577.3	cps
Window 3	531.1	2851.1	1038.7	963.2	cps
Window 4	159.2	158.7	158.9	156.4	cps
Long Space	0.0	5021.2	1124.6	914.6	cps
Short Space	1.4	1196.9	818.3	680.9	cps
Rho		1.7100	2.5900	0.0000	g/cc
Pe		2.0000	2.7500	5.7900	
Rib Angle	: 45.7	Rib Slope	: 1.026	Density/Spine Ratio	: 0.570
Spine Angle	: 75.7	Spine Slope	: 3.935	Spine Intercept	: -19.4

Before Survey Verification

Performed Wed Dec 31 18:00:00 1969

Window 1	0.0	0.0	0.0	0.0	cps
Window 2	0.0	0.0	0.0	0.0	cps
Window 3	0.0	0.0	0.0	0.0	cps
Window 4	0.0	0.0	0.0	0.0	cps
Long Space	0.0	0.0	0.0	0.0	cps
Short Space	0.0	0.0	0.0	0.0	cps
Measured Rho		0.0000	0.0000	0.0000	g/cc
Measured Correction		0.0000	0.0000	0.0000	g/cc
Measured Pe			0.0000	0.0000	

After Survey Verification

Performed Wed Dec 31 18:00:00 1969

Window 1	0.0	0.0	0.0	0.0	cps
Window 2	0.0	0.0	0.0	0.0	cps
Window 3	0.0	0.0	0.0	0.0	cps
Window 4	0.0	0.0	0.0	0.0	cps
Long Space	0.0	0.0	0.0	0.0	cps
Short Space	0.0	0.0	0.0	0.0	cps
Measured Rho		0.0000	0.0000	0.0000	g/cc
Measured Correction		0.0000	0.0000	0.0000	g/cc
Measured Pe			0.0000	0.0000	

Compensated Neutron Calibration Report

Serial Number: 080621PMC  
Tool Model: NABORS

PRE-SURVEY VERIFICATION

Detector	Readings	Measured	Target
----------	----------	----------	--------

Short Space  
Long Space

cps  
cps

pu

pu

POST-SURVEY VERIFICATION

Detector

Readings

Measured

Target

Short Space  
Long Space

cps  
cps

pu

pu

Gamma Ray Calibration Report

Serial Number:  
Tool Model:  
Performed:

46001  
Probe1  
Thu Apr 20 09:55:57 2023

Calibrator Value:

1.0                      GAPI

Background Reading:  
Calibrator Reading:

0.0                      cps  
1.0                      cps

Sensitivity:

0.4300                      GAPI/cps