



MICRO LOG

Company PALOMINO PETROLEUM  
 Well LYIN' EYES #1  
 Field BASINGER  
 County TREGO  
 State KS

Company PALOMINO PETROLEUM  
 Well LYIN' EYES #1  
 Field BASINGER  
 County TREGO State KS

Location: 2275' FSL & 690' FWL  
 API #: 15 195 23148  
 Permanent Datum SEC 33 TWP 15S RGE 25W  
 Log Measured From KB 8' AGL  
 Drilling Measured From KB  
 Elevation 2453  
 Other Services CDNL DIL  
 Elevation K.B. 2461 D.F. 2459 G.L. 2453

Date	9/13/22
Run Number	TWO
Depth Driller	4500
Depth Logger	4500
Bottom Logged Interval	4498
Top Log Interval	3400
Casing Driller	8 5/8" @ 222
Casing Logger	222
Bit Size	7 7/8"
Type Fluid in Hole	Chemical
Density / Viscosity	9.2/57
pH / Fluid Loss	10.0/8.8
Source of Sample	Pit
Rm @ Meas. Temp	1.3@80degf
Rmf @ Meas. Temp	.98@80degf
Rmc @ Meas. Temp	1.56@80degf
Source of Rmf / Rmc	Calculated
Rm @ BHT	85@121degf
Time Circulation Stopped	6:30 P.M.
Time Logger on Bottom	9:30 PM
Maximum Recorded Temperature	121degf
Equipment Number	T605
Location	Hays, KS
Recorded By	GUS PFANENSTIEL
Witnessed By	KEATON JONES

<<< Fold Here >>>

All interpretations are opinions based on inferences from electrical or other measurements and we cannot and do not guarantee the accuracy or correctness of any interpretation, and we shall not, except in the case of gross or willful negligence on our part, be liable or responsible for any loss, costs, damages, or expenses incurred or sustained by anyone resulting from any interpretation made by any of our officers, agents or employees. These interpretations are also subject to our general terms and conditions set out in our current Price Schedule.

Comments

ARNOLD WEST TO H RD. 4 NORTH TO COUNTY LINE,  
 1 WEST, 1/2 NORTH, EAST INTO.  
 Thank You for using Gemini Wireline LLC  
 785-625-1182

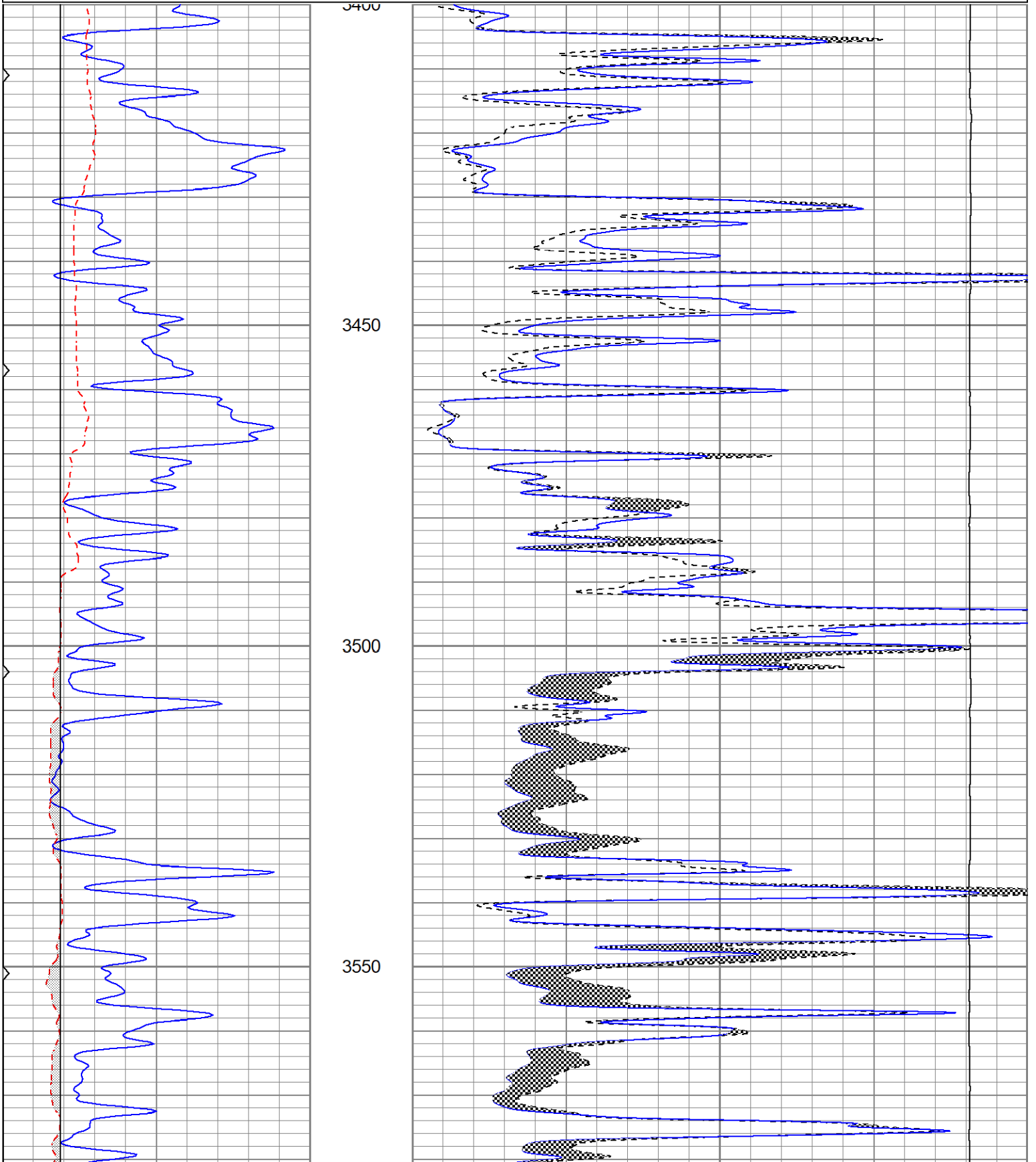


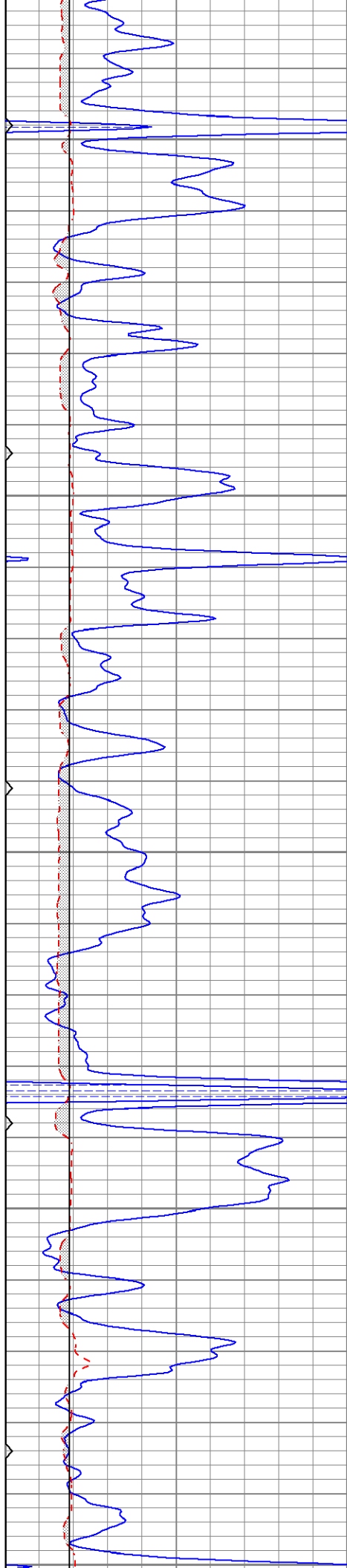
MAIN PASS

Database File pplyineyes#1oh.db  
 Dataset Pathname pass5.1  
 Presentation Format kml  
 Dataset Creation Wed Sep 14 00:00:02 2022  
 Charted by Depth in Feet scaled 1:240

0	GR (GAPI)	150
6	MCAL (in)	16
6	BOREID (in)	16
0	MINMK	50

0	MN 2" (Ohm-m)	20
0	MI 1" (Ohm-m)	20
10000	LTEN (lb)	0





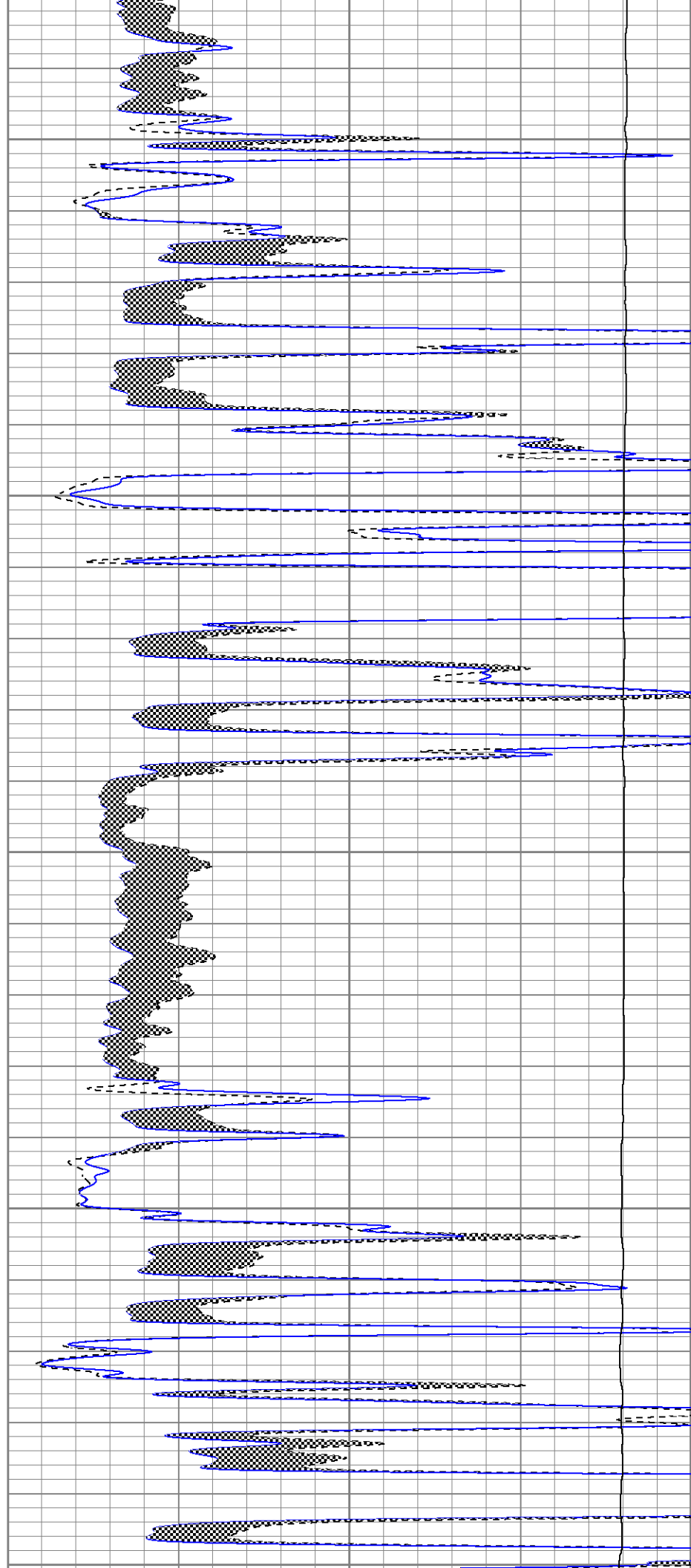
3600

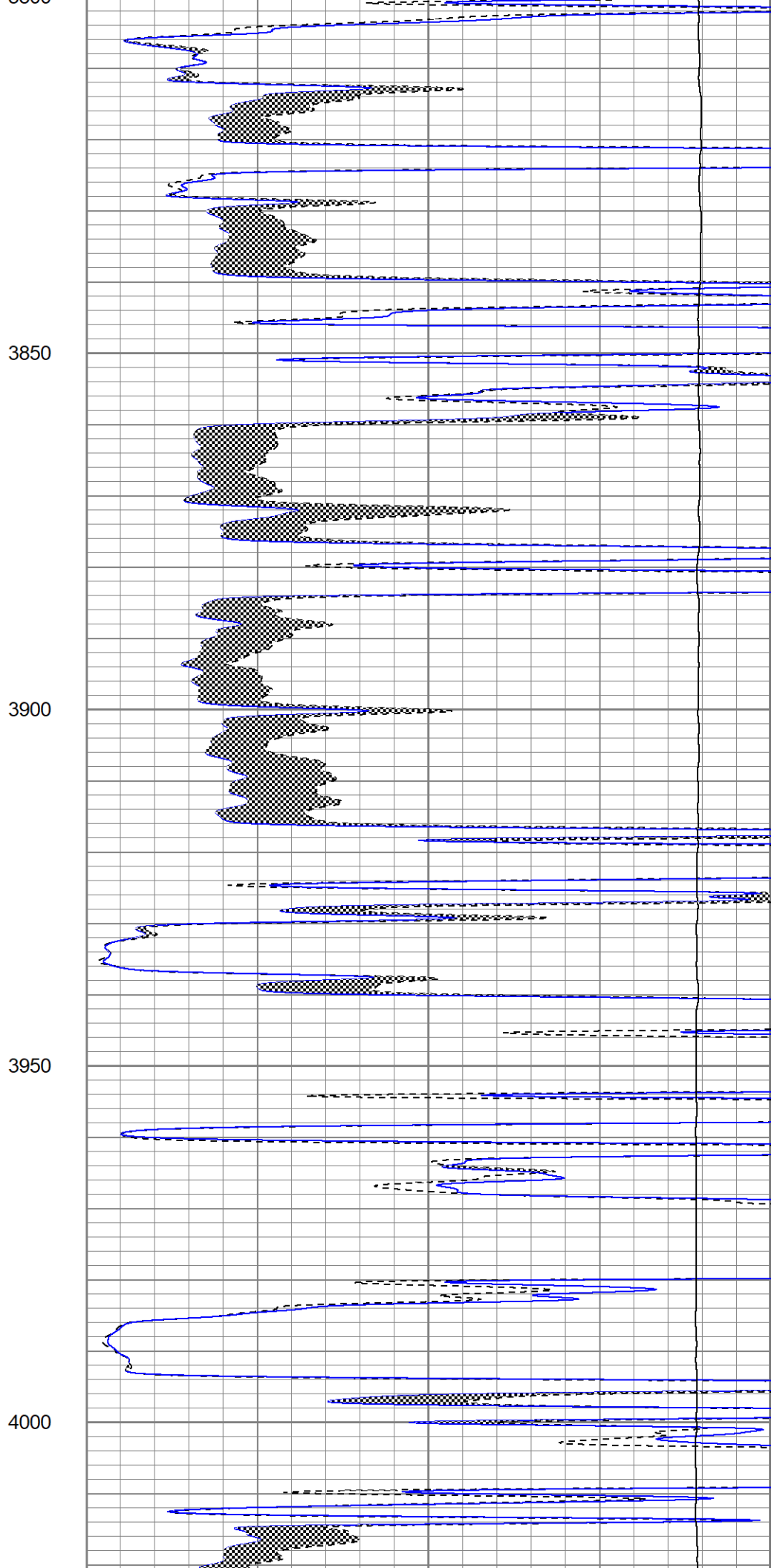
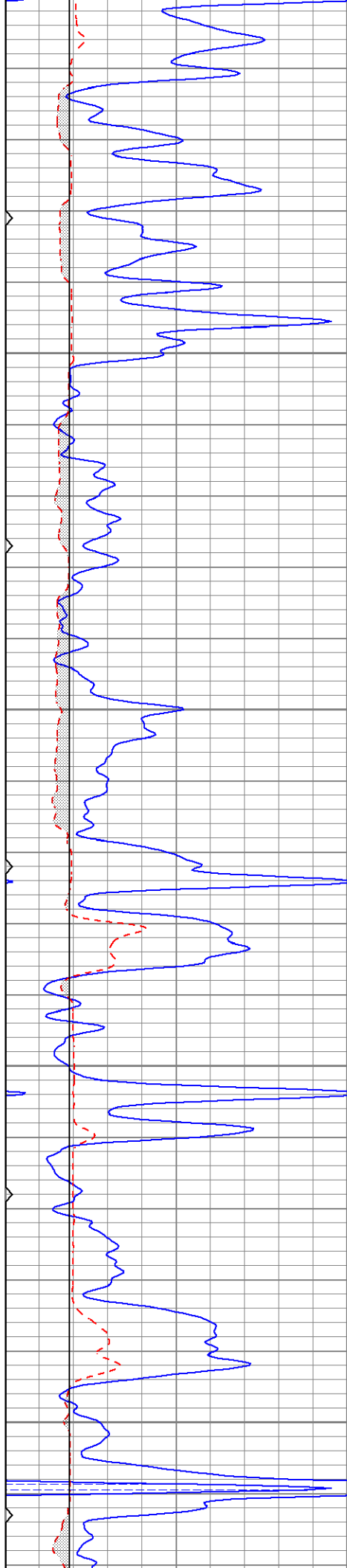
3650

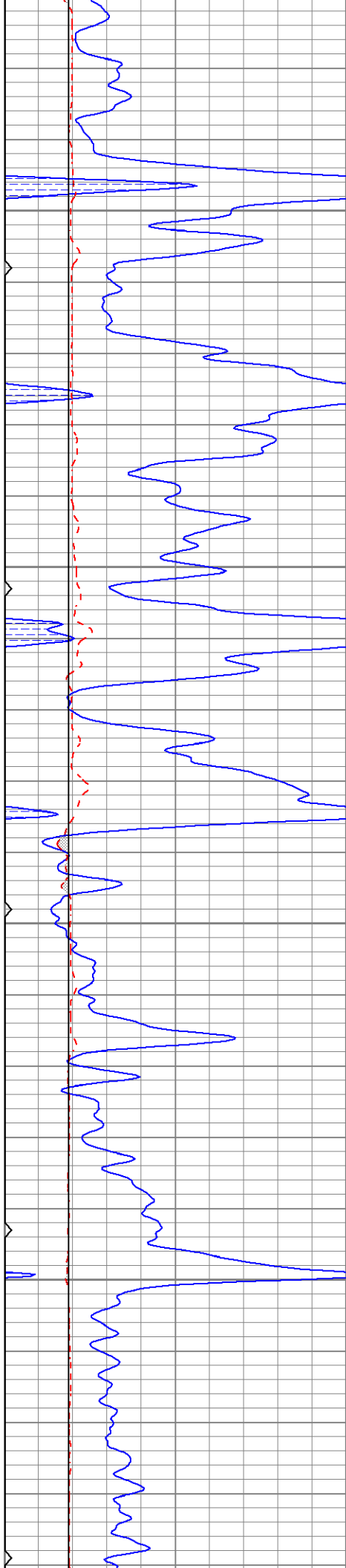
3700

3750

3800





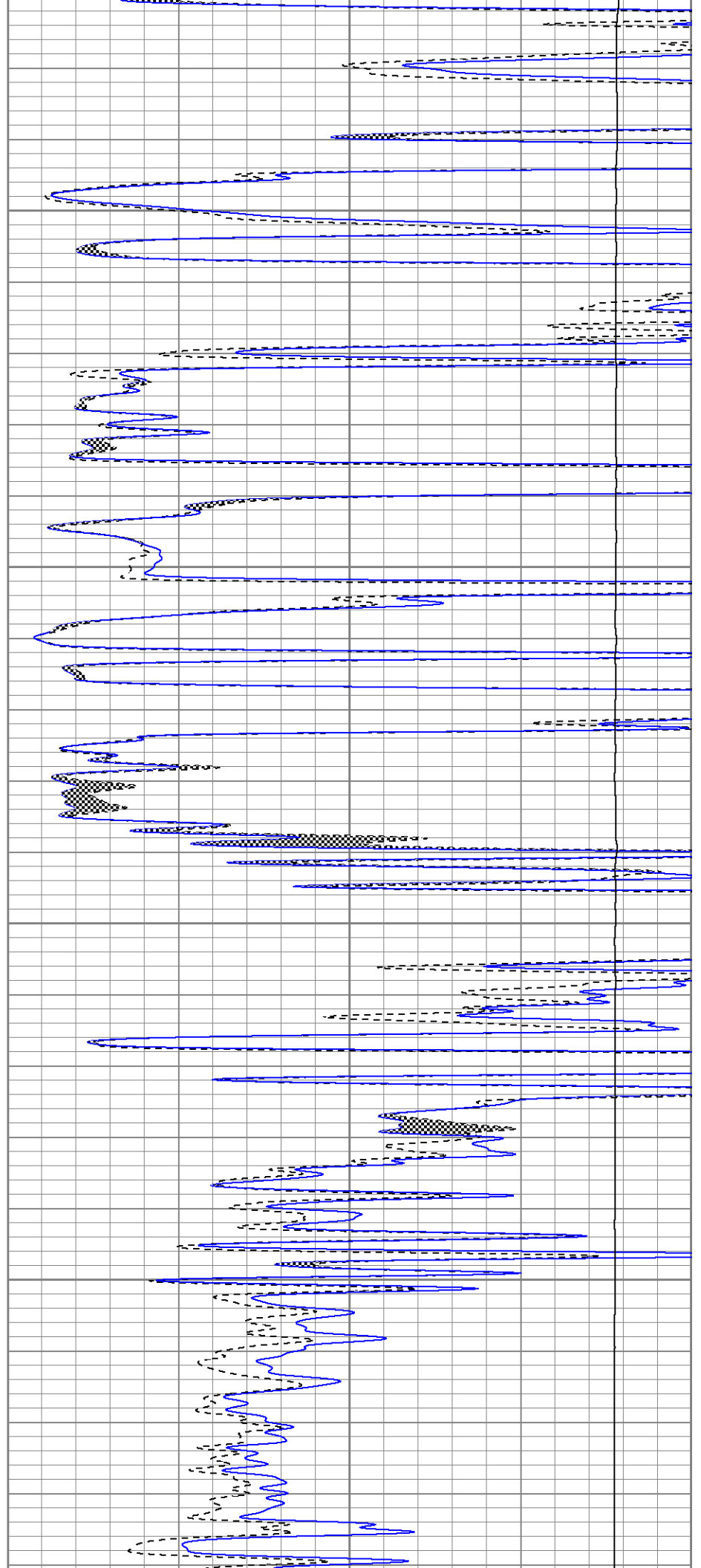


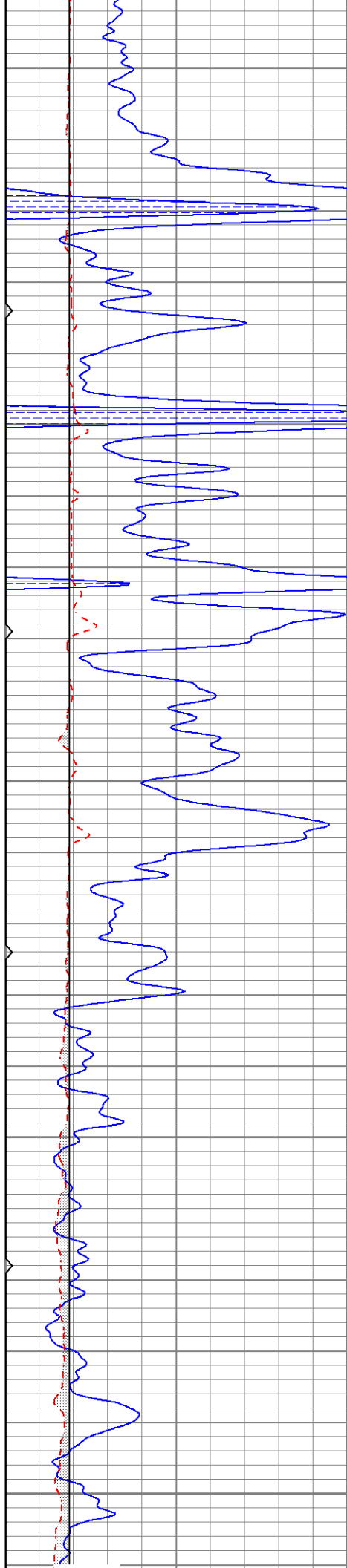
4050

4100

4150

4200





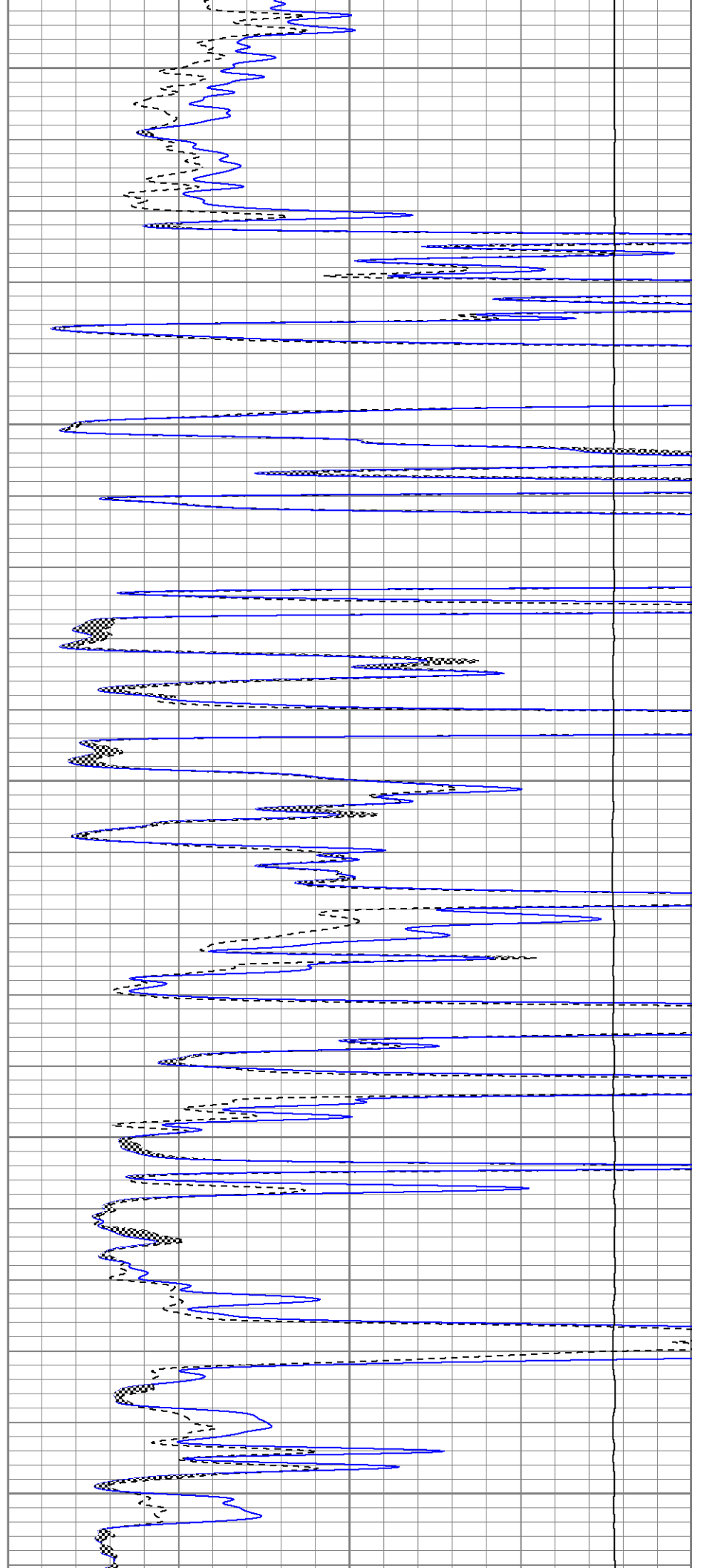
4250

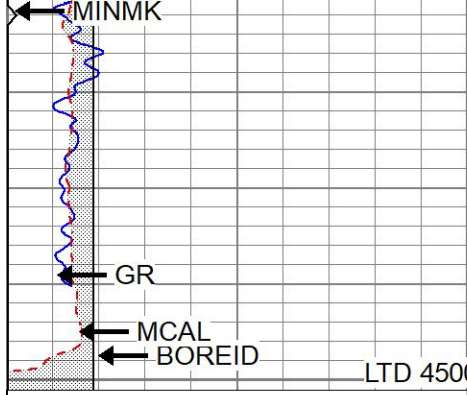
4300

4350

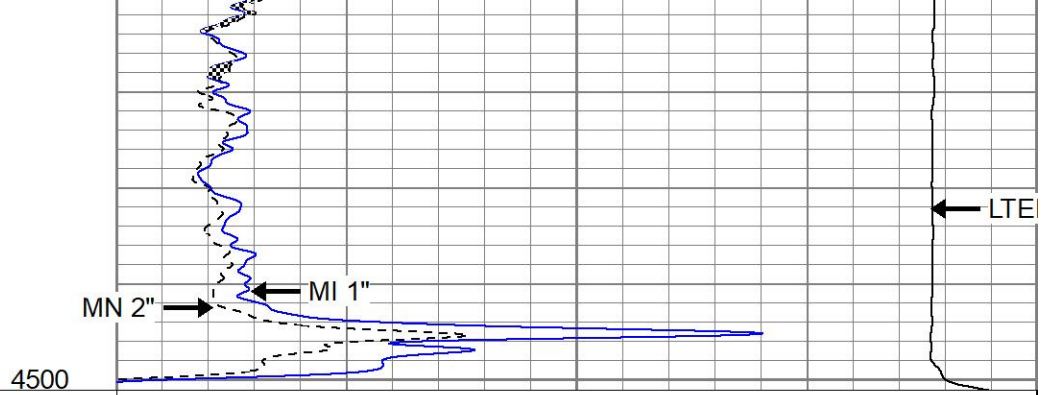
4400

4450





0	GR (GAPI)	150
6	MCAL (in)	16
6	BOREID (in)	16
0	MINMK	50



0	MN 2" (Ohm-m)	20
0	MI 1" (Ohm-m)	20
10000	LTEN (lb)	0

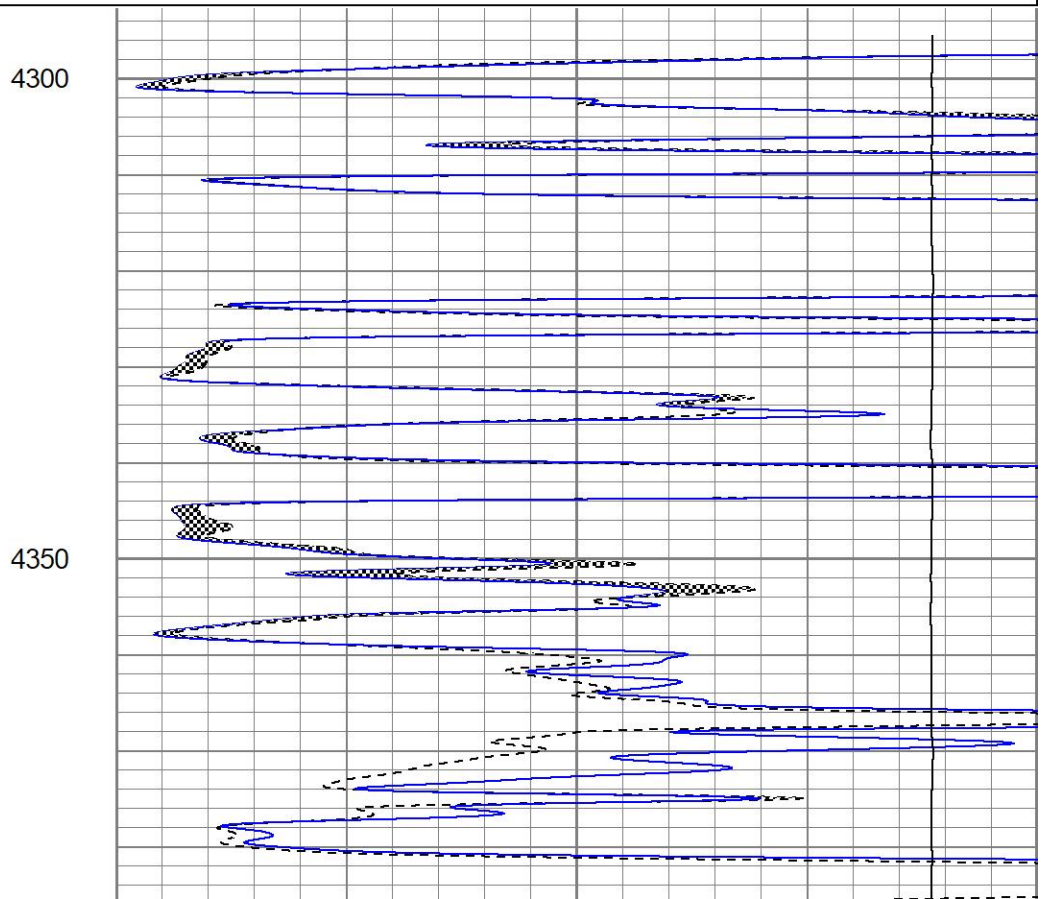
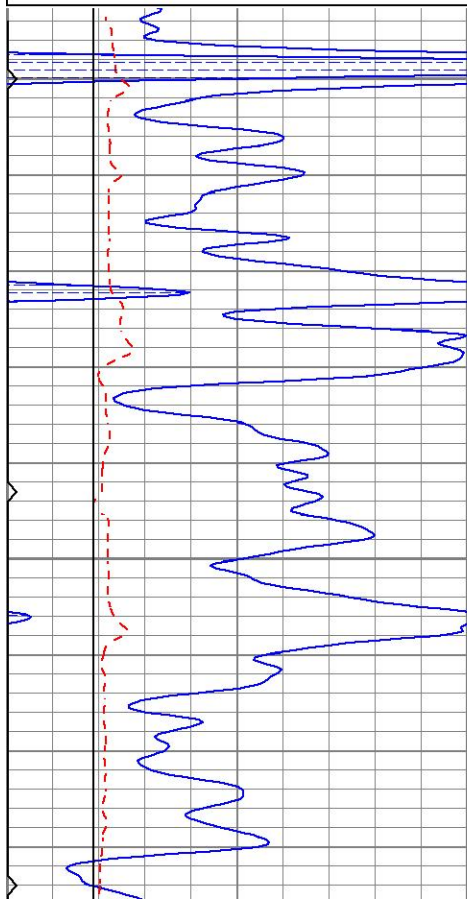


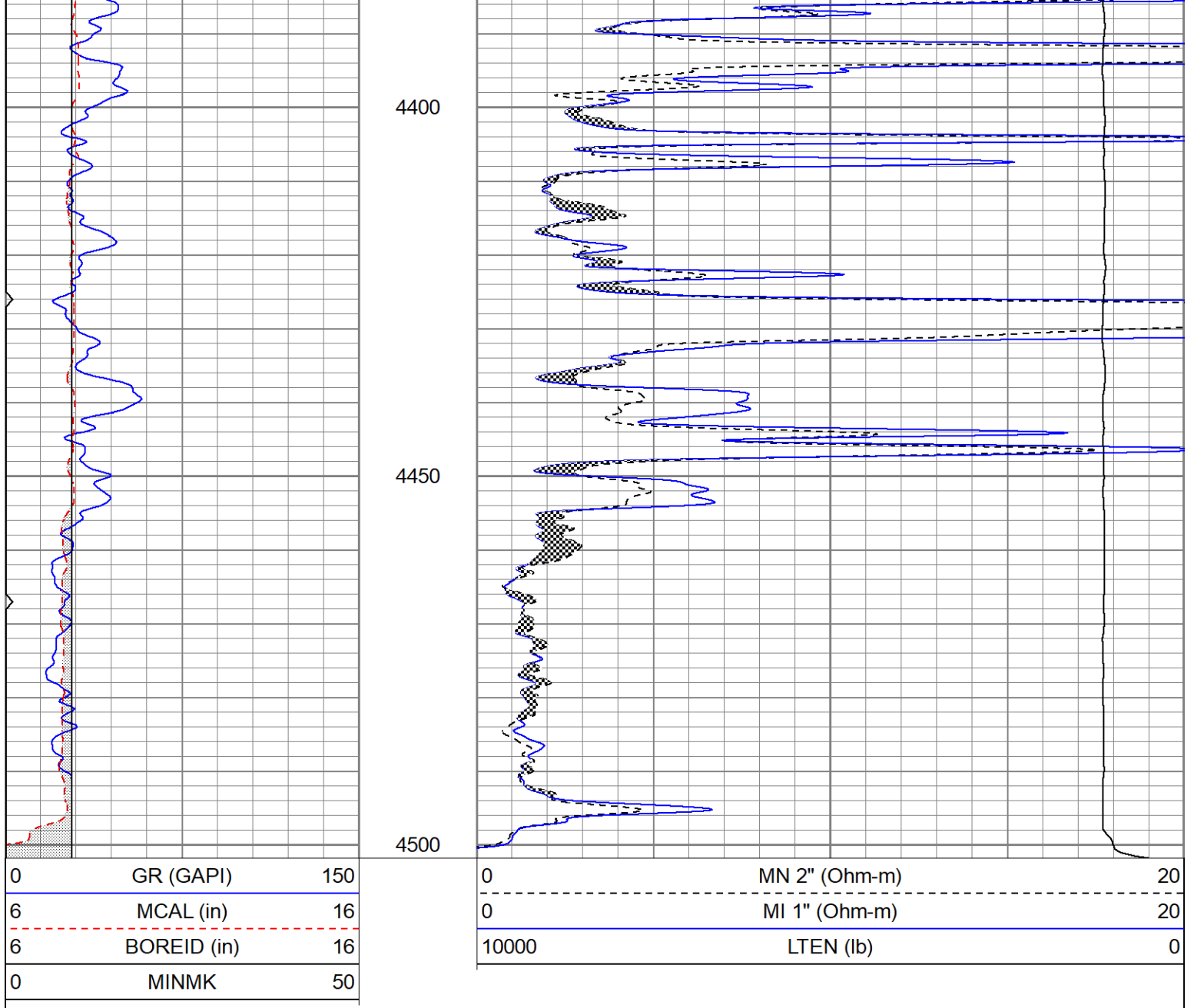
# REPEAT SECTION

Database File pplyineyes#1oh.db  
 Dataset Pathname pass4.1  
 Presentation Format kml  
 Dataset Creation Tue Sep 13 23:38:05 2022  
 Charted by Depth in Feet scaled 1:240

0	GR (GAPI)	150
6	MCAL (in)	16
6	BOREID (in)	16
0	MINMK	50

0	MN 2" (Ohm-m)	20
0	MI 1" (Ohm-m)	20
10000	LTEN (lb)	0





### Calibration Report

Database File pplyineyes#1oh.db  
 Dataset Pathname pass4.1  
 Dataset Creation Tue Sep 13 23:38:05 2022

### Microlog Calibration Report

Serial-Model: 012-Pengo  
 Performed: Tue Sep 13 23:24:21 2022

	Readings			References			Results	
	Zero	Cal		Zero	Cal		m	b
Normal	0.0232	0.1162	V	0.0000	10.0000	Ohm-m	107.5210	-2.4954
Inverse	0.0213	0.1390	V	0.0000	10.0000	Ohm-m	74.9132	-1.8062
Caliper	2.7578	4.6384	V	7.9000	14.0000	in	3.2437	-0.7453

### Gamma Ray Calibration Report

Serial Number: 2000  
 Tool Model: P2000  
 Performed: Sun May 6 10:04:13 2018

Calibrator Value:	1.0	GAPI
Background Reading:	0.0	cps
Calibrator Reading:	1.0	cps
Sensitivity:	0.8400	GAPI/cps