



**DENSITY
NEUTRON
LOG**

Company	PALOMINO PETROLEUM	
Well	LYIN' EYES #1	
Field	BASINGER	
County	TREGO	State KS
Location:	API # : 15 195 23148 2275' FSL & 690' FWL	
Permanent Datum	SEC 33 TWP 15S RGE 25W	Other Services DIL ML
Log Measured From	Ground Level KB 8' AGL	
Drilling Measured From	KB	
Elevation	2453	

Date	9/13/22
Run Number	One
Depth Driller	4500
Depth Logger	4500
Bottom Logged Interval	4480
Top Log Interval	3400
Casing Driller	8 5/8" @ 222
Casing Logger	222
Bit Size	7 7/8"
Type Fluid in Hole	Chemical
Density / Viscosity	9.2/57
pH / Fluid Loss	10.0/8.8
Source of Sample	Pit
Rm @ Meas. Temp	1.3@80degf
Rmf @ Meas. Temp	.98@80degf
Rmc @ Meas. Temp	1.56@80degf
Source of Rmf / Rmc	Calculated
Rm @ BHT	85@121degf
Time Circulation Stopped	6:30 P.M.
Time Logger on Bottom	9:30 PM
Maximum Recorded Temperature	121degf
Equipment Number	T605
Location	Hays, KS
Recorded By	GUS PFANENSTIEL
Witnessed By	KEATON JONES

<<< Fold Here >>>

All interpretations are opinions based on inferences from electrical or other measurements and we cannot and do not guarantee the accuracy or correctness of any interpretation, and we shall not, except in the case of gross or willful negligence on our part, be liable or responsible for any loss, costs, damages, or expenses incurred or sustained by anyone resulting from any interpretation made by any of our officers, agents or employees. These interpretations are also subject to our general terms and conditions set out in our current Price Schedule.

Comments

ARNOLD WEST TO H RD. 4 NORTH TO COUNTY LINE,
1 WEST, 1/2 NORTH, EAST INTO.

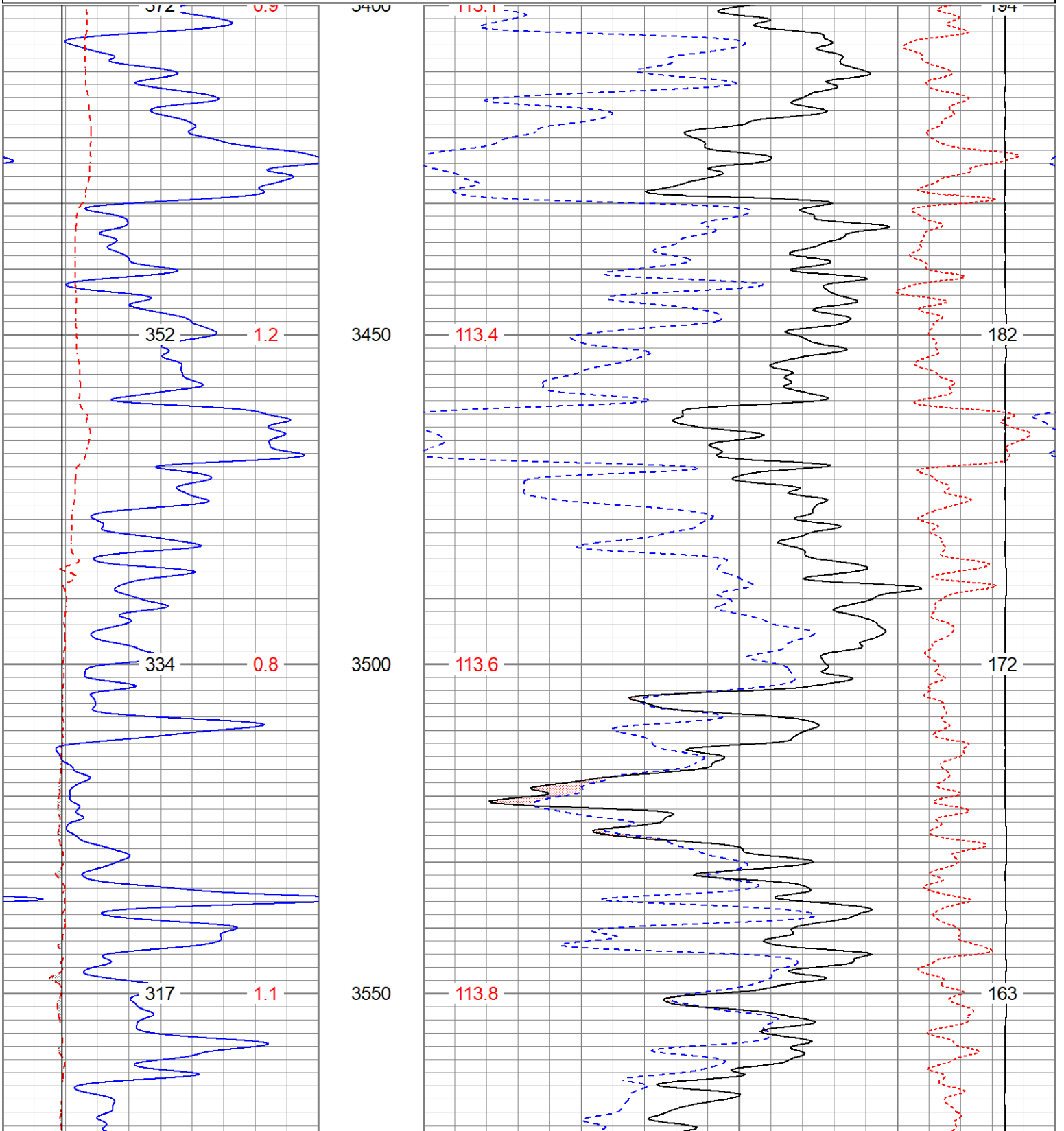
Thank You for using Gemini Wireline LLC
785-625-1182

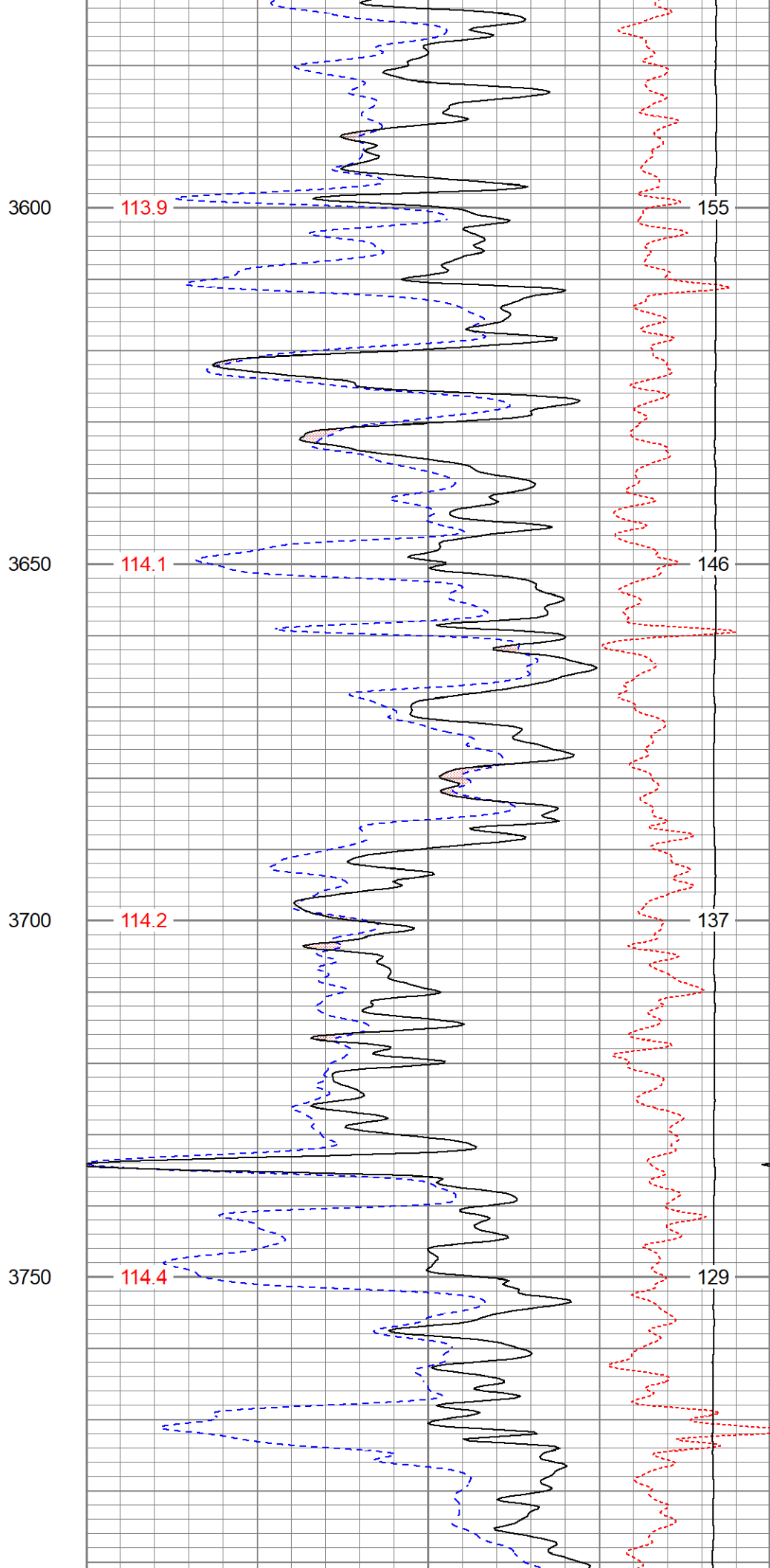
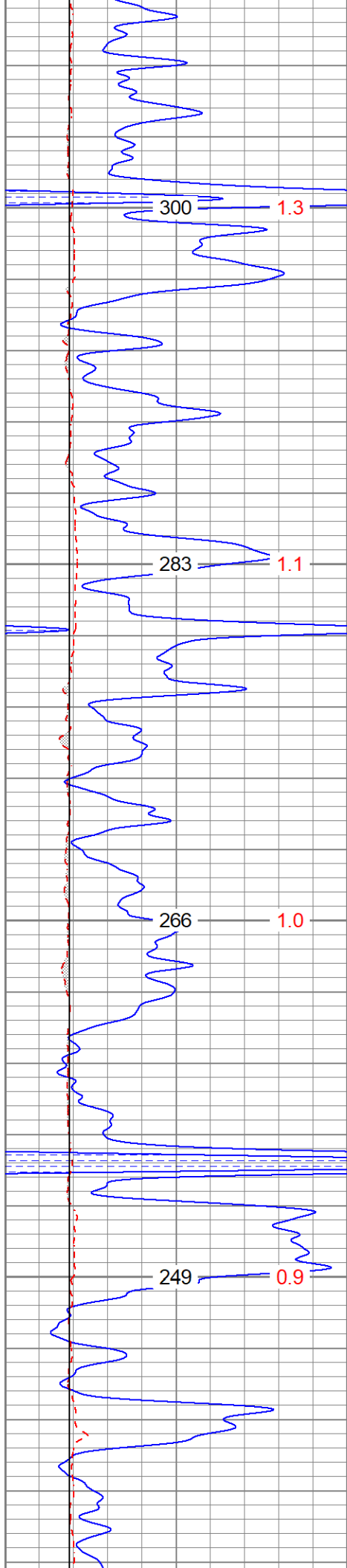


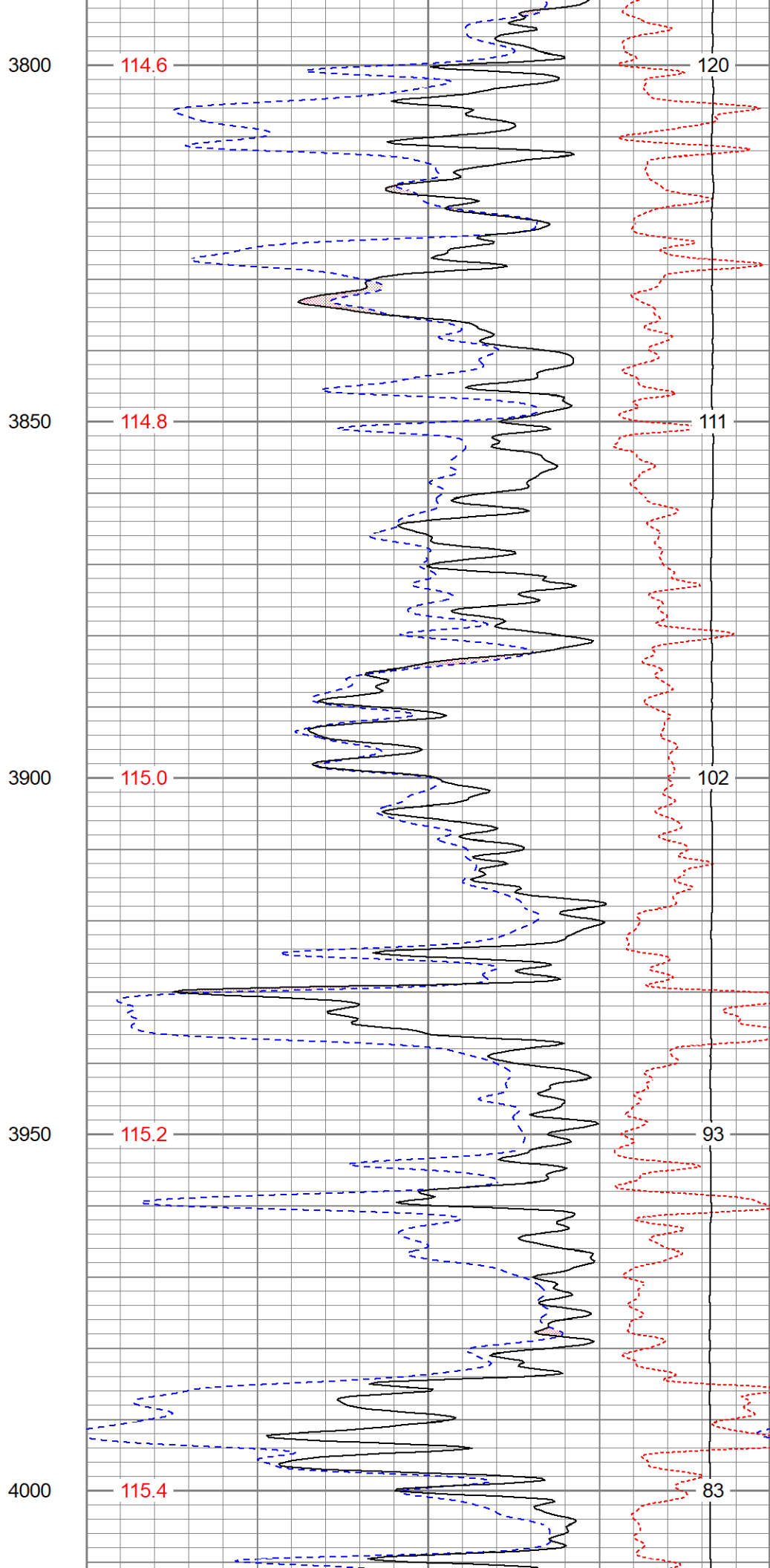
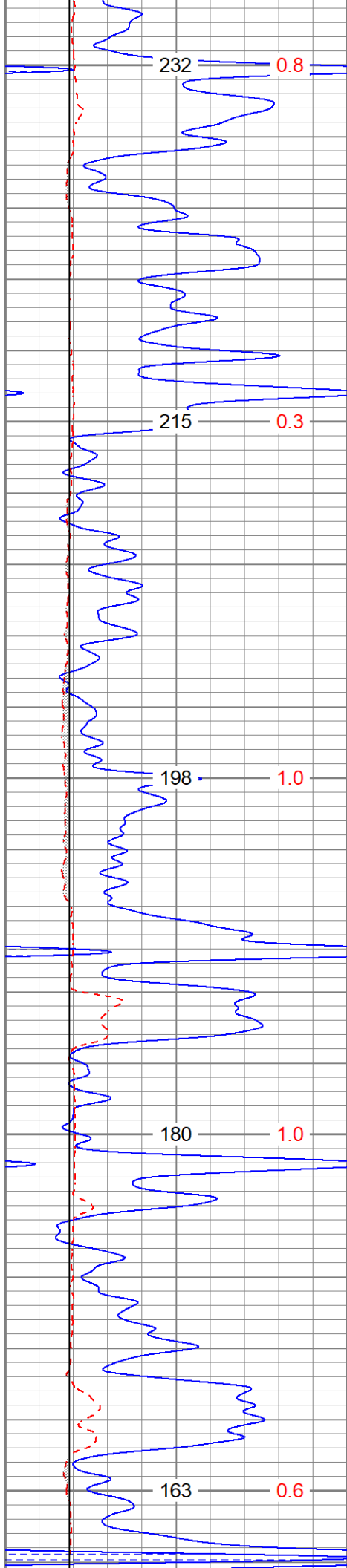
MAIN PASS

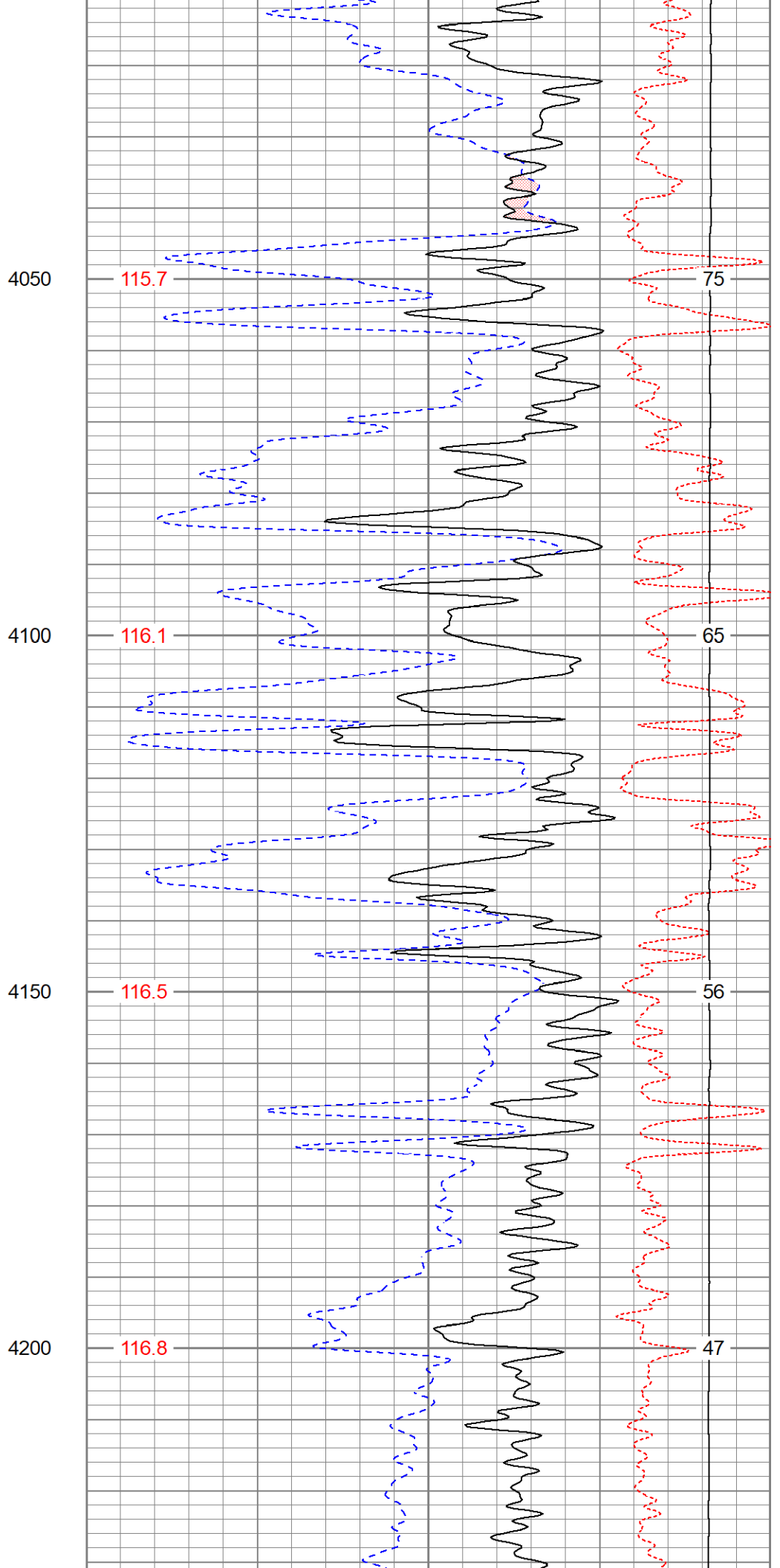
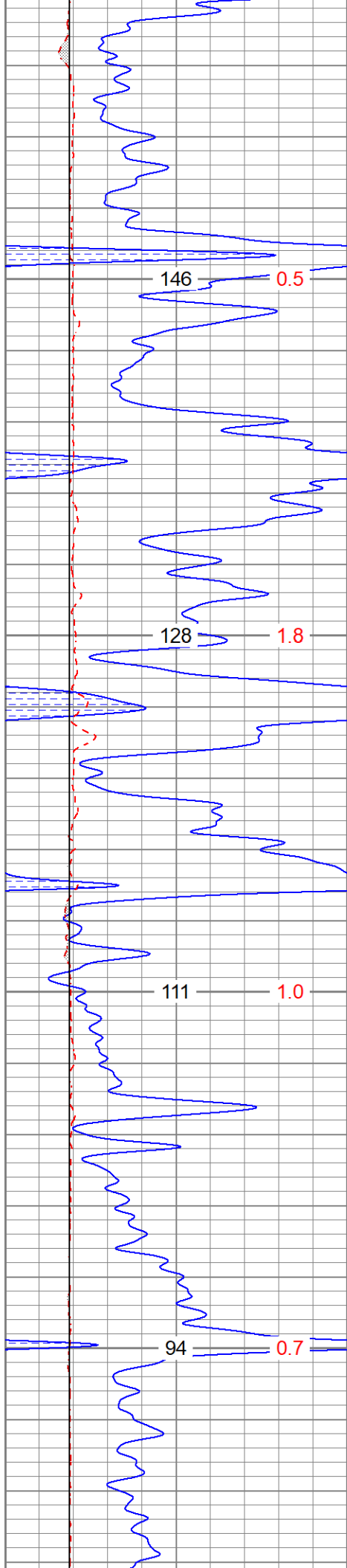
Database File pplyineyes#10h.db
 Dataset Pathname pass3.1
 Presentation Format digital_kcdnl
 Dataset Creation Tue Sep 13 23:16:08 2022
 Charted by Depth in Feet scaled 1:240

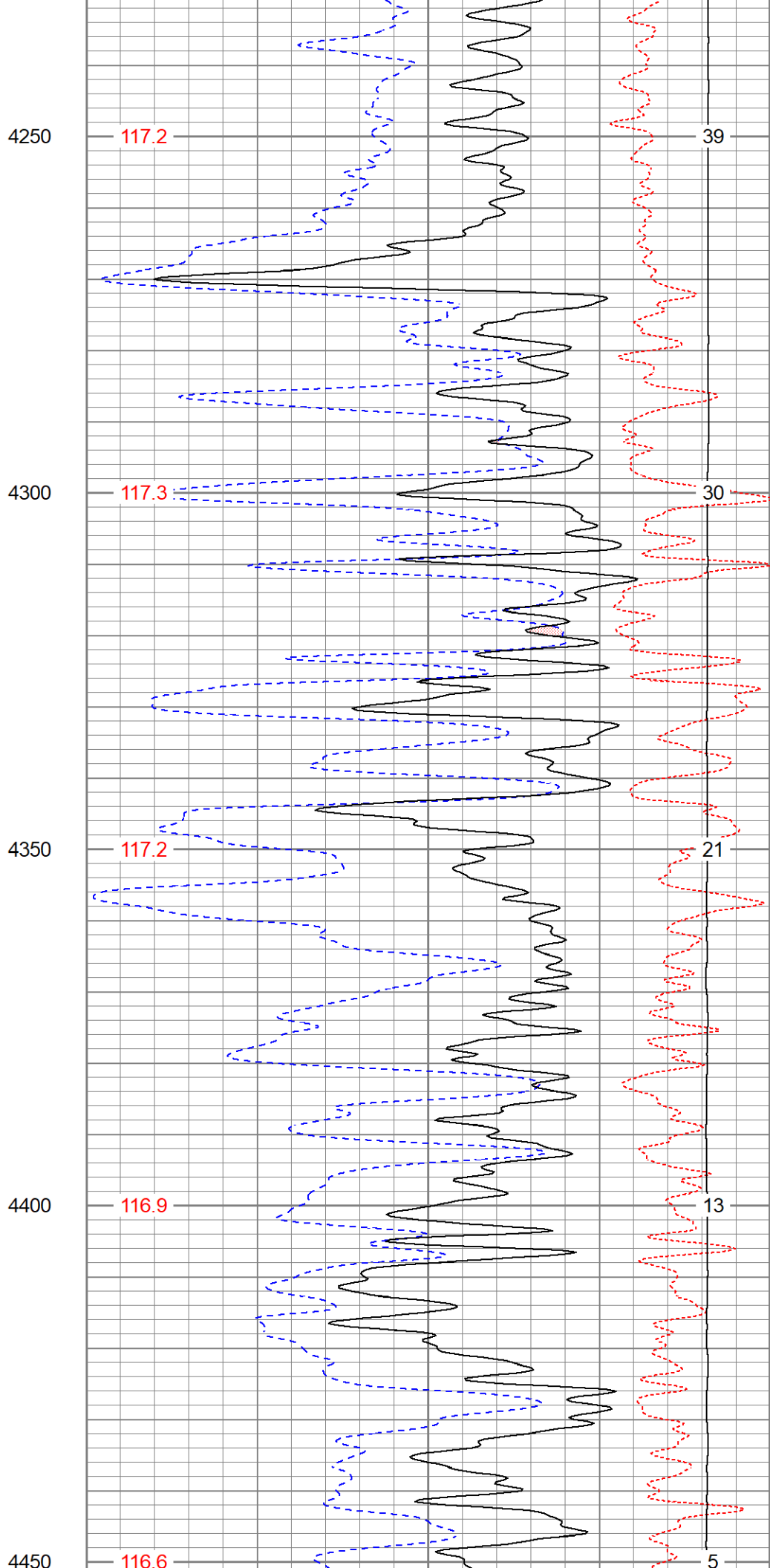
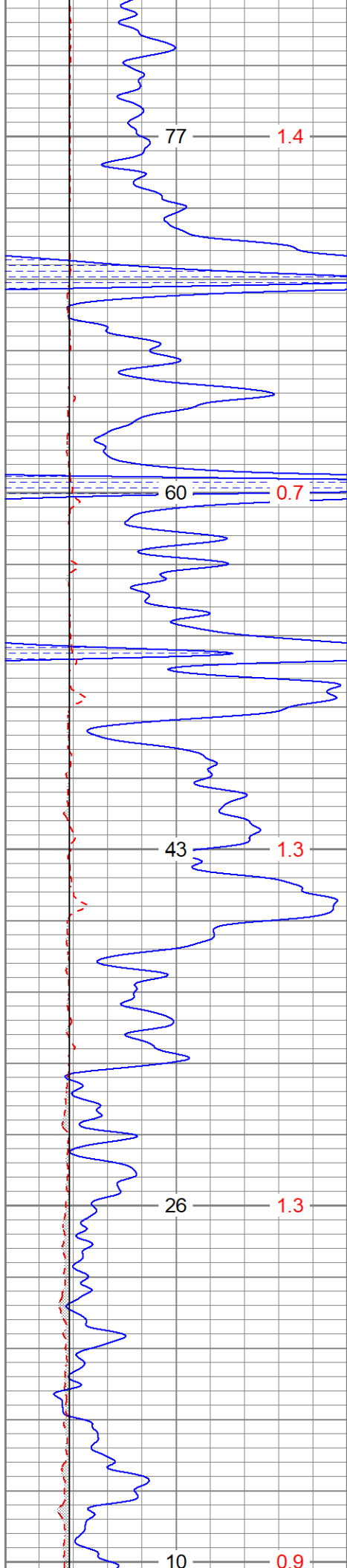
0	GR (GAPI)	150	30	NPOR (pu)	-10	
6	DCAL (in)	16	30	DPOR (pu)	-10	
6	BOREID (in)	16	70	DPOR (pu)	30	
	TBHV (ft3)	DEVI (deg)	TEMP (degF)	-0.25	RHOC (g/cc)	0.25
				8000	LTEN (lb)	0
						ABHV (ft3)

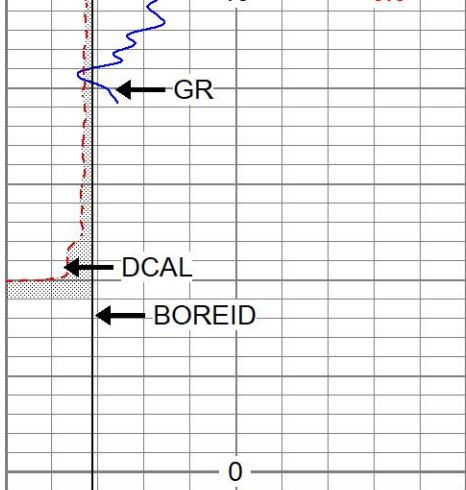




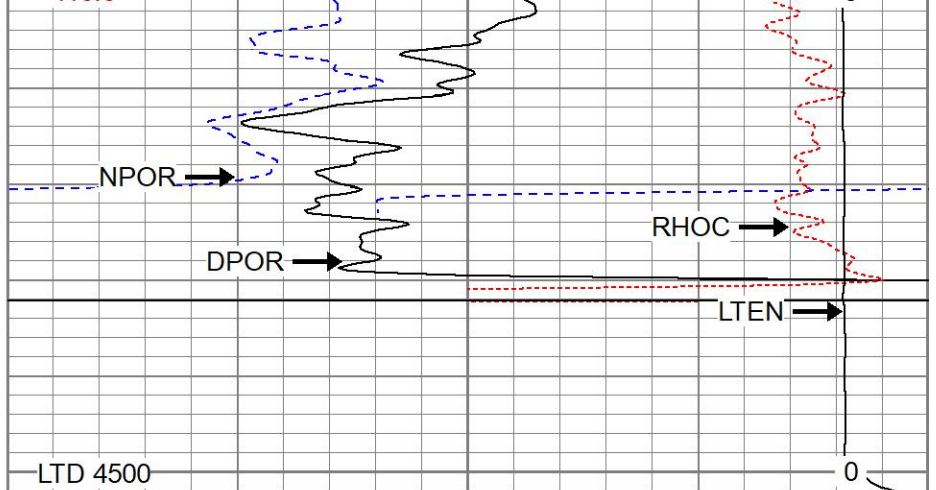








0	GR (GAPI)	150
6	DCAL (in)	16
6	BOREID (in)	16
	TBHV (ft3)	DEVI (deg)



30	NPOR (pu)	-10		
30	DPOR (pu)	-10		
70	DPOR (pu)	30		
	TEMP (degF)	-0.25	RHOC (g/cc)	0.25
		8000	LTEN (lb)	0

ABHV (ft3)



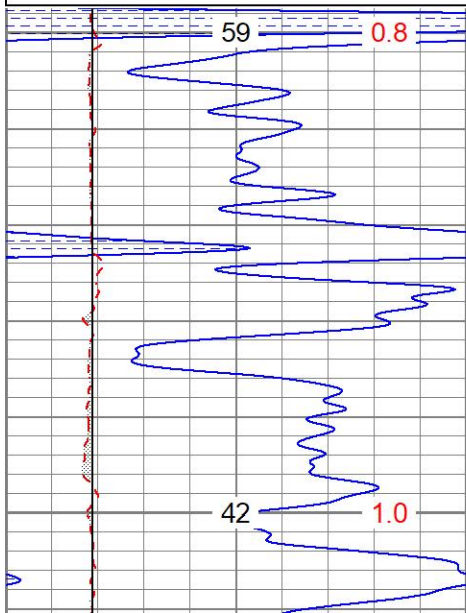
REPEAT SECTION

Database File pplyineyes#1oh.db
 Dataset Pathname pass2.1
 Presentation Format digital_kcdnl
 Dataset Creation Tue Sep 13 22:44:54 2022
 Charted by Depth in Feet scaled 1:240

0	GR (GAPI)	150
6	DCAL (in)	16
6	BOREID (in)	16
	TBHV (ft3)	DEVI (deg)

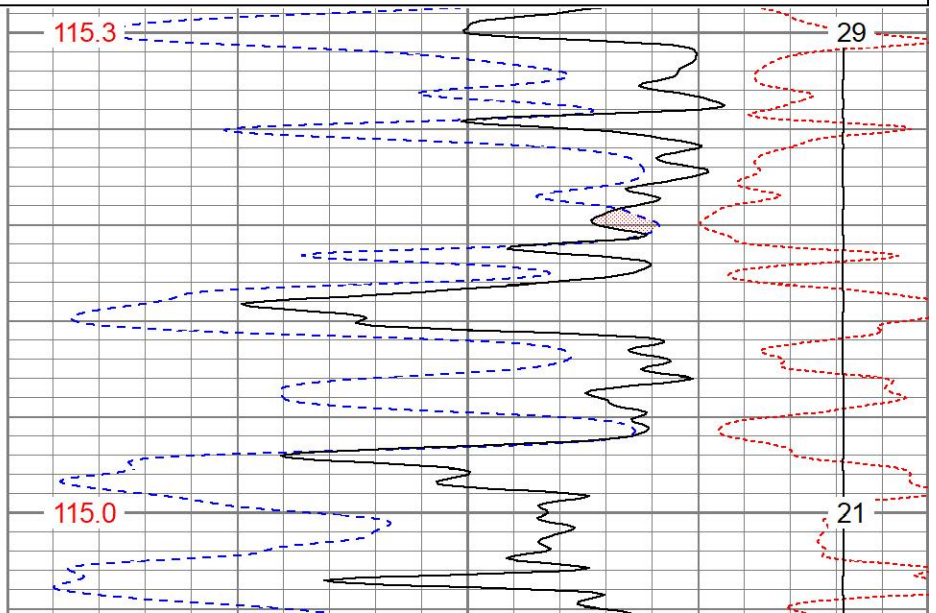
30	NPOR (pu)	-10		
30	DPOR (pu)	-10		
70	DPOR (pu)	30		
	TEMP (degF)	-0.25	RHOC (g/cc)	0.25
		8000	LTEN (lb)	0

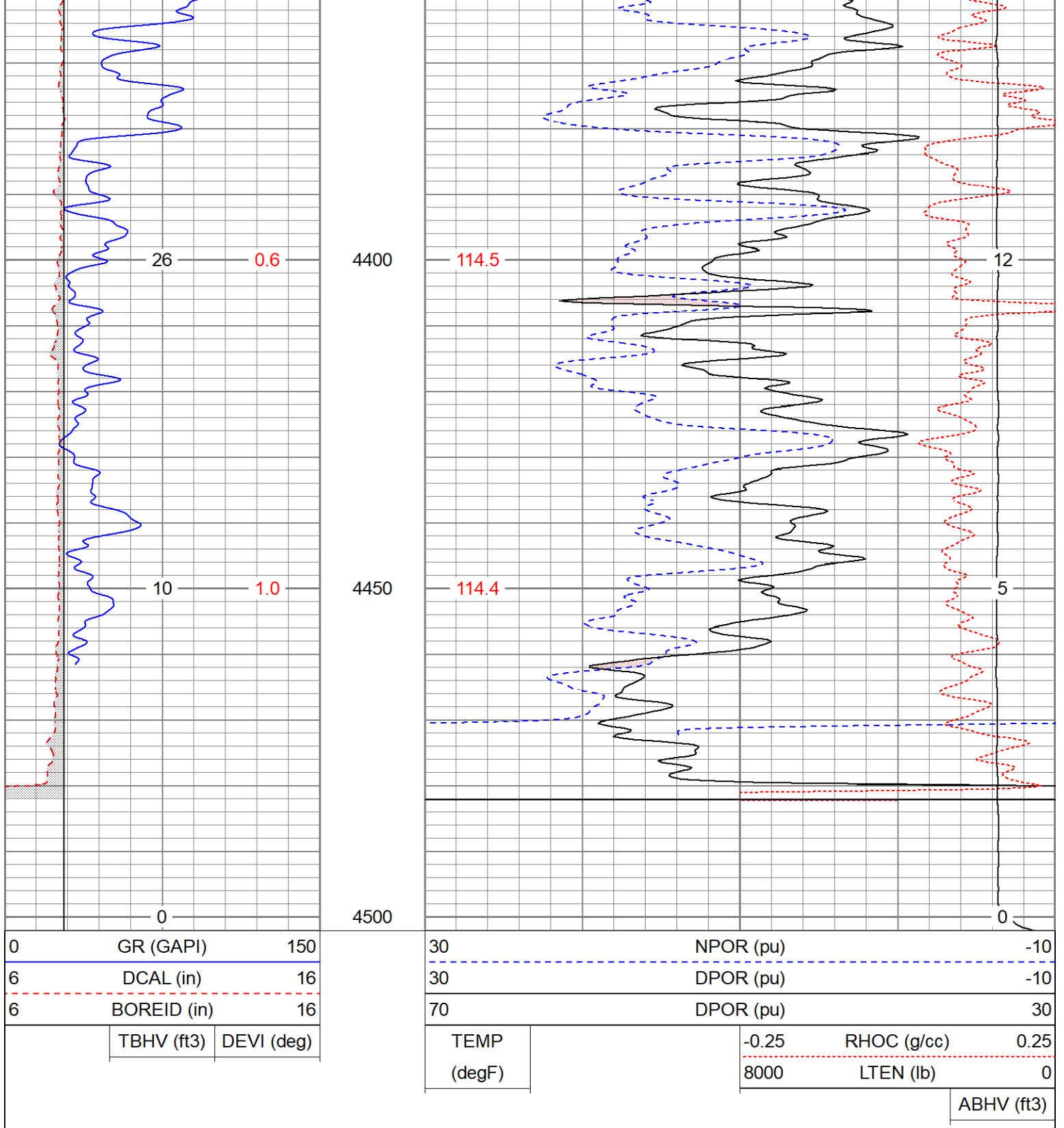
ABHV (ft3)



4300

4350





Calibration Report

Database File pplyineyes#1oh.db
 Dataset Pathname pass2.1
 Dataset Creation Tue Sep 13 22:44:54 2022

Dual Induction Calibration Report

Serial-Model: 1842-ADM
 Surface Cal Performed: Mon Sep 20 22:00:42 2021
 Downhole Cal Performed: Mon Sep 20 22:00:24 2021
 After Survey Verification Performed: Mon Sep 20 22:05:52 2021

Readings				References			Results	
Loop:	Air	Loop		Air	Loop		m	b
Deep	0.018	0.672	V	0.000	350.000	mmho/m	535.475	-9.896
Medium	0.003	0.769	V	0.000	400.000	mmho/m	522.607	-1.745
Internal:	Zero	Cal		Zero	Cal		m	b
Deep	0.018	0.672	V	0.000	350.000	mmho/m	535.240	-9.549
Medium	0.003	0.768	V	0.000	550.000	mmho/m	718.637	-2.088

Downhole Calibration

Readings				References			Results	
Internal:	Zero	Cal		Zero	Cal		m	b
Deep	-0.219	349.905	mmho/m	-0.343	349.810	mmho/m	1.000	-3.124
Medium	-0.118	399.722	mmho/m	-0.226	399.745	mmho/m	1.000	-3.108
Shallow	2.536	0.025	V	500.000	2.000	Ohm-m	165.330	-1.504

After Survey Verification

Readings				Targets			Results	
Internal:	Zero	Cal		Zero	Cal		m'	b'
Deep	0.000	0.000	mmho/m	-0.219	349.905	mmho/m	1.000	-3.124
Medium	0.000	0.000	mmho/m	-0.118	399.722	mmho/m	1.000	-3.108
Shallow	0.000	0.000	Ohm-m	500.000	2.000	Ohm-m	1.000	0.000

Admyr Lithodensity Calibration Report

Serial-Model: 1C-C
 Source: Blue2
 Master Calibration Performed: Tue Aug 30 10:20:37 2022

Master Calibration

	Density		Far Detector	Near Detector	
Magnesium	1.670	g/cc	6362.49	3546.71	cps
Aluminium	2.640	g/cc	1733.54	2362.69	cps
Aluminium+Sleeve	2.617	g/cc	1657.01	2197.69	cps
Spine Angle = 72.65			Density/Spine Ratio = 0.712		
	PE		NLITH	NHARD	
Magnesium	1.900	barn	5031.16	2670.10	cps
Aluminium	2.400	barn	925.14	1260.20	cps
Aluminium+Sleeve	5.000	barn	816.33	1216.63	cps
M = 0.191			B = 0.171	R = 0.787	
	Size		Reading		
Small Ring	8.00	in	8.61	V	
Large Ring	14.30	in	12.40	V	

Neutron Calibration Report

Serial Number: AD5139
 Tool Model: ADMY5139
 Performed: (Not Performed)

Calibrator Value:	1	NAPI
Calibrator Reading:	1	cps
Sensitivity:	1	NAPI/cps

Temperature Calibration Report

Serial Number:	WithMC			
Tool Model:	WMC			
Performed:	Fri Apr 19 12:15:04 2019			
	Reference		Reading	
Low Reference:	0.00 degF		0.00 degF	
High Reference:	1.00 degF		1.00 degF	
Gain:	1.00			
Offset:	0.00			
Delta Spacing	1			

Inclinometer Calibration Report

Performed:	Wed May 5 19:20:48 2021				
	Low Read.	High Read.	Low Ref.	High Ref.	
X Accelerometer	205.00	1843.00	-1.00	1.00	gee
Y Accelerometer	205.00	1843.00	-1.00	1.00	gee
Z Accelerometer					gee

Gamma Ray Calibration Report

Serial Number:	WithMC	
Tool Model:	WMC	
Performed:	Wed Jun 15 11:53:49 2022	
Calibrator Value:	1.0	GAPI
Background Reading:	0.0	cps
Calibrator Reading:	1.0	cps
Sensitivity:	1.1000	GAPI/cps