

MICRO LOG



Company I.A. OPERATING, INC.
 Well ZERFAS #30-2
 Field ZERFAS
 County ELLIS State KANSAS

Location: 1626' FSL & 1384' FEL
 SE - SE - NW - SE
 API #: 15-051-27042-0000
 SEC 30 TWP 11S RGE 19W
 Permanent Datum GROUND LEVEL Elevation 2135
 Log Measured From KELLY BUSHING 8' A.G.L.
 Drilling Measured From KELLY BUSHING
 Other Services CDL/CNL/PE DIL
 Elevation K.B. 2143 D.F. 2141 G.L. 2135

Date	8/27/22	Run Number	TWO
Depth Driller	3703	Depth Logger	3706
Bottom Logged Interval	3704	Top Log Interval	3000
Casing Driller	8 5/8"@221'	Casing Logger	221
Bit Size	7 7/8"	Type Fluid in Hole	CHEMICAL MUD
Density / Viscosity	9.2/51	PH / Fluid Loss	10.0/6.0
Source of Sample	FLOWLINE	Rm @ Meas. Temp	1.40@75F
Rmf @ Meas. Temp	1.05@75F	Rmc @ Meas. Temp	1.68@75F
Source of Rmf / Rmc	MEASUREMENT	Rm @ BHT	.929@113F
Time Circulation Stopped	9.5 HOURS	Time Logger on Bottom	3:30 A.M.
Maximum Recorded Temperature	113F	Equipment Number	922339
Location	HAYS, KANSAS	Recorded By	JEFF LUEBBERS
Witnessed By	JEFF LAWLER		

<<< Fold Here >>>

All interpretations are opinions based on inferences from electrical or other measurements and we cannot and do not guarantee the accuracy or correctness of any interpretation, and we shall not, except in the case of gross or willful negligence on our part, be liable or responsible for any loss, costs, damages, or expenses incurred or sustained by anyone resulting from any interpretation made by any of our officers, agents or employees. These interpretations are also subject to our general terms and conditions set out in our current Price Schedule.

15-051-27042-0000 Comments

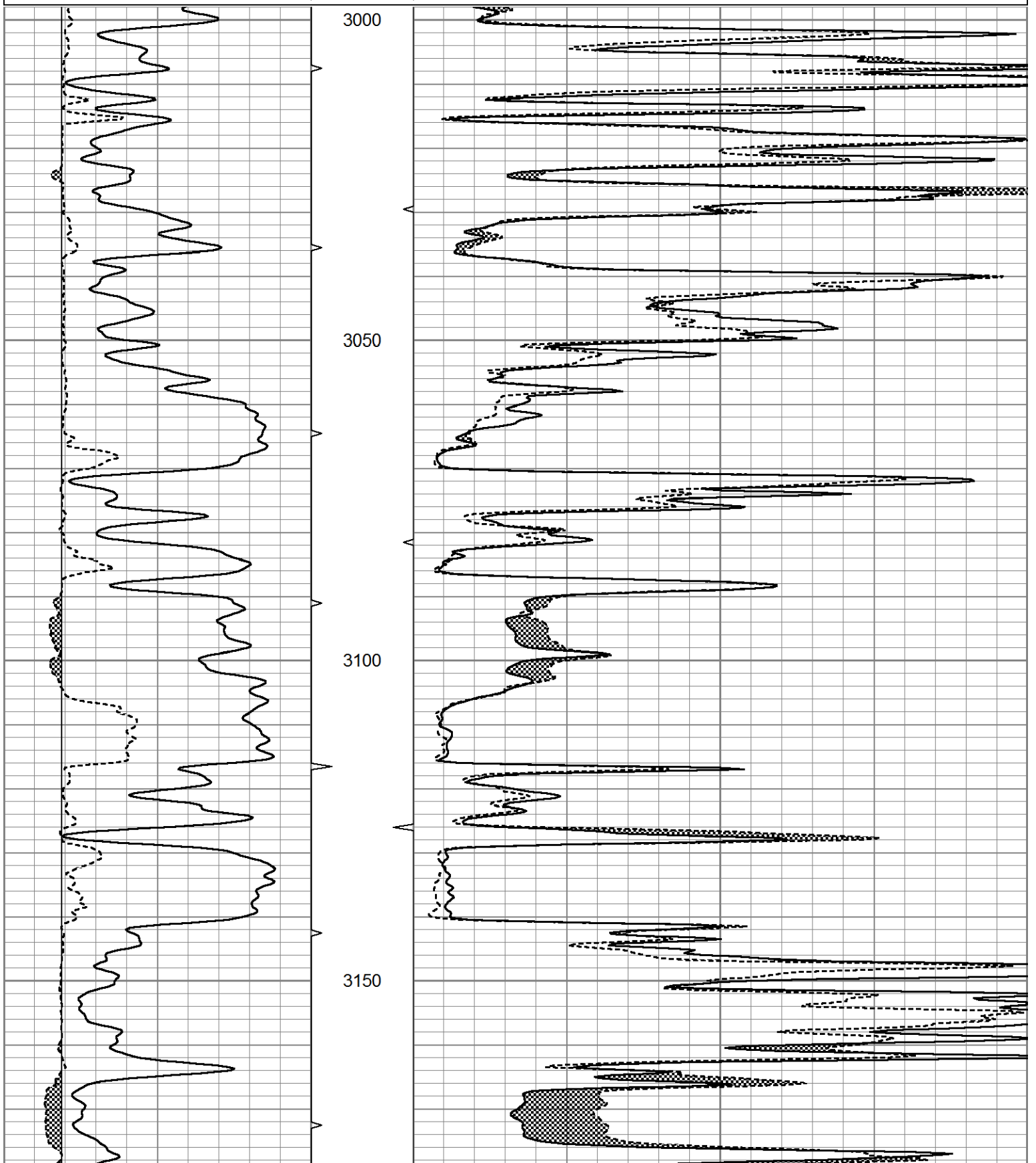
THANK YOU FOR USING ELI WIRELINE HAYS, KANSAS (785) 628-6395
 DIRECTIONS
 (BUCKEYE RD. & 170TH AVE.), 4N. W. INTO

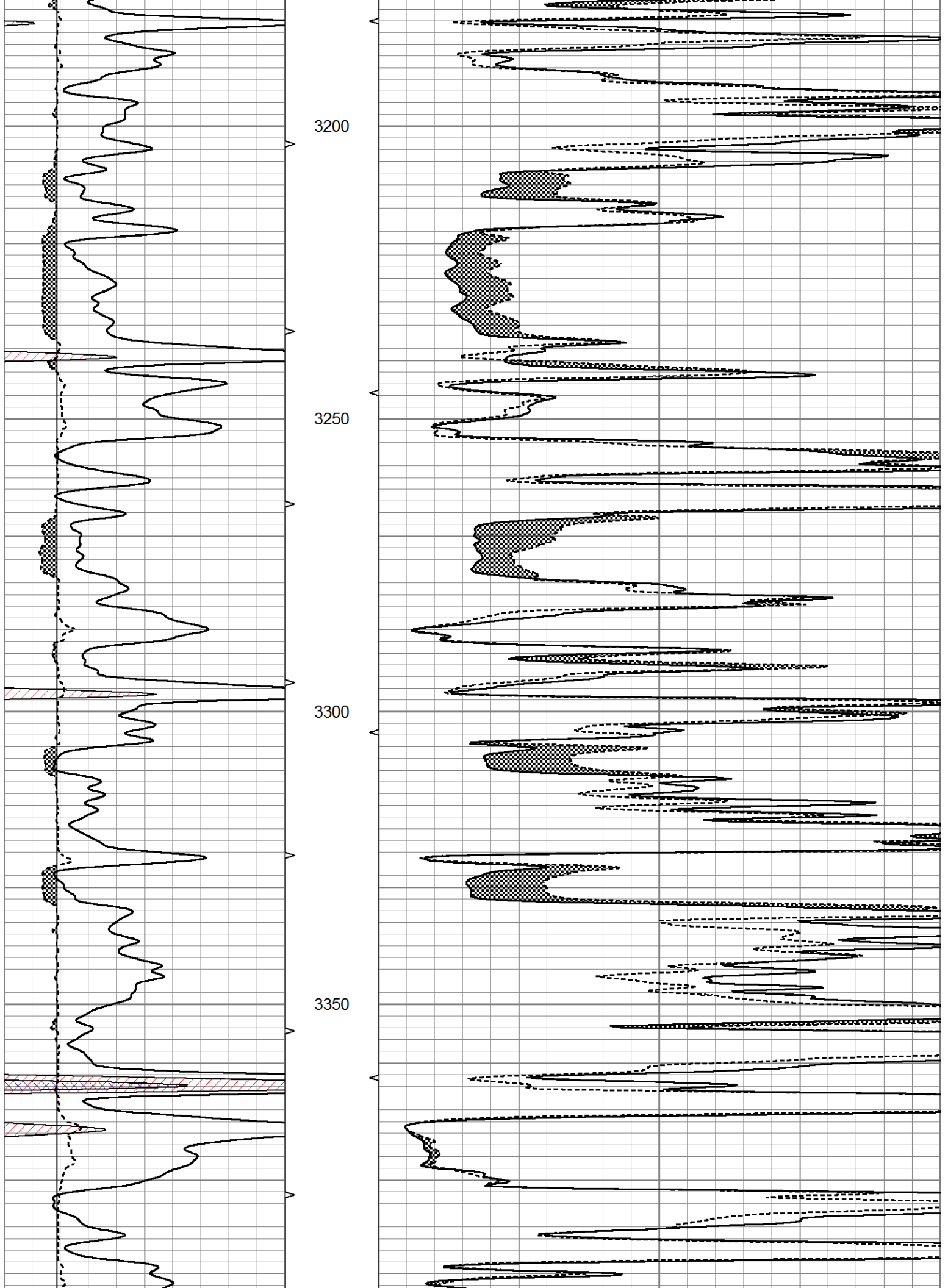


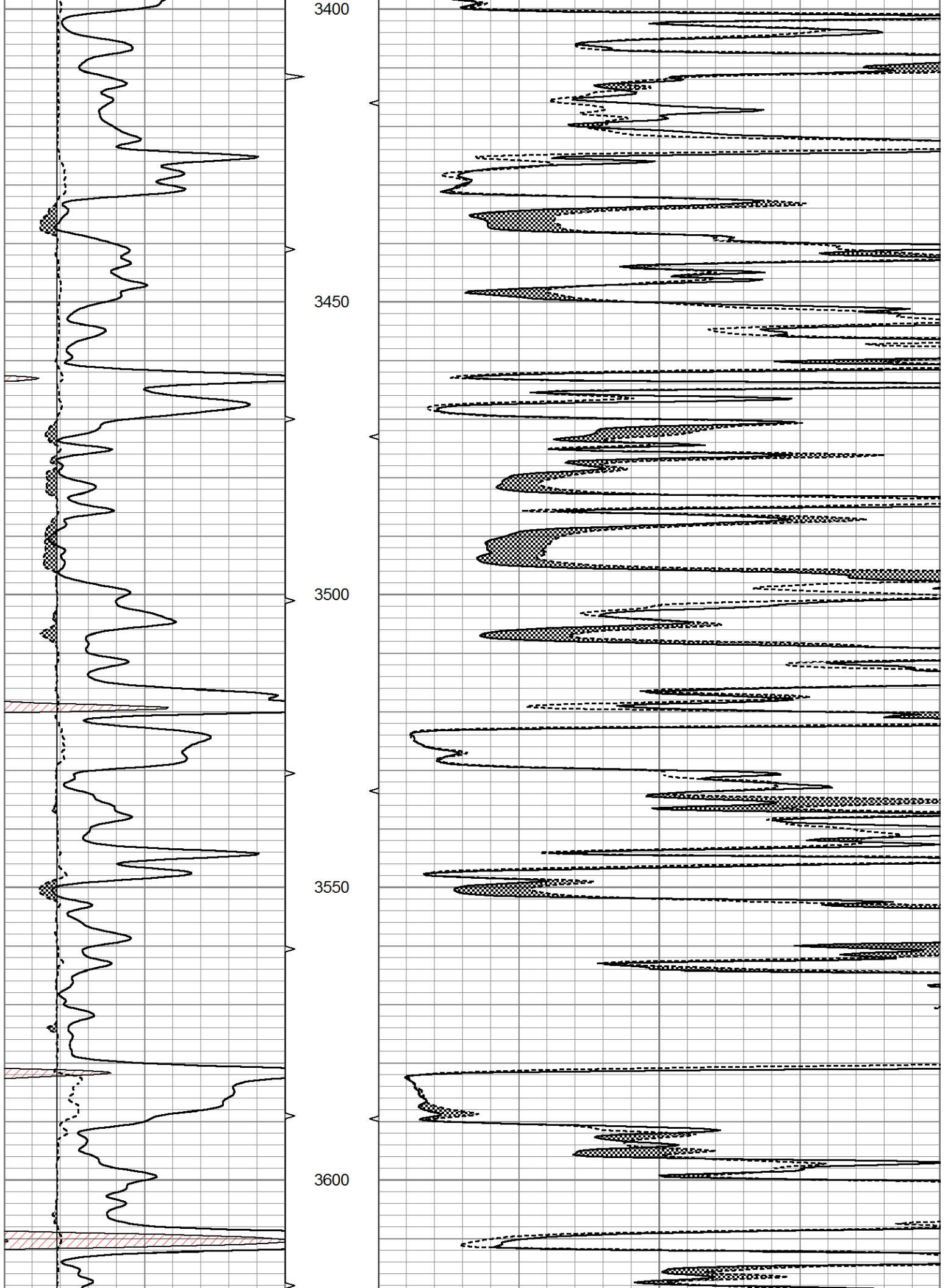
MAIN SECTION

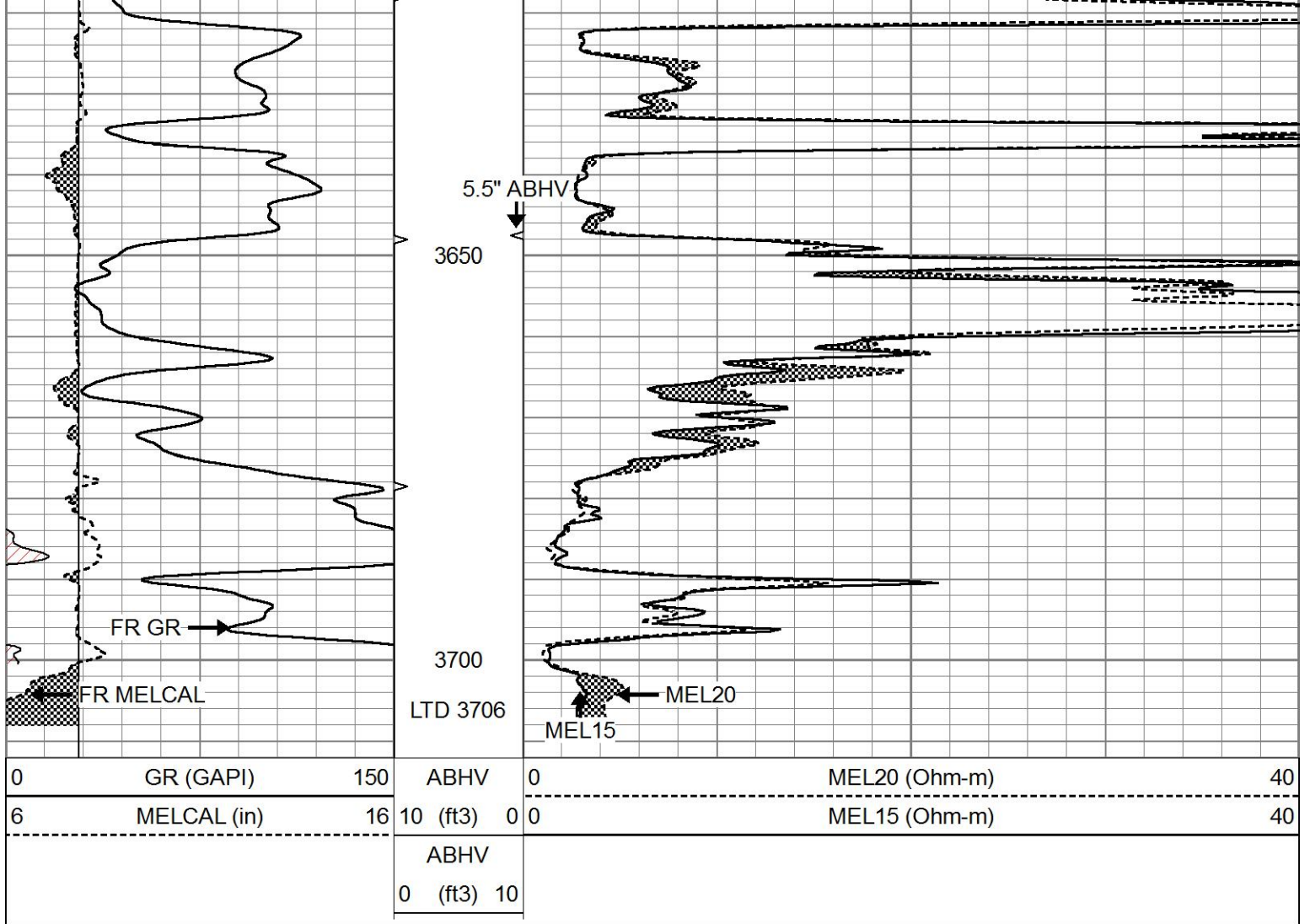
Database File 6913pe.db
 Dataset Pathname pass7.3
 Presentation Format micro
 Dataset Creation Sat Aug 27 03:53:25 2022
 Charted by Depth in Feet scaled 1:240

0	GR (GAPI)	150	ABHV	0	MEL20 (Ohm-m)	40
6	MELCAL (in)	16	10 (ft3)	0	MEL15 (Ohm-m)	40
			ABHV			
			0 (ft3)	10		





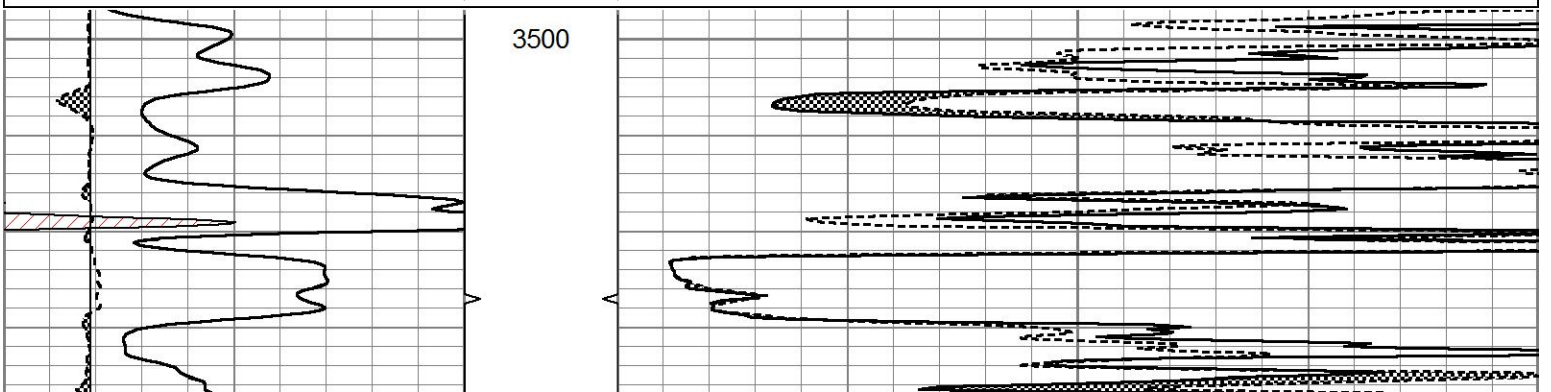


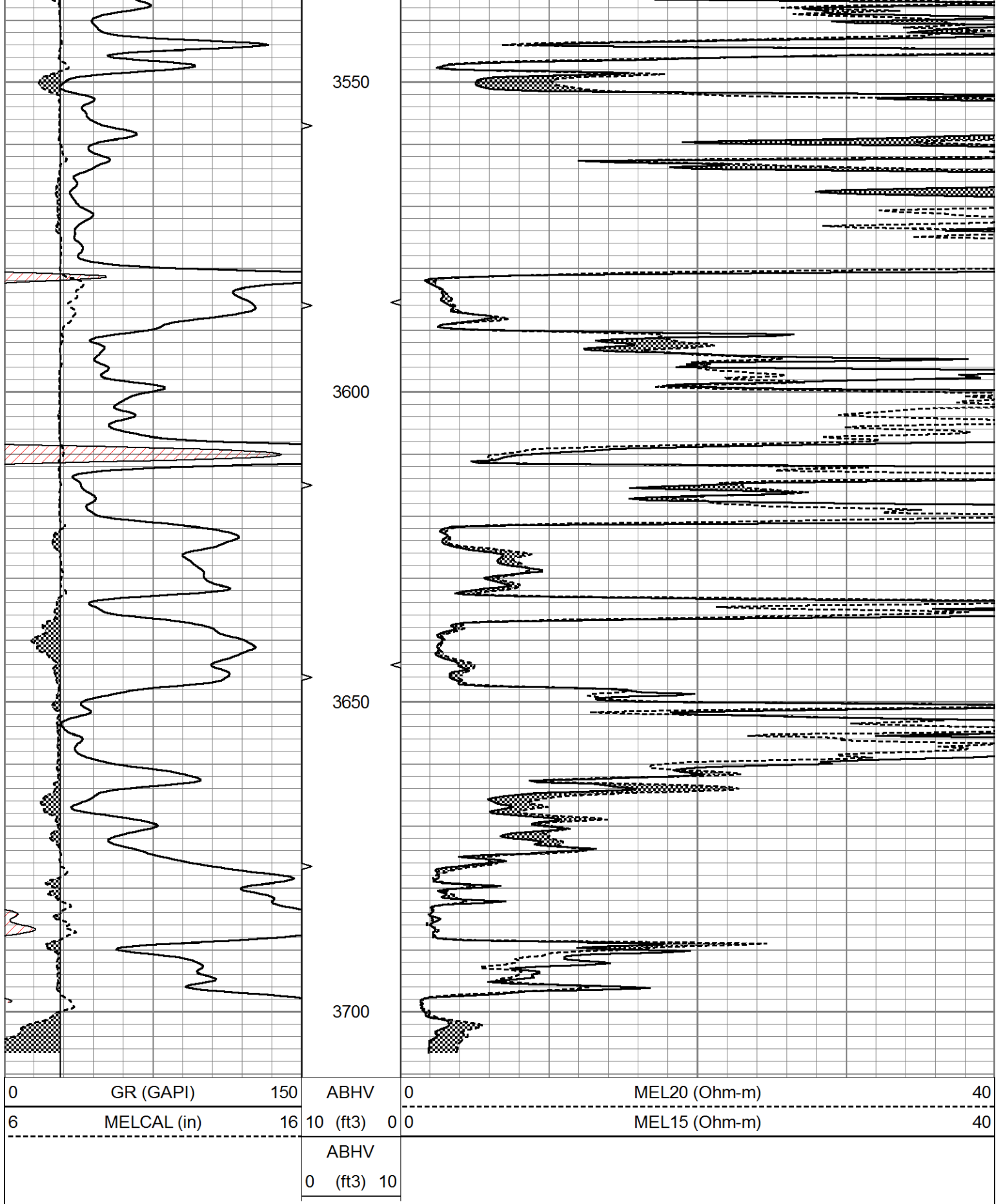


REPEAT SECTION

Database File 6913pe.db
 Dataset Pathname pass6.2
 Presentation Format micro
 Dataset Creation Sat Aug 27 03:26:11 2022
 Charted by Depth in Feet scaled 1:240

0	GR (GAPI)	150	ABHV	0	MEL20 (Ohm-m)	40
6	MELCAL (in)	16	10 (ft3)	0	MEL15 (Ohm-m)	40
			ABHV			
			0 (ft3)	10		





Calibration Report

Database File 6913pe.db
 Dataset Pathname pass7.3
 Dataset Creation Sat Aug 27 03:53:25 2022

MIRCO Calibration Report

Serial Number:	070910	
Tool Model:	ProbeN	
Performed:	Fri Aug 26 22:09:12 2022	
Caliper Calibration:	Gain=4.651	Offset=0.651
References	Low Cal	High Cal
Readings	8.000	16.000
	1.580	3.300
1.5" Calibration:	Gain=38.000	Offset=0.000
References	Low Cal	High Cal
Readings	0.000	20.000
	0.000	1.216
2" Calibration:	Gain=70.000	Offset=-1.300
References	Low Cal	High Cal
Readings	0.000	20.000
	0.002	1.053
Gamma Ray Calibration Report		
Serial Number:	070559	
Tool Model:	OPEN_GR	
Performed:	Sat Aug 27 03:25:27 2022	
Calibrator Value:	1.0	GAPI
Background Reading:	0.0	cps
Calibrator Reading:	1.0	cps
Sensitivity:	0.3200	GAPI/cps