



MIDWEST WIRELINE

# MICRORESISTIVITY LOG

Company Castle Resources Inc  
 Well Shields 1  
 Field Lindsborg  
 County McPherson  
 State Kansas

Company Castle Resources Inc  
 Well Shields 1  
 Field Lindsborg  
 County McPherson State Kansas

Location: API #: 15-113-21413-00-00  
 330 FNL & 2310 FEL  
 SEC 19 TWP 17S RGE 3W  
 Permanent Datum Ground Level Elevation 1336  
 Log Measured From Kelly Bushing  
 Drilling Measured From Kelly Bushing  
 Other Services  
 CNL/CDL  
 DIL  
 Elevation  
 K.B. 1341  
 D.F.  
 G.L. 1336

Date	8/20/2024
Run Number	One
Depth Driller	3570
Depth Logger	3569
Bottom Logged Interval	3568
Top Log Interval	2800
Casing Driller	8.625 @ 360
Casing Logger	338
Bit Size	7.875
Type Fluid in Hole	Chemical
Salinity, ppm CL	4000
Density / Viscosity	9.3 44
pH / Fluid Loss	9.0 14.4
Source of Sample	FLOWLINE
Rm @ Meas. Temp	.80 @ 76
Rmt @ Meas. Temp	.60 @ 76
Rmc @ Meas. Temp	1.08 @ 76
Source of Rmf / Rmc	CHARTS
Rm @ BHT	.54 @ 112
Operating Rig Time	2 Hours
Max Rec. Temp. F	112
Equipment Number	110
Location	HAYS
Recorded By	J. Henrickson
Witnessed By	Jerry Green

<<< Fold Here >>>

All interpretations are opinions based on inferences from electrical or other measurements and Midwest Wireline LLC cannot and does not guarantee the accuracy or correctness of any interpretation, and Midwest Wireline LLC will not be liable or responsible for any loss, costs, damages, or expenses incurred or sustained by anyone resulting from any interpretation made by any of our officers, agents or employees.

### Comments

N/A DENOTES NOT AVAILABLE OR NON-APPLICABLE.

Lindsborg Kansas  
 1 East on Hwy 4 to Buffalo Trail, 1/2 South,  
 West and North Into

Log Measured From: Kelly Bushing 5 Ft. Above Permanent Datum

THANK YOU FOR USING MIDWEST WIRELINE LLC  
 785-625-3858

### Your Midwest Wireline Crew

Engineer: J. Henrickson  
 Operator:  
 Operator:  
 Operator:

### This Log Record Was Witnessed By

Primary Witness: Jerry Green  
 Secondary Witness:  
 Secondary Witness:  
 Secondary Witness:

# Log Variables

DatabaseC:\ProgramData\Warrior\Data\castle\_shields\_1.db  
 Dataset field/well/stackml/pass3.1/\_vars\_

## Top - Bottom

A	BOREID in	BOTTEMP degF	CASEOD in	CASETHCK in	FLUIDDEN g/cc	M	MATRXDEN g/cc
1	7.875	112	5.5	0	1	2	2.71
NPORSEL	PERFS	SNDERR mmho/m	SNDERRM mmho/m	SPSHIFT mV	SRFTEMP degF	SZCOR	TDEPTH ft
Limestone	No	6	2	116	73	Off	3570

Sensor	Offset (ft)	Schematic	Description	Length (ft)	O.D. (in)	Weight (lb)
GR	40.33		GR-M&W (105)	3.00	3.50	50.00
CNLSC CNSSC	37.23 36.48		CNT-M&W (210)	5.00	3.50	100.00
LSD DCAL SSD	28.18 28.17 27.68		CDL-M&W (303-03)	8.50	4.00	250.00
MCAL MI MN	19.58 19.58 19.58		ML-PSI STKBL ML (402)	7.58	4.00	65.00
RLL3F RLL3	15.50 15.50		DIL-M&W (506)	18.25	3.50	220.00
CILD	8.33					

CILM 4.50

SP 0.20

Dataset: castle\_shields\_1.db: field/well/stackml/pass3.1  
 Total length: 42.33 ft  
 Total weight: 685.00 lb  
 O.D.: 4.00 in



MIDWEST WIRELINE

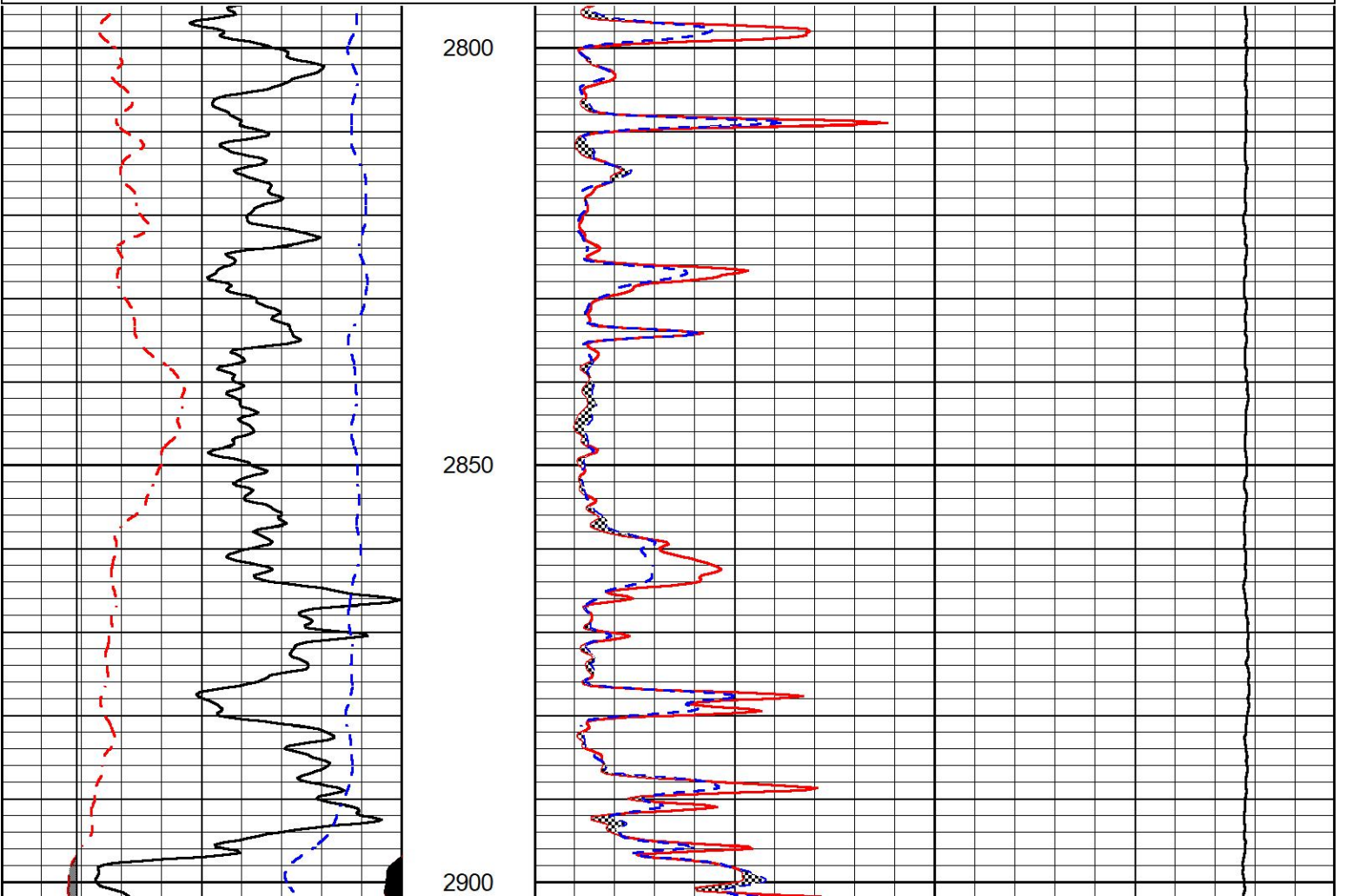
# DETAIL SECTION

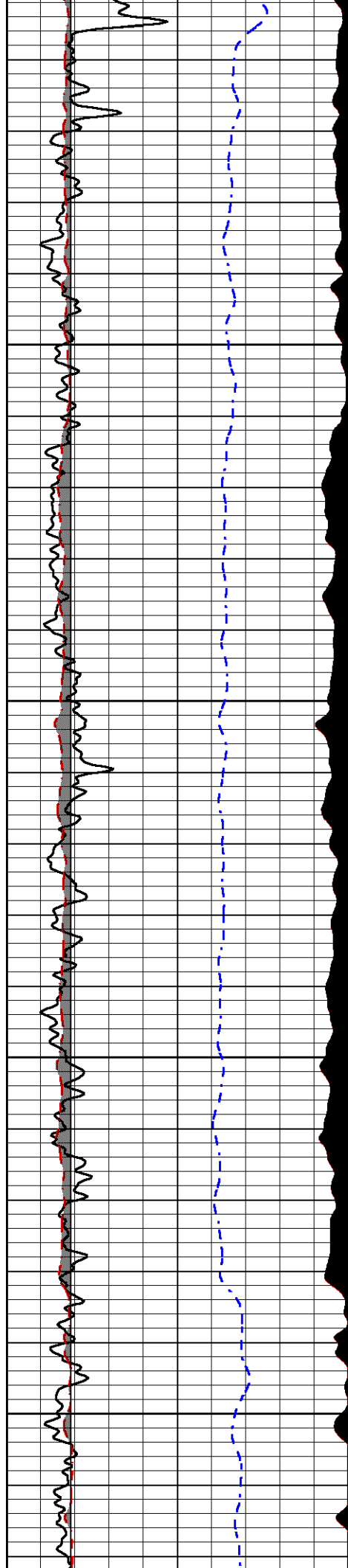
## MAIN PASS

Database File castle\_shields\_1.db  
 Dataset Pathname stackml/pass3.1  
 Presentation Format \_micro  
 Dataset Creation Tue Aug 20 20:54:03 2024  
 Charted by Depth in Feet scaled 1:240

0	Gamma Ray (GAPI)	150
6	Micro Caliper (in)	16
2.875	mcal (in)	7.875
-200	SP (mV)	0

0	Micro Inverse 1 X 1 (Ohm-m)	20
0	Micro Normal 2" (Ohm-m)	20
10000	Line Weight (lb)	0



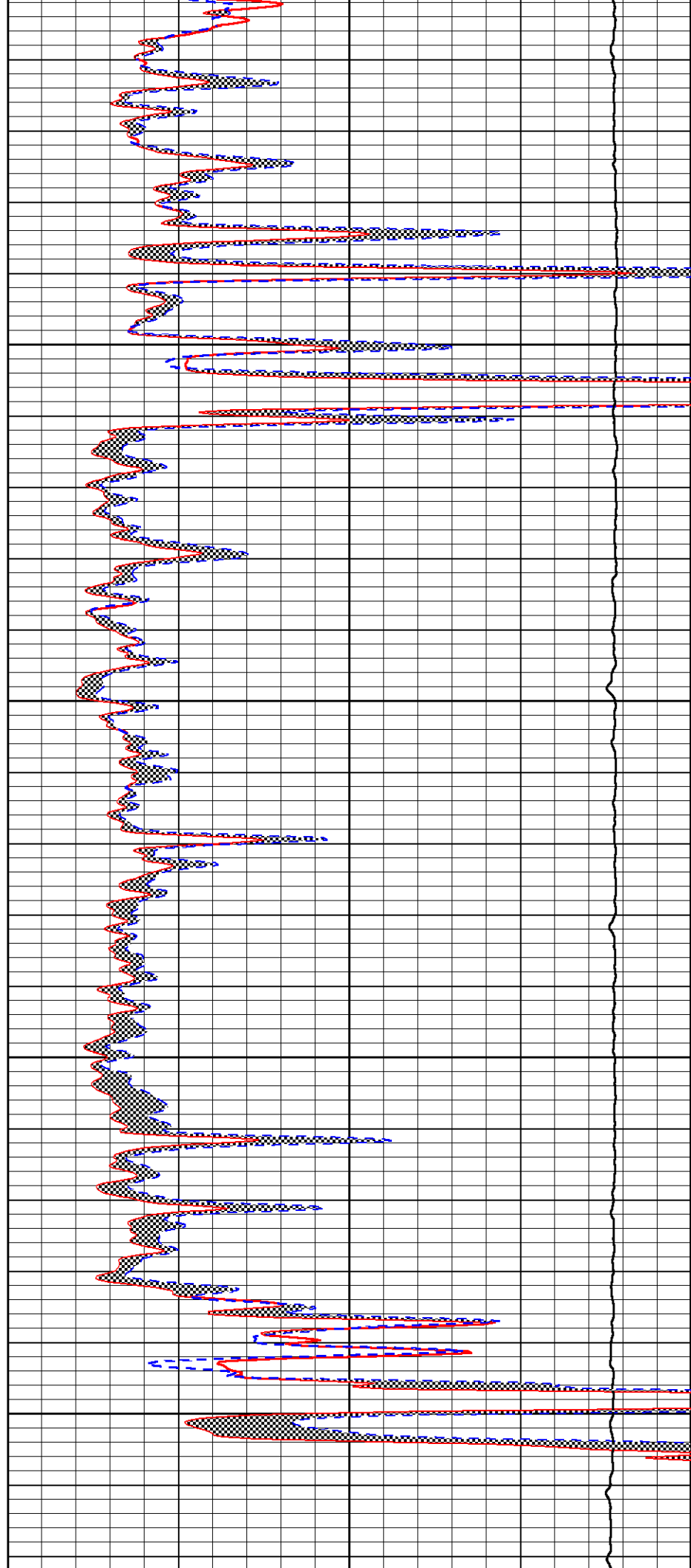


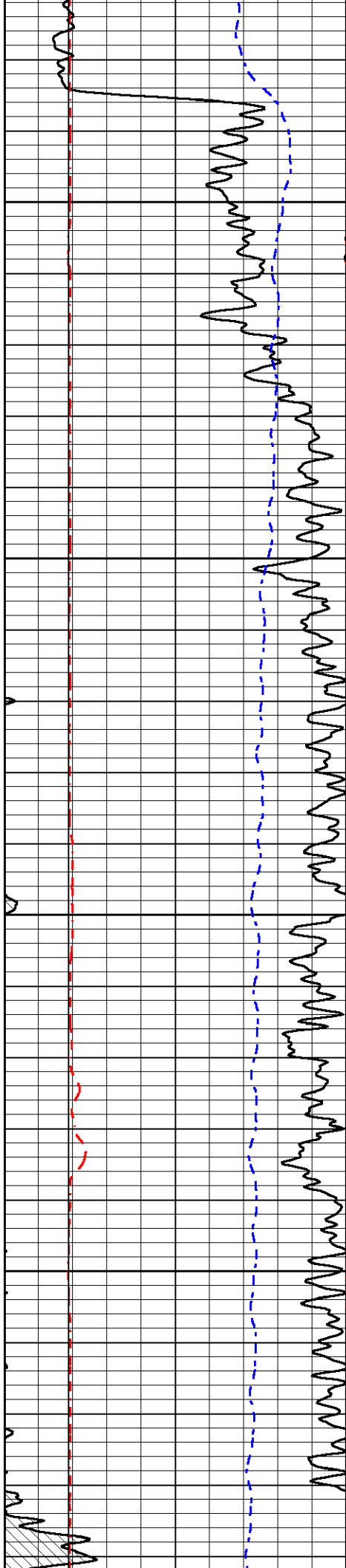
2950

3000

3050

3100



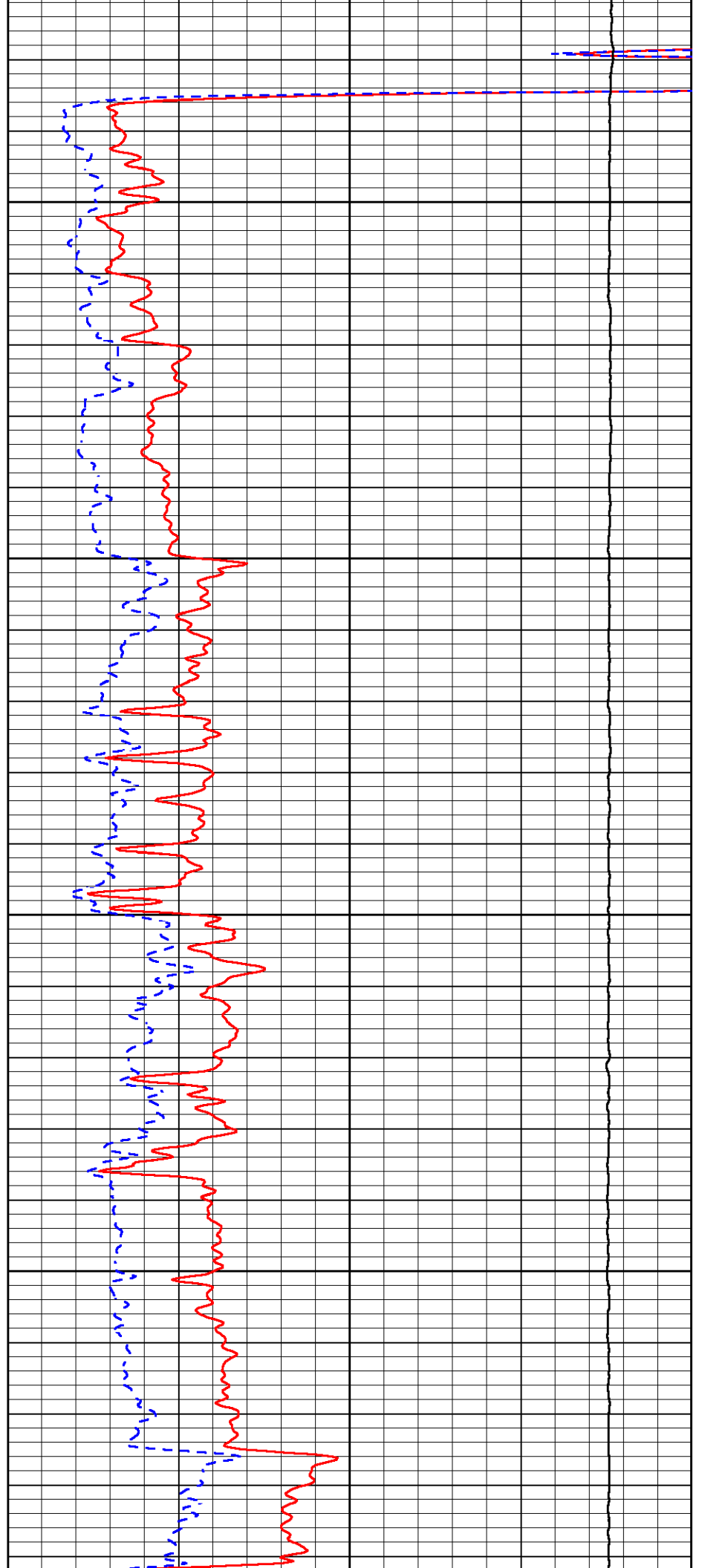


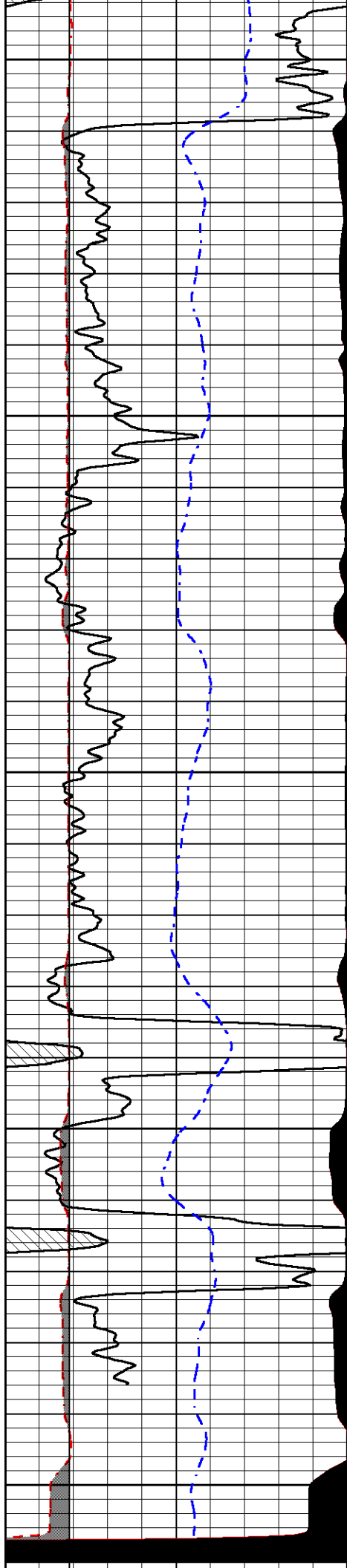
3150

3200

3250

3300





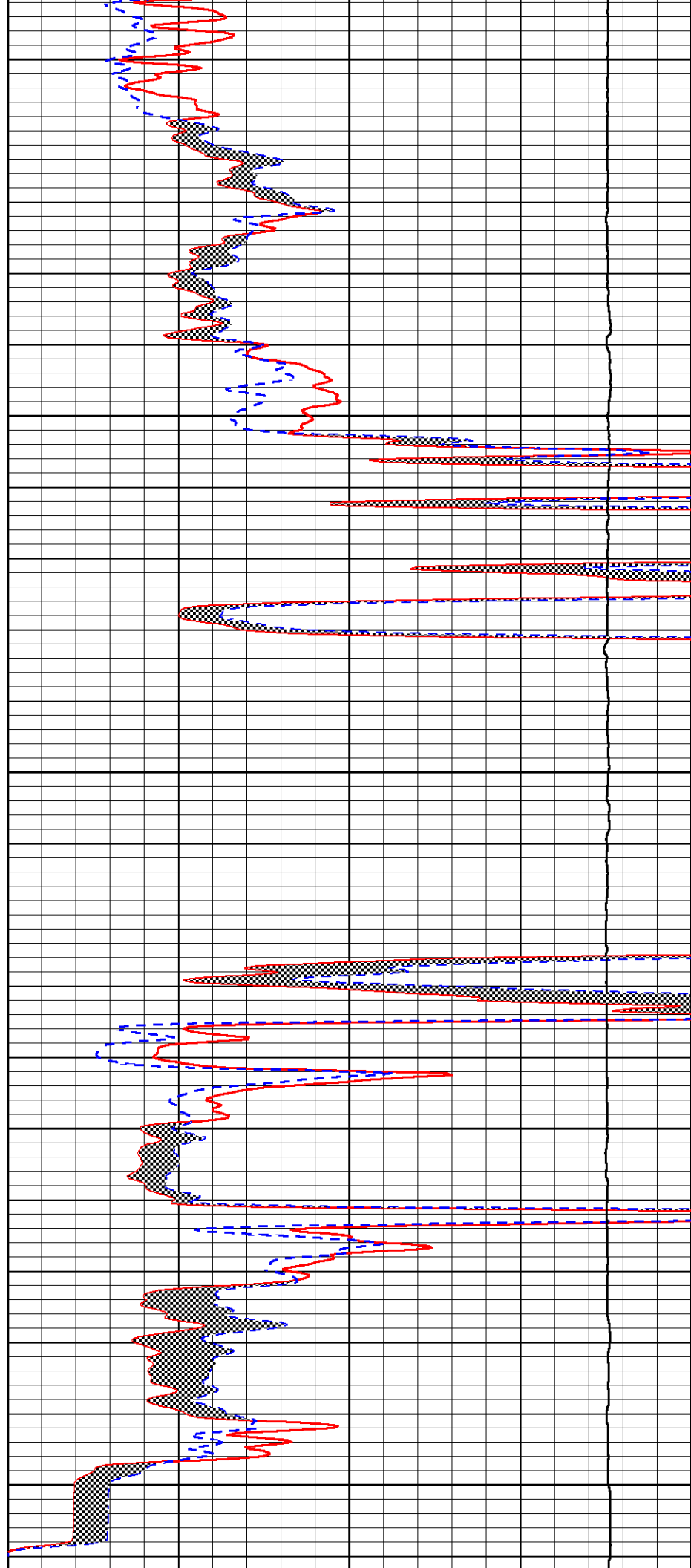
3350

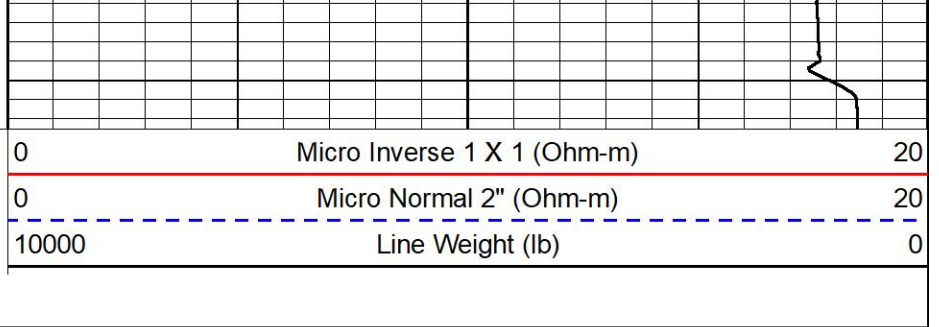
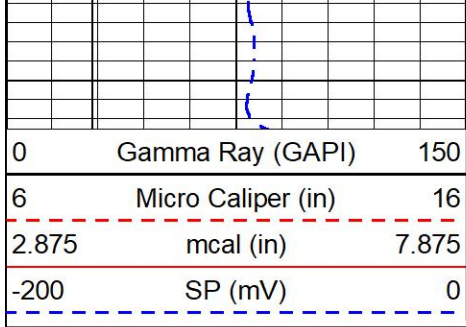
3400

3450

3500

3550

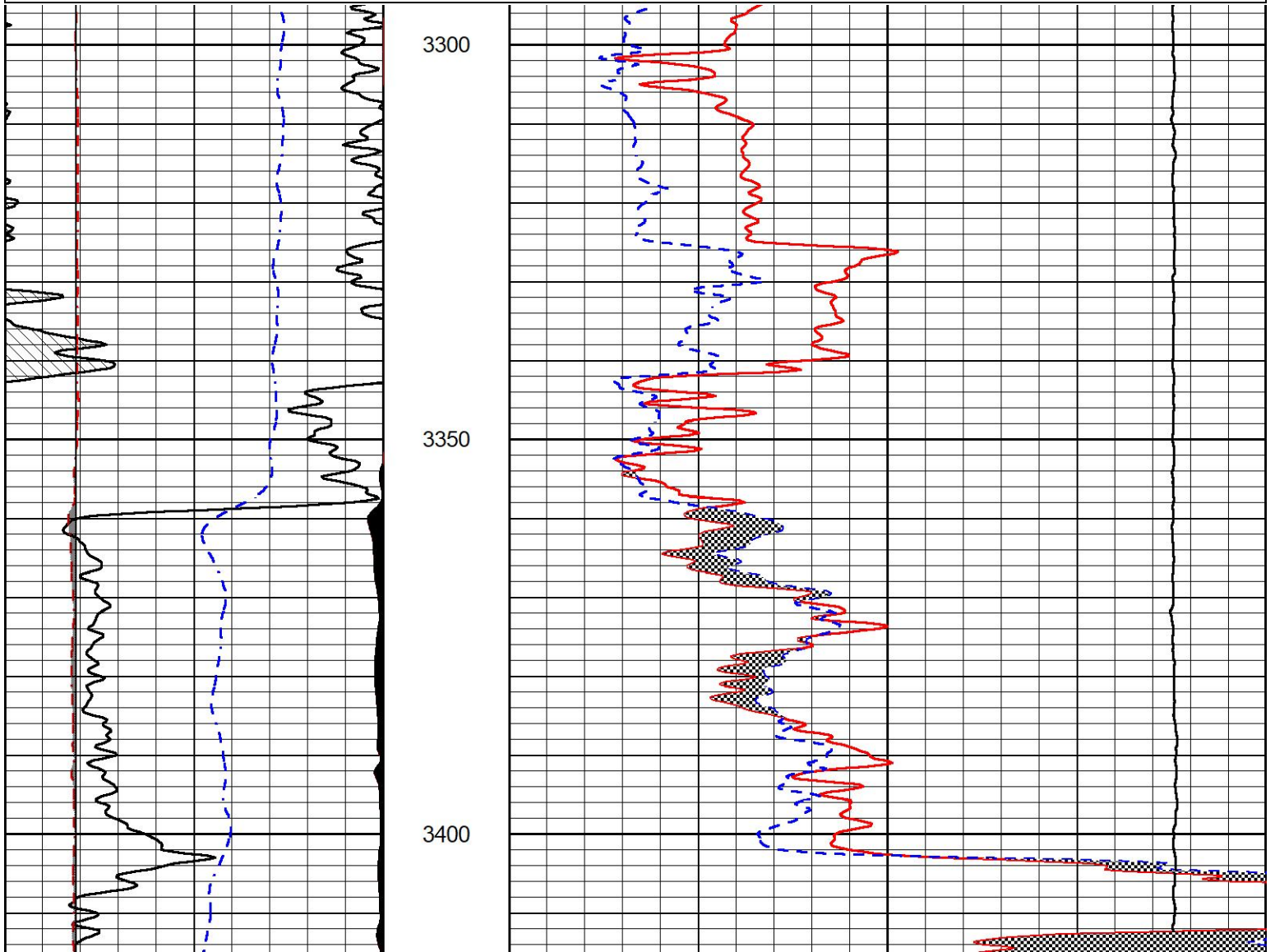
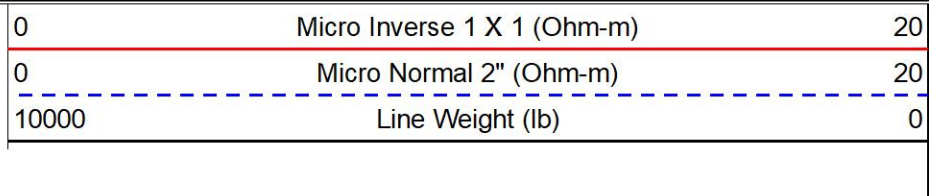
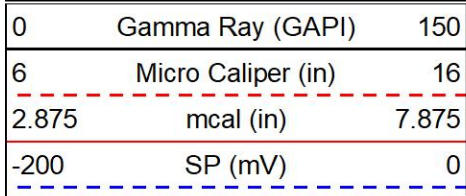


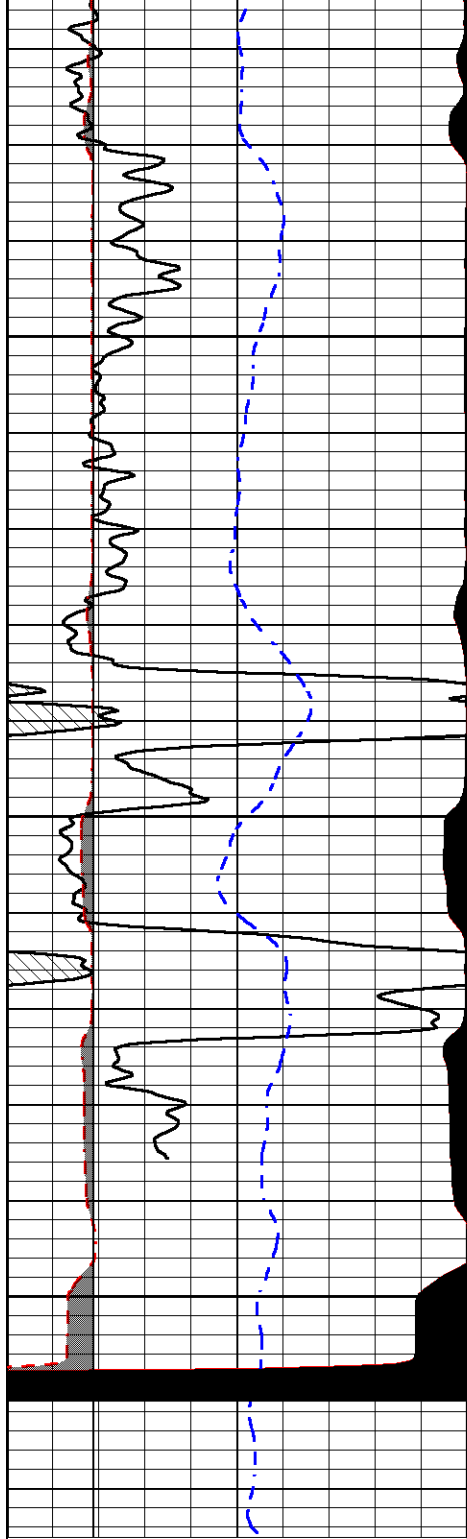


# REPEAT SECTION

## REPEAT PASS

Database File: castle\_shields\_1.db  
 Dataset Pathname: stackml/pass2.1  
 Presentation Format: \_micro  
 Dataset Creation: Tue Aug 20 20:24:31 2024  
 Charted by: Depth in Feet scaled 1:240



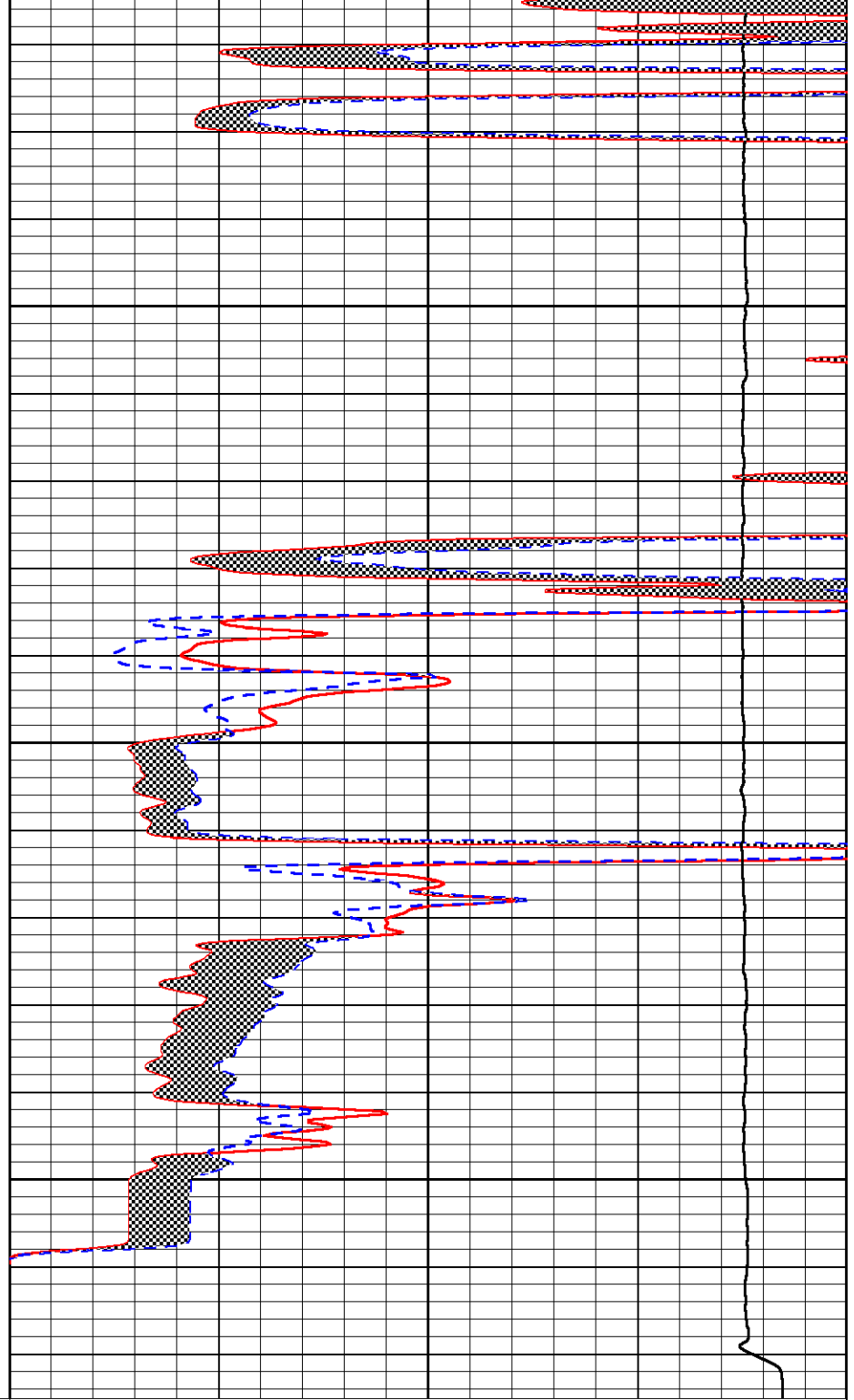


3450

3500

3550

0	Gamma Ray (GAPI)	150
6	Micro Caliper (in)	16
2.875	mcal (in)	7.875
-200	SP (mV)	0



0	Micro Inverse 1 X 1 (Ohm-m)	20
0	Micro Normal 2" (Ohm-m)	20
10000	Line Weight (lb)	0

### Calibration Report

Database File      castle\_shields\_1.db  
 Dataset Pathname  stackml/pass3.1  
 Dataset Creation    Tue Aug 20 20:54:03 2024

### Dual Induction Calibration Report

Serial-Model:                      506-M&W  
 Surface Cal Performed:            Sun Jun 30 20:32:27 2024

Loop:	Readings		References			Results	
	Air	Loop	Air	Loop		m	b
Deep	84.211	428.152	0.000	255.800	mmho/m	0.465	-32.000
Medium	141.000	670.654	0.000	255.800	mmho/m	0.390	-10.000

**Microlog Calibration Report**

Serial-Model: 402-PSI STKBL ML  
 Performed: Thu May 30 05:58:00 2024

	Readings		References			Results	
	Zero	Cal	Zero	Cal		m	b
Normal	0.0037	0.0043	0.0000	10.0000	Ohm-m	16000.0000	0.0000
Inverse	0.1208	0.0013	0.0000	10.0000	Ohm-m	20500.0000	0.0000
Caliper	1.0046	1.1419	5.5000	20.0000	in	50.0000	-44.6250

**Compensated Density Calibration Report**

Serial-Model: 303-03-M&W  
 Source #: 21170B  
 Master Calibration Performed: Fri Mar 22 13:26:25 2024

**Master Calibration**

	Density		Far Detector	Near Detector	
Magnesium	1.680	g/cc	5466.68	7555.42	cps
Aluminum	2.580	g/cc	1173.67	5050.86	cps
Spine Angle = 75.33			Density/Spine Ratio = 0.566		
	Size		Reading		
Small Ring	4.00	in	1.17		
Large Ring	14.00	in	1.07		

**Compensated Neutron Calibration Report**

Serial Number: 210  
 Tool Model: M&W

**CALIBRATION**

Detector	Readings	Target	Normalization
Short Space	6240.00 cps	1000.00 cps	1.6025
Long Space	460.00 cps	1000.00 cps	1.9500

**Gamma Ray Calibration Report**

Serial Number: 105  
 Tool Model: M&W  
 Performed: Sat Oct 21 23:48:19 2023

Calibrator Value: 500.0 GAPI

Background Reading: 24.0 cps  
 Calibrator Reading: 637.0 cps

Sensitivity:

0.6000

GAPI/cps



MIDWEST WIRELINE

Company	Castle Resources Inc
Well	Shields 1
Field	Lindsborg
County	McPherson
State	Kansas