



MIDWEST WIRELINE

DUAL COMP POROSITY LOG

Company Castle Resources Inc
 Well Shields 1
 Field Lindsborg
 County McPherson
 State Kansas

Location: API #: 15-113-21413-00-00
 330 FNL & 2310 FEL
 SEC 19 TWP 17S RGE 3W
 Permanent Datum Ground Level Elevation 1336
 Log Measured From Kelly Bushing
 Drilling Measured From Kelly Bushing
 Other Services
 DIL
 MEL
 K.B. 1341
 D.F.
 G.L. 1336

Date	8/20/2024						
Run Number	One						
Type Log	CNL/CDL						
Depth Driller	3570						
Depth Logger	3569						
Bottom Logged Interval	3540						
Top Logged Interval	2800						
Type Fluid In Hole	Chemical						
Salinity, PPM CL	4000						
Density	9.3						
Level	Full						
Max. Rec. Temp. F	112						
Operating Rig Time	2 Hours						
Equipment -- Location	110 HAYS						
Recorded By	J. Henrickson						
Witnessed By	Jerry Green						
Borehole Record		Casing Record					
Run No.	Bit	From	To	Size	Wgt.	From	To
One	12.25	0	360	8.625	23	0	360
Two	7.875	360	TD				

<<< Fold Here >>>

All interpretations are opinions based on inferences from electrical or other measurements and Midwest Wireline LLC cannot and does not guarantee the accuracy or correctness of any interpretation, and Midwest Wireline LLC will not be liable or responsible for any loss, costs, damages, or expenses incurred or sustained by anyone resulting from any interpretation made by any of our officers, agents or employees.

Comments

N/A DENOTES NOT AVAILABLE OR NON-APPLICABLE.

Lindsborg Kansas
 1 East on Hwy 4 to Buffalo Trail, 1/2 South,
 West and North Into

Log Measured From: Kelly Bushing 5 Ft. Above Permanent Datum

THANK YOU FOR USING MIDWEST WIRELINE LLC
 785-625-3858

Your Midwest Wireline Crew		This Log Record Was Witnessed By	
Engineer: J. Henrickson	Operator:	Primary Witness: Jerry Green	Secondary Witness:
Operator:	Operator:	Secondary Witness:	Secondary Witness:
Operator:		Secondary Witness:	

Log Variables

DatabaseC:\ProgramData\Warrior\Data\castle_shields_1.db
 Dataset field/well/stackml/pass3.1/_vars_

Top - Bottom

A	BOREID in	BOTTEMP degF	CASEOD in	CASETHCK in	FLUIDDEN g/cc	M	MATRXDEN g/cc
1	7.875	112	5.5	0	1	2	2.71
NPORSEL	PERFS	SNDERR mmho/m	SNDERRM mmho/m	SPSHIFT mV	SRFTEMP degF	SZCOR	TDEPTH ft
Limestone	No	6	2	116	73	Off	3570

Sensor	Offset (ft)	Schematic	Description	Length (ft)	O.D. (in)	Weight (lb)
GR	40.33		GR-M&W (105)	3.00	3.50	50.00
CNLSC CNSSC	37.23 36.48		CNT-M&W (210)	5.00	3.50	100.00
LSD DCAL SSD	28.18 28.17 27.68		CDL-M&W (303-03)	8.50	4.00	250.00
MCAL MI MN	19.58 19.58 19.58		ML-PSI STKBL ML (402)	7.58	4.00	65.00
RLL3F RLL3	15.50 15.50		DIL-M&W (506)	18.25	3.50	220.00
CILD	8.33					

CILM 4.50

SP 0.20

Dataset: castle_shields_1.db: field/well/stackml/pass3.1
 Total length: 42.33 ft
 Total weight: 685.00 lb
 O.D.: 4.00 in



MIDWEST WIRELINE

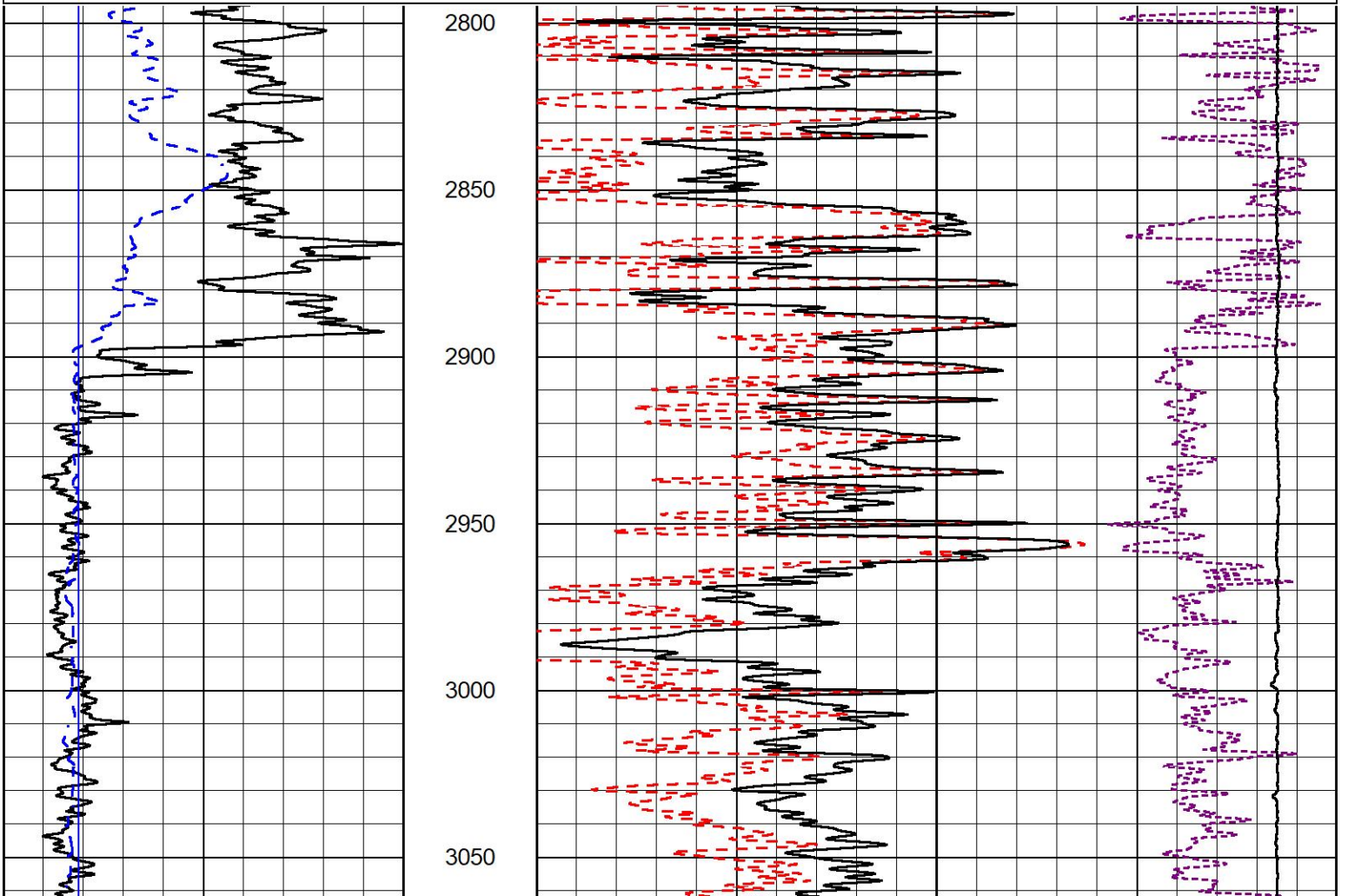
2" SCALE BULK DENSITY

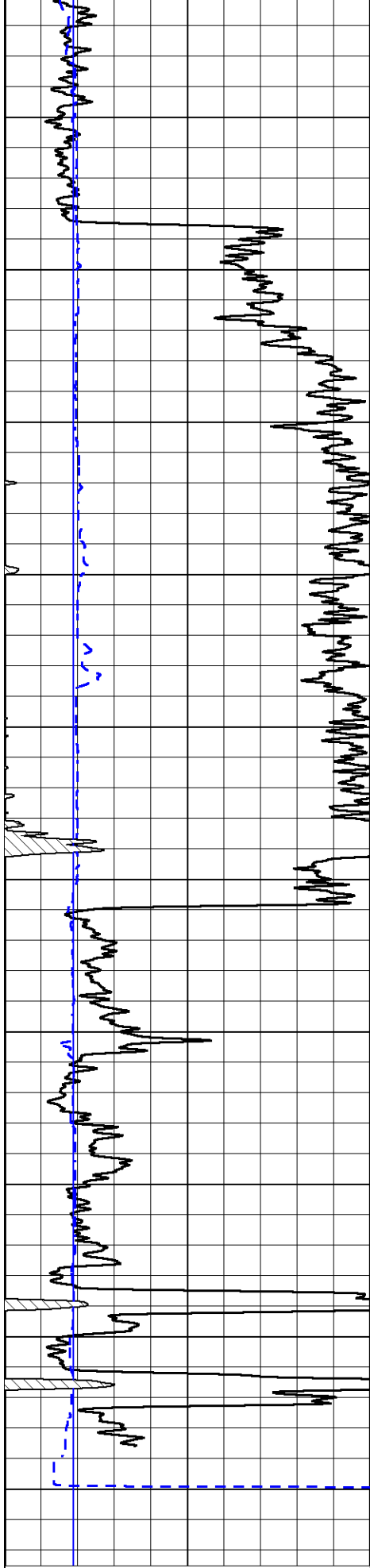
MAIN PASS

Database File castle_shields_1.db
 Dataset Pathname stackml/pass3.3
 Presentation Format _cdl
 Dataset Creation Tue Aug 20 20:22:03 2024
 Charted by Depth in Feet scaled 1:600

0 Gamma Ray (GAPI) 150
 6 Caliper (in) 16

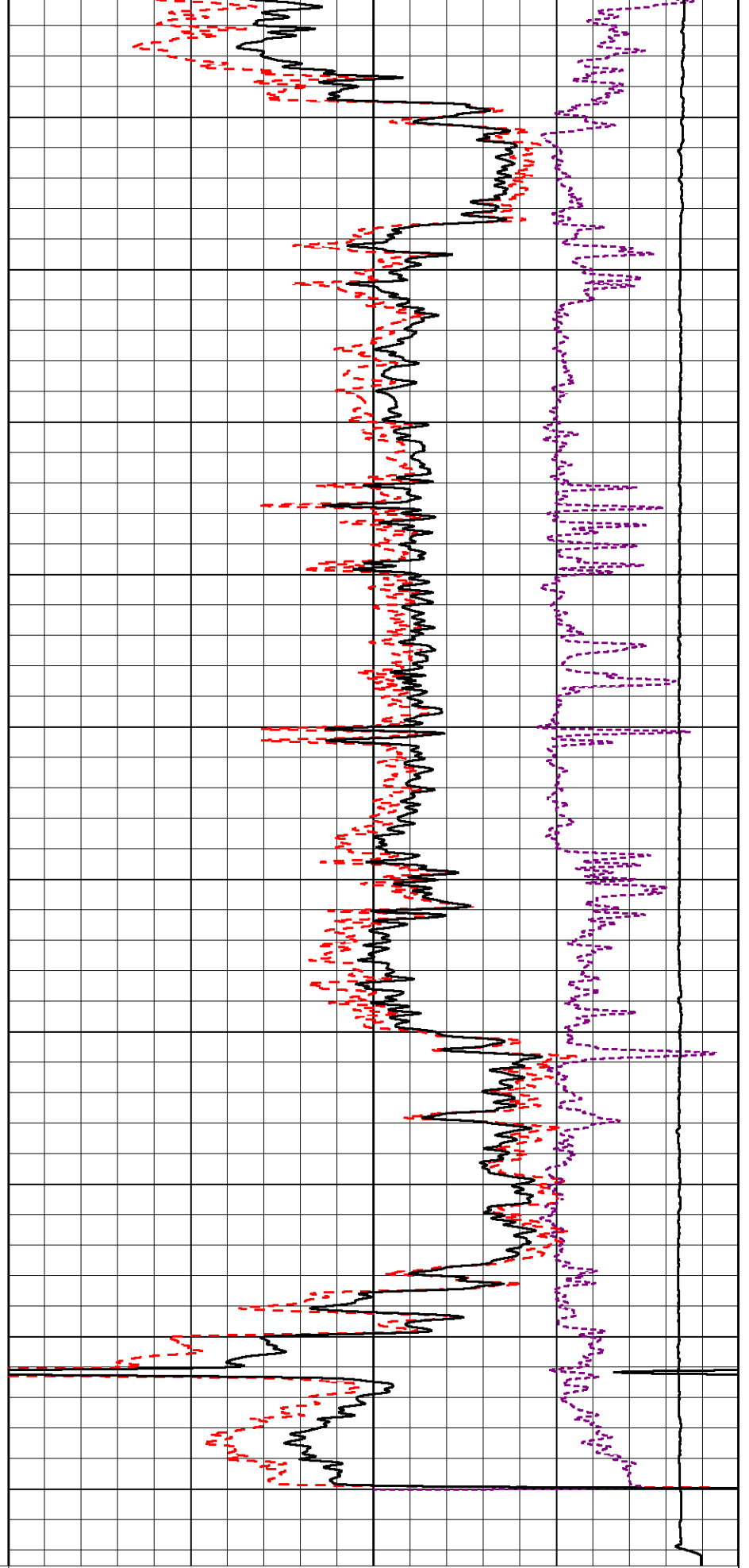
30 Compensated Density (pu) -10
 2 Bulk Density (g/cc) 3
 15000 Line Tension (lb) 0
 -0.25 Correction (g/cc) 0.25





3100
3150
3200
3250
3300
3350
3400
3450
3500
3550

0 Gamma Ray (GAPI) 150
6 Caliper (in) 16



30 Compensated Density (pu) -10
2 Bulk Density (g/cc) 3
15000 Line Tension (lb) 0

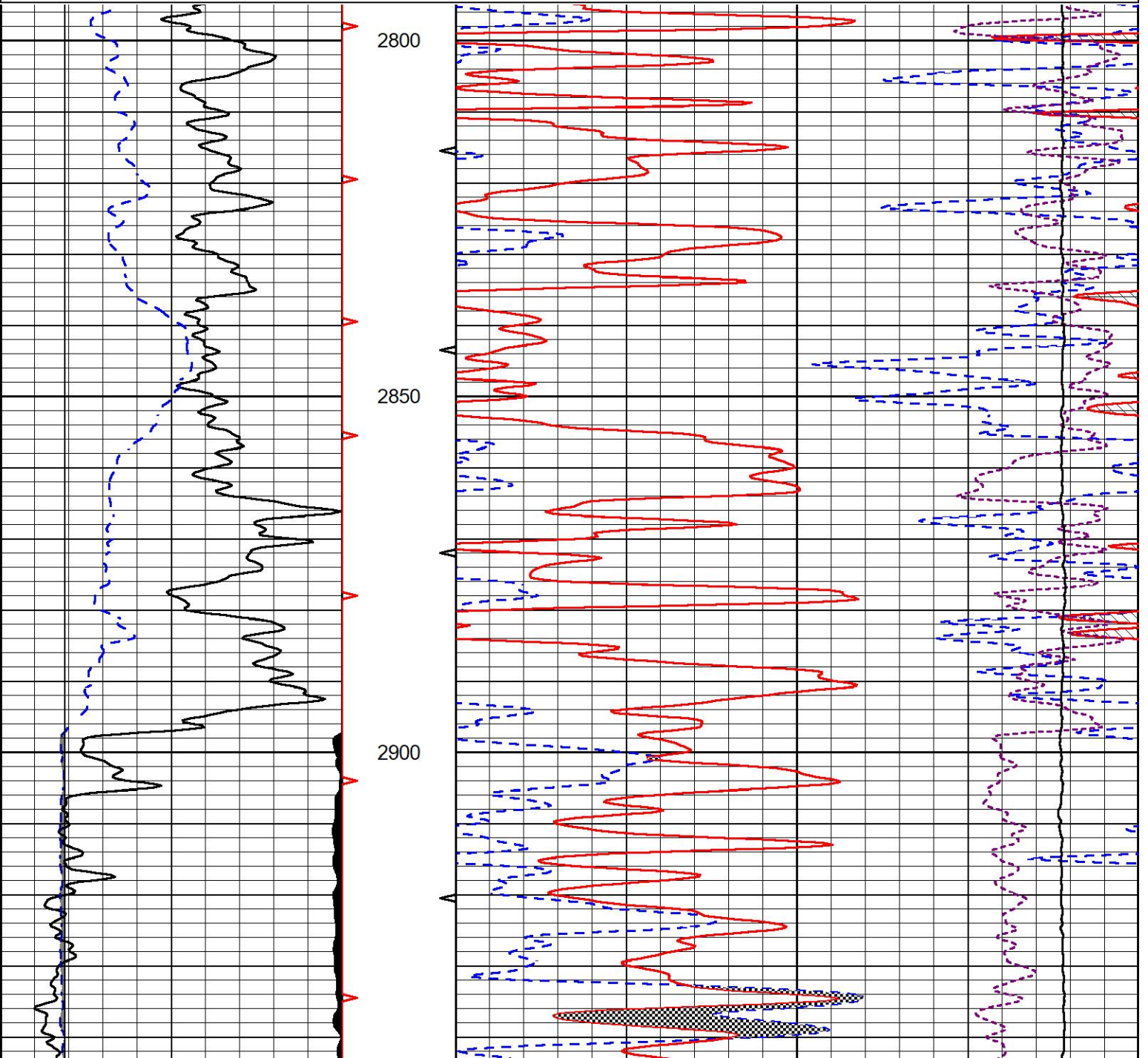


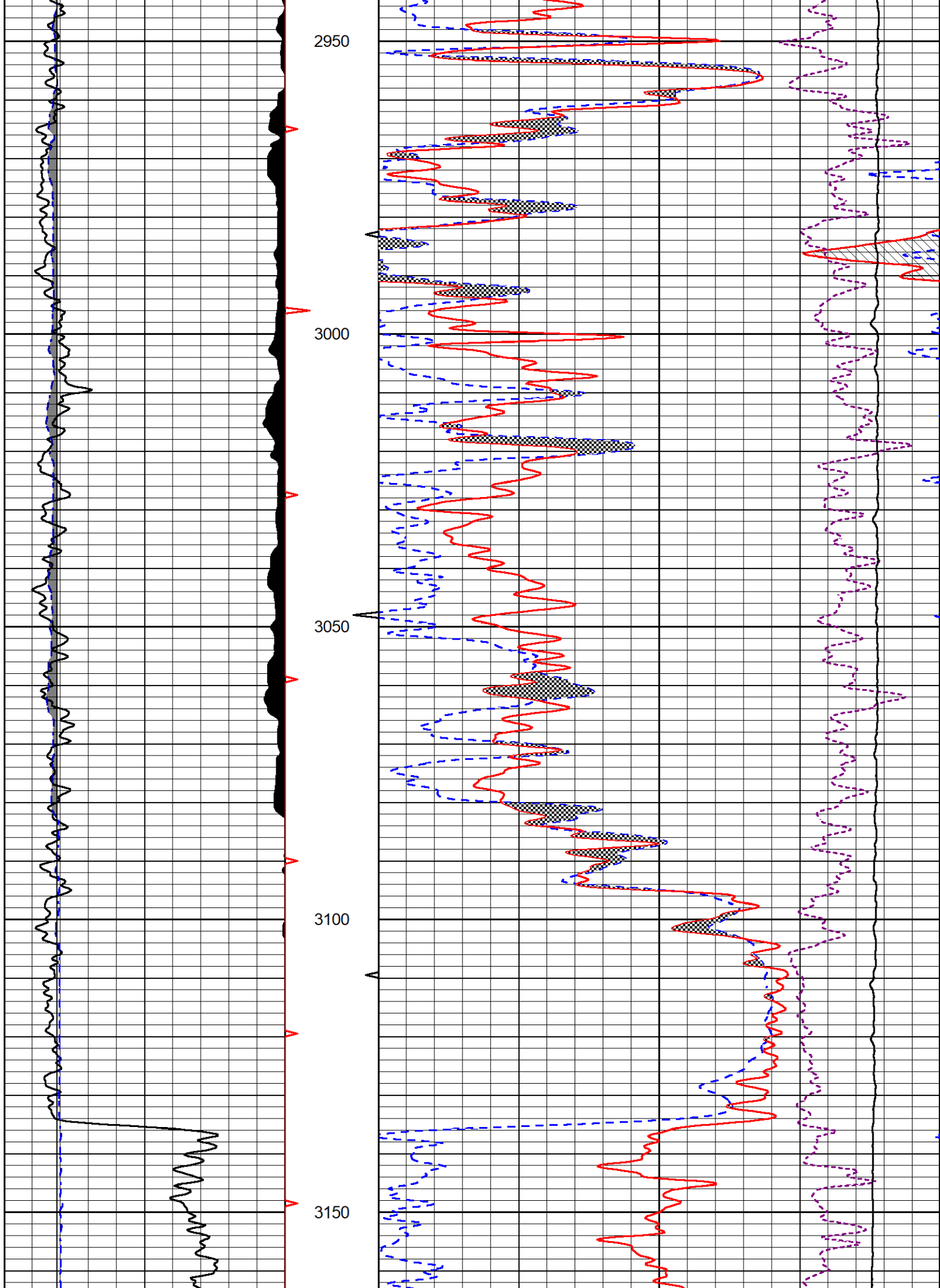
DETAIL SECTION

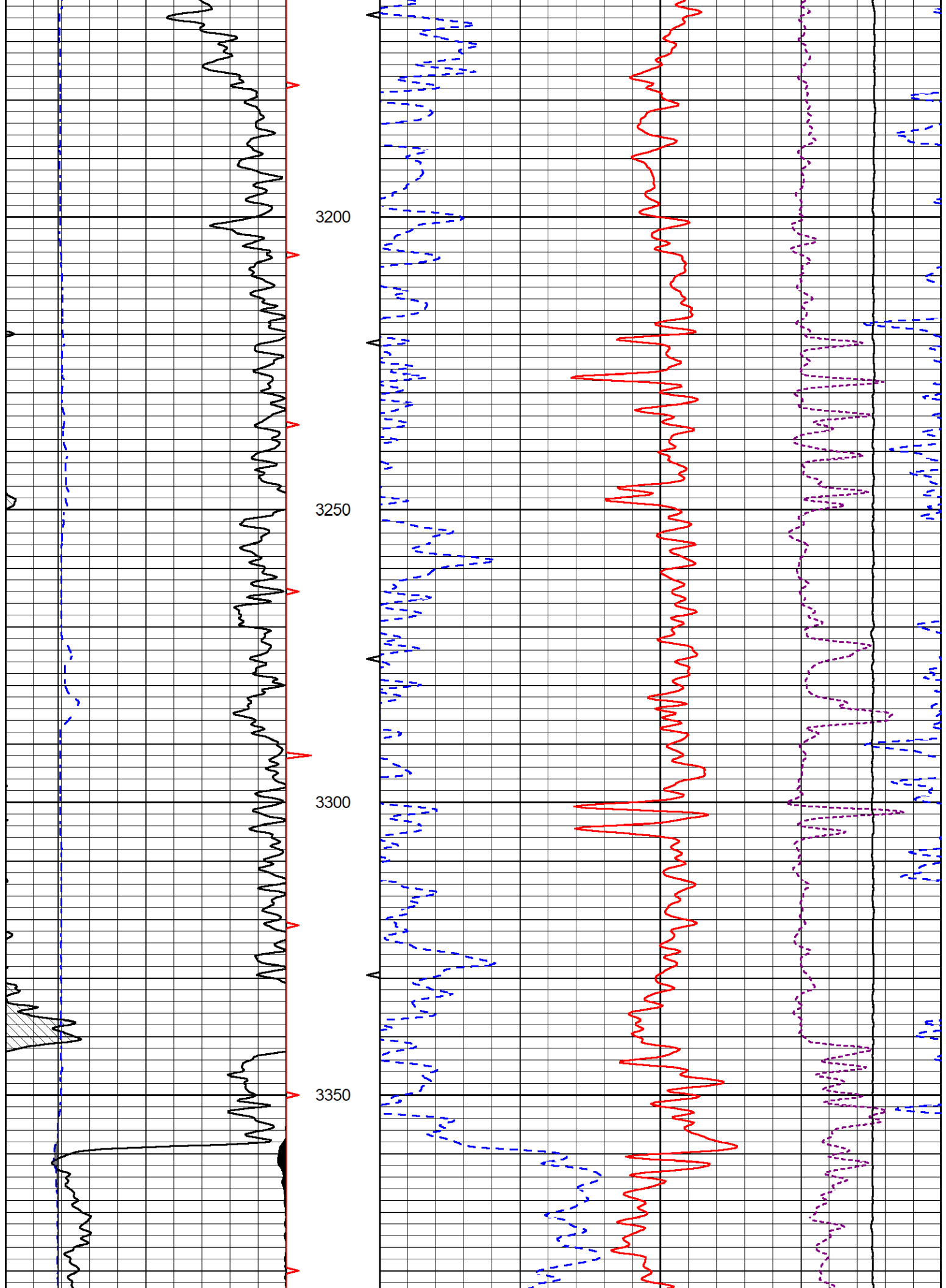
MAIN PASS

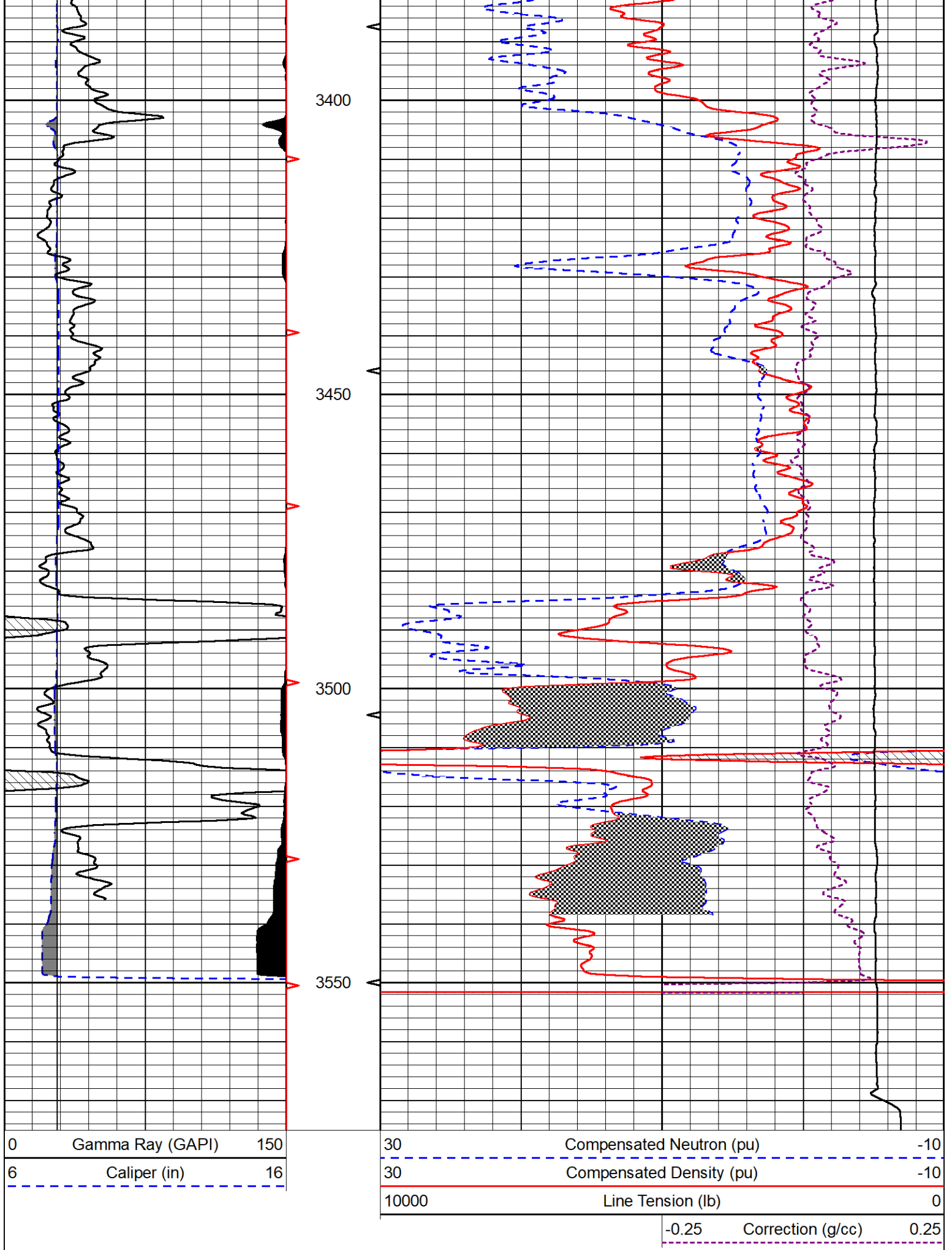
Database File castle_shields_1.db
 Dataset Pathname stackml/pass3.1
 Presentation Format _CNDLS~1
 Dataset Creation Tue Aug 20 20:54:03 2024
 Charted by Depth in Feet scaled 1:240

0	Gamma Ray (GAPI)	150	30	Compensated Neutron (pu)	-10
6	Caliper (in)	16	30	Compensated Density (pu)	-10
			10000	Line Tension (lb)	0
			-0.25	Correction (g/cc)	0.25









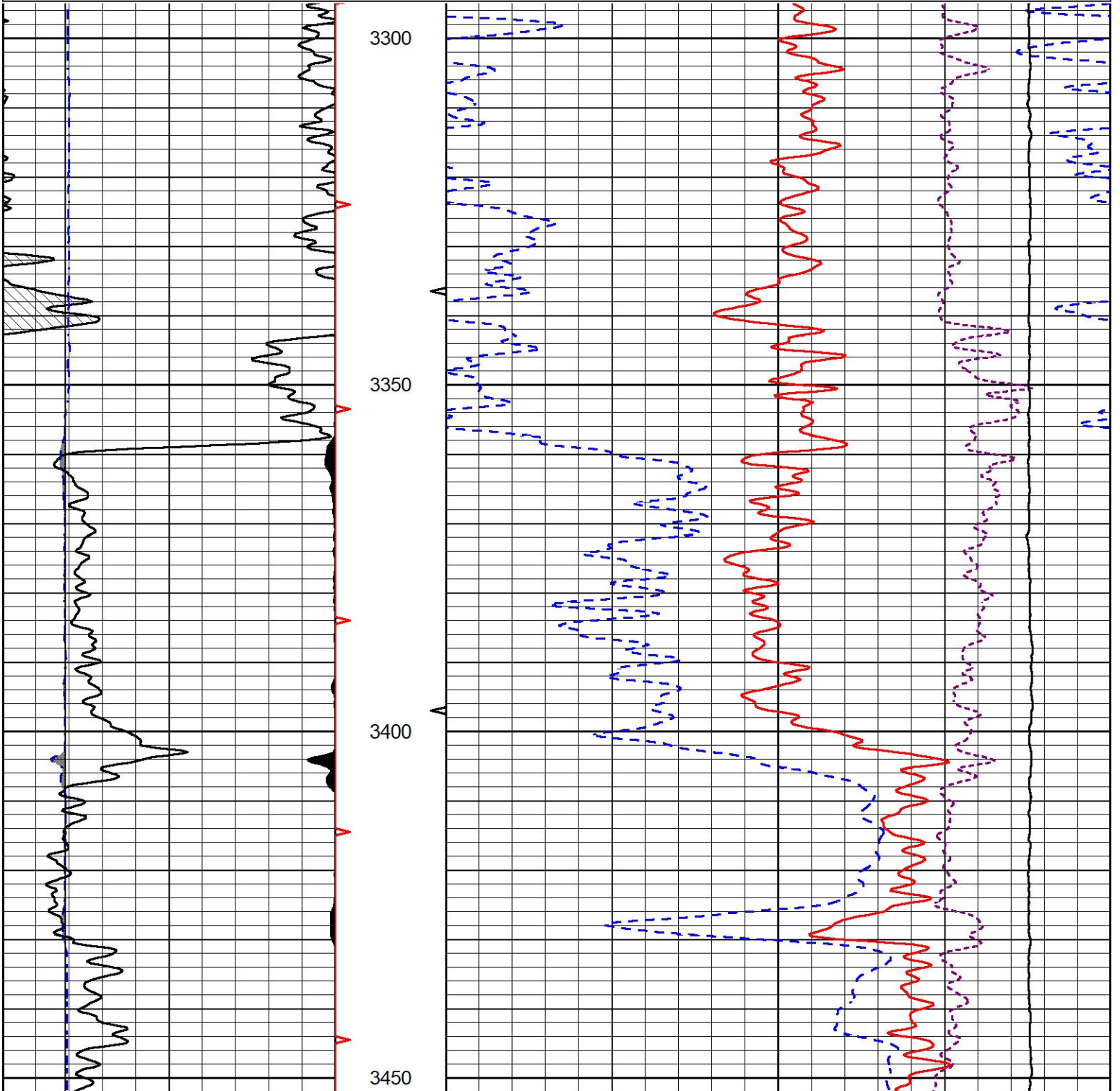


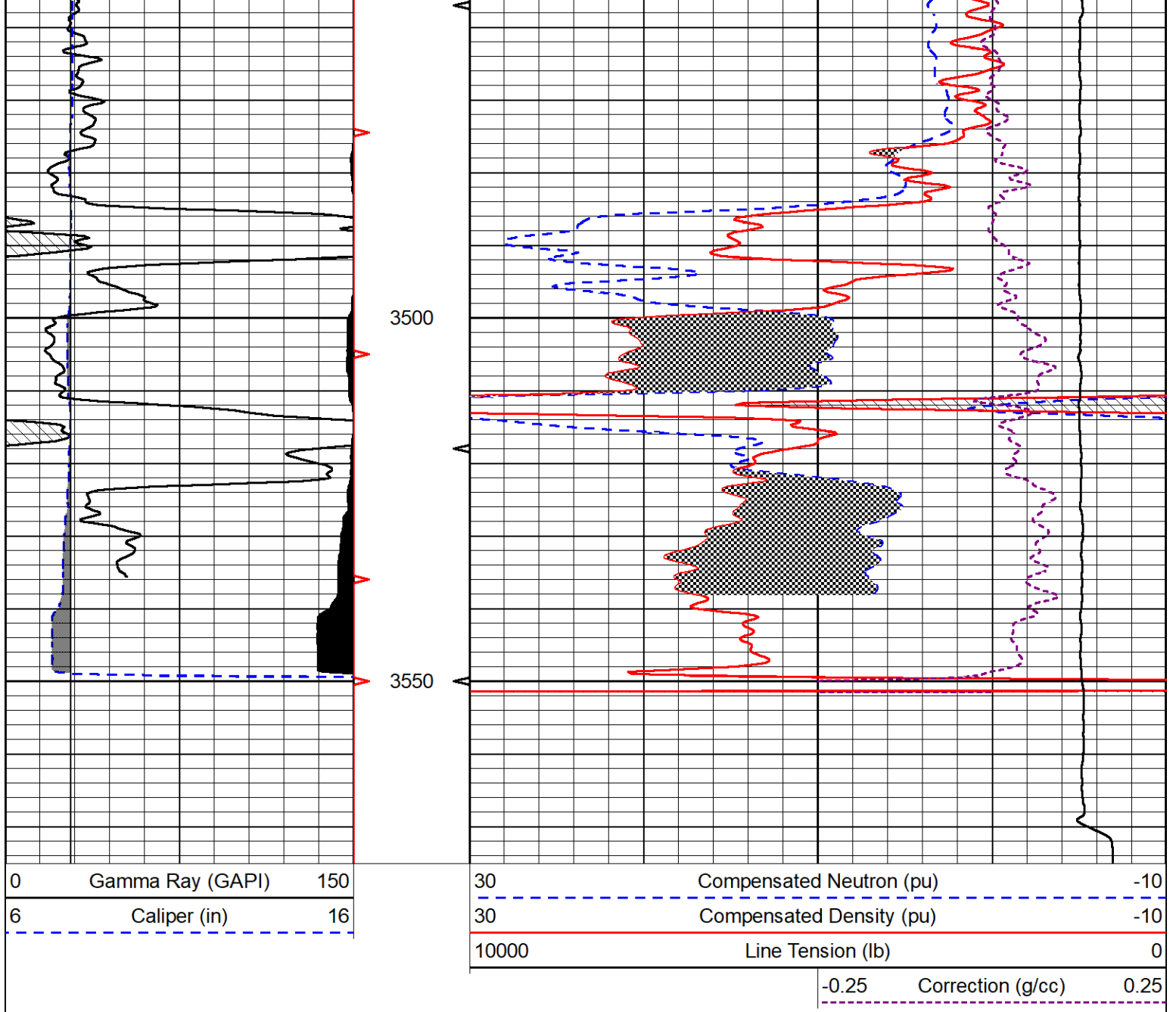
REPEAT SECTION

REPEAT PASS

Database File castle_shields_1.db
 Dataset Pathname stackml/pass2.1
 Presentation Format _CNDLS~1
 Dataset Creation Tue Aug 20 20:24:31 2024
 Charted by Depth in Feet scaled 1:240

0	Gamma Ray (GAPI)	150	30	Compensated Neutron (pu)	-10	
6	Caliper (in)	16	30	Compensated Density (pu)	-10	
			10000	Line Tension (lb)	0	
				-0.25	Correction (g/cc)	0.25





Calibration Report

Database File castle_shields_1.db
 Dataset Pathname stackml/pass3.1
 Dataset Creation Tue Aug 20 20:54:03 2024

Dual Induction Calibration Report

Serial-Model: 506-M&W
 Surface Cal Performed: Sun Jun 30 20:32:27 2024

Loop:	Readings		References			Results	
	Air	Loop	Air	Loop	mmho/m	m	b
Deep	84.211	428.152	0.000	255.800	mmho/m	0.465	-32.000
Medium	141.000	670.654	0.000	255.800	mmho/m	0.390	-10.000

Microlog Calibration Report

Serial-Model: 402-PSI STKBL ML
 Performed: Thu May 30 05:58:00 2024

	Readings		References			Results	
	Zero	Cal	Zero	Cal		m	b
Normal	0.0037	0.0043	0.0000	10.0000	Ohm-m	16000.0000	0.0000
Inverse	0.1208	0.0013	0.0000	10.0000	Ohm-m	20500.0000	0.0000
Caliper	1.0046	1.1419	5.5000	20.0000	in	50.0000	-44.6250

Compensated Density Calibration Report

Serial-Model: 303-03-M&W
Source #: 21170B
Master Calibration Performed: Fri Mar 22 13:26:25 2024

Master Calibration

	Density		Far Detector	Near Detector	
Magnesium	1.680	g/cc	5466.68	7555.42	cps
Aluminum	2.580	g/cc	1173.67	5050.86	cps
Spine Angle = 75.33		Density/Spine Ratio = 0.566			
	Size		Reading		
Small Ring	4.00	in	1.17		
Large Ring	14.00	in	1.07		

Compensated Neutron Calibration Report

Serial Number: 210
Tool Model: M&W

CALIBRATION

Detector	Readings	Target	Normalization
Short Space	6240.00 cps	1000.00 cps	1.6025
Long Space	460.00 cps	1000.00 cps	1.9500

Gamma Ray Calibration Report

Serial Number: 105
Tool Model: M&W
Performed: Sat Oct 21 23:48:19 2023

Calibrator Value: 500.0 GAPI

Background Reading: 24.0 cps
Calibrator Reading: 637.0 cps

Sensitivity: 0.6000 GAPI/cps



Company: Castle Resources Inc
Well: Shields 1
Field: Lindsborg
County: McPherson
State: Kansas