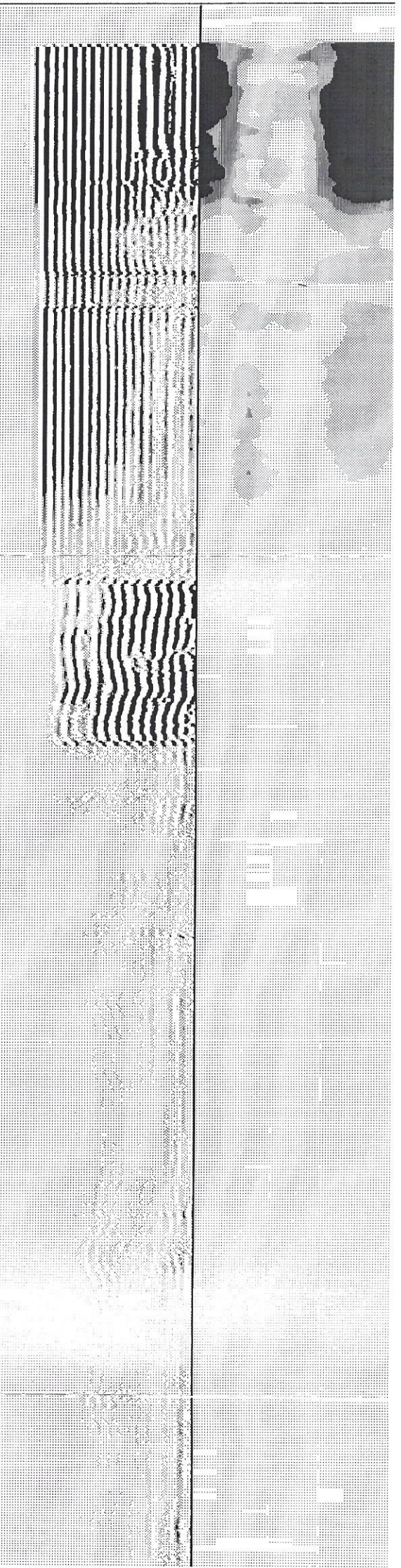
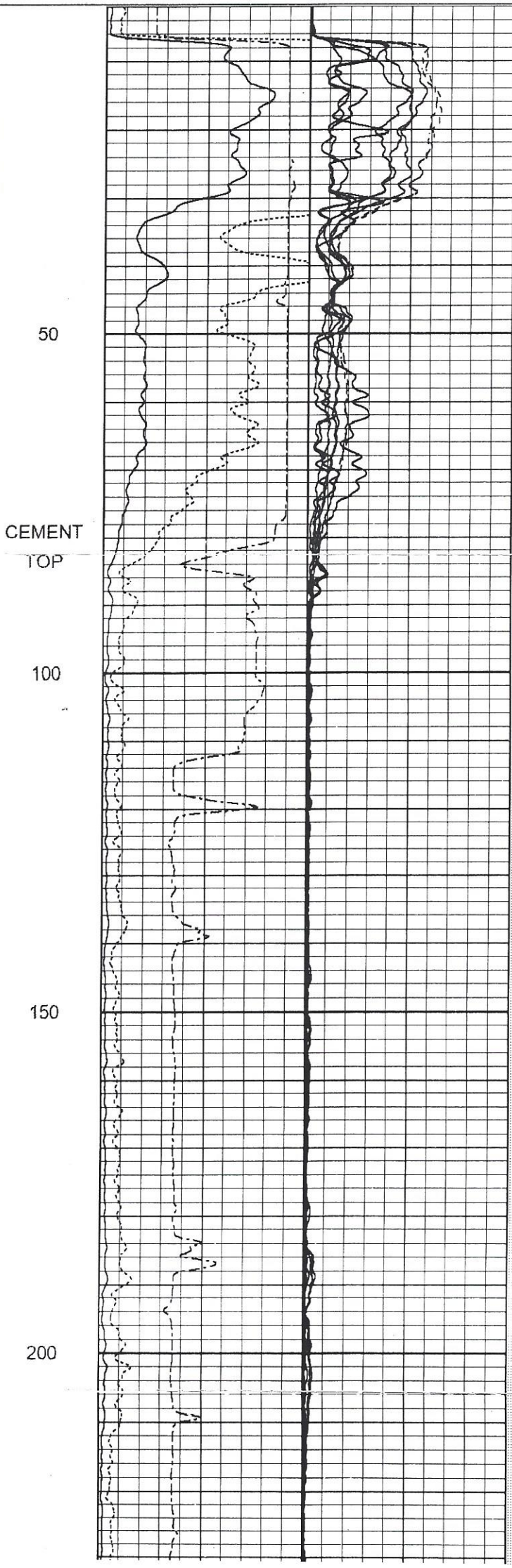
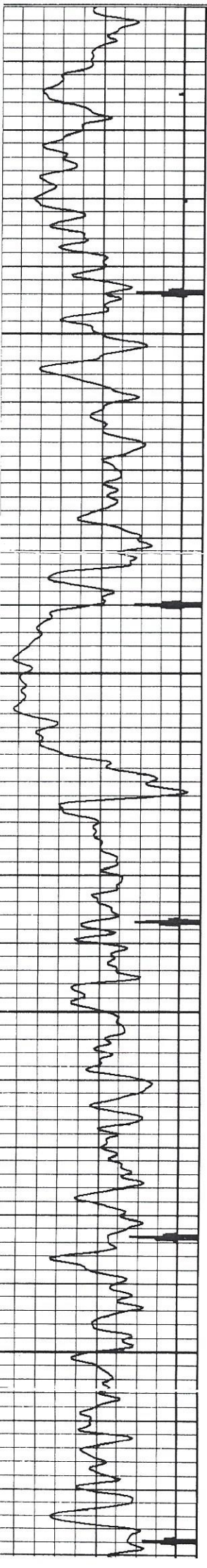
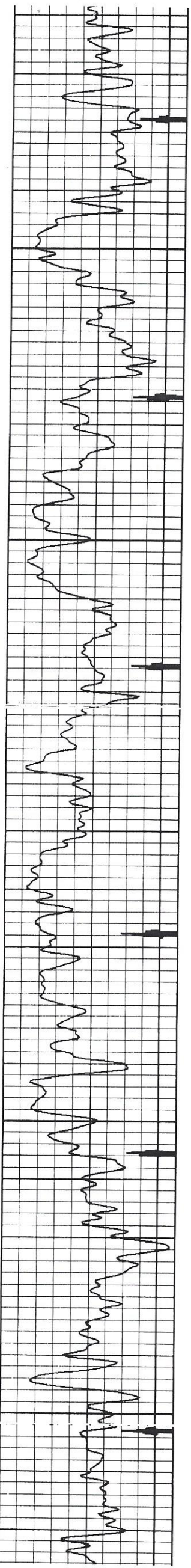


30 Casing Collar -3.5
 Gamma Ray
 0 (GAPI) 130

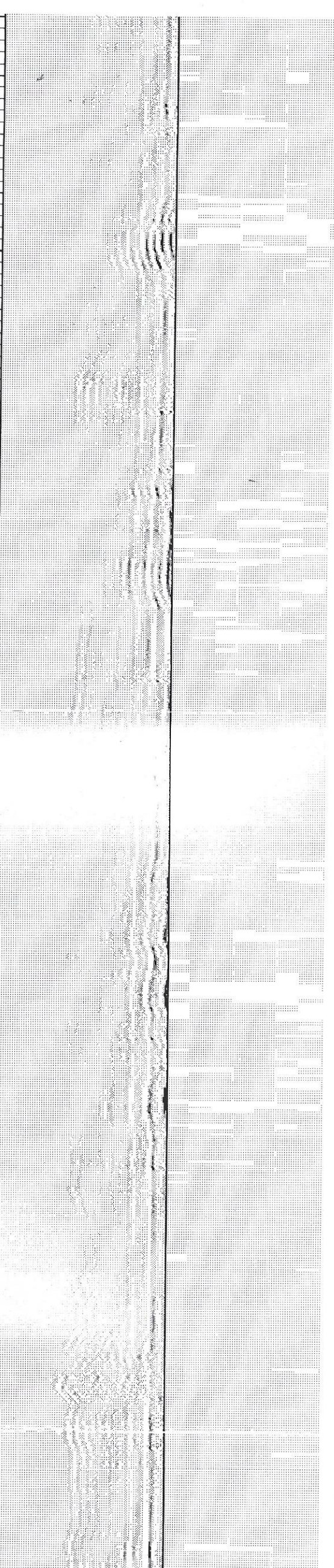
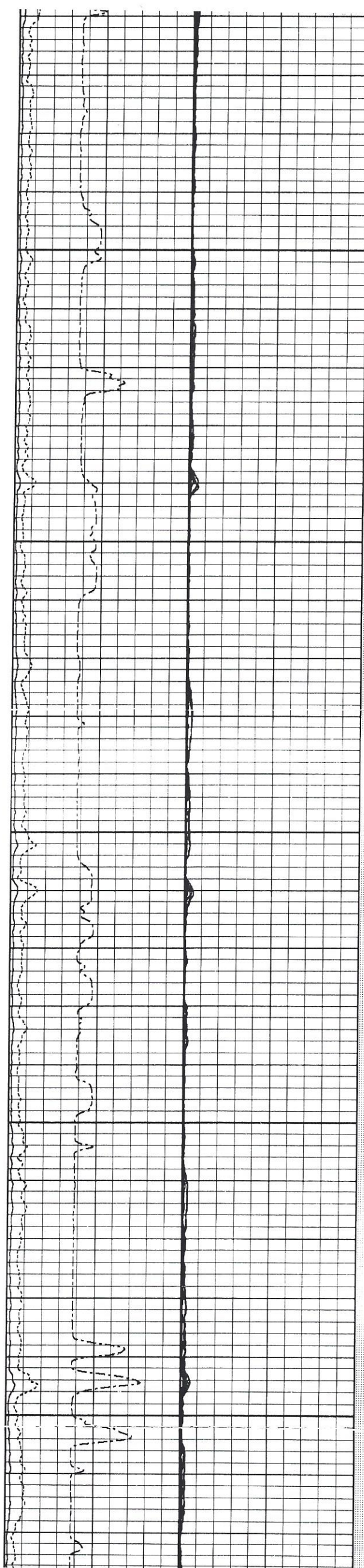
0	Pipe Bond (mV)	110	0	Sector 1	200
	Pipe Bond x5		0	Sector 2	200
0	(mV)	30	0	Sector 3	200
	Travel Time		0	Sector 4	200
1200	(usec)	220	0	Sector 5	200
			0	Sector 6	200
			0	Sector 7	200
			0	Sector 8	200

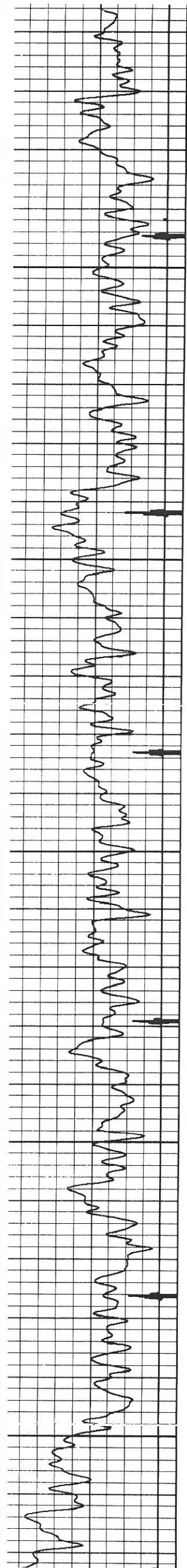
Variable Density 1 Radial Map 8
 200 (usec) 1200



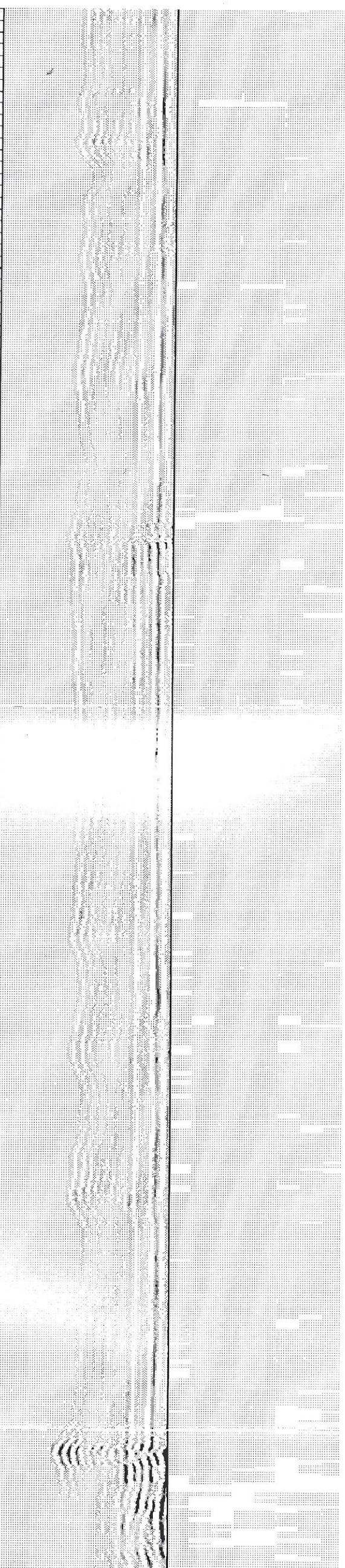
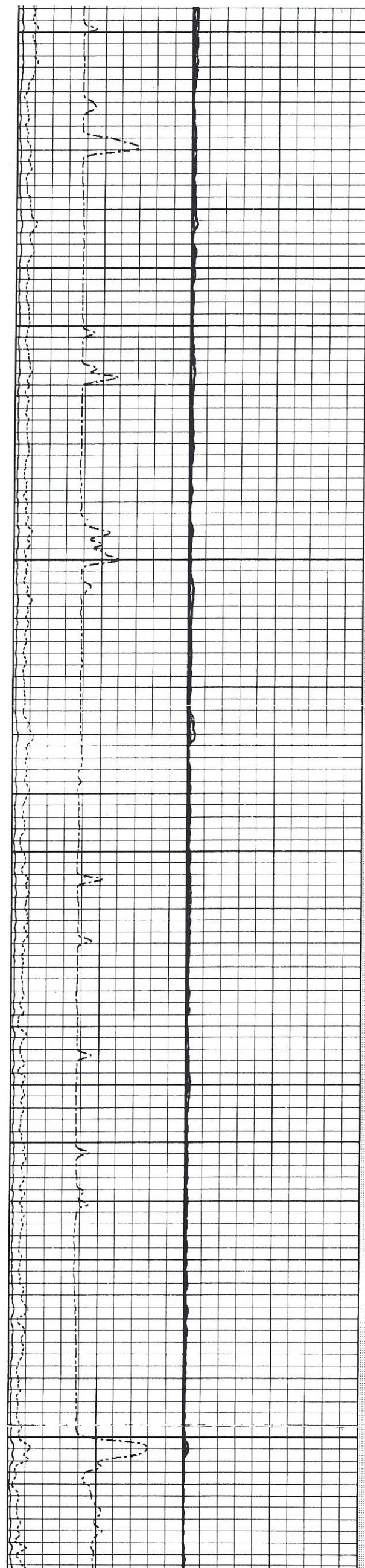


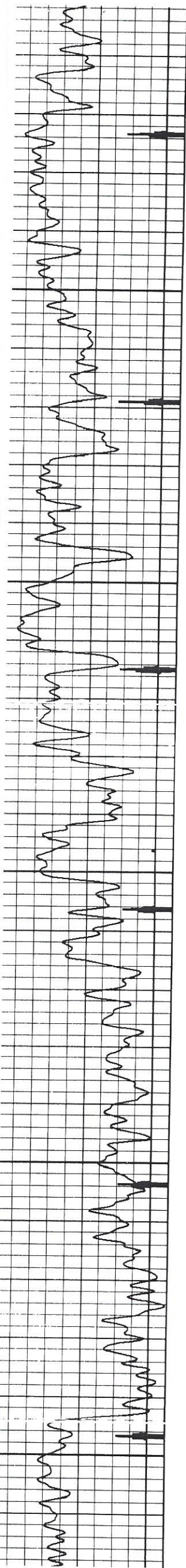
250
300
350
400
450



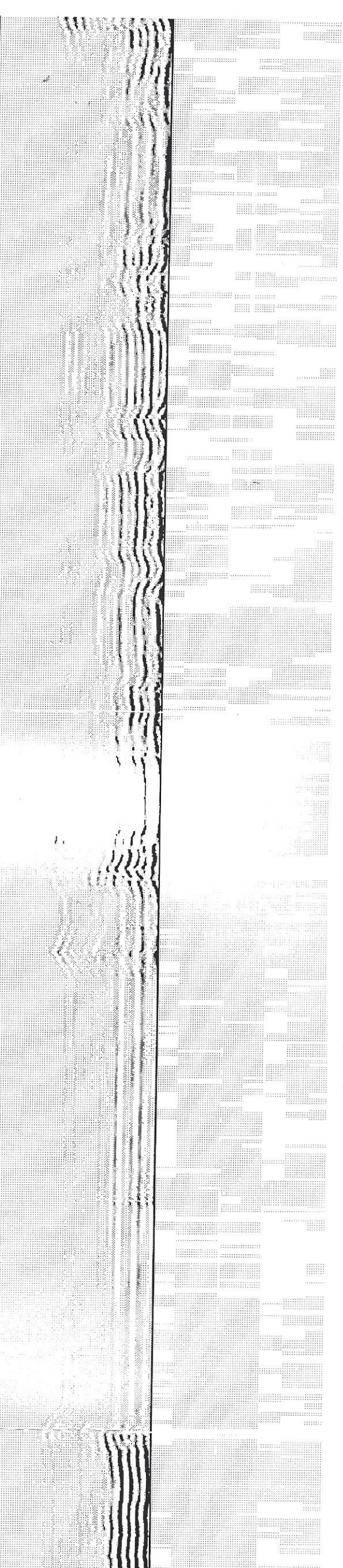
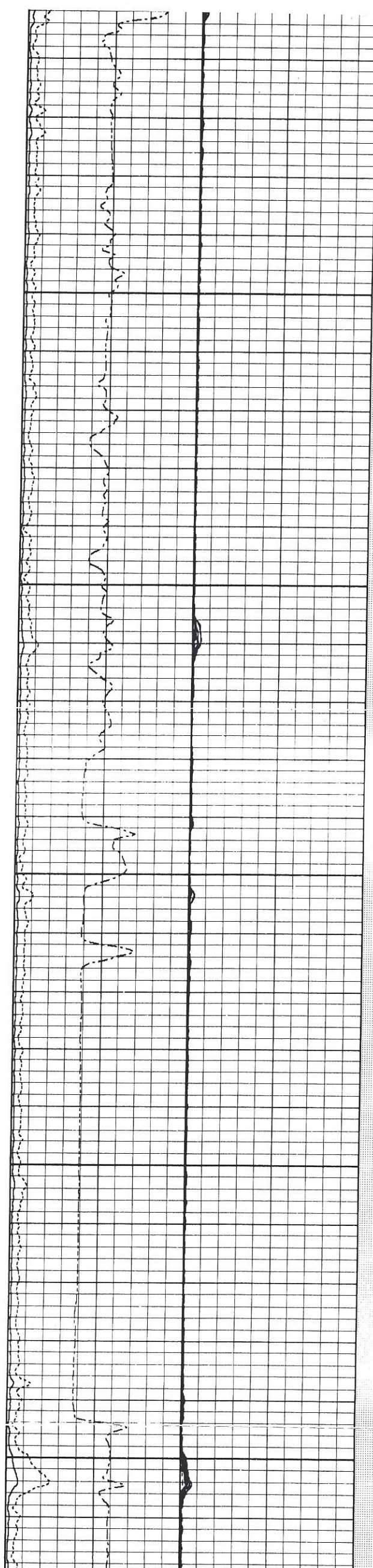


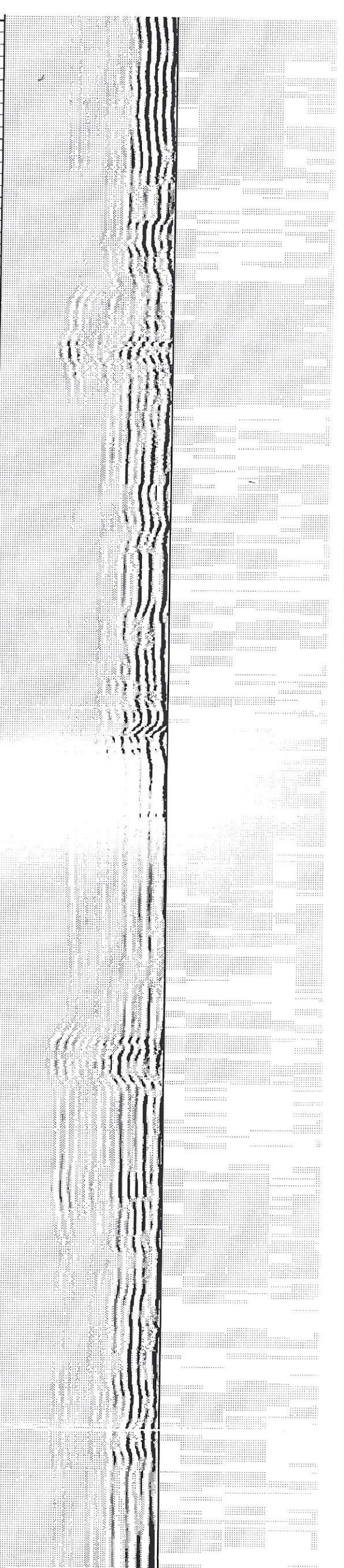
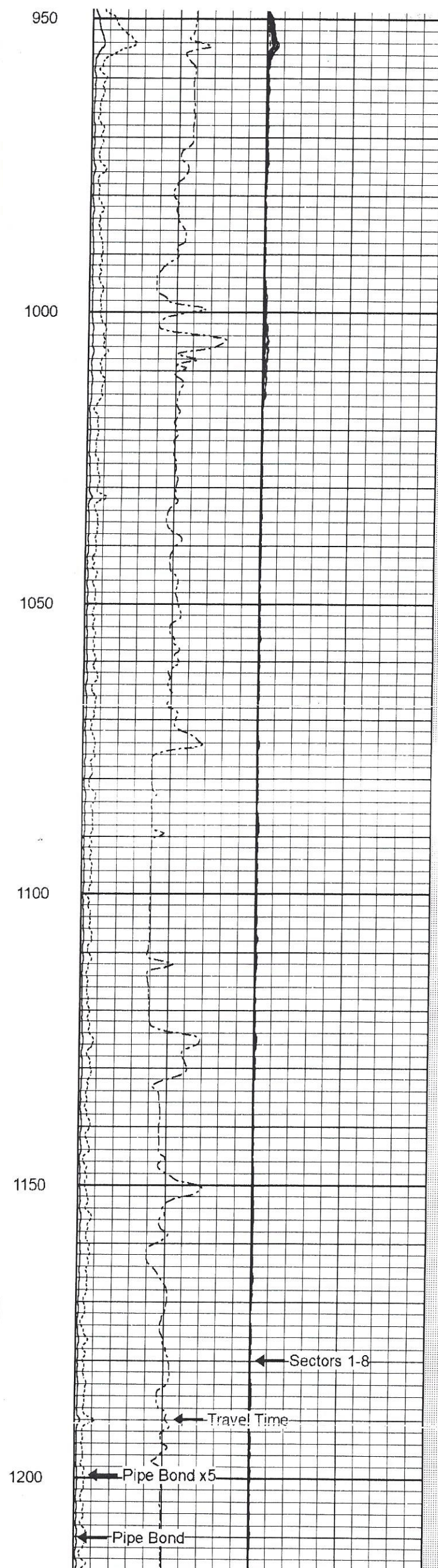
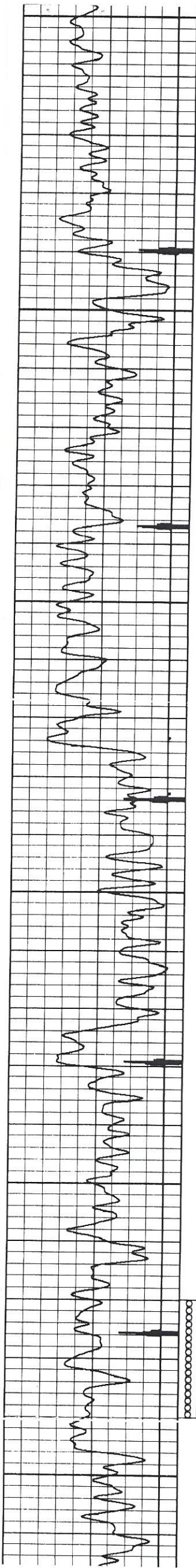
500
550
600
650
700



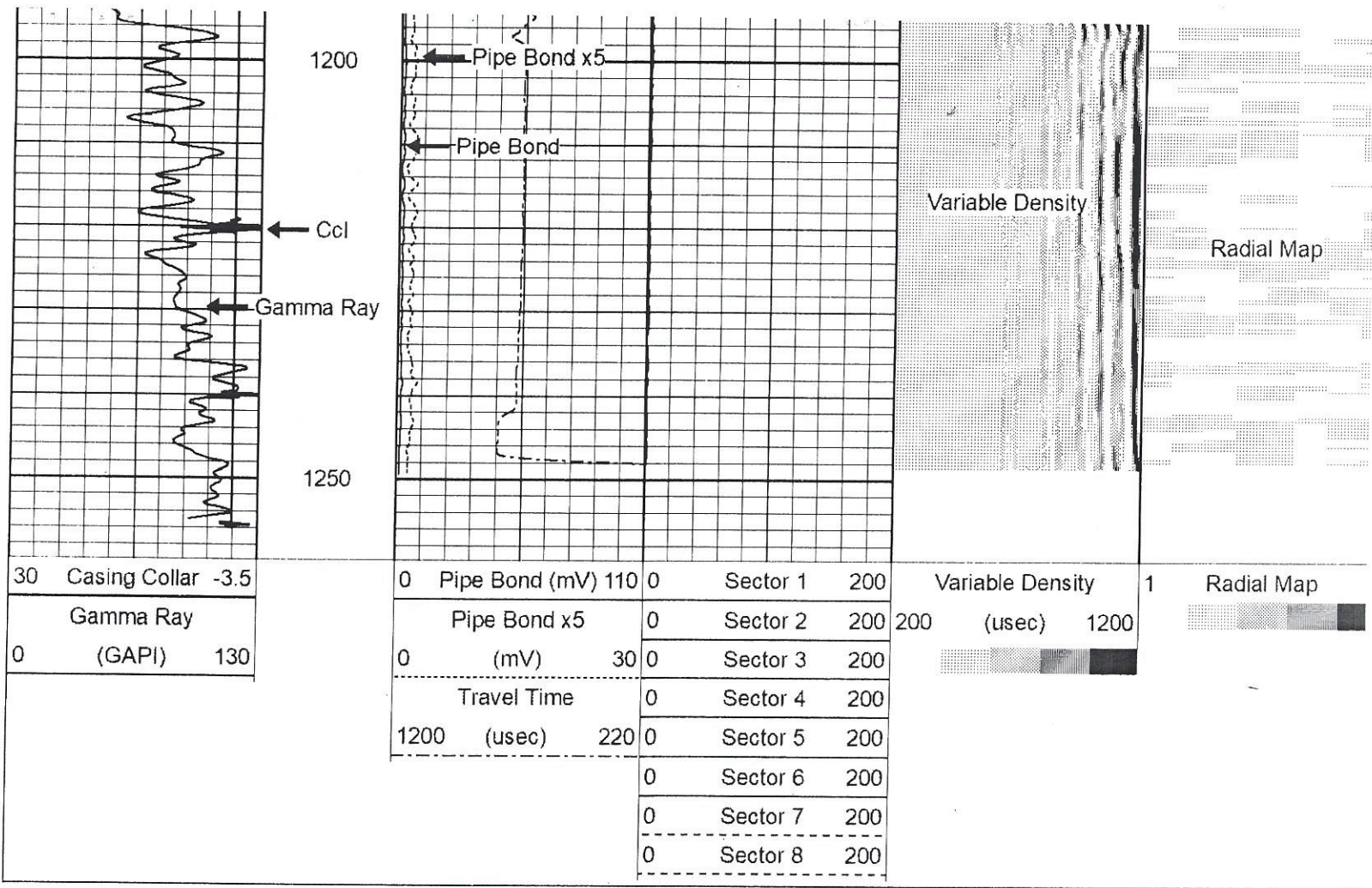


750
800
850
900
950





Variable Density



30	Casing Collar	-3.5	0	Pipe Bond (mV)	110	0	Sector 1	200	Variable Density (usec)	1	Radial Map
	Gamma Ray			Pipe Bond x5	0	0	Sector 2	200			
0	(GAPI)	130	0	(mV)	30	0	Sector 3	200			
				Travel Time	0	0	Sector 4	200			
			1200	(usec)	220	0	Sector 5	200			
						0	Sector 6	200			
						0	Sector 7	200			
						0	Sector 8	200			

Sensor	Offset (ft)	Schematic	Description	Length (ft)	O.D. (in)	Weight (l)	
			CENT-SDSCENT Centralizer	3.00	3.25	20.00	
			CHD-STNDRD Standard Cable Head	1.00	1.69	10.00	
WVFS8	11.97			RBT-Probe (070566) Prototype Probe Radii Bond Tool with Digital Telemetry	8.75	2.75	90.00
WVFS7	11.97						
WVFS6	11.97						
WVFS5	11.97						
WVFS4	11.97						
WVFS3	11.97						
WVFS2	11.97						
WVFS1	11.97						
WVFCAL	11.97		CENT-SDSCENT Centralizer	3.00	3.25	20.00	
WVF3FT	11.97						
WVF5FT	10.97						
CCL	3.88						
GR	2.54		GR_CCL-PRBSIXPINOLDSTYLE (970904) PROBE 2 3/4" GR/CCL OLD STYLE SIX PIN(RUN W/NEUTRON)	4.78	2.75	57.00	

Dataset: 6398-ow4rbl kansasa energy bird 2.db: field/well/run1/pass1
 Total length: 20.53 ft
 Total weight: 197.00 lb
 O.D.: 3.25 in