



**COMPENSATED  
DENSITY/NEUTRON  
PE LOG**

Company EDISON OPERATING COMPANY, LLC.  
Well SHORE TRUST #1-28  
Field GOBIN  
County STAFFORD  
State KANSAS

Company EDISON OPERATING COMPANY, LLC.  
Well SHORE TRUST #1-28  
Field GOBIN  
County STAFFORD State KANSAS

Location: API #: 15-185-24111-0000  
2310' FSL & 330' FEL  
NE - NE - SE  
SEC 28 TWP 25S RGE 13W  
Permanent Datum GROUND LEVEL Elevation 1932  
Log Measured From KELLY BUSHING 10' A.G.L.  
Drilling Measured From KELLY BUSHING  
Other Services  
DILMEL  
SONIC  
Elevation  
K.B. 1942  
D.F. 1940  
G.L. 1932

Date	7/1/22		
Run Number	ONE		
Depth Driller	4400		
Depth Logger	4402		
Bottom Logged Interval	4378		
Top Log Interval	3000		
Casing Driller	8 5/8"@376'		
Casing Logger	376		
Bit Size	7 7/8		
Type Fluid in Hole	CHEMICAL MUD	CHLORIDES 9,000 PPM	
Density / Viscosity	9.5/56		
pH / Fluid Loss	10.0/8.4		
Source of Sample	FLOWLINE		
Rm @ Meas. Temp	.700@80F		
Rmt @ Meas. Temp	.525@80F		
Rmc @ Meas. Temp	.840@80F		
Source of Rmf / Rmc	MEASUREMENT		
Rm @ BHT	.467@120F		
Time Circulation Stopped	2.5 HOURS		
Time Logger on Bottom	2:30 P.M.		
Maximum Recorded Temperature	120F		
Equipment Number	3802		
Location	HAYS, KANSAS		
Recorded By	COLE ROBBEN		
Witnessed By	DEREK PATTERSON		

<<< Fold Here >>>

All interpretations are opinions based on inferences from electrical or other measurements and we cannot and do not guarantee the accuracy or correctness of any interpretation, and we shall not, except in the case of gross or willful negligence on our part, be liable or responsible for any loss, costs, damages, or expenses incurred or sustained by anyone resulting from any interpretation made by any of our officers, agents or employees. These interpretations are also subject to our general terms and conditions set out in our current Price Schedule.

Comments

THANK YOU FOR USING ELI WIRELINE SERVICES, HAYS, KS. ( 785 ) 628-6395  
DIRECTIONS

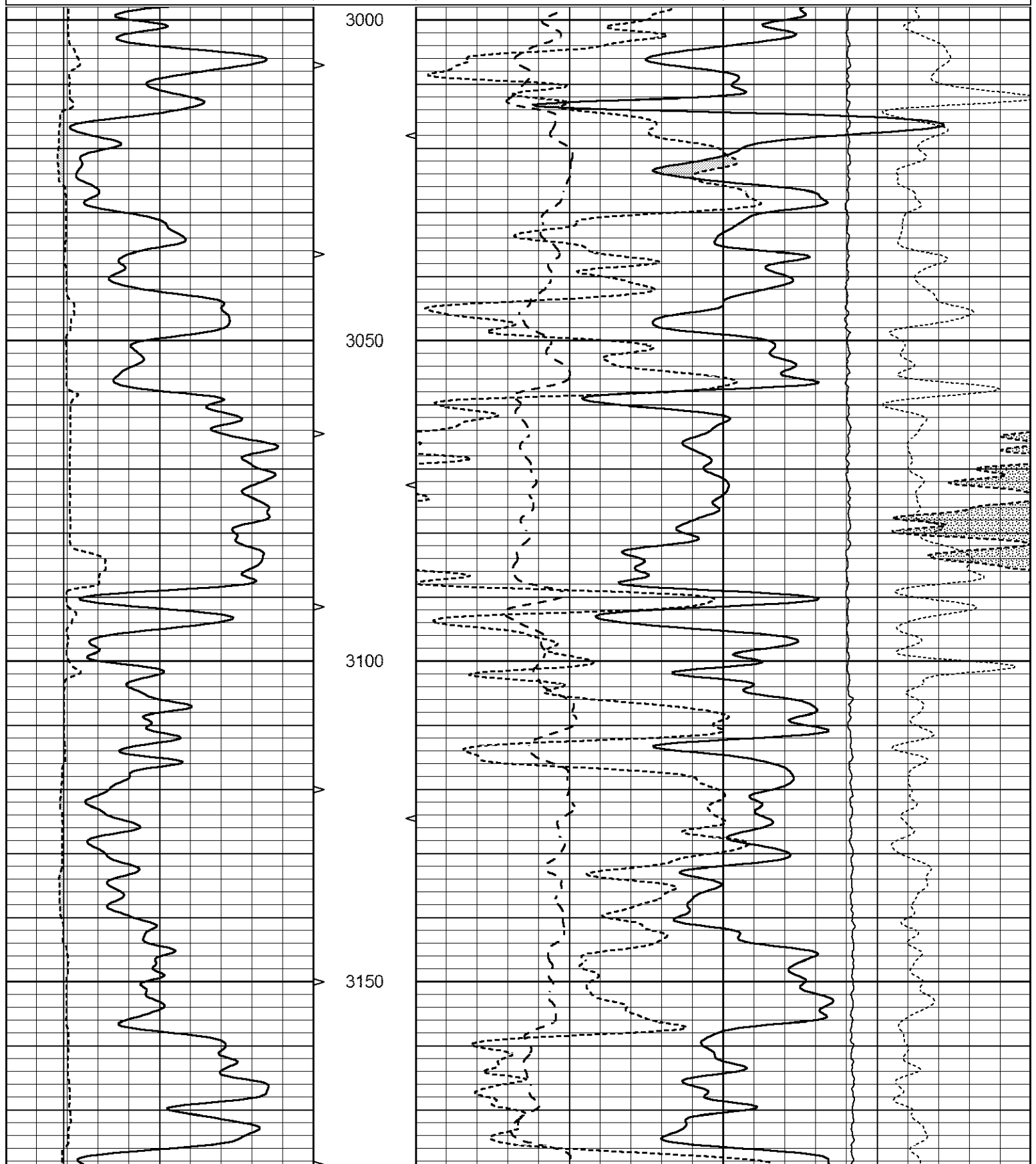
GREAT BEND, KANSAS SOUTH TO HIGHWAY 281 & HIGHWAY 50 ROUNDABOUT,  
7.5 MILES SOUTH ON HIGHWAY 281, WEST INTO

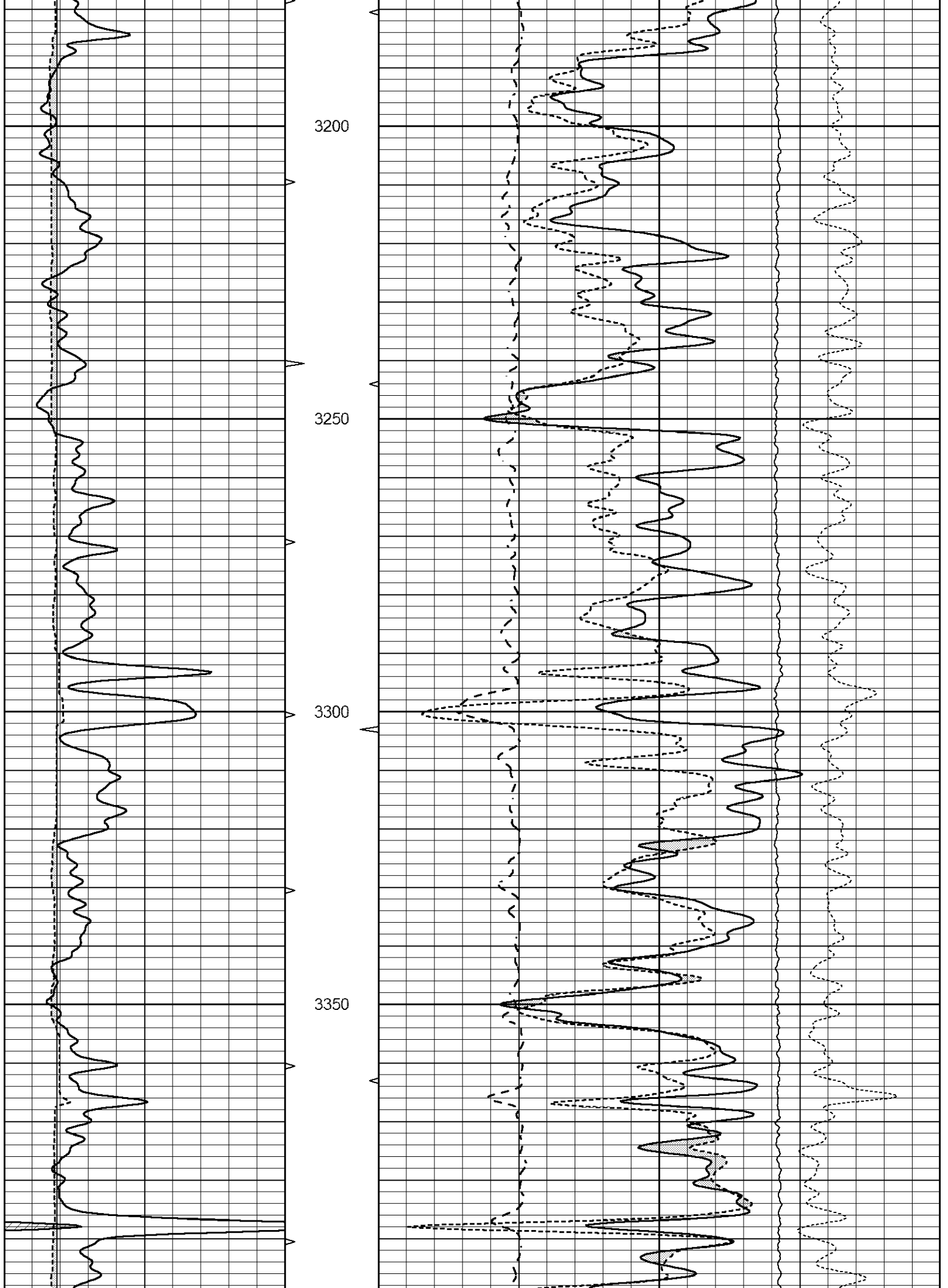


# MAIN SECTION

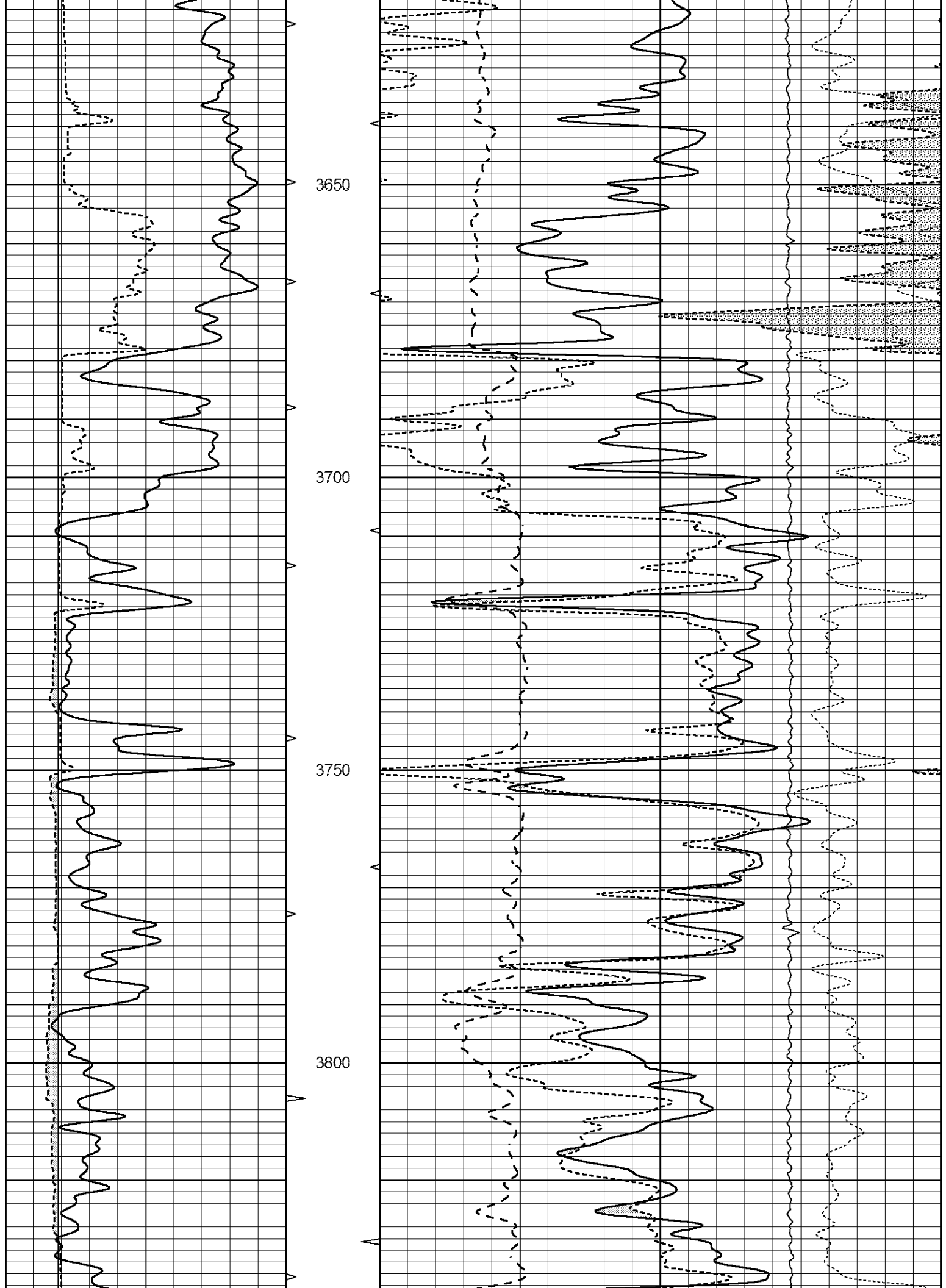
Database File 6751pe.db  
 Dataset Pathname pass4.1POR  
 Presentation Format ldt\_neu  
 Dataset Creation Fri Jul 01 17:25:24 2022  
 Charted by Depth in Feet scaled 1:240

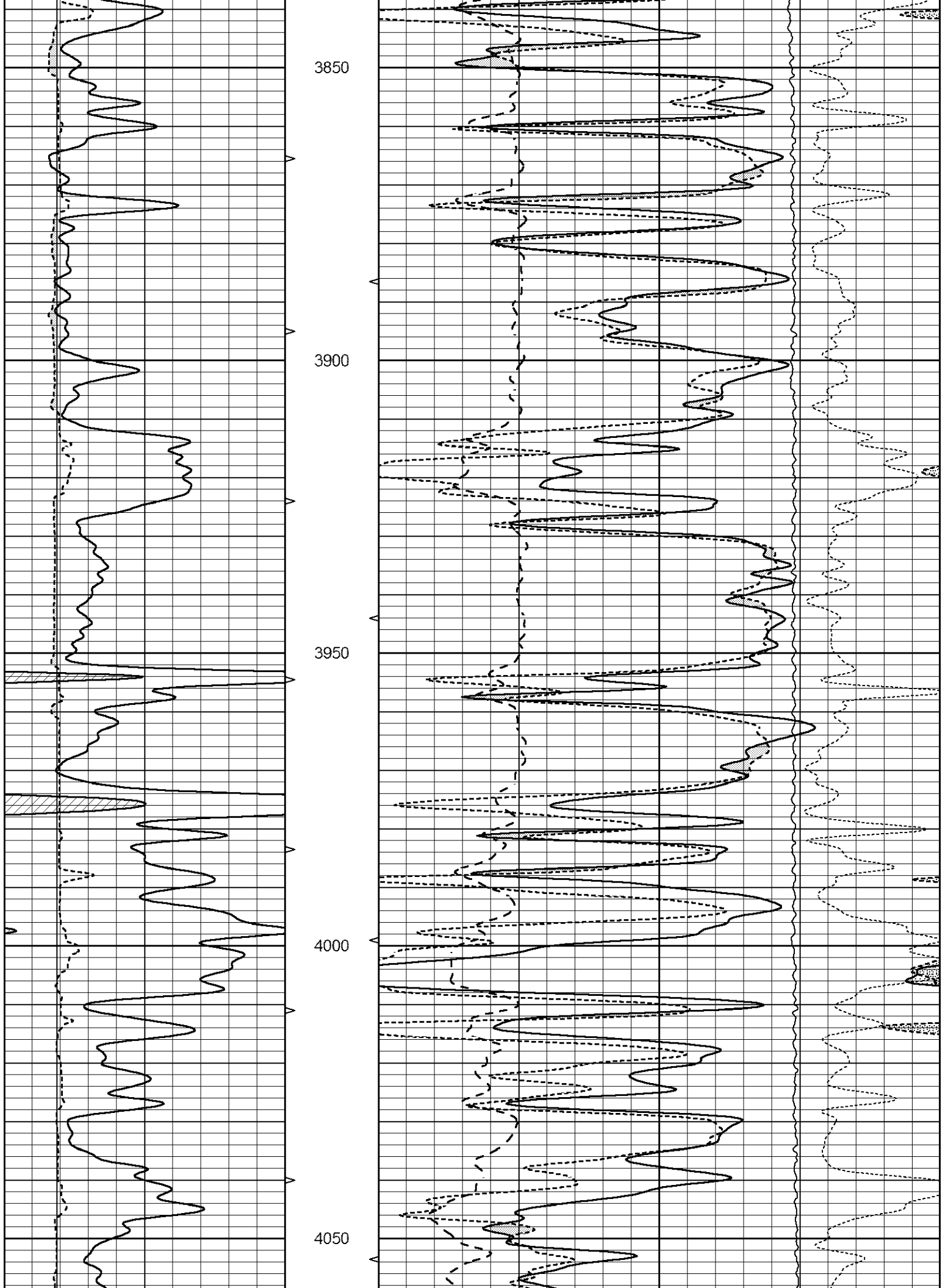
0	GAMMA RAY (GAPI)	150	ABHV	30	COMPENSATED DENSITY (pu)	-10
6	CALIPER (in)	16	10 (ft3)	0	COMPENSATED NEUTRON (pu)	-10
			TBHV	0	PE	10
			0 (ft3)	10	LTEN (lb)	5000
					-0.25	CORRECTION (g/cc)
					0.25	

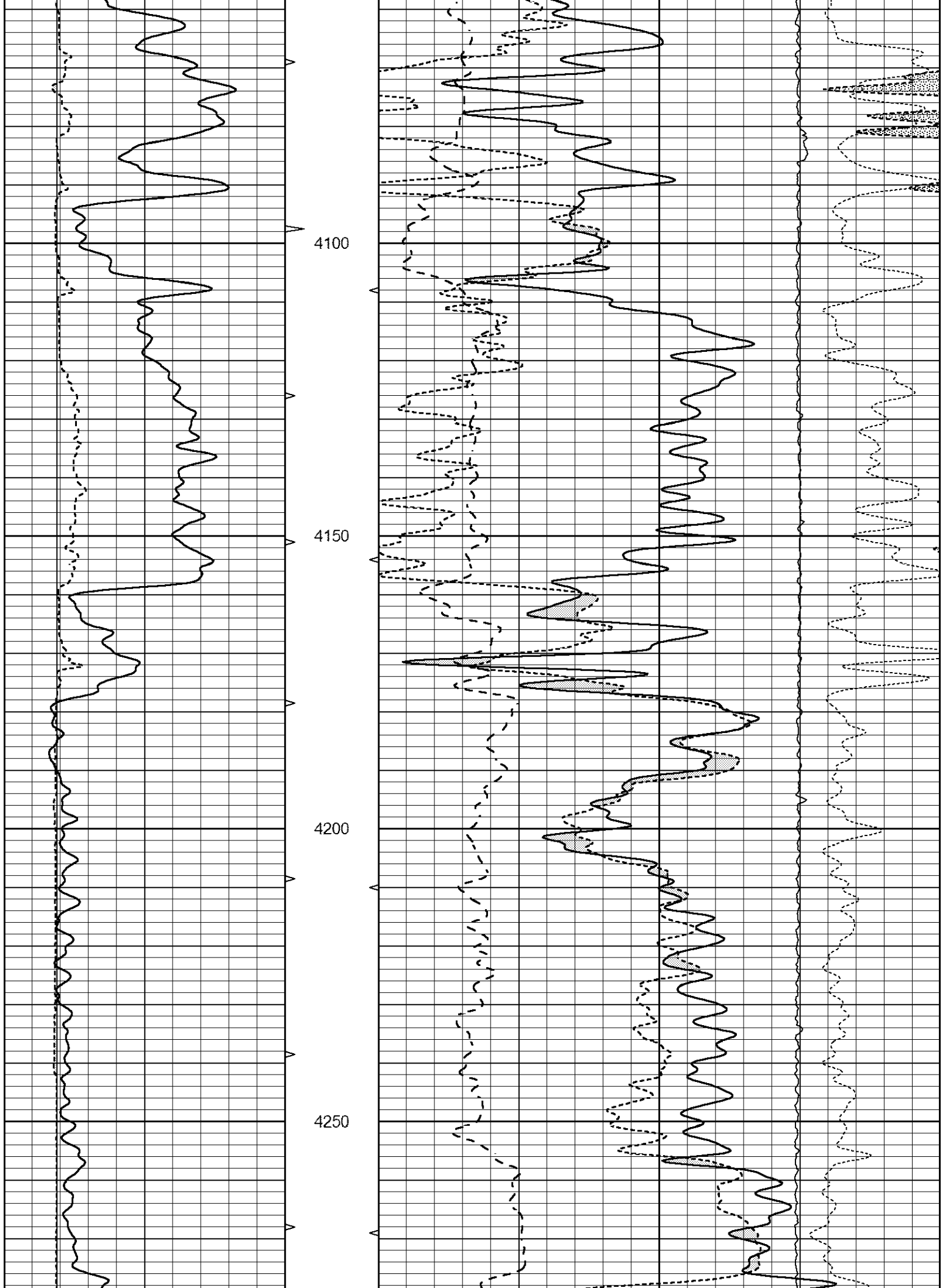


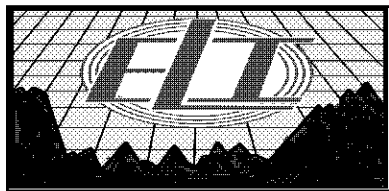
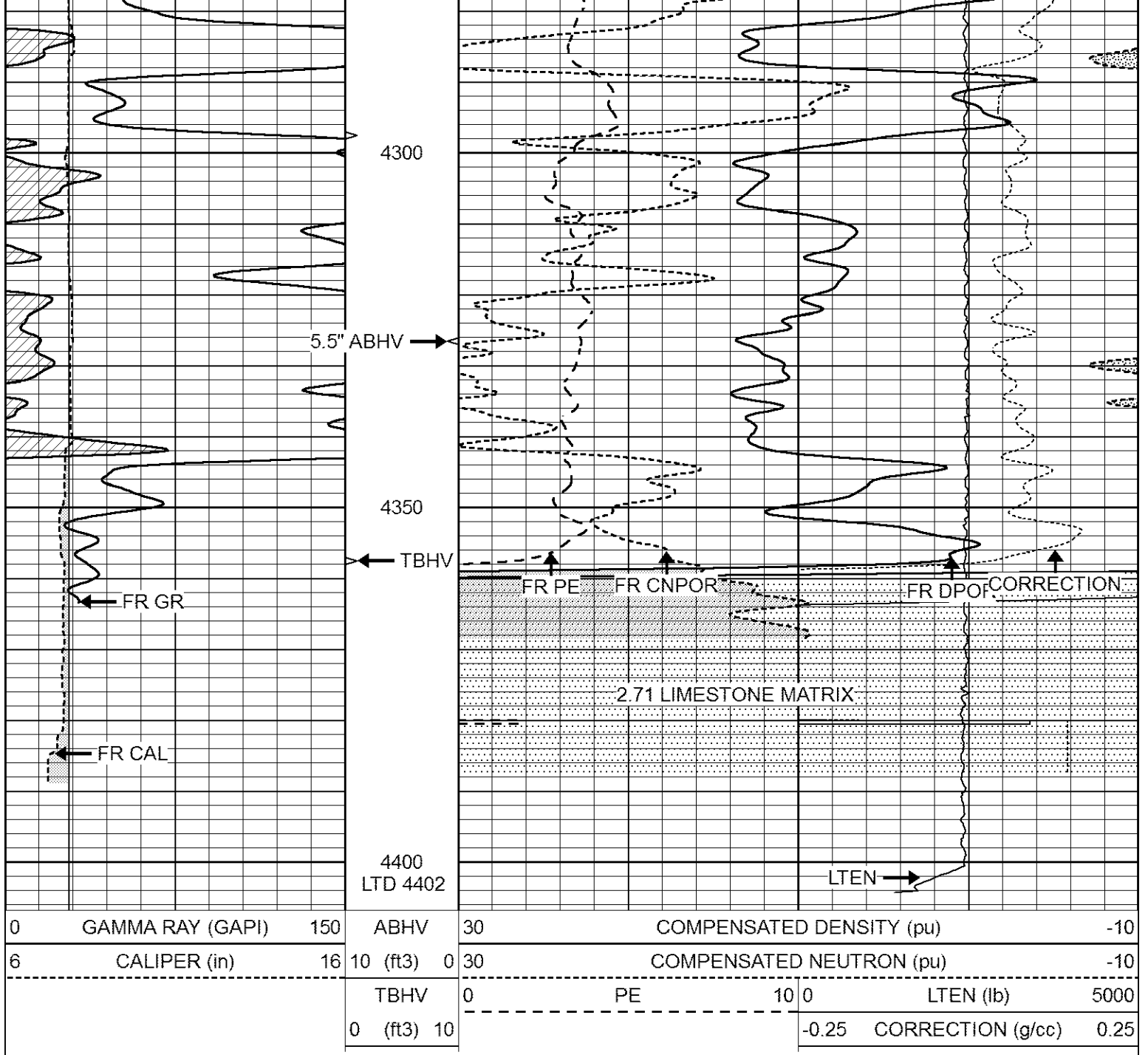








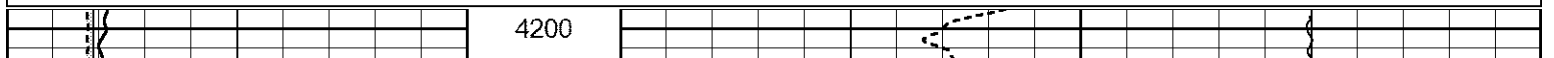


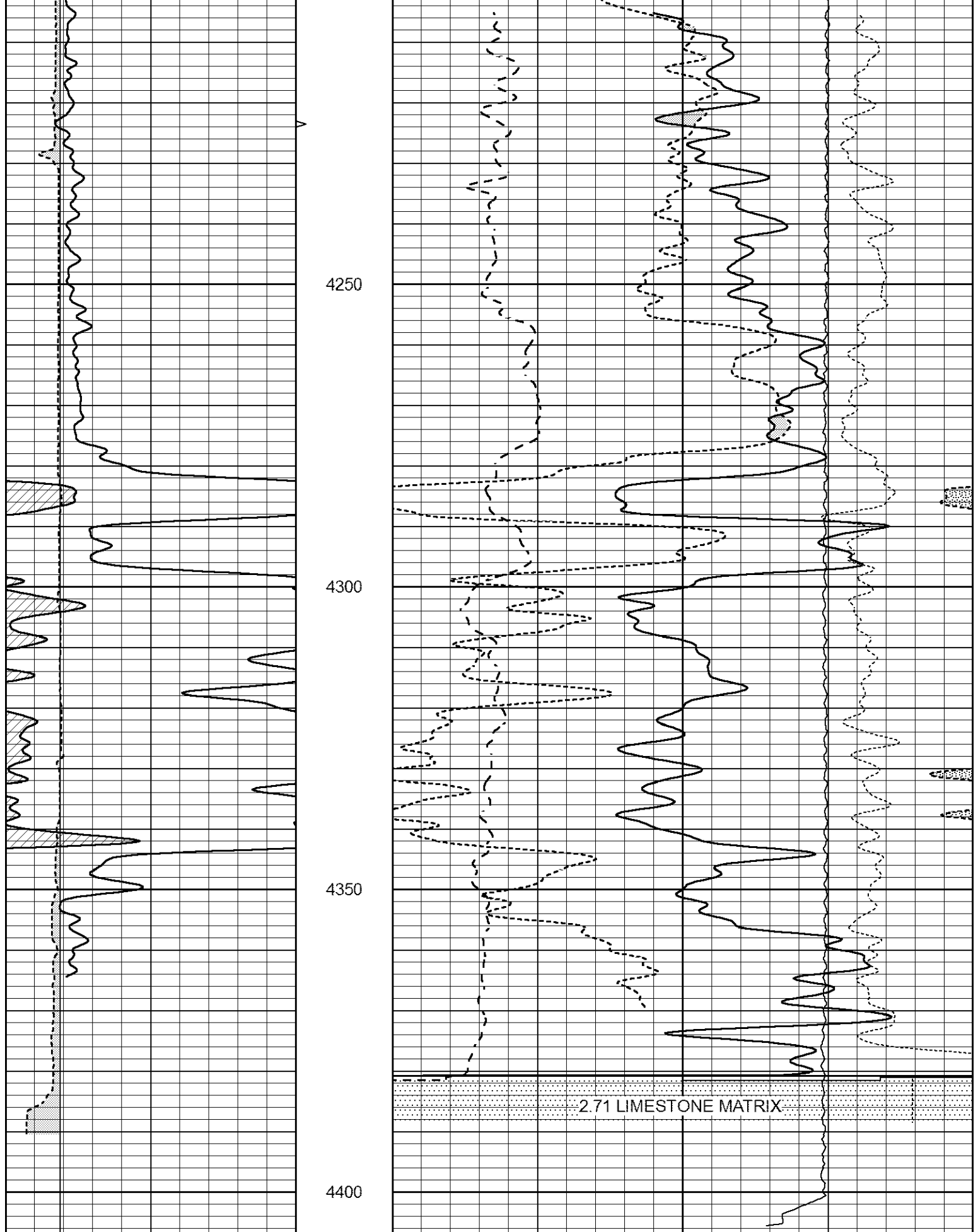


# LIMESTONE MATRIX REPEAT

Database File 6751pe.db  
 Dataset Pathname pass3.L2  
 Presentation Format ldt\_neu  
 Dataset Creation Fri Jul 01 17:01:58 2022  
 Charted by Depth in Feet scaled 1:240

0	GAMMA RAY (GAPI)	150	ABHV	30	COMPENSATED DENSITY (pu)	-10
6	CALIPER (in)	16	10 (ft3) 0	30	COMPENSATED NEUTRON (pu)	-10
			TBHV	0	PE	10 0
			0 (ft3) 10			LTEN (lb) 5000
					-0.25	CORRECTION (g/cc) 0.25





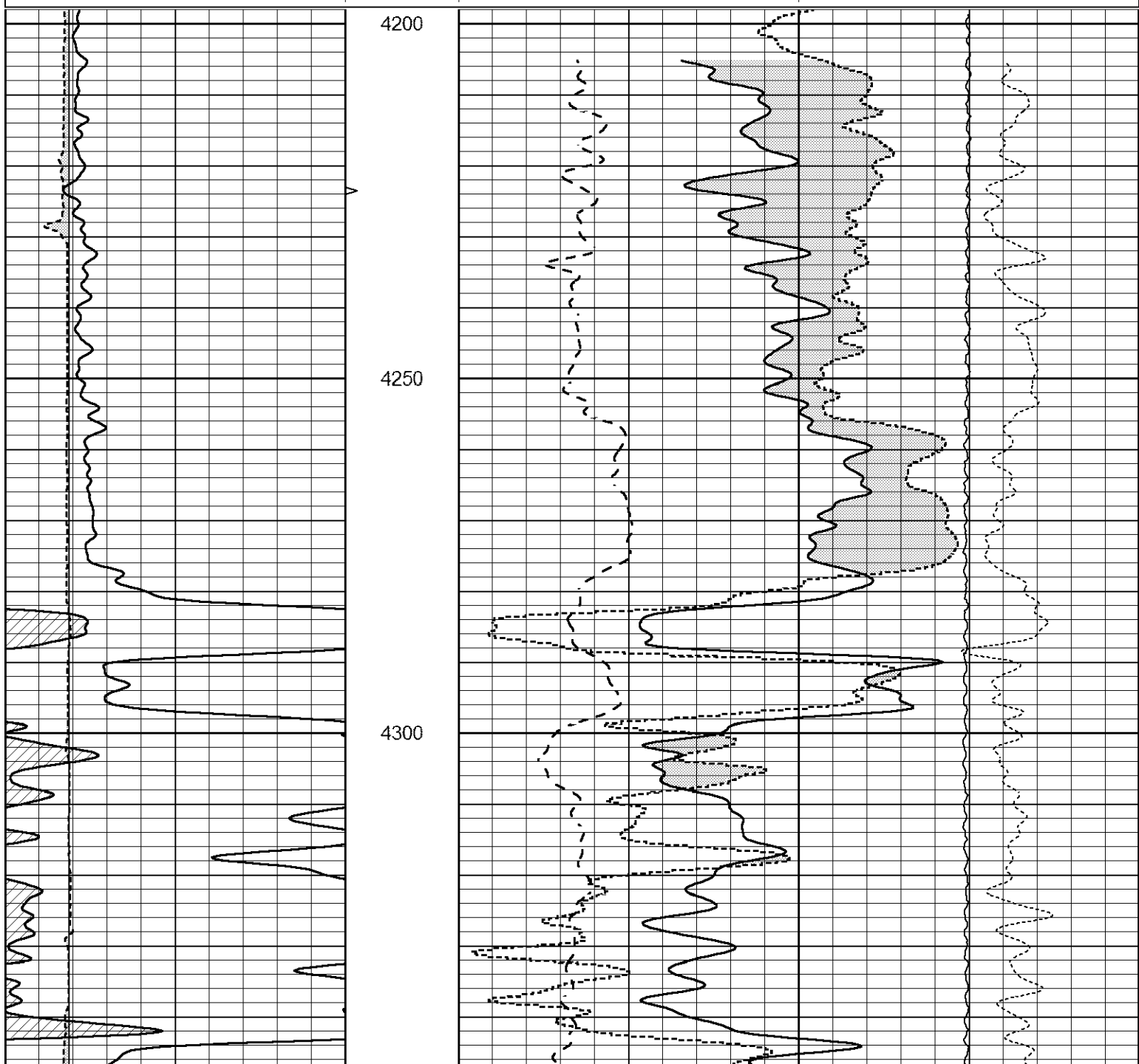
0	GAMMA RAY (GAPI)	150	ABHV	30	COMPENSATED DENSITY (pu)	-10
6	CALIPER (in)	16	10 (ft3)	0 30	COMPENSATED NEUTRON (pu)	-10
-----			TBHV	0	PE	10 0
-----					LTEN (lb)	5000



# DOLOMITE MATRIX REPEAT

Database File 6751pe.db  
 Dataset Pathname pass3.D2  
 Presentation Format ldt\_neu  
 Dataset Creation Fri Jul 01 16:59:39 2022  
 Charted by Depth in Feet scaled 1:240

0	GAMMA RAY (GAPI)	150	ABHV	30	COMPENSATED DENSITY (pu)	-10
6	CALIPER (in)	16	10 (ft3) 0	30	COMPENSATED NEUTRON (pu)	-10
			TBHV	0	PE	10 0
			0 (ft3) 10		LTEN (lb)	5000
					-0.25	CORRECTION (g/cc) 0.25





Deep	0.000	0.000	mmho/m	-0.824	395.917	mmho/m	1.000	0.000
Medium	0.000	0.000	mmho/m	3.565	471.327	mmho/m	1.000	0.000
LL3		0.000	Ohm-m		1500.000	Ohm-m		
		0.000	Ohm-m		20.000	Ohm-m		
		0.000	mmho-m		3745.000	mmho-m		

Litho Density Calibration Report  
Serial: 140704  
Model: V4\_10P  
Source Number: 74GBq-19

Master Calibration				Performed: Mon May 23 14:22:47 2022			
	<u>Background</u>	<u>Aluminum</u>	<u>Magnesium</u>				
Window 1	511.07	5437.36	23664.68			cps	
Window 2	40.76	1220.39	5745.34			cps	
Window 4	223.73	1233.64	5301.27			cps	
Window 5	531.57	7878.13	15405.81			cps	
Window 6	48.52	1245.17	2497.97			cps	
Window 8	246.02	2578.14	4974.07			cps	
Bulk Density	-	2.6020	1.6830			g/cc	
Pe	-	3.0000	2.5070			b/e	
LS Alpha:	: -1.8413	SS Alpha:	: -0.8034	LS CPE:		: 1.1579	
LS Beta:	: 124864.8423	SS Beta:	: 19537.1506	SS CPE:		: 1.6371	

Before Survey Background Counts Verification				Performed: Wed Dec 31 18:00:00 1969			
Window 1	0.00		cps				
Window 2	0.00		cps				
Window 4	0.00		cps				
Window 5	0.00		cps				
Window 6	0.00		cps				
Window 8	0.00		cps				

After Survey Background Counts Verification				Performed: Wed Dec 31 18:00:00 1969			
Window 1	0.00		cps				
Window 2	0.00		cps				
Window 4	0.00		cps				
Window 5	0.00		cps				
Window 6	0.00		cps				
Window 8	0.00		cps				

Lithodensity Caliper Calibration				Performed: Mon May 23 14:22:47 2022			
Results	Readings		References (in)				
	<u>Low</u>	<u>High</u>	<u>Low</u>	<u>High</u>	<u>Gain</u>	<u>Offset</u>	
	8210.8	12139.3	7.0	14.0	0.0	-7.3	

Before Survey Caliper Verification				Performed:			
	<u>Reference</u>	<u>Reading</u>					
Caliper (in)							

After Survey Caliper Verification				Performed:			
-----------------------------------	--	--	--	------------	--	--	--

	Reference	Reading
Caliper (in)	_____	_____

Compensated Neutron Calibration Report

Serial Number:	080621PMC
Tool Model:	NABORS

PRE-SURVEY VERIFICATION			
Detector	Readings	Measured	Target
Short Space	cps		
Long Space	cps	pu	pu

POST-SURVEY VERIFICATION			
Detector	Readings	Measured	Target
Short Space	cps		
Long Space	cps	pu	pu

Gamma Ray Calibration Report

Serial Number:	7	
Tool Model:	Probe1	
Performed:	Thu May 26 08:56:46 2022	
Calibrator Value:	1.0	GAPI
Background Reading:	0.0	cps
Calibrator Reading:	1.0	cps
Sensitivity:	0.5500	GAPI/cps