



**SONIC
LOG**

Company EDISON OPERATING COMPANY, LLC.
Well SHORE TRUST #1-28
Field GOBIN
County STAFFORD
State KANSAS

Company EDISON OPERATING COMPANY, LLC.
Well SHORE TRUST #1-28
Field GOBIN
County STAFFORD State KANSAS

Location: API #: 15-185-24111-0000
2310' FSL & 330' FEL
NE - NE - SE
SEC 28 TWP 25S RGE 13W
Permanent Datum GROUND LEVEL Elevation 1932
Log Measured From KELLY BUSHING 10' A.G.L.
Drilling Measured From KELLY BUSHING
Other Services
CDL/CNL/PE
DIL/MEL
Elevation
K.B. 1942
D.F. 1940
G.L. 1932

| | | | |
|------------------------------|-----------------|---------------------|--|
| Date | 7/1/22 | | |
| Run Number | TWO | | |
| Depth Driller | 4400 | | |
| Depth Logger | 4402 | | |
| Bottom Logged Interval | 3994 | | |
| Top Log Interval | 350 | | |
| Casing Driller | 8 5/8"@376' | | |
| Casing Logger | 376 | | |
| Bit Size | 7 7/8 | | |
| Type Fluid in Hole | CHEMICAL MUD | CHLORIDES 9,000 PPM | |
| Density / Viscosity | 9.5/56 | | |
| pH / Fluid Loss | 10.0/8.4 | | |
| Source of Sample | FLOWLINE | | |
| Rm @ Meas. Temp | .700@80F | | |
| Rmt @ Meas. Temp | .525@80F | | |
| Rmc @ Meas. Temp | .840@80F | | |
| Source of Rmf / Rmc | MEASUREMENT | | |
| Rm @ BHT | .467@120F | | |
| Time Circulation Stopped | 4.5 HOURS | | |
| Time Logger on Bottom | 4:30 P.M. | | |
| Maximum Recorded Temperature | 120F | | |
| Equipment Number | 3802 | | |
| Location | HAYS, KANSAS | | |
| Recorded By | COLE ROBBEN | | |
| Witnessed By | DEREK PATTERSON | | |

<<< Fold Here >>>

All interpretations are opinions based on inferences from electrical or other measurements and we cannot and do not guarantee the accuracy or correctness of any interpretation, and we shall not, except in the case of gross or willful negligence on our part, be liable or responsible for any loss, costs, damages, or expenses incurred or sustained by anyone resulting from any interpretation made by any of our officers, agents or employees. These interpretations are also subject to our general terms and conditions set out in our current Price Schedule.

Comments

THANK YOU FOR USING ELI WIRELINE SERVICES, HAYS, KS. (785) 628-6395
DIRECTIONS

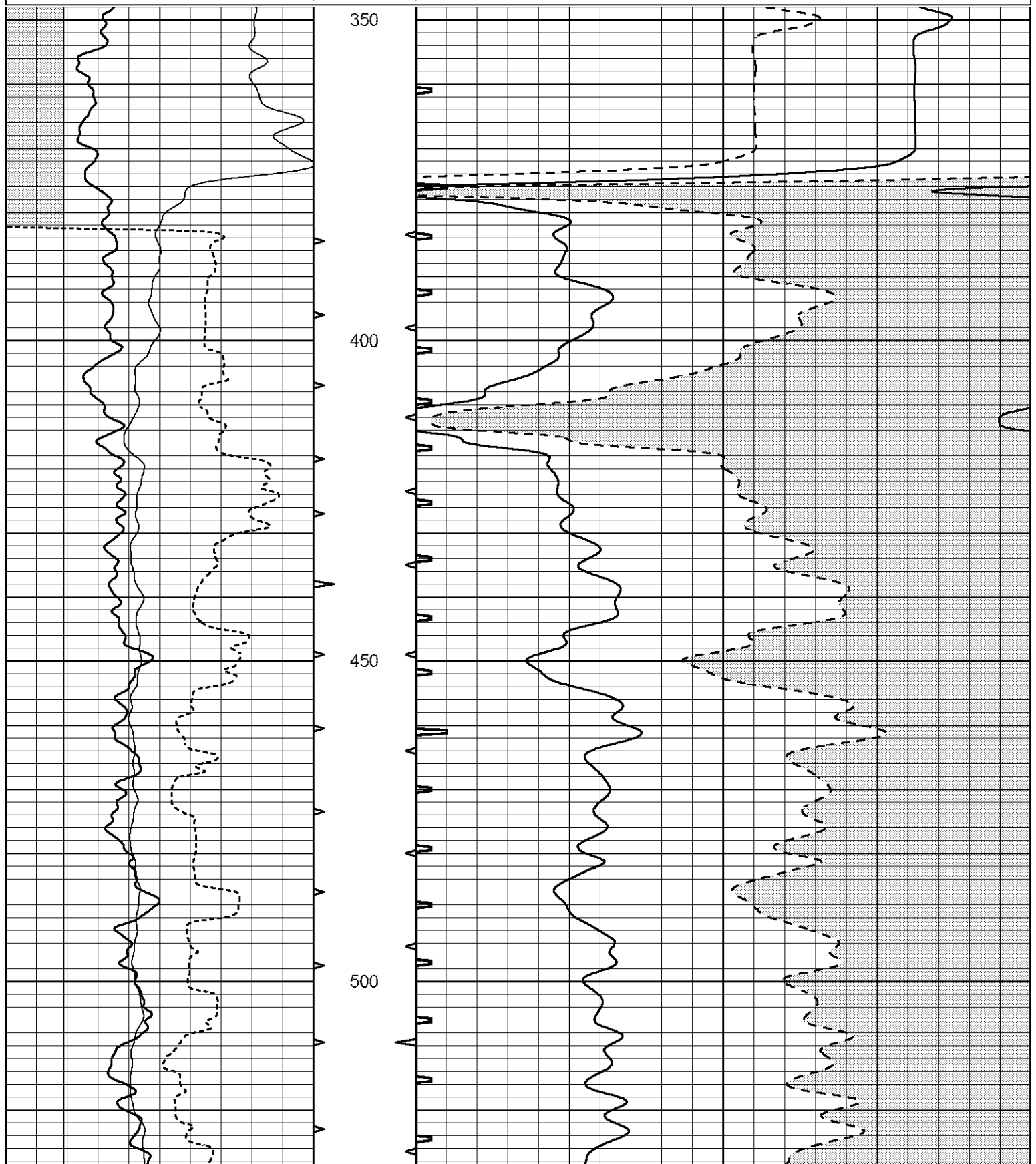
GREAT BEND, KANSAS SOUTH TO HIGHWAY 281 & HIGHWAY 50 ROUNDABOUT,
7.5 MILES SOUTH ON HIGHWAY 281, WEST INTO

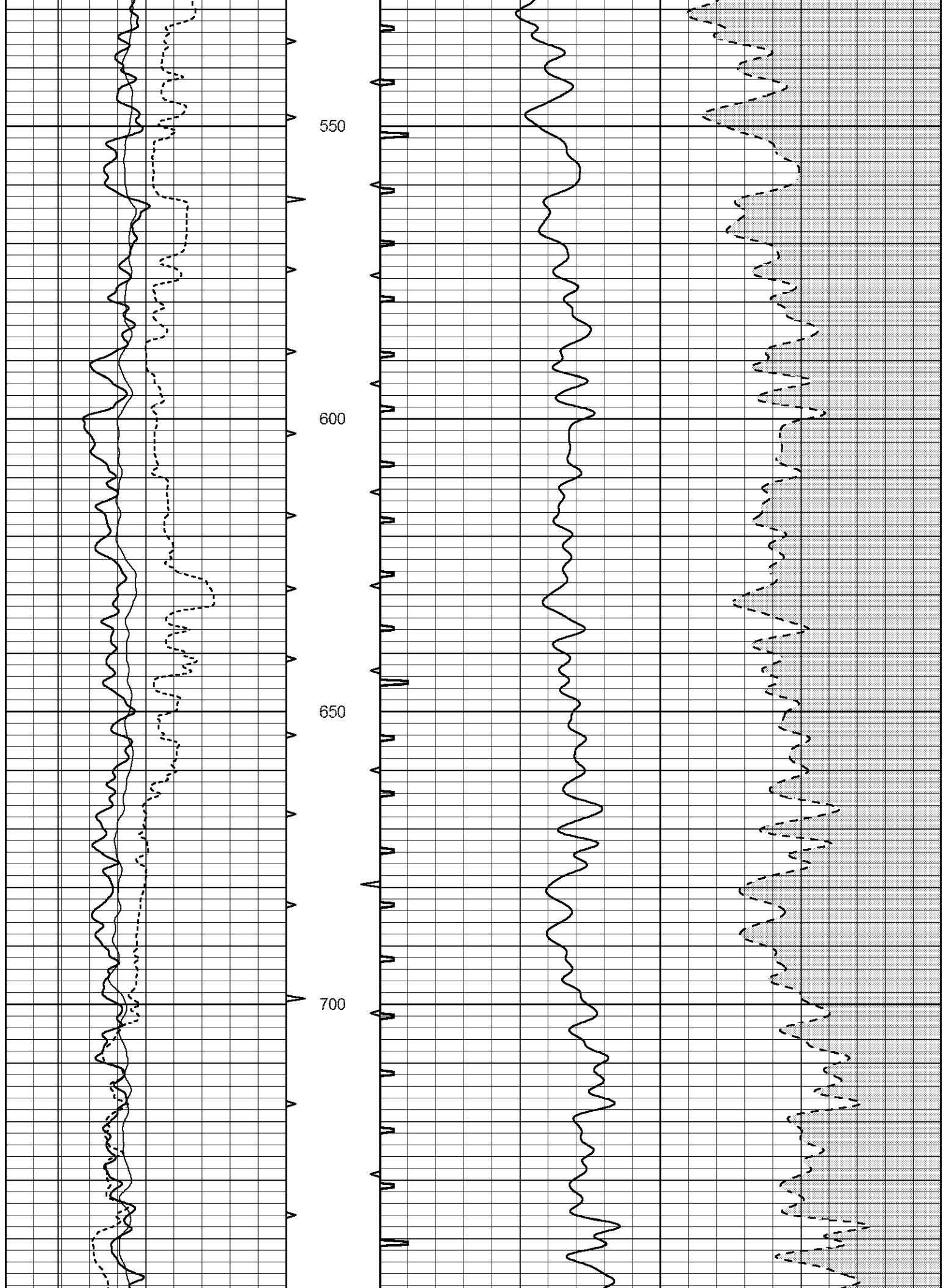


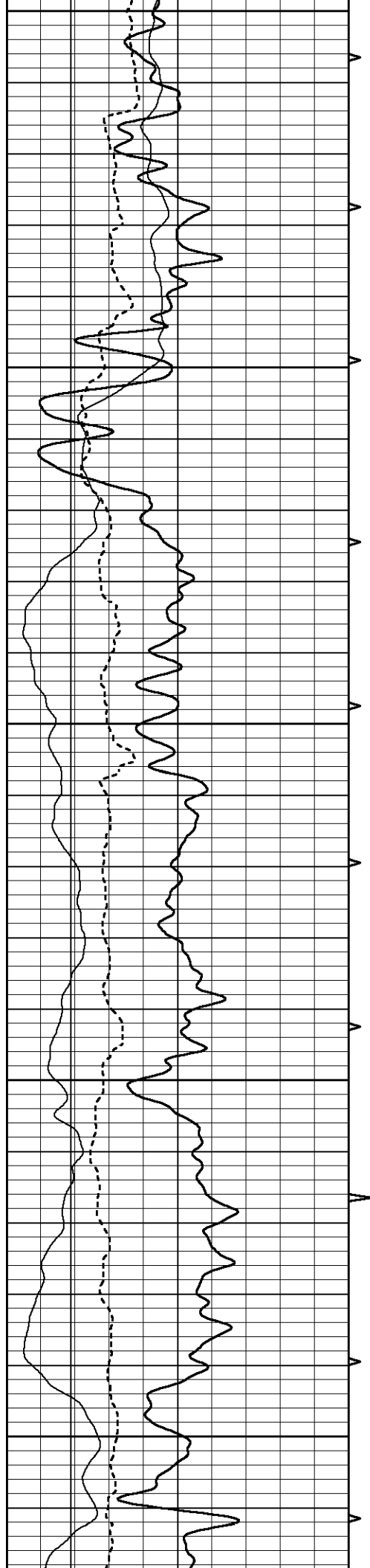
MAIN SECTION

Database File 6751pe.db
 Dataset Pathname pass11.1SON2
 Presentation Format _slt
 Dataset Creation Fri Jul 01 18:19:48 2022
 Charted by Depth in Feet scaled 1:240

| | | | | | | | |
|---|------------------|-----|----------|-----|----------------------|---------------------|-----|
| 0 | GAMMA RAY (GAPI) | 150 | ABHV | 140 | DELTA TIME (usec/ft) | 40 | |
| 6 | CALIPER (in) | 16 | 10 (ft3) | 0 | 30 | SONIC POROSITY (pu) | -10 |
| 0 | SP (mV) | 100 | TBHV | 0 | ITT (msec) | 20 | |
| | | | 0 (ft3) | 10 | | | |







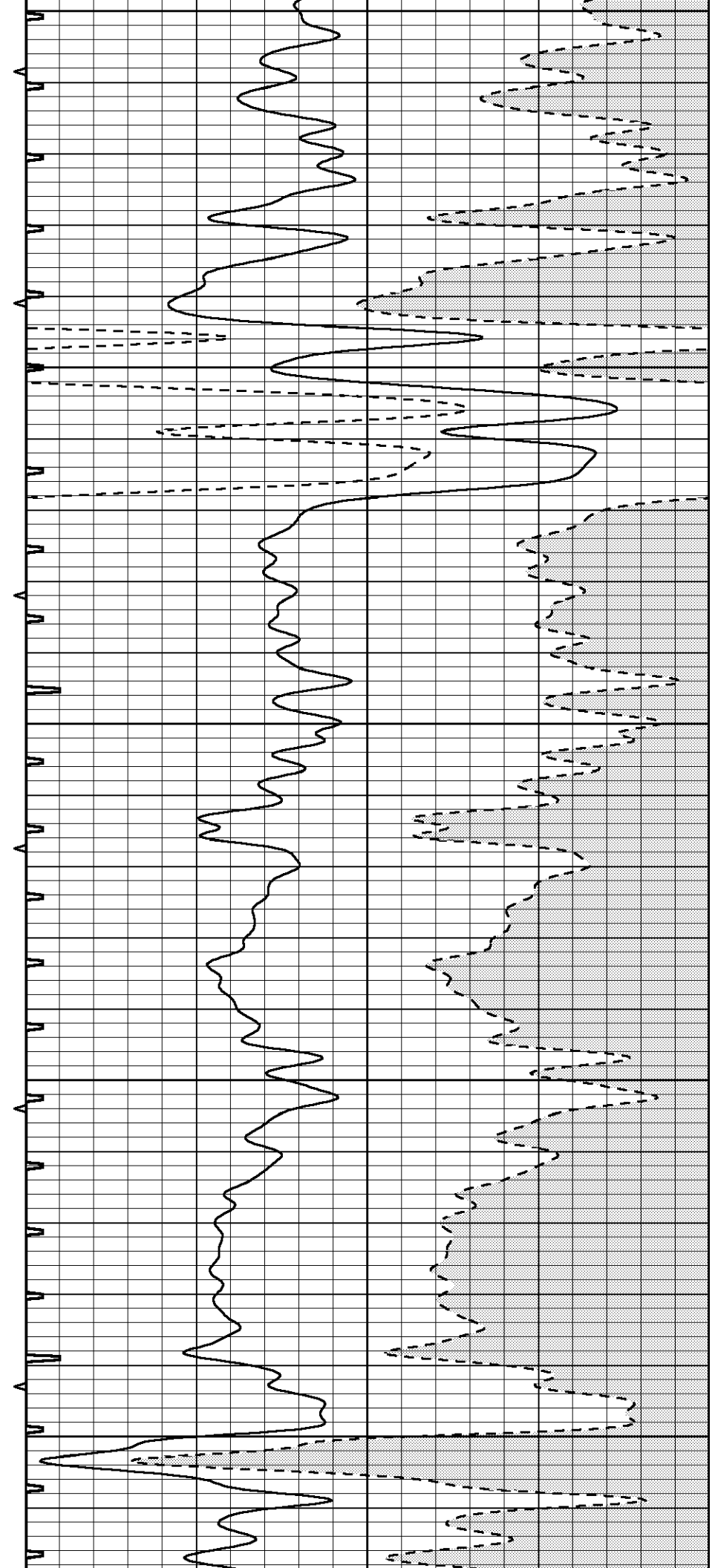
750

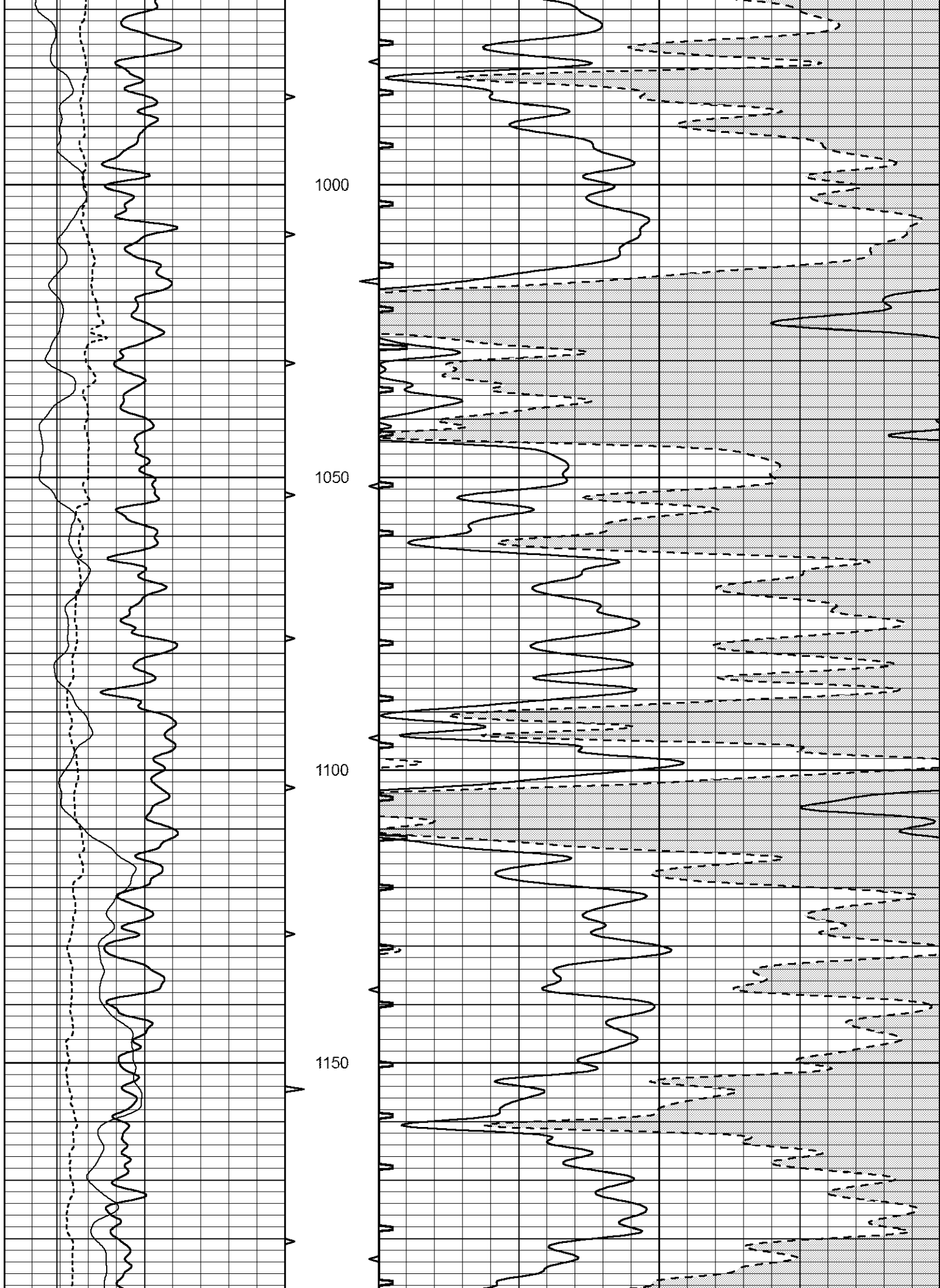
800

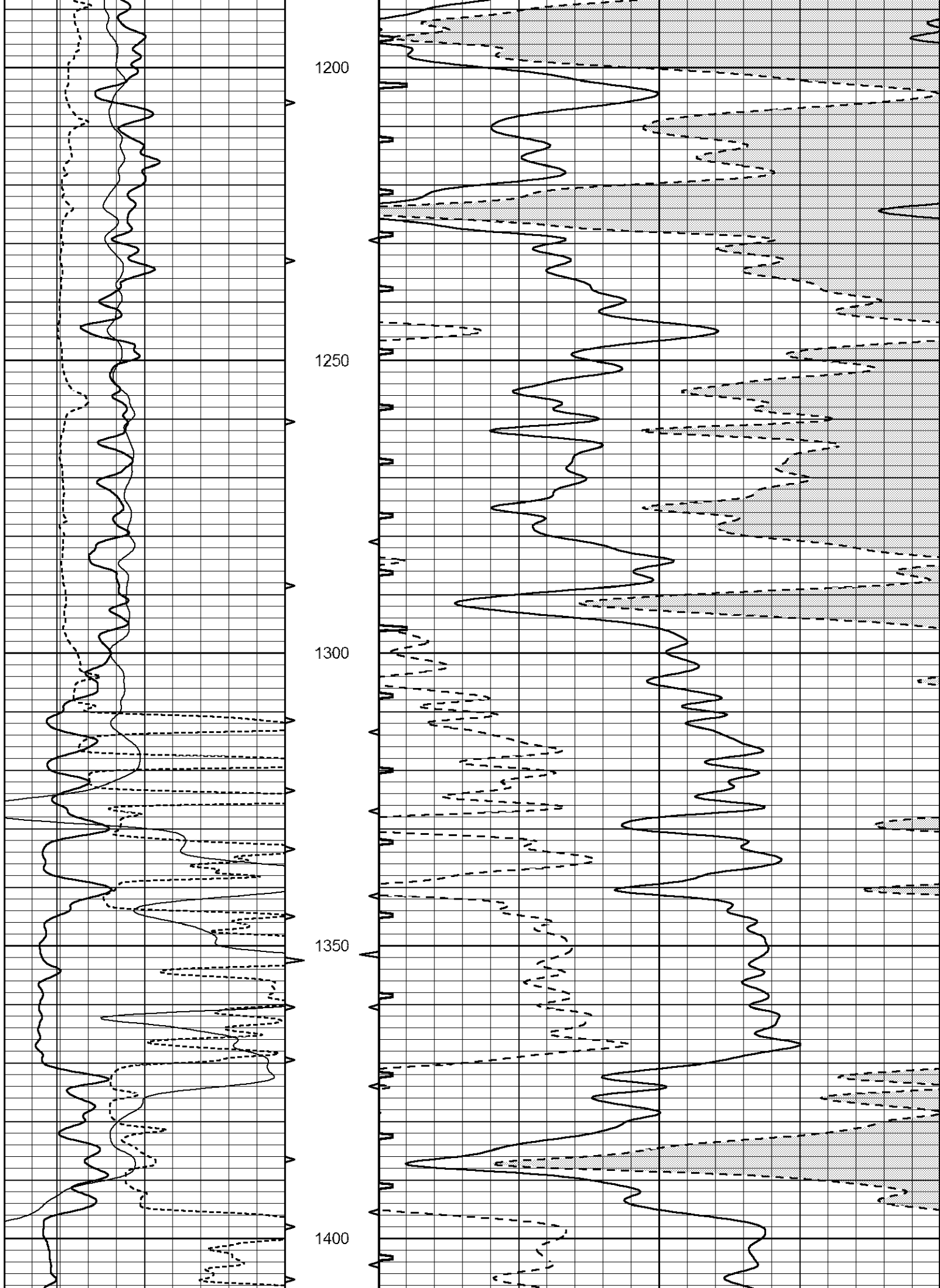
850

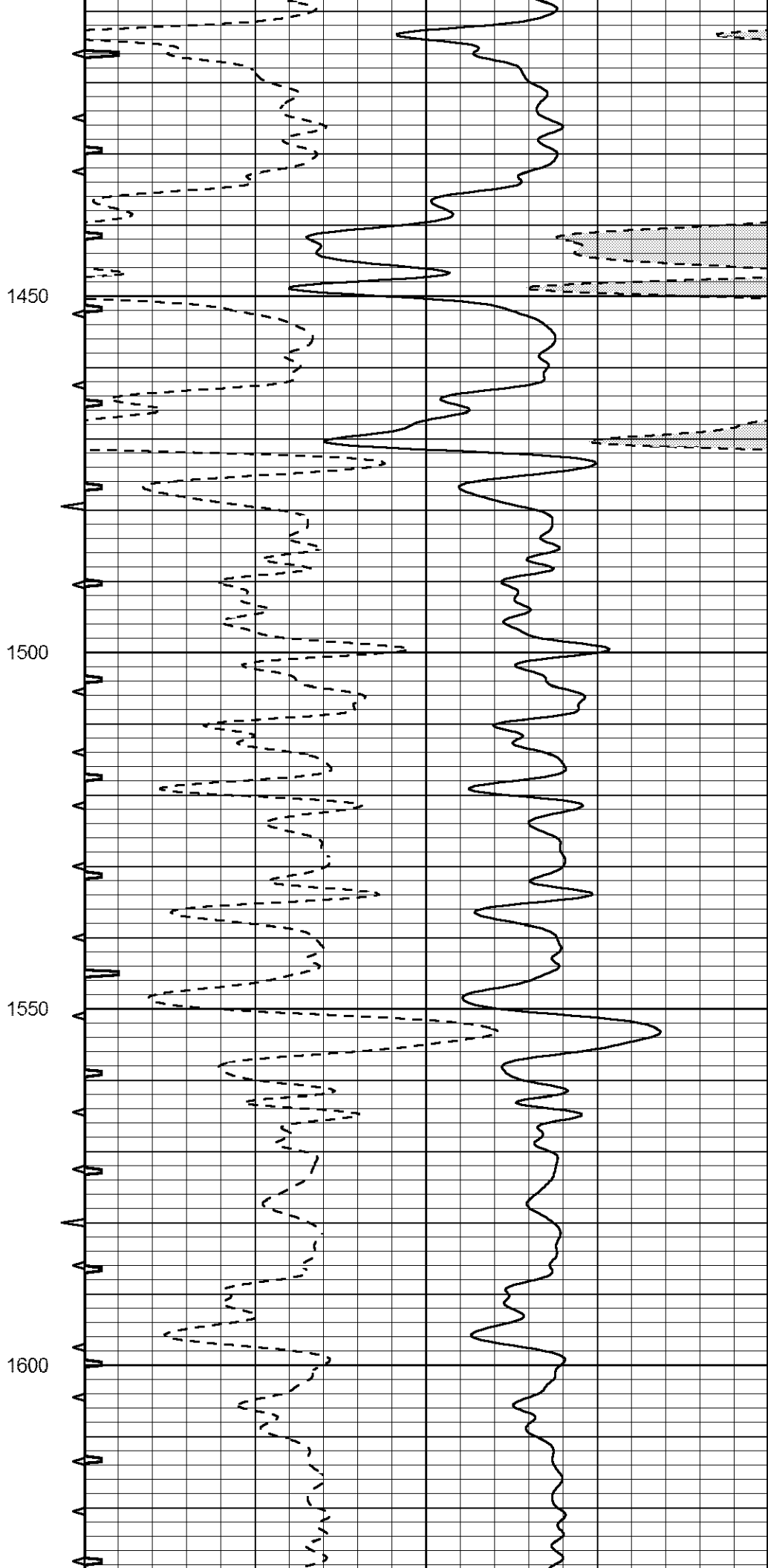
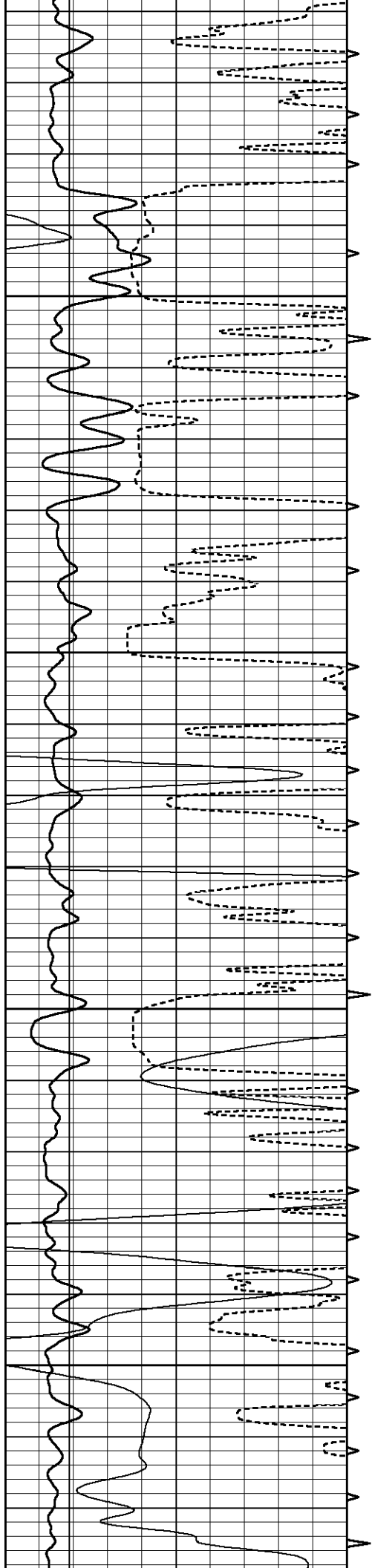
900

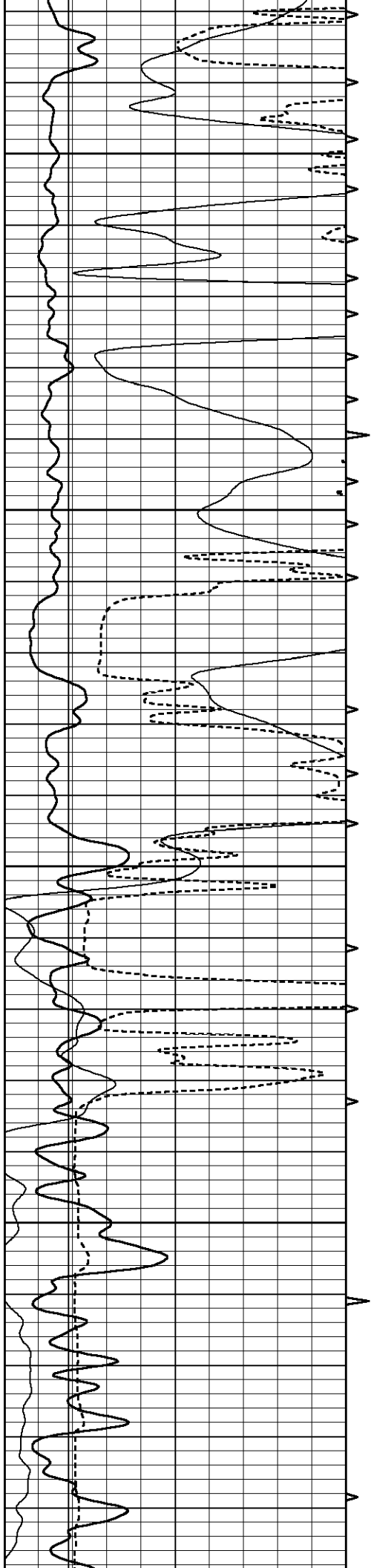
950









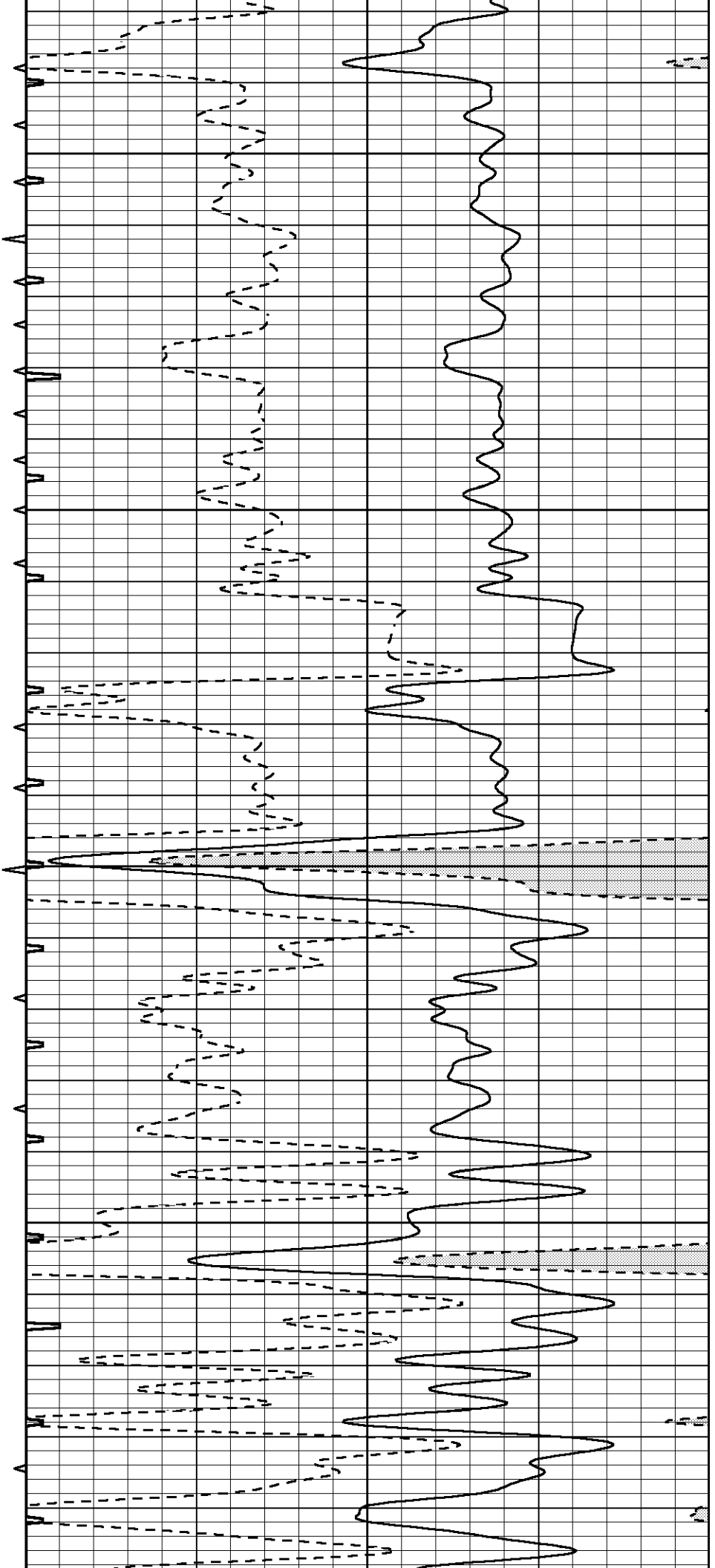


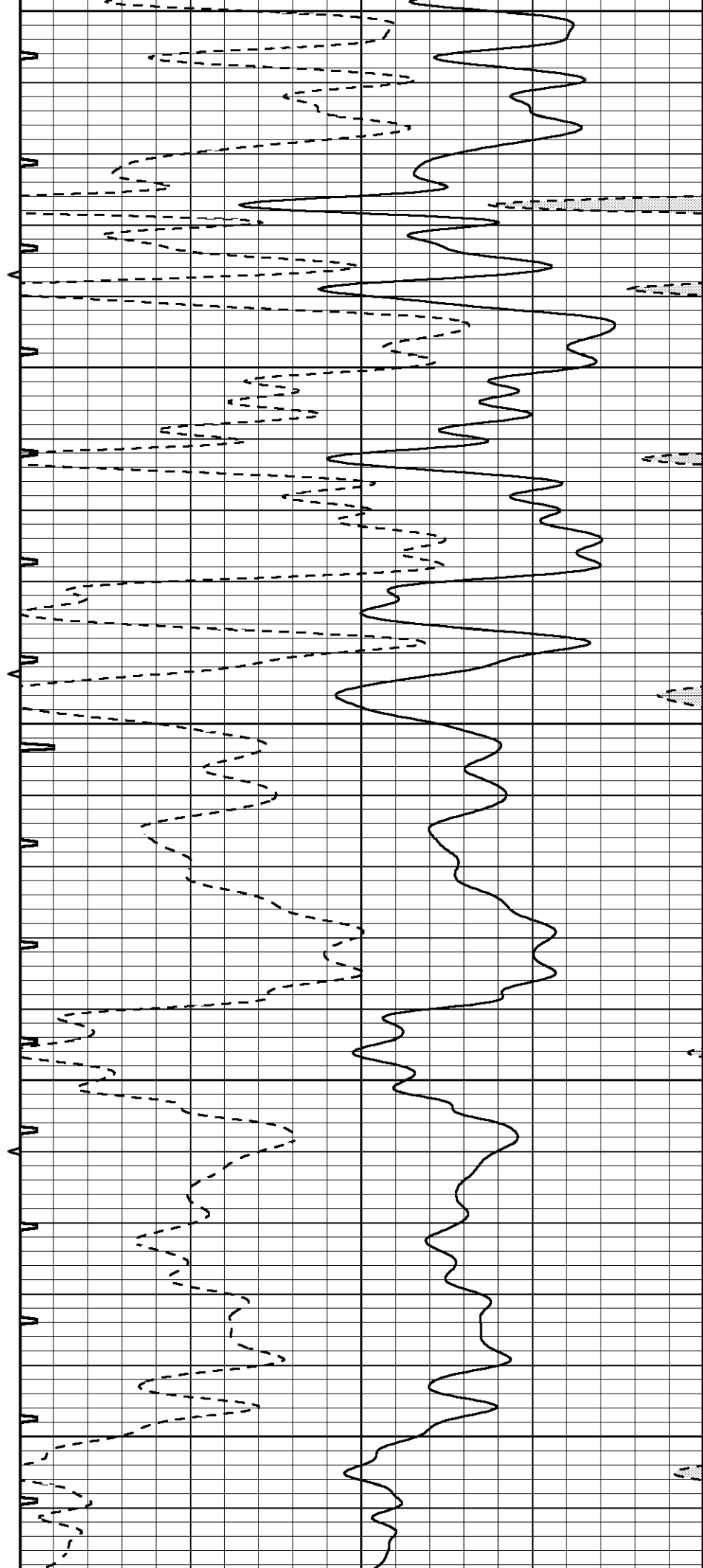
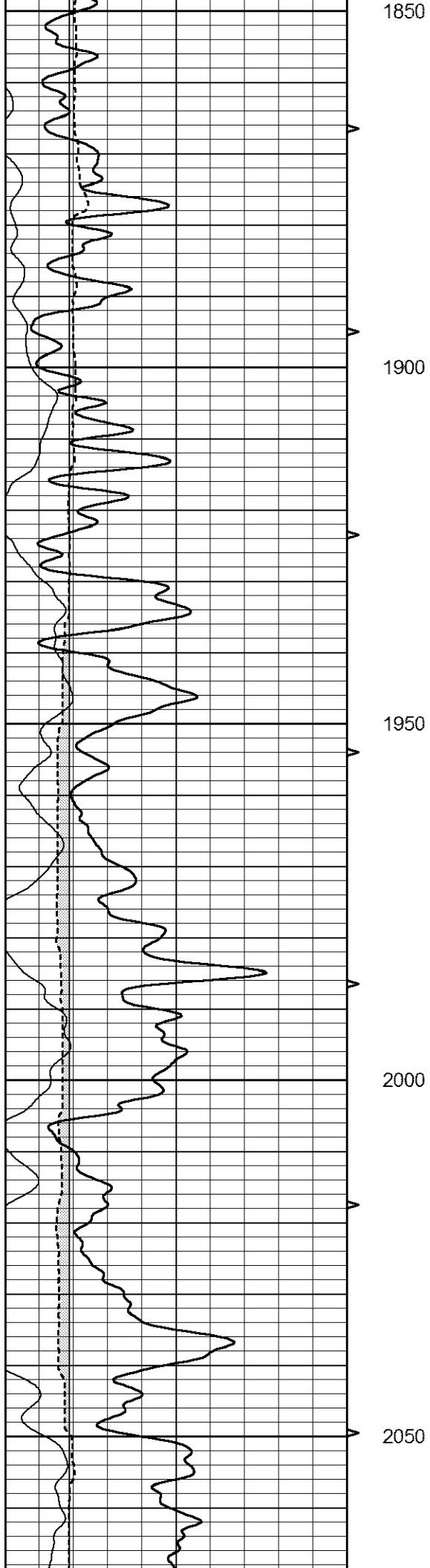
1650

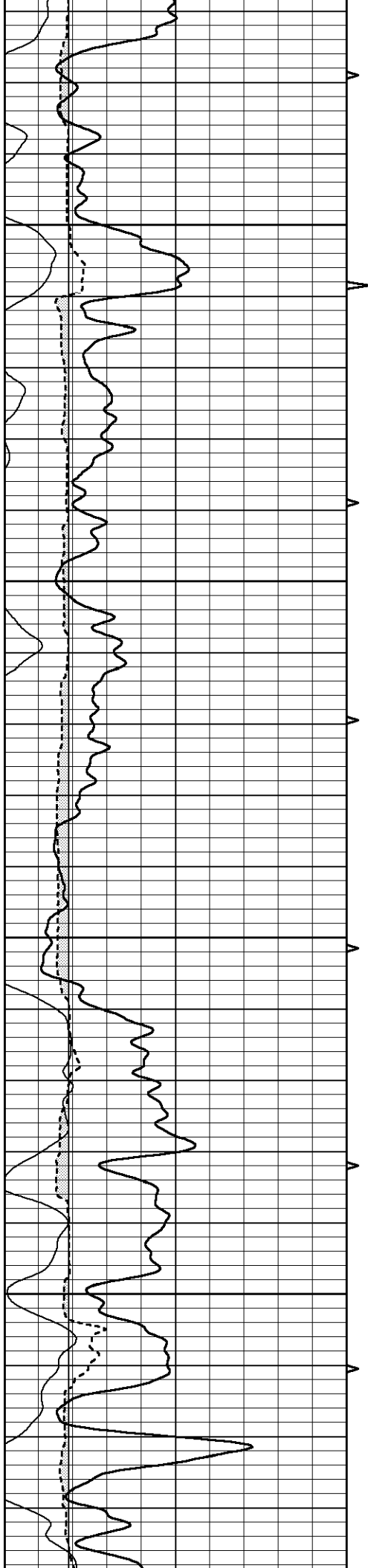
1700

1750

1800





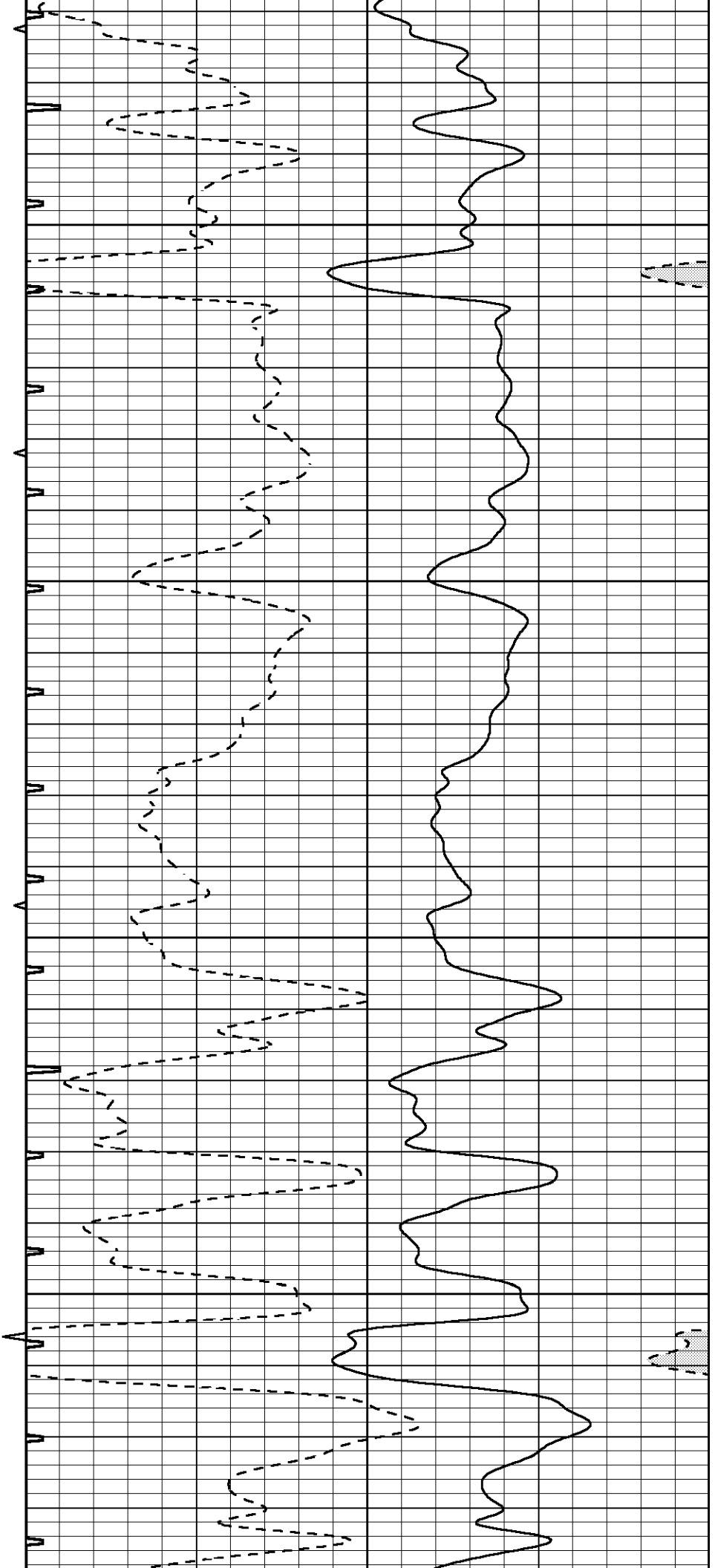


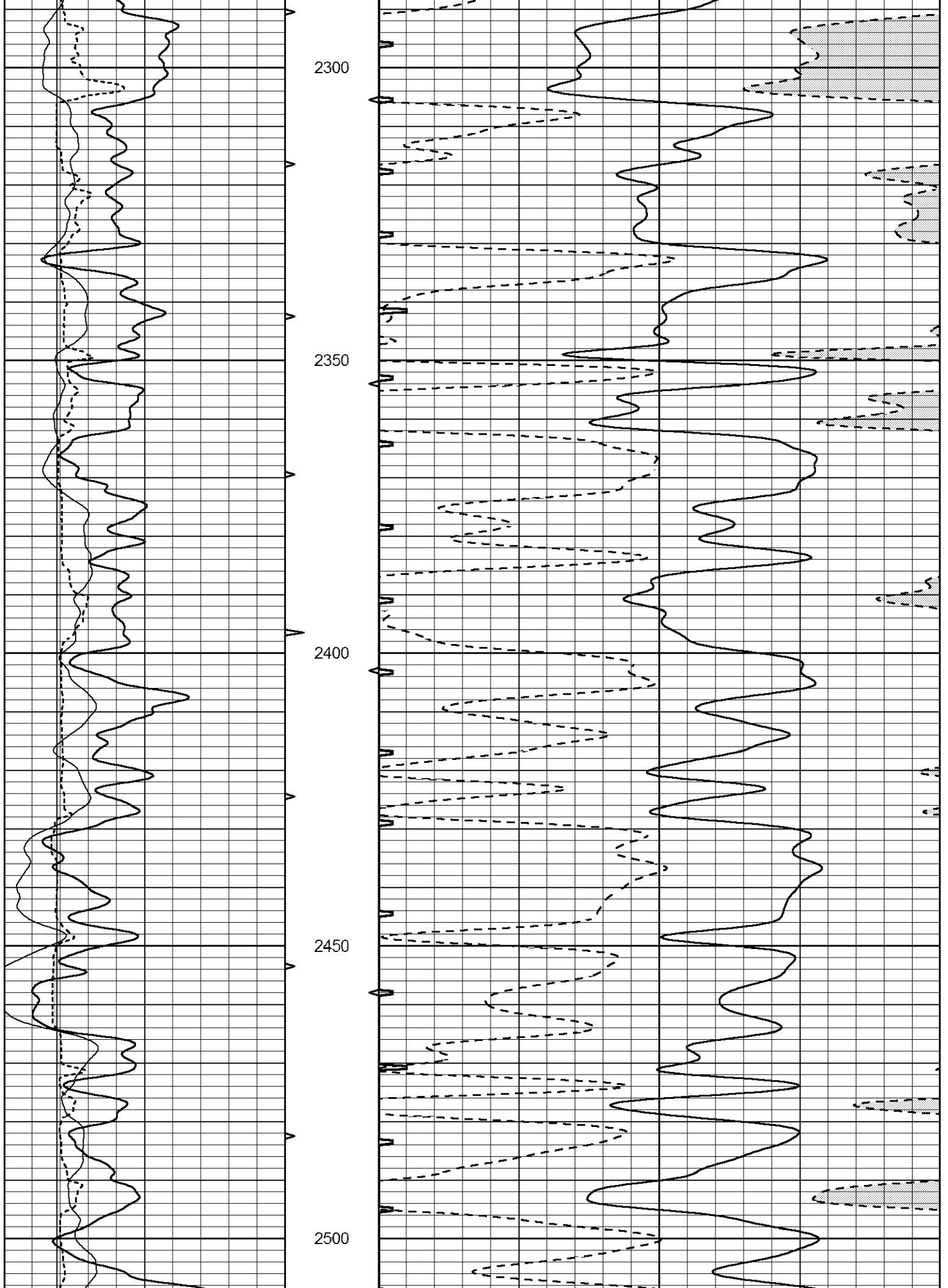
2100

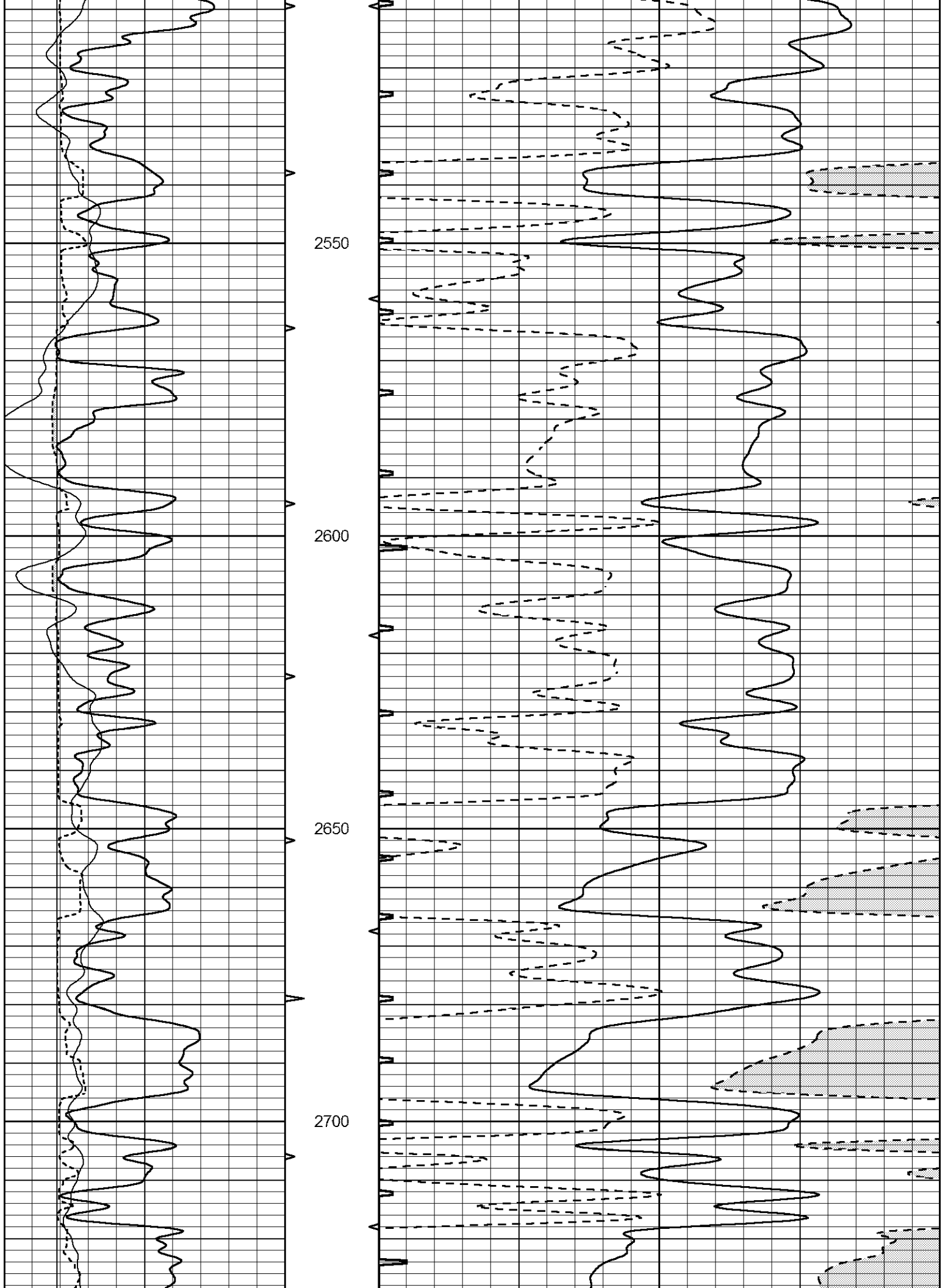
2150

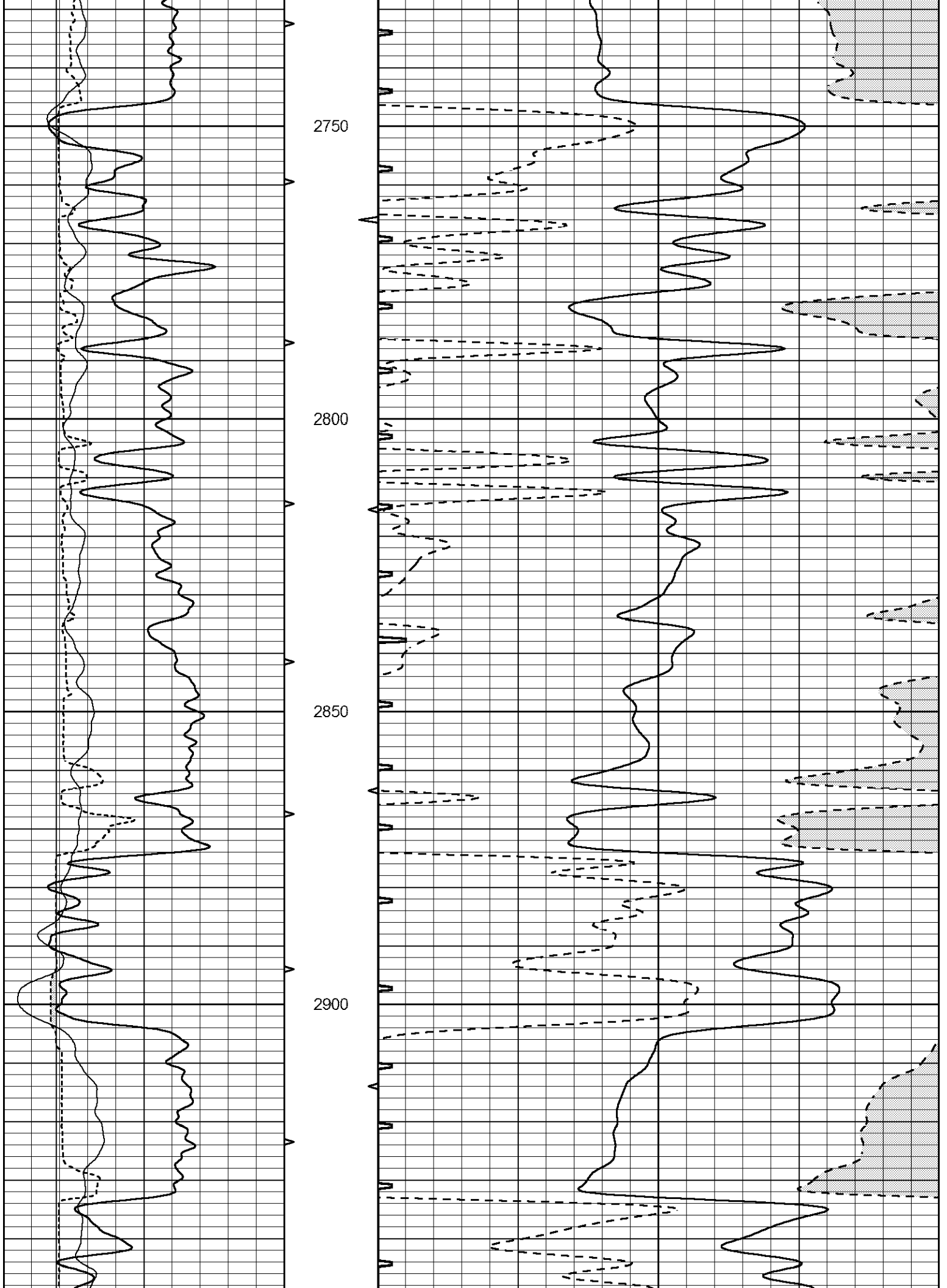
2200

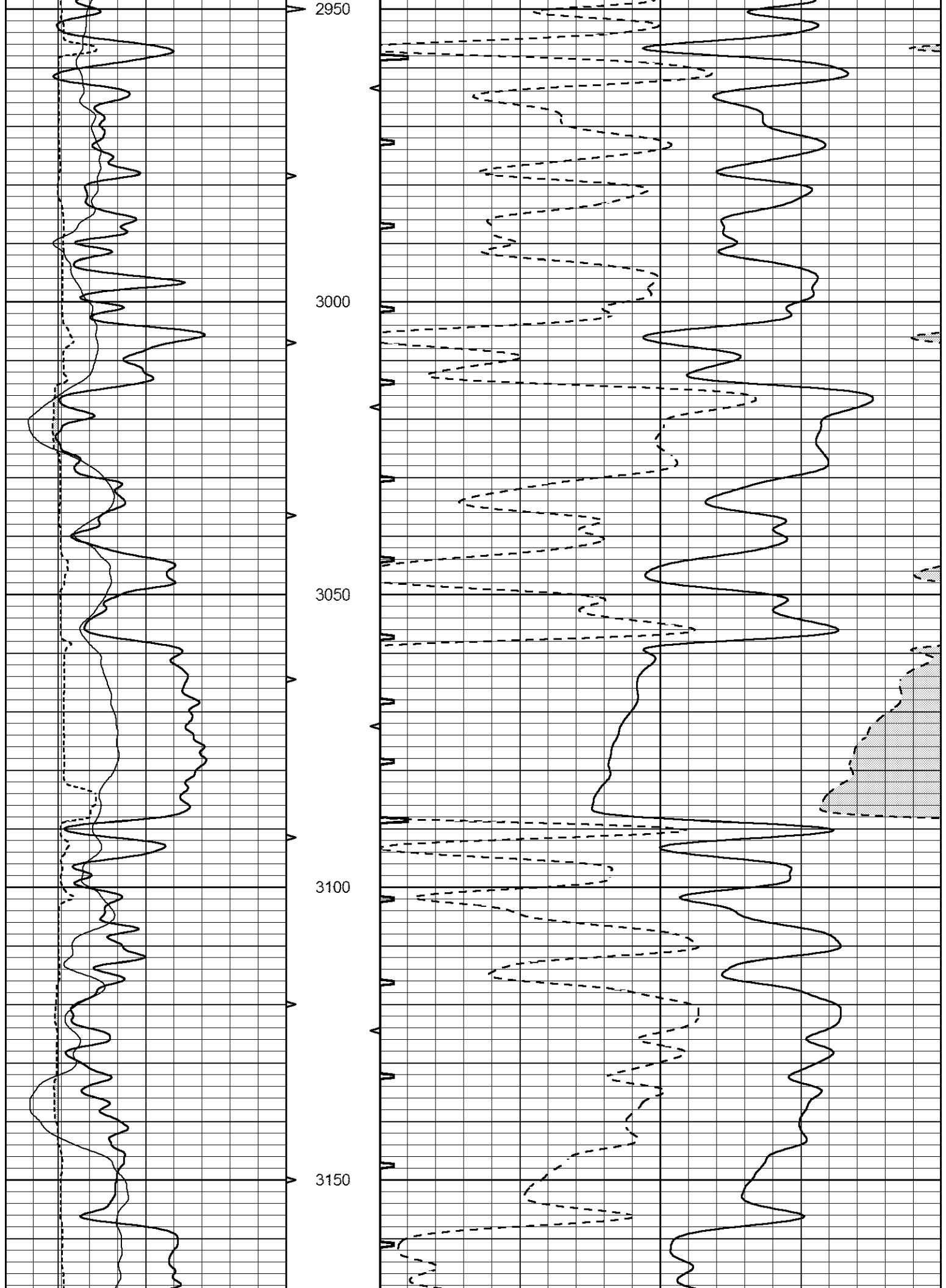
2250

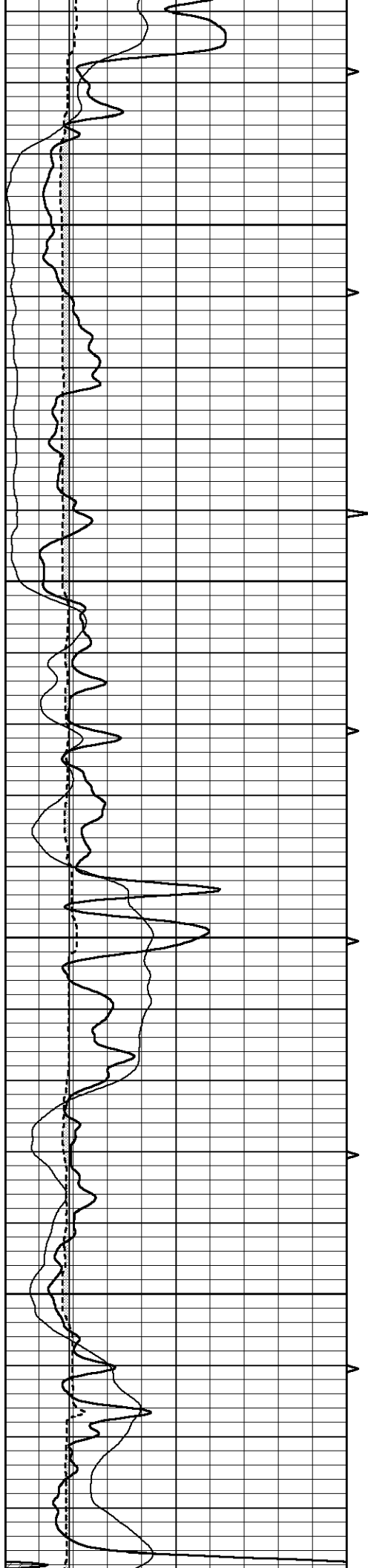










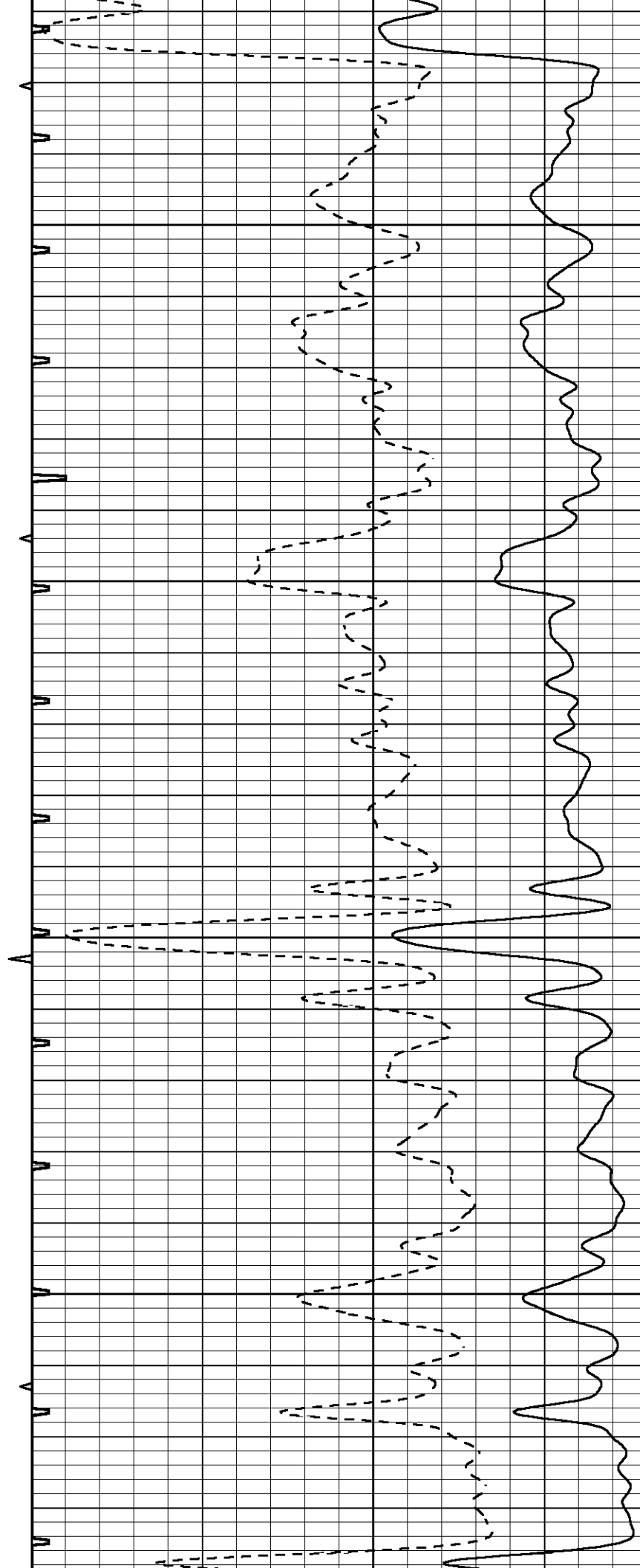


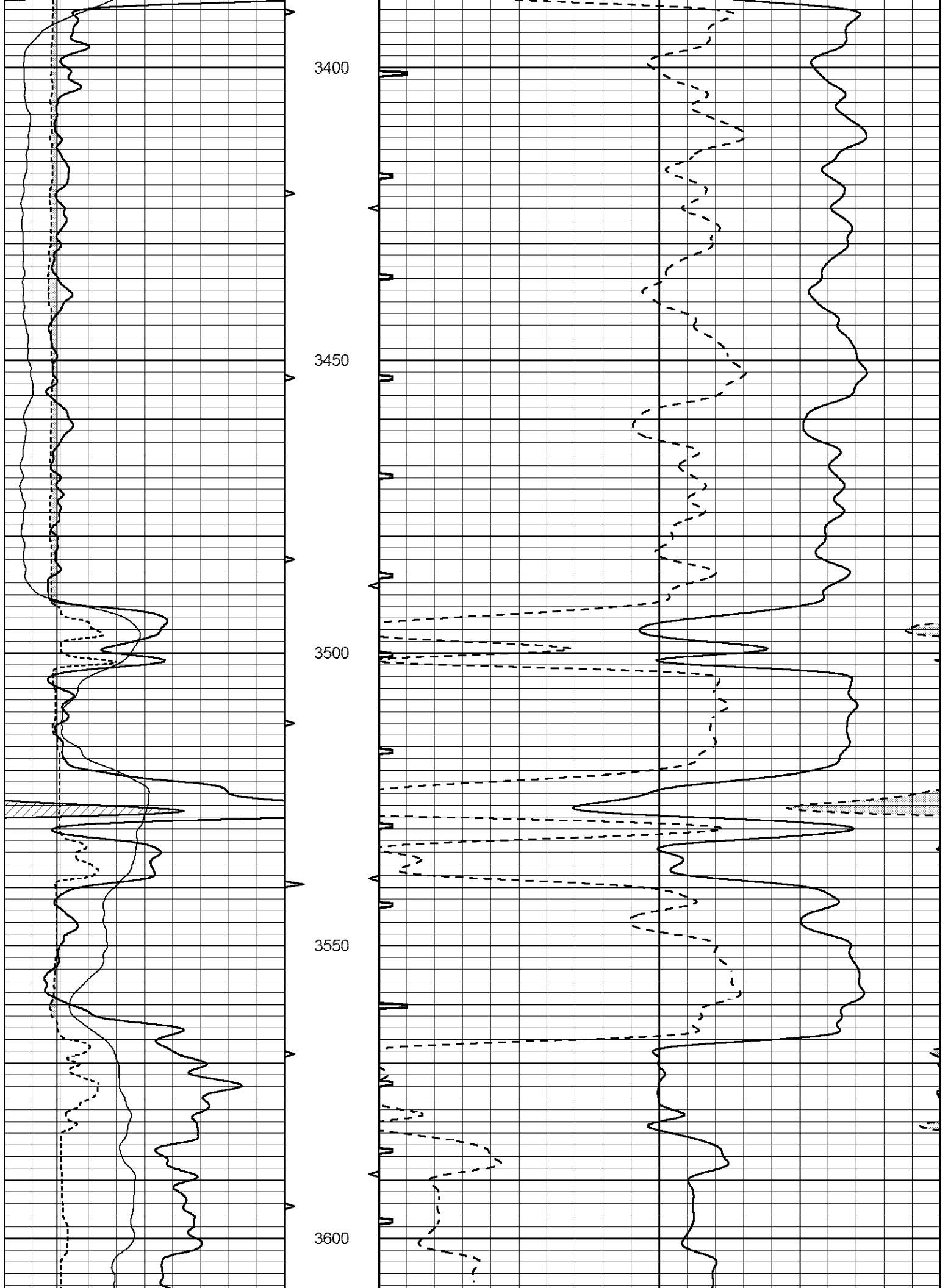
3200

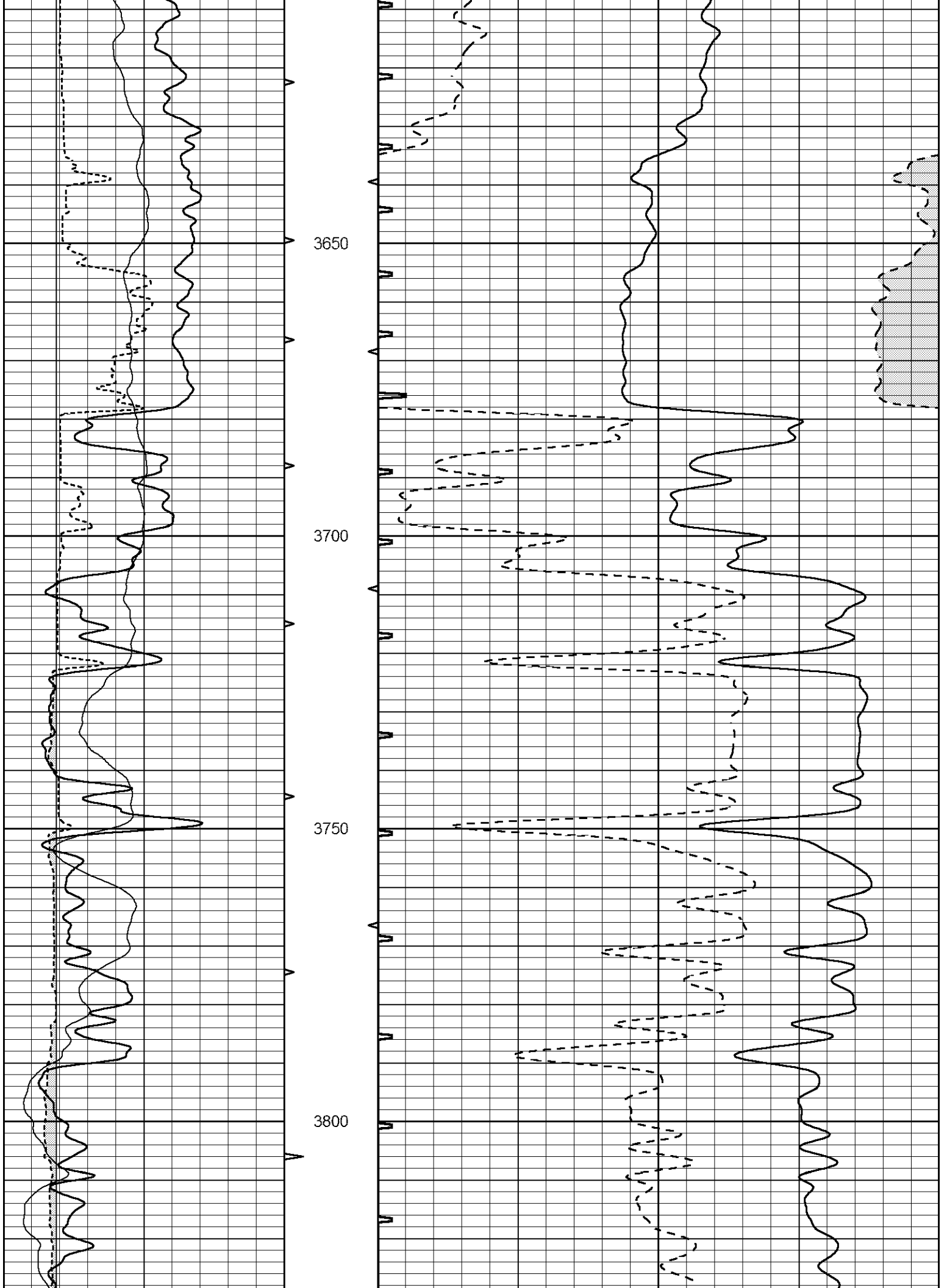
3250

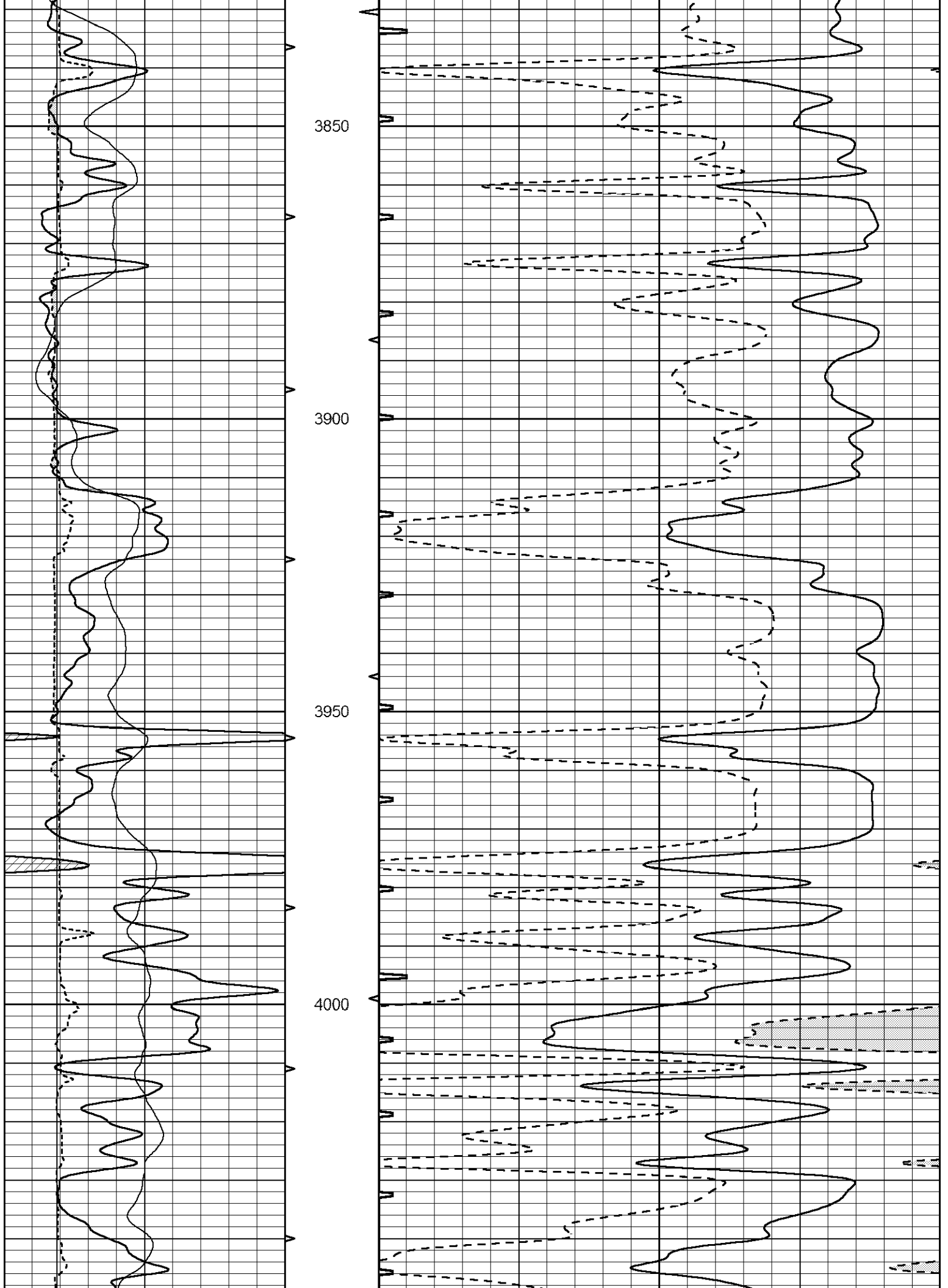
3300

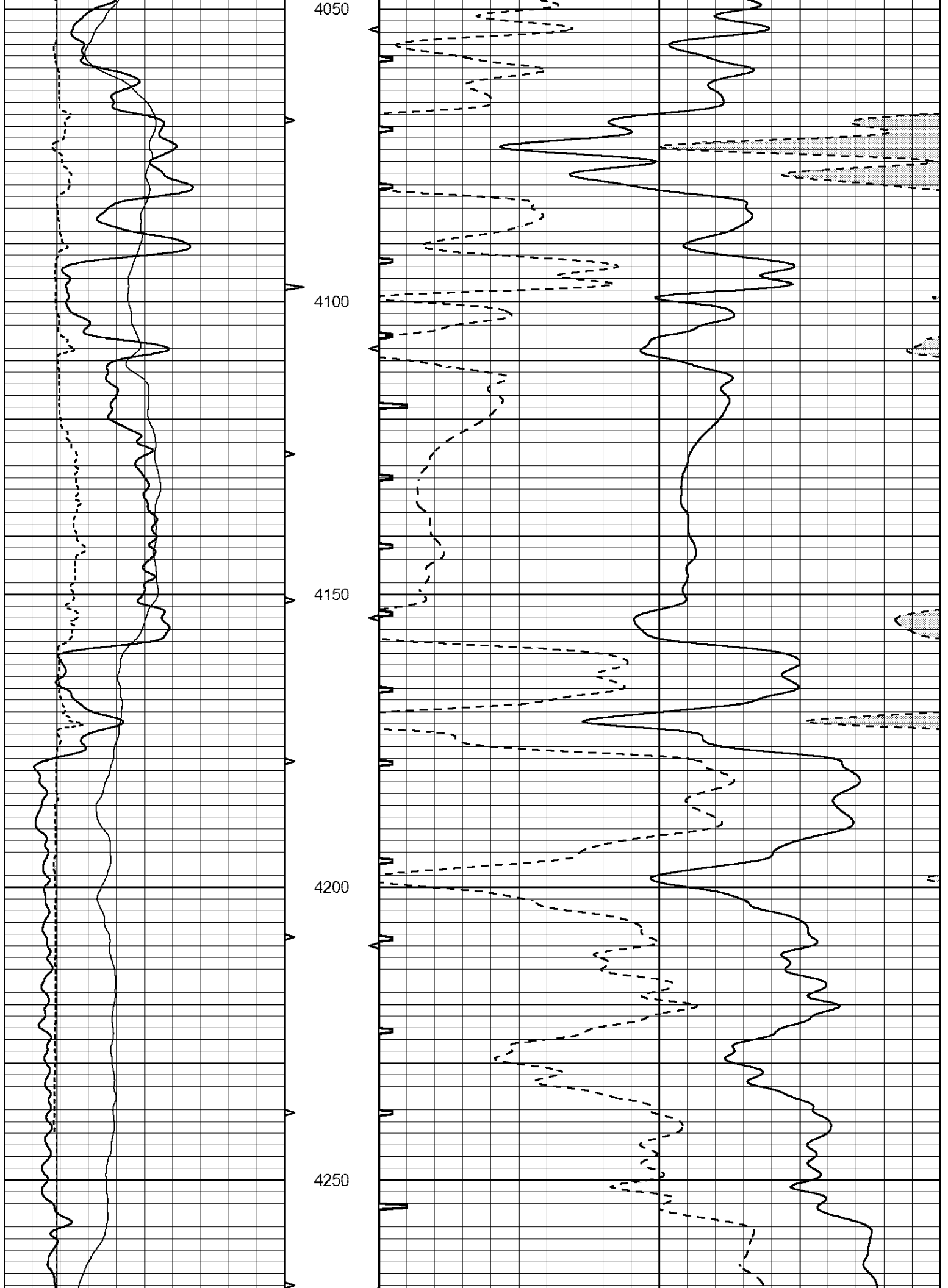
3350

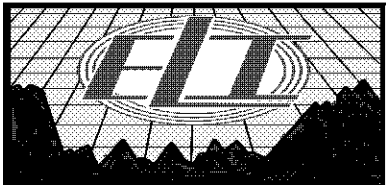
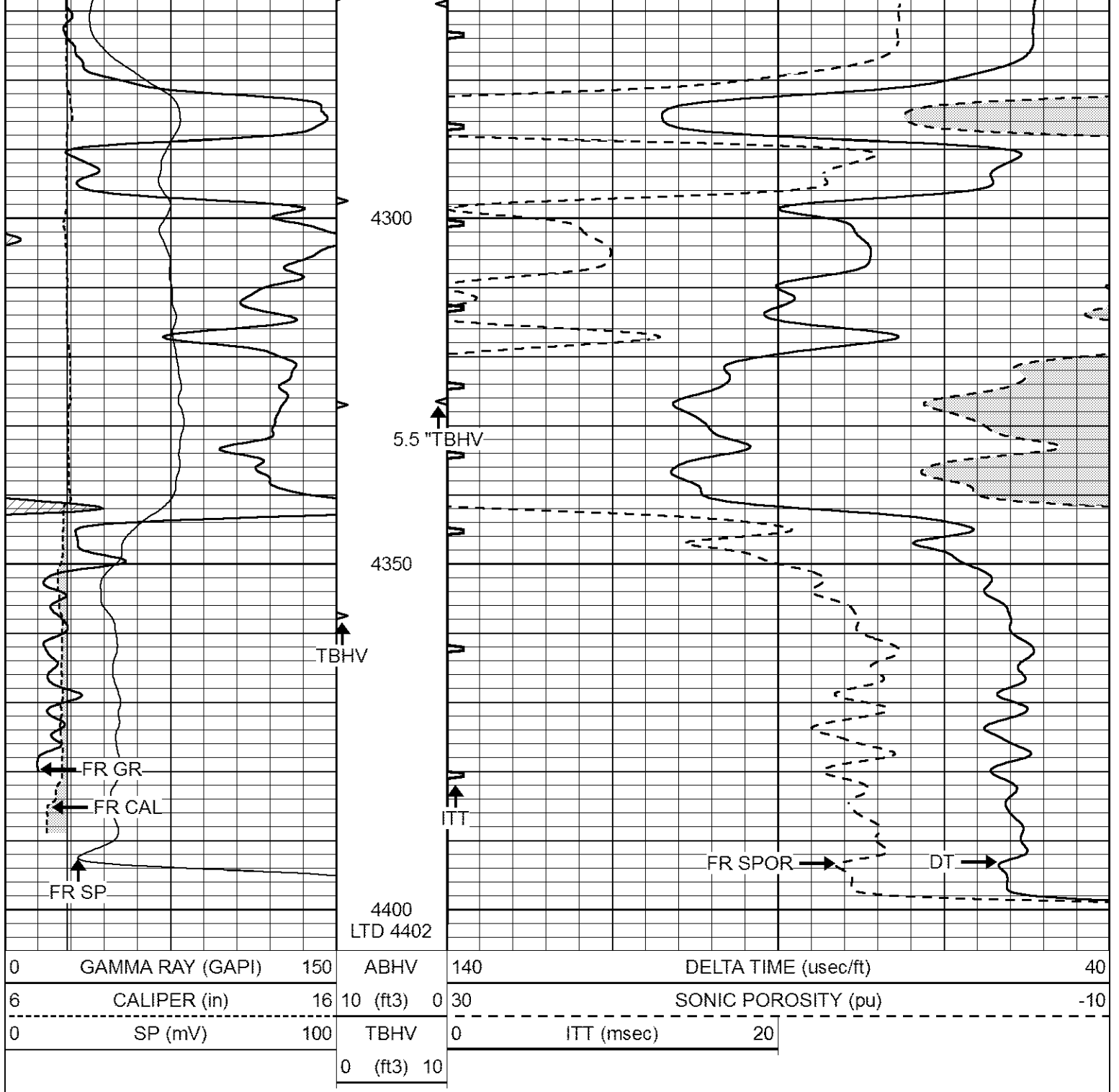








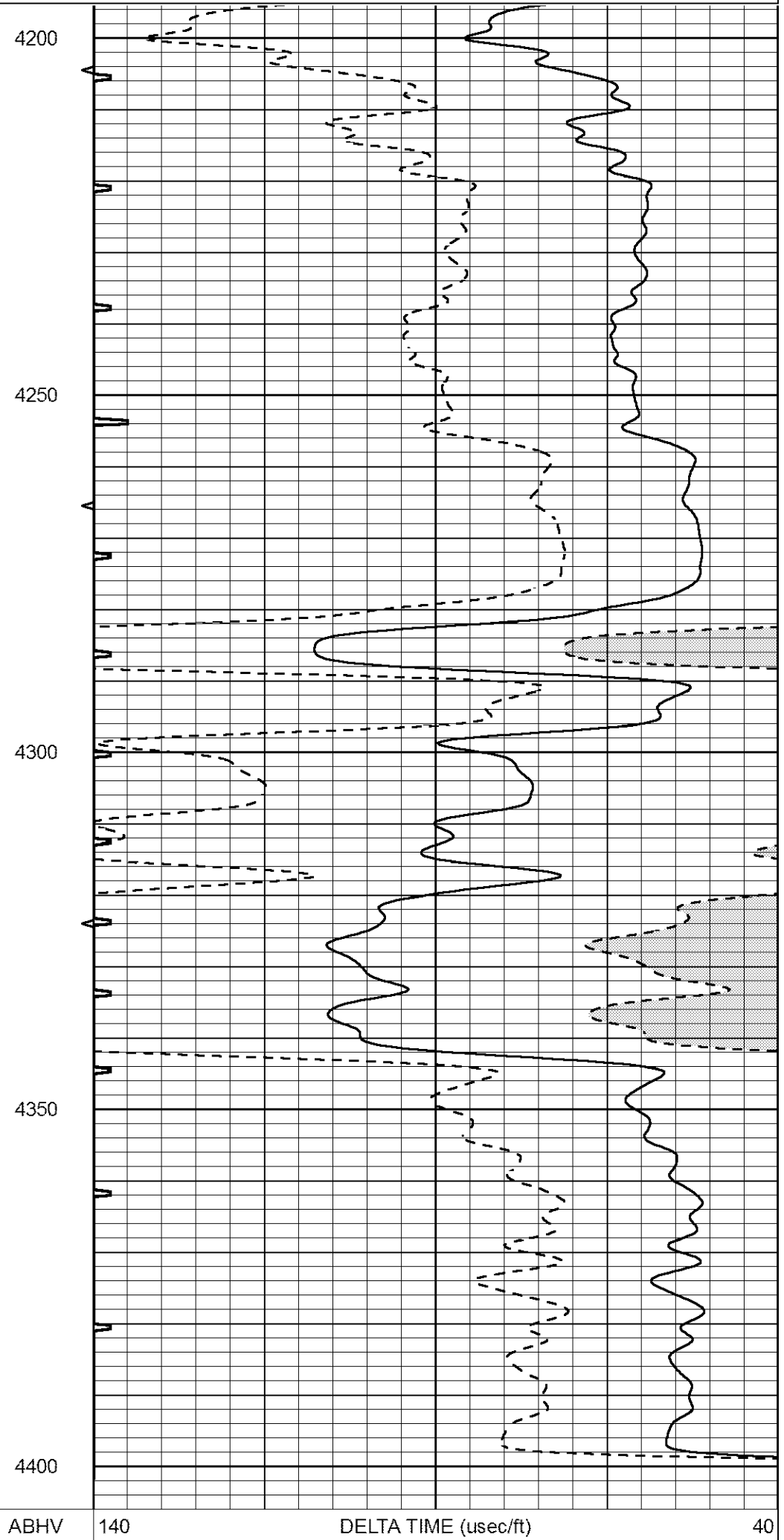
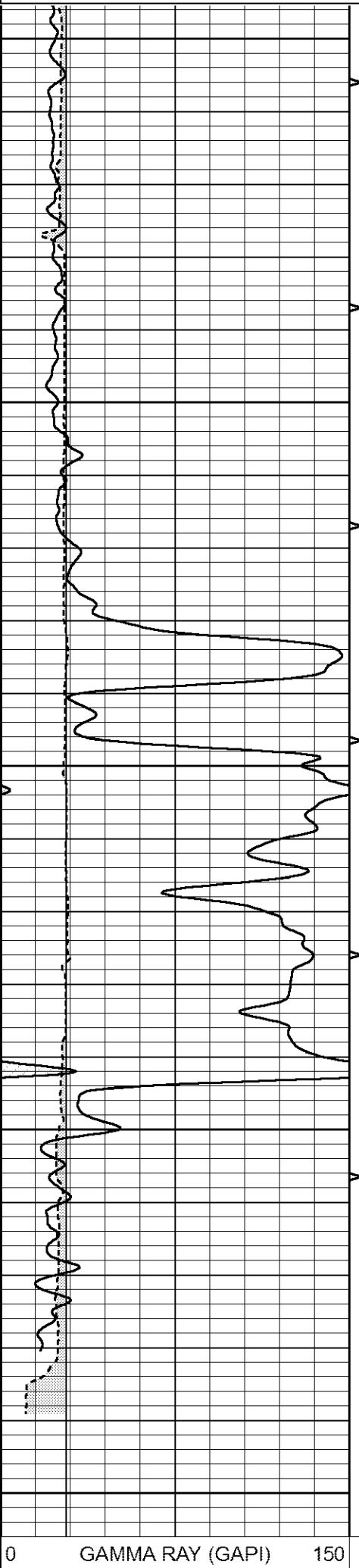




REPEAT SECTION

Database File 6751pe.db
 Dataset Pathname pass10.1R
 Presentation Format _slt
 Dataset Creation Fri Jul 01 17:22:51 2022
 Charted by Depth in Feet scaled 1:240

| | | | | | | |
|---|------------------|-----|----------|------|----------------------|-----|
| 0 | GAMMA RAY (GAPI) | 150 | ABHV | 140 | DELTA TIME (usec/ft) | 40 |
| 6 | CALIPER (in) | 16 | 10 (ft3) | 0 30 | SONIC POROSITY (pu) | -10 |
| | | | TBHV | 0 | ITT (msec) | 20 |
| | | | 0 (ft3) | 10 | | |



| | | | | | | | |
|---|--------------|----|----------|----|------------|---------------------|-----|
| 6 | CALIPER (in) | 16 | 10 (ft3) | 0 | 30 | SONIC POROSITY (pu) | -10 |
| | | | TBHV | 0 | ITT (msec) | 20 | |
| | | | 0 (ft3) | 10 | | | |