



MICRO LOG

Company EDISON OPERATING COMPANY, LLC.  
 Well SHORE TRUST #1-28  
 Field GOBIN  
 County STAFFORD State KANSAS

Location: API #: 15-185-24111-0000  
 2310' FSL & 330' FEL  
 NE - NE - SE  
 SEC 28 TWP 25S RGE 13W  
 Permanent Datum GROUND LEVEL Elevation 1932  
 Log Measured From KELLY BUSHING 10' A.G.L.  
 Drilling Measured From KELLY BUSHING  
 Other Services CDL/CNL/PE DIL/SON  
 Elevation K.B. 1942 D.F. 1940 G.L. 1932

Date	7/1/22
Run Number	TWO
Depth Driller	4400
Depth Logger	4402
Bottom Logged Interval	4386
Top Log Interval	3000
Casing Driller	8 5/8"@376'
Casing Logger	376
Bit Size	7 7/8
Type Fluid in Hole	CHEMICAL MUD
Density / Viscosity	9.5/56
pH / Fluid Loss	10.0/8.4
Source of Sample	FLOWLINE
Rm @ Meas. Temp	.700@80F
Rmt @ Meas. Temp	.525@80F
Rmc @ Meas. Temp	.840@80F
Source of Rmf / Rmc	MEASUREMENT
Rm @ BHT	.467@120F
Time Circulation Stopped	4.5 HOURS
Time Logger on Bottom	4:30 P.M.
Maximum Recorded Temperature	120F
Equipment Number	3802
Location	HAYS, KANSAS
Recorded By	COLE ROBBEN
Witnessed By	DEREK PATTERSON

<<< Fold Here >>>

All interpretations are opinions based on inferences from electrical or other measurements and we cannot and do not guarantee the accuracy or correctness of any interpretation, and we shall not, except in the case of gross or willful negligence on our part, be liable or responsible for any loss, costs, damages, or expenses incurred or sustained by anyone resulting from any interpretation made by any of our officers, agents or employees. These interpretations are also subject to our general terms and conditions set out in our current Price Schedule.

Comments

THANK YOU FOR USING ELI WIRELINE SERVICES, HAYS, KS. ( 785 ) 628-6395  
 DIRECTIONS

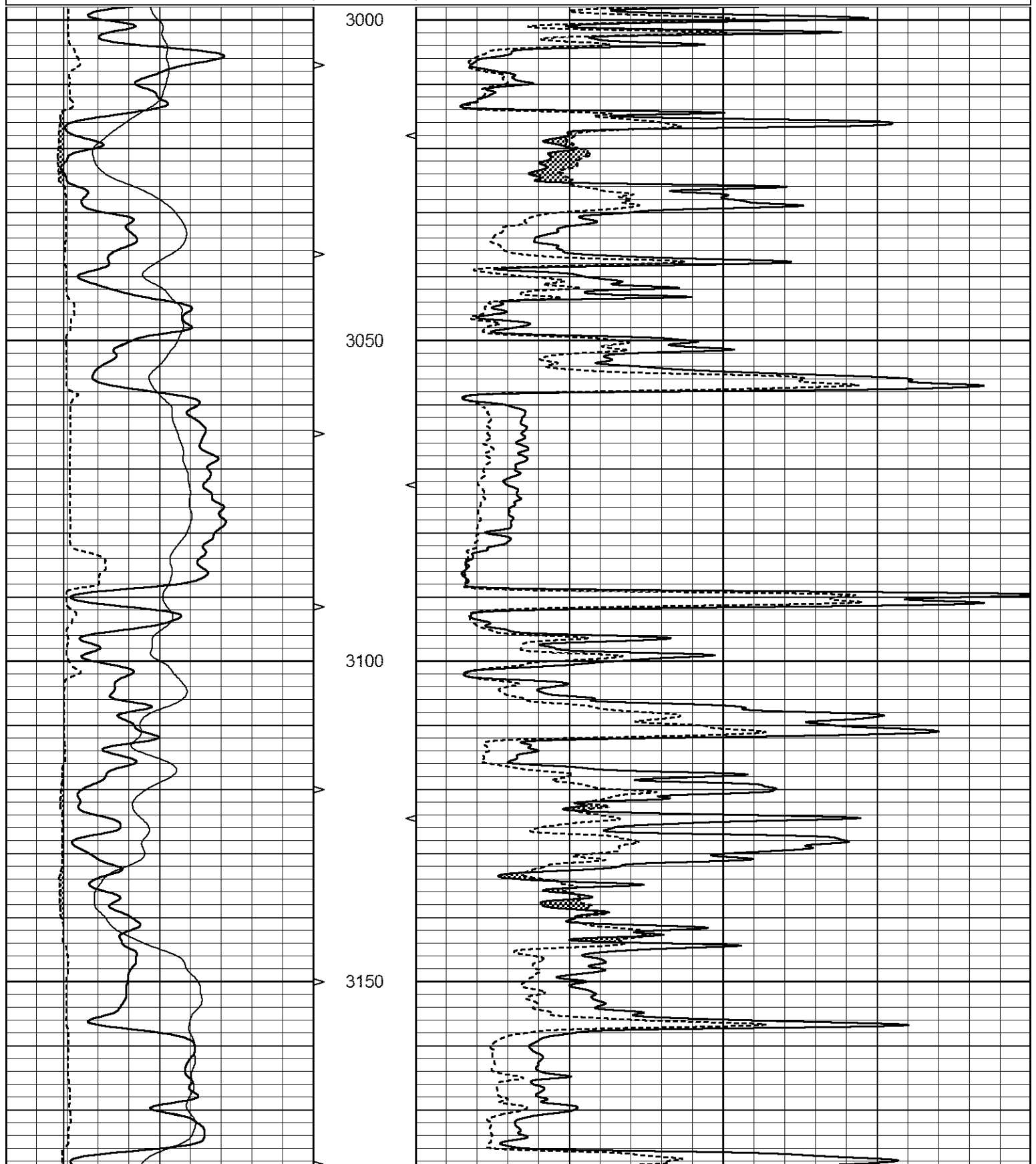
GREAT BEND, KANSAS SOUTH TO HIGHWAY 281 & HIGHWAY 50 ROUNDABOUT,  
 7.5 MILES SOUTH ON HIGHWAY 281, WEST INTO

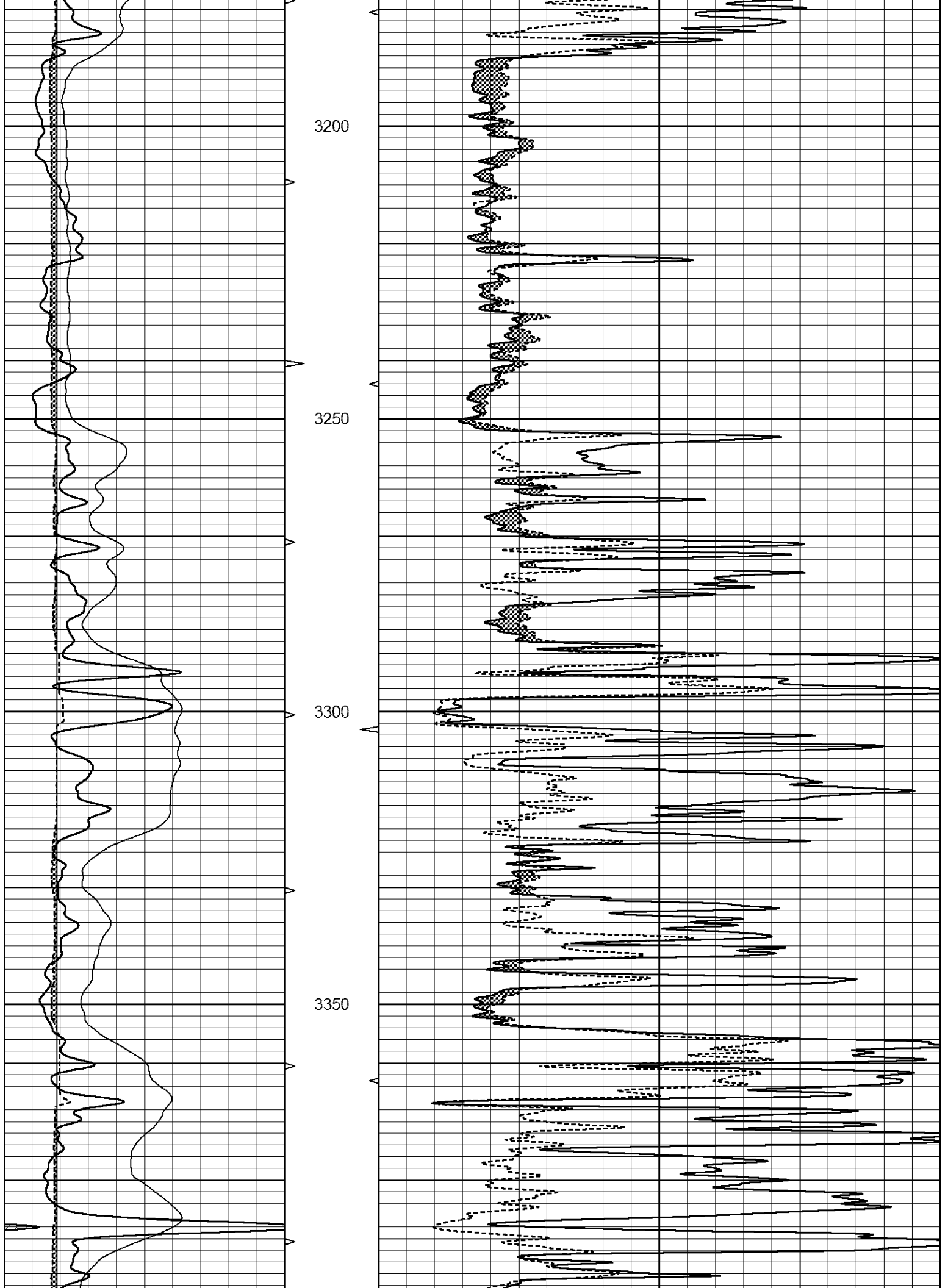


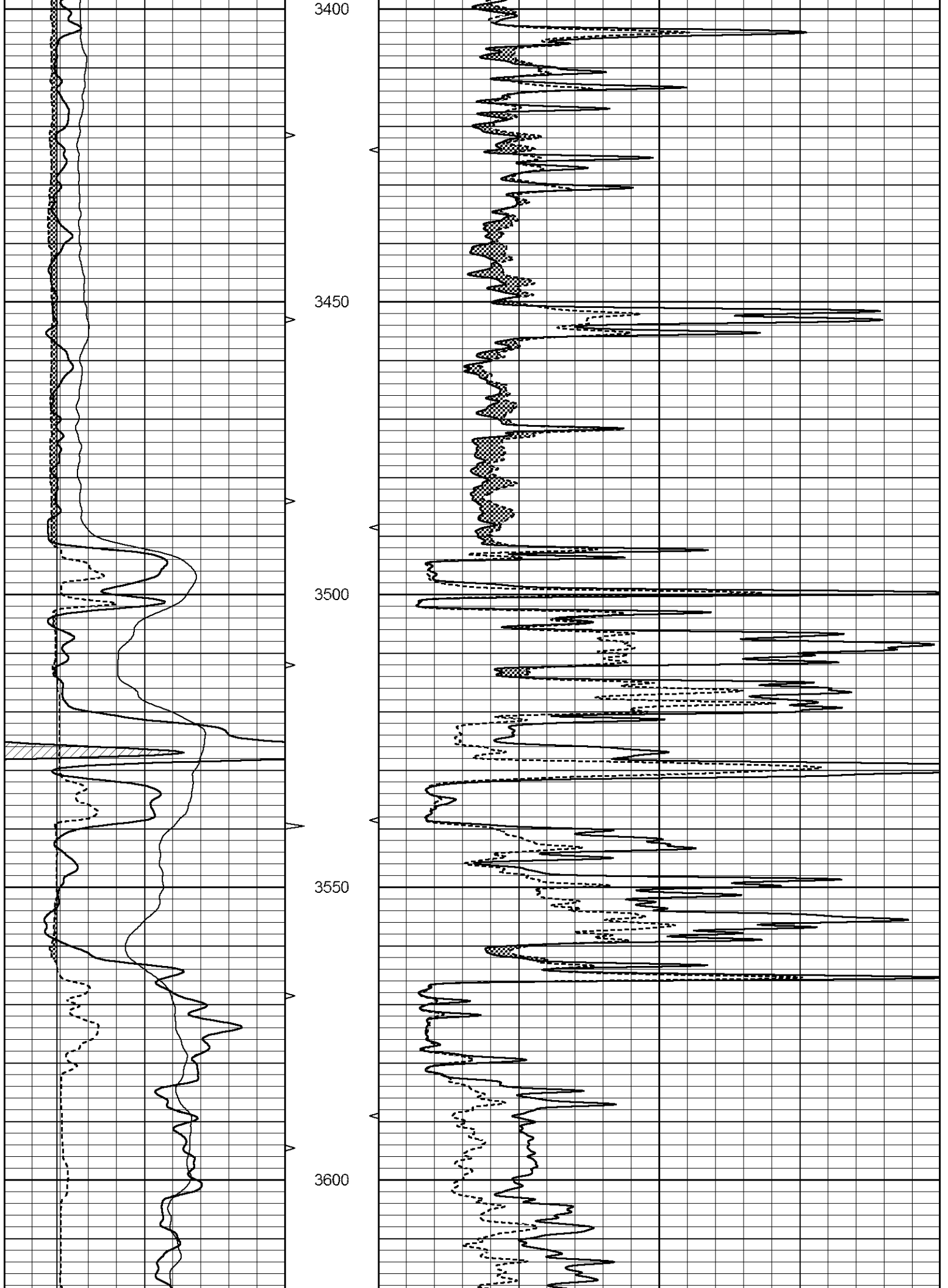
MAIN SECTION

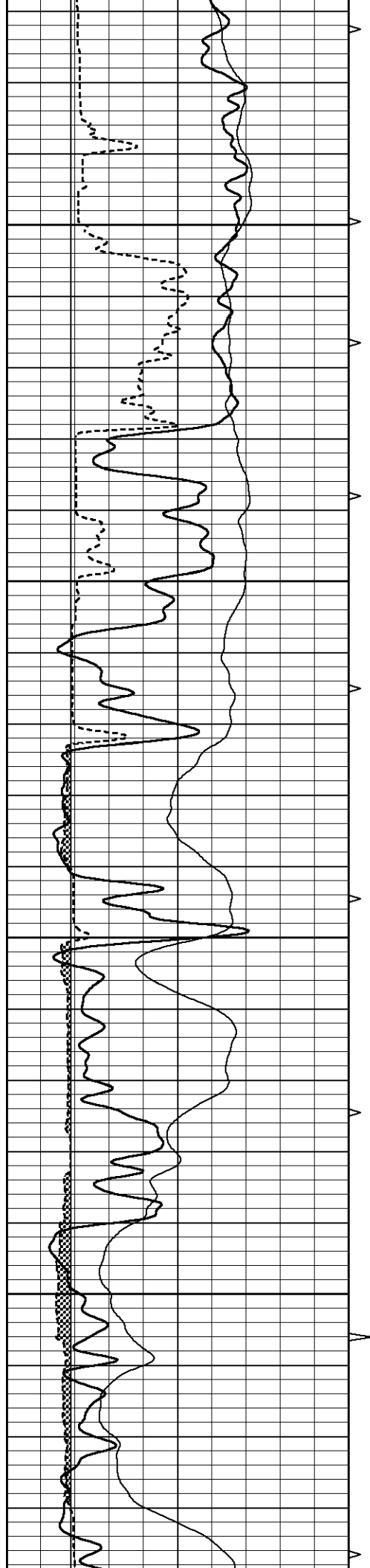
Database File 6751pe.db  
 Dataset Pathname pass11.1IDK  
 Presentation Format \_micro  
 Dataset Creation Fri Jul 01 18:02:32 2022  
 Charted by Depth in Feet scaled 1:240

0	GAMMA RAY (GAPI)	150	ABHV	0	MEL1.5 (Ohm-m)	40
6	CALIPER (in)	16	10 (ft3)	0	MEL2.0 (Ohm-m)	40
0	SP (mV)	100	TBHV			
			0 (ft3)	10		







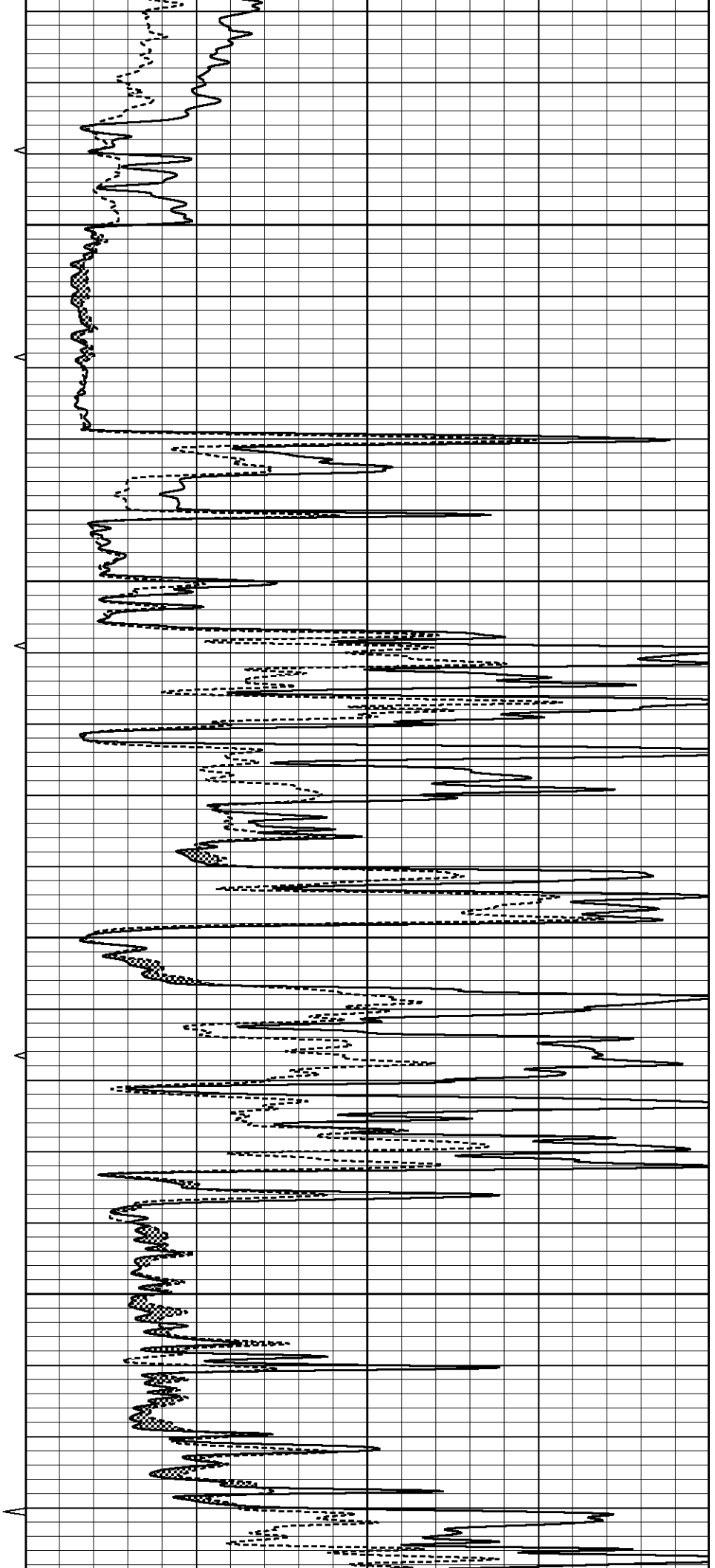


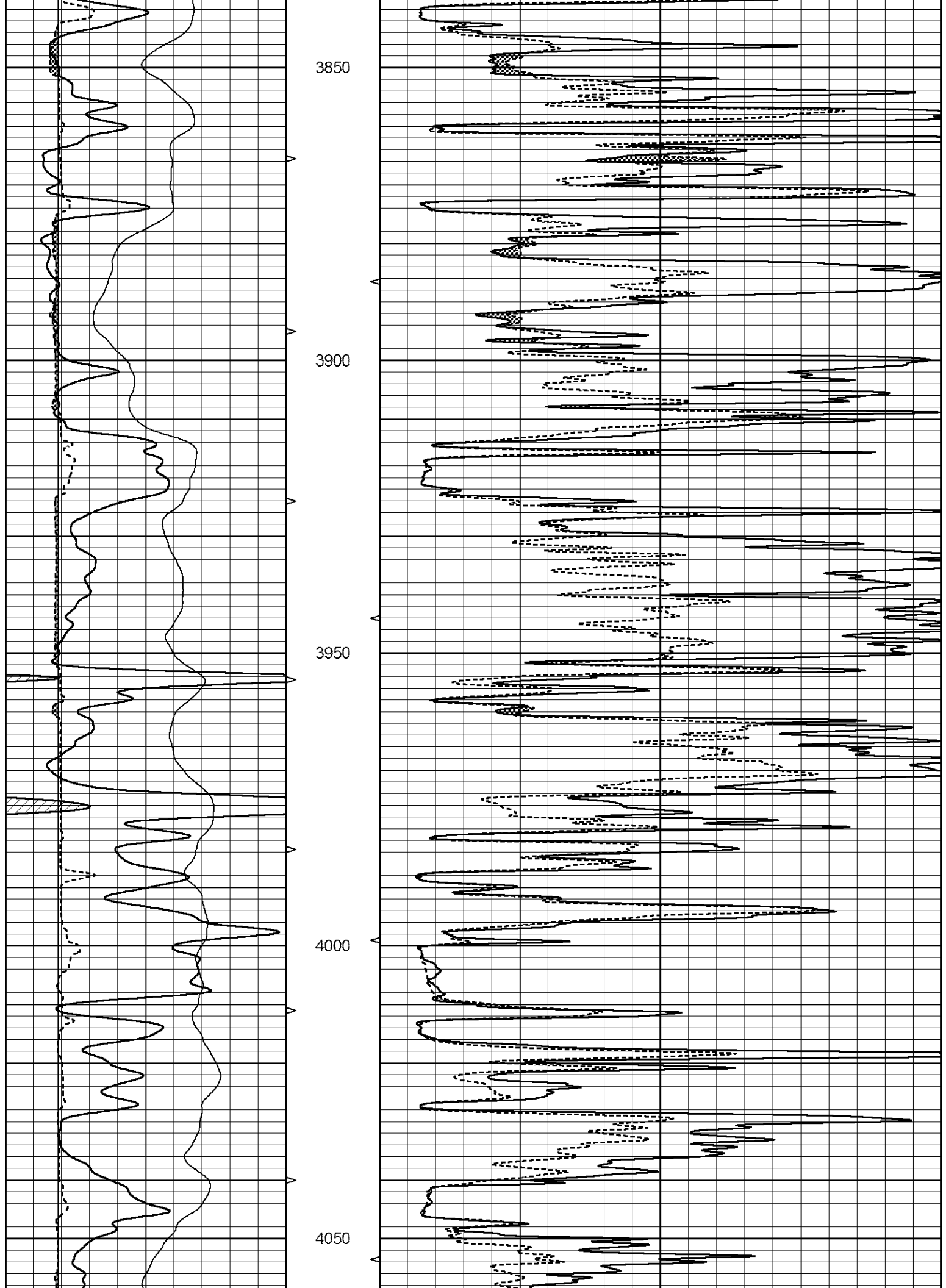
3650

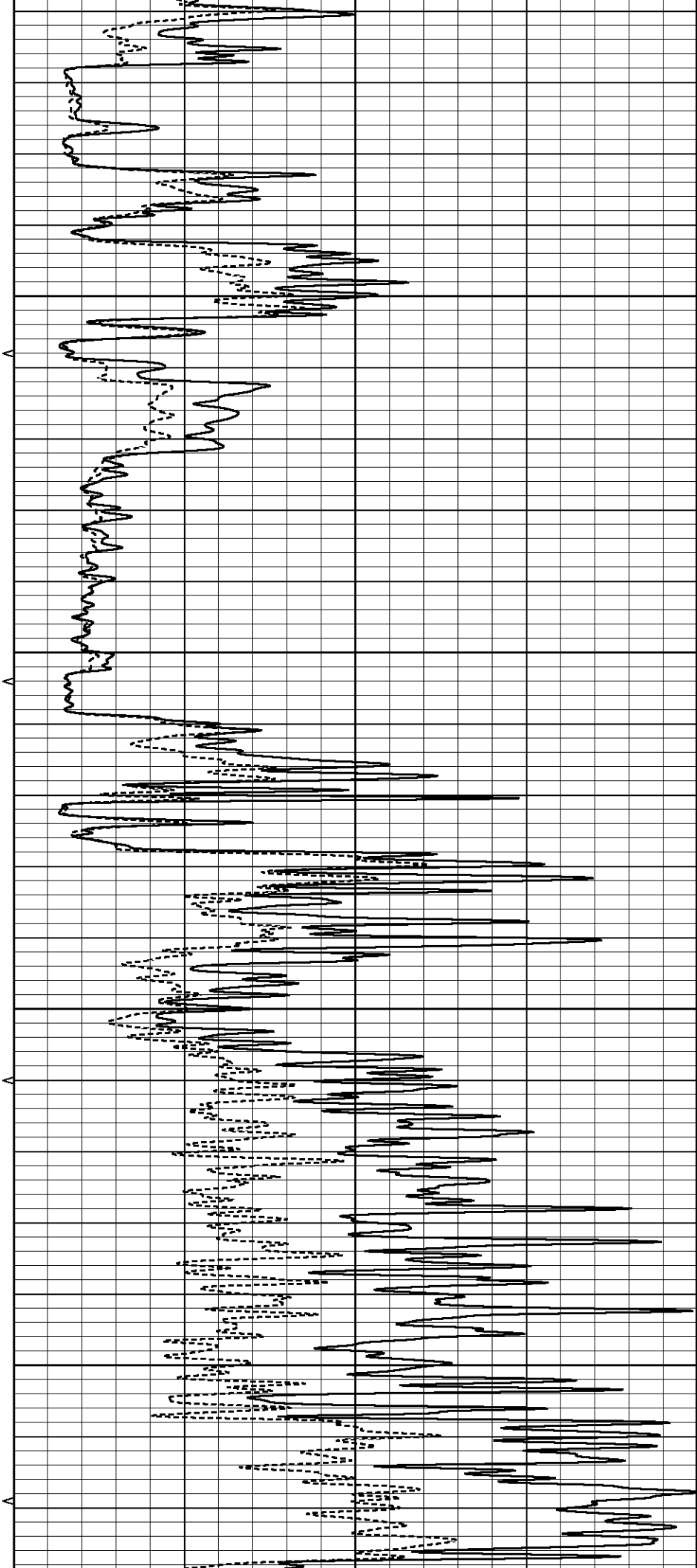
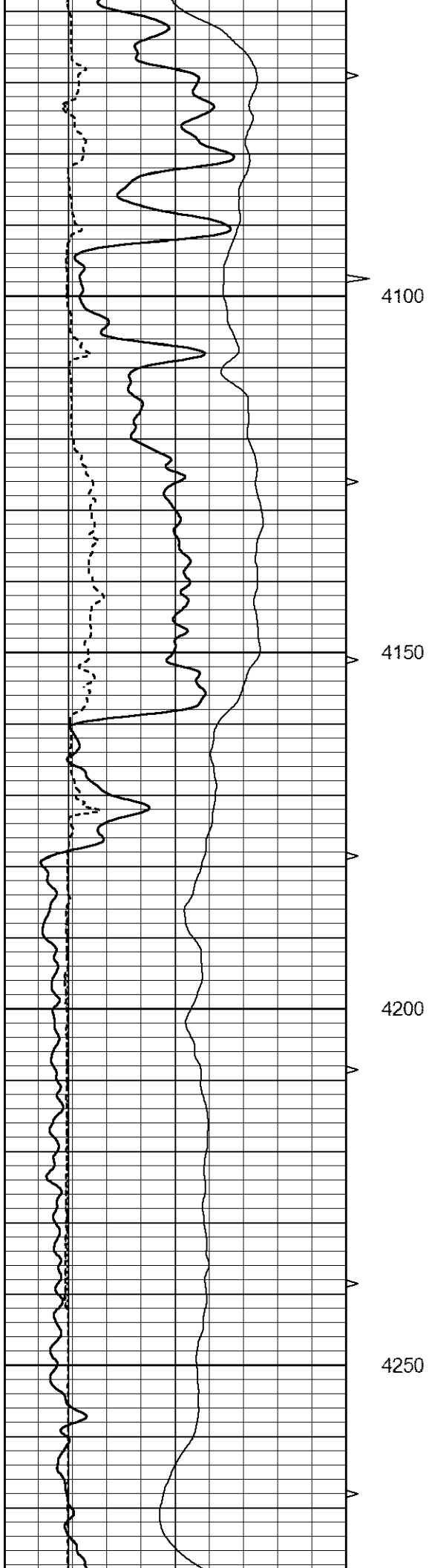
3700

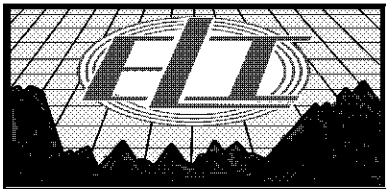
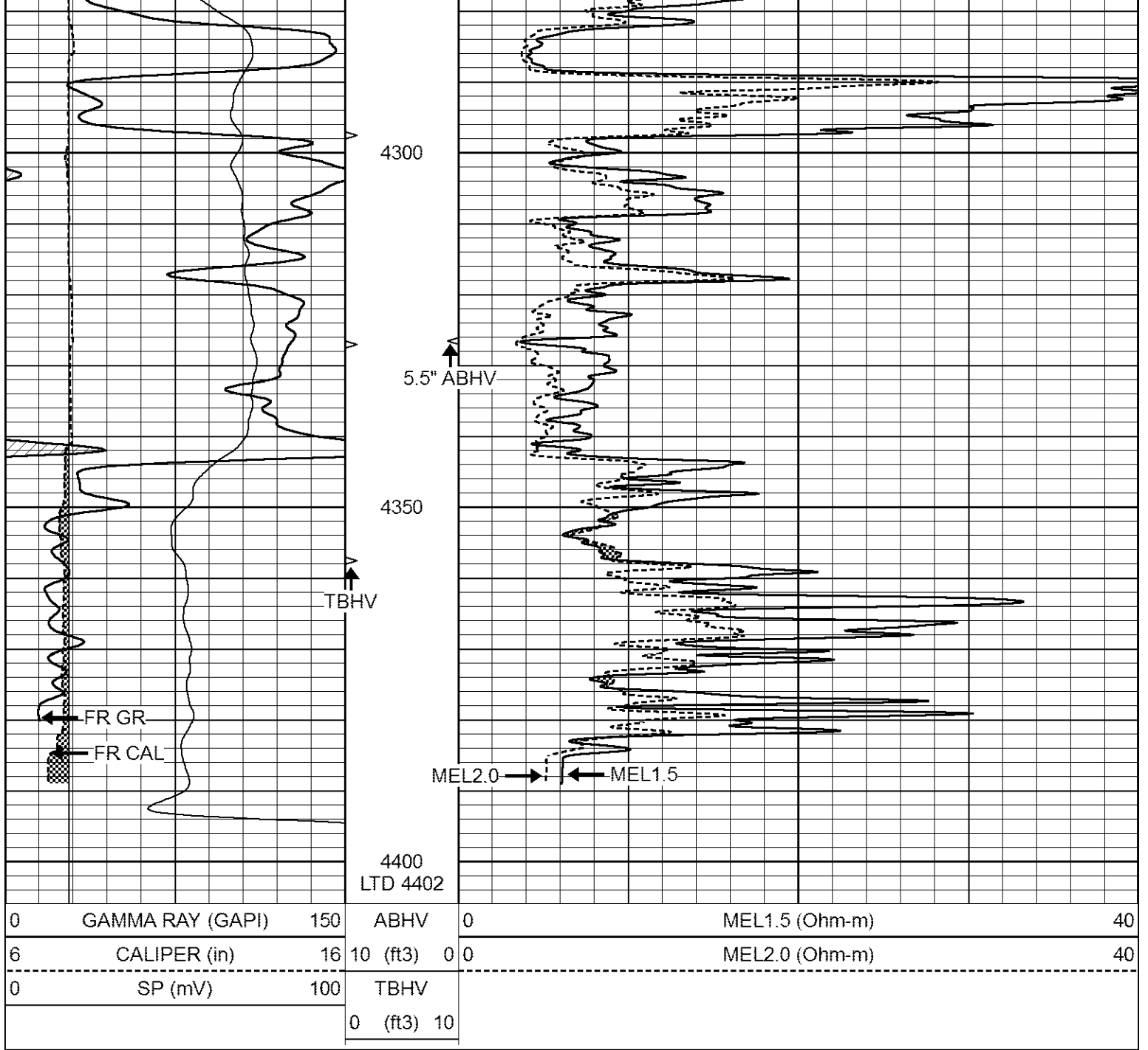
3750

3800







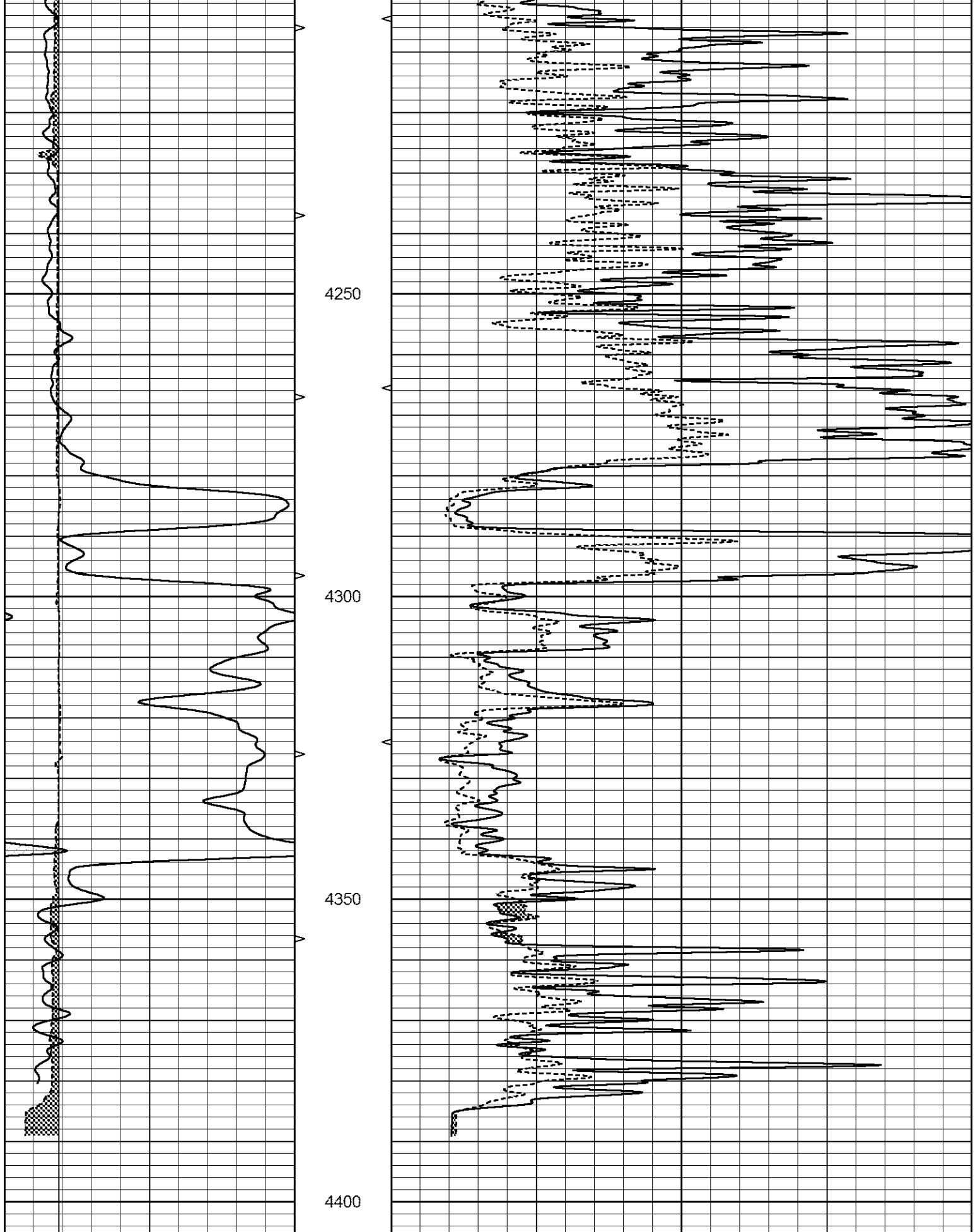


# REPEAT SECTION

Database File 6751pe.db  
 Dataset Pathname pass10.1R  
 Presentation Format \_micro  
 Dataset Creation Fri Jul 01 17:22:51 2022  
 Charted by Depth in Feet scaled 1:240

0	GAMMA RAY (GAPI)	150	ABHV	0	MEL1.5 (Ohm-m)	40
6	CALIPER (in)	16	10 (ft3)	0 0	MEL2.0 (Ohm-m)	40
			TBHV			
			0 (ft3)	10		





0	GAMMA RAY (GAPI)	150	ABHV	0	MEL1.5 (Ohm-m)	40
6	CALIPER (in)	16	10 (ft3)	0 0	MEL2.0 (Ohm-m)	40
			TBHV			

## Calibration Report

Database File 6751pe.db  
 Dataset Pathname pass11.1IDK  
 Dataset Creation Fri Jul 01 18:02:32 2022

## MICRO\_USR Calibration Report

Serial Number: 070910  
 Tool Model: ProbeL  
 Performed: Thu Jun 23 15:00:37 2022

Caliper Calibration: Gain=7.212 Offset=2.700

	Low Cal	High Cal
References	8.000	14.000
Readings	0.725	1.557

1.5" Calibration: Gain=30.000 Offset=1.400

	Low Cal	High Cal
References	0.000	20.000
Readings	0.004	1.335

2" Calibration: Gain=46.500 Offset=1.200

	Low Cal	High Cal
References	0.000	20.000
Readings	0.004	1.029

## Microlog Calibration Report

Serial-Model: 070910-ProbeL  
 Performed: (Not Performed)

	Readings			References			Results	
	Zero	Cal		Zero	Cal		m	b
Normal	0.0000	1.0000	V	0.0000	1.0000	Ohm-m	1.0000	0.0000
Inverse	0.0000	1.0000	V	0.0000	1.0000	Ohm-m	1.0000	0.0000
Caliper	0.0000	1.0000	V	0.0000	1.0000	in	1.0000	0.0000

## Gamma Ray Calibration Report

Serial Number: 070558  
 Tool Model: Probe1  
 Performed: Tue May 17 15:23:49 2022

Calibrator Value: 1.0 GAPI

Background Reading: 0.0 cps  
 Calibrator Reading: 1.0 cps

Sensitivity: 0.2200 GAPI/cps