



MIDWEST WIRELINE

# DUAL COMP POROSITY LOG

Company American Warrior, Inc.  
 Well Mann #1-28  
 Field Unnamed  
 County Thomas State Kansas

Company American Warrior, Inc.  
 Well Mann #1-28  
 Field Unnamed  
 County Thomas  
 State Kansas

Location: API #: 15-193-21127-00-00  
 SW NE NW SW  
 2020 FSL & 842 FWL  
 SEC 28 TWP 6S RGE 31W  
 Permanent Datum Ground Level Elevation 2955  
 Log Measured From Kelly Bushing  
 Drilling Measured From Kelly Bushing  
 Other Services  
 DIL  
 MEL/BHCS  
 K.B. 2963  
 D.F.  
 G.L. 2955

Date	5/14/2024						
Run Number	One						
Type Log	CNL/CDL						
Depth Driller	4576						
Depth Logger	4576						
Bottom Logged Interval	4555						
Top Logged Interval	3650						
Type Fluid In Hole	Chemical						
Salinity, PPM CL	2000						
Density	9.3						
Level	Full						
Max. Rec. Temp. F	122						
Operating Rig Time	4 Hours						
Equipment -- Location	P-108   HAYS						
Recorded By	T. Martin						
Witnessed By	Marc Downing						
Borehole Record							
Run No.	Bit	From	To	Size	Wgt.	From	To
One	12.25	00	354	8.625	23	00	354
Two	7.875	354	TD				
Casing Record							

<<< Fold Here >>>

All interpretations are opinions based on inferences from electrical or other measurements and Midwest Wireline LLC cannot and does not guarantee the accuracy or correctness of any interpretation, and Midwest Wireline LLC will not be liable or responsible for any loss, costs, damages, or expenses incurred or sustained by anyone resulting from any interpretation made by any of our officers, agents or employees.

Comments

N/A DENOTES NOT AVAILABLE OR NON-APPLICABLE.

Rexford, KS, SE corner, 1 N to Y Rd,  
 1 W, 1 N, 2 W, N into

Log Measured From: Kelly Bushing 8 Ft. Above Permanent Datum

THANK YOU FOR USING MIDWEST WIRELINE LLC  
 785-625-3858

Your Midwest Wireline Crew

Engineer: T. Martin  
 Operator:  
 Operator:  
 Operator:

This Log Record Was Witnessed By

Primary Witness: Marc Downing  
 Secondary Witness:  
 Secondary Witness:  
 Secondary Witness:

Sensor	Offset (ft)	Schematic	Description	Length (ft)	O.D. (in)	Weight (lb)
GR	32.75		GR-M&W (102)	3.00	3.50	50.00
CNLSC CNSSC	29.65 28.90		CNT-M&W (207)	5.00	3.50	100.00
LSD DCAL SSD	20.60 20.58 20.10		CDL-M&W (305-24)	8.50	4.00	250.00
RLL3F RLL3	15.50 15.50		DIL-M&W (507)	18.25	3.50	220.00
CILD	8.33					
CILM	4.50					
SP	0.20					

Dataset: amwar\_mann #1-28.db: field/well/Stack/pass3.1  
 Total length: 34.75 ft  
 Total weight: 620.00 lb  
 O.D.: 4.00 in

# Log Variables

DatabaseC:\ProgramData\Warrior\Data\amwar\_mann #1-28.db  
 Dataset field/well/Stack/pass3.1/\_vars\_

## Top - Bottom

BOREID in 7.875	BOTTEMP degF 122	CASEOD in 5.5	CASETHCK in 0	FLUIDDEN g/cc 1	MATRXDEN g/cc 2.71	NPORSEL Limestone	PERFS No
SNDERR mmho/m 0	SNDERRM mmho/m -3.5	SPSHIFT mV 635	SRFTEMP degF 80	SZCOR Off	TDEPTH ft 4576		

## Variable Description

BOREID : Borehole I.D.  
 BOTTEMP : Bottom Hole Temperature  
 CASEOD : Casing O.D.  
 CASETHCK : Casing Thickness  
 FLUIDDEN : Fluid Density  
 MATRXDEN : Matrix Density  
 NPORSEL : Neutron Porosity Curve Select

PERFS : Perforation Flag  
 SNDERR : Deep Sonde Error Correction  
 SNDERRM : Medium Sonde Error Correction  
 SPSHIFT : S.P. Baseline Offset  
 SRFTEMP : Surface Temperature  
 SZCOR : CN Size Cor. ?  
 TDEPTH : Total Depth

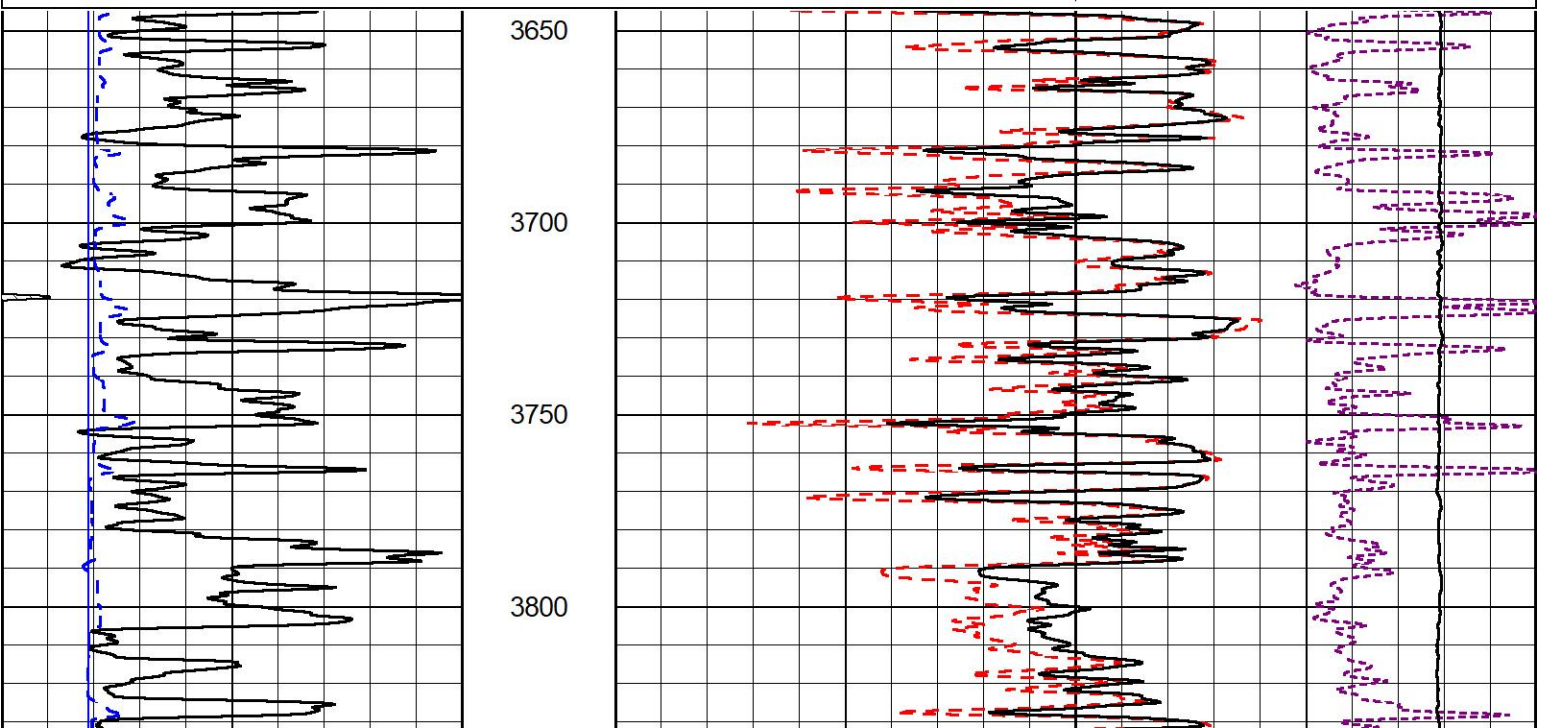


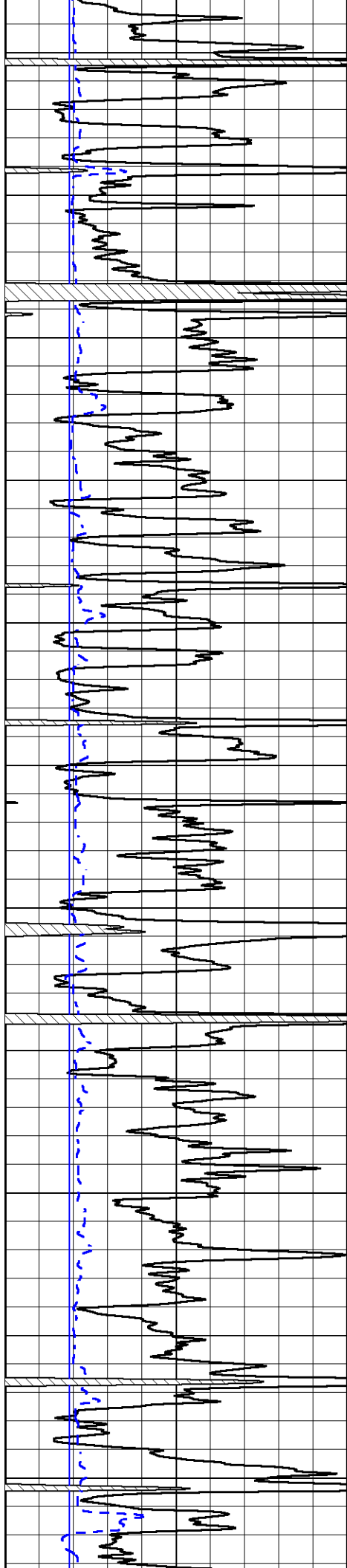
## 2" SCALE BULK DENSITY

### MAIN PASS

Database File amwar\_mann #1-28.db  
 Dataset Pathname Stack/pass3.3  
 Presentation Format \_cdl  
 Dataset Creation Tue May 14 16:40:26 2024  
 Charted by Depth in Feet scaled 1:600

0	Gamma Ray (GAPI)	150	30	Compensated Density (pu)	-10	
6	Caliper (in)	16	2	Bulk Density (g/cc)	3	
			15000	Line Tension (lb)	0	
				-0.25	Correction (g/cc)	0.25





3850

3900

3950

4000

4050

4100

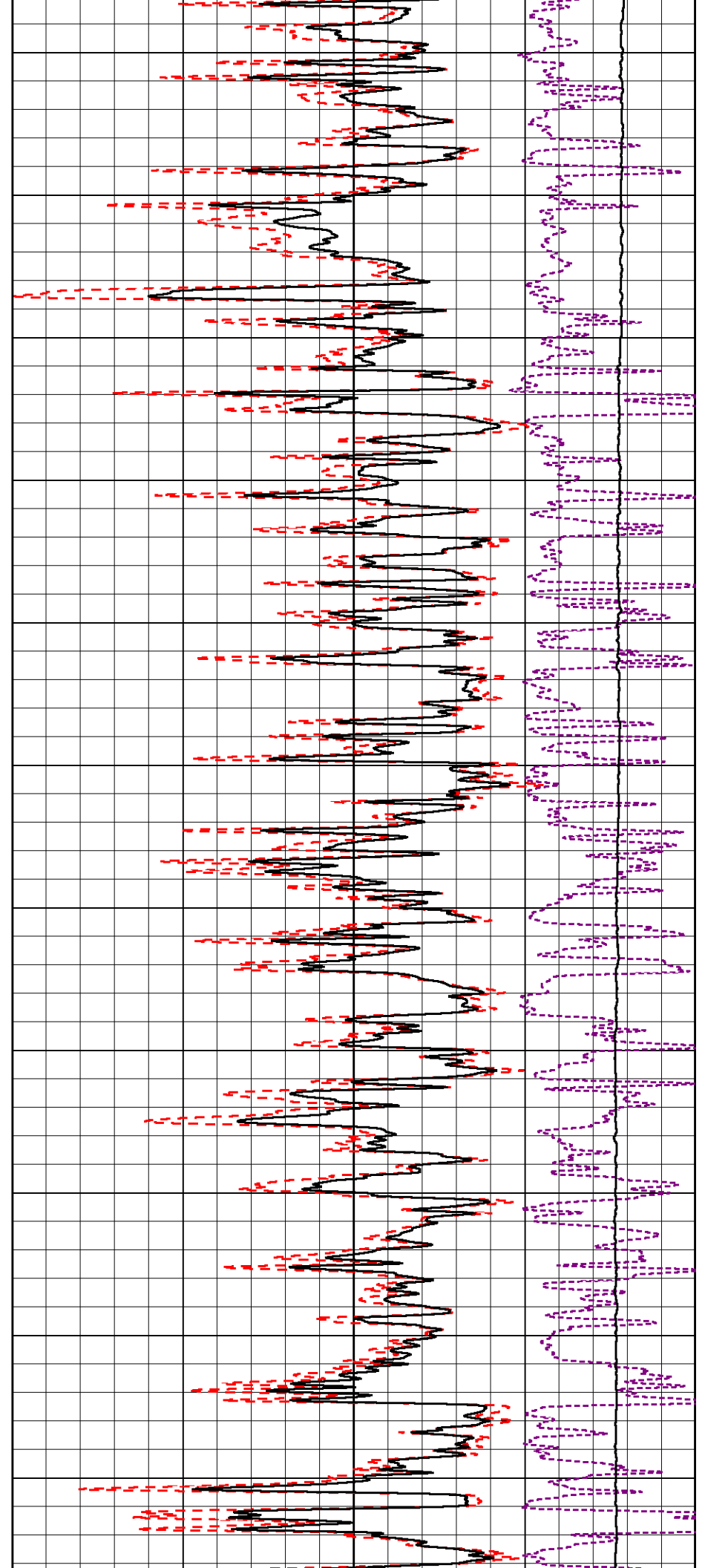
4150

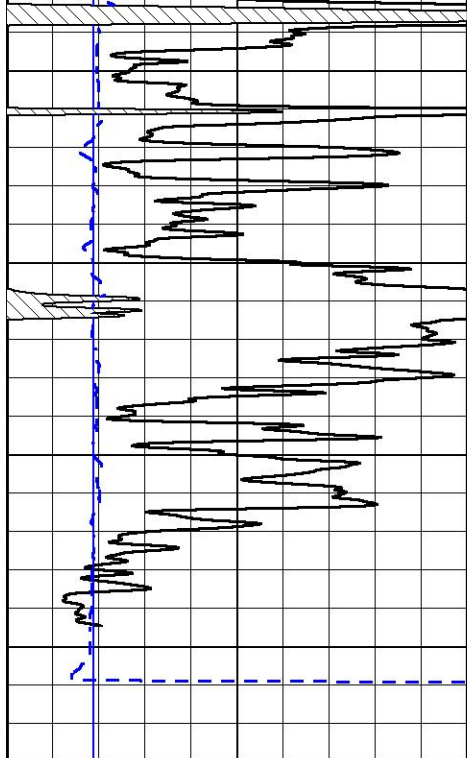
4200

4250

4300

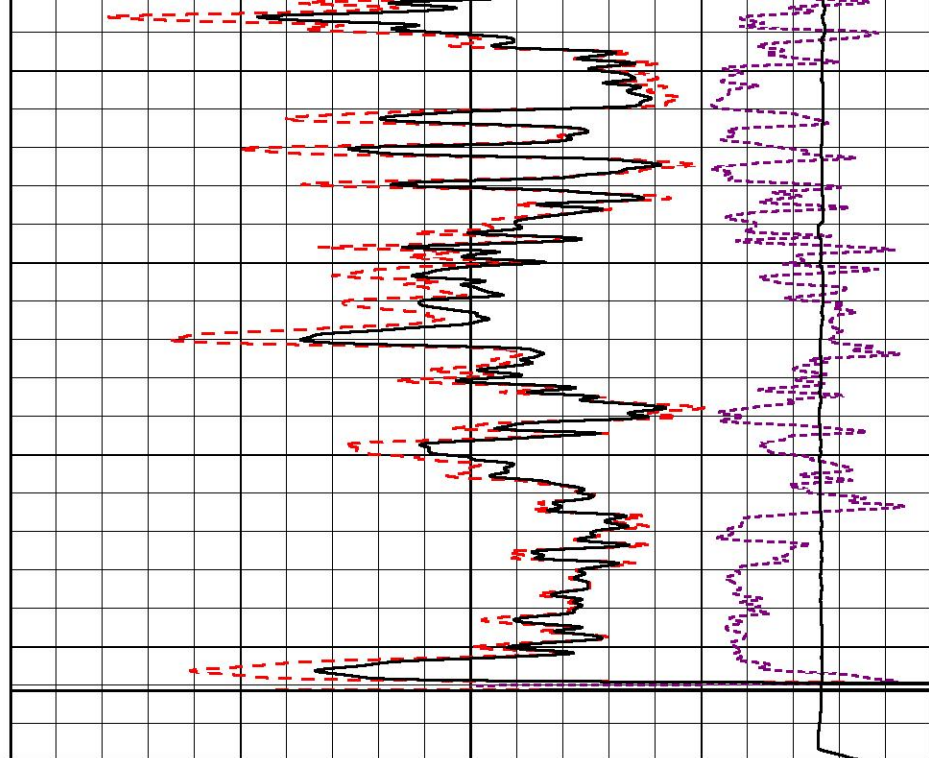
4350





4400  
4450  
4500  
4550

0	Gamma Ray (GAPI)	150
6	Caliper (in)	16



30	Compensated Density (pu)	-10
2	Bulk Density (g/cc)	3
15000	Line Tension (lb)	0
-0.25	Correction (g/cc)	0.25



MIDWEST WIRELINE

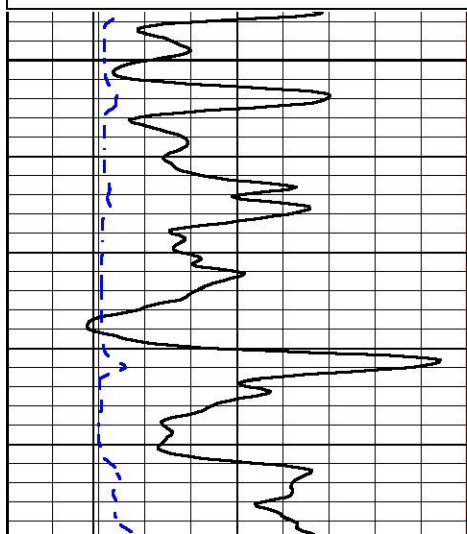
## DETAIL SECTION

### MAIN PASS

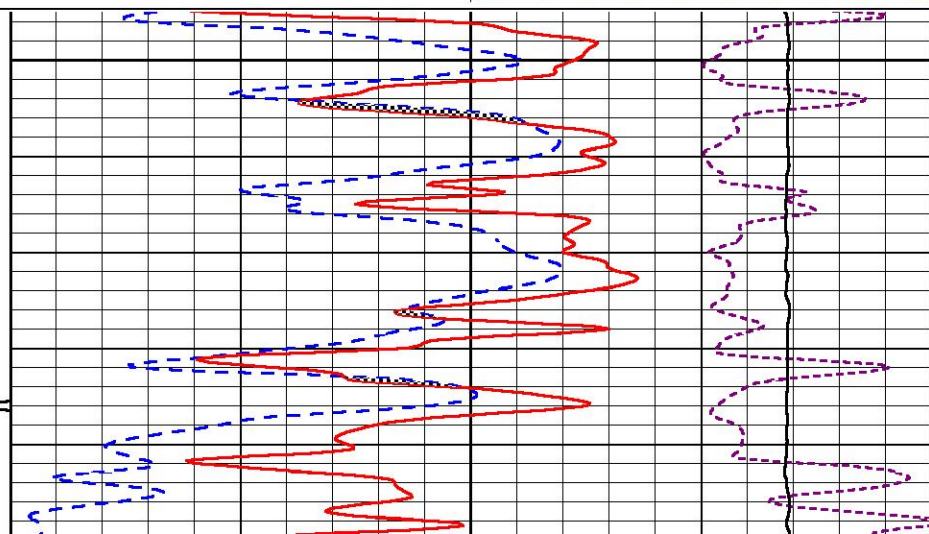
Database File        amwar\_mann #1-28.db  
 Dataset Pathname    Stack/pass3.1  
 Presentation Format    \_CNDLS~1  
 Dataset Creation      Tue May 14 16:58:16 2024  
 Charted by            Depth in Feet scaled 1:240

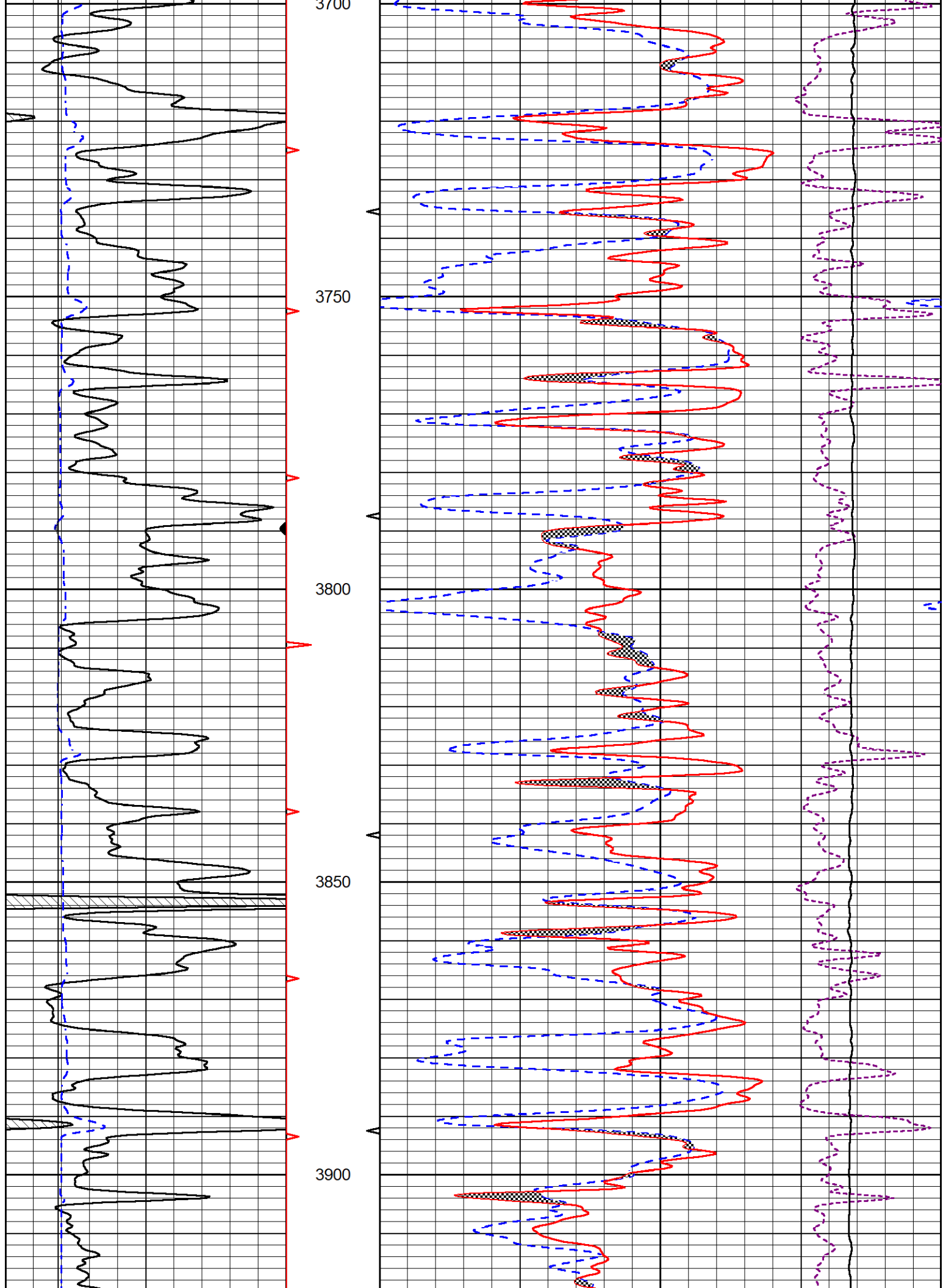
0	Gamma Ray (GAPI)	150
6	Caliper (in)	16

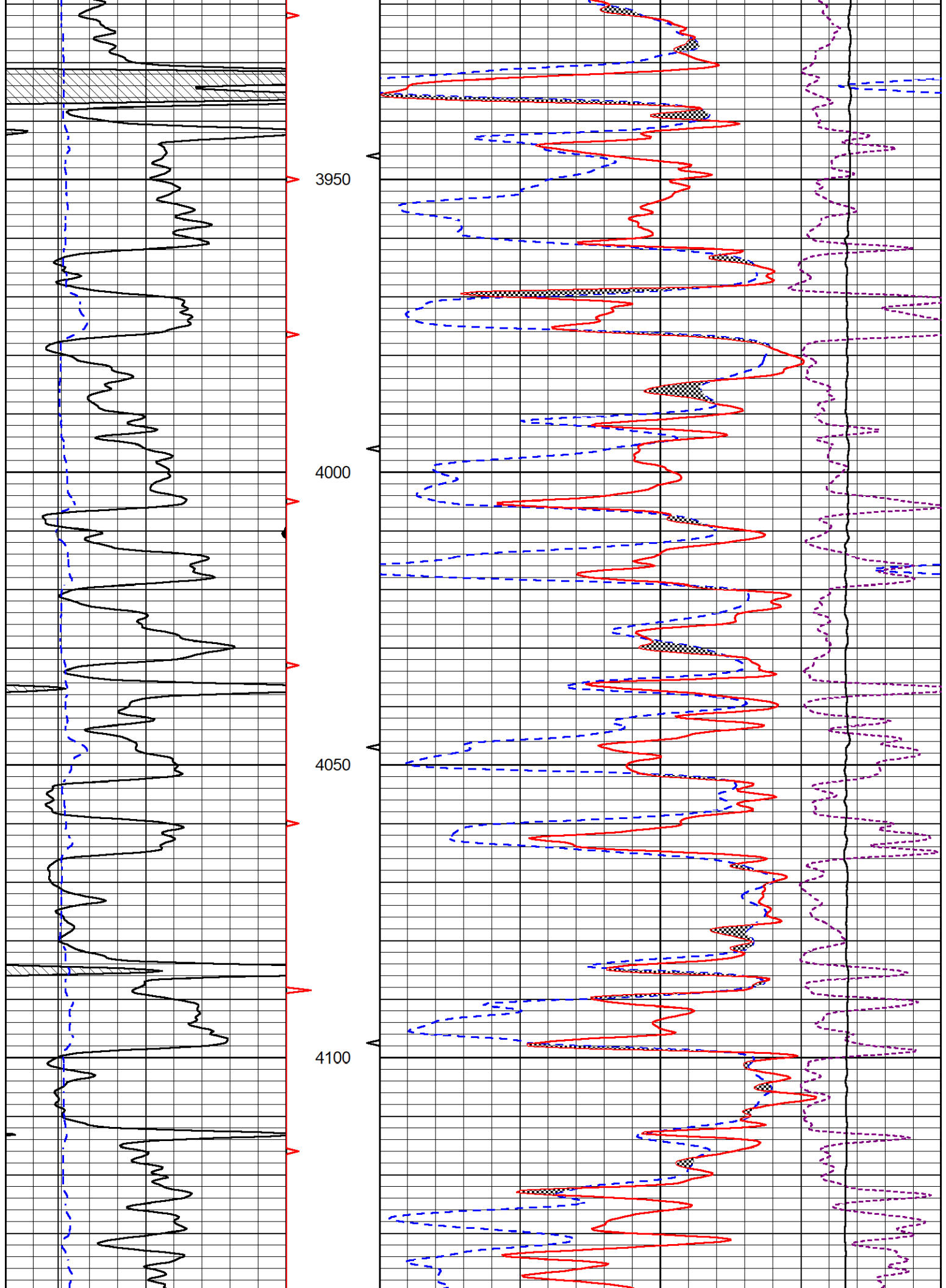
30	Compensated Neutron (pu)	-10
30	Compensated Density (pu)	-10
10000	Line Tension (lb)	0
-0.25	Correction (g/cc)	0.25

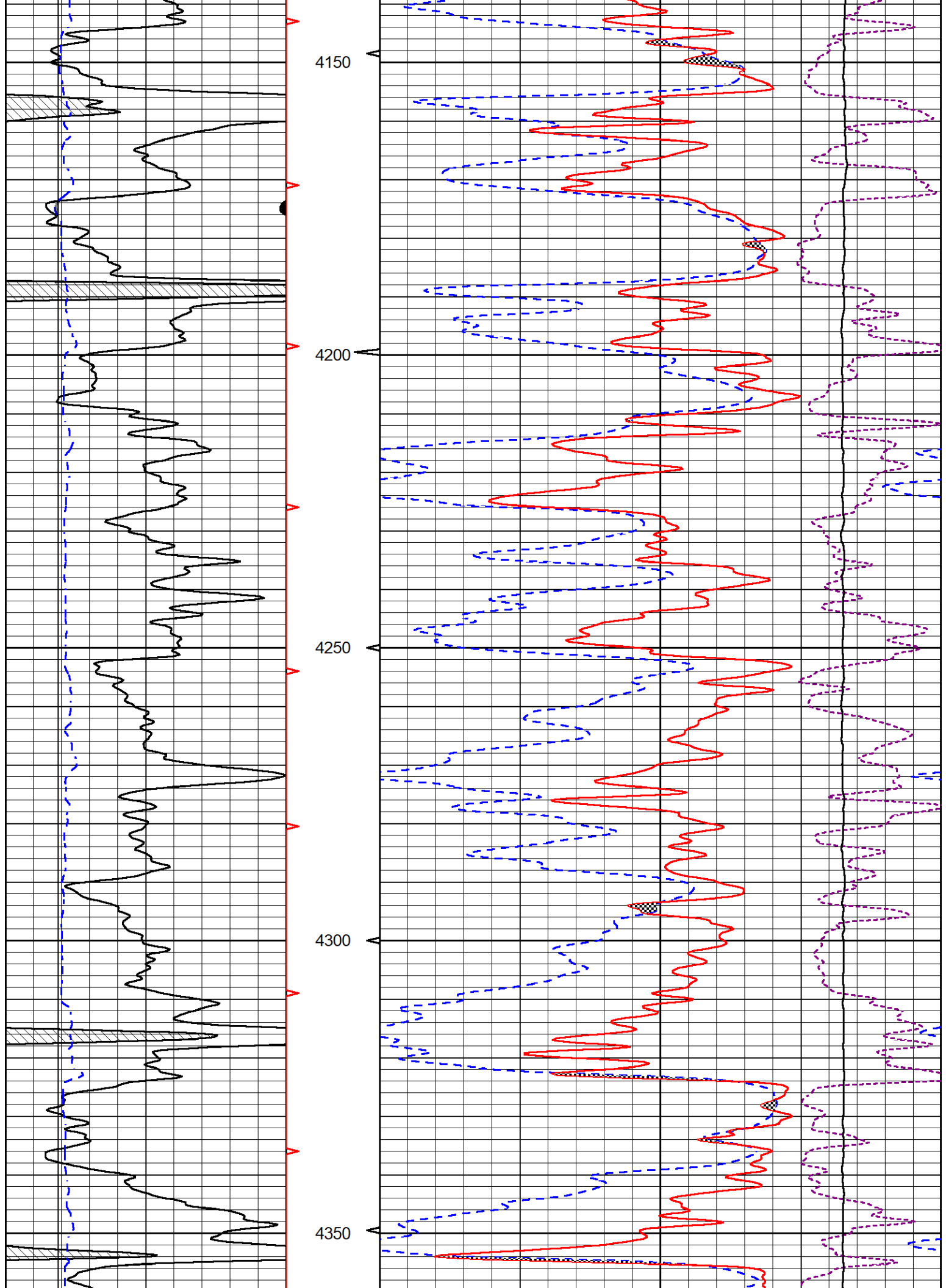


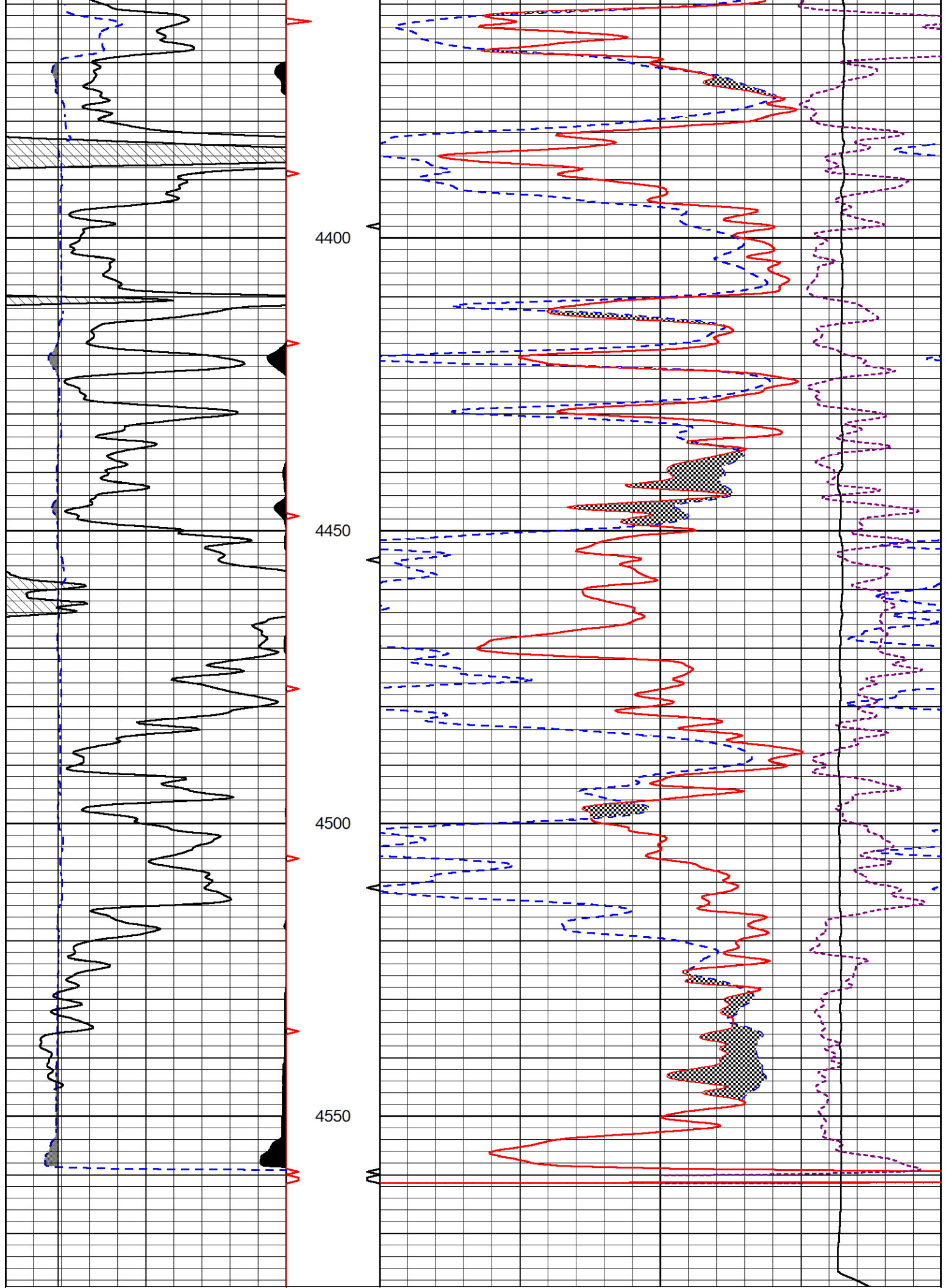
3650  
3700











0	Gamma Ray (GAPI)	150
6	Caliper (in)	16

30	Compensated Neutron (pu)	-10
30	Compensated Density (pu)	-10
10000	Line Tension (lb)	0
	-0.25 Correction (g/cc)	0.25



MIDWEST WIRELINE

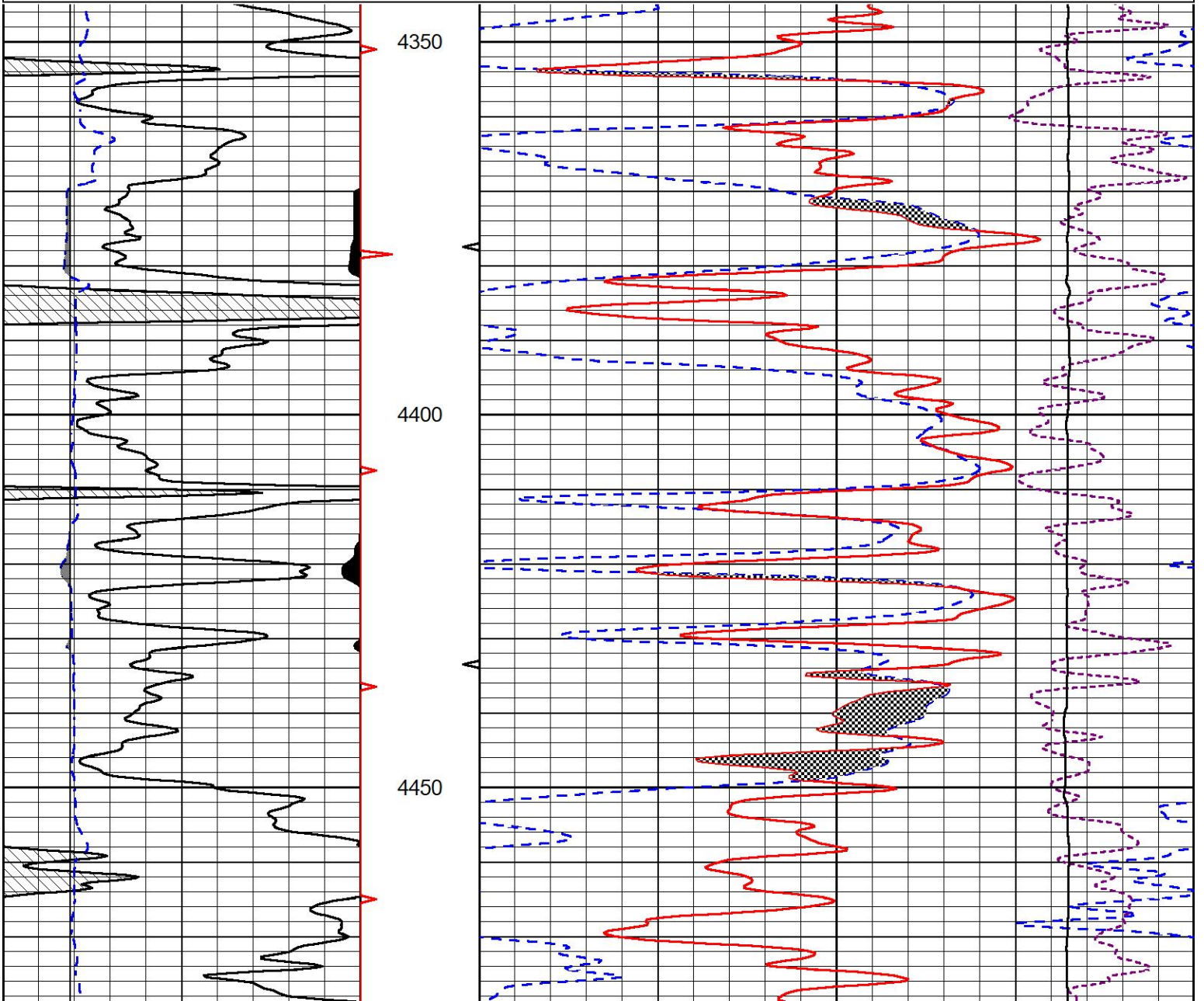
# REPEAT SECTION

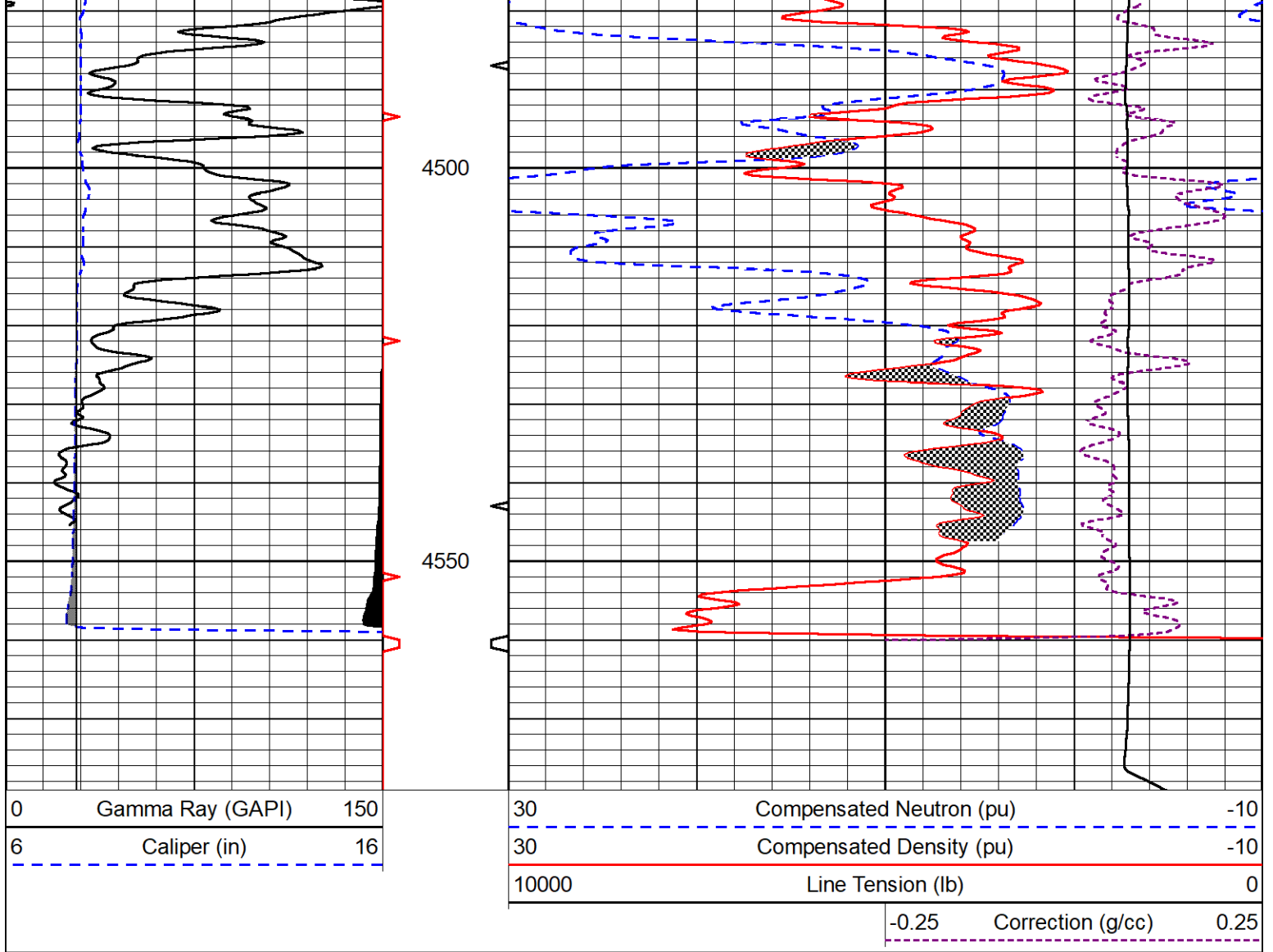
## REPEAT PASS

Database File amwar\_mann #1-28.db  
 Dataset Pathname Stack/pass2.1  
 Presentation Format \_CNDLS~1  
 Dataset Creation Tue May 14 16:39:23 2024  
 Charted by Depth in Feet scaled 1:240

0	Gamma Ray (GAPI)	150
6	Caliper (in)	16

30	Compensated Neutron (pu)	-10
30	Compensated Density (pu)	-10
10000	Line Tension (lb)	0
	-0.25 Correction (g/cc)	0.25





Calibration Report	
Database File	amwar_mann #1-28.db
Dataset Pathname	Stack/pass3.1
Dataset Creation	Tue May 14 16:58:16 2024

Dual Induction Calibration Report	
Serial-Model:	507-M&W
Surface Cal Performed:	Fri Jul 14 14:17:56 2023

Loop:	Readings		References		Results		
	Air	Loop	Air	Loop	m	b	
Deep	68.570	638.100	0.000	255.800	mmho/m	0.500	-37.000
Medium	184.288	716.191	0.000	255.800	mmho/m	0.450	-79.000

Compensated Density Calibration Report	
Serial-Model:	305-24-M&W
Source #:	20762B
Master Calibration Performed:	Tue Feb 6 18:43:03 2024

Master Calibration

	Density		Far Detector	Near Detector	
Magnesium	1.680	g/cc	5028.88	5761.57	cps
Aluminum	2.560	g/cc	1122.37	3952.02	cps
Spine Angle = 75.89			Density/Spine Ratio = 0.569		
	Size		Reading		
Small Ring	4.00	in	1.74		
Large Ring	14.00	in	1.38		

**Compensated Neutron Calibration Report**

Serial Number: 207  
Tool Model: M&W

**CALIBRATION**

Detector	Readings	Target	Normalization
Short Space	6240.00 cps	1000.00 cps	1.6025
Long Space	460.00 cps	1000.00 cps	1.9500

**Gamma Ray Calibration Report**

Serial Number: 102  
Tool Model: M&W  
Performed: Mon Sep 25 22:02:33 2023

Calibrator Value: 1.0 GAPI

Background Reading: 0.0 cps  
Calibrator Reading: 1.0 cps

Sensitivity: 0.5250 GAPI/cps

	<b>Company</b>	American Warrior, Inc.
	<b>Well</b>	Mann #1-28
	<b>Field</b>	Unnamed
	<b>County</b>	Thomas
	<b>State</b>	Kansas