



MIDWEST WIRELINE

BOREHOLE COMPENSATED SONIC LOG

Company American Warrior, Inc.
Well Mann #1-28
Field Unnamed
County Thomas **State** Kansas

Company American Warrior, Inc.
 Well Mann #1-28
 Field Unnamed
 County Thomas
 State Kansas

Location: SEC 28 TWP 6S RGE 31W SW NE NW SW 2020 FSL & 842 FWL	API #: 15-193-21127-00-00 Ground Level Elevation 2955 Log Measured From Kelly Bushing Drilling Measured From Kelly Bushing
Other Services CNL/CDL MEL/DIL	

Date	5/14/2024			
Run Number	Two			
Type Log	BHCS			
Depth Driller	4576			
Depth Logger	4576			
Bottom Logged Interval	4564			
Top Logged Interval	350			
Type Fluid In Hole	Chemical			
Salinity, PPM CL	2000			
Density	9.3			
Level	Full			
Max. Rec. Temp. F	122			
Operating Rig Time	4 Hours			
Equipment -- Location	P-108 HAYS			
Recorded By	T. Martin			
Witnessed By	Marc Downing			

Borehole Record		Casing Record					
Run No.	Bit	From	To	Size	Wgt.	From	To
One	12.25	00	354	8.625	23	00	354
Two	7.875	354	TD				

<<< Fold Here >>>

All interpretations are opinions based on inferences from electrical or other measurements and Midwest Wireline LLC cannot and does not guarantee the accuracy or correctness of any interpretation, and Midwest Wireline LLC will not be liable or responsible for any loss, costs, damages, or expenses incurred or sustained by anyone resulting from any interpretation made by any of our officers, agents or employees.

Comments

N/A DENOTES NOT AVAILABLE OR NON-APPLICABLE.

Rexford, KS, SE corner, 1 N to Y Rd,
1 W, 1 N, 2 W, N into

Log Measured From: Kelly Bushing 8 Ft. Above Permanent Datum

THANK YOU FOR USING MIDWEST WIRELINE LLC
 785-625-3858

Your Midwest Wireline Crew Engineer: T. Martin Operator: Operator: Operator:	This Log Record Was Witnessed By Primary Witness: Marc Downing Secondary Witness: Secondary Witness: Secondary Witness:
---	--

Sensor	Offset (ft)	Schematic	Description	Length (ft)	O.D. (in)	Weight (lb)
MCAL MI MN	25.50 25.50 25.50		ML-GO (G002)	5.00	3.50	100.00
			CENT-PENGO (4-PENGO)	4.25	3.00	70.00
WVF4 WVF1	12.25 12.25		SLT-PENGO (601) 3 1/2 BHC Sonic	16.00	3.50	300.00
WVF3 WVF2	10.25 10.25					
			CENT-PENGO (3-PENGO)	4.25	3.00	70.00

Dataset: amwar_mann #1-28.db: field/well/SonMel/pass3.1
 Total length: 29.50 ft
 Total weight: 540.00 lb
 O.D.: 3.50 in

Log Variables

DatabaseC:\ProgramData\Warrior\Data\amwar_mann #1-28.db
 Dataset field/well/Stack/pass3.1/_vars_

Top - Bottom

BOREID in 7.875	BOTTEMP degF 122	CASEOD in 5.5	CASETHCK in 0	FLUIDDEN g/cc 1	MATRXDEN g/cc 2.71	NPORSEL Limestone	PERFS No
SNDERR mmho/m 0	SNDERRM mmho/m -3.5	SPSHIFT mV 635	SRFTEMP degF 80	SZCOR Off	TDEPTH ft 4576		

Variable Description

BOREID : Borehole I.D.
 BOTTEMP : Bottom Hole Temperature
 CASEOD : Casing O.D.
 CASETHCK : Casing Thickness
 FLUIDDEN : Fluid Density
 MATRXDEN : Matrix Density
 NPORSEL : Neutron Porosity Curve Select

PERFS : Perforation Flag
 SNDERR : Deep Sonde Error Correction
 SNDERRM : Medium Sonde Error Correction
 SPSHIFT : S.P. Baseline Offset
 SRFTEMP : Surface Temperature
 SZCOR : CN Size Cor. ?
 TDEPTH : Total Depth

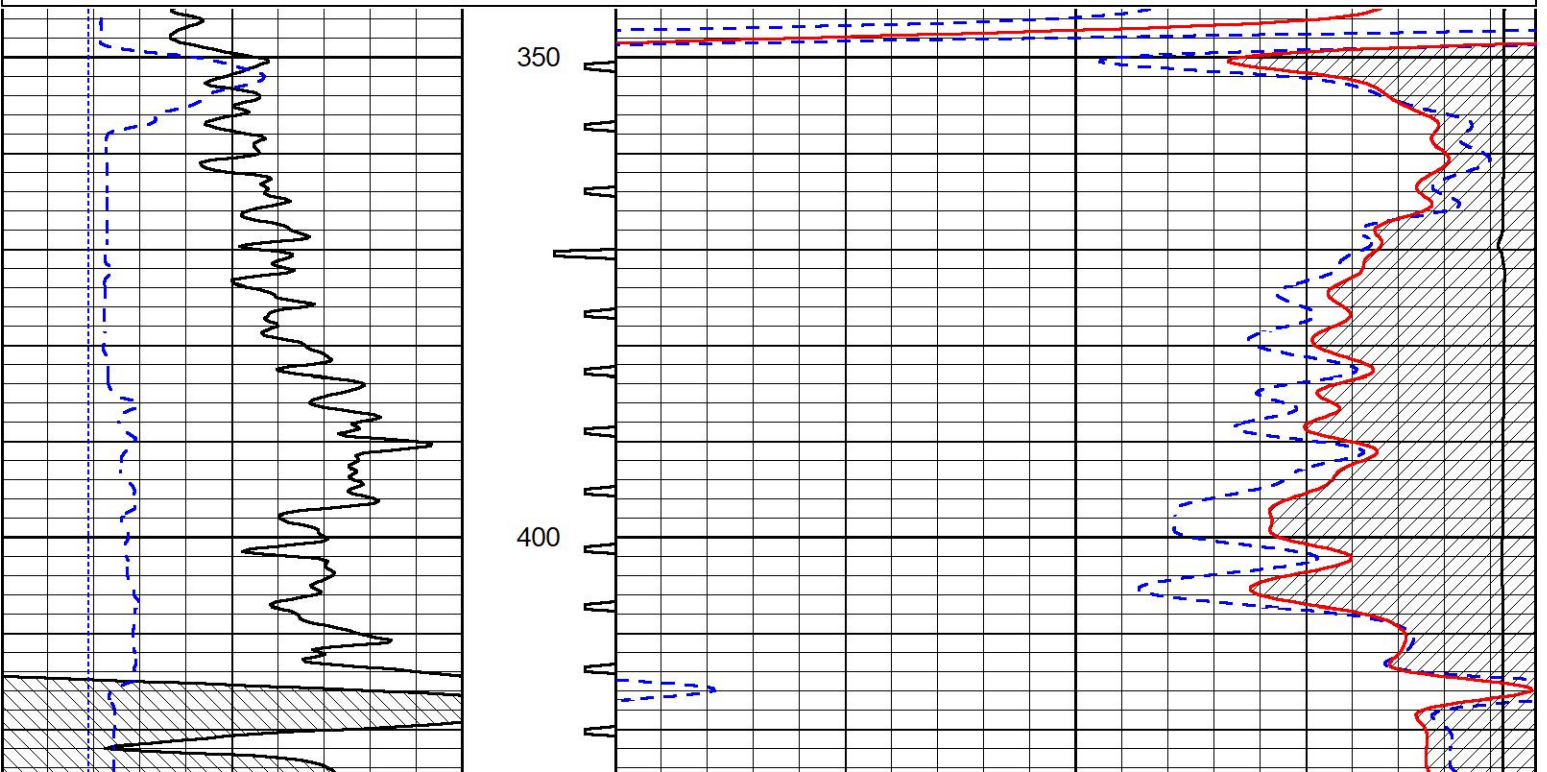


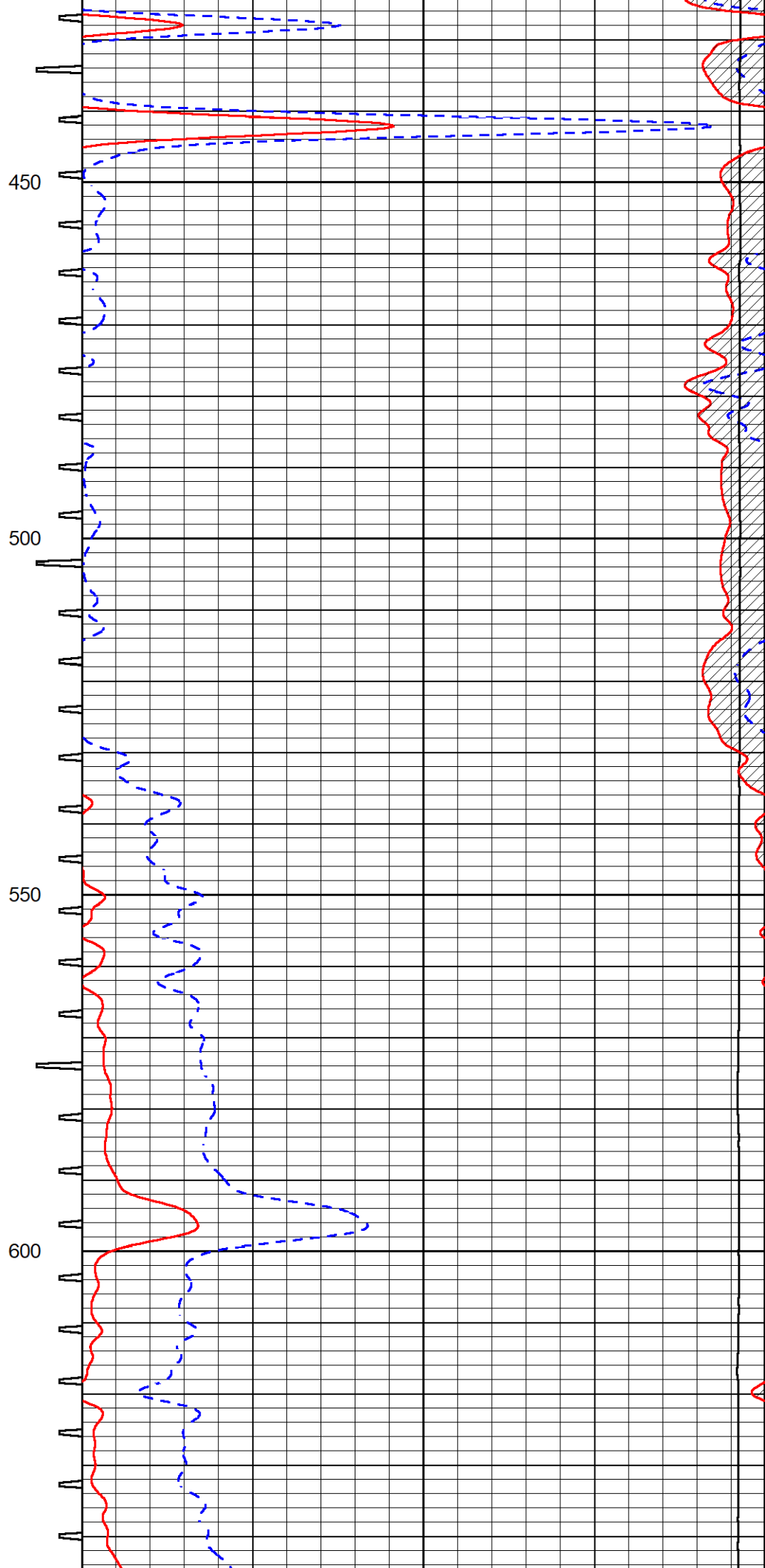
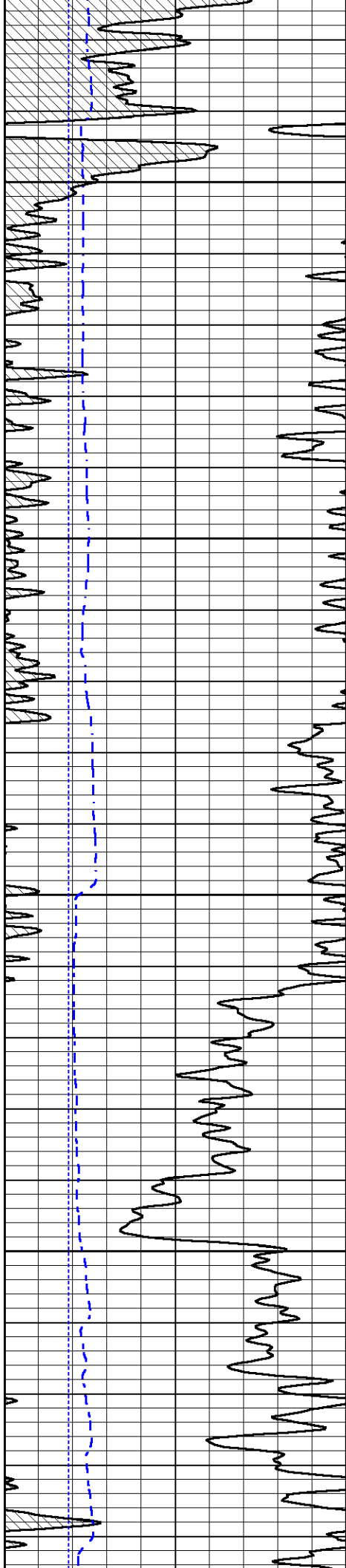
DETAIL SECTION

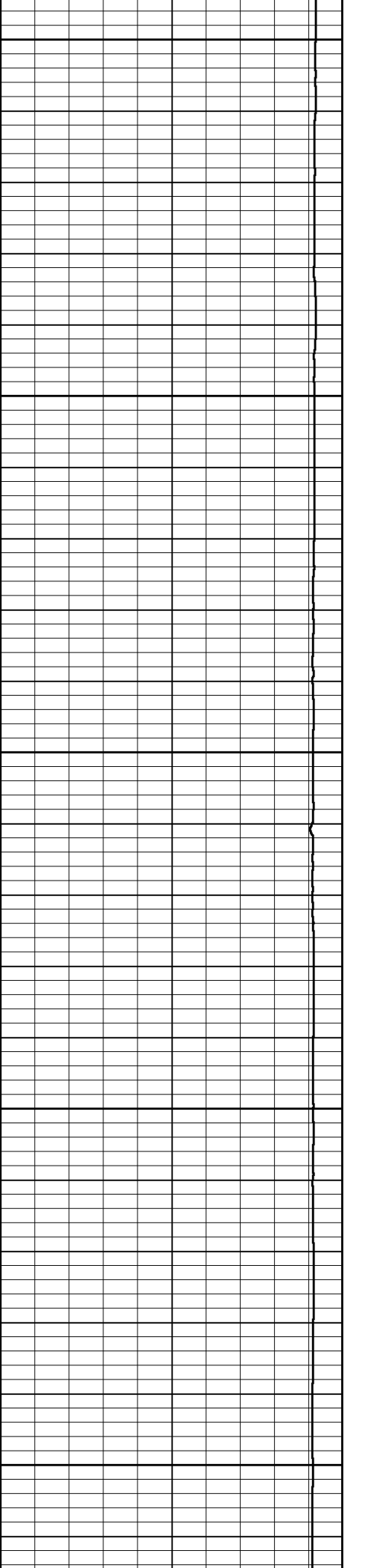
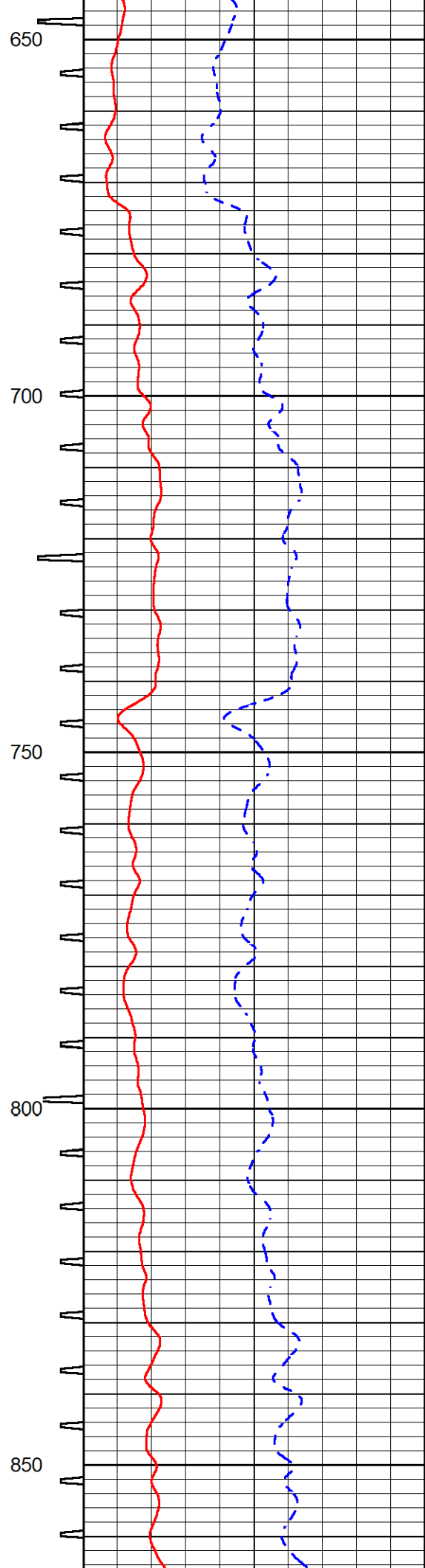
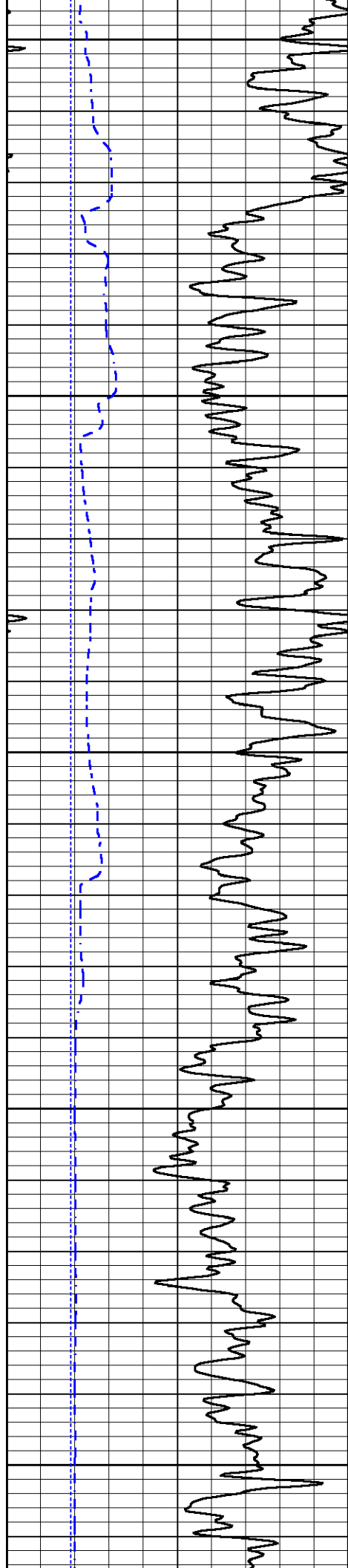
MAIN PASS

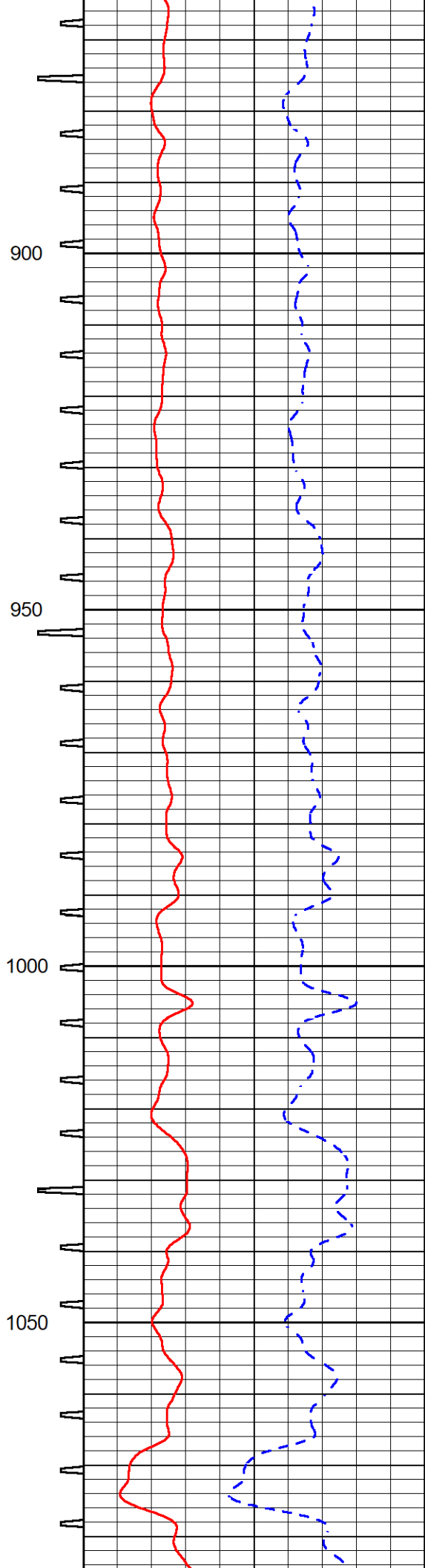
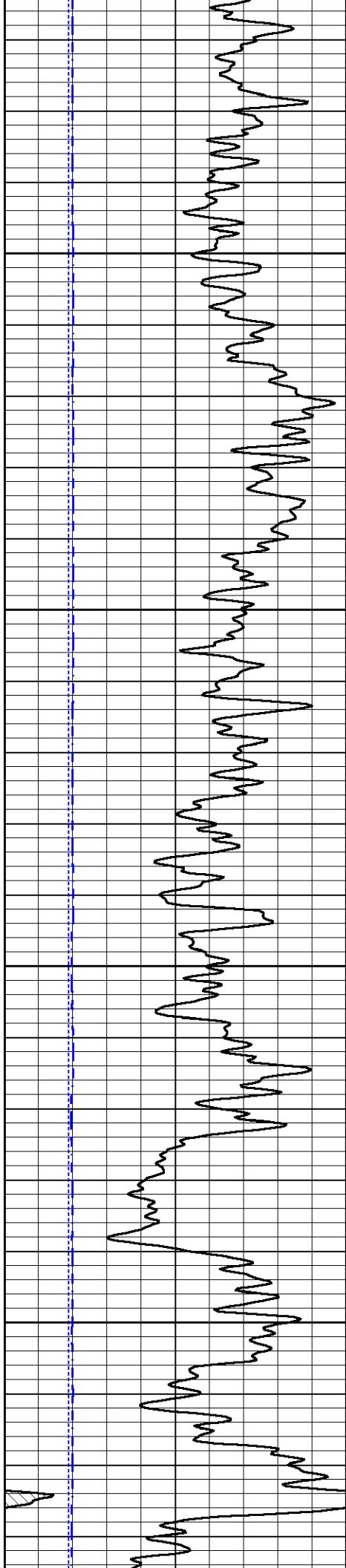
Database File amwar_mann #1-28.db
 Dataset Pathname Stack/pass3.1
 Presentation Format _sonic
 Dataset Creation Tue May 14 16:58:16 2024
 Charted by Depth in Feet scaled 1:240

0	Gamma Ray (GAPI)	150	Sonic Int	140	Delta Time (usec/ft) (usec/ft)	40
150	GR (GAPI)	300	5 (msec) 0	30	Sonic Porosity (pu) (pu)	-10
6	DCAL (in)	16		15000	Line Tension (lb)	0







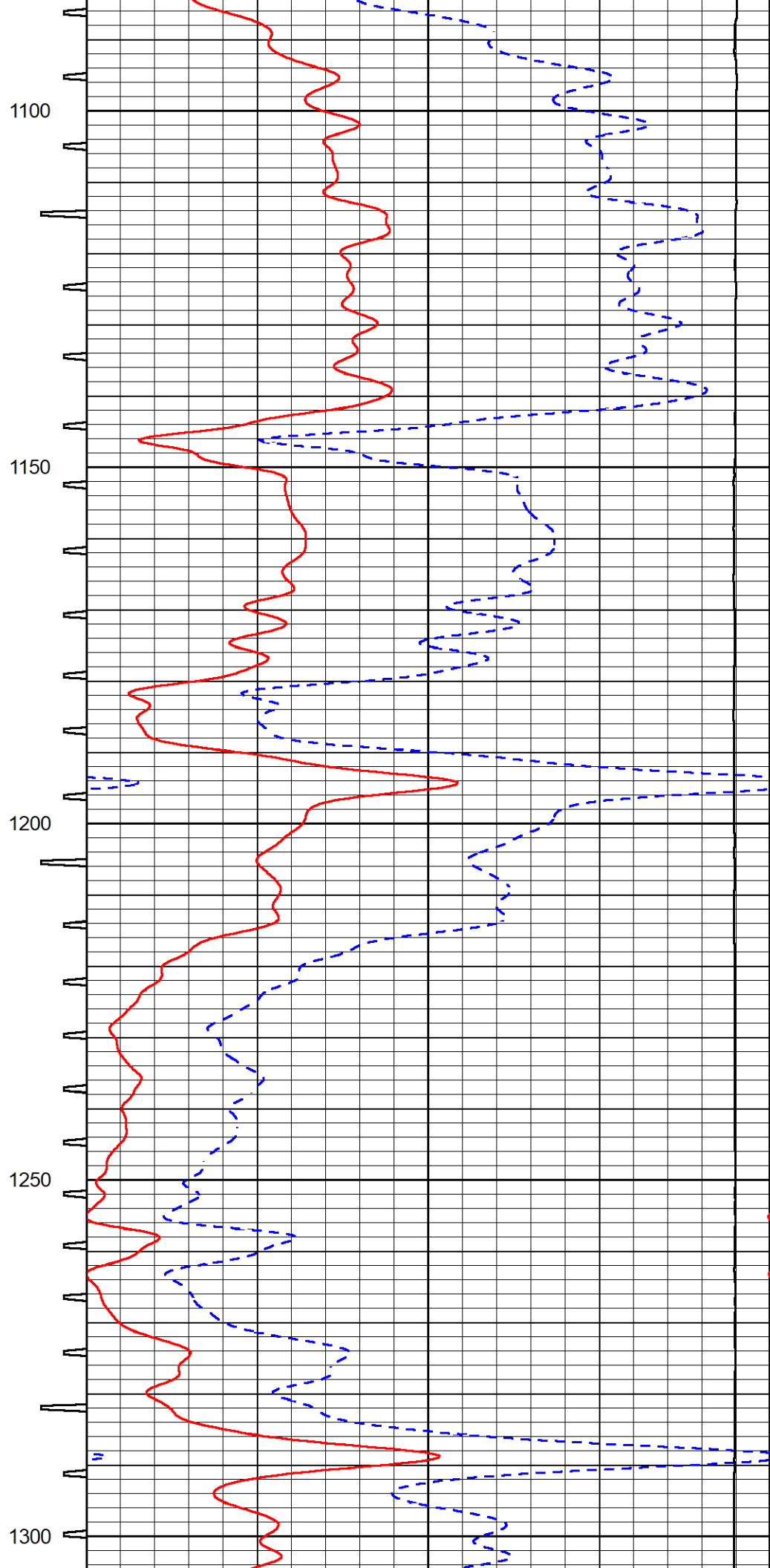
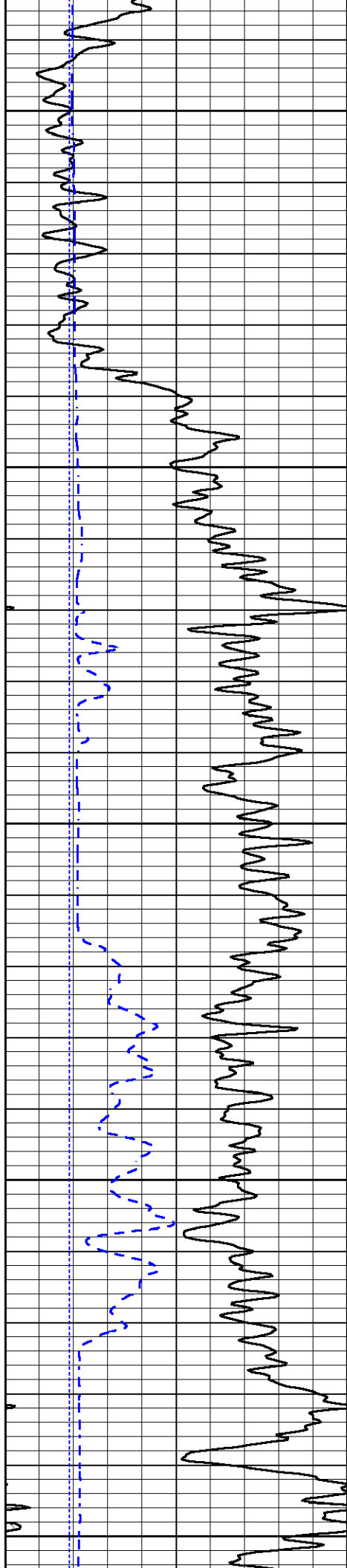


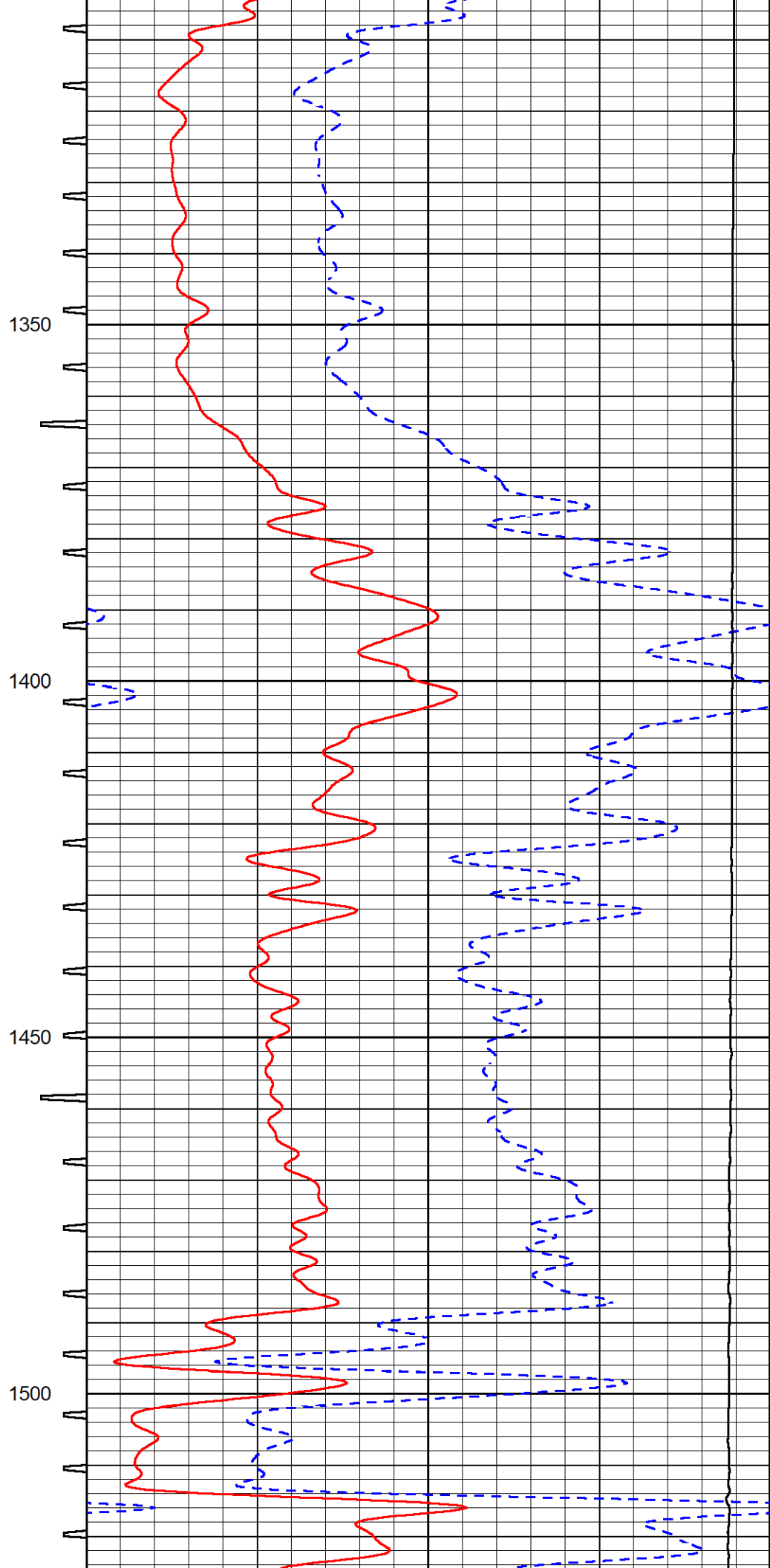
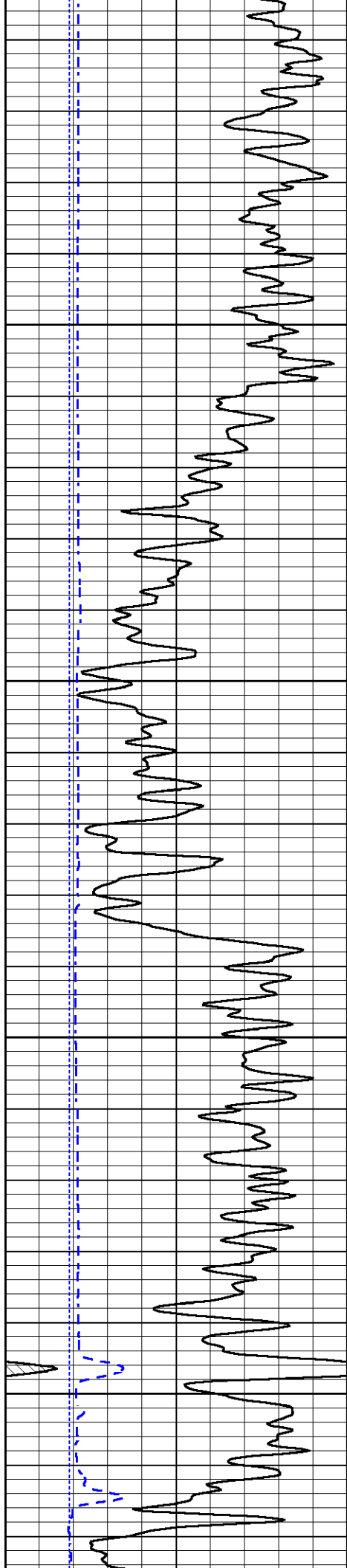
900

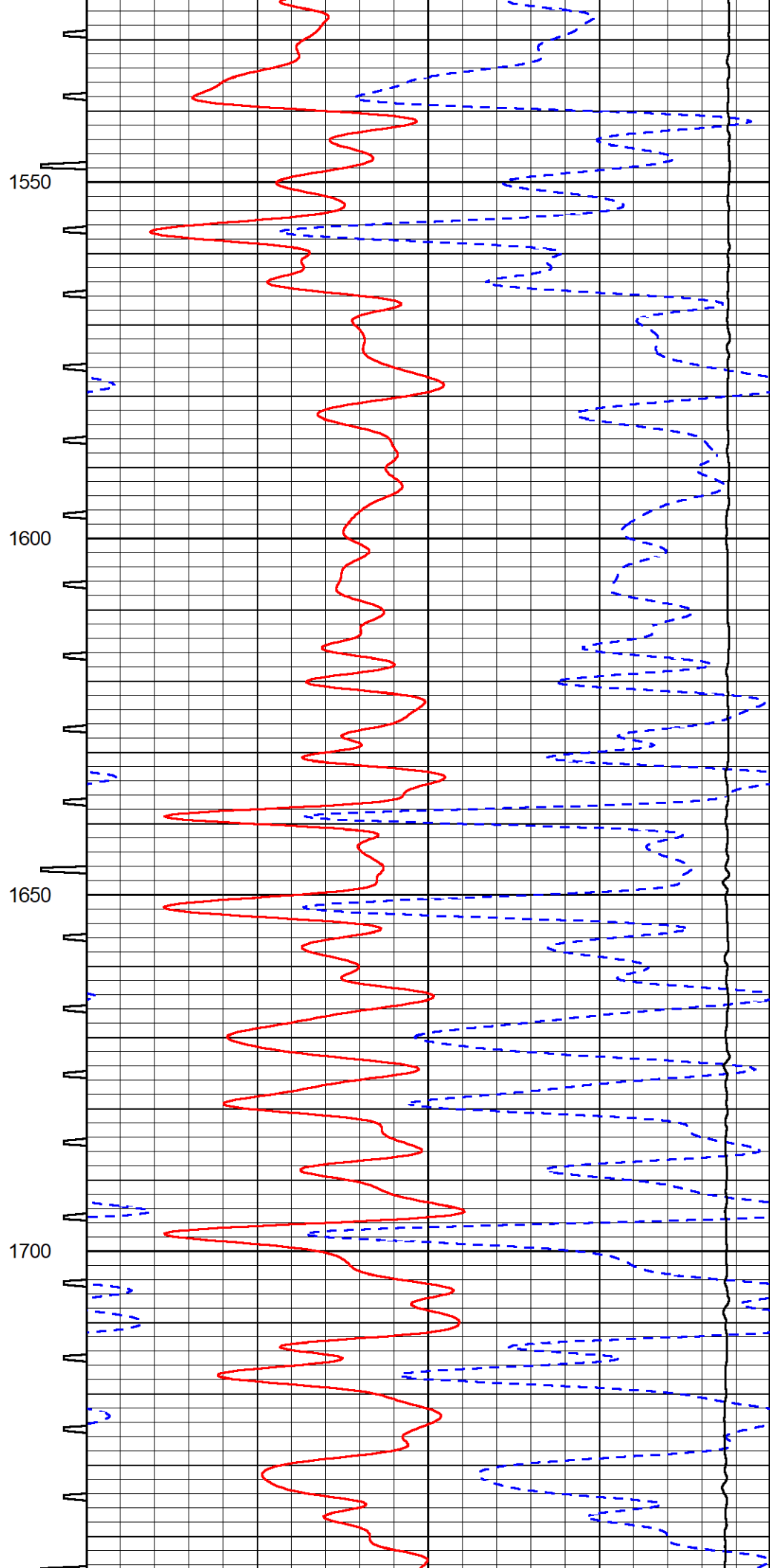
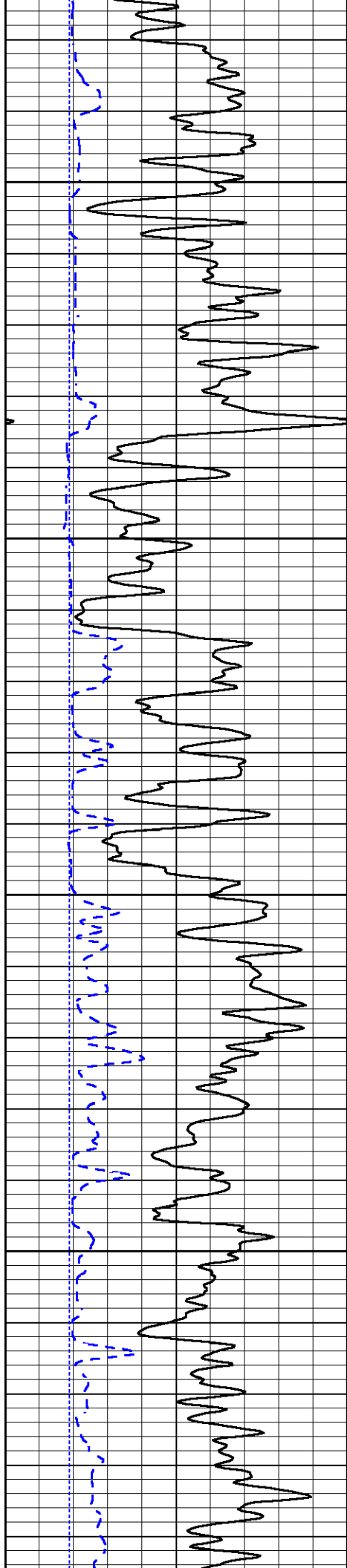
950

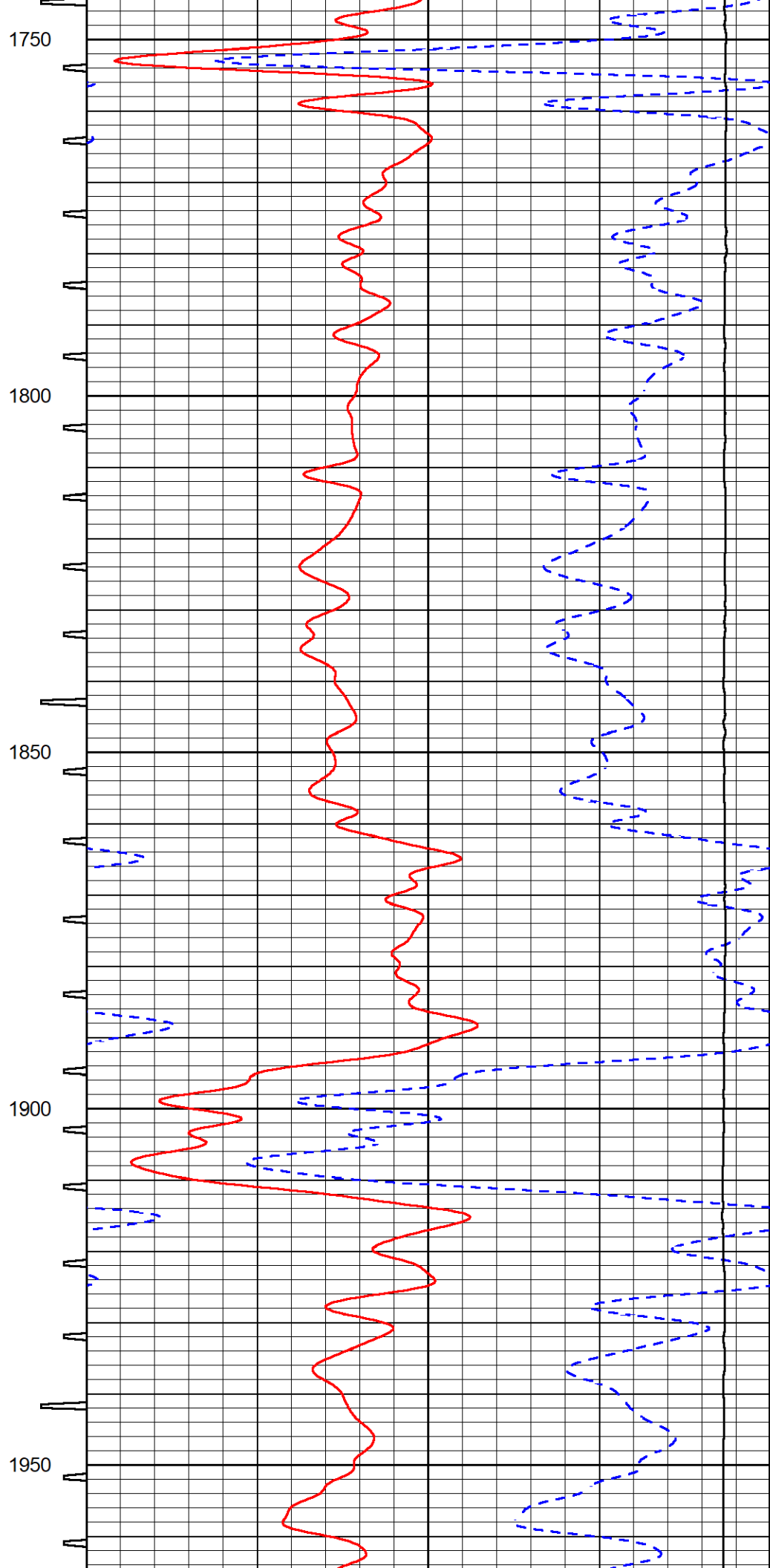
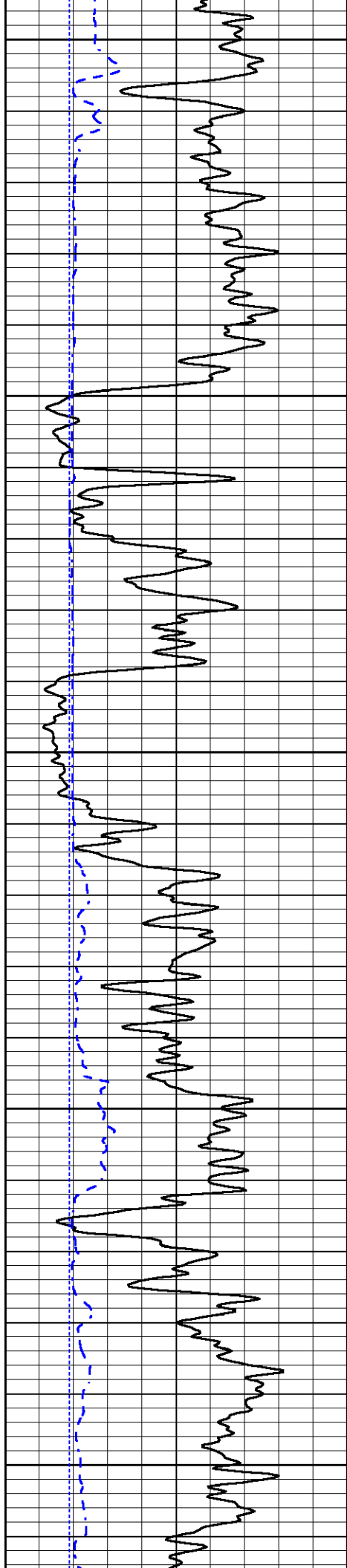
1000

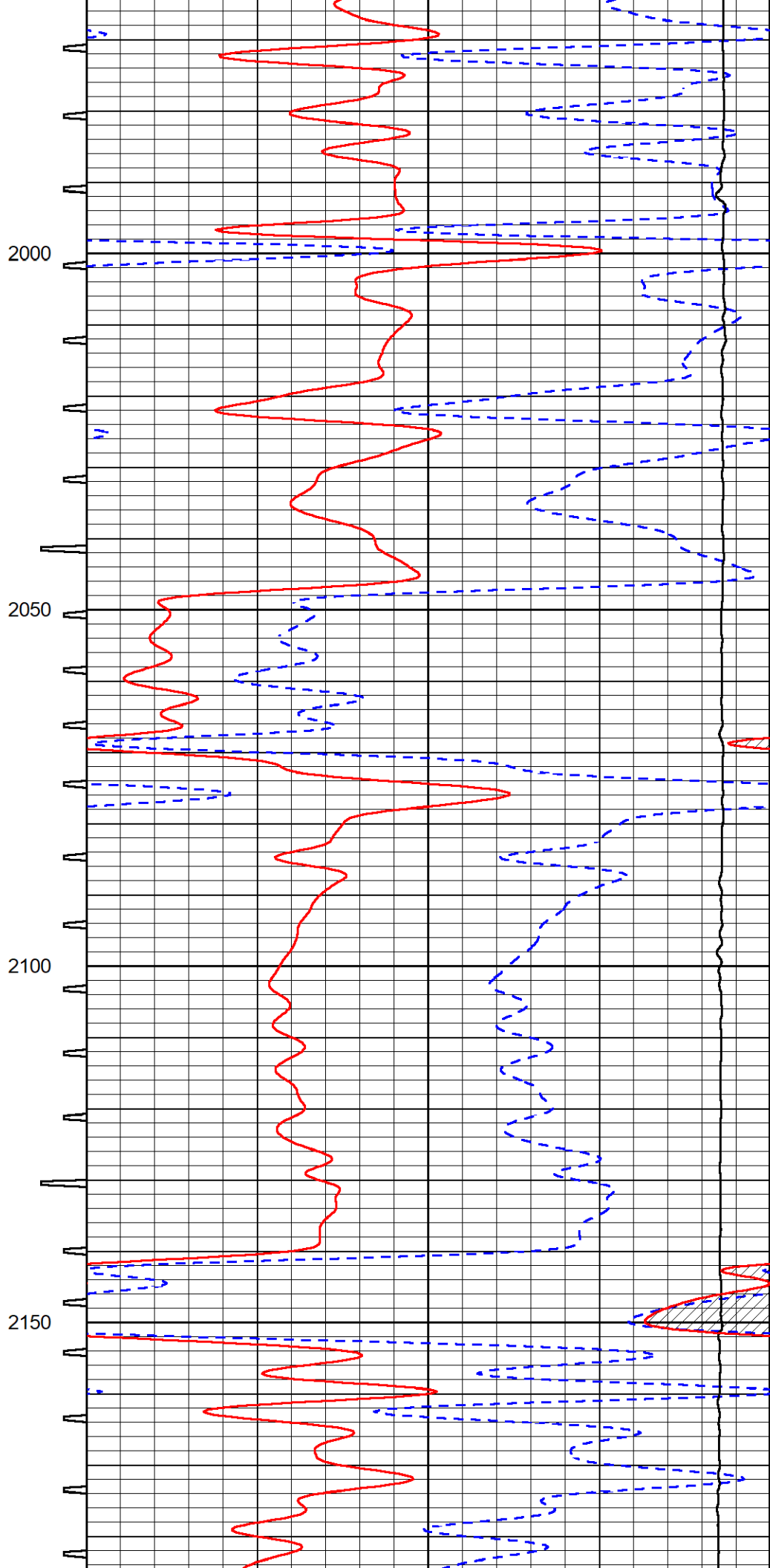
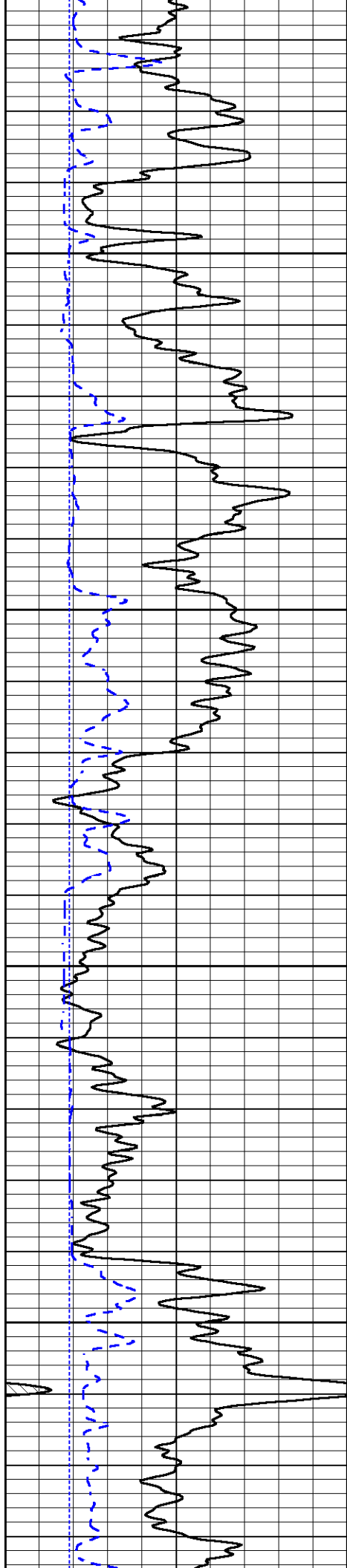
1050

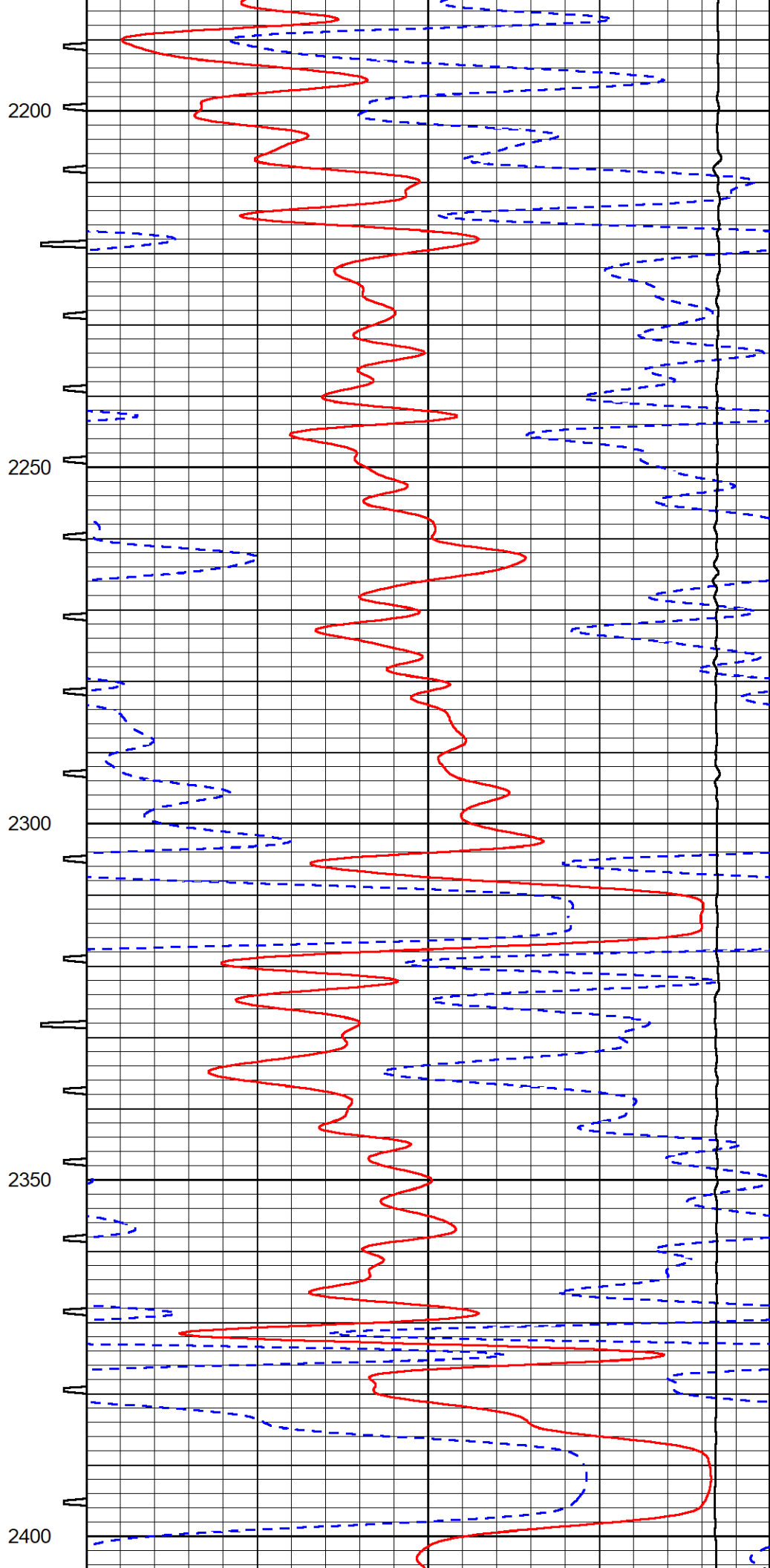
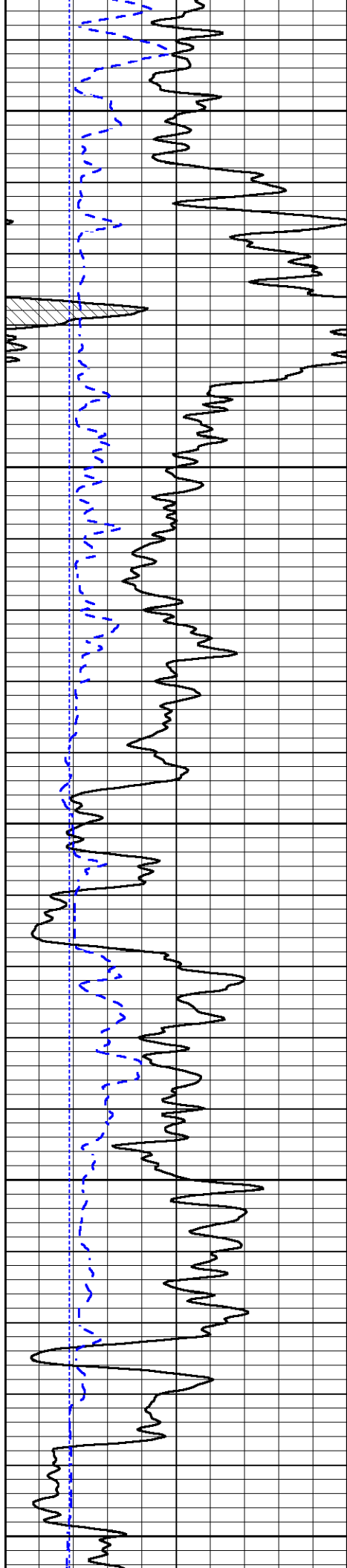


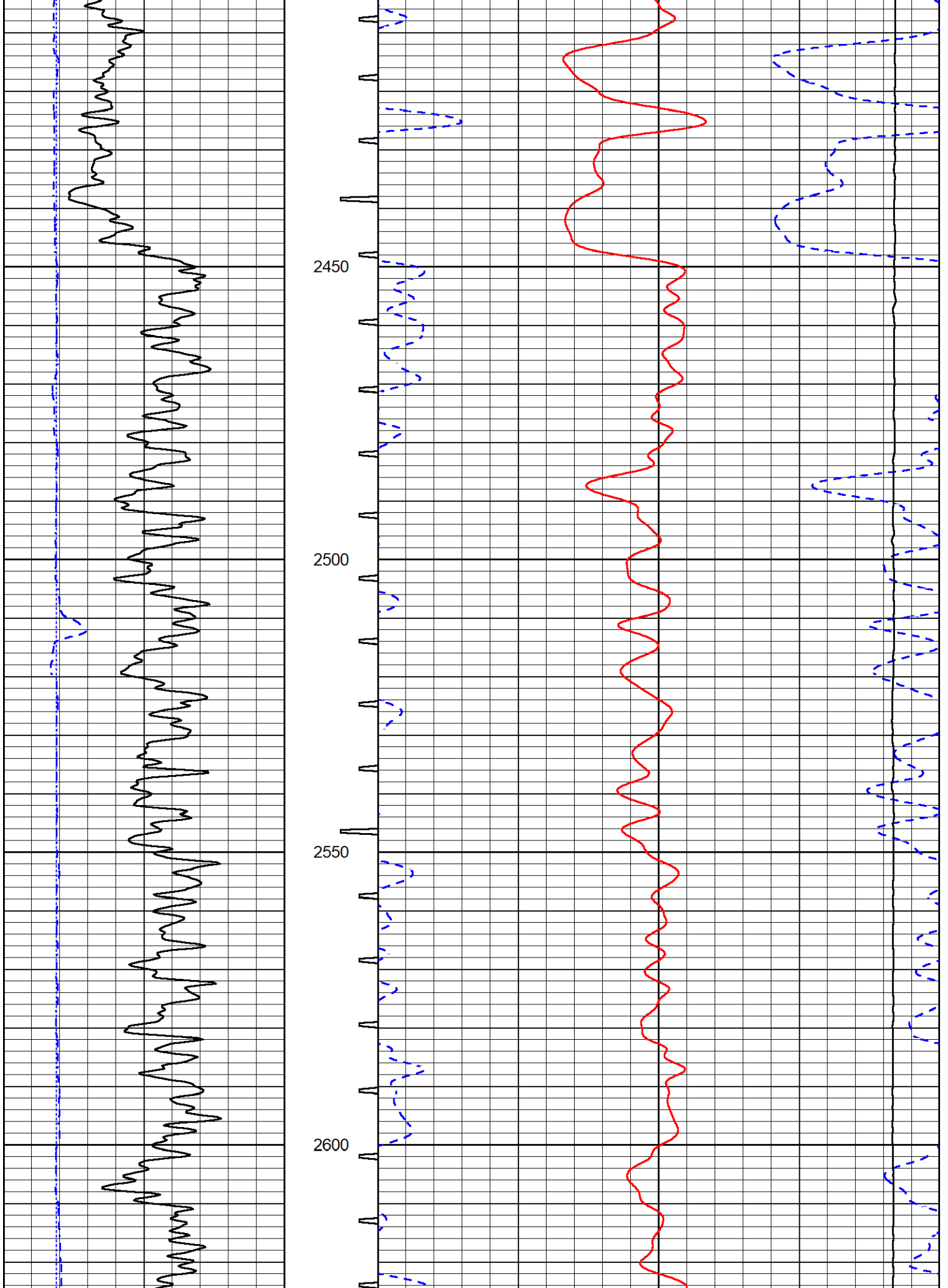


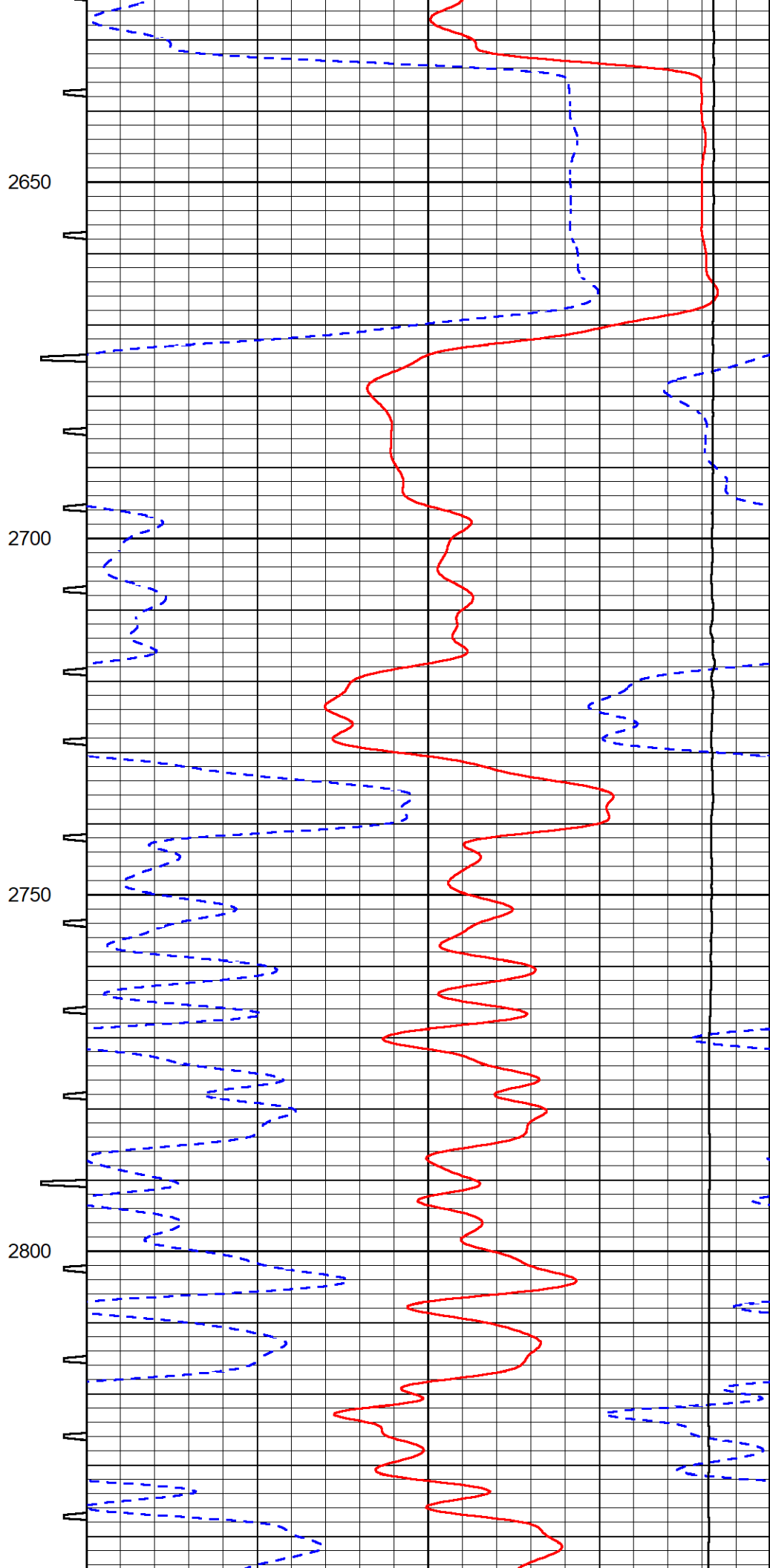
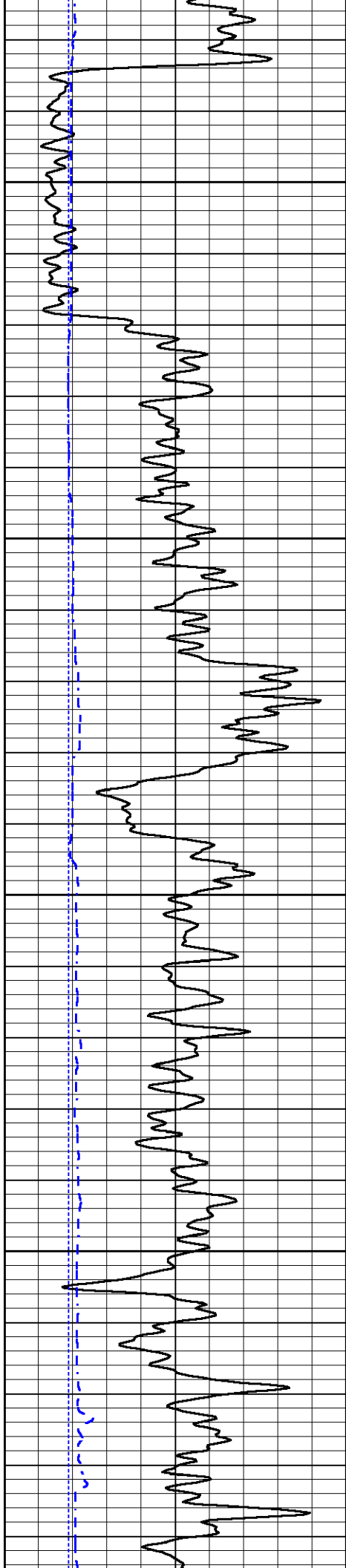


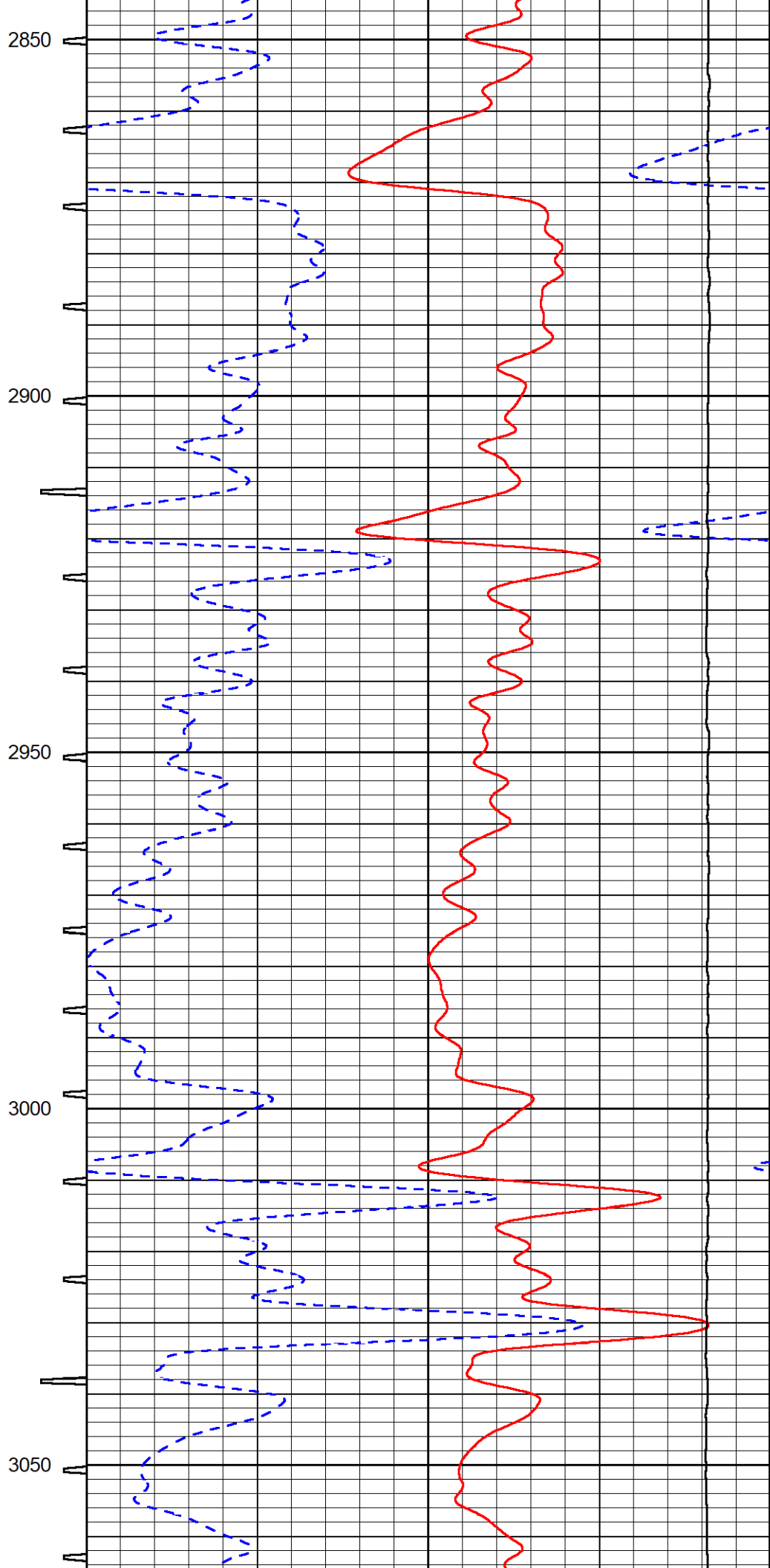
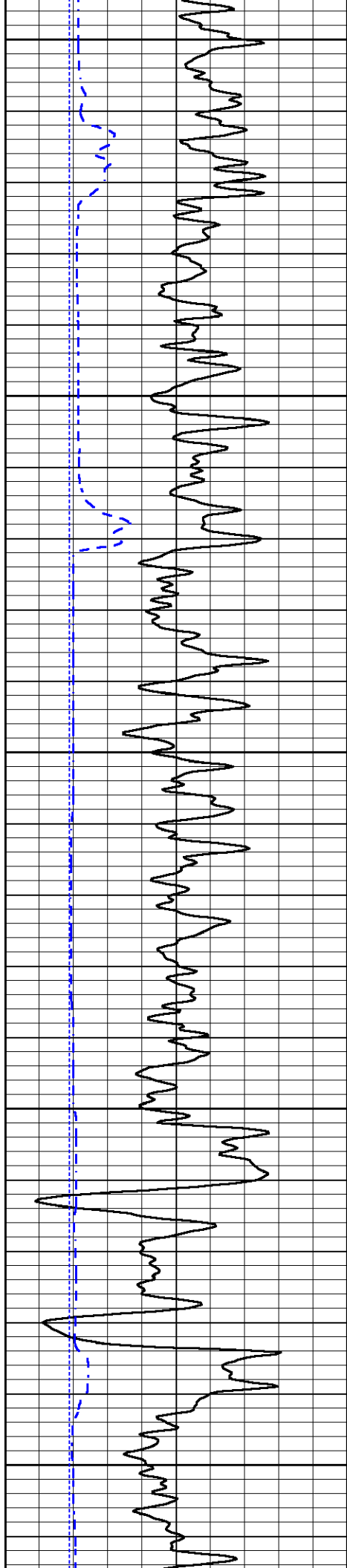


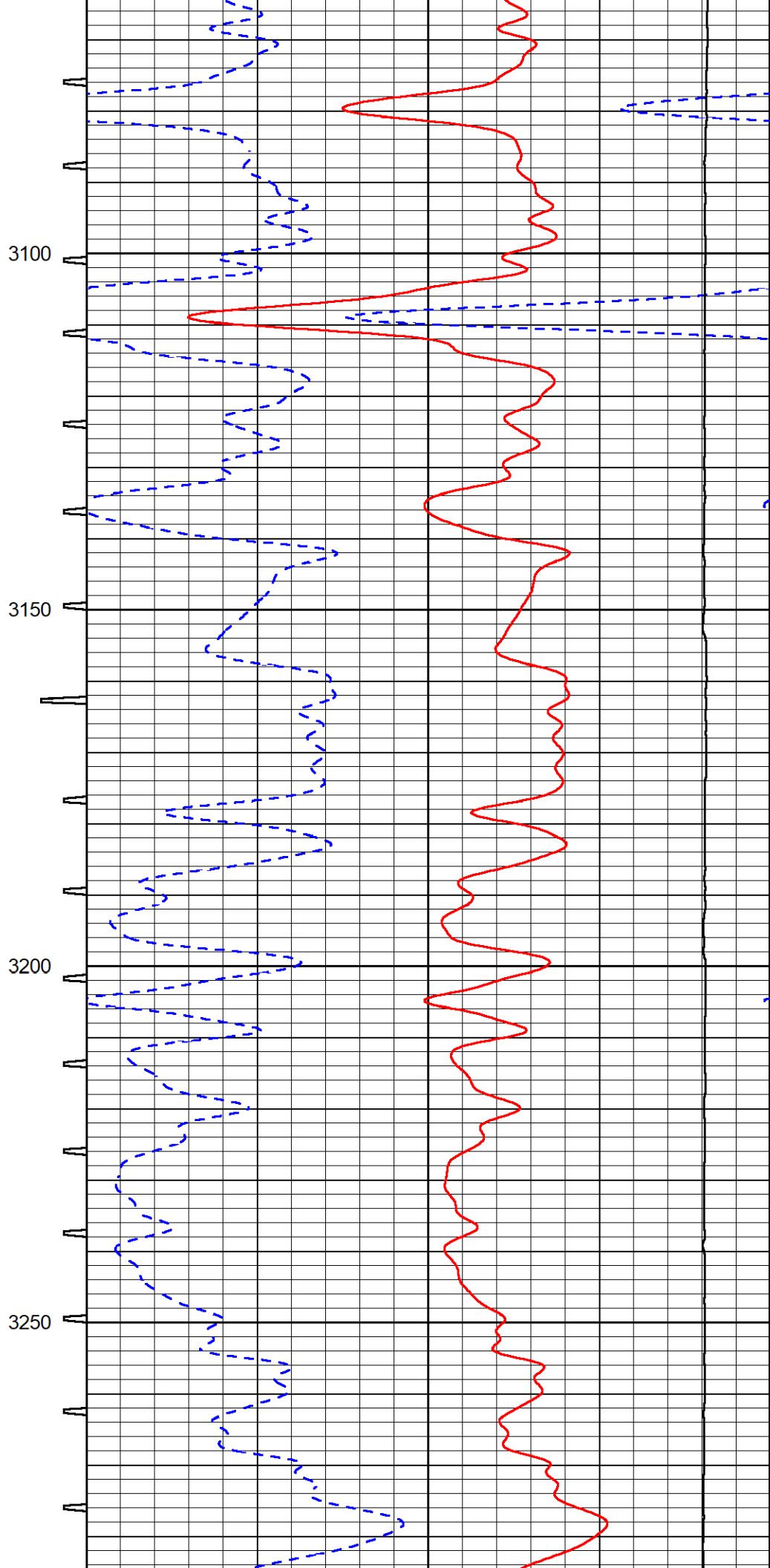
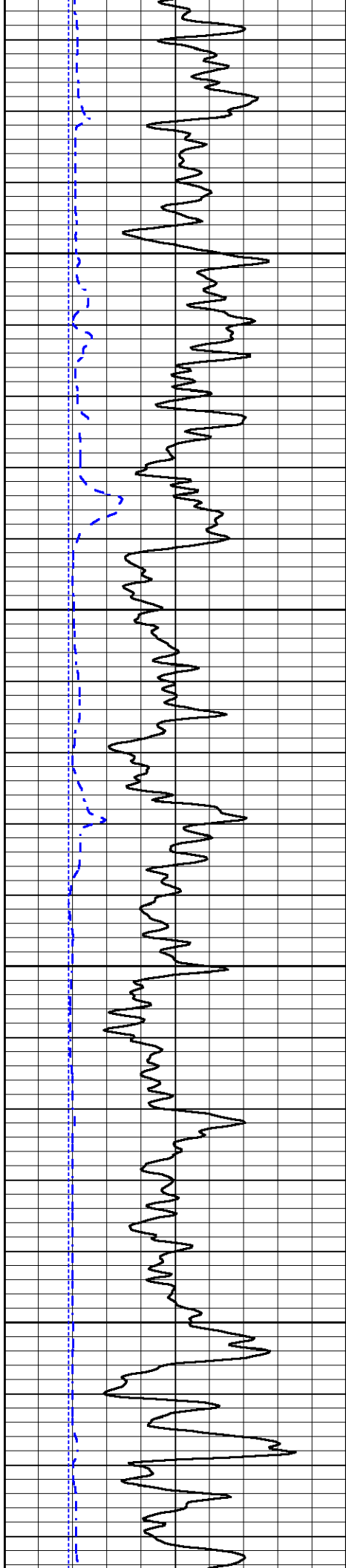


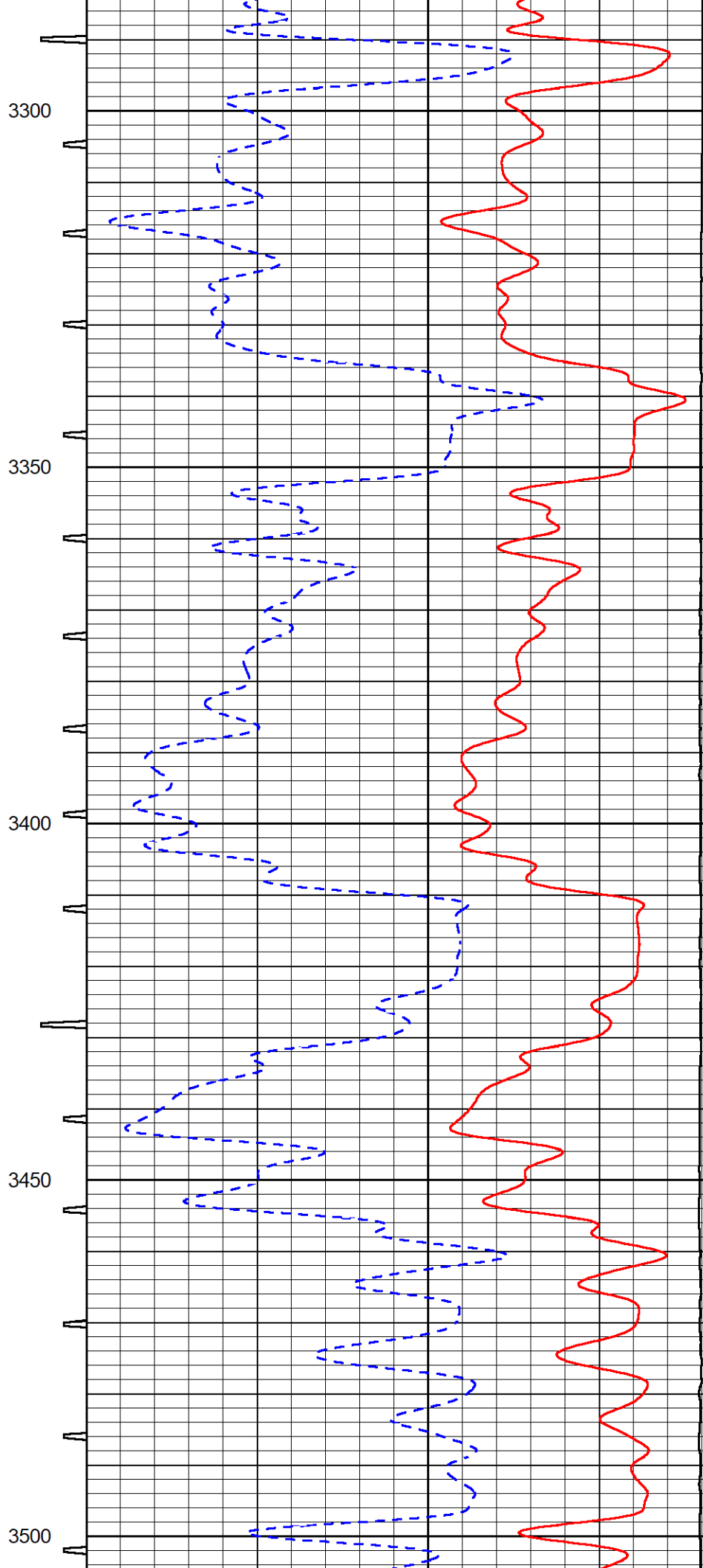
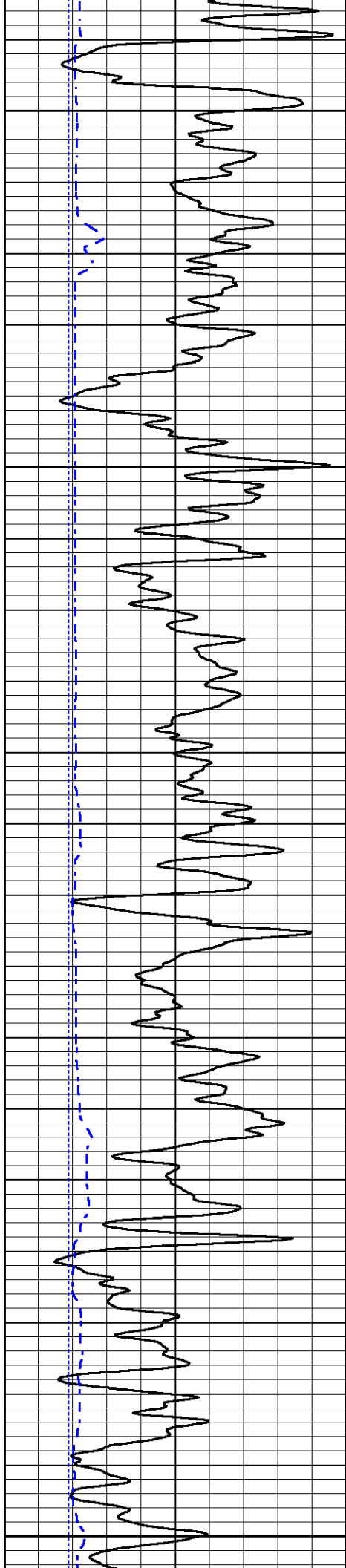


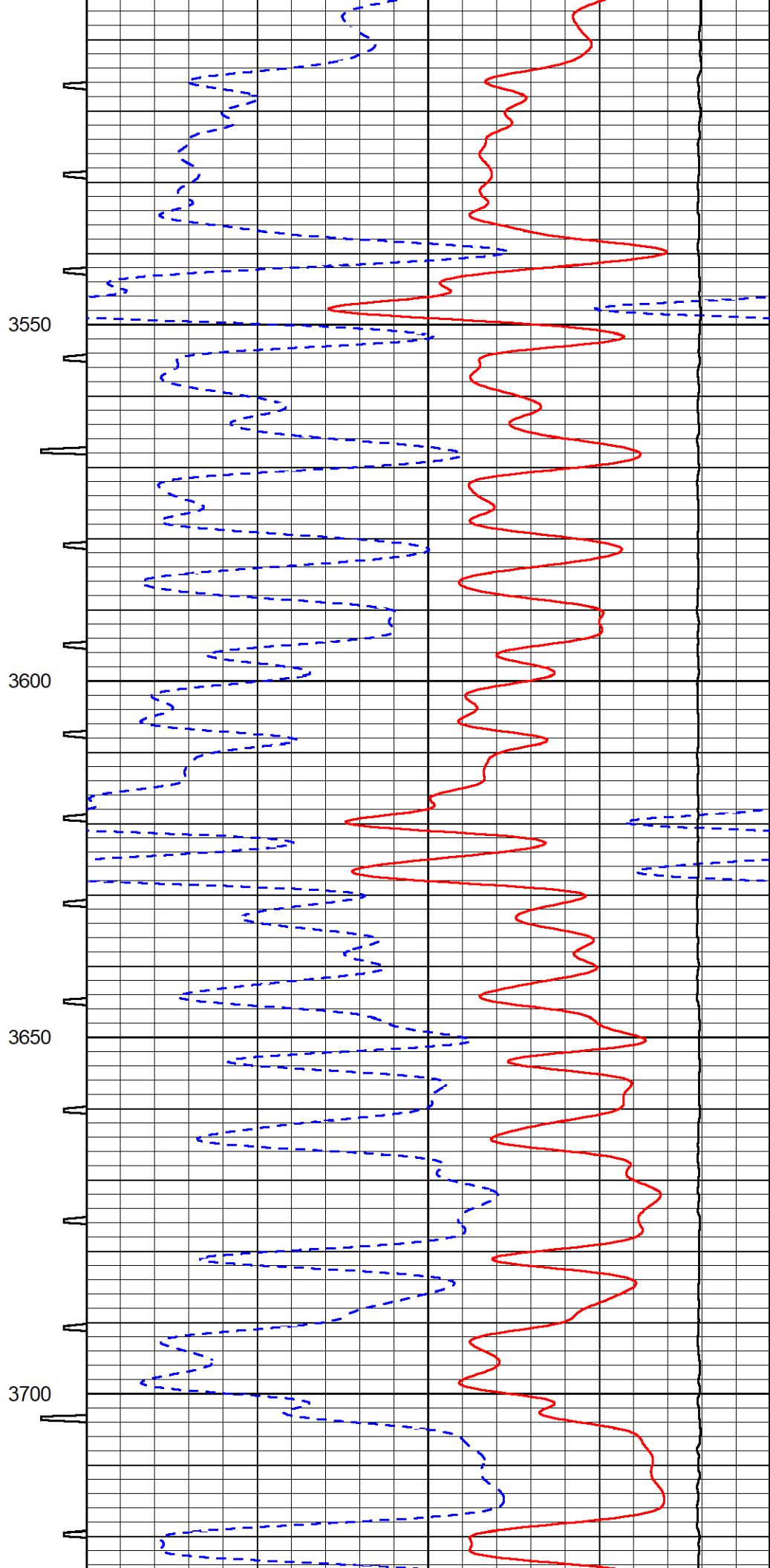
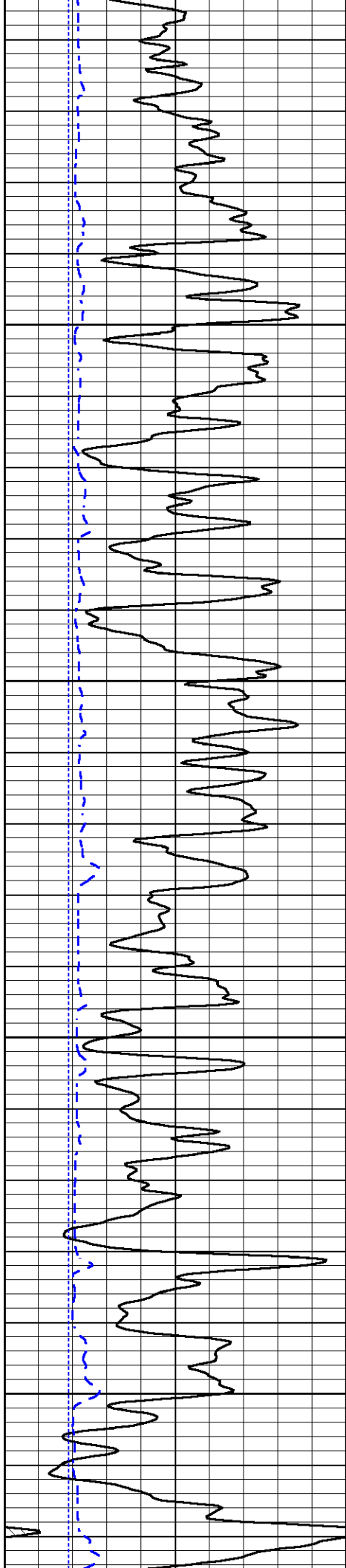


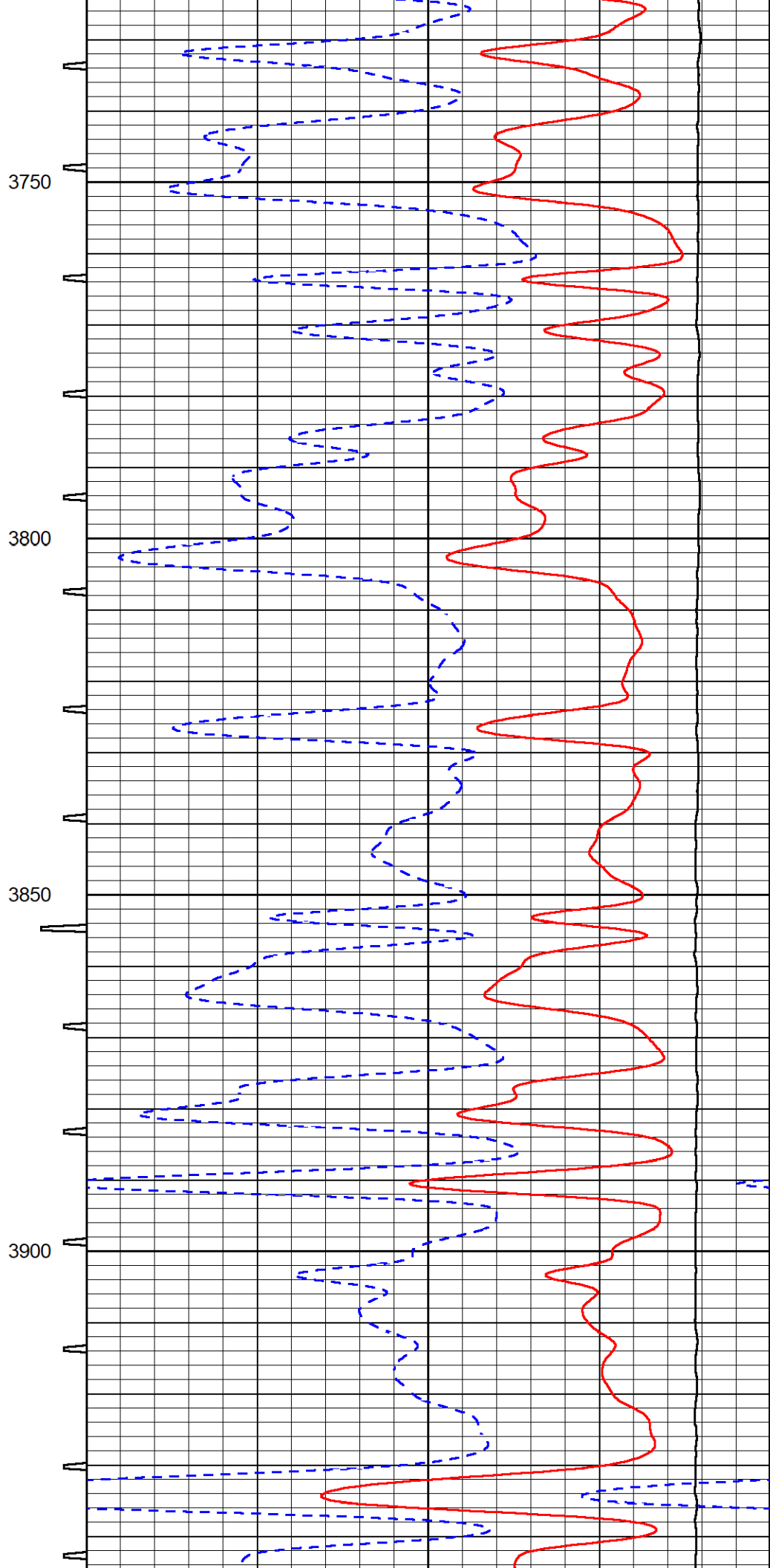
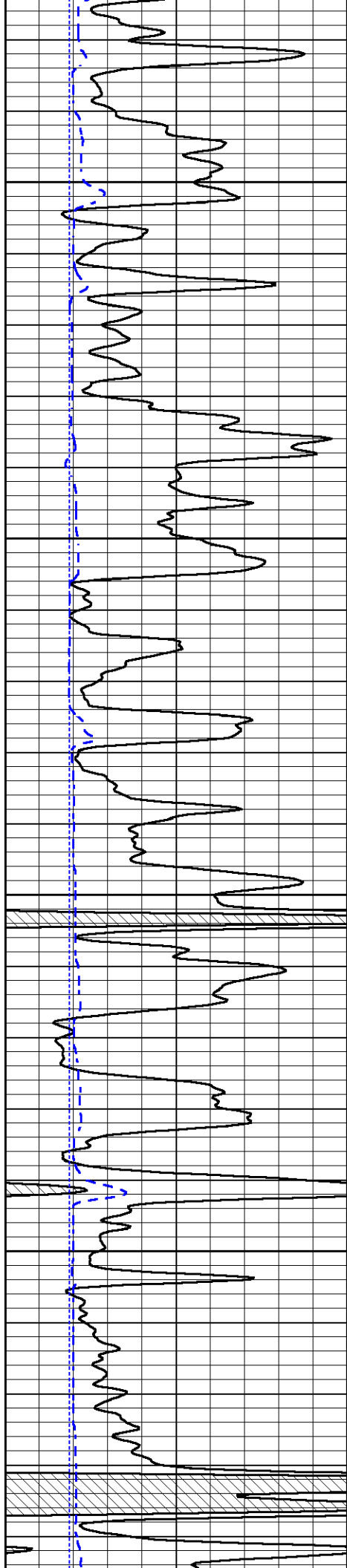


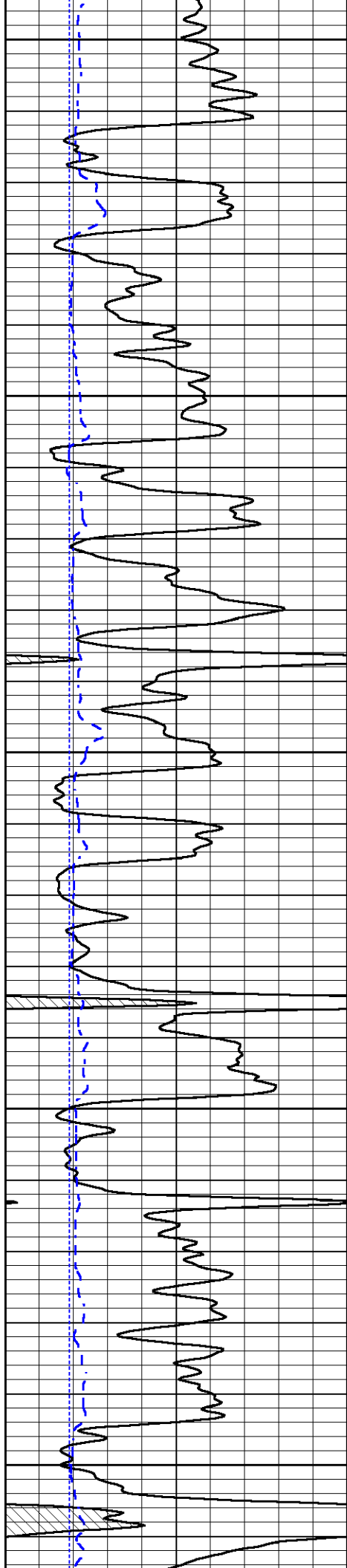












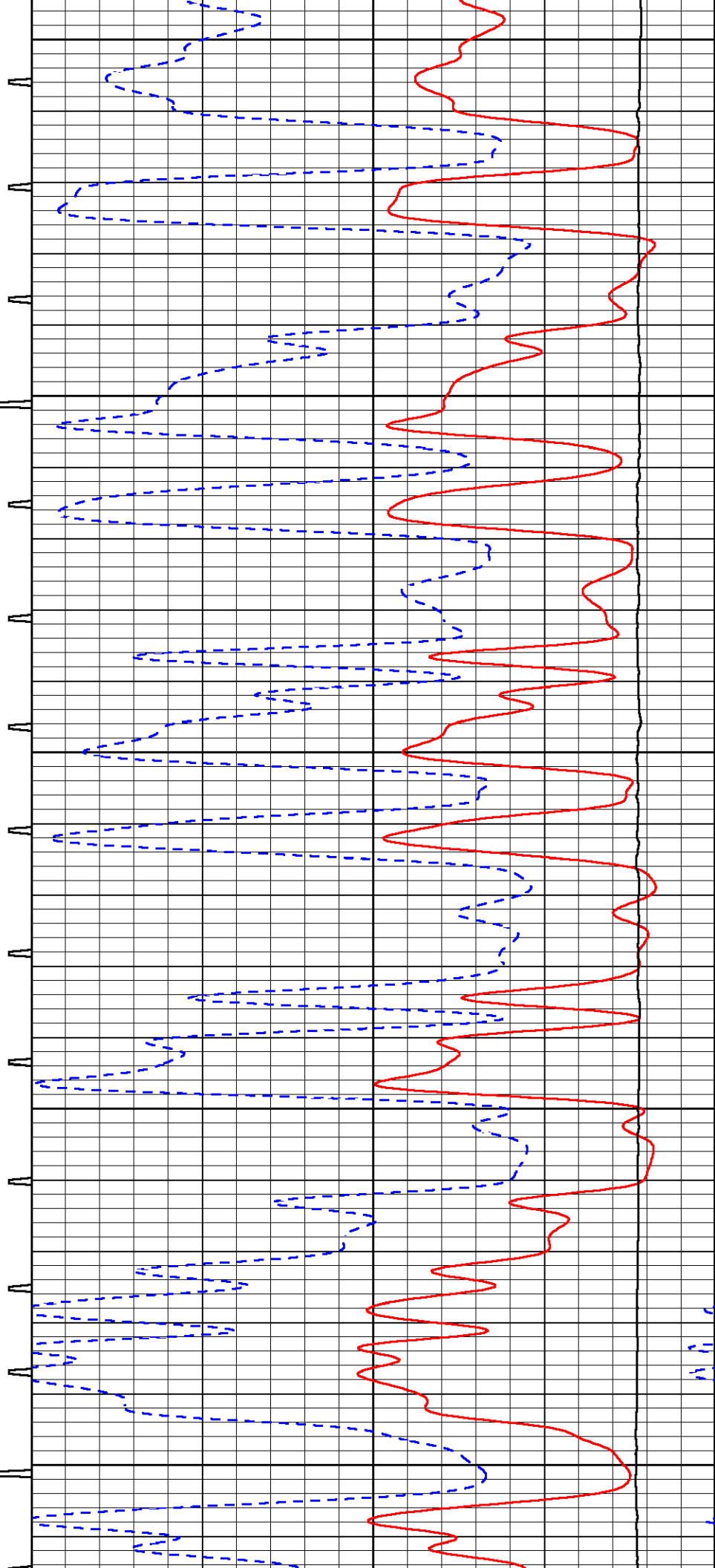
3950

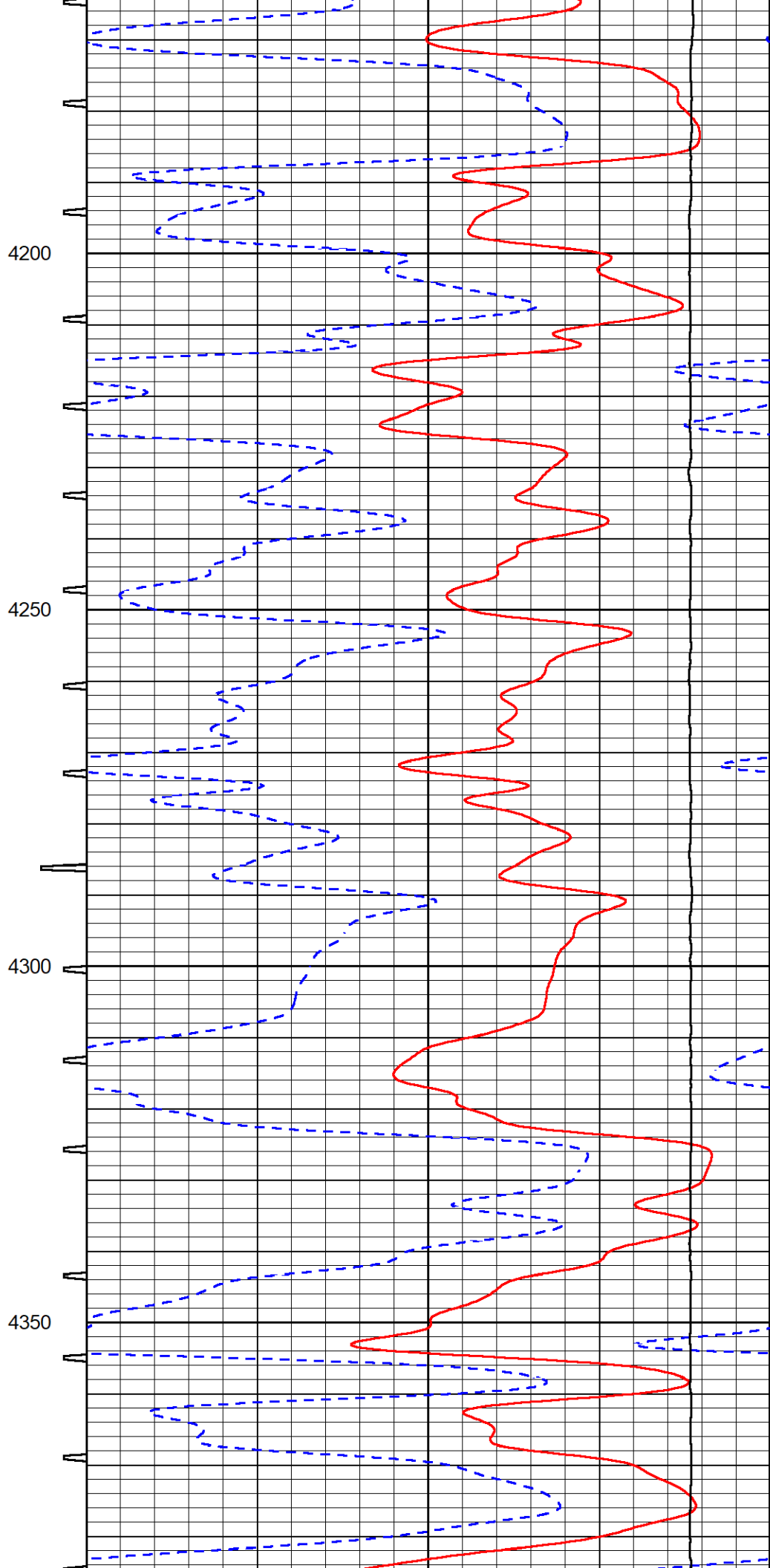
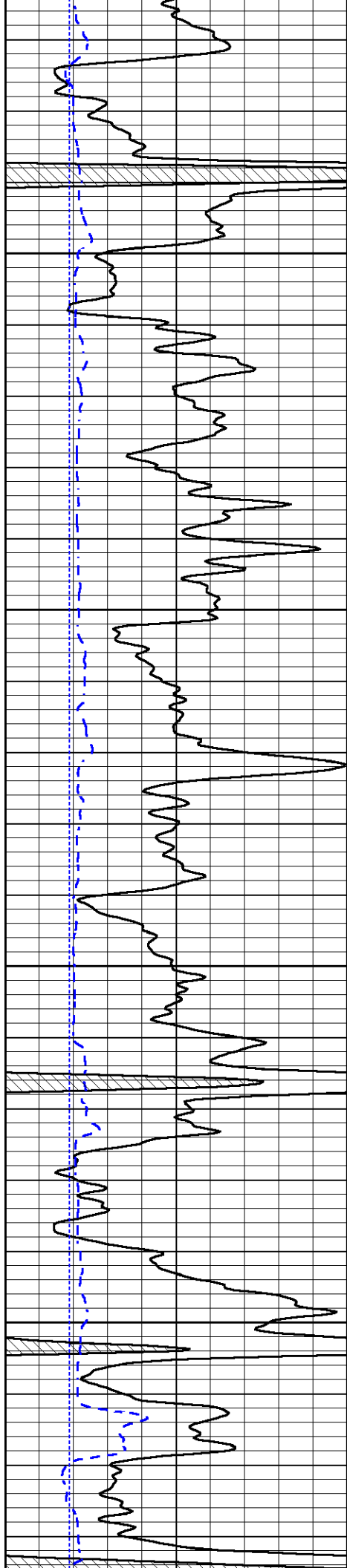
4000

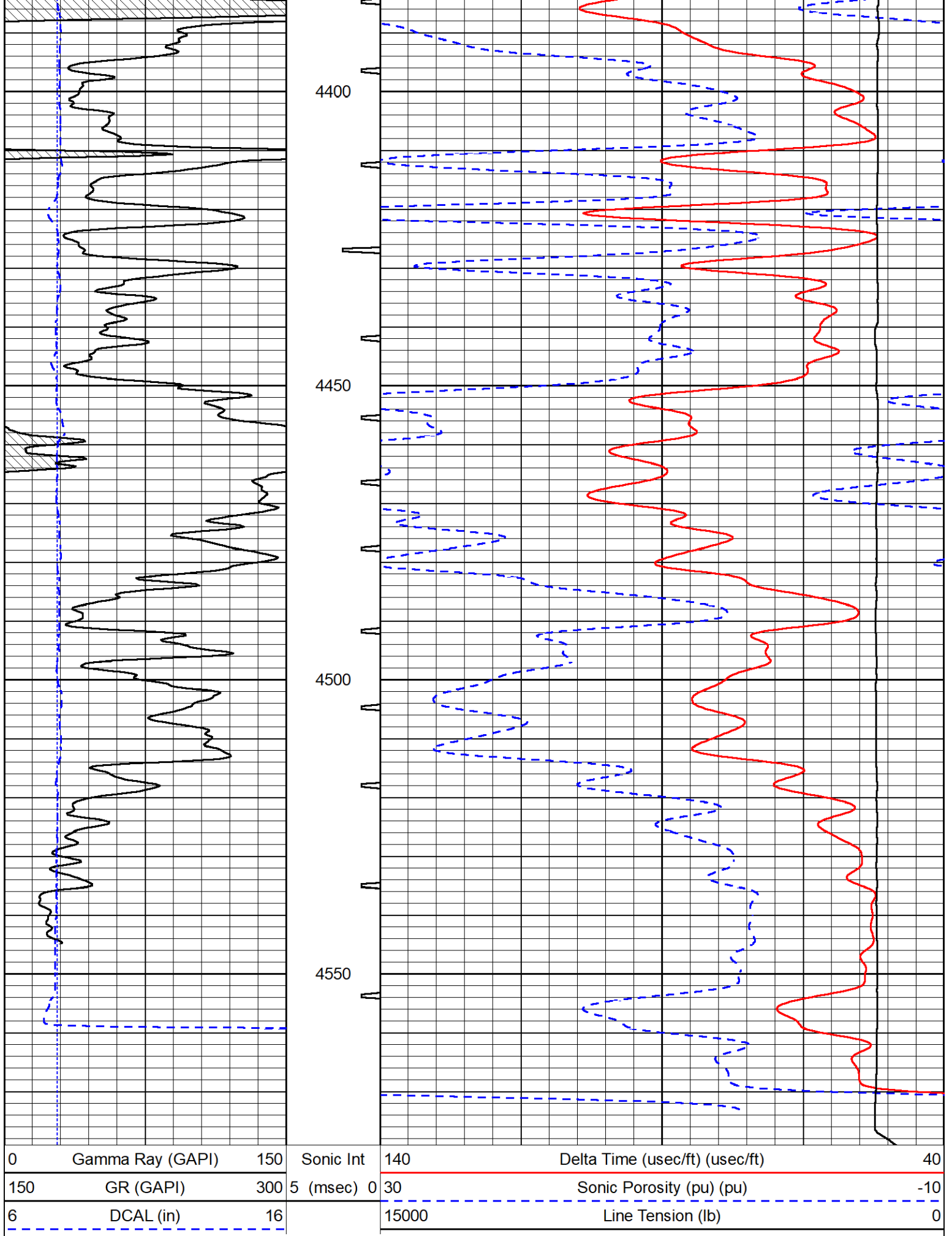
4050

4100

4150







REPEAT SECTION

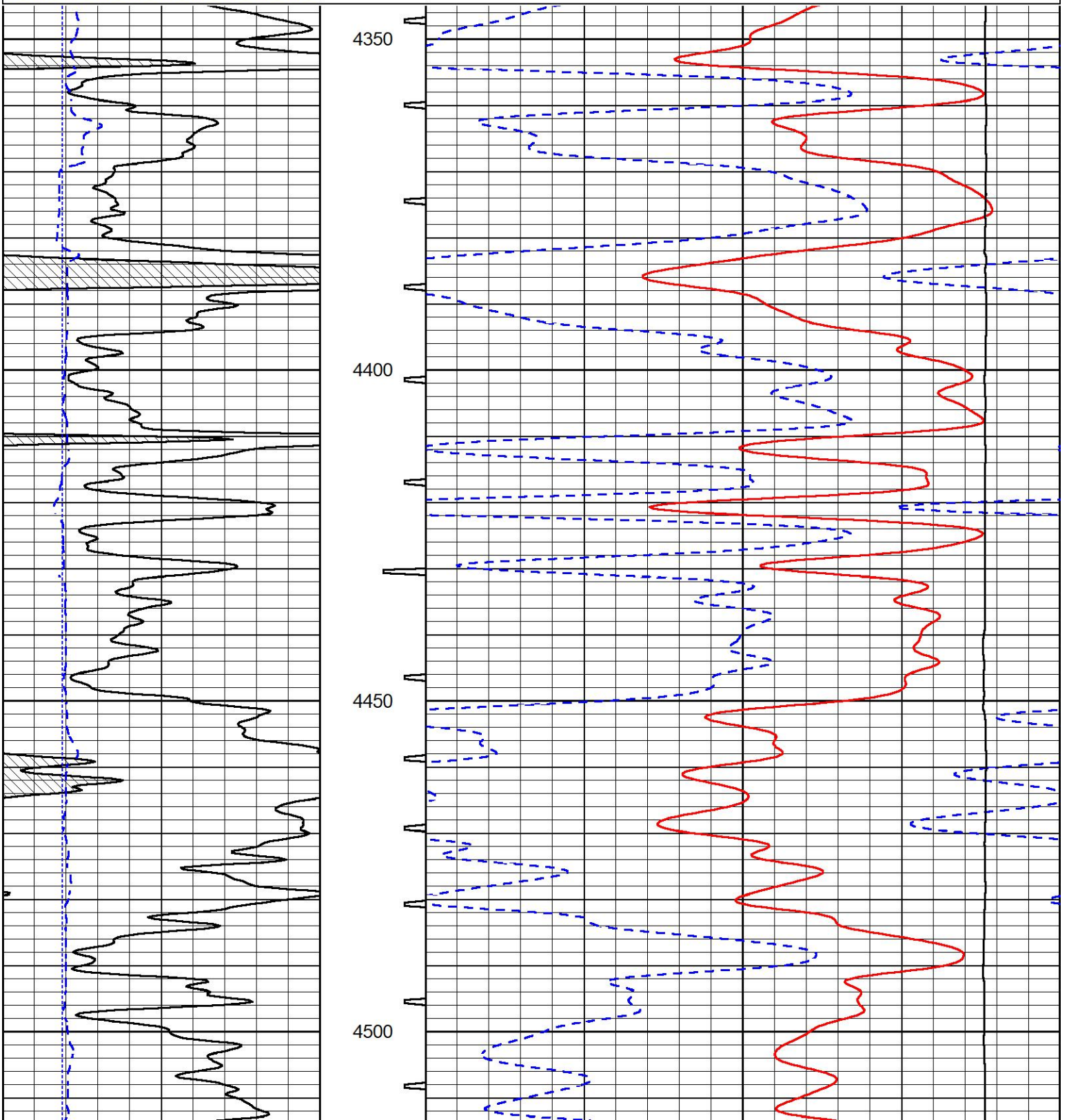


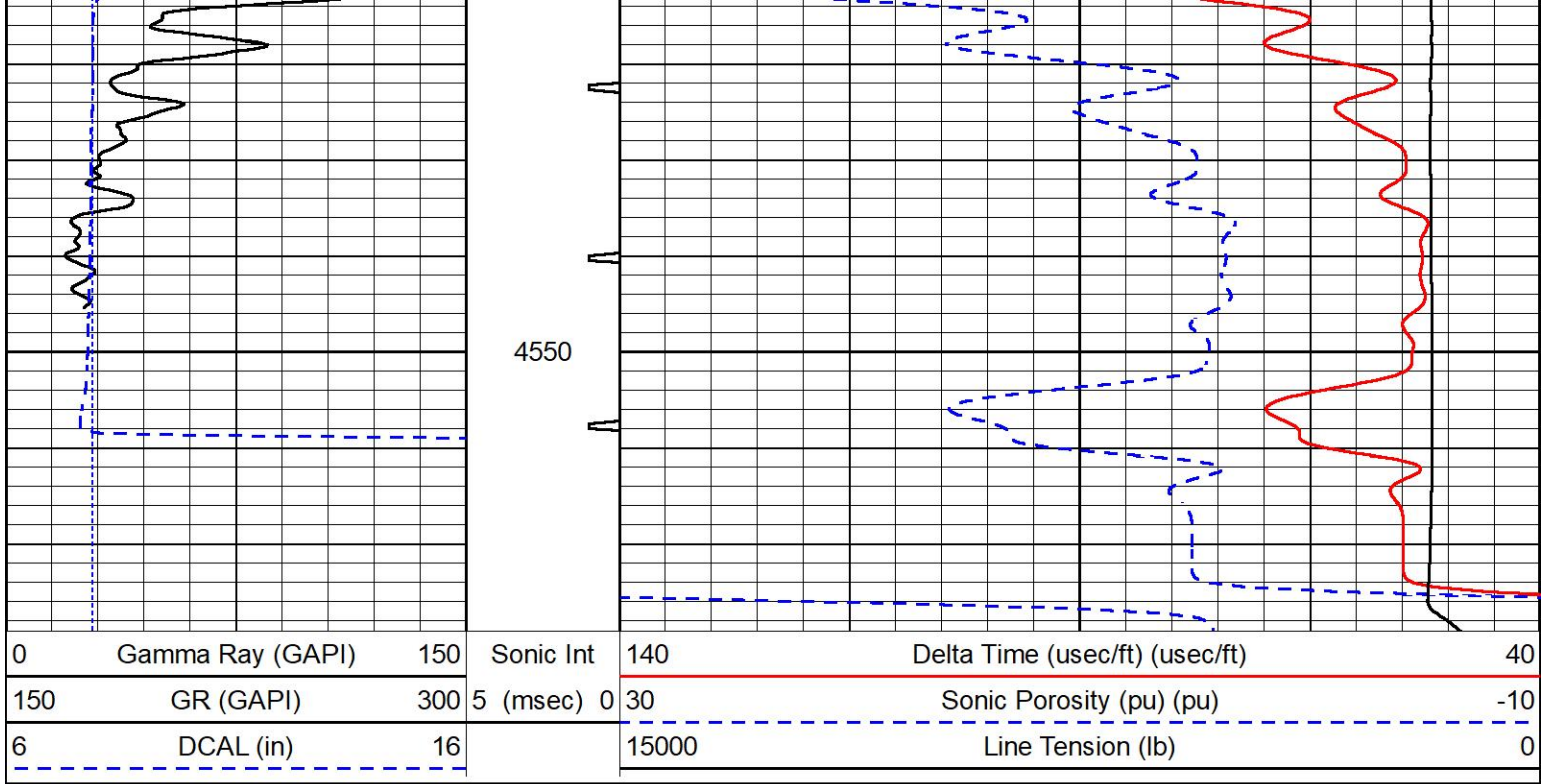
REPEAT SECTION

REPEAT PASS

Database File amwar_mann #1-28.db
 Dataset Pathname Stack/pass2.1
 Presentation Format _sonic
 Dataset Creation Tue May 14 16:39:23 2024
 Charted by Depth in Feet scaled 1:240

0	Gamma Ray (GAPI)	150	Sonic Int	140	Delta Time (usec/ft) (usec/ft)	40
150	GR (GAPI)	300	5 (msec) 0	30	Sonic Porosity (pu) (pu)	-10
6	DCAL (in)	16		15000	Line Tension (lb)	0





Company American Warrior, Inc.
 Well Mann #1-28
 Field Unnamed
 County Thomas
 State Kansas