

SONIC LOG

Company DARRAH OIL COMPANY, LLC.
 Well OTTLEY #3-12
 Field CHALK BUTTES
 County LOGAN State KANSAS

Location: API #: 15-109-21634-0000
 335' FSL & 1815' FWL
 NE - SW - SE - SW
 SEC 12 TWP 14S RGE 32W
 Permanent Datum GROUND LEVEL Elevation 2849
 Log Measured From KELLY BUSHING 9' A.G.L.
 Drilling Measured From KELLY BUSHING
 Other Services CDL/CNL/PE DIL/MEI
 Elevation K.B. 2858
 D.F. 2856
 G.L. 2849

Date	7/7/22
Run Number	TWO
Depth Driller	4625
Depth Logger	4618
Bottom Logged Interval	4610
Top Log Interval	200
Casing Driller	8 5/8"@217'
Casing Logger	217
Bit Size	7 7/8"
Type Fluid in Hole	CHEMICAL MUD
Density / Viscosity	9.5/59
pH / Fluid Loss	9.5/9.6
Source of Sample	FLOWLINE
Rm @ Meas. Temp	1.00@82F
Rmf @ Meas. Temp	.750@82F
Rmc @ Meas. Temp	1.20@82F
Source of Rmf / Rmc	MEASURED
Rm @ BHT	.672@122F
Time Circulation Stopped	4 HOURS
Time Logger on Bottom	10:15 A.M.
Maximum Recorded Temperature	122F
Equipment Number	8916
Location	HAYS, KANSAS
Recorded By	JEFF LUEBBERS
Witnessed By	MACKLIN ARMSTRONG

<<< Fold Here >>>

All interpretations are opinions based on inferences from electrical or other measurements and we cannot and do not guarantee the accuracy or correctness of any interpretation, and we shall not, except in the case of gross or willful negligence on our part, be liable or responsible for any loss, costs, damages, or expenses incurred or sustained by anyone resulting from any interpretation made by any of our officers, agents or employees. These interpretations are also subject to our general terms and conditions set out in our current Price Schedule.

Comments

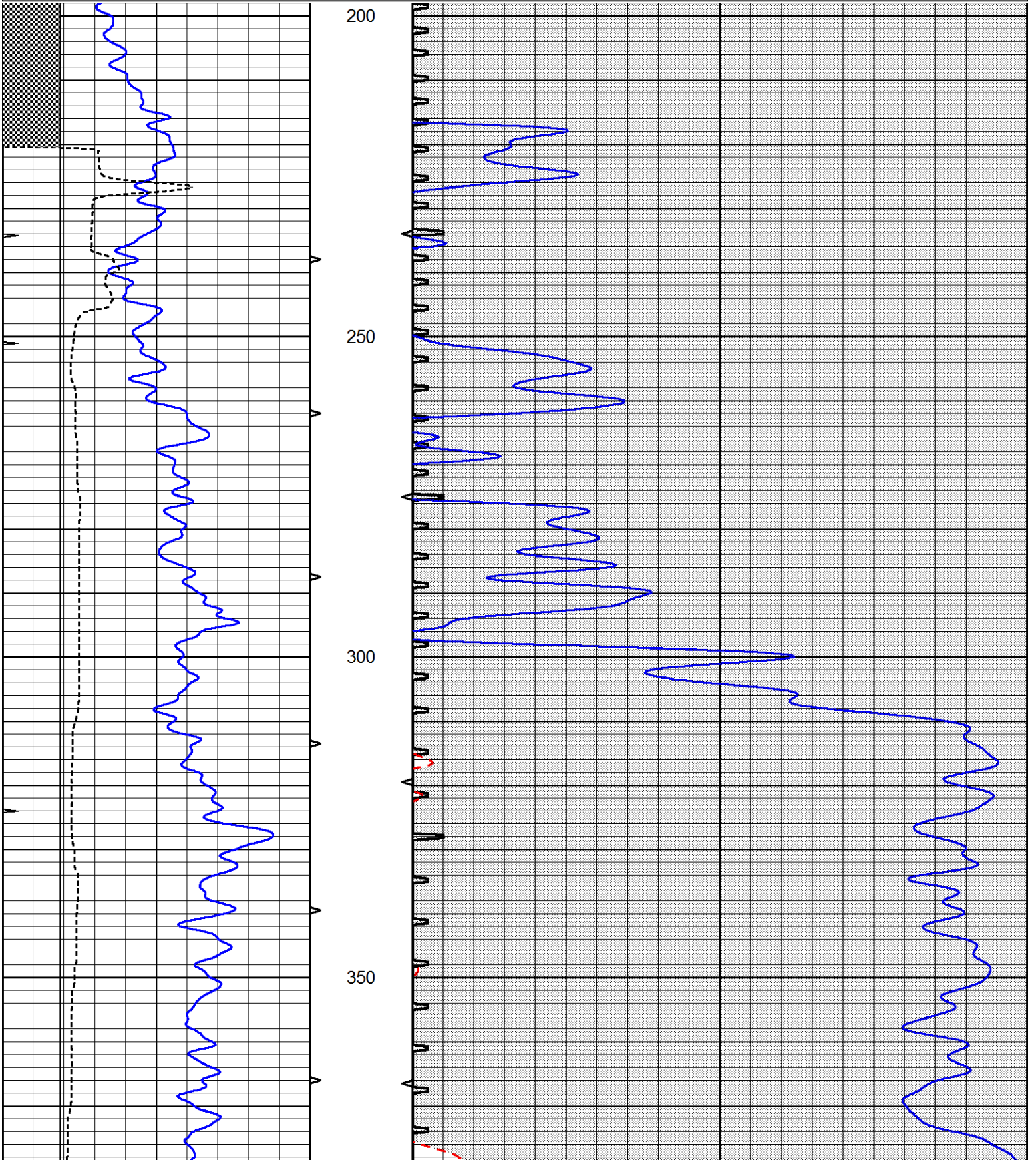
THANK YOU FOR USING ELI WIRELINE, HAYS, KS. (785) 628-6395
 DIRECTIONS:
 OAKLEY, KS., 20S. ON HWY 83 TO "JAYHAWK RD.", 1E., 1N., E. INTO

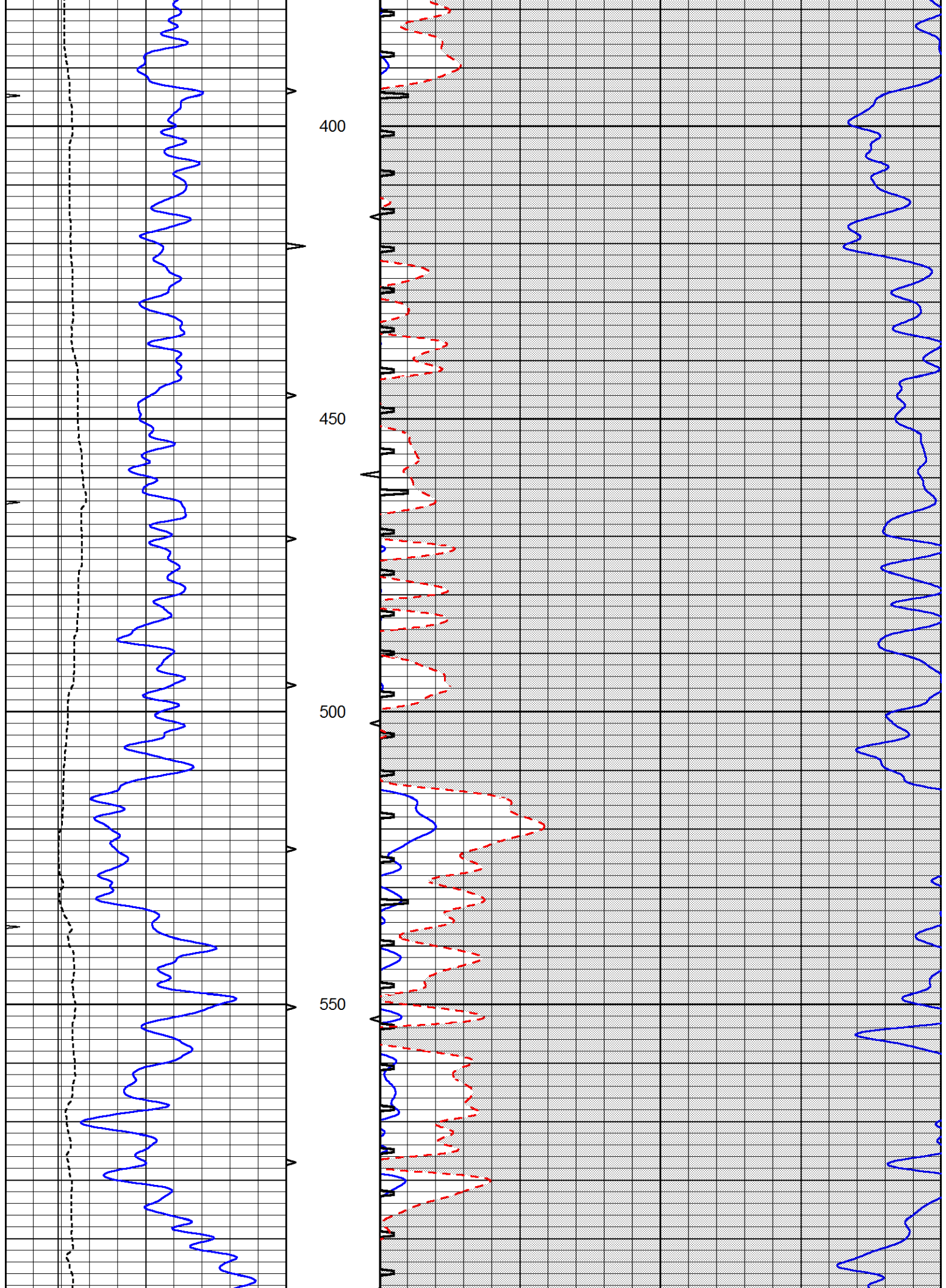


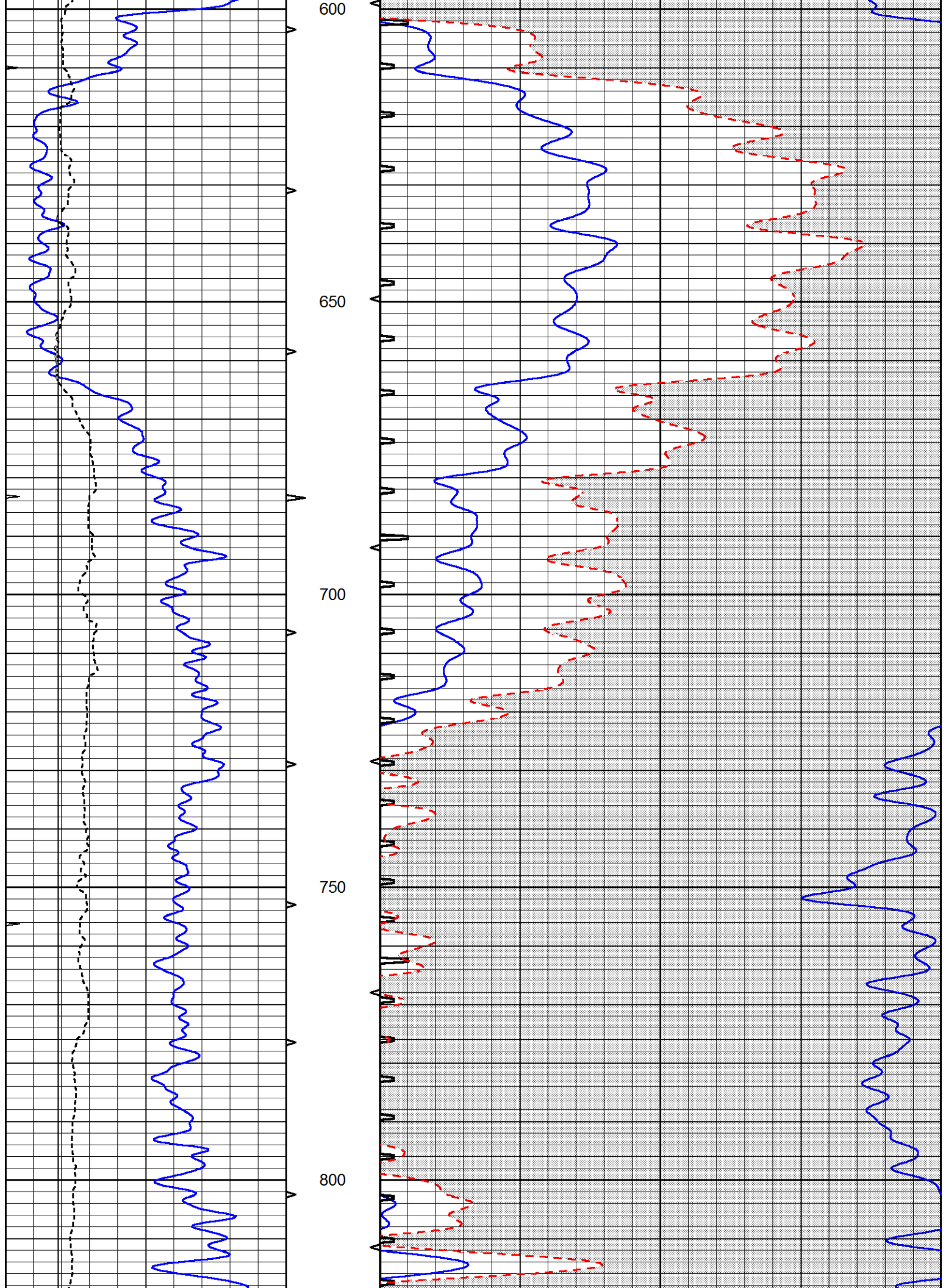
MAIN SECTION

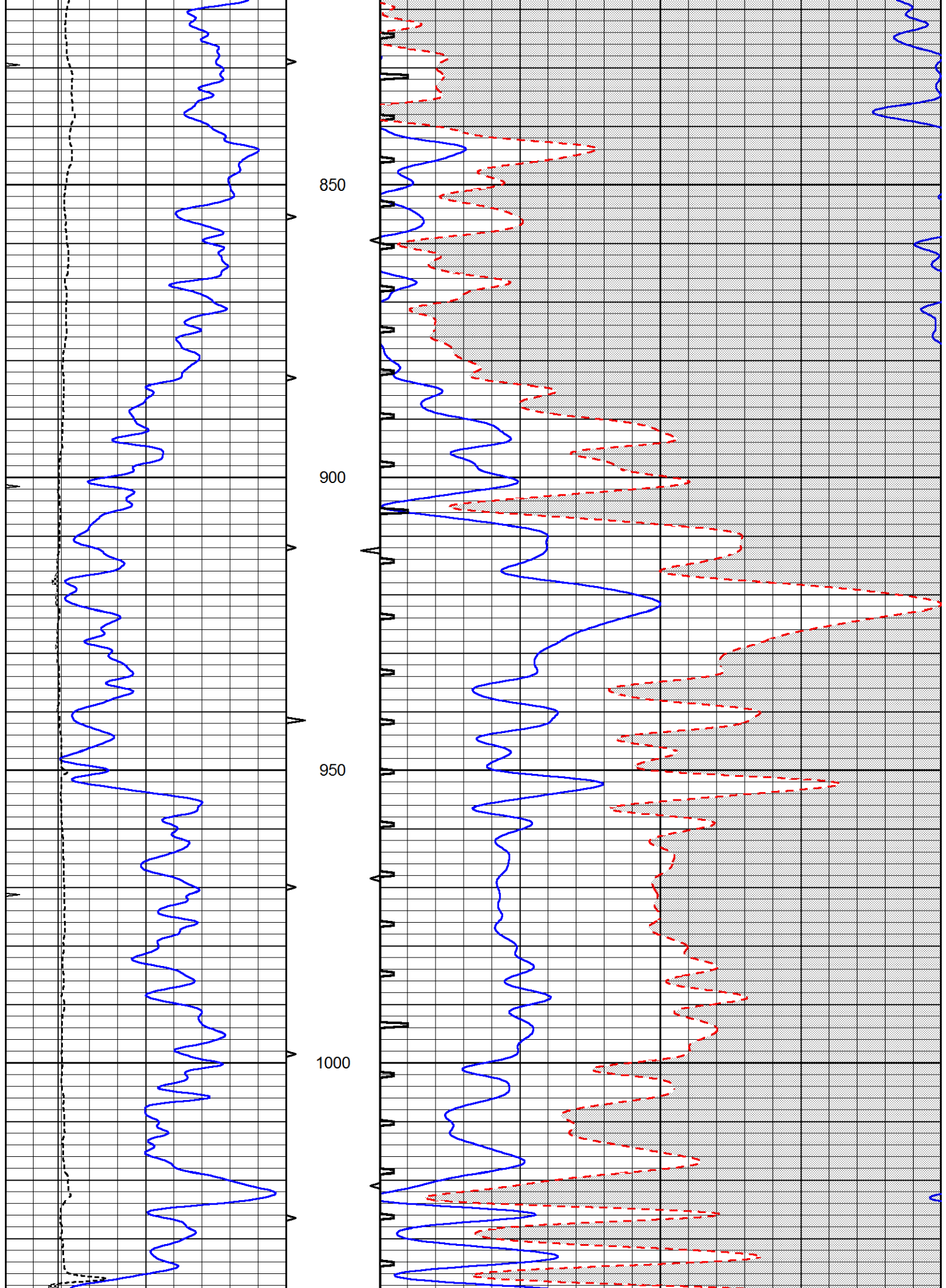
Database File 6707pe.db
 Dataset Pathname pass6.4
 Presentation Format _slt
 Dataset Creation Thu Jul 07 11:50:51 2022
 Charted by Depth in Feet scaled 1:240

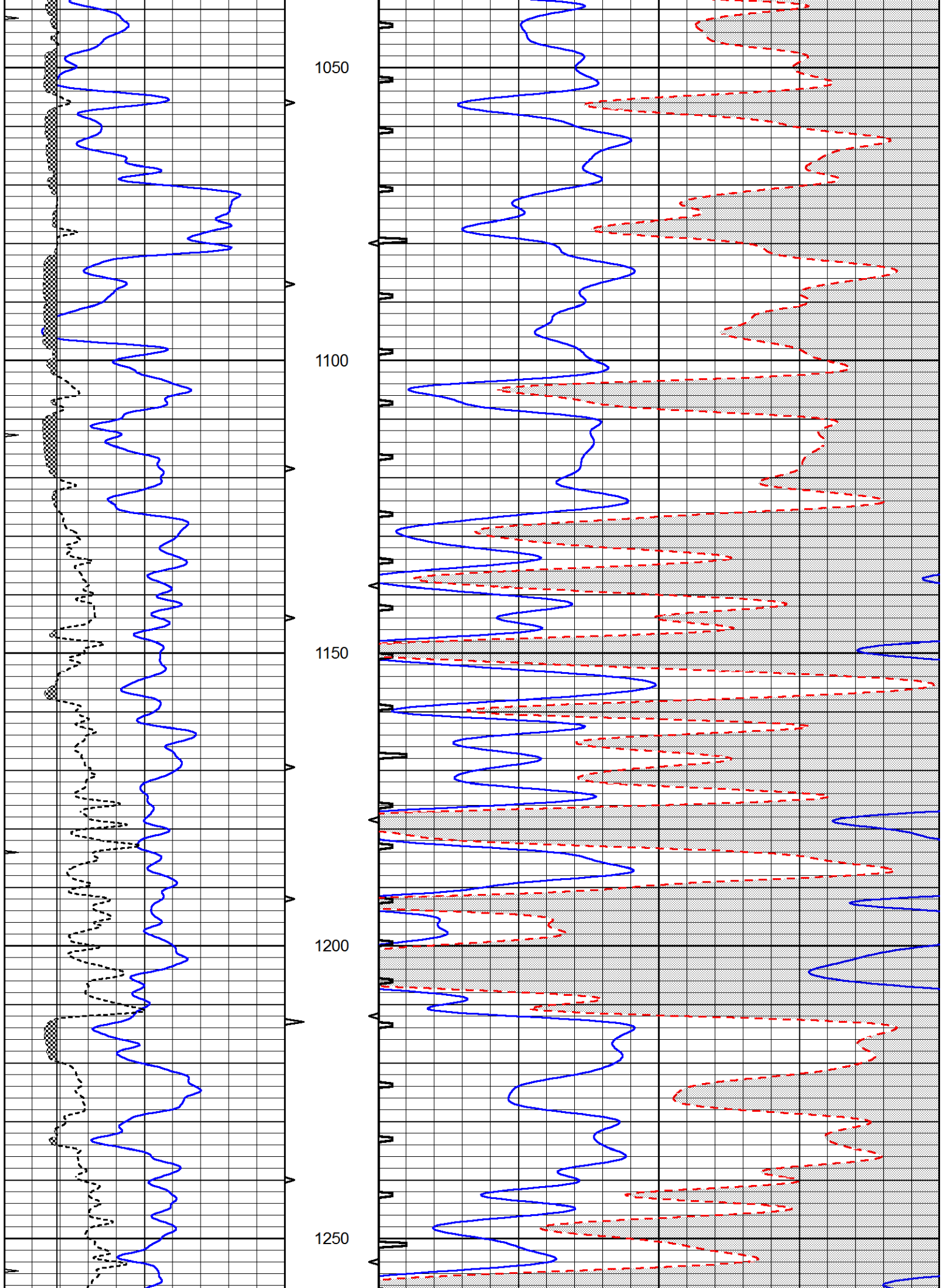
0	GAMMA RAY (GAPI)	150	ABHV	140	DELTA TIME (usec/ft)	40
0	MINMK	20	10 (ft3) 0	30	SONIC POROSITY (pu)	-10
6	MELCAL (in)	16	TBHV	0	ITT (msec)	20
			0 (ft3) 10			

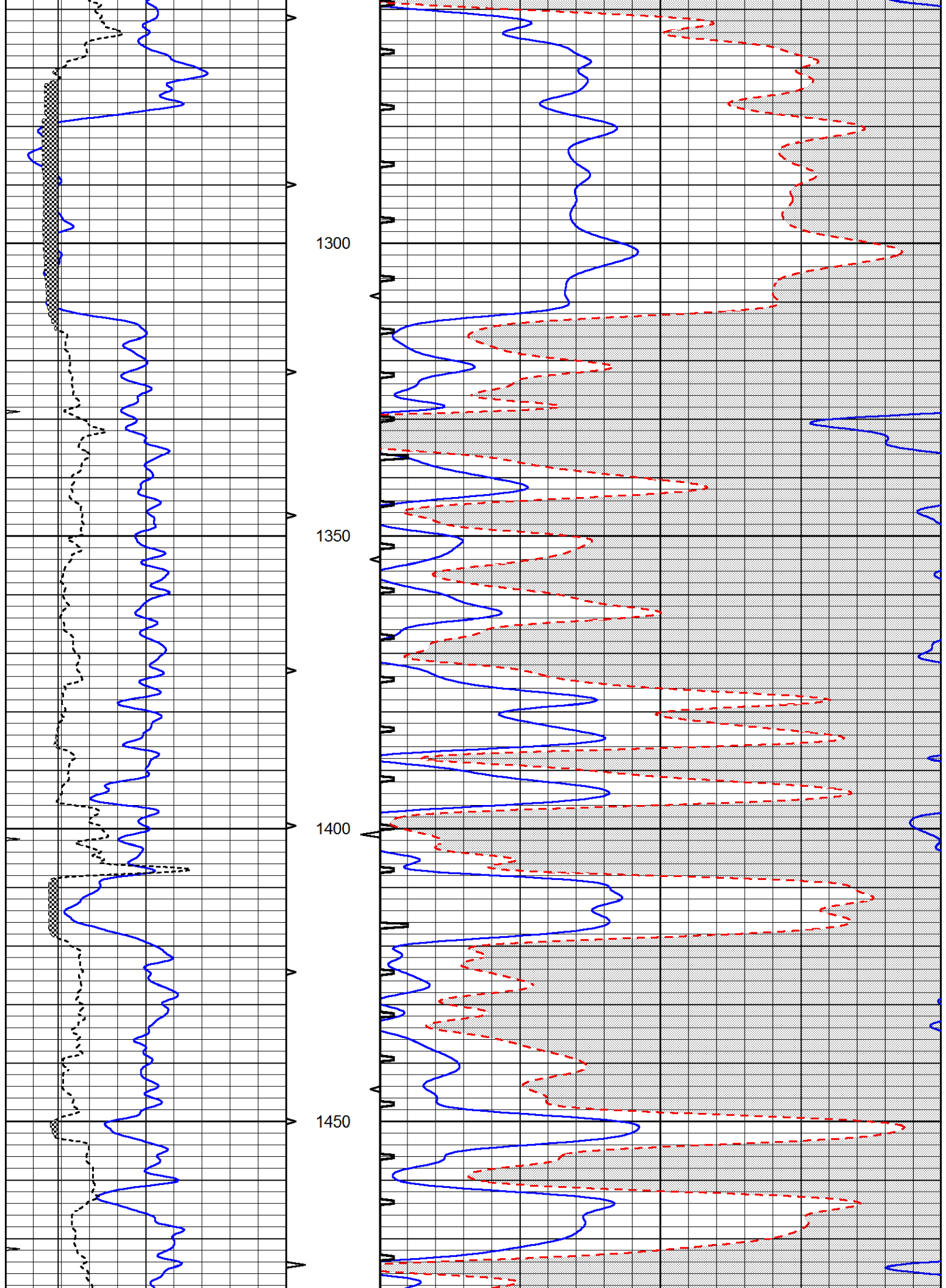


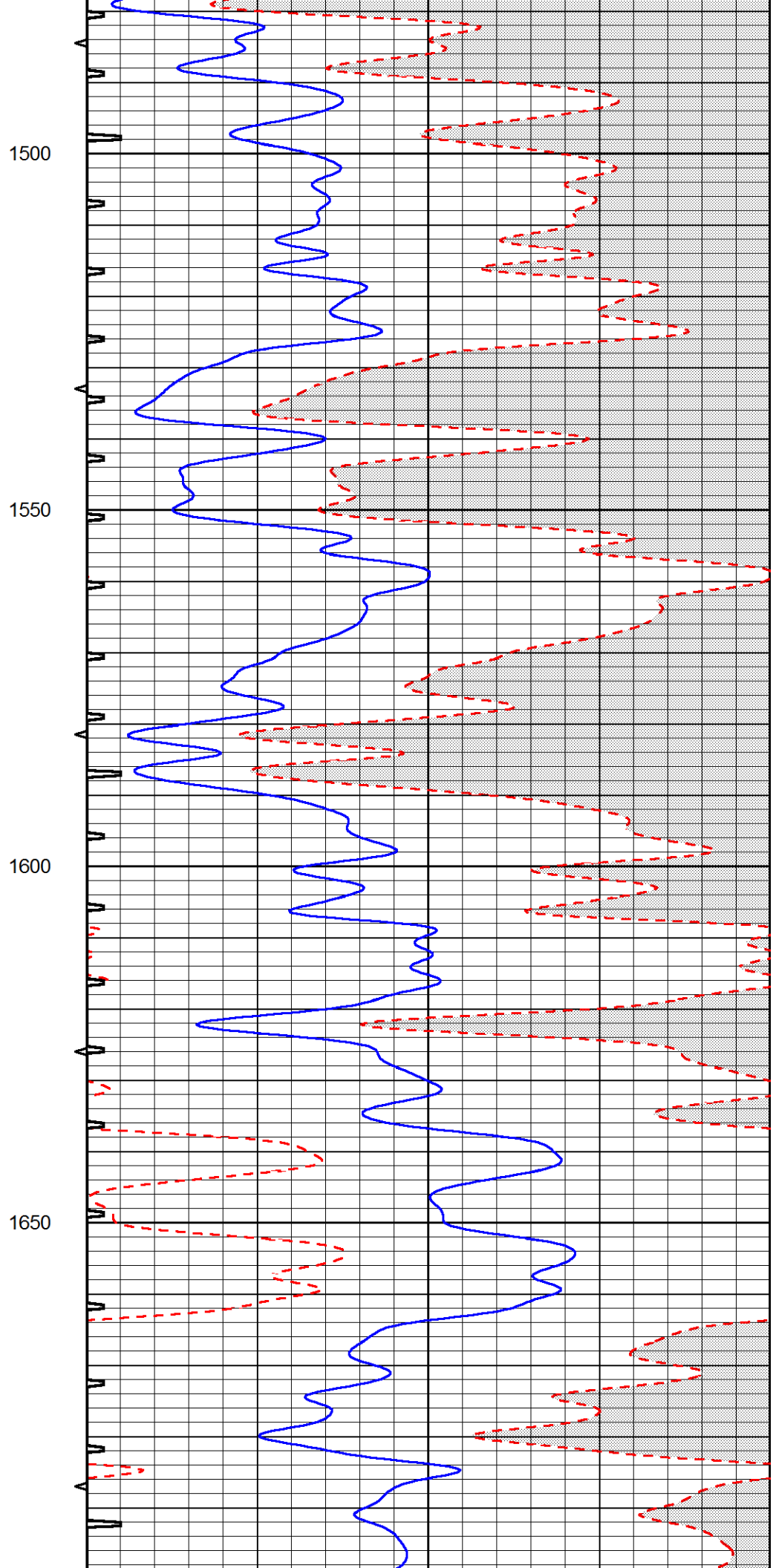
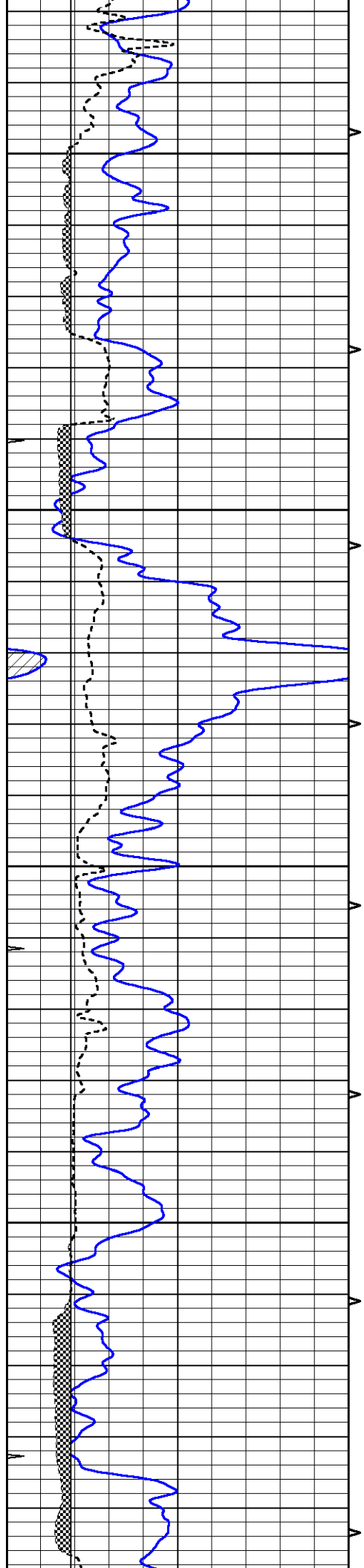


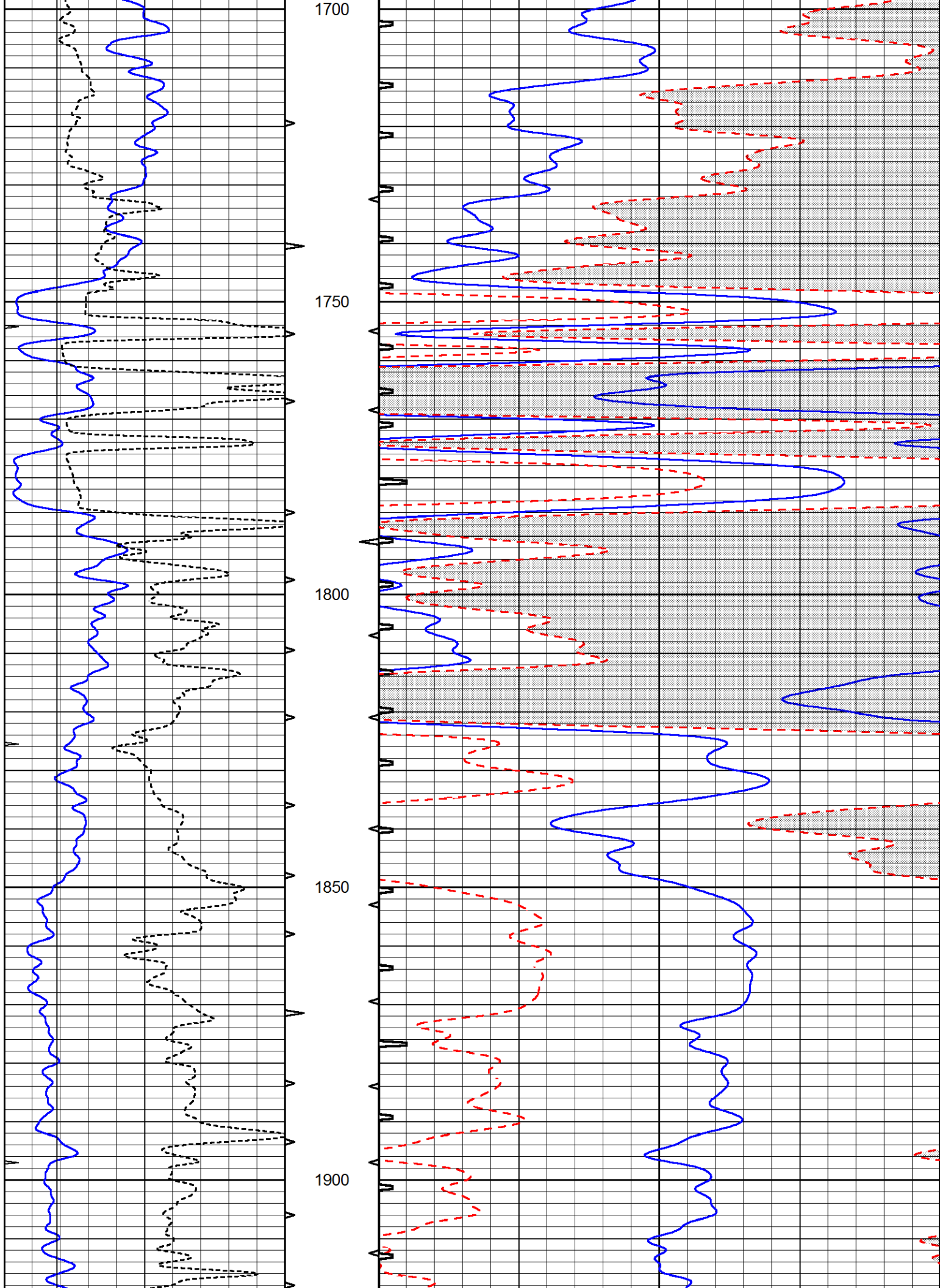


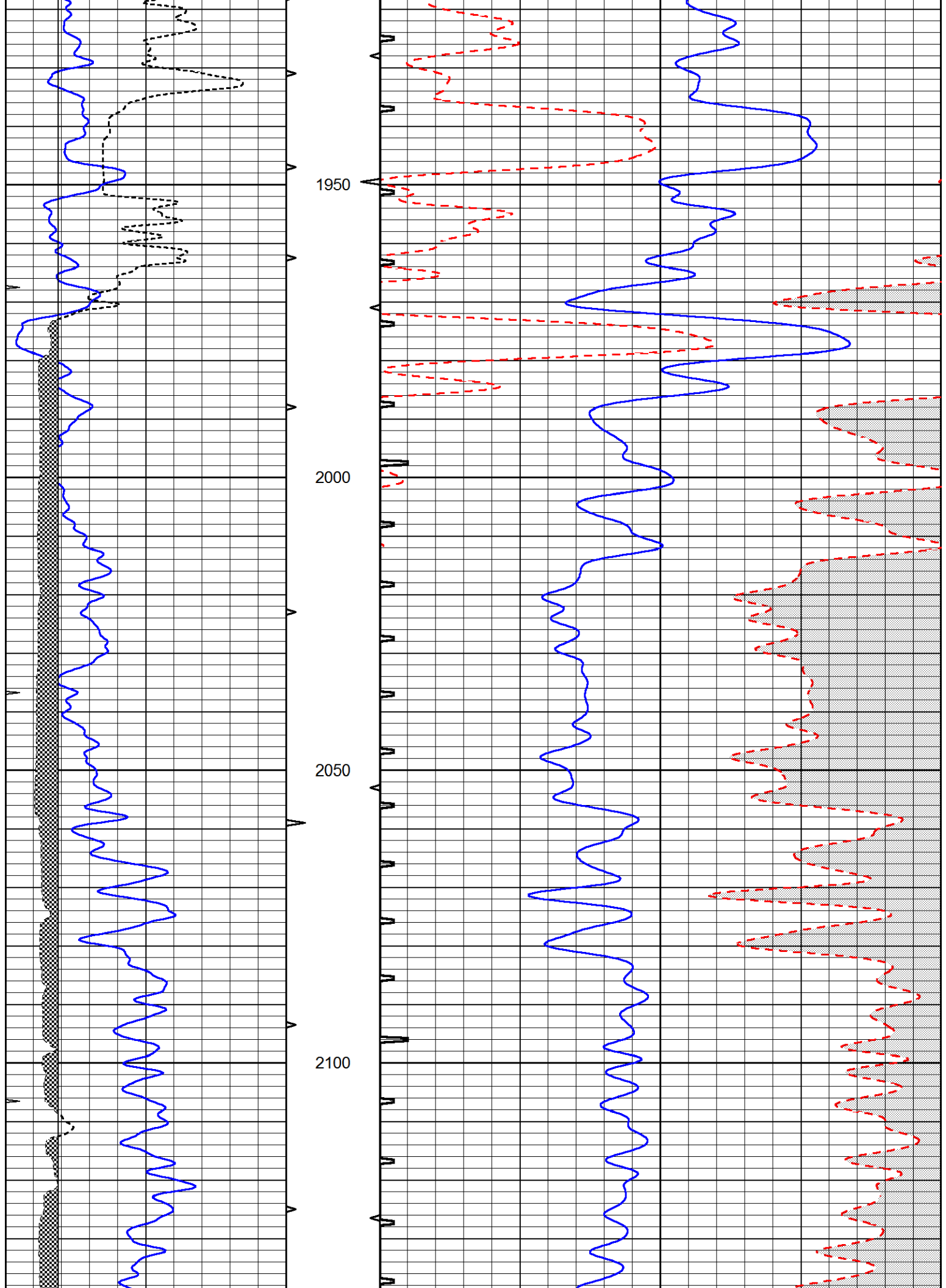


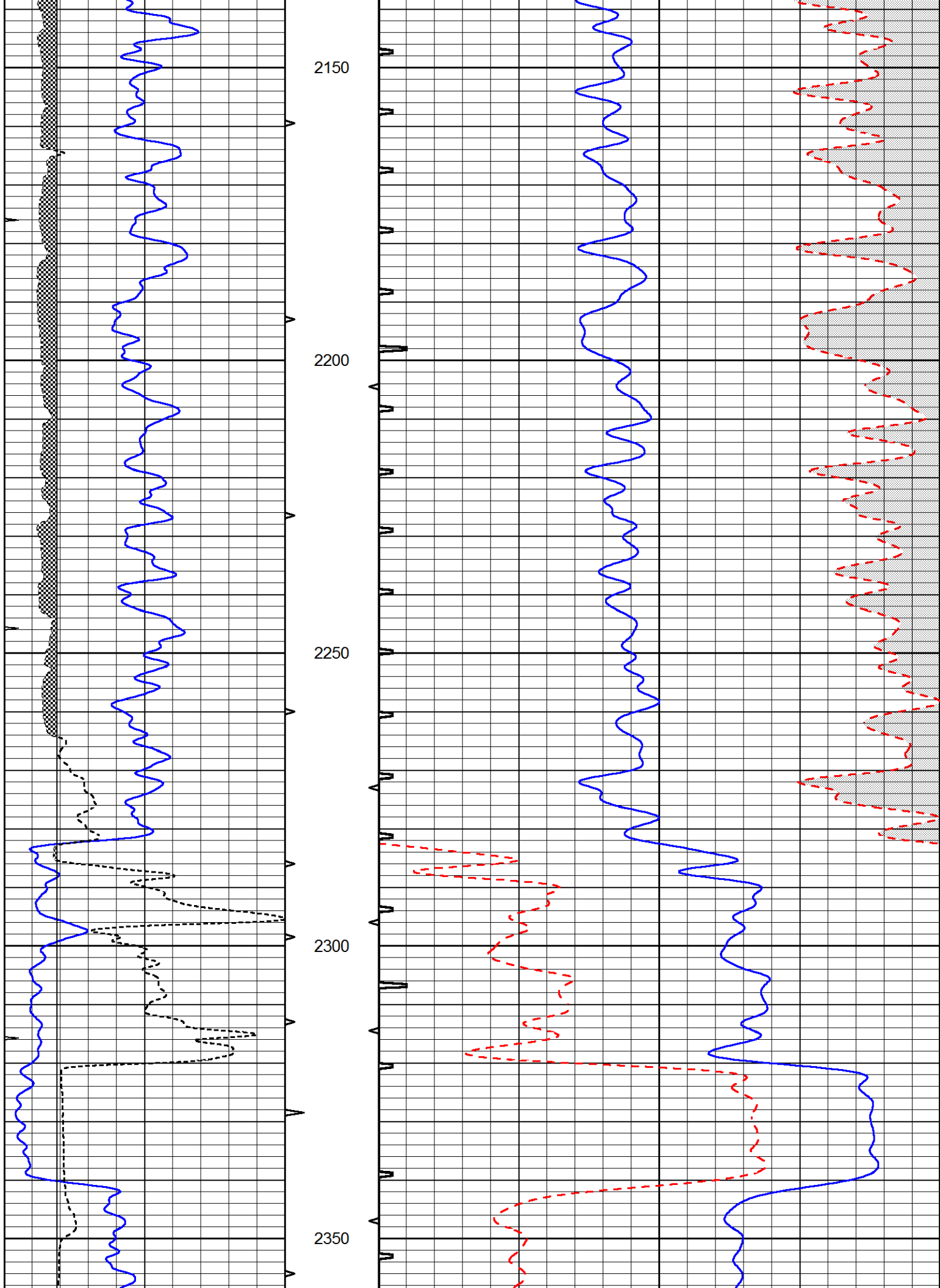


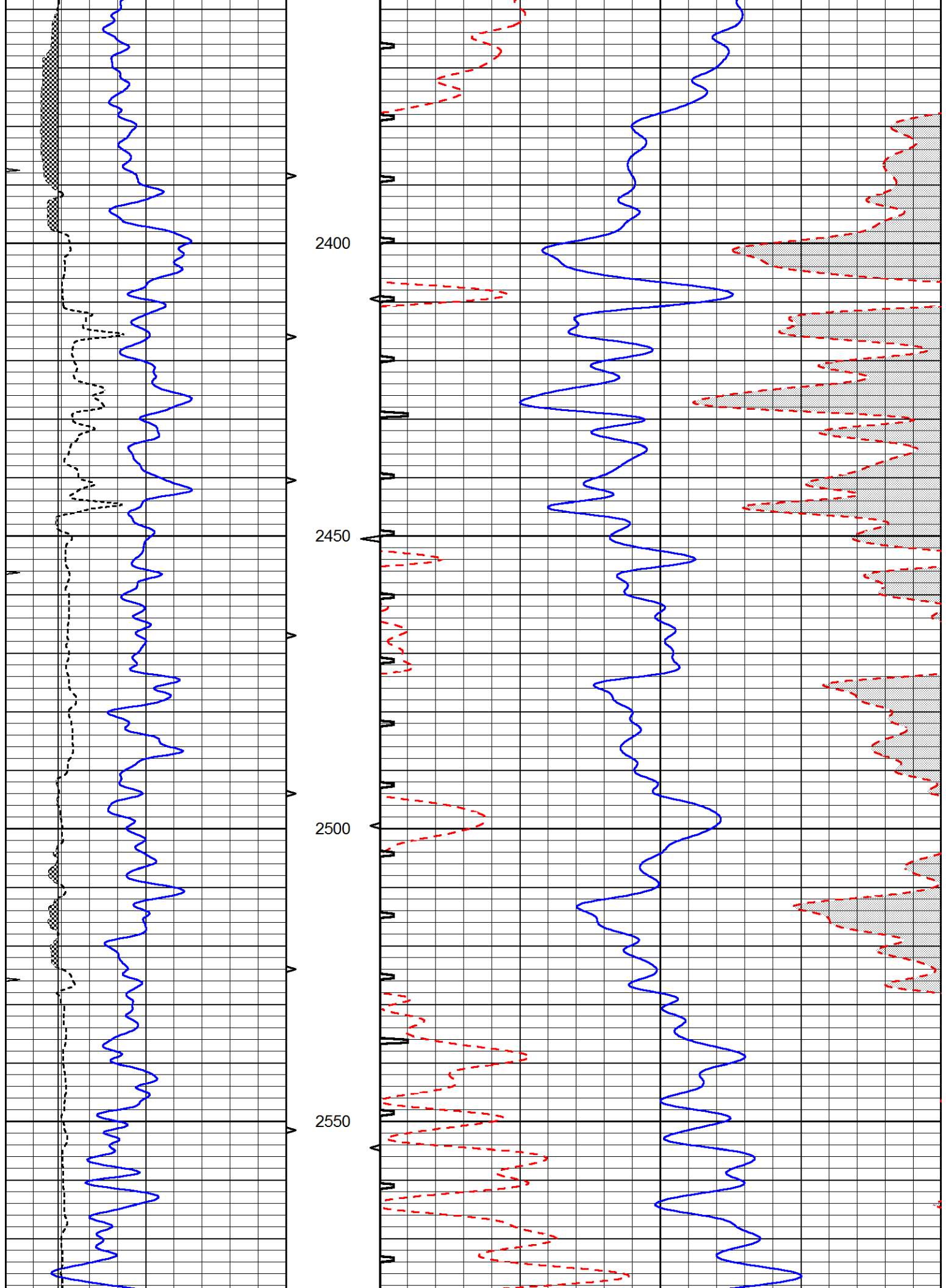


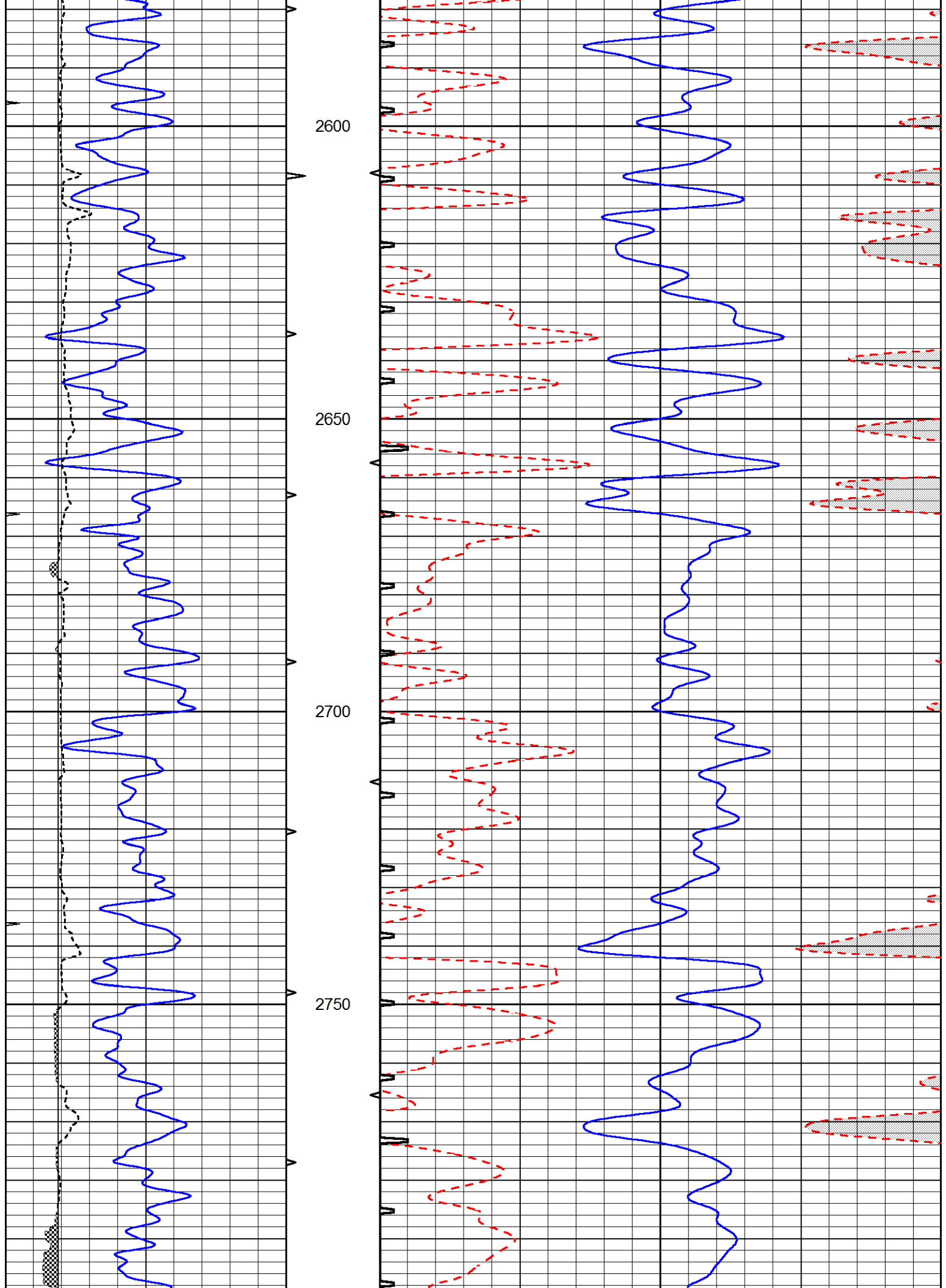


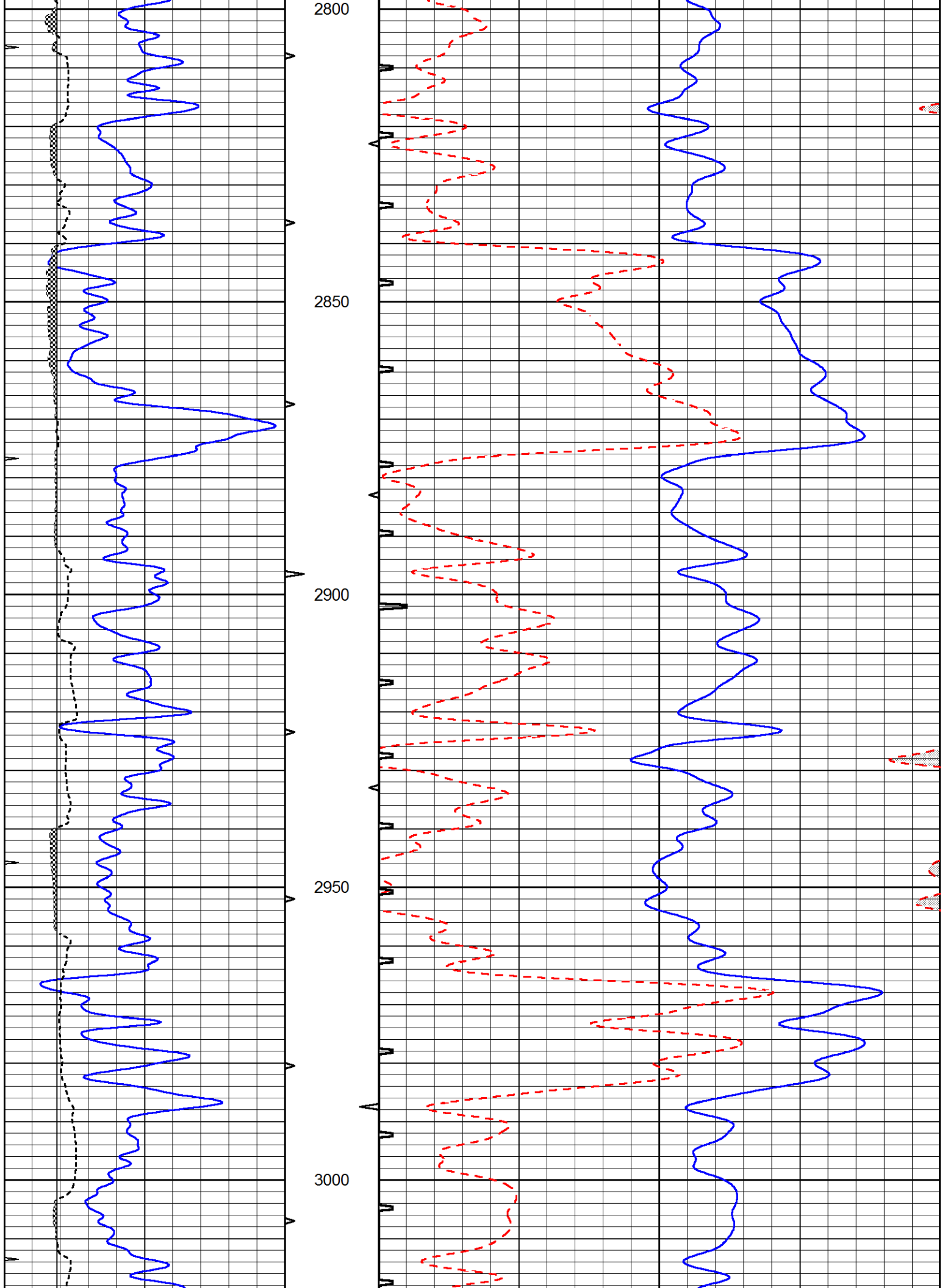


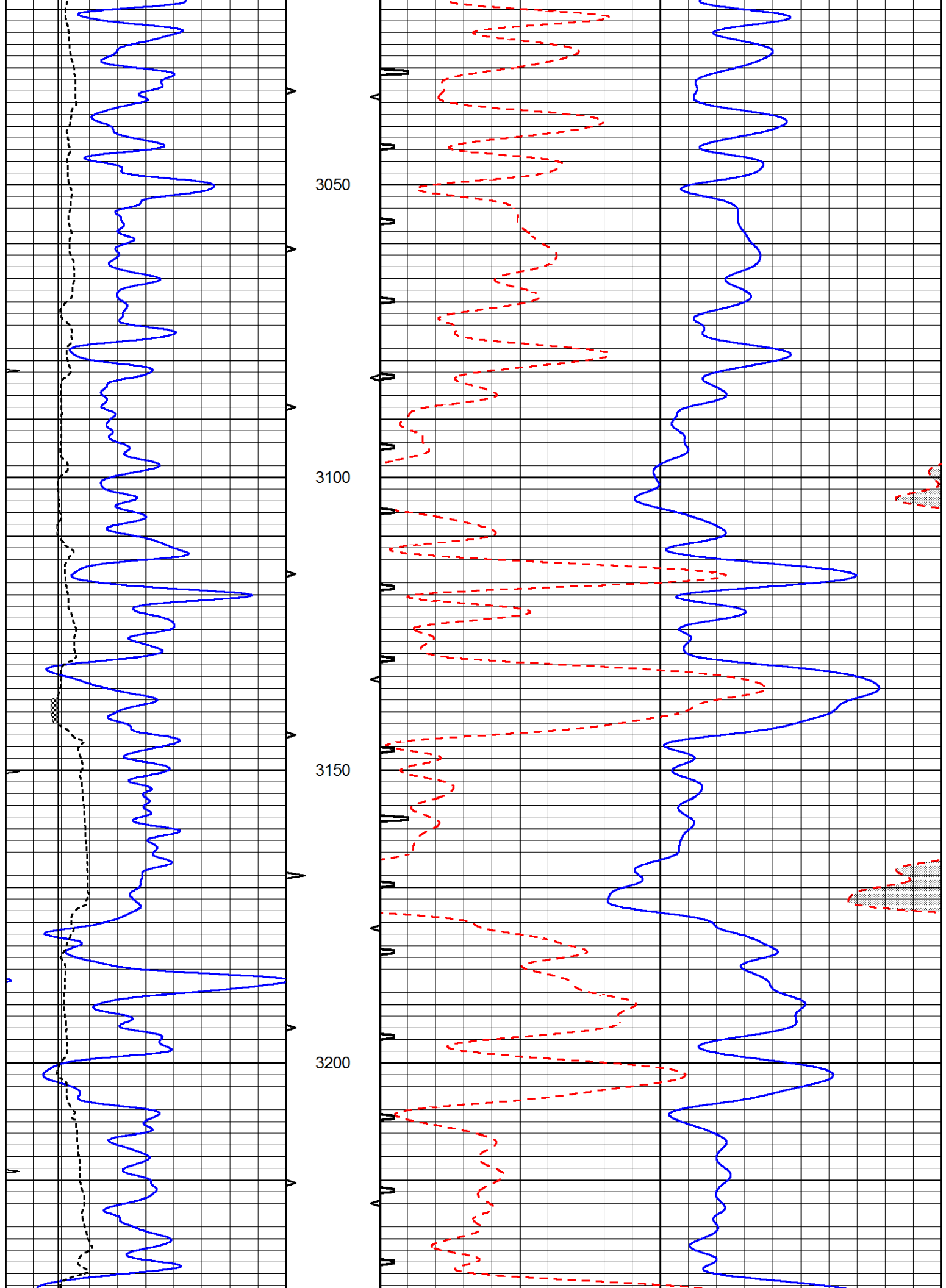


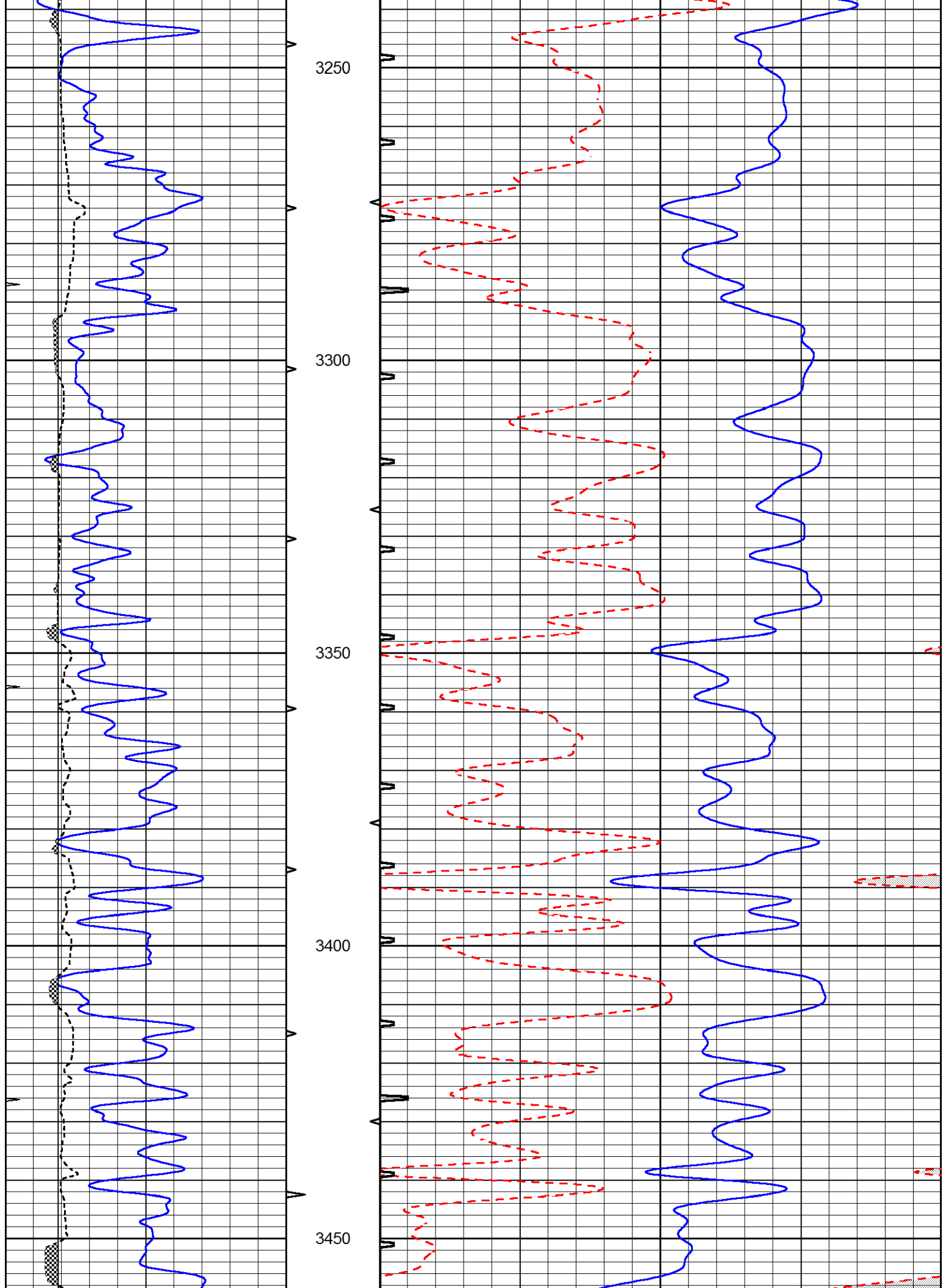


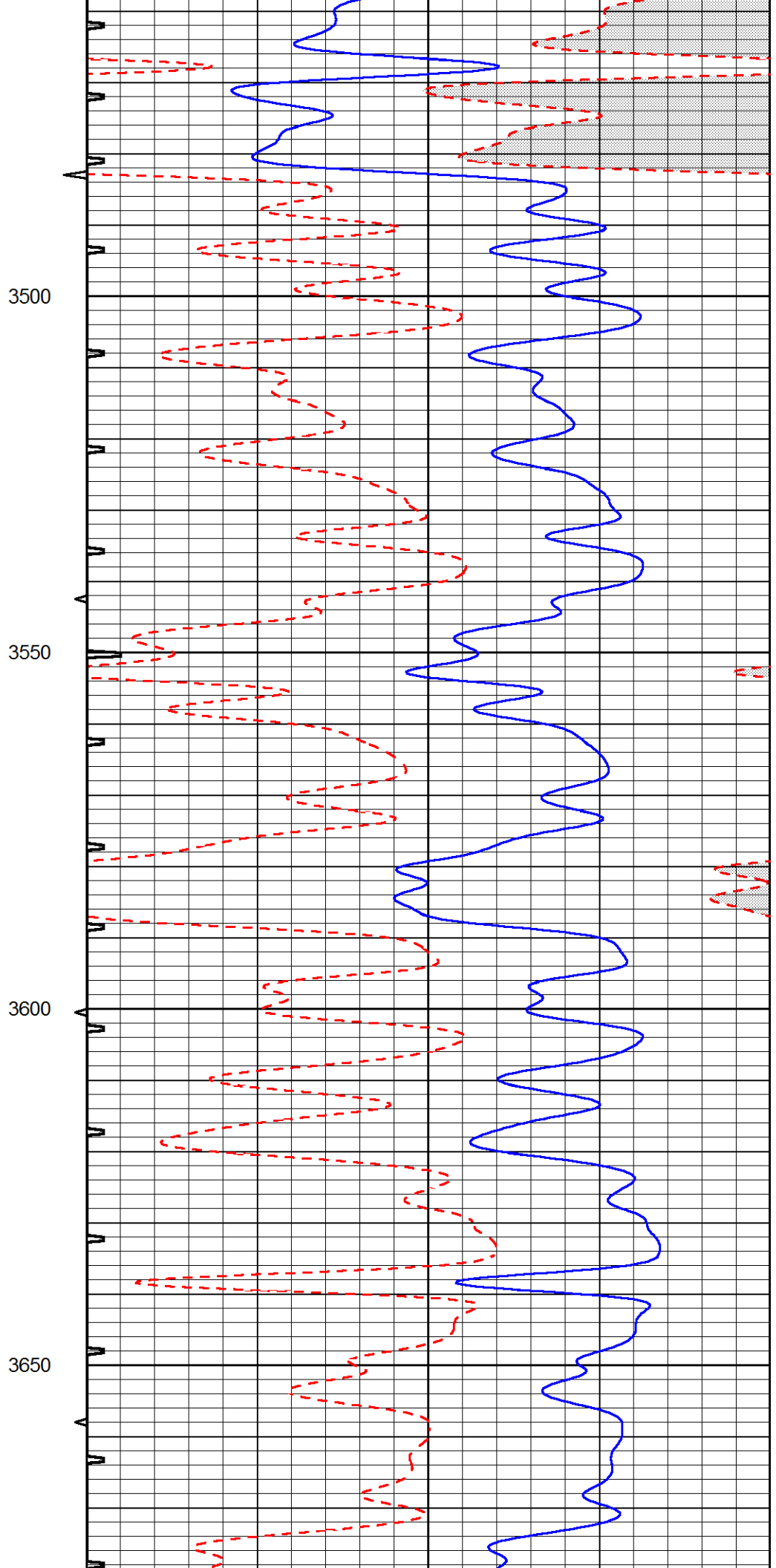
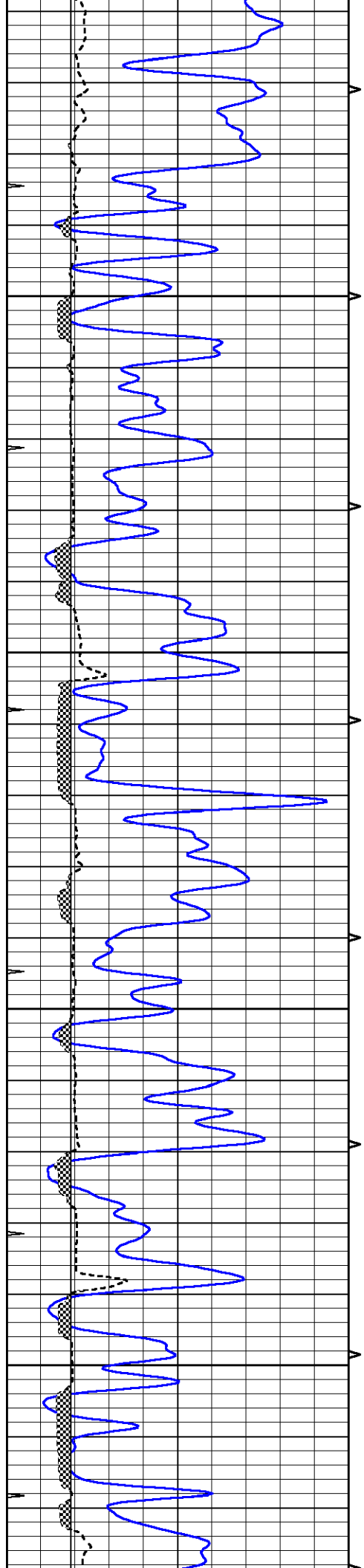


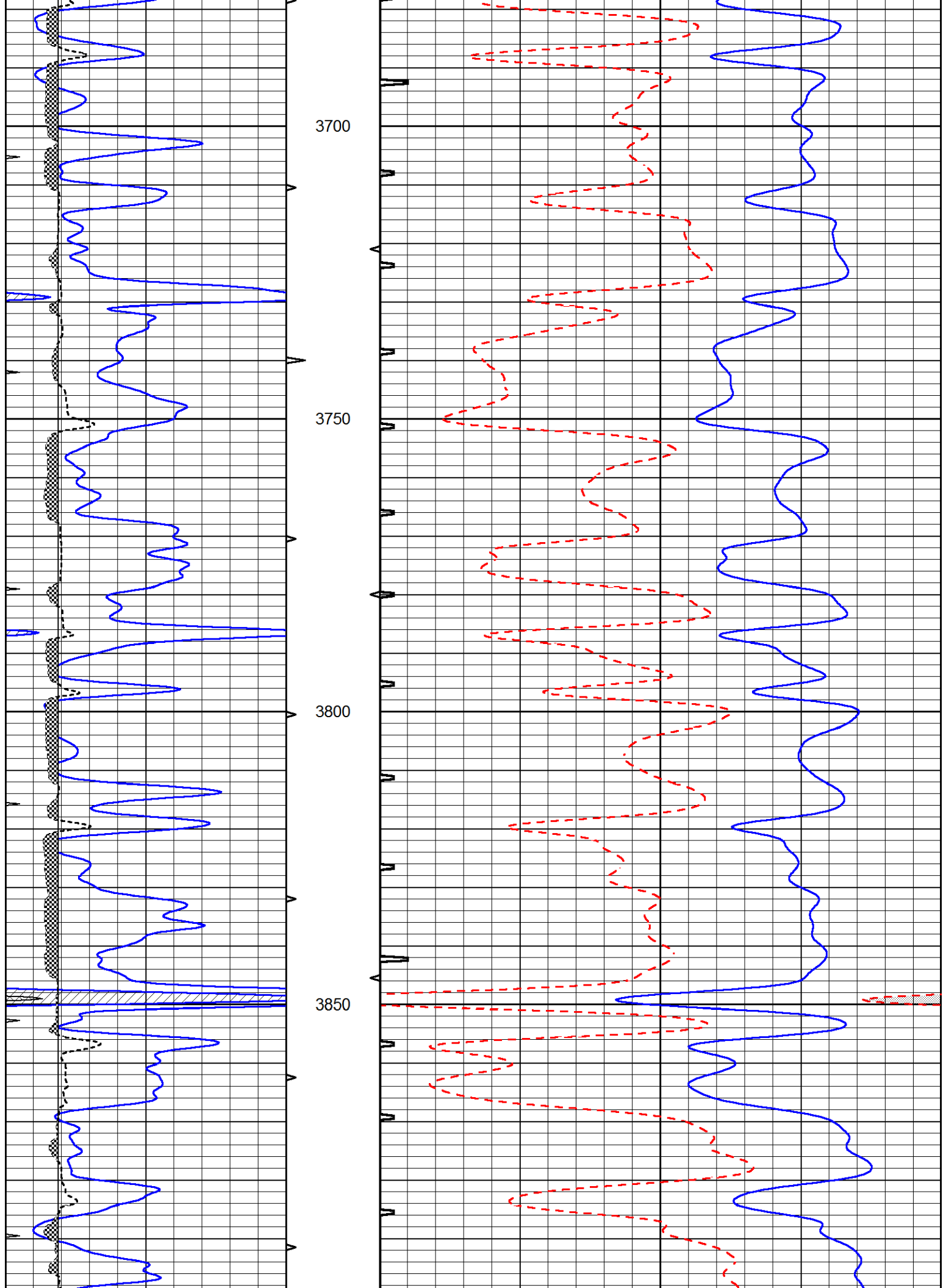


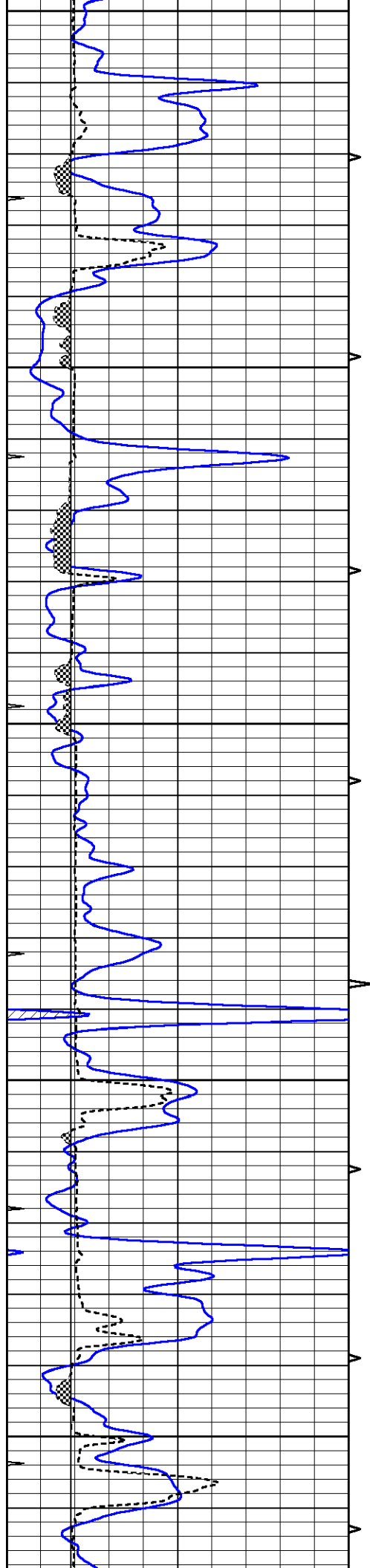




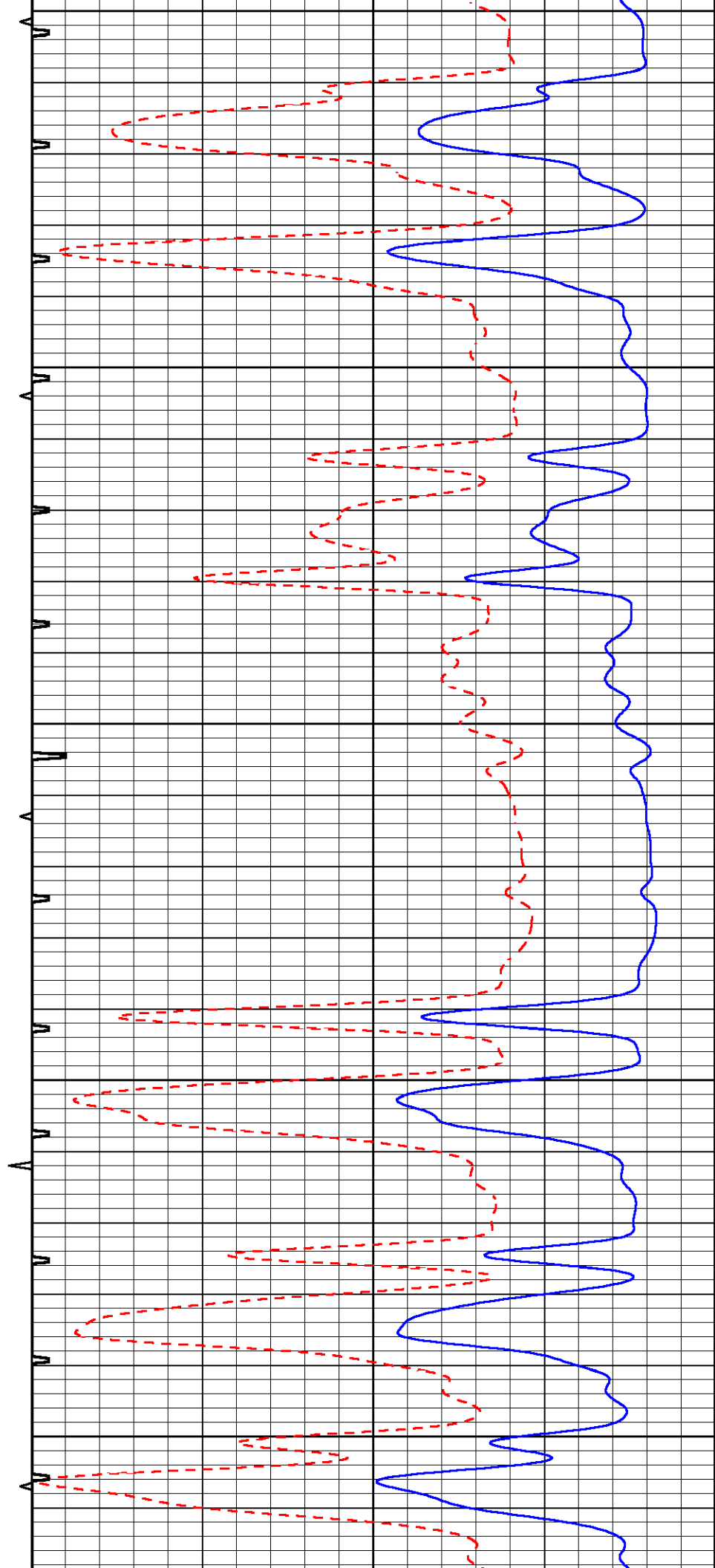


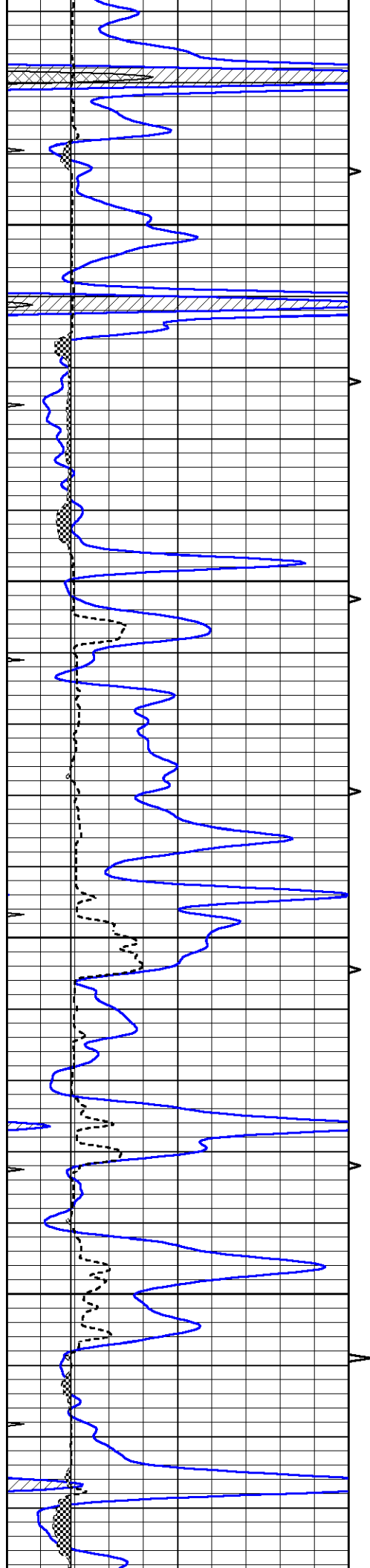






3900
3950
4000
4050
4100



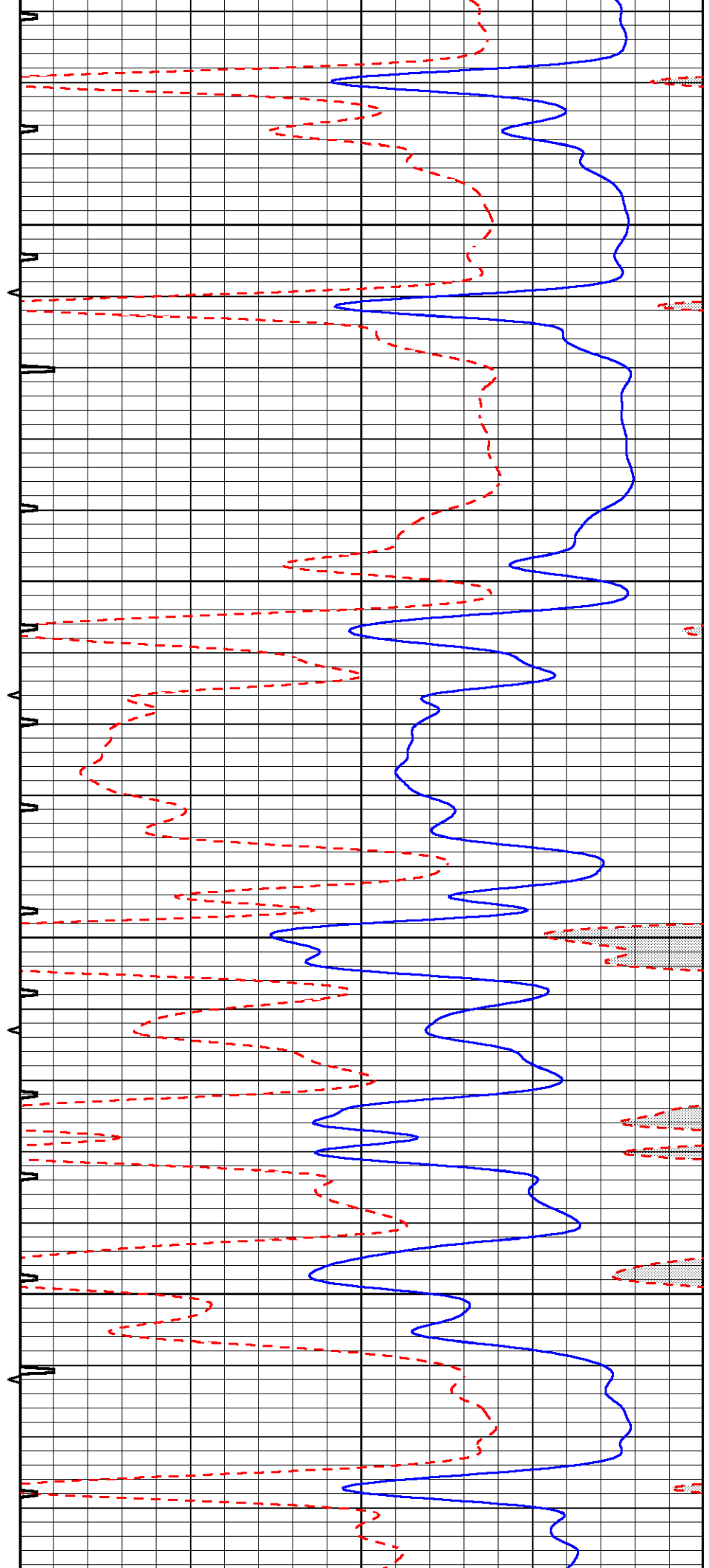


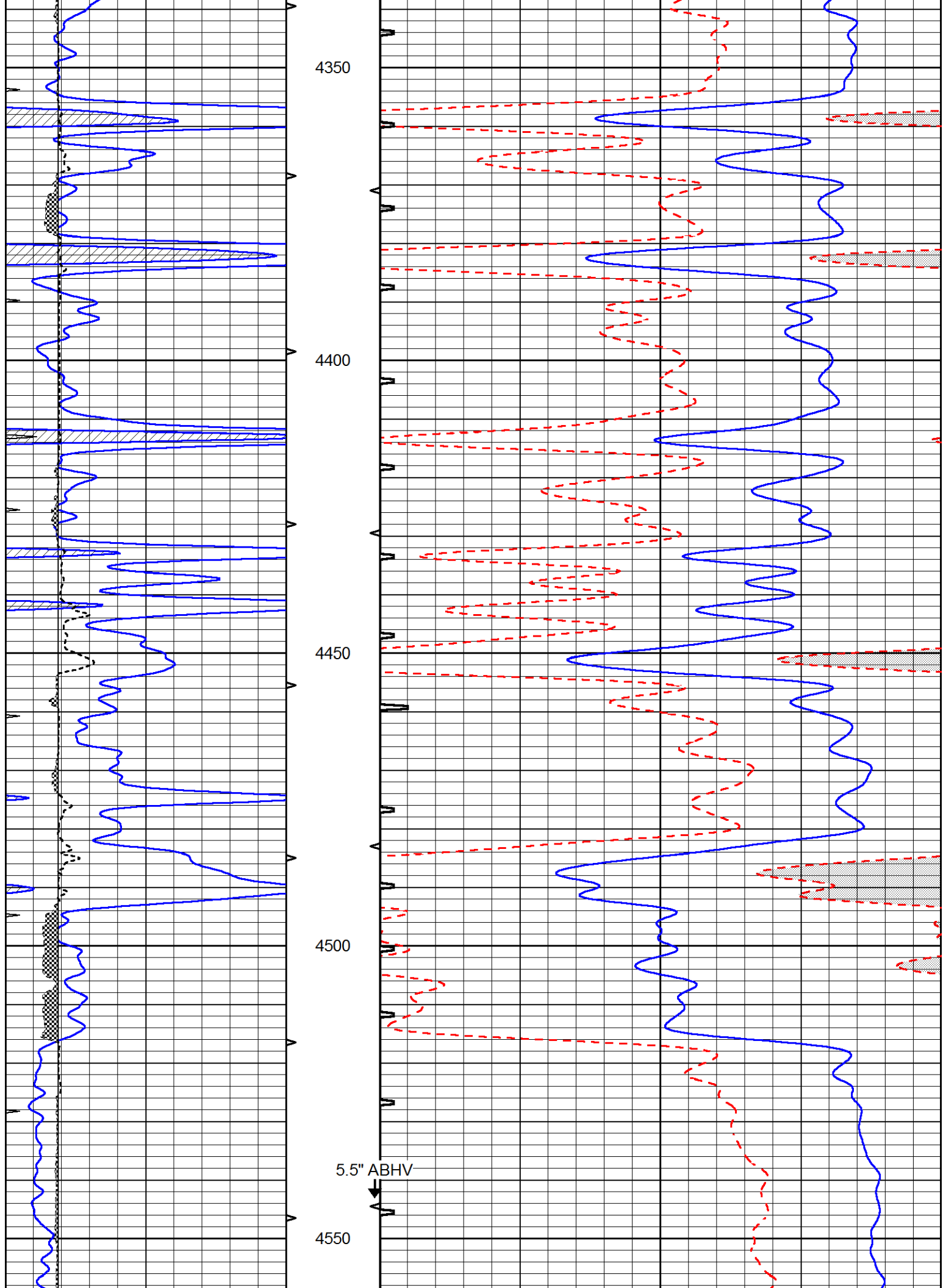
4150

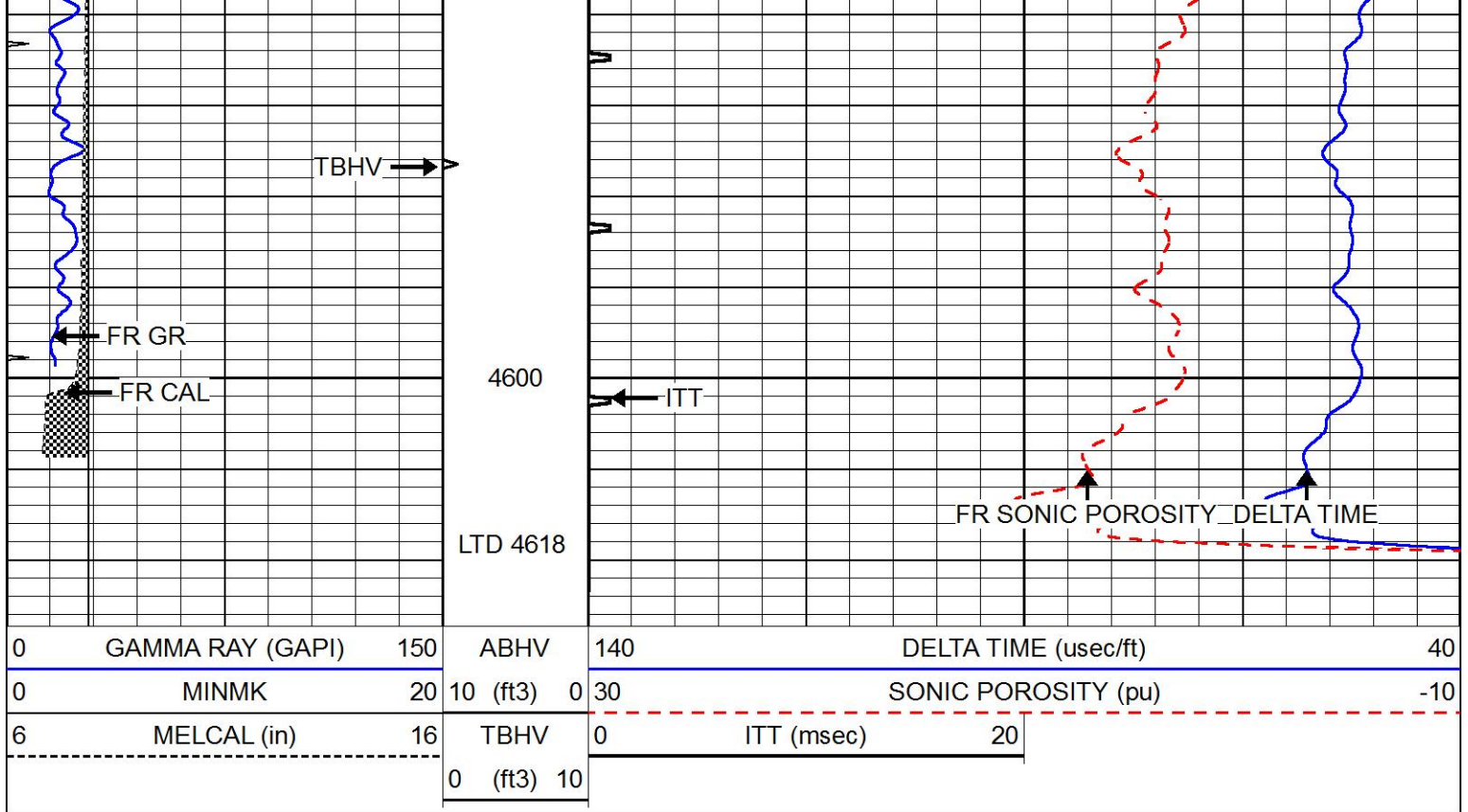
4200

4250

4300



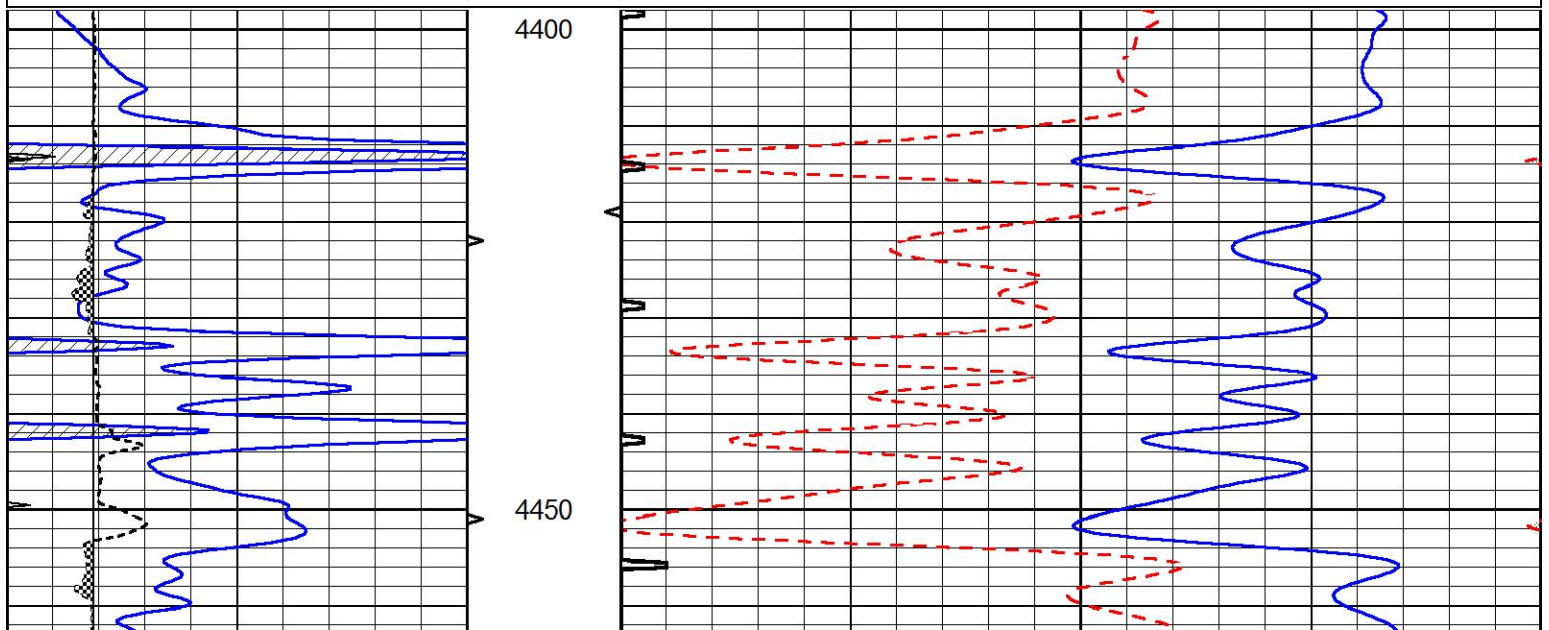


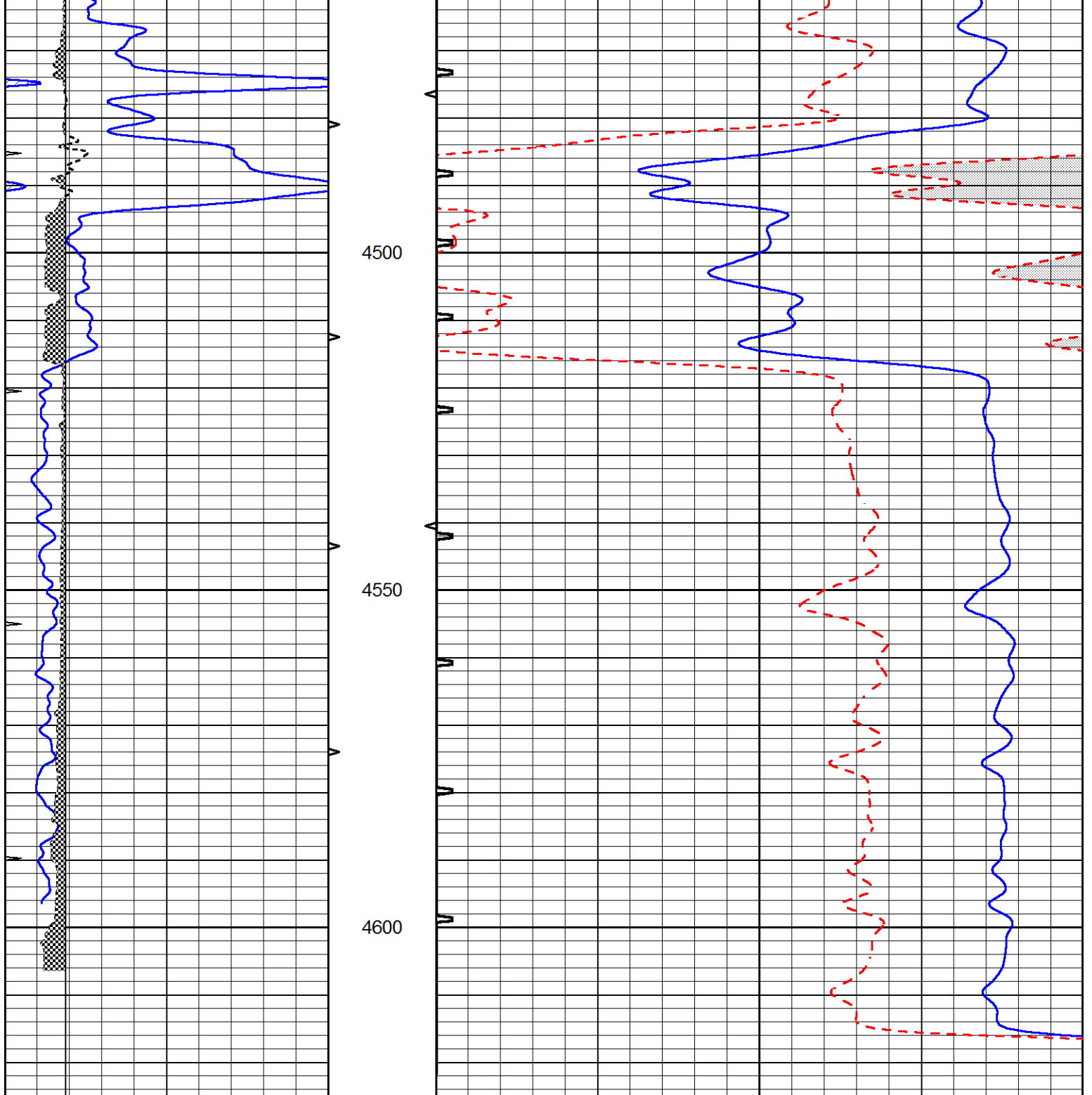


REPEAT SECTION

Database File 6707pe.db
 Dataset Pathname pass5.2
 Presentation Format _slt
 Dataset Creation Thu Jul 07 10:40:55 2022
 Charted by Depth in Feet scaled 1:240

0	GAMMA RAY (GAPI)	150	ABHV	140	DELTA TIME (usec/ft)	40
0	MINMK	20	10 (ft3) 0	30	SONIC POROSITY (pu)	-10
6	MELCAL (in)	16	TBHV	0	ITT (msec)	20
			0 (ft3) 10			





0	GAMMA RAY (GAPI)	150	ABHV	140	DELTA TIME (u-sec/ft)	40
0	MINMK	20	10 (ft3)	0 30	SONIC POROSITY (pu)	-10
6	MELCAL (in)	16	TBHV	0	ITT (msec)	20
			0 (ft3)	10		