

MICRO LOG



Company DARRAH OIL COMPANY, LLC.
 Well OTTLEY #3-12
 Field CHALK BUTTES
 County LOGAN State KANSAS

Location: API #: 15-109-21634-0000
 335' FSL & 1815' FWL
 NE - SW - SE - SW
 SEC 12 TWP 14S RGE 32W
 Permanent Datum GROUND LEVEL Elevation 2849
 Log Measured From KELLY BUSHING 9' A.G.L.
 Drilling Measured From KELLY BUSHING
 Other Services CDL/CNL/PE DIL/SONIC
 Elevation K.B. 2858 D.F. 2856 G.L. 2849

Date	7/7/22		
Run Number	TWO		
Depth Driller	4625		
Depth Logger	4618		
Bottom Logged Interval	4602		
Top Log Interval	3400		
Casing Driller	8 5/8"@217'		
Casing Logger	217		
Bit Size	7 7/8"		
Type Fluid in Hole	CHEMICAL MUD	CHLORIDES: 3.500 PPM	
Density / Viscosity	9.5/59		
pH / Fluid Loss	9.5/9.6		
Source of Sample	FLOWLINE		
Rm @ Meas. Temp	1.00@82F		
Rmf @ Meas. Temp	.750@82F		
Rmc @ Meas. Temp	1.20@82F		
Source of Rmf / Rmc	MEASURED		
Rm @ BHT	.672@122F		
Time Circulation Stopped	4 HOURS		
Time Logger on Bottom	10:15 A.M.		
Maximum Recorded Temperature	122F		
Equipment Number	8916		
Location	HAYS, KANSAS		
Recorded By	JEFF LUEBBERS		
Witnessed By	MACKLIN ARMSTRONG		

<<< Fold Here >>>

All interpretations are opinions based on inferences from electrical or other measurements and we cannot and do not guarantee the accuracy or correctness of any interpretation, and we shall not, except in the case of gross or willful negligence on our part, be liable or responsible for any loss, costs, damages, or expenses incurred or sustained by anyone resulting from any interpretation made by any of our officers, agents or employees. These interpretations are also subject to our general terms and conditions set out in our current Price Schedule.

Comments

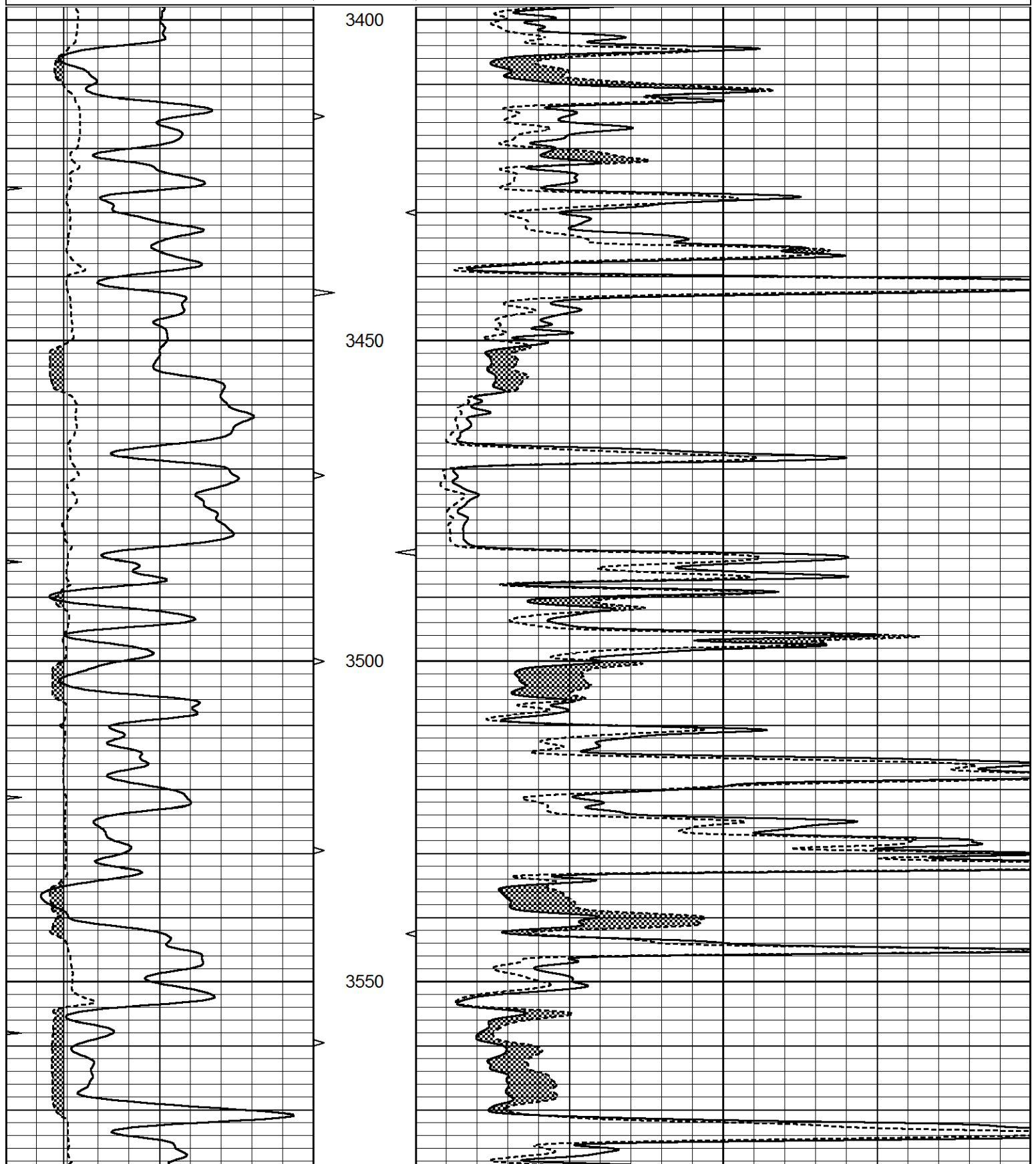
THANK YOU FOR USING ELI WIRELINE, HAYS, KS. (785) 628-6395
 DIRECTIONS:
 OAKLEY, KS., 20S. ON HWY 83 TO "JAYHAWK RD.", 1E., 1N., E. INTO

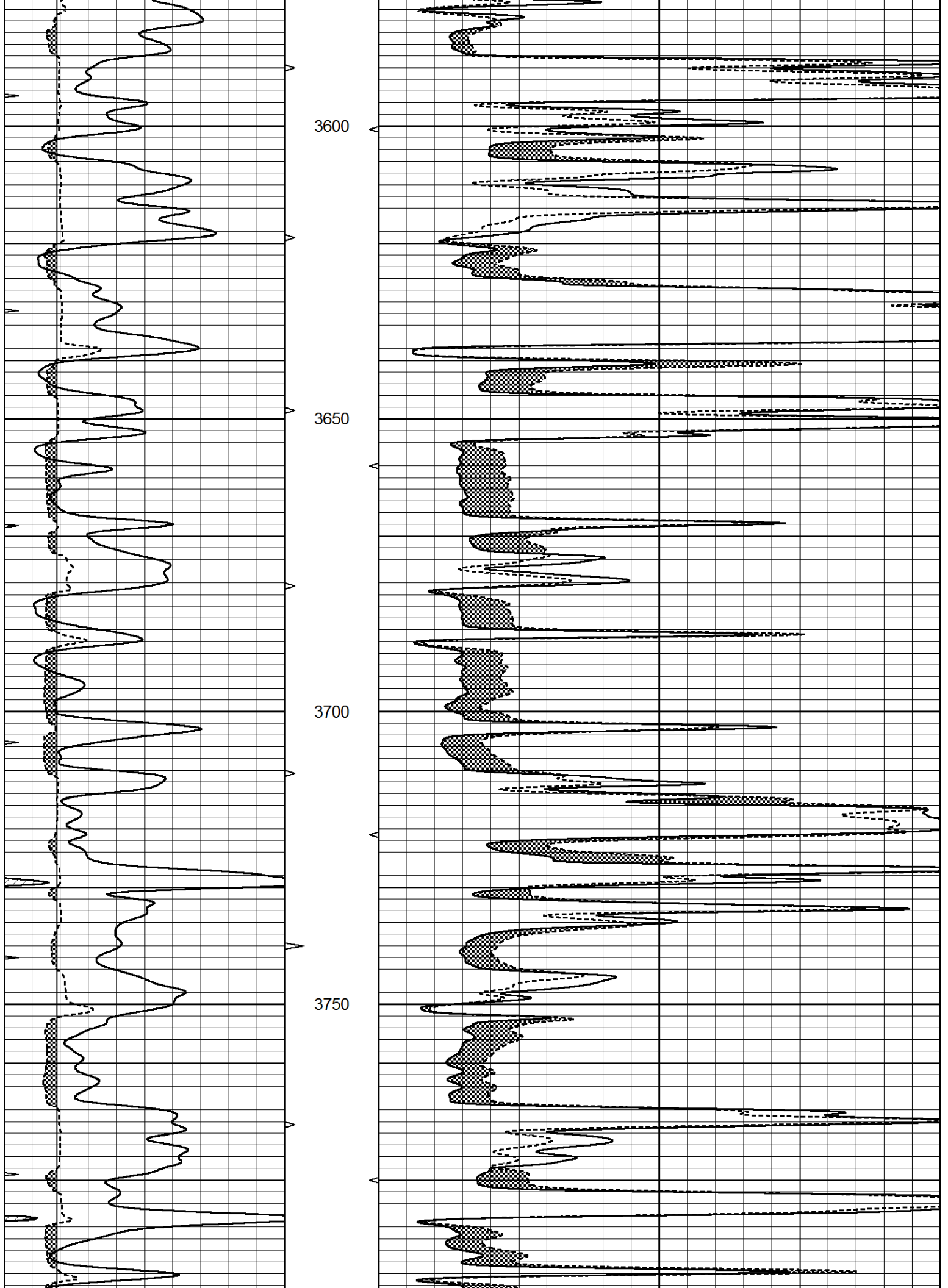


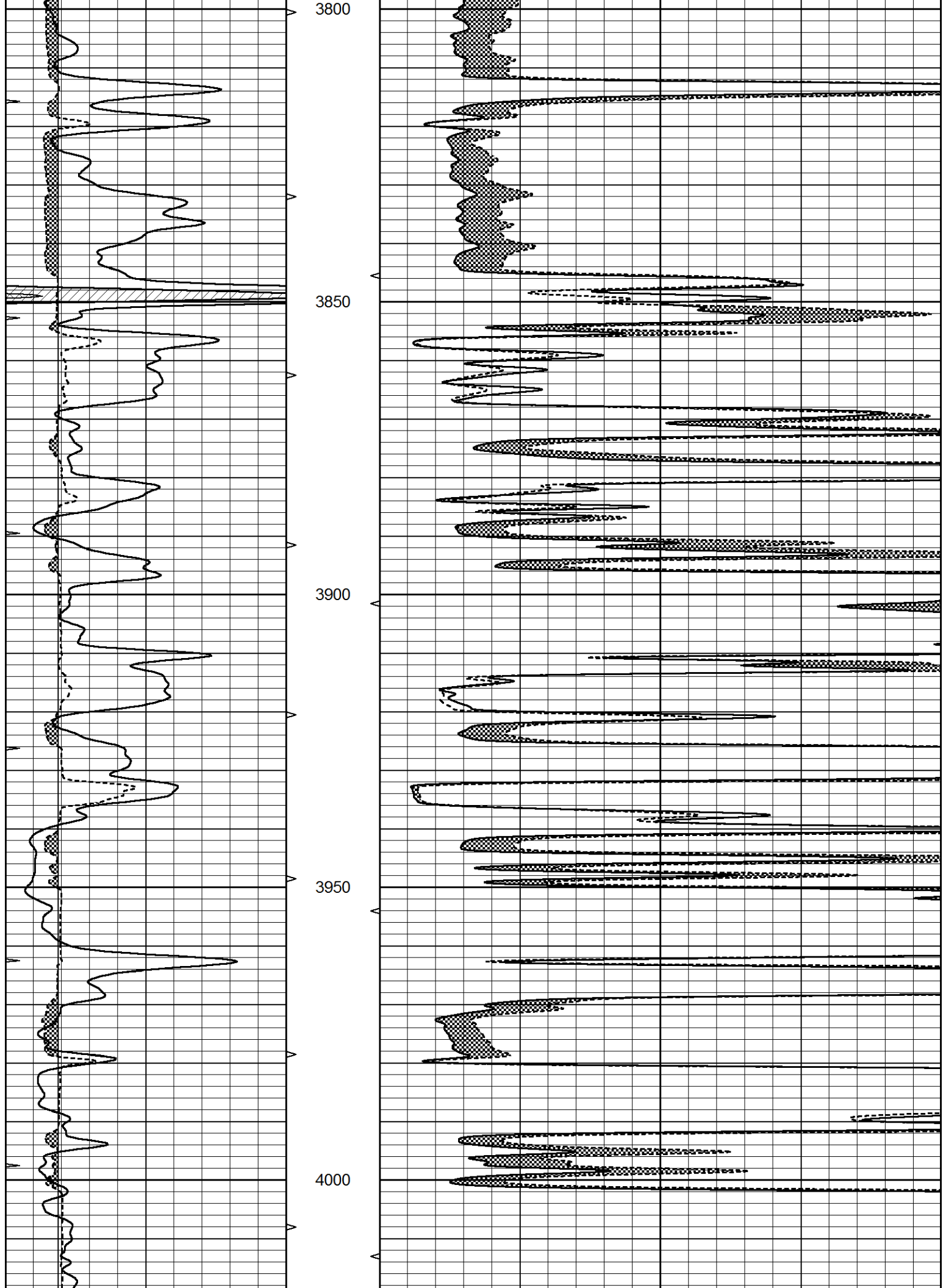
MAIN SECTION

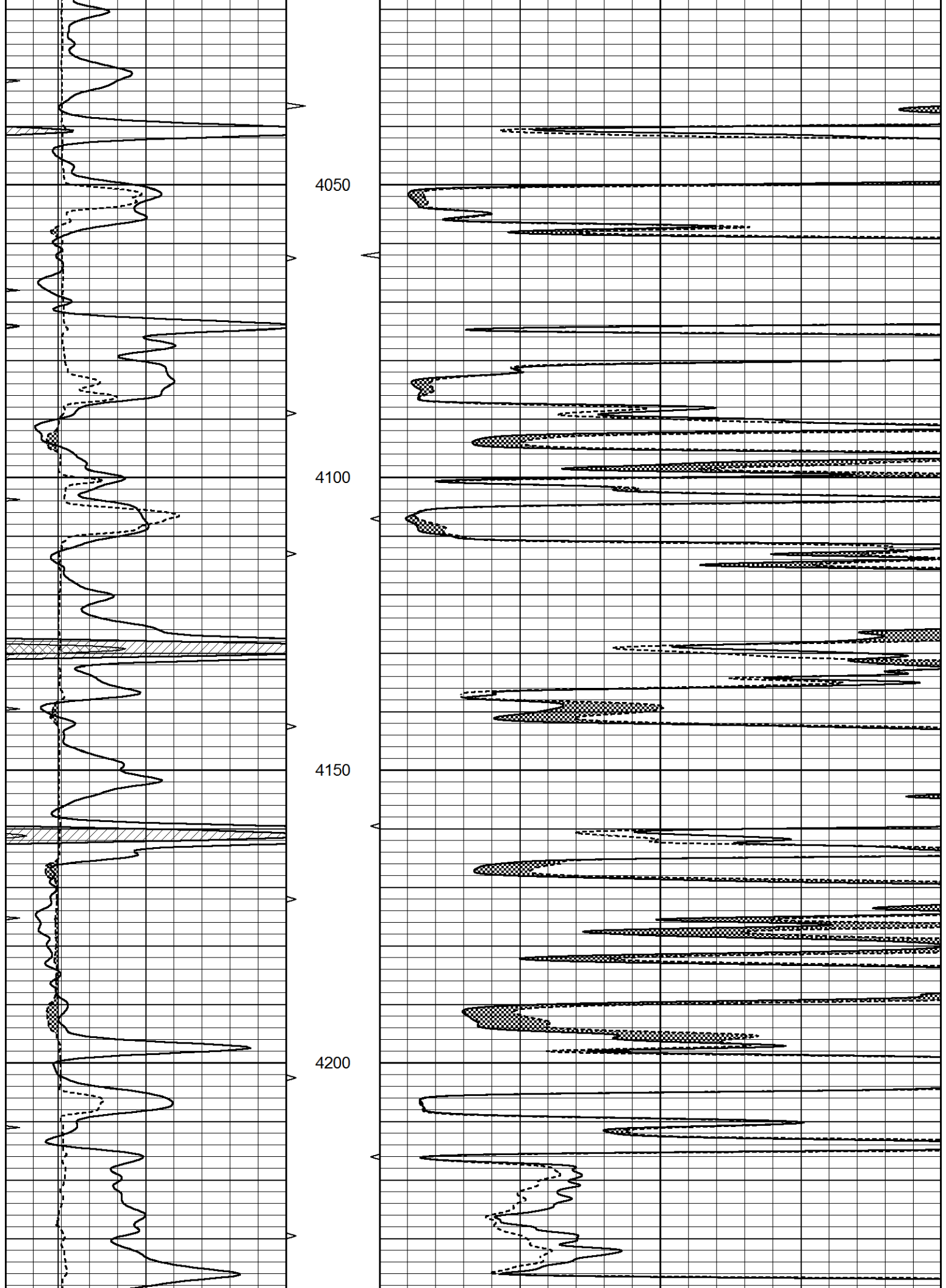
Database File 6707pe.db
 Dataset Pathname pass6.3
 Presentation Format _micro
 Dataset Creation Thu Jul 07 11:07:03 2022
 Charted by Depth in Feet scaled 1:240

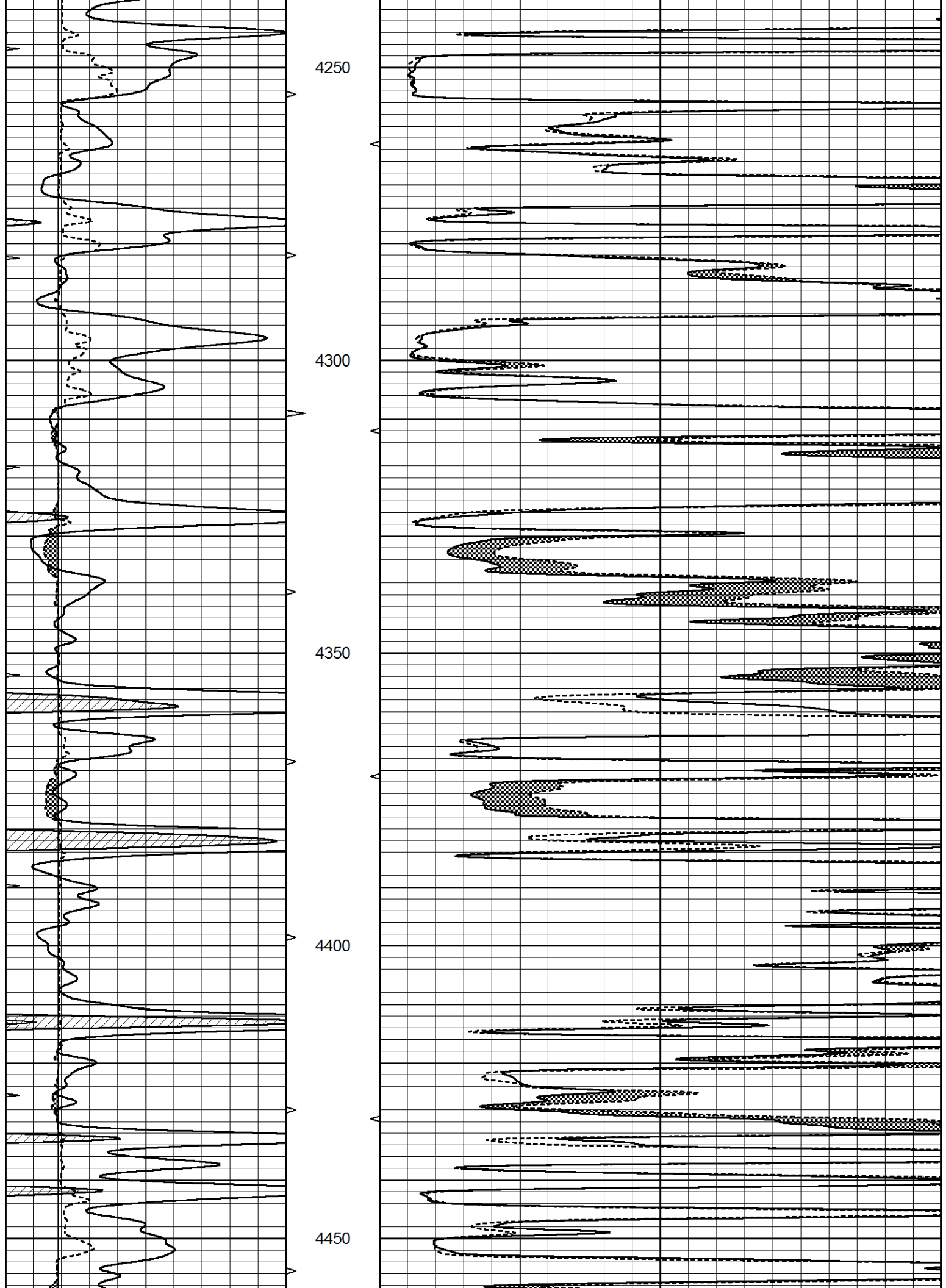
0	GAMMA RAY (GAPI)	150	ABHV	0	MEL1.5 (Ohm-m)	40
6	CALIPER (in)	16	10 (ft3)	0	MEL2.0 (Ohm-m)	40
0	MINMK	20	TBHV			
			0 (ft3)	10		

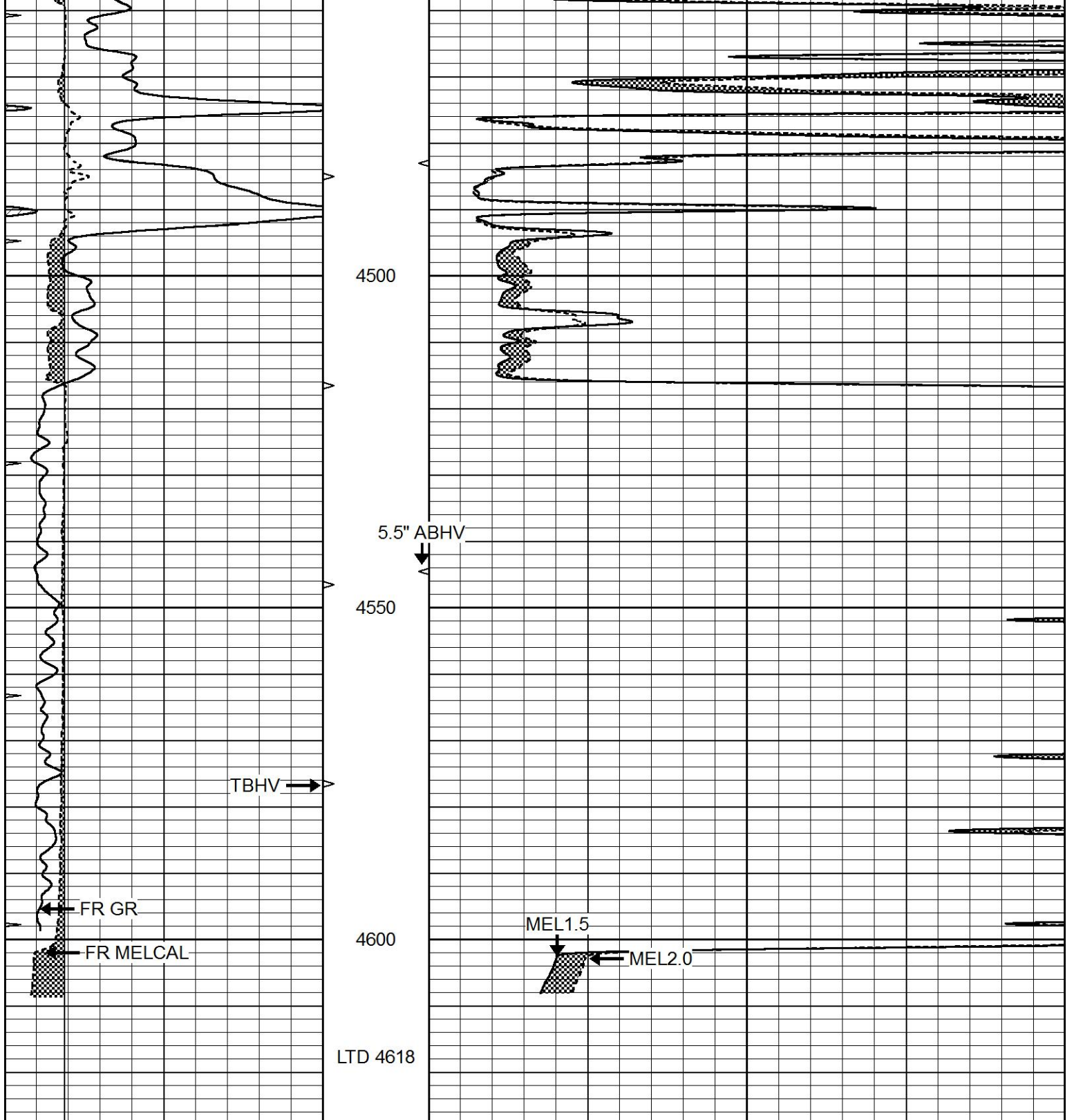












0	GAMMA RAY (GAPI)	150	ABHV	0	MEL1.5 (Ohm-m)	40
6	CALIPER (in)	16	10 (ft3)	0	MEL2.0 (Ohm-m)	40
0	MINMK	20	TBHV			
			0 (ft3)	10		



REPEAT SECTION

0	GAMMA RAY (GAPI)	150	ABHV	0	MEL1.5 (Ohm-m)	40
6	CALIPER (in)	16	10 (ft3)	0 0	MEL2.0 (Ohm-m)	40
0	MINMK	20	TBHV			
			0 (ft3)	10		

